

CANCELLED

December 15, 2023



KENTUCKY PUBLIC SERVICE COMMISSION

Your Touchstone Energy® Cooperative
(Name of Utility)

For All Territory Served By
Cooperative's Transmission System
P.S.C. KY. No. 27

Original SHEET NO. 42

CANCELLING P.S.C. KY. No. 26

Original SHEET NO. 40

RATES, TERMS AND CONDITIONS – SECTION 1

STANDARD RATE – QFS – Cogeneration/Small Power Production Sales Tariff – Over 100 KW

Availability:

Available to any Member Cooperative for service to any member of the Member Cooperative with cogeneration and/or small power production facility (i) that has net output of less than 5,000 kW and (ii) which meets the criteria for Qualifying Facility of 807 KAR 5:054 Section 4. Charges for the services under this tariff to any Member Cooperative for service to any member of the Member Cooperative with a cogeneration and/or small power production facility shall be established by contract.

Applicability:

Applicable to purchases made by a Member Cooperative for service to any QF Member of a Member Cooperative with a total capacity requirement of 100 kW or more with on-site generation of 100 kW or more operating in excess of 200 hours per year, electrically engineered so that it can meet part or all of its load with its own generation, for service not covered by one of Big Rivers' other rates. The QF Member shall have the option to provide all or part of its load with its own generation in which case that portion of the QF Member's load requirements not met by the QF shall be provided to the Member Cooperative under this tariff and all requirements for back-up or maintenance service for the QF Member shall be provided under this tariff. Otherwise, the QF Member may sell all of the output of its QF in which case the QF Member's load requirements shall be provided to the Member Cooperative under the terms and conditions of one or more of Big Rivers' standard rates applicable to the load requirements and type of service of the QF Member.

Definitions:

Please see Section 4 for definitions common to all tariffs.

Off-System Sales Transaction – “Off-System Transaction” means sales of electric energy by Big Rivers other than to the Member Cooperatives and Henderson Municipal Power and Light.

QF Member – “QF Member” means a member of a Member Cooperative with a QF.

Third-Party Suppliers – “Third-Party Suppliers” means any supplier of wholesale electric service to Big Rivers other than SEPA and Henderson Municipal Power and Light.

DATE OF ISSUE May 15, 2014
DATE EFFECTIVE February 1, 2014
/s/ Billie J. Richert

ISSUED BY: Billie J. Richert,
Vice President Accounting, Rates, and
Chief Financial Officer
Big Rivers Electric Corporation, 201 Third Street, Henderson, KY 42420
Issued by Authority of an Order of the Commission,
dated April 25, 2014, in Case No. 2013-00199

KENTUCKY PUBLIC SERVICE COMMISSION

JEFF R. DEROUEN
EXECUTIVE DIRECTOR

TARIFF BRANCH

Brent Kirtley

EFFECTIVE
2/1/2014
PURSUANT TO 807 KAR 5:011 SECTION 9 (1)

CANCELLED

December 15, 2023

**KENTUCKY PUBLIC
SERVICE COMMISSION**



Your Touchstone Energy® Cooperative

(Name of Utility)

For All Territory Served By
Cooperative's Transmission System

P.S.C. KY. No. 27

Original SHEET NO. 43

CANCELLING P.S.C. KY. No. 26

Original SHEET NO. 41

RATES, TERMS AND CONDITIONS – SECTION 1

**STANDARD RATE – QFS – Cogeneration/Small Power Production Sales Tariff – Over 100 KW –
(continued)**

Conditions of Service:

To receive service hereunder, the Member Cooperative must:

Obtain from the QF Member an executed, written contract for electric service hereunder on terms acceptable to Big Rivers. Such contract shall set forth any specific arrangements between the parties based on individual circumstances and shall:

Specify the maximum capacity to be made available to the QF Member on an unscheduled basis in any hour (Maximum Unscheduled Capacity), and

If desired by the QF Member, specify the terms and conditions for the delivery of Maintenance Service, and

If desired by the QF Member, specify the capacity of on-site generation for which interruptible unscheduled back-up and interruptible scheduled maintenance power may be provided, and

Specify any other term or condition which the Member Cooperative or Big Rivers may require for service used by a QF Member, taking into account the nature of use, the quality used, the quantity used, the time when used, the purpose for which used, and any other reasonable consideration, and

Enter into a contract with Big Rivers, or amend an existing contract with Big Rivers, to specify the terms and conditions of service between Big Rivers and the Member Cooperative regarding the power supply for the QF Member.

DATE OF ISSUE May 15, 2014
DATE EFFECTIVE February 1, 2014

/s/ Billie J. Richert

ISSUED BY: **Billie J. Richert,**
Vice President Accounting, Rates, and
Chief Financial Officer

Big Rivers Electric Corporation, 201 Third Street, Henderson, KY 42420

*Issued by Authority of an Order of the Commission,
dated April 25, 2014, in Case No. 2013-00199*

**KENTUCKY
PUBLIC SERVICE COMMISSION**

**JEFF R. DEROUEN
EXECUTIVE DIRECTOR**

TARIFF BRANCH

EFFECTIVE

2/1/2014

PURSUANT TO 807 KAR 5:011 SECTION 9 (1)



(Name of Utility)

For All Territory Served By
 Cooperative's Transmission System
 P.S.C. KY. No. 27
 Original SHEET NO. 44
 CANCELLING P.S.C. KY. No. 26
 Original SHEET NO. 42

RATES, TERMS AND CONDITIONS – SECTION 1

STANDARD RATE – QFS – Cogeneration/Small Power Production Sales Tariff – Over 100 KW – (continued)

For Each QF Member, the Member Cooperative Will be Billed Monthly for:

- Supplementary Service (capacity and energy).
- Unscheduled Back-up Service, if any (capacity charge only).
- Maintenance Service (capacity and energy), if any.
- Excess Demand, if any.
- Additional charges, if any.



Monthly Charges for Sales to a Member Cooperative for Service to a QF Member:

Supplementary Service:

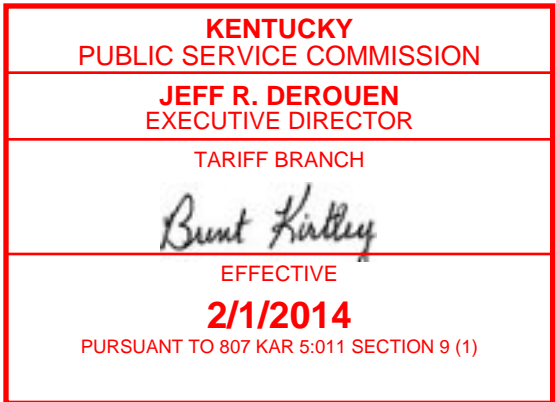
Supplementary demand shall be the QF Member's highest actual demand (adjusted for distribution losses if applicable) measured during the month, excluding Scheduled Maintenance Demand up to but not exceeding the actual measured demands in each demand interval during a Maintenance Schedule, and supplementary energy shall be the actual measured energy (adjusted for distribution losses if applicable), excluding Maintenance Energy sold to the QF by the Member Cooperative in each month. The monthly charges for supplementary demand and energy shall be according to the rates set forth in Big Rivers' Standard Rate Schedule RDS.

Unscheduled Back-up Service:

Unscheduled Back-up Demand is the QF Member's Maximum Unscheduled Capacity minus the Supplementary Billing Demand for the month. In months in which Maintenance Service has been Scheduled, appropriate credit for Scheduled Maintenance Demand shall be applied to the Unscheduled Back-up Demand such that the Member Cooperative will not be charged for Unscheduled Back-up Demand in addition to Scheduled Maintenance Demand when Scheduled

DATE OF ISSUE May 15, 2014
 DATE EFFECTIVE February 1, 2014
 /s/ Billie J. Richert

ISSUED BY: Billie J. Richert,
 Vice President Accounting, Rates, and
 Chief Financial Officer
 Big Rivers Electric Corporation, 201 Third Street, Henderson, KY 42420
*Issued by Authority of an Order of the Commission,
 dated April 25, 2014, in Case No. 2013-00199*



CANCELLED

December 15, 2023

**KENTUCKY PUBLIC
SERVICE COMMISSION**



Your Touchstone Energy® Cooperative
(Name of Utility)

For All Territory Served By
Cooperative's Transmission System
P.S.C. KY. No. 27

Original SHEET NO. 45

CANCELLING P.S.C. KY. No. 26

Original SHEET NO. 43

RATES, TERMS AND CONDITIONS – SECTION 1

**STANDARD RATE – QFS – Cogeneration/Small Power Production Sales Tariff – Over 100 KW –
(continued)**

Maintenance Service is being provided. The monthly charges to a Member Cooperative for
Unscheduled Back-up Demand shall be:

One hundred-ten percent (110%) of Big Rivers' actual cost, including transmission service, to
import energy from a Third Party supplier to supply the Unscheduled Back-up Service for the
QF Members:

Maximum Unscheduled Capacity shall initially be the amount as specified by the QF Member per
contract with the Member Cooperative, but in no case less than the actual demand delivered in any
month, including the current month. Big Rivers will accept a reduction in the Maximum
Unscheduled Capacity upon twelve (12) months advance notice from the Member Cooperative.
Said notice must specify the reduction in kW's and the basis for the lower requirements. All energy
shall be billed as either supplementary energy or maintenance energy.

Maintenance Service:

Maintenance Service shall be available to a Member Cooperative to back-up a QF Member's QF only if
the Member Cooperative has scheduled delivery of the maintenance services in advance with Big
Rivers. The Member Cooperative may schedule up to four weeks of seven consecutive days each per
year of such service for a QF Member, subject to scheduling of such usage by Big Rivers. The Member
Cooperative may reschedule at any time by giving a forty-eight (48) hour notice to Big Rivers.
Scheduled Maintenance Demand may not exceed the design capacity of the QF Member's QF.
Maintenance Service will be available on an on-peak or off-peak basis. The selection of on-peak
Maintenance Service entitles the Member Cooperative to schedule the service for the QF Member at any
time. The selection of off-peak Maintenance Service entitles the Member Cooperative to schedule the
service for the QF Member only during those hours not designated as on-peak. The designated on-peak
hours are as follows:

Summer on-peak usage is defined as power requirements occurring between the hours beginning
6:00 AM CPT and ending 10:00 PM CPT on any weekday from May 1 through September 30.

DATE OF ISSUE May 15, 2014
DATE EFFECTIVE February 1, 2014

/s/ Billie J. Richert

ISSUED BY: Billie J. Richert,
Vice President Accounting, Rates, and
Chief Financial Officer
Big Rivers Electric Corporation, 201 Third Street, Henderson, KY 42420
*Issued by Authority of an Order of the Commission,
dated April 25, 2014, in Case No. 2013-00199*

**KENTUCKY
PUBLIC SERVICE COMMISSION**

**JEFF R. DEROUEN
EXECUTIVE DIRECTOR**

TARIFF BRANCH

Brent Kirtley

EFFECTIVE
2/1/2014
PURSUANT TO 807 KAR 5:011 SECTION 9 (1)

CANCELLED

December 15, 2023



KENTUCKY PUBLIC SERVICE COMMISSION

Your Touchstone Energy® Cooperative
(Name of Utility)

For All Territory Served By
Cooperative's Transmission System
P.S.C. KY. No. 27

Original SHEET NO. 46

CANCELLING P.S.C. KY. No. 26

Original SHEET NO. 44

RATES, TERMS AND CONDITIONS – SECTION 1

STANDARD RATE – QFS – Cogeneration/Small Power Production Sales Tariff – Over 100 KW – (continued)

Winter on-peak usage is defined as power requirements occurring between the hours beginning 6:00 AM CPT and ending 10:00 PM CPT on any weekday from December 1 through March 31.

Off-peak usage is defined as all power requirements not included in “Summer on-peak usage” or “Winter on-peak usage” as defined in the two preceding paragraphs, respectively.

The charges for On-peak Maintenance Service shall be the greater of:

\$3.2200 per kW of Scheduled Maintenance Demand per week, plus **[R]**

\$0.045000 per kWh of Maintenance Energy; or **[I]**

110% of the price at the time of scheduling of a block of energy obtainable by Big Rivers in the futures market which is sufficient to meet the Member Cooperative's scheduled Maintenance Service requirements.

The charges for Off-peak Maintenance Service shall be:

\$3.2200 per kW of Scheduled Maintenance Demand per week, plus **[R]**

According to Standard Rate Schedule RDS per kWh of maintenance energy shall be the amount of energy purchased by the Member Cooperative for the QF Member in each hour during Scheduled Maintenance Service up to but not exceeding the Scheduled Maintenance Demand in each hour.

Excess Demand:

Excess demand is the amount in any hour by which the actual demand, less any Maintenance Demand, exceeds the previously established Maximum Unscheduled Capacity. Charges for Excess Energy Demand shall be in addition to the charges for Supplementary Service and shall be either:

DATE OF ISSUE May 15, 2014
DATE EFFECTIVE February 1, 2014

/s/ Billie J. Richert

ISSUED BY: Billie J. Richert,
Vice President Accounting, Rates, and
Chief Financial Officer
Big Rivers Electric Corporation, 201 Third Street, Henderson, KY 42420
*Issued by Authority of an Order of the Commission,
dated April 25, 2014, in Case No. 2013-00199*

KENTUCKY PUBLIC SERVICE COMMISSION
JEFF R. DEROUEN EXECUTIVE DIRECTOR
TARIFF BRANCH
<i>Brent Kirtley</i>
EFFECTIVE 2/1/2014
PURSUANT TO 807 KAR 5:011 SECTION 9 (1)



Your Touchstone Energy® Cooperative

(Name of Utility)

For All Territory Served By
Cooperative's Transmission System

P.S.C. KY. No. 27

Original SHEET NO. 47

CANCELLING P.S.C. KY. No. 26

Original SHEET NO. 45

RATES, TERMS AND CONDITIONS – SECTION 1

STANDARD RATE – QFS – Cogeneration/Small Power Production Sales Tariff – Over 100 KW – (continued)

One hundred-ten percent (110%) of Big Rivers' actual cost, including transmission service, to import energy from a third Party supplier to supply the Excess Demand of the Member Cooperative for the QF Member; or import energy from a Third Party Supplier to supply the Excess Demand of the Member Cooperative for the QF Member; or

If it is not necessary for Big Rivers to import energy from a Third Party Supplier, charges for Excess Demand shall be the greater of: a) the applicable demand charge in Standard Rate Schedule RDS times the highest Excess Demand recorded during the month; or b) 110% of the highest price received by Big Rivers during an Off-System Sales Transaction during the month times the sum of the Excess Demands measured during the month.

Big Rivers shall be the sole determinant of when and under what circumstances it is required to import energy from a Third-Party Supplier to provide Excess Demand.

Additional Charges:

Any and all costs incurred by Big Rivers as a result of the QF's failure to generate, including, without limitation, ancillary services necessary to maintain reliability on the Big Rivers' system, shall be charged to the Member Cooperative in addition to all other charges.

Interruptible Service:

Interruptible Supplementary Service or Interruptible Back-up Service will be made available, upon request. Terms and conditions of interruptible service will be as negotiated under special contract according to the terms of 807 KAR 5:054.

CANCELLED

December 15, 2023

**KENTUCKY PUBLIC
SERVICE COMMISSION**

DATE OF ISSUE May 15, 2014
DATE EFFECTIVE February 1, 2014

/s/ Billie J. Richert

ISSUED BY: Billie J. Richert,
Vice President Accounting, Rates, and
Chief Financial Officer
Big Rivers Electric Corporation, 201 Third Street, Henderson, KY 42420

*Issued by Authority of an Order of the Commission,
dated April 25, 2014, in Case No. 2013-00199*

**KENTUCKY
PUBLIC SERVICE COMMISSION**

JEFF R. DEROUEN
EXECUTIVE DIRECTOR

TARIFF BRANCH

Brent Kirtley

EFFECTIVE
2/1/2014
PURSUANT TO 807 KAR 5:011 SECTION 9 (1)



Your Touchstone Energy® Cooperative

(Name of Utility)

For All Territory Served By
Cooperative's Transmission System

P.S.C. KY. No. 27

Original SHEET NO. 48

CANCELLING P.S.C. KY. No. 26

Original SHEET NO. 46

RATES, TERMS AND CONDITIONS – SECTION 1

STANDARD RATE – QFS – Cogeneration/Small Power Production Sales Tariff – Over 100 KW – (continued)

Interconnections:

Big Rivers requires a three-party interconnection agreement between the QF Member, Big Rivers, and the Member Cooperative prior to service under this tariff. Big Rivers shall make inter-connections with the Member Cooperative, or the QF Member, or both as required and the QF Member will pay for the inter-connection costs in accordance with 807 KAR 5:054 Section 6 and the interconnection agreement.

System Emergencies:

During System Emergencies, Big Rivers may discontinue sales in accordance with 807 KAR 5:054 Section 6.

Loss Compensation:

Power and energy delivered by Big Rivers pursuant to this rate schedule shall be metered at or compensated to Big Rivers' point of delivery to the Member Cooperative. Where metering of the QF Member's load is at a point of delivery on a Member Cooperative's distribution system, metered demand and energy shall be adjusted to compensate for distribution losses prior to billing hereunder.

CANCELLED
December 15, 2023
**KENTUCKY PUBLIC
SERVICE COMMISSION**

DATE OF ISSUE May 15, 2014
DATE EFFECTIVE February 1, 2014

/s/ Billie J. Richert

ISSUED BY: Billie J. Richert,
Vice President Accounting, Rates, and
Chief Financial Officer
Big Rivers Electric Corporation, 201 Third Street, Henderson, KY 42420
*Issued by Authority of an Order of the Commission,
dated April 25, 2014, in Case No. 2013-00199*

**KENTUCKY
PUBLIC SERVICE COMMISSION**
JEFF R. DEROUEN
EXECUTIVE DIRECTOR
TARIFF BRANCH
Brent Kirtley
EFFECTIVE
2/1/2014
PURSUANT TO 807 KAR 5:011 SECTION 9 (1)

CANCELLED

December 15, 2023



KENTUCKY PUBLIC SERVICE COMMISSION

Your Touchstone Energy® Cooperative
(Name of Utility)

For All Territory Served By
Cooperative's Transmission System

P.S.C. KY. No. 27

Original SHEET NO. 49

CANCELLING P.S.C. KY. No. 26

Original SHEET NO. 47

RATES, TERMS AND CONDITIONS – SECTION 1

**STANDARD RATE – QFS – Cogeneration/Small Power Production Sales – Over 100 KW
Billing Form**

BIG RIVERS ELECTRIC CORP.

INVOICE
P. O. BOX 24
MONTH ENDING mm/dd/yy

HENDERSON, KY 42419-0024

TO: COGENERATOR AND SMALL POWER PRODUCER SALES

ACCOUNT

DELIVERY POINTS

SERVICE FROM mm/dd/yy THRU mm/dd/yy
USAGE:

USAGE	DEMAND	TIME	DAY	METER	MULT	KW DEMAND
		00:00 A (or P)	mm/dd		1000	00,000
POWER FACTOR		BASE	PEAK	AVERAGE		KW DEMAND BILLED
SUPPLEMENTAL DEMAND	00.00%	00.00%	00.00%	00.00%		000,000
UNSCHEDULED BACKUP DEMAND	00.00%	00.00%	00.00%	00.00%		000,000
EXCESS DEMAND	00.00%	00.00%	00.00%	00.00%		000,000
CUMULATIVE EXCESS DEMAND	00.00%	00.00%	00.00%	00.00%		000,000

	PREVIOUS	PRESENT	DIFFERENCE	MULT.	KWH USED
ENERGY	00000.000	00000.000	0000.000	1000	00,000,000
SUPPLEMENTAL ENERGY	00000.000	00000.000	0000.000	1000	00,000,000
MAINTENANCE ENERGY	00000.000	00000.000	0000.000	1000	00,000,000

SUPPLEMENTARY SERVICE

DEMAND	kW	TIMES	\$	EQUALS	\$
P/F PENALTY	kW	TIMES	\$	EQUALS	\$
ENERGY	kWh	TIMES	\$	EQUALS	\$
SUBTOTAL					\$

UNSCHEDULED BACK-UP SERVICE

DEMAND	kW	TIMES	\$	EQUALS	\$
--------	----	-------	----	--------	----

MAINTENANCE SERVICE ON-PEAK

DEMAND PER-WEEK (IF APPLICABLE)	kW	TIMES	\$	EQUALS	\$
ENERGY (IF APPLICABLE)	kWh	TIMES	\$	EQUALS	\$
SCHEDULE ENERGY BLOCK (IF APPLICABLE)					
TOTAL AMOUNT DUE					\$

OFF-PEAK

DEMAND PER-WEEK	kW	TIMES	\$	EQUALS	\$
ENERGY	kWh	TIMES	\$	EQUALS	\$
SUBTOTAL					\$

EXCESS SERVICE

EXCESS DEMAND (IF APPLICABLE)	kW	TIMES	\$	EQUALS	\$
CUMULATIVE EXCESS DEMAND (IF APPLICABLE)	kW	TIMES	\$	EQUALS	\$
IMPORTED EXCESS ENERGY (IF APPLICABLE)	kWh	TIMES	\$	EQUALS	\$
TOTAL AMOUNT DUE					\$

TOTAL AMOUNT DUE \$ 00,000.00

LOAD FACTOR

ACTUAL	BILLED	MILLS PER KWH
00.00%	00.00%	00.00

DUE IN IMMEDIATELY AVAILABLE FUNDS ON OR BEFORE THE FIRST WORKING DAY AFTER THE 24TH OF THE MONTH

DATE OF ISSUE May 15, 2014
DATE EFFECTIVE February 1, 2014

/s/ Billie J. Richert

ISSUED BY: Billie J. Richert,
Vice President Accounting, Rates, and
Chief Financial Officer
Big Rivers Electric Corporation, 201 Third Street, Henderson, KY 42420

*Issued by Authority of an Order of the Commission,
dated April 25, 2014, in Case No. 2013-00199*

**KENTUCKY
PUBLIC SERVICE COMMISSION**

**JEFF R. DEROUEN
EXECUTIVE DIRECTOR**

TARIFF BRANCH

EFFECTIVE

2/1/2014

PURSUANT TO 807 KAR 5:011 SECTION 9 (1)