



A Touchstone Energy Cooperative 

RECEIVED

NOV 11 2022

PUBLIC SERVICE
COMMISSION

November 11, 2022

Ms. Linda Bridwell, P.E.
Executive Director
Kentucky Public Service Commission
P.O. Box 615
211 Sower Boulevard
Frankfort, KY 40602

VIA ELECTRONIC DELIVERY

RE: In the Matter of the *Application of East Kentucky Power Cooperative, Inc. for Issuance of a Certificate of Public Convenience and Necessity, Approval of Certain Assumption of Evidences of Indebtedness and Establishment of a Community Solar Tariff*, Case No. 2016-00269 - Annual Report of East Kentucky Power Cooperative, Inc.

Dear Ms. Bridwell,

In accordance with the November 22, 2016 Order of the Kentucky Public Service Commission (“Commission”) in the above-styled case, please accept this as the annual report of East Kentucky Power Cooperative, Inc. (“EKPC”) regarding the progress of EKPC’s Community Solar Facility. With regard to the Commission’s request for information on the total number of participating retail customers and the number of participating retail members identified by owner-member, the following table details this information as of October 31, 2022:

Co-op	Meters	# Licenses
Blue Grass Energy	49	278
Clark Energy	15	25
Cumberland Valley Electric	1	1
Farmers RECC	6	28
Fleming-Mason Energy	8	88
Grayson RECC	5	107
Jackson Energy	8	341
Inter-County Energy	14	41
Licking Valley RECC	4	6
Nolin RECC	19	50
Owen Electric	54	256
Salt River Electric	18	198
Shelby Energy	19	119
South Kentucky RECC	17	176
Total	237	1,714

4775 Lexington Road, POB 707
Winchester, KY 40392
859-744-4812

In addition, EKPC is providing copies of the marketing materials used to promote participation in the Community Solar Facility.

EKPC continues to believe that the Community Solar Facility furthers EKPC's efforts to fulfill its strategic objectives and offers our owner-members' retail customers the ability to voluntarily participate in a facilities-based renewable energy program at the least possible cost.

Should you have any questions or require any further information, please do not hesitate to contact me.

Sincerely,

A handwritten signature in blue ink, appearing to read "Chris Adams", written in a cursive style.

Chris Adams

Director, Regulatory & Compliance Services

Enc.

Joe Settles

From: Cooperative Solar <info+cooperativesolar.com@ccsend.com>
Sent: Friday, April 22, 2022 8:17 AM
To: Joe Settles
Subject: Cooperative Solar Spring 2022

Spring 2022



Cooperative Solar

Kentucky's Touchstone Energy® Cooperatives 

[Visit Cooperative Solar](#)



Cooperative Solar Farm One hosts visit by U.S. Energy Secretary



U.S. Energy Secretary Jennifer Granholm recently stopped by Cooperative Solar Farm One, along with Kentucky Energy & Environment Cabinet Secretary Rebecca Goodman and Kentucky Lt. Gov. Jacqueline Coleman. They learned how we are helping to make renewable energy accessible for more than 1.1 million Kentucky residents.



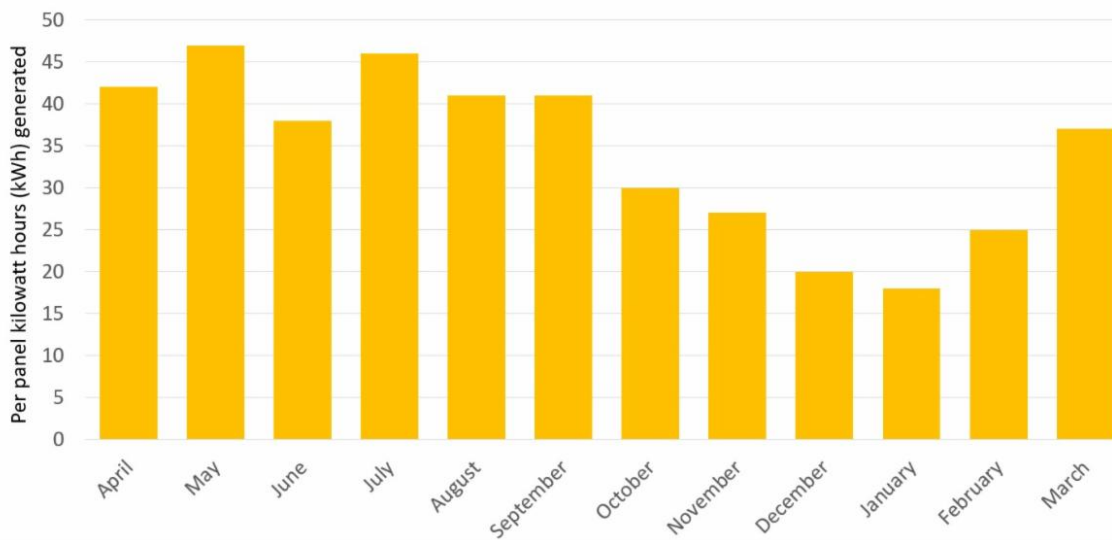
University of Kentucky students tour our solar farm



It was a chilly March day, but the University of Kentucky Energy Club braved the weather recently to visit Cooperative Solar Farm One and learn more about how we are making clean, renewable energy. Club members also got a look at our pollinator habitat.

Would you like to tour Cooperative Solar Farm One with your group? The 60-acre solar farm is located at the office of East Kentucky Power Cooperative, approximately eight miles east of Lexington on U.S. 60. To schedule a tour, please contact us at info@cooperativesolar.com.

A Look At The Past Year of Solar Production



License panels today

License your solar panels today by going to www.CooperativeSolar.com.

We build and maintain the panels, you get the benefits!

Cooperative Solar | info@cooperativesolar.com | CooperativeSolar.com

STAY CONNECTED



Join Our Solar Community Today!

Cooperative Solar | 4775 Lexington Road, Winchester, KY 40391

[Unsubscribe joe.settles@ekpc.coop](mailto:joe.settles@ekpc.coop)

[Update Profile](#) | [Constant Contact Data Notice](#)

Sent by info@cooperativesolar.com powered by



Joe Settles

From: Kentucky's Touchstone Energy Cooperatives <info+envirowatts@ccsend.com>
Sent: Friday, September 16, 2022 10:01 AM
To: Joe Settles
Subject: Co-ops continue working for you

CAUTION: This email originated from outside of EKPC. Do not click links or open attachments unless you recognize the sender and know the content is safe.

September 2022



Kentucky's Touchstone Energy Cooperatives

envirowatts
earth friendly energy

The right choice in renewable energy

Solar Wind Biomass Hydro

Co-ops continue working for you



Like groceries, gasoline and inflation, energy costs are rising.

Since mid-2021, the cost of fuel for power plants and market power has skyrocketed. Likely, you have seen the impact on your monthly power bill, especially during hot summer months and cold winter months when your air-conditioning and heating systems are working harder, driving electric usage up.

Your electric cooperative is working hard to keep costs affordable and service reliable.

Few things in life are as reliable as electricity. Still, we mostly take it for granted that the lights will come on when the switch is flipped — at least until we read the news about massive power outages in Texas and California in recent times.

Extreme weather events in those states exposed weaknesses in their systems, but also provided valuable lessons about the reliability we enjoy here in Kentucky. Through strategic

thinking and constant improvement, Kentucky's Touchstone Energy Cooperatives are prepared to meet our members' need for electricity 24/7/365.

How? Following our parents' advice, we never put all our eggs in one basket. The sources of electricity for the 16 owner-members are strategically diversified to meet the round-the-clock needs of the homes and businesses they serve.

EKPC generates electricity for the co-ops through four plants fueled by coal and natural gas, along with its portfolio of renewable resources.

On our system, we also recognize renewables are an essential part of our energy production. They offer competitive prices with low or no carbon emissions. Our Cooperative Solar Farm One is one of the largest solar projects in Kentucky. We purchase hydropower from the federal Southeastern Power Administration through Laurel and Wolf Creek dams. Six more cooperative plants generate renewable power from methane gas at landfills.

We also have options outside of our own power plants. We are part of a power market covering 13 states called PJM Interconnection. This allows us to tap into power sources outside of Kentucky.

PJM manages the largest electric power grid in North America, and administers one of the world's largest competitive electricity markets. Being a member greatly helps EKPC to ensure reliable service. It's like belonging to a very large reserve power sharing organization.

Our owner-members and the 1.1 million people they serve can rest easy knowing that their need for electricity can be reliably met through our diversified power generation sources. We've got this.

Thank you for being a member of your local Touchstone Energy Cooperative, and for participating in the envirowatts program. Learn more about how co-ops are working for you at [Rising Costs - Together We Save \(togetherwesaveky.com\)](http://togetherwesaveky.com)

Check out our EV Calculator to find your next ride



Is an EV right for you? With prices dropping and technology changing, Kentucky's Touchstone Energy Cooperatives have seen a surge of interest in electric vehicles.

We offer an EV calculator that compares makes and models. It's free, easy to use and unbiased. Go to [Electric Vehicle Calculator](#) and check it out!



Easy. Affordable. Renewable.



Cooperative Solar

Learn more about Cooperative Solar

Looking for another way to purchase renewable energy? Check out our [Cooperative Solar](#) program.

Co-op members can license solar panels at Kentucky's Touchstone Energy Cooperatives' not-for-profit 60-acre solar farm. You can tap into renewable solar energy for your home or business without the headaches of installing and maintaining solar panels themselves.

Learn more and submit an application at www.cooperativesolar.com.

Want to do more?



The right choice for you

We know many Kentuckians are looking for ways to support renewable energy efforts. Again, we thank you for your support. Feel free to share this e-newsletter and talk about your participation with friends and family.

You can also learn about ways to improve your home's energy efficiency by visiting www.togetherwesaveky.com.

EKPC | 4775 Winchester Rd, Lexington, KY 40391

[Unsubscribe joe.settles@ekpc.coop](mailto:joe.settles@ekpc.coop)

[Update Profile](#) | [Constant Contact Data Notice](#)

Sent by info@envirowattsky.com powered by



Try email marketing for free today!

Joe Settles

From: Kentucky's Touchstone Energy Cooperatives <info+envirowatts.com@ccsend.com>
Sent: Wednesday, March 23, 2022 8:55 AM
To: Joe Settles
Subject: Thank you for being a co-op member





Your local co-op is part of Kentucky's Touchstone Energy® Cooperatives. We're different from traditional power companies. We're part of a nationwide network of member-owned electric co-ops. That means, your cooperative puts members first and connects you to the power and information in your community.

We operate on four core values: Integrity, Innovation, Accountability and Commitment to Community. By participating in our envirowatts program, you're a part of that innovation. We're constantly looking for ways to be better environmental stewards, meet our members' ever-evolving needs and provide sustainable power.

We demonstrate our commitment to community by supporting reputable organizations such as Special Olympics Kentucky, Honor Flight Kentucky and the Kentucky Ronald McDonald Houses. It's our way of saying thank you for being a co-op member and a member of the community.

If you're interested in learning how we support the local communities we serve, click below.

[Learn more here](#)

How enviowatts works

There are many benefits of purchasing enviowatt portions: you help support the future of renewable energy and you help reduce carbon dioxide emissions – all things to feel good about.

With four options, including solar, wind, biomass and hydro, you have the choice of how your renewable energy dollars are spent. You have the power to designate how your \$2.75 portion is used. Each renewable energy option has a varying amount of carbon dioxide offset per portion.

For example under current market prices, a \$2.75 portion of solar supplies around 1,559 pounds of carbon dioxide offset. That's the equivalent to removing emissions from consumption of 79 gallons of gasoline or annual greenhouse gas emissions from 1,754 miles/year driven by an average passenger vehicle.

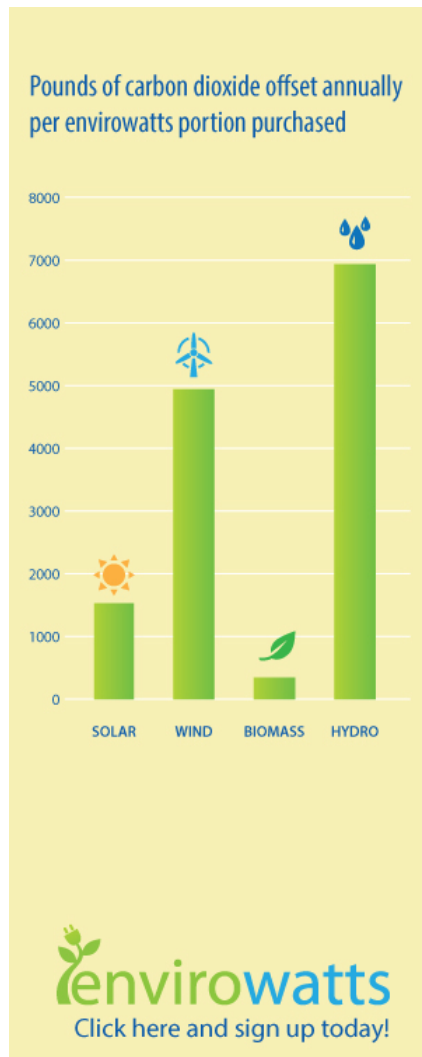
If you purchase a \$2.75 portion of wind, you offset around 4,973 pounds of carbon dioxide. That's the equivalent to removing emissions from consumption of 253 gallons of gasoline or annual greenhouse gas emissions from 5,595 miles/year driven by an average passenger vehicle.

Purchasing a \$2.75 portion of hydro offsets around 6,921 pounds of carbon dioxide. That's the equivalent to removing emissions from consumption of 353 gallons of gasoline or annual greenhouse gas emissions from 7,787 miles/year driven by an average passenger vehicle.

If you purchase a \$2.75 portion of biomass you offset around 311 pounds of carbon dioxide. That's the equivalent to removing emissions from consumption of 16 gallons of gasoline or annual greenhouse gas emissions from 350 miles/year driven by an average passenger vehicle.

Plus, there's no maximum of portions you can purchase. To increase the green benefits of enviowatts, you can purchase as many portions as you'd like.

**EPA.gov's Greenhouse Gas Equivalencies Calculator used to calculate savings. Current market prices are as of March 2021.*





Easy. Affordable. Renewable.



Cooperative Solar

What's Cooperative Solar?

Looking for another way to purchase renewable energy? Check out our [Cooperative Solar](#) program.

Co-op members can license solar panels at Kentucky's Touchstone Energy Cooperatives' not-for-profit 60-acre solar farm. You can tap into renewable solar energy for your home or business without the headaches of installing and maintaining solar panels themselves.

Many co-op members are interested in going solar but they face obstacles, such as:

- Covering their roof with solar panels.
- Maintaining the equipment themselves.
- Their home's roof is shaded by trees or is not aligned for optimum sun exposure.
- They rent their dwelling.
- Deed restrictions prevent installation of panels.

Cooperative Solar is renewable energy that is easy and affordable. Your electric cooperatives install and maintain solar panels on our property; and, with a one-time payment, coop members get credit on their monthly power bill for the energy produced by their share of the panels over the next 25 years.

For a one-time payment of \$460 per panel, participating members will receive a 25-year license to one of the panels. That means they will get credit on their monthly power bill for their proportional share of the energy generated by the solar farm, as well as the market value of their panel's capacity. And they can monitor panel performance online.

Cooperative Solar participants are joining a community of co-op members who are committed to the environment and the future.

Many businesses have sustainability goals that can be met through Cooperative Solar, which offers participants the option of retiring or monetizing the solar energy renewable credits associated with their share of the farm.

This is an easy, cost-effective way to enjoy the benefits of renewable solar energy and also manage energy costs.

Cooperative Solar Farm One is one of the biggest solar installations in Kentucky. Your cooperatives are leading the way in bringing renewable energy to our members and embracing the technologies of the future. Learn more and submit an application at www.cooperativesolar.com.

Cooperative Solar

Want to do more?



The right choice for you

We know many Kentuckians are looking for ways to support renewable energy efforts. Again, we thank you for your support. Feel free to share this e-newsletter and talk about your participation with friends and family. You can also learn about ways to improve your home's energy efficiency by visiting www.togetherwesaveky.com. There's even an electric vehicle calculator to help you understand the benefits of switching to an EV.

If you have any questions, feel free to contact us at info@envirowattsky.com.

EKPC | 4775 Winchester Rd, Lexington, KY 40391

[Unsubscribe joe.settles@ekpc.coop](mailto:joe.settles@ekpc.coop)

[Update Profile](#) | [Constant Contact Data Notice](#)

Sent by info@envirowattsky.com powered by





Cooperative Solar



We supply the power. You decide how it is made.

Each person's reason for exploring renewable energy is unique. That's why we offer a customizable renewable energy solution tailored to your goals and budget. We offer renewable energy from a number of innovative sources including solar, wind, biomass and hydro.

You can select the option that is right for you.

Ready to go renewable?

Contact your local Kentucky Touchstone Energy Cooperative today.

Kentucky's Touchstone Energy[®] Cooperatives 

from participating co-ops

envirowattsky.com | cooperativesolar.com



Sue is solar
How about you?



Cooperative Solar

small changes
BIG IMPACT



**BLUEGRASS
GREENSOURCE**

*This email is sponsored content by **Kentucky's Touchstone Energy Cooperatives.***



Cooperative Solar Farm One

Affordable, hassle-free access to solar energy at home

Homeowners and business owners who have sustainability goals to lower their carbon footprint or want to save money on their monthly energy bills have been investing in solar energy for years. Solar is a clean, affordable way to produce energy using only the power of the sun.

[Learn more about Cooperative Solar »](#)