

MAY 07 2018

PUBLIC SERVICE
COMMISSION

May 2, 2018

Mr. Brandon S. Bruner, Branch Manager
Division of Administration, Filings Branch
Kentucky Public Service Commission
P.O. Box 615
Frankfort, KY 40602

RE: Case No. 2016-00147
Latonia Lakes Water Main Replacement

Mr. Brandon S. Bruner:

Below is the break down of construction costs for the above mentioned case number. The amounts are classified into appropriate accounts in accordance with the Uniform System of Accounts.

Account #331 Water Mains	\$ 1,308,442.60
Account #333 Services	\$ 155,766.98
Account #335, Hydrants	\$ <u>93,460.18</u>
Total Project Cost	\$ 1,557,669.76

I have also enclosed copies of "as-built" drawings and a certified statement from a professional engineer stating that the project has been completed in accordance with the approved plans and specifications as required by this order. This should complete all items as required by this order. If you have any questions, please be sure to let me know.

Sincerely,



Bob Harthun
Construction Supervisor

Enclosures (2)

Cc: File

Mrs. Lindsey Rehtin – V.P. Financial and Support Services, NKWD
Mr. Jack Hughes – District PSC Attorney



VIOX & VIOX

Civil Engineers, Surveyors, and Landscape Architects

466 Erlanger Road | 215B Main Street,
Erlanger, Kentucky 41018 | Milford, Ohio 45150

Tel: 859.727.3293 | Tel: 513.576.1000
Fax: 859.727.8452

www.vioxinc.com

March 23, 2018

Northern Kentucky Water District
P.O. Box 18640
2835 Crescent Springs Road
Erlanger, KY 41018
Fax: 859 578-7893

ATTN: John Scheben
Distribution & Special Projects Manager

RE: Latonia Lakes Water Main Replacement
Project Construction Inspection Services/Project Certification
Kenton County, KY

Dear Mr. Scheben,

The Latonia Lakes Water Main Replacement project is now substantially complete. Per your request, staff under my direction has performed periodic inspection throughout the construction phase.

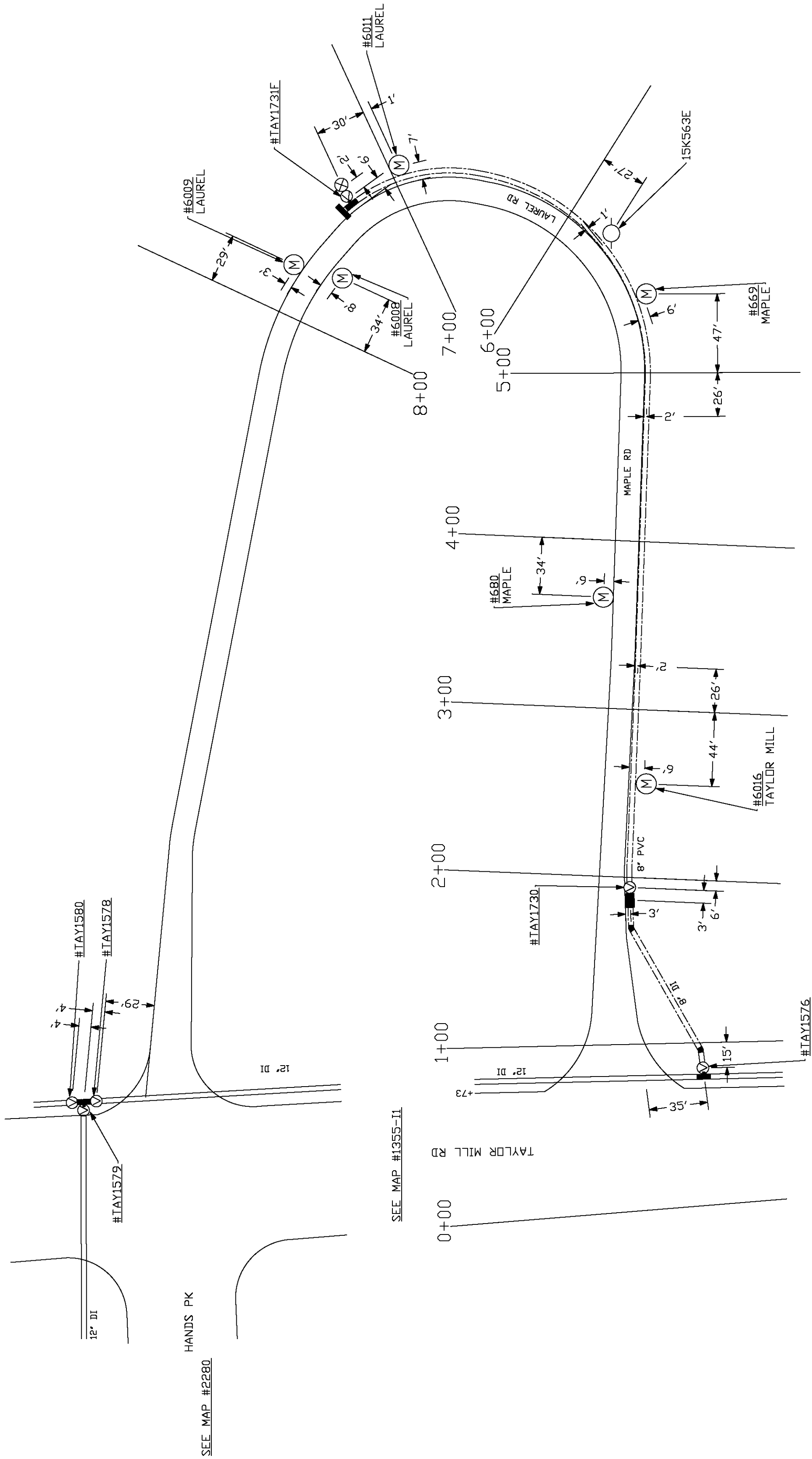
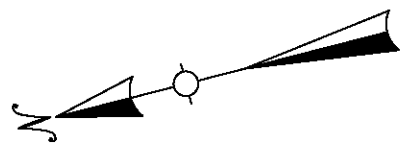
I hereby certify that to the best of my knowledge, the water main extension for this project was constructed in accordance with the approved plans and specifications.

If you have any questions or need any additional information regarding the construction of this water main, please feel free to contact me.

Respectfully Submitted,

Marc D. Gloyeske, P.E.
Design Engineer

cc: Michelle L. Bollman, P.E.



SEE MAP #1355-II

SEE MAP #2280

LEGEND

- ===== 4" WATER MAIN
- ===== 6" WATER MAIN
- ===== 8" WATER MAIN
- ===== 12" WATER MAIN
- ⊙ = VALVE ⊗ = FIRE HYDRANT
- Ⓜ = METER Ⓜ = METER INSIDE
- ⊙ = UTILITY POLE ⊙ = LAMP POST

Q-15

REC-675

NORTHERN KENTUCKY WATER DISTRICT
LOCATION MAPS

MAPLE ROAD / LAUREL ROAD

DRAWN BY: SAR
TRACED BY: SAR
CHECKED BY: ADAM S

REVISED DATE

SCALE: 1" = 50'
DATE: 3-22-18

FIELD BOOK NO. 150

DRAWING NO.

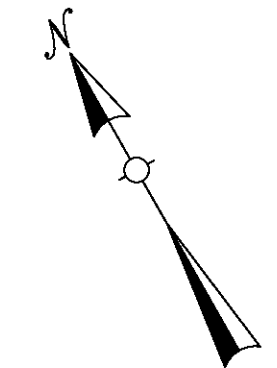
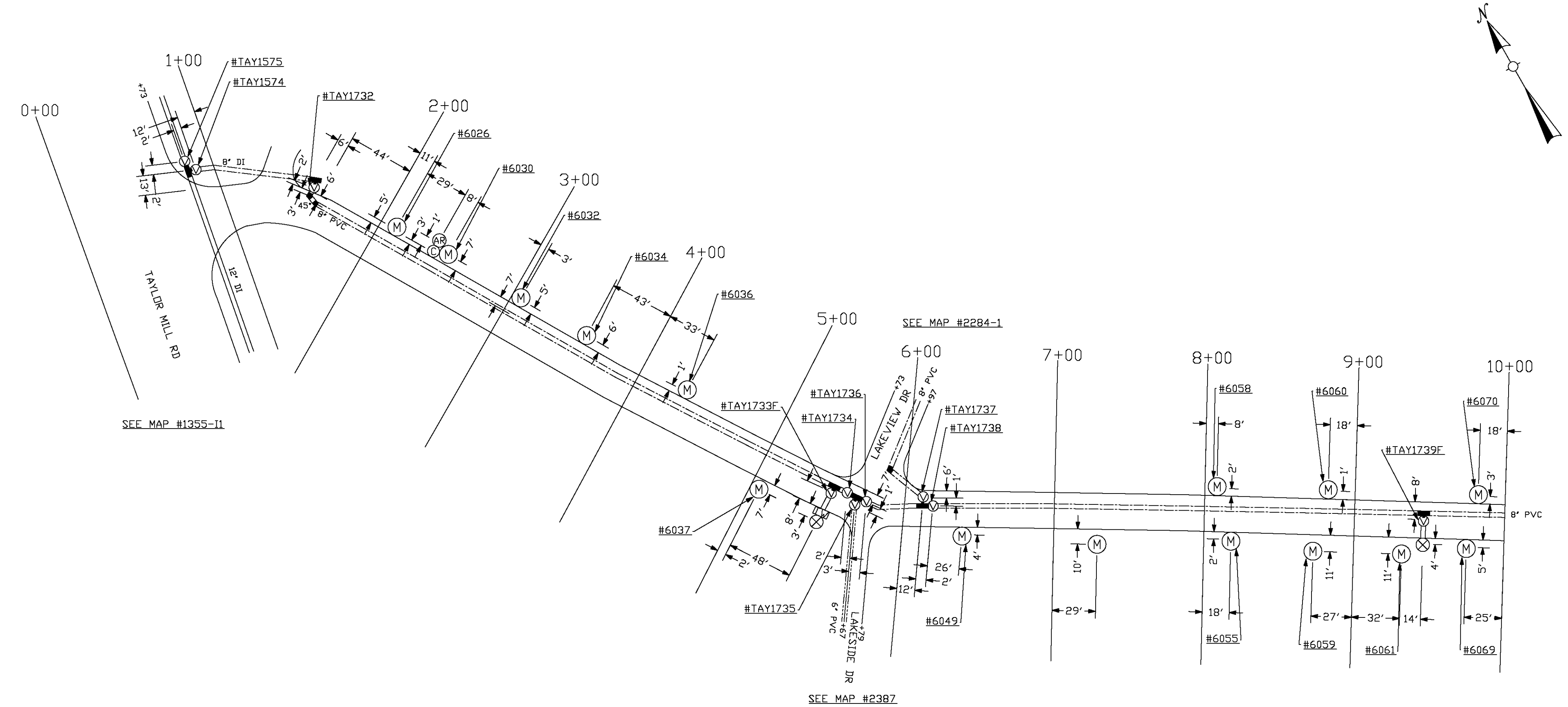
2092-1

- = VALVE ⊗ = FIRE HYDRANT
 ⊗ = METER ⊞ = METER INSIDE
 ○ = UTILITY POLE ⊙ = LAMP POST
- ===== 4" WATER MAIN
 ===== 6" WATER MAIN
 ===== 8" WATER MAIN
 ===== 12" WATER MAIN

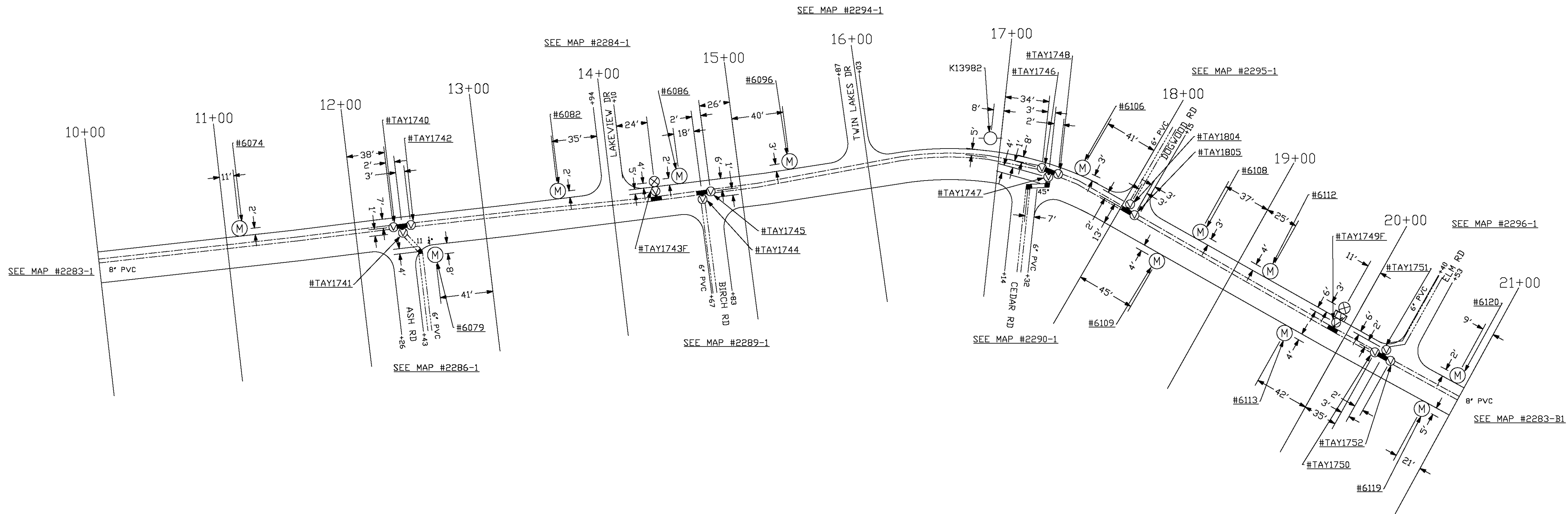
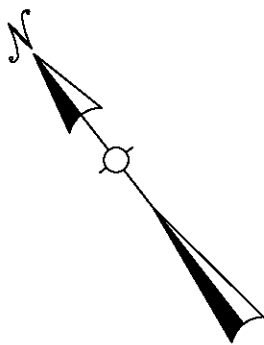
LEGEND

DRAWN BY: SAR		REVISED DATE	SCALE: 1" = 50'
TRACED BY: SAR			DATE: 3-27-18
CHECKED BY: ADAM S			DRAWING NO.
FIELD BOOK NO. 150			2283-1

0-15 REC-675
 NORTHERN KENTUCKY WATER DISTRICT
 LOCATION MAPS
 CLUBHOUSE DRIVE



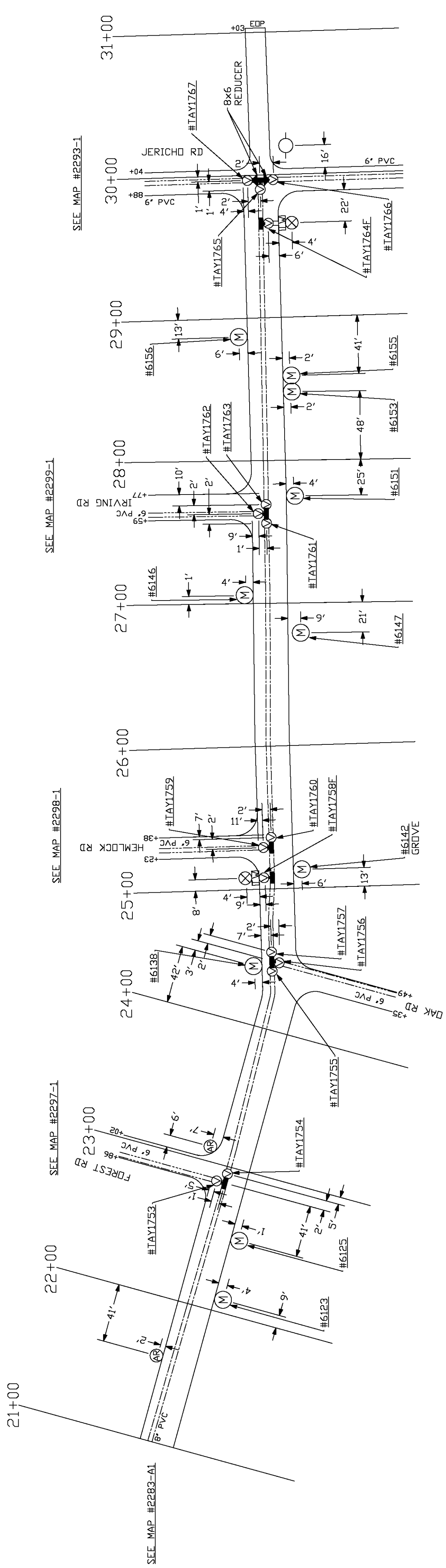
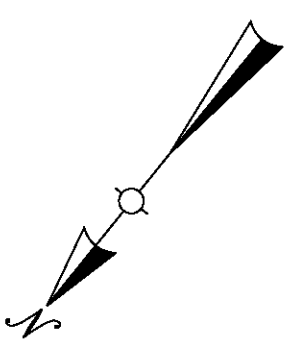
SEE MAP #2283-A1



LEGEND

- ==== 4" WATER MAIN
- ==== 6" WATER MAIN
- ==== 8" WATER MAIN
- ⊙ = VALVE
- ⊗ = FIRE HYDRANT
- ⊕ = METER
- Ⓜ = METER INSIDE
- Ⓛ = UTILITY POLE
- ⊙ = LAMP POST

DRAWN BY: SAR		REVISED DATE:	
TRACED BY: SAR		SCALE: 1" = 50'	
CHECKED BY: ADAM S		DATE: 3-27-18	
FIELD BOOK NO. 150		DRAWING NO. 2283-A1	
CLUBHOUSE DRIVE NORTHERN KENTUCKY WATER DISTRICT LOCATION MAPS			
Q-15		REC-675	



SEE MAP #2293-1

SEE MAP #2299-1

SEE MAP #2298-1

SEE MAP #2297-1

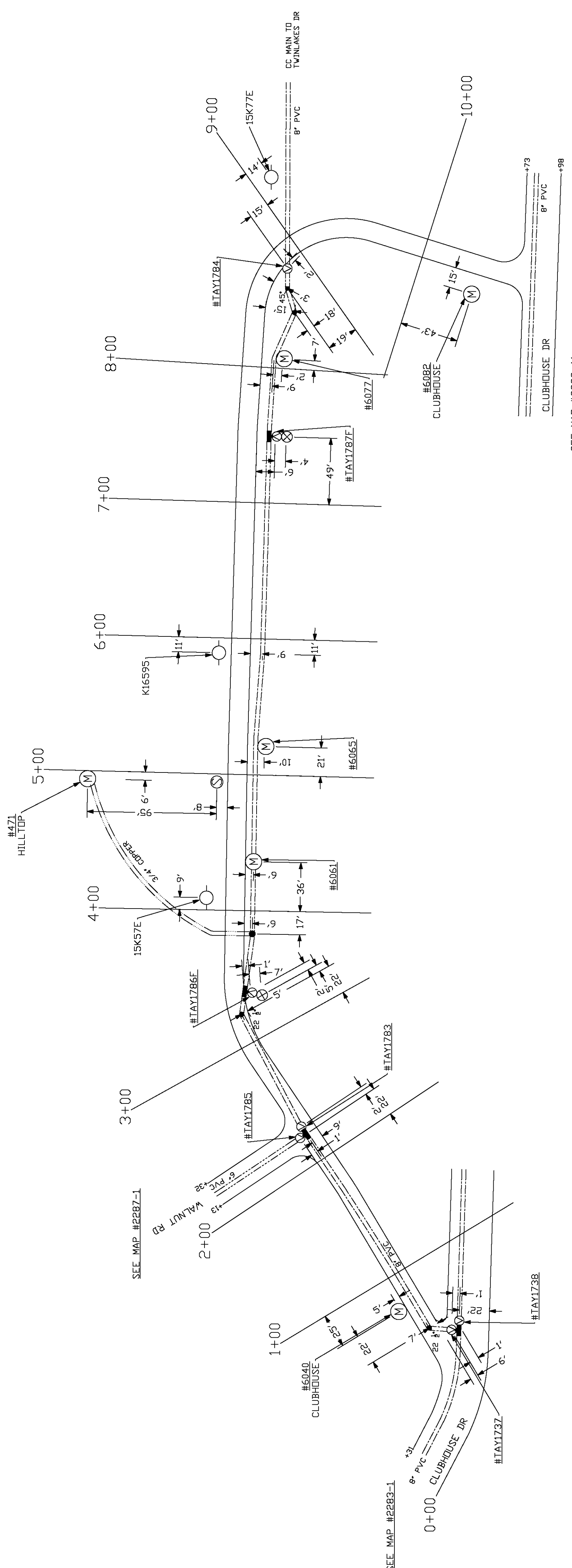
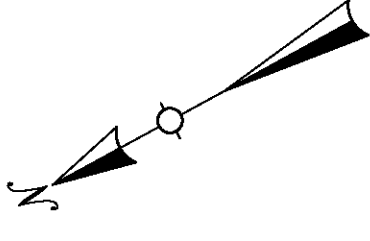
SEE MAP #2292-1

LEGEND

- ===== 4" WATER MAIN
- ===== 6" WATER MAIN
- ===== 8" WATER MAIN

- ⊙ = VALVE ⊗ = FIRE HYDRANT
- Ⓜ = METER ⊞ = METER INSIDE
- = UTILITY POLE ⊙ = LAMP POST

Q-15 REC-675	
NORTHERN KENTUCKY WATER DISTRICT LOCATION MAPS	
CLUBHOUSE DRIVE	
DRAWN BY: SAR	REVISED DATE
TRACED BY: SAR	
CHECKED BY: ADAM S	
FIELD BOOK NO. 150	SCALE: 1" = 50' DATE: 3-27-18 DRAWING NO. 2283-B1



LEGEND

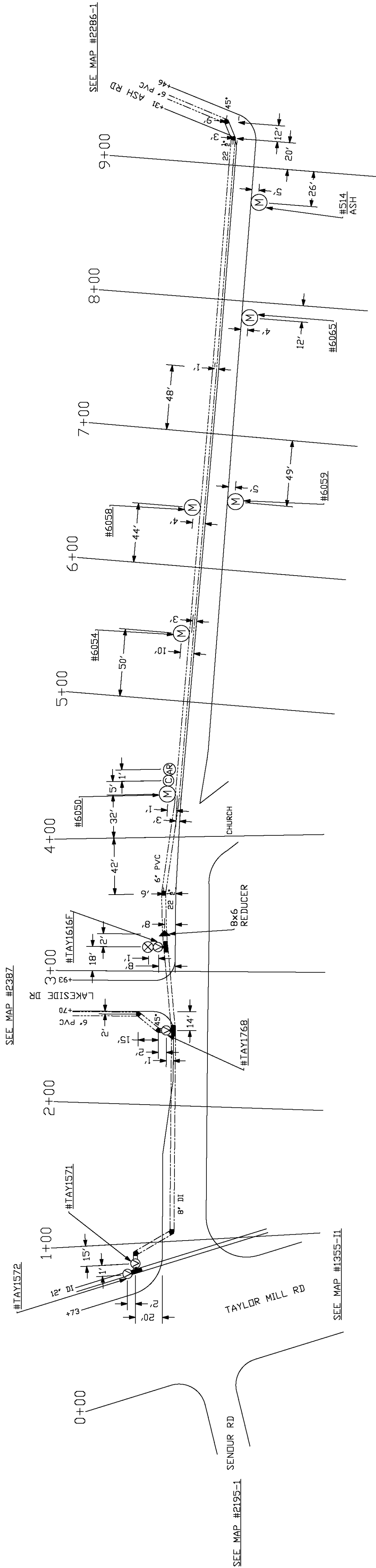
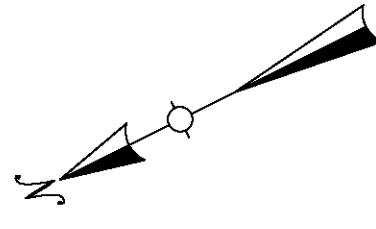
- ===== 4" WATER MAIN
- ===== 6" WATER MAIN
- ===== 8" WATER MAIN

- ⊕ = VALVE ⊗ = FIRE HYDRANT
- Ⓜ = METER ⊞ = METER INSIDE
- ⊙ = UTILITY POLE ⊙ = LAMP POST

Q-15

REC-675

NORTHERN KENTUCKY WATER DISTRICT LOCATION MAPS		
LAKEVIEW DRIVE		
DRAWN BY: SAR TRACED BY: SAR CHECKED BY: ADAM S	REVISED DATE	SCALE: 1" = 50' DATE: 4-9-18
FIELD BOOK NO. 150	DRAWING NO. 2284-1	



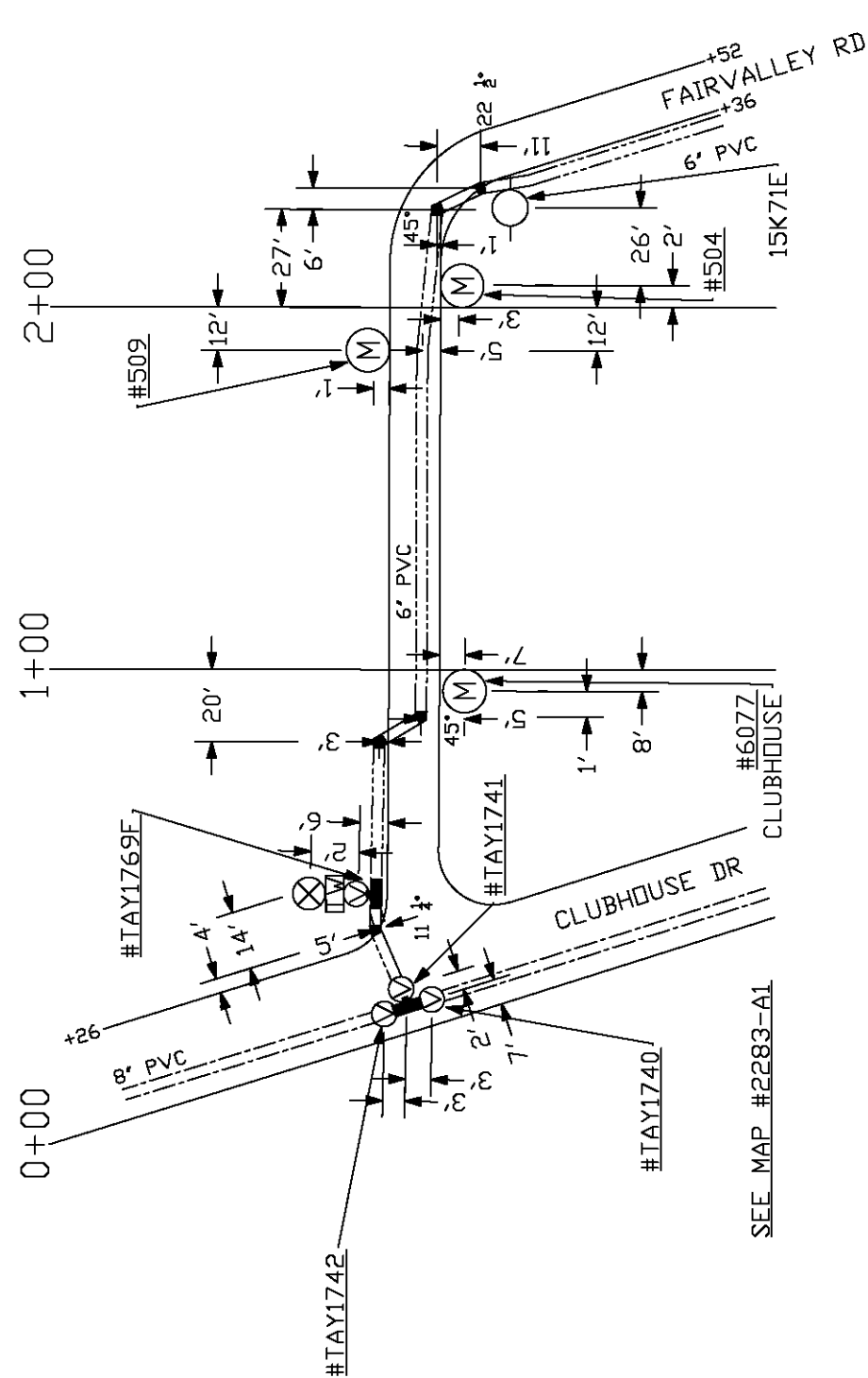
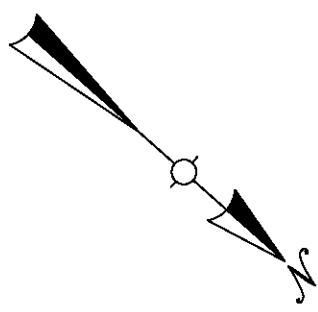
LEGEND

- ===== 4" WATER MAIN
- ===== 6" WATER MAIN
- ===== 8" WATER MAIN
- ===== 12" WATER MAIN

- ⊗ = VALVE ⊗ = FIRE HYDRANT
- Ⓜ = METER ⊠ = METER INSIDE
- = UTILITY POLE ⊙ = LAMP POST

Q-15 REC-675

NORTHERN KENTUCKY WATER DISTRICT LOCATION MAPS		
FAIRVALLEY ROAD		
DRAWN BY: SAR	REVISED DATE	SCALE: 1" = 50'
TRACED BY: SAR		DATE: 4-2-18
CHECKED BY: ADAM S		DRAWING NO.
FIELD BOOK NO. 150		2285-1



SEE MAP #2285-1

SEE MAP #2283-A1

LEGEND

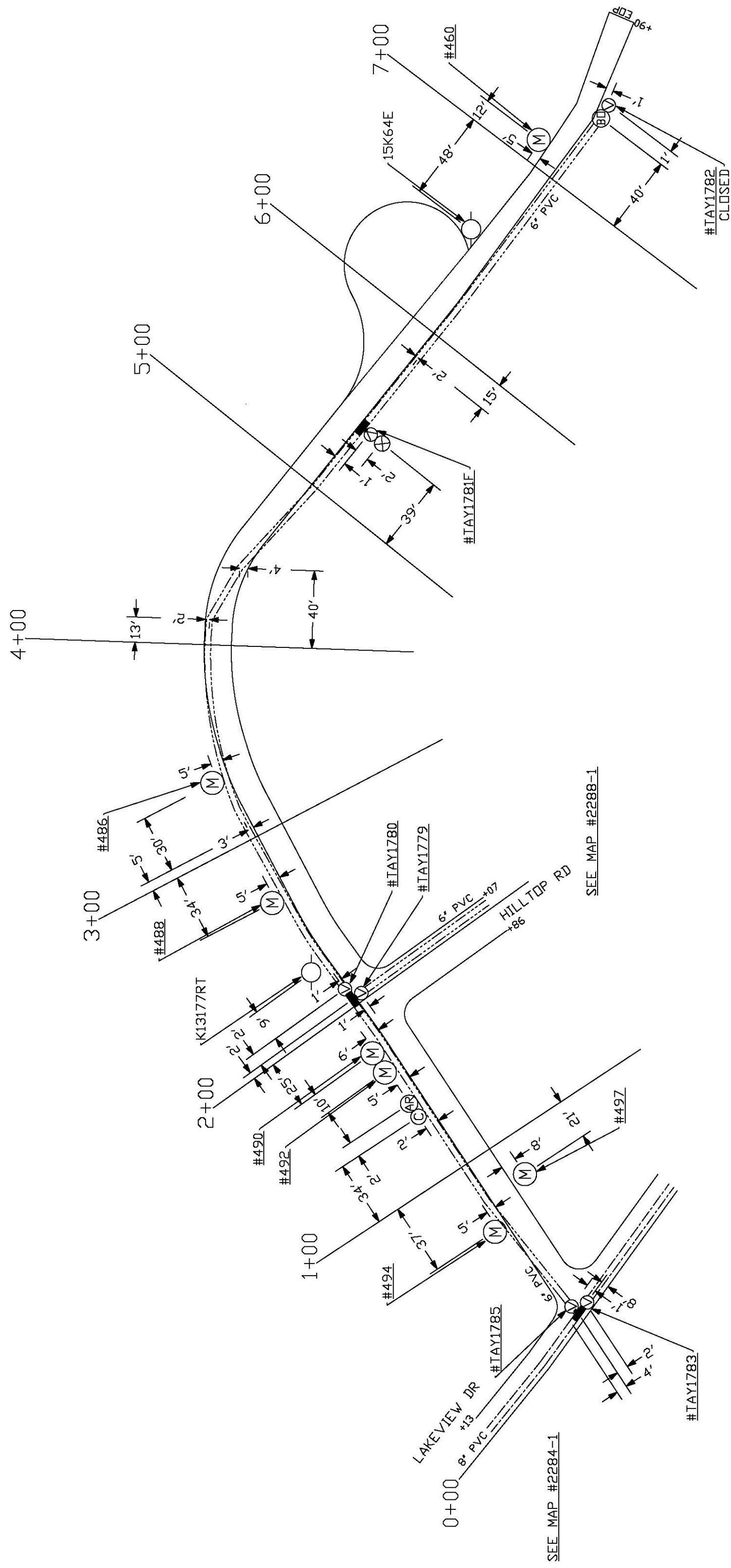
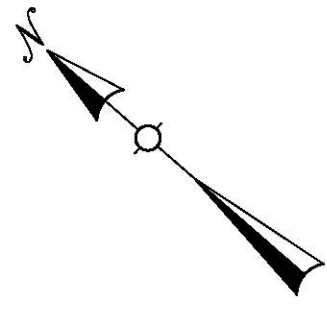
- ===== 4" WATER MAIN
- ===== 6" WATER MAIN
- ===== 8" WATER MAIN

- ⊕ = VALVE
- ⊗ = FIRE HYDRANT
- Ⓜ = METER
- Ⓜ = METER INSIDE
- ⊙ = UTILITY POLE
- ⊙ = LAMP POST

Q-15

REC-675

NORTHERN KENTUCKY WATER DISTRICT LOCATION MAPS		
ASH ROAD		
DRAWN BY: SAR	REVISED DATE	SCALE: 1" = 50'
TRACED BY: SAR		DATE: 4-2-18
CHECKED BY: ADAM S		DRAWING NO.
FIELD BOOK NO. 150		2286-1



LEGEND

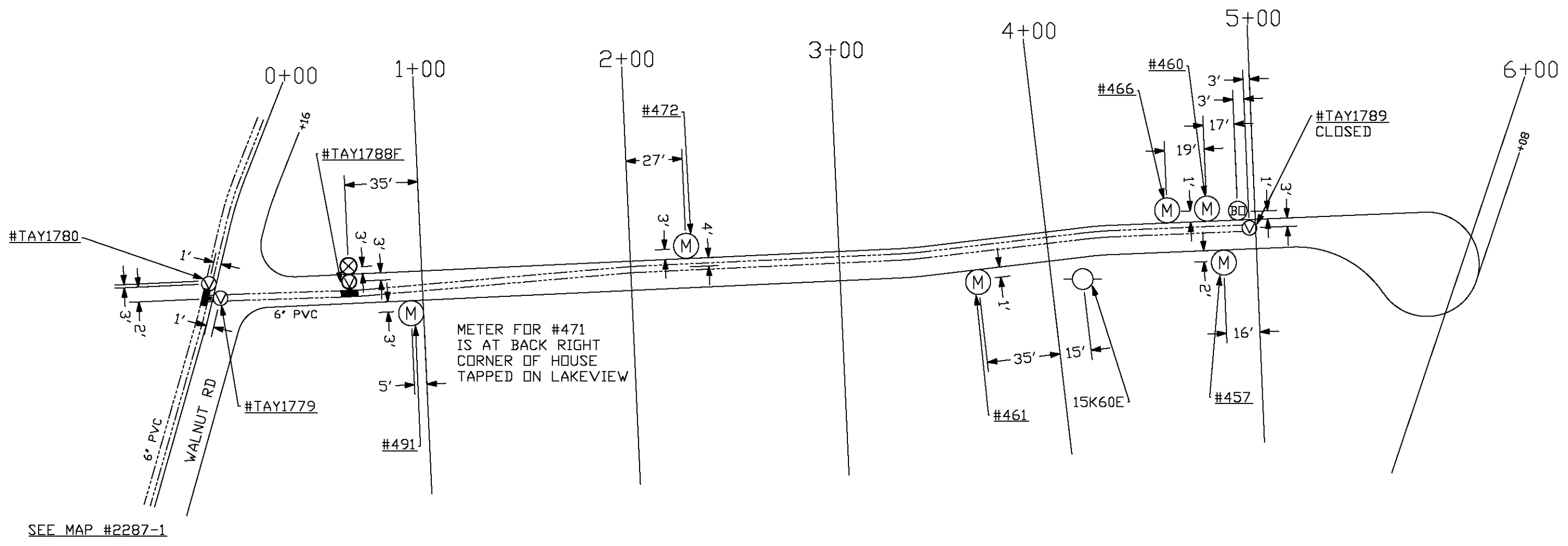
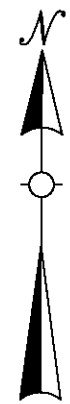
- ===== 4" WATER MAIN
- ===== 6" WATER MAIN
- ===== 8" WATER MAIN

- ⊗ = VALVE ⊗ = FIRE HYDRANT
- Ⓜ = METER ⊕ = METER INSIDE
- ⊗ = UTILITY POLE ⊙ = LAMP POST

Q-15

REC-675

NORTHERN KENTUCKY WATER DISTRICT LOCATION MAPS		
WALNUT ROAD		
DRAWN BY: SAR	REVISED DATE	SCALE: 1" = 50'
TRACED BY: SAR		DATE: 4-6-18
CHECKED BY: ADAM S		DRAWING NO.
FIELD BOOK NO. 150		2287-1



SEE MAP #2287-1

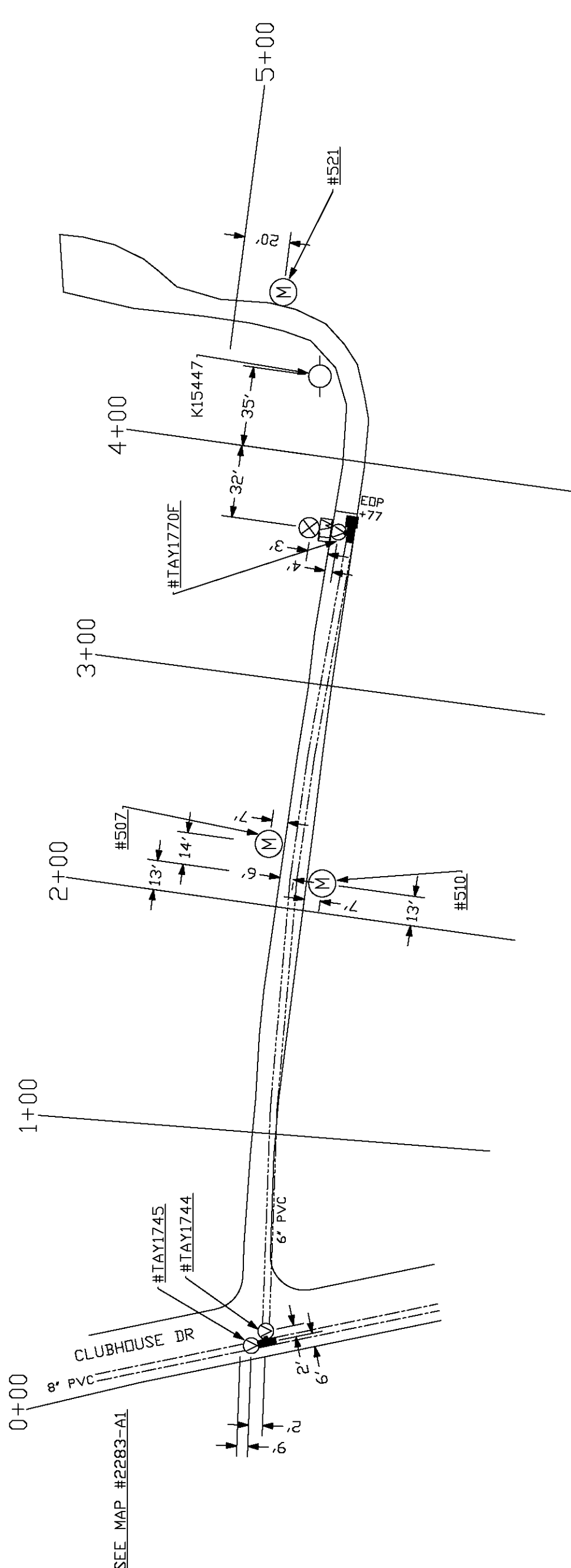
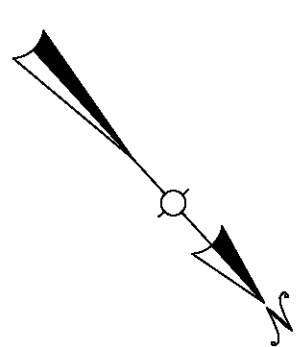
LEGEND

- ===== 4" WATER MAIN
- ===== 6" WATER MAIN
- ===== 8" WATER MAIN
- ⊗ = VALVE
- ⊗ = FIRE HYDRANT
- Ⓜ = METER
- Ⓜ = METER INSIDE
- = UTILITY POLE
- ⊙ = LAMP POST

NORTHERN KENTUCKY WATER DISTRICT LOCATION MAPS		HILLTOP ROAD	
DRAWN BY: SAR	TRACED BY: SAR	REVISED DATE:	SCALE: 1" = 50'
CHECKED BY: ADAM S			DATE: 4-6-18
FIELD BOOK NO. 150			DRAWING NO. 2288-1

Q-15

REC-675

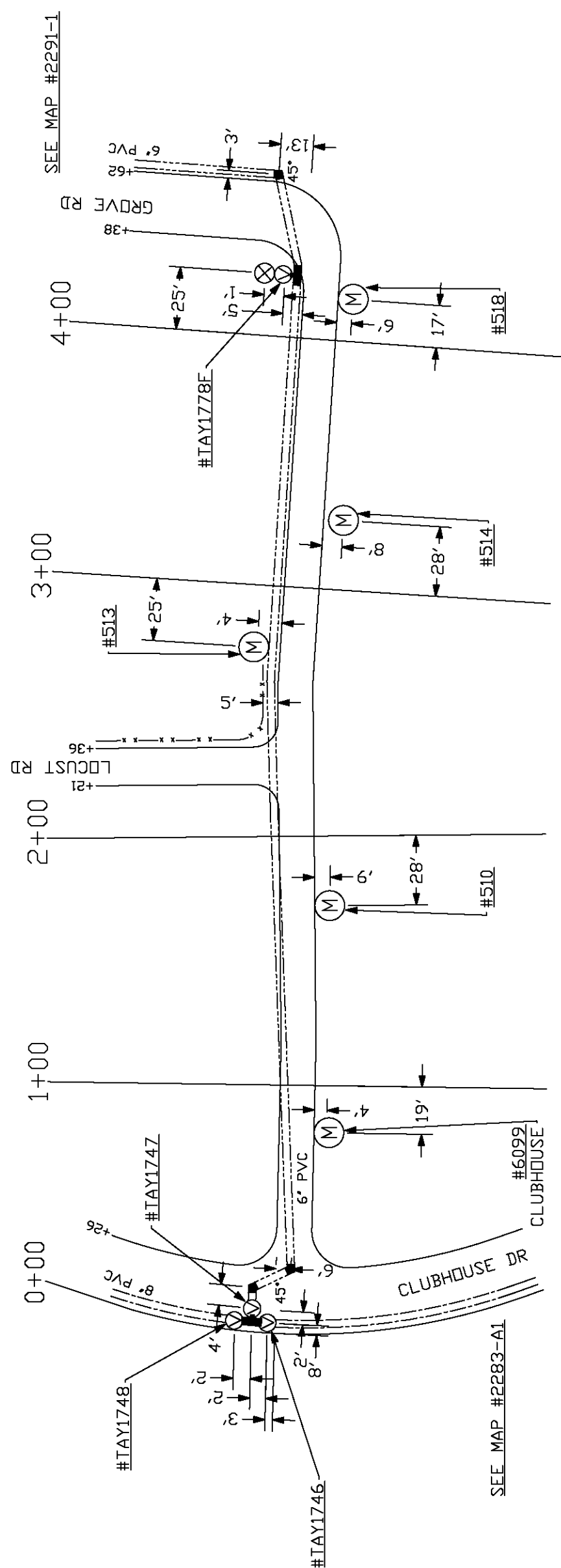
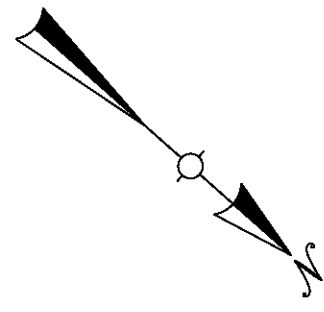


LEGEND

- ===== 4" WATER MAIN
- ===== 6" WATER MAIN
- ===== 8" WATER MAIN

- ⊕ = VALVE ⊗ = FIRE HYDRANT
- Ⓜ = METER ⊠ = METER INSIDE
- = UTILITY POLE ⊙ = LAMP POST

Q-15	REC-675	NORTHERN KENTUCKY WATER DISTRICT LOCATION MAPS	
BIRCH ROAD			
DRAWN BY: SAR	REVISED DATE	SCALE: 1" = 50'	
TRACED BY: SAR		DATE: 4-2-18	
CHECKED BY: ADAM S		DRAWING NO.	
FIELD BOOK NO. 150		2289-1	



LEGEND

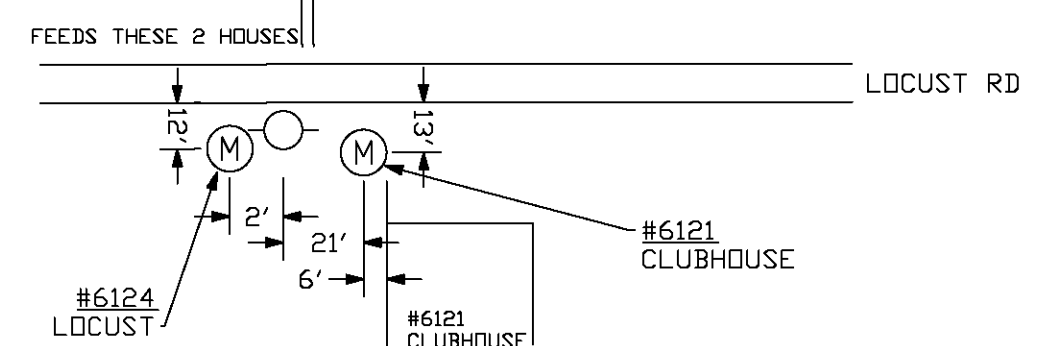
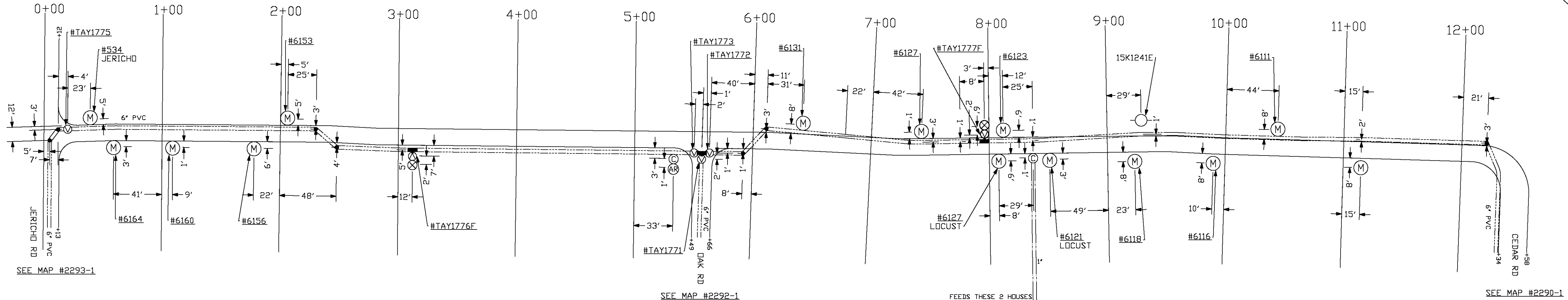
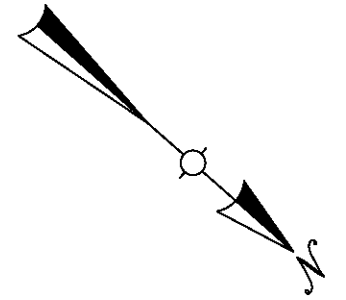
- ===== 4" WATER MAIN
- ===== 6" WATER MAIN
- ===== 8" WATER MAIN

- ⊕ = VALVE ⊗ = FIRE HYDRANT
- Ⓜ = METER ⊞ = METER INSIDE
- = UTILITY POLE ⊙ = LAMP POST

Q-15

REC-675

NORTHERN KENTUCKY WATER DISTRICT LOCATION MAPS		
CEDAR ROAD		
DRAWN BY: SAR	REVISED DATE	SCALE: 1" = 50'
TRACED BY: SAR		DATE: 4-5-18
CHECKED BY: ADAM S		DRAWING NO.
FIELD BOOK NO. 150		2290-1

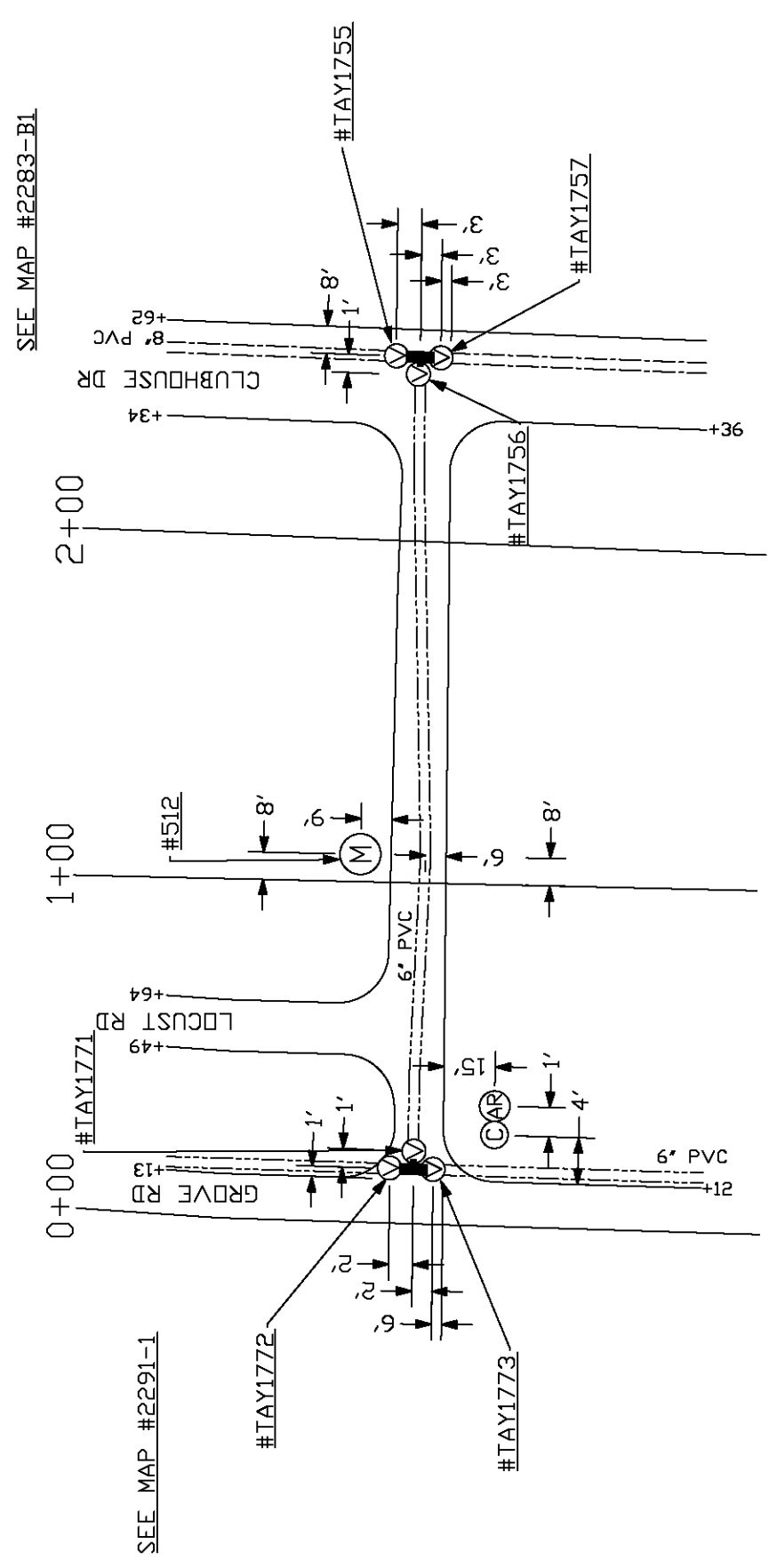
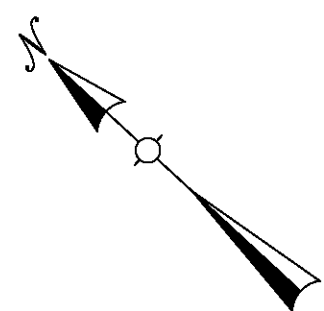


- LEGEND**
- ===== 4" WATER MAIN
 - ===== 6" WATER MAIN
 - ===== 8" WATER MAIN
 - ⊗ = VALVE
 - ⊗ = FIRE HYDRANT
 - ⊙ = METER
 - ⊙ = METER INSIDE
 - ⊙ = UTILITY POLE
 - ⊙ = LAMP POST

DRAWN BY: SAR		REVISED DATE	
TRACED BY: SAR			
CHECKED BY: ADAM S		SCALE: 1" = 50'	
FIELD BOOK NO. 150		DATE: 4-4-18	
		DRAWING NO. 2291-1	

NORTHERN KENTUCKY WATER DISTRICT
LOCATION MAPS
GROVE ROAD

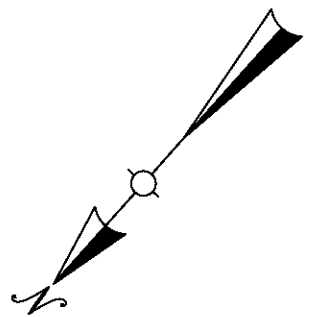
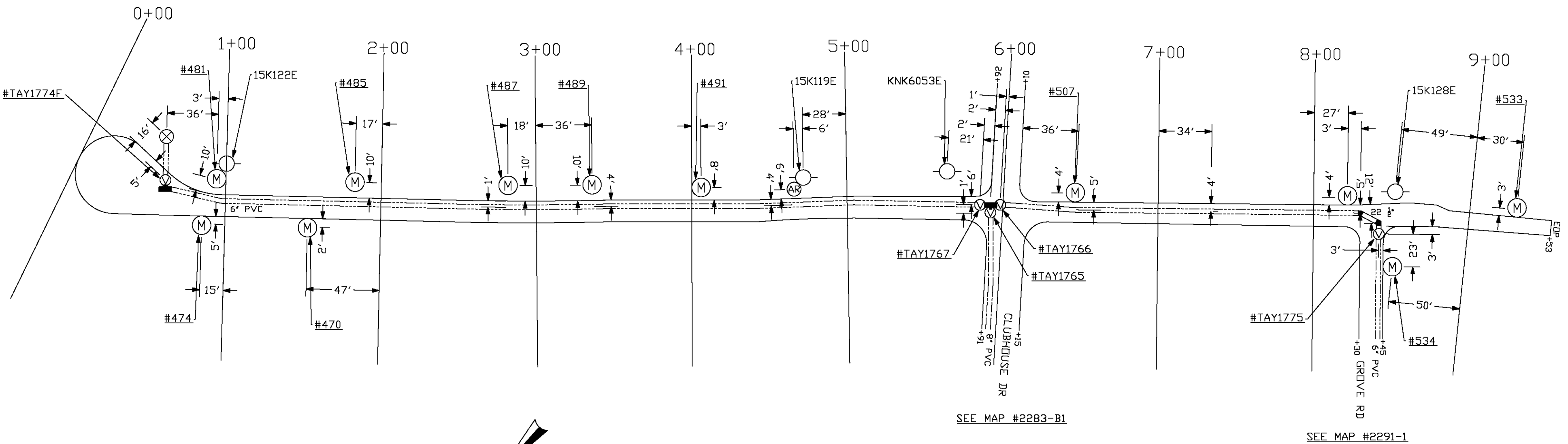
Q-15 REC-675



LEGEND

- ==== 4" WATER MAIN
- ==== 6" WATER MAIN
- ==== 8" WATER MAIN
- ⊙ = VALVE ⊗ = FIRE HYDRANT
- Ⓜ = METER ⊠ = METER INSIDE
- = UTILITY POLE ⊙ = LAMP POST

Q-15		REC-675	
NORTHERN KENTUCKY WATER DISTRICT LOCATION MAPS			
OAK ROAD			
DRAWN BY: SAR	REVISED DATE	SCALE: 1" = 50'	
TRACED BY: SAR		DATE: 4-3-18	
CHECKED BY: ADAM S		DRAWING NO.	
FIELD BOOK NO. 150		2292-1	



LEGEND

- ==== 4" WATER MAIN
- ==== 6" WATER MAIN
- ==== 8" WATER MAIN
- ⊗ = VALVE
- ⊗ = FIRE HYDRANT
- ⊙ = METER
- ⊙ = METER INSIDE
- ⊙ = METER
- ⊙ = UTILITY POLE
- ⊙ = LAMP POST

0-15		REC-675	
NORTHERN KENTUCKY WATER DISTRICT LOCATION MAPS			
JERICHO ROAD			
DRAWN BY: SAR	REvised DATE:	SCALE: 1" = 50'	
TRACED BY: SAR		DATE: 4-3-18	
CHECKED BY: ADAM S		DRAWING NO. 2293-1	
FIELD BOOK NO. 150			

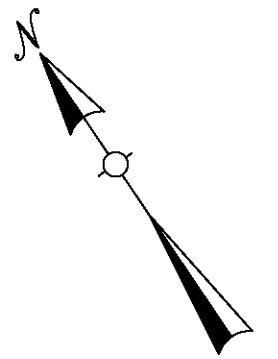
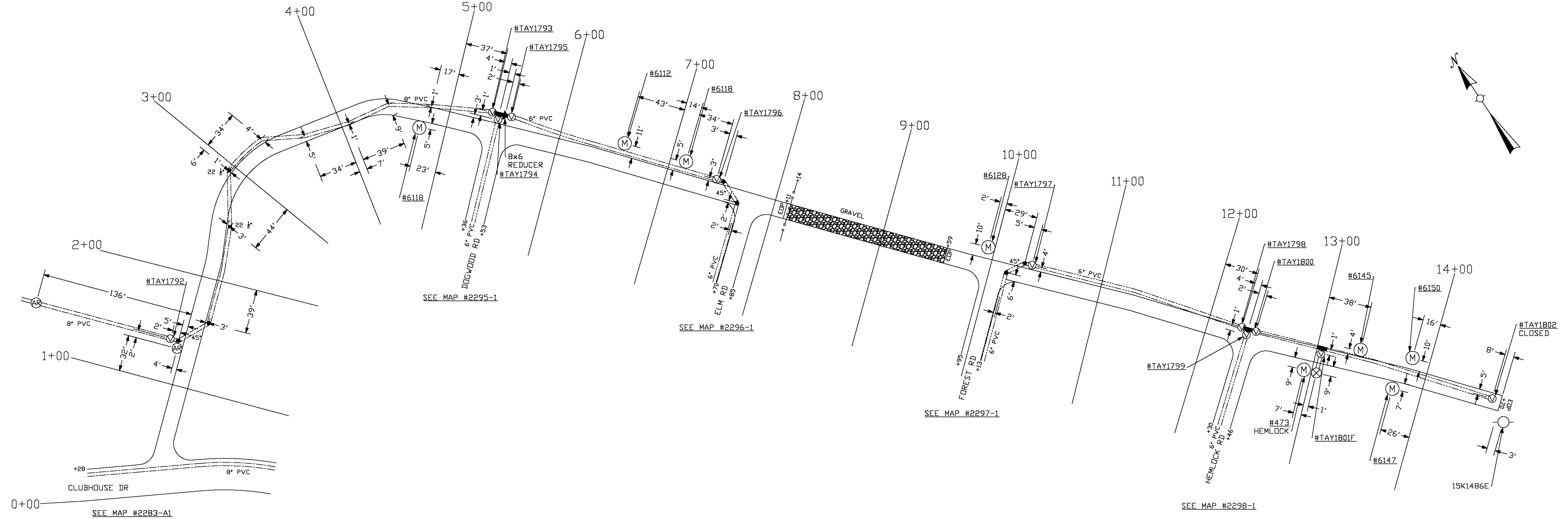
○ = VALVE ⊗ = FIRE HYDRANT
 ⊗ = METER ⊠ = METER INSIDE
 ○ = UTILITY POLE ⊙ = LAMP POST

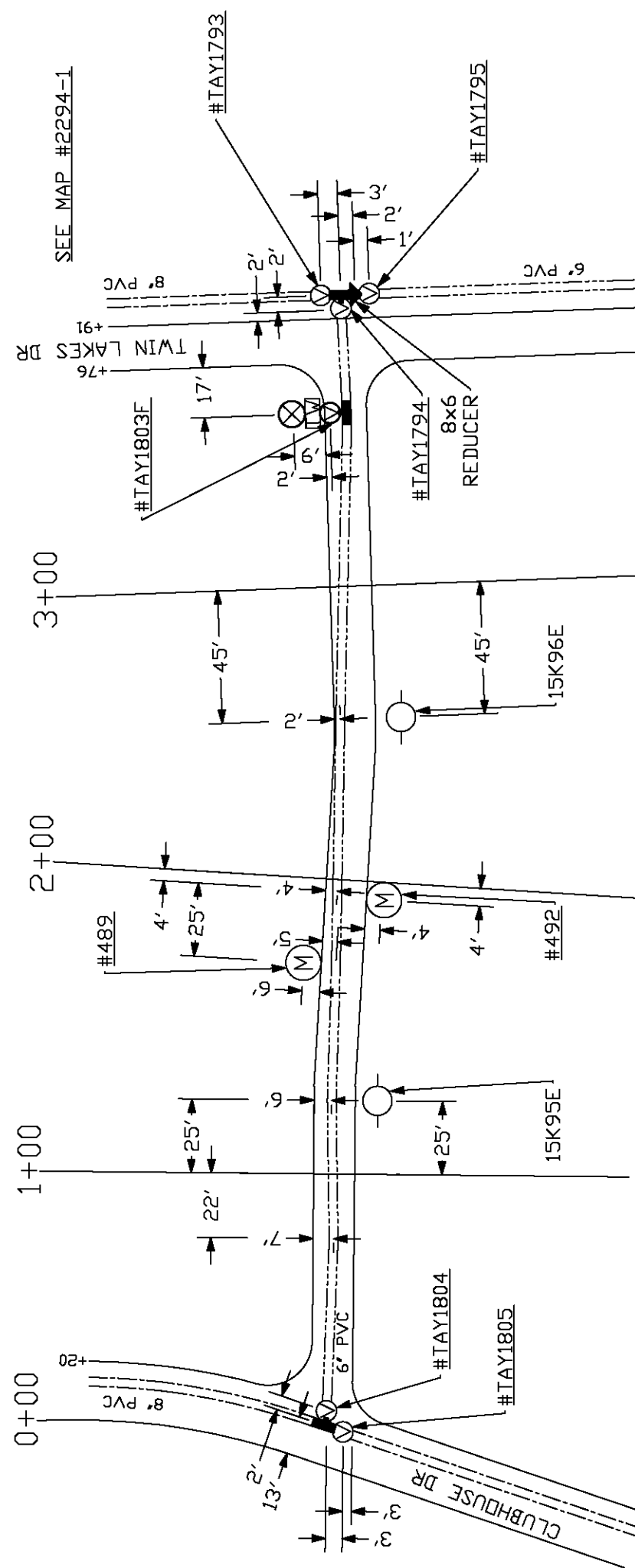
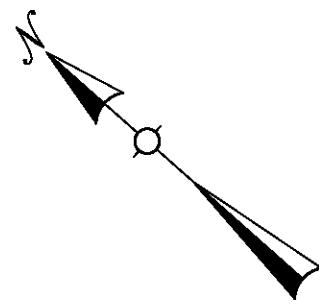
LEGEND
 ===== 4" WATER MAIN
 ===== 6" WATER MAIN
 ===== 8" WATER MAIN

DRAWN BY: SAR		REVISED DATE:	
TRACED BY: SAR		SCALE: 1" = 50'	
CHECKED BY: ADAM S		DATE: 4-10-18	
FIELD BOOK NO. 150		DRAWING NO. 2294-1	

TWINLAKES DRIVE
 NORTHERN KENTUCKY WATER DISTRICT
 LOCATION MAPS

Q-15 REC-675





SEE MAP #2294-1

SEE MAP #2283-A1

LEGEND

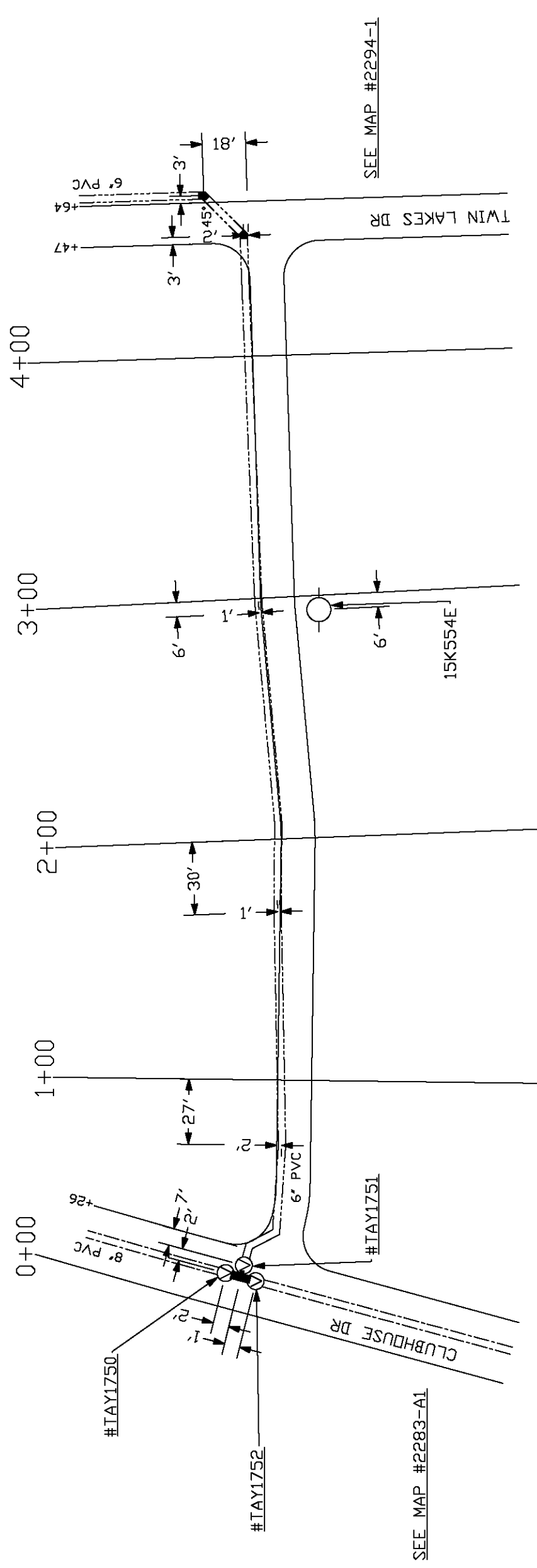
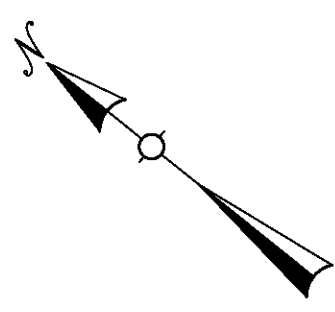
- ===== 4" WATER MAIN
- ===== 6" WATER MAIN
- ===== 8" WATER MAIN

- ⊙ = VALVE
- ⊗ = FIRE HYDRANT
- Ⓜ = METER
- Ⓜ = METER INSIDE
- = UTILITY POLE
- ⊙ = LAMP POST

Q-15

REC-675

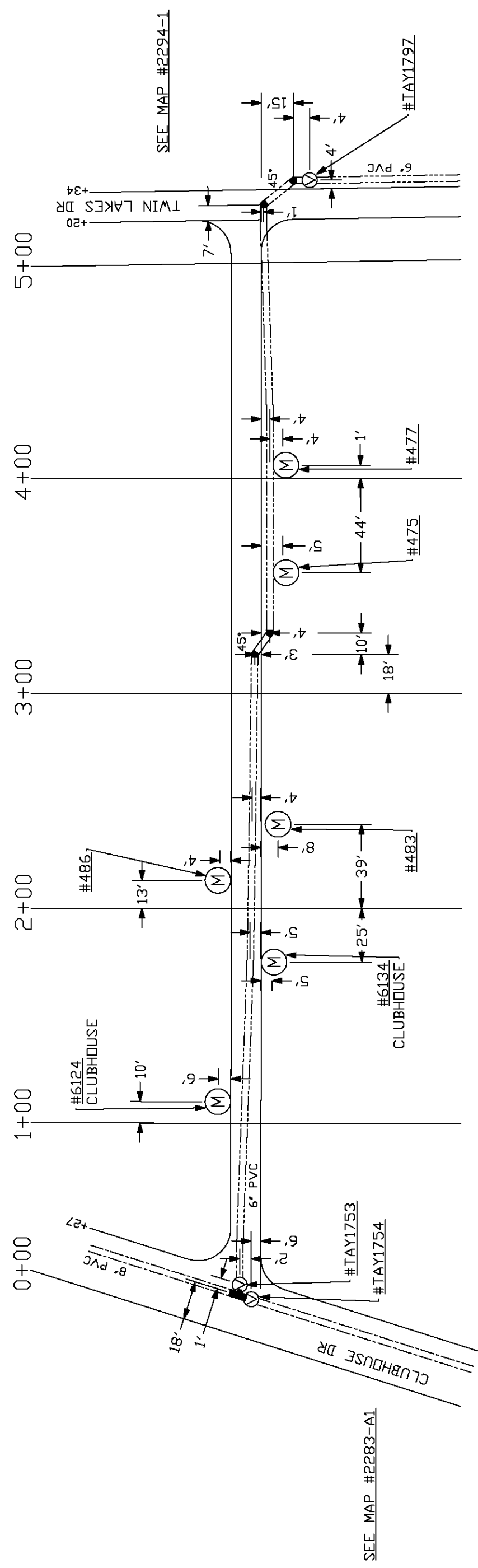
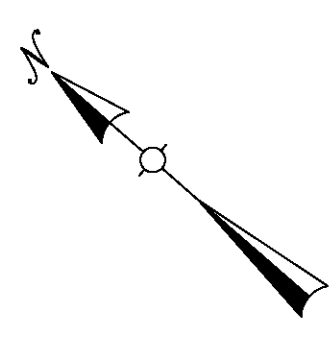
NORTHERN KENTUCKY WATER DISTRICT LOCATION MAPS		
DOGWOOD ROAD		
DRAWN BY: SAR	REVISED DATE	SCALE: 1" = 50'
TRACED BY: SAR		DATE: 4-11-18
CHECKED BY: ADAM S		DRAWING NO.
FIELD BOOK NO. 150		2295-1



LEGEND

- ===== 4" WATER MAIN
- ===== 6" WATER MAIN
- ===== 8" WATER MAIN
- ⊕ = VALVE ⊗ = FIRE HYDRANT
- Ⓜ = METER ⊠ = METER INSIDE
- = UTILITY POLE ⊙ = LAMP POST

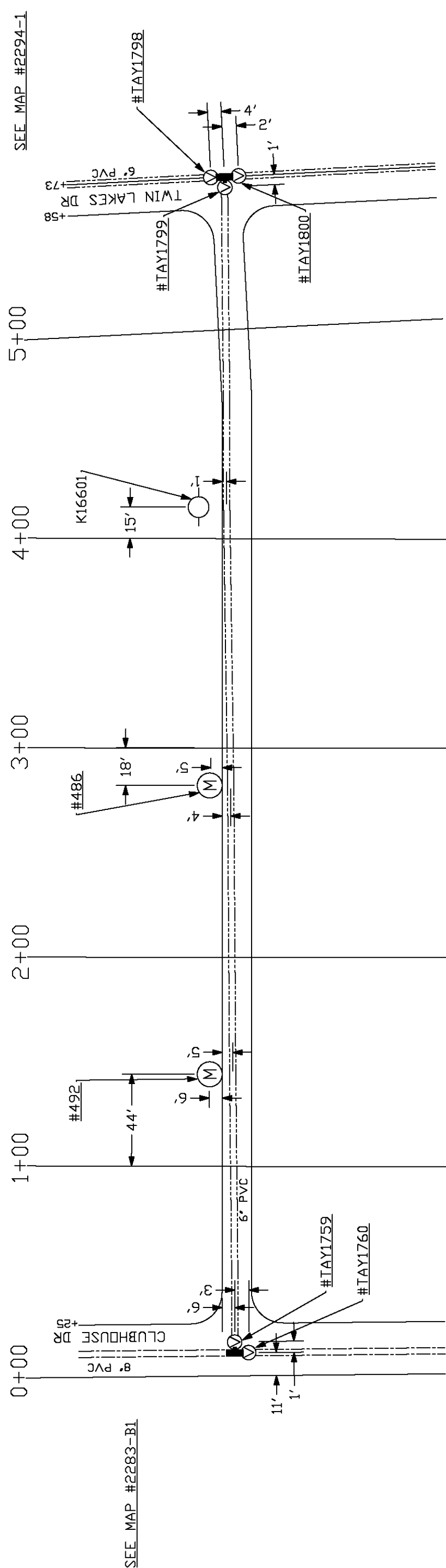
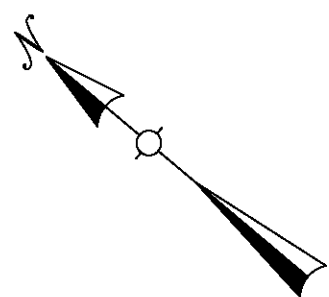
Q-15		REC-675	
NORTHERN KENTUCKY WATER DISTRICT LOCATION MAPS			
ELM ROAD			
DRAWN BY: SAR	REVISED DATE	SCALE: 1" = 50'	
TRACED BY: SAR		DATE: 4-10-18	
CHECKED BY: ADAM S		DRAWING NO.	
FIELD BOOK NO. 150		2296-1	



LEGEND

- ===== 4" WATER MAIN
- ===== 6" WATER MAIN
- ===== 8" WATER MAIN
- ⊗ = VALVE ⊗ = FIRE HYDRANT
- Ⓜ = METER ☒ = METER INSIDE
- = UTILITY POLE ● = LAMP POST

Q-15 REC-675	
NORTHERN KENTUCKY WATER DISTRICT LOCATION MAPS	
FOREST ROAD	
DRAWN BY: SAR	REVISED DATE
TRACED BY: SAR	SCALE: 1" = 50' DATE: 4-10-18
CHECKED BY: ADAM S	
FIELD BOOK NO. 150	DRAWING NO. 2297-1



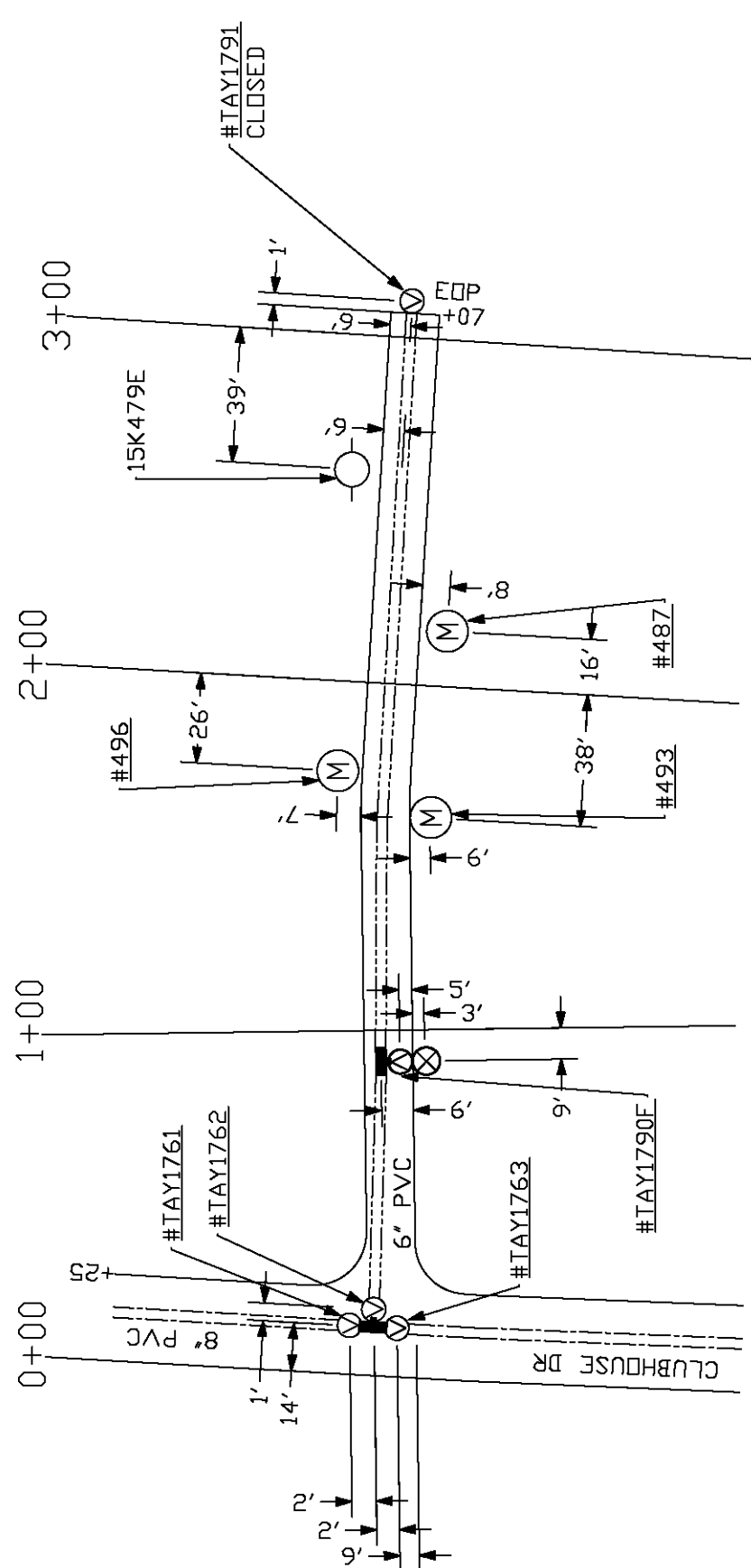
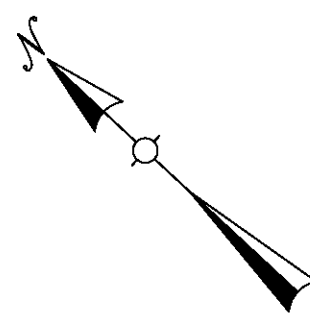
LEGEND

- ===== 4" WATER MAIN
- ===== 6" WATER MAIN
- ===== 8" WATER MAIN
- ⊕ = VALVE ⊗ = FIRE HYDRANT
- Ⓜ = METER ⊞ = METER INSIDE
- = UTILITY POLE ⊙ = LAMP POST

Q-15

REC-675

NORTHERN KENTUCKY WATER DISTRICT LOCATION MAPS		
HEMLOCK ROAD		
DRAWN BY: SAR	REVISED DATE	SCALE: 1" = 50'
TRACED BY: SAR		DATE: 4-9-18
CHECKED BY: ADAM S		DRAWING NO.
FIELD BOOK NO. 150		2298-1



SEE MAP #2283-B1

LEGEND

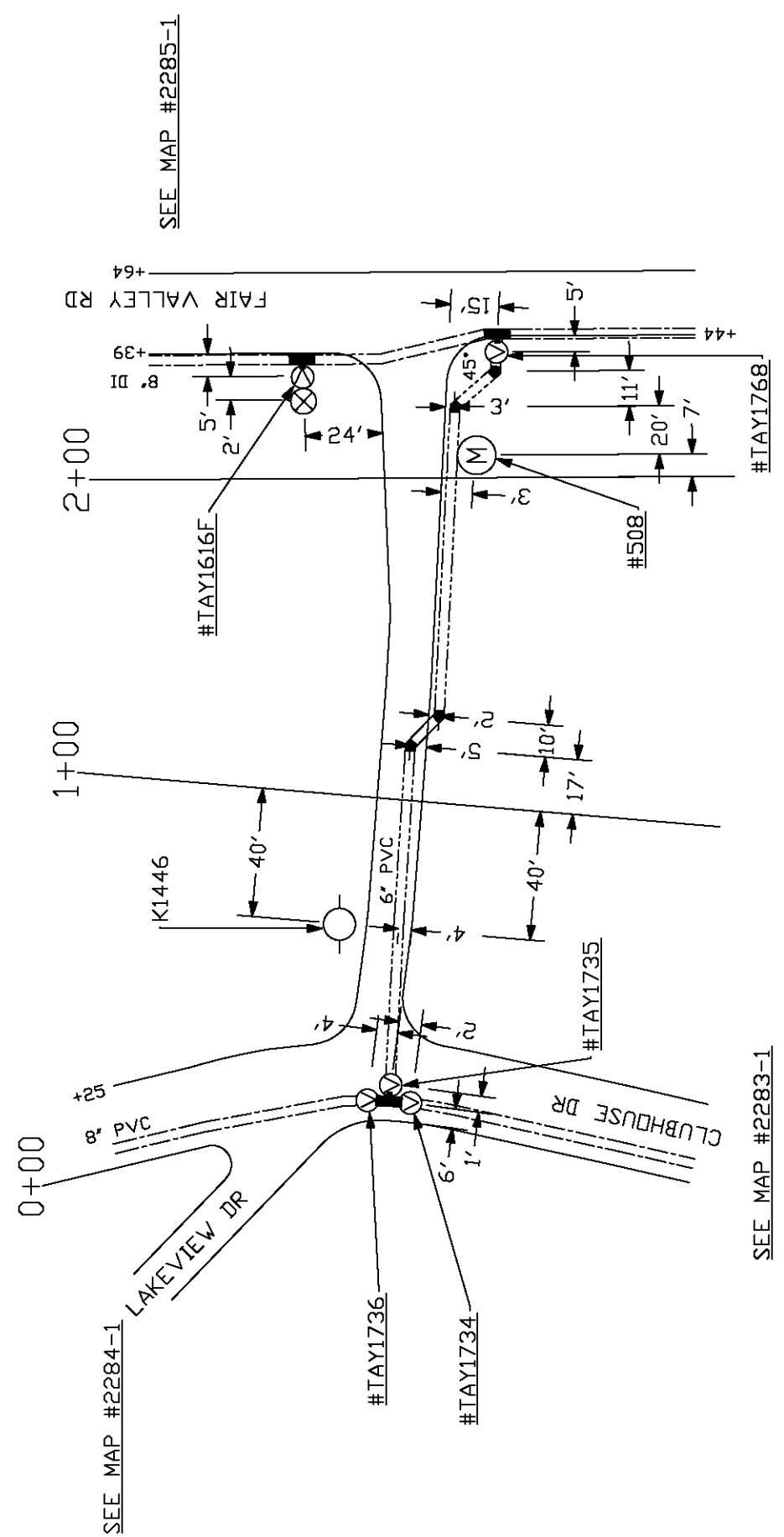
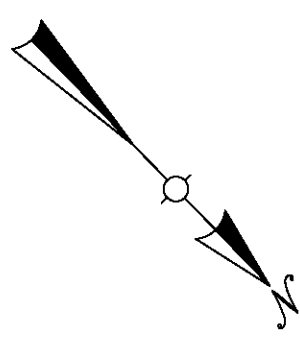
- ===== 4" WATER MAIN
- ===== 6" WATER MAIN
- ===== 8" WATER MAIN

- ⊕ = VALVE
- ⊗ = FIRE HYDRANT
- Ⓜ = METER
- Ⓜ = METER INSIDE
- = UTILITY POLE
- ⊙ = LAMP POST

Q-15

REC-675

NORTHERN KENTUCKY WATER DISTRICT LOCATION MAPS		
IRVING ROAD		
DRAWN BY: SAR	REVISED DATE	SCALE: 1" = 50'
TRACED BY: SAR		DATE: 4-6-18
CHECKED BY: ADAM S		DRAWING NO.
FIELD BOOK NO. 150		2299-1



LEGEND

- ===== 4" WATER MAIN
- ===== 6" WATER MAIN
- ===== 8" WATER MAIN

- ⊕ = VALVE ⊗ = FIRE HYDRANT
- Ⓜ = METER ⊠ = METER INSIDE
- = UTILITY POLE ⊙ = LAMP POST

Q-15

REC-675

NORTHERN KENTUCKY WATER DISTRICT LOCATION MAPS		
LAKESIDE DRIVE		
DRAWN BY: SAR	REVISED DATE	SCALE: 1" = 50'
TRACED BY: SAR		DATE: 4-2-18
CHECKED BY: ADAM S		DRAWING NO.
FIELD BOOK NO. 150		2387