



RECEIVED

MAR 2 2015

PUBLIC SERVICE
COMMISSION

2371 Irvine Road, Richmond, KY 40475

(TEL.) 859-623-0112 (FAX.) 859-626-0822

A MEASURE OF EXCELLENCE IN UTILITY PROFESSIONAL SERVICES

TO: Kentucky Public Service Commission

Attention: Joel Grugin

211 Sower Blvd

Frankfort, KY 40602

Case No. 2012-00362

December 31, 2014

The following documentation is being submitted by RussMar Utility Management, LLC. on behalf of the Tompkinsville Natural Gas System.

Documents Included:

1. Regulator Inspection Report- 2014
2. Cathodic Testing- Dec
3. Mechanical Fitting Failure Record
4. Odorometer Readings-
5. Patrolling- a. Business District
b. Outside Business District
5. Natural Gas Main & Service Installation Records- Dec
6. Visual Inspections of Mains & Service Pipelines- Dec
7. Main & Service Abandonment Report- Dec
8. Leak Repair-
9. Office Chart Clock- Oct-Dec



2371 Irvine Road, Richmond, KY 40475

(TEL.) 859-623-0112 (FAX.) 859-626-0822

A MEASURE OF EXCELLENCE IN UTILITY PROFESSIONAL SERVICES

*A hard copy of the above mentioned documents were mailed to the Kentucky Public Service Commission, Attention Joel Grugin on February 26, 2015 by Joe Orazen of RussMar Utility Management, LLC.

Sincerely,

A handwritten signature in blue ink, appearing to read "Joe Orazen". The signature is stylized and written over the printed name and phone number.

Joe Orazen
606-305-6436

COMMISSION

RECEIVED

MAR 2 2015

PUBLIC SERVICE
COMMISSION

**TOMPKINSVILLE GAS SYSTEM
REGULATOR INSPECTION REPORT
2014**

TOMPKINSVILLE GAS SYSTEM REGULATOR AND RELIEF VALVE INSPECTION REPORT

SYSTEM Tompkinsville LOCATION Sand Lick
 REGULATOR MANUFACTURER Fisher TYPE 630
 BODY SIZE 1" SERIAL NUMBER _____
 ORIFICE SIZE Unknown TYPE SEAT / SLEEVE Nitrile
 SPRING RANGE Unknown TYPE PILOT N/A

	<u>INLET</u>	<u>OUTLET</u>
PRESSURE AS FOUND	<u>235#</u>	<u>28#</u>
PRESSURE AS LEFT	<u>235#</u>	<u>28#</u>
TYPE INSPECTION	TEARDOWN _____	VISUAL & OPERATE <u>XXX</u>

RELIEF

RELIEF VALVE MANUFACTURER Fisher TYPE 630
 BODY SIZE 2" SERIAL NUMBER _____
 SPRING RANGE Unknown ORIFICE SIZE Unknown
 RELIEF VALVE SET POINT 48#
 INLET PIPING SIZE 2" VENT STACK SIZE 2"
 IS THERE A WEATHER CAP ON RELIEF STACK? YES _____ NO _____
 IS THERE A TEST POINT BETWEEN VALVE AND RELIEF? YES _____ NO _____
 WERE ALL PERTINENT VALVES CHECKED? YES _____ NO _____

COMMENTS: Visual and operate inspection performed.
Regulator operated and locked up okay.

DATE 12/14/2014 INSPECTED BY: Chris Coffey

TOMPKINSVILLE GAS SYSTEM REGULATOR AND RELIEF VALVE INSPECTION REPORT

SYSTEM Tompkinsville LOCATION Idrue Station 1st Cut
 REGULATOR MANUFACTURER Fisher TYPE EZR
 BODY SIZE 1" SERIAL NUMBER 16003944
 ORIFICE SIZE 30% capacity TYPE SEAT / SLEEVE Nitrile
 SPRING RANGE 130 - 200# TYPE PILOT 161EB

	<u>INLET</u>	<u>OUTLET</u>
PRESSURE AS FOUND	<u>235#</u>	<u>150#</u>
PRESSURE AS LEFT	<u>235#</u>	<u>150#</u>
TYPE INSPECTION	TEARDOWN <u> </u>	VISUAL & OPERATE <u>XXX</u>

RELIEF

RELIEF VALVE MANUFACTURER N/A TYPE N/A
 BODY SIZE N/A SERIAL NUMBER N/A
 SPRING RANGE N/A ORIFICE SIZE N/A
 RELIEF VALVE SET POINT N/A
 INLET PIPING SIZE N/A VENT STACK SIZE N/A
 IS THERE A WEATHER CAP ON RELIEF STACK? YES N/A NO N/A
 IS THERE A TEST POINT BETWEEN VALVE AND RELIEF? YES N/A NO N/A
 WERE ALL PERTINENT VALVES CHECKED? YES N/A NO N/A

COMMENTS: Regulator operated and locked up ok.

DATE 12/14/2014 INSPECTED BY: Chris Coffey

TOMPKINSVILLE GAS SYSTEM REGULATOR AND RELIEF VALVE INSPECTION REPORT

SYSTEM Tompkinsville LOCATION Idrue Station 2nd Cut
 REGULATOR MANUFACTURER Fisher TYPE EZR
 BODY SIZE 1" SERIAL NUMBER 16003946
 ORIFICE SIZE 60% capacity TYPE SEAT / SLEEVE Nitrile
 SPRING RANGE 30 - 75# TYPE PILOT 161EB

	<u>INLET</u>	<u>OUTLET</u>
PRESSURE AS FOUND	<u>150#</u>	<u>46#</u>
PRESSURE AS LEFT	<u>150#</u>	<u>46#</u>
TYPE INSPECTION	TEARDOWN <u> </u>	VISUAL & OPERATE <u>XXX</u>

RELIEF

RELIEF VALVE MANUFACTURER Fisher TYPE 1808
 BODY SIZE 2" SERIAL NUMBER 16003948
 SPRING RANGE 35 - 125# ORIFICE SIZE 2"
 RELIEF VALVE SET POINT 55#
 INLET PIPING SIZE 2" VENT STACK SIZE 2"
 IS THERE A WEATHER CAP ON RELIEF STACK? YES XXX NO
 IS THERE A TEST POINT BETWEEN VALVE AND RELIEF? YES XXX NO
 WERE ALL PERTINENT VALVES CHECKED? YES XXX NO

COMMENTS: Regulator operated and locked up ok.
Needle valve added to relief stack for test point

DATE 12/14/2014 INSPECTED BY: Chris Coffey

TOMPKINSVILLE GAS SYSTEM REGULATOR AND RELIEF VALVE INSPECTION REPORT

SYSTEM Tompkinsville LOCATION Green Hills Sta. 1st Cut
 REGULATOR MANUFACTURER Fisher TYPE EZR
 BODY SIZE 1" SERIAL NUMBER 16003945
 ORIFICE SIZE 30% capacity TYPE SEAT / SLEEVE Nitrile
 SPRING RANGE 130 - 200# TYPE PILOT 161EB

	<u>INLET</u>	<u>OUTLET</u>
PRESSURE AS FOUND	<u>235#</u>	<u>150#</u>
PRESSURE AS LEFT	<u>235#</u>	<u>150#</u>
TYPE INSPECTION	TEARDOWN <u> </u>	VISUAL & OPERATE <u>XXX</u>

RELIEF

RELIEF VALVE MANUFACTURER N/A TYPE N/A
 BODY SIZE N/A SERIAL NUMBER N/A
 SPRING RANGE N/A ORIFICE SIZE N/A
 RELIEF VALVE SET POINT N/A
 INLET PIPING SIZE N/A VENT STACK SIZE N/A
 IS THERE A WEATHER CAP ON RELIEF STACK? YES N/A NO N/A
 IS THERE A TEST POINT BETWEEN VALVE AND RELIEF? YES N/A NO N/A
 WERE ALL PERTINENT VALVES CHECKED? YES N/A NO N/A

COMMENTS: Regulator operated and locked up ok.

DATE 12/14/2014 INSPECTED BY: Chris Ciffert

TOMPKINSVILLE GAS SYSTEM REGULATOR AND RELIEF VALVE INSPECTION REPORT

SYSTEM Tompkinsville LOCATION Green Hills Station 2nd Cut
 REGULATOR MANUFACTURER Fisher TYPE EZR
 BODY SIZE 1" SERIAL NUMBER 16003947
 ORIFICE SIZE 60% capacity TYPE SEAT / SLEEVE Nitrile
 SPRING RANGE 30 - 75# TYPE PILOT 161EB

	<u>INLET</u>	<u>OUTLET</u>
PRESSURE AS FOUND	<u>150#</u>	<u>46#</u>
PRESSURE AS LEFT	<u>150#</u>	<u>46#</u>
TYPE INSPECTION	TEARDOWN <u> </u>	VISUAL & OPERATE <u>XXX</u>

RELIEF

RELIEF VALVE MANUFACTURER Fisher TYPE 1808
 BODY SIZE 2# SERIAL NUMBER 16003949
 SPRING RANGE 35 - 125# ORIFICE SIZE 2"
 RELIEF VALVE SET POINT 55#
 INLET PIPING SIZE 2" VENT STACK SIZE 2"
 IS THERE A WEATHER CAP ON RELIEF STACK? YES XXX NO
 IS THERE A TEST POINT BETWEEN VALVE AND RELIEF? YES XXX NO
 WERE ALL PERTINENT VALVES CHECKED? YES XXX NO

COMMENTS: Regulator operated and locked up ok.
Needle valve added to relief stack for test point

DATE 12/14/2014 INSPECTED BY: Chris Coffelt

TOMPKINSVILLE GAS SYSTEM REGULATOR AND RELIEF VALVE INSPECTION REPORT

SYSTEM Tompkinsville LOCATION Poplar Log Road Left Run - Monitor
 REGULATOR MANUFACTURER American Meter Co. TYPE Axial Flow
 BODY SIZE 2" SERIAL NUMBER 133815
 ORIFICE SIZE Full Cage TYPE SEAT / SLEEVE H7
 SPRING RANGE 25 - 150# TYPE PILOT ZSC 100

	<u>INLET</u>	<u>OUTLET</u>
PRESSURE AS FOUND	<u>235#</u>	<u>55#</u>
PRESSURE AS LEFT	<u>235#</u>	<u>55#</u>
TYPE INSPECTION	TEARDOWN <u>XXX</u>	VISUAL & OPERATE <u> </u>

RELIEF

RELIEF VALVE MANUFACTURER N/A TYPE N/A
 BODY SIZE N/A SERIAL NUMBER N/A
 SPRING RANGE N/A ORIFICE SIZE N/A
 RELIEF VALVE SET POINT N/A
 INLET PIPING SIZE N/A VENT STACK SIZE N/A
 IS THERE A WEATHER CAP ON RELIEF STACK? YES N/A NO N/A
 IS THERE A TEST POINT BETWEEN VALVE AND RELIEF? YES N/A NO N/A
 WERE ALL PERTINENT VALVES CHECKED? YES N/A NO N/A

COMMENTS: Regulator operated and locked up ok.

DATE 12/14/2014 INSPECTED BY: *Chris Coffey*

TOMPKINSVILLE GAS SYSTEM REGULATOR AND RELIEF VALVE INSPECTION REPORT

SYSTEM Tompkinsville LOCATION Poplar Log Road Left Run - Worker
 REGULATOR MANUFACTURER American Meter Co. TYPE Axial Flow
 BODY SIZE 2" SERIAL NUMBER 133816
 ORIFICE SIZE Full Cage TYPE SEAT / SLEEVE H7
 SPRING RANGE 25 - 150# TYPE PILOT ZSC 100

	<u>INLET</u>	<u>OUTLET</u>
PRESSURE AS FOUND	<u>235#</u>	<u>46#</u>
PRESSURE AS LEFT	<u>235#</u>	<u>45#</u>
TYPE INSPECTION	TEARDOWN <u>XXX</u>	VISUAL & OPERATE <u> </u>

RELIEF

RELIEF VALVE MANUFACTURER N/A TYPE N/A
 BODY SIZE N/A SERIAL NUMBER N/A
 SPRING RANGE N/A ORIFICE SIZE N/A
 RELIEF VALVE SET POINT N/A
 INLET PIPING SIZE N/A VENT STACK SIZE N/A
 IS THERE A WEATHER CAP ON RELIEF STACK? YES N/A NO N/A
 IS THERE A TEST POINT BETWEEN VALVE AND RELIEF? YES N/A NO N/A
 WERE ALL PERTINENT VALVES CHECKED? YES N/A NO N/A

COMMENTS: Regulator operated and locked up ok.

DATE 12/14/2014 INSPECTED BY: *Chris App*

TOMPKINSVILLE GAS SYSTEM REGULATOR AND RELIEF VALVE INSPECTION REPORT

SYSTEM Tompkinsville LOCATION City Gate Station - Right Run
 REGULATOR MANUFACTURER American Meter Co. TYPE Axial Flow
 BODY SIZE 2" SERIAL NUMBER tag missing
 ORIFICE SIZE Restricted to 50% capacity TYPE SEAT / SLEEVE H7
 SPRING RANGE 10 - 75# TYPE PILOT ZSC - 100

	<u>INLET</u>	<u>OUTLET</u>
PRESSURE AS FOUND	<u>235#</u>	<u>46#</u>
PRESSURE AS LEFT	<u>235#</u>	<u>45#</u>
TYPE INSPECTION	TEARDOWN <u> </u>	VISUAL & OPERATE <u>XXX</u>

RELIEF

RELIEF VALVE MANUFACTURER See left run inspection report TYPE
 BODY SIZE SERIAL NUMBER
 SPRING RANGE ORIFICE SIZE
 RELIEF VALVE SET POINT
 INLET PIPING SIZE VENT STACK SIZE
 IS THERE A WEATHER CAP ON RELIEF STACK? YES NO
 IS THERE A TEST POINT BETWEEN VALVE AND RELIEF? YES NO
 WERE ALL PERTINENT VALVES CHECKED? YES XXX NO

COMMENTS: Regulator operated and locked up ok.
Not able to tear down due to other lines tapped off

DATE 12/14/2014 INSPECTED BY: Chris Coffey

**TOMPKINSVILLE GAS SYSTEM
REGULATOR AND RELIEF VALVE INSPECTION REPORT**

SYSTEM Tompkinsville LOCATION City Gate Station - Left Run (gate side)
 REGULATOR MANUFACTURER American Meter Co. TYPE Axial Flow
 BODY SIZE 2" SERIAL NUMBER 32642
 ORIFICE SIZE Restricted to 40% capacity TYPE SEAT / SLEEVE B7
 SPRING RANGE 10 - 75# TYPE PILOT ZSC 100

	<u>INLET</u>	<u>OUTLET</u>
PRESSURE AS FOUND	<u>235#</u>	<u>47#</u>
PRESSURE AS LEFT	<u>235#</u>	<u>44#</u>
TYPE INSPECTION	TEARDOWN <u> </u>	VISUAL & OPERATE <u>XXX</u>

RELIEF

RELIEF VALVE MANUFACTURER American TYPE Axial Flow
 BODY SIZE 4" SERIAL NUMBER 144178
 SPRING RANGE 10 - 75# ORIFICE SIZE Full Cage
 RELIEF VALVE SET POINT 60#
 INLET PIPING SIZE 3" X 4" VENT STACK SIZE 4"
 IS THERE A WEATHER CAP ON RELIEF STACK? YES xxx NO
 IS THERE A TEST POINT BETWEEN VALVE AND RELIEF? YES xxx NO
 WERE ALL PERTINENT VALVES CHECKED? YES xxx NO

COMMENTS: Regulator operated and locked up ok.
Not able to tear down due to other lines tapped off

DATE 12/14/2014 INSPECTED BY: *Chris Offler*

TOMPKINSVILLE GAS SYSTEM REGULATOR AND RELIEF VALVE INSPECTION REPORT

SYSTEM Tompkinsville LOCATION Beside Scott's Rock Quarry - Left Run
 REGULATOR MANUFACTURER Mooney TYPE Flowgrid
 BODY SIZE 2" SERIAL NUMBER 6457
 ORIFICE SIZE Restricted 50% TYPE SEAT / SLEEVE 80 duro
 SPRING RANGE 10 - 70# TYPE PILOT Series 20

	<u>INLET</u>	<u>OUTLET</u>
PRESSURE AS FOUND	<u>235#</u>	<u>45#</u>
PRESSURE AS LEFT	<u>235#</u>	<u>46#</u>
TYPE INSPECTION	TEARDOWN <u>XXX</u>	VISUAL & OPERATE <u> </u>

RELIEF

RELIEF VALVE MANUFACTURER Mooney TYPE Flowgrid
 BODY SIZE 3" SERIAL NUMBER 7711
 SPRING RANGE 10 - 70# ORIFICE SIZE 100%
 RELIEF VALVE SET POINT 60#
 INLET PIPING SIZE 3" VENT STACK SIZE 3"
 IS THERE A WEATHER CAP ON RELIEF STACK? YES XXX NO
 IS THERE A TEST POINT BETWEEN VALVE AND RELIEF? YES XXX NO
 WERE ALL PERTINENT VALVES CHECKED? YES XXX NO

COMMENTS: Regulator operated and locked up ok.
Repaired leak on relief valve

DATE 12/14/2014 INSPECTED BY: *Chic Coffey*

TOMPKINSVILLE GAS SYSTEM REGULATOR AND RELIEF VALVE INSPECTION REPORT

SYSTEM Tompkinsville LOCATION Beside Scott's Rock Quarry - Right Run (gate side)
 REGULATOR MANUFACTURER Mooney TYPE Flowgrid
 BODY SIZE 2" SERIAL NUMBER _____
 ORIFICE SIZE Restricted to 50% TYPE SEAT / SLEEVE 80 duro
 SPRING RANGE 10 - 70# TYPE PILOT Series 20

	<u>INLET</u>	<u>OUTLET</u>
PRESSURE AS FOUND	<u>235#</u>	<u>46#</u>
PRESSURE AS LEFT	<u>235#</u>	<u>43#</u>
TYPE INSPECTION	TEARDOWN <u>XXX</u>	VISUAL & OPERATE _____

RELIEF

RELIEF VALVE MANUFACTURER see left run inspection report TYPE _____
 BODY SIZE _____ SERIAL NUMBER _____
 SPRING RANGE _____ ORIFICE SIZE _____
 RELIEF VALVE SET POINT _____
 INLET PIPING SIZE _____ VENT STACK SIZE _____
 IS THERE A WEATHER CAP ON RELIEF STACK? YES _____ NO _____
 IS THERE A TEST POINT BETWEEN VALVE AND RELIEF? YES _____ NO _____
 WERE ALL PERTINENT VALVES CHECKED? YES _____ NO _____

COMMENTS: Regulator operated and locked up ok.

DATE 12/14/2014

INSPECTED BY: *Chris Patten*

TOMPKINSVILLE GAS SYSTEM REGULATOR AND RELIEF VALVE INSPECTION REPORT

SYSTEM Tompkinsville LOCATION Q Dubree
 REGULATOR MANUFACTURER Fisher TYPE 621-101
 BODY SIZE 1" SERIAL NUMBER _____
 ORIFICE SIZE 1/8" TYPE SEAT / SLEEVE Nitrile
 SPRING RANGE 10-25 PSIG TYPE PILOT N/A

	<u>INLET</u>	<u>OUTLET</u>
PRESSURE AS FOUND	<u>235#</u>	<u>24#</u>
PRESSURE AS LEFT	<u>235#</u>	<u>24#</u>
TYPE INSPECTION	TEARDOWN _____	VISUAL & OPERATE <u>XXX</u>

RELIEF

RELIEF VALVE MANUFACTURER Fisher TYPE 1805
 BODY SIZE 1" SERIAL NUMBER _____
 SPRING RANGE Unknown ORIFICE SIZE Unknown
 RELIEF VALVE SET POINT Unknown
 INLET PIPING SIZE 1" VENT STACK SIZE 1"
 IS THERE A WEATHER CAP ON RELIEF STACK? YES _____ NO XXX
 IS THERE A TEST POINT BETWEEN VALVE AND RELIEF? YES _____ NO XXX
 WERE ALL PERTINENT VALVES CHECKED? YES XXX NO _____

COMMENTS: Visual and operate inspection performed.
No way to check relief setting no test point
No outlet valve on station

DATE 12/14/2014

INSPECTED BY: 

TOMPKINSVILLE GAS SYSTEM REGULATOR AND RELIEF VALVE INSPECTION REPORT

SYSTEM Tompkinsville LOCATION Poplar Log Road Right Run - Worker
 REGULATOR MANUFACTURER American Meter Co. TYPE Axial Flow
 BODY SIZE 2" SERIAL NUMBER 133813
 ORIFICE SIZE Full Cage TYPE SEAT / SLEEVE H7
 SPRING RANGE 25 - 150# TYPE PILOT ZSC 100

	<u>INLET</u>	<u>OUTLET</u>
PRESSURE AS FOUND	<u>235#</u>	<u>48#</u>
PRESSURE AS LEFT	<u>235#</u>	<u>46#</u>
TYPE INSPECTION	TEARDOWN <u>XXX</u>	VISUAL & OPERATE <u> </u>

RELIEF

RELIEF VALVE MANUFACTURER N/A TYPE N/A
 BODY SIZE N/A SERIAL NUMBER N/A
 SPRING RANGE N/A ORIFICE SIZE N/A
 RELIEF VALVE SET POINT N/A
 INLET PIPING SIZE N/A VENT STACK SIZE N/A
 IS THERE A WEATHER CAP ON RELIEF STACK? YES N/A NO N/A
 IS THERE A TEST POINT BETWEEN VALVE AND RELIEF? YES N/A NO N/A
 WERE ALL PERTINENT VALVES CHECKED? YES N/A NO N/A

COMMENTS: Regulator operated and locked up ok.

DATE 12/14/2014 INSPECTED BY: *Chris Coffey*

TOMPKINSVILLE GAS SYSTEM REGULATOR AND RELIEF VALVE INSPECTION REPORT

SYSTEM Tompkinsville LOCATION Poplar Log Road Right Run - Monitor
 REGULATOR MANUFACTURER American Meter Co. TYPE Axial Flow
 BODY SIZE 2" SERIAL NUMBER 133814
 ORIFICE SIZE Full Cage TYPE SEAT / SLEEVE H7
 SPRING RANGE 25 - 150# TYPE PILOT ZSC 100

	<u>INLET</u>	<u>OUTLET</u>
PRESSURE AS FOUND	<u>235#</u>	<u>55#</u>
PRESSURE AS LEFT	<u>235#</u>	<u>55#</u>
TYPE INSPECTION	TEARDOWN <u>XXX</u>	VISUAL & OPERATE <u> </u>

RELIEF

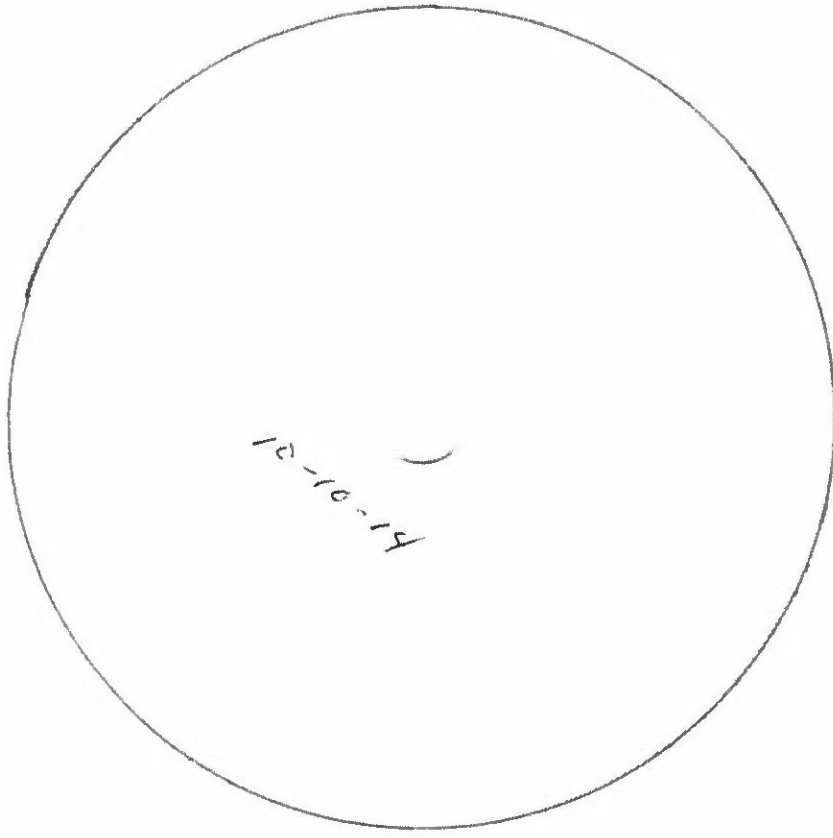
RELIEF VALVE MANUFACTURER N/A TYPE N/A
 BODY SIZE N/A SERIAL NUMBER N/A
 SPRING RANGE N/A ORIFICE SIZE N/A
 RELIEF VALVE SET POINT N/A
 INLET PIPING SIZE N/A VENT STACK SIZE N/A
 IS THERE A WEATHER CAP ON RELIEF STACK? YES N/A NO N/A
 IS THERE A TEST POINT BETWEEN VALVE AND RELIEF? YES N/A NO N/A
 WERE ALL PERTINENT VALVES CHECKED? YES N/A NO N/A

COMMENTS: Regulator operated and locked up ok.

DATE 12/14/2014 INSPECTED BY: *Chris Hoff*

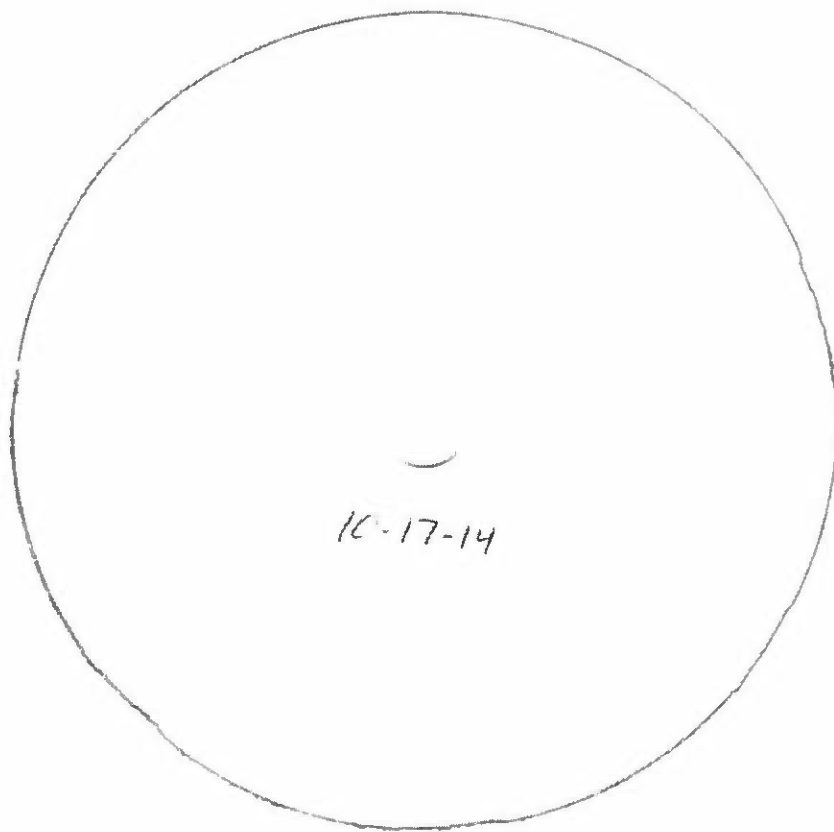
PUBLIC S
RECEIVED COMMIS

MAR 2 2015



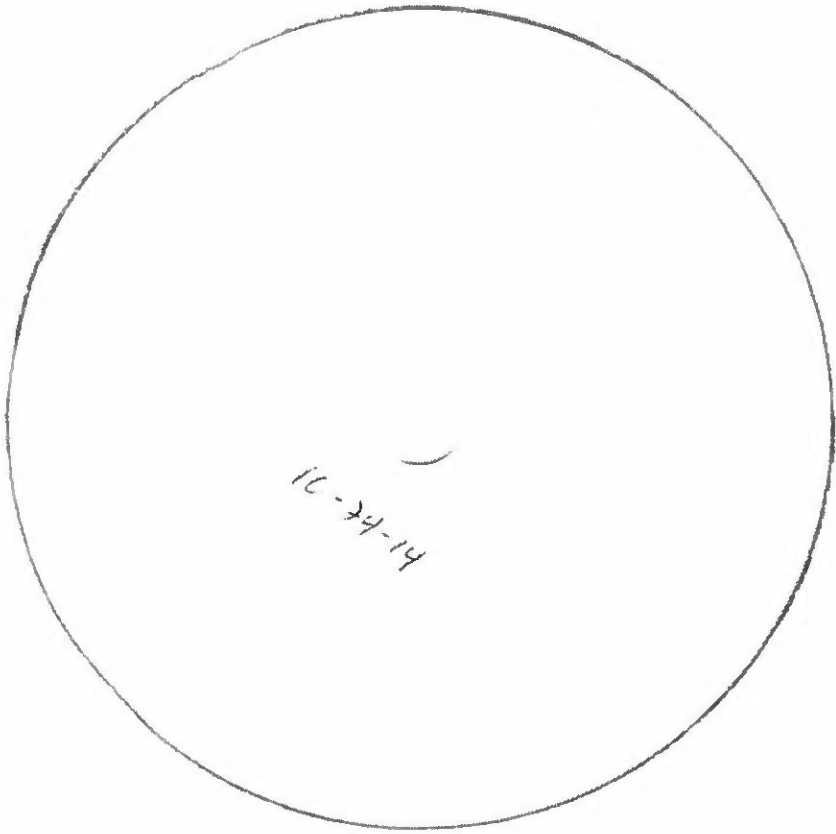
10-10-14

City of Tompkinsville
office chart clock.



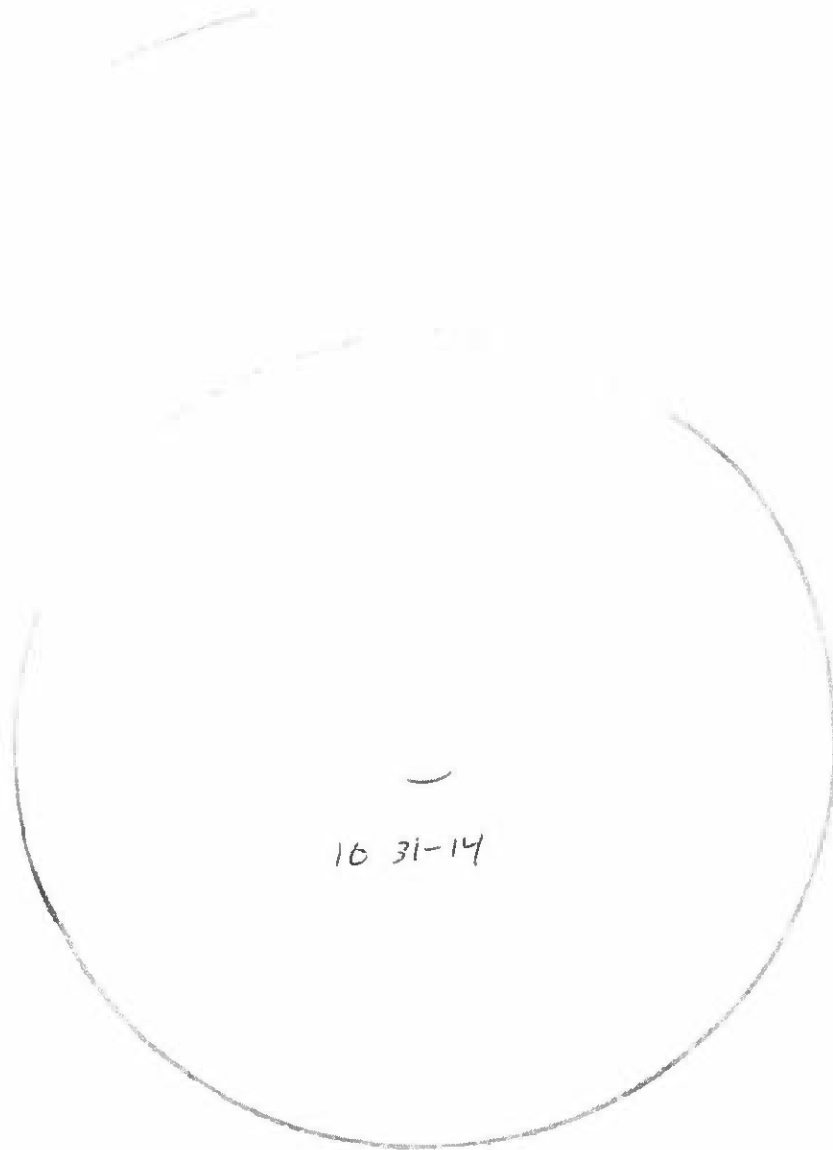
10-17-14

City of Tompkinsville
Office Chart.



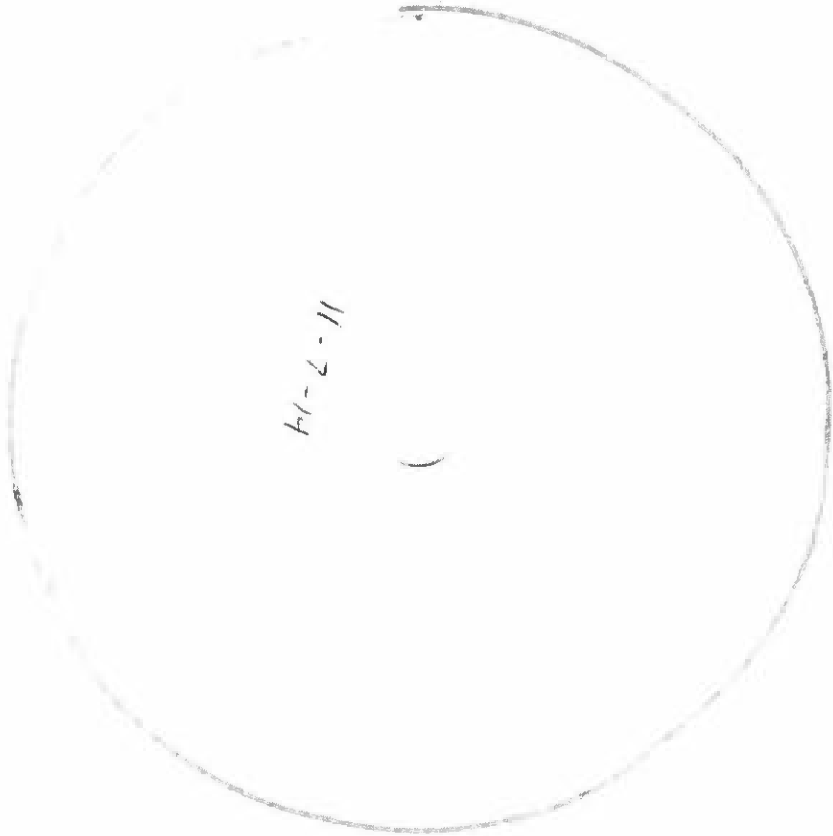
10-24-14

City of Tomkinsville
Office Chart



10 31-14

City of Tompkinsville
Office Chart Clock



City of Templeville
Office Chart

hl-hl-ll

—

C. J. + P. Thompson
- from chart + check
Irk went at 11-17-12 checked each chart.

11-24-11

(

City of Tempeville
Office
Chart.

12-3-14

Tompkinsville office
Chart Clock

10-10-10

(

City of Templeville
Office Chart Clerk

4196-11
)

City of Memphis
Office of the Clerk

Cathodic Testing

Station Test Points	January	February	March	April	May	June	July	August	September	October	November	December
2" Green Hills												-1.213
3" Green Hills												-1.214
2" Inlet Idru												-1.148
3" Outlet Idru												-1.144
2" Rocky Query												-1.139
3" Rocky Query												-1.134
Town Border												
3" East Inlet												-1.132
Poplar Log Inlet												-1.356
Poplar Log Outlet												-1.351
Sandlick												
Red Line												-1.080

ED

PATROLLING DISTRIBUTION SYSTEM			
Patrol Starting Date		Patrol Ending Date	
Mapping Section	SAND LICK AREA	Block Map Section	
VISUAL OBSERVATION INSPECTION			
Leakage Indicated (location and indication: vegetation, asphalt, concrete, excavation, erosion, tampering, damage)			
NONE Found			
Condition at highway, major thoroughfare, secondary road, railroad crossings, right-of-ways.			
Good To Fair			
Other extenuating circumstances that may affect the present and continued safety and integrity of the pipeline facility.			
Corrosion checks ARE made monthly			
Follow-up maintenances, repairs, preventative measures, testing, and precautionary actions.			
Daily checks of Regulator stations and Line Pressure			
Atmospheric corrosion survey, involving localized and general corrosion. Corrosion at the riser where it exits the ground. Checks for the effects of lightening and stray current as well chemical/bacteria electrolytes.			
NONE Found			
Number of qualified employees patrolling 7 (1-10)		1	
Signature Patrolling Personnel	<i>Man Johnson</i>	Date of This Report	6-25-14
Signature Patrolling Personnel		Date of This Report	
Signature Patrolling Personnel		Date of This Report	
Signature Patrolling Personnel		Date of This Report	

PATROLLING DISTRIBUTION SYSTEM			
Patrol Starting Date	10-6-14	Patrol Ending Date	10-9-14
Mapping Section	Edmonton Rd	Block Map Section	
VISUAL OBSERVATION INSPECTION			
Leakage Indicated (location and indication: vegetation, asphalt, concrete, excavation, erosion, tampering, damage)			
Strong odor of gas at intersection of E. Hume Rd + Edmonton Rd. Found a fitting in ground on the 3" ^{DE} main leaking. Tightened fitting to repair the leak.			
Condition at highway, major thoroughfare, secondary road, railroad crossings, right-of-ways.			
Good.			
Other extenuating circumstances that may affect the present and continued safety and integrity of the pipeline facility.			
Follow-up maintenances, repairs, preventative measures, testing, and precautionary actions.			
Rewalked the area on E. Hume Rd to ensure no more leaks in the area.			
Atmospheric corrosion survey, involving localized and general corrosion. Corrosion at the riser where it exits the ground. Checks for the effects of lightening and stray current as well chemical/bacteria electrolytes.			
Number of qualified employees patrolling ? (1-10)		1	
Signature Patrolling Personnel	<i>Jason Wane</i>	Date of This Report	10-10-14
Signature Patrolling Personnel		Date of This Report	
Signature Patrolling Personnel		Date of This Report	
Signature Patrolling Personnel		Date of This Report	

PATROLLING DISTRIBUTION SYSTEM			
Patrol Starting Date		Patrol Ending Date	
Mapping Section	Hwy 1103	Block Map Section	
VISUAL OBSERVATION INSPECTION			
Leakage Indicated (location and indication: vegetation, asphalt, concrete, excavation, erosion, tampering, damage)			
NONE Found			
Condition at highway, major thoroughfare, secondary road, railroad crossings, right-of-ways.			
All Good			
Other extenuating circumstances that may affect the present and continued safety and integrity of the pipeline facility.			
REPLACE NEW MARKER POST FOR GAS MAIN			
Follow-up maintenances, repairs, preventative measures, testing, and precautionary actions.			
NONE			
Atmospheric corrosion survey, involving localized and general corrosion. Corrosion at the riser where it exits the ground. Checks for the effects of lightning and stray current as well chemical/bacteria electrolytes.			
MAIN LINE IS PE AND NO CORROSION FOUND ON RISER THAT WAS CHECK			
Number of qualified employees patrolling ? (1-10)		1	
Signature Patrolling Personnel	<i>Mans...</i>	Date of This Report	6-9-14
Signature Patrolling Personnel		Date of This Report	
Signature Patrolling Personnel		Date of This Report	
Signature Patrolling Personnel		Date of This Report	

PATROLLING DISTRIBUTION SYSTEM			
Patrol Starting Date	3-10-14	Patrol Ending Date	3-11-14
Mapping Section	BUSINESS	Block Map Section	
VISUAL OBSERVATION INSPECTION			
Leakage Indicated (location and indication: vegetation, asphalt, concrete, excavation, erosion, tampering, damage)			
NO SIGN'S OF POSSIBLE LEAK'S WERE FOUND			
Condition at highway, major thoroughfare, secondary road, railroad crossings, right-of-ways.			
GOOD TO FAIR			
Other extenuating circumstances that may affect the present and continued safety and integrity of the pipeline facility.			
REPLACE A FEW MARKER POST'S			
Follow-up maintenances, repairs, preventative measures, testing, and precautionary actions.			
NONE			
Atmospheric corrosion survey, involving localized and general corrosion. Corrosion at the riser where it exits the ground. Checks for the effects of lightening and stray current as well chemical/bacteria electrolytes.			
MOST METERS SET HAVE BEEN PAINTED WILL FINISH PAINTING THE REST OF THEM SOON			
Number of qualified employees patrolling ? (1-10)			
Signature Patrolling Personnel	<i>[Signature]</i>	Date of This Report	3-11-14
Signature Patrolling Personnel		Date of This Report	
Signature Patrolling Personnel		Date of This Report	
Signature Patrolling Personnel		Date of This Report	

PATROLLING DISTRIBUTION SYSTEM			
Patrol Starting Date	6-2-14	Patrol Ending Date	6-9-14
Mapping Section	Hwy 163/Business	Block Map Section	
VISUAL OBSERVATION INSPECTION			
Leakage Indicated (location and indication: vegetation, asphalt, concrete, excavation, erosion, tampering, damage)			
NONE Found			
Condition at highway, major thoroughfare, secondary road, railroad crossings, right-of-ways.			
All Good			
Other extenuating circumstances that may affect the present and continued safety and integrity of the pipeline facility.			
REPLACE NEW MARKER POST FOR GAS MAIN			
Follow-up maintenances, repairs, preventative measures, testing, and precautionary actions.			
NONE			
Atmospheric corrosion survey, involving localized and general corrosion. Corrosion at the riser where it exits the ground. Checks for the effects of lightening and stray current as well chemical/bacteria electrolytes.			
MAIN LINE IS PE AND NO CORROSION FOUND ON RISER THAT WAS CHECK			
Number of qualified employees patrolling ? (1-10)		1	
Signature Patrolling Personnel	<i>Mark Adams</i>	Date of This Report	6-9-14
Signature Patrolling Personnel		Date of This Report	
Signature Patrolling Personnel		Date of This Report	
Signature Patrolling Personnel		Date of This Report	

Russmar / City of T-ville
COMPANY

INSPECTION DATE (MM/DD/YY) 12-4-14

INDICATE TYPE OF INSPECTION: Annual MAINT. NEW G/B WORK

DIV. AREA/DIST. SERIAL NUMBER: 053956 UNIT NO.

M.P./LOCATION: FIRE DEPT DC RATING: VOLTS / AMPS 60/10 TAP SETTINGS: COARSE 2/3 FINE 3/6

COMMON NAME: MANUFACTURER Universal

KWH SHIELD SHUNT VALUE (MV/AMPS) 50/10 LOWER LIMIT INDICATE TYPE OF STACK (SELENIUM OR DIODE) Diode

CALIBRATE METERS LAST		USE EXTERNAL METER FOR INSPECTION			TAKE P/B OVER P/L WITH SEPARATE TEST LEAD	
	VOLTMETER	AMMETER	PIPE-TO-SOIL	ROD-TO-SOIL	P/B AND POLARITY AT NEAREST TESTPOINT	
ON	<u>38.0</u>	<u>3.52</u>	<u>-1.146</u>	<u>1.841</u>	START	<u>11.46</u>
OFF	<u>2.1</u>	<u>0</u>	<u>-.734</u>	<u>1.004</u>	FINISH	
ON W/ NEG. GROUNDED	<u>38.0</u>	<u>3.44</u>	<u>-.960</u>	<u>2368</u>	AC/DC VOLTS - CASE TO SOIL	
					AC	<u>1</u> DC <u>1861</u>

INSPECT THE FOLLOWING ITEMS OK = NO PROBLEM, X = PROBLEMS AND EXPLAIN IN REMARKS, N/A = NOT APPLICABLE

RECTIFIER ITEMS				OVERHEAD/UNDERGROUND LINE INSPECTION	
<input checked="" type="checkbox"/> POLE AC BREAKER AND BOX	<input checked="" type="checkbox"/> RECORD PAD	<input checked="" type="checkbox"/> RECTIFIER POWER BREAKER	<input checked="" type="checkbox"/> TAP LUGS TIGHT	<input checked="" type="checkbox"/> OVERHEATED PLATES	<input checked="" type="checkbox"/> BRUNT CONDITION
<input checked="" type="checkbox"/> CASE GROUND CONNECTION	<input checked="" type="checkbox"/> GROUND ROD CONNECTION	<input checked="" type="checkbox"/> STACK CONDITION	<input checked="" type="checkbox"/> RMU CALIBRATED	<input checked="" type="checkbox"/> AIR CIRCULATION	<input checked="" type="checkbox"/> TRANSFORMER / CHOKES ISOLATED?
<input checked="" type="checkbox"/> AC CONDUIT & FITTINGS CONDITION	<input checked="" type="checkbox"/> METER CONDITION	<input checked="" type="checkbox"/> WIRE INSULATION CONDITION	<input checked="" type="checkbox"/> CONDITION OF PANELS	<input checked="" type="checkbox"/> OIL COOLED UNIT OIL LEVEL/LEAKS	<input checked="" type="checkbox"/> RECTIFIER CASE CONDITION
<input checked="" type="checkbox"/> BURGE OR LIGHTNING SUPPRESSOR OK?	<input checked="" type="checkbox"/> OUTLET PROPERLY GROUNDED	<input checked="" type="checkbox"/> CONDITION OF POLES (B) / POST	<input checked="" type="checkbox"/> PROPER SLACK	<input checked="" type="checkbox"/> TREE LIMBS ON POLE LINE	<input checked="" type="checkbox"/> DRUMS ALONG O&B LINE
<input checked="" type="checkbox"/> BROKEN INSULATORS	<input checked="" type="checkbox"/> LEAD CONNECTIONS TIGHT	<input checked="" type="checkbox"/> LEADS STAPLED TO POLES / POST	<input checked="" type="checkbox"/> GUY WIRE CONDITIONS		

JUNCTION BOX CONDITION (anode distribution) SHUNTS INSTALLED (YES/NO) RESISTORS INSTALLED (YES/NO)

ANODE CURRENT IN AMPERES :						TOTAL GROUNDED OUTPUT AMPS
1	6	11	16	21	26	
2	7	12	17	22	27	
3	8	13	18	23	28	
4	9	14	19	24	29	
5	10	15	20	25	30	

REMARKS (DESCRIBE ALL MAINT. WORK, ANODE REPAIR, ETC.):
New Rectifier Installation with new deep well grounded

RMU VOLTS
RMU AMPS

CC: AREA FILES: _____
TECH. FILES: _____

Inspected By: Mai Sales
REPORT DATE: 12-4-14

Work Order Generated: Yes No # _____

RossMAR/CITY OF T-VILLE
COMPANY

INSPECTION DATE (MM/DD/YY)

12-4-14

INDICATE TYPE OF INSPECTION

Annual

MAINT.

NEW

G/B WORK

DIV.

AREA/DIST.

SERIAL NUMBER: 930838

UNIT NO.

M.P./LOCATION: Hwy 63 & 839

DC RATING: VOLTS / AMPS 40/10

TAP SETTINGS:

COARSE 2

1

FINE

COMMON NAME:

MANUFACTURER

Universal

KWH 572

SHUNT VALUE (MVIAMPS)

50/10

LOWER LIMIT

INDICATE TYPE OF STACK (SELENIUM OR DIODE)

Diode

CALIBRATE METERS LAST

USE EXTERNAL METER FOR INSPECTION

TAKE P/S OVER P/L WITH SEPARATE TEST LEAD

	VOLTMETER	AMMETER	PIPE-TO-SOIL	ROD-TO-SDIL	P/S AND POLARITY AT NEAREST TESTPOINT
ON	28.6	4.08	-2000	2800	START - 2000
OFF	3.2	0	-1132	1831	FINISH - 2000
ON W/ NEG. GROUNDED	26.7	4.22	170.3	3100	AC/DC VOLTS - CASE TO SOIL
					AC 0 DC 2800

INSPECT THE FOLLOWING ITEMS

OK = NO PROBLEM, X = PROBLEMS AND EXPLAIN IN REMARKS, N/A = NOT APPLICABLE

RECTIFIER ITEMS

OVERHEAD/UNDERGROUND LINE INSPECTION

- POLE AC BREAKER AND BOX
- RECORD PAD
- RECTIFIER POWER BREAKER
- TAP LUGS TIGHT
- OVERHEATED PLATES
- SHUNT CONDITION
- CASE GROUND CONNECTION
- GROUND ROD CONNECTION
- STACK CONDITION
- RMU CALIBRATED

- AIR CIRCULATION
- TRANSFORMER / CHOKE ISOLATED?
- OIL COOLED UNIT OIL LEVEL/LEAKS
- RECTIFIER CASE CONDITION
- AC CONDUIT & FITTINGS CONDITION
- METER CONDITION
- WIRE INSULATION CONDITION
- CONDITION OF PANELS
- OUTLET PROPERLY GROUNDED
- SURGE OR LIGHTNING SUPPRESSOR OK?

- CONDITION OF POLE (S) / POST
- PROPER BLACK
- TREE LIMBS ON POLE LINE
- BRUSH ALONG OUB LINE
- BROKEN INSULATORS
- LEAD CONNECTIONS TIGHT
- LEADS STAPLED TO POLES / POST
- GUY WIRE CONDITIONS

JUNCTION BOX CONDITION (anode distribution)

SHUNTS INSTALLED (YES/NO)

RESISTORS INSTALLED (YES/NO)

ANODE CURRENT IN AMPERES :

1	6	11	16	21	26	TOTAL GROUNDED OUTPUT AMPS
2	7	12	17	22	27	
3	8	13	18	23	28	
4	9	14	19	24	29	
5	10	15	20	25	30	

REMARKS (DESCRIBE ALL MAINT. WORK, ANODE REPAIR, ETC.):

Now Rectifier Installation with new deep well grounded.

RMU VOLTS

RMU AMPS

CC: AREA FILES:

TECH FILES:

Mai Adkins
 Inspected By

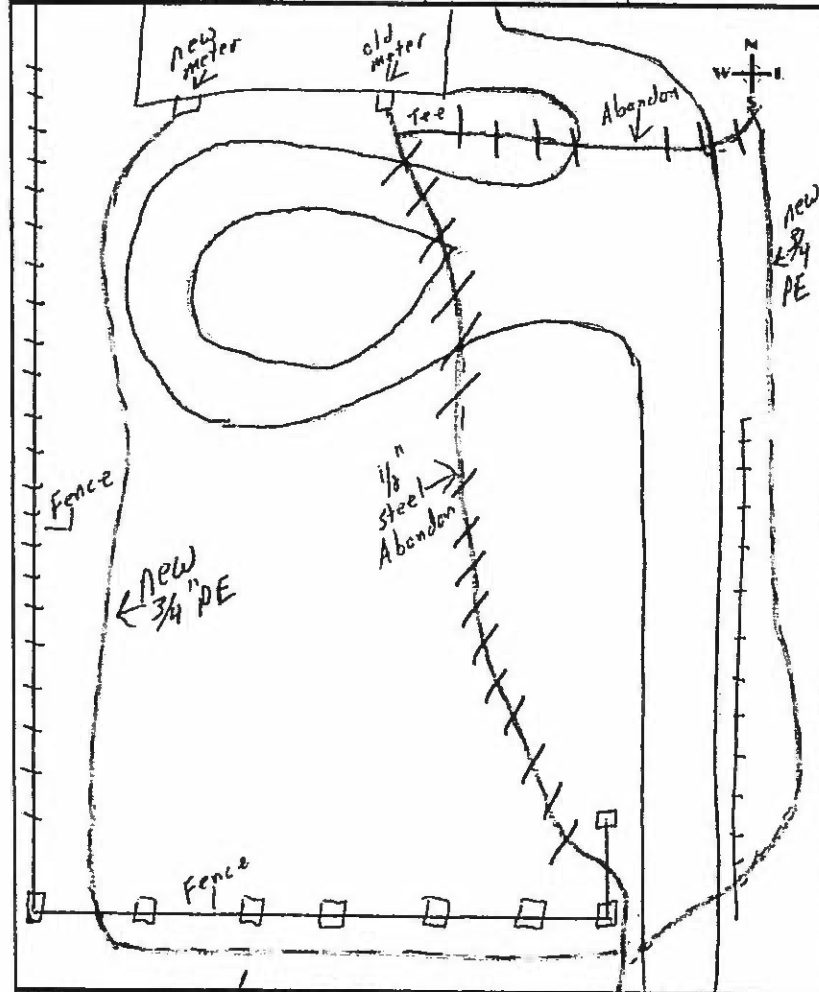
REPORT DATE:

12-4-14

Work Order Generated: Yes No //

NATURAL GAS MAIN AND SERVICE ABANDONMENT RECORDS

Address	190 Sunset Drive	Apt#		City	Tombkinsville	City	Monroe	Time Received		Date Received	9 of 14
Customer Name	Billy Jo Anderson				Phone#		Customer Account#				
Crewleader Name	Jason Warren			Date Received				Date Abandoned	9-24-14		
Date Purged	9-24-14	Purged Length	138 ft.		Purge Medium	Comp Air <input checked="" type="checkbox"/>	Inert Gas <input type="checkbox"/>	Properly Purged	Yes <input checked="" type="checkbox"/> No <input type="checkbox"/>		



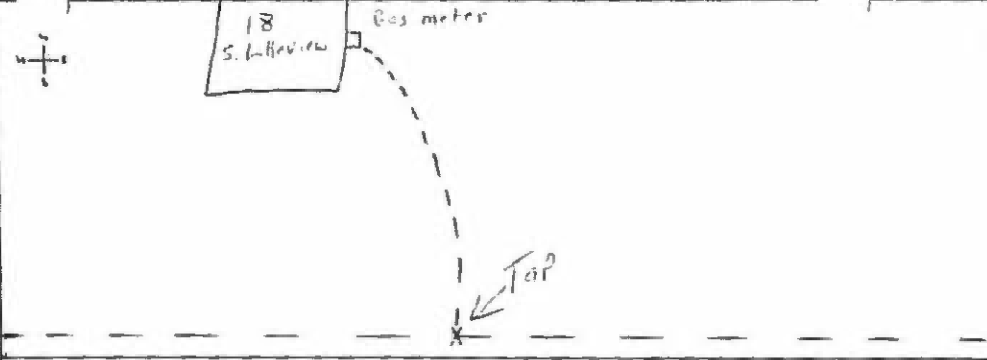
Riser Removed	Yes <input checked="" type="checkbox"/> No <input type="checkbox"/>	Riser Locked	Yes <input type="checkbox"/> No <input type="checkbox"/>
Pipe Size	1/2"	Pipe Type	Steel
Seal Type/Material			
LOCATION/TYPE TASK RENDERED			
Gas Main Location	Sunset Dr.		
Removed Valve box/Barricade	Yes <input type="checkbox"/> No <input type="checkbox"/>		
Service Location	Same as above		
Piping Class Removed	Main Removed <input type="checkbox"/>	Service Removed <input checked="" type="checkbox"/>	
<input checked="" type="checkbox"/> Drawing of streets relational to removed pipe			

REMARKS

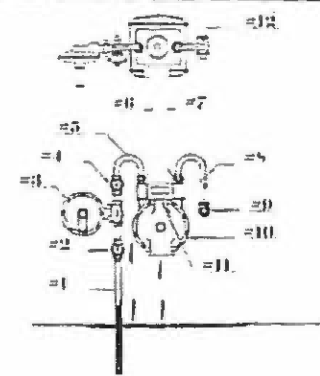
This service was leaking somewhere under the driveway. We were unable to pinpoint the leak. We laid a total of 690 ft of 3/4 PE to repair the problem.

Signature	Jason Warren	Date	9-24-14
-----------	--------------	------	---------

Address | 18 S. Lakeview Drive | City/Township | Templetonville / Monroe | State | KY



Case #				Date	11-4-14
Classification	Grade 1	Grade 2	<input checked="" type="checkbox"/>	Grade 3	
Meter #				Inside	
Manufacture #				Outside	<input checked="" type="checkbox"/>



Tap was leaking. We replaced the tap + tied the service back in. We scap checked the new tap + relight the customer.

#1 Riser	#2 HP Cock	#3 Regulator
#4 LP Cock	#5 Inlet Loop	#6 Inlet Cap/Swivel
#7 Out Cap/Swivel	#8 Outlet Loop	#9 Fuel Line Fitting
#10 Gas Meter	#11 Index	#12 Fuel Line

Detection	Location		Soil Sub	CG/EGD	Pressure	Surface	Pipe	Size	Weather
Mobile FI	Inside Bldg	Main	Rock	% Gas	(0-1)	Grass	<input checked="" type="checkbox"/> Steel	5-2.0	<input checked="" type="checkbox"/> Clear
Flame Pack	Outside Bldg	Service	Cinder	LEL	(1-30)	Dir	PE	2.0-3.0	Wet
Visual	<input checked="" type="checkbox"/> Manhole	Tap	<input checked="" type="checkbox"/> Clay	<input checked="" type="checkbox"/> UEL	(31-60)	<input checked="" type="checkbox"/> Asphalt	Cast Iron	3.0-4.0	Hot (85-100)
CG/EGD	Undergrnd	<input checked="" type="checkbox"/> Valve	Lnam	PPM	(61-99.9)	Concrete	CSST	6.0-8.0	Cold (0-40)
Smell	<input checked="" type="checkbox"/> Atmosphere	Meter	Sand		(100-399)	Sidewalk	PVCB	10.0-12.0	

Leak Cause	Component/Explanation	Part of System	Type Material	Location Area	Repair Data
Corrosion	Pipe	Transmission	Steel	Residential	<input checked="" type="checkbox"/> 1-5 Bare
Outside Force	Valve	Main	<input checked="" type="checkbox"/> Cast Iron	Rural	5-Greater Coated
Const/Defect	Fitting	Service	<input checked="" type="checkbox"/> Ductile Iron	Commercial	Date Repaired: 11-4-14
Material Defect	<input checked="" type="checkbox"/> Regulator	Meter Set	Copper	Industrial	Date Rechecked:
Other	Tap Connection	<input checked="" type="checkbox"/> Customer Pipe	Plastic		

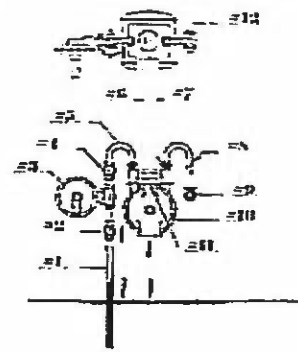
Jason W.

07/17/2014 12:33 City of Tompkinsville (FAX) 270 487 6940 P. 018/020

Customer Name	DR ROSS	Phone #		Customer Account #		No.	0014
Installer Name		Date Received		Date Installed		State	KY
Address	22 EXECUTIVE DR	City/County	TOMPKINSVILLE			Date	6-18-14

LEAK ON INLET SPUD

Case #		Date	6-18-14
Classification	Grade 1	Grade 2	Grade 3
Meter #		Inside	
Manufacture #		Outside	



#1 Riser	#2 HP Cock	#3 Regulator
#4 LP Cock	#5 Inlet Loop	#6 Inlet Cap/Swivel
#7 Out Cap/Swivel	#8 Outlet Loop	#9 Fuel Line Fitting
#10 Gas Meter	#11 Index	#12 Fuel Line

DETECTION	LOCATION	SOIL SUB	CGI/EGD	PRESSURE	SURFACE	PIPE	SIZE	WEATHER	
Mobile Fl	Inside Bldg	Main	Rock	%Gas	(0-1)	Grass	Steel	5-2.0	Clear
Flame Pack	Outside Bldg	Service	Cinder	LEL	(1-30)	Dirt	PE	2.0-3.0	Wet
Visual	Manhole	Tap	Clay	UEL	(31-60)	Asphalt	Cast Iron	3.0-4.0	Hot (85-100)
CCGI/EGD	Underground	Valve	Loam	PPM	(61-99.9)	Concrete	CSST	6.0-8.0	Cold (0-40)
Smell	Atmosphere	Meter	Sand		(100-399)	Sidewalk	PVCB	10.2-12.0	

LEAK CAUSE	COMPONENT / EXPLANATION	PART OF SYSTEM	TYPE MATERIAL	LOCATION AREA	REPAIR DATA
Corrosion	Pipe	Transmission	Steel	Residential	1-5 Bare
Outside Force	Valve	Main	Cast Iron	Rural	5-Greater Coated
Const/Defect	Fitting	Service	Ductile Iron	Commercial	Date Repaired:
Material Defect	Regulator	Meter Set	Copper	Industrial	Date Rechecked:
Other	Tap Connection	Customer Pipe	Plastic		

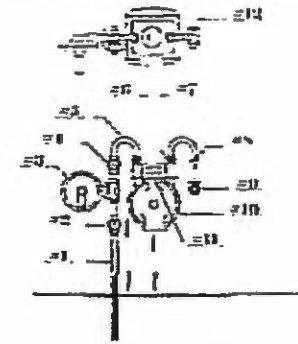
Signature: *Ma Anderson*

Date: *6-18-14*

Customer Name	OLD High School	File #	Customer Account #	No.	0013
Installer Name	Date Received		Date Installed		
Address	401 W 4 th ST	City/County	TOMPKINSVILLE	State	KY

LEAK ON RISER AT THE UNION

Case #		Date	6-18-14
Classification	Grade 1	Grade 2	Grade 3
Meter #		Inside	
Manufacture #		Outside	



#1 Riser	#2 HP Cock	#3 Regulator
#4 LP Cock	#5 Inlet Loop	#6 Inlet Cap/Swivel
#7 Out Cap/Swivel	#8 Outlet Loop	#9 Fuel Line Fitting
#10 Gas Meter	#11 Index	#12 Fuel Line

DETECTION	LOCATION	SOIL SUB	CGI/EGD	PRESSURE	SURFACE	PIPE	SIZE	WEATHER	
Mobile FI	Inside Bldg	Main	Rock	%Gas	(0-1)	Grass	Steel	✓ 5-2.0	✓ Clear
Flame Pack	✓ Outside Bldg	✓ Service	✓ Cinder	LEL	(1-30)	Dirt	PE	2.0-3.0	Wet
Visual	Manhole	Tap	Clay	UEL	(31-60)	✓ Asphalt	Cast Iron	3.0-4.0	Hot (85-100) ✓
CGI/EGD	Underground	Valve	Loam	PPM	(61-99.9)	Concrete	CSST	6.0-8.0	Cold (0-40)
Smell	Atmosphere	Meter	Sand		(100-399)	Sidewalk	PVCB	10.2-12.0	

LEAK CAUSE	COMPONENT/EXPLANATION	PART OF SYSTEM	TYPE MATERIAL	LOCATION AREA	REPAIR DATA
Corrosion	Pipe	Transmission	Steel	✓ Residential	1-5 Bare
Outside Force	Valve	Main	Cast Iron	Rural	5-Greater Coated
Const/Defect	Fitting	✓ Service	✓ Ductile Iron	Commercial	✓ Date Repaired:
Material Defect	Regulator	Meter Set	✓ Copper	Industrial	Date Rechecked:
Other	✓ Tap Connection	Customer Pipe	Plastic		

Signature: Mari Under Date: 6-18-14

07/17/2014 12:33 City of Tompkinsville (FAX) 270 487 6940 P. 016/020

Customer Name		Phone #		Customer Account #		No. U012			
Installer Name		Date Received		Date Installed		State			
Address		City/County		State		Date			
JACKSON ST + W 4 th Street		Tompkinsville		KY		6-18-14			
<div style="border: 1px solid black; padding: 5px;"> <p style="text-align: center;">JACKSON ST</p> <p style="text-align: center;">W 4th ST</p> <p style="text-align: center;">2" Valve Box with LEAK</p> </div>		Case #							
		Classification	Grade 1	Grade 2	Grade 3				
		Meter #				Inside			
		Manufacture #				Outside			
#1 Riser		#2 HP Cock		#3 Regulator					
#4 LP Cock		#5 Inlet Loop		#6 Inlet Cap/Swivel					
#7 Out Cap/Swivel		#8 Outlet Loop		#9 Fuel Line Fitting					
#10 Gas Meter		#11 Index		#12 Fuel Line					
DETECTION	LOCATION	SOIL SUB	CGI/EGD	PRESSURE	SURFACE	PIPE	SIZE	WEATHER	
Mobile FI	Inside Bldg	Main	Rock	%Gas	(0-1)	Grass	Steel	✓ 5-2.0	Clear
Flame Pack	✓ Outside Bldg	Service	Cinder	LEL	(1-30)	Dirt	PE	✓ 2.0-3.0	Wet
Visual	Manhole	Tap	Clay	✓ UEL	(31-60)	Asphalt	✓ Cast Iron	3.0-4.0	Hot (85-100)
CCGI/EGD	Undergnd	✓ Valve	Loam	PPM	(61-99.9)	Concrete	CSST	6.0-8.0	Cold (0-40)
Smell	Atmosphere	Meter	Sand		(100-399)	Sidewalk	PVCB	10.2-12.0	
LEAK CODE	COMPLESS / EXPLANATION	PART OF SYSTEM	TYPE MATERIAL	LOCATION AREA	REPAIR DATA				
Corosion	Pipe	✓ Transmission	Steel	Residential	✓ 1-5	Bare			
Outside Force	Valve	✓ Main	Cast Iron	Rural	5-Greater	Coated			
Const/Defect	Fitting	Service	Ductile Iron	Commercial	Date Repaired:				
Material Defect	Regulator	Meter Set	Copper	Industrial	Date Rechecked:				
Other	✓ Tap Connection	Customer Pipe	Plastic						

Signature: Mai Anderson

Date: 6-18-14

Customer Name		[Phone #]		[Customer Account #]		[No.]		0011	
Installer Name		Date Received		Date Installed		State		KY	
Address		City/County		Tompkinsville					
LEAK ON INLET SPUD									
Case #		Grade 1		Grade 2		Grade 3		Date	
Classification								6-18-14	
Meter #		Inside							
Manufacture #		Outside							
#1 Riser			#2 HP Cock			#3 Regulator			
#4 LP Cock			#5 Inlet Loop			#6 Inlet Cap/Swivel			
#7 Out Cap/Swivel			#8 Outlet Loop			#9 Fuel Line Fitting			
#10 Gas Meter			#11 Index			#12 Fuel Line			
DETECTION	LOCATION	SOIL SUR	CG/EGD	PRESSURE	SURFACE	PIPE	SIZE	WEATHER	
Mobile Fl	Inside Bldg	Main	Rock	%Gas	(0-1)	Grass	Steel	5-2.0	Clear
Flame Pack	Outside Bldg	Service	Cinder	LEL	(1-30)	Dirt	PE	2.0-3.0	Wet
Visual	Manhole	Tap	Clay	UEL	(31-60)	Asphalt	Cast Iron	3.0-4.0	Hot (85-100)
CCG/EGD	Underground	Valve	Loam	PPM	(61-99.9)	Concrete	CSST	6.0-8.0	Cold (0-40)
Smell	Atmosphere	Meter	Sand		(100-399)	Sidewalk	PVCB	10.2-12.0	
LEAK CAUSE	COMPONENT / EXPLANATION	PART OF SYSTEM	TYPICAL MATERIAL	LOCATION AREA	REPAIR DATA				
Corrosion	Pipe	Transmission	Steel	Residential	1-5				Bare
Outside Force	Valve	Main	Cast Iron	Rural	5-Greater				Coated
Const/Defect	Fitting	Service	Ductile Iron	Commercial					Date Repaired:
Material Defect	Regulator	Meter Set	Copper	Industrial					Date Rechecked:
Other	Tap Connection	Customer Pipe	Plastic						

Signature: *Max Anderson*

Date: *6-18-14*

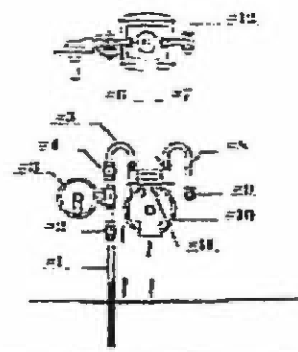
Customer Name: ROBERTSON DECORATING [Phone #] [Customer Account #] [No] 0010
 Installer Name: [] Date Received: [] Date Installed: []
 Address: 612 Celina RD City/County: Tompkinsville State: Ky

Case # []
 Classification: Grade 1 [] Grade 2 [] Grade 3 []
 Meter # [] Inside []
 Manufacture # [] Outside []

Date: 6-17-14

Robertson
Decorating

LEAK AREA
 ↓ 15'
 [] ← Fire Hydrant



Celina RD

- #1 Riser
- #2 HP Cock
- #3 Regulator
- #4 LP Cock
- #5 Inlet Loop
- #6 Inlet Cap/Swivel
- #7 Out Cap/Swivel
- #8 Outlet Loop
- #9 Fuel Line Fitting
- #10 Gas Meter
- #11 Index
- #12 Fuel Line

DETECTION	LOCATION	SOIL SUB	CGI/EGD	PRESSURE	SURFACE	PIPE	SIZE	WEATHER	
Mobile FI	Inside Bldg	Main	Rock	%Gas	(0-1)	Grass	Steel	✓ 5-20	Clear
Flame Pack	✓ Outside Bldg	Service	Cinder	L/L	(1-30)	Dirt	✓ PE	2.0-3.0	Wet
Visual	Manhole	Tap	✓ Clay	✓ UEL	(31-60)	✓ Asphalt	Cast Iron	3.0-4.0	Hot (85-100)
CCGI/EGD	Undergnd	✓ Valve	Loam	PPM	(61-99.9)	Concrete	CSST	6.0-8.0	Cold (0-40)
Smell	Atmosphere	Meter	Sand		(100-399)	Sidewalk	PVCB	10.2-12.0	

LEAK CAUSE	COMPONENT/EXPLANATION	PART OF SYSTEM	TYPE MATERIAL	LOCATORY AREA	REPAIR DATA
Corrosion	Pipe	✓ Transmission	Steel	✓ Residential	1-5 Bare
Outside Force	Valve	Main	✓ Cast Iron	Rural	✓ Greater Coated
Const/Defect	✓ Fitting	✓ Service	✓ Ductile Iron	Commercial	✓ Date Repaired:
Material Defect	✓ Regulator	Meter Set	Copper	Industrial	Date Rechecked:
Other	✓ Tap Connection	Customer Pipe	Plastic		

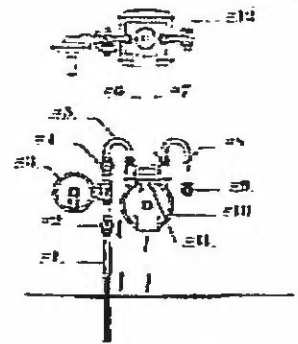
Signature: Mai [Signature]

Date: 6-17-14

Customer Name: Tompkinsville Elementary Sch Phone # _____ Customer Account # _____ No. 0009
 Installer Name _____ Date Received _____ Date Installed _____
 Address: 420 Elementary RD City/County: Tompkinsville State: KY

LEAK ON INLET SPUD
 METER 2 IN CUT

Case # _____ Date: 6-17-14
 Classification: Grade 1 _____ Grade 2 _____ Grade 3
 Meter # _____ Inside _____
 Manufacture # _____ Outside _____



#1 Riser	#2 HP Cock	#3 Regulator
#4 LP Cock	#5 Inlet Loop	#6 Inlet Cap/Swivel
#7 Out Cap/Swivel	#8 Outlet Loop	#9 Fuel Line Fitting
#10 Gas Meter	#11 Index	#12 Fuel Line

DETECTION	LOCATION		SOIL SUB	CG/EGD	PRESSURE	SURFACE	PIPE	SIZE	WEATHER
Mobile FI	Inside Bldg	Main	Rock	%Gas	(0-1)	<input checked="" type="checkbox"/> Grass	Steel	<input checked="" type="checkbox"/> 5-2.0	<input checked="" type="checkbox"/> Clear
Flame Pack	<input checked="" type="checkbox"/> Outside Bldg	<input checked="" type="checkbox"/> Service	Cinder	LEL	(1-30)	Dirt	PE	2.0-3.0	Wet
Visual	Manhole	Tap	Clay	UEL	(31-60)	Asphalt	Cast Iron	3.0-4.0	Hot (85-100)
CCG/EGD	Undergrad	Valve	Loam	PPM	(61-99.9)	Concrete	CSST	6.0-8.0	Cold (0-40)
Smell	Atmosphere	Meter	<input checked="" type="checkbox"/> Sand		(100-399)	Sidewalk	PVCB	10.2-12.0	

LEAK CAUSE	COMPONENT/EXPLASIONS	PART OF SYSTEM	TYPE MATERIAL	LOCATION AREA	REPAIR DATA
Corrosion	Pipe	Transmission	Steel	<input checked="" type="checkbox"/> Residential	1-5 Bare
Outside Force	Valve	Main	Cast Iron	Rural	5-Greater Coated
Const/Defect	<input checked="" type="checkbox"/> Fitting	<input checked="" type="checkbox"/> Service	Ductile Iron	Commercial	<input checked="" type="checkbox"/> Date Repaired:
Material Defect	Regulator	Meter Set	<input checked="" type="checkbox"/> Copper	Industrial	Date Rechecked:
Other	Tap Connection	Customer Pipe	Plastic		

Signature: [Handwritten Signature] Date: 6-17-14

Customer Name: <u>Tompkinsville Elementary sch</u>		Phone #:		Customer Account #:		No. <u>0008</u>											
Installer Name:		Date Received:		Date Installed:													
Address: <u>420 Elementary RD</u>		City/County: <u>Tompkinsville</u>		State: <u>KY</u>													
LEAK ABOVE SPUD ON 1 1/2 X 2" REDUCER LUNCH ROOM METER LOOP																	
Case #		Grade 1		Grade 2		Grade 3											
Classification		Meter #		Inside		Date: <u>6-17-14</u>											
Manufacture #				Outside													
#1 Riser		#2 HP Cock		#3 Regulator													
#4 LP Cock		#5 Inlet Loop		#6 Inlet Cap/Swivel													
#7 Out Cap/Swivel		#8 Outlet Loop		#9 Fuel Line Fitting													
#10 Gas Meter		#11 Index		#12 Fuel Line													
DETECTION		LOCATION		SOIL/SUB		CG/EGD		PRESSURE		SURFACE		PIPE		SIZE		WEATHER	
Mobile FI	Inside Bldg	Main	Rock	%Gas	(0-1)	Grass	Steel	5-2.0	Clear								
Flame Pack	Outside Bldg	Service	Cinder	LEL	(1-30)	Dirt	PE	2.0-3.0	Wet								
Visual	Manhole	Tap	Clay	UEL	(31-60)	Asphalt	Cast Iron	3.0-4.0	Hot (85-100)								
CCGI/EGD	Undergrnd	Valve	Loam	PPM	(61-999)	Concrete	CSST	6.0-8.0	Cold (0-40)								
Smell	Atmosphere	Meter	Sand		(100-399)	Sidewalk	PVCB	10.2-12.0									
LEAK CASE		COMMENT/EXPLANATION		PART OF SYSTEM		TYPE MATERIAL		LOCATION AREA		RISK DATA							
Corrosion	Pipe		Transmission	Steel	Residential	1-5	Bare										
Outside Force	Valve		Main	Cast Iron	Rural	Greater	Coated										
Const/Defect	Fitting		Service	Ductile Iron	Commercial	Date Repaired:											
Material Defect	Regulator		Meter Set	Copper	Industrial	Date Rechecked:											
Other	Tap Connection		Customer Pipe	Plastic													

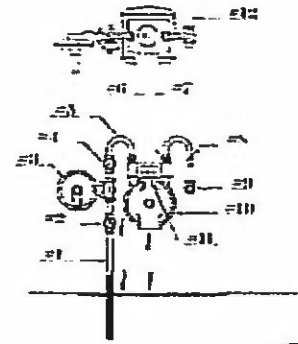
Signature: Mari Anderson

Date: 6-17-14

Customer Name Monroe Judicial Center	Phone #	Customer Account #	No. 0007
Installer Name	Date Received	Date Installed	
Address 300 N MAIN ST	City/County TOMPKINSVILLE	State KY	

LEAK AT Bottom OF Regulator

Case #	Date 4-17-14		
Classification	Grade 1	Grade 2	Grade 3 <input checked="" type="checkbox"/>
Meter #	Inside		
Manufacture #	Outside		



#1 Riser	#2 HP Cock	#3 Regulator
#4 LP Cock	#5 Inlet Loop	#6 Inlet Cap/Swivel
#7 Out Cap/Swivel	#8 Outlet Loop	#9 Fuel Line Fitting
#10 Gas Meter	#11 Index	#12 Fuel Line

DETECTION	LOCATION		SOIL/SUB	CGI/EGD	PRESSURE	SURFACE	PIPE	SIZE	WEATHER
Mobile FI	Inside Bldg	Main	Rock	%Gas	(0-1)	Grass	Steel	5-2.0	Clear
Flame Pack	Outside Bldg	Service	Cinder	LEL	(1-30)	Dirt	PE	2.0-3.0	Wet
Visual	Manhole	Tap	Clay	UEL	(31-60)	Asphalt	Cast Iron	3.0-4.0	Hot (85-100)
CCGI/EGD	Undergnd	Valve	Loam	PPM	(61-99.9)	Concrete	CSST	6.0-8.0	Cold (0-40)
Smell	Atmosphere	Meter	Sand		(100-399)	Sidewalk	PVCB	10.2-12.0	

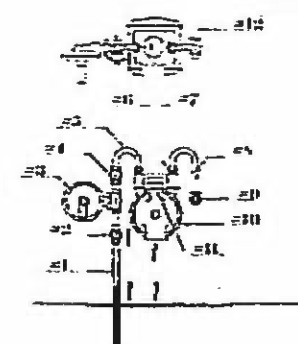
LEAK CAUSE	COMPONENT (EXPLANATION)	PART OF SYSTEM	TYPE MATERIAL	LOCATION AREA	REPAIR DATA
Corrosion	Pipe	Transmission	Steel	Residential	1-5 Bare
Outside Force	Valve	Main	Cast Iron	Rural	6-Greater Coated
Const/Defect	Fitting	Service	Ductile Iron	Commercial	Date Repaired:
Material Defect	Regulator	Meter Set	Copper	Industrial	Date Rechecked:
Other	Tap Connection	Customer Pipe	Plastic		

Signature: *Max Under* Date: 6-17-14

Customer Name		Phone #		Customer Account #		No.		0006									
Installer Name		Date Received		Date Installed		State		KY									
Address		City/County		Tompkinsville		Date		6-17-14									
5 STAR		MAGNOLIA ST		4th ST		Case #											
		2" VALVE LENKO				Classification		Grade 1 Grade 2 Grade 3									
						Meter #		Inside									
						Manufacture #		Outside									
						#1 Riser		#2 HP Cock									
						#3 Regulator		#4 LP Cock									
						#5 Inlet Loop		#6 Inlet Cap/Swivel									
						#7 Out Cap/Swivel		#8 Outlet Loop									
						#9 Fuel Line Fitting		#10 Gas Meter									
						#11 Index		#12 Fuel Line									
DETECTION		LOCATION		SOIL SUB		CGI/EGD		PRESSURE		SURFACE		PIPE		SIZE		WEATHER	
Mobile Fl	Inside Bldg	Main	<input checked="" type="checkbox"/>	Rock	%Gas	(0-1)	Grass	Steel	<input checked="" type="checkbox"/>	5-2.0	Clear						
Flame Pack	Outside Bldg	Service		Cinder	LEL	(1-30)	Dirt	PE		2.0-3.0	Wet						
Visual	Manhole	Tap		Clay	UEL	(31-60)	Asphalt	Cast Iron	<input checked="" type="checkbox"/>	3.0-4.0	Hot (85-100)						<input checked="" type="checkbox"/>
COGI/EGD	Undergnd	Valve	<input checked="" type="checkbox"/>	Loam	PPM	(61-99.9)	Concrete	CSST		6.0-8.0	Cold (0-40)						
Smell	Atmosphere	Meter		Sand		(100-399)	Sidewalk	PVCB		10.2-12.0							
LEAK CASE		CORROSION/EXPLANATION		PART OF SYSTEM		TYPE MATERIAL		LOCATION AREA		REPAIR DATA							
Corrosion	Pipe			Transmission	Steel	<input checked="" type="checkbox"/>	Residential		1-5	Bare							
Outside Force	Valve			Main	Cast Iron	<input checked="" type="checkbox"/>	Rural		5-Greater	Coated							
Const/Defect	Fitting			Service	Ductile Iron		Commercial	<input checked="" type="checkbox"/>	Date Required:								
Material Defect	Regulator			Meter Set	Copper		Industrial		Date Rechecked:								
Other	Tap Connection			Customer Pipe	Plastic												

Signature: *M. C. Anderson*

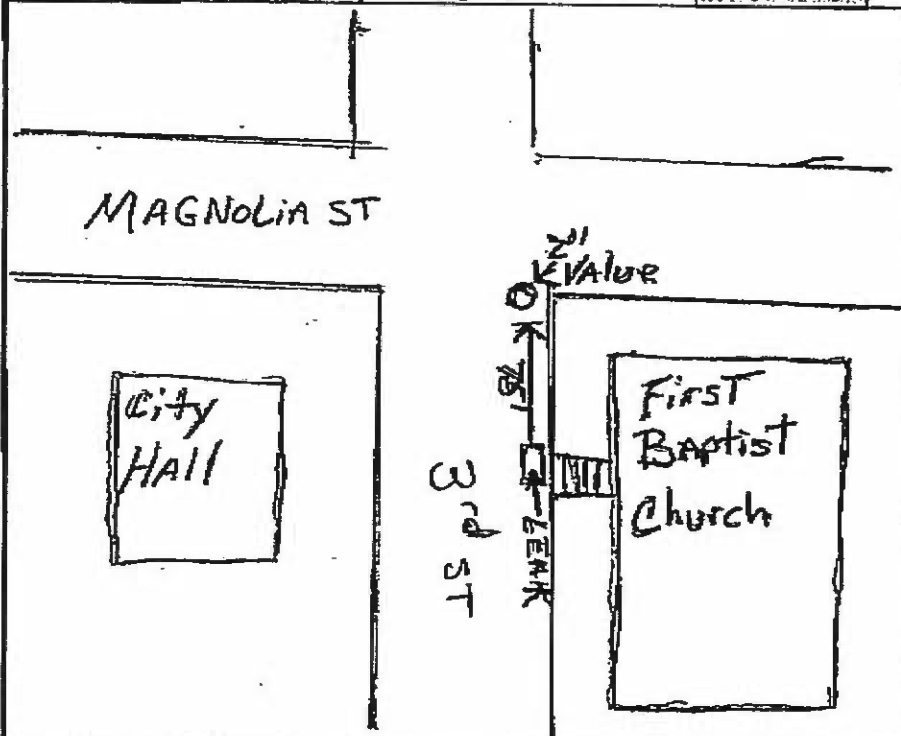
Date: 6-17-14

Customer Name		Phone #		Customer Account #		No. 0005													
Installer Name		Date Received		Date Installed															
Address: 3rd ST + MAGNOLIA		City/County: TOMPKINSVILLE		State: KY															
<p style="font-size: 2em; text-align: center;">MAGNOLIA ST</p> <p style="font-size: 1.5em;">Leak →</p> <p style="font-size: 1.5em;">2" Valve</p> <p style="font-size: 1.5em;">3rd ST</p>		Case #		Date: 6-17-14															
		Classification		Grade 1	Grade 2	Grade 3													
		Meter #		Inside															
		Manufacture #		Outside															
		#1 Riser		#2 HP Cock		#3 Regulator													
		#4 LP Cock		#5 Inlet Loop		#6 Inlet Cap/Swivel													
		#7 Out Cap/Swivel		#8 Outlet Loop		#9 Fuel Line Fitting													
		#10 Gas Meter		#11 Index		#12 Fuel Line													
DETECTION		LOCATION		SON. SUB.		CGI/EGD		PRESSURE		SURFACE		PIPE		SIZE		WEATHER			
Mobile FI		Inside Bldg		Main		Rock		%Gas		(0-1)		Grass		Steel		5-2.0		Clear	
Flame Pack		Outside Bldg		Service		Cinder		UEL		(1-30)		Dirt		FE		2.0-3.0		Wet	
Visual		Manhole		Tap		Clay		UEL		(31-60)		Asphalt		Cast Iron		3.0-4.0		Hot (85-100)	
CCGI/EGD		Undergnd		Valve		Loam		PPM		(61-99.9)		Concrete		CSST		6.0-8.0		Cold (0-40)	
Smell		Atmosphere		Meter		Sand				(100-399)		Sidewalk		PVCB		10.2-12.0			
LEAK CAUSE		COMPONENT/EXPLANATION		PART OF SYSTEM		TYPE MATERIAL		LOCATION AREA		REAM DATA									
Corrosion		Pipe		Transmission		Steel		Residential		1-5		Bare							
Outside Force		Valve		Main		Cast Iron		Rural		5-Greater		Coated							
Const/Defect		Fitting		Service		Ductile Iron		Commercial		Date Repaired:									
Material Defect		Regulator		Meter Set		Copper		Industrial		Date Rechecked:									
Other		Tap Connection		Customer Pipe		Plastic													

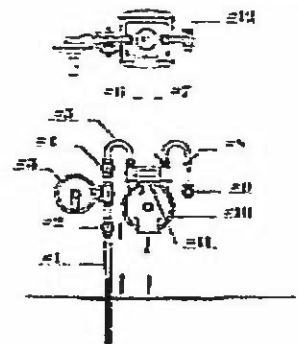
Signature: Maui Anderson

Date: 6-17-14

Customer Name: FIRST BAPTIST Church Phone #: _____ Customer Account #: _____ No. 0004
 Installer Name: _____ Date Received: _____ Date Installed: _____
 Address: 302 N MAGNOLIA ST City/County: TOMPKINSVILLE State: KY



Case #: _____ Date: 6-17-14
 Classification: Grade 1 _____ Grade 2 _____ Grade 3
 Meter #: _____ Inside: _____
 Manufacture #: _____ Outside: _____



- #1 Riser
- #2 HP Cock
- #3 Regulator
- #4 LP Cock
- #5 Inlet Loop
- #6 Inlet Cap/Swivel
- #7 Out Cap/Swivel
- #8 Outlet Loop
- #9 Fuel Line Fitting
- #10 Gas Meter
- #11 Index
- #12 Fuel Line

DETECTION	LOCATION		SOIL/SUB	CG/EGD	PRESSURE	SURFACE	PIPE	SIZE	WEATHER
Mobile FI	Inside Bldg	Main	Rock	%Gas	(0-1)	Grass	Steel	✓ 5-2.0	Clear
Flame Pack	✓ Outside Bldg	Service	Cinder	LEL	(1-30)	Dirt	PE	2.0-3.0	Wet
Visual	Manhole	Tap	Clay	✓ UEL	(31-60)	✓ Asphalt	✓ Cast Iron	3.0-4.0	✓ Hot (85-100)
CCG/EGD	Undergrnd	✓ Valve	Loam	PPM	(61-99.9)	Concrete	CSST	6.0-8.0	Cold (0-40)
Small	Atmosphere	Meter	Sand		(100-399)	Sidewalk	PVCB	10.2-12.0	

LEAK CAUSE	COMPONENT / EXPLANATION	PART OF SYSTEM	TYPE MATERIAL	LOCATION AREA	REPAIR DATA
Corrosion	Pipe	✓ Transmission	Steel	✓ Residential	1-5 Bare
Outside Force	Valve	Main	✓ Cast Iron	Rural	✓ Greater Coated
Const/Defect	Fitting	Service	Ductile Iron	Commercial	✓ Date Repaired:
Material Defect	Regulator	Meter Set	Copper	Industrial	Date Rechecked:
Other	✓ Tap Connection	Customer Pipe	Plastic		

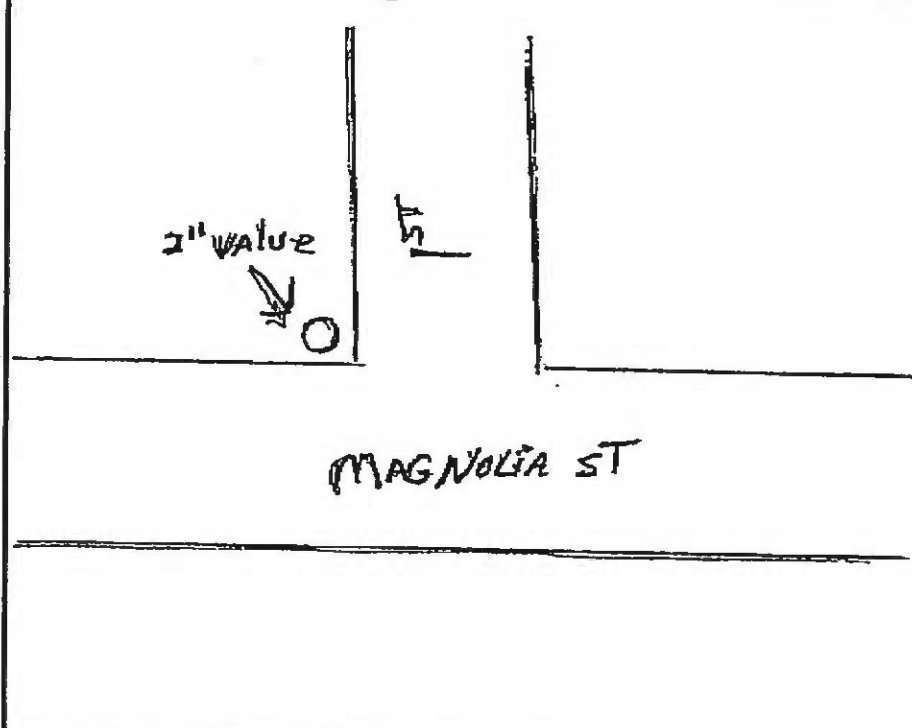
Signature: Mark Anderson Date: 6-17-14

Customer Name WESS STEPHENS		Phone #		Customer Account #		No. 0003			
Installer Name		Date Received		Date Installed					
Address 215 N MAIN ST		City/County TOMPKINSVILLE		State KY					
Case #		Date 6-17-14							
Classification		Grade 1	Grade 2	Grade 3					
Meter #		Inside		Outside					
Manufacture #									
#1 Riser		#2 HP Cock		#3 Regulator					
#4 LP Cock		#5 Inlet Loop		#6 Inlet Cap/Swivel					
#7 Out Cap/Swivel		#8 Outlet Loop		#9 Fuel Line Fitting					
#10 Gas Meter		#11 Index		#12 Fuel Line					
LEAK ON UNION AND 1ST 90°									
DETECTION	LOCATION		SOIL/SUB	CGI/EGD	PRESSURE	SURFACE	PIPE	SIZE	WENTHER
Mobile FI	Inside Bldg	Main	Rock	%Gas	(0-1)	Grass	Steel	5-2.0	Clear
Flame Pack	Outside Bldg	Service	Cinder	LEL	(1-30)	Dirt	PE	2.0-3.0	Wet
Visual	Manhole	Tap	Clay	UEL	(31-60)	Asphalt	Cast Iron	3.0-4.0	Hot (85-100)
CCGI/EGD	Underground	Valve	Loam	PPM	(61-99.9)	Concrete	CSST	6.0-8.0	Cold (0-40)
Smell	Atmosphere	Meter	Sand		(100-399)	Sidewalk	PVCB	10.2-12.0	
LEAK CAUSE	COMPONENT/EXPLANATION		PART OF SYSTEM	TYPE MATERIAL	LOCATION AREA	REPAIR DATA			
Corrosion	Pipe		Transmission	Steel	Residential	1-5	Bare		
Outside Force	Valve		Main	Cast Iron	Rural	5 Greater	Coated		
Const/Defect	Fitting		Service	Ductile Iron	Commercial	Date Repaired:			
Material Defect	Regulator		Meter Set	Copper	Industrial	Date Rechecked:			
Other	Tap Connection		Customer Pipe	Plastic					

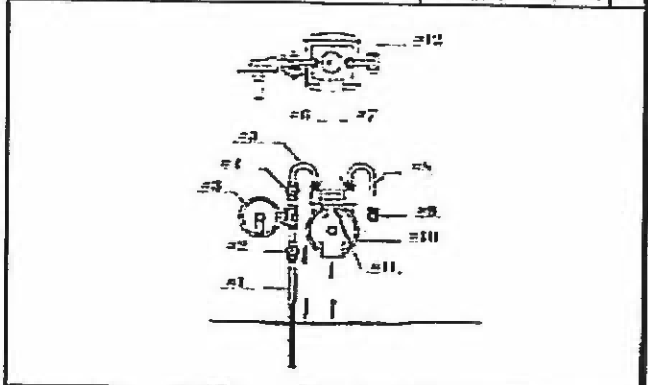
Signature: Ma Anderson

Date: 6-17-14

Customer Name: _____ Phone #: _____ Customer Account #: _____ No. 0602
 Installer Name: _____ Date Received: _____ Date Installed: _____
 Address: 1st & Magnolia St City/County: Tompkinsville State: KY
 Date: 6-17-14



Case # _____
 Classification: Grade 1 _____ Grade 2 _____ Grade 3
 Meter # _____ Inside _____
 Manufacture # _____ Outside



#1 Riser	#2 HP Cock	#3 Regulator
#4 LP Cock	#5 Inlet Loop	#6 Inlet Cap/Swivel
#7 Out Cap/Swivel	#8 Outlet Loop	#9 Fuel Line Fitting
#10 Gas Meter	#11 Index	#12 Fuel Line

DETECTION	LOCATION	SOIL SUB	CG/EGD	PRESSURE	SURFACE	PIPE	SIZE	WEATHER	
Mobile FI	Inside Bldg	Main	<input checked="" type="checkbox"/> Rock	%Gas	(0-1)	Grass	Steel	<input checked="" type="checkbox"/> 5-20	Clear
Flame Pack	<input checked="" type="checkbox"/> Outside Bldg	Service	Cinder	LEL	(1-30)	Dirt	<input checked="" type="checkbox"/> PE	2.0-3.0	<input checked="" type="checkbox"/> Wet
Visual	Manhole	Tap	Clay	<input checked="" type="checkbox"/> UEL	(31-60)	Asphalt	Cast Iron	3.0-4.0	Hot (85-100)
CCG/EGD	Underground	<input checked="" type="checkbox"/> Valve	Loam	PPM	(61-99.9)	Concrete	CSST	6.0-8.0	Cold (0-40)
Smell	Atmosphere	Meter	Sand		(100-399)	Sidewalk	PVCB	10.2-12.0	

LEAK CAUSE	COMPONENT / EXPLANATION	PART OF SYSTEM	TYPE MATERIAL	LOCATIONS AREA	REPAIR DATA
Corrosion	Pipe	<input checked="" type="checkbox"/> Transmission	Steel	<input checked="" type="checkbox"/> Residential	1-5
Outside Force	Valve	Main	<input checked="" type="checkbox"/> Cast Iron	Rural	5-Greater
Const/Defect	Fitting	Service	Ductile Iron	Commercial	Date Repaired:
Material Defect	<input checked="" type="checkbox"/> Regulator	Meter Set	Copper	Industrial	Date Rechecked:
Other	<input checked="" type="checkbox"/> Tap Connection	Customer Pipe	Plastic		

Signature: Mai Anderson

Date: 6-17-14

Customer Name JACKSON ST APPT		Phone #		Customer Account #		No. 0001													
Installer Name		Date Received		Date Installed															
Address		City/County Tompkinsville		State KY															
		Case #		Date 6-17-14															
		Classification		Grade 1		Grade 2													
						Grade 3 <input checked="" type="checkbox"/>													
		Meter #		Inside															
		Manufacture #		Outside		<input checked="" type="checkbox"/>													
		#1 Riser		#2 HP Cock		#3 Regulator													
		#4 LP Cock		#5 Inlet Loop		#6 Inlet Cap/Swivel													
		#7 Out. Cap/Swivel		#8 Outlet Loop		#9 Fuel Line Fitting													
		#10 Gas Meter		#11 Index		#12 Fuel Line													
DETECTION		LOCATION		SON. SUB.		CGI/EGD		PRESSURE		SURFACE		PIPE		SIZE		WEATHER			
Mobile FI		<input checked="" type="checkbox"/> Inside Bldg		Main		Rock		%Gas		(0-1)		Grass		Steel		<input checked="" type="checkbox"/> 5-2.0		Clear	
Flame Pack		<input checked="" type="checkbox"/> Outside Bldg		<input checked="" type="checkbox"/> Service		Cinder		LEL		(1-30)		Dirt		PE		2.0-3.0		<input checked="" type="checkbox"/> Wet	
Visual		Manhole		Tap		Clay		UJEL		(31-60)		<input checked="" type="checkbox"/> Asphalt		Cast Iron		3.0-4.0		Hot (85-100) <input checked="" type="checkbox"/>	
CCGI/EGD		Undergrad		Valve		Loam		PPM		(61-99.9)		Concrete		CSST		6.0-8.0		Cold (0-40) <input checked="" type="checkbox"/>	
Smell		Atmosphere		Meter		<input checked="" type="checkbox"/> Sand				(100-399)		Sidewalk		PVCB		10.2-12.0			
SAFETY LEAK CAUSE		COMPONENT/INSTALLATION		PART OF SYSTEM		TYPE MATERIAL		LOCATION AREA		REPAIR DATA									
Corrosion		Pipe		Transmission		Steel		<input checked="" type="checkbox"/> Residential		1-5		Bare							
Outside Force		Valve		<input checked="" type="checkbox"/> Main		Cast Iron		Rural		5-Greater		Coated							
Const/Defect		Fitting		Service		Ductile Iron		Commercial		Date Repaired:									
Material Defect		Regulator		Meter Set		<input checked="" type="checkbox"/> Copper		Industrial		Date Rechecked:									
Other		<input checked="" type="checkbox"/> Tap Connection		Customer Pipe		Plastic													

Signature: *Mark Anderson*

Date: *6-17-14*

Installer Name		Date Received		Customer Account #		No.		UNIT											
Address		City/County		Date Installed		State		Ky											
W 4th Street		Tompkinsville																	
Case #		Date		7-17-14															
Classification		Grade 1		Grade 2		Grade 3		<input checked="" type="checkbox"/>											
Meter #		Inside																	
Manufacture #		Outside																	
#1 Riser			#2 HP Cock			#3 Regulator													
#4 LP Cock			#5 Inlet Loop			#6 Inlet Cap/Swivel													
#7 Out Cap/Swivel			#8 Outlet Loop			#9 Fuel Line Fitting													
#10 Gas Meter			#11 Index			#12 Fuel Line													
DETECTION		LOCATION		SOIL SUB		CGI/EGD		PRESSURE		SURFACE		PIPE		SIZE		WEATHER			
Mobile FI		Inside Bldg		Main		Rock		%Gas		(0-1)		Grass		Steel		5-2.0		Clear	
Flame Pack		Outside Bldg		Service		Cinder		LEL		(1-30)		Dirt		PE		2.0-3.0		Wet	
Visual		Manhole		Tap		Clay		UEL		(31-60)		Asphalt		Cast Iron		3.0-4.0		Hot (85-100)	
CCGI/EGD		Underground		Valve		Loam		PPM		(61-99.9)		Concrete		CSST		6.0-8.0		Cold (0-40)	
Smell		Atmosphere		Meter		Sand				(100-399)		Sidewalk		PVCB		10.2-12.0			
LEAK CAUSE		COMPONENT / EXPLANATION		PART OF SYSTEM		TYPE MATERIAL		LOCATION AREA		REPAIR DATA									
Corrosion		Pipe		Transmission		Steel		Residential		1-5		Bare							
Outside Force		Valve		Main		Cast Iron		Rural		5-Greater		Coated							
Const/Defect		Fitting		Service		Ductile Iron		Commercial		Date Repaired:									
Material Defect		Regulator		Meter Set		Copper		Industrial		Date Rechecked:									
Other		Tap Connection		Customer Pipe		Plastic													

LEAK AT LOCK VALVE

Signature: *Max Anderson*

Date: 7-17-14

CUSTOMER NAME Installer Name		[Public #]		[Customer Account #]		[No.] 0015	
Address		Date Received		Date Installed		State	
7th street of ADAM Bowler		Tompkinsville		KY		Date: 7-3-14	
Case #		Grade 1		Grade 2		Grade 3	
Classification		Meter #		Inside			
Manufacture #		Outside					

#1 Riser	#2 HP Cock	#3 Regulator
#4 LP Cock	#5 Inlet Loop	#6 Inlet Cap/Swivel
#7 Out Cap/Swivel	#8 Outlet Loop	#9 Fuel Line Fitting
#10 Gas Meter	#11 Index	#12 Fuel Line

DETECTION	LOCATION	SOIL SUB	CCG/EGD	PRESSURE	SURFACE	PIPE	SIZE	WEATHER	
Mobile FI	Inside Bldg	Main	Rock	%Gas	(0-1)	Grass	Steel	5-2.0	Clear
Flame Pack	Outside Bldg	Service	Cinder	VEL	(1-30)	Dirt	PE	2.0-3.0	Wet
Visual	Manhole	Tap	Clay	DEL	(31-60)	Asphalt	Cast Iron	3.0-4.0	Hot (85-100)
CCG/EGD	Undergrnd	Valve	Loam	PPM	(61-99.9)	Concrete	CSST	6.0-8.0	Cold (0-40)
Smell	Atmosphere	Meter	Sand		(100-399)	Sidewalk	PVCB	10.2-12.0	

LEAK CAUSE	COMPONENT / EXPLANATION	PART OF SYSTEM	TYPE MATERIAL	LOCATION AREA	REPAIR DATA
Corrosion	Pipe	Transmission	Steel	Residential	1-5 Bare
Outside Force	Valve	Main	Cast Iron	Rural	5-Greater Coated
Const/Defect	Fitting	Service	Ductile Iron	Commercial	Date Repaired:
Material Defect	Regulator	Meter Set	Copper	Industrial	Date Rechecked:
Other	Tap Connection	Customer Pipe	Plastic		

Signature: *Mari Wheeler*

Date: 7-3-14

Address: Intersection of Old Mulkey + J. Proff. + Rd. City: Tompkinsville / Monroe State: KY Date: 12-2-14

Classification: Grade 1 Grade 2 Grade 3

Meter # _____ Manufacture # _____

Location: Inside Outside

Diagram Labels: #1 Riser, #2 HP Cock, #3 Regulator, #4 LP Cock, #5 Inlet Loop, #6 Inlet Cap/Swivel, #7 Out Cap/Swivel, #8 Outlet Loop, #9 Fuel Line Fitting, #10 Gas Meter, #11 Index, #12 Fuel Line

Handwritten notes: 2" PE, 3/4" PE, 5ft, Break, 6ft, J. Proff. + Rd., old Mulkey Rd.

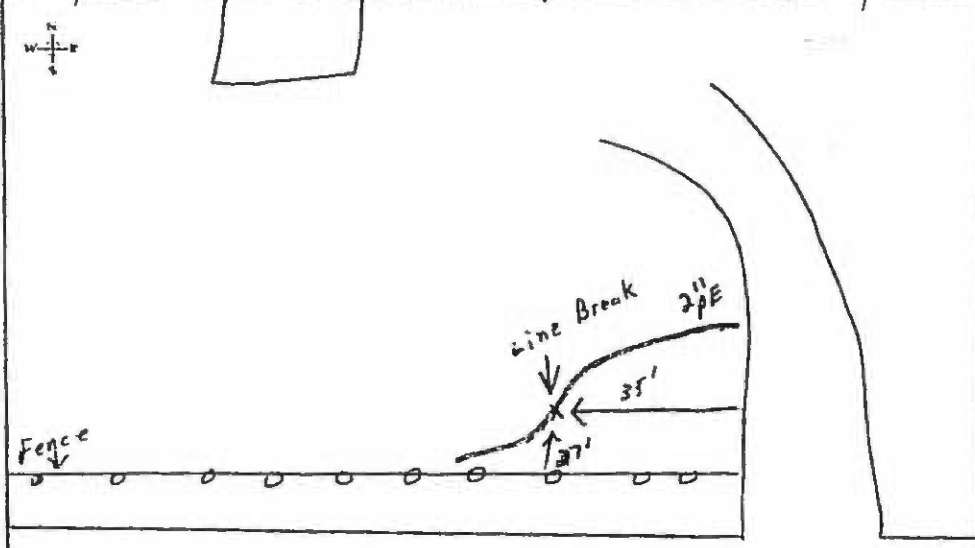
Detection	Location	Soil/Sub	CGI/EGD	Pressure	Surface	Pipe	Soil	Weather	
Mobile FI	Inside Bldg	Main	Reck	% Gas	(0-1)	Grass	<input checked="" type="checkbox"/> Steel	5-2.0	<input checked="" type="checkbox"/> Clear
Flame Pack	Outside Bldg	Service	<input checked="" type="checkbox"/> Cinder	LEL	(1-30)	Dirt	PE	<input checked="" type="checkbox"/> 2.0-3.0	Wet <input checked="" type="checkbox"/>
Visual	<input checked="" type="checkbox"/> Manhole	Tap	Clay	<input checked="" type="checkbox"/> UEL	(31-60)	<input checked="" type="checkbox"/> Asphalt	Cast Iron	3.0-4.0	Hot (15-100)
CGI/EGD	Undergrad	<input checked="" type="checkbox"/> Valve	Loam	PPM	(61-99.9)	Concrete	CSST	6.0-8.0	Cold (0-40)
Smell	<input checked="" type="checkbox"/> Atmosphere	Meter	Sand		(100-399)	Sidewalk	PVCB	10.0-12.0	

Leak Cause	Component/Explanation	Part of System	Type/Material	Location/Area	Repair Data	
Corrosion	Pipe	Transmission	Steel	Residential	1-5	Bare
Outside Force	<input checked="" type="checkbox"/> Valve	Main	<input checked="" type="checkbox"/> Cast Iron	Rural	<input checked="" type="checkbox"/> 5-Greater	Coated
Cons/Defect	Fitting	Service	<input checked="" type="checkbox"/> Ductile Iron	Commercial	Date Repaired: 12-2-14	
Material Defect	Regulator	Meter Set	Copper	Industrial	Date Rechecked:	
Other	Tap Connection	Customer Pipe	Plastic	<input checked="" type="checkbox"/>		

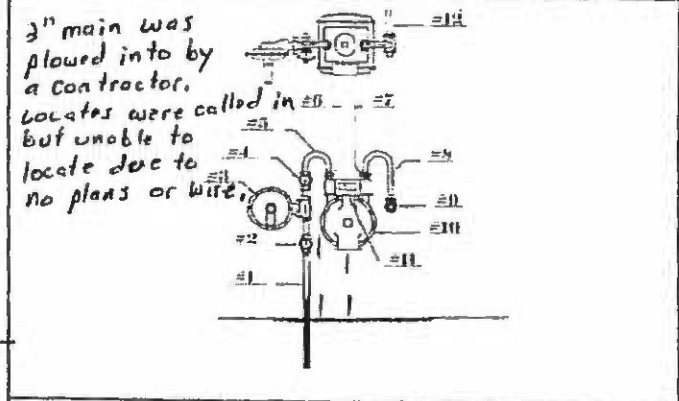
Max Stephens

Address Un Known.
Customer Uses P.O. Box.

Address: Old Mulkey Rd City/County: Tomp Kinsville / Monroe State: KY Date: 11-12-14



Case #			Date	11-12-14
Classification	Grade 1	Grade 2	Grade 3	
Meter #			Inside	
Manufacturer #			Outside	



#1 Riser	#2 HP Cock	#3 Regulator
#4 LP Cock	#5 Inlet Loop	#6 Inlet Cap/Swivel
#7 Out Cap/Swivel	#8 Outlet Loop	#9 Fuel Line Fitting
#10 Gas Meter	#11 Index	#12 Fuel Line

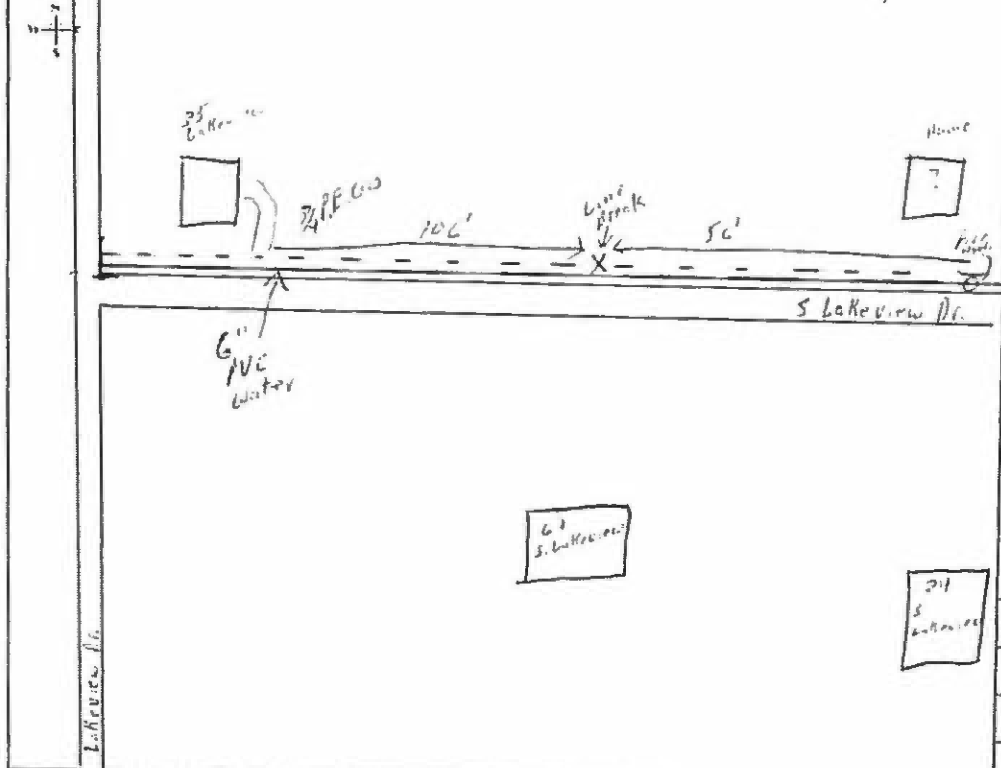
old Mulkey Rd.

Detection	Location		Soil/Sub	CG/EGD	Pressure	Surface	Pipe	Size	Weather
Mobile FI	Inside Bldg	Main	Rock	% Gas	(0-1)	Grass	Steel	5-1.0	Clear
Flame Pack	Outside Bldg	Service	Cloder	LEL	(1-30)	Dirt	PE	2.0-3.0	Wet
Visual	Manhole	Tap	Clay	UEL	(31-40)	Asphalt	Cast Iron	3.0-4.0	Hot (85-100)
CG/EGD	Undergrnd	Valve	Loam	PPM	(61-99.9)	Concrete	CSST	6.0-8.0	Cold (0-40)
Smell	Atmosphere	Meter	Sand		(100-399)	Sidewalk	PVCB	10.0-12.0	

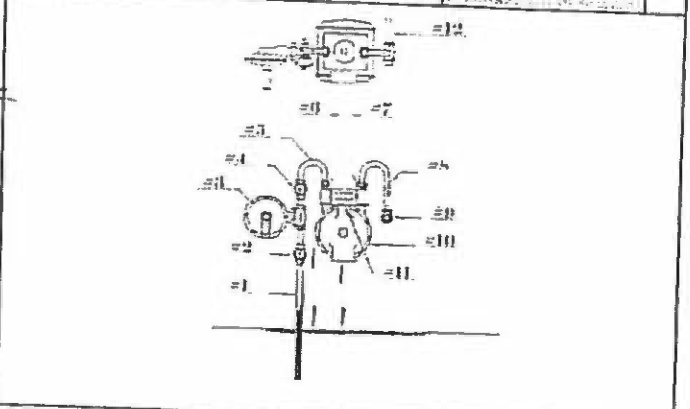
Leak Cause	Component/Explanation	Part of System	Type/Material	Location/Area	Repair Data
Corrosion	Pipe	Transmission	Steel	Residential	1-5 Bare
Outside Force	Valve	Main	Cast Iron	Rural	5-Greater Coated
Caust/Defect	Fitting	Service	Ductile Iron	Commercial	Date Repaired: 11-12-14
Material Defect	Regulator	Meter Set	Copper	Industrial	Date Rechecked:
Other	Tap Connection	Customer Pipe	Plastic		

Jason W.

Address: Lakeview Drive City: Tompkinsville / Monroe State: KY



Case #				Date	10-13-14
Classification	Grade 1	<input checked="" type="checkbox"/> Grade 2	Grade 3		
Meter #				Inside	
Manufacture #				Outside	<input checked="" type="checkbox"/>



#1 Riser	#2 HP Cock	#3 Regulator
#4 LP Cock	#5 Inlet Loop	#6 Inlet Cap/Swivel
#7 Out Cap/Swivel	#8 Outlet Loop	#9 Fuel Line Fitting
#10 Gas Meter	#11 Index	#12 Fuel Line

Detection	Location			Soil Sat.	CGI/EGD	Pressure	Surface		Pipe		Size	Weather
	Inside Bldg	Main					Grass	Steel				
Mobile FI	<input type="checkbox"/>	<input type="checkbox"/>	<input type="checkbox"/>	Rock	% Gas	(0-1)		<input checked="" type="checkbox"/>			5-2.0	<input checked="" type="checkbox"/> Clear
Flame Pack	<input type="checkbox"/>	<input checked="" type="checkbox"/>	<input checked="" type="checkbox"/>	Gravel	LEL	(1-30)	Dir		<input checked="" type="checkbox"/>		2.0-3.0	<input type="checkbox"/> Wet
Visual	<input checked="" type="checkbox"/>	<input type="checkbox"/>	<input type="checkbox"/>	Clay	UEL	(31-60)	Asphalt			<input checked="" type="checkbox"/>		<input type="checkbox"/> Hot (85-100)
CGI/EGD	<input type="checkbox"/>	<input type="checkbox"/>	<input type="checkbox"/>	Loam	PPM	(61-99.9)	Concrete					<input type="checkbox"/> Cold (0-40)
Smell	<input checked="" type="checkbox"/>	<input type="checkbox"/>	<input type="checkbox"/>	Sand		(100-399)	Sidewalk		<input checked="" type="checkbox"/>		10.0-12.0	

Leak Cause	Component/Explanation	Part of System	Type/Material	Location Area	Repair Data
Corrosion	<input type="checkbox"/> Pipe	<input checked="" type="checkbox"/> Transmission	Steel	Residential	<input checked="" type="checkbox"/> 1-5
Outside Force	<input checked="" type="checkbox"/> Valve	Main	Cast Iron	Rural	<input type="checkbox"/> Bare
Const/Defect	<input type="checkbox"/> Fitting	Service	<input checked="" type="checkbox"/> Ductile Iron	Commercial	<input type="checkbox"/> 5-Greater
Material Defect	<input type="checkbox"/> Regulator	Meter Set	Copper	Industrial	Date Replaced: <u>10-11-14</u>
Other	<input type="checkbox"/> Tap Connection	Customer Pipe	Elastic		Date Rechecked:

Jason W.

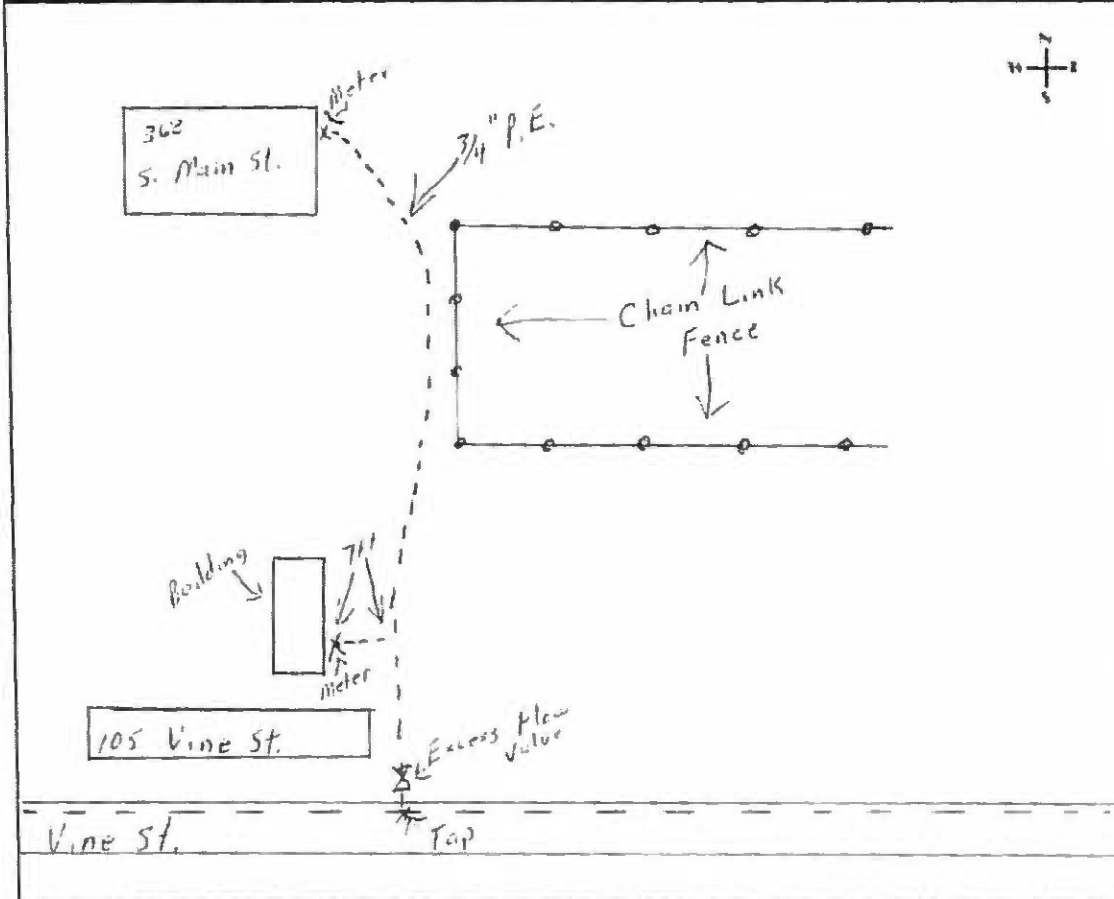
Address		E. Home Rd.		City/Town		Templetsville / Monroe		State		Ky	
								Date		10-8-14	
Case #		Grade 1		Grade 2		Grade 3		Meter #		Inside	
Classification		<input checked="" type="checkbox"/>		<input type="checkbox"/>		<input type="checkbox"/>		Manufacture #		Outside	
										<input checked="" type="checkbox"/>	
<p>Hand-drawn site map showing E. Home Rd, a fence, a 3-inch pipe, a peak in the bank, and a fall bank.</p>						<p>Schematic diagram of a gas meter assembly with numbered components #1 through #12.</p>					
Hwy 163 N 'Edmonton Rd'						#1 Riser		#2 HP Cock		#3 Regulator	
						#4 LP Cock		#5 Inlet Loop		#6 Inlet Cap/Swivel	
						#7 Out Cap/Swivel		#8 Outlet Loop		#9 Fuel Line Fitting	
						#10 Gas Meter		#11 Index		#12 Fuel Line	
Detection		Location		Soil Sub.		CGI/EGD		Pressure		Surface	
Mobile FI		Inside Bldg		Main		Rock		% Gas		(10-1)	
Flame Path		Outside Bldg		Service		Cinder		LEL		(1-30)	
Visual		Manhole		Tap		Clay		UEL		(31-60)	
CGI/EGD		Underground		Valve		Loam		PPM		(67-99.9)	
Smell		Atmosphere		Meter		Sand				(100-399)	
Leak Cause		Component/Explanation		Part of System		Type Material		Location Area		Repair Data	
Corrosion		Pipe		Transmission		Steel Corrosion		Residential		1-5	
Outside Force		Valve		Main		Cast Iron		Rural		5-Greater	
Const/Defect		Fitting		Service		Ductile Iron		Commercial		Date Repaired: 10-8-14	
Material Defect		Regulator		Meter Set		Copper		Industrial		Date Rechecked:	
Other		Tap Connection		Customer Pipe		Plastic					

psw

NATURAL GAS MAIN AND SERVICE INSTALLATION RECORDS

Address	362 S. Main Street		Apt#		City	Templeville	City	Moore	Time Received		Date Received	
Customer Name	Teresa Fox					Phone#		Customer Account#				
Installer Name	Marvin Anderson / Justin Tucker				Date Received				Date Installed	10-13-14		
Date Tested	10-13-14		Test Pressure psig	90 ^{psi}		Test Medium	Natural Gas	Properly Purged		Yes	<input checked="" type="checkbox"/> No	
							Comp Air	<input checked="" type="checkbox"/>				
							Inert Gas					
Meter Set	Yes <input checked="" type="checkbox"/>	No <input type="checkbox"/>	Meter Cof#			Meter Mfg#	14Y713725		Index Reading	0000		

Meter Locked	Yes	<input checked="" type="checkbox"/>	No	<input type="checkbox"/>	Card Left	Yes	<input type="checkbox"/>	No	<input checked="" type="checkbox"/>
--------------	-----	-------------------------------------	----	--------------------------	-----------	-----	--------------------------	----	-------------------------------------



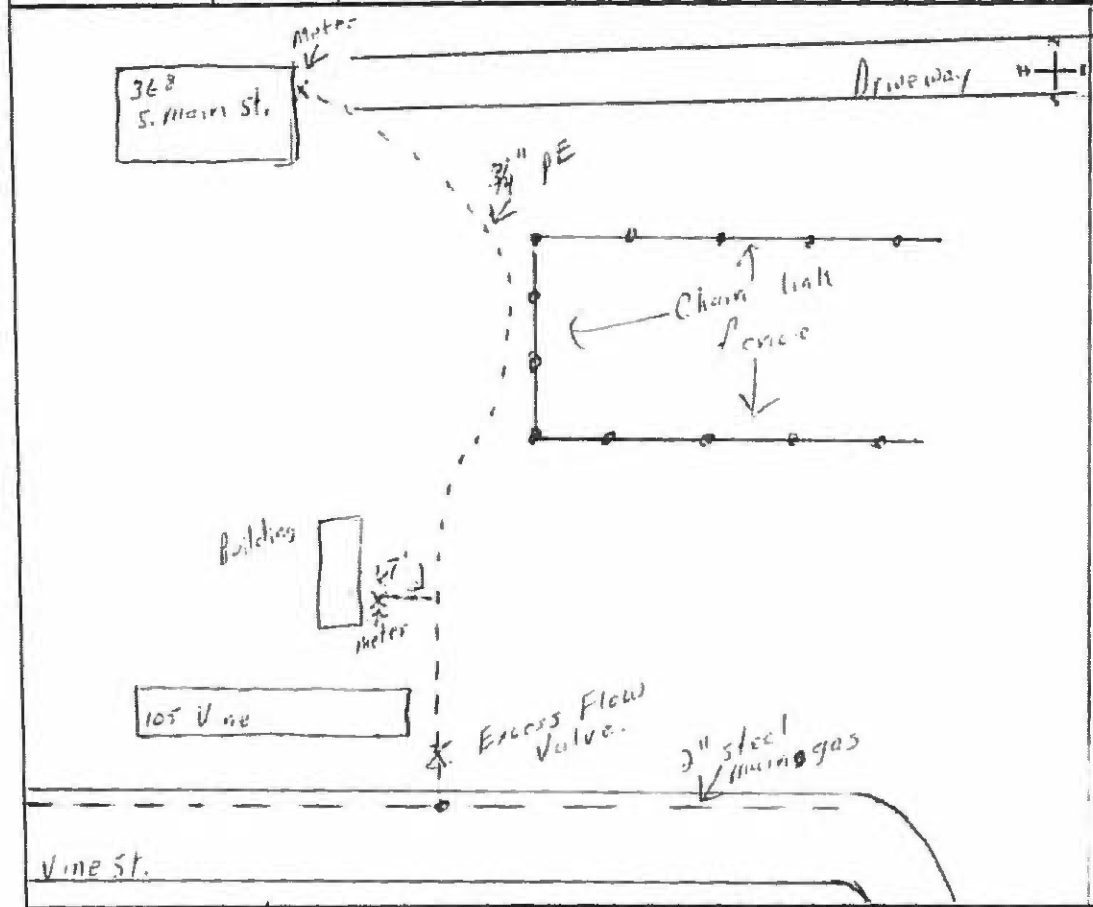
LOCATION									
Gas Main Location	Vine Street								
Mainline Valve Installed	Yes	<input checked="" type="checkbox"/>	No	<input type="checkbox"/>					
Service Location	362 S Main St.								
Service Valve			Tapping Tee	<input checked="" type="checkbox"/>					

REMARKS									
Ran a total of 314 ft of									
3/4" P.E. gas service line + caught									
2 homes with it. An excess									
flow valve was installed at the									
tap.									

Signature							Date	10-13-14			
-----------	--	--	--	--	--	--	------	----------	--	--	--

NATURAL GAS MAIN AND SERVICE INSTALLATION RECORDS

Address	105 Vine St	Apt#		City	Tompkinsville	Cty	Monroe	Time Received		Date Received	
Customer Name	Wendell Owens			Phone#		Customer Account#					
Installer Name	Marvin Anderson / Justin Tucker			Date Received		Date Installed	10-13-14				
Date Tested	10-13-14		Test Pressure psig	90ps		Test Medium	Natural Gas	Properly Purged	Yes	<input checked="" type="checkbox"/>	No
							Comp Air				
							Inert Gas				
Meter Set	Yes <input checked="" type="checkbox"/>	No <input type="checkbox"/>	Meter Co#		Meter Mfg#	141713730		Index Reading	0000		

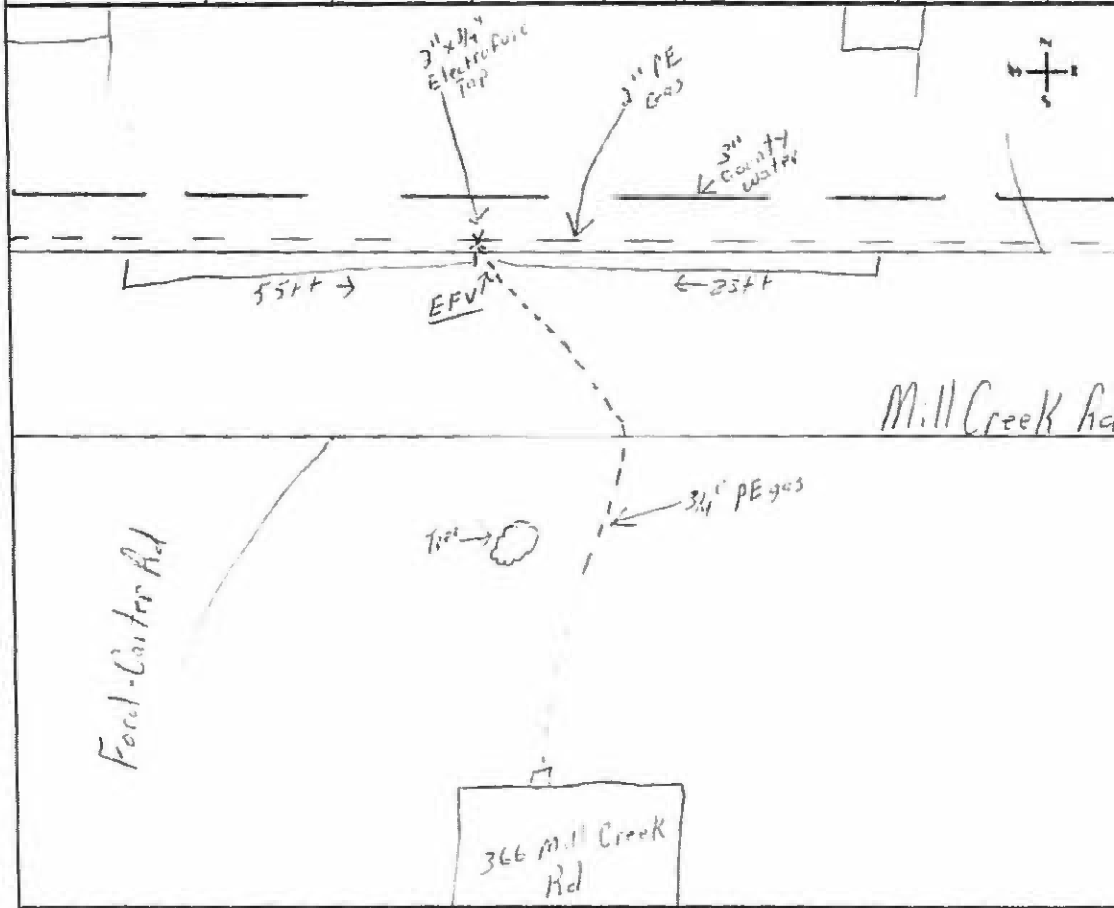


Meter Locked	Yes	<input checked="" type="checkbox"/>	No	Card Left	Yes	No	<input checked="" type="checkbox"/>
LOCATION							
Gas Main Location	Vine St.						
Mainline Valve Installed	Yes		No	<input checked="" type="checkbox"/>			
Service Location	105 Vine St.						
Service Valve		Tapping Tee	<input checked="" type="checkbox"/>				
REMARKS							
Ran a total of 314' of 3/4" P.E. gas service line + caught 2 homes w/in it. An excess flow valve was installed at the tap.							

Signature	Jason Warner	Date	10-13-14
-----------	--------------	------	----------

NATURAL GAS MAIN AND SERVICE INSTALLATION RECORDS

Address	366 Mill Creek Rd		Apt#		City	Tompkinsville	City	Monroe	Time Received		Date Received	11-10-14
Customer Name	Anthony Poland					Phone#		Customer Account#				
Installer Name	Jason Warren / Marvin Anderson			Date Received		Date Installed	11-10-14					
Date Tested	11-10-14		Test Pressure psig	90 ps.		Test Medium	Natural Gas		Properly Purged	Yes	<input checked="" type="checkbox"/>	No
							Comp Air	<input checked="" type="checkbox"/>				
							Inert Gas					
Meter Set	Yes <input type="checkbox"/>	No <input checked="" type="checkbox"/>	Meter Coil		Meter Mfg#		Index Reading					

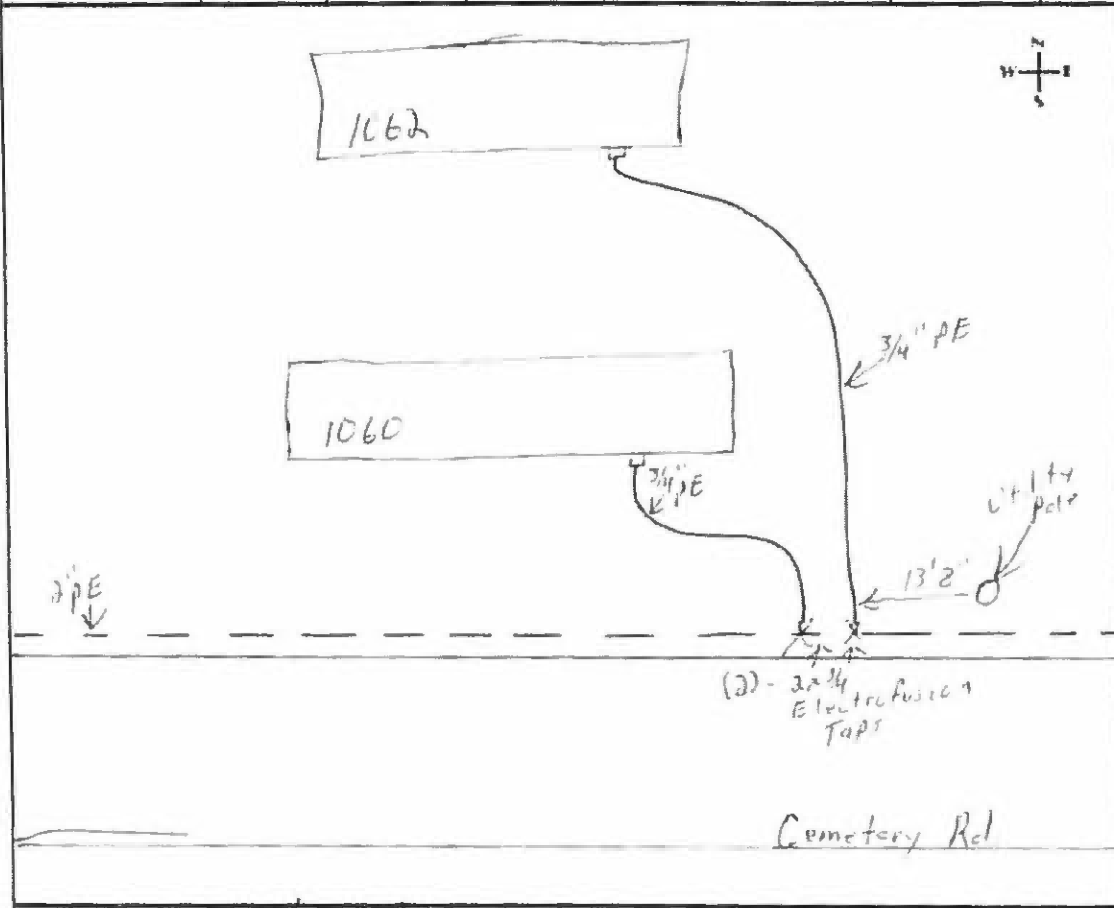


Meter Locked	Yes	<input checked="" type="checkbox"/>	No	Card Left	Yes		No
LOCATION							
Gas Main Location	Mill Creek Rd						
Mainline Valve Installed	Yes		No	<input checked="" type="checkbox"/>			
Service Location	Same						
Service Valve			Tapping Tee	<input checked="" type="checkbox"/>			
REMARKS							
Installed 28ft of 3/4" gas service line. Punched 21ft of l.o.e. Installed 2 y 3/4" electro-fuse tap, excess flow valve, riser, + lock valve. Line was tested @ 90 ps for 10 min. Meter has not been set at this time due to customer not having plumbing ready. Lock valve plugged + locked.							

Signature	Jason Warren					Date	11-10-14		
-----------	--------------	--	--	--	--	------	----------	--	--

NATURAL GAS MAIN AND SERVICE INSTALLATION RECORDS

Address	1060/1062 Cemetary Rd		Apt#		City	Tompkinsville	Cty	Monroe	Time Received		Date Received	11-10-14
Customer Name	Glen Howard / Brenda Howard.					Phone#		Customer Account#				
Installer Name	Marvin Andersen				Date Received				Date Installed	11-10-14		
Date Tested	11-10-14		Test Pressure psig	90 ps.		Test Medium	Natural Gas		Properly Purged	Yes	No <input checked="" type="checkbox"/>	
							Comp Air	<input checked="" type="checkbox"/>				
							Inert Gas					
Meter Set	Yes <input type="checkbox"/>	No <input type="checkbox"/>	Meter Cof#				Meter Mfg#				Index Reading	

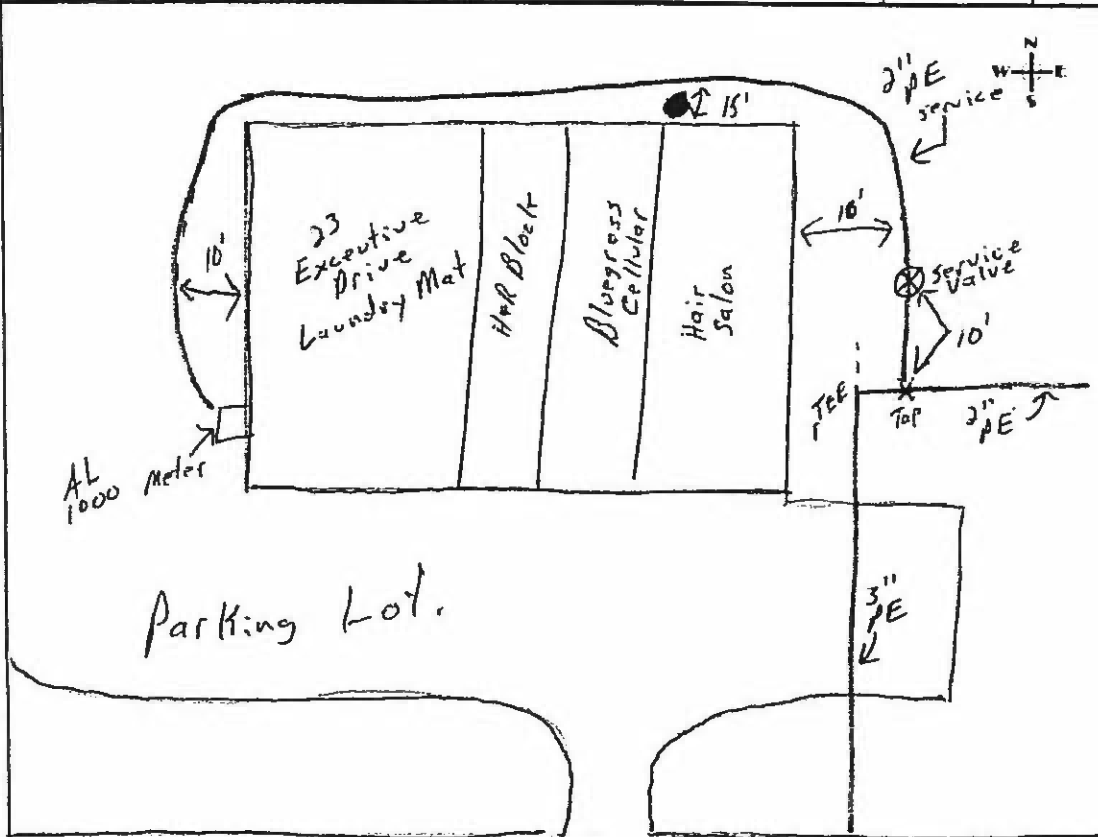


Meter Locked	Yes	No	Card Left	Yes	No
LOCATION					
Gas Main Location	Cemetary Rd				
Mainline Valve Installed	Yes	No	<input checked="" type="checkbox"/>		
Service Location					
Service Valve	Tapping Tee		<input checked="" type="checkbox"/>		
REMARKS					
Installed 2 taps w. th excess flow valves. Ran 190ft of 3/4 line to 1062 + 90ft of line to 1060. Installed a riser + lock valve on each. Each service was tested at 90 ps. for 10 minutes.					

Signature	Jason Warren				Date	11-10-14
-----------	--------------	--	--	--	------	----------

NATURAL GAS MAIN AND SERVICE INSTALLATION RECORDS

Address	23 Executive Dr.		Apt#		City	Tompkinsville	Cty	Monroe	Time Received		Date Received	
Customer Name	North Race Street Laundry Mat.					Phone#		Customer Account#				
Installer Name	Jason Warren / Marvin Anderson				Date Received				Date Installed			
Date Tested	12-11-14		Test Pressure psig	90 psi		Test Medium	Natural Gas		Properly Purged	Yes	<input checked="" type="checkbox"/>	No
							Comp Air	<input checked="" type="checkbox"/>				
							Inert Gas					
Meter Set	Yes <input checked="" type="checkbox"/>	No <input type="checkbox"/>	Meter Cof#				Meter Mfg#				Index Reading	0000

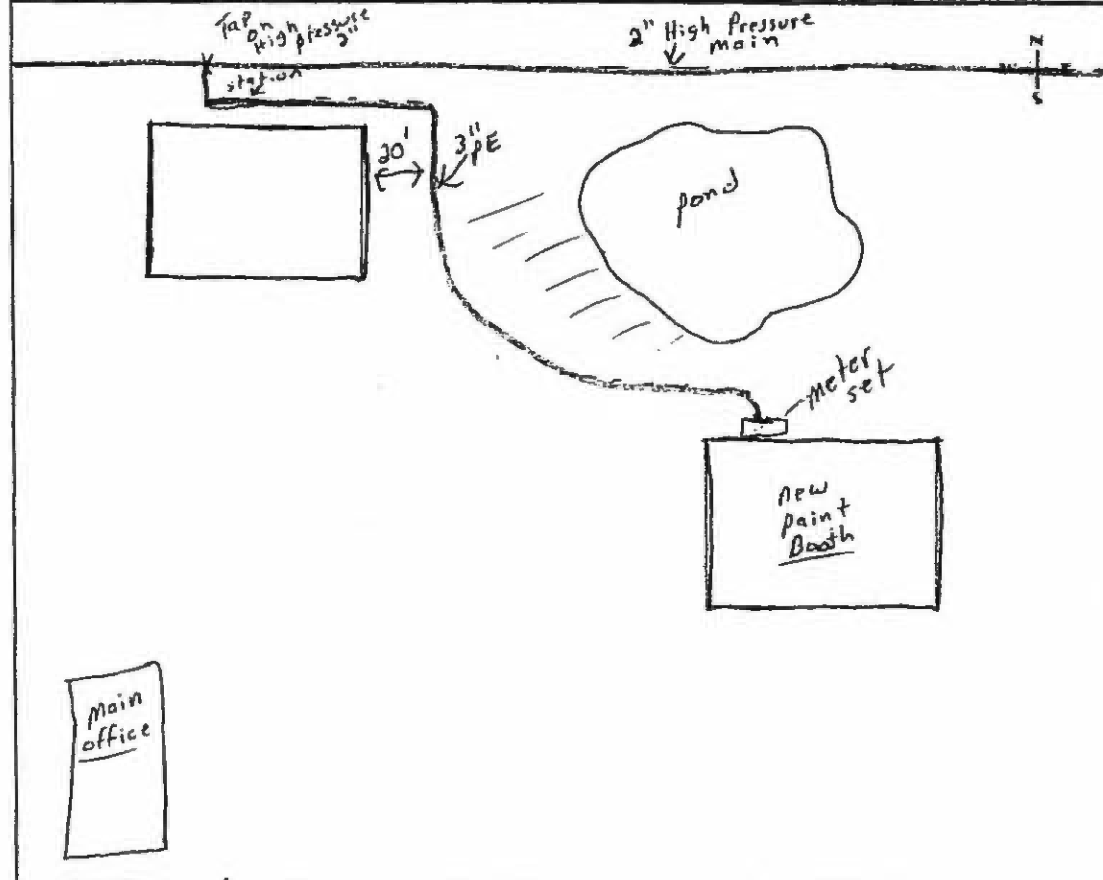


Meter Locked	Yes	<input checked="" type="checkbox"/>	No	Card Left	Yes		No
LOCATION							
Gas Main Location	Rt. side of building						
Mainline Valve Installed	Yes	<input checked="" type="checkbox"/>	No				
Service Location	23 Executive Dr.						
Service Valve		Tapping Tee	<input checked="" type="checkbox"/>				
REMARKS							
We were unsure where the 3" PE main goes. We tapped the 2" main & ran 480 ft of 2" PE. We tested the system at 90 psi for one hour. We then set the meter & made a tap. Also installed a 2" valve.							

Signature	Executive Dr Jason Warren					Date	12-11-14
-----------	------------------------------	--	--	--	--	------	----------

NATURAL GAS MAIN AND SERVICE INSTALLATION RECORDS

Address	711 W. 4th Street.	Apt#		City	Tombkinsville	City	Monroe	Time Received		Date Received	
Customer Name	Stephens Mfg.				Phone#		Customer Account#				
Installer Name	Justin Tucker				Date Received		Date Installed	12-17-14			
Date Tested	10-31-14	Test Pressure psig	90 psi		Test Medium	Natural Gas	Properly Purged	Yes	<input checked="" type="checkbox"/> No		
						Comp Air		<input checked="" type="checkbox"/>			
						Inert Gas					
Meter Set	Yes <input checked="" type="checkbox"/> No <input type="checkbox"/>	Meter Co#				Meter Mfg#			Index Reading	0000	

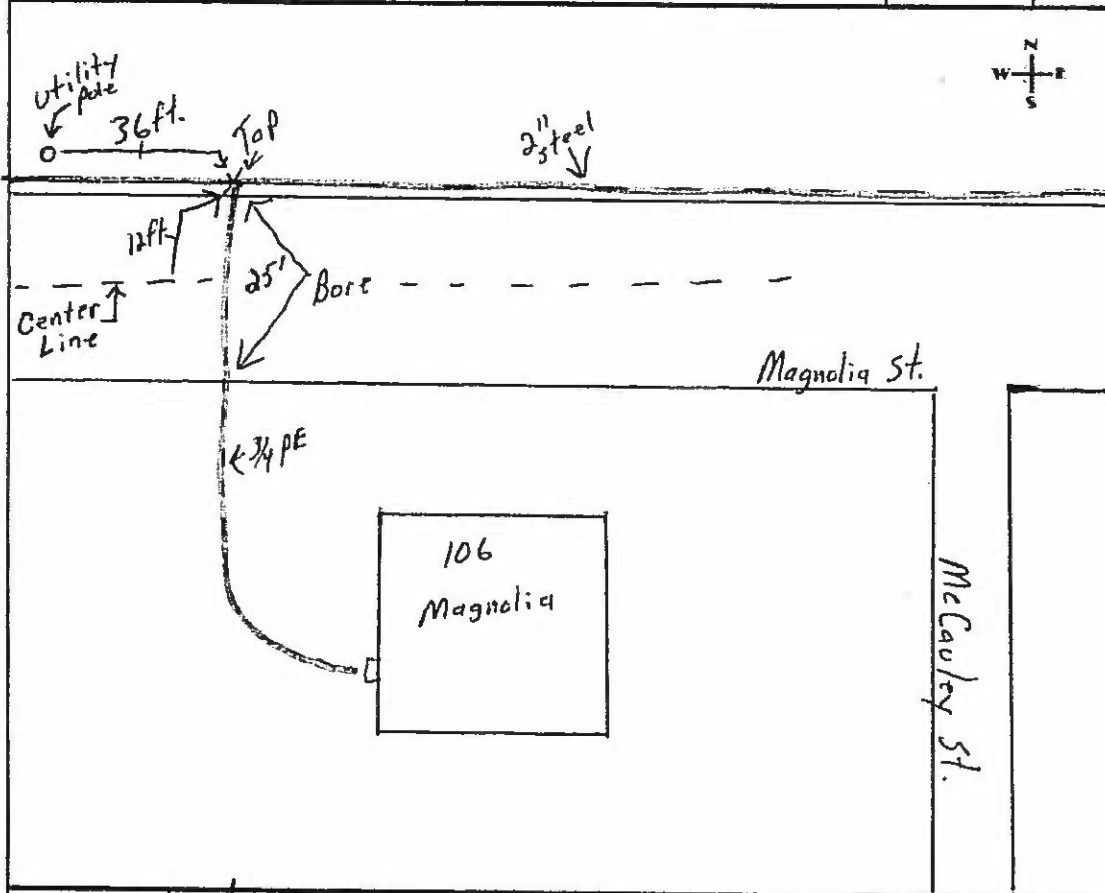


Meter Locked	Yes	<input checked="" type="checkbox"/> No	Card Left	Yes	No
LOCATION					
Gas Main Location	Back of property				
Mainline Valve Installed	Yes	<input checked="" type="checkbox"/> No			
Service Location	Paint Booth @ Stephens Mfg.				
Service Valve	<input checked="" type="checkbox"/>	Tapping Tee	<input checked="" type="checkbox"/>		
REMARKS					
Laid 328 ft of 3" PE. Made					
a 2x2 Hot top + built on above					
ground regulator station. to cut					
the pressure from 225 psi to					
40 psi. We then built a 3" meter set					
+ installed a rotary meter.					

Signature	Jason Warner	Date	12-17-14 completed
-----------	--------------	------	--------------------

NATURAL GAS MAIN AND SERVICE INSTALLATION RECORDS

Address	106 Magnolia St.		Apt#		City	Tompkinsville	Cty	Monroe	Time Received		Date Received		
Customer Name	Willis Murry					Phone#		Customer Account#					
Installer Name	Jeremy Janes				Date Received				Date Installed				
Date Tested	12-29-14		Test Pressure psig	90psi		Test Medium	Natural Gas		Properly Purged	Yes	<input checked="" type="checkbox"/> No		
							Comp Air	<input checked="" type="checkbox"/>					
							Inert Gas						
Meter Set	Yes <input checked="" type="checkbox"/>	No <input type="checkbox"/>	Meter Co#				Meter Mfg#				Index Reading		



Meter Locked	Yes	<input checked="" type="checkbox"/> No	Card Left	Yes	<input type="checkbox"/> No
LOCATION					
Gas Main Location	Magnolia St.				
Mainline Valve Installed	Yes	<input type="checkbox"/> No	<input checked="" type="checkbox"/>		
Service Location	106 Magnolia				
Service Valve		Tapping Tee	<input checked="" type="checkbox"/>		
REMARKS					
Laid 115' of 3/4" PE gas service line & made a 25 ft bore. Tapped a 2" steel gas main. Set meter.					

Signature	Jason Warr				Date	12-29-14
-----------	------------	--	--	--	------	----------

VISUAL INSPECTION OF MAINS AND SERVICE PIPELINES

Address	18 South Lakeview Drive	Location	
TYPE	CONDITION	CORROSION	COATING TYPE
Steel	Excellent	Localized	Millwrap
PL	✓ Good	General	Enamel
Cast Iron	Slight Pitting	Other	Ruskote
CSSI	Extreme Pitting	Pitting Depth	Oxidemp
Main	Hole/Voids		Xtrecat
Service	Graphitization		Mastic
Other	Bent		Cold Roll
	Broken		Hot Wrap
	Other		Heat Shrink

COATING CONDITION	SOIL TYPE	SOIL COMPOSITION	EXCAVATION
Good	✓ Rock	Dry	✓ Main Extension
Poor	Cinder	Wet/Swampy	Service Tap
Damaged	Clay	✓ Normal	Leak Repair
Other	Loam	Moister Range (3-5)	Re-routing
	Sand	Moister Range (5-8)	Third Party
	Alluvion		Abandonment
	Other		Deactivation
			Utility Theft
			Other

Description/Comments

18
5 Lakeview Dr

← Gas Meter

* Tap

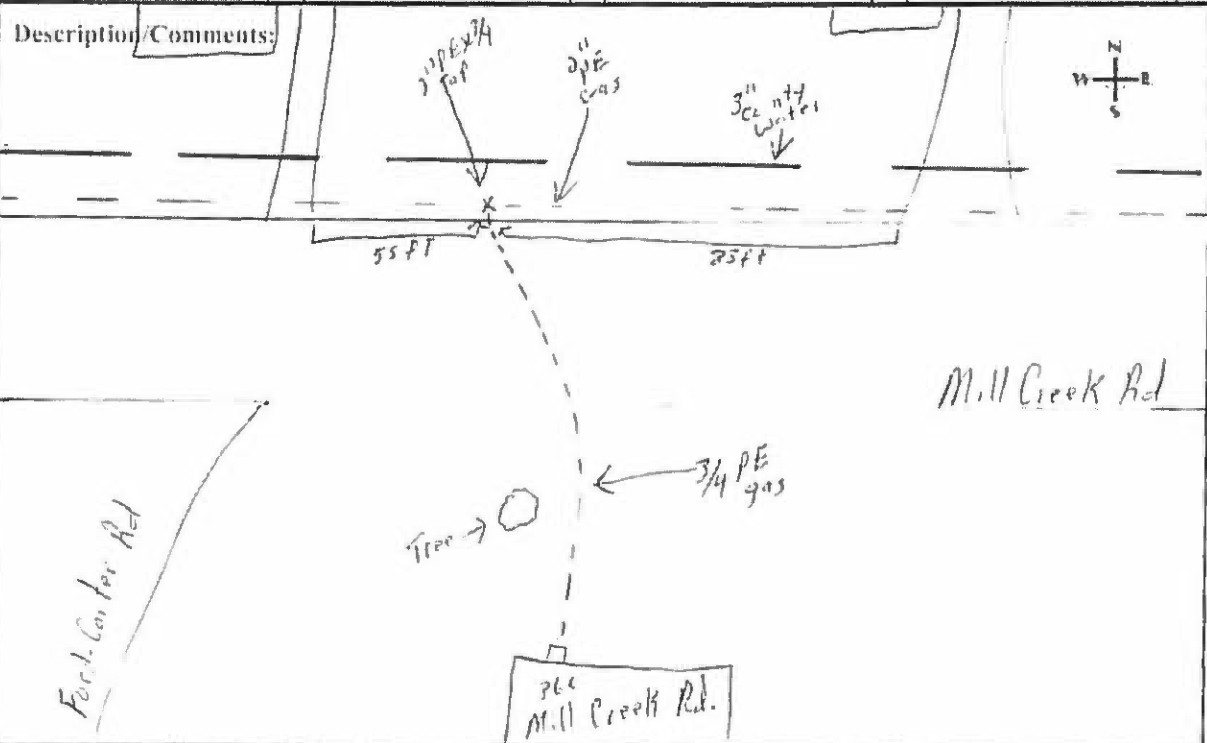
Lakeview Dr.

Name	Jason Warner	Date	11-4-14
------	--------------	------	---------

VISUAL INSPECTION OF MAINS AND SERVICE PIPELINES

Address	366 Mill Creek Rd		Location		
TYPE	CONDITION	CORROSION	COATING TYPE		
Steel	Excellent	Localized <input checked="" type="checkbox"/>	Millwrap		
PE	Good <input checked="" type="checkbox"/>	General	Enamel		
Cast Iron	Slight Pitting	Other	Ruskote		
CSSI	Extreme Pitting	Pitting Depth	Oxidemp		
Main	Hole/Voids		Ntrucoat		
Service	Graphitization		Mastic		
Other	Bent		Cold Roll		
	Broken		Hot Wrap		
	Other		Heat Shrink		

COATING CONDITION	SOIL TYPE	SOIL COMPOSITION	EXCAVATION		
Good	Rock <input checked="" type="checkbox"/>	Dry	Main Extension		
Poor	Clinder	Wet/Swampy	Service Tap		<input checked="" type="checkbox"/>
Damaged	Clay	Normal <input checked="" type="checkbox"/>	Leak Repair		<input checked="" type="checkbox"/>
Other	Loam	Moister Range (3-5)	Re-routing		
	Sand	Moister Range (5-8)	Third Party		
	Alluvion		Abandonment		
	Other		Deactivation		
			Utility Theft		
			Other		



Name	Jason W	Date	11-10-14
------	---------	------	----------

VISUAL INSPECTION OF MAINS AND SERVICE PIPELINES

Address	1060/1062 Cemetery Rd		Location	
TYPE	CONDITION	CORROSION	COATING TYPE	
Steel	Excellent	Localized	Millwrap	
PE	Good	General	Enamel	
Cast Iron	Slight Pitting	Other	Roskote	
CSSI	Extreme Pitting	Pitting Depth	Oxidemp	
Main	Hole/Voids		Ntrucoat	
Service	Graphitization		Mastic	
Other	Bent		Cold Roll	
	Broken		Hot Wrap	
	Other		Heat Shrink	

COATING CONDITION	SOIL TYPE	SOIL COMPOSITION	EXCAVATION	
Good	Rock	Dry	Main Extension	
Poor	Cloder	Wet/Swampy	Service Tap	
Damaged	Clay	Normal	Leak Repair	
Other	Loam	Moister Range (3-5)	Re-routing	
	Sand	Moister Range (5-8)	Third Party	
	Alluvion		Abandonment	
	Other		Deactivation	
			Utility Theft	
			Other	

Description/Comments:

Name	Jason W.	Date	11-16-14
------	----------	------	----------

Max Stephens

No Address

Uses

PO

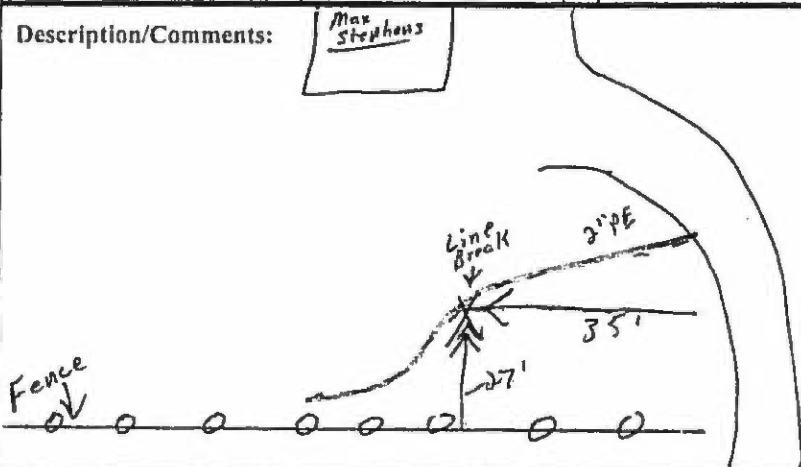
BDT

VISUAL INSPECTION OF MAINS AND SERVICE PIPELINES

Address		Old Mulkey Rd		Location			
TYPE		CONDITION		CORROSION		COATING TYPE	
Steel		Excellent		Localized	<input checked="" type="checkbox"/>	Millwrap	
PE		Good	<input checked="" type="checkbox"/>	General		Enamel	
Cast Iron		Slight Pitting		Other		Ruskote	
CSST		Extreme Pitting		Pitting Depth		Oxidemp	
Main		Hole/Voids				Xtrucoat	
Service		Graphitization				Mastic	
Other		Bent				Cold Roll	
		Broken				Hot Wrap	
		Other				Heat Shrink	
COATING CONDITION		SOIL TYPE		SOIL COMPOSITION		EXCAVATION	
Good		Rock	<input checked="" type="checkbox"/>	Dry		Main Extension	
Poor		Cinder		Wet/Swampy		Service Tap	
Damaged		Clay		Normal	<input checked="" type="checkbox"/>	Leak Repair	<input checked="" type="checkbox"/>
Other		Loam		Moister Range (3-5)		Re-routing	
		Sand		Moister Range (5-8)		Third Party	
		Alluvion				Abandonment	
		Other				Deactivation	
						Utility Theft	
						Other	

Description/Comments:

Max Stephens



old Mulkey Rd.

Name

Jason W.

Date


11-17-14

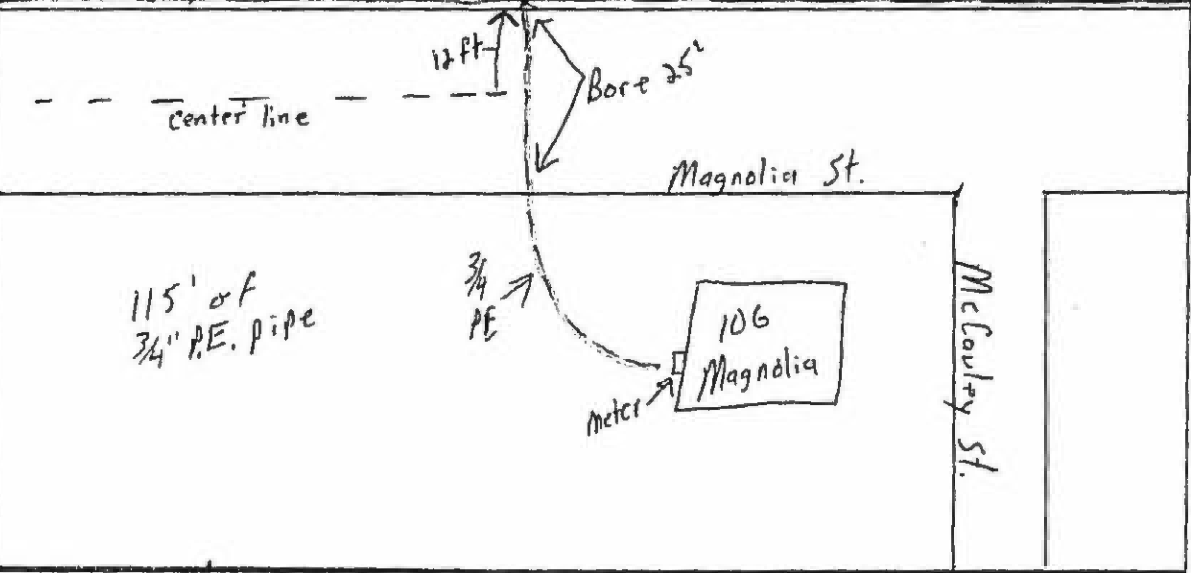
VISUAL INSPECTION OF MAINS AND SERVICE PIPELINES

Address	106 Magnolia		Location	
TYPE	CONDITION	CORROSION	COATING TYPE	
Steel	✓ Excellent	Localized	Milliwrap	✓
PE	Good	✓ General	Enamel	
Cast Iron	Slight Pitting	Other	Roskote	
CSST	Extreme Pitting	Pitting Depth	Oxidemp	
Main	Hole/Voids		Xtrucoat	
Service	Graphitization		Mastic	
Other	Bent		Cold Roll	
	Broken		Hot Wrap	
	Other		Heat Shrink	

COATING CONDITION	SOIL TYPE	SOIL COMPOSITION	EXCAVATION	
Good	✓ Rock	Dry	Main Extension	
Poor	Cinder	Wet/Swampy	Service Tap	✓
Damaged	Clay	✓ Normal	✓ Leak Repair	
Other	Loam	Moister Range (3-5)	Re-routing	
	Sand	Moister Range (5-8)	Third Party	
	Alluvion		Abandonment	
	Other		Deactivation	
			Utility Theft	
			Other	

Description/Comments:





Name	Jason W.	Date	12-29-14
------	----------	------	----------

VISUAL INSPECTION OF MAINS AND SERVICE PIPELINES

Address	Intersection of <i>Old Mulkey Rd</i> & <i>J. Proffitt Rd</i>			Location	
TYPE	CONDITION	CORROSION	COATING TYPE		
Steel	Excellent	✓ Localized	Millwrap		
PE	✓ Good	General	Enamel		
Cast Iron	Slight Pitting	Other	Roskote		
CSST	Extreme Pitting	Pitting Depth	Oxidemp		
Main	Hole/Voids		Xtrucoat		
Service	Graphitization		Mastic		
Other	Bent		Cold Roll		
	Broken		Hot Wrap		
	Other		Heat Shrink		

COATING CONDITION	SOIL TYPE	SOIL COMPOSITION	EXCAVATION		
Good	✓ Rock	Dry	Main Extension		
Poor	Cinder	Wet/Swampy	✓ Service Tap		
Damaged	Clay	Normal	Leak Repair		
Other	Loam	Moister Range (3-5)	Re-routing		
	Sand	Moister Range (5-8)	Third Party		
	Alluvion		Abandonment		
	Other		Deactivation		
			Utility Theft		
			Other		

Description/Comments:

2" PE

Old Mulkey Rd

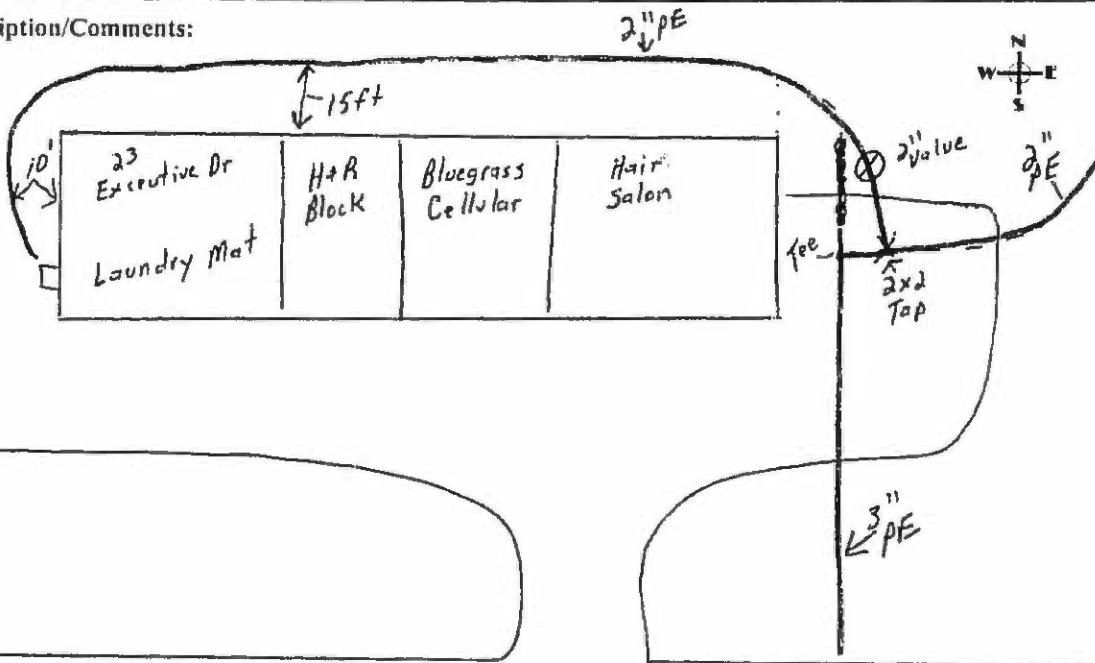
Name	<i>Jason Warner</i>	Date	<i>12-2-14</i>
------	---------------------	------	----------------

VISUAL INSPECTION OF MAINS AND SERVICE PIPELINES

Address 23 Executive Dr.		Location	
TYPE	CONDITION	CORROSION	COATING TYPE
Steel	Excellent	✓ Localized	Millwrap
PE	✓ Good	General	Enamel
Cast Iron	Slight Pitting	Other	Roskote
CSST	Extreme Pitting	Pitting Depth	Oxidemp
Main	Hole/Voids		Xtrucoat
Service	Graphitization		Mastic
Other	Bent		Cold Roll
	Broken		Hot Wrap
	Other		Heat Shrink

COATING CONDITION	SOIL TYPE	SOIL COMPOSITION	EXCAVATION
Good	✓ Rock	Dry	Main Extension
Poor	Cinder	Wet/Swampy	Service Tap
Damaged	Clay	✓ Normal	Leak Repair
Other	Loam	Moister Range (3-5)	Re-routing
	Sand	Moister Range (5-8)	Third Party
	Alluvion		Abandonment
	Other		Deactivation
			Utility Theft
			Other

Description/Comments:



Name

Jason W.

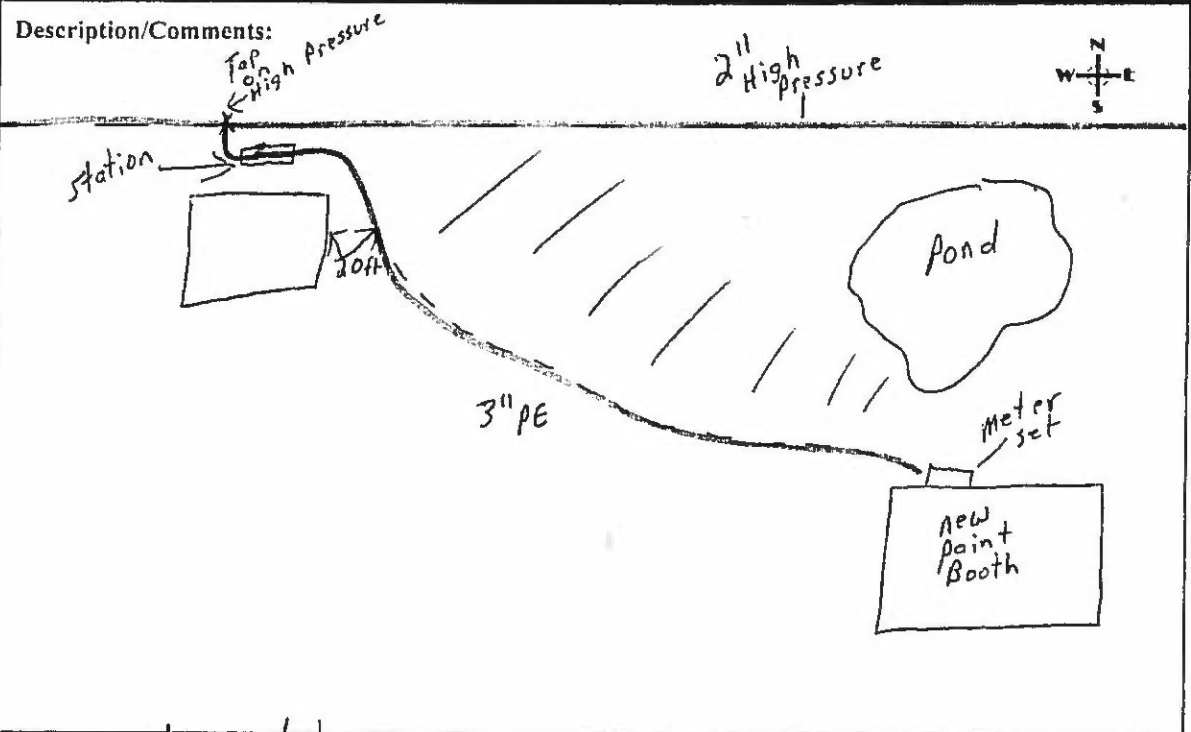
Date

12-11-14

VISUAL INSPECTION OF MAINS AND SERVICE PIPELINES

Address		711 W. 4th Street		Location		Stephens Mfg.	
TYPE		CONDITION		CORROSION		COATING TYPE	
Steel		✓ Excellent		✓ Localized		Millwrap	
PE		Good		General		Enamel	
Cast Iron		Slight Pitting		Other		Roskote	
CSST		Extreme Pitting		Pitting Depth		Oxidemp	
Main		Hole/Voids				Xtrucoat	
Service		Graphitization				Mastic	
Other		Bent				Cold Roll	✓
		Broken				Hot Wrap	
		Other				Heat Shrink	

COATING CONDITION		SOIL TYPE		SOIL COMPOSITION		EXCAVATION	
Good		✓ Rock		Dry		Main Extension	
Poor		Cinder		Wet/Swampy		Service Tap	✓
Damaged		Clay		✓ Normal		✓ Leak Repair	
Other		Loam		Moister Range (3-5)		Re-routing	
		Sand		Moister Range (5-8)		Third Party	
		Alluvion				Abandonment	
		Other				Deactivation	
						Utility Theft	
						Other	



Name: Jason W. Date: 12-17-14

MECHANICAL FITTING FAILURE

GPS Loca		City/Town	Tompkinsville				State	KY	Failure Date	10-2-14				
Mechanical Fitting Failure	Slab Fitting		Nut Follower		Bolted		<input checked="" type="checkbox"/>	Compression		Clamp (temporary)				
Type of Mechanical Fitting	Service		Main Tee		Tapping Tee		Transition Fitting		Riser					
	Coupling		Adapter		Valve		Sleeve		End Cap		Other <input checked="" type="checkbox"/>			
Gas Leak Location	Aboveground		Belowground		Inside <input checked="" type="checkbox"/>		Outside		Main-to-Main <input checked="" type="checkbox"/>		Other <input checked="" type="checkbox"/>			
	Main-to-Service		Service-to-Service		Meter Center		Tap		Other					
Other Remarks:	Belts on fitting were very loose.													
Year Installed	?		Year Mfg.	?		Decade Installed			Historical Date			Micro-film		
Manufacturer	?		Part/Model #	?		Lot Number			Other Attributes					
Material/Composite	Steel		Plastic Type		Plastic/Steel <input checked="" type="checkbox"/>		Brass		Cast Steel		Aluminum		Other	
Specify Material Being Joined (First Pipe Information)														
Nominal (Inches)	.25	.50	.75	1.0	1.25	1.50	1.75	2.0	3.0	4.0 <input checked="" type="checkbox"/>	6.0	8.0	10.0	12.0
Material	Steel		Cast/Wrought Iron		Ductile Iron		Copper		Plastic <input checked="" type="checkbox"/>		Stainless Steel		Other	
Type Plastic	Polyethylene (PE)		<input checked="" type="checkbox"/> Polyvinyl Chloride (PVC)		Cross-link Polyethylene (PEX)		Polybutylene (PB)		Polypropylene (PP)		Acrylonitrile Butadiene Styrene		Polyamide (PA)	
Specify Material Being Joined (Second Pipe Information)														
Nominal (Inches)	.25	.50	.75	1.0	1.25	1.50	1.75	2.0	3.0	4.0 <input checked="" type="checkbox"/>	6.0	8.0	10.0	12.0
Unit	<input checked="" type="checkbox"/> IPS		CTS		NPS		OTHER		Remarks:					
Material	Steel		Cast/Wrought Iron		Ductile Iron		Copper		Plastic		<input checked="" type="checkbox"/> Stainless Steel		Other	
Type Plastic	Polyethylene (PE)		<input checked="" type="checkbox"/> Polyvinyl Chloride (PVC)		Cross-link Polyethylene (PEX)		Polybutylene (PB)		Polypropylene (PP)		Acrylonitrile Butadiene Styrene		Polyamide (PA)	
Cause of Leak	Corrosion		Natural Forces		Excavation Damage		Outside Force		Welds/Fusion		Equipment		Operator Error <input checked="" type="checkbox"/>	
Was there Thermal Expansion/Contraction?	YES		NO		<input checked="" type="checkbox"/> Excavation Damage?		At the Time of Leak Discovery		Previous/prior to Leak Discovery					
Leak Due To	Construction		Installation		Material(s)		Design		Seismic Events		Subversive		Other <input checked="" type="checkbox"/>	
Record notification number, this number will be auto generated by PHMSA for each submitted mechanical fitting failure report PHMSA F-100.1 2														
Submitted By	Jason Waver										Date	10-8-14		

ODOROMET READINGS

Tompkinsville, Ky

June 2014

Percent of Gas in Air (1% Scale)

LOCATION	Initial Reading	Actual Reading	Date
210 Jim Bryant Ave.	.78	.73	6-20-14
Christ The King Church	.42	.35	6-20-14
Carpet Tile + More "Executive Dr."	.74	.66	6-20-14
Lyons Chapel Church "Hwy 100"	.77	.75	6-20-14

Remarks:

Test By Marvin Anderson + Casey Chelf

September 2014

Tompkinsville, Ky

Percent of Gas in Air (1% Scale)

LOCATION	Initial Reading	Actual Reading	Date
Christ THE King Church	.72	.62	9-19-14
Floor & CARPET and more 24 Executive Drive	.68	.62	9-19-14
51 Old Glasgow RD	.86	.75	9-19-14
8195 County House RD	.80	.75	9-19-14

Remarks:

Test By *Max Ad*

9-19-14

ODOROME READINGS

November 2014

Tompkinsville, Ky

Percent of Gas in Air (1% Scale)

LOCATION	Initial Reading	Actual Reading	Date
1176 OLD Glasgow RD	.85	.81	11-7-14
8195 County House RD	.60	.50	11-7-14
BLUEGRASS CELLULAR	.84	.80	11-7-14
Christ THE King church CELINA RD	.54	.45	11-7-14
Remarks:			
Test By	Marvin Anderson		