

421 West Main Street  
Frankfort, KY 40601  
(502) 223-3477  
(502) 223-4124 Fax

April 29, 2016

Mark R. Overstreet  
(502) 209-1219  
(502) 223-4387 FAX  
moverstreet@stites.com

**HAND DELIVERED**

Aaron D. Greenwell  
Acting Executive Director  
Public Service Commission  
211 Sower Boulevard  
P.O. Box 615  
Frankfort, KY 40602-0615

**RECEIVED**

**APR 29 2016**

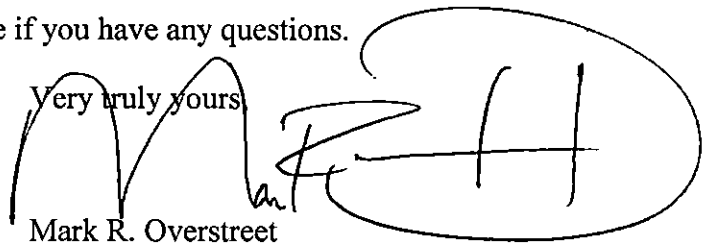
**PUBLIC SERVICE  
COMMISSION**

**RE: Case No. 2011-00450**

Dear Mr. Greenwell:

Please find enclosed and accept for filing one paper copy and one electronic copy (on CD) of the reliability report mandated by the April 1, 2014 and May 30, 2013 Orders in the above proceeding.

Please do not hesitate to contact me if you have any questions.

Very truly yours,  
  
Mark R. Overstreet

MRO

# KENTUCKY PUBLIC SERVICE COMMISSION

## Electric Distribution Utility Annual Reliability Report

---

### SECTION 1: CONTACT INFORMATION

UTILITY NAME	Kentucky Power Company
REPORT PREPARED BY	Everett G. Phillips
E-MAIL ADDRESS OF PREPARER	<a href="mailto:egphillips@aep.com">egphillips@aep.com</a>
PHONE NUMBER OF PREPARER	(606) 929-1463

---

### SECTION 2: REPORT YEAR

CALENDAR YEAR OF REPORT	2015
-------------------------	------

---

### SECTION 3: MAJOR EVENT DAYS

$T_{MED}$	29.141
FIRST DATE USED TO DETERMINE $T_{MED}$	1-Jan-10
LAST DATE USED TO DETERMINE $T_{MED}$	31-Dec-14
NUMBER OF MED IN REPORT YEAR	3

---

NOTE: Per IEEE 1366  $T_{MED}$  should be calculated using the daily SAIDI values for the five prior years. If five years of data are not available, then utilities should use what is available until five years are accumulated.

---

### SECTION 4: SYSTEM RELIABILITY INFORMATION AND RESULTS

#### System Wide Information

Total Customers	168,545	Total Circuits	221
-----------------	---------	----------------	-----

#### Excluding MED

	5 Year Average		Reporting Year
SAIDI	473.4	SAIDI	467.8
SAIFI	2.498	SAIFI	2.464

#### Including MED

	5 Year Average		Reporting Year
SAIDI	1047.5	SAIDI	1089.2
SAIFI	2.962		2.879

#### Notes:

- 1) All duration indices (SAIDI) are to be reported in units of minutes.
  - 2) Reports are due on the first business day of April of each year
  - 3) Reports cover the calendar year ending in the December before the reports are due.
  - 4) IEEE 1366 (latest version) is used to define SAIDI, SAIFI and  $T_{MED}$
-

# KENTUCKY PUBLIC SERVICE COMMISSION

---

## Electric Distribution Utility Annual Reliability Report

---

### SECTION 5: CIRCUIT REPORTING

#### (CIRCUITS WITH SAIDI AND/OR SAIFI EXCEEDING 5 YEAR AVERAGE)

#### (CIRCUIT NUMBERS SHOULD BE REPORTED EXCLUDING MED)

#### CIRCUIT #1:

1. SUBSTATION NAME AND NUMBER
2. SUBSTATION LOCATION (COUNTY-ROAD-TOWN)
3. CIRCUIT NAME AND NUMBER
4. CIRCUIT LOCATION (TOWN-ROAD-GENERAL AREA)
5. TOTAL CIRCUIT LENGTH (MILES)
6. CUSTOMER COUNT FOR THIS CIRCUIT
7. DATE OF LAST CIRCUIT TRIM (VM)
8. LIST OUTAGE CAUSES FOR CIRCUIT ALONG WITH PERCENTAGE OF TOTAL OUTAGE  
NUMBERS REPRESENTED BY EACH CAUSE
9. CIRCUIT 5 YEAR AVERAGE (SAIDI)
10. REPORTING YEAR (SAIDI)
11. CIRCUIT 5 YEAR AVERAGE (SAIFI)
12. REPORTING YEAR (SAIFI)
13. CORRECTIVE ACTION PLAN

#### REPEAT INFORMATION FOR EACH CIRCUIT EXCEEDING ITS 5 YEAR AVERAGE FOR SAIDI AND/OR SAIFI

***Please see Attachment 1 for Section 5: Circuit Reporting***

Note: Circuits sorted according to reporting year SAIDI

# KENTUCKY PUBLIC SERVICE COMMISSION

## Electric Distribution Utility Annual Reliability Report

---

Additional pages may be attached as necessary  
SECTION 6: VEGETATION MANAGEMENT PLAN REVIEW

**See attached copy of Kentucky Power Company 2015 Vegetation Management Report in conformity with Paragraph 8(d) of the Settlement Agreement, Appendix A to the Commission's June 22, 2015 order in Case No. 2014-00396.**

---

### SECTION 7: UTILITY COMMENTS

The Company continues to see positive results from its vegetation management program, and evidence suggests a more consistent positive reliability trend in the future. In 2015, four months (January, August, November, and December) had SAIDI minutes lower than those same months during the previous five years. Weather events now require more sustained and higher wind speeds to produce damage to the Company's facilities.

Excluding major events as defined by IEEE standard 1366, Kentucky Power's overall 2015 system performance for System Average Interruption Duration Index (SAIDI) and System Average Interruption Frequency Index (SAIFI) were lower than the previous five-year average. The 2015 SAIFI and SAIDI indices were 2.464 and 467.8, respectively. The previous five-year averages for the SAIFI and SAIDI indices were 2.498 and 473.4, respectively.

The Company's daily MED threshold remains high. As a result, weather events continue to make year-to-year comparisons less instructive than they might otherwise be. By 2019, when the 2012 Derecho will be eliminated from the trailing five-year average, and Kentucky Power anticipates it will have migrated to a five-year vegetation management cycle, the Company is hopeful that that the daily MED will be normalized so that year-to-year comparisons of SAIDI will be more useful.

Kentucky Power Company remains committed to its reliability programs and vegetation

COMMONWEALTH OF KENTUCKY  
BEFORE THE PUBLIC SERVICE COMMISSION



RECEIVED

APR 1 2016

PUBLIC SERVICE  
COMMISSION

Three Vegetation  
Management  
workers performing  
Task 2 work on  
Olive Hill – Globe  
Circuit in Carter  
County

2015 DISTRIBUTION VEGETATION MANAGEMENT  
REPORT OF KENTUCKY POWER COMPANY  
IN CONFORMITY WITH PARAGRAPH 8(d)  
OF THE SETTLEMENT AGREEMENT,  
APPENDIX A TO THE COMMISSION'S JUNE 22, 2015  
ORDER IN CASE NO. 2014-00396

March 31, 2016

In accordance with the Public Service Commission's Order dated June 22, 2015, in Case No. 2014-00396, Kentucky Power provides the following report regarding its Distribution Vegetation Management ("VM") Program for the 2015 calendar year:

## **Introduction**

The Commission's June 22, 2015 Order in Case No. 2014-00396 approved, with certain modifications unrelated to this report, the Settlement Agreement among Kentucky Power Company, Kentucky Industrial Utility Customers, Inc., and the Kentucky School Boards Association in that case ("Settlement Agreement"). Paragraph 8 of the Settlement Agreement modified the Company's existing VM Program. Generally, paragraph 8 of the Settlement Agreement provided for the following modifications to the then existing VM Program:

- Extended the period to perform the initial re-clearing of the Company's distribution right-of-way through 2018 ("Task 1"). Because the extension of the period for completing Task 1 was finalized subsequent to the Company's October 1, 2014 filing of its 2015 VM Program, the Task 1 mileage targets for 2015 approved as part of the Settlement Agreement are slightly different from those included in the October 1, 2014 VM Program Plan for 2015. In this report the 2015 Task 1 mileage targets are those provided for in the Settlement Agreement;<sup>1</sup>
- Implemented an interim program for the re-clearing of those portions of the Company's distribution right-of-way that were initially re-cleared beginning July 2010. ("Task 2"). The Settlement Agreement provides Task 2 is to be completed June 30, 2019;
- Provided for the initiation of a five-year cycle for VM Program maintenance re-clearing ("Task 3") beginning July 1, 2019;
- Maintained the Task 1 VM Program operation and maintenance and capital spending requirements approved by the Commission in Case No. 2009-00459;
- Provided an additional \$10,655,900 in revenue to fund the Task 2-related operation and maintenance activities required under the Settlement Agreement.

---

<sup>1</sup> The Company exceeded the 2015 Task 1 mileage targets contained in the October 1, 2014 filing and the Settlement Agreement.

➤ Provided modified total spending requirements for the years 2015-2023. These requirements will decrease beginning in 2019 with the completion of Task 1 and Task 2 and the initiation of Task 3;

➤ Provided an \$11,780,408 reduction of annual base rates beginning July 1, 2019 for those customer classes funding the VM Program;

➤ Established a one-way balancing account for annual deviations of total VM Program expenditures from the \$27,661,060 included in annual base rates beginning July 1, 2015.

### **2015 Work Performed And Expenditures**

During calendar 2015, Kentucky Power exceeded both its VM expenditure and VM mileage cleared targets.

#### **A. 2015 Distribution VM Expenditures**

The total O&M spending target for calendar year 2015 was \$22,327,777. Total O&M expenditures for the VM program were \$23,067,891 or \$740,114 (3.3%) more than the target amount.

2015 Task 1 expenditures were budgeted at \$8,618,983 for the first six months and 17,237,965 for the calendar year. Actual 2015 Task 1 O&M expenditures were \$9,447,174 (\$828,191 above target) during the first six months and \$18,932,943 (\$1,694,978 above target) for the calendar year.

Task 2 was initiated July 1, 2015. 2015 Task 2 O&M expenditures were budgeted at \$5,089,812. Actual 2015 Task 2 O&M expenditures were \$4,134,948 (\$954,864 less than budget).

Kentucky Power's 2015 Task 2 expenditures were less than budgeted because it was able to make greater use of the less expensive "local" crews to perform Task 2 work than originally projected. These crews, which originally were scheduled to perform Task 1 work during the second half of 2015, became available to perform Task 2 work because of the greater than projected amount of Task 1 work completed during the first half of the year. This in turn was due to the higher level of Task 1 expenditures during the first half of the year. In addition, the

Task 1 work is moving to some of the less heavily overgrown, and less expensive to clear, circuits.

Notwithstanding the lower than budgeted level of Task 2 expenditures, Kentucky Power exceeded its 2015 Task 2 mileage target.

The 2015 forestry capital spending target was \$2,371,472; forestry capital expenditures for calendar year 2015 were \$5,699,748 (\$3,328,276 above target). These additional capital funds were utilized to remove trees larger than 18 inches in diameter, widening rights-of-way, and for tree growth regulator applications (soil injections).

The 2015 total capital and O&M expenditures for the VM Program were \$28,767,639. This exceeded the 2015 expenditure target for O&M and forestry capital by \$4,068,390.

Please see Table 1 for further information on VM expenditures.

Table 1: Kentucky Power Budgeted Expenses for 2015 Revised VM Program						
Targeted Task VM Program	Jan - Jun		July - Dec		Year 2015	
	Budget	Actual	Budget	Actual	Budget	Actual
Task 1	\$ 8,618,982	\$ 9,447,174	\$ 8,618,983	\$ 9,485,769	\$ 17,237,965	\$ 18,932,943
Task 2	-	-	\$ 5,089,812	\$ 4,134,948	\$ 5,089,812	\$ 4,134,948
Task 3	-	-	-	-	-	-
<b>VM Program Dollars</b>	<b>\$8,618,982</b>	<b>\$9,447,174</b>	<b>\$13,708,795</b>	<b>\$13,620,717</b>	<b>\$22,327,777</b>	<b>\$23,067,891</b>

**B. 2015 VM Mileage Cleared**

During calendar year 2015 the Company was projected to perform 987 miles of Task 1 work. The 2015 target for Task 2 work, which commenced July 1, 2015, was 371 miles. During 2015 Kentucky Power performed 1436 miles of Task 1 work (449 miles or 45% above target) and 434 miles of Task 2 work (63 miles or 17% above target). The VM plan also included 2,011 acres to be sprayed in 2015, and 1,967 acres (97.8%) were sprayed.

Since the beginning of the VM program in 2010, Kentucky Power has completed approximately 70% of the Task 1 work.



Further information concerning 2015 VM mileage cleared is presented in Table 2:

<b>Table 2: Targeted/Completed Mileage for Vegetation Management Program</b>		
<b>Distribution Vegetation Work Plan</b>	<b>Year - 2015</b>	
	<b>Targeted Mileage</b>	<b>Completed Mileage</b>
<b>Task 1</b>	<b>987</b>	<b>1436</b>
<b>Task 2</b>	<b>371</b>	<b>434</b>
<b>Task 3</b>	<b>-</b>	<b>-</b>
<b>Veg Program Miles</b>	<b>1358</b>	<b>1870</b>

Since it began July 2010, Kentucky Power's VM program has trimmed 395,888 trees, cleared 9,366 acres of brush, sprayed 12,607 acres to control vegetation, and removed 1,338,402 trees.

**C. 2015 Distribution VM Work by Circuit**

Attachment 1 details the Task 1 VM work and expenditures by circuit. Attachment 2 similarly reports the 2015 (July 1 to December 31) Task 2 VM work and expenditures by circuit. Both attachments provide the number of miles of circuit completed, acres of brush cut, acres of brush sprayed, tree growth regulator (soil injection), trees removed, and trees trimmed.

O&M and capital expenditures are not accounted for on a circuit-by-circuit basis. The costs in Attachment 1 and 2 represent the total O&M and Capital expenditures for each circuit. Also unallocated on a circuit-by-circuit basis are: Internal Labor & Fleet, unscheduled hotspot maintenance, trouble restoration work, tree ticket investigation, contract foresters, tree contractor's field supervision, incentive program for tree contractor's employees, and contract clerical work expenses.

**D. Measures Of Improvement In System Reliability (SAIFI, CAIDI, SAIDI, and CMI)**

Table 3 provides total system reliability indices for Kentucky Power's overall system for 2010 (when the VM Program began) through December 31, 2015. Table 4 provides reliability indices limited to Tree Inside of Right-of-Way outages for the same period.

The indices included in both Table 3 and Table 4 are System Average Interruption Frequency Index (“SAIFI”), the Customer Average Interruption Duration Index (“CAIDI”), and the System Average Interruption Duration Index (“SAIDI”) for each reporting period. Excluded from the calculation of the indices are major events as defined by IEEE standard 1366.

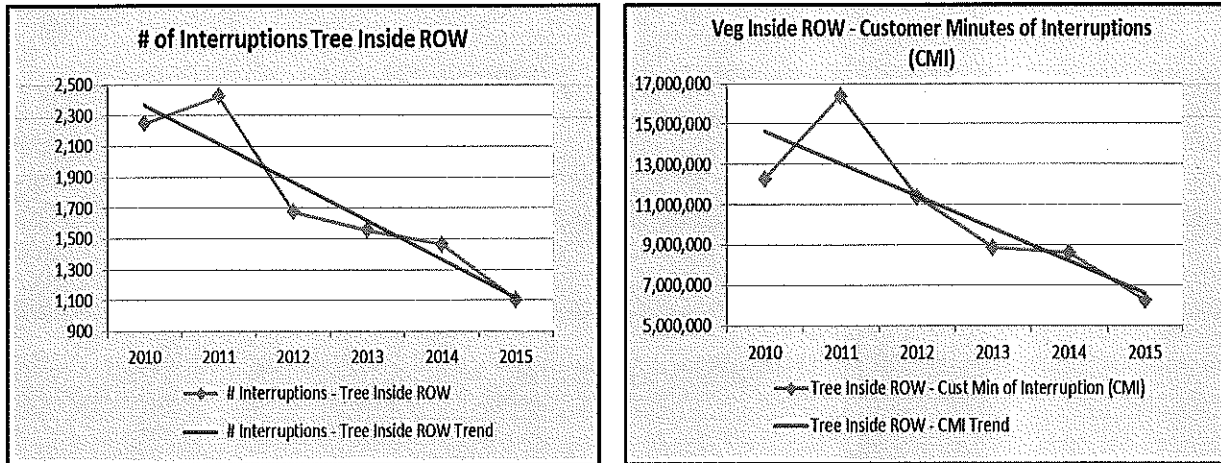
<b>Table 3: Six Year Reporting Indices for all Outage Cause Codes</b>			
<b>Year</b>	<b>SAIFI</b>	<b>CAIDI</b>	<b>SAIDI</b>
<b>2010</b>	2.4701	169.39	418.4
<b>2011</b>	3.0854	195.38	602.84
<b>2012</b>	2.4174	189.46	457.99
<b>2013</b>	2.1442	178.49	382.71
<b>2014</b>	2.3736	212.88	505.29
<b>2015</b>	2.4639	189.85	467.77

<b>Table 4: Six Year Reporting Indices for Tree Inside Right-of-Way Outage Cause Codes</b>			
<b>YEAR</b>	<b>Tree Inside Right-of-Way SAIFI</b>	<b>Tree Inside Right-of-Way CAIDI</b>	<b>Tree Inside Right-of-Way SAIDI</b>
<b>2010</b>	0.3707	190.7	70.68
<b>2011</b>	0.4192	227.4	95.32
<b>2012</b>	0.2562	258.8	66.31
<b>2013</b>	0.2815	184.3	51.88
<b>2014</b>	0.2154	236.3	50.89
<b>2015</b>	0.1782	207.6	37.00

Table 4 in particular is useful in assessing the efficacy of the Company’s VM Program because the VM Program focuses on inside right-of-way vegetation management. The 2015 Tree Inside Right-Of-Way SAIFI, CAIDI, and SAIDI metrics are 38%, 5%, and 40%, respectively, below the average Tree Inside Right-Of-Way SAIFI, CAIDI, and SAIDI metrics for the period 2010-2015.

Since the VM Program began in July 2010, the annual number of tree inside ROW outages (excluding major event days) has been reduced by approximately 51% from 2,248 to 1,102; the

annual number of customer minutes of interruption associated with these events has been reduced by approximately 49% from 12,247,282 to 6,236,943.



**E. VM Program-To-Date Expenditures**

Beginning with the commencement of the VM Program in July 2010, Kentucky Power committed to expend \$99,898,620 on VM O&M through December 31, 2015. Through that period the Company expended \$101,342,631 or \$1,444,011 (1.4%) more than its commitment. Kentucky Power’s VM Program capital spending commitment during the same period was \$11,220,000. It exceeded that target by 57% (\$6,447,154).

Kentucky Power Company continues to review its VM Program processes to permit it to transition in a safe, cost-efficient, and effective manner to a five-year cycle on or before July 1, 2019.

**F. Balancing Account**

Under paragraph 8(e)(ii) of the Settlement Agreement, a one-way balancing account was established beginning July 1, 2015. The account, which requires the Company to make \$27,661,060 in VM O&M expenditures during each July 1 through June 30 period (“Vegetation Management Year”), will continue until base rates are next established. The balancing account

will track any shortfall or over-expenditure in Vegetation Management Year VM O&M expenditures.

When Company base rates are next established any cumulative shortfall in VM O&M expenditures will be refunded to customers or used to reduce the Company's revenue requirement. The Company may not recover any cumulative over-expenditure.

The Company's VM O&M expenditures through December 31, 2015 (50% of the Vegetation Management Year) were \$13,620,717. These expenditures represents 49.2% of the July 1, 2015 through June 30, 2016 Vegetation Management Year requirement. Kentucky Power anticipates meeting the \$27,661,060 target by the close of the Vegetation Management Year.

**G Revised Kentucky Power Company's 2016 Distribution VM Plan**

Kentucky Power revised its 2016 Vegetation Management Plan (filed September 30, 2015) to reflect anticipated efficiency improvements and the fact that in 2015 the Company was able to re-clear 512 circuit miles scheduled for re-clearing in 2016 or 2015-2016. The revised plan will continue to focus on full circuit re-clearing (Task 1) and interim re-clearing (Task 2).

The revised 2016 Kentucky Power Distribution VM Plan projected expenditures for the three districts in its service territory for Task 1 and Task 2 are shown in Table 5. The revised 2016 Kentucky Power Distribution targeted mileage by district is shown in Table 6.

<b>Table 5: 2016 Kentucky Power Company Revised Distribution VM O&amp;M Forestry Plan (Task 1 &amp; Task 2) - Summary</b>				
<b>ACTIVITY</b>	<b>Total O&amp;M</b>	<b>Ashland</b>	<b>Hazard</b>	<b>Pikeville</b>
Total Circuit Re-clearing	\$24,573,850	\$7,457,217	\$4,142,475	\$12,974,158
Total Spray	\$1,200,000	\$288,000	\$432,000	\$480,000
Contract Foresters	\$310,993	\$103,664	\$103,664	\$103,665
KPI INCENTIVE PROGRAM - Contractor Field Personnel	\$586,774	\$195,591	\$195,591	\$195,592
INTERNAL - Existing KY Forestry Staff	\$556,002	\$185,334	\$155,334	\$215,334
Unscheduled/Reactive Maintenance	\$436,979	\$35,000	\$239,066	\$162,913
<b>Total O&amp;M</b>	<b>\$27,664,598</b>	<b>\$8,264,806</b>	<b>\$5,268,130</b>	<b>\$14,131,662</b>
<b>Forestry Capital</b>	<b>\$2,433,956</b>			
<b>Total KYPCO Forestry Budget</b>	<b>\$30,098,554</b>			

<b>Table 6: 2016 Kentucky Power Revised Distribution Targeted Mileage</b>			
<b>District</b>	<b>Planned Miles Initial Re-clear Task 1</b>	<b>Planned Miles Interim Re-clear Task 2</b>	<b>Total VM Target</b>
<b>Ashland</b>	394	210	604
<b>Hazard</b>	221	255	476
<b>Pikeville</b>	585	306	891
<b>Totals</b>	<b>1200</b>	<b>771</b>	<b>1971</b>

See Attachment 3 to this report for the 2016 revised Distribution VM Plan on a circuit-by-circuit basis. Adjustments to the Plan (Task 1 and Task 2) include: completion of circuit miles planned in 2015 that were not completed, additional circuit miles and circuits added where targets were exceeded in 2015, areas where reliability problems have increased, and forestry review of proposed rights-of-ways to be re-cleared.

The Commission’s June 22, 2015 Order in Case No. 2014-00396 directed Kentucky Power to seek leave of the Commission prior to “altering any proposed spending that deviates by 10 percent or more from the total amount or within each Division as set forth in an annual filing on September 30.”<sup>2</sup> The revised 2016 Distribution VM Plan proposes to increase total O&M spending by \$3,538 (0.0128%) and total forestry capital spending by \$911,631 (59.88%). By district, Kentucky Power proposes to modify O&M spending under the revised plan as follows: expenditures in the Ashland district will increase \$117,789 (1.45%); expenditures in the Hazard district will decrease by \$1,498,375 (-22.14%); and expenditures in the Pikeville district will increase \$1,384,124 (10.86%).

The proposed shift in spending between the three districts will permit Kentucky Power to maintain the Task 2 mileage targets by district, maintain the Task 1 mileage target for the Hazard district, and increase the Task 1 mileage targets for the Ashland (50 miles or 14.53%) and Pikeville (164 miles or 38.95%) districts . The shift in spending will permit the Company to deploy its resources efficiently, move the individual districts to similar states of completion of

<sup>2</sup> Order, *In the Matter of: Application of Kentucky Power Company For: (1) A General Adjustment Of Its Rates For Electric Service; (2) An Order Approving Its 2014 Environmental Compliance Plan; An Order Approving Its Tariffs And Riders; And (4) An Order Granting All Other Required Approvals And Relief*, Case No. 2014-00396 at 77 (Ky. P.S.C. June 22, 2015)

Task 1 work, and begin the Task 3 five year-cycle in each of the three districts at approximately the same time.

Kentucky Power will promptly file its request for leave to deviate from its September 2015 plan.

2015 KY POWER FORESTRY CIRCUIT HISTORY				Costs that were not allocated to a circuit include; internal labor & fleet costs, some unscheduled hotspot maintenance, trouble restoration work, tree ticket investigation, contract clerical work, contract foresters, tree contractors' field supervision, and incentive program for tree contractor's employees.								
Task 1 - Ashland District												
Circuit data in BOLD represent Full-Circuit Reclearing												
Circuit Number	Circuit Name	Cost (includes O&M and Capital)	Total Line Miles	Reclearing Miles Planned	Reclearing Miles Complete	Brush Cut (acres)	Brush Spray (acres)	Tree Growth Regulator	Tree Removal	Tree Trim	COMMENTS	
2206403	South Neal - Whites Creek	\$8,856.02	38.8	0.0	20.0	0.0	31.5		4	70	Started Full Circuit Re-clear - completion in 2016	
3000292	Big Sandy - Burnaugh North	\$894,819.60	84.4	84.4	84.5	52.3	133.1		9,382	4,731	Completed Full Circuit Re-clear	
3000302	Bellefonte - Flatwoods	\$78,288.57	3.2	0.0	3.2	0.0	0.0		739	197	Completed Full Circuit Re-clear	
3000304	Bellefonte - Town Center	\$27,870.24	2.7	2.7	2.7	0.0	0.0		616	64	Completed Full Circuit Re-clear	
3000901	Highland - Russell	\$302,040.13	24.3	26.4	24.3	5.0	0.0		1,375	1,060	Completed Full Circuit Re-clear	
3000902	Highland - Flatwoods	\$215,388.06	13.9	13.9	13.9	7.5	0.0		2,128	1,290	Completed Full Circuit Re-clear	
3000903	Highland - Wurtland	\$191,247.17	13.4	13.4	13.4	2.3	0.0		1,150	634	Completed Full Circuit Re-clear	
3001201	Howard Collins - 13th St.	\$207,286.39	13.2	13.2	13.2	2.5	0.0		832	976	Completed Full Circuit Re-clear	
3001203	Howard Collins - Floyd St.	\$144,260.84	11.1	11.7	11.1	2.3	0.0		563	735	Completed Full Circuit Re-clear	
3001402	Louisa - High Bottom	\$167,205.43	13.0	0.0	10.0	0.0	0.0		25	1	Started Full Circuit Re-clear - completion in 2016	
3002101	10th Street - 5th St.	\$1,139.67	0.6	0.6	0.6	0.1	0.0		23	4	Completed Full Circuit Re-clear	
3002103	10th Street - 12th St.	\$103,636.07	6.9	6.8	6.8	3.5	0.0		692	585	Completed Full Circuit Re-clear	
3002104	10th Street - 10-3	\$50,694.40	3.0	3.6	3.0	0.2	0.0		84	172	Completed Full Circuit Re-clear	
3002105	10th Street - Midtown	\$18,515.92	3.7	3.9	3.7	0.0	0.0		14	19	Completed Full Circuit Re-clear	
3002106	10th Street - Front Street	\$8,876.82	1.8	1.8	1.8	0.4	0.0		258	15	Completed Full Circuit Re-clear	
3003701	Coalton - US 60 W	\$1,024,919.00	88.7	45.2	75.0	24.5	44.6		8,755	4,576	Started Full Circuit Re-clear - completion in 2016	
3004301	Siloam - Distribution	\$165,334.00	22.7	5.0	5.0	1.5	0.0		1,428	808	Finish Full circuit Re-clear - carry over from 2014	
3007904	Busseyville - Torchlight	\$436,705.67	98.3	98.3	97.0	69.9	125.3		12,535	4,149	Completed Full Circuit Re-clear	
3007905	Busseyville - Mattie	\$165,443.52	91.0	0.0	23.0	0.0	0.0		2,105	839	Started Full Circuit Re-clear - completion in 2016	
3008003	47th Street - Catlettsburg	\$260,186.68	26.8	28.0	26.8	9.9	15.6		3,425	1,223	Completed Full Circuit Re-clear	
3010602	Russell - Bear Run	\$0.00	13.0	0.0	3.0	0.0	28.9		457	126	Started Full Circuit Re-clear - completion in 2016	
3010603	Russell - Ashland Oil	\$4,491.86	1.1	0.0	1.1	0.0	0.0		29	6	Completed Full Circuit Re-clear	
3110901	Wurtland - Wurtland	\$5,136.75	2.9	2.9	2.9	0.0	0.0		5	16	Completed Full Circuit Re-clear	
3116102	Grayson - Dixie Park	\$279,382.62	33.5	0.0	20.5	0.0	0.0		1,353	1,162	Started Full Circuit Re-clear - completion in 2016	
3117601	Princess - Meade Station	\$357,805.41	45.8	0.0	34.2	16.2	0.0		3,449	2,065	Started Full Circuit Re-clear - completion in 2016	
3000303	Bellefonte - Bellefonte	\$980.99	56.2	0.0	1.9	0.0	0.0		11	0	Quality of Service Work	
3000801	Hayward - Halderman	\$13,481.04	117.0	0.0	1.0	0.0	0.0		405	26	Quality of Service Work	
3000802	Hayward - Lawton	\$728.31	36.3	0.0	0.0	0.0	0.0		0	0	Work Planning for spray - deferred	
3001002	Hitchins - Willard	\$114,620.17	152.0	0.0	0.0	38.4	0.0		1,387	0	Widening	
3001003	Hitchins - Grayson	\$954.83	48.4	0.0	0.0	0.0	0.0		1	0	Capital removal	
3001004	Hitchins - EK Road	\$323.84	31.4	0.0	0.0	0.0	0.0		13	0	Quality-of-Service Work	
3001101	Hoods Creek - Summit	\$219.99	22.7	0.0	0.0	0.0	0.0		2	0	Quality-of-Service Work	
3001102	Hoods Creek - Rural	\$2,104.08	47.0	0.0	0.0	0.2	0.0		30	0	Quality-of-Service Work	
3001401	Louisa - City	\$2,574.35	10.0	0.0	0.0	0.0	0.0		6	9	Quality-of-Service Work	
3003702	Coalton - Cannonsburg	\$13,390.76	23.3	0.0	0.0	0.2	17.8		75	15	Quality of Service work; Ground Spray application	
3003703	Coalton - Trace Creek	\$362.40	52.5	0.0	0.0	0.0	0.0		0	2	Quality-of-Service Work	
3007903	Busseyville - Louisa	\$3,202.53	44.0	0.0	0.0	0.0	0.0		83	11	Quality-of-Service Work	
3007908	Busseyville - Wabridge	\$150,040.76	94.0	0.0	0.0	3.8	207.5		239	135	Ground and Aerial Spray; Widening	
3008701	Cannonsburg - Cannonsburg	\$37,445.61	63.0	0.0	0.0	0.0	0.0		91	9	Widening	
3008702	Cannonsburg - Rt. 3	\$1,779.95	100.0	0.0	0.0	0.2	0.0		94	18	Danger tree removal	
3010601	Russell - Kenwood	\$960.53	20.7	0.0	0.0	0.0	0.0		25	0	Quality-of-Service Work	
3110902	Wurtland - Greenup	\$1,984.09	50.8	0.0	0.0	0.0	2.3		0	0	Quality-of-Service Work	
3110903	Wurtland - Rt. 503	\$1,877.74	46.0	0.0	0.0	0.0	0.0		42	0	Quality-of-Service Work	
3116101	Grayson - Lansdowne	\$37,385.86	36.1	0.0	0.0	0.0	0.0		653	20	Widening	
<b>ASHLAND DISTRICT Totals</b>		<b>\$5,503,458.85</b>		<b>362.0</b>	<b>503.7</b>	<b>240.9</b>	<b>608.8</b>	<b>0</b>	<b>54,618</b>	<b>25,669</b>		

2015 KY POWER FORESTRY CIRCUIT HISTORY				Costs that were not allocated to a circuit include; internal labor & fleet costs, some unscheduled hotspot maintenance, trouble restoration work, tree ticket investigation, contract clerical work, contract foresters, tree contractors' field supervision, and incentive program for tree contractor's employees.							
Task 1 - Hazard District											
Circuit data in BOLD represent Full-Circuit Re-clearing											
Circuit Number	Circuit Name	Cost (includes O&M and Capital)	Total Line Miles	Re-clearing Miles Planned	Re-clearing Miles Complete	Brush Cut (acres)	Brush Spray (acres)	Tree Growth Regulator	Tree Removal	Tree Trim	COMMENTS
3303901	Leslie - Hyden	\$977,121.65	88.2	88.2	85.6	62.3	11.9		20,985	3,082	Completed Full Circuit Re-clear
3308601	Collier - Upper Rockhouse	\$129,377.66	37.4	28.4	28.4	22.6	0.8		1,770	689	Completed Full Circuit Re-clear
3309103	Whitesburg - Cowan	\$383,980.22	43.1	34.9	43.1	56.8	0.1		2,265	1,118	Completed Full Circuit Re-clear
3309302	Vicco - Jeff	\$283,107.03	84.7	19.0	23.2	46.2	33.7		7,149	1,014	Started Full Circuit Re-clear
3309902	Slemp - Leatherwood	\$248,130.06	71.3	0.0	18.0	0.0	1.6		7,766	769	Started Full Circuit Re-clear
3310501	Haddix - Quicksand	\$1,084,048.07	202.0	42.2	55.0	125.9	4.4		12,899	1,393	Started Full Circuit Re-clear
3310502	Haddix - Canoe	\$137,354.32	125.0	0.0	16.0	0.3	4.2		2,777	561	Started Full Circuit Re-clear
3401302	Fleming - McRoberts	\$148,426.89	30.2	0.0	10.0	0.0	0.4		881	471	Started Full Circuit Re-clear
3420001	Softshell - Vest	\$250,302.22	59.0	0.0	18.0	1.8	43.5		5,671	654	Started Full Circuit Re-clear
3420002	Softshell - Leburn	\$509,919.04	49.5	28.3	49.5	62.6	45.8		8,188	2,539	Completed Full Circuit Re-clear
3300601	Bluegrass - Walkertown	\$529.85	29.0	0.0	0.0	0.0	0.0		1	0	Quality-of-Service Work
3300602	Bluegrass - Hazard	\$11,802.63	11.4	0.0	0.0	1.3	0.0		352	4	Widening
3301101	Chavies - Chavies	\$25,475.26	69.1	0.0	0.0	0.9	2.4		188	7	Quality-of-Service Work; Widening
3301401	Combs - Combs	\$8,642.34	9.0	0.0	0.0	0.0	0.0		16	0	Quality-of-Service Work
3301402	Combs - Airport Gardens	\$79,835.24	43.0	0.0	0.0	0.0	2.8		739	0	Widening
3301701	Daisy - Leatherwood	\$9,297.23	88.0	0.0	0.0	0.0	1.1		136	0	Ground Spray; Widening
3303902	Leslie - Woolon	\$167,320.44	134.0	0.0	0.0	6.2	309.7		149	39	Ground Spray; Widening
3303903	Leslie - Hals Fork	\$8,983.75	76.0	0.0	0.0	0.0	6.1		0	0	Ground Spray - Basal
3307301	Bulan - Ayr Hiner	\$1,324.43	54.0	0.0	0.0	0.0	1.7		0	0	Ground Spray - Basal
3307302	Bulan - Ajax Dwarf	\$1,476.27	40.0	0.0	0.0	0.0	1.8		0	0	Ground Spray - Basal
3308002	Jackson - Panbow	\$26,013.31	31.6	0.0	0.0	0.0	2.6		2	0	Ground Spray - Basal
3308401	Beckham - Hindman	\$58,305.18	102.0	0.0	0.0	0.0	8.9		477	0	Widening; Ground Spray
3308402	Beckham - Carr Creek	\$68,951.71	111.0	0.0	0.0	0.0	0.0		918	26	Widening
3308502	Bonnyman - Hazard	\$5,369.12	43.4	0.0	0.0	0.0	3.4		0	0	Ground Spray - Basal
3308503	Bonnyman - Big Creek	\$8,256.23	84.0	0.0	0.0	0.0	2.0		61	0	Ground Spray - Basal; Widening
3308602	Collier - Lower Rockhouse	\$8,244.25	66.0	0.0	0.0	0.0	1.2		60	9	Widening
3308603	Collier - Smoot Creek	\$57,660.03	81.0	0.0	0.0	0.4	40.4		192	15	Ground Spray; Widening
3309001	Jeff - Boone Lodge	\$13,526.82	5.0	0.0	0.0	0.0	0.6		159	20	Widening
3309002	Jeff - Jeff	\$16,514.28	5.7	0.0	0.0	0.0	0.3		14	3	Widening
3309003	Jeff - Viper	\$3,556.50	43.5	0.0	0.0	0.0	1.8		0	0	Ground Spray - Basal
3309101	Whitesburg - Whitesburg	\$882.98	10.0	0.0	0.0	0.0	0.0		3	0	Quality-of-Service Work
3309301	Vicco - Red Fox	\$7,824.94	48.5	0.0	0.0	1.2	0.0		113	20	Widening
3311101	Stinnett - Redbird	\$5,463.95	121.0	0.0	0.0	0.0	3.5		1	0	Ground Spray - Basal
3311102	Stinnett - Beech Fork	\$2,720.78	10.0	0.0	0.0	0.0	3.3		0	0	Ground Spray - Basal
3311103	Stinnett - Wendover	\$2,463.70	38.3	0.0	0.0	0.0	2.4		0	0	Ground Spray - Basal
3311401	Reedy - Deane	\$8,842.35	44.5	0.0	0.0	0.0	14.5		0	0	Ground Spray - Basal
3311701	Shanrock - Shanrock	\$33,266.25	54.0	0.0	0.0	0.0	12.1		0	0	Ground Spray - Basal
3312201	Engle - Industrial Park	\$15,039.97	4.1	0.0	0.0	0.0	32.9		18	0	Ground Spray; Widening
3312202	Engle - Grapevine	\$91,644.86	101.2	0.0	0.0	0.0	146.5		1	0	Ground Spray
3312901	Jenkins - Kona	\$2,585.83	28.0	0.0	0.0	0.0	0.2		6	0	Quality-of-Service Work
3312902	Jenkins - Jenkins	\$1,999.55	23.8	0.0	0.0	0.0	0.1		0	3	Quality-of-Service Work
3401301	Fleming - Neon	\$4,951.64	21.0	0.0	0.0	0.0	0.6		17	0	Quality-of-Service Work
3409503	Burdino - Jenkins	\$1,838.44	8.2	0.0	0.0	0.0	0.3		7	4	Quality-of-Service Work
<b>HAZARD DISTRICT Totals</b>		<b>\$4,880,156.08</b>		<b>241.0</b>	<b>348.8</b>	<b>378.5</b>	<b>749.5</b>	<b>0.0</b>	<b>73,969.0</b>	<b>12,440.0</b>	



2015 KY POWER FORESTRY CIRCUIT HISTORY				Costs that were not allocated to a circuit include: internal labor & fleet costs, some unscheduled hotspot maintenance, trouble restoration work, tree ticket investigation, contract clerical work, contract foresters, tree contractors' field supervision, and incentive program for tree contractor's employees.							
Task 1 - Pikeville District											
Circuit data in BOLD represent Full-Circuit Re-clearing											
Circuit Number	Circuit Name	Cost (includes O&M and Capital)	Total Line Miles	Re-clearing Miles Planned	Re-clearing Miles Complete	Brush Cut (acres)	Brush Spray (acres)	Tree Growth Regulator	Tree Removal	Tree Trim	COMMENTS
3200204	Barrenshe - Pounding Mill	\$217,908.77	16.0	9.0	16.0	19.7	0.0		2,915	683	Completed Full Circuit Re-clear
3401102	Falcon - Salyersville	\$323,715.68	44.0	0.0	43.0	56.3	0.0		3,636	1,358	Completed Full Circuit Re-clear
3401103	Falcon - Burning Fork	\$471,130.90	72.0	66.0	72.0	111.7	0.1		7,025	2,141	Completed Full Circuit Re-clear
3402603	Keyser - Mullins	\$329,713.23	30.0	30.0	30.0	34.3	0.0		2,590	1,195	Completed Full Circuit Re-clear
3403001	Pikeville - City	\$242,523.44	23.9	23.9	11.0	0.0	0.0		889	197	Started Full Circuit Re-clear - completion in 2016
3403003	Pikeville - Cedar Creek	\$492,755.36	28.0	28.0	28.0	0.5	1.2		3,384	657	Completed Full Circuit Re-clear
3403201	Beaver Creek - Ligon	\$819,562.42	80.0	53.0	58.0	42.1	44.6		8,404	1,740	Completed Full Circuit Re-clear
3404002	Spring Fork - Single Phase	\$84,809.16	11.0	7.9	11.0	26.8	0.0		2,943	127	Completed Full Circuit Re-clear
3407102	Topmost - Caney	\$2,130.26	4.4	4.4	0.0	0.0	0.0		0	0	Full Circuit Re-clear - deferred
3408303	Coleman - Peter Creek	\$1,050,715.02	40.0	39.7	40.0	56.1	2.7		14,058	3,057	Completed Full Circuit Re-clear
3409304	Coleman - Calloway	\$928,445.66	36.0	0.0	36.0	31.5	0.0		14,052	2,316	Completed Full Circuit Re-clear
3409302	Kenwood - Auxler	\$384,466.11	41.6	41.6	39.0	68.3	0.0		5,959	1,868	Started Full Circuit Re-clear - completion in 2016
3410602	E. Prestonsburg - Lancer	\$261,061.42	25.4	25.4	25.0	36.5	0.0		5,127	1,130	Completed Full Circuit Re-clear
3411401	Dewey - Inez A	\$451,131.69	171.0	0.0	27.5	65.1	0.6		5,546	1,452	Started Full Circuit Re-clear - completion in 2016
3411801	Johns Creek - Meta	\$1,840,905.02	167.0	40.7	80.1	136.5	11.5		26,190	3,411	Started Full Circuit Re-clear
3411802	Johns Creek - Raccoon	\$394,116.82	84.0	0.0	25.7	0.0	0.0		4,522	655	Started Full Circuit Re-clear - completion in 2016
3413401	Garrett - Garrett	\$355,970.94	38.0	38.0	38.0	67.1	0.0		6,069	1,396	Completed Full Circuit Re-clear
3451201	Beehide - Beehide	\$66,305.47	5.4	5.4	5.4	13.2	0.0		1,381	25	Completed Full Circuit Re-clear
2150103	Sprigg - Sprigg	\$1,680.04		0.0	0.0	0.0	1.8		0	0	Ground Spray
3150501	Borderland - Nolan A	\$635.31		0.0	0.0	0.0	0.0		12	0	Widening
3150502	Borderland - Chaffaroy	\$3,616.30		0.0	0.0	1.0	0.0		137	0	Quality-of-Service Work
3200301	Belfry - Belfry	\$17,533.19		0.0	0.0	2.6	0.0		189	0	Quality-of-Service Work
3200302	Belfry - Toler	\$4,775.95		0.0	0.0	0.3	0.0		73	0	Quality-of-Service Work
3202201	Lovely - Lovely A	\$67,027.36		0.0	0.0	0.0	45.7		0	1	Ground Spray
3202202	Lovely - Wolf Creek	\$103,762.28		0.0	0.0	0.3	38.3		320	62	Ground Spray, carry-over from 2014, work complete
3202203	Lovely - Mt. Sterling	\$61,248.71		0.0	0.0	0.0	36.9		1	0	Ground Spray
3400101	Allen - Distribution	\$526.20		0.0	0.0	0.0	0.0		10	0	Quality-of-Service Work
3400301	Betsy Layne - Mud Creek	\$2,593.15		0.0	0.0	0.0	0.0		23	8	Quality-of-Service Work
3400302	Betsy Layne - Tram	\$7,286.21		0.0	0.0	0.2	0.0		61	6	Quality-of-Service Work
3400303	Betsy Layne - Harold	\$4,682.33		0.0	0.0	0.0	0.0		38	1	Quality-of-Service Work
3400601	Burton - Bevinsville	\$45,460.23		0.0	0.0	0.0	43.7		0	0	Ground Spray
3400602	Burton - Wheelwright	\$55,884.37		0.0	0.0	0.0	62.0		0	0	Ground Spray
3400701	Draffin - Belcher	\$1,099.41		0.0	0.0	0.0	0.0		2	0	Quality-of-Service Work
3400901	Elkhorn City - City	\$53,562.21		0.0	0.0	0.0	60.3		3	0	Ground Spray
3401001	Elwood - Dorton	\$99,038.80		0.0	0.0	0.0	0.0		320	0	Widening
3401702	Henry Clay - Regina	\$39,271.37		0.0	0.0	0.0	50.2		6	0	Ground Spray
3401801	Index - Distribution	\$25,817.87		0.0	0.0	0.0	0.0		329	26	Widening
3401802	Index - Hospital	\$966.06		0.0	0.0	0.0	0.0		8	0	Quality-of-Service Work
3402002	Keyser - Stonecoal	\$199.43		0.0	0.0	0.0	0.0		9	0	Quality-of-Service Work
3402202	McKinney - Gibson	\$58,505.83		0.0	0.0	0.0	80.6		31	1	Ground Spray
3402801	Painstville - City	\$1,034.00		0.0	0.0	0.0	0.0		1	0	Quality-of-Service Work
3403202	Beaver Creek - Price	\$56,357.76		0.0	0.0	0.0	18.0		2	0	Ground Spray
3403701	Russell Fork - Little Beaver	\$734.19		0.0	0.0	0.0	0.0		3	0	Quality-of-Service Work
3403801	Second Fork - Distribution	\$2,969.00		0.0	0.0	0.0	0.0		90	0	Quality-of-Service Work
3407101	Topmost - Dema	\$8,517.59		0.0	0.0	0.1	0.0		115	1	Quality-of-Service Work
3408103	Salisbury - Martin	\$3,728.72		0.0	0.0	0.0	0.0		15	5	Quality-of-Service Work
3408402	Klmpar - Grapevine	\$5,760.77		0.0	0.0	0.0	0.0		75	7	Quality-of-Service Work
3409003	West Paintsville - Plaza	\$846.46		0.0	0.0	0.0	0.0		0	6	Quality-of-Service Work
3409301	Kenwood - W. Van Lear	\$2,366.12		0.0	0.0	0.0	0.0		3	0	Quality-of-Service Work
3409303	Kenwood - Hager Hill	\$461.87		0.0	0.0	0	0		3	0	Quality-of-Service Work
3410503	South Pikeville - Hospital	\$15,431.54		0.0	0.0	0	0		0	0	Planning for ground spray
3410601	E. Prestonsburg - Prestonsburg	\$8,034.72		0.0	0.0	0.0	0.0		12	0	Quality-of-Service Work
3411901	Fords Branch - Shelby	\$1,208.07		0.0	0.0	0.0	0.0		10	1	Quality-of-Service Work
3411902	Fords Branch - Robinson Ck	\$1,858.64		0.0	0.0	0.0	0.0		3	0	Quality-of-Service Work
3412901	Weeksbury - Distribution	\$47,924.14		0.0	0.0	0.1	48.6		25	0	Ground Spray
3413402	Garrett - Lackey	\$2,911.21		0.0	0.0	0.0	0.0		3	4	Quality-of-Service Work
3414501	Consol - Coal Co	\$6,110.66		0.0	0.0	0.8	0.0		138	33	Quality-of-Service Work
3417601	New Camp - South Side	\$36,433.96		0.0	0.0	0.0	17.5		0	0	Ground Spray
3420102	Mayo Trail - Euclid	\$12,712.41		0.0	0.0	0.0	0.0		161	4	Quality-of-Service Work
<b>PIKEVILLE DISTRICT Totals</b>		<b>\$9,587,379.00</b>		<b>413.0</b>	<b>585.7</b>	<b>771.1</b>	<b>662.3</b>	<b>0.0</b>	<b>117,002</b>	<b>23,562</b>	
<b>KY POWER Task 1 Totals</b>		<b>\$19,070,993.93</b>		<b>1,016.0</b>	<b>1,436.2</b>	<b>1,390.5</b>	<b>1,918.6</b>	<b>0</b>	<b>245,589</b>	<b>61,571</b>	

2016 KY POWER FORESTRY CIRCUIT HISTORY Ashland District - Task 2					Costs that were not allocated to a circuit include: internal labor & fleet costs, some unscheduled hotspot maintenance, trouble restoration work, tree ticket investigation, contract clerical work, contract foresters, tree contractors' field supervision, and incentive program for tree contractor's employees.						
Circuit Number	Circuit Name	Cost (Includes O&M and Capital)	Total Line Miles	Reclearing Miles Planned	Reclearing Miles Complete	Brush Cut (acres)	Brush Spray (acres)	Tree Growth Regulator	Tree Removal	Tree Trim	COMMENTS
3000201	Big Sandy - Fallsburg South	\$292,426.41	159.0	24.3	29.3	1.9	73.1		989	1,357	Started interim re-clear
3000701	Greysbranch - Graysbranch	\$116,766.65	66.0	24.3	27.7	2.8	0.0		620	440	Started interim re-clear
3103101	Olive Hill - Globe	\$272,761.67	117.0	24.3	27.6	7.6	0.0		1,397	914	Started interim re-clear
<b>ASHLAND DISTRICT Totals</b>		<b>\$681,953.73</b>		<b>72.9</b>	<b>84.6</b>	<b>12.3</b>	<b>73.1</b>	<b>0</b>	<b>3,016</b>	<b>2,711</b>	
<b>Hazard District - Task 2</b>											
3302701	Hazard - Blackgold	\$325,278.60	55.0	55.0	55.0	0.0	3.5		5,511	841	Completed interim re-clear
3302703	Hazard - Hazard	\$92,110.95	11.2	11.2	11.2	0.0	0.0		449	505	Completed interim re-clear
3309104	Whitesburg - Crafts Colley	\$234,733.64	27.6	17.4	27.2	0.0	3.5		3,542	1,234	Interim re-clear
3309902	Slemp - Leatherwood	\$23,686.62	71.2	0.0	4.0	0.0	3.5		601	147	Started interim re-clear
3309903	Slemp - Beech Fork	\$2,697.09	1.7	1.7	1.7	0.0	0.0		75	3	Completed interim re-clear
3309904	Slemp - Royal Diamond	\$4,339.21	2.2	2.2	2.2	0.0	0.0		282	8	Completed interim re-clear
3311101	Stinnell - Redbird	\$123,631.67	120.7	0.0	16.0	0.0	3.5		2,806	571	Started interim re-clear
3311102	Stinnell - Beech Fork	\$21,916.02	9.5	8.0	8.0	0.0	3.3		228	26	Started interim re-clear
3314401	Mayking - Eimine	\$192,059.51	28.8	18.6	28.6	5.9	21.1		2,284	1,013	Interim re-clear
3314402	Mayking - Milstone	\$98,196.20	55.0	55.0	55.0	24.9	17.4		2,633	1,320	Completed interim re-clear
<b>HAZARD DISTRICT Totals</b>		<b>\$1,118,649.81</b>		<b>169.1</b>	<b>208.9</b>	<b>30.6</b>	<b>55.8</b>	<b>0</b>	<b>18,411</b>	<b>5,668</b>	
<b>Pikeville District - Task 2</b>											
3200202	Barrenshe - Vulkan A	\$11,592.67	45.0	0.0	0.0	0.0	0.0		0	0	Started interim re-clear
3400101	Allen - Distribution	\$2,263.76	27.8	0.0	0.0	0.0	0.0		0	0	Started interim re-clear
3401002	Elwood - Virgie	\$13,332.03	73.8	0.0	0.0	0.0	0.0		0	0	Started interim re-clear
3404302	Sidney - Coburn Mtn.	\$1,104,469.42	47.0	47.0	47.0	103.5	5.6		6,497	3,315	Completed interim re-clear
3406002	W. Paintsville - Staffordsville	\$441,626.83	46.7	22.0	33.0	4.3	0.0		3,050	1,290	Started interim re-clear
3406401	Feds Creek - Feds Creek	\$394,769.56	41.0	41.0	41.0	17.6	94.6		1,882	559	Completed interim re-clear
3406402	Feds Creek - Lick Creek	\$273,518.86	18.0	18.0	18.0	1.1	21.8		1,846	856	Completed interim re-clear
3974101	Big Rock - Conaway	\$7,066.47	1.0	1.0	1.0	0.0	0.0		15	29	Completed interim re-clear
<b>PIKEVILLE DISTRICT Totals</b>		<b>\$2,248,671.60</b>		<b>129.0</b>	<b>140.0</b>	<b>126.3</b>	<b>122.0</b>	<b>0</b>	<b>13,280</b>	<b>6,049</b>	
<b>Total Kentucky Power - Task 2</b>		<b>\$4,049,276.14</b>		<b>371</b>	<b>433.5</b>	<b>169.6</b>	<b>250.9</b>	<b>0</b>	<b>34,717</b>	<b>14,428</b>	

2016 Kentucky Power Revised Distribution VM PLAN					Costs that are not allocated to a circuit include; internal labor & fleet costs, unscheduled hotspot maintenance, trouble restoration work, tree ticket investigation, contract clerical work, contract foresters, tree contractors' field supervision, and incentive program for tree contractor's employees.					
Task 1 Full Circuit Re-Clearing Plan					PROJECTED O&M COST per MILE	O&M	FORESTRY CAPITAL ASSOCIATED WITH RE-CLEARING	TOTAL COST	COMMENTS	
DISTRICT	STATION NAME	CIRCUIT NAME	CIRCUIT NUMBER	CIRCUIT LINE MILES	MILES PLANNED					
ASH	Ashland	25th St	3000101	1.4	1.4	\$11,300	\$15,820	\$1,740	\$17,560	Full Circuit Re-clear
ASH	Ashland	29th St	3000102	6.8	6.8	\$11,300	\$76,840	\$8,452	\$85,292	Full Circuit Re-clear
ASH	Ashland	14th St	3000103	1.3	1.3	\$11,300	\$14,690	\$1,616	\$18,306	Full Circuit Re-clear
ASH	Ashland	3rd St	3000104	0.2	0.2	\$11,300	\$2,260	\$249	\$2,509	Full Circuit Re-clear
ASH	Ashland	1st St	3000105	1.7	1.7	\$11,300	\$19,210	\$2,113	\$21,323	Full Circuit Re-clear
ASH	Princess	Meade	3117601	46.8	12.6	\$11,300	\$142,380	\$15,652	\$158,042	Complete Full Circuit Re-clear
ASH	Princess	Rt 180	3117602	23.1	12.2	\$11,300	\$137,860	\$15,165	\$153,025	Full Circuit Re-clear
ASH	Howard Collins	Summit	3001204	25.4	25.4	\$11,300	\$287,020	\$31,572	\$318,592	Full Circuit Re-clear
ASH	Grayson	Dixie Park	3116102	33.5	12.9	\$11,300	\$145,770	\$18,035	\$161,805	Complete Full Circuit Re-clear
ASH	Grayson	Lansdowne	3116101	35.3	35.3	\$11,300	\$398,890	\$43,878	\$442,768	Full Circuit Re-clear
ASH	Hitchens	Grayson	3001003	48.0	8.8	\$11,300	\$99,440	\$10,938	\$110,378	Begin Full Circuit Re-clear
ASH	Belhaven	Argillite	3116703	27.6	27.6	\$11,300	\$311,880	\$34,307	\$346,187	Full Circuit Re-clear
ASH	Belhaven	Indian Run	3116702	18.9	18.9	\$11,300	\$213,570	\$23,493	\$237,063	Full Circuit Re-clear
ASH	Belhaven	Diedrich	3116701	8.9	8.9	\$11,300	\$100,570	\$11,063	\$111,633	Full Circuit Re-clear
ASH	Russell	Bear Run	3010602	13.0	10.0	\$11,300	\$113,000	\$12,430	\$125,430	Complete Full Circuit Re-clear
ASH	Russell	Ashland Oil	3010603	1.1	1.1	\$11,300	\$12,430	\$1,367	\$13,797	Full Circuit Re-clear
ASH	Busseyville	Louisa	3007903	44.0	44.0	\$11,300	\$497,200	\$54,692	\$551,892	Full Circuit Re-clear
ASH	Busseyville	Mattie	3007905	92.5	69.5	\$11,300	\$785,350	\$88,389	\$873,739	Complete Full Circuit Re-clear
ASH	South Neal	Whites Creek	2206403	38.8	18.8	\$11,300	\$212,440	\$23,368	\$235,808	Complete Full Circuit Re-clear
ASH	Hoods Creek	Rural	3001102	47.2	32.2	\$11,300	\$383,850	\$40,025	\$403,875	Full Circuit Re-clear
ASH	Louisa	High Bottom	3001402	13.0	3.0	\$11,300	\$33,900	\$3,729	\$37,629	Complete Full Circuit Re-clear
ASH	Coalton	US 60 W	3003701	88.7	13.7	\$11,300	\$154,810	\$17,029	\$171,839	Complete Full Circuit Re-clear
ASH	Coalton	Trace Creek	3003703	82.5	27.7	\$11,300	\$313,010	\$34,431	\$347,441	Begin Full Circuit Re-clear
<b>Ashland District (Task 1) Totals</b>					<b>394.0</b>		<b>\$4,452,200</b>	<b>\$489,742</b>	<b>\$4,941,942</b>	
HAZ	Bluegrass	Walkertown	3300601	28.5	15.8	\$10,560	\$166,848	\$33,370	\$200,218	Full Circuit Re-clear
HAZ	Chaves	Chaves	3301101	68.1	20.0	\$10,560	\$211,200	\$42,240	\$253,440	Begin Full Circuit Re-clear
HAZ	Vico	Jeff	3309302	84.7	28.8	\$10,560	\$314,688	\$62,938	\$377,626	Continue Full Circuit Re-clear
HAZ	Slomp	Defeated Creek	3309901	13.4	13.4	\$10,560	\$141,504	\$28,301	\$169,805	Full Circuit Re-clear
HAZ	Slomp	Leatherwood	3309902	71.3	27.7	\$10,560	\$292,512	\$58,502	\$351,014	Continue Full Circuit Re-clear
HAZ	Haddix	Quicksand	3310501	202.0	10.0	\$10,560	\$105,600	\$21,120	\$126,720	Continue Full Circuit Re-clear
HAZ	Haddix	Canoe	3310502	125.0	24.8	\$10,560	\$261,888	\$52,378	\$314,266	Continue Full Circuit Re-clear
HAZ	Fleming	Neon	3401301	20.5	20.5	\$10,560	\$216,480	\$43,296	\$259,776	Complete Full Circuit Re-clear
HAZ	Fleming	McRoberts	3401302	30.2	20.3	\$10,560	\$214,368	\$42,674	\$257,042	Complete Full Circuit Re-clear
HAZ	Soitshell	Vest	3420001	59.0	38.7	\$10,560	\$408,672	\$81,734	\$490,406	Continue Full Circuit Re-clear
<b>Hazard District (Task 1) Totals</b>					<b>221.0</b>		<b>\$2,333,760</b>	<b>\$466,762</b>	<b>\$2,800,512</b>	
PKV	Dewey	Inez	3411401	171.0	143.5	\$14,420	\$2,069,218	\$186,230	\$2,255,448	Complete Full Circuit Re-clear
PKV	Johns Creek	Raccoon	3411802	84.0	58.3	\$14,420	\$840,665	\$75,660	\$916,325	Complete Full Circuit Re-clear
PKV	Betsy Layne	Tram	3400302	35.0	35.0	\$14,420	\$504,687	\$45,422	\$550,109	Full Circuit Re-clear
PKV	Henry Clay	Ashcamp	3401703	43.0	43.0	\$14,420	\$620,045	\$55,804	\$675,849	Full Circuit Re-clear
PKV	Henry Clay	Regina	3401702	110.0	49.3	\$14,420	\$710,888	\$63,980	\$774,868	Begin Full Circuit Re-clear
PKV	South Pikeville	Pikeville	3410501	10.0	10.0	\$14,420	\$144,196	\$12,978	\$157,174	Full Circuit Re-clear
PKV	Topmost	Dema	3407101	37.0	37.0	\$14,420	\$533,527	\$48,017	\$581,544	Full Circuit Re-clear
PKV	Topmost	Kite	3407103	25.0	25.0	\$14,420	\$360,491	\$32,444	\$392,935	Full Circuit Re-clear
PKV	Topmost	Caney	3407102	4.4	4.4	\$14,420	\$63,445	\$5,710	\$69,155	Full Circuit Re-clear
PKV	Pikeville	City	3408001	23.9	12.9	\$14,420	\$186,013	\$16,741	\$202,755	Complete Full Circuit Re-clear
PKV	Kenwood	Auxder	3409302	41.6	2.6	\$14,420	\$37,491	\$3,374	\$40,865	Complete Full Circuit Re-clear
PKV	Mckinney	Maytown	3402204	36.0	36.0	\$14,420	\$519,107	\$46,720	\$565,827	Full Circuit Re-clear
PKV	Garrett	Lackey	3413402	35.0	35.0	\$14,420	\$504,687	\$45,422	\$550,109	Full Circuit Re-clear
PKV	E. Prestonsburg	Prestonsburg	3410601	7.0	7.0	\$14,420	\$100,937	\$9,084	\$110,022	Full Circuit Re-clear
PKV	Prestonsburg	City	3403301	7.0	7.0	\$14,420	\$100,937	\$9,084	\$110,022	Full Circuit Re-clear
PKV	Kenwood	W. Vanlear	3409301	19.0	19.0	\$14,420	\$273,973	\$24,658	\$298,631	Full Circuit Re-clear
PKV	Index	Distribution	3401801	54.0	54.0	\$14,420	\$778,661	\$70,079	\$848,740	Full Circuit Re-clear
PKV	Middle Creek	Distribution	3402501	6.0	6.0	\$14,420	\$86,518	\$7,787	\$94,304	Full Circuit Re-clear
<b>Pikeville District (Task 1) Totals</b>					<b>585.0</b>		<b>\$8,435,490</b>	<b>\$759,194</b>	<b>\$9,194,684</b>	
<b>FULL-CIRCUIT RE-CLEARING (TASK 1) TOTALS</b>					<b>1200.0</b>		<b>\$15,221,450</b>	<b>\$1,715,698</b>	<b>\$16,937,138</b>	

2016 Kentucky Power Revised Distribution VM PLAN						Costs that are not allocated to a circuit include: internal labor & fleet costs, unscheduled hotspot maintenance, trouble restoration work, tree ticket investigation, contract clerical work, contract foresters, tree contractor's field supervision, and incentive program for tree contractor's employees.				
Task 2 Interim Re-Clearing Plan										
DISTRICT	STATION NAME	CIRCUIT NAME	CIRCUIT NUMBER	CIRCUIT LINE MILES	MILES PLANNED	PROJECTED O&M COST per MILE	O&M	FORESTRY CAPITAL ASSOCIATED WITH INTERIM RE-CLEAR	TOTAL COST	COMMENTS
ASH	Big Sandy	Fallsburg	3000201	159.9	58.1	\$14,310	\$831,388	\$33,256	\$864,644	Continue Interim Re-clear
ASH	Gray's Branch	Gray's Branch	3000701	68.3	23.0	\$14,310	\$329,121	\$13,165	\$342,286	Continue Interim Re-clear
ASH	Olive Hill	Globe	3103101	150.3	75.0	\$14,310	\$1,073,221	\$42,929	\$1,116,149	Continue Interim Re-clear
ASH	Wurtland	Route 503	3110903	45.5	18.0	\$14,310	\$257,573	\$10,303	\$267,876	Start Interim Re-clear
ASH	47th Street	39th Street	3008002	12.9	12.9	\$14,310	\$184,594	\$7,384	\$191,978	Interim Re-clear
ASH	Bellfonte	Westwood	3000302	23.0	23.0	\$14,310	\$329,121	\$13,165	\$342,286	Interim Re-clear
Ashland District (Task 2) Totals					210.0		\$3,005,017	\$120,201	\$3,125,218	
HAZ	Combs	Combs	3301401	9.0	9.0	\$7,093	\$63,837	\$2,553	\$66,390	Interim Re-clear
HAZ	Combs	Airport Gardens	3301402	42.9	42.9	\$7,093	\$304,290	\$12,172	\$316,461	Interim Re-clear
HAZ	Beckham	Hindman	3308401	101.5	81.5	\$7,093	\$436,220	\$17,449	\$453,668	Start Interim Re-clear
HAZ	Sinnett	Redbird	3311101	120.7	84.2	\$7,093	\$597,231	\$23,889	\$621,120	Continue Interim Re-clear
HAZ	Sinnett	Beech Fork	3311102	9.5	1.5	\$7,093	\$10,640	\$426	\$11,065	Complete Interim Re-clear
HAZ	Bluegrass	Walkertown	3300601	29.0	12.7	\$7,093	\$90,081	\$3,603	\$93,684	Start Interim Re-clear
HAZ	Reedy	Deane	3311401	43.2	43.2	\$7,093	\$306,418	\$12,257	\$318,674	Interim Re-clear
Hazard District (Task 2) Totals					255.0		\$1,808,715	\$72,349	\$1,881,064	
PKV	Allen	Distribution	3400101	38.0	15.0	\$14,832	\$222,484	\$8,899	\$231,383	Continue Interim Re-Clear
PKV	Elwood	Dorton	3401001	46.0	46.0	\$14,832	\$682,283	\$27,291	\$709,575	Interim Re-clear
PKV	Elwood	Virgie	3401002	71.0	71.0	\$14,832	\$1,053,090	\$42,124	\$1,095,213	Complete Interim Re-clear
PKV	Fishrap	Distribution	3414901	4.4	4.0	\$14,832	\$59,329	\$2,373	\$61,702	Interim Re-clear
PKV	Barrenshe	Vulcan	3200202	49.0	49.0	\$14,832	\$726,780	\$29,071	\$755,851	Interim Re-clear
PKV	Ford's Branch	Stelby	3411901	39.0	39.0	\$14,832	\$578,458	\$23,138	\$601,596	Interim Re-clear
PKV	Ford's Branch	Robinson Creek	3411902	55.0	15.0	\$14,832	\$222,484	\$8,899	\$231,383	Interim Re-clear
PKV	Burdine	Levisa	3409502	39.0	15.0	\$14,832	\$222,484	\$8,899	\$231,383	Start Interim Re-clear
PKV	Kerwood	Hagerhill	3409303	51.0	20.0	\$14,832	\$296,645	\$11,866	\$308,511	Start Interim Re-clear
PKV	Draffin	Yellowhill	3400702	12.4	12.0	\$14,832	\$177,987	\$7,119	\$185,106	Interim Re-clear
PKV	Lovely	Lovely	3202201	41.0	20.0	\$14,832	\$296,645	\$11,866	\$308,511	Start Interim Re-clear
Pikeville District (Task 2) Totals					306.0		\$4,538,668	\$181,547	\$4,720,215	
<b>INTERIM RE-CLEARING (TASK 2) TOTALS</b>					<b>771</b>		<b>\$9,352,400</b>	<b>\$374,058</b>	<b>\$9,726,458</b>	

## **Kentucky Power Forestry Plan Terminology**

### **Feeder Breaker Zone**

**Synonymous with Station Zone. Segment of line extending from the circuit station breaker to the first operating device. This zone includes unfused taps, but does not include fused taps.**

### **Full Circuit Reclear**

**Entire circuit from the station breaker to the end of the circuit.**

### **Recloser Zone**

**Line segment extending from a specific recloser to the next operating device. This zone includes unfused taps, but does not include fused taps.**

### **Partial Reclear**

**A portion of the circuit is planned for reclearing.**

### **BID JOB**

**Planned reclearing work released as an open, lump-sum bid for competing contractors.**

### **Finish Full Circuit Reclear**

**Reclearing scheduled to complete Full Circuit Reclear that began in the previous year.**

### **2<sup>nd</sup> Recloser Zone**

**Line segment beginning at the second operating device beyond the station circuit breaker extending to the next operating device. This zone includes unfused taps, but does not include fused taps.**

### **Quality-of-Service Work**

**Tree trimming or removal work scheduled for a line segment to address reliability issues. This work does not conform to reclearing specifications (e.g.-Hotspotting).**

### **Cycle Buster Tree**

**A tree that has to be revisited before the circuit is due for its next cycle trim.**

**Section 5 - Circuit Report**  
**Reporting Year : 2015**

	District	Station/ Circuit Number	Station Name	Circuit Name	Station Location	Area Served	Circuit Length (Mi)	Number of Customers Served	Last Circuit R/W Trim Date Completed	Reliability Data For Reporting Year				Circuit Outage Causes for Report Year		List of Corrective Actions	Comments
										Circuit 5 Year Avg SAIDI	Reporting Year SAIDI	Circuit 5 Year Avg SAIFI	Reporting Year SAIFI	Outage Causes	% of Outages Due to Causes Listed in Previous Column		
1	Ashland	3000102	Ashland	29th Street	Ashland	South Ashland, along US 23, 29th St to 39th St	6.88	625	Prior to 2010	86.1	95.6	0.773	0.701	Weather - Lightning, Equipment Failure, Scheduled Company, Tree Outside ROW, Unknown (Non Weather), Other, Tree Inside ROW, Vehicle Accident (Non AEP)	27.78, 22.22, 11.11, 11.11, 11.11, 5.56, 5.56, 5.56%	May add this circuit to 2016 cutout replacement list.	Weather - Lightning and Tree Outside ROW contributed to 73% of SAIFI and to 53% of CMI. Of the Equipment Failure outages, 75% were cutouts. Tree trim Scheduled for 2018
2	Ashland	3000103	Ashland	14th Street	Ashland	25th Street and Mayo Plaza	1.42	127	Prior to 2010	30.2	52.5	0.39	0.268	Equipment Failure	100.00%	No actions planned for 2016.	Only one outage which was due to a failed cutout. Tree trim scheduled for 2017.
3	Ashland	3000301	Bellefonte	Westwood	Off US 23 between SR 5 and A K Steel entrance	French Broad St, Armco Blvd, Hoods Crk Pike, Westwood, Old Buckley Rd, McKnight St	23.54	1,604	8/27/2011	156.9	257.9	1.018	0.701	Equipment Failure, Unknown (Non Weather), Tree Inside ROW, Scheduled Company, Animal - Bird, Error - Operations, Tree Removal (Non AEP), Weather - Lightning, Weather - Unknown	35.48, 19.35, 16.13, 12.90, 3.23, 3.23, 3.23, 3.23%	No actions planned for 2016.	Four Scheduled Company outages contributed to 77% of SAIFI and to 88% of CMI.
4	Ashland	3000304	Bellefonte	Ashland Town Center	Off US 23 between SR 5 and A K Steel entrance	Armco Rd, Providence Hill Dr	3.33	268	2015	78.6	187.1	0.589	0.813	Equipment Failure, Tree Outside ROW, Vandalism, Weather - Lightning	40.00, 20.00, 20.00, 20.00%	No actions planned for 2016.	One Weather - Lightning outage contributed to 73% of SAIFI and to 41% of CMI during 2015.
5	Ashland	3000701	Graysbranch	Graysbranch	Ohio River Road and entrance to Greenup Locks and Dam	Ohio River Road, US 23, Smith Br, Coal Branch, Whetstone Rd	68.84	1,220	3/31/2011	167.1	405	0.732	0.639	Equipment Failure, Tree Outside ROW, Weather Ice, Scheduled Company, Unknown (Non Weather), Weather - Unknown, Tree Inside ROW, Weather - Lightning, Other, Weather - High Winds	28.57, 19.05, 11.90, 9.52, 9.52, 7.14, 4.76, 4.76, 2.38, 2.38%	No actions planned for 2016.	Five Weather - Ice outages contributed to 18% of SAIFI and to 64% of CMI during 2015.
6	Ashland	3000801	Hayward	Haldeman	Near 6876 SR 174	SR 174, US 60, and SR 377	118.44	1,663	12/6/2014	535.2	788.1	2.404	2.906	Equipment Failure, Tree Outside ROW, Unknown (Non Weather), Weather - Lightning, Weather - Ice, Weather - Unknown, Other, Scheduled Company, Vehicle Accident (Non AEP), Weather - High Winds, Animal - Non Bird, Error - Field, Tree Inside ROW, Vine	31.08, 16.22, 13.51, 8.11, 6.76, 6.76, 4.05, 2.70, 2.70, 2.70, 1.35, 1.35, 1.35, 1.35%	No actions planned for 2016.	Tree Outside ROW outages contributed to 56% of SAIFI and to 67% of CMI on this circuit during 2015. Twenty cutouts were replaced on this circuit in 2015.
7	Ashland	3000802	Hayward	Lawton	Near 6876 SR 174	SR 174, SR 955, SR 1620	36.85	355	Prior to 2010	313.1	426.3	1.950	2.293	Equipment Failure, Tree Outside ROW, Unknown (Non Weather), Tree Inside ROW, Scheduled Company, Weather - Ice, Vine, Weather - Lightning, Weather - Unknown	26.67, 23.33, 16.67, 10.00, 6.67, 6.67, 3.33, 3.33, 3.33%	No actions planned for 2016.	Tree Outside ROW outages contributed to 49% of SAIFI and to 43% of CMI on this circuit in 2015. Twenty cutouts were replaced on this circuit in 2015. Tree trim scheduled for 2017 and 2018.
8	Ashland	3001002	Hitchins	Willard	Off SR 773 along Clay Camp	SR 773, SR 1, Cherokee, and Bells Trace	152.15	1,235	Prior to 2010	824.5	866.4	3.082	2.465	Tree Outside ROW, Equipment Failure, Unknown (Non Weather), Weather - Unknown, Scheduled Company, Tree Inside ROW, Vehicle Accident (Non AEP), Weather - Lightning, Other, Weather - High Winds, Tree Removal (Non AEP), Vine, Weather - Ice	30.93, 19.59, 17.53, 8.25, 5.15, 5.15, 3.09, 3.09, 2.06, 2.06, 1.03, 1.03, 1.03%	Planned cutout replacements in 2016.	Tree Outside ROW outages contributed to 33% of SAIFI and to 35% of CMI. Weather - Unknown outages contributed to 34% of SAIFI and to 39% of CMI. Fourty cutouts were replaced on this circuit in 2015. Tree trim scheduled for 2017, 2018.
9	Ashland	3001201	Howard Collins	13th Street	Near Junction of Skyline Drive and Floyd Street in Ashland	13th Street, Blackburn Ave, Coburn Ave, and Mantz St	13.92	1,386	2015	109.7	112.1	0.607	1.407	Equipment Failure, Unknown (Non Weather), Animal - Non Bird, Tree Outside ROW, Scheduled Company, Error - Field, Weather - Lightning, Cust Equipment, Other, Tree Inside ROW, Vehicle Accident (Non AEP), Weather - Ice, Weather - Unknown, Weather - High Winds	22.73, 22.73, 11.36, 11.36, 6.82, 4.55, 4.55, 2.27, 2.27, 2.27, 2.27, 2.27, 2.27, 2.27, 2.27%	Planned cutout replacements in 2016.	One feeder breaker outage that was caused by a failed cutout contributed to 71% of SAIFI and 31% of CMI for this circuit during 2015.
10	Ashland	3002106	Tenth Street	Front Street	Greenup Ave, US 23, Ashland	Front St, from 3rd St to 13th St	2.51	104	2015	25.0	328.8	0.508	1.808	Equipment Failure, Scheduled Company, Error - Field, Fire - AEP, or Affecting > 1 Cust, Other, Unknown (Non Weather)	41.67, 25.00, 8.33, 8.33, 8.33, 8.33%	Investigate spacer cable replacement.	Equipment Failure contributed to 40% of SAIFI and to 79% of CMI in 2015. One outage to repair failed spacer cable and one outage to replace a failed UG transformer caused most of the customer outage minutes in 2015.

	District	Station/ Circuit Number	Station Name	Circuit Name	Station Location	Area Served	Circuit Length (Mi)	Number of Customers Served	Last Circuit R/W Trim Date Completed	Circuit 5 Year Avg SAIDI	Reporting Year SAIDI	Circuit 5 Year Avg SAIFI	Reporting Year SAIFI	Outage Causes	% of Outages Due to Causes Listed in Previous Column	List of Corrective Actions	Comments
11	Ashland	3003701	Coalton	US 60 West	137 S Big Run Rd	US 60, SR 854, SR 1654, Pigeon Roost Rd	88.72	1,200	2015	706.6	534.8	2.66	4.233	Equipment Failure, Unknown (Non Weather), Tree Outside ROW, Tree Inside ROW, Scheduled Company, Fire - AEP, or Affecting > 1 Cust, Weather - Ice, Weather Lightning, Animal - Non Bird, Animal - Bird, Customer Equipment, Vine, Weather - Unknown	28.21, 21.79, 19.23, 8.97, 7.69, 2.56, 2.56, 2.56, 1.28, 1.28, 1.28, 1.28, 1.28%	Planned cutout replacements in 2016.	Two Scheduled Company outages contributed 47% of SAIFI and to 49% of CMI for this circuit in 2015.
12	Ashland	3003702	Coalton	Cannonsburg	137 S Big Run Rd	US 60, SR 180, parts of Cannonsburg	23.47	520	Prior to 2010	155.0	463	1.459	3.752	Equipment Failure, Unknown (Non Weather), Scheduled Company, Tree Inside ROW, Tree Outside ROW, Error - Field, Vine, Weather - Unknown, Weather - Lightning, Animal - Non Bird, Other, Scheduled Outside Request > 1 Cust, Weather - Ice	18.75, 18.75, 12.50, 10.42, 8.33, 6.25, 6.25, 6.25, 4.17, 2.08, 2.08, 2.08, 2.08	Planned cutout replacements in 2016. Tree trim in 2016.	Six Scheduled Company outages contributed to 61% of SAIFI and to 43% of CMI. Three Weather - Unknown outages contributed to 27% of SAIFI and to 39% of CMI.
13	Ashland	3003703	Coalton	Trace Creek	137 S Big Run Rd	Trace Road, Four Mile Rd, SR 3, SR 854, Rush	83.87	831	Prior to 2010	376.3	697.1	1.562	5.017	Equipment Failure, Tree Inside ROW, Unknown (Non Weather), Tree Outside ROW, Scheduled Company, Other, Weather - Lightning, Weather - Unknown, Animal - Non Bird	33.87, 16.13, 16.13, 14.52, 8.06, 3.23, 3.23, 3.23, 1.61%	Planned cutout replacements in 2016. Tree trim in 2016.	Five Scheduled Company outages contributed to 60% of SAIFI and to 42% of CMI during 2015. Two Weather - Unknown outages contributed to 20% of SAIFI and to 34% of CMI. Cutouts were 38% of the number of Equipment Failures in 2015.
14	Ashland	3007903	Busseyville	Louisa	Issac Park Rd, between SR 32 and US 23	SR 32, Five Forks Rd, US 23,	44.98	615	Scheduled for 2016	280.6	490.9	1.829	1.676	Equipment Failure, Unknown (Non Weather), Other, Tree Inside ROW, Tree Outside ROW, Weather - Lightning, Scheduled Company, Vehicle Accident (Non AEP), Vine, Cust Equipment, Overload, Weather - Unknown, Weather - High Winds	17.31, 17.31, 11.54, 11.54, 9.62, 9.62, 5.77, 5.77, 3.85, 1.92, 1.92, 1.92, 1.92%	No actions planned for 2016.	Tree Inside ROW contributed to 23% of SAIFI and to 37% of CMI. Tree Outside ROW outages contributed to 19% of SAIFI and 28% of CMI in 2015. Sixty cutouts were replaced on this circuit in 2015. This circuit performs well compared to other circuits. Tree trim scheduled for 2018
15	Ashland	3007904	Busseyville	Torchlight	Issac Park Rd, between SR 32 and US 23	US 23, Charley, SR 645, SR 581	98.27	971	2015	693.6	1005.9	3.317	4.593	Tree Outside ROW, Equipment Failure, Tree Inside ROW, Scheduled Company, Unknown (Non Weather), Tree Removal (Non AEP), Vehicle Accident (Non AEP), Weather - Lightning, Weather - Unknown, Error - Field, Foreign Object (Non Animal)	26.25, 21.25, 17.50, 11.25, 11.25, 2.50, 2.50, 2.50, 2.50, 1.25, 1.25%	No actions planned for 2016.	Tree Outside ROW outages contributed to 42% of SAIFI and to 35% of CMI. Tree Inside ROW outages contributed to 27% of SAIFI and to 38% of CMI. Twenty cutouts were replaced in 2015.
16	Ashland	3007905	Busseyville	Mattie	Issac Park Rd, between SR 32 and US 23	SR 32, Shirt Tail Fk, Cedgap Rd, Aaron Br, SR 1760, Irish Crk	91.99	712	Scheduled for 2016	666.0	1345.4	2.946	3.604	Tree Outside ROW, Tree Inside ROW, Equipment Failure, Unknown (Non Weather), Other, Weather - Unknown, Scheduled Company, Tree Removal (Non AEP), Vine, Weather - Lightning	29.76, 21.43, 19.05, 10.71, 5.95, 3.57, 2.38, 2.38, 2.38, 2.38%	Tree trim in 2016.	Tree Outside ROW outage contributed to 46% of SAIFI and to 68% of CMI. Tree trim will continue into 2017. Sixty cutouts were replaced on this circuit in 2015.
17	Ashland	3008001	47th Street	49th Street	Along US 23 at 47th St - South Ashland	Shadowlawn Dr, SR 168, Woodward Dr, Valley View Dr, Cheshire Ln	27.4	1,530	9/14/2013	230.2	362.4	1.099	1.236	Equipment Failure, Scheduled Company, Tree Outside ROW, Tree Inside ROW, Unknown (Non Weather), Other, Animal - Non Bird, Weather - Ice, Vehicle Accident (Non AEP), Weather - Unknown, Error - Field, Overload, Vine, Weather - Lightning	20.78, 18.18, 14.29, 12.99, 10.39, 5.19, 3.90, 3.90, 2.60, 2.60, 1.30, 1.30, 1.30, 1.30%	No actions planned for 2016.	Tree Outside ROW outages contributed to 42% of SAIFI and to 59% of the CMI.
18	Ashland	3008003	47th Street	Catlettsburg	Along US 23 at 47th St - South Ashland	US 23, City of Catlettsburg	28.04	1,299	2015	149.8	135.8	0.81	1.813	Scheduled Company, Other, Equipment Failure, Tree Outside ROW, Unknown (Non Weather), Weather - Lightning, Animal - Non Bird, Tree Inside ROW, Weather - Unknown	34.43, 31.15, 18.03, 4.92, 3.28, 3.28, 1.64, 1.64, 1.64%	No actions planned for 2016.	Scheduled Company outages contributed to 68% of SAIFI and to 41% of CMI. Several scheduled outages were for pole replacement. Twenty two cutouts were replaced on this circuit in 2015.
19	Ashland	3010601	Russell	Kenwood	Just off US 23, along Ashland Dr	Kenwood Dr, St Christopher Dr, Powell Ln	24.4	1,446	2014	408.5	533.6	1.349	5.068	Equipment Failure, Scheduled Company, Animal - Non Bird, Unknown (Non Weather), Tree Inside ROW, Tree Outside ROW, Fire - AEP, or Affecting > 1 Cust, Other, Weather - Lightning, Weather - Unknown	27.27, 27.27, 11.36, 9.09, 6.82, 6.82, 4.55, 2.27, 2.27, 2.27%	Four new automatic sectionalizing devices to be installed in 2016.	Equipment Failure outages contributed to 34% of SAIFI and to 28% of CMI. Three Tree Outside ROW outages contributed to 40% of the SAIFI and to 56% of CMI. A large section of spacer cable was replaced on this circuit in 2015.Planned future distribution automation for this circuit.
20	Ashland	3010602	Russell	Bear Run	Just off US 23, along Ashland Dr	US 23, Shopping Plazas off Diedrich Blvd, City of Russell	12.77	751	Scheduled for 2016	256.8	164	1.373	3.089	Equipment Failure, Tree Outside ROW, Scheduled Company, Weather - Lightning, Other, Unknown (Non Weather), Vandalism, Vehicle Accident (Non AEP), Animal - Non Bird, Fire - AEP, or Affecting > 1 Cust, Scheduled Outside Request, Tree Inside ROW, Weather - Flood/Slide, Weather - Unknown	23.68, 15.79, 13.16, 10.53, 5.26, 5.26, 5.26, 5.26, 2.63, 2.63, 2.63, 2.63, 2.63%	No actions planned for 2016.	One feeder outage that was caused by a failed arrester contributed to 32% of SAIFI. Another feeder outage that was caused by a transmission pole with distribution underbuild that was damaged by fire also contributed to 32% of SAIFI. Tree trim scheduled for 2017. Planned future distribution automation for this circuit.

	District	Station/ Circuit Number	Station Name	Circuit Name	Station Location	Area Served	Circuit Length (Mi)	Number of Customers Served	Last Circuit R/W Trim Date Completed	Circuit 5 Year Avg SAIDI	Reporting Year SAIDI	Circuit 5 Year Avg SAIFI	Reporting Year SAIFI	Outage Causes	% of Outages Due to Causes Listed in Previous Column	List of Corrective Actions	Comments
21	Ashland	3010603	Russell	Ashland Oil	Just off US 23, along Ashland Dr	Ashland Dr, Saint Christopher Dr	1.21	6	2015	63.8	53.2	0.367	1.167	Fire - AEP, or Affecting >1 Cust, Vine	50.00, 50.00%	No actions planned for 2016.	One feeder outage that was caused by the transmission pole with distribution underbuild that was damaged by fire contributed to 86% of SAIFI for this circuit in 2015. Tree trim scheduled for 2018. Planned future distribution automation for this circuit.
22	Ashland	3103101	Olive Hill	Globe	Olive Hill, along US 60	US 60, Smith Run, Rose Rdg, SR 1662, Globe, Fleming Fk	120.73	1,225	12/25/2011	403.3	321.5	1.553	2.239	Equipment Failure, Unknown (Non Weather), Tree Outside ROW, Weather - Lightning, Weather - Unknown, Scheduled Company, Animal - Non Bird, Fire - AEP, or Affecting > 1 Cust, Vine, Other, Tree Inside ROW, Vehicle Accident (Non AEP), Weather - Tornado	27.27, 25.97, 18.18, 6.49, 5.19, 3.90, 2.60, 2.60, 2.60, 1.30, 1.30, 1.30, 1.30%	No actions planned for 2016.	Fourteen Tree Outside ROW outages contributed to 69% of the SAIDI on this circuit in 2015. Forty circuits were replaced on this circuit in 2015.
23	Ashland	3103103	Olive Hill	West Carter Elementary	Olive Hill, along US 60	SR 986, Bens Run, SR 174, Tick Ridge	38.37	296	Prior to 2010	837.2	605.3	1.423	2.605	Unknown (Non Weather), Tree Outside ROW, Weather - Lightning, Equipment Failure, Tree Inside ROW, Vine, Animal - Non Bird, Scheduled Company, Weather - Flood/Slide, Weather - Ice, Weather - Unknown	27.03, 16.22, 16.22, 10.81, 8.11, 8.11, 2.70, 2.70, 2.70, 2.70, 2.70%	No actions planned for 2016.	Tree Outside ROW outages contributed to 45% of SAIFI and 52% of CMI. Tree trim scheduled for 2017.
24	Ashland	3110901	Wurtland	Wurtland	Junction of US 23 and SR 67 (Industrial Parkway)	Wurtland Ave, Harris Rd	1.55	20	2015	3.8	68.3	0.056	1.05	Weather - Lightning	100.00%	No actions planned for 2016.	There was only one outage to this circuit in 2015 due to loss of subtransmission source because of lightning. Tree trim scheduled for 2017.
25	Ashland	3110902	Wurtland	Greenup	Junction of US 23 and SR 67 (Industrial Parkway)	US 23, SR 1, Main St, Downtown Greenup, W Hollow, Horn Hollow, SR 207	52.28	1,293	12/7/2013	260.2	231.4	2.019	2.802	Equipment Failure, Tree Outside ROW, Weather - Lightning, Scheduled Company, Unknown (Non Weather), Fire - AEP, or Affecting >1 Cust, Other, Tree Removal (Non AEP), Weather - Ice	27.42, 24.19, 12.90, 11.29, 8.06, 4.84, 4.84, 1.61, 1.61, 1.61, 1.61%	Planned cutout replacements in 2016.	Equipment Failure and Tree Outside ROW were 52% of the outaged on this circuit in 2015.
26	Ashland	3110903	Wurtland	Rt 503	Junction of US 23 and SR 67 (Industrial Parkway)	Wurtland, SR 503, Wolfpen Hollow, SR 207, Danleyton, Bates Hollow	46.08	997	10/27/2012	336.2	1069.9	1.716	2.725	Tree Outside ROW, Equipment Failure, Scheduled Company, Unknown (Non Weather), Weather - Ice, Weather - Lightning, Cust Equipment, Tree Inside ROW, Weather - Unknown, Animal - Non Bird, Tree Removal (Non AEP), Vehicle Accident (Non AEP), Weather - High Winds	20.41, 16.33, 14.29, 12.24, 8.16, 8.16, 4.08, 4.08, 4.08, 2.04, 2.04, 2.04, 2.04%	Planned cutout replacements in 2016.	Tree Outside ROW outages contributed to 45% of SAIFI and to 67% of CMI for this circuit in 2015.
27	Ashland	3116701	Belhaven	Diederich	Near 243 Thompson Rd	Thompson Road, Diederich Blvd, Short White Oak - Flatwoods	12.12	586	Scheduled for 2016	213.0	86.4	1.009	1.002	Equipment Failure, Abnormal Feed, Tree Inside ROW, Animal - Non Bird, Scheduled Company, Tree Outside ROW, Unknown (Non Weather), Vine, Weather - Lightning, Error - Operations, Weather - Unknown	23.33, 16.67, 13.33, 6.67, 6.67, 6.67, 6.67, 6.67, 6.67, 3.33, 3.33%	No actions planned for 2016.	Only three equipment failures affected the primary on this circuit. The circuit was restored to normal feed in 2015. Tree trim scheduled for 2017.
28	Ashland	3116703	Belhaven	Argillite Road	Near 243 Thompson Rd	Indian Run, Bellefonte Road, Flatwoods, Argillite Road, Highland Ave, Beth Ann Dr	27.62	1,513	Scheduled for 2016	172.9	87.3	0.911	1.029	Equipment Failure, Other, Unknown (Non Weather), Scheduled Company, Tree Inside ROW, Tree Outside ROW, Animal - Non Bird, Scheduled Outside Request, Vehicle Accident (Non AEP), Weather - Lightning	20.41, 20.41, 16.33, 12.24, 12.24, 10.20, 2.04, 2.04, 2.04, 2.04%	Tree trim in 2016.	There was only one significant Equipment Failure outage (insulator) which contributed to 50% of SAIFI but to only 11% of the CMI. Tree Inside ROW and Tree Outside ROW contributed to 22% of the SAIFI to 65% of the CMI on this circuit in 2015.
29	Ashland	3117601	Princess	Meade Station	Off Paul Coffey Blvd, along Mackey Ln	Parts of Cannonsburg, US 60, Meade Springer Rd, Shopes Creek Rd	46.84	1,485	Scheduled for 2016	255.0	292.1	0.95	2.694	Equipment Failure, Unknown (Non Weather), Other, Scheduled Company, Tree Outside ROW, Vehicle Accident (Non AEP), Weather - Lightning, Animal - Non Bird, Tree Inside ROW, Overload, Weather - Unknown, Abnormal Feed, Customer Equipment, Error - Field, Foreign Object (Non Animal), Tree Removal (Non AEP)	35.44, 10.13, 7.59, 7.59, 7.59, 6.33, 6.33, 3.80, 3.80, 2.53, 2.53, 1.27, 1.27, 1.27, 1.27, 1.27%	Tree trim in 2016.	One feeder outage was caused by a failed 69kV arrester on the station transformer which contributed to 37% of SAIFI and to only 3% of CMI. Weather - Lightning contributed to 38% of SAIFI and to 32% of CMI. Forty three cutouts were replaced on this circuit in 2015. Tree trim scheduled for 2017.



	District	Station/ Circuit Number	Station Name	Circuit Name	Station Location	Area Served	Circuit Length (Mi)	Number of Customers Served	Last Circuit R/W Trim Date Completed	Circuit 5 Year Avg SAIDI	Reporting Year SAIDI	Circuit 5 Year Avg SAIFI	Reporting Year SAIFI	Outage Causes	% of Outages Due to Causes Listed in Previous Column	List of Corrective Actions	Comments
30	Ashland	3117602	Princess	Rt 180	Off Paul Coffey Blvd, along Mackey Ln	SR 5, Straight Creek Road, Buena Vista Dr, East Park Industrial Sites	24.93	291	Prior to 2010	230.9	266.2	1.1340	2.017	Equipment Failure, Tree Inside ROW, Unknown (Non Weather), Scheduled Company, Tree Outside ROW, Weather - Lightning, Weather - Unknown	29.17, 29.17, 12.50, 8.33, 8.33, 8.33, 4.17%	May add this circuit to 2016 cutout replacement list.	One feeder outage was caused by a failed 69kV arrester on the station transformer. This single outage contributed to 50% of the SAIFI and 35% of CMI for this circuit in 2015. Tree trim scheduled for 2017.
31	Pikeville	2150105	Sprigg	Matewan	Lobata along the Tug Fork	Matewan	7.71	136	Prior to 2010	391.8	747.2	2.556	5.551	Tree Inside ROW, Tree Outside ROW, Vine, Vehicle Accident (Non AEP), Equipment Failure, Unknown (Non Weather), Weather - Flood/Slide, Weather - Unknown	36.36, 18.18, 18.18, 9.09, 4.55, 4.55, 4.55%	No actions planned for 2016.	Two feeder breaker outages were caused by vehicle accidents and two feeder breaker outages were caused by trees outside ROW. These four outages contributed to 72% of SAIFI and to 44% of CMI for this circuit in 2015. Only 24 outages occurred on this circuit in 2015.
32	Pikeville	2974101	Big Rock	Conaway	Big Rock and Old Rock Lick in VA	Serves few customers on Buckeye Crk	0.7	7	11/13/2010	386.0	417.4	1.829	2.143	Scheduled Company, Unknown (Non Weather)	66.67, 33.33%	No actions planned for 2016.	There were only three outages on this circuit in 2015. Two Scheduled Company Outages contributed to 53% of SAIFI and 43% of CMI.
33	Pikeville	3200201	Barrenshe	Freeburn	Near State Highway 194 E, Freeburn	SR 194, Gooslin Bottom, Daugherty Branch, Sycamore Hill, Pounding Mill Rd	12.72	335	Prior to 2010	637.2	663.7	3.545	2.991	Tree Inside ROW, Equipment Failure, Other, Scheduled Company, Tree Outside ROW, Vehicle Accident (Non AEP), Vine	30.00, 20.00, 10.00, 10.00, 10.00, 10.00, 10.00%	May begin tree trim in late 2016.	Three outages accounted for 84% of the CMI on this circuit in 2015. One was scheduled, one was tree outside ROW and one was due to a vehicle accident.
34	Pikeville	3200302	Belfry	Toler	Near US Highway 119 N, Belfry	US 119, Church House Hollow, Toler Rd, Forest Hills Road, Compton Bottom	29.95	825	Prior to 2010	472.6	534.3	3.177	3.446	Equipment Failure, Other, Tree Outside ROW, Unknown (Non Weather), Weather - Unknown, Animal - Non Bird, Scheduled Company, Vehicle Accident (Non AEP), Animal - Bird, Tree Inside ROW, Tree Removal (Non AEP), Vandalism, Weather - Flood/Slide	22.86, 20.00, 8.57, 8.57, 8.57, 5.71, 5.71, 5.71, 2.86, 2.86, 2.86, 2.86, 2.86%	No actions planned for 2016.	One feeder breaker outage caused by Tree Outside ROW accounted for 29% of the SAIFI and 46% of the CMI on this circuit in 2015.
35	Pikeville	3202202	Lovely	Wolf Creek	Near State Highway 292, Lovely	Wolf Creek, Big Branch, Little Peter Cave Rd, SR 292	59.5	815	1/15/2015	601.2	855.2	3.467	2.456	Equipment Failure, Tree Outside ROW, Weather - Unknown, Scheduled Company, Other, Unknown (Non Weather), Vehicle Accident (Non AEP), Vine, Animal - Non Bird, Tree Inside ROW, Tree Removal (Non AEP), Weather - Flood/Slide	26.09, 23.91, 10.87, 8.70, 6.52, 6.52, 4.35, 4.35, 2.17, 2.17, 2.17, 2.17%	Planned cutout replacements in 2016.	Equipment Failure outages accounted for 36% of CMI and Tree Outside ROW outages accounted for 36% of customer outage minutes on this circuit in 2015.
36	Pikeville	3202203	Lovely	Mt Sterling Branch	Near State Highway 292, Lovely	SR 292, Long Branch, Stepp Branch	12.89	193	3/15/2014	639.0	791.2	2.477	4.461	Equipment Failure, Scheduled Company, Tree Outside ROW, Unknown (Non Weather), Vehicle Accident (Non AEP), Weather - Unknown	54.55, 9.09, 9.09, 9.09, 9.09, 9.09%	Additional switches will be installed to enable more partial restoration during outages.	Three feeder breaker outages accounted for 67% of the SAIFI on this circuit in 2015. Two Equipment Failure outages (one cutout failure and one insulator failure) accounted for 51% of the CMI and one Vehicle Accident outage accounted for 14% of the CMI on this circuit.
37	Hazard	3300601	Bluegrass	Walkertown	Messer Branch, Hazard	Hazard, Walkertown	28.88	1,227	Scheduled for 2016	133.2	148.6	1.244	1.441	Equipment Failure, Tree Outside ROW, Fire - AEP, or Affecting > 1 Cust, Other, Tree Inside ROW, Overload, Unknown (Non Weather), Vine, Error - Operations, Tree Removal (Non AEP), Weather - High Winds	31.58, 15.79, 10.53, 10.53, 7.89, 5.26, 5.26, 5.26, 2.63, 2.63, 2.63%	Tree trim in 2016.	A single transmission line outage due to Equipment Failure accounted for 69% of SAIFI and 48% of the CMI.
38	Hazard	3301401	Combs	Combs	Combs Road, Combs	Combs, parts of Hazard	9.02	469	2/19/2011	60.3	377.2	0.357	2.296	Equipment Failure, Scheduled Company, Error - Field, Tree Outside ROW, Unknown (Non Weather), Fire - AEP, or Affecting > 1 Cust, Other, Tree Inside ROW, Tree Removal (Non AEP)	27.78, 16.67, 11.11, 11.11, 11.11, 11.11, 5.56, 5.56, 5.56, 5.56%	No actions planned for 2016.	Two feeder breaker outages accounted for 87% of SAIFI. One was an Equipment Failure (crossarm) which accounted for 67% of the CMI and one was Scheduled Company (make repairs to station DC battery) which accounted for 9% of the CMI on this circuit in 2016. Interim re-clearing planned for 2016
39	Hazard	3301402	Combs	Airport Garden	Combs Road, Combs	Combs, Air Port Garden, Lotts Creek, Darfork	43.12	1,019	12/15/2011	189.5	721.8	1.248	2.731	Equipment Failure, Tree Outside ROW, Other, Unknown (Non Weather), Vehicle Accident (Non AEP), Animal - Non Bird, Scheduled Company, Weather - Unknown, Overload, Vandalism, Vine, Weather - Flood/Slide	33.33, 15.56, 11.11, 11.11, 6.67, 4.44, 4.44, 4.44, 2.22, 2.22, 2.22, 2.22%	Tree trim in 2016.	One long feeder breaker outage was Scheduled Company which was 37% of SAIFI and 47% of the CMI on this circuit in 2015. Interim re-clearing planned for 2016.

	District	Station/ Circuit Number	Station Name	Circuit Name	Station Location	Area Served	Circuit Length (Mi)	Number of Customers Served	Last Circuit R/W Trim Date Completed	Circuit 5 Year Avg SAIDI	Reporting Year SAIDI	Circuit 5 Year Avg SAIFI	Reporting Year SAIFI	Outage Causes	% of Outages Due to Causes Listed in Previous Column	List of Corrective Actions	Comments
40	Hazard	3301701	Daisy	Leatherwood	Leatherwood Cr Rd, Cornettsville	Daisy, Cornettsville, Ulvah, Hallie, Part of Fusonia	88.4	1,099	5/12/2014	663.7	1218.8	2.398	3.579	Tree Outside ROW, Equipment Failure, Unknown (Non Weather), Other, Scheduled Company, Tree Inside ROW, Tree Removal (Non AEP), Vine, Weather - Lightning, Weather - Unknown, Animal - Non Bird, Cust Equipment, Fire - AEP, or Affecting > 1 Cust, Vehicle Accident (Non AEP), Weather - High Winds	25.71, 18.57, 11.43, 10.00, 8.57, 5.71, 4.29, 2.86, 2.86, 2.86, 1.43, 1.43, 1.43, 1.43%	No actions planned for 2016.	Two feeder breaker outages that resulted from the failure of a 12kV underground exit circuit at the station. These two outages accounted for 56% of SAIFI for 2015. The first outage happened when the underground failed and a temporary fix was used to restore service. This Equipment Failure outage accounted for 30% of CMI. The other outage was Scheduled Company to permanently convert the exit circuit to overhead. This outage accounted for 8% of CMI.
41	Hazard	3302703	Hazard	Hazard	East Main Street, Hazard	Hazard, Woodland Park, Oakhurst Ave, Skyline Dr	11.2	692	11/19/2015	169.3	259.2	3.162	2.309	Equipment Failure, Other, Tree Outside ROW, Error - Field, Scheduled Company, Tree Inside ROW, Tree Removal (Non AEP), Unknown (NonWeather), Vehicle Accident (Non AEP), Vine, Weather - Lightning, Weather - High Winds	40.00, 12.00, 12.00, 4.00, 4.00, 4.00, 4.00, 4.00, 4.00, 4.00, 4.00, 4.00%	No actions planned for 2016.	Three Equipment Failure outages contributed to 71% of the CMI for this circuit. One was a pole in the breaker zone, one was a connection that failed during swithing and one was an open loop on spacer cable.
42	Hazard	3307303	Bulan	Lotts Creek	Carriage Lane, Bulan	Bulan	2.13	28	2/15/2013	297.5	55.9	0.965	1.036	Other	100.00%	No actions planned for 2016.	Small circuit with only one outage during the entire year.
43	Hazard	3308002	Jackson	Panbowl	Cripple Creek Rd, Jackson	Part of Jackson, Part of Quicksand, Lick Branch	31.66	1,025	8/30/2014	385.4	377.3	1.987	3.231	Equipment Failure, Tree Outside ROW, Scheduled Company, Other, Unknown (Non Weather), Weather - Flood/Slide, Animal - Bird, Weather - Unknown, Vehicle Accident (Non AEP), Vine, Weather - Lightning, Weather - High Winds	18.87, 18.87, 16.98, 13.21, 11.32, 5.66, 3.77, 3.77, 1.89, 1.89, 1.89, 1.89%	No actions planned for 2016.	One vehicle accident and one switch failure led to two feeder breaker outages. These two outages accounted for 62% of the SAIFI in 2015.
44	Hazard	3308401	Beckham	Hindman	SR 899, Beckham	Dwarf, Hindman, Emmalena	101.69	1,860	3/1/2012	607.6	493.2	2.89	4.404	Equipment Failure, Other, Tree Outside ROW, Scheduled Company, Tree Inside ROW, Unknown (Non Weather), Vehicle Accident (Non AEP), Tree Removal (Non AEP), Vine, Weather - Unknown, Weather - High Winds, Animal - Non Bird, Overload, Scheduled Outside Request	28.74, 16.09, 14.94, 8.05, 6.90, 6.90, 5.75, 2.30, 2.30, 2.30, 2.30, 1.15, 1.15, 1.15%	Additional switches will be installed to enable more partial restoration during outages. Tree trim in 2016.	Four out of 87 outages on this circuit contributed to 65% of SAIFI and 67% of CMI during 2015. These outage causes were 2 Vehicle Accident, one Tree Outside ROW and one Equipment Failure (cutout).
45	Hazard	3308402	Beckham	Carr Creek	SR 899, Beckham	Brinkley, Mallie, Pippa Passes, Spider, Bath, Litt Carr, Hollybush	117.33	1,910	3/14/2014	737.0	1043.4	3.508	4.49	Tree Outside ROW, Equipment Failure, Other, Scheduled Company, Tree Inside ROW, Vehicle Accident (Non AEP), Unknown (Non Weather), Tree Removal (Non AEP), Weather - Unknown, Animal - Bird, Customer Equipment, Error - Field, Fire - AEP, or Affecting >1 Cust, Overload, Vine	25.58, 23.26, 10.85, 10.85, 8.53, 6.20, 5.43, 2.33, 2.33, 0.78, 0.78, 0.78, 0.78, 0.78, 0.78%	Additional switches will be installed to enable more partial restoration during outages.	Tree Outside ROW contributed to 35% of SAIFI and 43% of CMI and Equipment Failure contributed to 18% of SAIFI and 24% of CMI during 2015. The ROW was widened through a patch of pine trees where several trees had caused outages.
46	Hazard	3309002	Jeff	Jeff	SR 7, Jeff	Jeff, Kenmont	5.78	123	3/14/2014	95.8	194.4	1.118	1.098	Equipment Failure, Tree Inside ROW, Tree Outside ROW, Unknown (Non Weather), Vine	20.00, 20.00, 20.00, 20.00, 20.00%	No actions planned for 2016.	This is a small circuit with only five outages the entire year. One feeder breaker outage that was caused by a failed insulator contributed to 91% of SAIFI and 54% of CMI.
47	Hazard	3309101	Whitesburg	Whitesburg	SR 931, Whitesburg	Whitesburg	9.97	609	12/31/2013	71.3	118.2	0.788	0.901	Scheduled Company, Equipment Failure, Other, Vine, Tree Inside ROW, UG Const/Dig - Ins (Non AEP), Weather - Unknown	24.00, 20.00, 20.00, 16.00, 8.00, 8.00, 4.00%	No actions planned for 2016.	This circuit has performed well compared to other circuits. Six Scheduled Company outages contributed to 50% of SAIFI and to 37% of CMI.
48	Hazard	3309102	Whitesburg	Hospital	SR 931, Whitesburg	Whitesburg, including hospital	8.12	226	9/21/2013	97.4	90.4	0.679	1.031	Tree Outside ROW, Equipment Failure, Other, Vehicle Accident (Non AEP), Weather - Lightning	33.33, 16.67, 16.67, 16.67, 16.67%	No actions planned for 2016.	This circuit has performed well compared to other circuits. Two Tree Outside ROW contributed to 97% of SAIFI and to 89% of CMI.

	District	Station/ Circuit Number	Station Name	Circuit Name	Station Location	Area Served	Circuit Length (Mi)	Number of Customers Served	Last Circuit R/W Trim Date Completed	Circuit 5 Year Avg SAIDI	Reporting Year SAIDI	Circuit 5 Year Avg SAIFI	Reporting Year SAIFI	Outage Causes	% of Outages Due to Causes Listed in Previous Column	List of Corrective Actions	Comments
49	Hazard	3309103	Whitesburg	Cowan	SR 931, Whitesburg	Whitesburg	43.53	897	1/6/2015	654.4	497.3	3.235	3.540	Equipment Failure, Scheduled Company, Tree Outside ROW, Other, Tree Inside ROW, Weather Unknown, Unknown (Non Weather), Animal - Non Bird, Tree Removal (Non AEP), Weather - Flood/Slide	26.92, 15.38, 15.38, 11.54, 9.62, 7.69, 5.77, 3.85, 1.92, 1.92%	No actions planned for 2016.	Two feeder breaker outages, one due to Weather - Unknown contributed to 28% of SAIFI and one due to Scheduled Company contributed to 56% of SAIFI. Full circuit reclear finished in 2015.
50	Hazard	3309302	Vicco	Jeff	Rowdy Hollow, Vicco	Vicco, Happy Circle, Scuddy	84.66	1,389	Re-clearing started	516.5	546.7	2.562	1.880	Equipment Failure, Unknown (Non Weather), Tree Inside ROW, Tree Outside ROW, Vine, Other, Scheduled Company, Fire - AEP, or Affecting >1 Cust, Weather - Lightning, Animal - Bird, Weather - Flood/Slide, Weather - Unknown, Error - Field, Tree Removal (Non AEP), Vandalism	20.59, 15.69, 14.71, 10.78, 8.82, 7.84, 4.90, 3.92, 3.92, 1.96, 1.96, 1.96, 0.98, 0.98, 0.98%	Start reclear in 2016. Complete project to move trouble section closer to road.	Tree Inside ROW and Tree Outside ROW causes contributed to 17% of CMI. Four Fire - AEP outages contributed to 16% of CMI. Two Weather - Flood/Slide outages contributed to 17% of CMI.
51	Hazard	3309901	Slemp	Defeated Creek	SR 699, Slemp	Line Fork	13.42	33	Prior to 2010	1844.8	2,143.3	6.554	4.636	Abnormal Feed, Scheduled Company, Unknown (Non Weather), Other, Tree Outside ROW	25.00, 25.00, 25.00, 12.50, 12.50%	Tree trim in 2016.	Two Abnormal Feed outages that occurred when this circuit was fed from the Daisy Leatherwood Circuit contributed to 31% of the CMI. The circuit was restored to the normal feed from Slemp Station in 2015.
52	Hazard	3309902	Slemp	Leatherwood	SR 699, Slemp	Cornettsville, Slemp, Yeaddiss Road	71.29	864	Re-clearing started	1106.9	868.3	3.599	4.073	Tree Outside ROW, Equipment Failure, Other, Tree Inside ROW, Tree Removal (Non AEP), Scheduled Company, Unknown (Non Weather), Weather - Unknown, Animal - Non Bird, Cust Equipment, Error - Field, Vehicle Accident (Non AEP), Vine, Weather - High Winds	34.25, 15.07, 9.59, 8.22, 8.22, 6.85, 5.48, 4.11, 1.37, 1.37, 1.37, 1.37, 1.37, 1.37%	Start re-clearing in 2016.	Tree Outside ROW outages contributed to 43% of SAIFI on this circuit during 2015.
53	Hazard	3309903	Slemp	Beech Fork	SR 699, Slemp	SR 699, Old Beech Fork Road	1.78	3	12/15/2015	284.0	301	1.500	2.000	Equipment Failure	100.00%	No actions planned for 2016.	Two feeder breaker outages due to Equipment Failure contributed to 100% of the SAIFI and 100% of the CMI on this circuit in 2015. Both outages were due to a failed voltage regulator in the station and they occurred on the same day. The regulator was replaced during the second outage.
54	Hazard	3309904	Slemp	Royal Diamond	SR 699, Slemp	SR 463, Stony Fork Road	2.3	3	12/15/2015	304.3	299	0.867	2.000	Equipment Failure	100.00%	No actions planned for 2016.	Two feeder breaker outages due to Equipment Failure contributed to 100% of the SAIFI and 100% of the CMI on this circuit in 2015. Both outages were due to a failed voltage regulator in the station and they occurred on the same day. The regulator was replaced during the second outage.
55	Hazard	3310501	Haddix	Quicksand	SR 1110, Haddix	Haddix, Tumbling Branch, Lost Creek, Trace Branch, Orchard Hollow, Hardshell, Quicksand, Saldee, Noctor, Rousseua	201.96	2,072	Re-clearing started	1031.8	1483.6	4.387	5.695	Tree Outside ROW, Equipment Failure, Tree Inside ROW, Other, Unknown (Non Weather), Weather - Unknown, Weather - Flood/Slide, Scheduled Company, Vine, Error - Field, Vehicle Accident (Non AEP), Customer Equipment, Tree Removal (Non AEP), Weather - High Winds, Animal - Non Bird, Contamination/Flashover, Error - Operations, Fire - AEP, or Affecting > 1 Cust, Foreign Object (Non Animal)	32.95, 15.61, 10.40, 8.09, 6.94, 5.20, 4.62, 2.89, 2.89, 2.31, 1.73, 1.16, 1.16, 1.16, 0.58, 0.58, 0.58, 0.58, 0.58%	Complete a large capital project (\$1.9M) to install a new feeder breaker at Haddix Station and construct several miles of overhead line to split this large circuit into two circuits. Complete another project to move a troubled section of line closer to the road.	Tree Outside ROW outages contributed to 28% of SAIFI and to 40% of CMI in 2015. Completed 55 miles of tree trim in 2015.
56	Hazard	3311101	Stinnett	Redbird	Greasy Creek Road, Stinnett	Essie, Stinnett, Roark, Mozelle	121.07	1,300	2/1/2012	1174.3	661.3	4.213	4.928	Equipment Failure, Tree Outside ROW, Unknown (Non Weather), Vine, Weather - Unknown, Scheduled Company, Other, Tree Inside ROW, Weather - Lightning, Weather High Winds, Animal - Bird, Error - Field, Foreign Object (Non Animal), Scheduled Outside Request, Weather - Flood/Slide	21.95, 21.95, 12.20, 10.98, 7.32, 4.88, 3.66, 3.66, 3.66, 3.66, 1.22, 1.22, 1.22, 1.22, 1.22%	Tree trim in 2016.	Two Scheduled Company feeder breaker outages that were required to transfer load to and from the Leslie Wooton Circuit for station maintenance contributed to 41% of SAIFI.
57	Hazard	3311701	Shamrock	Shamrock	Near Harveyton Road, Bonnyman	Hazard, Bonnyman	54.64	914	3/31/2014	463.6	562.4	2.686	2.01	Tree Outside ROW, Equipment Failure, Other, Scheduled Company, Tree Inside ROW, Fire - AEP, or Affecting > 1 Cust, Weather - Ice, Unknown (Non Weather), Vine, Weather - High Winds	28.26, 23.91, 13.04, 8.70, 8.70, 6.52, 4.35, 2.17, 2.17, 2.17%	No actions planned for 2016.	One Tree Outside ROW outage contributed to 34% of the CMI on this circuit in 2015.

	District	Station/ Circuit Number	Station Name	Circuit Name	Station Location	Area Served	Circuit Length (Mi)	Number of Customers Served	Last Circuit R/W Trim Date Completed	Circuit 5 Year Avg SAIDI	Reporting Year SAIDI	Circuit 5 Year Avg SAIFI	Reporting Year SAIFI	Outage Causes	% of Outages Due to Causes Listed in Previous Column	List of Corrective Actions	Comments
58	Hazard	3312201	Engle	Industrial Park	Coal Fields Industrial Drive, Engle	Coal Fields Industrial Park	4.11	22	12/31/2013	99.0	135.8	0.697	1.000	Equipment Failure	100.00%	No actions planned for 2016.	Only one outage the entire year due to a failed crossarm.
59	Hazard	3312901	Jenkins	Kona	Gateway Industrial Park Road, Jenkins	Jenkins, Kona	26.0	496	5/1/2012	198.8	388.9	1.651	2.520	Tree Outside ROW, Equipment Failure, Unknown (Non Weather), Other, Weather - Unknown, Fire - AEP, or Affecting > 1 Cust, Tree Inside ROW, Vehicle Accident (Non AEP)	35.14, 18.92, 18.92, 10.81, 8.11, 2.70, 2.70, 2.70%	No actions planned for 2016.	One feeder breaker outage caused by Tree Outside ROW contributed to 40% of SAIFI and to 49% of CMI.
60	Hazard	3314401	Mayking	Ermine	US 119, Mayking	Mayking, Ermine, Eolia	28.82	624	10/30/2015	248.3	299.9	2.448	2.346	Equipment Failure, Unknown (Non Weather), Tree Outside ROW, Other, Tree Inside ROW, Vine, Scheduled Company, Weather - Unknown, Foreign Object (Non Animal), Weather - Flood/Slide	21.74, 21.74, 15.22, 13.04, 8.70, 6.52, 4.35, 4.35, 2.17, 2.17%	Install a new recloser to improve sectionalizing.	One Weather - Flood/Slide outage contributed to 52% of CMI on this circuit in 2015.
61	Pikeville	3400101	Allen	Distribution	Off KY 1428 on Gas Fork Rd. in Allen, KY	Allen, US 23, Ivel, Dwale	27.48	825	1/30/2011	78.2	281.9	0.351	2.422	Equipment Failure, Tree Outside ROW, Tree Inside ROW, Fire - AEP, or Affecting > 1 Cust, Unknown (Non Weather), Weather - High Winds, Other, Weather - Unknown	22.33, 22.33, 20.00, 10.00, 10.00, 6.67, 3.33, 3.33%	Work with forestry to target vegetation issues	Tree Outside ROW outages contributed to 80% of SAIFI and to 77% of CMI for the circuit in 2015.
62	Pikeville	3400301	Betsy Layne	Mud Creek	Off US 23, Scalf Road, Betsy Layne	Ky 979 Big Mud Creek Little Mud Toler	76.73	1,662	4/2/2011	540.8	714.3	3.569	2.864	Equipment Failure, Unknown (Non Weather), Tree Outside ROW, Other, Tree Inside ROW, Vehicle Accident (Non AEP), Fire - AEP, or Affecting > 1 Cust, Scheduled Company, Vine Weather - Lightning, Animal - Non Bird, Error - Field, Other Utility, Vandalism	25.35, 19.72, 15.49, 7.04, 5.63, 5.63, 4.23, 4.23, 4.23, 2.82, 1.41, 1.41, 1.41, 1.41%	Work with forestry to target vegetation issues.	Tree Outside ROW and Tree Inside ROW outages contributed to 36% of CMI. Four Vehicle Accident (Non AEP) outages contributed to 25% of CMI.
63	Pikeville	3400302	Betsy Layne	Tram	Off US 23, Scalf Road, Betsy Layne	US 23, Mare Creek, Tram, Toms Creek	34.45	915	Prior to 2010	253	329.8	1.296	1.339	Tree Inside ROW, Unknown (Non Weather), Equipment Failure, Tree Outside ROW, Scheduled Company, Other, Vine, Weather - Unknown	26.92, 19.23, 17.31, 13.46, 11.54, 7.69, 1.92, 1.92%	Work with forestry to target vegetation issues.	Tree Inside ROW and Tree Outside ROW outages contributed to 46% of SAIFI and to 35% of CMI. One Equipment Failure outage contributed to 38% of SAIFI and to 54% of CMI.
64	Pikeville	3400303	Betsy Layne	Harold	Off US 23, Scalf Road, Betsy Layne	US 23, Stoney Brook Dr, Harold, Hurricane Rd, Kelsey E Friend Blvd, Caney Crk Rd	55.68	1,616	6/1/2011	244.3	297.2	1.931	1.593	Tree Inside ROW, Unknown (Non Weather), Tree Outside ROW, Equipment Failure, Other, Vehicle Accident (Non AEP), Vine, Weather- Flood/Slide, Scheduled Company, Other Utility, Weather - Lightning	29.73, 17.57, 16.22, 14.86, 4.05, 4.05, 4.05, 4.05, 2.70, 1.35, 1.35%	Work with forestry to target vegetation row issues	Tree Outside ROW outages contributed to 46% of CMI for this circuit in 2015.
65	Pikeville	3400601	Burton	Bevinsville	Off SR 122, Burton	SR 122, SR 1498, Jaks Creek, SR 1091, Rileys Br	19.71	365	3/28/2014	659.4	473.8	2.385	3.175	Scheduled Company, Equipment Failure, Tree Removal (Non AEP), Customer Equipment, Fire - AEP, or Affecting > 1 Cust, Other, Tree Outside ROW, Unknown (Non Weather)	28.57, 21.43, 14.29, 7.14, 7.14, 7.14, 7.14, 7.14%	No actions planned for 2016.	Scheduled Company outages contributed to 65% of SAIFI but only 6% of CMI. One feeder breaker outage that occurred when a Transmission static wire fell across the distribution contributed to 31% of SAIFI and to 89% of CMI.
66	Pikeville	3400702	Driffin	Yellow Hill	Just off SR 80 and US 460 on Road Crk Rd	SR 80, US 460, Jimmie Creek, Harless Crk	12.26	291	12/30/2011	921.4	1896.9	2.074	6.251	Unknown (Non Weather), Equipment Failure, Tree Inside ROW, Tree Outside ROW, Weather - Flood/Slide, Other, Transmission Information Needed	31.25, 18.75, 12.50, 12.50, 12.50, 6.25, 6.25	Complete a storm hardening project to relocate a section of inaccessible line. Tree trim in 2016.	Five feeder breaker outages occurred in 2015. One Equipment Failure feeder outage caused by a broken crossarm in an inaccessible location contributed to 20% of SAIFI and to 62% of CMI. One Tree Outside ROW feeder outage contributed to 20% of SAIFI and to 14% of CMI. One Unknown (Non Weather) feeder outage contributed to 20% of SAIFI and to 9% of CMI. One feeder outage that was caused by loss of transmission feed contributed to 20% of SAIFI and to 5% of CMI. One Weather - Flood/Slide feeder outage contributed to 20% of SAIFI and to 4% of CMI.
67	Pikeville	3401001	Elwood	Dorton	SR 610 near Elswicks Br	SR 1469, Long Fork Road, Indian Creek Road, Little Robinson Creek, Virgie	43.25	840	12/31/2011	540.1	614.8	3.142	5.437	Equipment Failure, Tree Outside ROW, Unknown (Non Weather), Tree Inside ROW, Scheduled Company, Vine, Other, Animal - Non Bird, Customer Equipment, Fire - AEP, or Affecting > 1 Cust, Overload, Tree Removal (Non AEP)	29.09, 16.36, 16.36, 10.91, 9.09, 5.45, 3.64, 1.82, 1.82, 1.82, 1.82, 1.82%	Planned cutout replacements in 2016. Tree trim in 2016.	Equipment Failure outages contributed to 29% of SAIFI and to 54% of CMI. Scheduled Company outages contributed to 37% of SAIFI but only 7% of CMI.

	District	Station/ Circuit Number	Station Name	Circuit Name	Station Location	Area Served	Circuit Length (Mi)	Number of Customers Served	Last Circuit R/W Trim Date Completed	Circuit 5 Year Avg SAIDI	Reporting Year SAIDI	Circuit 5 Year Avg SAIFI	Reporting Year SAIFI	Outage Causes	% of Outages Due to Causes Listed in Previous Column	List of Corrective Actions	Comments
68	Pikeville	3401002	Elwood	Virgie - Indian Creek	SR 610 near Elswicks Br	SR 1469, Long Fork Road, Indian Creek Road, Little Robinson Creek, Virgie	73.84	1,723	12/31/2011	489	1053.8	2.569	6.729	Equipment Failure, Tree Outside ROW, Tree Inside ROW, Unknown (Non Weather), Scheduled Company, Vine, Other, Weather - Unknown, Vandalism, Vehicle Accident (Non AEP), Weather - Lightning, Overload, Weather - Flood/Slide	23.29, 17.81, 15.07, 8.22, 6.85, 6.85, 5.48, 5.48, 2.74, 2.74, 2.74, 1.37, 1.37%	Planned cutout replacements in 2016. Tree trim in 2016.	Two feeder breaker outages due to Equipment Failure (both due to insulators) contributed to 30% of SAIFI and to 52% of CMI. Two feeder breaker outages due to Scheduled Company (one to switch in a mobile sub and one to switch out a mobile sub) contributed to 30% of SAIFI but only 4% of CMI.
69	Pikeville	3401102	Falcon	Salyersville	Highway 460 W, Salyersville	Falcon Road Salyersville Elsie	44.77	1,245	12/15/2015	280.8	652.5	1.638	2.92	Equipment Failure, Tree Inside ROW, Tree Outside ROW, Animal - Non Bird, Vehicle Accident (Non AEP), Scheduled Company, Unknown (Non Weather), Animal - Bird, Error Operations, Other, Overload, Other Utility, Weather - Lightning, Customer Equipment, Fire - AEP, or Affecting > 1 Cust, Foreign Object (Non Animal), Tree Removal (Non AEP), Vine, Weather - Unknown	18.75, 12.50, 10.94, 7.81, 7.81, 6.25, 6.25, 4.69, 3.13, 3.13, 3.13, 3.13, 3.13, 1.56, 1.56, 1.56, 1.56, 1.56, 1.56%	No actions planned for 2016.	One Tree Out of ROW outage contributed to 34% of SAIFI and to 21% of CMI. One feeder breaker outage, Weather - Unknown contributed to 34% of SAIFI and to 50% of CMI.
70	Pikeville	3401103	Falcon	Burning Fork	Highway 460 W, Salyersville	Highway 460 W, Salyersville	44.77	1,411	5/1/2015	331.4	935.3	1.596	3.691	Equipment Failure, Tree Outside ROW, Scheduled Company, Vehicle Accident (Non AEP), Animal - Non Bird, Tree Inside ROW, Other, Fire - AEP, or Affecting > 1 Cust, Unknown (Non Weather), Vandalism, Vine, Weather - Lightning, Weather - Unknown, Weather - High Winds, Animal - Bird, Customer Equipment, Error - Operations, Tree Removal (Non AEP)	30.95, 13.10, 8.33, 8.33, 7.14, 7.14, 3.57, 2.38, 2.38, 2.38, 2.38, 2.38, 2.38, 1.19, 1.19, 1.19, 1.19%	Planned cutout replacements in 2016.	Equipment Failure outages contributed to 20% of SAIFI and to 30% of CMI. Half of the equipment failures were cutout failures. Tree Out of ROW and Tree Inside ROW outages contributed to 34% of SAIFI and 48% of CMI.
71	Pikeville	3401301	Fleming	Neon	SR 343, Fleming Rd, off Arlie Hall Dr	SR 343, Fleming Rd, SR 317, Fleming Neon	20.55	746	Scheduled for 2016	471.9	672.1	2.077	1.192	Equipment Failure, Tree Outside ROW, Unknown (Non Weather), Other, Scheduled Company, Animal - Non Bird, Fire - AEP, or Affecting >1 Cust, Overload, Tree Inside ROW, Weather - Unknown	33.33, 22.22, 11.11, 7.41, 7.41, 3.70, 3.70, 3.70, 3.70, 3.70%	Upgrading existing circuit reclosers to improve sectionalizing coordination. Tree trim in 2016.	Six Tree Outside ROW outages contributed to 97% of the CMI on this circuit.
72	Pikeville	3401801	Index	Distribution	Off Liberty Road, West Liberty	West Liberty Hwy 460 Trace Br. Road Johnson Fork	54.96	630	Scheduled for 2016	368.1	807.5	1.924	1.913	Tree Outside ROW, Equipment Failure, Animal - Non Bird, Tree Inside ROW, Unknown (Non Weather), Weather - Unknown, Animal - Bird, Scheduled Company, Vandalism, Weather - Lightning	31.43, 28.57, 11.43, 5.71, 5.71, 5.71, 2.86, 2.86, 2.86, 2.86%	Tree trim in 2016.	Tree Outside ROW outages contributed to 73% of SAIFI and to 88% of CMI on this circuit.
73	Pikeville	3401802	Index	Hospital	Off Liberty Road, West Liberty	Liberty Road, US 460, Old Hwy 172, Park Hill Blvd, parts of West Liberty	20.1	703	Prior to 2010	209.7	158.2	1.603	1.997	Equipment Failure, Animal - Non Bird, Other, Scheduled Outside Request, Tree Inside ROW, Animal - Bird, Customer Equipment, Error Operations, Scheduled Company, Tree Outside ROW, Weather - Ice	26.32, 10.53, 10.53, 10.53, 10.53, 5.26, 5.26, 5.26, 5.26, 5.26, 5.26%	Work closely with forestry to target vegetation row issues.	Two Scheduled Outside Request outages and two Tree Inside ROW outages contributed to 91% of SAIFI and 79% of CMI.
74	Pikeville	3402001	Keyser	Thompson Road	Off US 23, Stone Coal, Pikeville Service Center	US 23, Scott Addition, Coal Run Hill, Lykins Crk, Thompson Rd, Quail Walk	17.04	520	Prior to 2010	237	281.8	2.503	1.583	Equipment Failure, Tree Inside ROW, Unknown (Non Weather), Tree Outside ROW, Animal - Non Bird, Foreign Object (Non Animal), Scheduled Company	30.43, 26.09, 17.39, 13.04, 4.35, 4.35, 4.35%	Planned cutout replacements in 2016.	Equipment Failure outages contributed to 62% of CMI.
75	Pikeville	3402002	Keyser	Stonecoal	Off US 23, Stone Coal, Pikeville Service Center	US 23, Stone Coal Road, US 119, Town Mountain Road, Zebulon, Buckley Creek	37.59	770	Prior to 2010	322.7	347.6	2.34	1.299	Equipment Failure, Tree Inside ROW, Tree Outside ROW, Scheduled Company, Animal - Non Bird, Customer Equipment, Other, Tree Removal (Non AEP), Unknown (Non Weather), Vine, Weather - High Winds	32.00, 16.00, 16.00, 8.00, 4.00, 4.00, 4.00, 4.00, 4.00, 4.00, 4.00%	Planned cutout replacements in 2016.	Equipment Failure outages contributed to 90% of CMI.
76	Pikeville	3402003	Keyser	Mullins	Off US 23, Stone Coal, Pikeville Service Center	US 23, Mossy Bottom, Cowpen Rd, Weddington Branch, Mullins	29.76	1,095	8/13/2015	367.6	823.1	3.038	2.403	Equipment Failure, Tree Inside ROW, Unknown (Non Weather), Tree Outside ROW, Scheduled Company, Weather - Unknown, Customer Equipment, Other, Vehicle Accident (Non AEP), Weather - Flood/Slide, Error - Field, Fire - AEP, or Affecting > 1 Cust, Weather - Ice	20.00, 16.36, 14.55, 12.73, 9.09, 7.27, 3.64, 3.64, 3.64, 3.64, 1.82, 1.82, 1.82%	Planned cutout replacements in 2016.	Equipment Failure outages contributed to 40% of CMI. Tree Outside of ROW outages contributed to 38% of CMI.

	District	Station/ Circuit Number	Station Name	Circuit Name	Station Location	Area Served	Circuit Length (Mi)	Number of Customers Served	Last Circuit R/W Trim Date Completed	Circuit 5 Year Avg SAIDI	Reporting Year SAIDI	Circuit 5 Year Avg SAIFI	Reporting Year SAIFI	Outage Causes	% of Outages Due to Causes Listed in Previous Column	List of Corrective Actions	Comments
77	Pikeville	3402204	McKinney	Maytown	Off Ky 122 on Coon Hollow Rd.	McDowell Minnie Drift	35.73	525	Scheduled for 2016	293.5	533.1	1.912	4.251	Tree Outside ROW, Equipment Failure, Scheduled Company, Tree Inside ROW, Unknown (Non Weather), Animal - Non Bird, Animal - Bird, Fire - AEP, or Affecting > 1 Cust, Foreign Object (Non Animal), Other, Vine, Weather - Unknown	33.33, 13.89, 13.89, 13.89, 5.56, 2.78, 2.78, 2.78, 2.78, 2.78, 2.78%	Work closely with forestry to target vegetation issues.	Tree Outside ROW outages contributed to 37% of SAIFI and to 63% of CMI. Scheduled Company outages contributed to 47% of SAIFI and to 25% of CMI.
78	Pikeville	3403001	Pikeville	City	Just off Hambley Blvd and Williams Dr, Pikeville	N Bypass Rd, Northmont Rd, Town Mountain Road, Chloe Road, Parts of City Of Pikeville	23.92	1,224	12/15/2015	193.7	793.7	1.294	3.304	Equipment Failure, Tree Outside ROW, Unknown (Non Weather), Tree Inside ROW, Tree Removal (Non AEP), Weather - Flood/Slide, Animal - Non Bird, Error - Operations, Fire - AEP, or Affecting > 1 Cust, Scheduled Company, Vehicle Accident (Non AEP), Vine, Weather - Unknown	33.33, 20.83, 12.50, 10.42, 4.17, 4.17, 2.08, 2.08, 2.08, 2.08, 2.08, 2.08%	Planned cutout replacements in 2016. Tree trim in 2016.	Tree Outside ROW outages contributed to 38% of SAIFI and 45% of CMI. One Vehicle Accident (Non AEP) outage contributed to 30% of SAIFI and to 7% of CMI. Equipment Failure outages contributed to 8% of SAIFI and to 22% of CMI.
79	Pikeville	3403002	Pikeville	Main Street	Just off Hambley Blvd and Williams Dr, Pikeville	Hambley Blvd, Smith Hill, Peach Orchard Dr, Kentucky Ave, Pikeville	7.52	733	4/11/2014	128.1	166.1	1.103	1.588	Equipment Failure, Tree Outside ROW, Unknown (Non Weather), Other, Scheduled Company, Vandalism, Animal - Non Bird, Weather - Unknown	24.00, 20.00, 20.00, 12.00, 8.00, 8.00, 4.00, 4.00%	No actions planned for 2016.	One feeder breaker outage due to Weather - Unknown contributed to 63% of SAIFI and 36% of CMI on this circuit.
80	Pikeville	3403201	Beaver Creek	Ligon	Junction of KY 979 and KY 122	Big Mud Creek Beaver Teaberry	79.89	1,604	10/15/2015	451.9	599.2	2.57	3.324	Equipment Failure, Tree Outside ROW, Scheduled Company, Other, Tree Inside ROW, Vine, Tree Removal (Non AEP), Unknown (Non Weather), Fire - AEP, or Affecting > 1 Cust, Animal - Non Bird, Customer Equipment, Error - Operations, Weather - Lightning	24.68, 14.29, 11.69, 10.39, 7.79, 7.79, 6.49, 6.49, 5.19, 1.30, 1.30, 1.30, 1.30%	No actions planned for 2016.	One Equipment Failure outage that was caused by a failed insulator contributed to 25% of SAIFI and to 23% of CMI. One feeder breaker outage was caused by Equipment Failure (station was interrupted when a station capacitor bank failed) contributed to 30% of SAIFI and to 34% of CMI.
81	Pikeville	3403302	Prestonsburg	University	Off University Dr along Margaret St, Prestonsburg	SR 321, University Dr, US 23, Cassidy Dr	18.46	795	1/31/2013	376.3	700.6	1.245	1.794	Equipment Failure, Animal - Non Bird, Tree Outside ROW, Unknown (Non Weather), Customer Equipment, Other, Animal - Bird, Fire - AEP, or Affecting > 1 Cust, Tree Removal (Non AEP), Weather - Ice	29.03, 12.90, 12.90, 12.90, 9.68, 9.68, 3.23, 3.23, 3.23, 3.23%	No actions planned for 2016.	One feeder breaker outage due to Equipment Failure (bad pole) contributed to 56% of SAIFI and 75% of CMI.
82	Pikeville	3403801	Second Fork	Distribution	Off SR 194 (Big Crk) onto 2nd Fork	2nd Fork, Big Creek, Spruce Fork	7.2	19	11/12/2011	208.5	355.1	1.322	1.737	Tree Inside ROW, Animal - Non Bird	60.00, 40.00%	No actions planned for 2016.	Three Tree Inside ROW outages contributed to 86% of SAIFI and 90% of CMI. Circuit performance compares well with other circuits.
83	Pikeville	3404301	Sidney	Big Creek	N Big Creek Rd, Sidney	N Big Creek Rd, Rockhouse Fork, Elkins Fork, Higgins Road, Long Branch Road	29.21	314	Prior to 2010	712.7	1118.6	3.524	6.455	Equipment Failure, Tree Outside ROW, Scheduled Company, Unknown (Non Weather), Tree Inside ROW, Animal - Non Bird, Vine, Weather - Lightning, Weather - Unknown	37.04, 18.52, 11.11, 11.11, 7.41, 3.70, 3.70, 3.70, 3.70%	No actions planned for 2016.	Five Tree Outside ROW outages contributed to 40% of SAIFI and to 36% of CMI. Three Scheduled Company outages contributed to 31% of SAIFI and to 33% of CMI.
84	Pikeville	3404302	Sidney	Coburn Moutain	N Big Creek Rd, Sidney	Big Creek, Bent Mountain Rd, US 119, Road Fk, Coburn Mountain	46.91	1,140	6/4/2011	583.3	1305.9	3.038	8.293	Equipment Failure, Tree Outside ROW, Scheduled Company, Weather - Unknown, Other, Unknown (Non Weather), Weather - Flood/Slide, Other Utility, Tree Inside ROW, Vehicle Accident (Non AEP), Error Field, Weather - Ice, Weather - Lightning	25.00, 23.21, 12.50, 7.14, 5.36, 5.36, 5.36, 3.57, 3.57, 3.57, 1.79, 1.79, 1.79%	Planned cutout replacements in 2016.	Six feeder breaker outages were the cause of the poor circuit reliability in 2015. Two that were caused by Tree Outside ROW contributed to 24% of SAIFI and to 18% of CMI. Two that were Scheduled Company to allow for station maintenance contributed to 24% of SAIFI and 14% of CMI. One was caused by Weather - Flood/Slide that contributed to 14% of SAIFI and to 14% of CMI. One was Unknown (Non Weather) that contributed to 14% of SAIFI and to 4% of CMI.
85	Pikeville	3407101	Topmost	Dema	Along SR 7, near Roaring Branch Road, Topmost	Along SR7 and Hwy 899 Little Doty Br.	36.89	544	Scheduled for 2016	157.6	404.2	0.974	1.702	Scheduled Company, Tree Inside ROW, Tree Outside ROW, Equipment Failure, Animal - Non Bird, Fire - Aep, or Affecting > 1 Cust, Other, Tree Removal (Non AEP)	21.74, 21.74, 21.74, 13.04, 8.70, 4.35, 4.35, 4.35%	Tree trim in 2016.	One feeder breaker outage was mostly responsible to the decline in circuit performance. The outage was Animal - Non Bird caused by a snake on a crossarm. This outage contributed to 59% of SAIFI and 45% of CMI.

	District	Station/ Circuit Number	Station Name	Circuit Name	Station Location	Area Served	Circuit Length (Mi)	Number of Customers Served	Last Circuit R/W Trim Date Completed	Circuit 5 Year Avg SAIDI	Reporting Year SAIDI	Circuit 5 Year Avg SAIFI	Reporting Year SAIFI	Outage Causes	% of Outages Due to Causes Listed in Previous Column	List of Corrective Actions	Comments
86	Pikeville	3407102	Topmost	Caney	Along SR 7, near Roaring Branch Road, Topmost	Roaring Br. Huff Br. Caney Creek.	4.41	1	Scheduled for 2016	22.2	2740.0	0.125	5.000	Weather - Flood/Slide	100.00%	Perform study to evaluate merit of rebuilding the damaged part of the circuit.	This circuit originally served 5 coal mining related customers. By year end, there was only one still in service. This caused the outage numbers to be off. A large slide caused two feeder breaker outages damaging several spans. The damaged section was isolated.
87	Pikeville	3407103	Topmost	Kite	Along SR 7, near Roaring Branch Road, Topmost	SR 7, Roaring Branch Road, Hall Branch Road, Mullins Branch Road	25.22	361	Scheduled for 2016	72.4	241.3	0.399	1.587	Equipment Failure, Weather - Flood/Slide, Scheduled Company, Tree Inside ROW, Tree Outside ROW, Customer Equipment, Other, Tree Removal (Non AEP), Unknown (Non Weather), Vandalism	22.22, 16.67, 11.11, 11.11, 11.11, 5.56, 5.56, 5.56, 5.56, 5.56%	Look for locations to relocate line away from possible slide areas.	One feeder breaker outage due to Tree Inside ROW contributed to 63% of SAIFI and to 40% of CMI. Three Weather - Flood/Slide outages contributed to 19% of SAIFI and to 45% of CMI.
88	Pikeville	3408304	Coleman	Calloway	Along Calloway Branch just off Right Fork of Peter Creek (Phelps 632 Road)	Calloway, Left Fork of Blackberry Rd, SR 1056, Upper Blackberry Rd, Middle Fk	36.34	555	12/15/2015	413.0	1635.7	1.731	4.609	Tree Outside ROW, Equipment Failure, Tree Inside ROW, Weather - Flood/Slide, Unknown (Non Weather), Vandalism, Error - Operations, Scheduled Company, Vine, Animal - Non Bird, Animal - Bird, Other, Weather - Unknown, Weather - High Winds	18.87, 16.98, 16.98, 15.09, 5.66, 5.66, 3.77, 3.77, 3.77, 1.89, 1.89, 1.89, 1.89, 1.89%	No actions planned for 2016.	One Equipment Failure caused by a failed cutout resulted in a feeder breaker outage that contributed to 22% of SAIFI and to 29% of CMI. One Weather - Flood/Slide caused a feeder breaker outage that contributed to 22% of SAIFI and to 20% of CMI. Five Tree Removal (Non AEP) outages contributed to 33% of SAIFI and 21% of CMI. Tree trim completed by the end of 2015.
89	Pikeville	3408402	Kimper	Grapevine	Along SR 194 near Hurricane Creek	SR 194 E, Grapevine, Ridge Line Rd, Left Fork Island Crk	35.53	634	Prior to 2010	710.9	865.8	3.811	4.502	Tree Inside ROW, Equipment Failure, Tree Removal (Non AEP), Unknown (Non Weather), Other, Tree Outside ROW, Scheduled Company, Animal - Non Bird, Animal - Bird, Vehicle Accident (Non AEP), Weather - Unknown	17.14, 14.29, 14.29, 14.29, 11.43, 11.43, 5.71, 2.86, 2.86, 2.86, 2.86%	No actions planned for 2016.	One feeder breaker outage caused by Equipment Failure, the station transformer, contributed to 22% of the SAIFI and to 31% of CMI. One feeder breaker outage caused by Tree Removal (Non AEP), contributed to 22% of SAIFI and 31% of CMI.
90	Pikeville	3409401	Feds Creek	Feds Creek	US Route 460, Lick Creek	S River Rd, Mouthcard; Feds creek Rd, Steele	41.25	848	9/30/2011	930.1	1500.9	3.341	5.139	Equipment Failure, Tree Outside ROW, Unknown (Non Weather), Vine, Scheduled Company, Other, Weather - Unknown, Tree Inside ROW, Tree Removal (Non AEP), Vehicle Accident (Non AEP), Weather - Lightning, Weather - High Winds	28.26, 23.91, 13.04, 8.70, 6.52, 4.35, 4.35, 2.17, 2.17, 2.17, 2.17, 2.17%	No actions planned for 2016.	Two outages caused most of the decline in circuit reliability. One Equipment Failure, a bad pole, caused a feeder breaker outage that contributed to 19% of SAIFI and 46% of CMI. One Vehicle Accident (Non AEP) caused a feeder breaker outage due to loss of transmission. A bulldozer had undercut a transmission pole which fell due to wind. This outage contributed to 19% of SAIFI and 5% of CMI.
91	Pikeville	3409502	Burdine	Levisa	Near US HWY 23 S, Jenkins	US 23, McPeaks Br, Marshalls Br, Elkhorn Crk	56.94	692	4/27/2012	768.9	935.1	3.944	5.496	Equipment Failure, Tree Outside ROW, Scheduled Company, Unknown (Non Weather), Weather - Flood/Slide, Animal Bus, Other, Tree Removal (Non AEP), Vine	30.56, 25.00, 13.89, 11.11, 8.33, 2.78, 2.78, 2.78, 2.78%	No actions planned for 2016.	Two feeder breaker outages were Scheduled Company to perform maintenance work in the station. These two outages contributed to 36% of SAIFI and 54% of CMI. One feeder breaker outage, Animal Bus, contributed to 18% of SAIFI and only 1% to CMI.
92	Hazard	3409503	Burdine	Jenkins/Shelby	Near US HWY 23 S, Jenkins	Jenkins, Burdine	8.24	355	8/23/2014	210.5	253.4	1.864	5.639	Scheduled Company, Equipment Failure, Unknown (Non Weather), Animal Bus, Tree Outside ROW, Tree Removal (Non AEP)	40.91, 36.36, 9.09, 4.55, 4.55, 4.55%	No actions planned for 2016.	Scheduled Company outages contributed to 72% of SAIFI and to 28% of CMI. These included two feeder breaker outages to perform station maintenance. One Tree Removal (Non AEP) outage contributed to 60% of CMI.
93	Pikeville	3410501	South Pikeville	Pikeville	Off US 23 and S Mayo Trl, in South Pikeville	S Mayo Trail, Hambley Blvd, Harold Branch, S College St	15.37	698	Scheduled for 2016	142.5	534.8	0.652	3.605	Equipment Failure, Tree Inside ROW, Tree Outside ROW, Unknown (Non Weather), Overload, Scheduled Company, Tree Removal (Non AEP), Vandalism, Vine, Weather - Unknown	31.25, 21.88, 18.75, 9.38, 3.13, 3.13, 3.13, 3.13, 3.13%	Tree trim in 2016.	One Equipment Failure outage (station transformer) contributed to 28% to SAIFI and 65% of CMI. One Vandalism outage (stolen grounds in station) contributed to 28% of SAIFI and 5% of CMI. Historically, this is a very reliable circuit.

	District	Station/ Circuit Number	Station Name	Circuit Name	Station Location	Area Served	Circuit Length (Mi)	Number of Customers Served	Last Circuit R/W Trim Date Completed	Circuit 5 Year Avg SAIDI	Reporting Year SAIDI	Circuit 5 Year Avg SAIFI	Reporting Year SAIFI	Outage Causes	% of Outages Due to Causes Listed in Previous Column	List of Corrective Actions	Comments
94	Pikeville	3410502	South Pikeville	Island Creek	Off US 23 and S Mayo Trl, in South Pikeville	Bob Amos, Island Creek, Left Fork Island Crk, Peach Orchard Br	40.66	918	4/11/2014	428.8	1298.4	1.875	3.779	Equipment Failure, Tree Outside ROW, Scheduled Company, Unknown (Non Weather), Tree Inside RoW, Vandalism, Other, Anormal Feed, Error - Field, Foreign Object (Non Animal), Vine	27.66, 25.53, 12.77, 8.51, 6.38, 6.38, 4.26, 2.13, 2.13, 2.13, 2.13%	Planned cutout replacements in 2016.	One Equipment Failure, station transformer, resulted in a feeder breaker outage that contributed to 30% of SAIFI and to 55% of CMI. Another outage caused by Abnormal Feed, contributed to 13% of SAIFI and to 16% of CMI. Vandalism caused one outage that contributed to 13% of SAIFI and to 10% of CMI.
95	Pikeville	3410503	South Pikeville	Hospital	Off US 23 and S Mayo Trl, in South Pikeville	US 23, S May Trl, Pikeville Methodist Hospital	5.44	175	4/26/2013	50.8	931.4	0.478	5.114	Unknown (Non Weather), Equipment Failure, Vandalism, Animal - Non Bird, Other, Scheduled Company, Tree Outside ROW, Vine	33.33, 20.00, 13.33, 6.67, 6.67, 6.67, 6.67, 6.67, 6.67%	No actions planned for 2016.	Two feeder breaker outages caused by Equipment Failure, station transformer, contributed to 40% of SAIFI and to 58% of CMI. One feeder breaker outage was Scheduled Company, to repair mobile substation, contributed to 20% of SAIFI and to 8% of CMI. Twp Vandalism outages contributed to 20% of SAIFI and 10% of CMI.
96	Pikeville	3410601	East Prestonsburg	Prestonsburg	Near S Lake Dr, Prestonsburg	South Lake Dr South East Prestonsburg	7.07	614	Scheduled for 2016	196.9	305.2	1.548	2.324	Equipment Failure, Tree Outside ROW, Customer Equipment, Error - Field, Tree Inside ROW, Unknown (Non Weather), Vehicle Accident (Non AEP), Vine	55.56, 11.11, 5.56, 5.56, 5.56, 5.56, 5.56, 5.56%	Tree trim in 2016.	One Vehicle Accident (Non AEP) caused a feeder breaker outage that contributed to 43% of SAIFI and to 11% of CMI. One Tree Inside ROW outage contributed to 24% of SAIFI and to 40% of CMI. One Tree Outside of ROW contributed to 17% of SAIFI and to 35% of CMI
97	Pikeville	3410602	East Prestonsburg	Lancer	Near S Lake Dr, Prestonsburg	S Lake Dr, Lake Rd, SR 1428, N Roberts Dr, S Roberts Dr, Goble Ln	25.35	978	3/31/2015	132.0	305.7	0.718	1.542	Other, Tree Outside ROW, Scheduled Company, Equipment Failure, Tree Inside ROW, Unknown (Non Weather), Animal - Non Bird, Error - Field, Tree Removal (Non AEP), Weather - Ice	21.28, 21.28, 12.77, 10.64, 10.64, 10.64, 4.26, 4.26, 2.13, 2.13%	Work closely with forestry to target vegetation row issues.	Trees Outside ROW outages contributed to 65% of SAIFI and to 62% of CMI.
98	Pikeville	3411401	Dewey	Inez	Lackey Branch Road	Inez, Airport Rd, Saltwell Rd, Coldwater Rd, Turkey Crk, SR 40, Blacklog Rd	173.32	2,880	Scheduled for 2016	759.0	1785.2	4.072	10.528	Tree Outside ROW, Equipment Failure, Tree Inside ROW, Scheduled Company, Vine, Other, Unknown (Non Weather), Weather - Flood/Slide, Weather - Unknown, Vehicle Accident (Non AEP), Weather - Lightning, Animal - Non Bird, Tree Removal (Non AEP), Error - Field, Error - Operations, Overload, Weather - Ice	25.91, 20.00, 14.55, 8.64, 6.82, 6.36, 6.36, 2.73, 2.27, 1.36, 1.36, 0.91, 0.91, 0.45, 0.45, 0.45, 0.45, 0.45%	Tree trim in 2016.	Tree Outside of ROW outages (including one feeder breaker outage) contributed to 34% of SAIFI and to 48% of CMI. Four other feeder breaker outages contributed to 38% of SAIFI and 17% of CMI. The causes of these four outages were: Equipment Failure (2), Weather - Lightning (1) and Weather - Flood/Slide.
99	Pikeville	3411802	Johns Creek	Raccoon	SR 194 (Johns Creek)	SR 194, Upper Johns Creek, Hurricane Creek, Raccoon Rd, Ridge Line Rd, Ramey Fork, Frozen Crk	84.8	1,760	Scheduled for 2016	612.8	848.2	3.535	7.182	Tree Inside ROW, Equipment Failure, Tree Outside ROW, Scheduled Company, Unknown (Non Weather), Weather - Flood/Slide, Animal - Non Bird, Tree Removal (Non AEP), Error - Field, Fire - AEP, or Affecting > 1 Cust, Other, Other Utility, Vine, Weather - Ice, Weather - Unknown	31.87, 21.98, 19.78, 5.49, 5.49, 3.30, 2.20, 2.20, 1.10, 1.10, 1.10, 1.10, 1.10, 1.10, 1.10%	Planned cutout replacements in 2016. Tree trim in 2016.	Five feeder breaker outages occurred in 2015 on this circuit. These five outages contributed to 70% of SAIFI and to 54% of CMI. The causes of these outages were: Weather - Flood/Slide, Tree Outside ROW, Other Utility, Equipment Failure and Scheduled.
100	Pikeville	3411901	Fords Branch	Shelby	Just off Fords Branch Rd along Old Shelbiana Road	S Mayo Trail, US 23, US 119, US 460, Chloe Rd, Red Creek Rd, Greasy Crk, Shelby	42.36	1,454	8/31/2012	272.4	319.6	1.866	2.785	Equipment Failure, Tree Out ROW, Unknown (Non Weather), Other, Tree Inside ROW, Vehicle Accident (Non AEP), Error - Operations, Fire - AEP, or Affecting > 1 Cust, Scheduled Company, Scheduled Outside Request, Tree Removal (Non AEP), Vandalism, Vine, Weather - Flood/Slide, Weather - Lightning	32.73, 20.00, 16.36, 5.45, 5.45, 3.64, 1.82, 1.82, 1.82, 1.82, 1.82, 1.82, 1.82, 1.82, 1.82, 1.82%	Planned cutout replacements in 2016. Tree trim in 2016.	Equipment Failure outages contributed to 74% of SAIFI and to 38% of CMI. These outages includes two feeder breaker outages caused by failed cutouts. Tree Outside of ROW outages contributed to 20% of SAIFI and to 56% of CMI.
101	Pikeville	3412901	Weeksbury	Distribution	Along SR 466 near Abe Fork	SR 466, Abe Fork, Highway 7 S, Caleb Fork, Muddy Gut Br, Mill Br	26.31	442	1/31/2014	423.9	1351.2	2.319	3.208	Equipment Failure, Tree Outside ROW, Vine, Other, Scheduled Company, Tree Removal (Non AEP), Unknown (Non Weather), Weather - Lightning	31.25, 25.00, 12.50, 6.25, 6.25, 6.25, 6.25, 6.25, 6.25%	No actions planned for 2016.	Four Tree Outside ROW outages contributed to 35% of SAIFI and to 79% of CMI. One Weather - Lightning outage that interrupted the transmission feed to the station contributed to 31% of SAIFI and to only 8% of the CMI.



	District	Station/ Circuit Number	Station Name	Circuit Name	Station Location	Area Served	Circuit Length (Mi)	Number of Customers Served	Last Circuit R/W Trim Date Completed	Circuit 5 Year Avg SAIDI	Reporting Year SAIDI	Circuit 5 Year Avg SAIFI	Reporting Year SAIFI	Outage Causes	% of Outages Due to Causes Listed in Previous Column	List of Corrective Actions	Comments
102	Pikeville	3414901	Fishtrap	Distribution	Along Island Creek Road off Grapevine Rd	Left and Right Fork of Island Creek	4.43	4	2/1/2012	653.3	876	2.400	3.500	Equipment Failure, Tree Outside ROW, Vehicle Accident (Non AEP)	33.33, 33.33, 33.33%	Tree trim in 2016.	There were only three outages on this circuit in 2015. One Tree Outside ROW outage contributed to 28% of SAIFI and to 73% of CMI.
103	Pikeville	3417601	New Camp	South Side	Off New Camp Rd, S. Williamson	US Hwy 119 N, Goody; State Hwy 292E, Aflex	10.09	313	12/4/2013	501.1	382.4	3.570	4.629	Equipment Failure, Tree Outside ROW, Scheduled Company, Unknown (Non Weather), Tree Inside ROW, Other, Vine	30.77, 30.77, 11.54, 11.54, 7.69, 3.85, 3.85%	No actions planned for 2016.	Two feeder breaker outages due to Scheduled Company contributed to 44% of SAIFI. One feeder breaker outage due to Equipment Failure contributed to 22% of SAIFI.
104	Pikeville	3417602	New Camp	Appalachian Regional Hospital	Off New Camp Rd, S. Williamson	Williamson; Turkey Creek	16.67	716	Prior to 2010	164.8	1046.6	1.897	6.915	Tree Outside ROW, Equipment Failure, Scheduled Company, Tree Inside ROW, Other, Unknown (Non Weather), Tree Removal (Non AEP), Weather - Flood/Slide, Weather - Lightning	38.24, 14.71, 14.71, 11.76, 5.88, 5.88, 2.94, 2.94, 2.94%	No actions planned for 2016.	Tree Outside ROW outages contributed to 56% of SAIFI and to 90% of CMI on this circuit.
105	Pikeville	3420001	Soft Shell	Vest	Raymond Smith Dr, Leburn	Softshell, Vest, Tina, Leburn	59.01	526	Scheduled for 2016	458.8	437.3	2.211	2.800	Equipment Failure, Tree Outside ROW, Scheduled Company, Unknown (Non Weather), Other, Weather - Unknown, Tree Inside ROW, Foreign Object (Non Animal), Scheduled Outside Request, Vine	23.53, 17.65, 14.71, 11.76, 8.82, 8.82, 5.88, 2.94, 2.94, 2.94%	Tree trim in 2016.	One feeder breaker outage due to Weather - Unknown contributed to 36% of SAIFI. Tree Outside of ROW outages contributed to 24% of SAIFI.
106	Pikeville	3420102	Mayo Trail	Euclid	Just off Euclid Ave along Ponderosa Drive	West Paintsville Euclid Ave.	19.59	1,498	Prior to 2010	344	342.6	2.125	2.611	Equipment Failure, Tree Inside ROW, Fire - AEP, or Affecting > 1 Cust, Scheduled Company, Tree Outside ROW, Other, Unknown (Non Weather), Weather - Lightning, Weather - Unknown, Error - Field, Overload, UG Const./Dig - ins (Non AEP), Vine	34.21, 10.53, 7.89, 7.89, 7.89, 5.26, 5.26, 5.26, 5.26, 2.63, 2.63, 2.63, 2.63%	Work with Forestry to eliminate Hazard trees and other vegetation issues.	One feeder breaker outage caused by Tree Inside ROW contributed to 39% of SAIFI and to 25% of CMI. Another feeder breaker outage caused by Weather - Unknown contributed to 39% of SAIFI and to 23% of CMI.
107	Pikeville	3420103	Mayo Trail	Davis Branch	Just off Euclid Ave along Ponderosa Drive	Hwy 40 E Thelma Mealy	33.37	1,033	Prior to 2010	252.7	222.2	0.672	1.455	Equipment Failure, Tree Outside ROW, Tree Inside ROW, Scheduled Company, Unknown (Non Weather), Weather - Flood/Slide, Animal - Non Bird, Animal - Bird, Error - Field, Tree Removal (Non AEP), Vandalism,Vine, Weather - Unknown	30.56, 25.00, 8.33, 5.56, 5.56, 5.56, 2.78, 2.78, 2.78, 2.78, 2.78, 2.78, 2.78%	Planned cutout replacements in 2016. Work closely with forestry to target vegetation row issues.	Tree Outside of ROW outages contributed to 53% of SAIFI and Equipment Failure outages contributed to 36% of the SAIFI. Cutouts represented 60 % of the Equipment Failures outages.