

COMMONWEALTH OF KENTUCKY  
BEFORE THE KENTUCKY STATE BOARD ON ELECTRIC GENERATION  
AND TRANSMISSION SITING

In the Matter of:

ELECTRONIC APPLICATION OF DUKE ENERGY	)	
OHIO, INC. FOR A CERTIFICATE OF	)	
CONSTRUCTION FOR TWO NEW 138 KILOVOLT	)	CASE NO.
NONREGULATED ELECTRIC TRANSMISSION	)	2025-00228
LINES APPROXIMATELY 1.2 AND 1.3 MILES IN	)	
LENGTH IN BOONE COUNTY, KENTUCKY	)	

ORDER

On September 16, 2025, Duke Energy Ohio, Inc. (Duke Energy Ohio) filed an application with the Kentucky State Board on Electric Generation and Transmission Siting (Siting Board) seeking a Construction Certificate to construct two new 138 kV nonregulated transmission lines approximately 1.24 and 1.34 miles in Boone County, Kentucky.<sup>1</sup>

On September 25, 2025, Applied Industrial Technologies, Inc. (Intervenor) filed a motion requesting intervention through counsel.<sup>2</sup> Applied Industrial Technologies were granted intervention by the Siting Board on October 14, 2025.<sup>3</sup> Pursuant to a procedural schedule established on October 1, 2025,<sup>4</sup> Duke Energy Ohio responded to two rounds

---

<sup>1</sup> Application (filed on Sept. 16, 2025) at 1.

<sup>2</sup> Motion to Intervene (filed Sept. 25, 2025).

<sup>3</sup> Order (Ky. Siting Board Oct. 14, 2025).

<sup>4</sup> Order (Ky. Siting Board Oct. 1, 2025).

of discovery.<sup>5</sup> Duke Energy Ohio also responded to one request for information from the Intervenor.<sup>6</sup> A site visit was held on November 3, 2025. Siting Board consultant, Elliot Engineering Inc. (Elliot), filed its report on December 1, 2025.<sup>7</sup> Duke Energy Ohio submitted its response to the Elliot Report on December 9, 2025. On December 15, 2025, Applied Industrial Technologies filed a notice that it would not be appearing at the hearing in this matter.<sup>8</sup> A formal hearing was held on December 16, 2025. Elliot filed a revised report on December 22, 2025.<sup>9</sup> Duke Energy Ohio filed a post-hearing brief.<sup>10</sup> Duke Energy Ohio filed its responses to post-hearing requests for information on December 30, 2025. The matter now stands submitted for a decision.

### LEGAL STANDARD

KRS 278.714(2) directs the applicant to file the following information in an application for the construction of the unregulated transmission line as proposed by Duke Energy Ohio:

- Location of proposed line and structures to support it;
- Proposed right-of-way limits;
- Existing property lines that will be crossed and names of owners;
- Distance from neighborhoods, schools, public and private parks;
- Voltage and capacities;
- Length of line;

---

<sup>5</sup>Duke Energy Ohio's Response to Siting Board Staff's First Request for Information (Staff's First Request) (filed Oct. 31, 2025); Duke Energy Ohio's Response to Applied Industry Technologies Inc.'s First Request for Information (filed on Oct. 31, 2025), Duke Energy Ohio's Response to Siting Board Staff's Second Request for Information (Staff's Second Request) (filed Nov. 18, 2025).

<sup>6</sup> Duke Energy Ohio's response to Applied Industrial Technologies' First Request for Information (filed Oct. 31, 2025).

<sup>7</sup> Elliot Engineering Inc. Report (Elliot Report) (filed Dec. 1, 2025).

<sup>8</sup> Applied Industrial Technologies Notice (filed Dec. 15, 2025).

<sup>9</sup> Elliot Engineering Inc. Report (Elliot Report) (filed Dec. 22, 2025).

<sup>10</sup> Duke Energy Ohio's Post-Hearing Brief (filed on Dec. 23, 2025).

- Terminal points;
- Substation connection; and
- Statement of compliance for construction and maintenance with engineering practices and the National Electrical Safety Code (NESC).

KRS 278.714(3) states:

Action to grant the certificate shall be based on the board's determination that the proposed route of the line will minimize significant adverse impact on the scenic assets of Kentucky and that the applicant will construct and maintain the line according to all applicable legal requirements. In addition, the board may consider the interstate benefits expected to be achieved by the proposed construction or modification of electric transmission facilities in the Commonwealth. If the board determines that locating the transmission line will result in significant degradation of scenic factors or if the board determines that the construction and maintenance of the line will be in violation of applicable legal requirements, the board may deny the application or condition the application's approval upon relocation of the route of the line, or changes in design or configuration of the line.

Per KRS 278.714(3), the Siting Board's action is based on two considerations: (1) scenic impact and (2) the applicant's compliance with all applicable legal requirements.

#### Full Description of the Proposed Route of Transmission Line

KRS 278.714(2)(b) requires a full description of the electric transmission line. Duke Energy Ohio proposed to construct two new 138 kV transmission lines to connect the future Turfway Substation on Turfway Road to Duke Energy Ohio's existing Circuit 23984 in Florence, Kentucky.<sup>11</sup> The two transmission lines will have independent route alignments that will connect the future Turfway Substation to the existing Circuit 23984.<sup>12</sup> The Western Route BG will be 1.24 miles long between the southern tap location along

---

<sup>11</sup> Application at 1.

<sup>12</sup> Application at 1.

the existing Circuit 23984 transmission line between Meijer Drive and Interstate 71/75 and the future Turfway Substation off Turfway Road in Florence, Kentucky.<sup>13</sup> From the southern tap location along the existing Circuit 23984 Transmission Line, Western Route BG then proceeds northwest crossing a parking lot and turns north to cross Meijer Drive.<sup>14</sup> The Western Route BG proceeds northeast following Meijer Drive then at the intersection of Meijer Drive and Houston Road, the route turns northeast and parallels the southern side of Houston Road.<sup>15</sup> The Western Route BG continues west of Thoroughbred Boulevard, turns northwest, crossing Houston Road, and parallels Thoroughbred Boulevard.<sup>16</sup> The Western Route BG crosses Spiral Drive, turns west, and then parallels the northern side of Spiral Drive.<sup>17</sup> The route continues to travel northeast paralleling parcel boundaries and crosses Turfway Road before reaching the future Turfway Substation.<sup>18</sup>

The Eastern Route EK is 1.34 miles long between the northern tap location along the existing Circuit 23984 Transmission Line south of Interstate 71/75 the future Turfway Substation off Turfway Road in Florence, Kentucky.<sup>19</sup> From the northern tap location at the existing Circuit 23984 Transmission Line, Eastern Route EK proceeds northwest

---

<sup>13</sup> Application at 2.

<sup>14</sup> Application at 2.

<sup>15</sup> Application at 2.

<sup>16</sup> Application at 2–3.

<sup>17</sup> Application at 3.

<sup>18</sup> Application at 3.

<sup>19</sup> Application at 3.

crossing the I-71/75 corridor, undeveloped and forested parcels, and Houston Road.<sup>20</sup> The Eastern Route EK then turns southwest, paralleling Houston Road, before turning northwest.<sup>21</sup> The route then turns southwest through forested land and continues through paved areas south of Turfway Park Racing & Gaming.<sup>22</sup> The Eastern Route EK turns northwest to enter the future Turfway Substation.<sup>23</sup>

Duke Energy Ohio did consider alternative transmission line routes.<sup>24</sup> A Route Selection study was conducted for this project by Jacobs Engineering Group.<sup>25</sup> A total of 60 alternative routes were developed for the Project.<sup>26</sup> After extensive analysis, the study recommended Route BG and Route EK as the preferred route for the Project.<sup>27</sup> Duke Energy Ohio stated that the preferred routes avoid the future I-75/275 Interchange Project, the Turfway Road central business corridor, planned developments along Houston Road, the Marydale Property and limits impacts to the CVG Airport airspace.<sup>28</sup> Duke Energy Ohio filed several maps for the proposed transmission line.<sup>29</sup>

The Intervenor argued that, rather than follow the existing property boundaries, the

---

<sup>20</sup> Application at 3.

<sup>21</sup> Application at 3.

<sup>22</sup> Application at 3.

<sup>23</sup> Application at 3.

<sup>24</sup> Application at 1.

<sup>25</sup> Application, Exhibit 2.

<sup>26</sup> Duke Energy Ohio's' Response to Staff's First Request, Item 4; Application, Exhibit 2, Section 3.5 and 3.6.

<sup>27</sup> Application at 2.

<sup>28</sup> Application at 2.

<sup>29</sup> Application, Exhibit 2.

western transmission line route directly intersects with the Intervenor's property.<sup>30</sup> The Intervenor argued that the western route will directly interfere with plans to expand its distribution warehouse into portions of its property where Duke Energy Ohio proposes to locate the Western Route.<sup>31</sup>

#### Detailed Description of the Proposed Transmission Line and Appurtenances

KRS 278.714(2)(c) states that a full description of the proposed electric transmission line and appurtenances is required, including the following: initial and design voltages and capacities; length of the line; terminal points; and substation connections.

The two new 138 kV transmission lines will connect the Turfway Substation on Turfway Road to Duke Energy Ohio's existing Circuit 23984 in Florence, Kentucky.<sup>32</sup> Duke Energy Ohio submitted a map showing the existing property lines that the proposed transmission line would cross.<sup>33</sup> Duke Energy Ohio has not executed any leases or easements for the transmission line route or for the right of way for the transmission line.<sup>34</sup> Duke Energy Ohio stated that upon approval from the Siting Board leases will be procured.<sup>35</sup> Duke Energy Ohio's transmission line right of way guidelines for a new 138 kV transmission line specify a 70-foot easement width parallel and adjacent to existing road right of way and a 100 foot easement width non-roadside.<sup>36</sup> Duke Energy Ohio

---

<sup>30</sup> AIT's Motion to Intervene (filed on Sept. 25, 2025) at 2.

<sup>31</sup> AIT's Motion to Intervene at 2.

<sup>32</sup> Application at 1.

<sup>33</sup> Application, Exhibit 4 and 5.

<sup>34</sup> Duke Energy Ohio's Response to Staff's First Request for Item 1.

<sup>35</sup> Duke Energy Ohio's Response to Staff's First Request for Item 1.

<sup>36</sup> Application at 3.

stated that the 100 feet right-of-way could be reduced to 70 feet when the proposed right of way is parallel and adjacent to an existing road right-of- way.<sup>37</sup> If the 70 feet wide right of way is used, it has 35 feet on each side of the centerline.<sup>38</sup>

Duke Energy Ohio is seeking approval to place the centerline and associated right-of-way in the 150-foot corridor as required based on the field conditions.<sup>39</sup> Duke Energy Ohio stated that this would allow the proposed centerline and associated right-of-way to move slightly on either side of the proposed centerline and right-of-way if adjustments are needed during final negotiations with landowners and access needs.<sup>40</sup>

Preliminary design plans anticipate Western Route BG will require 16 foundation-based galvanized steel poles, 7 direct embedded galvanized steel poles as well as 70 planned transmission line self-supporting monopoles.<sup>41</sup> The Eastern Route EK will require 12 foundation-based galvanized steel poles and 12 direct embedded galvanized steel poles.<sup>42</sup> The distances between poles range along the right of way (ROW) but ultimately average about 100-600 feet apart.<sup>43</sup> The heights of the poles will range from approximately 50 to 105 feet.<sup>44</sup>

Duke Energy Ohio has included sketches of the proposed typical transmission line

---

<sup>37</sup> Application at 3.

<sup>38</sup> Duke Energy Ohio's Response to Staff's First Request, Item 59.

<sup>39</sup> Application at 4.

<sup>40</sup> Application at 4.

<sup>41</sup> Application at 8.

<sup>42</sup> Application at 8.

<sup>43</sup> Duke Energy Ohio's Response to Staff's First Request, Item 59.

<sup>44</sup> Application at 8.

and support structure.<sup>45</sup>

The Siting Board finds that Duke Energy Ohio has provided sufficient information regarding the chosen route of the transmission line as well as the structure of the line. The Siting Board finds that Duke Energy Ohio should comply with all mitigation measures contained in its application and filings. The Siting Board finds additional requirements are necessary to ensure protections exist, in case the transmission line route is different than the route supported by the record of this matter. This will be set forth more fully in Appendix A to this Order.

#### Compliance with National Electrical Safety Code (NESC)

KRS 278.714(2)(d) requires that the applicant provide a statement that the proposed transmission line and appurtenances will be constructed and maintained in accordance with accepted engineering practices and the NESC. Duke Energy Ohio confirmed that the proposed electric transmission line would be built and maintained in accordance with accepted engineering practices and the NESC.<sup>46</sup>

#### Requirements under KRS 278.714(3)

The Siting Board is also tasked with examining additional criteria in rendering its decision regarding construction of the proposed transmission line as discussed below.

#### Scenic Impact

For the proposed nonregulated transmission line, the Project features under consideration for scenic compatibility include towers to support the transmission line; Western Route BG, that is approximately 1.24 miles long and Eastern Route EK that is

---

<sup>45</sup> Application, Exhibit 7.

<sup>46</sup> Application at 5.



approximately 1.34 miles long.

Duke Energy Ohio stated that the proposed routes of the electric transmission line will not have a significant adverse impact on the scenic assets of Boone County, Kentucky due to the location and proximity to the existing and future commercial development and proximity to other overhead and utility infrastructure.<sup>47</sup> Duke Energy Ohio stated that the area is compatible with surrounding areas because most of the city limits are developed or being developed.<sup>48</sup> Additionally, Duke Energy Ohio stated that there is already existing infrastructure, lighting, distribution poles, parking lots and very little residential areas.<sup>49</sup> No scenic areas have been identified in the right of way of the preferred route of the transmission lines.<sup>50</sup>

The Elliot Report recommended that Duke Energy Ohio create an overall plot plan indicating all water bodies, bridges, railroad crossings, culverts, access roads, power lines, and residential and public structures in order to minimize interference and adverse scenic impacts.<sup>51</sup> In addition, the Elliot Report recommended Duke Energy Ohio coordinate with surrounding nonparticipating landowners to limit the impact of oversized loads delivered to the Project; develop transmission line design systems that have a minimum impact on the environmental issues discussed in Elliot's Report; provide prior notices to neighbors regarding potential construction and operation noises, as well as

---

<sup>47</sup> Duke Energy Ohio's Response to Staff's First Request, Item 6.

<sup>48</sup> Duke Energy Ohio's Response to Staff's First Request, Item 61.

<sup>49</sup> Duke Energy Ohio's Response to Staff's First Request, Item 61.

<sup>50</sup> Duke Energy Ohio's Response to Staff's First Request, Item 57.

<sup>51</sup> Elliot Report at 21.

limits on working hours during the construction period.<sup>52</sup>

Duke Energy Ohio noted that all the mitigation measures proposed by the Elliot Report were reasonable.<sup>53</sup>

The Siting Board finds that, based on the application, the construction of the transmission line will have a minimal scenic impact on the area. The Siting Board finds that the mitigation measure proposed by Duke Energy Ohio and Elliot are reasonable and will minimize the impact to the area. However, the Siting Board finds additional requirements are necessary to ensure protections exist, in case the transmission line route is different than the route supported by the record of this matter. This will be set forth more fully in Appendix A to this Order.

#### Compliance with all Legal Requirements

KRS 278.714(3) frames the decision to be made by the Siting Board for proposed nonregulated transmission lines. As previously discussed, the Siting Board finds that overall, the proposed transmission lines would not have a significant adverse impact on the scenic assets of Boone County, Kentucky.

Duke Energy Ohio and Duke Energy Kentucky are members of the PJM Interconnection, a Regional Transmission Organization.<sup>54</sup> The project was presented as a system need at a PJM Sub-Regional Regional Transmission Expansion Plan (SRRTEP)-Western Region M-3 meeting on March 15, 2024.<sup>55</sup> The proposed solution

---

<sup>52</sup> Elliot Report at 21.

<sup>53</sup> Duke Energy Ohio' Response to Consultant's Report at 3.

<sup>54</sup> Duke Energy Ohio's Response to Staff's Post-Hearing Request for Information (Staff's Post Hearing Request), Item 6.

<sup>55</sup> Duke Energy Ohio's Response to Staff's Post-Hearing Request, Item 7.

was presented on February 14, 2025. PJM approved the proposed solution on July 15, 2025, and authorized inclusion in the local plan as a supplemental project.<sup>56</sup> The project was added to the Duke Energy Ohio local plan on September 9, 2025.<sup>57</sup>

The Siting Board finds that Duke Energy Ohio proposed transmission line meets the requirements of KRS 278.714(3), subject to the mitigation measures and conditions imposed in this Order and the attached Appendix A to this Order.

### CONCLUSION

After carefully considering the criteria outlined in KRS Chapter 278, the Siting Board finds that Duke Energy Ohio has presented sufficient evidence to support the issuance of a Construction Certificate to construct the proposed nonregulated transmission lines. The Siting Board conditions its approval upon the full implementation of all mitigation measures and other requirements described herein and listed in Appendix A to this Order. A map showing the location of the proposed transmission lines is attached hereto as Appendix B.

IT IS THEREFORE ORDERED that:

1. Duke Energy Ohio's application for a Construction Certificate to construct two new 138 kV nonregulated transmission lines approximately 1.24 and 1.34 miles in Boone County, Kentucky, is conditionally granted subject to full compliance with the mitigation measures and conditions prescribed in Appendix A.

2. Duke Energy Ohio is approved to place the centerline and associated right-

---

<sup>56</sup> Duke Energy Ohio's Response to Staff's Post-Hearing Request, Item 7.

<sup>57</sup> Duke Energy Ohio's Response to Staff's Post-Hearing Request, Item 7.

of-way in the 150-foot filing corridor as required based on the field conditions encountered.

3. Duke Energy Ohio may move the centerline as described in its application and response to requests for information to the extent that no additional property owners are impacted nor additional change in right of way or transmission line routes without Siting Board review and approval.

4. Duke Energy Ohio shall fully comply with the mitigation measures and conditions prescribed in Appendix A to this Order.

5. In the event mitigation measures within the body of this Order conflict with those prescribed in Appendix A to this Order, the measures in Appendix A shall control.

6. This case is closed and removed from the Siting Board's docket.

KENTUCKY STATE BOARD ON ELECTRIC  
GENERATION AND TRANSMISSION SITING



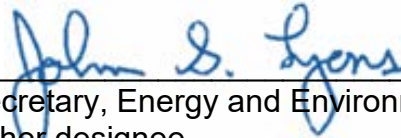
Chair, Public Service Commission



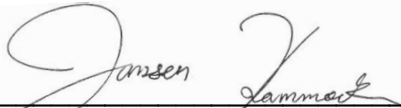
Commissioner, Public Service Commission



Commissioner, Public Service Commission



Secretary, Energy and Environment Cabinet,  
or her designee



Secretary, Cabinet for Economic Development,  
or his designee

ATTEST:



Executive Director  
Public Service Commission  
*on behalf of the Kentucky State  
Board on Electric Generation  
and Transmission Siting*



## APPENDIX A

### APPENDIX TO AN ORDER OF THE KENTUCKY STATE BOARD ON ELECTRIC GENERATION AND TRANSMISSION SITING IN CASE NO. 2025-00228 DATED JAN 14 2026

#### MITIGATION MEASURES AND CONDITIONS IMPOSED

The following mitigation measures and conditions are hereby imposed on Duke Energy Ohio, LLC (Duke Energy Ohio) to ensure that the facilities proposed in this proceeding are constructed as ordered.

1. A final site plan shall be submitted to the Siting Board upon completion of the final transmission line route. Deviations from the preliminary transmission line route should be clearly indicated on the revised graphic.

2. Any change in the transmission line route from the information that formed this evaluation shall be submitted to the Siting Board for review.

3. Duke Energy Ohio shall adhere to the proposed transmission routes presented in the application. Should Duke Energy Ohio find it necessary to include any parcel of land not included in this record as a notified landowner in order to finalize the route of the proposed transmission line(s), Duke Energy Ohio shall return to the Siting Board to request an amendment to the location of the transmission line or right-of-way.

4. The Siting Board will determine whether any deviation in the transmission line route is likely to create a materially different pattern or magnitude of impacts.

5. Existing vegetation between the transmission line and nearby roadways and homes shall be left in place to the extent feasible to help minimize visual impacts and screen the transmission line from nearby homeowners and travelers. Duke Energy Ohio will not remove any existing vegetation except to the extent it must remove such

vegetation for the construction of the transmission line and to maintain right of ways along the transmission line route.

6. Duke Energy Ohio is required to limit construction activity, process, and deliveries to the hours between 8 a.m. and 6 p.m. local time, Monday through Saturday. The Siting Board directs that construction activities that create a higher level of noise will be limited to 9 a.m. to 5 p.m. local time, Monday through Friday. Non-noise causing and non-construction activities can take place on the site between 7 a.m. and 10 p.m. local time, Monday through Sunday, including field visits, arrival, departure, planning, meetings, mowing, surveying, etc.

7. Duke Energy Ohio shall fix or pay for repairs for damage to roads and bridges resulting from any vehicle transport to the areas of construction for the transmission line. For damage resulting from vehicle transport in accordance with all permits, those permits will control.

8. Duke Energy Ohio shall comply with all laws and regulations regarding the use of roadways.

9. Duke Energy Ohio shall implement ridesharing between construction workers when feasible, use appropriate traffic controls, or allow flexible working hours outside of peak hours to minimize any potential traffic delays during AM and PM peak hours.

10. Duke Energy Ohio shall consult with the Kentucky Transportation Cabinet (KYTC) regarding truck and other construction traffic and obtain necessary permits from the KYTC.

11. Duke Energy Ohio shall consult with the Boone County Road Department regarding truck and other construction traffic and obtain any necessary permits from the County Road Departments.

12. Duke Energy Ohio shall develop special plans and obtain necessary permits before transporting heavy loads onto state or county roads.

13. Duke Energy Ohio shall comply with any road use agreement executed with the County Road Departments. Such an agreement might include special considerations for overweight loads, routes utilized by heavy trucks, road weight limits, and bridge weight limits.

14. Duke Energy Ohio shall develop and implement a traffic management plan to minimize the impact on traffic flow and keep traffic safe. Any such traffic management plan shall also identify any traffic-related noise concerns during the construction phase and develop measures that would address those noise concerns.

15. Duke Energy Ohio shall properly maintain construction equipment and follow best management practices related to fugitive dust throughout the construction process, including the use of water trucks. Dust impacts shall be kept at a minimal level. The Siting Board requires Duke Energy Ohio's compliance with 401 KAR 63:010.

16. If any person shall acquire or transfer ownership of, or control, or the right to control the Project, by sale of assets, transfer of stock, or otherwise, or abandon the same, Duke Energy Ohio or its successors or assigns shall request explicit approval from the Siting Board with notice of the request provided to the Boone County Fiscal Courts. In any application requesting such abandonment, sale, or change of control, Duke Energy Ohio shall certify its compliance with KRS 278.710(1)(i).



17. As applicable to individual lease agreements, Duke Energy Ohio, its successors, or assigns will abide by the specific land restoration commitments agreed to by individual property owners as described in each executed lease agreement.

18. Duke Energy Ohio will provide the Siting Board all interconnection reports when they are completed.

19. Duke Energy Ohio shall provide the Boone County Planning & Development Commission contact information for individuals within the company that can be contacted with concerns. This shall include contact information for the general public to reach individuals that can address their concerns. Duke Energy Ohio shall update this contact information yearly, or within 30 days of any change in contact information.

20. Create an overall plot plan indicating all water bodies, bridges, railroad crossings, culverts, access roads, power lines, residential and public structures, etc., to minimize interference or adverse impact.

21. The new transmission lines shall maintain sufficient clearance from any existing power lines.

22. Coordinate with surrounding nonparticipating landowners to limit the impact of oversized loads delivered to the Project (Ex, Power Poles).

23. As Duke Energy progresses in the interconnection process Duke Energy Ohio shall provide the Siting Board with all final reports.

24. At least 30 days prior to construction Duke Energy Ohio shall provide notice to residents and businesses within a 1-mile radius of the proposed transmission lines regarding construction and operation noises, as well as limits on working hours during

the construction period, any mitigation plans, and its Complaint Resolution Program referred to in Item 28 of this Appendix, at least one month prior to the start of construction.

25. The transmission line project shall comply with all applicable statutes and regulations, including but not limited to the NESC, U.S. Department of Agriculture Rural Utilities Service (RUS) Bulletin 1724E-200 Design Manual for High Voltage Transmission Lines, IEEE 516-2021, and IEEE Guide for Maintenance Methods on Energized Power.

26. In order to minimize the impacts provided for in KRS 278.714(3), Duke Energy Ohio shall submit a final layout of the transmission lines and make all reasonable efforts to minimize the new right of ways and instead try to co-locate with any current transmission facilities.

27. Prior to construction, Duke Energy Ohio shall initiate and maintain a Complaint Resolution Program to address any complaints from community members. Duke Energy Ohio shall also submit annually a status report associated with its Complaint Resolution Program, providing, among other things, the individual complaints, how Duke Energy Ohio addressed those complaints, and the ultimate resolution of those complaints, identifying whether the resolution was to the complainant's satisfaction.

28. The Complaint Resolution Program shall address any complaints from community members. The Complaint Resolution Program shall be published on the Project's website so that residents can be able to contact a representative of Duke Energy Ohio to address any complaints that may arise. Duke Energy Ohio shall also submit to the Siting Board, annually from the date the project construction begins, a status report associated with its Complaint Resolution Program, providing, among other things, the individual complaints, how Duke Energy Ohio has addressed those complaints, and the

ultimate resolution of those complaints, identifying whether the resolution was to the complainant's satisfaction. Once the project has commenced electric generation, within 30 days after that date, Duke Energy Ohio shall file a final report for any unreported period.

29. Duke Energy Ohio shall discuss potential screening plan agreements with the landowners leasing land to Duke Energy Ohio for the transmission line to determine if any screening strategies that might mitigate and reduce the visual impact to the affected residences and continue to address complaints through the construction phase of the transmission line.

30. Within 30 days of executing all the leases and easements for this project, Duke Energy Ohio shall submit all leases and easements to the Siting Board.

31. The Siting Board can reconvene to enforce any of the above mitigation measures until the generation of electricity commences.

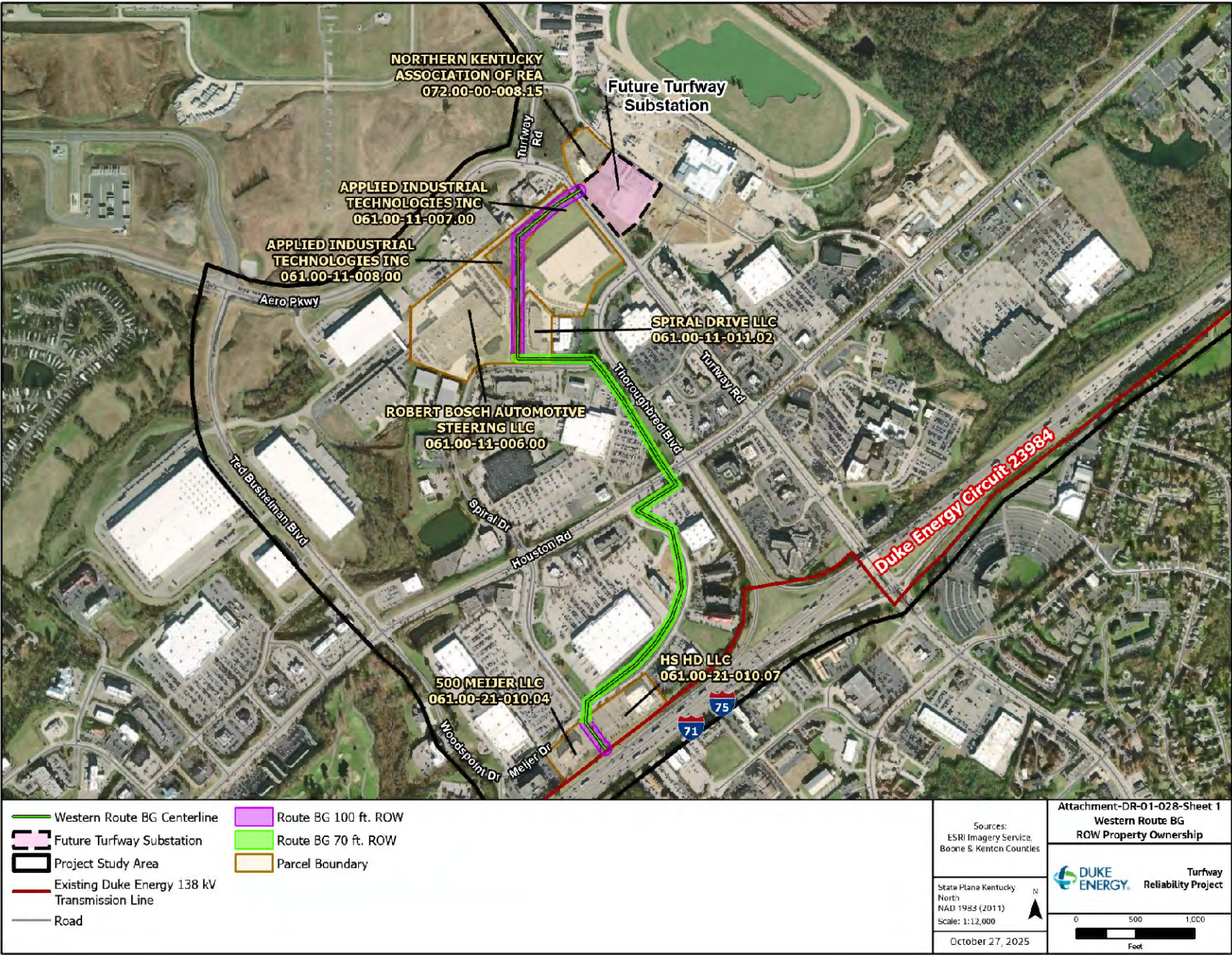
32. Within 30 days of service of this Order, Duke Energy Ohio shall send a copy of this Order to all the adjoining landowners who previously were required to receive notice of this Project.

APPENDIX B

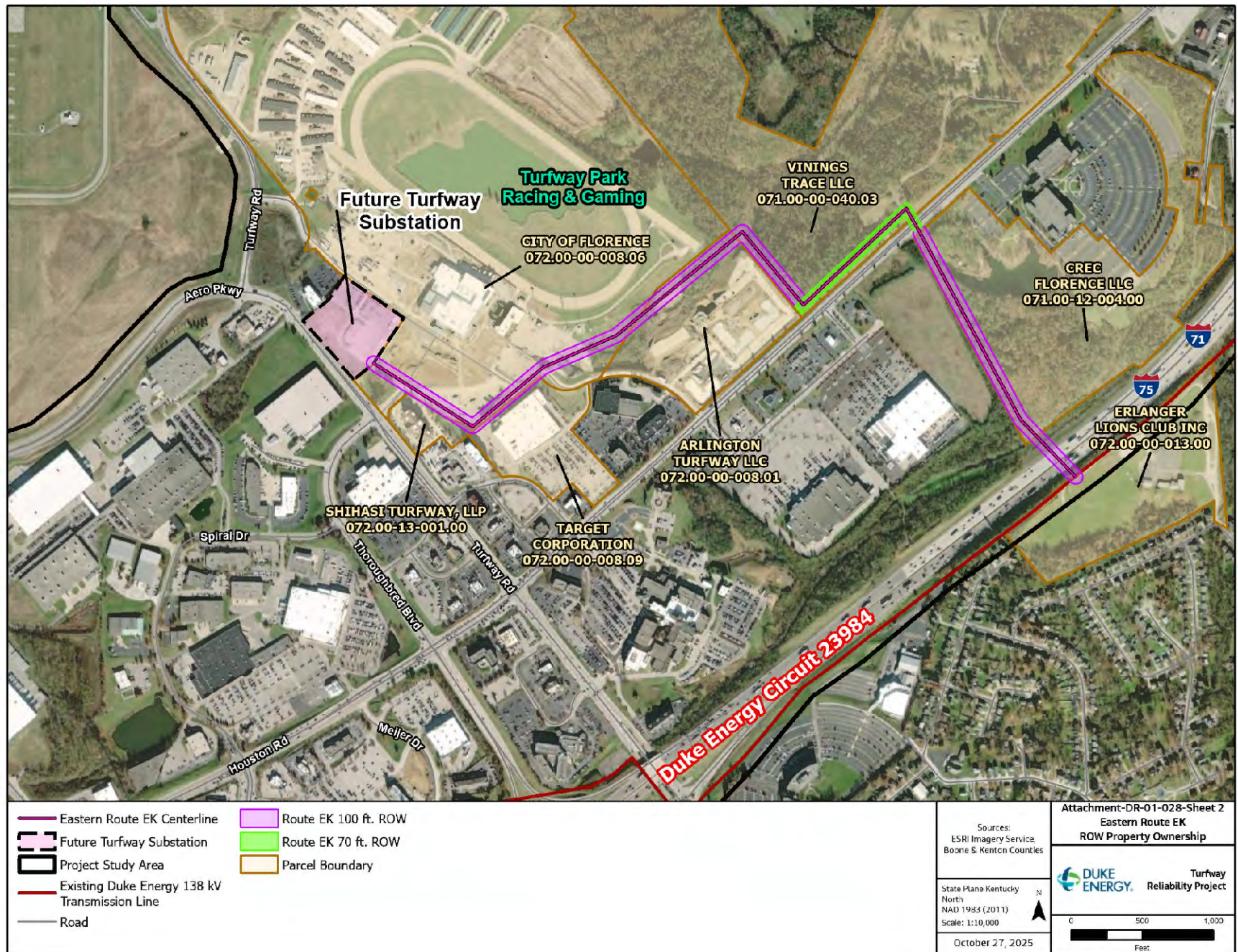
APPENDIX TO AN ORDER OF THE KENTUCKY STATE BOARD ON  
ELECTRIC GENERATION AND TRANSMISSION SITING IN  
CASE NO. 2025-00228 DATED JAN 14 2026

TWO PAGES TO FOLLOW









\*Brigette R. Koreny  
Applied Industrial Technologies, Inc.  
One Applied Plaza  
Cleveland, OH 44115

\*Hannah Thompson  
Dinsmore & Shohl, LLP  
101 South Fifth Street  
Suite 2500  
Louisville, KY 40202

\*Larisa M. Vaysman  
Duke Energy Kentucky, Inc.  
139 East Fourth Street  
Cincinnati, OH 45201

\*Minna Sunderman  
Duke Energy Kentucky, Inc.  
139 East Fourth Street  
Cincinnati, OH 45201

\*Duke Energy Ohio, Inc.  
139 East Fourth Street  
Cincinnati, OH 45202

\*Rocco O D'Ascenzo  
Duke Energy Kentucky, Inc.  
139 East Fourth Street  
Cincinnati, OH 45201

\*Edward T Depp  
Dinsmore & Shohl, LLP  
101 South Fifth Street  
Suite 2500  
Louisville, KY 40202