

COMMONWEALTH OF KENTUCKY  
BEFORE THE PUBLIC SERVICE COMMISSION

In the Matter of:

ELECTRONIC APPLICATION OF BLUEGRASS )  
WATER UTILITY OPERATING COMPANY, LLC )  
FOR A CERTIFICATE OF PUBLIC )  
CONVENIENCE AND NECESSITY FOR THE )  
INSTALLATION OF A DRAIN FIELD AT THE )  
MARSHALL RIDGE SYSTEM OR AN ORDER )  
DECLARING THE INSTALLATION IS AN )  
EXTENSION IN THE ORDINARY COURSE OF )  
BUSINESS )

CASE NO.  
2024-00170

ORDER

On October 3, 2024, the Executive Director, on behalf of the Commission, issued a request for information as set forth in the procedural schedule set by the Commission on September 19, 2024, in this matter for Bluegrass Water Utility Operating Company to respond to data requests. The request for information omitted the two appendices referenced in the request.


Finding that the October 3, 2024 request for information should be amended, the Commission, HEREBY ORDERS, *nunc pro tunc*, that:

1. The appendices attached hereto are hereby incorporated into the October 3, 2024 requests for information.
2. All provisions of the October 3, 2024 request for information that are not in conflict with the terms of this Order shall remain in effect.

PUBLIC SERVICE COMMISSION

  
\_\_\_\_\_  
Chairman

  
\_\_\_\_\_  
Commissioner

  
\_\_\_\_\_  
Commissioner

ENTERED  
OCT 16 2024 AH  
KENTUCKY PUBLIC  
SERVICE COMMISSION

ATTEST:

  
\_\_\_\_\_  
Executive Director

Case No. 2024-00170

APPENDIX A

APPENDIX TO AN ORDER OF THE KENTUCKY PUBLIC SERVICE  
COMMISSION IN CASE NO. 2024-00170 DATED OCT 16 2024

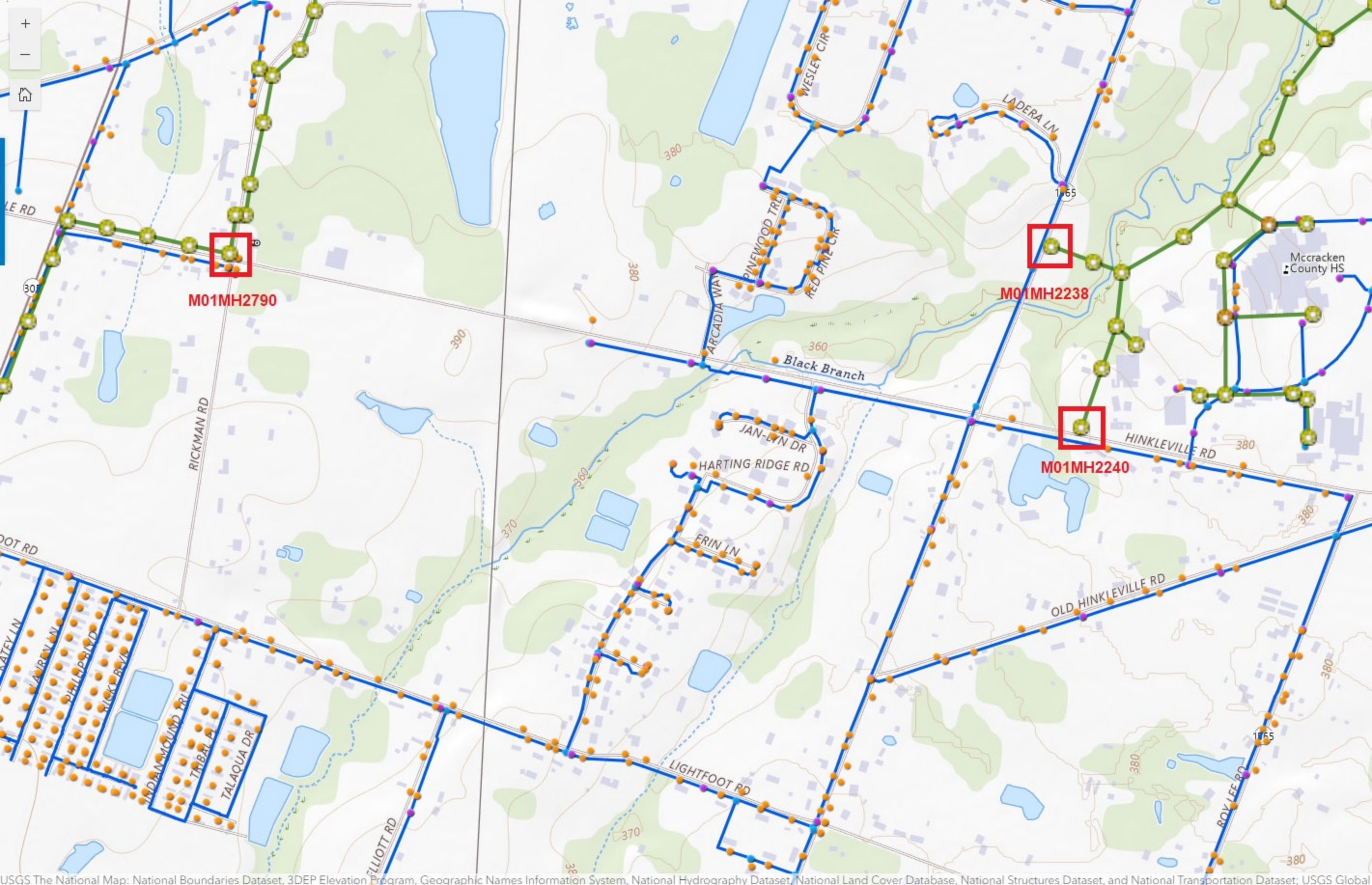
THREE PAGES TO FOLLOW



M01MH2790

M01MH2238

M01MH2240



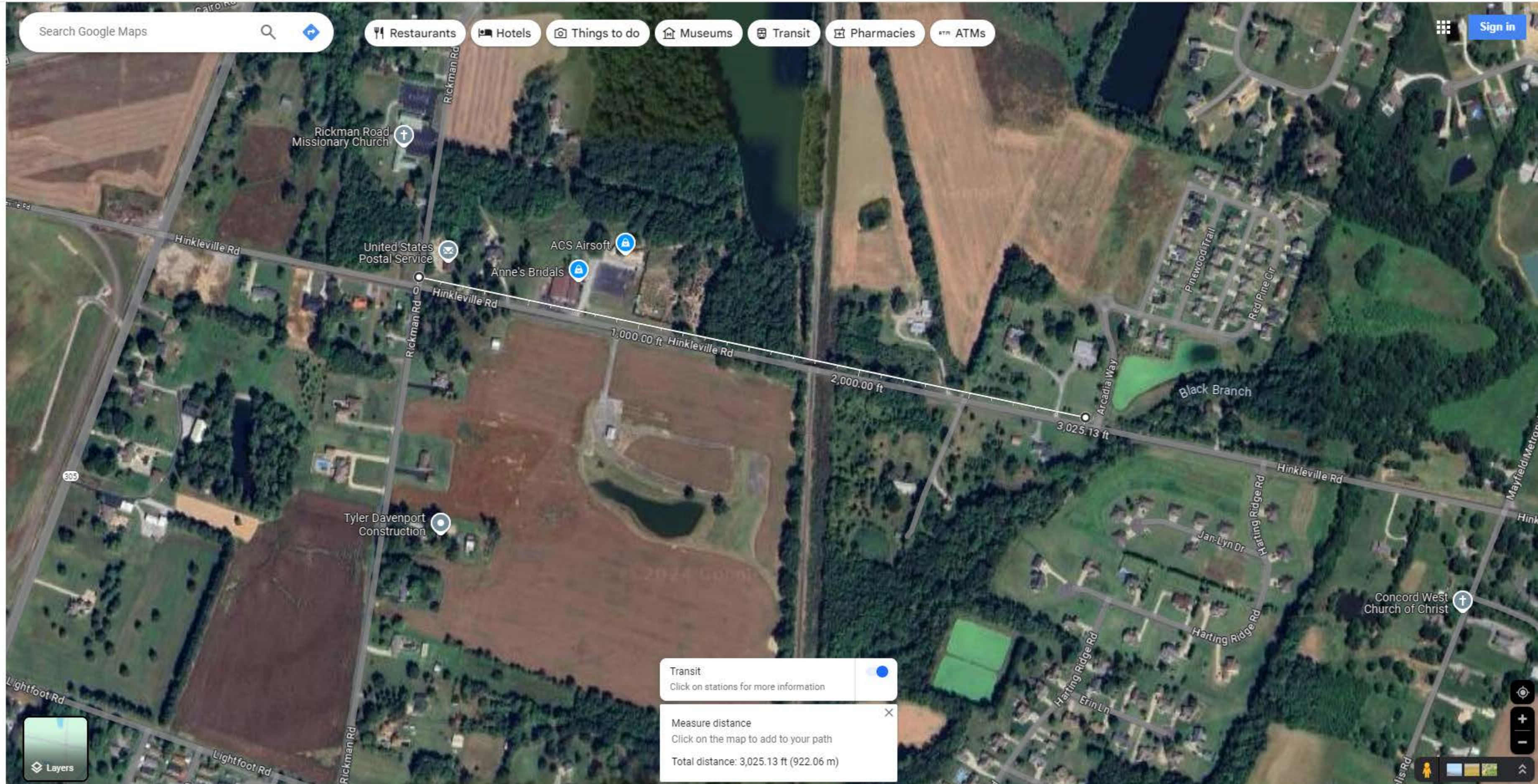
M01MH2790

M01MH2238

M01MH2240

Search Google Maps

- Restaurants
- Hotels
- Things to do
- Museums
- Transit
- Pharmacies
- ATMs



Transit

Click on stations for more information

---

Measure distance

Click on the map to add to your path

Total distance: 3,025.13 ft (922.06 m)

Layers

## APPENDIX B

### APPENDIX TO AN ORDER OF THE KENTUCKY PUBLIC SERVICE COMMISSION IN CASE NO. 2024-00170 DATED OCT 16 2024

#### § 34.22 USE OF PUBLIC SEWERS.

⋮

##### (A) *Mandatory sewer connection.*

(1) The owner(s) of all houses, buildings or properties used for human occupancy, employment, recreation or other purposes, situated within the boundaries of the JSA and abutting on any street, alley or right-of-way in which there is located a public sewer of the JSA, is hereby required, at the owner's expense, to install suitable sanitary facilities therein, and to connect such facilities directly with the proper sewer in accordance with the provisions of this subchapter.

(2) It shall be unlawful to construct or maintain any privy, privy vault, septic tank, cesspool or other facility intended or used for the disposal of wastewater where public sewer service is available, as defined in division (A)(1) above, except as provided for in "private wastewater disposal" (§ [34.23](#)).

(3) At such time as a public sewer becomes available to a property served by a private wastewater disposal system, a direct connection shall be made to the public system within 12 months in compliance with this subchapter. JSA shall provide notice of the availability of public sewers by advertisement in the Paducah Sun. Said notice shall be published one time only and within 30 days after completion of the sewer project making public sewers available. The city and county building offices shall not issue a permit for new construction unless the landowner has complied with this provision.

\*Aaron Silas  
Central States Water Resources  
1650 Des Peres Road  
Suite 303  
St. Louis, MISSOURI 63131

\*Eric Rocchio  
Central States Water Resources  
1650 Des Peres Road  
Suite 303  
St. Louis, MISSOURI 63131

\*Honorable Holly C Wallace  
Attorney at Law  
Dinsmore & Shohl, LLP  
101 South Fifth Street  
Suite 2500  
Louisville, KENTUCKY 40202

\*Jill Wall  
Dinsmore & Shohl, LLP  
101 South Fifth Street  
Suite 2500  
Louisville, KENTUCKY 40202

\*John Lavanga  
Dinsmore & Shohl, LLP  
City Center, 100 W. Main Street  
Suite 900  
Lexington, KENTUCKY 40507

\*Bluegrass Water Utility Operating Company, LLC  
1630 Des Peres Road, Suite 140  
St. Louis, MO 63131

\*Edward T Depp  
Dinsmore & Shohl, LLP  
101 South Fifth Street  
Suite 2500  
Louisville, KENTUCKY 40202