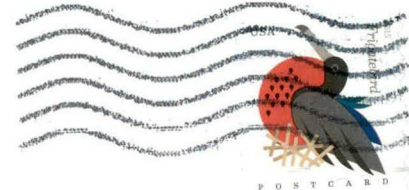


I am a residential KU customer, and I strongly oppose the proposed KU rate increase. The 8.1% average increase for residential customers is far too large and out of proportion with cost of living and wage increases.

With thanks  
*Leila Salisbury*

LEXINGTON KY 403  
22 OCT 2018 PM 1 T



Public Service Commission  
211 Sower Blvd  
PO Box 615  
Frankfort KY 40602

RECEIVED

OCT 23 2018



Ms. Leila W. Salisbury  
3348 Bellefonte Dr  
Lexington KY 40502-3209