

10-31-18

①

Ky Public Service Commission RECEIVED

NOV 02 2018

Case # 2017-00328

PUBLIC SERVICE  
COMMISSION

I am writing concerning the hearing schedule for Nov. 27, 2018 at 9 AM. Concerning the Hazard - Jackson 69 KV transmission line, 9 supplemental projects, and the Hazard - Lothain substation, and wooten substation.

I have read Exhibit 17: Projected news release from (AEP) Ky power case # 2017-00328 main application date 11-17-2017 which states: Ashland, Ky. Aug. 14, 2017 - Ky. power co. on Monday announced the East Ky. Transmission program to strengthen and upgrade the regional grid over 5 to 7 years. Is a plan like this really needed over such a large area, really needed at this time when Ky power customers are already facing a huge debt burden. would the all the transmission system be bad at same time or is it a move by (AEP) Ky power TO make more profits.

as far as I know the hazard - wooten

②

transmission line and both Hazard and Wooten substations are working fine. We have not had any power outages because of this transmission line or substations in our area. Kypco, AEP and affiliates are out to make as much profit as possible. AEP doesn't really care about how much financial burden it put on its Kypco customers which are poor and working people. All the extra add-ons, tariffs makes it very hard for people to pay their electric bills.

On 2/2/2018 the attorney sent Kypco a supplemental Request for Information. On 2-9-2018 Kypco responds to the attorney general's second set of data request (ag 2-002). (AEP) Kypco objects to 6 different information request items. I cannot find where AEP (Kypco) gave this information to the attorney general's office. How can Kypco get away with refusing information to the attorney general's office, when the attorney general's office is trying to help the KPSC make sure that

③

Kentucky citizens are being treated fair, honest, and are not being robbed by AEP (Kypco). The Kpsc has responsibility of governing over 1500 business. As I see it the Kypsc is really overworked plus overloaded with responsibilities. The Kpsc should not give its OK for any project when any business refuses to give any information to the Kpsc or the attorney general's office. Kypco cannot be given a blank check to do what they want,

(AEP) Kypco are use to business as usual "that is getting what they want". I have read a lot of (AEP) Kypco cases that have come before the Commission over the years. AEP (Kypco) uses PJM and Ferc to get their projects approved. PJM & Ferc will OK any project or anything that (AEP) Kypco submits to them. Ferc & PJM will also give (AEP) Kypco higher rate of return on investment. The Kpsc has control over Ky. business matters. The Kpsc must look out for the best interest of Ky. Citizens and what is best for them.

I agree with the attorney-general's

④

who says AEP Kypco is asking for a rehearing using the 69KV Hazard-Jackson transmission line as an excuse for a rehearing to get the Kpsc to approve it Wooten and hazard substation projects. The Hazard-Jackson portion of the 161KV Hazard-Wooten transmission line was approved in final order issued 3-16-18.

any way AEP (Kypco) fail to prove the Necessity for the <sup>69KV</sup> Hazard-Jackson transmission line and its 9 supplemental projects nor did it show where the 69KV Hazard-Jackson had been inspected and found rotting power poles.

I am sending 4 pictures to the Kpsc: "Exhibit 10" shows the Hazard-Lothain substation. "Exhibit 7" shows the Hazard-Jackson 69KV transmission line and the Hazard-Wooten 161KV transmission line first set of power poles after leaving the Hazard-Lothain substation. I also sent two pictures showing where the Hazard-Jackson 69KV transmission line leave the Hazard-Wooten 161KV transmission line by the Hazard High School ball fields.

⑤

I think that the appraisals for the projects are excessive. 9.84 million dollars for outside services is excessive for the Hazard - Wooten 161 KV transmission line part of the project. Most of the land has been stripped mined that the Hazard - Wooten 161 KV transmission line goes over and is accessible. The material for the project is between 2 and 3 million dollars.

Estimate for the Hazard - Lothain Sub: of 12.7 million dollars for outside services is excessive. 1 million dollars for engineering is excessive. The Hazard - Lothain substation has been operating for a long time. I can not recall a power outage from this substation. The Hazard substation is established, every thing is there that is needed. There is no need to increase it capacity since most of the coal mine are shut down and the demand will never be as great as it was when all the coal mines were operating. Also the voltages are staying the same - coming into the substation and going out of the substation. If any thing should happen

(6)

to a component at this substation Kypco can change it out at a lot less expense. Rebuilding the complete substation will not make it any better since new parts are bad sometimes.

Circuit breaks are designed to trip when a fault occurs.

The transmission system that is in place have worked well for Kypco customers as well as the substation. There use to be coal mines & coal tipples everywhere in East Ky. I know there is capacity already here to meet future needs for electricity. since Kypco and PJM will in the future will want to change out the entire transmission system to meet PJM standards. By the way PJM only benefits Kypco, people in New York City, not rural areas like East Ky. I think Kypsc should adopt a pay as you go system for (AEP) Kypco and not let AEP(Kypco) put so much debt on Ky power co. Customers that they can't pay their electric bills, just because it don't meet PJM standards. Projects should only be approved when another

⑦

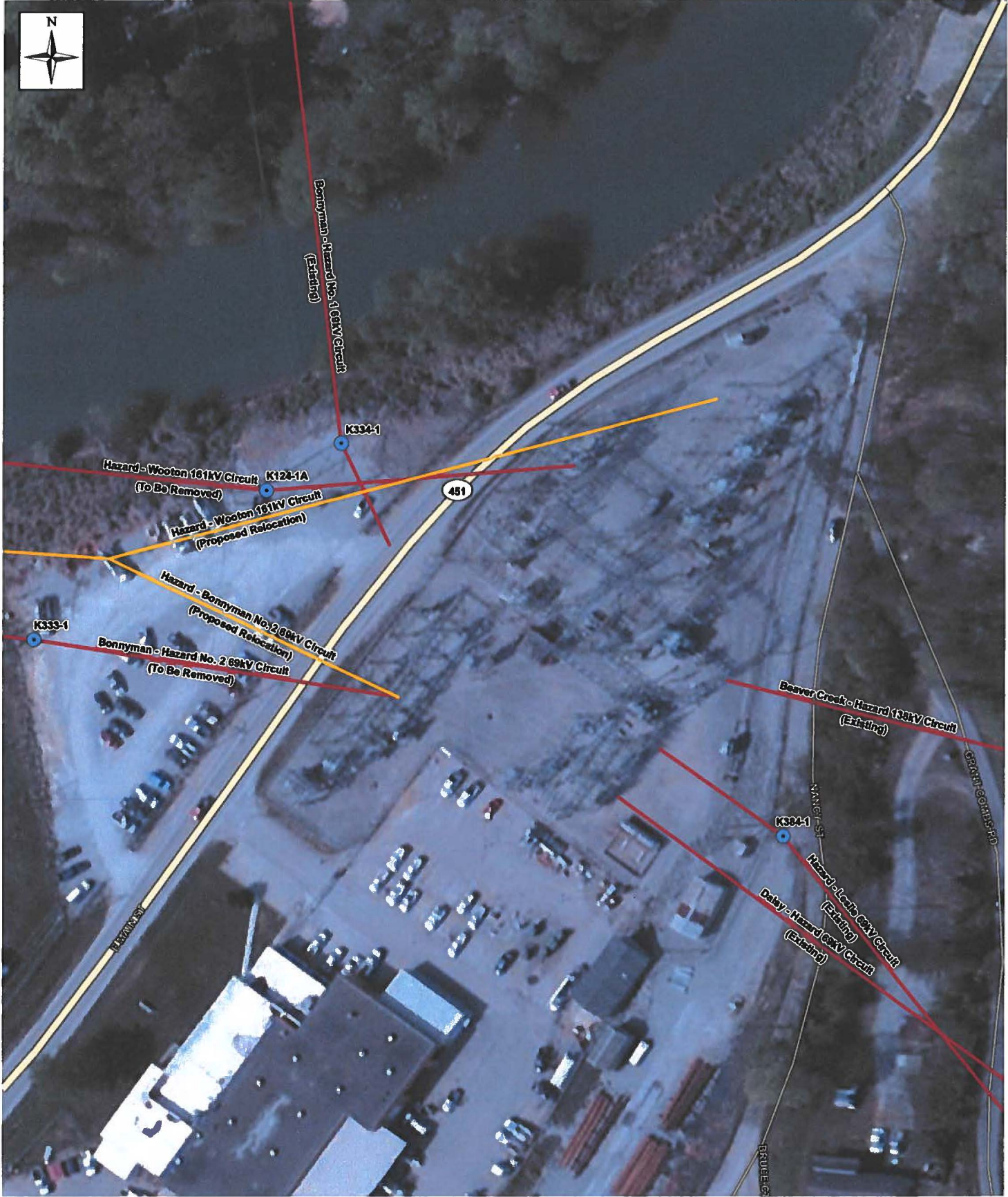
project is paid off. Projects should only be approved when absolutely necessary, not to make PJM happy and AEP, KyPCO, and affiliates huge profits.

I think the KPSC should keep a close eye on (AEP) KyPCO, because they will want to do a lot of projects. (AEP) KyPCO will do anything to get its project approved.

Final order on March 16, 2018 for case # 2017-00328 the KPSC denied KyPCO request for CPCN for improvements to Wooten-Hazard substation is denied. I agree with this decision that the KPSC made denying the Hazard & Wooten substation projects.

Rotted power poles was the main problem on the 161 KV Hazard-Wooten transmission line. Rebuilding this Hazard-Wooten transmission line will fix this problem and this is all that is needed done.

Respectfully  
Jeddis J. Colman 10-31-18  
Jeddis J. Colman  
795 Kingdom Come CNKc  
1. white br. marker 41858



SUBSTATION LOCATION MAP



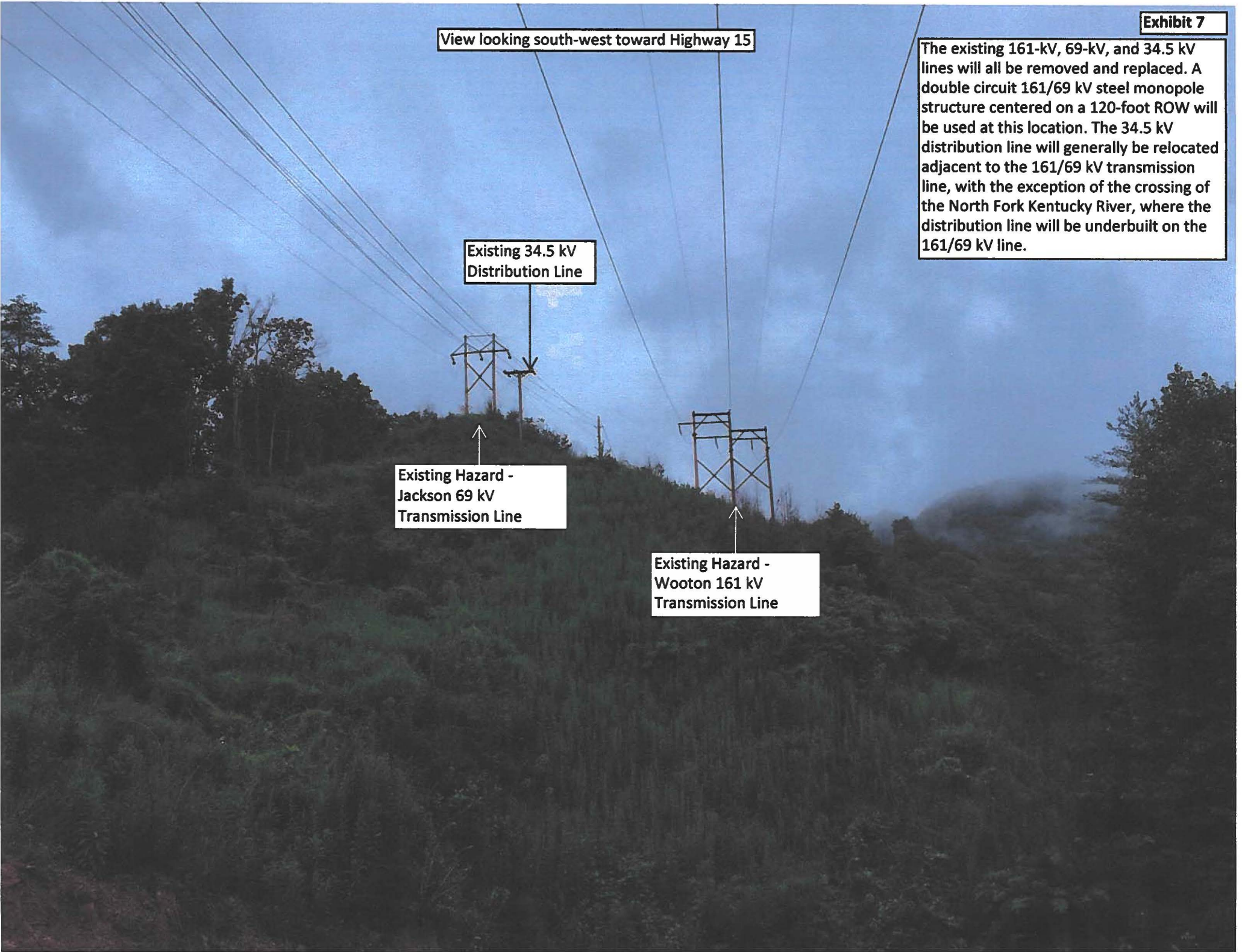
View looking south-west toward Highway 15

The existing 161-kV, 69-kV, and 34.5 kV lines will all be removed and replaced. A double circuit 161/69 kV steel monopole structure centered on a 120-foot ROW will be used at this location. The 34.5 kV distribution line will generally be relocated adjacent to the 161/69 kV transmission line, with the exception of the crossing of the North Fork Kentucky River, where the distribution line will be underbuilt on the 161/69 kV line.

Existing 34.5 kV  
Distribution Line

Existing Hazard -  
Jackson 69 kV  
Transmission Line

Existing Hazard -  
Wooton 161 kV  
Transmission Line





Hazard - Jackson 69 kV Reconfiguration  
(in 100-foot ROW)

Hazard High School

Hazard High School Ball Fields

	School		120' ROW
	Proposed Rebuild Route		100' ROW
	Proposed 69 kV Reconfiguration		Filing Corridor (shown in white)
	Existing AEP Transmission Line To Be Removed		Parcel Boundary
	Existing Transmission Line		Lake/Pond (NHD)
	Road		City of Hazard

Aerial imagery composite of LIDAR (4/2/2017) and ESRI basemap imagery

1" = 250'

0 125 250  
Feet

**Map 2: Proposed Rebuild Route - GIS Constraints**  
Page 3 of 12

Leslie and Perry Counties  
Kentucky

NAD 1983 2011 Basemap: Kentucky State Plane 1400 FTL2  
Foot US  
Lambert Conformal Conic  
NAD 1983 2011

Date: 11/8/2017  
Author: JN  
Project: 10000

**Hazard - Wooton 161kV Line Rebuild**

© 2017 Kentucky Power  
SOUND THE ENERGY

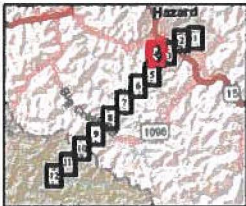



Aerial imagery composite of LIDAR (4/2/2017) and ESRI basemap imagery

1" = 250'

0 125 250

Foot



**Map 2: Proposed Rebuild Route - GIS Constraints**  
Page 4 of 12

Leslie and Perry Counties  
Kentucky

HAD 183 281 - OnePlan Community South FIPS 1600 P112  
Plot URL  
Lambert Conformal Conic  
HAD 183 281

Date: 11/8/2017  
Author: JN  
POWERX 10000

**Hazard - Wooton 161kV Line Rebuild**

© 2017 Kentucky Power  
SUNBELT ENERGY