



a PPL company

Gwen R. Pinson  
Executive Director  
Kentucky Public Service Commission  
211 Sower Boulevard  
Frankfort, Kentucky 40601

RECEIVED  
APR 13 2018  
PUBLIC SERVICE  
COMMISSION

**Louisville Gas and Electric  
Company**  
State Regulation and Rates  
220 West Main Street  
PO Box 32010  
Louisville, Kentucky 40232  
www.lge-ku.com

April 13, 2018

Rick E. Lovekamp  
Manager Regulatory  
Affairs/Tariffs  
T 502-627-3780  
rick.lovekamp@lge-ku.com

**RE: *Louisville Gas and Electric Company Alleged Failure to Comply with  
KRS 278.495, 807 KAR 5:022, and 49 C.F.R. Part 192  
Case No. 2017-00119***

Dear Ms. Pinson:

Enclosed please find the gas organization chart for the period prior to September 17, 2014 as well as the current gas organizational chart which reflects the organizational changes made by the Louisville Gas and Electric Company's ("LG&E") gas business since September 17, 2014. LG&E is filing these charts to comply with Ordering Paragraph No. 5 of the March 16, 2018 Order in the above-referenced matter.

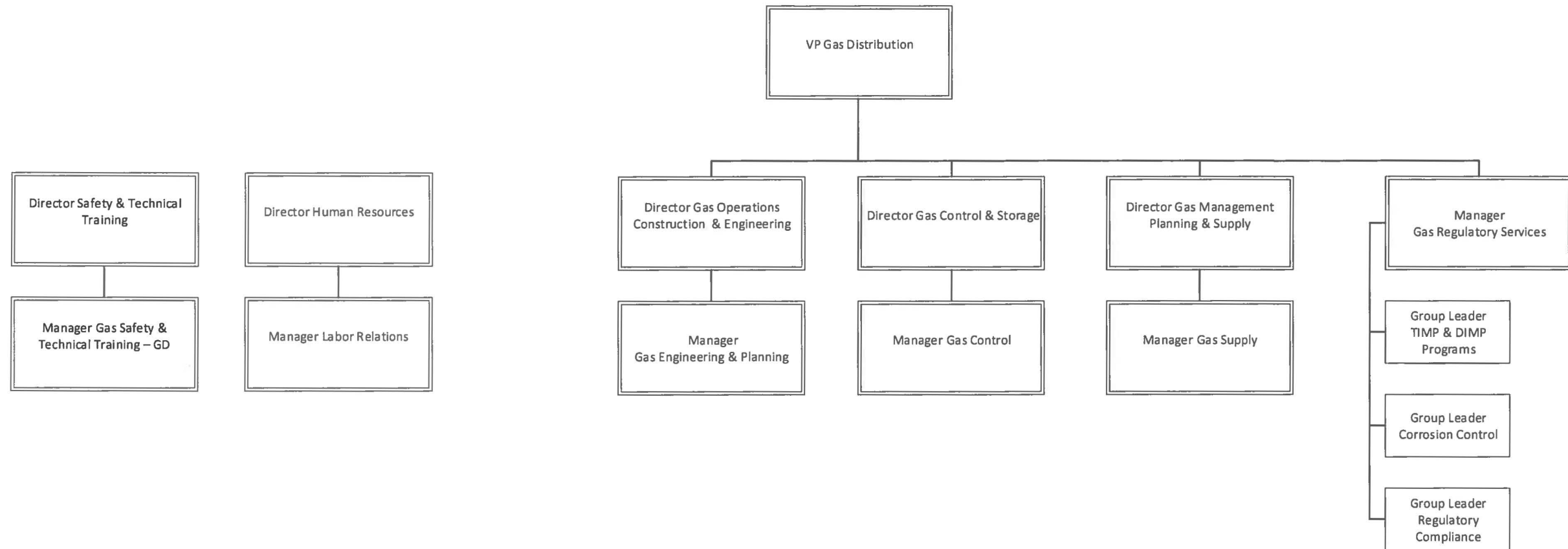
Should you require anything further, please contact me at your convenience.

Sincerely,

Rick E. Lovekamp

Enclosure

## Gas Distribution Operations - 2014



## Gas Distribution Operations - 2018

