



BRIAN CUMBO

ATTORNEY AT LAW

86 W. Main St., Suite 100
P.O. Box 1844
Inez, KY 41224
(606) 298-0428
FAX: (606) 298-0316
cumbolaw@cumbolaw.com

ADMITTED IN KY AND WV

RECEIVED

AUG - 8 2016

Public Service
Commission

August 5, 2016

Aaron Greenwell, Acting Executive Director
Public Service Commission
P.O. Box 615
Frankfort, KY 40602

RE: Martin County Water District
PSC Case No. 2016-00142

Dear Mr. Greenwell:

Enclosed please find an unbound original and seven (7) additional copies of Martin County Water District's Response to Commission Staff's Second Request for Information regarding the above captioned matter.

Thank you for your attention to this matter.

Very truly yours,

BRIAN CUMBO

BC/ld

Enclosure

cc: Martin County Water District

COMMONWEALTH OF KENTUCKY
BEFORE THE PUBLIC SERVICE COMMISSION

RECEIVED

AUG - 8 2016

Public Service
Commission

In the Matter of:

INVESTIGATION OF THE OPERATING)
CAPACITY OF MARTIN COUNTY WATER) CASE NO. 2016-00142
DISTRICT PURSUANT TO KRS 278.280)

MARTIN COUNTY WATER DISTRICT'S RESPONSE TO
COMMISSION STAFF'S SECOND REQUEST FOR INFORMATION

Comes now the Martin County Water District, by counsel, and for their Response to Commission Staff's Second Request for Information, states as follows:

1. Refer to Martin District's response to Commission Staff's Initial Request for Information to Martin County Water District ("Staff's Initial Request"), Item 1. Provide a description of the category "MISC" and state the reasons for and the process associated with assigning work orders into this category.

RESPONSE: "MISC" Category: The bill software has been set up to track work orders by categories, and the categories are pre-set. If a customer or person calls the office for assistance concerning a problem with their water, the office personnel will ascertain what the problem is and prepare a work order. If the problem described fits into a specific category, they will choose that category. If not, they will place it into the "MISC" category and describe the problem on the work order. We have reached out to Kevin Minix, who developed the software to possibly expand the categories of work orders. See Exhibit #1 "MISC" Category.

2. Refer to Martin District's response to Staff's Initial Request, Item 1. Describe the process through which the general manager prioritizes work orders.

RESPONSE: For obvious reasons, leaks are a priority and moved to the top in order of severity. The list then descends in order of perceived urgency. The following priority list is listed in order: 1. Repair leaks on Main Lines, 2. Repair leaks on service

lines, 3. Complaints, 4. Taps, 5. Meter Pulls, 6. Meter Change outs, 7. Meter Sets, 8. "MISC", 9. Read In and Read Outs, 10. Verify Meter Numbers and Re-reads.

3. Refer to Martin District's "Project Rejuvenate," which was discussed at the May 18, 2016 Informal Conference with Commission Staff ("May 18, 2016 IC").

a. Summarize each individual project that is an element of Project Rejuvenate. For each project, include an explanation of why the project is necessary and explain when and how Martin District plans to implement the project.

RESPONSE: Disinfection Byproducts Reduction Project/Water Quality Project (Require by DOW).

Clearwell Aeration: This Project will reduce TTHMs in the system as required by DOW. The District will contract the installation of the system with a reliable contractor. When funding becomes available. (FALL 2016?)

Repair Clearwell Diffusion Pipe: This will enhance the movement of the filtered water from the clarifier. This will assist in reducing TTHMs which is required by DOW. When funding becomes available. (FALL 2016?)

Clarifier Cover: By covering the Clarifiers, it will reduce algae growth in the Clarifiers. In turn, fewer chemicals will be necessary, resulting in cost savings. When funding becomes available.

Rebuild #1 Clarifier: To reduce vulnerability at the Water Plant. This Project will require bidding, engineering, and contractors. When funding becomes available. (1 year from receiving funding?).

RESPONSE: System improvement/maintenance reduction. (Required by DOW).

Raw water Intake Upgrade: Rehab the Raw Water Intake located in the Tug River. The Raw Water Intake feeds into Crum Reservoir, which is the District raw water supply. The present system functions poorly, and requires constant, costly maintenance and pump rebuilds and replacement. When funding becomes available. (6 to 12 months after funding becomes available). This will require bidding the project and engineering.

RESPONSE: Water Loss Reduction (Required by PSC)

Radio Read Meters: To seek grant money to provide fast and accurate readings of customers' meters, resulting in cost savings of labor and accuracy, and tampering. When funding becomes available. This will require bidding the project.

Replace Old Water Lines: Old water lines (age forty years) in certain areas of the District have required numerous repairs, and require constant maintenance, and resultant water loss, and temporary loss of customer service. When funding becomes available.

RESPONSE: Water treatment plant improvements (Desired)

Structural Renovations (Operations Building)

Mechanical Renovations (Operations Building)

Electrical systems upgrades

Architectural Renovations (Operations Building)

Process Improvements and Expansion

Engineering, Contractors, Bonds, Inspection, ETC

See Exhibit #2 – Project Rejuvenate.

b. State how Martin District has determined the prioritization of the Project Rejuvenate projects.

RESPONSE: The above Projects have been prioritized with four (4) categories considered. The first 3 categories are (required) to comply with DOW requirements, and the last one is a goal.

c. State whether any construction projects related to water-loss reduction are planned but not included as part of Project Rejuvenate. If so, provide a summary of each project and explain why the project is necessary, and state when and how Martin District plans to implement the project.

RESPONSE: No other plans at present other than what is mentioned in Project Rejuvenate. The District will continue to repair leaks on main lines and service lines when they occur.

4. Refer to Martin District's response to Staff's Initial Request, Item 4. Explain whether and how, if applicable, off-peak metering has been effective.

RESPONSE: Off peak metering has resulted in customer savings as shown. Daytime cost p/kwh=Daytime \$.13 cents; and off-peak \$.05 cents. See Exhibit #3 – Power bill for Raw Water.

5. Refer to Martin District's response to Staff's Initial Request, Item 5. Provide a summary of Martin District's in-house training.

RESPONSE: The General Manager has reassigned one of our employees' to the Treatment Plant for training. Others will be rotated in whenever possible. This individual will shadow the Plant Operator and perform those duties, under the operator's direct supervision, until the Plant Operator is satisfied that this individual can satisfactorily perform the duties, and they are provided study materials. This employee has taken his Class IA certification and will take his Class IIA certification test in August 2016.

6. Refer to Martin District's response to Staff's Initial Request, Item 5. State whether the one employee identified in training will constitute an additional operator upon certification.

RESPONSE: When he passes his Class IIA certification, he will be assigned permanently to the Treatment Plant as an operator.

7. Refer to Martin District's response Staff's Initial Request, Item 6. Provide a detailed description of Martin District's water system, including the identification of any zones used by Martin District in system operation. Include a map that, at minimum, includes the location of water mains used for transmission, storage facilities, and master meters.

RESPONSE: See Exhibit #4 – System Map.

8. Refer to Martin District's response to Staff's Initial Request, Item 7.

a. Discuss how Martin District uses master meters in leak detection, and indicate whether Martin District believes that additional meters would be helpful in leak detection.

RESPONSE: The master meters readings are compared to the total of the meter readings in the designated area to correlate water usage. If they do not correlate, leak investigation is begun. The DISTRICT and KRWA are in the process of constructing ZONES within the DISTRICT using our master meters as our starting point. Tim Blanton of KRWA advises additional, smaller meters in the zone areas will assist to isolate leaks. This is due to many sub sections within the zone areas.

b. Provide a narrative that describes the Kentucky Rural Water Association's ("KRWA") assistance to Martin District in detecting leaks. Provide a copy of any water-loss spreadsheet and other guidance or assistance material provided to Martin District by the KRWA.

RESPONSE: The KRWA has assisted district personnel in assigning areas to master meters to correlate usage. The goal is to begin with the clearwell storage tanks, and zone outward. See Exhibit #5 – KRWA forms.

c. Indicate whether the assistance provided by KRWA has changed the way that Martin District prioritizes repair and replacement of facilities. If assistance has changed, describe how.

RESPONSE: Training on leak detection using our up to date leak detection equipment has shown to be very helpful in locating hard to find leaks. This will enable our employees to quickly make repairs to our system and reduce water loss. Reducing water loss to PSC's standards will take time and results of water loss will take time. Also, KRWA, has been very helpful in making suggestions to reduce our DBPs in the system. For example, aeration of the clearwell, moving the point of chlorine injection and ways to reduce organics coming into the plant.

d. Explain how Martin District utilizes flushing as part of its response to issues associated with disinfection byproducts.

RESPONSE: Flushing for DBPs has been happening, however, no records have been kept. Beginning in the month of August 2016, records will be maintained for DBP flushing, and water usage accounted for.

e. Explain how Martin District utilized flushing as part of its response to issues associated with disinfection by-products.

RESPONSE: Flushing has been implemented as necessary for DBPs. However, no records have been maintained. Beginning in the month of August 2016, records will be maintained for DBP flushing, and a program of regular flushing is being utilized, on a weekly basis.

f. Explain how Martin District accounts for flushing when determining water loss for its system.

RESPONSE: Flushing lines has been happening, however no records have been maintained. Beginning in the month of August 2016, records will be completed and maintained when flushing. Flushing will be accounted for by using a meter to track hydrant flushing and when flushing lines, the size of line and timing will be used to calculate the water loss for the system.

9. Refer to Martin District's response to Staff's Initial Request, Item 8. Explain fully how Martin District is addressing Recommendation II-2, Step 4, from the Management Audit Action Plan other than prosecuting individuals for the use of cheater bars. Provide with the response a current disconnect report.

RESPONSE: Normally when a cheater bar is found in the meter box is because the meter was pulled for non-payment. Their service will not be restored until the bill is paid or a payment plan is in place. Periodic inspections of meter boxes where meters are pulled for non-payment are conducted. See Exhibit #6 – Current Disconnect Report 07/29/2016.

10. Refer to Martin District's response to Staff's Initial Request, Item 9.

a. Discuss Martin District's progress toward replacing leaking mains and services.

RESPONSE: A plan is in place as previously discussed. Awaiting funding.

b. Discuss Martin District's recent leak-detection efforts, including any mapping of its system to identify parts of its system with repeated breaks.

RESPONSE: With the assistance of KRWA, mapping is taking shape and we are talking to GEO Sync Mapping concerning software to enhance our system mapping. For instance, when the District repairs a leak, the employee can GPS the location and this will be placed onto the System Map.

c. If Martin District is in a position to quantify or approximate the decrease in water loss due to its recent leak-detection efforts, provide that information. If not, state when Martin District will be able to provide such quantification.

RESPONSE: See Exhibit #7 – Water Loss Report. Recent reports are attached documenting reduced unaccounted for loss.

11. Refer to Martin District's response to Staff's Initial Request, Item 10. Discuss the actions necessary for Martin District's preparation of a preventive maintenance plan for all the assets of Martin District. Include with the response a timeline containing the steps in the preparation of the plan.

RESPONSE: Time is the issue to permit this plan to be developed and implemented. Due to the busy work load and shortage of qualified personnel, I have not had the time to begin preparing a Preventive Maintenance Plan for the DISTRICT. My goal is to complete a draft of the plan by end of September 2016.

12. Refer to Martin District's response to Staff's Initial Request, Item 12.

a. Identify the actions that Martin District can take, in view of current funding, to reduce its vulnerability to service interruptions.

RESPONSE: 1. Monitoring all system pressure regulator pits on a weekly basis and record the readings. 2. Inspect all pump stations on a weekly basis and record results. 3. Check all master meters on a daily or weekly basis and record readings.

b. Provide an update on the condition of the Crum Reservoir.

RESPONSE: Due to all the rain and pumping from the river, the Crum Reservoir is supplying the water plant with sufficient amount of water to furnish water to our customers. However, there are ongoing issues with the pump station and intake structure which are being addressed, and will continue to be addressed, as time and money permits.

c. State whether Martin District believes that it should pursue a project to relocate a raw water intake. If so, explain why and fully describe the work that is necessary. If not, explain why not.

RESPONSE: An extension of the 16-inch raw water main from the reservoir to the water plant has been designed. This line extension would make it possible to bring raw water to the plant from the reservoir and/or the river. The extension consists of 2500' of 16-inch and 1800' of 12-inch pipe plus an intake structure at the lake. The existing 8 and 10-inch raw water lines will not convey the required raw water when the reservoir level is low and the water quality diminishes when these lines are used at lower water levels. Therefore, the raw water line extension is recommended. When funding becomes available. The intake itself has never performed reliably or economically. A relocated intake would be ideal.

d. Without regard to funding, identify and discuss any additional projects that Martin District believes is necessary or advisable to reduce its vulnerability to service interruptions.

RESPONSE: 1. New treatment plant located at the river; 2. The "DISTRICT" would like to purchase two (2) 100 KW, three (3) phase mobile generators to place at our key pump stations. (40 East and 40 West Pump Stations); 3. New vehicles; 4. An office complex; and 5. New distribution mains.

13. Refer to Martin District's response to Staff's Initial Request, Item 13. Provide a summary of Martin District's March 8, 2016 update to its Capital Improvement Plan of 2003 and provide a copy of the updated plan.

RESPONSE: The Capital Improvement Plan items are in this report, however, the DISTRICT has not formally completed this Plan. This should be completed sometime in October, 2016.

14. Refer to Martin District's response to Staff's Initial Request, Item 13. Provide a description of Martin District's in-house capital budget and construction planning.

RESPONSE: The DISTRICT is trying to seek funding for the Project Rejuvenate. If and when the DISTRICT receives funding, construction planning will take place. As the Commission is aware, the DISTRICT is struggling to fund the necessary expenses to keep the system operating due to rising fuel cost, electricity cost, insurance cost, bond payments, etc.

15. Refer to Martin District's Response to Staff's Initial Request, Item 16. Provide the information when it becomes available.

16. Refer to Martin District's Response to Staff's Initial Request, Item 18.

a. For Work Order 140200006 (Excel Mining), explain why the meter was changed.

RESPONSE: No water going thru the meter. Employee changed out the meter.

b. For Work Order 150300065 (Hackney), identify the problem and explain fully how the problem was resolved.

RESPONSE: The District employee took the customer water until they could find the problem. There was a leak on the main line causing low pressure to the customer. Leak repaired and problem solved.

c. For Work Order 150600218 (Crum), identify the problem and explain fully how the problem was resolved.

RESPONSE: Low pressure at customer's residence. Discovered a leak in the system and repaired. Customer's pressure is okay.

d. For Work Order 160100171 (Davis), identify the problem and explain fully how the problem was resolved.

RESPONSE: No water at customer's residence. Inspected and found that service line to his residence was frozen off. Customer's responsibility.

e. For Work Order 160200190 (Slone), identify the problem and explain fully how the problem was resolved.

RESPONSE: Customer has air in line. Inspection at the meter box revealed no air at the meter box. Notified customer.

17. Refer to Martin District's response to Staff's Initial Request, Item 19. Provide a detailed identification and explanation of pressure issues through Martin District's system, including any issues associated with filling tanks. For each pressure issue, discuss the steps Martin District is taking to address it.

RESPONSE: The DISTRICT supplies sufficient amounts of water to our tanks which supplies required amounts of pressure to our customers. Occasionally a main line break cause pressure problems to our customers. This is only for a short period of time until the break is repaired. A Boil Water advisory is issued when this happens. The line breaks are in large part due to old lines (40 years Old). The DISTRICT is repairing and replacing parts of of old lines with 200 and 250 psi lines. This is also part of Project Rejuvenate.

18. Refer to Martin District's response to Staff's Initial Request, Item 20. Provide copies of each boil water advisory that Martin District has provided its customers during the period January 1, 2013, to present.

RESPONSE: See Exhibit #8.

19. Refer to Martin District's response to Staff's Initial Request, Item 21. Provide a copy of all communications, for the period January 1, 2013, to present, between Martin District and the Kentucky Division of Water, including its regional offices, not previously provided.

RESPONSE: In order to fully and accurate comply with this item 21, I must request an open records request from the Division of Water and the Regional Office of DOW, which has gone out on August 4, 2016, a copy of that request is attached as Exhibit #9. Those in possession of the Water District are attached.

20. Refer to Martin District's response to Staff's Initial Request, Item 22. Provide the following:

a. A description of Martin District's policies for compliance with 807 KAR 5:066, Section 5(2) regarding the recording of pressure readings.

RESPONSE: Beginning April 2016, Pressure Charts have been placed in different parts of the system for a continuous one week period per month, and the Charts are maintained at the office. See Exhibit #10.

b. A sample copy of each type of report form that Martin District has provided to each fire department.

RESPONSE: See Exhibit #11.


21. Refer to Martin District's response to Staff's Initial Request, Item 24.

a. Describe in detail the ownership, management, metering, and monitoring of the Honey Branch Tank and pump station, and explain its use in providing service to the United States Penitentiary at Big Sandy, Kentucky.

RESPONSE: Exhibit #12 is the joint operation agreement between this District and Prestonsburg Utilities which provides the answer to this request.

b. Martin District indicated at the May 18, 2016 I.C. its intention to amend the contract with Prestonsburg concerning the Honey Branch Tank. Provide a status update of the efforts to amend the contract.

RESPONSE: We have met once with Prestonsburg, in February of 2016. Due to scheduling problems (and, it is suspected, little interest on the part of Prestonsburg), the DISTRICT and Prestonsburg have not been able to meet and discuss the Contract. Hopefully, we can schedule a meeting in September, 2016.


BRIAN CUMBO
COUNSEL FOR MARTIN COUNTY
WATER DISTRICT
P.O. BOX 1844
INEZ, KY 41224
TELEPHONE: (606) 298-0428
TELECOPIER: (606) 298-0316
EMAIL: cumbolaw@cumbolaw.com

CERTIFICATE OF SERVICE

This will certify that a true and correct copy of the foregoing was mailed, overnight delivery, on this the 5 day of August, 2016, to the following:

Aaron Greenwell, Acting Executive Director
Public Service Commission
P.O. Box 615
Frankfort, KY 40602



BRIAN CUMBO

VERIFICATION

I, Joe Hammond, of the Martin County Water District, hereby verify that the responses and exhibits attached hereto are true and correct to the best of my knowledge.



JOE HAMMOND

STATE OF KENTUCKY)

COUNTY OF MARTIN)

SUBSCRIBED, SWORN and ACKNOWLEDGED before me by Joe Hammond
this 5th day of August, 2016.

My Commission Expires: 9-18-18.





NOTARY PUBLIC, STATE AT LARGE

Exhibit #1
List of Categories

Martin County Water District

387 East Main St., Suite 140
Inez, KY 41224
(606) 298-3885

Service Orders Dated Between 6/1/2018 And 6/6/2018

Type of Work	Service Order Count	Closed Order Count	Open Order Count
Change Out	3	3	0
Complaints	1	1	0
Leak	2	2	0
Meter Set	12	12	0
MISC.	4	1	3
Pull - Customer Request	6	6	0
Read IN	5	5	0
Read Out	4	4	0
Tap	1	1	0
Verify Meter Number And Re	2	2	0
Totals:	40	37	3

Exhibit #2
Project Rejuvenate

Project Rejuvenate
MCWD

Disinfection Byproducts Reduction/water quality Projects (required)

◦ Clearwell aeration -----	\$10,000
◦ Clearwell diffusion pipe repair-----	\$5,000
◦ Clarifier cover -----	\$200,000
◦ Filter at reservoir intake -----	\$20,000
◦ Rebuild #1 clarifier -----	\$1,000,000
Subtotal -----	\$1,235,000

System Improvement/maintenance reduction (required)

◦ Raw Water Intake Upgrades -----	\$2,223,000
-----------------------------------	-------------

Water loss reduction (required)

◦ Radio read meter -----	\$800,000
◦ Water Line Replacement (Ky. 2032, Little Rockcastle Wolf Creek, Meathouse, Pigeon Roost, Lovely, And Warfield) -----	\$3,600,000
Subtotal -----	\$4,400,000

Total for Required projects ----- \$7,858,000

Water treatment plant improvements (desired)

◦ Structural Renovations (Operations Building)-----	\$216,000
◦ Mechanical Renovations (Operations Building)-----	\$196,000
◦ Electrical systems upgrades -----	\$280,000
◦ Architectural Renovations (Operations Building)-----	\$425,000
◦ Process Improvements and Expansion -----	\$3,430,000
◦ Engineering, contractors, Bonds, Inspection, ETC-----	\$1,047,807
Subtotal -----	\$5,594,000

Total Estimated Project Cost ----- \$13,452,000

Exhibit #3
Off - Peak Metering



A unit of American Electric Power

Send Inquiries To:
PO BOX 24401
CANTON, OH 44701-4401
R-03-435942030

B094-1
030006084 01 SF 0.465

MARTIN COUNTY WATER DISTRICT
C/O LINDA SUMPTER CPA
910 BLACKBERRY RD
INEZ, KY 41224-8974

Account Number
036-203-311-2-8
CY 08
468342

\$43,237.77	\$	Amount Enclosed
Total Amount Due		
Current Charges Due: Jun 27		

Make Check Payable and Send To:
KENTUCKY POWER COMPANY
PO BOX 24410
CANTON OH 44701-4410



0043237770043237770100000000000362033112809062706008900003

Please tear on dotted line

Return top portion with your payment 55

Service Address:
MARTIN COUNTY WATER DISTRICT
TURKEY CRK
NEW RIVER STATION
INEZ, KY 41224

Rate Tariff: Large General Service-251

Page 1 of 2

Account Number	Total Amount Due	Due Date
036-203-311-2-8	\$43,237.77	Jun 27, 2016
Meter Number	Cycle/Route	Bill Date
435942030	08-23	Jun 9, 2016

Previous Charges:

Total Amount Due At Last Billing \$ 22,903.61
Remaining Payment Agreement Amount 15,640.74
Previous Balance Due \$ 38,544.35

Current KPCO Charges:

Tariff 251 -Large General Service 06/08/16
Rate Billing \$ 2,455.79
Off-Pk Charges (20160 KWH Used) 1,073.52
Fuel Adj @ 0.0002858- Per KWH -10.92
DSM Adj @ 0.0018350 Per KWH 70.11
Kentucky Economic Development Surcharge .15
Capacity Charge @ 0.0011850 Per KWH 45.28
Big Sandy 1 Operation Rider @ 0.0027600 Per KWH 105.45
Purchased Power Adj 0.0153000% .57
Big Sandy Retirement Rider 4.9918000% 138.62
Environmental Adj 24.4210000% 678.15
School Tax 136.70
Current Electric Charges Due \$ 4,693.42

Total Amount Due \$43,237.77
Current Charges Due: Jun 27

Meter Number	Service Period		Meter Reading Detail			
	From	To	Previous	Code	Current	Code
435942030	05/09	06/08	3172	Actual	3265	Actual
Multiplier 192.0000			Metered Usage		18,048 KWH On-Pk	
435942030	05/09	06/08	7679	Actual	7878	Actual
Multiplier 192.0000			Metered Usage 39,208 KWH Total			

Next scheduled read date should be between Jul 8 and Jul 13

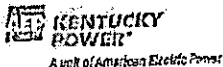
Questions About Bill or Service, Call
1-888-710-4237
Pay By Phone: 1-800-611-0964

KPCO Messages
On Peak limits are 7 AM to 9 PM daily, except Saturday and Sunday.
Make this the last bill sent in the mail. Gain more, go online and mail and go paperless to get an email notification when your bill is ready. Today is the Day! AEP Paperless.com.

Visit us at: www.KentuckyPower.com. For Rates Available on request. See schedule for important information.



A unit of American Electric Power



Send Inquiries To:
PO BOX 24401
CANTON, OH 44701-4401
R-03-435942723

6033-1
030006033 01 SP 0.485



MARTIN COUNTY WATER DISTRICT
C/O LINDA SUMPTER CPA
910 BLACKBERRY RD
INEZ, KY 41224-8974

Account Number
037-671-254-0-B
CY 04
248012

\$7,510.23
Total Amount Due
Amount Enclosed
Current Charges Due Jun 21

Make Check Payable and Send To:
KENTUCKY POWER COMPANY
PO BOX 24410
CANTON OH 44701-4410



0007510230007510230100000000000376712540603062306004900001

Service Address:
MARTIN COUNTY WATER DISTRICT
MIDDLEFORK RD
RT 3 S AIRPORT PUMP
DEBORD, KY 41212

Questions About Bill or Service Call
1-800-419-7237
Pay By Phone: 1-800-617-0966
KPCO Messages
If this is the last bill sent to the meter, gain
more energy and control by upgrading to
get an email notification when your bill is
ready. To get the details, call 1-800-419-7237.

Rate Tariff: Medium General Service-215 Page 1 of 2

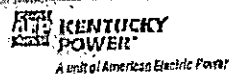
Account Number	Total Amount Due	Due Date
037-671-254-0-B	\$7,510.23	Jun 21, 2016
Meter Number	Cycle/Route	Bill Date
435942723	04-22	Jun 3, 2016

Previous Charges:
Total Amount Due At Last Billing \$ 5,012.11
Previous Balance Due \$ 5,012.11
Current KPCO Charges:
Tariff 215 - Medium General Service 06/02/16 \$ 1,677.88
Rate Billing -4.99
Fuel Adj @ 0.0032858 Per KWH 32.06
DSM Adj @ 0.0018350 Per KWH .15
Kentucky Economic Development Surcharge 20.70
Capacity Charge @ 0.0011050 Per KWH 24.84
Big Sandy 1 Operation Rider @ 0.0014100 Per KWH 23.49
Big Sandy 1 Operation Rider @ \$0.3400000 Per KW .30
Purchased Power Adj 0.0153000% 76.56
Big Sandy Retirement Rider 4.9918000% 374.57
Environmental Adj 24.4210000% 72.76
School Tax \$ 2,496.12
Current Electric Charges Due \$ 2,496.12

Total Amount Due \$7,510.23
Current Charges Due Jun 21

Meter Number	Service Period	Meter Reading	Code	Current	Actual
435942723	05/04 - 06/02	1877	Actual	1868	Actual
Multiplier 192.0000		Metered Usage 17,472 KWH			
435942723	05/04 - 06/02	0.000	Actual	0.360	Actual
Multiplier 192.0000		Metered Usage 69.120 KW			

Next scheduled read date should be between Jul 1 and Jul 7





Send Inquiries To:
PO BOX 24410
CANTON, OH 44701-4410
R-03-455078329

4902-1
03C004902 01 SP 0.465

MARTIN COUNTY WATER DISTRICT
387 E MAIN ST STE 140
INEZ, KY 41224-8023

Account Number
039-091-944-0-3
CY 06
365569

\$10,036.26	Amount Enclosed
Total Amount Due	
Current Charges Due Jun 23	

Make Check Payable and Send To:
KENTUCKY POWER COMPANY
PO BOX 24410
CANTON OH 44701-4410

0010036260010036260100000000000390919440307062306006900008

Please tear on dotted line

Return to provider with your payment 35

Service Address:
MARTIN COUNTY WATER DISTRICT
BLACKLOG RD
INEZ, KY 41224

Rate Tariff: Medium General Service-215

Page 1 of 2

Account Number	Total Amount Due	Due Date
039-091-944-0-3	\$10,036.26	Jun 23, 2016
Meter Number	Cycle/Routes	Bill Date
455078329	06-23	Jun 7, 2016

Previous Charges:

Total Amount Due At Last Billing \$ 6,370.57
Previous Balance Due \$ 6,370.57

Current KPCD Charges:

Tariff 215 -Medium General Service 06/06/16 \$ 2,780.67

Rate Billing

Fuel Adj @ 0.0002858 Per KWH -8.34
DSM Adj @ 0.0018350 Per KWH 53.55
Kentucky Economic Development Surcharge .15
Capacity Charge @ 0.0011850 Per KWH 34.58
Big Sandy 1 Operation Rider @ 0.0014100 Per KWH 41.15
Big Sandy 1 Operation Rider @ \$0.3400000 Per KW 15.03
Purchased Power Adj 0.0153000% .45
Big Sandy Retirement Rider 4.9918000% 108.90
Environmental Adj 24.4210000% 532.78
School Tax 106.77

Current Electric Charges Due \$ 3,865.69

Total Amount Due \$10,036.26
Current Charges Due Jun 23

Meter Number	Service Period	Previous Reading	Current Reading	Code
455078329	05/05 - 06/06	10666	10970	Actual
Multiplier 98.0000		Metered Usage 29.184 KWH		
455078329	05/05 - 06/06	0.000	0.460	Actual
Multiplier 98.0000		Metered Usage 44.160 KW		

Next scheduled read date should be between Jul 6 and Jul 11

Questions About Bill or Service, Call
888.710.4237
Pay By Phone 1.800.611.0364
KPCD Messages
Make sure the last bill sent in the mail is
more recent and just a few weeks before
you are billed. If you have any questions
about the bill, please call 1.800.611.0364
or visit our website at www.kpcd.com



Exhibit #4
System Map

Martin County Water District Monitor Meter Location Map

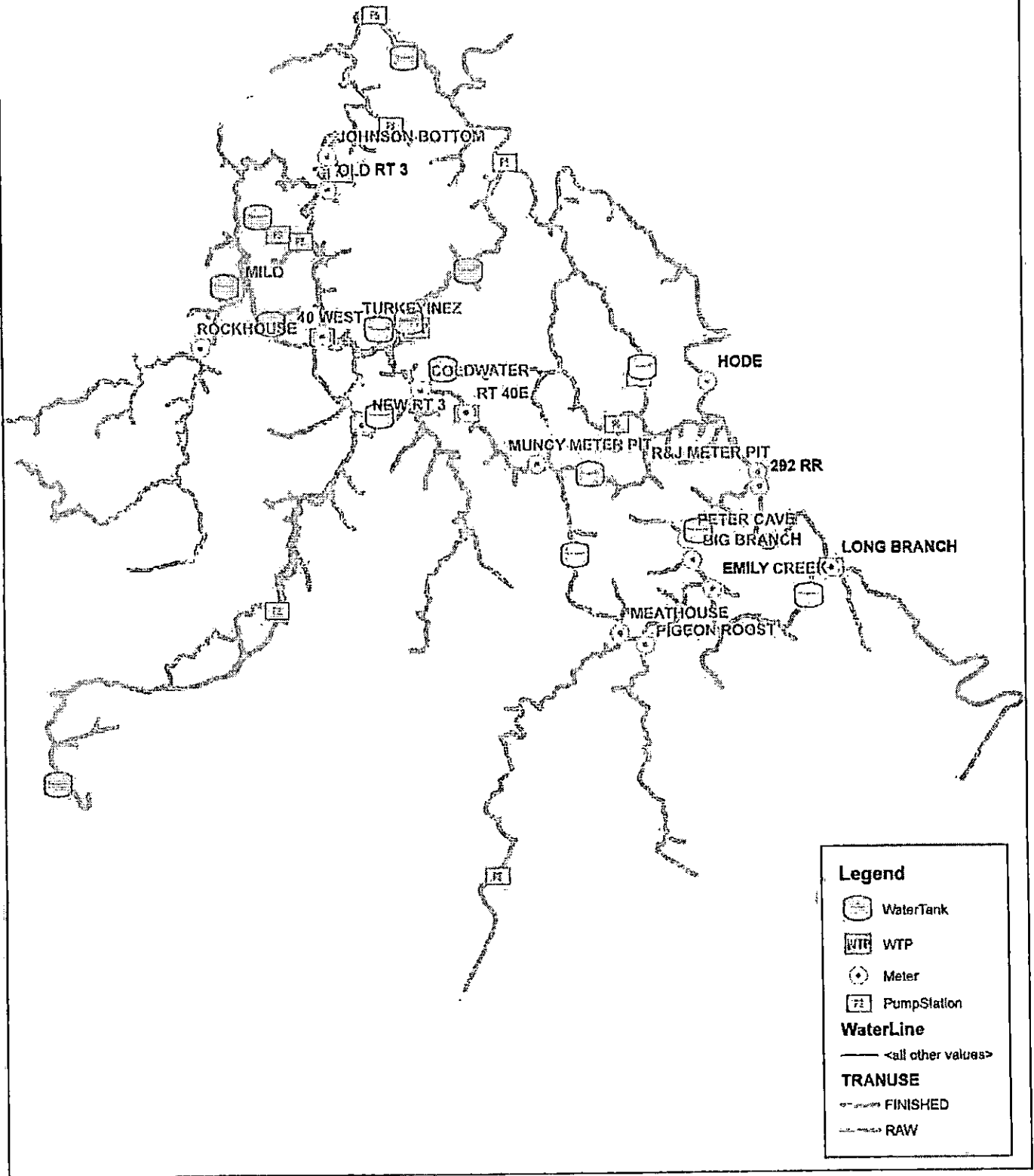


Exhibit #5
KRWA Forms

Monthly Water Use Report

Water Utility: PWSID:

For the Month of: Year:

1 PRODUCTION COST PER THOUSAND (insert cost)
 2 PURCHASE COST PER THOUSAND (insert cost)

GALLONS

WATER PRODUCED or PURCHASED		
3	Water Produced	<input style="width: 100%;" type="text"/>
4	Water Purchased	<input style="width: 100%;" type="text"/>
5	TOTAL PRODUCED AND PURCHASED	0
6	TOTAL COST	

WATER SOLD		
7	Residential	<input style="width: 100%;" type="text"/>
8	Commercial	<input style="width: 100%;" type="text"/>
9	Industrial	<input style="width: 100%;" type="text"/>
10	Bulk Loading Stations	<input style="width: 100%;" type="text"/>
11	Wholesale	<input style="width: 100%;" type="text"/>
12	Other Sales (explain)	<input style="width: 100%;" type="text"/>
13	TOTAL WATER SOLD	0
14	TOTAL WATER NOT SOLD	0

BREAKDOWN OF WATER USAGE		
15	Water Treatment Plant	<input style="width: 100%;" type="text"/>
16	Wastewater Treatment Plant	<input style="width: 100%;" type="text"/>
17	System Flushing	0
18	Fire Department Usage	0
19	DBP Flushing DBP Maintenance	0
20	TOTAL USAGE	0
21	WATER LOSS PERCENTAGE FOR RATE PURPOSES	<input style="width: 100%;" type="text"/>

BREAKDOWN OF WATER LOST		
22	Tank Overflows (other than for DBP maintenance)	<input style="width: 100%;" type="text"/>
23	Excavation Breaks	0
24	Repaired Line Breaks	0
25	Unknown Loss	0
26	TOTAL WATER NOT SOLD OR USED	0
27	COST OF WATER NOT SOLD OR USED	

"UNKNOWN LOSS" FLOW RATE AND COST:	
28	"Unknown Loss" 0
29	% "Unknown Loss"
30	(insert days of operation during month) Number of Days in Period <input style="width: 100%;" type="text"/>
31	"Unknown Loss" per Day (Gallons per Day)
32	"Unknown Loss" per Minute (GPM)
33	"Unknown Loss" Cost for Month

Leak Detection Report

Martin Co.

DATE:

Time In:

Water loss by percent:

Time Out:

Total Water

Total Sold

TTL Water Lost

Revenue loss per day:

Direct loss cost:

loss
Water Loss per Day: gpm

Billable Units:

Prod. Purch Cost: \$

Customer cost: \$

TTL #connections

System Demand (night) gpm

System Demand day gpm

#customers X .1157 X 30% = Est. pm flow rate

Section Valves/Tanks

	#CUST.	EST FLOW	ACT FLOW	NET LOSS
1		0		0
2		0		0
3		0		0
4		0		0
5		0		0
6		0		0
7		0		0
8		0		0
9		0		0
10		0		0

Monthly Leak Repair Report

0
 (Water System)
 0
 (PWSID)
 Month 0
 Year 0

Area Calculator

diameter in inches
 Hole= _____
 Area= 0.000 sq. in.

length (in) width (in)
 Crack= _____
 Area= 0 sq. in.

Insert the approximate dimensions of the hole or crack to determine the area of the break. Insert the area in the spreadsheet below.

Date of Repair	Location of Leak or Line Break	Days Line Leaked?	Hole or Crack?	Area of hole or crack	Normal PSI	GPM	Calculated Loss for Month	Estimated Loss for Month

Total Gallons Lost Due to Line Breaks 0

Exhibit #6
Current List for Disconnect 07/29/2016

Martin Co Water							
7/29/2016							
City	State	Zip	Current	0-30 Due	0-60 Due	0-90 Due	Amount Due
Inez	Ky	41224	\$64.92	\$30.03	\$30.03	\$0.00	\$124.98
INEZ	KY	41224	\$68.70	\$0.00	\$29.45	\$121.13	\$219.28
WARFIELD	KY	41267	\$60.39	\$0.00	\$0.00	\$1.72	\$62.11
Lovely	KY	41231	\$45.21	\$0.00	\$0.00	\$268.23	\$313.44
INEZ	KY	41224	\$30.03	\$30.03	\$30.03	\$0.00	\$90.09
Inez	KY	41224	\$166.66	\$166.66	\$166.66	\$1,334.32	\$1,834.30
WARFIELD	KY	41267	\$52.80	\$37.62	\$15.99	\$0.00	\$106.41
Lexington	KY	40523	\$30.03	\$30.03	\$6.73	\$0.00	\$66.79
Warfield	Ky	41267	\$37.62	\$52.80	\$52.80	\$95.83	\$239.05
Warfield	KY	41267	\$60.39	\$30.03	\$12.86	\$0.00	\$103.28
WARFIELD	KY	41267	\$37.62	\$30.03	\$30.03	\$18.19	\$115.87
Warfield	Ky	41267	\$45.21	\$37.62	\$37.62	\$0.00	\$120.45
Warfield	KY	41267	\$67.98	\$67.98	\$34.30	\$0.00	\$170.26
Inez	KY	41224	\$30.03	\$0.00	\$0.00	\$168.98	\$199.01
Warfield	KY	41267	\$71.13	\$30.03	\$25.09	\$0.00	\$126.25
Inez	KY	41224	\$57.33	\$30.03	\$2.73	\$0.00	\$90.09
LOVELY	KY	41231	\$57.33	\$30.03	\$3.42	\$0.00	\$90.78
LOVELY	KY	41231	\$68.70	\$0.00	\$113.53	\$8.75	\$190.98
Lovely	KY	41231	\$126.31	\$37.62	\$41.78	\$0.00	\$205.71
Lovely	KY	41231	\$144.27	\$52.80	\$75.57	\$13.19	\$285.83
LOVELY	KY	41231	\$220.18	\$28.37	\$0.00	\$106.73	\$355.28
Warfield	KY	41267	\$115.29	\$67.98	\$75.57	\$13.19	\$272.03
LOVELY	KY	41231	\$57.33	\$30.03	\$0.00	\$123.65	\$211.01
LOVELY	KY	41231	\$258.83	\$30.03	\$36.04	\$0.00	\$324.90
Lovely	KY	41231	\$199.48	\$181.85	\$6.18	\$0.00	\$387.51
LOVELY	KY	41231	\$87.00	\$30.03	\$36.64	\$0.00	\$153.67
LOVELY	KY	41231	\$86.31	\$30.03	\$2.73	\$0.00	\$119.07
LOVELY	KY	41231	\$107.01	\$30.03	\$10.63	\$0.00	\$147.67
LOVELY	KY	41231	\$153.94	\$30.03	\$5.49	\$0.00	\$189.46
Pilgrim	KY	41250	\$133.24	\$30.03	\$10.24	\$0.00	\$173.51
Pilgrim	KY	41250	\$57.33	\$30.03	\$9.64	\$0.00	\$97.00
Pilgrim	Ky	41250	\$109.77	\$113.53	\$60.39	\$0.00	\$283.69
Pilgrim	KY	41250	\$80.10	\$37.62	\$52.80	\$242.41	\$412.93

Pilgrim	Ky	-41250	\$34.20	\$0.00	\$0.00	\$193.66	\$227.86
Pilgrim	KY	-41250	\$118.05	\$45.60	\$0.00	\$241.55	\$405.20
Pilgrim	KY	-41250	\$48.00	\$0.00	\$0.00	\$13.74	\$61.74
WARFIELD	KY	41267	\$93.90	\$30.03	\$52.80	\$0.58	\$177.31
Pilgrim	KY	-41250	\$64.92	\$0.00	\$0.00	\$149.02	\$213.94
Lovely	KY	-41231	\$112.51	\$30.03	\$60.75	\$0.00	\$203.29
INEZ	KY	41224	\$87.00	\$37.62	\$8.55	\$0.00	\$133.17
Tomahawk	KY	-41262	\$124.95	\$52.80	\$3.04	\$0.00	\$180.79
Pilgrim	KY	-41250	\$57.33	\$30.03	\$30.03	\$36.97	\$154.36
Pilgrim	Ky	-41250	\$74.20	\$0.00	\$0.00	\$219.37	\$293.57
PILGRIM	KY	41250	\$72.51	\$60.39	\$52.80	\$8.73	\$194.43
Pilgrim	KY	41250	\$86.31	\$45.21	\$2.86	\$0.00	\$134.38
Pilgrim	KY	41250-886	\$79.41	\$45.21	\$8.85	\$0.00	\$133.47
WARFIELD	KY	41267	\$72.51	\$30.03	\$25.21	\$0.00	\$127.75
Warfield	KY	-41267	\$212.59	\$181.85	\$150.15	\$0.00	\$544.59
Warfield	KY	-41267	\$133.90	\$45.21	\$52.80	\$58.78	\$290.69
Lovely	KY	-41231	\$124.26	\$75.57	\$1.49	\$0.00	\$201.32
WARFIELD	KY	41267	\$64.82	\$30.03	\$2.62	\$0.00	\$97.57
LOVELY	KY	41231	\$57.33	\$30.03	\$3.10	\$0.00	\$90.46
LOVELY	KY	41231	\$87.69	\$52.80	\$36.56	\$0.00	\$177.05
Lovely	KY	-41231	\$222.92	\$105.94	\$98.34	\$42.11	\$469.31
BELFRY	KY	-41514	\$79.41	\$37.62	\$22.20	\$0.00	\$139.23
Lovely	KY	-41231	\$109.08	\$45.21	\$12.98	\$0.00	\$167.27
Lovely	KY	-41231	\$72.51	\$37.62	\$61.03	\$0.00	\$161.16
Beauty	KY	-41203	\$115.98	\$52.80	\$38.21	\$0.00	\$207.99
BEAUTY	KY	41203	\$123.57	\$86.32	\$0.00	\$157.14	\$367.03
LOVELY	KY	41231	\$57.33	\$30.03	\$20.12	\$0.00	\$107.48
BEAUTY	KY	41203	\$30.03	\$30.03	\$30.03	\$50.81	\$140.90
Warfield	Ky	-41267	\$159.07	\$37.62	\$37.62	\$21.50	\$255.81
BEAUTY	KY	41203	\$98.34	\$83.16	\$60.39	\$250.57	\$492.46
BEAUTY	KY	41203	\$37.62	\$52.80	\$22.64	\$0.00	\$113.06
Beauty	KY	-41203	\$0.00	\$41.50	\$30.03	\$169.47	\$241.00
Inez	KY	41224	\$10.12	\$45.21	\$52.80	\$50.42	\$158.55
INEZ	KY	41224	\$83.16	\$45.21	\$5.49	\$0.00	\$133.86
Inez	KY	-41224	\$113.53	\$90.75	\$67.98	\$74.69	\$346.95
Beauty	KY	-41203	\$30.03	\$30.03	\$22.86	\$0.00	\$82.92
Inez	Ky	-41224	\$103.72	\$90.75	\$75.57	\$226.81	\$496.85

Inez	KY	-41224	\$57.33	\$30.03	\$12.18	\$0.00	\$98.54
Inez	KY	-41224	\$109.06	\$37.62	\$30.03	\$126.18	\$302.91
INEZ	KY	41224	\$79.41	\$37.62	\$37.62	\$17.25	\$171.90
INEZ	KY	41224	\$57.33	\$30.03	\$7.62	\$0.00	\$94.98
INEZ	KY	-41224	\$64.92	\$30.03	\$10.06	\$62.98	\$167.99
INEZ	KY	41224	\$64.92	\$37.62	\$0.00	\$191.92	\$294.46
INEZ	KY	41224	\$72.51	\$37.62	\$8.42	\$0.00	\$118.55
INEZ	KY	41224	\$57.33	\$30.03	\$27.87	\$0.00	\$115.23
Inez	KY	-41224	\$57.33	\$30.03	\$2.73	\$0.00	\$90.09
INEZ	KY	41224	\$85.93	\$60.39	\$60.39	\$152.31	\$359.02
INEZ	KY	41224	\$72.51	\$37.62	\$4.11	\$0.00	\$114.24
INEZ	KY	41224	\$94.59	\$45.21	\$3.42	\$0.00	\$143.22
INEZ	KY	41224	\$447.73	\$224.58	\$208.51	\$24.74	\$905.56
INEZ	KY	41224	\$106.74	\$75.57	\$67.98	\$0.00	\$249.29
Inez	KY	-41224	\$172.65	\$37.62	\$52.80	\$181.97	\$425.04
Louisa	KY	-41230	\$78.03	\$67.98	\$4.11	\$0.00	\$150.12
Inez	KY	41224]	\$152.55	\$45.21	\$22.33	\$0.00	\$220.09
Inez	Ky	-41224	\$138.75	\$0.00	\$0.00	\$130.41	\$269.16
Inez	KY	-41224	\$137.33	\$45.21	\$108.22	\$0.00	\$290.76
INEZ	KY	41224	\$93.21	\$45.21	\$3.65	\$0.00	\$142.07
Inez	KY	-41224	\$100.80	\$30.03	\$30.03	\$209.99	\$370.85
Inez	KY	-41224	\$57.33	\$74.03	\$32.83	\$0.00	\$164.19
INEZ	KY	41224	\$158.07	\$67.98	\$33.58	\$0.00	\$259.63
Inez	KY	-41224	\$0.00	\$0.00	\$0.00	\$36.31	\$36.31
Inez	KY	-41224	\$92.52	\$67.98	\$30.03	\$53.31	\$243.84
Inez	KY	-41224	\$170.21	\$71.94	\$12.11	\$0.00	\$254.26
Inez	Ky	-41224	\$158.07	\$75.57	\$1.56	\$0.00	\$235.20
INEZ	KY	41224	\$251.24	\$60.39	\$2.04	\$0.00	\$313.67
INEZ	KY	41224	\$57.33	\$30.03	\$0.03	\$0.00	\$87.39
INEZ	KY	41224-09	\$67.98	\$67.98	\$37.69	\$0.00	\$173.65
INEZ	KY	41224	\$321.63	\$37.62	\$45.21	\$86.32	\$490.78
INEZ	KY	41224	\$108.39	\$45.21	\$60.39	\$468.77	\$682.76
Inez	KY	-41224	\$57.33	\$30.03	\$6.20	\$0.00	\$93.56
INEZ	KY	41224]	\$72.51	\$45.21	\$30.03	\$17.65	\$165.40
INEZ	KY	41224	\$87.00	\$37.62	\$27.72	\$0.00	\$152.34

Inez	KY	-41224	\$80.10	\$60.39	\$60.39	\$25.42	\$226.30
Inez	KY	-41224	\$72.51	\$37.62	\$37.62	\$306.04	\$453.79
Inez	Ky	-41224	\$41.10	\$34.60	\$0.00	\$571.25	\$646.95
INEZ	KY	41224	\$86.31	\$30.03	\$30.51	\$0.00	\$146.85
INEZ	KY	41224	\$160.84	\$67.98	\$11.53	\$0.00	\$240.35
Inez	KY	-41224	\$72.51	\$30.03	\$15.25	\$0.00	\$117.79
Inez	KY	-41224	\$178.09	\$121.12	\$52.71	\$0.00	\$351.92
Debord	KY	-41214	\$87.00	\$45.21	\$37.62	\$28.06	\$197.89
Debord	KY	-41214	\$71.82	\$0.00	\$37.62	\$137.50	\$246.94
DEBORD	KY	41214	\$27.30	\$0.00	\$0.00	\$37.92	\$65.22
Debord	Ky	-41214	\$64.23	\$45.21	\$3.00	\$0.00	\$112.44
Debord	KY	-41214	\$57.33	\$30.03	\$30.03	\$0.00	\$117.39
INEZ	KY	41224	\$80.10	\$45.21	\$4.80	\$0.00	\$130.11
Inez	KY	-41224	\$1,203.58	\$296.88	\$256.71	\$644.53	\$2,401.70
INEZ	KY	41224	\$86.31	\$45.21	\$4.11	\$0.00	\$135.63
Inez	KY	-41224	\$86.31	\$37.62	\$4.11	\$0.00	\$128.04
INEZ	KY	41224	\$72.51	\$45.21	\$30.03	\$32.83	\$180.58
INEZ	KY	41224	\$27.30	\$10.06	\$30.03	\$72.98	\$140.37
Louisa	KY	41230-546	\$101.49	\$37.62	\$4.11	\$0.00	\$143.22
Inez	Ky	-41224	\$87.00	\$45.21	\$13.19	\$0.00	\$145.40
LOUISA	KY	41230	\$138.06	\$60.39	\$6.18	\$0.00	\$204.63
Louisa	KY	-41230	\$102.87	\$30.03	\$0.00	\$844.11	\$977.01
Inez	Ky	-41224	\$43.00	\$0.00	\$0.00	\$99.62	\$142.62
LOUISA	KY	41230	\$57.33	\$37.62	\$0.42	\$0.00	\$95.37
LOUISA	KY	41230	\$136.68	\$0.00	\$0.80	\$268.86	\$406.34
Louisa	KY	-41230	\$75.60	\$0.00	\$0.00	\$312.78	\$388.38
Louisa	KY	-41230	\$123.57	\$67.98	\$67.98	\$143.63	\$403.16
Louisa	KY	-41230	\$122.88	\$67.98	\$52.80	\$17.42	\$261.08
LOUISA	KY	41230	\$93.90	\$52.80	\$13.94	\$0.00	\$160.64
Louisa	KY	-41230	\$94.69	\$30.03	\$30.03	\$19.65	\$174.30
Louisa	KY	41230	\$107.70	\$45.21	\$13.10	\$0.00	\$165.01
INEZ	KY	41224	\$126.34	\$0.00	\$98.34	\$79.59	\$304.27
Inez	KY	-41224	\$87.00	\$67.98	\$52.97	\$0.00	\$207.95
Inez	KY	-41224	\$57.33	\$30.03	\$17.74	\$0.00	\$105.10
INEZ	KY	41224	\$93.90	\$52.80	\$4.80	\$0.00	\$151.50
Inez	KY	-41224	\$27.30	\$18.05	\$159.07	\$90.63	\$295.05
Inez	Ky	-41224	\$78.72	\$37.62	\$6.90	\$0.00	\$123.24

Inez	KY	41224	\$129.78	\$60.39	\$25.81	\$0.00	\$216.98
Inez	Ky	-41224	\$108.39	\$45.21	\$32.52	\$0.00	\$186.12
INEZ	KY	41224	\$128.40	\$37.62	\$45.21	\$39.65	\$250.88
INEZ	KY	41224	\$138.75	\$0.00	\$36.70	\$0.00	\$175.45
HAGAR HILL	KY	-41222	\$31.78	\$31.78	\$31.78	\$53.98	\$149.32
Inez	Ky	-41224	\$45.21	\$45.21	\$52.80	\$118.03	\$261.25
INEZ	KY	41224	\$166.66	\$166.66	\$364.03	\$2,546.29	\$3,243.64
INEZ	KY	41224	\$31.78	\$31.78	\$31.78	\$0.00	\$95.34
INEZ,	KY	41224	\$30.03	\$30.03	\$30.03	\$120.12	\$210.21
Tomahawk	Ky	-41262	\$60.39	\$37.62	\$4.11	\$0.00	\$102.12
TOMAHAWK	KY	41262	\$45.21	\$37.62	\$37.62	\$25.24	\$145.69
Inez	KY	41224	\$152.27	\$152.27	\$125.51	\$0.00	\$430.05
TOMAHAWK	KY	41262	\$30.03	\$37.62	\$15.09	\$5.83	\$88.37
Inez	KY	-41224	\$75.57	\$83.16	\$105.94	\$120.88	\$385.35
Tomahawk	Ky	41262	\$30.03	\$37.62	\$30.03	\$75.24	\$172.92
TOMAHAWK	KY	41262	\$30.03	\$30.03	\$1.43	\$0.00	\$61.49
Tomahawk	KY	-41262	\$98.34	\$0.00	\$87.74	\$184.28	\$370.36
INEZ	KY	41224	\$67.98	\$0.00	\$0.00	\$107.84	\$175.82
Tomahawk	Ky	-41262	\$90.75	\$60.39	\$75.57	\$143.55	\$370.26
INEZ	KY	41224	\$37.62	\$4.62	\$37.62	\$275.00	\$354.86
INEZ	KY	41224	\$174.25	\$136.30	\$7.08	\$0.00	\$317.63
Tomahawk	KY	41262	\$60.39	\$45.21	\$15.65	\$0.00	\$121.25
TOMAHAWK,	KY	41262	\$30.03	\$30.03	\$37.62	\$38.15	\$135.83
Tomahawk	KY	41262	\$60.39	\$45.21	\$45.21	\$13.22	\$164.03
TOMAHAWK	KY	41262	\$45.21	\$52.80	\$27.29	\$0.00	\$125.30
Tomahawk	KY	-41262	\$30.03	\$30.03	\$7.25	\$0.00	\$67.31
Tomahawk	Ky	-41262	\$37.62	\$45.21	\$18.07	\$0.00	\$100.90
TOMAHAWK	KY	41262	\$52.80	\$0.00	\$42.30	\$0.00	\$95.10
Tomahawk	KY	41262	\$60.39	\$45.21	\$4.11	\$0.00	\$109.71
Tomahawk	KY	-41262	\$30.03	\$98.34	\$15.65	\$0.00	\$144.02
INEZ,	KY	41224	\$90.75	\$45.21	\$45.21	\$111.19	\$292.36
Inez	KY	-41224	\$45.21	\$37.62	\$1.40	\$0.00	\$84.23
Tomahawk	Ky	41262	\$45.21	\$30.03	\$5.76	\$0.00	\$81.00
Tomahawk	Ky	-41262	\$30.03	\$37.62	\$48.45	\$0.00	\$116.10
Williamson	WV	-25661	\$131.85	\$45.21	\$3.42	\$0.00	\$180.48

\$16,964.67	\$8,172.24	\$5,861.60	\$13,933.26	\$44,931.77
-------------	------------	------------	-------------	-------------

Exhibit #7
Water Loss Reports

Monthly Water Use Report

Water Utility: **Martin County Water District**

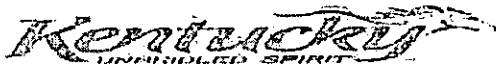
For the Month of: **June**

Year: **2016**

LINE #	ITEM	GALLONS (Omit 000's)	%
1	WATER PRODUCED or PURCHASED		
2	Water Produced	58.356	100%
3	Water Purchased	0.285	0%
4	TOTAL PRODUCED AND PURCHASED:	58.641	
WATER SOLD			
5	Residential	18.160	84%
6	Commercial	0.000	0%
7	Industrial		0%
8	Bulk Loading Stations		0%
9	Wholesale		0%
10	Other Sales (explain) Honey Branch Industrial Park	3.481	16%
11	TOTAL WATER SOLD	21.641	37%
12	TOTAL WATER NOT SOLD	37.000	63%
BREAKDOWN OF UNSOLD WATER USED			
13	Utility and/or Water Treatment Plant	0.491	1%
14	Wastewater Plant Estimated	0.000	0%
15	System Flushing Estimated	0.750	1%
16	Fire Department Estimated	0.350	1%
17	Other (explain)		0%
TOTAL UNSOLD WATER USED		1.591	3%
BREAKDOWN OF WATER LOST			
18	Tank Overflows Estimated	0.000	0%
19	Line Breaks Estimated	3.500	6%
20	Other Loss	31.909	54%
TOTAL WATER LOST		35.409	60%

"OTHER LOSS" FLOW RATE CALCULATION:

21		"Other Loss"	31.909
22		% "Other Loss"	54%
23		Number of Days in Period	30
24		"Other Loss" per Day (1,000's gallons per Day)	1.064
25		"Other Loss" per Minute (GPM)	0.739



This form approved by: EPPC/DEP/DOW, KY PSC; KRWA

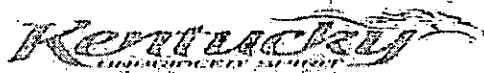
Monthly Water Use Report

Water Utility: **Martin County Water District**

For the Month of: **May**

Year: **2016**

LINE #	ITEM	GALLONS (Omit 000's)	%
WATER PRODUCED or PURCHASED			
1	Water Produced	58.563	99%
2	Water Purchased	0.348	1%
3	TOTAL PRODUCED AND PURCHASED:		58.911
WATER SOLD			
4	Residential	14.214	84%
5	Commercial	0.000	0%
6	Industrial		0%
7	Bulk Loading Stations		0%
8	Wholesale		0%
9	Other Sales (explain)	2.782	16%
10	TOTAL WATER SOLD:		16.996
11	TOTAL WATER NOT SOLD:		41.915
12			
BREAKDOWN OF UNSOLD WATER USED			
13	Utility and/or Water Treatment Plant	0.516	1%
14	Wastewater Plant	0.000	0%
15	System Flushing	1.250	2%
16	Fire Department	0.250	0%
17	Other (explain)	0.000	0%
TOTAL UNSOLD WATER USED:		2.016	3%
BREAKDOWN OF WATER LOST			
18	Tank Overflows	0.000	0%
19	Line Breaks	1.250	2%
20	Other Loss	38.649	66%
TOTAL WATER LOST:		39.899	68%
"OTHER LOSS" FLOW RATE CALCULATION:			
21	"Other Loss"	38.649	
22	% "Other Loss"	66%	
23	Number of Days in Period	31	
24	"Other Loss" per Day (1,000's gallons per Day)	1.247	
25	"Other Loss" per Minute (GPM)	0.866	



This form approved by: EPPC/DEP/DOW, KY PSC, KRWA

Exhibit #8
Boil Water Advisory

MARTIN COUNTY WATER DISTRICT
387 E. Main Street, Suite 140
INEZ, KY 41224
606-298-3885

298-4913 FAX

BOIL WATER ADVISORY

Date Issue: August 26, 2013

Time Issued 9:00 PM

N/C #: 2013-4461

A Boil Water Advisory is in effect for the customers of: Intersection Rt 40 and Rt 908 and including residents of Inez.

This Advisory has been issued due to the following reason: 6" main located at the corner of the construction site for the new courthouse. Contractors were working on relocating the water line in order to begin construction of the courthouse. This affected approximately 150 customers.

Following such an event, the potential exists for bacteriological contamination of the water supply; therefore this boil water advisory has been issued as a precautionary measure. Until further notice, boil all water used for drinking and cooking, bringing the water to a rolling boil for three (3) minutes before using.

This advisory will remain in effect until the situation has been corrected, and test results have shown the water to be of an acceptable quality.

Issued By: Duty Officer Baggett, Division of Water

Issued By: Joe Hammond, Martin County Water

MARTIN COUNTY WATER DISTRICT
HC 69 BOX 875
INEZ, KY 41224

606-298-3885-OFFICE

606-298-4913-FAX

BOIL WATER ADVISORY

Date Issued: 09/23/2013

Time Issued: 8:45 pm

N/C #: 2013-5016

A Boil Water Advisory is in effect for the customers of: Beginning South on Route 908 at the Martin County Water Plant and extending to West on Route 40 to the 40 West Pump Station and going East to the 40 East Pump Station, including residents of Coldwater Road and Little Blacklog.

This Advisory has been issued due to the following reason: Break in a 14 inch transmission line. Repairs has been made. The outage lasted approximately four (4) hours. This effected approximately 175 customers.

Following such an event, the potential exists for bacteriological contamination of the water supply; therefore this:boil water advisory has been issued as a precautionary measure. Until further notice, boil all water used for drinking and cooking, bringing the water to a rolling boil for three (3) minutes before using.

This advisory will remain in effect until the situation has been corrected, and test results have shown the water to be of an acceptable quality.

Issued By: Duty Officer Updyke, DOW

Issued By: Joe Hammond, Martin County Water District Staff

MARTIN COUNTY WATER DISTRICT

HC 69 BOX 875
INEZ, KY 41224

606-298-3685 OFFICE

606-298-4913 FAX

Release of Boil Water Advisory September 25, 2013

A Boil Water Advisory issued on September 23, 2013, NC #2013-5016 for the following area(s) Beginning South on Route 908 at the Martin County Water Plant and extending West on Route 40 to the 40 West Pump Station and East to the 40 East Pump Station, including residents of Coldwater and Blacklog Road. All locations are located in Martin County, KY. Date and Time of release was September 25, 2013 @ 11:30 a. m. for the customers of Martin County Water District, as listed in the above areas.

The above advisory has been lifted by Paul Rogers, with the Division of Water. The advisory notice was received at 11:30 a.m.

Thank You

Joe Hammond
Joe Hammond
Martin County Water District
606-298-7439 ext 5

MARTIN COUNTY WATER DISTRICT
387 E. Main Street, Suite 140
INEZ, KY 41224
606-298-3885

298-4913 FAX

BOIL WATER ADVISORY

Date Issue: December 19, 2013

Time Issued 2:00 PM

N/C #: 2371065

A Boil Water Advisory is in effect for the customers of: Intersection Rt 292 at Trinity Church extending to the 292 Pump Station at Evans Hill, and at the Intersection of 292 and 1714 extending to Little Petercave.

This Advisory has been issued due to the following reason: 8" main located at the intersection of Kermit Bridge and Route 292 developed a split in the line. This affected approximately 175 customers.

Following such an event, the potential exists for bacteriological contamination of the water supply; therefore this boil water advisory has been issued as a precautionary measure. Until further notice, boil all water used for drinking and cooking, bringing the water to a rolling boil for three (3) minutes before using.

This advisory will remain in effect until the situation has been corrected, and test results have shown the water to be of an acceptable quality.

Issued By: Damon White, Division of Water

Issued By: Joe Hammond, Martin County Water

Joe Hammond

From: Joe Hammond <jhammond58@bellsouth.net>
Sent: Thursday, December 26, 2013 10:51 AM
o: Big Joe Hammond
Subject: Fwd: Release of Boil Water

Sent from my iPhone

Begin forwarded message:

From: Joe Hammond <jhammond58@bellsouth.net>
Date: December 24, 2013 at 12:39:34 PM EST
To: Tom Alley <etalley47@bellsouth.net>, Nita Collier <nc@suddenlink.net>, Greg Cornette <greg.cornette@kyschools.us>, Marcie Dials <marciedials@bellsouth.net>, Big Joe Hammond <jhammond58@bellsouth.net>, A J Haney <jhaney72@hotmail.com>, Bill Harvey <harveybk@suddenlink.net>, John Mills <jmills@bellsouth.net>, Mountain Citizen <mountaincitizen@bellsouth.net>, George Wakin <PSCwaternotice@ky.gov>, WSAZ TV <newschannel3@wsaz.com>, WYMT TV <newsrelease@wymtnews.com>
Subject: Release of Boil Water

The Boil Water Advisory issued on December 19, 2013, NC #2371065 has been lifted.

The release was lifted by the following:

Division of Water
Martin County Water

Thanks

Joe Hammond
Martin County Water

Sent from my iPhone

MARTIN COUNTY WATER DISTRICT
387 E. Main Street, Suite 140
INEZ, KY 41224

298-4913 FAX

606-298-3885

BOIL WATER ADVISORY

Date Issue: September 22, 2014

Time Issued 10:40 AM

N/C #: 2384442

A Boil Water Advisory is in effect for the customers of: Beginning at Route 2032, including Routes 1714, 1439, and 3402 to the end of Meathouse. These locations are in Martin County Kentucky.

This Advisory has been issued due to the following reason: A break in the main line on 2032. This affects approximately 465 customers.

Following such an event, the potential exists for bacteriological contamination of the water supply; therefore this boil water advisory has been issued precautionary measure. Until further notice, boil all water used for drinking and cooking, bringing the water to a rolling boil for three (3) minutes before using.

This advisory will remain in effect until the situation has been corrected, and test results have shown the water to be of an acceptable quality.

Issued By: Damon White, Division of Water
Issued By: Marcie Dials, Martin County Water

MARTIN COUNTY WATER DISTRICT
387 E. Main Street, Suite 140
INEZ, KY 41224

298-4913 FAX

606-298-3885

BOIL WATER ADVISORY

Date Issue: October 6, 2014

Time Issued 2:35 PM

N/C #: 4385050

A Boil Water Advisory is in effect for the customers of Rt. 1714, Pigeon Roost. This location is in Martin County Kentucky.

This Advisory has been issued due to the following reason: A break in the main line on 1714. This affects approximately 60 customers.

Following such an event, the potential exists for bacteriological contamination of the water supply; therefore this boil water advisory has been issued precautionary measure. Until further notice, boil all water used for drinking and cooking, bringing the water to a rolling boil for three (3) minutes before using.

This advisory will remain in effect until the situation has been corrected, and test results have shown the water to be of an acceptable quality.

Issued By: Damon White, Division of Water
Issued By: Marcie Dials, Martin County Water

MARTIN COUNTY WATER DISTRICT

387 E. Main St Suite 140
INEZ, KY 41224

606-298-3885 OFFICE

606-298-4913 FAX

Release of Boil Water Advisory

A Boil Water Advisory issued on Oct. 6th, 2014, NC # 4385050 has been released. The affected area was Route 1714, Pigeon Roost in Martin County, Kentucky. The advisory has been released as of Oct. 8th, 2014. Time of release was 3:45 p.m. The above advisory has been lifted by Damon White, with the Division of Water.

Thank You

Marcie Dials
Martin County Water District
606-298-3885

MARTIN COUNTY WATER DISTRICT
387 E. Main Street, Suite 140
INEZ, KY 41224

298-4913 FAX

606-298-3885

BOIL WATER ADVISORY

Date Issue: December 16th, 2014

Time Issued 10:50 AM

N/C #: 2387677

A Boil Water Advisory is in effect for the customers of: Beginning at Trinity Freewill Baptist on RT 292 and continuing to R & J Building Supply. These locations are in Martin County Kentucky.

This Advisory has been issued due to the following reason: A break in the main line on 292. This affects approximately 75 customers.

Following such an event, the potential exists for bacteriological contamination of the water supply; therefore this boil water advisory has been issued precautionary measure. Until further notice, boil all water used for drinking and cooking, bringing the water to a rolling boil for three (3) minutes before using.

This advisory will remain in effect until the situation has been corrected, and test results have shown the water to be of an acceptable quality.

Issued By: Damon White, Division of Water
Issued By: Marcie Dials, Martin County Water

MARTIN COUNTY WATER DISTRICT

387 E Main St Suite 140
INEZ, KY 41224

606-298-3885 OFFICE

606-298-4913 FAX

Release of Boil Water Advisory

A Boil Water Advisory issued on December 16th, 2014, N/C # 2387677 for the following area(s): beginning at Trinity Freewill Baptist on RT 292 and continuing to R & J Building Supply, located in the Martin County, KY area. This Advisory has been released as of December 22nd, 2014. Time of release was 2:30 pm. The above advisory has been lifted by Damon White with the Division of Water, Hazard, KY.

Thank You

Marcie Dials
Martin County Water District
606-298-7439
606-298-3885

MARTIN COUNTY WATER DISTRICT
387 E. Main Street, Suite 140
INEZ, KY 41224

298-4913 FAX

606-298-3885

BOIL WATER ADVISORY

Date Issue: August 7, 2015

Time Issued 3:29 P.M.

N/C #:2400142

A Boil Water Advisory is in effect for the customers from the Elk Creek pump station to the OK Corral on Hode. Location is Martin County, KY. This Advisory has been issued due to pump station issues. This affects approximately 100 customers.

Following such an event, the potential exists for bacteriological contamination of the water supply; therefore this boil water advisory has been issued as a precautionary measure. Until further notice, boil all water used for drinking and cooking, bringing the water to a rolling boil for three (3) minutes before using.

This advisory will remain in effect until the situation has been corrected, and test results have shown the water to be of an acceptable quality.

Issued By: Damon White, Division of Water

Issued By: Marcie Dials, Martin County Water

MARTIN COUNTY WATER DISTRICT
387 E. Main Street, Suite 140
INEZ, KY 41224

298-4913 FAX

606-298-3885

BOIL WATER ADVISORY

Date Issue: November 5, 2015

Time Issued: 3:00 PM

N/C #: 2403421

A boil water advisory is in effect for the customers of Little Blacklog from the pump station to the end of the water line.

This Advisory has been issued due to the following reason: A main water line break. This advisory affects approximately 15 customers.

Following such an event, the potential exists for bacteriological contamination of the water supply; therefore this boil water advisory has been issued precautionary measure. Until further notice, boil all water used for drinking and cooking, bringing the water to a rolling boil for three (3) minutes before using.

This advisory will remain in effect until the situation has been corrected, and test results have shown the water to be of an acceptable quality.

Issued By: Damon White, Division of Water
Issued By: Marcie Dials, Office Manager

MARTIN COUNTY WATER DISTRICT

387 E Main St Suite 140
INEZ, KY 41224

606-298-3885 OFFICE

606-298-4913 FAX

Release of Boil Water Advisory

A Boil Water Advisory issued on November 5, 2015, N/C # 2403421 for the following area; Little Blacklog, from the pump station to the end of the line. This area is located in Martin County, KY. This Advisory has been released as of November 7, 2015. Time of release was 10:15 a.m. The above advisory has been lifted by Mr. Robert Francis with the Division of Water.

Thank You

Marcie Dials
Martin County Water District

MARTIN COUNTY WATER DISTRICT
387 E. Main Street, Suite 140
INEZ, KY 41224

298-4913 FAX

606-298-3885

BOIL WATER ADVISORY

Date Issue: February 21, 2015

Time Issued 9:30 A.M.

N/C #: 2015-0983

A Boil Water Advisory is in effect for the entire Martin County Water District: Located in Martin County Kentucky.

This Advisory has been issued due to system wide low water pressure: This is due to extreme cold weather causing water lines and meters freezing and bursting at an alarming rate. All our distribution employees are out trying to repair the problems. This has affected the entire Martin County. Also, a power outage has caused one of our clarifiers to not function properly, which we are working to repair.

Following such an event, the potential exists for bacteriological contamination of the water supply; therefore this boil water advisory has been issued as a precautionary measure. Until further notice, boil all water used for drinking and cooking, bringing the water to a rolling boil for three (3) minutes before using.

This advisory will remain in effect until the situation has been corrected, and test results have shown the water to be of an acceptable quality.

Issued By: Officer Baggett, Division of Water

Issued By: Joe Hammond, Martin County Water

MARTIN COUNTY WATER DISTRICT
387 E. Main Street, Suite 140
INEZ, KY 41224

298-4913 FAX

606-298-3885

BOIL WATER ADVISORY

Date Issue: March 2nd, 2015

Time Issued 10:00 A.M.

N/C #:2390403

A Boil Water Advisory is in effect from Buck Creek Hill to Beauty, entire Warfield area including Hode, and Rt. 1714 to Little Peter Cave: Located in Martin County, Kentucky.

This Advisory has been issued due to low water pressure.

Following such an event, the potential exists for bacteriological contamination of the water supply; therefore this boil water advisory has been issued as a precautionary measure. Until further notice, boil all water used for drinking and cooking, bringing the water to a rolling boil for three (3) minutes before using.

This advisory will remain in effect until the situation has been corrected, and test results have shown the water to be of an acceptable quality.

Issued By: Robert Back, Division of Water

Issued By: Marcie Dials, Martin County Water

MARTIN COUNTY WATER DISTRICT

387 East Main St Sulte 140
INEZ, KY 41224

606-298-3885 OFFICE

606-298-4913 FAX

Release of Boil Water Advisory

A Boil Water Advisory issued on March 2, 2015, NC #2390403 for the following area(s): From Buck Creek Hill to Beauty, entire Warfield area including Hode, and Rt. 1714 to Little Peter Cave, Located in Martin County, Kentucky. The above advisory has been lifted by Mr. Damon White with the Division of Water, Frankfort, Ky. The advisory notice was received March 3, 2015 10:50 a.m.

Thank You

Marcie Dials
Martin County Water District

MARTIN COUNTY WATER DISTRICT
387 E. Main Street, Suite 140
INEZ, KY 41224

298-4913 FAX

606-298-3885

BOIL WATER ADVISORY

Date Issue: March 4th, 2015

Time Issued 12:55 P.M.

N/C #:2390631

A Boil Water Advisory is in effect from Long Branch on Rt. 292 to the end of Rt. 292 at the Pike County line: Located in Martin County, Kentucky.

This Advisory has been issued due a water main break in Long Branch. This affects approximately 200 customers.

Following such an event, the potential exists for bacteriological contamination of the water supply; therefore this boil water advisory has been issued as a precautionary measure. Until further notice, boil all water used for drinking and cooking, bringing the water to a rolling boil for three (3) minutes before using.

This advisory will remain in effect until the situation has been corrected, and test results have shown the water to be of an acceptable quality.

Issued By: Robert Back, Division of Water

Issued By: Marcie Dials, Martin County Water

MARTIN COUNTY WATER DISTRICT
387 E. Main Street, Suite 140
INEZ, KY 41224

298-4913 FAX

606-298-3885

BOIL WATER ADVISORY

Date Issue: March 6th, 2015

Time Issued 2:30 PM

N/C #:2390893

A Boil Water Advisory is in effect from Buck Creek Hill to Beauty, entire Warfield area including Hode, and Rt. 1714 to Little Peter Cave: Located in Martin County, Kentucky. This affects approximately 600 customers.

This Advisory has been issued due to low water pressure at night from turning the valve off at the Buck Creek Tank.

Following such an event, the potential exists for bacteriological contamination of the water supply; therefore this boil water advisory has been issued as a precautionary measure. Until further notice, boil all water used for drinking and cooking, bringing the water to a rolling boil for three (3) minutes before using.

This advisory will remain in effect until the situation has been corrected, and test results have shown the water to be of an acceptable quality.

Issued By: Damon White, Division of Water

Issued By: Marcie Dials, Martin County Water

MARTIN COUNTY WATER DISTRICT
387 East Main St Suite 140
Inez, KY 41224

606-298-4913 FAX 606-298-3885

BOIL WATER ADVISORY

Date Issue: March 7, 2015

Time Issued: 9:30 PM

N/C# 2015-1382

A boil water advisory is in effect from Frog Pond to the end of Meathouse and from Pigeon Roost to Little Peter Cave, located in Martin County, Kentucky. This affects approximately 200 customers.

This advisory has been issued due to low water pressure.

Following such an event, the potential exists for bacteriological contamination of the water supply; therefore this boil water advisory has been issued as a precautionary measure. Until further notice, boil all water used for drinking and cooking, bringing the water to a rolling boil for three (3) minutes before using.

This advisory will remain in effect until the situation has been corrected and test results have shown the water to be of an acceptable quality.

MARTIN COUNTY WATER DISTRICT

387 East Main St Suite 140
INEZ, KY 41224

606-298-3885 OFFICE

606-298-4913 FAX

Release of Boil Water Advisory

A Boil Water Advisory issued on March 4, 2015, NC #2390631 for the following area(s) From Long Branch on Rt. 292 to the end of Rt. 292 at the Pike County line: Located in Martin County, Kentucky. The above advisory has been lifted by Mr. Wade Maggard with the Division of Water, Hazard, KY. The advisory notice was received March 16, 2015 3:00 p.m.

Thank You

Marcie Dials
Martin County Water District

MARTIN COUNTY WATER DISTRICT

387 East Main St Suite 140
INEZ, KY 41224

606-298-3885 OFFICE

606-298-4913 FAX

Release of Boil Water Advisory

A Boil Water Advisory issued on March 6, 2015, NC #2390893 for the following area(s): From Buck Creek hill to Beauty, entire Warfield area including Hode, and Rt. 1714 to Little Peter Cave: Located in Martin County, Kentucky. The above advisory has been lifted by Mr. Wade Maggard with the Division of Water, Hazard, KY. The advisory notice was received March 16, 2015 3:00 p.m.

Thank You

Marcie Dials
Martin County Water District

MARTIN COUNTY WATER DISTRICT

387 East Main St Suite 140
INEZ, KY 41224

606-298-3885 OFFICE

606-298-4913 FAX

Release of Boil Water Advisory

A Boil Water Advisory issued on March 7, 2015, NC #2015-1382 for the following area(s): From Frog Pond to the end of Meathouse and from Pigeon Roost to Little Peter Cave: Located in Martin County, Kentucky. The above advisory has been lifted by Mr. Wade Maggard with the Division of Water, Hazard, KY. The advisory notice was received March 16, 2015 3:00 p.m.

Thank You

Marcie Dials
Martin County Water District

MARTIN COUNTY WATER DISTRICT
387 E. Main Street, Suite 140
INEZ, KY 41224

298-4913 FAX

606-298-3885

BOIL WATER ADVISORY

Date Issue: March 30, 2015

Time Issued 1:00 P.M.

N/C #: 2392602

A Boil Water Advisory is in effect for Collins Creek in Warfield, KY:
Located in Martin County Kentucky.

This Advisory has been issued due to a 6 inch line break. This affects
approximately 45 customers.

Following such an event, the potential exists for bacteriological
contamination of the water supply; therefore this boil water advisory has
been issued as a precautionary measure. Until further notice, boil all water
used for drinking and cooking, bringing the water to a rolling boil for three
(3) minutes before using.

This advisory will remain in effect until the situation has been corrected, and
test results have shown the water to be of an acceptable quality.

Issued By: Damon White, Division of Water

Issued By: Marcie Dials, Martin County Water

MARTIN COUNTY WATER DISTRICT

387 East Main St Suite 140
INEZ, KY 41224

606-298-3885 OFFICE

606-298-4913 FAX

Release of Boil Water Advisory

A Boil Water Advisory issued on Monday March 30, 2014, N/C # 2392602 for Collins Creek in Warfield, KY has been released. This area is located in Martin County, KY. This Advisory has been released as of April 1, 2015. Time of release was 1:40 p.m. The above advisory has been lifted by Damon White with the Division of Water, Hazard, KY.

Thank You

Marcie Dials
Martin County Water District
606-298-3885

MARTIN COUNTY WATER DISTRICT
387 E. Main Street, Suite 140
INEZ, KY 41224

298-4913 FAX

606-298-3885

BOIL WATER ADVISORY

Date Issue: April 1, 2015

Time Issued 1:55 P.M.

N/C #: 2392748

A Boil Water Advisory is in effect starting at Davis Branch of Debord and all water customers past Davis Branch on New Rt. 3: Located in Martin County Kentucky.

This Advisory has been issued due to a 6 inch line break. This affects approximately 200 customers.

Following such an event, the potential exists for bacteriological contamination of the water supply; therefore this boil water advisory has been issued as a precautionary measure. Until further notice, boil all water used for drinking and cooking, bringing the water to a rolling boil for three (3) minutes before using.

This advisory will remain in effect until the situation has been corrected, and test results have shown the water to be of an acceptable quality.

Issued By: Damon White, Division of Water

Issued By: Marcie Dials, Martin County Water

MARTIN COUNTY WATER DISTRICT
387 E. Main Street, Suite 140
INEZ, KY 41224
298-4913 FAX 606-298-3885

BOIL WATER ADVISORY

Date Issue: April 13, 2015

Time Issued 8:45 P.M.

N/C #: 2015-2227

A Boil Water Advisory is in effect for City of Inez Residents, Inez, KY. Located in Martin County Kentucky.

This Advisory has been issued due to installing a 6" valve for the new Court House that is being constructed. This affects approximately 80 customers.

Following such an event, the potential exists for bacteriological contamination of the water supply; therefore this boil water advisory has been issued as a precautionary measure. Until further notice, boil all water used for drinking and cooking, bringing the water to a rolling boil for three (3) minutes before using.

This advisory will remain in effect until the situation has been corrected, and test results have shown the water to be of an acceptable quality.

Issued By: Duty Officer Baggette, Division of Water

Issued By: Joe Hammond, Martin County Water

MARTIN COUNTY WATER DISTRICT

387 East Main St Suite 140
INEZ, KY 41224

606-298-3885 OFFICE

606-298-4913 FAX

Release of Boil Water Advisory

A Boil Water Advisory issued on April 13, 2015, N/C # 2015-2227 for City of Inez residents, Inez, KY has been released. This area is located in Martin County, KY. This Advisory has been released as of April 15, 2015. Time of release was 12:30 p.m. The above advisory has been lifted by Damon White with the Division of Water, Hazard, KY.

Thank You

Marcie Dials
Martin County Water District
606-298-3885

MARTIN COUNTY WATER DISTRICT
387 E. Main Street, Suite 140
INEZ, KY 41224

298-4913 FAX

606-298-3885

BOIL WATER ADVISORY

Date Issue: August 4, 2015

Time Issued 8:37 A.M.

N/C #:2399941

A Boil Water Advisory is in effect for the entire Martin County area except for Route 292 from the railroad bridge to the Pike County line: Located in Martin County, Kentucky.

This Advisory has been issued due to low water pressure. This affects approximately 3000 customers.

Following such an event, the potential exists for bacteriological contamination of the water supply; therefore this boil water advisory has been issued as a precautionary measure. Until further notice, boil all water used for drinking and cooking, bringing the water to a rolling boil for three (3) minutes before using.

This advisory will remain in effect until the situation has been corrected, and test results have shown the water to be of an acceptable quality.

Issued By: Damon White, Division of Water

Issued By: Marcie Dials, Martin County Water

MARTIN COUNTY WATER DISTRICT

HC 69 BOX 875
INEZ, KY 41224

606-298-3885 OFFICE

606-298-4913 FAX

Release of Boil Water Advisory

A Boil Water Advisory issued on August 4, 2015, N/C # 2399941 for the following area: Entire Martin County area except for Route 292 from the railroad bridge to the Pike County line.

This Advisory has been released as of August 7, 2015. Time of release was 10:40 a.m. The above advisory has been lifted by Mr. Damon White with the Division of Water, Hazard, KY.

Thank You

Marcie Dials
Martin County Water District
606-298-3885

MARTIN COUNTY WATER DISTRICT

387 E Main St Suite 140
INEZ, KY 41224

606-298-3885 OFFICE

606-298-4913 FAX

Release of Boil Water Advisory

A Boil Water Advisory issued on August 7, 2015, N/C # 2400142 for the following area: from the Elk Creek pump station to the OK Corral on Hode. Location is Martin County, KY.

This Advisory has been released as of August 14th, 2015. Time of release was 3:55 p.m. The above advisory has been lifted by Mr. Lee Piggman with the Division of Water, Hazard, KY.

Thank You

Marcie Dials
Martin County Water District
606-298-3885

MARTIN COUNTY WATER DISTRICT
387 E. Main Street, Suite 140
INEZ, KY 41224

298-4913 FAX

606-298-3885

BOIL WATER ADVISORY

Date Issue: August 14, 2015

Time Issued 6:42 P.M.

N/C #:20154785

A Boil Water Advisory is in effect for the customers from Warfield Park to the OK Corral on Rt. 292 Hode. Location is Martin County, KY. This Advisory has been issued due to a split in a 6" main line. This affects approximately 150 customers.

Following such an event, the potential exists for bacteriological contamination of the water supply; therefore this boil water advisory has been issued as a precautionary measure. Until further notice, boil all water used for drinking and cooking, bringing the water to a rolling boil for three (3) minutes before using.

This advisory will remain in effect until the situation has been corrected, and test results have shown the water to be of an acceptable quality.

Issued By: Mr. Compton, Division of Water

Issued By: Marcie Dials, Martin County Water

MARTIN COUNTY WATER DISTRICT

387 E Main St Sulte 140
INEZ, KY 41224

606-298-3885 OFFICE

606-298-4913 FAX

Release of Boil Water Advisory

A Boil Water Advisory issued on August 14th, 2015, N/C # 20154785 for the following area:
from Warfield Park to OK Corral on Rt. 292 Hode. Location is Martin County, KY.

This Advisory has been released as of August 19th, 2015. Time of release was 3:40 p.m. The
above advisory has been lifted by Angie Terry with the Division of Water, Hazard, KY.

Thank You

Marcie Dials
Martin County Water District
606-298-3885

MARTIN COUNTY WATER DISTRICT
387 E. Main Street, Suite 140
INEZ, KY 41224

298-4913 FAX

606-298-3885

BOIL WATER ADVISORY

Date Issue: October 29, 2015

Time Issued: 2:45 PM

N/C #: 2403171

A boil water advisory is in effect for the customers on New Rt. 3 from the Davella pump station to the county line.

This Advisory has been issued due to the following reason: A main water line break. This advisory affects approximately 150 customers.

Following such an event, the potential exists for bacteriological contamination of the water supply; therefore this boil water advisory has been issued precautionary measure. Until further notice, boil all water used for drinking and cooking, bringing the water to a rolling boil for three (3) minutes before using.

This advisory will remain in effect until the situation has been corrected, and test results have shown the water to be of an acceptable quality.

Issued By: Ashton Johnson, Division of Water
Issued By: Marcie Dials, Office Manager

MARTIN COUNTY WATER DISTRICT
387 E. Main Street, Suite 140
INEZ, KY 41224

298-4913 FAX

606-298-3885

BOIL WATER ADVISORY

Date Issue: September 22, 2015

Time Issued: 6:10 PM

N/C #: 2015-5635

An area wide Boil Water Advisory is in effect for all customers of Martin County Water.

This Advisory has been issued due to the following reason: Repairs to the clarifier at the water plant which may cause low pressure. This advisory affects approximately 3,500 customers.

Following such an event, the potential exists for bacteriological contamination of the water supply; therefore this boil water advisory has been issued precautionary measure. Until further notice, boil all water used for drinking and cooking, bringing the water to a rolling boil for three (3) minutes before using.

This advisory will remain in effect until the situation has been corrected, and test results have shown the water to be of an acceptable quality.

Issued By: Officer Updike, Division of Water
Issued By: Marcie Dials, Office Manager

MARTIN COUNTY WATER DISTRICT

387 E Main St Suite 140
INEZ, KY 41224

606-298-3885 OFFICE

606-298-4913 FAX

Release of Boil Water Advisory

A Boil Water Advisory issued on September 22, 2015, N/C # 2015-5635 for the following area(s), Martin County Water District, System Wide. These areas are located in Martin County, KY. This Advisory has been released as of September 26, 2015. Time of release was 12:30 p.m. The above advisory has been lifted by Mr. Robert Francis with the Division of Water.

Thank You

Marcie Dials
Martin County Water District

MARTIN COUNTY WATER DISTRICT

387 E Main St Suite 140
INEZ, KY 41224

606-298-3885 OFFICE

606-298-4913 FAX

Release of Boil Water Advisory

A Boil Water Advisory issued on October 29, 2015, N/C # 2403171 for the following area;
Davella pump station on New Rt. 3 to the county line. This area is located in Martin County, KY.

This Advisory has been released as of November 4, 2015. Time of release was 8:30 a.m. The
above advisory has been lifted by Mr. Lonnie Klopp with the Division of Water.

Thank You

Marcie Dials
Martin County Water District

MARTIN COUNTY WATER DISTRICT
387 E. Main Street, Suite 140
INEZ, KY 41224

298-4913 FAX

606-298-3885

BOIL WATER ADVISORY

Date Issue: November 12, 2015
Time Issued 3:09 PM

N/C #: 2403637

A Boil Water Advisory is in effect for the customers of: North on Old Rt 3, beginning at Johnson Bottom and continuing to Buffalo Horn Pump Station on route 292 South.

This Advisory has been issued due to the following reason:
Maintenance of a 6" main line leak at Old Grassy School. This will affect approximately 100 customers.

Following such an event, the potential exists for bacteriological contamination of the water supply; therefore this boil water advisory has been issued as a precautionary measure. Until further notice, boil all water used for drinking and cooking, bringing the water to a rolling boil for three (3) minutes before using.

This advisory will remain in effect until the situation has been corrected, and test results have shown the water to be of an acceptable quality.

Issued By: Robert Beck, Division of Water

Issued By: Joe Hammond, Martin County Water

MARTIN COUNTY WATER DISTRICT

387 E Main St Suite 140
INEZ, KY 41224

606-298-3885 OFFICE

606-298-4913 FAX

Release of Boil Water Advisory

A Boil Water Advisory issued on November 12, 2015, N/C # 2403637 for the following area; North on Old Rt. 3, beginning at Johnson Bottom and continuing to Buffalo Horn pump station on Rt. 292 South. This area is located in Martin County, KY. This Advisory has been released as of November 18, 2015. Time of release was 1:25 p.m. The above advisory has been lifted by Mr. Damon White with the Division of Water.

Thank You

Marcie Dials
Martin County Water District

MARTIN COUNTY WATER DISTRICT
387 E. Main Street, Suite 140
INEZ, KY 41224

298-4913 FAX

606-298-3885

BOIL WATER ADVISORY

Date Issue: December 21, 2015
Time Issued 8:55 PM

N/C #: 2015-7415

A Boil Water Advisory is in effect for the customers of: City of Inez; from Old Rt. 3 South to Otto Brown pump station; from Inez to Rt. 40 East to Rt. 40 East pump station; from Inez to Rt. 3 North to Fannin Bridge; from Inez to top of Turkey Hill on Rt. 908.

This Advisory has been issued due to the following reason: A main line leak at Hardinville Rd. This will affect approximately 300 customers.

Following such an event, the potential exists for bacteriological contamination of the water supply; therefore this boil water advisory has been issued as a precautionary measure. Until further notice, boil all water used for drinking and cooking, bringing the water to a rolling boil for three (3) minutes before using.

This advisory will remain in effect until the situation has been corrected, and test results have shown the water to be of an acceptable quality.

Issued By: Officer Baggett, Division of Water

Issued By: Marcie Dials, Martin County Water

MARTIN COUNTY WATER DISTRICT

387 E Main St Suite 140
INEZ, KY 41224

606-298-3885 OFFICE

606-298-4913 FAX

Release of Boil Water Advisory

A Boil Water Advisory issued on December 21, 2015, N/C # 2015-7415 for the following area; City of Inez; from Old Rt. 3 South to Otto Brown pump station; from Inez to Rt. 40 East to Rt. 40 East Pump Station; from Inez to Rt. 3 North to Fannin Bridge; from Inez to top of Turkey Hill on Rt. 908. This Advisory has been released as of December 23, 2015. Time of release was 9:55 a.m. The above advisory has been lifted by Mr. Robert Beck with the Division of Water.

Thank You

Marcie Dials
Martin County Water District

MARTIN COUNTY WATER DISTRICT
387 E. Main Street, Suite 140
INEZ, KY 41224

298-4913 FAX

606-298-3885

BOIL WATER ADVISORY

Date Issue: January 3, 2016
Time Issued 11:55 AM

N/C #: 2016-0034

A Boil Water Advisory is in effect for the customers of: Rt. 908 Turkey from Union Rd to Big Elk; also including Calf Creek.

This Advisory has been issued due to the following reason: A main line break at Turkey. This will affect approximately 200 customers.

Following such an event, the potential exists for bacteriological contamination of the water supply; therefore this boil water advisory has been issued as a precautionary measure. Until further notice, boil all water used for drinking and cooking, bringing the water to a rolling boil for three (3) minutes before using.

This advisory will remain in effect until the situation has been corrected, and test results have shown the water to be of an acceptable quality.

Issued By: Officer Compton, Division of Water

Issued By: Marcie Dials, Martin County Water

MARTIN COUNTY WATER DISTRICT

387 E Main St Suite 140
INEZ, KY 41224

606-298-3885 OFFICE

606-298-4913 FAX

Release of Boil Water Advisory

A Boil Water Advisory issued on January 3, 2016, N/C # 2016-0034 for the following area; Rt 908 Turkey from Union Rd to Big Elk; also including Calf Creek. This Advisory has been released as of January 5, 2016. Time of release was 11:00 a.m. The above advisory has been lifted by Mr. Damon White with the Division of Water.

Thank You

Joe Hammond
Martin County Water District

MARTIN COUNTY WATER DISTRICT
387 E. Main Street, Suite 140
INEZ, KY 41224

298-4913 FAX

606-298-3885

BOIL WATER ADVISORY

Date Issue: January 29, 2016
Time Issued 8:55 AM

N/C #: 2406983

A Boil Water Advisory is in effect for the customers of: Rt. 908 Turkey from the old Turkey school to the OK Corral; also including Calf Creek.

This Advisory has been issued due to the following reason: A main line break at Turkey. This will affect approximately 75 customers.

Following such an event, the potential exists for bacteriological contamination of the water supply; therefore this boil water advisory has been issued as a precautionary measure. Until further notice, boil all water used for drinking and cooking, bringing the water to a rolling boil for three (3) minutes before using.

This advisory will remain in effect until the situation has been corrected, and test results have shown the water to be of an acceptable quality.

Issued By: Damon White, Division of Water

Issued By: Marcie Dials, Martin County Water

MARTIN COUNTY WATER DISTRICT

387 E Main St Sulte 140
INEZ, KY 41224

606-298-3885 OFFICE

606-298-4913 FAX

Release of Boil Water Advisory

A Boil Water Advisory issued on January 29, 2016, N/C # 2406983 has been released for the customers of Rt. 908 Turkey from the old Turkey school to the OK Corral; also including Calf Creek. This Advisory has been released as of February 2, 2016. Time of release was 3:00 p.m. The above advisory has been lifted by Mr. Damon White with the Division of Water.

Thank You

Marcie Dials
Martin County Water District

MARTIN COUNTY WATER DISTRICT
387 E. Main Street, Suite 140
INEZ, KY 41224

298-4913 FAX

606-298-3885

BOIL WATER ADVISORY

Date Issue: February 16, 2016
Time Issued 9:44 AM

N/C #: 2407729

A Boil Water Advisory is in effect for the customers of: Tomahawk, including Rockhouse, and Old Rt. 3, including Milo.

This Advisory has been issued due to the following reason: A main line break on Inez hill. This will affect approximately 800 customers.

Following such an event, the potential exists for bacteriological contamination of the water supply; therefore this boil water advisory has been issued as a precautionary measure. Until further notice, boil all water used for drinking and cooking, bringing the water to a rolling boil for three (3) minutes before using.

This advisory will remain in effect until the situation has been corrected, and test results have shown the water to be of an acceptable quality.

Issued By: Ashton Johnson, Division of Water

Issued By: Marcie Dials, Martin County Water

MARTIN COUNTY WATER DISTRICT

387 E Main St Suite 140
INEZ, KY 41224

606-298-3885 OFFICE

606-298-4913 FAX

Release of Boil Water Advisory

A Boil Water Advisory issued on February 16, 2016, N/C #2407729 has been released for the customers of Tomahawk, including Rockhouse and Old Rt. 3, including Milo. This Advisory has been released as of February 18, 2016. Time of release was 4:10 p.m. The above advisory has been lifted by Mr. Damon White with the Division of Water.

Thank You

Marcie Dials
Martin County Water District

MARTIN COUNTY WATER DISTRICT
387 E. Main Street, Suite 140
INEZ, KY 41224

298-4913 FAX

606-298-3885

BOIL WATER ADVISORY

Date Issue: February 17, 2016
Time Issued 2:16 P.M.

N/C #: 2407841

A Boil Water Advisory is in effect for the customers of: 2032, which includes Meathouse, Pigeon Roost, and Emily Creek; Also Beauty, Hode, and Wolf Creek, including Big Branch.

This Advisory has been issued due to the following reason: Turning off valves to maintain tank levels due to weather conditions. This will affect approximately 650 customers.

Following such an event, the potential exists for bacteriological contamination of the water supply; therefore this boil water advisory has been issued as a precautionary measure. Until further notice, boil all water used for drinking and cooking, bringing the water to a rolling boil for three (3) minutes before using.

This advisory will remain in effect until the situation has been corrected, and test results have shown the water to be of an acceptable quality.

Issued By: Josh George, Division of Water

Issued By: Marcie Dials, Martin County Water

MARTIN COUNTY WATER DISTRICT

387 E Main St Suite 140
INEZ, KY 41224

606-298-3885 OFFICE

606-298-4913 FAX

Release of Boil Water Advisory

A Boil Water Advisory issued on February 17, 2016, N/C # 2407841 has been released for the customers of 2032, Meathouse, Pigeon Roost, Emily Creek, Beauty, Warfield, Hode, Wolf Creek, and Big Branch. This Advisory has been released as of February 24, 2016. Time of release was 8:33 a.m. The above advisory has been lifted by Mr. Damon White with the Division of Water.

Thank You

Marcie Dials
Martin County Water District

MARTIN COUNTY WATER DISTRICT
387 E. Main Street, Suite 140
INEZ, KY 41224

298-4913 FAX

606-298-3885

BOIL WATER ADVISORY

Date Issue: March 2, 2016
Time Issued 11:16 A.M.

N/C #: 2408532

A Boil Water Advisory is in effect for the customers of: Rt. 1884 Milo, and continuing onto Old Rt. 3 from the Milo bridge to Buffalo Horn.

This Advisory has been issued due to the following reason: Turning off water to repair a leak. This affects approximately 100 customers.

Following such an event, the potential exists for bacteriological contamination of the water supply; therefore this boil water advisory has been issued as a precautionary measure. Until further notice, boil all water used for drinking and cooking, bringing the water to a rolling boil for three (3) minutes before using.

This advisory will remain in effect until the situation has been corrected, and test results have shown the water to be of an acceptable quality.

Issued By: Ashton Johnson, Division of Water

Issued By: Marcie Dials, Martin County Water

MARTIN COUNTY WATER DISTRICT

387 E Main St Suite 140
INEZ, KY 41224

606-298-3885 OFFICE

606-298-4913 FAX

Release of Boil Water Advisory

A Boil Water Advisory issued on March 2, 2016, N/C # 2408532 has been released for the customers of: Rt. 1884 Milo, and continuing onto Old Rt. 3 from the Milo bridge to Buffalo Horn. This Advisory has been released as of March 7, 2016. Time of release was 10:21 a.m. The above advisory has been lifted by Mr. Damon White with the Division of Water.

Thank You

Marcie Dials
Martin County Water District

MARTIN COUNTY WATER DISTRICT
387 E. Main Street, Suite 140
INEZ, KY 41224

298-4913 FAX

606-298-3885

BOIL WATER ADVISORY

Date Issue: March 4, 2016
Time Issued 3:40 p.m.

N/C #: 2408640

A Boil Water Advisory is in effect (when water service is restored) for the customers of Little Rockcastle, including Frog Pond, Pigeon Roost, and Meathouse.

This Advisory has been issued due to the following reason: Turning off water to repair a leak. This affects approximately 350 customers.

Following such an event, the potential exists for bacteriological contamination of the water supply; therefore this boil water advisory has been issued as a precautionary measure. Until further notice, boil all water used for drinking and cooking, bringing the water to a rolling boil for three (3) minutes before using.

This advisory will remain in effect until the situation has been corrected, and test results have shown the water to be of an acceptable quality.

Issued By: Damon White, Division of Water

Issued By: Marcie Dials, Martin County Water

MARTIN COUNTY WATER DISTRICT

387 E Main St Suite 140
INEZ, KY 41224

606-298-3885 OFFICE

606-298-4913 FAX

Release of Boil Water Advisory

A Boil Water Advisory issued on March 4, 2016, N/C # 2408640 has been released for the customers of Little Rockcastle, including Frog Pond, Pigeon Roost, and Meathouse. This Advisory has been released as of March 11, 2016. Time of release was 3:30 p.m. The above advisory has been lifted by Mr. Damon White with the Division of Water.

Thank You

Marcie Dials
Martin County Water District

MARTIN COUNTY WATER DISTRICT
387 E. Main Street, Suite 140
INEZ, KY 41224

298-4913 FAX

606-298-3885

BOIL WATER ADVISORY

Date Issue: March 31, 2016

Time Issued 3:30 P.M.

N/C #: 2409803

A Boil Water Advisory is in effect for the customers of Saltwell Road, Inez KY. Located in Martin County Kentucky.

This Advisory has been issued due to a contractor hitting the main 4" water line that feeds the customer on Saltwell Road. This line has been repaired.

Following such an event, the potential exists for bacteriological contamination of the water supply; therefore this boil water advisory has been issued as a precautionary measure. Until further notice, boil all water used for drinking and cooking, bringing the water to a rolling boil for three (3) minutes before using.

This advisory will remain in effect until the situation has been corrected, and test results have shown the water to be of an acceptable quality.

Issued By: Aston Johnson, Division of Water

Issued By: Joe Hammond, Martin County Water

MARTIN COUNTY WATER DISTRICT

387 E Main St Sulte 140
INEZ, KY 41224

606-298-3885 OFFICE

606-298-4913 FAX

Release of Boil Water Advisory

A Boil Water Advisory issued on March 31, 2016, N/C # 2409803 has been released for the customers of Saltwell Road, Inez, KY. This Advisory has been released as of April 6, 2016. Time of release was 1:00 p.m. The above advisory has been lifted by Mr. Damon White with the Division of Water.

Thank You

Marcie Dials
Martin County Water District

MARTIN COUNTY WATER DISTRICT
387 E. Main Street, Suite 140
INEZ, KY 41224

298-4913 FAX

606-298-3885

BOIL WATER ADVISORY

Date Issue: April 14, 2016

Time Issued 11:15 A.M.

N/C #: 2410268

A Boil Water Advisory is in effect for the customers of Little Peter Cave in Wolf Creek. Located in Martin County Kentucky.

This Advisory has been issued due to turning water off to install valves.

Following such an event, the potential exists for bacteriological contamination of the water supply; therefore this boil water advisory has been issued as a precautionary measure. Until further notice, boil all water used for drinking and cooking, bringing the water to a rolling boil for three (3) minutes before using.

This advisory will remain in effect until the situation has been corrected, and test results have shown the water to be of an acceptable quality.

Issued By: Damon White, Division of Water

Issued By: Marcie Dials, Martin County Water

MARTIN COUNTY WATER DISTRICT

387 E Main St Suite 140
INEZ, KY 41224

606-298-3885 OFFICE

606-298-4913 FAX

Release of Boil Water Advisory

A Boil Water Advisory issued on April 14, 2016, N/C # 2410268 has been released for the customers of Little Peter Cave in Wolf Creek area in Martin County, Kentucky. This Advisory has been released as of April 16, 2016. Time of release was 10:20 a.m. The above advisory has been lifted the by Division of Water.

Thank You

Joe Hammond

Martin County Water District

MARTIN COUNTY WATER DISTRICT
387 E. Main Street, Suite 140
INEZ, KY 41224

298-4913 FAX

606-298-3885

BOIL WATER ADVISORY

Date Issue: April 29, 2016

Time Issued 12:30 P.M.

N/C #: 2410857

A Boil Water Advisory is in effect for all customers of New Route 3, from the Route 3 & 645 intersection to the Honey Branch Industrial Park. Located in Martin County Kentucky.

This Advisory has been issued due to repair of a 6" main line leak.

Following such an event, the potential exists for bacteriological contamination of the water supply; therefore this boil water advisory has been issued as a precautionary measure. Until further notice, boil all water used for drinking and cooking, bringing the water to a rolling boil for three (3) minutes before using.

This advisory will remain in effect until the situation has been corrected, and test results have shown the water to be of an acceptable quality.

Issued By: Angie Terry, Division of Water

Issued By: Marcie Dials, Martin County Water

MARTIN COUNTY WATER DISTRICT
387 E. Main Street, Suite 140
INEZ, KY 41224

298-4913 FAX

606-298-3885

BOIL WATER ADVISORY

Date Issue: May 1, 2016

Time Issued 2:30 P.M.

N/C #: 2016-2206

A Boil Water Advisory is in effect for customers of Wolf Creek, from Frog Pond to Gauze Hollow, including Pigeon Roost and Meathouse. Located in Martin County, Kentucky.

This Advisory has been issued due to repair of a 6'' main line leak.

Following such an event, the potential exists for bacteriological contamination of the water supply; therefore this boil water advisory has been issued as a precautionary measure. Until further notice, boil all water used for drinking and cooking, bringing the water to a rolling boil for three (3) minutes before using.

This advisory will remain in effect until the situation has been corrected, and test results have shown the water to be of an acceptable quality.

Issued By: Officer Compton, Division of Water

Issued By: Marcie Dials, Martin County Water

MARTIN COUNTY WATER DISTRICT

387 E Main St Suite 140
INEZ, KY 41224

606-298-3885 OFFICE

606-298-4913 FAX

Release of Boil Water Advisory

A Boil Water Advisory issued on May 1st, 2016, N/C # 2016-2206 has been released for the customers of Wolf Creek, from Frog Pond to Gauze Hollow, including Pigeon Roost and Meathouse in Martin County, KY. This Advisory has been released as of May 3rd, 2016. Time of release was 2:00 p.m. The above advisory has been lifted by Mr. Damon White with the Division of Water.

Thank You

Marcie Dials
Martin County Water District

MARTIN COUNTY WATER DISTRICT
387 E. Main Street, Suite 140
INEZ, KY 41224

298-4913 FAX

606-298-3885

BOIL WATER ADVISORY

Date Issue: May 1, 2016

Time Issued 5:20 P.M.

N/C #: 2016-2207

A Boil Water Advisory is in effect for customers of Elk Creek from the Gospel Light church to the OK Corral, also including Poplar Fork; located in Martin County, Kentucky.

This Advisory has been issued due to low pressure and line leaks.

Following such an event, the potential exists for bacteriological contamination of the water supply; therefore this boil water advisory has been issued as a precautionary measure. Until further notice, boil all water used for drinking and cooking, bringing the water to a rolling boil for three (3) minutes before using.

This advisory will remain in effect until the situation has been corrected, and test results have shown the water to be of an acceptable quality.

Issued By: Officer Compton, Division of Water

Issued By: Marcie Dials, Martin County Water

MARTIN COUNTY WATER DISTRICT
387 E. Main Street, Suite 140
INEZ, KY 41224

298-4913 FAX

606-298-3885

BOIL WATER ADVISORY

Date Issue: May 4, 2016

Time Issued 12:05 P.M.

N/C #: 2411046

A Boil Water Advisory is in effect for all customers of Martin County Water; Located in Martin County, Kentucky.

This Advisory has been issued due to cleaning filters at the water plant.

Following such an event, the potential exists for bacteriological contamination of the water supply; therefore this boil water advisory has been issued as a precautionary measure. Until further notice, boil all water used for drinking and cooking, bringing the water to a rolling boil for three (3) minutes before using.

This advisory will remain in effect until the situation has been corrected, and test results have shown the water to be of an acceptable quality.

Issued By: Damon White, Division of Water

Issued By: Marcie Dials, Martin County Water

MARTIN COUNTY WATER DISTRICT

387 E Main St Suite 140
INEZ, KY 41224

606-298-3885 OFFICE

606-298-4913 FAX

Release of Boil Water Advisory

A Boil Water Advisory issued on May 4th, 2016, N/C # 2411046, has been released for ALL customers in Martin County, KY. This Advisory has been released as of May 6th, 2016. Time of release was 12:05 p.m. The above advisory has been lifted by Mr. Lee Pigman with the Division of Water.

Thank You

Marcie Dials
Martin County Water District

MARTIN COUNTY WATER DISTRICT
387 E. Main Street, Suite 140
INEZ, KY 41224

298-4913 FAX

606-298-3885

BOIL WATER ADVISORY

Date Issue: June 13, 2016
Time Issued P.M.

N/C #: 2412665

A Boil Water Advisory is in effect for the customers of: Rt. 1884 Milo, and continuing onto Old Rt. 3 from the Milo bridge to Buffalo Horn Pump Station and South toward Inez, KY on Route 3 to Town Curve .

This Advisory has been issued due to repairing a leak on a 6" main line. This affects approximately 200 customers.

Following such an event, the potential exists for bacteriological contamination of the water supply; therefore this boil water advisory has been issued as a precautionary measure. Until further notice, boil all water used for drinking and cooking, bringing the water to a rolling boil for three (3) minutes before using.

This advisory will remain in effect until the situation has been corrected, and test results have shown the water to be of an acceptable quality.

Issued By: Robert Back, Division of Water

Issued By: Joe Hammond, Martin County Water

MARTIN COUNTY WATER DISTRICT

387 E Main St, Suite 140
INEZ, KY 41224

606-298-3885 OFFICE
4913 FAX

606-298-

Release of Boil Water Advisory

A Boil Water Advisory issued on June 13, 2016, N/C # 2412665 for the following area(s). Rt. 1884 Milo, and continuing onto Old Rt. 3 from Milo bridge to Buffalo Horn Pump Station and South toward Inez, KY on Rt. 3 to Town Curve. These areas are located in Martin County, KY. This Advisory has been released as of June 22, time of release was 9:20 am. The above advisory has been lifted by Mr. Damon White with the Division of Water, Hazard, Ky. The advisory notice was received at 9:00 am, on June 22, 2016.

Thank You

Katrina Sansom
Martin County Water District
606-298-3885

MARTIN COUNTY WATER DISTRICT
387 E. Main Street, Suite 140
INEZ, KY 41224

298-4913 FAX

606-298-3885

BOIL WATER ADVISORY

Date Issue: June 14, 2016
Time Issued 1:30 P.M.

N/C #: 2412702

A Boil Water Advisory is in effect for the customers of: Union Road on Rt. 908 Turkey.

This Advisory has been issued due to replacing old lines.

Following such an event, the potential exists for bacteriological contamination of the water supply; therefore this boil water advisory has been issued as a precautionary measure. Until further notice, boil all water used for drinking and cooking, bringing the water to a rolling boil for three (3) minutes before using.

This advisory will remain in effect until the situation has been corrected, and test results have shown the water to be of an acceptable quality.

Issued By: Wade Maggard, Division of Water

Issued By: Marcie Dials, Martin County Water

MARTIN COUNTY WATER DISTRICT

387 E Main St, Suite 140
INEZ, KY 41224

606-298-3885 OFFICE
4913 FAX

606-298-

Release of Boil Water Advisory

A Boil Water Advisory issued on June 14, 2016, N/C # 2412702 for the following area(s), Union Road on Turkey. This area is located in Martin County, KY. This Advisory has been released as of June 22, time of release was 10:50 am. The above advisory has been lifted by Mr. Damon White with the Division of Water, Hazard, Ky. The advisory notice was received at 10:00 am, on June 22, 2016.

Thank You

Katrina Sansom
Martin County Water District
606-298-3885

MARTIN COUNTY WATER DISTRICT
387 E. Main Street, Suite 140
INEZ, KY 41224

298-4913 FAX

606-298-3885

BOIL WATER ADVISORY

Date Issue: June 23, 2016
Time Issued 9:00 A.M.

N/C #: 2413037

A Boil Water Advisory is in effect for the customers of: Beginning at Warfield Family Dollar, Collins Crk ending at Trinity Church.

This Advisory has been issued due to DOT relocating 8" main line. This affects approximately 100 customers.

Following such an event, the potential exists for bacteriological contamination of the water supply; therefore this boil water advisory has been issued as a precautionary measure. Until further notice, boil all water used for drinking and cooking, bringing the water to a rolling boil for three (3) minutes before using.

This advisory will remain in effect until the situation has been corrected, and test results have shown the water to be of an acceptable quality.

Issued By: Lonnie Klopp, Division of Water

Issued By: Joe Hammond, Martin County Water

MARTIN COUNTY WATER DISTRICT

387 E Main St, Suite 140
INEZ, KY 41224

606-298-3885 OFFICE

606-298-4913 FAX

Release of Boil Water Advisory

June 25, 2016

A Boil Water Advisory issued on June 23, 2016, N/C # 2413037 for the following area(s). Beginning at Warfield Family Dollar, Collins Crk and ending at Trinity Church. These areas are located in Martin County, KY. This Advisory has been released as of June 25, 2016, time of release was 12:07 pm. The above advisory has been lifted by David Leo Duty Officer with the Division of Water, Frankfort, KY. The advisory notice was received at 12:00 pm, on June 25, 2016.

Thank You

Joe Hammond
Martin County Water District
606-298-3885

MARTIN COUNTY WATER DISTRICT
387 E. Main Street, Suite 140
INEZ, KY 41224

298-4913 FAX

606-298-3885

BOIL WATER ADVISORY

Date Issue: July 21, 2016
Time Issued 2:30 P.M.

N/C #: 2414329

A Boil Water Advisory is in effect (when service is restored) for the customers of: Route 908 Turkey from the foot of Turkey hill and continuing to the end of Calf Creek.

This Advisory has been issued due to water being off due to a possible leak.

Following such an event, the potential exists for bacteriological contamination of the water supply; therefore this boil water advisory has been issued as a precautionary measure. Until further notice, boil all water used for drinking and cooking, bringing the water to a rolling boil for three (3) minutes before using.

This advisory will remain in effect until the situation has been corrected, and test results have shown the water to be of an acceptable quality.

Issued By: Damon White, Division of Water

Issued By: Marcie Dials, Martin County Water

MARTIN COUNTY WATER DISTRICT

387 E Main St, Suite 140
INEZ, KY 41224

606-298-3885 OFFICE

606-298-4913 FAX

Release of Boil Water Advisory

July 21, 2016

A Boil Water Advisory issued on July 21, 2016, N/C # 2414329 for the following area(s).
Beginning on Route 908 at the foot of Turkey Hill and extending to the end of Calf Creek. These areas are located in Martin County, KY. This Advisory has been released as of July 23, 2016, time of release was 11:30 am. The above advisory has been lifted by David Leo Duty Officer with the Division of Water, Frankfort, KY. The advisory notice was received at 12:00 pm, on July 23, 2016.

Thank You

Joe Hammond
Martin County Water District
606-298-3885

Exhibit #9
Open Records Request



BRIAN CUMBO
ATTORNEY AT LAW

86 W. Main St., Suite 100
P.O. Box 1844
Inez, KY 41224
(606) 298-0428
FAX: (606) 298-0316
cumbolaw@cumbolaw.com

ADMITTED IN KY AND WV

August 4, 2016

Peter Goodman, Director
DEP Division of Water
200 Fair Oaks Lane, Fourth Floor
Frankfort, KY 40621

RE: Martin County Water District

Dear Director Goodman:

Under the **Kentucky Open Records Act § 61.872 et seq.**, I am requesting an opportunity to inspect or obtain copies of public records that are in your agency's possession regarding the Martin County Water District. Please provide a copy of all communications for the period of July 1, 2013 to the present between Martin County Water District and Kentucky Division of Water, including its regional offices.

If there are any fees for searching or copying these records, please inform me if the cost will exceed \$100.00. This information is not being sought for commercial purposes.

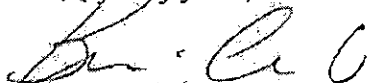
The Kentucky Open Records Act requires a response time within three business days. If access to the records I am requesting will take longer than that time period, please contact me with information about when I might expect copies or the ability to inspect the requested records.

If you deny any or all of this request, please cite each specific exemption you feel justifies the refusal to release the information and notify me of the appeal procedures available to me under the law.

DEP Division of Water
August 4, 2016
Page Two

Thank you for considering my request.

Very truly yours,

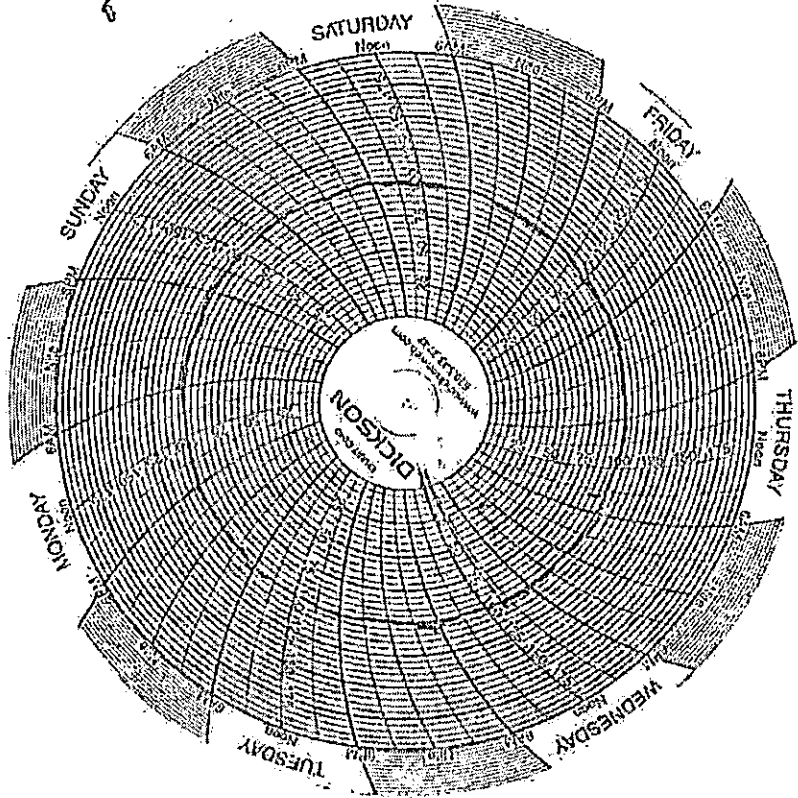


BRIAN CUMBO

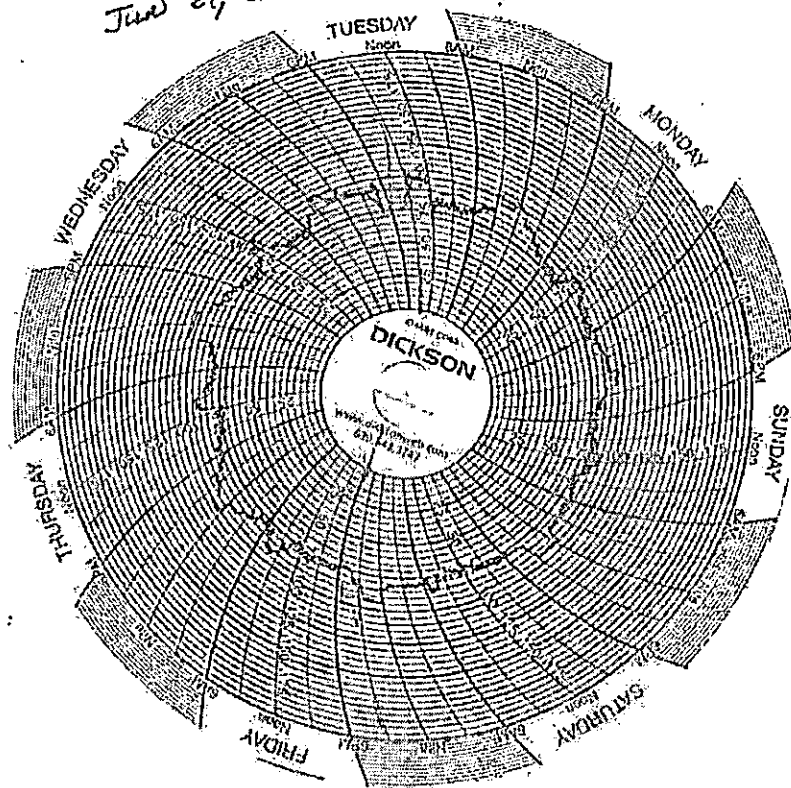
BC/ld

Exhibit #10
Pressure Charts

2352 Tomahawk Rd
Tomahawk, Ky
IN - 7-13-16
out - 7-20-16

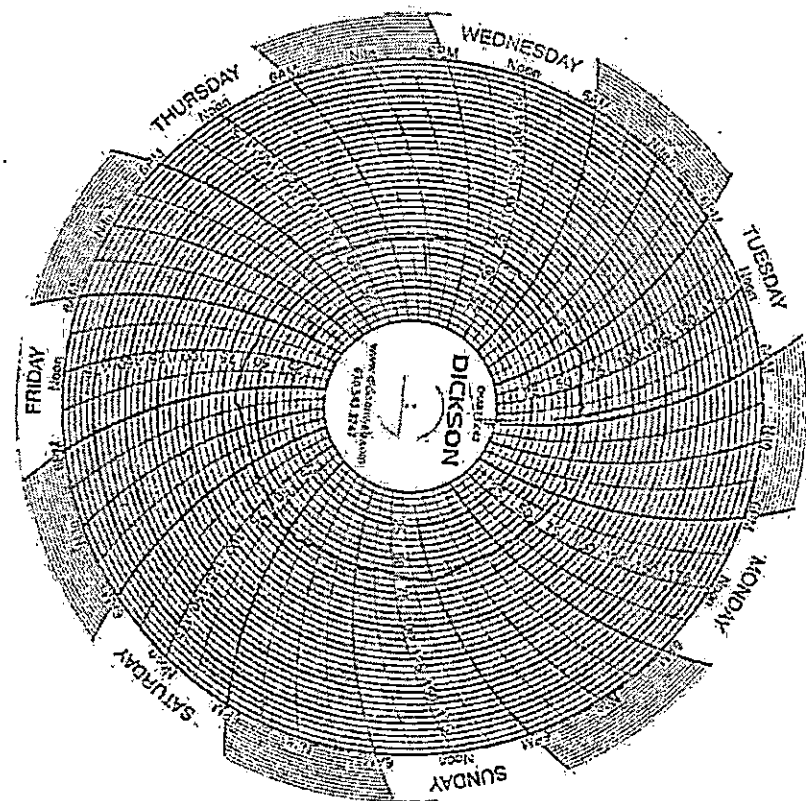


VACANT
6469 Rockcastle Rd
Inez, KY
Jun 14, 2016 - placed
Jun 21, 2016 - Picked-up



Vacant
6469 Rockcastle Rd
Inez, KY
Jun 14, 2016 - placed
Jun 21, 2016 - Picked-up

Ronald Blankenship
IN 5-24-16
out- 5-31-16
Caldwater



Rt 292
Rowdy Kaiser
April 20, 2016, 11:30 AM
TO
May 3, 2016, 11:30 AM

EMAIL -
5-6-16

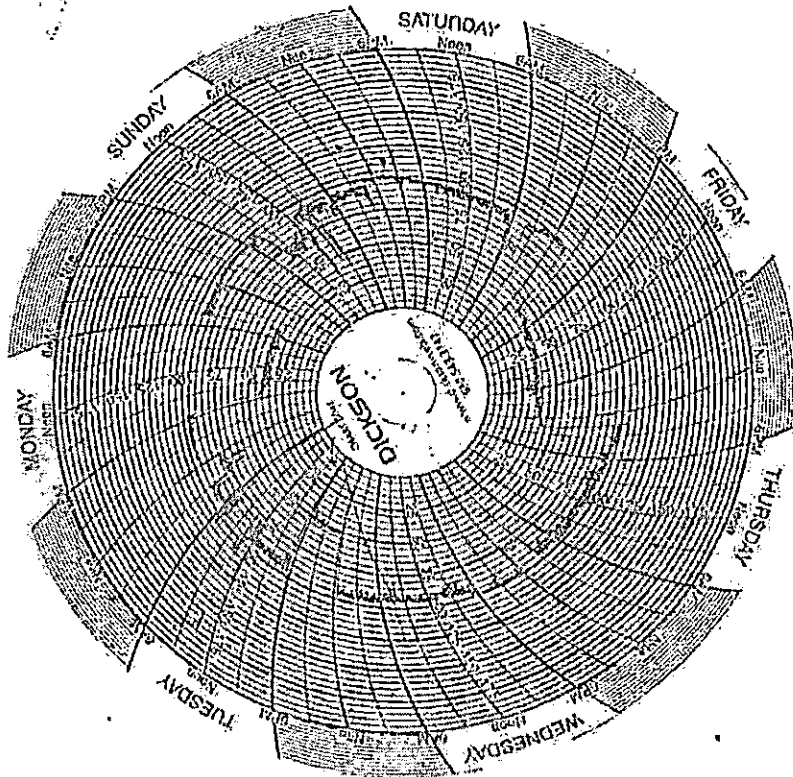


Exhibit #11
Fire Depart Form

Fire Department - Water Usage Report Form

KRS 270.170(3) 807 KAR 5:005 Section 9

Any city, county, urban-county, charter county, fire protection district, or volunteer fire protection district ("User") may withdraw water from the utility's water distribution system for the purpose of fighting fires or training firefighters at no charge on the condition that it maintains estimates of the amount of water used for fire protection and training during the calendar month and reports the amount of this water usage to the utility no later than the 15th day of the following calendar month.

Any city, county, urban-county, charter county, fire protection district, or volunteer fire protection district that withdraws water from the utility's water distribution system for fire protection or training purposes and fails to submit the required report on water usage in a timely manner shall be assessed the cost of this water.

A user reporting usage shall be presumed to be 0.3 percent of the utility's total water sales for the calendar month.

							Month			
(name of Fire Department)							Year			
(name of Water System)							unit conversion factor		29.83	
							coefficient value		0.95	
Date	Hydrant Location and/or Number	Reason Operated	Total Minutes Operated	Nozzle size (typically 2.5 or 4.5)	Pitot Pressure		GPM	Gallons Flowed	Estimated Flow if Pitot not used	
						0.0000				
						0.0000				
						0.0000				
						0.0000				
						0.0000				
						0.0000				
						0.0000				
						0.0000				
						0.0000				
						0.0000				
						0.0000				
						0.0000				
						0.0000				
						0.0000				
						0.0000				
						0.0000				
						0.0000				
						0.0000				
						0.0000				
						0.0000				
						0.0000				
						0.0000				
						0.0000				
						0.0000				
						0.0000				
						0.0000				
						0.0000				
						0.0000				
						0.0000				
						0.0000				
						0.0000				
© 2014	Kentucky Rural Water Association						0.0000			
						0.0000				
						0.0000				
Total Gallons for Month								0		

Fire Department - Water Usage Report Form

KRS 219.170(3) | 007 KAR 5:085 Section 8

Any city, county, urban-county, charter county, fire protection district, or volunteer fire protection district ("User") may withdraw water from the utility's water distribution system for the purpose of fighting fires or training firefighters at no charge on the condition that it maintains estimates of the amount of water used for fire protection and training during the calendar month and reports the amount of this water usage to the utility no later than the 15th day of the following calendar month.

Any city, county, urban-county, charter county, fire protection district, or volunteer fire protection district that withdraws water from the utility's water distribution system for fire protection or training purposes and fails to submit the required report on water usage in a timely manner shall be assessed the cost of this water.

A non-reporting user's usage shall be presumed to be 0.3 percent of the utility's total water sales for the calendar month.


_____ (name of Fire Department)							Month _____ Year _____		
_____ (name of Water System)							unit conversion factor coefficient value		
							29.83		
							0.95		
Date	Hydrant Location and/or Number	Reason Operated	Total Minutes Operated	Nozzle size (typically 2.5 or 4.5)	Pitot Pressure		GPM	Gallons Flowed	Estimated Flow If Pitot not used
							0.0000		
							0.0000		
							0.0000		
							0.0000		
							0.0000		
							0.0000		
							0.0000		
							0.0000		
							0.0000		
							0.0000		
							0.0000		
							0.0000		
							0.0000		
							0.0000		
							0.0000		
							0.0000		
							0.0000		
							0.0000		
							0.0000		
							0.0000		
							0.0000		
							0.0000		
							0.0000		
							0.0000		
							0.0000		
							0.0000		
							0.0000		
							0.0000		
							0.0000		
							0.0000		
							0.0000		
							0.0000		
							0.0000		
							0.0000		
							0.0000		
							0.0000		
							0.0000		
							0.0000		
							0.0000		
							0.0000		
© 2014  Kentucky Rural Water Association							0.0000		
							0.0000		
							0.0000		
							0.0000		
Total Gallons for Month								0	

Exhibit #12
Honey Branch Tank

COPY

JOINT OPERATION AGREEMENT

THIS JOINT OPERATION AGREEMENT (the "Agreement") is entered into and made effective as of the day of July 3, 2000, by and between the Martin County Water District (hereinafter "District") and Prestonsburg City's Utilities Commission (hereinafter "PCUC") and relates to and further delineates the participation of the District and PCUC (hereinafter referred to collectively as "Parties" or individually as each "Party") in the previously executed Understanding entitled "Interlocal Cooperation Understanding For The Development of Utility Infrastructure" (hereinafter referred to as "Interlocal Cooperation Understanding"), attached hereto as Attachment A.

WHEREAS, the District and PCUC are each currently working to develop the necessary water transmission lines, pumping stations, tanks, and related appurtenances to jointly provide water service to the Big Sandy Federal Prison ("Federal Prison") being constructed by the Federal Bureau of Prisons ("Bureau") at the Honey Branch Park ("Industrial Park") in Martin County; and,

WHEREAS, the District and PCUC have mutually agreed and have committed in the Interlocal Cooperation Understanding cited above, that "... each will share the provision of the monthly water consumption demand of the Bureau's facility equally, understanding that circumstances may require that either Party may be called upon by the other Party, from time to time, to supply a greater volume of this consumption demand than 50% and either Party may do so without prejudice or jeopardy to this Agreement . . ."; and,

COPY

WHEREAS, each party to this AGREEMENT deems it in their respective interests to further delineate and thereby clarify the physical layout of the water infrastructure components as well as to delineate and clarify the actual working relationship between the parties once the facilities subject to this Agreement are in operation;

NOW THEREFORE, contingent upon receipt of all required approvals for the location, construction and development of the Federal Prison in the Industrial Park, and contingent upon each party to this Agreement having received approval of all related infrastructure funding from federal agencies, as well as state and local agencies, and contingent upon execution of a binding water purchase agreement between PCUC and the Bureau, it is mutually agreed between the District and PCUC as follows:

WATER INFRASTRUCTURE

Site Map

1. All activities set out below are illustrated on the Site Map, attached hereto as Attachment B and considered part of this Agreement. Upon execution of this Agreement, any and all disagreements or misunderstandings regarding this Agreement shall be resolved as to their consistency and compliance with the content of the Site Map.

District Facilities

2. The District shall be responsible for the construction of, and shall subsequently own, operate, and maintain an 8-inch water service main to be constructed in a southerly direction along KY Route 3 to the intersection with Airport Road, at which point the line size will be increased, becoming a 10-inch main extending in an easterly direction along Airport

COPY

Road to the entrance to the prison. At the prison entrance, the District will increase the main size to 16-inch, install a 16-inch Tee and Valve for service to the prison, and continue the 16-inch main in an southerly direction to and connecting with a ground level water storage tank as noted in paragraph 3 below. The 10-inch and 16-inch water lines from the PCUC pump station to the Honey Branch Storage Tank (as noted in Paragraph 3) shall be hereafter referred to as the Honey Branch Storage Tank Line.

3. The District shall construct a water storage tank of approximately 1,040,000 gallons capacity (hereinafter referred to as the "Honey Branch Storage Tank") as shown on the attached site map, and shall reserve storage space necessary for 300,000 gallons per day for domestic water service and 240,000 gallons per day for line protection. ~~The District shall allow PCUC to have physical access to the Honey Branch Storage Tank for the purpose of installing and maintaining electronic telemetry controls to be used for monitoring the level of the water in the tank.~~

4. The District will have and maintain metering equipment located near the intersection of Airport Road and KY Route 3. The metering equipment will be located inside a booster pump station constructed by PCUC which will be described more thoroughly in paragraphs below.

PCUC Facilities

5. PCUC shall be responsible for the construction of, and shall subsequently own, operate, and maintain 10-inch and 12-inch service mains, including two (2) booster pump stations and one (1) water storage tank; such main shall be constructed in a northerly direction

along KY Route 3 to the intersection of Airport Road where the second PCUC pump station is located. The PCUC main will connect to the District's 10-inch main at this point.

6. PCUC will construct a booster pump station near the intersection of KY Route 3 and Airport Road to pump water into the District's Honey Branch Storage Tank Line. This station will house PCUC's pumping equipment, as well as both PCUC's and the District's metering equipment. ~~Both parties shall have unrestricted access to this station for the purpose of operation and maintenance of their respective facilities.~~ The metering equipment for both parties shall consist of appropriately sized meters, piping, and valves as well as appropriate pressure gauges and ports for sampling. Both parties shall be allowed to install electronic telemetry equipment on the metering equipment of both parties.

7. PCUC will install a 16-inch main from the point of connection with the District's system as described in Paragraph 2, to a meter vault on the Federal Prison's property which is the point of connection for the Federal Prison's water system. This vault shall contain an appropriately sized meter, valving, and piping to meet the Federal Prison's needs. Pressure gauges and ports for sampling, as well as telemetry equipment, shall also be included. ~~Both Parties, as well as appropriate Federal Prison officials, shall have unrestricted access to this meter vault and the District shall be allowed to install telemetry equipment for their use to this meter.~~

Both parties shall complete all construction set forth herein no later than February 1, 2001.

COPY

JOINT OPERATION

8. PCUC will provide water service to the Federal Prison, as described herein, pursuant to a separate contractual agreement between the Bureau and PCUC, satisfactory in form and substance to PCUC and solely at its discretion.

9. Water services as may be provided by the District from its own water production to other tenants of the Industrial Park and all others in the service area of the District shall be provided pursuant to separate contractual agreements satisfactory in form and substance to the District and solely at its discretion.

10. While both Parties will endeavor to provide at least 50 percent of the Federal Prison's water requirements on a daily and monthly basis, the Parties understand that the actual percentage of water supplied to the Federal Prison by either the District or PCUC may vary on a daily or monthly basis.

11. Under normal operation, PCUC will pump each day into the District's Honey Branch Storage Tank Line an amount of water equal to 50 percent of the water usage of the Federal Prison for the previous day, and the District shall operate the Honey Branch Storage Tank in such a manner as to receive this water therein. The District shall pump a sufficient quantity of water into the District's Honey Branch Storage Tank to maintain an adequate level of water necessary to provide reliable service to the Federal Prison.

12. Adequate water will be maintained in the Honey Branch Storage Tank at all times to supply both the domestic water requirements and maximum fire protection for the Federal Prison. If the level of water in the Honey Branch Storage Tank is not sufficient to provide

reliable water service to the Federal Prison, then PCUC will pump into the Honey Branch Storage Tank Line a quantity of water that exceeds 50 percent of the water usage of the Federal Prison for the previous day, thus supplying more than 50 percent of water requirements of the Federal Prison. It may possible that PCUC will need to pump more than 100 percent of the water usage of the Federal Prison for the previous day, thus providing emergency backup water service to the District. Any emergency backup service supplied hereunder shall be fully interruptible at any time at PCUC's sole discretion. PCUC shall have no obligation to supply emergency backup service to the District. In no event shall the provision of emergency backup water service to the District impair PCUC's ability to serve the full requirements of the Federal Prison. In the event that the supply of emergency backup water service to the District impairs PCUC's ability to serve the full requirements of the Federal Prison or other PCUC customers, then the District shall be required to curtail end uses of the water from the Honey Branch Storage Tank and Honey Branch Storage Tank Line other than the Federal Prison's use.

13. PCUC will bill the Bureau each month at its contracted rate based on the amount of water delivered to the Federal Prison determined from monthly meter readings for service to the Federal Prison at the Prison Master Meter. PCUC will receive full remittance from the Bureau for all such water supplied. Payment to the District from remittance received from the Bureau will be calculated by applying the following rate to the amount of water provided each month by the District to serve the Federal Prison:

First 112,000 gallons per month	\$348.50 per month
All over 112,000 gallons per month	\$3.05 per 1,000 gallons

g-by m to

The amount of water provided each month by the District to serve the Federal Prison shall be determined by subtracting (a) the amount of water that Prestonsburg pumps into the Honey Branch Storage Tank Line for the month (based on meter readings at PCUC Meter) from (b) the amount of water delivered to the Federal Prison for the month (based on meter readings at the Prison Master Meter). To modify the rates set forth in this numbered paragraph, the District must provide PCUC a notice of any proposed rate change at least 120 days prior to filing for a rate change with the Public Service Commission; however, in no event shall any component of the District's rate be increased until a simultaneous and corresponding increase in the contract rate between PCUC and the Federal Prison actually occurs so that any such increase by the District is fully passed-through to the Federal Prison. Any change in rate by the District must be supported by a cost of service study consistent with standard industry ratemaking practices for water utilities. Payment by PCUC to the District for water supplied to the Federal Prison shall be made within ten (10) working days from receipt of remittance received from the Bureau.

14. In the event that Prestonsburg pumps an amount of water into the Honey Branch Storage Tank for the month (based on meter readings at the PCUC Meter) that exceeds the amount of water delivered to the Federal Prison for the month (based on meter readings at the Prison Master Meter), resulting in PCUC providing emergency backup water service of a non-recurring nature to the District, PCUC shall bill the District at the following rate for emergency back-up water service:

First 112,000 gallons per month	\$348.50 per month
All over 112,000 gallons per month	\$3.05 per 1,000 gallons

Payment by the District to PCUC for water supplied to the District for emergency backup water service shall be made within ten (10) working days from the date of PCUC's invoice to the District. To modify the rates set forth in this numbered paragraph, the PCUC must provide the District a notice of any proposed rate change 120 days in advance of the effective date of the proposed change in rates, except that PCUC may, without notice, increase or decrease the rate by the same percentage as any increase or decrease in the District's rate to PCUC as set forth in number paragraph 13, above. Any such change in rate that does not correspond to the percentage change in the District's rate for service to PCUC must be supported by a cost of service study consistent with standard industry ratemaking practices for water utilities:

15. PCUC and the District shall each be responsible for the loss of any water that occurs on their respective facilities.

16. Each party to this Agreement shall have unrestricted access to all meters and any electronic telemetry equipment of the other for purposes of verification and system operations.

~~Designee staff of both PCUC and the District shall read the meters cited in this Agreement together each month, at a mutually agreed upon time, day and date.~~ 14th

17. Each Party to this Agreement shall bear the expense of having its meter(s) tested annually by an independent, certified meter testing service, and a copy of the report of such test shall be forwarded to the other party. Either Party may request the other to conduct additional testing but so as not to exceed more than one such additional test in each calendar year

18. This Agreement shall remain in full force and effect from the date written above until and at which time PCUC shall no longer provide water service to the Federal Prison.

19. Force Majeure. All obligations of either party with respect to service hereunder shall be excused without liability during the pendency of any condition of force majeure, which causes the party claiming force majeure to be unable to meet its performance obligations hereunder. Force majeure shall include any act, event or condition beyond the reasonable control of the party claiming force majeure, and shall include, but not be limited to, any act of God, fire, storm, earthquake, freezing condition, wind, flood, drought, snow, water used to fight fires, line breaks, environmental release, breakage of or delay in receiving parts, equipment or supplies, or shortage thereof, strike or lockout, or any act, event or requirement of any governmental law, regulation or entity. Force majeure shall not include routine line leakage or financial inability to pay.

20. Nothing in this Agreement shall subject PCUC to regulation by the Kentucky Public Service Commission ("KYPSC"). To the extent the KYPSC exercises jurisdiction over any aspect of this Agreement, PCUC shall remain free to withdraw without penalty or other obligation from this Agreement upon providing 30 days written notice to the District.

21. Indemnification by District. District shall indemnify, defend and hold harmless PCUC and its officers, directors, employees, and agents from, against and with respect to any claim, liability, obligation, loss, damage, assessment, judgment, cost, expense (including without limitation, reasonable attorneys' fees and costs) arising out of or in any manner incident, relating or attributable to any loss, claim, action, proceeding or determination arising out of District's obligations or performance under this Agreement.

22. Indemnification by PCUC. PCUC shall indemnify, defend and hold harmless District and its officers, directors, employees and agents from, against and with respect to any

claim, liability, obligation, loss, damage, assessment, judgment, cost, expense (including without limitation, reasonable attorneys' fees and costs) attributable to any loss, claim, action, proceeding or determination arising out of PCUC's obligations or performance under this Agreement.

23. Indemnification Clause.

(a) PCUC or District, if claiming indemnity hereunder (the "Indemnified Party"), agrees to give prompt notice to the party or parties from which indemnity may be sought (the "Indemnifying Party") of the assertion of any claim or the commencement of any suit, action or proceeding in respect of which indemnity may be sought hereunder.

(b) At the request of the Indemnified Party, the Indemnifying Party shall assume the defense of any such suit, action or proceeding, including its compromise or settlement, in which the outcome would give rise to a claim for indemnification, and shall be fully responsible for the outcome hereof. The Indemnifying Party may not compromise or settle any such suit, action or proceeding without the Indemnified Party's consent which shall not be unreasonably withheld.

MISCELLANEOUS

24. Governing Law. This Agreement shall be governed by and construed and interpreted in accordance with the laws of the Commonwealth of Kentucky.

25. Entire Agreement/Amendments.

(a) This Agreement constitutes the entire Agreement among the parties pertaining to the subject matter hereof and supersedes all prior and contemporaneous agreements,

understandings, negotiations and discussions, whether oral or written, of the parties pertaining to the subject matter hereof.

(b) No amendment, supplement, modification, waiver or termination of this Agreement shall be implied or be binding unless executed in writing by a party to be bound thereby. No waiver of any of the provisions of this Agreement shall be deemed or shall constitute a waiver of any other provision hereof (whether or not similar), nor shall such waiver constitute a continuing waiver unless otherwise expressly therein provided.

26. Assignment. All of the terms and provisions of this Agreement shall be binding upon and inure to the benefit of the parties, their successors, heirs and assigns, subject to regulatory approval where required. The rights and obligations provided by this Agreement may not be assigned or transferred by a party without the written consent of the other party, which consent may not unreasonably be withheld.

27. Headings. Headings used in this Agreement are for convenience only and are in no way to be construed as part of this Agreement or as a limitation of the scope of the particular articles or sections to which they refer.

28. Counterparts. This Agreement may be executed simultaneously in two or more counterparts, each of which shall be deemed an original, but all of which together shall constitute one and the same Agreement.

29. Notices. All notices, requests, demands and other communications required or permitted under this Agreement shall be in writing and shall be considered to have been duly given when delivered by hand, or sent by first class certified or registered mail, postage prepaid, return receipt requested, in each case to the appropriate addresses (or to such other addresses as a

30. Specific Performance. The parties hereto agree that money damages and any other remedy available at law may be inadequate to redress or remedy any loss or damage suffered by a party hereto upon any breach of this Agreement, and the parties therefore agree that, in addition to recovery on any claim for money damages or obtaining any other remedy available at law, a party hereto also may enforce the terms of this Agreement by injunction and/or specific performance and/or may obtain any other appropriate remedy.

This Agreement is made as of the year and day first above written, and shall be effective as of that date without regard to the fact that execution hereof by the parties shall have been effected at the same time or at other times.

MARTIN COUNTY WATER DISTRICT

(SEAL)

BY: 
John R. Triplett, Chairman

ATTEST:


SECRETARY

PRESTONSBURG CITY'S UTILITIES COMMISSION

BY: 
Seldon D. Home, Superintendent

ATTEST:


C. J. McNally, Chairman
of the Prestonsburg City's
Utilities Commission