



a PPL company

Jeff DeRouen  
Executive Director  
Kentucky Public Service Commission  
211 Sower Boulevard  
Frankfort, Kentucky 40602-0615

**Louisville Gas and  
Electric Company**  
State Regulation and Rates  
220 West Main Street  
PO Box 32010  
Louisville, Kentucky 40232  
www.lge-ku.com

Robert M. Conroy  
Director - Rates  
T 502-627-3324  
F 502-627-3213  
robert.conroy@lge-ku.com

September 12, 2012

**RE: AN EXAMINATION OF THE APPLICATION OF THE  
FUEL ADJUSTMENT CLAUSE OF LOUISVILLE GAS  
AND ELECTRIC COMPANY FROM NOVEMBER 1, 2011  
THROUGH APRIL 30, 2012 - CASE NO. 2012-00321**

Dear Mr. DeRouen:

Enclosed please find an original and ten (10) copies of the Response of Louisville Gas and Electric Company to Information Requested in the Appendix of the Commission's Order dated August 22, 2012, in the above-referenced proceeding.

Also enclosed are an original and ten (10) copies of a Petition for Confidential Protection regarding certain information provided in response to Question Nos. 12 and 19.

Please contact me if you have any questions concerning this filing.

Sincerely,

A handwritten signature in black ink, appearing to read 'Robert M. Conroy', is written over a horizontal line. To the right of the signature is a large, stylized circular flourish.

Robert M. Conroy

Enclosures

**COMMONWEALTH OF KENTUCKY  
BEFORE THE PUBLIC SERVICE COMMISSION**

**In the Matter of:**

**AN EXAMINATION OF THE APPLICATION OF THE )  
FUEL ADJUSTMENT CLAUSE OF LOUISVILLE GAS ) CASE NO.  
AND ELECTRIC COMPANY FROM NOVEMBER 1, ) 2012-00321  
2011 THROUGH APRIL 30, 2012 )**

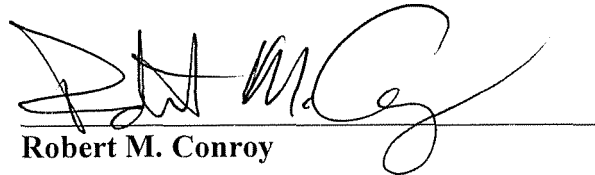
**RESPONSE OF  
LOUISVILLE GAS AND ELECTRIC COMPANY  
TO  
INFORMATION REQUESTED IN  
APPENDIX OF COMMISSION'S ORDER  
DATED AUGUST 22, 2012**

**FILED: SEPTEMBER 12, 2012**

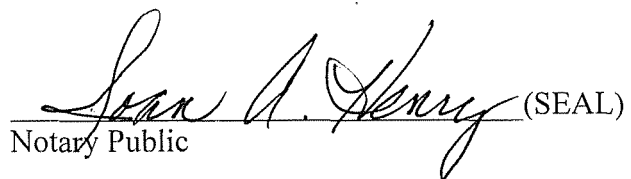
VERIFICATION

COMMONWEALTH OF KENTUCKY )  
 ) SS:  
COUNTY OF JEFFERSON )

The undersigned, **Robert M. Conroy**, being duly sworn, deposes and says that he is Director - Rates for LG&E and KU Services Company, and that he has personal knowledge of the matters set forth in the responses for which he is identified as the witness, and the answers contained therein are true and correct to the best of his information, knowledge and belief.

  
Robert M. Conroy

Subscribed and sworn to before me, a Notary Public in and before said County and State, this 10<sup>th</sup> day of September 2012.

 (SEAL)  
Notary Public

My Commission Expires:

July 21, 2015

VERIFICATION

COMMONWEALTH OF KENTUCKY )  
 ) SS:  
COUNTY OF JEFFERSON )

The undersigned, **Charles R. Schram**, being duly sworn, deposes and says that he is Director – Energy Planning, Analysis and Forecasting for LG&E and KU Services Company, and that he has personal knowledge of the matters set forth in the responses for which he is identified as the witness, and the answers contained therein are true and correct to the best of his information, knowledge and belief.

*Charles R. Schram*  
Charles R. Schram

Subscribed and sworn to before me, a Notary Public in and before said County and State, this 10<sup>th</sup> day of September 2012.

*Jack A. Perry* (SEAL)  
Notary Public

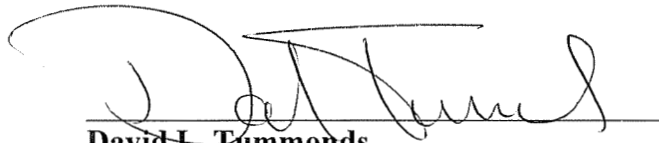
My Commission Expires:

*July 21, 2015*

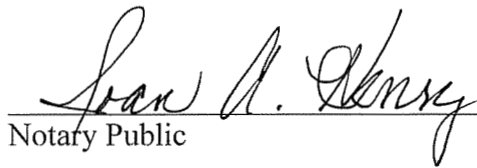
VERIFICATION

COMMONWEALTH OF KENTUCKY )  
 ) SS:  
COUNTY OF JEFFERSON )

The undersigned, **David L. Tummonds**, being duly sworn, deposes and says that he is Director – Generation Services for LG&E and KU Services Company, and that he has personal knowledge of the matters set forth in the responses for which he is identified as the witness, and the answers contained therein are true and correct to the best of his information, knowledge, and belief.

  
**David L. Tummonds**

Subscribed and sworn to before me, a Notary Public in and before said County and State, this 10<sup>th</sup> day of September 2012.

 (SEAL)  
Notary Public


My Commission Expires:

July 21, 2015

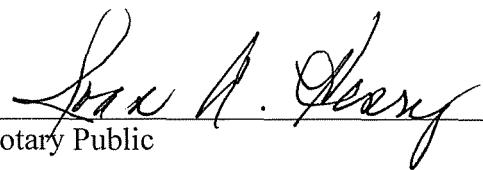
VERIFICATION

COMMONWEALTH OF KENTUCKY )  
 ) SS:  
COUNTY OF JEFFERSON )

The undersigned, **Mike Dotson**, being duly sworn, deposes and says that he is Manager – LG&E and KU Fuels for LG&E and KU Services Company, and that he has personal knowledge of the matters set forth in the responses for which he is identified as the witness, and the answers contained therein are true and correct to the best of his information, knowledge and belief.

  
\_\_\_\_\_  
Mike Dotson

Subscribed and sworn to before me, a Notary Public in and before said County and State, this 10<sup>th</sup> day of September 2012.

 (SEAL)  
\_\_\_\_\_  
Notary Public

My Commission Expires:

July 21, 2015



**LOUISVILLE GAS AND ELECTRIC COMPANY**

**Response to Information Requested in Appendix of  
Commission's Order Dated August 22, 2012**

**Case No. 2012-00321**

**Question No. 1**

**Witness: Mike Dotson**

Q-1. For the period from November 1, 2011 through April 30, 2012, list each vendor from whom coal was purchased and the quantities and the nature of each purchase (e.g., spot or contract). For the period under review in total, provide the percentage of purchases that were spot versus contract. For contract purchases, state whether the contract has been filed with the Commission. If no, explain why it has not been filed.

A-1. The contracts have been filed with the Commission.

<b><u>PURCHASE VENDOR</u></b>	<b><u>PURCHASE TONNAGE</u></b>	<b><u>TYPE</u></b>
Alliance – L06010	730,005	Contract
Alliance – J09002	734,482	Contract
Alliance – J12007	1,034,550	Contract
Armstrong Coal – J07032	456,042	Contract
Armstrong Coal – J10009	310,004	Contract
Armstrong Coal – J12004	154,767	Contract
Foresight Coal Sales – L11033	32,411	Spot
Oxford Mining – J07003	43,347	Contract
Oxford Mining – J12003	38,923	Contract
Patriot Coal Company – J12001	132,858	Contract
Patriot Coal Company – J12012	56,699	Spot
Peabody Coal Sales – L06012	127,569	Contract
Peabody Coal Sales – J12011	221,431	Contract
Rhino Energy – J08028	34,994	Contract
W. Kentucky Minerals- J10001	<u>172,970</u>	Contract
TOTAL	4,281,051	
	4,191,941	98% Contract
	<u>89,110</u>	2% Spot
	4,281,051	





**LOUISVILLE GAS AND ELECTRIC COMPANY**

**Response to Information Requested in Appendix of  
Commission's Order Dated August 22, 2012**

**Case No. 2012-00321**

**Question No. 2**

**Witness: Robert M. Conroy**

Q-2. For the period from November 1, 2011 through April 30, 2012, list each vendor from whom natural gas was purchased for generation and the quantities and the nature of each purchase (e.g., spot or contract). For contract purchases, state whether the contract has been filed with the Commission. If no, explain why it has not been filed.

A-2. Please see the attachment for the list of vendors, associated quantities, and the nature of the natural gas purchases. Please note that purchases from Louisville Gas & Electric Company are primarily for LG&E-owned coal and gas fired generation and purchases from Columbia Gas are for KU-owned gas fired generation served by the local distribution company; however, other natural gas purchases are made on an aggregate basis and not by utility ownership percentages of individual generating units. KU and LG&E have joint ownership in certain combustion turbine units. Trimble County Units 5 and 6 are owned 71% by KU and 29% by LG&E. Trimble County Units 7, 8, 9, and 10 are owned 63% by KU and 37% by LG&E. Brown Unit 5 and Paddy's Run Unit 13 are owned 47% by KU and 53% by LG&E. Brown Units 6 and 7 are owned 62% by KU and 38% by LG&E. Fuel expenses, not individual natural gas purchase transactions, are allocated to the Companies based on their respective ownership percentages.

Purchases from Louisville Gas and Electric Company's Gas Distribution Business are purchases made in accordance with a Special Contract under 807 KAR 5:011 Section 13.<sup>1</sup> All remaining purchases are spot purchases.

---

<sup>1</sup> The Special Contract for Firm Gas Sales and Firm Transportation Service dated September 28, 2007 and effective April 11, 2008, between Louisville Gas and Electric Company, on behalf of its Gas Distribution Business, and Louisville Gas and Electric Company and Kentucky Utilities Company, on behalf of their Electric Generation Business, was approved by the Kentucky Public Service Commission in Case No. 2007-00449.

**Natural Gas Purchases for Generation 11/1/2011 - 4/30/2012**

Purchase Vendor	Type	MMBTU
Anadarko Energy Trading	Spot	125,794
Associated Energy	Spot	20,500
Atmos Energy	Spot	134,499
BG Energy Merchants	Spot	195,998
BP Energy Company	Spot	103,590
Chevron	Spot	45,800
CIMA Energy	Spot	68,000
Citigroup Energy	Spot	1,418,950
Columbia Gas of Kentucky	Spot*	5,299
Colonial Energy	Spot	134,900
Conoco Phillips	Spot	442,112
Enbridge	Spot	43,300
Gavilon	Spot	190,700
JLA Energy	Spot	142,000
Louisville Gas & Electric	Special Contract*	311,930
LouisDryfus Energy Services	Spot	85,400
MacquarieCook Energy	Spot	430,770
Marthon Petroleum	Spot	1,000
Mieco Inc.	Spot	26,400
New Energy Trading	Spot	33,100
NJR Energy Services	Spot	307,200
ONEOK Energy	Spot	537,700
Proliance Energy	Spot	30,000
Sequent Energy	Spot	222,700
Shell Energy North America	Spot	495,759
Southwestern Energy Services	Spot	46,800
Tenaska Energy Marketing	Spot	273,400
Tennessee Gas Pipeline	Imbalance Cashout	12,555
Total Gas & Power North America	Spot	2,800
United Energy Trading	Spot	16,000
Vitol Inc.	Spot	26,600
		<u>5,931,556</u>

\*-Local Distribution Company service, with no volume purchase commitments.



**LOUISVILLE GAS AND ELECTRIC COMPANY**

**Response to Information Requested in Appendix of  
Commission's Order Dated August 22, 2012**

**Case No. 2012-00321**

**Question No. 3**

**Witness: Robert M. Conroy / Mike Dotson**

Q-3. State whether LG&E engages in hedging activities for its coal or natural gas purchases used for generation. If yes, describe the hedging activities in detail.

A-3. LG&E does not engage in financial hedging activities for its coal purchases. LG&E does use physical hedging in contracting for coal. LG&E uses the following guidelines in utilization of coal under contract:

1 year out	90 – 100%
2 years out	80 – 95%
3 years out	40 – 90%
4 years out	30 - 70%
5 years out	10 - 50%
6 years out	0 - 30%

LG&E does not engage in hedging activities for natural gas purchases.



**LOUISVILLE GAS AND ELECTRIC COMPANY**

**Response to Information Requested in Appendix of  
Commission's Order Dated August 22, 2012**

**Case No. 2012-00321**

**Question No. 4**

**Witness: Charles R. Schram / Mike Dotson**

Q-4. For each generating station or unit for which a separate coal pile is maintained, state, for the period from November 1, 2011 through April 30, 2012, the actual amount of coal burned in tons, the actual amount of coal deliveries in tons, the total kWh generated, and the actual capacity factor at which the plant operated.

A-4. The information requested from November 1, 2011 to April 30, 2012 is shown in the table below:

Plant	Coal Burn (Tons)	Coal Receipts (Tons)	Net MWh	Capacity Factor (Net MWh)/ (period hrs x MW rating)
Cane Run	594,242	619,376	1,214,338	49.4%
Mill Creek	2,095,614	2,173,027	4,493,025	69.4%
Trimble County HS	N/A	1,488,648	N/A	N/A
Trimble County PRB	N/A	315,844	N/A	N/A
Trimble County 1	781,124	N/A	1,660,315	73.9%
Trimble County 2	938,107	N/A	2,145,295	64.6%

Notes: 1 – Trimble County values reflect 100% of the unit. Trimble County 2 is owned by KU (60.75%), LG&E (14.25%), IMPA (12.88%), and IMEA (12.12%).  
2 – The North American Electric Reliability Council Generation Availability Data System defines capacity factor as the value equal to the net MWh produced divided by the product of the hours in the period and the unit rating.





**LOUISVILLE GAS AND ELECTRIC COMPANY**

**Response to Information Requested in Appendix of  
Commission's Order Dated August 22, 2012**

**Case No. 2012-00321**

**Question No. 5**

**Witness: Charles R. Schram**

Q-5. List all firm power commitments for LG&E from November 1, 2011 through April 30, 2012 for (a) purchases and (b) sales. This list shall identify the electric utility, the amount of commitment in MW, and the purpose of the commitment (e.g., peaking, emergency).

A-5. a. Firm Purchases

The firm purchases from Ohio Valley Electric Corporation (OVEC) for the review period are shown in the table below. LG&E purchased its participation ratio (5.63%) of the OVEC released capacity for the months in question:

Utility	Companies' LG&E Portion		Purpose
	Amt (MW)	(MW)	
OVEC (Nov 2011)	~ 136	~ 94	Baseload
OVEC (Dec 2011)	~ 155	~ 107	Baseload
OVEC (Jan 2012)	~ 144	~ 100	Baseload
OVEC (Feb 2012)	~ 132	~ 91	Baseload
OVEC (Mar 2012)	~ 135	~ 94	Baseload
OVEC (Apr 2012)	~ 145	~ 100	Baseload

b. Firm Sales

None.



**LOUISVILLE GAS AND ELECTRIC COMPANY**

**Response to Information Requested in Appendix of  
Commission's Order Dated August 22, 2012**

**Case No. 2012-00321**

**Question No. 6**

**Witness: Robert M. Conroy**

Q-6. Provide a monthly billing summary of sales to all electric utilities for the period November 1, 2011 through April 30, 2012.

A-6. See attached.



Month Ended: November-30-2011

Louisville Gas and Electric Company

Power Transaction Schedule

COMPANY	Type of Transaction	KWH	Billing Components			Total Charges(\$)	
			Demand(\$)	Fuel Charges(\$)	Other Charges(\$)		
<b>SALES</b>							
AMERICAN ELECTRIC POWER SERVICE CORP.	AEP	Economy		\$ 78,636.19	\$ 42,057.57	\$ 120,693.76	
CARGILL- ALLIANT, LLC	CARG	Economy		\$ 174,412.37	\$ 93,282.24	\$ 267,694.61	
CITIGROUP ENERGY, INC.	CITI	Economy		\$ 4,230.49	\$ 2,262.62	\$ 6,493.11	
ENDURE ENERGY	ENDU	Economy		\$ 34,016.69	\$ 18,193.38	\$ 52,210.07	
ILLINOIS MUNICIPAL ELECTRIC AGENCY	IMEA	Economy		\$ 25,345.22	\$ 26,391.83	\$ 51,737.05	
INDIANA MUNICIPAL POWER AGENCY	IMPA	Economy		\$ 27,197.32	\$ 23,857.43	\$ 51,054.75	
ENERGY IMBALANCE	IMBL	Economy		\$ 39,430.40	\$ 21,088.85	\$ 60,519.25	
MIDWEST INDEPENDENT TRANSMISSION SYSTEM OPERATOR, INC.	MISO	Economy		\$ 132,000.51	\$ 70,598.78	\$ 202,599.29	
PJM INTERCONNECTION ASSOCIATION	PJM	Economy		\$ 3,996,458.61	\$ 2,136,291.23	\$ 6,132,749.84	
RAINBOW ENERGY MARKETING CORP	REMC	Economy		\$ 2,189.02	\$ 1,170.77	\$ 3,359.79	
THE ENERGY AUTHORITY	TEA	Economy		\$ 98,540.23	\$ 52,702.99	\$ 151,243.22	
TENASKA POWER SERVICES CO.	TPS	Economy		\$ 184,689.15	\$ 98,778.64	\$ 283,467.79	
TENNESSEE VALLEY AUTHORITY	TVA	Economy		\$ 243,694.07	\$ 130,336.67	\$ 374,030.74	
WESTAR ENERGY, INC.	WSTR	Economy		\$ 7,898.02	\$ 4,224.16	\$ 12,122.18	
KENTUCKY UTILITIES COMPANY	KU	Economy		\$ 5,409,752.58	\$ -	\$ 5,409,752.58	
<b>SUBTOTAL</b>				\$ -	\$ 10,458,490.87	\$ 2,721,237.16	\$ 13,179,728.03
<b>TOTAL SALES</b>				\$ -	\$ 10,458,490.87	\$ 2,721,237.16	\$ 13,179,728.03

Energy Imbalance is used to supply energy for mismatch between scheduled delivery and actual loads that have occurred over an hour.



Month Ended: December-31-2011

Louisville Gas and Electric Company

Power Transaction Schedule

COMPANY	Type of Transaction	KWH	Billing Components			Total Charges(\$)
			Demand(\$)	Fuel Charges(\$)	Other Charges(\$)	
<b>SALES</b>						
AMERICAN ELECTRIC POWER SERVICE CORP.	AEP	Economy		\$ 100,419.08	\$ 40,457.59	\$ 140,876.67
CARGILL- ALLIANT, LLC	CARG	Economy		\$ 27,500.65	\$ 11,079.66	\$ 38,580.31
EAST KENTUCKY POWER COOPERATIVE	EKPC	Economy		\$ 78,864.66	\$ 31,773.59	\$ 110,638.25
ENDURE ENERGY	ENDU	Economy		\$ 77,870.63	\$ 31,373.10	\$ 109,243.73
ILLINOIS MUNICIPAL ELECTRIC AGENCY	IMEA	Economy		\$ 14,128.95	\$ 9,145.77	\$ 23,274.72
INDIANA MUNICIPAL POWER AGENCY	IMPA	Economy		\$ 111,258.84	\$ 59,986.21	\$ 171,245.05
ENERGY IMBALANCE	IMBL	Economy		\$ 39,545.66	\$ 15,932.45	\$ 55,478.11
MIDWEST INDEPENDENT TRANSMISSION SYSTEM OPERATOR, INC.	MISO	Economy		\$ 438,317.88	\$ 176,592.81	\$ 614,910.69
PJM INTERCONNECTION ASSOCIATION	PJM	Economy		\$ 2,608,883.81	\$ 1,051,086.70	\$ 3,659,970.51
THE ENERGY AUTHORITY	TEA	Economy		\$ 47,768.91	\$ 19,245.50	\$ 67,014.41
TENASKA POWER SERVICES CO.	TPS	Economy		\$ 29,997.15	\$ 12,085.48	\$ 42,082.63
TENNESSEE VALLEY AUTHORITY	TVA	Economy		\$ 478,042.40	\$ 192,597.33	\$ 670,639.73
WESTAR ENERGY, INC.	WSTR	Economy		\$ 1,318.70	\$ 531.30	\$ 1,850.00
KENTUCKY UTILITIES COMPANY	KU	Economy		\$ 9,545,512.73	\$ -	\$ 9,545,512.73
<b>SUBTOTAL</b>				\$ 13,599,430.05	\$ 1,651,887.49	\$ 15,251,317.54
<b>TOTAL SALES</b>				\$ 13,599,430.05	\$ 1,651,887.49	\$ 15,251,317.54

Energy Imbalance is used to supply energy for mismatch between scheduled delivery and actual loads that have occurred over an hour.



Louisville Gas and Electric Company

Power Transaction Schedule

Month Ended: January-31-2012

COMPANY	Type of Transaction	KWH	Billing Components			Total Charges(\$)
			Demand(\$)	Fuel Charges(\$)	Other Charges(\$)	
<b>SALES</b>						
AMERICAN ELECTRIC POWER SERVICE CORP.	AEP	Economy	1,721,000	\$ 47,639.18	\$ 16,625.47	\$ 64,264.65
AMEREN ENERGY MARKETING COMPANY	AMEM	Economy	499,000	\$ 12,204.69	\$ 4,259.28	\$ 16,463.97
CARGILL- ALLIANT, LLC	CARG	Economy	2,115,000	\$ 56,718.20	\$ 19,793.93	\$ 76,512.13
EDF TRADING	EDF	Economy	972,000	\$ 26,659.45	\$ 9,303.81	\$ 35,963.26
ENDURE ENERGY	ENDU	Economy	3,938,000	\$ 111,848.15	\$ 39,033.59	\$ 150,881.74
ILLINOIS MUNICIPAL ELECTRIC AGENCY	IMEA	Economy	285,000	\$ 13,038.33	\$ 11,772.17	\$ 24,810.50
INDIANA MUNICIPAL POWER AGENCY	IMPA	Economy	661,000	\$ 27,304.17	\$ 21,496.62	\$ 48,800.79
ENERGY IMBALANCE	IMBL	Economy	618,000	\$ 17,430.02	\$ 6,055.12	\$ 23,485.14
MIDWEST INDEPENDENT TRANSMISSION SYSTEM OPERATOR, INC.	MISO	Economy	4,905,000	\$ 133,785.05	\$ 46,689.29	\$ 180,474.34
PJM INTERCONNECTION ASSOCIATION	PJM	Economy	64,965,000	\$ 1,694,831.48	\$ 591,474.69	\$ 2,286,306.17
THE ENERGY AUTHORITY	TEA	Economy	3,051,000	\$ 83,546.54	\$ 29,156.68	\$ 112,703.22
TENASKA POWER SERVICES CO.	TPS	Economy	2,888,000	\$ 77,764.37	\$ 27,138.77	\$ 104,903.14
TENNESSEE VALLEY AUTHORITY	TVA	Economy	9,020,000	\$ 234,028.23	\$ 81,672.88	\$ 315,701.11
WESTAR ENERGY, INC.	WSTR	Economy	50,000	\$ 1,371.40	\$ 478.60	\$ 1,850.00
KENTUCKY UTILITIES COMPANY	KU	Economy	436,448,000	\$ 9,670,814.43	\$ -	\$ 9,670,814.43
SUBTOTAL			532,136,000	\$ -	\$ 12,208,983.69	\$ 904,950.90
<b>TOTAL SALES</b>			<b>532,136,000</b>	<b>\$ -</b>	<b>\$ 12,208,983.69</b>	<b>\$ 904,950.90</b>

Energy Imbalance is used to supply energy for mismatch between scheduled delivery and actual loads that have occurred over an hour.



Louisville Gas and Electric Company

Power Transaction Schedule

Month Ended: February-29-2012

COMPANY	Type of Transaction	KWH	Billing Components			Total Charges(\$)
			Demand(\$)	Fuel Charges(\$)	Other Charges(\$)	
<b>SALES</b>						
CARGILL- ALLIANT, LLC	CARG	Economy		\$ 24,414.56	\$ 6,060.73	\$ 30,475.29
ENDURE ENERGY	ENDU	Economy		\$ 8,159.94	\$ 2,025.64	\$ 10,185.58
ILLINOIS MUNICIPAL ELECTRIC AGENCY	IMEA	Economy		\$ 16,307.06	\$ 10,592.41	\$ 26,899.47
INDIANA MUNICIPAL POWER AGENCY	IMPA	Economy		\$ 48,698.67	\$ 31,170.89	\$ 79,869.56
ENERGY IMBALANCE	IMBL	Economy		\$ 20,588.01	\$ 5,110.81	\$ 25,698.82
MIDWEST INDEPENDENT TRANSMISSION SYSTEM OPERATOR, INC.	MISO	Economy		\$ 45,831.69	\$ 11,377.36	\$ 57,209.05
OWENSBORO MUNICIPAL UTILITIES	OMU	Economy		\$ 933.23	\$ 231.67	\$ 1,164.90
PJM INTERCONNECTION ASSOCIATION	PJM	Economy		\$ 166,864.01	\$ 41,422.66	\$ 208,286.67
THE ENERGY AUTHORITY	TEA	Economy		\$ 18,179.92	\$ 4,513.02	\$ 22,692.94
TENASKA POWER SERVICES CO.	TPS	Economy		\$ 8,310.69	\$ 2,063.06	\$ 10,373.75
TENNESSEE VALLEY AUTHORITY	TVA	Economy		\$ 45,208.50	\$ 11,222.66	\$ 56,431.16
KENTUCKY UTILITIES COMPANY	KU	Economy		\$ 6,444,956.79	\$ -	\$ 6,444,956.79
SUBTOTAL		303,887,000	\$ -	\$ 6,848,453.07	\$ 125,790.91	\$ 6,974,243.98
<b>TOTAL SALES</b>		<b>303,887,000</b>	<b>\$ -</b>	<b>\$ 6,848,453.07</b>	<b>\$ 125,790.91</b>	<b>\$ 6,974,243.98</b>

Energy Imbalance is used to supply energy for mismatch between scheduled delivery and actual loads that have occurred over an hour.



Month Ended: March-31-2012

Louisville Gas and Electric Company

Power Transaction Schedule

COMPANY

SALES

	Type of Transaction	KWH	Billing Components			Total Charges(\$)
			Demand(\$)	Fuel Charges(\$)	Other Charges(\$)	
AMERICAN ELECTRIC POWER SERVICE CORP.	AEP	Economy		\$ 48,147.49	\$ 17,328.66	\$ 65,476.15
CARGILL- ALLIANT, LLC	CARG	Economy		\$ 18,008.10	\$ 6,481.25	\$ 24,489.35
ETC ENDURE	ETC	Economy		\$ 62,915.81	\$ 22,643.90	\$ 85,559.71
ILLINOIS MUNICIPAL ELECTRIC AGENCY	IMEA	Economy		\$ 12,108.12	\$ 12,534.15	\$ 24,642.27
INDIANA MUNICIPAL POWER AGENCY	IMPA	Economy		\$ 34,495.71	\$ 29,741.33	\$ 64,237.04
ENERGY IMBALANCE	IMBL	Economy		\$ 14,289.24	\$ 5,142.80	\$ 19,432.04
MIDWEST INDEPENDENT TRANSMISSION SYSTEM OPERATOR, INC.	MISO	Economy		\$ 3,580.87	\$ 1,288.79	\$ 4,869.66
PJM INTERCONNECTION ASSOCIATION	PJM	Economy		\$ 343,585.30	\$ 123,652.06	\$ 467,237.36
TENASKA POWER SERVICES CO.	TPS	Economy		\$ 18,888.77	\$ 6,798.21	\$ 25,686.98
TENNESSEE VALLEY AUTHORITY	TVA	Economy		\$ 8,949.20	\$ 3,220.89	\$ 12,170.09
KENTUCKY UTILITIES COMPANY	KU	Economy		\$ 7,405,050.15	\$ -	\$ 7,405,050.15
<b>SUBTOTAL</b>			336,244,000	\$ -	\$ 7,970,018.76	\$ 228,832.04
<b>TOTAL SALES</b>			<u>336,244,000</u>	<u>\$ -</u>	<u>\$ 7,970,018.76</u>	<u>\$ 228,832.04</u>

Energy Imbalance is used to supply energy for mismatch between scheduled delivery and actual loads that have occurred over an hour.





Louisville Gas and Electric Company

Power Transaction Schedule

Month Ended: April-30-2012

COMPANY	Type of Transaction	KWH	Billing Components				
			Demand(\$)	Fuel Charges(\$)	Other Charges(\$)	Total Charges(\$)	
<b>Sales</b>							
AMERICAN ELECTRIC POWER SERVICE CORP.	AEP	Economy		\$ 13,537.02	\$ 3,762.98	\$ 17,300.00	
CARGILL- ALLIANT, LLC	CARG	Economy		\$ 15,532.36	\$ 4,317.64	\$ 19,850.00	
EDF TRADING	EDF	Economy		\$ 1,239.46	\$ 344.54	\$ 1,584.00	
ETC ENDURE	ETC	Economy	1,734,000	\$ 47,802.10	\$ 13,287.90	\$ 61,090.00	
ILLINOIS MUNICIPAL ELECTRIC AGENCY	IMEA	Economy	270,000	\$ 7,327.75	\$ 14,358.58	\$ 21,686.33	
INDIANA MUNICIPAL POWER AGENCY	IMPA	Economy	782,000	\$ 23,388.43	\$ 18,753.86	\$ 42,142.29	
ENERGY IMBALANCE	IMBL	Economy	730,000	\$ 21,119.17	\$ 5,870.65	\$ 26,989.82	
MIDWEST INDEPENDENT TRANSMISSION SYSTEM OPERATOR, INC.	MISO	Economy	1,088,000	\$ 32,408.28	\$ 9,008.76	\$ 41,417.04	
PJM INTERCONNECTION ASSOCIATION	PJM	Economy	10,277,000	\$ 275,682.11	\$ 76,633.33	\$ 352,315.44	
TENASKA POWER SERVICES CO.	TPS	Economy	1,350,000	\$ 37,089.87	\$ 10,310.13	\$ 47,400.00	
TENNESSEE VALLEY AUTHORITY	TVA	Economy	1,500,000	\$ 56,339.03	\$ 15,660.97	\$ 72,000.00	
KENTUCKY UTILITIES COMPANY	KU	Economy	439,815,000	\$ 10,178,013.85	\$ -	\$ 10,178,013.85	
SUBTOTAL			458,690,000	\$ -	\$ 10,709,479.43	\$ 172,309.34	\$ 10,881,788.77
<b>TOTAL SALES</b>			<b>458,690,000</b>	<b>\$ -</b>	<b>\$ 10,709,479.43</b>	<b>\$ 172,309.34</b>	<b>\$ 10,881,788.77</b>

Energy Imbalance is used to supply energy for mismatch between scheduled delivery and actual loads that have occurred over an hour.



**LOUISVILLE GAS AND ELECTRIC COMPANY**

**Response to Information Requested in Appendix of  
Commission's Order Dated August 22, 2012**

**Case No. 2012-00321**

**Question No. 7**

**Witness: David L. Tummonds**

Q-7. List LG&E's scheduled, actual, and forced outages from November 1, 2011 through April 30, 2012.

A-7. See attached.

Louisville Gas & Electric Company  
 Cane Run Unit #4 - Coal - 155 MW  
 In-service May 1962  
 November 2011 through April 2012

Schedule vs Actual

MONTH	MAINTENANCE				HOURS OF DURATION			REASON FOR DEVIATION FROM SCHEDULED MAINTENANCE OR REASON FOR FORCED OUTAGE AS APPROPRIATE
	Scheduled		Actual		Scheduled	Forced	Actual	
	FROM	TO	FROM	TO				
November	S	11/4/2011 22:42	11/6/2011 3:23	11/4/2011 22:42	11/6/2011 3:23	28:41	28:41	Furnace wall leak.
December	No outages > or = 6 hours							
January	S	1/28/2012 0:00	→	1/27/2012 21:29	→	96:00	98:31	Major turbine overhaul.
February	S	→	→	→	→	696:00	696:00	" " "
March	S	→	3/25/2012 15:00		3/7/2012 11:11	591:00	155:11	" " "
	S	3/9/2012 21:43	3/10/2012 16:16	3/9/2012 21:43	3/10/2012 16:16	18:33	18:33	First reheater leak.
	S	3/14/2012 22:27	3/15/2012 22:02	3/14/2012 22:27	3/15/2012 22:02	23:35	23:35	Turbine control maintenance.
	F			3/15/2012 22:02	3/16/2012 16:25	18:23		Wet scrubber.
	S	3/28/2012 12:29	→	3/28/2012 12:29	→	83:31	83:31	Turbine control maintenance.
April	S	→	4/1/2012 23:40	→	4/1/2012 23:40	23:40	23:40	" " "
	F			4/10/2012 21:36	4/12/2012 3:56	30:20		Wet scrubber.
	S	4/27/2012 20:50	4/28/2012 23:50	4/27/2012 20:50	4/28/2012 23:50	27:00	27:00	Condenser tube leak.

Report dates of forced outage in columns headed Actual

Louisville Gas & Electric Company  
 Cane Run Unit #5 - Coal - 168 MW  
 In-service May 1966  
 November 2011 through April 2012

Schedule vs Actual

MONTH	MAINTENANCE				HOURS OF DURATION			REASON FOR DEVIATION FROM SCHEDULED MAINTENANCE OR REASON FOR FORCED OUTAGE AS APPROPRIATE
	Scheduled		Actual		Scheduled	Forced	Actual	
	FROM	TO	FROM	TO				
November	F		11/11/2011 8:07	11/12/2011 12:20	28:13			First reheater leak.
December	F		12/18/2011 10:36	12/21/2011 2:53	64:17			Economizer leak.
January	S	1/7/2012 7:40	1/7/2012 15:45	1/7/2012 7:40	1/7/2012 15:45	8:05	8:05	Feedwater valve leak.
	F		1/29/2012 23:40	1/31/2012 13:07	37:27			Burner management system.
February	No outages > or = 6 hours							
March	F		3/2/2012 17:43	3/4/2012 11:31	41:48			Service water leak.
	S	3/22/2012 21:49	3/23/2012 10:40	3/22/2012 21:49	3/23/2012 10:40	12:51	12:51	First reheater leak.
	F		3/26/2012 22:43	3/27/2012 10:52	12:09			Circulating water pump.
April	S	4/18/2012 13:57	4/20/2012 8:05	4/18/2012 13:57	4/20/2012 8:05	42:08	42:08	Boiler tube leak.
	F		4/22/2012 8:50	4/23/2012 23:46	38:56			First reheater leak.

Louisville Gas & Electric Company  
 Cane Run Unit #6 - Coal - 240 MW  
 In-service May 1969  
 November 2011 through April 2012

Schedule vs Actual

MONTH	MAINTENANCE				HOURS OF DURATION			REASON FOR DEVIATION FROM SCHEDULED MAINTENANCE OR REASON FOR FORCED OUTAGE AS APPROPRIATE
	Scheduled		Actual		Scheduled	Forced	Actual	
	FROM	TO	FROM	TO				
November	No outages > or = 6 hours							
December	F		12/18/2011 9:44	12/19/2011 6:47	21:03			Boiler tube leak.
January	No outages > or = 6 hours							
February	S	2/25/2012 0:00	→	2/24/2012 20:37	→	120:00	123:23	Boiler chemical cleaning.
March	S	→	3/18/2012 15:00	→	3/16/2012 14:45	423:00	374:45	" " "
	F			3/16/2012 17:18	3/17/2012 13:25	20:07		Boiler circulating water pump.
April	No outages > or = 6 hours							

Report dates of forced outage in columns headed Actual

Louisville Gas & Electric Company  
 Mill Creek Unit #1 - Coal - 303 MW  
 In-service August 1972  
 November 2011 through April 2012

Schedule vs Actual

MONTH	MAINTENANCE				HOURS OF DURATION			REASON FOR DEVIATION FROM SCHEDULED MAINTENANCE OR REASON FOR FORCED OUTAGE AS APPROPRIATE
	Scheduled		Actual		Scheduled	Forced	Actual	
	FROM	TO	FROM	TO				
November	S	11/5/2011 23:04	11/6/2011 22:40	11/5/2011 23:04	11/6/2011 22:40	23:36	23:36	Boiler tube leak.
December	No outages > or = 6 hours							
January	No outages > or = 6 hours							
February	S	2/14/2012 12:45	2/15/2012 11:24	2/14/2012 12:45	2/15/2012 11:24	22:39	22:39	Boiler blowdown valve replacement.
March	S	3/10/2012 0:00	3/18/2012 15:00	3/13/2012 22:24	3/18/2012 7:24	207:00	105:00	Air heater wash.
April	S	4/26/2012 8:55	4/26/2012 20:05	4/26/2012 8:55	4/26/2012 20:05	11:10	11:10	Deaerator heater.

Report dates of forced outage in columns headed Actual

Louisville Gas & Electric Company  
 Mill Creek Unit #2 - Coal - 301 MW  
 In-service July 1974  
 November 2011 through April 2012

Schedule vs Actual

MONTH	MAINTENANCE				HOURS OF DURATION			REASON FOR DEVIATION FROM SCHEDULED MAINTENANCE OR REASON FOR FORCED OUTAGE AS APPROPRIATE
	Scheduled		Actual		Scheduled	Forced	Actual	
	FROM	TO	FROM	TO				
November	S	11/25/2011 9:27	11/28/2011 6:36	11/25/2011 9:27	11/28/2011 6:36	69:09	69:09	Air heater wash.
December	F			12/5/2011 0:40	12/5/2011 14:38		13:58	Condenser vacuum.
	F			12/13/2011 20:00	12/15/2011 4:35		32:35	First reheater leak.
	S	12/21/2011 11:50	12/22/2011 20:59	12/21/2011 11:50	12/22/2011 20:59	33:09	33:09	Condenser tube leak.
January	F			1/19/2012 20:21	1/21/2012 10:07		37:46	Boiler tube leak.
February	S	2/11/2012 0:00	—————>	2/11/2012 0:01	—————>	456:00	455:59	Major boiler overhaul.
March	S	—————>	—————>	—————>	—————>	744:00	744:00	" " "
April	S	—————>	4/8/2012 15:00	—————>	4/25/2012 11:16	183:00	587:16	" " "

Report dates of forced outage in columns headed Actual



Louisville Gas & Electric Company  
 Mill Creek Unit #3 - Coal - 391 MW  
 In-service August 1978  
 November 2011 through April 2012

Schedule vs Actual

MONTH	MAINTENANCE				HOURS OF DURATION			REASON FOR DEVIATION FROM SCHEDULED MAINTENANCE OR REASON FOR FORCED OUTAGE AS APPROPRIATE	
	Scheduled		Actual		Scheduled	Forced	Actual		
	FROM	TO	FROM	TO					
November	S	11/19/2011 1:54	11/21/2011 20:34	11/19/2011 1:54	11/21/2011 20:34	66:40		66:40	Superheater leak.
December	S	12/20/2011 9:34	12/21/2011 9:43	12/20/2011 9:34	12/21/2011 9:43	24:09		24:09	Condenser tube leak.
January	S	1/21/2012 0:00	1/29/2012 15:00	1/20/2012 23:43	1/28/2012 14:16	207:00		182:33	Minor boiler overhaul.
	F			1/28/2012 18:25	1/29/2012 1:24		6:59		Deaerator heater.
February	No outages > or = 6 hours								
March	F			3/12/2012 7:45	3/12/2012 16:30		8:45		Cooling tower pump.
April	S	4/17/2012 11:14	4/18/2012 12:12	4/17/2012 11:14	4/18/2012 12:12	24:58		24:58	Condenser tube and water box cleaning.

Report dates of forced outage in columns headed Actual

Schedule vs Actual

MONTH	MAINTENANCE				HOURS OF DURATION			REASON FOR DEVIATION FROM SCHEDULED MAINTENANCE OR REASON FOR FORCED OUTAGE AS APPROPRIATE
	Scheduled		Actual		Scheduled	Forced	Actual	
	FROM	TO	FROM	TO				
November	F		11/5/2011 12:09	11/5/2011 20:24	8:15			Generator aux pressure.
	F		11/5/2011 20:24	11/9/2011 16:39	92:15			Main steam safety valve.
December	S	12/14/2011 23:22	12/16/2011 8:23	12/14/2011 23:22	12/16/2011 8:23	33:01	33:01	Boiler tube leak.
January	F		1/7/2012 0:05	1/7/2012 9:53	9:48			Turbine reheat stop valve.
February	F		2/6/2012 16:11	2/6/2012 22:30	6:19			Generator voltage.
	F		2/8/2012 8:08	2/10/2012 10:13	50:05			Second superheater leak.
	S	2/21/2012 14:19	2/24/2012 5:39	2/21/2012 14:19	2/24/2012 5:39	63:20	63:20	Condenser tube leak.
	F		2/24/2012 5:39	2/24/2012 11:50	6:11			Generator metering.
March	F		3/7/2012 8:03	3/8/2012 20:12	36:09			Second superheater leak.
	S	3/8/2012 20:12	3/9/2012 12:42	3/8/2012 20:12	3/9/2012 12:42	16:30	16:30	Superheater inspection.
	F		3/18/2012 9:12	3/21/2012 13:03	75:51			Second reheater leak.
	F		3/25/2012 9:52	3/27/2012 11:36	49:44			Second superheater leak.
April	F		4/2/2012 17:48	4/4/2012 9:49	40:01			Second superheater leak.
	F		4/5/2012 22:06	4/8/2012 9:51	59:45			Second superheater leak.
	F		4/14/2012 10:52	4/16/2012 6:10	43:18			Superheater leak.
	S	4/28/2012 0:00	—————>	4/28/2012 0:01	—————>	72:00	71:59	Major boiler overhaul.

Report dates of forced outage in columns headed Actual

Louisville Gas & Electric Company  
 Trimble County Unit #1 - Coal - 383 MW (75% ownership share of 511 MW)  
 In-service December 1990  
 November 2011 through April 2012

Schedule vs Actual

MONTH	MAINTENANCE				HOURS OF DURATION			REASON FOR DEVIATION FROM SCHEDULED MAINTENANCE OR REASON FOR FORCED OUTAGE AS APPROPRIATE
	Scheduled		Actual		Scheduled	Forced	Actual	
	FROM	TO	FROM	TO				
November	S	→	11/20/2011 15:00	→	11/18/2011 18:30	471:00	426:30	Minor turbine overhaul.
	F			11/21/2011 13:46	11/23/2011 3:46	38:00		Turbine main stop valve testing.
	F			11/23/2011 3:46	11/23/2011 12:39	8:53		Generator voltage.
	F			11/27/2011 14:09	→	81:51		Pulverizer fire.
December	F			→	12/1/2011 10:33	10:33		" "
	F			12/11/2011 8:38	12/12/2011 12:40	28:02		Boiler water condition.
	F			12/12/2011 12:40	12/12/2011 22:56	10:16		Feedwater pump drive motor.
	F			12/15/2011 10:05	12/15/2011 22:54	12:49		Waterwall tube leak.
January	No outages > or = 6 hours							
February	S	2/16/2012 23:57	2/20/2012 4:29	2/16/2012 23:57	2/20/2012 4:29	76:32	76:32	Turbine valves.
March	S	3/10/2012 0:33	3/11/2012 3:10	3/10/2012 0:33	3/11/2012 3:10	26:37	26:37	Boiler tube leak.
	F			3/11/2012 3:10	3/11/2012 9:17	6:07		Feedwater pump drive motor.
April	S	4/20/2012 12:07	4/23/2012 0:34	4/20/2012 12:07	4/23/2012 0:34	60:27	60:27	Air heater wash.

Report dates of forced outage in columns headed Actual

Louisville Gas & Electric Company  
 Trimble County Unit #2 - Coal - 549 MW (75% ownership share of 732 MW; 19% ownership of 549 MW)  
 In-service January 2011  
 November 2011 through April 2012

Schedule vs Actual

MONTH	MAINTENANCE				HOURS OF DURATION			REASON FOR DEVIATION FROM SCHEDULED MAINTENANCE OR REASON FOR FORCED OUTAGE AS APPROPRIATE	
	Scheduled		Actual		Scheduled	Forced	Actual		
	FROM	TO	FROM	TO					
November	S	11/4/2011 0:02	11/7/2011 12:39	11/4/2011 0:02	11/7/2011 12:39	84:37		84:37	Induced draft fan.
	F			11/16/2011 18:04	11/17/2011 9:19		15:15		Service air dryer valve.
December	S	12/16/2011 4:53	12/20/2011 12:51	12/16/2011 4:53	12/20/2011 12:51	103:58		103:58	Air heater wash.
January	F			1/7/2012 13:26	1/11/2012 20:18		102:52		First superheater leak.
	F			1/12/2012 0:47	1/12/2012 8:32		7:45		Turbine exhaust.
	F			1/12/2012 9:08	1/12/2012 17:42		8:34		Feedwater pump.
February	No outages > or = 6 hours								
March	S	3/24/2012 0:00	→	3/23/2012 23:31	→	192:00		192:29	Boiler outage.
April	S	→	→	→	→	720:00		720:00	" "

Report dates of forced outage in columns headed Actual

Louisville Gas & Electric Company  
 E. W. Brown 5 - Gas CT - 112 MW (jointly owned with KU)  
 In-service June 2001  
 November 2011 through April 2012

Schedule vs. Actual

MONTH	MAINTENANCE				HOURS OF DURATION			REASON FOR DEVIATION FROM SCHEDULED MAINTENANCE OR REASON FOR FORCED OUTAGE AS APPROPRIATE
	Scheduled		Actual		Scheduled	Forced	Actual	
	FROM	TO	FROM	TO				
November	No Outages > or = 6 Hours							
December	No Outages > or = 6 Hours							
January	S	1/9/2012 6:30	1/9/2012 13:18	1/9/2012 6:30	1/9/2012 13:18	6:48	6:48	Turbine control system upgrade.
	F			1/13/2012 14:20	1/14/2012 15:37	25:17		Turbine control system logic.
	S	1/18/2012 6:30	1/18/2012 15:53	1/18/2012 6:30	1/18/2012 15:53	9:23	9:23	Meter calibrations.
February	No Outages > or = 6 Hours							
March	No Outages > or = 6 Hours							
April	No Outages > or = 6 Hours							

Report dates of forced outage in columns headed Actual

Louisville Gas & Electric Company  
 E. W. Brown 6 - Gas CT - 146 MW (jointly owned with KU)  
 In-service August 1999  
 November 2011 through April 2012

Schedule vs. Actual

MONTH	MAINTENANCE				HOURS OF DURATION			REASON FOR DEVIATION FROM SCHEDULED MAINTENANCE OR REASON FOR FORCED OUTAGE AS APPROPRIATE
	Scheduled		Actual		Scheduled	Forced	Actual	
	FROM	TO	FROM	TO				
November	F			11/10/2011 22:23	11/11/2011 10:30		12:07	Exciter breaker.
December	S	12/21/2011 7:45	12/21/2011 16:46	12/21/2011 7:45	12/21/2011 16:46	9:01	9:01	Battery load test.
	S	12/30/2011 6:00	12/31/2011 2:00	12/30/2011 6:00	12/31/2011 2:00	20:00	20:00	Lube oil system calibrations.
January	No Outages > or = 6 Hours							
February	S	2/9/2012 9:20	2/10/2012 0:00	2/9/2012 9:20	2/10/2012 0:00	14:40	14:40	Lube oil system calibrations.
	S	2/25/2012 0:00	→	2/24/2012 5:50	→	120:00	138:10	Boroscope inspection.
March	S	→	3/4/2012 15:00	→	3/2/2012 10:47	87:00	34:47	" "
	F			3/9/2012 6:54	3/9/2012 12:58		6:04	Fire detection and extinguishing system.
April	No Outages > or = 6 Hours							

Report dates of forced outage in columns headed Actual

Louisville Gas & Electric Company  
 E. W. Brown 7 - Gas CT - 146 MW (jointly owned with KU)  
 In-service August 1999  
 November 2011 through April 2012

Schedule vs. Actual

MONTH	MAINTENANCE				HOURS OF DURATION			REASON FOR DEVIATION FROM SCHEDULED MAINTENANCE OR REASON FOR FORCED OUTAGE AS APPROPRIATE
	Scheduled		Actual		Scheduled	Forced	Actual	
	FROM	TO	FROM	TO				
November	S	→	11/13/2011 15:00	→	11/10/2011 8:33	303:00	224:33	Turbine inspection.
December	No Outages > or = 6 Hours							
January	No Outages > or = 6 Hours							
February	No Outages > or = 6 Hours							
March	No Outages > or = 6 Hours							
April	S		4/23/2012 8:30		4/24/2012 3:06	18:36	18:36	Lube oil system seal.

Report dates of forced outage in columns headed Actual

Louisville Gas & Electric Company  
 Cane Run Unit #11 - Gas CT - 14 MW  
 In-service June 1968  
 November 2011 through April 2012

Schedule vs Actual

MONTH	MAINTENANCE				HOURS OF DURATION			REASON FOR DEVIATION FROM SCHEDULED MAINTENANCE OR REASON FOR FORCED OUTAGE AS APPROPRIATE
	Scheduled		Actual		Scheduled	Forced	Actual	
	FROM	TO	FROM	TO				
November	F			—————>	11/22/2011 7:20		511:20	Oil fire.
December	S	12/28/2011 0:00	12/28/2011 16:17	12/28/2011 0:00	12/28/2011 16:17	16:17	16:17	Oil flow meter.
	S	12/29/2011 10:54	12/29/2011 16:58	12/29/2011 10:54	12/29/2011 16:58	6:04	6:04	Oil flow meter.
January	F			1/23/2012 15:50	1/24/2012 12:00		20:10	Battery and charger system.
February		No outages > or = 6 hours						
March		No outages > or = 6 hours						
April		No outages > or = 6 hours						

Report dates of forced outage in columns headed Actual



Louisville Gas & Electric Company  
Paddys Run Unit #11 - Gas CT - 12 MW  
In-service June 1968  
November 2011 through April 2012

Schedule vs Actual

MONTH	MAINTENANCE				HOURS OF DURATION			REASON FOR DEVIATION FROM SCHEDULED MAINTENANCE OR REASON FOR FORCED OUTAGE AS APPROPRIATE
	Scheduled		Actual		Scheduled	Forced	Actual	
	FROM	TO	FROM	TO				
November	S	11/3/2011 14:55	→	11/3/2011 14:55	→	657:05	657:05	Distributive control system upgrade.
December	S	→	12/30/2011 19:55	→	12/30/2011 19:55	715:55	715:55	" " " "
	S	12/30/2011 20:21	→	12/30/2011 20:21	→	27:39	27:39	Distributive control system upgrade.
January	S	→	1/9/2012 10:19	→	1/9/2012 10:19	202:19	202:19	" " " "
	S	1/9/2012 15:31	1/10/2012 14:28	1/9/2012 15:31	1/10/2012 14:28	22:57	22:57	Distributive control system upgrade.
	S	1/10/2012 14:36	1/11/2012 14:53	1/10/2012 14:36	1/11/2012 14:53	24:17	24:17	Distributive control system upgrade.
	S	1/11/2012 15:02	1/16/2012 13:25	1/11/2012 15:02	1/16/2012 13:25	118:23	118:23	Distributive control system upgrade.
February	S	2/8/2012 13:04	2/20/2012 9:07	2/8/2012 13:04	2/20/2012 9:07	284:03	284:03	Gas line maintenance.
March	S	3/20/2012 8:05	→	3/20/2012 8:05	→	279:55	279:55	Gas line outage.
April	S	→	4/12/2012 10:30	→	4/12/2012 10:30	274:30	274:30	" " "
	F			4/18/2012 13:30	4/20/2012 8:40		43:10	Generator synchronization equipment.
	F			4/24/2012 9:13	4/25/2012 10:16		25:03	Gas line outage.

Louisville Gas & Electric Company  
 Paddys Run Unit #12 - Gas CT - 23 MW  
 In-service July 1968  
 November 2011 through April 2012

Schedule vs Actual

MONTH	MAINTENANCE				HOURS OF DURATION			REASON FOR DEVIATION FROM SCHEDULED MAINTENANCE OR REASON FOR FORCED OUTAGE AS APPROPRIATE
	Scheduled		Actual		Scheduled	Forced	Actual	
	FROM	TO	FROM	TO				
November	F			—————>	—————>	720:00		Starting system.
December	F			—————>	12/20/2011 16:23	472:23		" "
January		No outages > or = 6 hours						
February	S	2/8/2012 13:04	2/20/2012 9:07	2/8/2012 13:04	2/20/2012 9:07	284:03	284:03	Gas line maintenance.
March	S	3/20/2012 8:05	—————>	3/20/2012 8:05	—————>	279:55	279:55	Gas line outage.
April	S	—————>	4/12/2012 10:30	—————>	4/12/2012 10:30	274:30	274:30	" " "

Report dates of forced outage in columns headed Actual

Louisville Gas & Electric Company  
 Paddys Run Unit # 13 - Gas CT - 147 MW (jointly owned with KU)  
 In-service June 2001  
 November 2011 through April 2012

Schedule vs Actual

MONTH	MAINTENANCE				HOURS OF DURATION			REASON FOR DEVIATION FROM SCHEDULED MAINTENANCE OR REASON FOR FORCED OUTAGE AS APPROPRIATE
	Scheduled		Actual		Scheduled	Forced	Actual	
	FROM	TO	FROM	TO				
November	S	11/7/2011 6:21	11/21/2011 12:51	11/7/2011 6:21	11/21/2011 12:51	342:30	342:30	Gas line outage.
December	No outages > or = 6 hours							
January	S	1/30/2012 8:40	—————>	1/30/2012 8:40	—————>	39:20	39:20	Gas line outage.
February	S	—————>	2/8/2012 13:04	—————>	2/8/2012 13:04	181:04	181:04	" " "
March	S	3/20/2012 8:05	—————>	3/20/2012 8:05	—————>	279:55	279:55	Gas line outage.
April	S	—————>	4/12/2012 10:30	—————>	4/12/2012 10:30	274:30	274:30	" " "

Louisville Gas & Electric Company  
 Trimble County Unit #5 - Gas CT - 157 MW (jointly owned with KU)  
 In-service May 2002  
 November 2011 through April 2012

Schedule vs Actual

MONTH	MAINTENANCE				HOURS OF DURATION			REASON FOR DEVIATION FROM SCHEDULED MAINTENANCE OR REASON FOR FORCED OUTAGE AS APPROPRIATE	
	Scheduled		Actual		Scheduled	Forced	Actual		
	FROM	TO	FROM	TO					
November	S	11/8/2011 8:47	11/8/2011 22:58	11/8/2011 8:47	11/8/2011 22:58	14:11		14:11	Conductors and buses.
	S	11/12/2011 4:44	11/12/2011 23:20	11/12/2011 4:44	11/12/2011 23:20	18:36		18:36	Boroscope inspection.
December	F			12/10/2011 11:39	12/12/2011 20:46		57:07		Conductors and buses.
January	F			1/12/2012 21:21	1/13/2012 5:10		7:49		Starting system.
	S	1/23/2012 1:05	1/23/2012 23:00	1/23/2012 1:05	1/23/2012 23:00	21:55		21:55	Conductors and buses.
February	S	2/3/2012 11:30	2/3/2012 21:15	2/3/2012 11:30	2/3/2012 21:15	9:45		9:45	Conductors and buses.
March	S	3/24/2012 4:00	3/30/2012 17:30	3/24/2012 4:00	3/30/2012 17:30	157:30		157:30	Gas turbine vibration.
April		No outages > or = 6 hours							

Report dates of forced outage in columns headed Actual

Louisville Gas & Electric Company  
 Trimble County Unit #6 - Gas CT - 157 MW (jointly owned with KU)  
 In-service May 2002  
 November 2011 through April 2012

Schedule vs Actual

MONTH	MAINTENANCE				HOURS OF DURATION			REASON FOR DEVIATION FROM SCHEDULED MAINTENANCE OR REASON FOR FORCED OUTAGE AS APPROPRIATE	
	Scheduled		Actual		Scheduled	Forced	Actual		
	FROM	TO	FROM	TO					
November	S	11/8/2011 8:47	11/8/2011 22:58	11/8/2011 8:47	11/8/2011 22:58	14:11		14:11	Conductors and buses.
	S	11/11/2011 3:02	11/11/2011 22:00	11/11/2011 3:02	11/11/2011 22:00	18:58		18:58	Boroscope inspection.
December	F			12/10/2011 11:39	12/13/2011 16:59		77:20		Conductors and buses.
January	F			1/12/2012 21:21	1/13/2012 5:10		7:49		Starting system.
	S	1/23/2012 1:05	1/23/2012 23:00	1/23/2012 1:05	1/23/2012 23:00	21:55		21:55	Conductors and buses.
	S	1/27/2012 5:17	1/27/2012 16:06	1/27/2012 5:17	1/27/2012 16:06	10:49		10:49	Hydraulic oil system leak.
February	S	2/3/2012 11:30	2/3/2012 21:15	2/3/2012 11:30	2/3/2012 21:15	9:45		9:45	Conductors and buses.
March	S	3/23/2012 6:35	3/23/2012 14:45	3/23/2012 6:35	3/23/2012 14:45	8:10		8:10	Exciter transformer.
April		No outages > or = 6 hours							

Report dates of forced outage in columns headed Actual

Louisville Gas & Electric Company  
 Trimble County Unit #7 - Gas CT - 157 MW (jointly owned with KU)  
 In-service June 2004  
 November 2011 through April 2012

Schedule vs Actual

MONTH	MAINTENANCE				HOURS OF DURATION			REASON FOR DEVIATION FROM SCHEDULED MAINTENANCE OR REASON FOR FORCED OUTAGE AS APPROPRIATE
	Scheduled		Actual		Scheduled	Forced	Actual	
	FROM	TO	FROM	TO				
November	S	11/8/2011 4:00	11/9/2011 1:25	11/8/2011 4:00	11/9/2011 1:25	21:25	21:25	Boroscope inspection.
December	No outages > or = 6 hours							
January	S	1/23/2012 1:05	1/24/2012 19:34	1/23/2012 1:05	1/24/2012 19:34	42:29	42:29	Conductors and buses.
February	F			2/3/2012 6:30	2/3/2012 21:15		14:45	Conductors and buses.
	F			2/22/2012 7:10	2/22/2012 15:00		7:50	Starting system.
	S	2/28/2012 7:12	2/28/2012 16:59	2/28/2012 7:12	2/28/2012 16:59	9:47	9:47	Starting system.
March	S	3/31/2012 0:00	—————>	3/31/2012 3:15	—————>	24:00	20:45	Hot gas path inspection.
April	S	—————>	—————>	—————>	—————>	720:00	720:00	" " " "

Report dates of forced outage in columns headed Actual

Louisville Gas & Electric Company  
 Trimble County Unit #8 - Gas CT - 157 MW (jointly owned with KU)  
 In-service June 2004  
 November 2011 through April 2012

Schedule vs Actual

MONTH	MAINTENANCE				HOURS OF DURATION			REASON FOR DEVIATION FROM SCHEDULED MAINTENANCE OR REASON FOR FORCED OUTAGE AS APPROPRIATE
	Scheduled		Actual		Scheduled	Forced	Actual	
	FROM	TO	FROM	TO				
November	S	11/20/2011 15:00	11/19/2011 9:54	471:00		441:54	Hot gas path inspection.	
December	No outages > or = 6 hours							
January	S	1/25/2012 5:01	1/25/2012 19:45	1/25/2012 5:01	1/25/2012 19:45	14:44	14:44	Conductors and buses.
February	F			2/22/2012 7:10	2/22/2012 15:00		7:50	Starting system.
	S	2/28/2012 7:12	2/28/2012 16:59	2/28/2012 7:12	2/28/2012 16:59	9:47	9:47	Starting system.
March	S	3/13/2012 5:39	3/13/2012 13:30	3/13/2012 5:39	3/13/2012 13:30	7:51	7:51	Transformer leak.
April	S	4/6/2012 9:30	4/8/2012 10:20	4/6/2012 9:30	4/8/2012 10:20	48:50	48:50	Starting system.
	F			4/23/2012 6:26	4/23/2012 15:37		9:11	Lube oil cooler.

Report dates of forced outage in columns headed Actual

Louisville Gas & Electric Company  
 Trimble County Unit #9 - Gas CT - 157 MW (jointly owned with KU)  
 In-service July 2004  
 November 2011 through April 2012

Schedule vs Actual

MONTH	MAINTENANCE				HOURS OF DURATION			REASON FOR DEVIATION FROM SCHEDULED MAINTENANCE OR REASON FOR FORCED OUTAGE AS APPROPRIATE	
	Scheduled		Actual		Scheduled	Forced	Actual		
	FROM	TO	FROM	TO					
November	S	11/10/2011 2:45	11/10/2011 23:55	11/10/2011 2:45	11/10/2011 23:55	21:10		21:10	Boroscope inspection.
	F			11/11/2011 2:15	11/11/2011 13:09		10:54		Lube oil system leak.
	F			11/11/2011 22:06	11/12/2011 6:43		8:37		Circuit breakers.
	S	11/21/2011 7:05	11/23/2011 16:45	11/21/2011 7:05	11/23/2011 16:45	57:40		57:40	Circuit breaker maintenance.
December	S	12/19/2011 7:14	12/20/2011 16:53	12/19/2011 7:14	12/20/2011 16:53	33:39		33:39	Generator main leads.
January	No outages > or = 6 hours								
February	No outages > or = 6 hours								
March	S	3/22/2012 4:00	3/22/2012 15:00	3/22/2012 4:00	3/22/2012 15:00	11:00		11:00	Circuit breaker maintenance.
April	No outages > or = 6 hours								

Report dates of forced outage in columns headed Actual



Louisville Gas & Electric Company  
 Trimble County Unit #10 - Gas CT - 157 MW (jointly owned with KU)  
 In-service July 2004  
 November 2011 through April 2012

Schedule vs Actual

MONTH	MAINTENANCE				HOURS OF DURATION			REASON FOR DEVIATION FROM SCHEDULED MAINTENANCE OR REASON FOR FORCED OUTAGE AS APPROPRIATE
	Scheduled		Actual		Scheduled	Forced	Actual	
	FROM	TO	FROM	TO				
November	S	11/9/2011 4:11	11/10/2011 1:08	11/9/2011 4:11	11/10/2011 1:08	20:57	20:57	Boroscope inspection.
December	S	12/8/2011 7:00	12/10/2011 20:58	12/8/2011 7:00	12/10/2011 20:58	61:58	61:58	Conductors and buses.
January	F			1/12/2012 7:40	1/12/2012 18:34		10:54	Turbine stop valves.
February		No outages > or = 6 hours						
March	F			3/3/2012 19:24	3/4/2012 1:35		6:11	Lightning.
April		No outages > or = 6 hours						

Report dates of forced outage in columns headed Actual

Louisville Gas & Electric Company  
 Zorn Unit #1 - Gas CT - 14 MW  
 In-service May 1969  
 November 2011 through April 2012

Schedule vs Actual

MONTH	MAINTENANCE				HOURS OF DURATION			REASON FOR DEVIATION FROM SCHEDULED MAINTENANCE OR REASON FOR FORCED OUTAGE AS APPROPRIATE
	Scheduled		Actual		Scheduled	Forced	Actual	
	FROM	TO	FROM	TO				

November	F			—————>	11/16/2011 14:17	374:17		Thermocouple.
----------	---	--	--	--------	------------------	--------	--	---------------

December No outages > or = 6 hours

January No outages > or = 6 hours

February No outages > or = 6 hours

March No outages > or = 6 hours

April No outages > or = 6 hours



**LOUISVILLE GAS AND ELECTRIC COMPANY**

**Response to Information Requested in Appendix of  
Commission's Order Dated August 22, 2012**

**Case No. 2012-00321**

**Question No. 8**

**Witness: Mike Dotson**

Q-8. List all existing fuel contracts categorized as long-term (i.e., one year or more in length). Provide the following information for each contract:

- a. Supplier's name and address;
- b. Name and location of production facility;
- c. Date when contract was executed;
- d. Duration of contract;
- e. Date(s) of each contract revision, modification, or amendment;
- f. Annual tonnage requirements;
- g. Actual annual tonnage received since the contract's inception;
- h. Percent of annual requirements received during the contract's term;
- i. Base price in dollars per ton;
- j. Total amount of price escalations to date in dollars per ton; and
- k. Current price paid for coal under the contract in dollars per ton (i + j)

A-8. See attached.

A. NAME/ADDRESS: Alliance Coal, LLC / J09002  
1717 South Boulder Av., Suite 400  
Tulsa, Oklahoma 74119-4886

B. PRODUCTION FACILITY:  
OPERATOR River View Coal, LLC  
MINE River View Mine  
LOCATION Union County, Kentucky

C. CONTRACT EXECUTED DATE: November 10, 2008

D. CONTRACT DURATION: November 3, 2008 – December 31, 2015

E. CONTRACT AMENDMENTS: Amendment No. 1, effective May 1, 2010  
Amending Barge Delivery and adding Barge  
Shifting Fee.

F. ANNUAL TONNAGE REQUIREMENTS:

2010	969,072 tons
	(includes FM of 30,928 tons)
2011	2,000,000 tons
2012	2,000,000 tons
2013	2,000,000 tons
2014	2,000,000 tons
2015	2,000,000 tons

G. ACTUAL TONNAGE RECEIVED:

	<u>LG&amp;E</u>	<u>KU</u>
2010	525,414 tons	443,658 tons
2011	1,177,540 tons	771,648 tons
2012	660,372 tons	83,669 tons
	(through 4/30/12)	

H. PERCENT OF ANNUAL REQUIREMENTS:

2010	100%
2011	97%
2012	37% (through 4/30/12)

I. BASE PRICE (FOB Barge): April 1, 2012 - \$41.00 per ton

J. ESCALATIONS TO DATE: \$8.54 per ton

K. CURRENT CONTRACT PRICE: \$49.54 per ton

A. NAME/ADDRESS: Alliance Coal, LLC / LGE06010  
1717 South Boulder Avenue – Suite 400  
Tulsa, Oklahoma 74119-4886

B. PRODUCTION FACILITY:  
OPERATOR: Hopkins County Coal, Warrior Coal, LLC  
and Webster County Coal, LLC  
MINE: Seller's Mines  
LOCATION: Western Kentucky

C. CONTRACT EXECUTED DATE: December 16, 2005

D. CONTRACT DURATION: January 1, 2006 - December 31, 2011

E. CONTRACT AMENDMENTS: Amendment No. 1 effective September 6, 2006,  
amending payment terms.  
Amendment No. 2 effective January 1, 2007,  
detailing shipping method for tonnage.  
Amendment No. 3 effective March 1, 2007,  
amending payment calculations.  
Amendment No. 4 effective January 1, 2008,  
amending pricing.  
Amendment No. 5 effective January 1, 2009,  
amending pricing and adding Delivery Option 4.  
Amendment No. 6 effective January 1, 2010,  
amending pricing.  
Amendment No. 7 effective January 1, 2011,  
amending pricing.

F. ANNUAL TONNAGE REQUIREMENTS:

2006	Up to 3,500,000 tons (Total with Synfuel Solutions Operating Contract)
2007	Up to 4,000,000 tons (Total with Synfuel Solutions Operating Contract)
2008	through 2011 - 4,000,000 tons per year

G. ACTUAL TONNAGE RECEIVED:

2006	3,472,671 tons
2007	4,021,560 tons
2008	3,930,230 tons
2009	4,040,181 tons
2010	3,942,538 tons
2011	3,954,626 tons

2012 81,646 tons

H. PERCENT OF ANNUAL  
REQUIREMENTS:

2006 99%

2007 100%

2008 98%

2009 100%

2010 99%

2011 99%

2012 carryover tons

I. BASE PRICE:

2006 Delivery Option 1 - \$31.00 per ton  
Delivery Option 2 - \$31.75 per ton  
Delivery Option 3 - \$32.75 per ton  
Synfuel Option - \$29.85 per ton

2007 Delivery Option 1 - \$32.09 per ton  
Delivery Option 2 - \$32.48 per ton  
Delivery Option 3 - \$33.50 per ton  
Synfuel Option - \$30.94 per ton

2008 Delivery Option 1 - \$32.24 per ton  
Delivery Option 2 - \$32.51 per ton  
Delivery Option 3 - \$33.33 per ton

2009 Delivery Option 1 - \$33.80 per ton  
Delivery Option 2 - \$34.21 per ton  
Delivery Option 3 - \$34.97 per ton  
Delivery Option 4 - \$34.86 per ton

2010 Delivery Option 1 - \$36.32 per ton  
Delivery Option 2 - \$36.70 per ton  
Delivery Option 3 - \$37.56 per ton  
Delivery Option 4 - \$37.45 per ton

2011 Delivery Option 1 - \$38.57 per ton  
Delivery Option 2 - \$39.00 per ton  
Delivery Option 3 - \$39.90 per ton  
Delivery Option 4 - \$39.78 per ton

J. ESCALATIONS TO DATE:

None

K. CURRENT CONTRACT PRICE:

Delivery Option 1 - \$38.57 per ton

Delivery Option 2 - \$39.00 per ton

Delivery Option 3 - \$39.90 per ton

Delivery Option 4 - \$39.78 per ton



- A. NAME/ADDRESS: Alliance Coal, LLC / J12007  
1717 South Boulder Av., Suite 400  
Tulsa, Oklahoma 74119-4886
- B. PRODUCTION FACILITY:  
OPERATOR Hopkins County Coal, Warrior Coal and Webster  
County Coal  
MINE Seller's Mines  
LOCATION Western, Kentucky
- C. CONTRACT EXECUTED DATE: December 9, 2011
- D. CONTRACT DURATION: January 1, 2012 – December 31, 2016
- E. CONTRACT AMENDMENTS: Amendment No. 1, effective January 1, 2013  
Amending pricing.
- F. ANNUAL TONNAGE REQUIREMENTS:
- |      |                |
|------|----------------|
| 2012 | 3,000,000 tons |
| 2013 | 3,000,000 tons |
| 2014 | 3,000,000 tons |
| 2015 | 3,000,000 tons |
| 2016 | 3,000,000 tons |
- G. ACTUAL TONNAGE RECEIVED:
- |      |                   |   |
|------|-------------------|---|
|      | <u>LG&amp;E</u>   |   |
| 2012 | 1,034,550 tons    | s |
|      | (through 4/30/12) |   |
- H. PERCENT OF ANNUAL REQUIREMENTS:
- |      |                        |
|------|------------------------|
| 2012 | 103% (through 4/30/12) |
|------|------------------------|
- I. BASE PRICE (FOB Barge):
- |      |   |
|------|---|
| 2012 | - \$47.00 per ton FOB Railcar   |
| 2013 | - \$48.00 per ton FOB Railcar   |
| 2014 | - Pricing for 1.5 Million tons<br>\$49.00 per ton FOB Railcar<br>Pricing for remaining 1.5 Million tons<br>to be negotiated |
| 2015 | - To be negotiated  |
| 2016 | - To be negotiated  |
- J. ESCALATIONS TO DATE: None
- K. CURRENT CONTRACT PRICE: \$47.00 per ton FOB Railcar

A. NAME/ADDRESS: Armstrong Coal Company, Inc / J07032  
407 Brown Road  
Madisonville, Kentucky 42431

B. PRODUCTION FACILITY:  
OPERATOR Armstrong Coal Company, Inc  
MINES Various  
LOCATION Muhlenberg County and Ohio County,  
Kentucky

C. CONTRACT EXECUTED DATE: December 20, 2007

D. CONTRACT DURATION: January 1, 2008 - December 31, 2016

E. CONTRACT AMENDMENTS: Amendment No. 1, effective July 1, 2008  
amending base quantity and modifying  
diesel fuel adjustment to include explosives.  
Amendment No. 2, effective December 22, 2009  
amending term, base quantity, price and  
environmental force majeure.

F. ANNUAL TONNAGE REQUIREMENTS:

2008	600,000 tons
2009	2,200,000 tons
2010	1,800,000 tons
2011 through 2015	- 2,100,000 tons per year
2016	900,000 tons

G. ACTUAL TONNAGE RECEIVED:

	<u>LG&amp;E</u>	<u>KU</u>
2008	511,414 tons	82,623 tons
2009	1,530,482 tons	632,077 tons
2010	1,180,206 tons	657,930 tons
2011	993,296 tons	877,219 tons
2012	318,477 tons	307,160 tons
	(through 4/30/12)	

H. PERCENT OF ANNUAL REQUIREMENTS:

2008	99%
2009	98%
2010	102%
2011	89%
2012	30% (through 4/30/12)

I. BASE PRICE (FOB Barge)

2008	Quality 1 - \$27.31 per ton
	Quality 2 - \$28.30 per ton
2009	Quality 1 - \$27.60 per ton
	Quality 2 - \$28.76 per ton

2011	Quality 1 - \$28.19 per ton Quality 2 - \$29.61 per ton
2012	Quality 1 - \$28.35 per ton Quality 2 - \$29.77 per ton
2013	Quality 1 - \$28.35 per ton Quality 2 - \$29.77 per ton
2014	Quality 1 - \$28.50 per ton Quality 2 - \$29.92 per ton
2015	Quality 1 - \$28.50 per ton Quality 2 - \$29.92 per ton
2016	Quality 1 - \$30.25 per ton Quality 2 - \$31.67 per ton

J. ESCALATIONS TO DATE: \$1.28 per ton

I. CURRENT CONTRACT PRICE: Quality 1 - \$29.63 per ton

A. NAME/ADDRESS: Armstrong Coal Company, Inc / J10009  
407 Brown Road  
Madisonville, Kentucky 42431

B. PRODUCTION FACILITY:  
OPERATOR Armstrong Coal Company, Inc  
MINES Various  
LOCATION Muhlenberg County and Ohio County,  
Kentucky

C. CONTRACT EXECUTED DATE: December 22, 2009

D. CONTRACT DURATION: January 1, 2011 - December 31, 2016

E. CONTRACT AMENDMENTS: None

F. ANNUAL TONNAGE REQUIREMENTS:

2011	1,250,000 tons
2012	1,250,000 tons
2013	1,250,000 tons
2014	750,000 tons
2015	750,000 tons
2016	750,000 tons

G. ACTUAL TONNAGE RECEIVED:

	<u>LG&amp;E</u>	<u>KU</u>
2011	565,386 tons	585,065 tons
2012	204,136 tons (through 4/30/12)	223,526 tons

H. PERCENT OF ANNUAL REQUIREMENTS:

2011	92%
2012	34% (through 4/30/12)

I. BASE PRICE (FOB Barge)

2011	\$42.00 per ton
2012	\$43.50 per ton
2013	\$45.00 per ton

J. ESCALATIONS TO DATE: \$3.44 per ton

I. CURRENT CONTRACT PRICE: \$46.94 per ton

- A. NAME/ADDRESS: COALSALES, LLC / KUF06118-LGE06012-  
J07005-J07006  
701 Market Street  
St. Louis, Missouri 63101
- B. PRODUCTION FACILITY:
- |          |                            |
|----------|----------------------------|
| OPERATOR | Patriot Coal and Ohio Coal |
| MINE     | Patriot and Freedom Mines  |
| LOCATION | Henderson County, Kentucky |
| OPERATOR | Black Beauty Coal Company  |
| MINE     | Somerville Mine            |
| LOCATION | Gibson County, Indiana     |
- C. CONTRACT EXECUTED DATE: May 23, 2006
- D. CONTRACT DURATION: April 1, 2006 – December 31, 2011
- E. CONTRACT AMENDMENTS: Amendment No. 1 effective September 1, 2006.  
Amending payment procedures.  
Amendment No. 2 effective November 20,  
2006, adding coal synfuel.  
Amendment No. 3 effective March 1, 2007.  
Amending payment calculation.  
Amendment No.4 effective July 1, 2007 adding  
tonnage to year 2007.  
Amendment No.5 effective January 1, 2008  
amending term, tonnage and price.  
Amendment No. 6 effective January 1, 2009  
amending term, tonnage and price
- F. ANNUAL TONNAGE REQUIREMENTS:
- |      |                |
|------|----------------|
| 2006 | 937,500 tons   |
| 2007 | 2,000,000 tons |
| 2008 | 1,400,000 tons |
| 2009 | 1,000,000 tons |
| 2010 | 1,000,000 tons |
| 2011 | 1,000,000 tons |

G. ACTUAL TONNAGE RECEIVED:	<u>KU</u>	<u>LGE</u>	
	2006	0 tons	957,654 tons
	2007	225,229 tons	1,770,880 tons
	2008	181,615 tons	1,142,551 tons
	2009	3,106 tons	991,558 tons
	2010	0 tons	962,437 tons
	2011	289,987 tons	732,273 tons
	2012	6,450 tons	12,520 tons

H. PERCENT OF ANNUAL REQUIREMENTS:	2006	102%
	2007	100%
	2008	96%
	2009	99%
	2010	96%
	2011	102%
	2012	carryover tonnage

I. BASE PRICE (FOB Barge):	2006	\$29.95 per ton – Quality A Barge \$30.36 per ton – Quality B Barge
	2007	\$30.60 per ton – Quality A Barge \$31.02 per ton – Quality B Barge
	2008	\$31.60 per ton – Barge
	2009	\$30.41 – Rail (first 750,000 tons) \$36.25 – Rail (next 250,000 tons)
	2010	\$37.25 per ton
	2011	\$39.25 per ton

J. ESCALATIONS TO DATE: \$3.10 per ton

K. CURRENT CONTRACT PRICE: \$42.35 per ton

A. NAME/ADDRESS:	COALSALES, LLC / J12011 701 Market Street St. Louis, Missouri 63101						
B. PRODUCTION FACILITY: OPERATOR	Peabody Midwest Mining, LLC Peabody Wild Boar Mining, LLC						
MINE	Somerville Mine Complex Wild Boar						
LOCATION	Warrick & Gibson Counties, Indiana						
C. CONTRACT EXECUTED DATE:	December 29, 2011						
D. CONTRACT DURATION:	January 1, 2012 – December 31, 2014						
E. CONTRACT AMENDMENTS:	None						
F. ANNUAL TONNAGE REQUIREMENTS:	2012 1,500,000 tons 2013 1,500,000 tons 2014 1,500,000 tons						
G. ACTUAL TONNAGE RECEIVED:	<table border="0" style="width: 100%;"> <tr> <td></td> <td style="text-align: center;"><u>KU</u></td> <td style="text-align: center;"><u>LGE</u></td> </tr> <tr> <td>2012</td> <td>288,236 tons (through 4/30/12)</td> <td>221,431 tons</td> </tr> </table>		<u>KU</u>	<u>LGE</u>	2012	288,236 tons (through 4/30/12)	221,431 tons
	<u>KU</u>	<u>LGE</u>					
2012	288,236 tons (through 4/30/12)	221,431 tons					
H. PERCENT OF ANNUAL REQUIREMENTS:	2012 34% (through 4/30/12)						
I. BASE PRICE:	<table border="0" style="width: 100%;"> <tr> <td>2012</td> <td>\$49.90 per ton – FOB Barge Evansville \$49.11 per ton – FOB Barge Warrick Co. \$44.50 per ton – FOB Railcar</td> </tr> <tr> <td>2013</td> <td>\$52.15 per ton – FOB Barge Evansville \$51.36 per ton – FOB Barge Warrick Co. \$46.75 per ton – FOB Railcar</td> </tr> <tr> <td>2014</td> <td>\$54.15 per ton – FOB Barge Evansville \$53.36 per ton – FOB Barge Warrick Co. \$48.75 per ton – FOB Railcar</td> </tr> </table>	2012	\$49.90 per ton – FOB Barge Evansville \$49.11 per ton – FOB Barge Warrick Co. \$44.50 per ton – FOB Railcar	2013	\$52.15 per ton – FOB Barge Evansville \$51.36 per ton – FOB Barge Warrick Co. \$46.75 per ton – FOB Railcar	2014	\$54.15 per ton – FOB Barge Evansville \$53.36 per ton – FOB Barge Warrick Co. \$48.75 per ton – FOB Railcar
2012	\$49.90 per ton – FOB Barge Evansville \$49.11 per ton – FOB Barge Warrick Co. \$44.50 per ton – FOB Railcar						
2013	\$52.15 per ton – FOB Barge Evansville \$51.36 per ton – FOB Barge Warrick Co. \$46.75 per ton – FOB Railcar						
2014	\$54.15 per ton – FOB Barge Evansville \$53.36 per ton – FOB Barge Warrick Co. \$48.75 per ton – FOB Railcar						
J. ESCALATIONS TO DATE:	\$0.99 per ton – FOB Barge Evansville \$1.38 per ton – FOB Warrick Co. \$0.89 per ton – FOB Railcar						

K. CURRENT CONTRACT PRICE:

\$50.89 per ton – FOB Barge Evansville

\$50.49 per ton – FOB Barge Warrick Co.

\$45.39 per ton – FOB Railcar



A. NAME/ADDRESS:	Consol Energy / J10008 1800 Washington Road Pittsburgh, PA 15241	
B. PRODUCTION FACILITY:		
OPERATOR:	Consolidation Coal Company	
MINES:	Shoemaker	
LOCATION:	Marshall County, WV	
C. CONTRACT EXECUTED DATE:	January 7, 2010	
D. CONTRACT DURATION:	June 1, 2010 - December 31, 2014	
E. CONTRACT AMENDMENTS:	None	
F. ANNUAL TONNAGE REQUIREMENTS	2010	250,000 tons
	2011	1,210,478 tons (includes FM of 39,522 tons)
	2012	0 tons
	2013	0 tons
	2014	0 tons
G. ACTUAL TONNAGE: RECEIVED:		
		<u>KU</u> <u>LGE</u>
	2010	142,822 tons    205,534 tons
	2011	956,553 tons    134,546 tons
	2012	110,947 tons
H. PERCENT OF ANNUAL REQUIREMENTS:	2010	139%
	2011	90%
	2012	carry-over tonnage
I. BASE PRICE: (FOB Barge)	2010	\$52.50 per ton
	2011	\$54.50 per ton
	2012	Reopener
	2013	Reopener
	2014	Reopener
J. ESCALATIONS TO DATE:	None	
K. CURRENT CONTRACT PRICE:	\$54.50 per ton	

A. NAME/ADDRESS: Foresight Coal Sales, LLC / J12005  
211 North Broadway, Suite 2600  
St. Louis, Missouri 63102

B. PRODUCTION FACILITY:  
OPERATOR: Macoupin Energy, LLC  
Sugar Camp Energy, LLC  
MINES: Shay Mine No. 1  
Deer Run Mine  
Sugarcamp Mine  
LOCATION: Macoupin, Montgomery and Franklin Counties,  
Illinois

C. CONTRACT EXECUTED DATE: March 14, 2012

D. CONTRACT DURATION: April 1, 2012 - December 31, 2013

E. CONTRACT AMENDMENTS: None

F. ANNUAL TONNAGE REQUIREMENTS

2012	500,000 tons
2013	1,000,000 tons
2014	Reopener

G. ACTUAL TONNAGE RECEIVED:

	<u>KU</u>	<u>LGE</u>
2012	26,601 tons	0 tons
	(through 4/30/12)	

H. PERCENT OF ANNUAL REQUIREMENTS:

2012	5% (through 4/30/12)
------	----------------------

I. BASE PRICE: (FOB Barge)

2012	\$46.00 per ton
2013	\$48.50 per ton
2014	Reopener
2015	Reopener

J. ESCALATIONS TO DATE: None

K. CURRENT CONTRACT PRICE: \$46.00 per ton

A. NAME/ADDRESS: Oxford Mining Company – Kentucky, LLC  
(contract acquired on 9/30/09 from Charolais Coal Sales, LLC) / J07003  
544 Chestnut Street  
Coshocton, Ohio 43812

B. PRODUCTION FACILITY:  
OPERATOR Charolais Coal No.1, LLC & Charolais Coal Resources, LLC  
MINE Vogue West & Rock Crusher Mines  
LOCATION Muhlenberg County, Kentucky

C. CONTRACT EXECUTED DATE: December 21, 2006

D. CONTRACT DURATION: January 1, 2007 – December 31, 2011

E. CONTRACT AMENDMENTS: Contract assigned from Phoenix Coal Corp. & Charolais Coal Sales, LLC effective October 1, 2009. Amendment No. 1, dated effective October 1, 2009; term extended to December 31, 2011. Yearly base quantity amended. Amendment No. 1, dated April 15, 2011. Term extended to December 31, 2012. Yearly base quantity amended.

F. ANNUAL TONNAGE REQUIREMENTS:	2007	591,172 tons
	2008	464,372 tons
	2009	791,336 tons
	2010	642,576 tons
	2011	673,197 tons
	2012	250,000 tons

G. ACTUAL TONNAGE RECEIVED:	<u>KU</u>	<u>LGE</u>	
	2007	361,950 tons	229,223 tons
	2008	384,389 tons	79,983 tons
	2009	598,474 tons	192,863 tons
	2010	367,542 tons	275,035 tons
	2011	300,984 tons	249,041 tons
	2012	129,774 tons	13,801 tons
		(through 4/30/12)	

H. PERCENT OF ANNUAL REQUIREMENTS:	2007	100%
	2008	100%
	2009	100%

2010 100%  
2011 82%  
2012 57% (through 4/30/12)

I. BASE PRICE (FOB Barge):  
2007 \$32.20 per ton  
2008 \$32.75 per ton  
2009 \$34.10 per ton  
2010 \$36.10 per ton

J. ESCALATIONS TO DATE: None

K. CURRENT CONTRACT PRICE: \$36.10 per ton

A. NAME/ADDRESS:	Oxford Mining Company – Kentucky, LLC / J12003 544 Chestnut Street Coshocton, Ohio 43812									
B. PRODUCTION FACILITY: OPERATOR MINE LOCATION	Oxford Mining Company – Kentucky, LLC Briar Hill, Rose France and KO Mines Muhlenberg County, Kentucky									
C. CONTRACT EXECUTED DATE:	September 12, 2011									
D. CONTRACT DURATION:	January 1, 2012 – December 31, 2013									
E. CONTRACT AMENDMENTS:	None									
F. ANNUAL TONNAGE REQUIREMENTS:	2012 400,000 tons 2013 600,000 tons									
G. ACTUAL TONNAGE RECEIVED:	<table border="0" style="margin-left: 40px;"> <tr> <td></td> <td style="text-align: center;"><u>KU</u></td> <td style="text-align: center;"><u>LGE</u></td> </tr> <tr> <td>2012</td> <td>98,287 tons</td> <td>38,923 tons</td> </tr> <tr> <td></td> <td colspan="2" style="text-align: center;">(through 4/30/12)</td> </tr> </table>		<u>KU</u>	<u>LGE</u>	2012	98,287 tons	38,923 tons		(through 4/30/12)	
	<u>KU</u>	<u>LGE</u>								
2012	98,287 tons	38,923 tons								
	(through 4/30/12)									
H. PERCENT OF ANNUAL REQUIREMENTS:	2012 34% through (4/30/12)									
I. BASE PRICE (FOB Barge):	2012 \$46.50 per ton 2013 \$47.50 per ton									
J. ESCALATIONS TO DATE:	\$2.71 per ton									
K. CURRENT CONTRACT PRICE:	\$49.21 per ton									

A. NAME/ADDRESS:	Patriot Coal Sales, LLC / J07037 12312 Olive Boulevard, Suite 400 St. Louis, Missouri 63141	
B. PRODUCTION FACILITY: OPERATOR MINE LOCATION	Patriot Coal and Ohio County Coal Patriot and Freedom Mines Henderson County, Kentucky	
C. CONTRACT EXECUTED DATE:	January 15, 2008	
D. CONTRACT DURATION:	January 1, 2008 - December 31, 2011	
E. CONTRACT AMENDMENTS:	Amendment No. 1 effective January 1, 2010 extending term to 12/31/2011	
F. ANNUAL TONNAGE REQUIREMENTS:	2008 1,250,000 tons 2009 1,250,000 tons	
G. ACTUAL TONNAGE RECEIVED:	<u>LG&amp;E</u>	<u>KU</u>
	2008 699,815 tons	470,649 tons
	2009 428,872 tons	733,892 tons
	2010 0 tons	89,733 tons
	2011 4,807 tons	75,981 tons
H. PERCENT OF ANNUAL REQUIREMENTS:	2008 94% 2009 93% 2010 carry-over tonnage 2011 carry-over tonnage	
I. BASE PRICE (FOB Barge):	2008 \$30.00 per ton 2009 \$31.00 per ton	
J. ESCALATIONS TO DATE:	None	
K. CURRENT CONTRACT PRICE:	\$31.00 per ton	

A. NAME/ADDRESS: Patriot Coal Sales, LLC / J10002  
12312 Olive Boulevard, Suite 400  
St. Louis, Missouri 63141

B. PRODUCTION FACILITY:  
OPERATOR Patriot Coal, Ohio County Coal and Highland  
Mining Company, LLC  
MINE Patriot, Freedom and Highland Mines  
LOCATION Henderson and Union Counties, Kentucky

C. CONTRACT EXECUTED DATE: December 3, 2009

D. CONTRACT DURATION: January 1, 2010 - December 31, 2011

E. CONTRACT AMENDMENTS: None

F. ANNUAL TONNAGE REQUIREMENTS:

2010	100,000 tons
2011	200,000 tons

G. ACTUAL TONNAGE RECEIVED:

	<u>LG&amp;E</u>	<u>KU</u>
2010	3,186 tons	88,988 tons
2011	14,408 tons	181,147 tons
2012	0 tons	9,435 tons

H. PERCENT OF ANNUAL REQUIREMENTS:

2010	92%
2011	98%
2012	carry-over tonnage

I. BASE PRICE (FOB Barge):

2010	\$43.00 per ton
2011	\$43.00 per ton

J. ESCALATIONS TO DATE: \$4.549 per ton

K. CURRENT CONTRACT PRICE: \$47.549 per ton

A. NAME/ADDRESS: Patriot Coal Sales, LLC / J10010  
12312 Olive Boulevard, Suite 400  
St. Louis, Missouri 63141

B. PRODUCTION FACILITY:  
OPERATOR Patriot Coal, Ohio County Coal and Highland  
Mining Company, LLC  
MINE Patriot, Freedom and Highland Mines  
LOCATION Henderson and Union Counties, Kentucky

C. CONTRACT EXECUTED DATE: January 20, 2010

D. CONTRACT DURATION: January 1, 2010 - December 31, 2011

E. CONTRACT AMENDMENTS: None

F. ANNUAL TONNAGE REQUIREMENTS:

2010	240,000 tons
2011	240,000 tons

G. ACTUAL TONNAGE RECEIVED:

	<u>LG&amp;E</u>	<u>KU</u>
2010	15,969 tons	206,827 tons
2011	12,757 tons	234,179 tons
2012	0 tons	9,430 tons

H. PERCENT OF ANNUAL REQUIREMENTS:

2010	93%
2011	103%
2012	carry-over tonnage

I. BASE PRICE (FOB Barge):

2010	\$41.25 per ton
2011	\$41.25 per ton

J. ESCALATIONS TO DATE: \$3.038 per ton

K. CURRENT CONTRACT PRICE: \$44.288 per ton



A. NAME/ADDRESS:	Patriot Coal Sales, LLC / J12001 12312 Olive Boulevard, Suite 400 St. Louis, Missouri 63141
B. PRODUCTION FACILITY: OPERATOR	Patriot Coal, Ohio County Coal and Highland Mining Company, LLC
MINE LOCATION	Patriot, Freedom and Highland Mines Henderson and Union Counties, Kentucky
C. CONTRACT EXECUTED DATE:	April 29, 2011
D. CONTRACT DURATION:	January 1, 2012 - December 31, 2013
E. CONTRACT AMENDMENTS:	None
F. ANNUAL TONNAGE REQUIREMENTS:	2012 1,250,000 tons 2013 1,250,000 tons
G. ACTUAL TONNAGE RECEIVED:	<u>LG&amp;E</u> <u>KU</u> 2012 132,858 tons 274,322 tons (through 4/30/12)
H. PERCENT OF ANNUAL REQUIREMENTS:	2012 33% (through 4/30/12)
I. BASE PRICE (FOB Barge):	2012 \$46.25 per ton – Quality 1 2012 \$49.50 per ton – Quality 2 2013 \$46.25 per ton – Quality 1 2013 \$49.50 per ton – Quality 2
J. ESCALATIONS TO DATE:	None
K. CURRENT CONTRACT PRICE:	\$46.25 per ton – Quality 1 \$49.50 per ton – Quality 2

A. NAME/ADDRESS:	Rhino Energy, LLC / J08028 3120 Wall Street, Suite 310 Lexington, Kentucky 40513		
B. PRODUCTION FACILITY:	Sands Hill Coal Company		
OPERATOR	Sands Hill Mine		
MINE	Jackson and Vinton Counties, Ohio		
LOCATION			
C. CONTRACT EXECUTED DATE:	July 13, 2008		
D. CONTRACT DURATION:	July 1, 2008 – December 31, 2012		
E. CONTRACT AMENDMENTS:	None		
F. ANNUAL TONNAGE REQUIREMENTS:	2008	90,000 tons	
	2009	360,000 tons	
	2010	360,000 tons	
	2011	360,000 tons	
	2012	360,000 tons	
G. ACTUAL TONNAGE RECEIVED:		<u>LG&amp;E</u>	<u>KU</u>
	2008	31,033 tons	53,552 tons
	2009	148,063 tons	218,005 tons
	2010	118,375 tons	225,346 tons
	2011	3,308 tons	363,798 tons
	2012	34,994 tons	84,399 tons
		(through 4/30/12)	
H. PERCENT OF ANNUAL REQUIREMENTS:	2008	94%	
	2009	102%	
	2010	95%	
	2011	102%	
	2012	33% (through 4/30/12)	
I. BASE PRICE (FOB Barge):	2008	\$49.25 per ton	
	2009	\$49.25 per ton	
	2010	\$50.25 per ton	
	2011	\$51.85 per ton	
	2012	\$53.40 per ton	
J. ESCALATIONS TO DATE:	-\$0.64 per ton		
K. CURRENT CONTRACT PRICE:	\$52.76 per ton		

A. NAME/ADDRESS:	Solar Sources, Inc. / J12010 6755 South Gray Road Indianapolis, Indiana 46237						
B. PRODUCTION FACILITY: OPERATOR MINE LOCATION	Solar Sources, Inc. Shamrock, Cannelburg, Charger & Antioch Dubois, Pike and Daviess Counties, Indiana						
C. CONTRACT EXECUTED DATE:	December 19, 2011						
D. CONTRACT DURATION:	January 1, 2012 – December 31, 2013						
E. CONTRACT AMENDMENTS:	None						
F. ANNUAL TONNAGE REQUIREMENTS:	2012 300,000 tons 2013 400,000 tons						
G. ACTUAL TONNAGE RECEIVED:	<table><thead><tr><th></th><th><u>KU</u></th><th><u>LGE</u></th></tr></thead><tbody><tr><td>2012</td><td>82,797 tons (through 4/30/12)</td><td>0 tons</td></tr></tbody></table>		<u>KU</u>	<u>LGE</u>	2012	82,797 tons (through 4/30/12)	0 tons
	<u>KU</u>	<u>LGE</u>					
2012	82,797 tons (through 4/30/12)	0 tons					
H. PERCENT OF ANNUAL REQUIREMENTS:	2012 28% (through 4/30/12)						
I. BASE PRICE (FOB Barge):	2012 \$49.00 per ton 2013 \$50.11 per ton						
J. ESCALATIONS TO DATE:	\$2.03 per ton						
K. CURRENT CONTRACT PRICE:	\$51.03 per ton						

A. NAME/ADDRESS: The American Coal Company / J10005  
101 Prosperous Place, Suite 125  
Lexington, Kentucky 40509

B. PRODUCTION FACILITY:  
OPERATOR: The American Coal Company  
MINES: Galatia Mine  
LOCATION: Saline County, Illinois

C. CONTRACT EXECUTED DATE: December 23, 2009

D. CONTRACT DURATION: January 1, 2010 - December 31, 2014

E. CONTRACT AMENDMENTS: None

F. ANNUAL TONNAGE REQUIREMENTS:

2010	250,000 tons
2011	750,000 tons

G. ACTUAL TONNAGE RECEIVED:

	<u>KU</u>	<u>LGE</u>
2010	243,808 tons	0 tons
2011	709,190 tons	27,351 tons
2012	11,300 tons	0 tons

H. PERCENT OF ANNUAL REQUIREMENTS:

2010	98%
2011	98%
2012	carry-over tonnage

I. BASE PRICE: (FOB Barge)

2010	\$43.00 per ton
2011	\$46.00 per ton

J. ESCALATIONS TO DATE: \$0.73 per ton

K. CURRENT CONTRACT PRICE: \$46.73 per ton

A. NAME/ADDRESS:	Triad Mining, Inc. / J12009 1524 Frederica Street Owensboro, Kentucky 42301		
B. PRODUCTION FACILITY:			
OPERATOR:	Triad Mining, Inc.		
MINES:	Log Creek		
LOCATION:	Pike County, Indiana		
C. CONTRACT EXECUTED DATE:	December 19, 2011		
D. CONTRACT DURATION:	January 1, 2012 - December 31, 2014		
E. CONTRACT AMENDMENTS:	None		
F. ANNUAL TONNAGE REQUIREMENTS:	2012	700,000 tons	
	2013	700,000 tons	
	2014	700,000 tons	
G. ACTUAL TONNAGE RECEIVED:		<u>KU</u>	<u>LGE</u>
	2012	197,865 tons (through 4/30/12)	0 tons
H. PERCENT OF ANNUAL REQUIREMENTS:	2012	28% (through 4/30/12)	
I. BASE PRICE: (FOB Railcar)	2012	\$45.50 per ton	
	2013	\$47.50 per ton	
	2014	\$49.00 per ton	
J. ESCALATIONS TO DATE:	-\$0.17 per ton		
K. CURRENT CONTRACT PRICE:	\$45.33 per ton		

A. NAME/ADDRESS: Western Kentucky Minerals, Inc. / J10001  
P.O. Box 155  
Philpot, Kentucky 42366

B. PRODUCTION FACILITY:  
OPERATOR: Western Kentucky Minerals, Inc.  
MINES: Joe's Run and Sun Energy Mines  
LOCATION: Daviess County, Kentucky and Pike County,  
Indiana

C. CONTRACT EXECUTED DATE: December 8, 2009

D. CONTRACT DURATION: April 1, 2010 - December 31, 2012

E. CONTRACT AMENDMENTS: None

F. ANNUAL TONNAGE REQUIREMENTS:

2010	253,300 tons
2011	403,300 tons
2012	403,300 tons

G. ACTUAL TONNAGE RECEIVED:

	<u>KU</u>	<u>LGE</u>
2010	141,289 tons	98,507 tons
2011	282,894 tons	116,528 tons
2012	55,097 tons (through 4/30/12)	98,985 tons

H. PERCENT OF ANNUAL REQUIREMENTS:

2010	95%
2011	99%
2012	38% (through 4/30/12)

I. BASE PRICE: (FOB Barge)

2010	\$48.35 per ton
2011	\$48.35 per ton
2012	\$48.35 per ton

J. ESCALATIONS TO DATE: \$22.988 per ton

K. CURRENT CONTRACT PRICE: \$71.338 per ton



**LOUISVILLE GAS AND ELECTRIC COMPANY**

**Response to Information Requested in Appendix of  
Commission's Order Dated August 22, 2012**

**Case No. 2012-00321**

**Question No. 9**

**Witness: Mike Dotson**

- Q-9. a. State whether LG&E regularly compares the price of its coal purchases to those paid by other electric utilities.
- b. If yes, state:
- (1) How LG&E's prices compare with those of other utilities for the review period. Include all prices used in the comparison in cents per MMBtu.
  - (2) The utilities that are included in this comparison and their locations.

- A-9. a. Yes.
- b. LG&E compares pricing of its coal purchases with neighboring utilities from data that is compiled by Energy Velocity database. The utilities included in the comparison are shown on the list found on page 1 of the Attachment to this response. The chart found on page 2 of the Attachment shows the comparison for coal greater than 5.0 lbs. SO<sub>2</sub> content, which coal is in line with the coal used in all of LG&E's units.

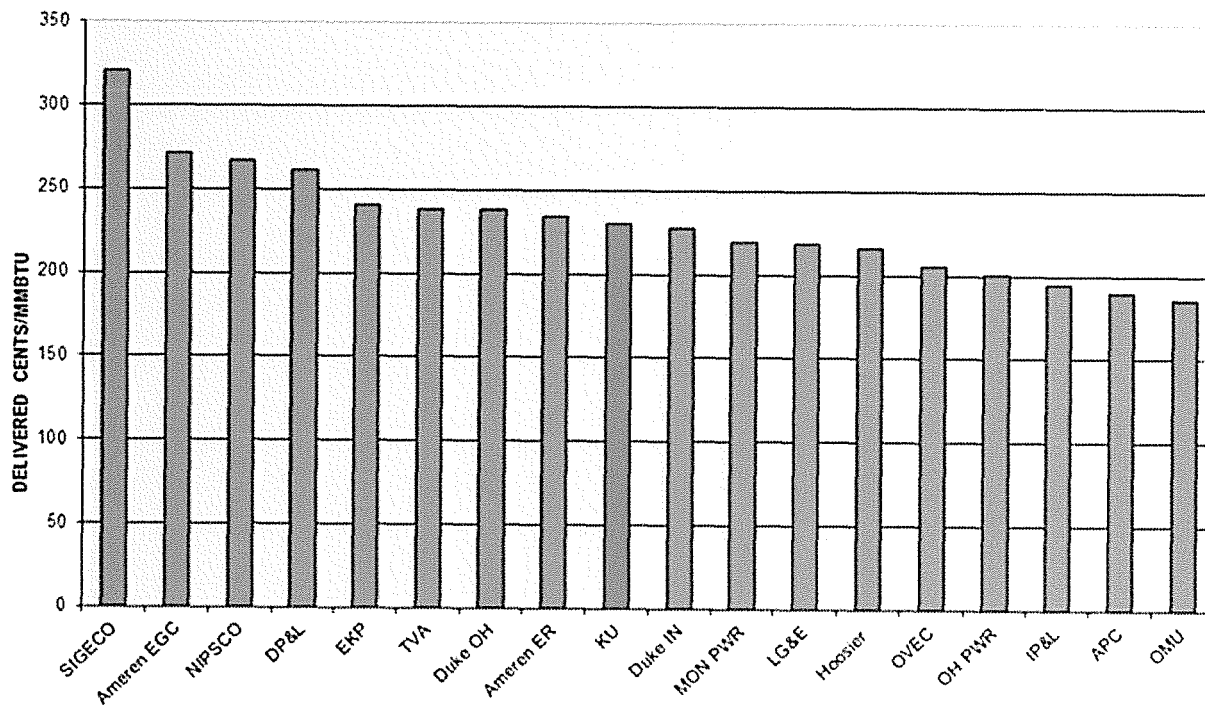
The chart on page 3 of the Attachment shows the price comparison of coal containing less than 5.0 lbs. SO<sub>2</sub> content. LG&E accepts deliveries of lower sulfur coal to satisfy bids with a sulfur content specification of 6 lbs. The lower sulfur coal is being supplied under a contract specifying higher sulfur content coal and appropriate pricing; therefore, the price of the lower sulfur content coal is similar to what LG&E is paying for high sulfur coal.



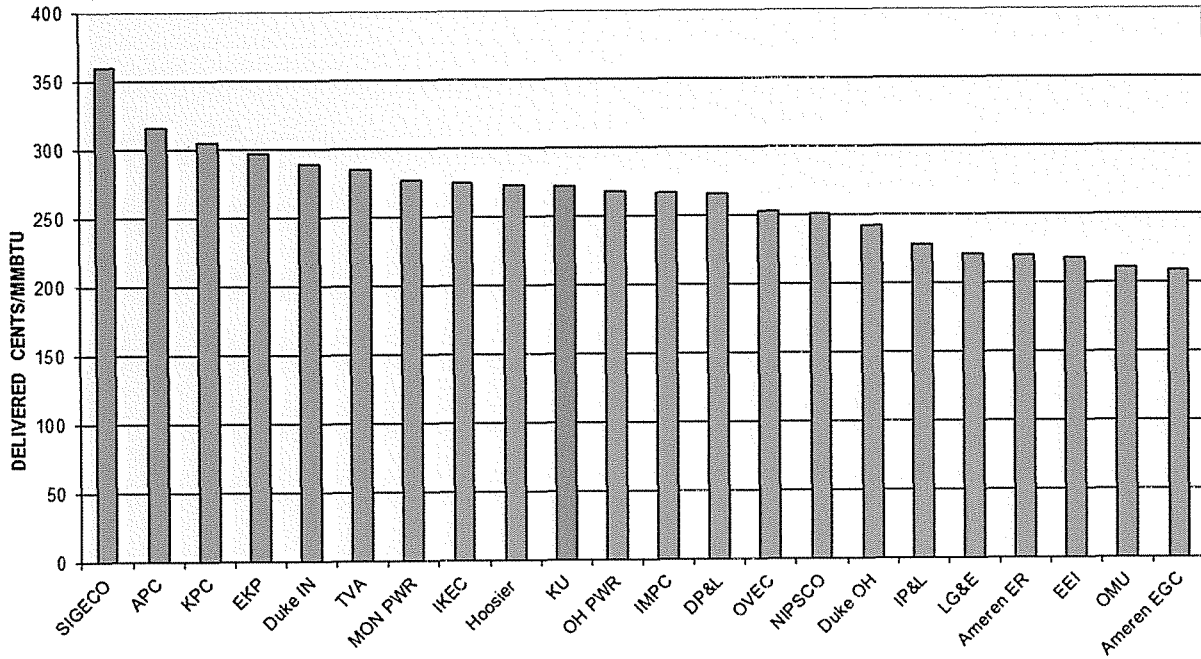
**Utilities in Comparison List**

<b>UTILITY</b>	<b>ABBREVIATED</b>	<b>PLANT LOCATIONS</b>
AmerenEnergy Generating Co	Ameren ER	Illinois
AmerenEnergy Resources Generating Co	Ameren EGC	Illinois
Appalachian Power Co	APC	Virginia, West Virginia
Cardinal Operating (AEP)	Cardinal	Ohio
Columbus Southern Power Co	CSPC	Kentucky, Ohio
Dayton Power & Light Co (The)	DP&L	Ohio
Duke Energy Indiana	Duke IN	Indiana
Duke Energy Ohio	Duke OH	Ohio
East Kentucky Power Coop	EKP	Kentucky
Electric Energy Inc	EEI	Illinois
Hoosier Energy Rural Electric Coop Inc	Hoosier	Indiana
Indiana Kentucky Electric Corp	IKEC	Indiana
Indiana Michigan Power Co	IMPC	Indiana
Indianapolis Power & Light	IP&L	Indiana
Kentucky Power Co	KPC	Kentucky
Kentucky Utilities Co	KU	Kentucky
Louisville Gas & Electric Co	LG&E	Kentucky
Monongahela Power Co	MON PWR	West Virginia
Northern Indiana Public Service Co	NIPSCO	Indiana
Ohio Power Co	OH PWR	Ohio, West Virginia
Ohio Valley Electric Corp	OVEC	Ohio
Owensboro Municipal Utilities	OMU	Kentucky
Southern Indiana Gas & Electric Co	SIGECO	Indiana
Tennessee Valley Authority	TVA	Alabama, Kentucky, Tennessee

Price Comparison  
≥ 5.0 Lbs SO<sub>2</sub> Content (Jun 11 - May 12)



Price Comparison  
< 5.0 Lbs SO<sub>2</sub> Content (Jun 11 - May 12)





**LOUISVILLE GAS AND ELECTRIC COMPANY**

**Response to Information Requested in Appendix of  
Commission's Order Dated August 22, 2012**

**Case No. 2012-00321**

**Question No. 10**

**Witness: Mike Dotson**

Q-10. State the percentage of LG&E's coal, as of the date of this Order, that is delivered by:

- a. Rail;
- b. Truck; or
- c. Barge.

- A-10. a. Rail: 55%
- b. Truck: 0%
  - c. Barge: 45%



**LOUISVILLE GAS AND ELECTRIC COMPANY**

**Response to Information Requested in Appendix of  
Commission's Order Dated August 22, 2012**

**Case No. 2012-00321**

**Question No. 11**

**Witness: Mike Dotson**

- Q-11. a. State LG&E's coal inventory level in tons and in number of days' supply as of April 30, 2012. Provide this information by generating station and in the aggregate.
- b. Describe the criteria used to determine number of days' supply.
- c. Compare LG&E's coal inventory as of April 30, 2012 to its inventory target for that date for each plant and for total inventory.
- d. If actual coal inventory exceeds inventory target by 10 days' supply, state the reasons for excessive inventory.
- e. (1) State whether LG&E expects any significant changes in its current coal inventory target within the next 12 months.
- (2) If yes, state the expected change and the reasons for this change.

A-11. a. As of April 30, 2012:

Cane Run	237,829 Tons; 41 Days	Target 23-43 Days
Mill Creek	759,474 Tons; 52 Days	Target 25-44 Days
Trimble County*	314,112 Tons; 58 Days	Target 25-45 Days
Total	1,311,415 Tons; 49 Days	Target 24-42 Days

\* Trimble County coal inventory includes both high sulfur coal, which is used in Units 1 and 2, and PRB coal, which is used only in Unit 2.

- b. The method of calculating days in inventory is based on each plant's coal burn capability (coal tons in inventory divided by 90% of each generating unit's heat input description from its air permit to operate).

Upper and lower tons/day targeted inventory days were established for each plant taking into consideration each plant's operating parameters. Each plant's "least cost" inventory range is established annually during the planning process based on historical coal burn/receipt variances, procurement reaction time for long-term fuel supply agreements, current coal and electricity prices offset by carrying and outage costs.

- c. See (a) above.
- d. Trimble County Unit 2 required an extensive outage due to burner issues.
- e. (1) LG&E does not expect significant changes in its current coal inventory target levels; however, during the Companies' planning cycle minor adjustments may be made to the inventory targets if warranted.  
  
(2) Not applicable.





**LOUISVILLE GAS AND ELECTRIC COMPANY**

**Response to Information Requested in Appendix of  
Commission's Order Dated August 22, 2012**

**Case No. 2012-00321**

**Question No. 12**

**Witness: Mike Dotson**

Q-12. a. State whether LG&E has audited any of its coal contracts during the period from November 1, 2011 through April 30, 2012.

b. If yes, for each audited contract:

(1) Identify the contract;

(2) Identify the auditor;

(3) State the results of the audit; and

(4) Describe the actions that LG&E took as a result of the audit.

A-12. a. No. LG&E has not conducted any financial audits of coal companies. LG&E's current coal contracts either contain a fixed price or a portion of the base contract price is adjusted using government published indices to reflect the changes in the cost. These agreements thus do not require audits. Either LG&E's Manager Fuels Risk Management or Mining Engineer does conduct scheduled on-site reviews and inspections of the mining operations and sampling systems of each vendor up to twice a year and likewise may conduct unscheduled visits. Additionally, LG&E employees may visit a vendor as needed to address problems and issues at any time.

Coal mine safety regulations were imposed by the Federal Mine Safety and Health Administration. The U. S. Congress passed the Mine Improvement and New Emergency Response Act of 2006 (MINER Act), which became law on June 15, 2006. For claims received, LG&E has hired Weir International, Inc. (a consultant with experience in the mining industry) to review the requests.

Smoky Mountain Coal, in accordance with the provisions of Section 8.3 New Imposition of Agreement LGE-02013, requested a price increase for the periods of July 1, 2007 – May 31, 2008 and June 1, 2008 – September 30, 2008. Weir has

reviewed the claims for this period. As indicated in the response to Question No. 14, LG&E is currently in litigation on this contract.

Alliance Coal, LLC, in accordance with the provisions of Section 8.3 Governmental Impositions of Agreement LGE06010, made claims for price adjustments for the coal sold under the Agreement during 2010. The Parties agreed to a settlement. A copy of the Settlement Agreement effective January 27, 2012 is being filed with the Commission under seal pursuant to a Petition for Confidential Treatment.

Alliance Coal, LLC, in accordance with the provisions of Section 8.3 Governmental Impositions of Agreement J09002, made claims for price adjustments for the coal sold under the Agreement during 2010. The Parties agreed to a settlement. A copy of the Settlement Agreement effective January 27, 2012 is being filed with the Commission under seal pursuant to a Petition for Confidential Treatment.

- b. Not applicable



**LOUISVILLE GAS AND ELECTRIC COMPANY**

**Response to Information Requested in Appendix of  
Commission's Order Dated August 22, 2012**

**Case No. 2012-00321**

**Question No. 13**

**Witness: Robert M. Conroy**

- Q-13. a. State whether LG&E has received any customer complaints regarding its FAC during the period from November 1, 2011 through April 30, 2012.
- b. If yes, for each complaint, state:
- (1) The nature of the complaint; and
  - (2) LG&E's response.

- A-13. a. No.
- b. Not applicable.



**LOUISVILLE GAS AND ELECTRIC COMPANY**

**Response to Information Requested in Appendix of  
Commission's Order Dated August 22, 2012**

**Case No. 2012-00321**

**Question No. 14**

**Witness: Mike Dotson**

- Q-14. a. State whether LG&E is currently involved in any litigation with its current or former coal suppliers.
- b. If yes, for each litigation:
- (1) Identify the coal supplier;
  - (2) Identify the coal contract involved;
  - (3) State the potential liability or recovery to LG&E;
  - (4) List the issues presented; and
  - (5) Provide a copy of the complaint or other legal pleading that initiated the litigation and any answers or counterclaims. If a copy has previously been filed with the Commission, provide the date on which it was filed and the case in which it was filed.
- c. State the current status of all litigation with coal suppliers.
- A-14. a. Yes
- b. **Coal Supply Agreement KUF02860/LGE02013**
- (1) Resource Sales, Inc. ("Resource"), Allied resources, Inc. ("Allied"), Cochise Coal Company, Inc. ("Cochise"), and Smoky Mountain Coal Corporation ("SMCC")
  - (2) Coal Purchase Order LGE-02013 dated as of January 1, 2002, as amended.
  - (3) KU and LG&E jointly seek to recover damages arising from the non-delivery of 1,019,829 tons of coal. Plaintiffs seek to have the court interpret the force

majeure provision in the Agreement and to recover the amount of payments withheld by KU and LG&E to offset their claim for damages.

- (4) Plaintiffs claim the force majeure provision should be interpreted in such a way that LG&E is not entitled to any more deliveries of coal pursuant to the Agreement. LG&E disagrees and withheld certain payments, as permitted under the Agreement and demands that the Plaintiffs resume deliveries as required under the Agreement.
  - (5) A copy of the Complaint filed by the Plaintiffs in the Circuit Court of Webster County, Kentucky, Civil Action No. 08-CI-00334, a copy of the First Amended Complaint filed by the Plaintiffs in the Circuit Court of Webster, Kentucky, Civil Action No. 08-CI-00334, and a copy of the Answer and Counterclaim filed by LG&E was filed with the Commission in Case No. 2008-00521.
- c. This case is in the discovery phase and is ongoing. The Court denied Plaintiff's motion for judgment on the pleadings and agreed with LG&E's argument that the UCC applies to the contract and allows its interpretation to be informed by evidence on course of conduct, course of dealing and usage of trade. A trial is presently set to begin on June 17, 2013.





**LOUISVILLE GAS AND ELECTRIC COMPANY**

**Response to Information Requested in Appendix of  
Commission's Order Dated August 22, 2012**

**Case No. 2012-00321**

**Question No. 15**

**Witness: Mike Dotson**

- Q-15. a. During the period from November 1, 2011 through April 30, 2012, have there been any changes to LG&E's written policies and procedures regarding its fuel procurement?
- b. If yes:
- (1) Describe the changes;
  - (2) Provide the written policies and procedures as changed;
  - (3) State the date(s) the changes were made; and
  - (4) Explain why the changes were made.
- c. If no, provide the date LG&E's current fuel procurement policies and procedures were last changed, when they were last provided to the Commission, and identify the proceeding in which they were provided.
- A-15. a. No changes were made during the period referenced above.
- b. Not applicable.
- c. The Fuel Procurement Policies and Procedures were last changed effective January 1, 2011 and were provided to the Commission in response to Question No. 15 in Case No. 2011-00248.



**LOUISVILLE GAS AND ELECTRIC COMPANY**

**Response to Information Requested in Appendix of  
Commission's Order Dated August 22, 2012**

**Case No. 2012-00321**

**Question No. 16**

**Witness: Mike Dotson**

- Q-16. a. State whether LG&E is aware of any violations of its policies and procedures regarding fuel procurement that occurred prior to or during the period from November 1, 2011 through April 30, 2012.
- b. If yes, for each violation:
- (1) Describe the violation;
  - (2) Describe the action(s) that LG&E took upon discovering the violation; and
  - (3) Identify the person(s) who committed the violation.
- A-16. a. No.
- b. Not applicable.



**LOUISVILLE GAS AND ELECTRIC COMPANY**

**Response to Information Requested in Appendix of  
Commission's Order Dated August 22, 2012**

**Case No. 2012-00321**

**Question No. 17**

**Witness: Mike Dotson**

Q-17. Identify and explain the reasons for all changes in the organizational structure and personnel of the departments or divisions that are responsible for LG&E's fuel procurement activities that occurred during the period from November 1, 2011 through April 30, 2012.

A-17. Changes that occurred in the Fuels Department are as follows:

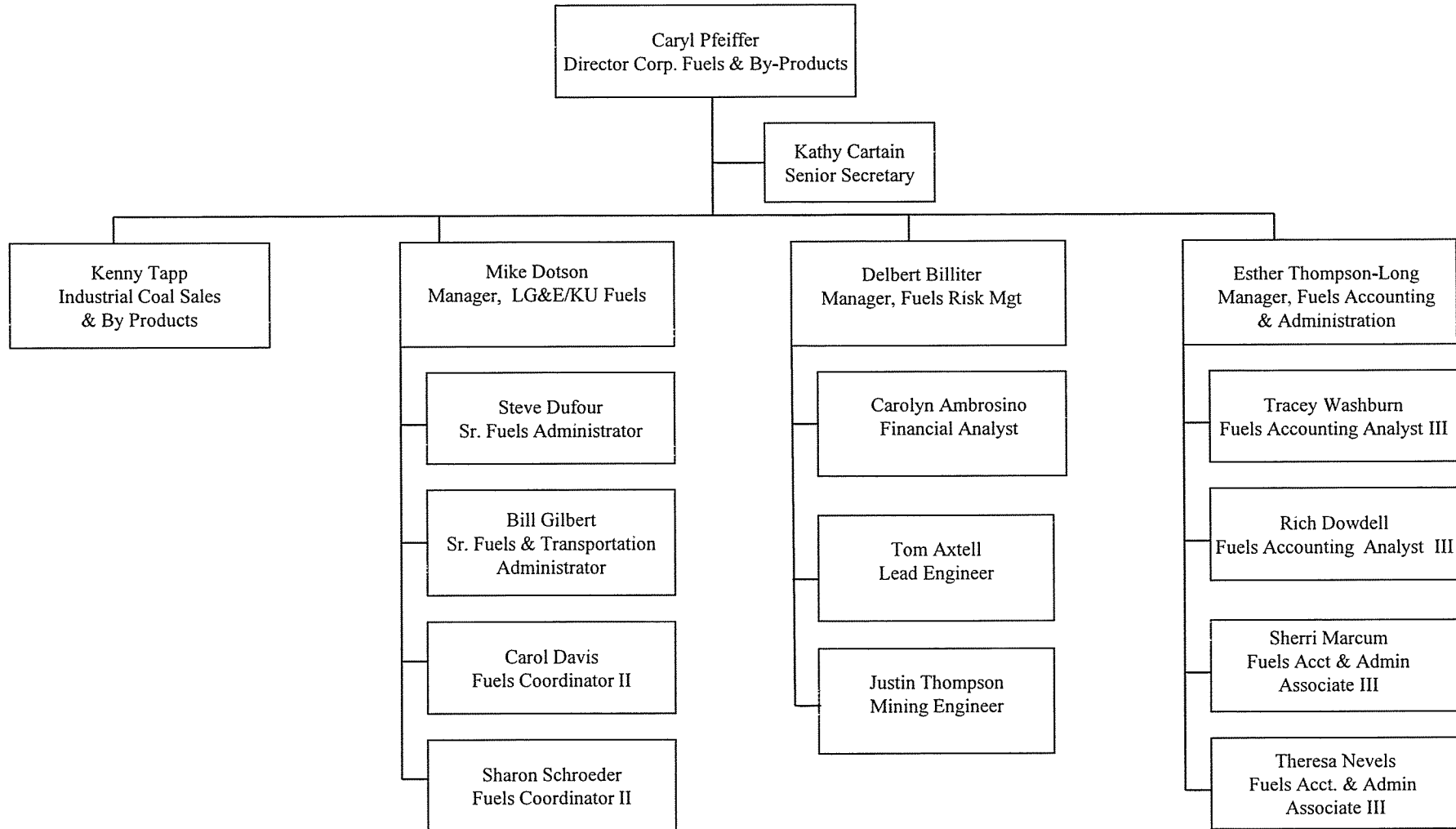
Effective March 5, 2012 Tom Axtell, Mining Engineer was promoted to Lead Engineer. Effective July 9, 2012 Tom Axtell moved from being a direct report to Caryl Pfeiffer, Director of Corporate Fuels and By-Products to being a direct report to Delbert Billiter, Manager Fuels Risk Management.

Effective July 9, 2012 Justin Thompson joined the Fuels Department as Mining Engineer reporting to Delbert Billiter, Manager Fuels Risk Management.

See attached Department organization chart July 2012.

# Corporate Fuels and By-Products

## July 2012







**LOUISVILLE GAS AND ELECTRIC COMPANY**

**Response to Information Requested in Appendix of  
Commission's Order Dated August 22, 2012**

**Case No. 2012-00321**

**Question No. 18**

**Witness: David L. Tummonds**

Q-18. a. Identify all changes that LG&E has made during the period under review to its maintenance and operation practices that also affect fuel usage at LG&E's generation facilities.

b. Describe the impact of these changes on LG&E's fuel usage.

A-18. a. None.

b. Not applicable.



**LOUISVILLE GAS AND ELECTRIC COMPANY**

**Response to Information Requested in Appendix of  
Commission's Order Dated August 22, 2012**

**Case No. 2012-00321**

**Question No. 19**

**Witness: Mike Dotson**

Q-19. List each written coal supply solicitation issued during the period from November 1, 2011 through April 30, 2012.

- a. For each solicitation, provide the date of the solicitation, the type of solicitation (contract or spot), the quantities solicited, a general description of the quality of coal solicited, the time period over which deliveries were requested, and the generating unit(s) for which the coal was intended.
- b. For each solicitation, state the number of vendors to whom the solicitation was sent, the number of vendors who responded, and the selected vendor. Provide the bid tabulation sheet or corresponding document that ranked the proposals. (This document should identify all vendors who made offers.) State the reasons for each selection. For each lowest-cost bid not selected, explain why the bid was not selected.

A-19. In Case No. 2011-00484, a review of KU's FAC for the period May 1, 2011 through October 31, 2011, the final selection of the vendors who responded to the solicitation dated September 26, 2011 was not complete at the time the data responses were filed. The requested information for the selected vendors mentioned above is provided below.

- a. Date: September 26, 2011  
Contract/Spot: Contract or Spot  
Quantities: No minimum or maximum specified  
Quality: Suitable for LG&E power plants and KU's Ghent power plants  
Period: Up to 10 years  
Generating Units: All LG&E coal fired units and KU's Ghent power plant (beginning July 1, 2012)
- b. Number of vendors receiving bids: 143  
Number of vendors responded: 25 companies / 43 offers  
Selected vendor(s): Middlings coal for Ghent (January – June 2012): The vendor selected was based upon the lowest evaluated delivered cost.

Arch Coal Sales -- J12016

Selected vendor(s): High sulfur coal barge (first quarter 2012)

Patriot Coal Sales J12012

The bid analysis information is confidential and proprietary information and is being filed with the Commission under seal pursuant to a Petition for Confidential Protection.

- a. Date: March 5, 2012  
Contract/Spot: Contract or Spot  
Quantities: No minimum or maximum specified  
Quality: Suitable for LG&E power plants and KU's Ghent power plants  
Period: Up to 10 years  
Generating Units: All LG&E coal fired units and KU's Ghent power plant (beginning July 1, 2012)
- b. Number of vendors receiving bids: 143  
Number of vendors responded: 23 companies / 47 offers  
Selected vendor(s): The final selection of the vendor from the high sulfur bids has not been made; however, negotiations are still in progress. The name of the selected vendors and supporting bid tabulation will be provided to the Commission after the negotiations are completed and the agreements signed.  
Selected vendor(s): Middlings coal for Ghent (July – December 2012); The vendor selected was based upon the lowest evaluated delivered cost.  
Revelation Energy LLC – J12035 and J12040

The bid analysis information is confidential and proprietary information and is being filed with the Commission under seal pursuant to a Petition for Confidential Protection.



**LOUISVILLE GAS AND ELECTRIC COMPANY**

**Response to Information Requested in Appendix of  
Commission's Order Dated August 22, 2012**

**Case No. 2012-00321**

**Question No. 20**

**Witness: Mike Dotson**

- Q-20. List each oral coal supply solicitation issued during the period from November 1, 2011 through April 30, 2012.
- a. For each solicitation, state why the solicitation was not written, the date(s) of the solicitation, the quantities solicited, a general description of the quality of coal solicited, the time period over which deliveries were requested, and the generating unit(s) for which the coal was intended.
  - b. For each solicitation, identify all vendors solicited and the vendor selected. Provide the tabulation sheet or other document that ranks the proposals. (This document should identify all vendors who made offers.) State the reasons for each selection. For each lowest-cost bid not selected, explain why the bid was not selected.
- A-20. LG&E did not issue any oral coal supply solicitations.



**LOUISVILLE GAS AND ELECTRIC COMPANY**

**Response to Information Requested in Appendix of  
Commission's Order Dated August 22, 2012**

**Case No. 2012-00321**

**Question No. 21**

**Witness: Robert M. Conroy**

- Q-21. a. List all intersystem sales during the period under review in which LG&E used a third party's transmission system.
- b. For each sale listed above:
- (1) Describe how LG&E addressed, for FAC reporting purposes, the cost of fuel expended to cover any line losses incurred to transmit its power across the third party's transmission system; and
  - (2) State the line loss factor used for each transaction and describe how that line loss factor was determined.
- A-21. a. There were no inter-system sales from November 1, 2011 through April 30, 2012 which required a third party's transmission system.
- b. Not applicable.





**LOUISVILLE GAS AND ELECTRIC COMPANY**

**Response to Information Requested in Appendix of  
Commission's Order Dated August 22, 2012**

**Case No. 2012-00321**

**Question No. 22**

**Witness: Robert M. Conroy**

- Q-22. Describe each change that LG&E made to its methodology for calculating intersystem sales line losses during the period under review.
- A-22. There have been no changes regarding the calculation of losses associated with intersystem sales. LG&E continues to use a line loss factor of one percent to determine the cost of fuel associated with line losses incurred to make an intersystem sale and recovered from such sale consistent with the Commission's December 2, 1999 Order in Case Nos. 96-524-A, 96-254-B, 96-524-C, and the March 2003 Order in Case No. 2002-00225.



**LOUISVILLE GAS AND ELECTRIC COMPANY**

**Response to Information Requested in Appendix of  
Commission's Order Dated August 22, 2012**

**Case No. 2012-00321**

**Question No. 23**

**Witness: Mike Dotson**

Q-23. State whether, during the period under review, LG&E has solicited bids for coal with the restriction that it was not mined through strip mining or mountain top removal. If yes, explain the reasons for the restriction on the solicitation, the quantity in tons and price per ton of the coal purchased as a result of this solicitation, and the difference between the price of this coal and the price it could have obtained for the coal if the solicitation had not been restricted.

A-23. LG&E has not solicited bids with this restriction.



**LOUISVILLE GAS AND ELECTRIC COMPANY**

**Response to Information Requested in Appendix of  
Commission's Order Dated August 22, 2012**

**Case No. 2012-00321**

**Question No. 24**

**Witness: David L. Tummonds**

Q-24. Provide a detailed discussion of any specific generation efficiency improvements LG&E has undertaken during the period under review.

A-24. LG&E strives to maintain unit efficiency through routine cyclic planned outage maintenance. This maintenance work continues to focus on reestablishing turbine efficiency degraded since the previous outage. Additionally, LG&E maintains unit efficiency through continuous monitoring of all plant systems during operation. LG&E contracts Black and Veatch to provide this monitoring on larger units to identify trends which indicate a potential efficiency loss of any system component. Black and Veatch sends notification to the generating stations which track the potential issue through resolution.

In evaluating potential major component projects or replacements that may impact efficiency, LG&E must balance any potential efficiency benefit associated with the project against both costs and potential implications under the Clean Air Act. LG&E has not realized any efficiency improvements through major component projects during this period.



**LOUISVILLE GAS AND ELECTRIC COMPANY**

**Response to Information Requested in Appendix of  
Commission's Order Dated August 22, 2012**

**Case No. 2012-00321**

**Question No. 25**

**Witness: Mike Dotson**

- Q-25. Explain whether closures of coal mines due to decreased demand for coal could potentially lead to coal shortages that could affect reliability. Include in the explanation whether evidence of such a potential shortage exists today.
- A-25. The majority of the coal mines closed have been in the Central Appalachian Region primarily due to oversupply and reduced demand. At this time the Company has not seen a significant impact to the mines supplying LG&E and KU. The majority of the coal used is supplied from the Illinois Basin and the Company has seen an increase in supply from this region. As overall coal demand returns, shortages due to the mine closures could occur. The Company continues to monitor the markets and will position itself to minimize any impacts to the Company's coal supply.





**LOUISVILLE GAS AND ELECTRIC COMPANY****Response to Information Requested in Appendix of  
Commission's Order Dated August 22, 2012****Case No. 2012-00321****Question No. 26****Witness: Robert M. Conroy / Mike Dotson**

Q-26. The table below shows the fuel costs for the month of April for LG&E and Kentucky Utilities Company ("KU") for the years 2008 through 2012.

Year	LG&E	KU
2008	\$.01837	\$.02681
2009	\$.02154	\$.02816
2010	\$.02194	\$.02677
2011	\$.02476	\$.02783
2012	\$.02725	\$.02713

The table shows that LG&E has experienced an increase in fuel costs over the past four years relative to KU's fuel costs. Explain the reason for the relatively larger LG&E increase.

A-26. The fuel costs in the table are the FAC total cost ( $F(m) / S(m)$ ), for a single month in a given year. Monthly FAC costs are influenced by many factors, including the cost of fuel. The FAC cost can be influenced by the Companies' planned outage schedules, which can cause a temporary increase in the FAC due to a maintenance outage on a lower cost unit. It can also be influenced by the mix of generation (coal or gas), power purchases, and intersystem sales that are utilized to serve load in a given month. In any month, a change in the mix of sources can result in an increase or a decrease in the FAC cost without a significant change in fuel costs.

Both Companies' cost of coal has been increasing; however, KU's overall cost of fuel has increased less due to the fuel switching that has occurred with the construction and operation of the FGD's at the Ghent and Brown generating stations. With the majority of the LG&E and KU coal generation now utilizing high sulfur coal, the overall system fuel cost for each Company should become very similar. Additionally, low-cost, long term contracts have expired for LG&E and have been replaced with higher cost contracts based on market prices. Further, as KU's cost of generation stabilized, and the gap between LG&E's cost of generation narrowed, KU has purchased somewhat less

economy power from LG&E; this decrease results in a decrease in LG&E's intercompany sales, which results in an increase in the FAC cost, all other variables being held constant.