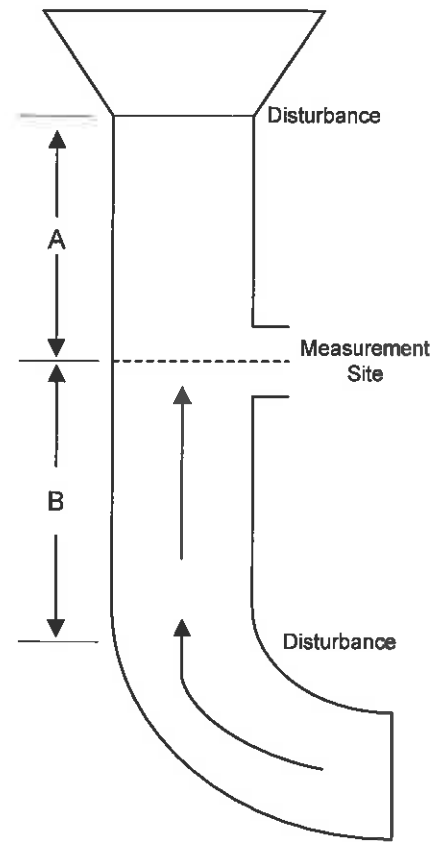
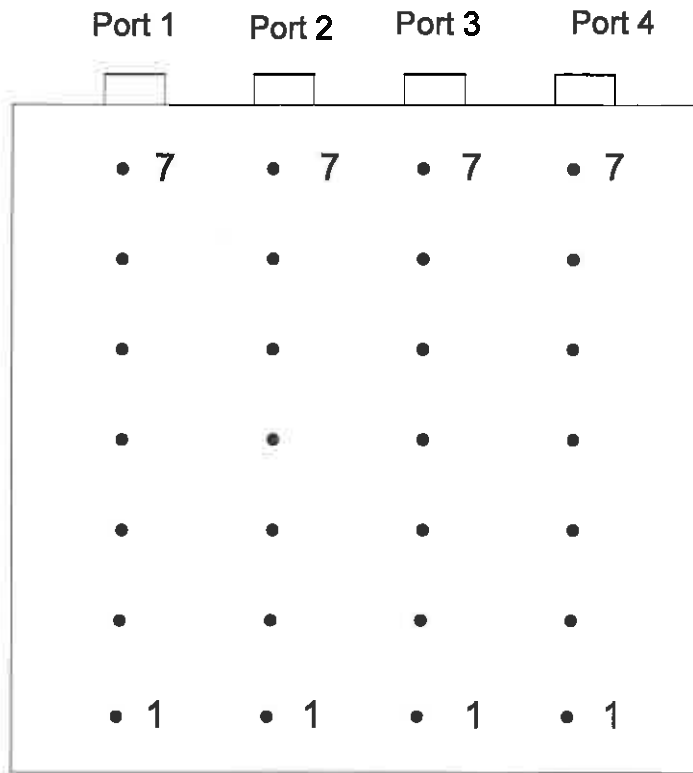


Up ↑



Dimensions (in.) 162.0 X 162.0
 Port Length (in.) 43.0

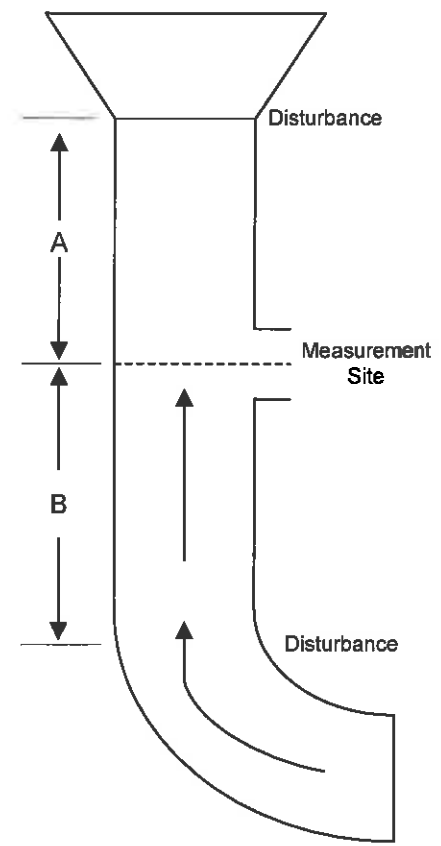
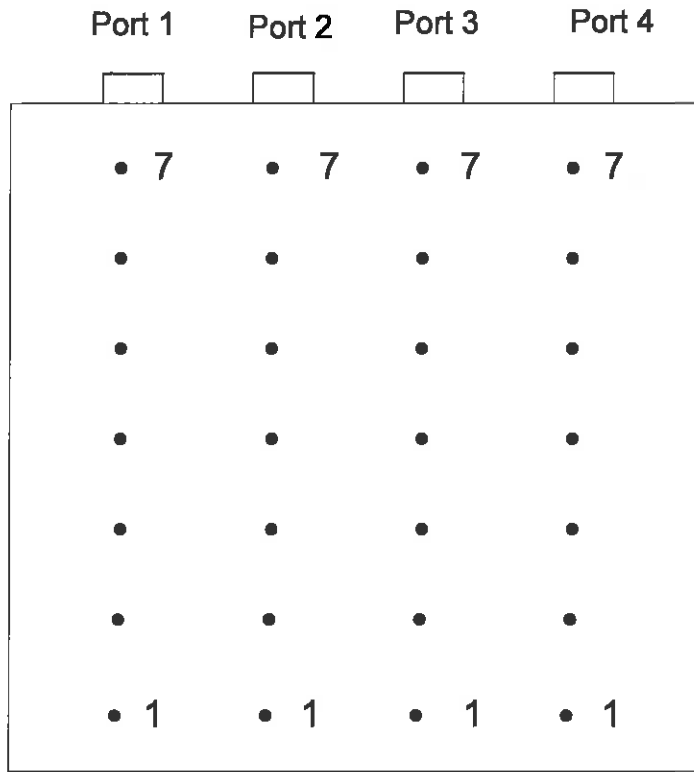
Point	Distance From Wall (in.)
1	11.6
2	34.7
3	57.9
4	81.0
5	104.1
6	127.3
7	150.4

Cross Section of the Wilson ESP 1 Test Location
 Big Rivers Electric Corporation

Figure 1



Up



Dimensions (in.) 162.0 X 162.0

Port Length (in.) 43.0

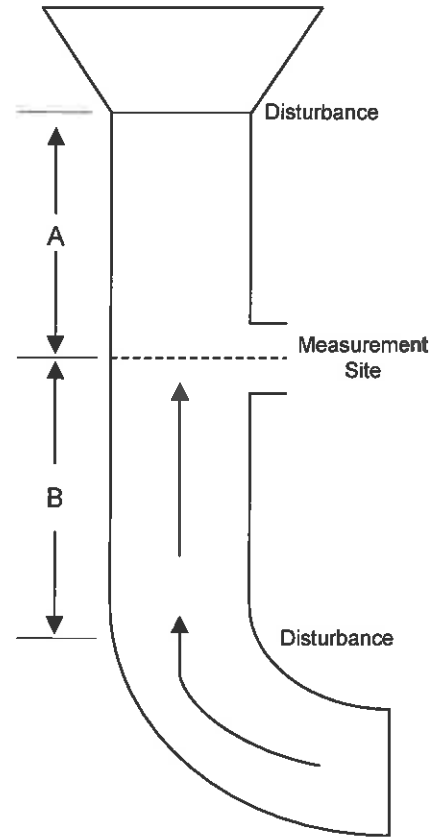
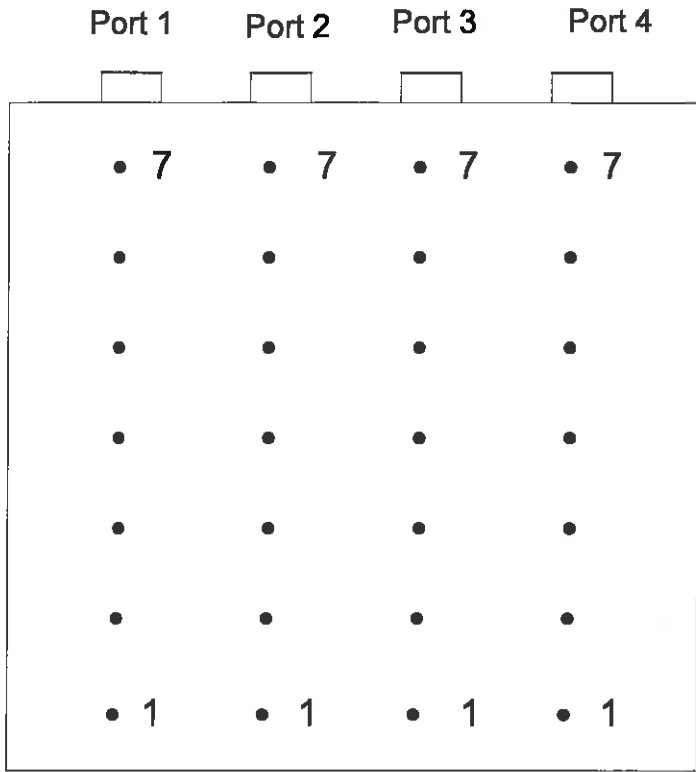
Point	Distance From Wall (in.)
1	11.6
2	34.7
3	57.9
4	81.0
5	104.1
6	127.3
7	150.4

Cross Section of the Wilson ESP 2 Test Location
Big Rivers Electric Corporation

Figure 2



Up ↑



Dimensions (in.) 162.0 X 162.0
 Port Length (in.) 43.0

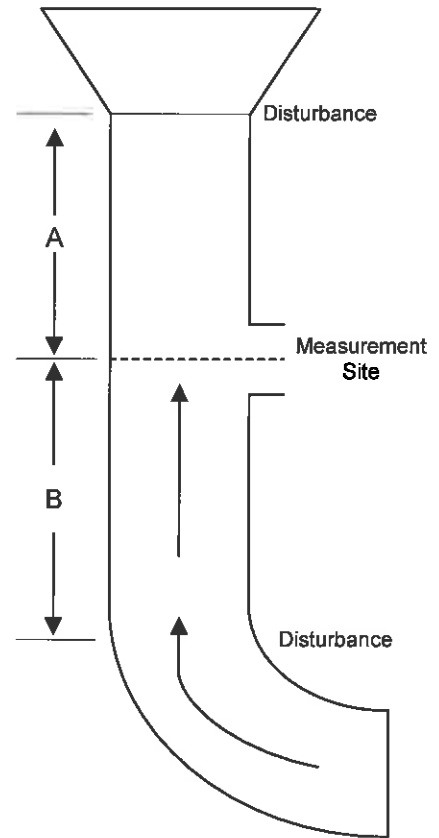
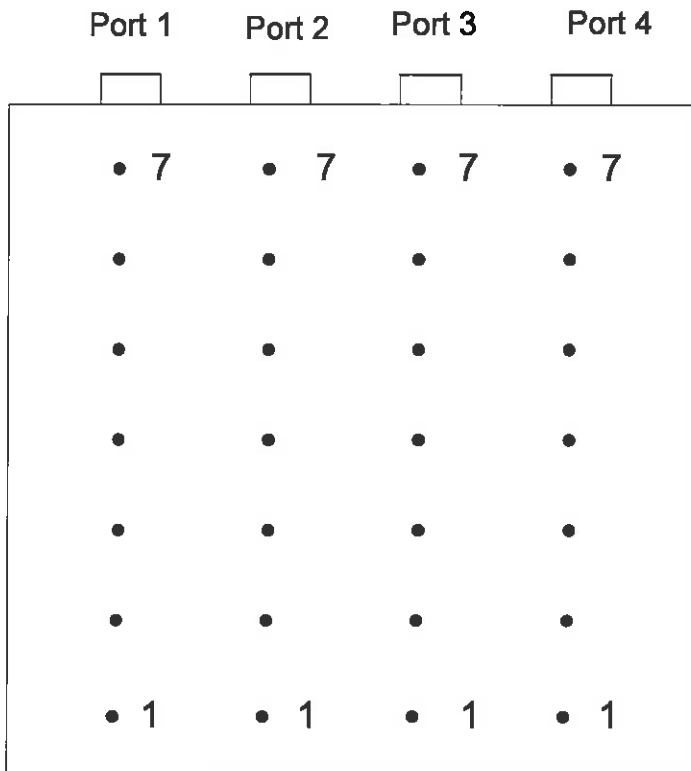
Point	Distance From Wall (in.)
1	11.6
2	34.7
3	57.9
4	81.0
5	104.1
6	127.3
7	150.4

Cross Section of the Wilson ESP 3 Test Location
 Big Rivers Electric Corporation

Figure 3



Up



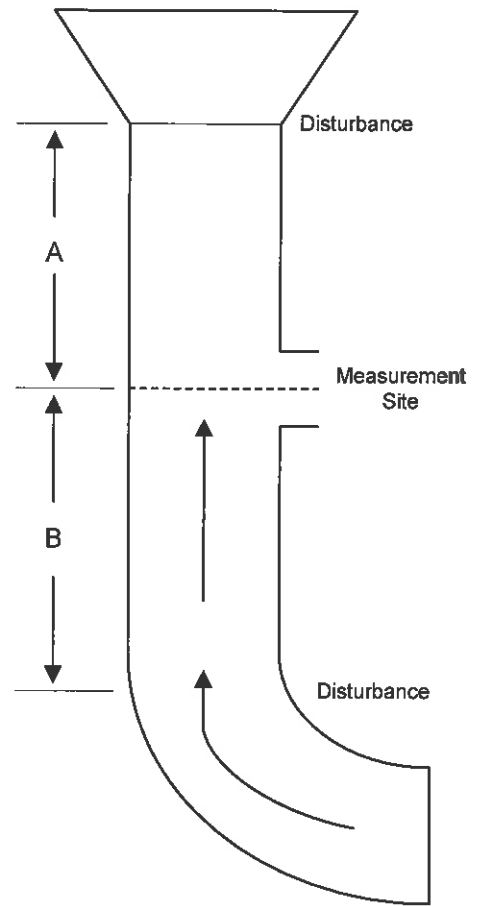
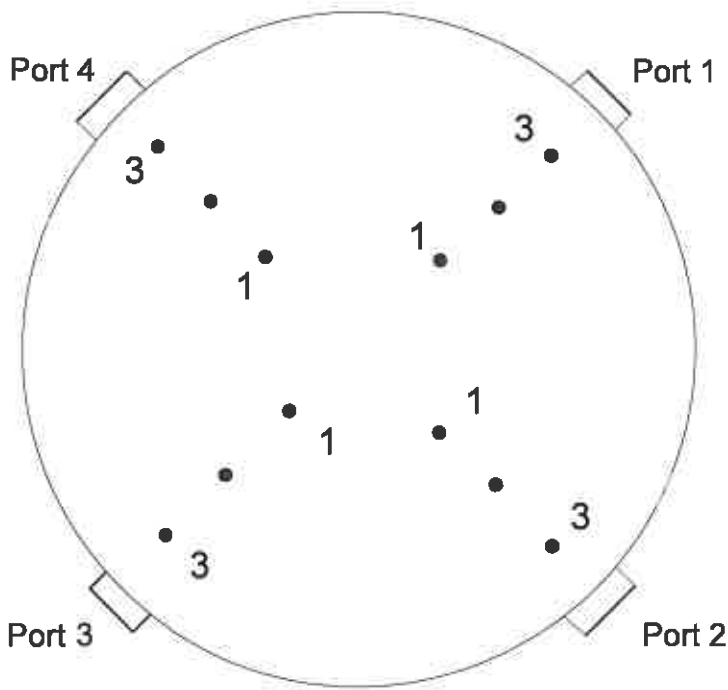
Dimensions (in.) 162.0 X 162.0
 Port Length (in.) 43.0

Point	Distance From Wall (in.)
1	11.6
2	34.7
3	57.9
4	81.0
5	104.1
6	127.3
7	150.4

Cross Section of the Wilson ESP 4 Test Location
 Big Rivers Electric Corporation

Figure 4





Diameter (in.) 408
Port Length (in.) 17.3

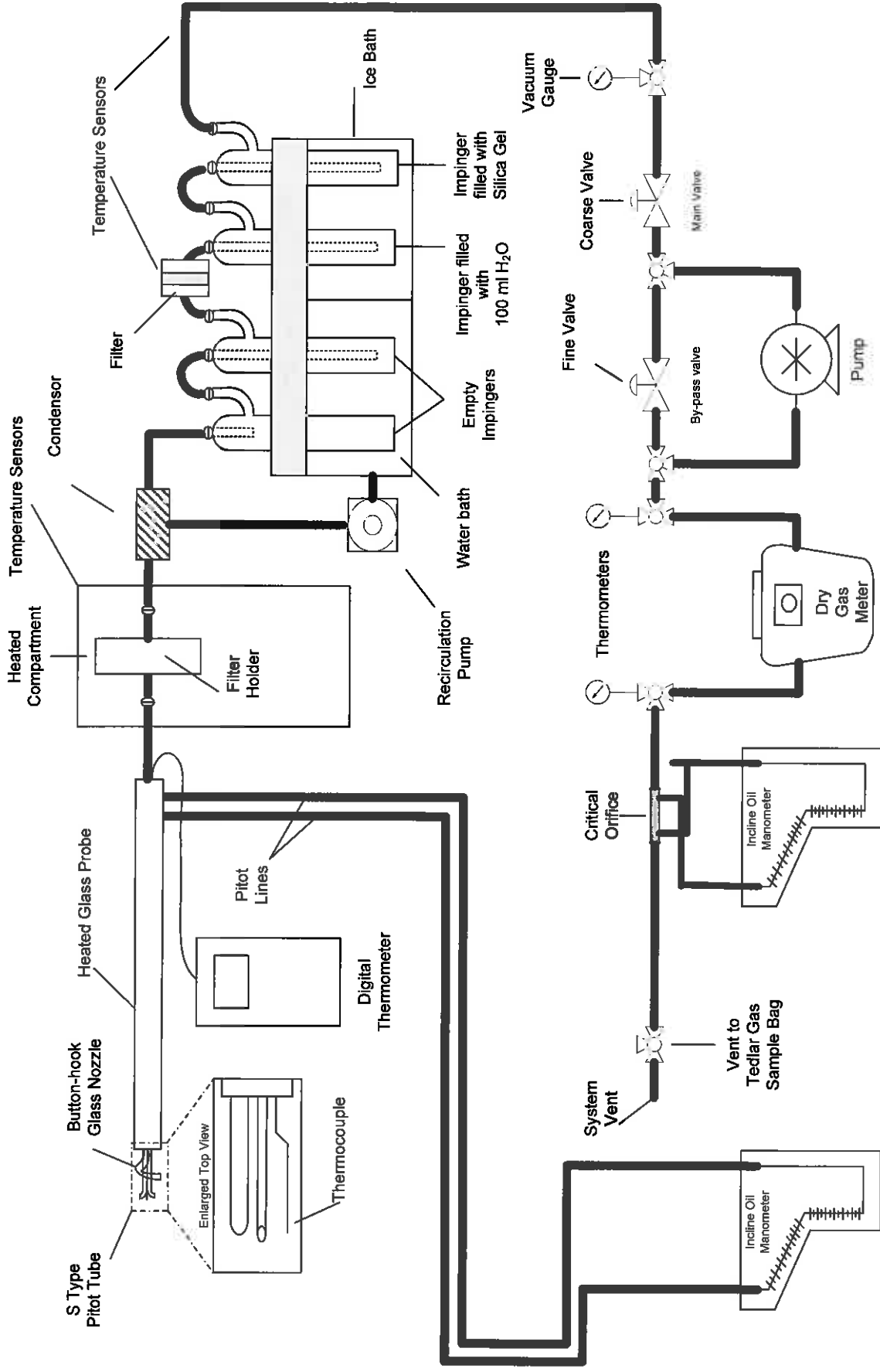
<u>Point</u>	<u>Distance From Wall (in.)</u>
1	120.8
2	59.6
3	18.0

Cross Section of the Wilson Station Stack Test Location
Big Rivers Electric Corporation

Figure 5



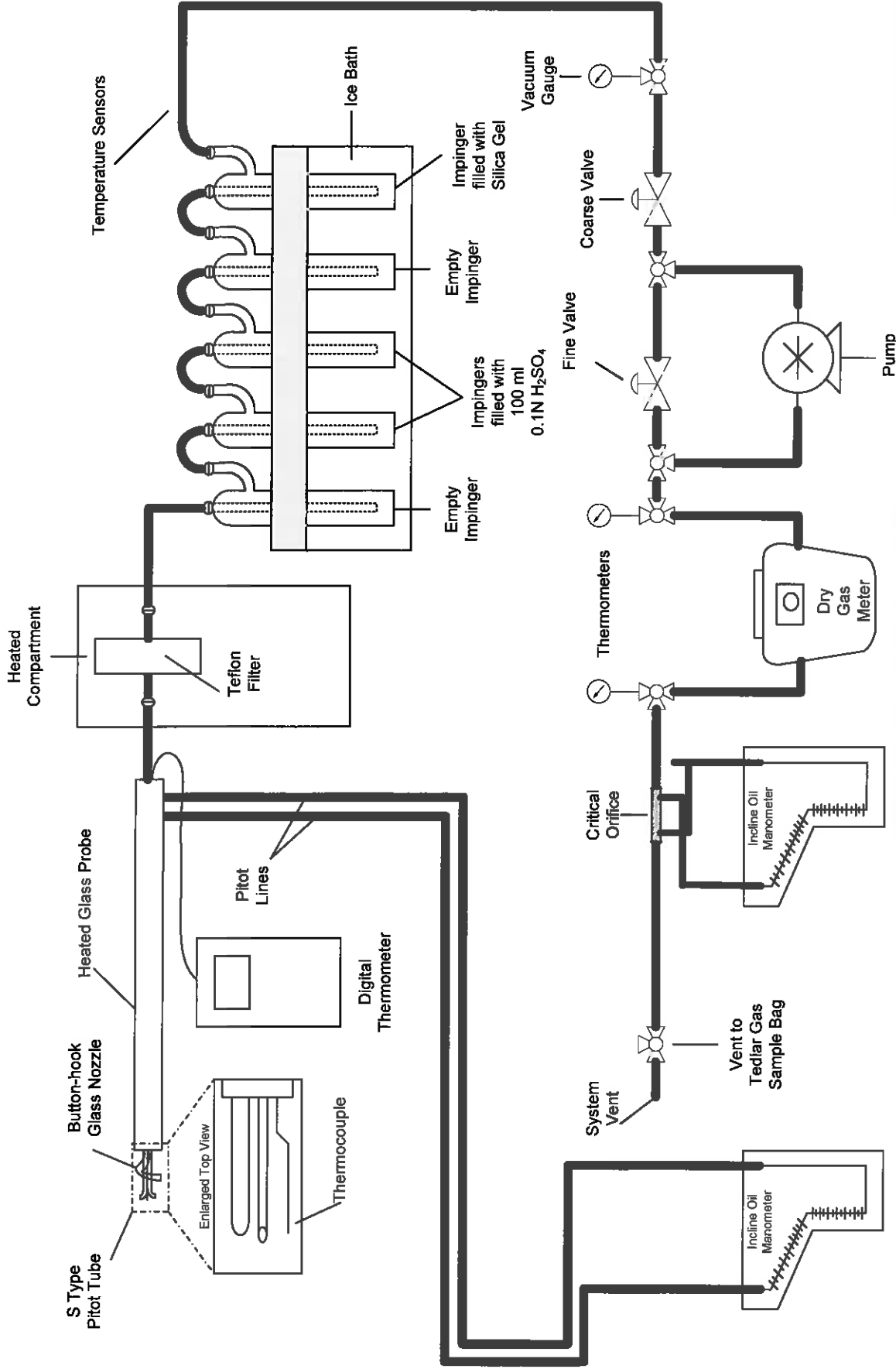
AIRTECH
Environmental
Services Inc.



EPA Methods 2, 3, 4, 5 and 202:
Total Particulate Sampling Train

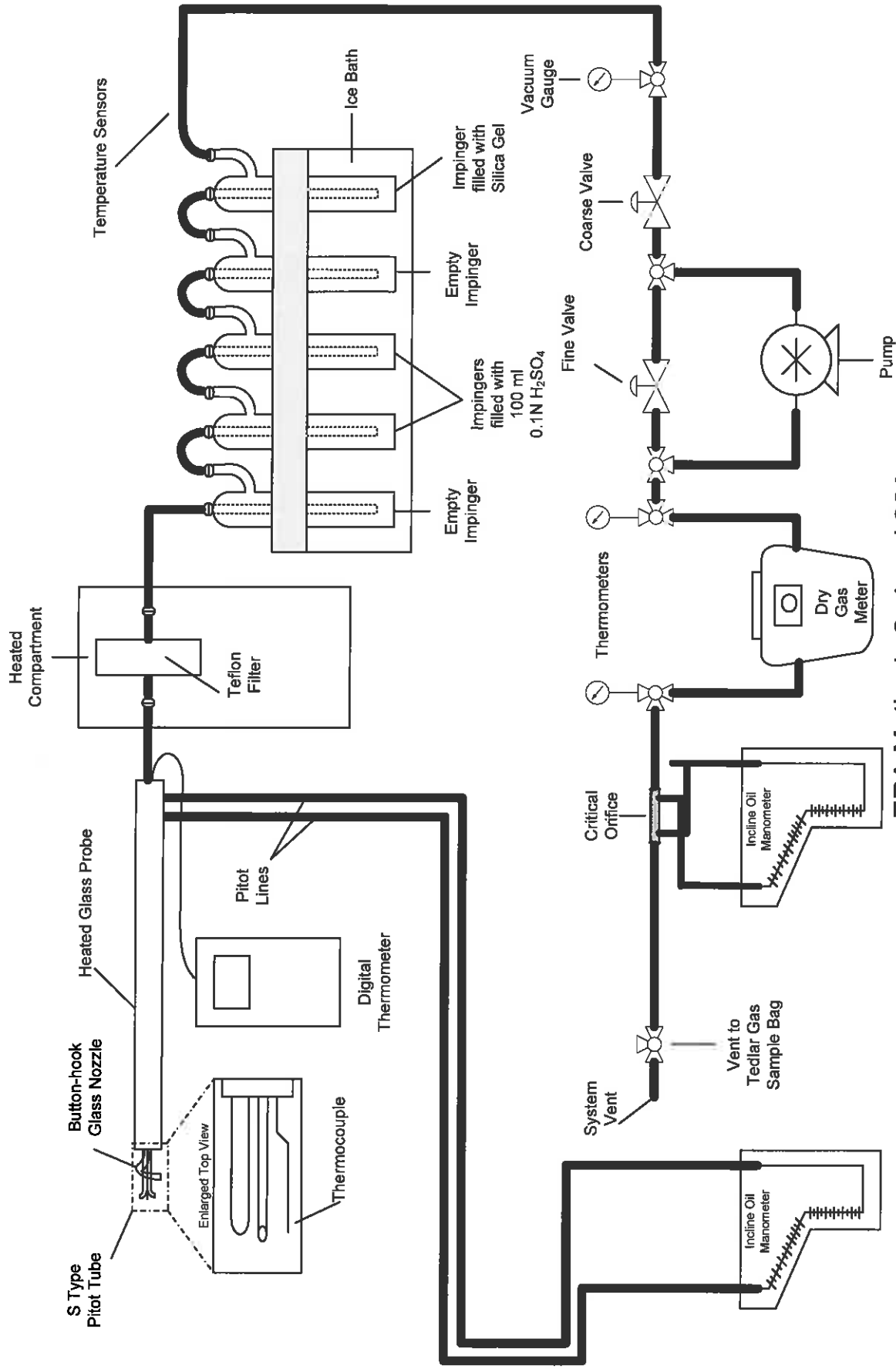
Figure 6





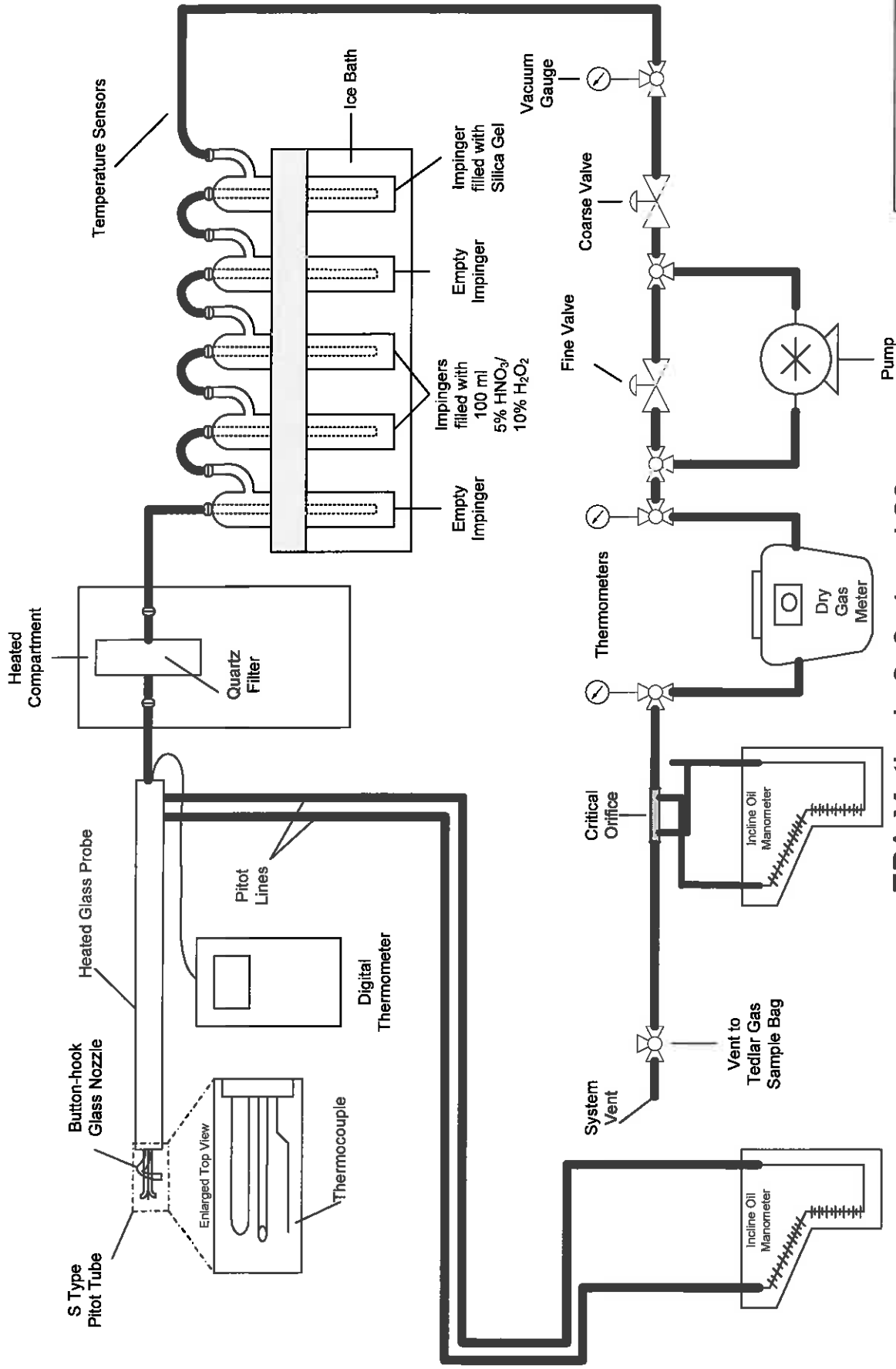
EPA Methods 2, 4 and 26:
Hydrogen Chloride and Hydrogen Fluoride Sampling Train

Figure 7



EPA Methods 2, 4 and 26A:
Hydrogen Chloride and Hydrogen Fluoride Sampling Train

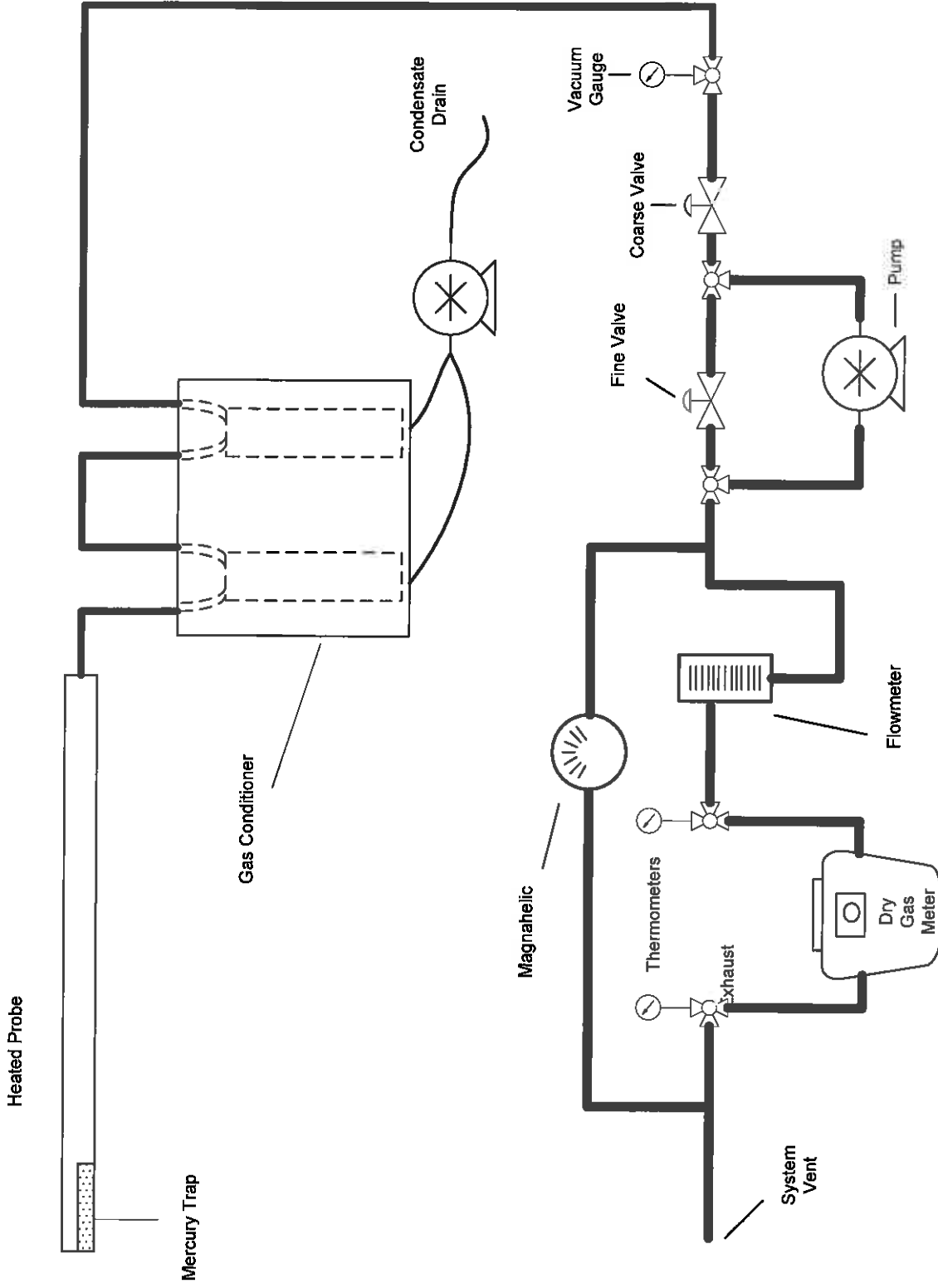
Figure 8



EPA Methods 2, 3, 4 and 29:
Multi-Metals Sampling Train

Figure 9





**EPA Method 30B:
Total Vapor Phase Mercury Sampling Train**

Figure 10