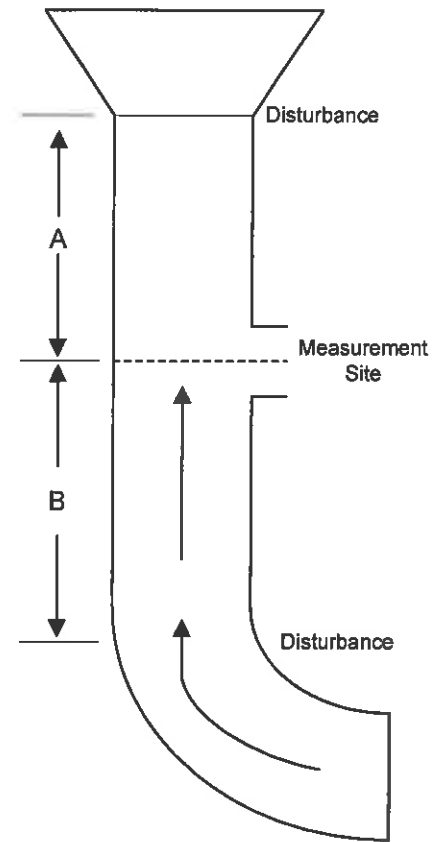
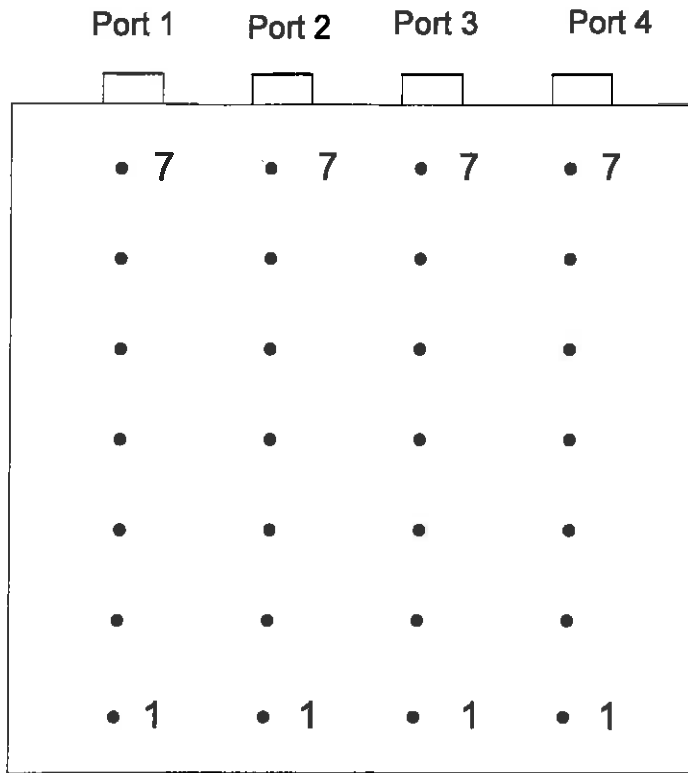


Up



Dimensions (in.) 162.0 X 162.0
 Port Length (in.) 43.0

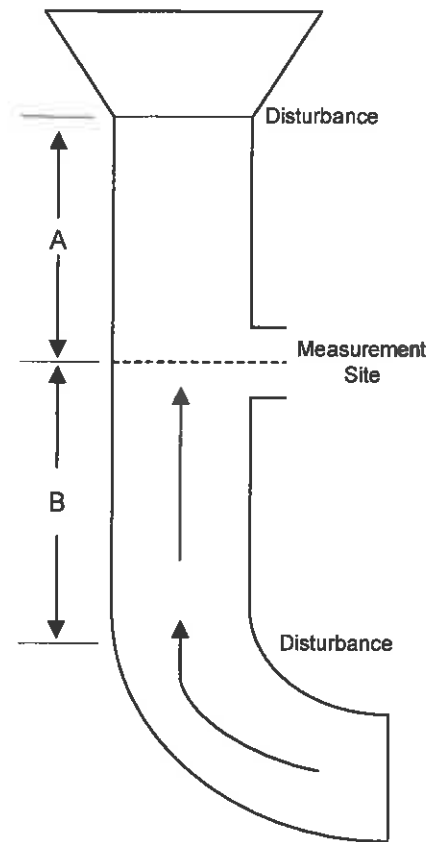
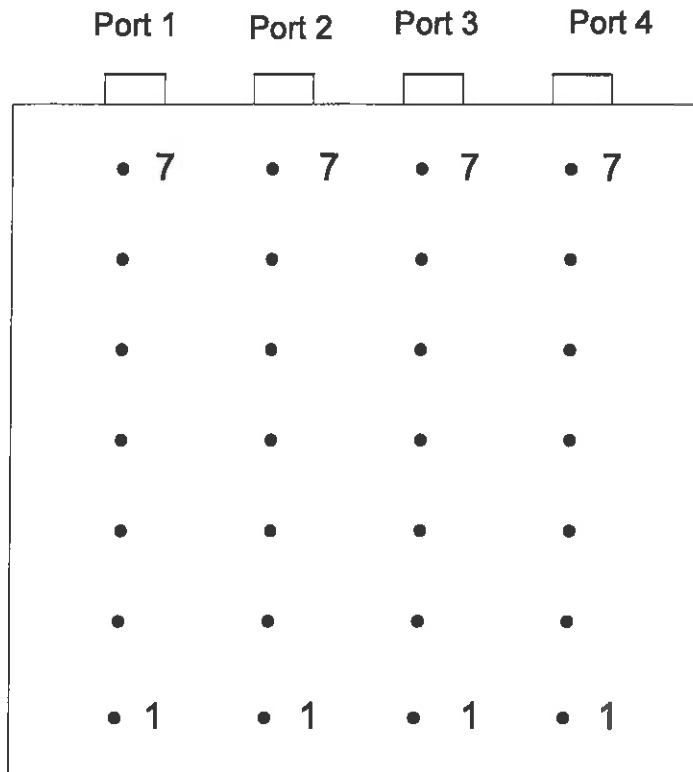
Point	Distance From Wall (in.)
1	11.6
2	34.7
3	57.9
4	81.0
5	104.1
6	127.3
7	150.4

Cross Section of the Wilson ESP 1 Test Location
 Big Rivers Electric Corporation

Figure 1



Up ↑



Dimensions (in.) 162.0 X 162.0
 Port Length (in.) 43.0

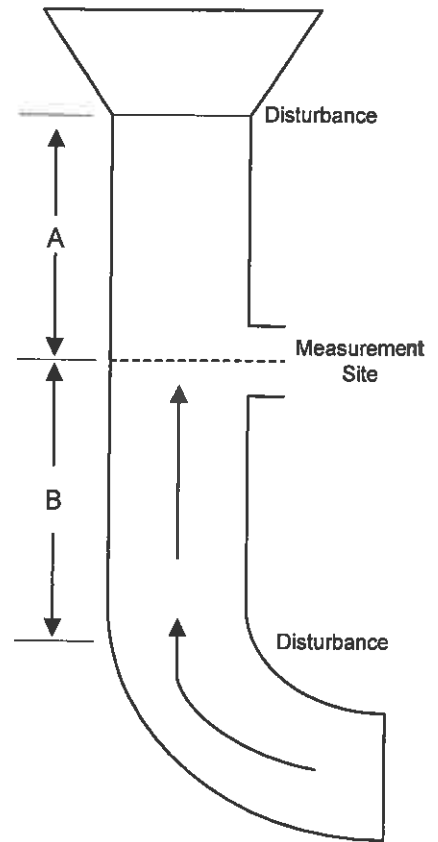
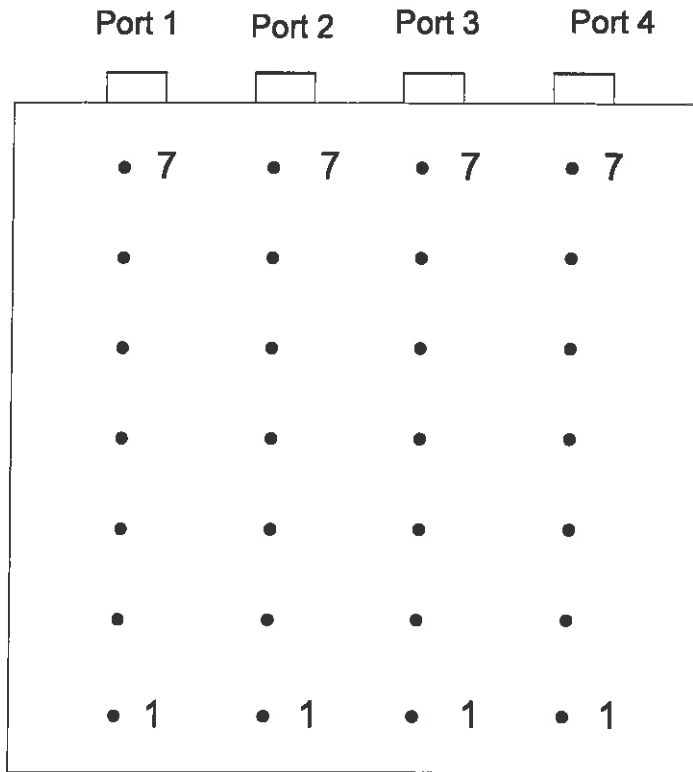
Point	Distance From Wall (in.)
1	11.6
2	34.7
3	57.9
4	81.0
5	104.1
6	127.3
7	150.4

Cross Section of the Wilson ESP 2 Test Location
 Big Rivers Electric Corporation

Figure 2



Up ↑



Dimensions (in.) 162.0 X 162.0

Port Length (in.) 43.0

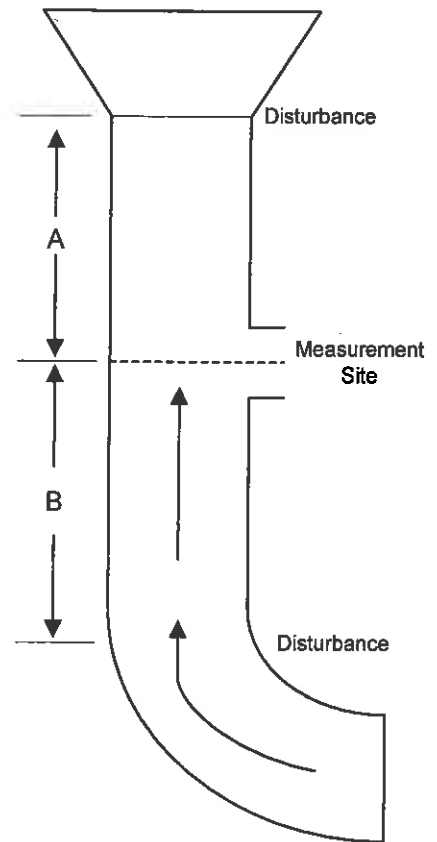
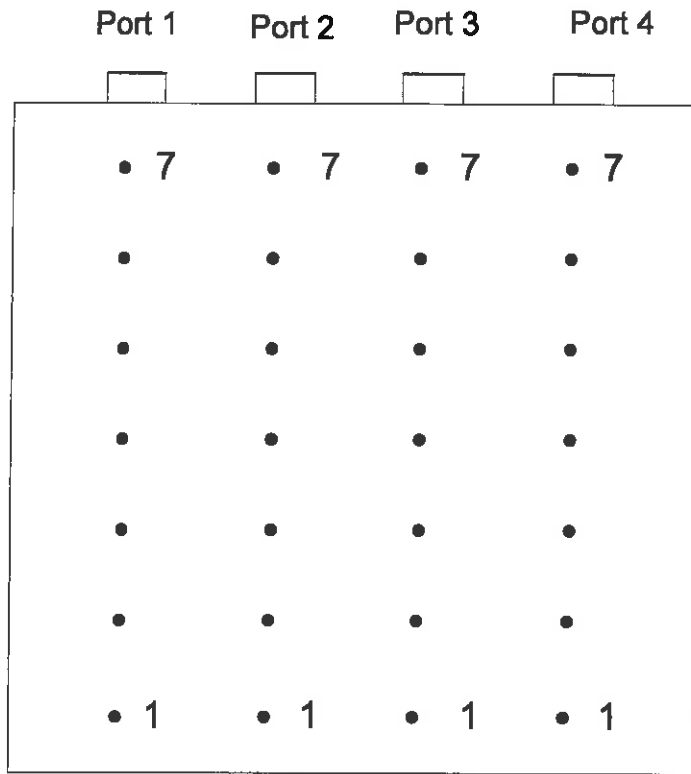
Point	Distance From Wall (in.)
1	11.6
2	34.7
3	57.9
4	81.0
5	104.1
6	127.3
7	150.4

Cross Section of the Wilson ESP 3 Test Location
Big Rivers Electric Corporation

Figure 3



Up ↑



Dimensions (in.) 162.0 X 162.0
 Port Length (in.) 43.0

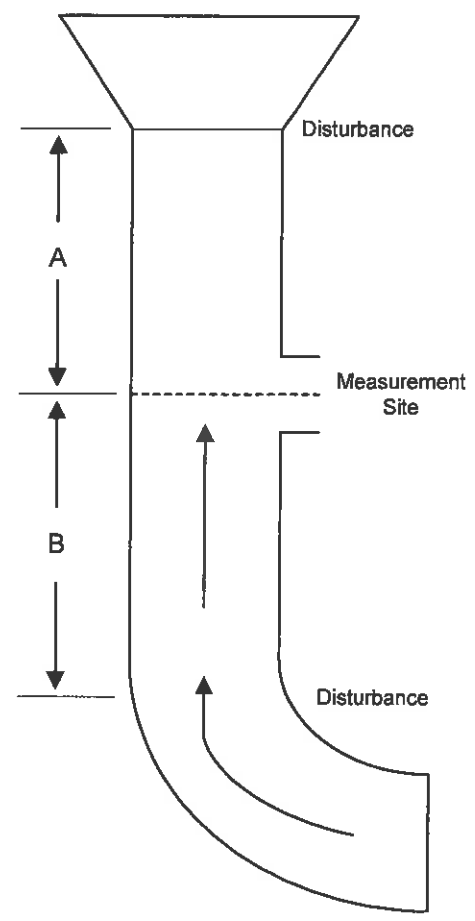
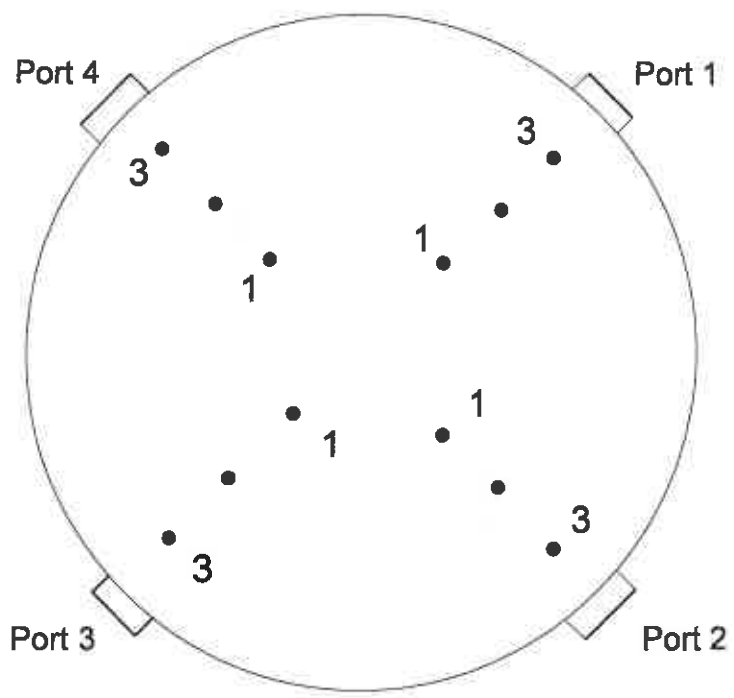
Point	Distance From Wall (in.)
1	11.6
2	34.7
3	57.9
4	81.0
5	104.1
6	127.3
7	150.4

Cross Section of the Wilson ESP 4 Test Location
 Big Rivers Electric Corporation

Figure 4



AIRTECH
 Environmental
 Services Inc.



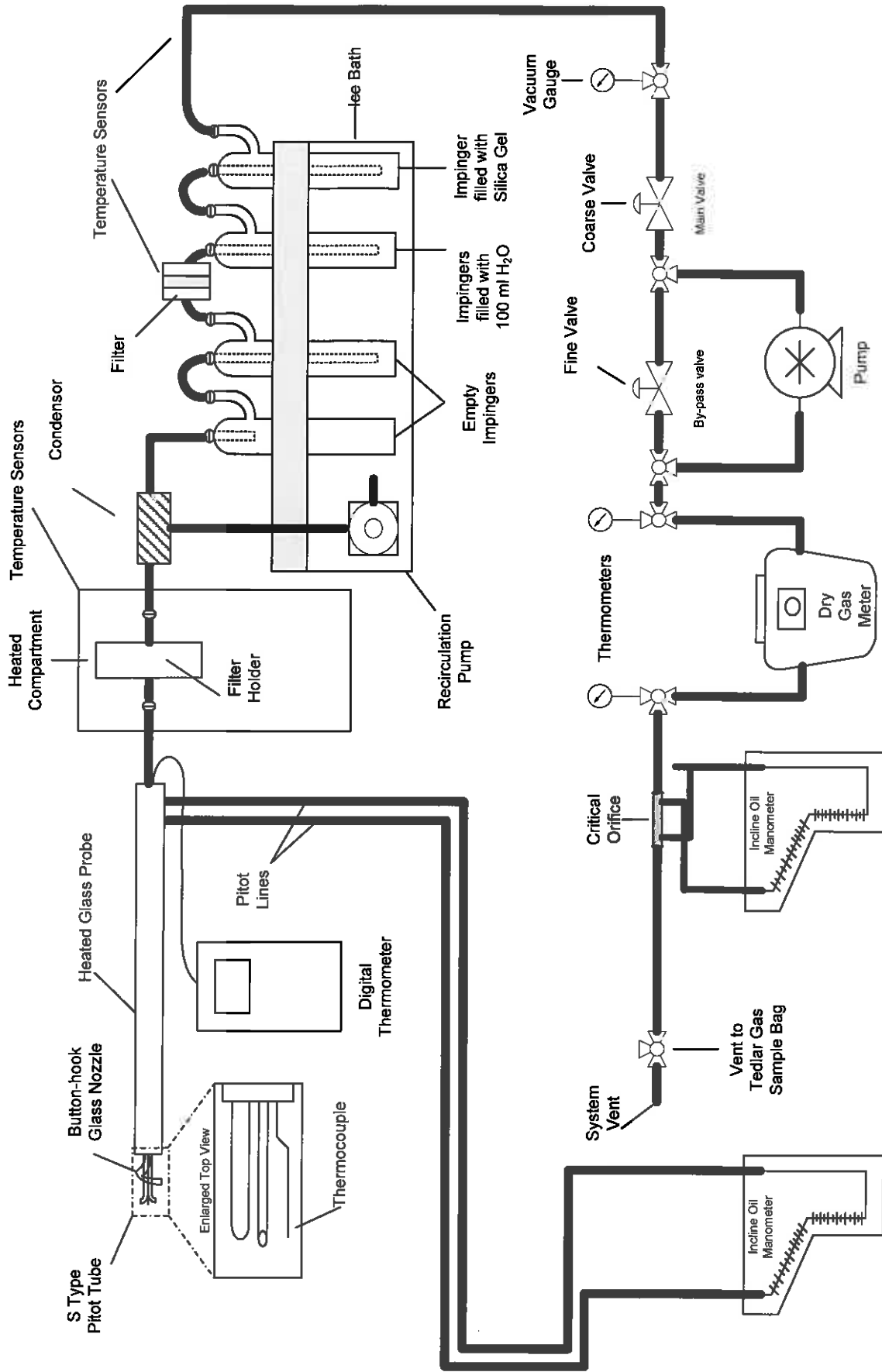
Diameter (in.) 408
Port Length (in.) 17.3

Point	Distance From Wall (in.)
1	120.8
2	59.6
3	18.0

Cross Section of the Wilson Station Stack Test Location
Big Rivers Electric Corporation

Figure 5

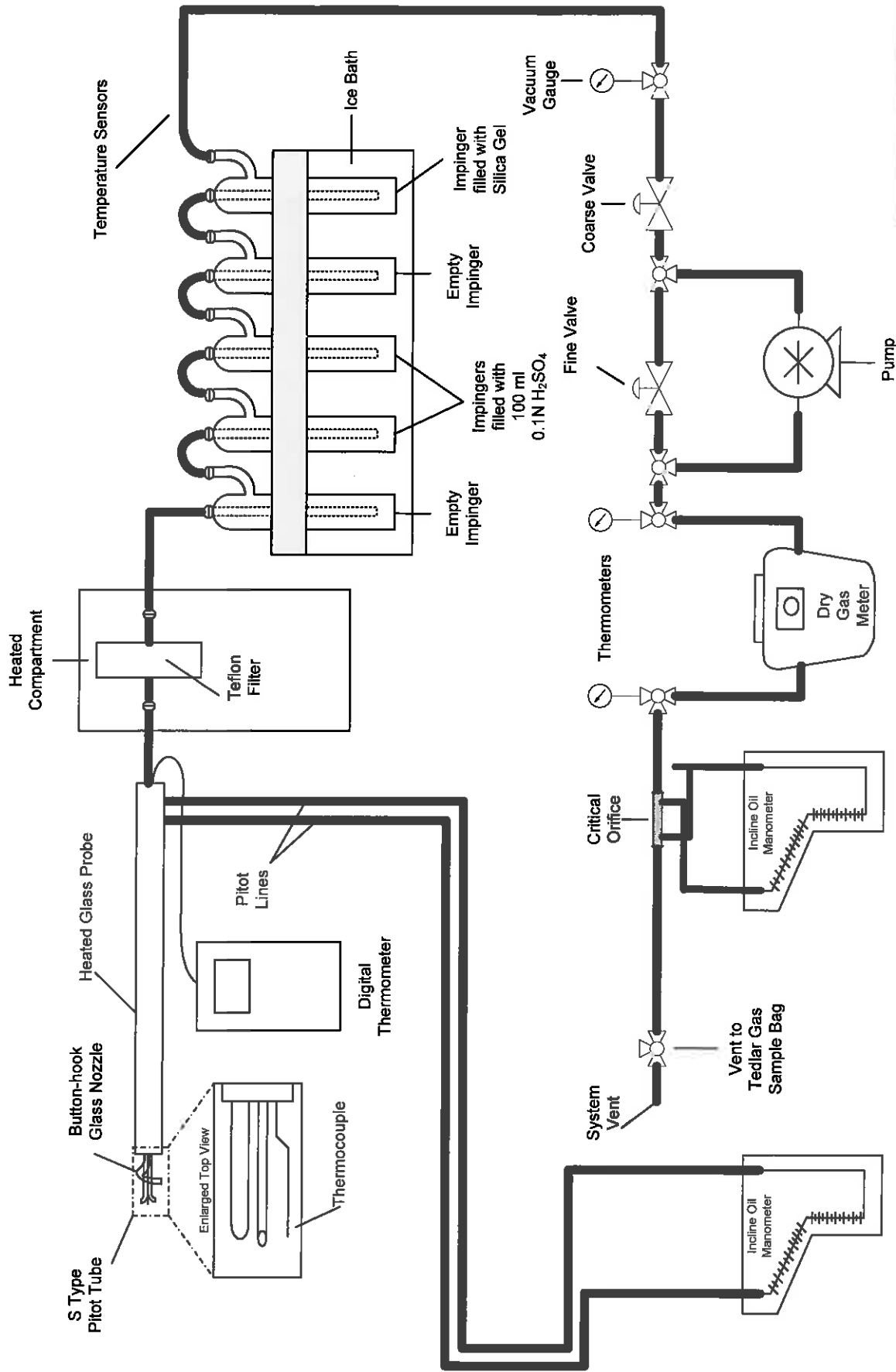




EPA Methods 2, 3, 4, 5B and 202:
Total Particulate Sampling Train

Figure 6

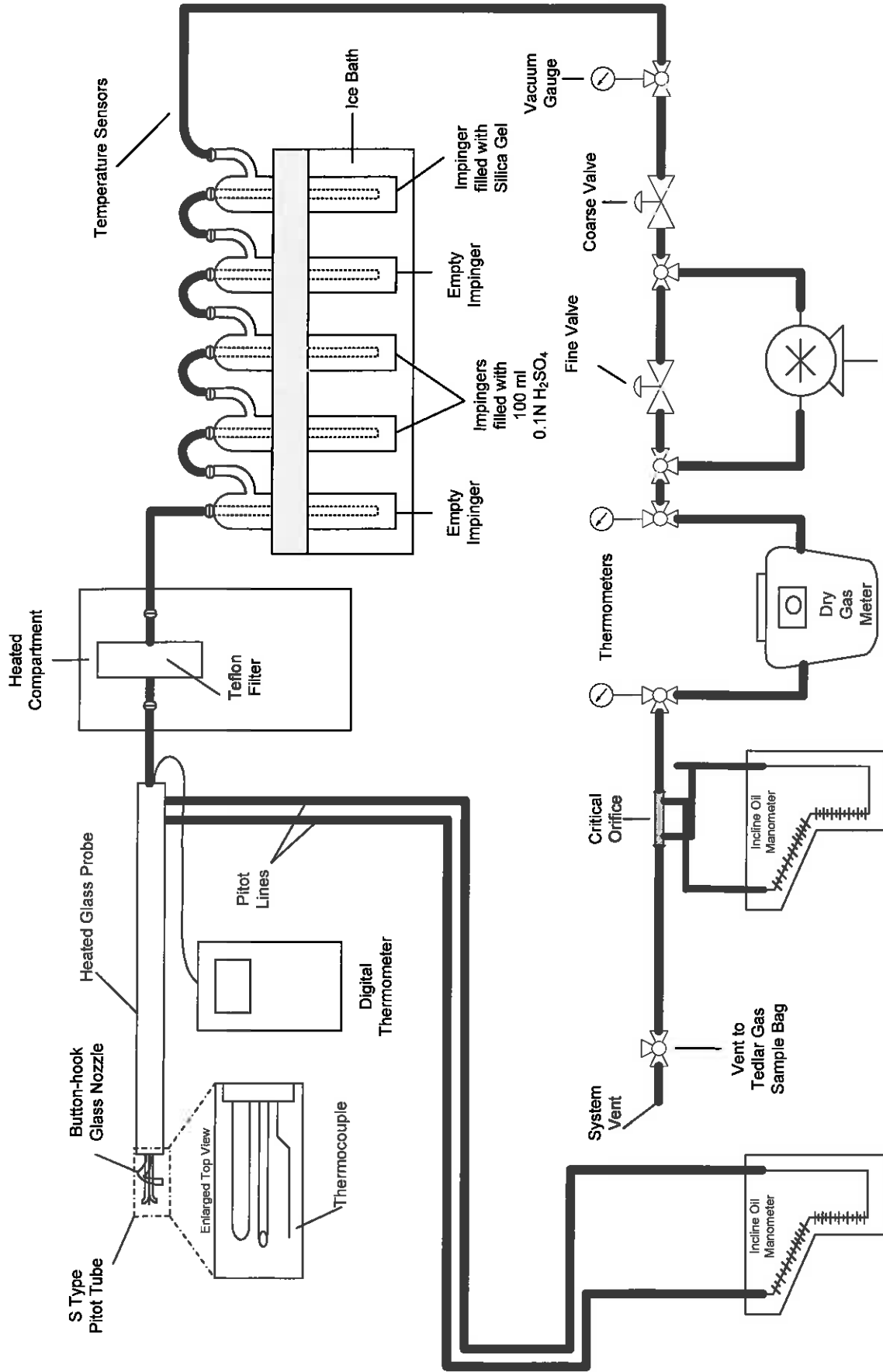




EPA Methods 2, 4 and 26:
 Hydrogen Chloride and Hydrogen Fluoride Sampling Train

Figure 7

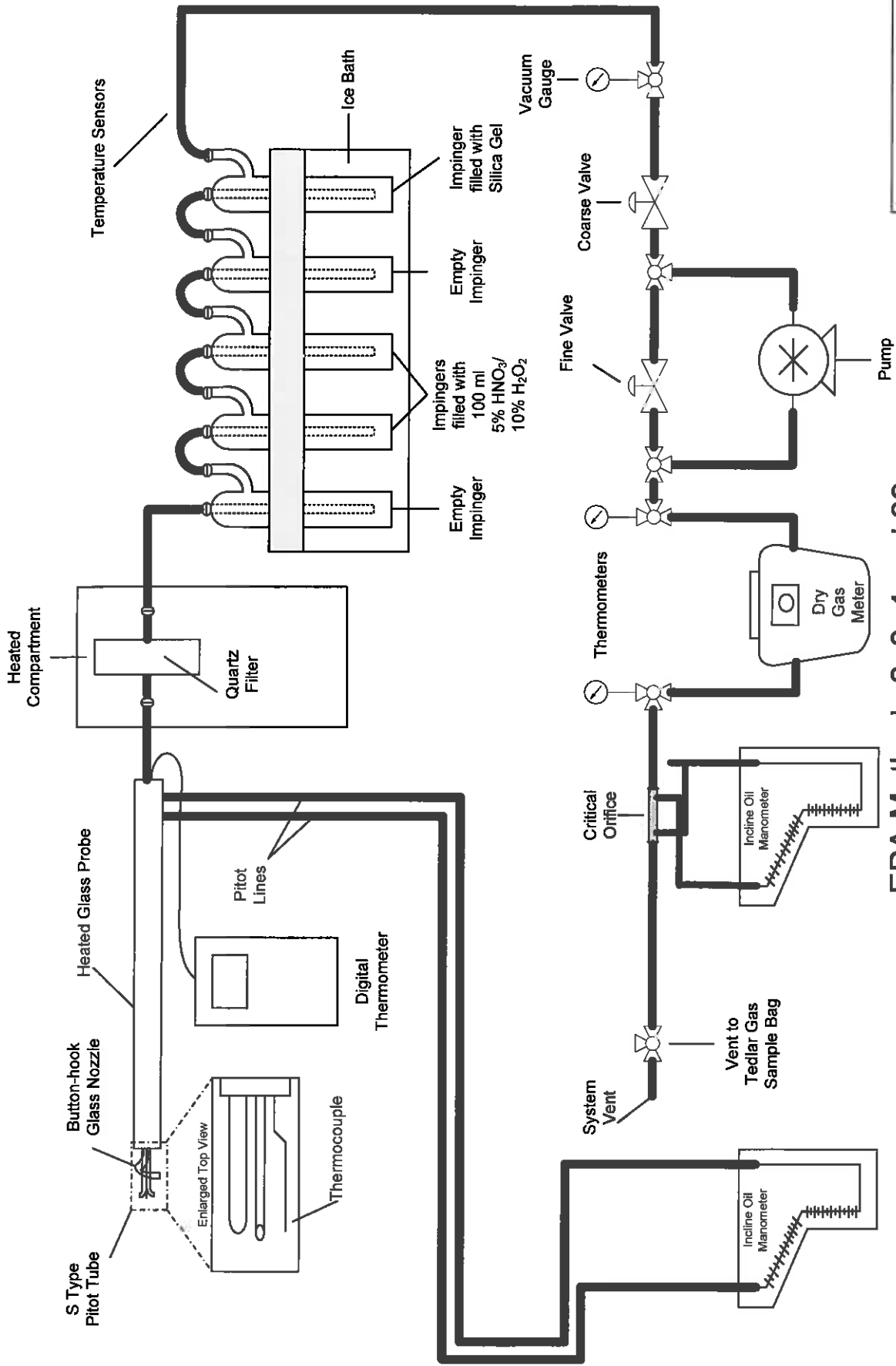




EPA Methods 2, 4 and 26A:
Hydrogen Chloride and Hydrogen Fluoride Sampling Train

Figure 8

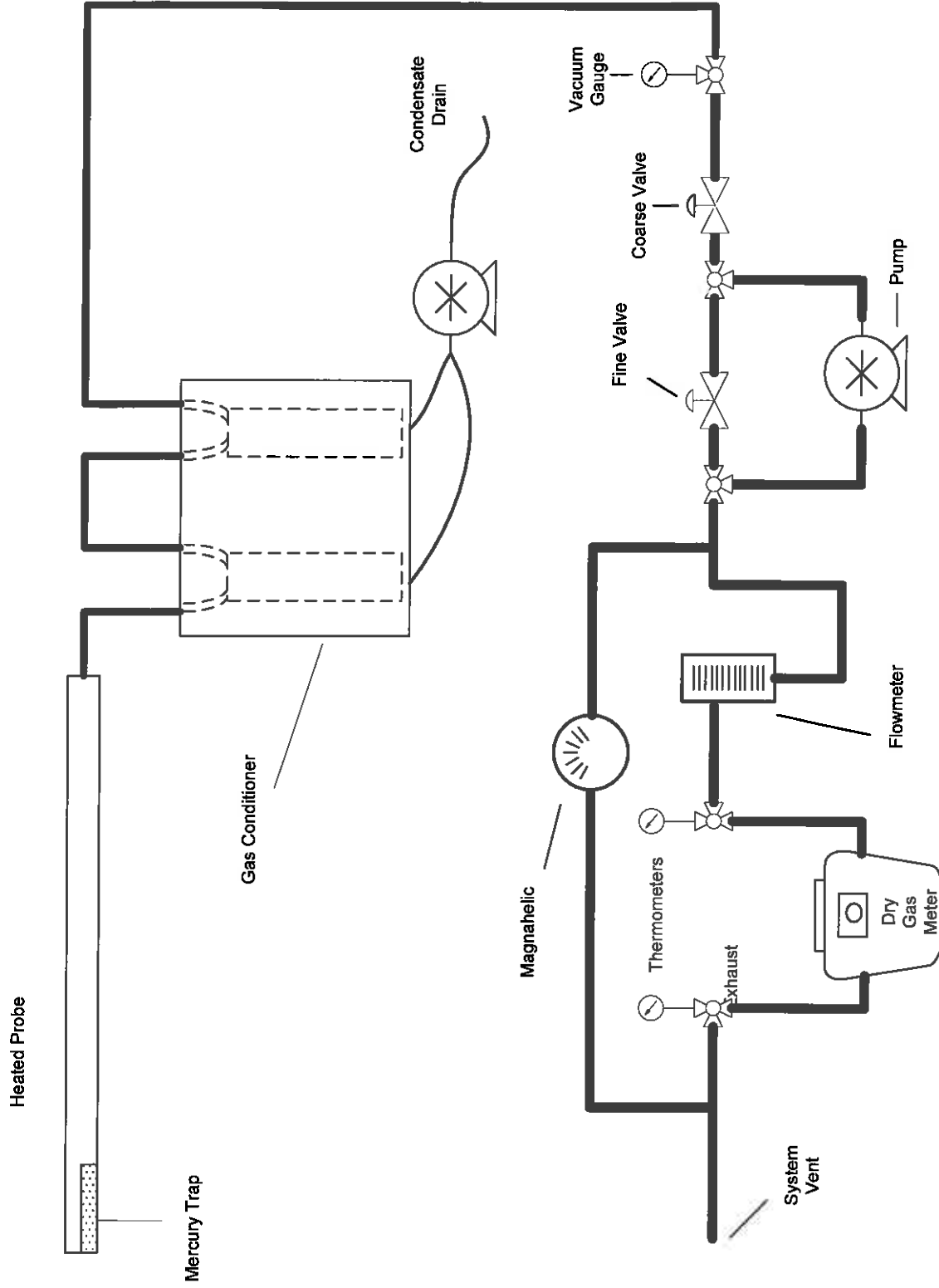




EPA Methods 2, 3, 4 and 29:
Multi-Metals Sampling Train

Figure 9





**EPA Method 30B:
Total Vapor Phase Mercury Sampling Train**

Figure 10