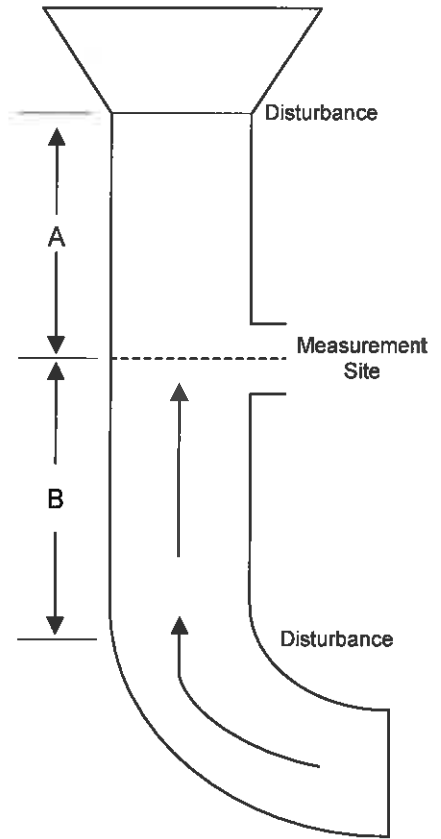
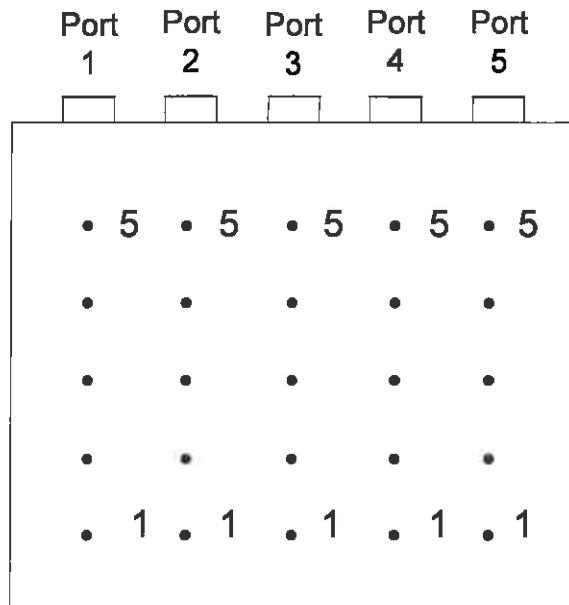


Appendix

Figures

Up



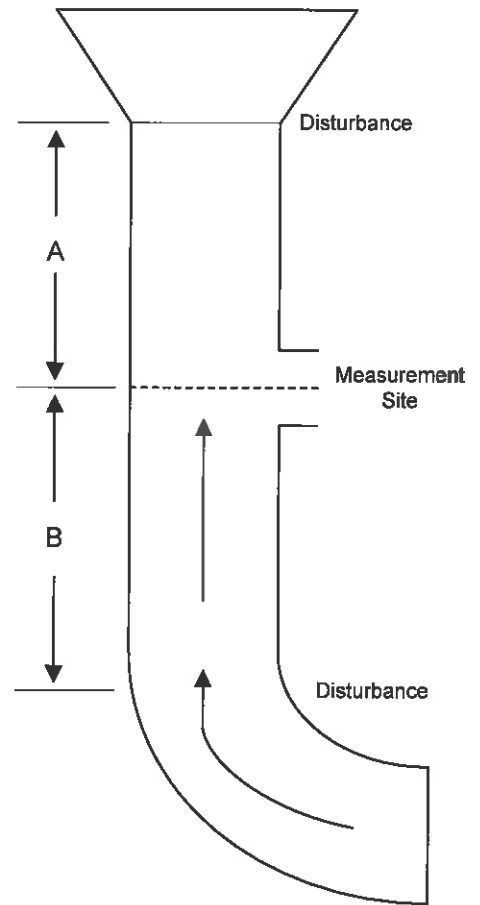
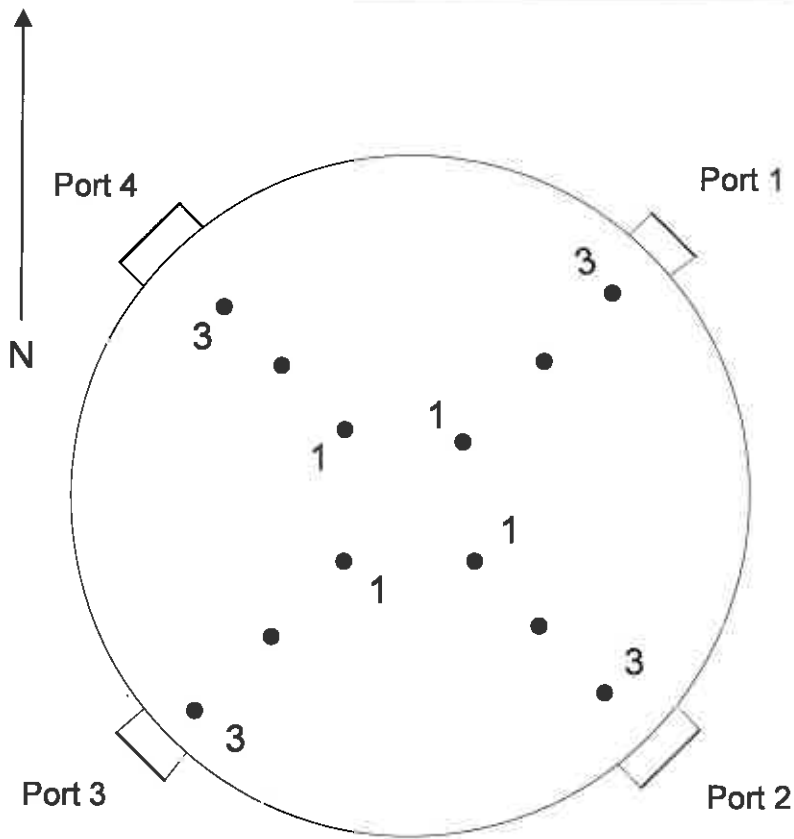
Dimensions (in.) 186 X 139
 Port Length (in.) 30.0

Point	Distance From Wall (in.)
1	13.9
2	41.7
3	69.5
4	97.3
5	125.1

Cross Section of the Henderson Unit 2 Inlet Test Location
 Big Rivers Electric Corporation

Figure 1





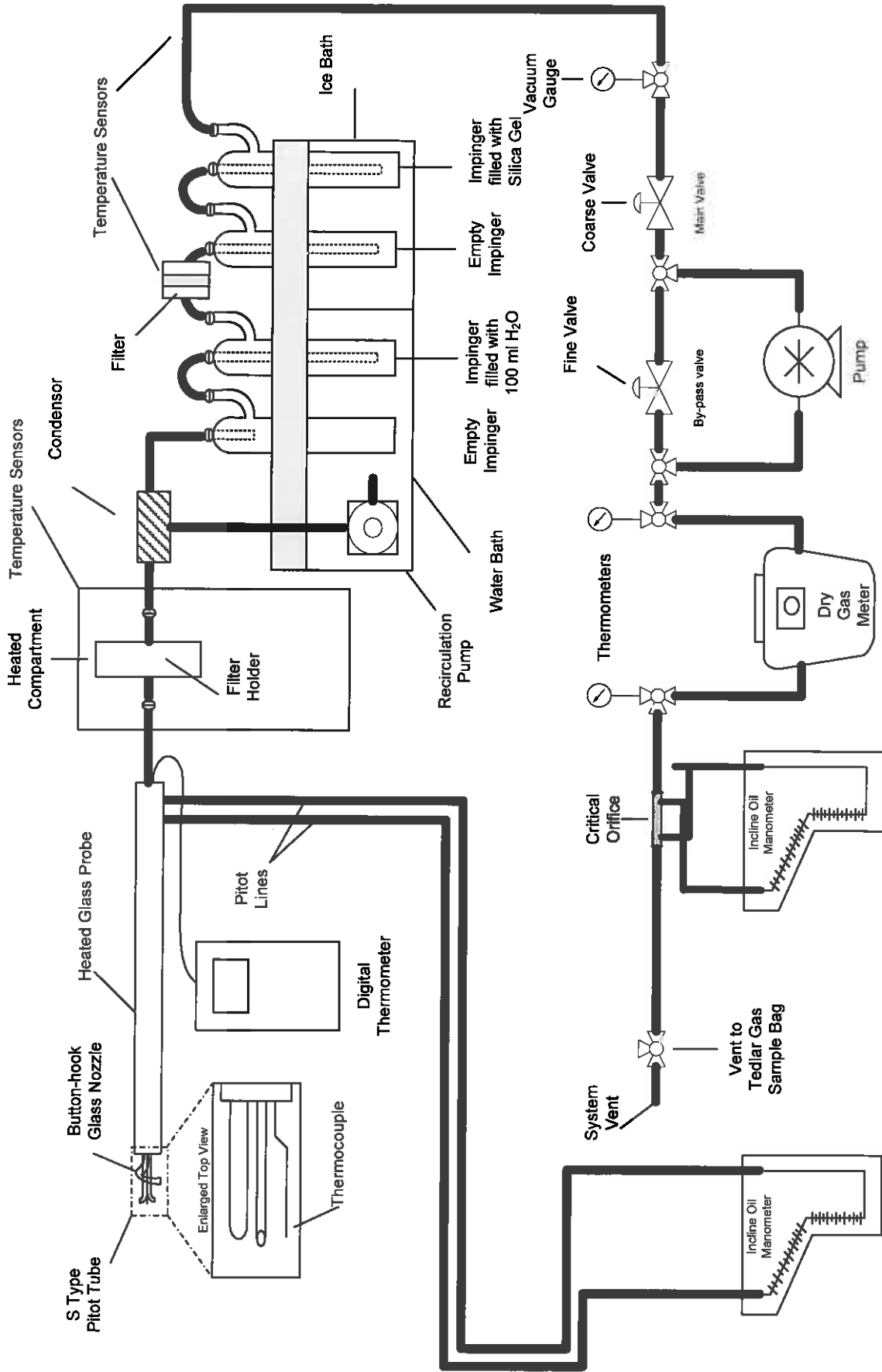
Diameter (in.)	192
Port Length (in.)	14.5
Distance A (Duct Diameters)	8.8
Distance B (Duct Diameters)	8.2

<u>Point</u>	<u>Distance From Wall (in.)</u>
1	56.8
2	28.0
3	8.4

Cross Section of the Henderson Unit 2 Stack Test Location
Big Rivers Electric Corporation

Figure 2

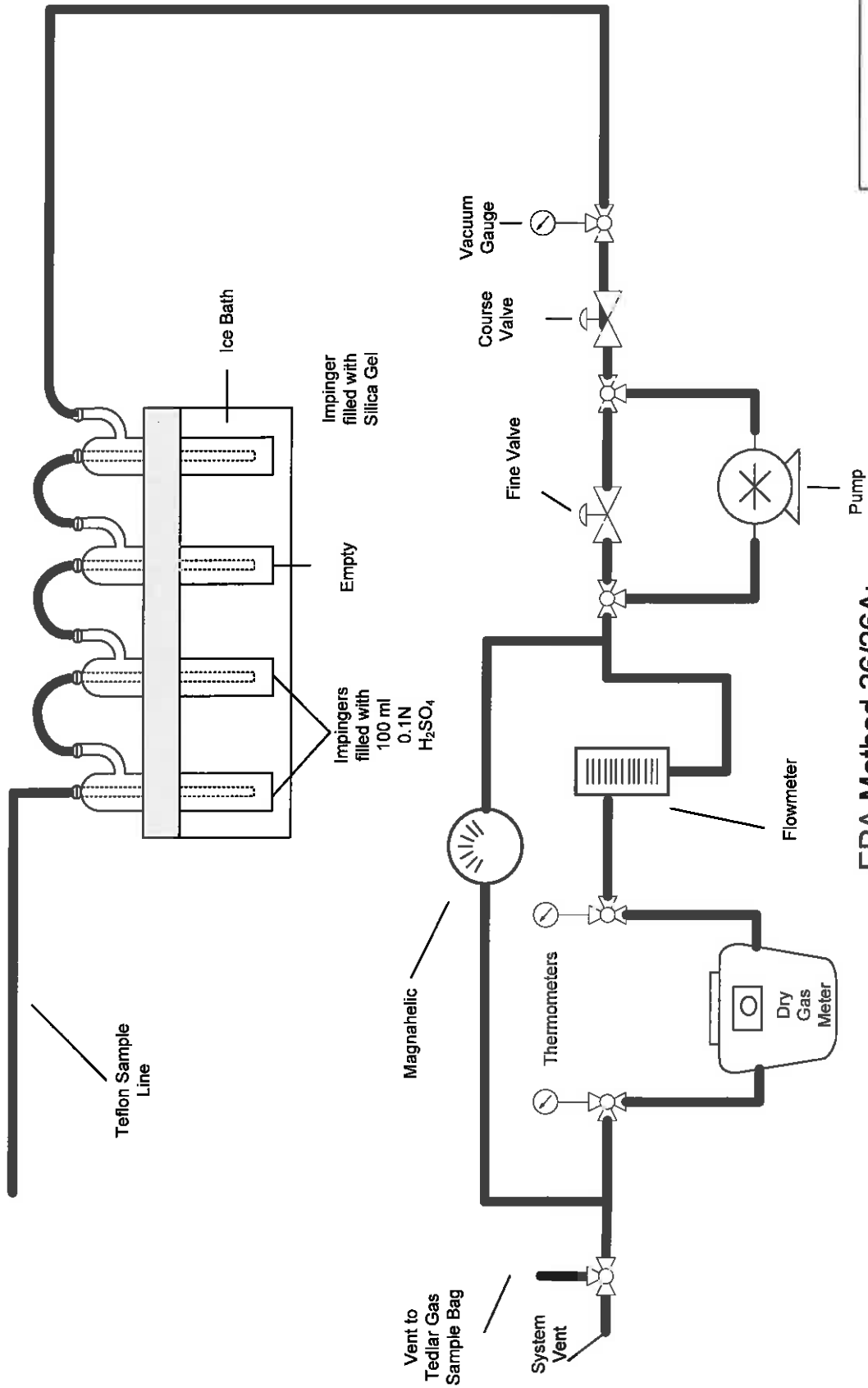




EPA Methods 2, 3, 4, 5B and 202:
Total Particulate Sampling Train

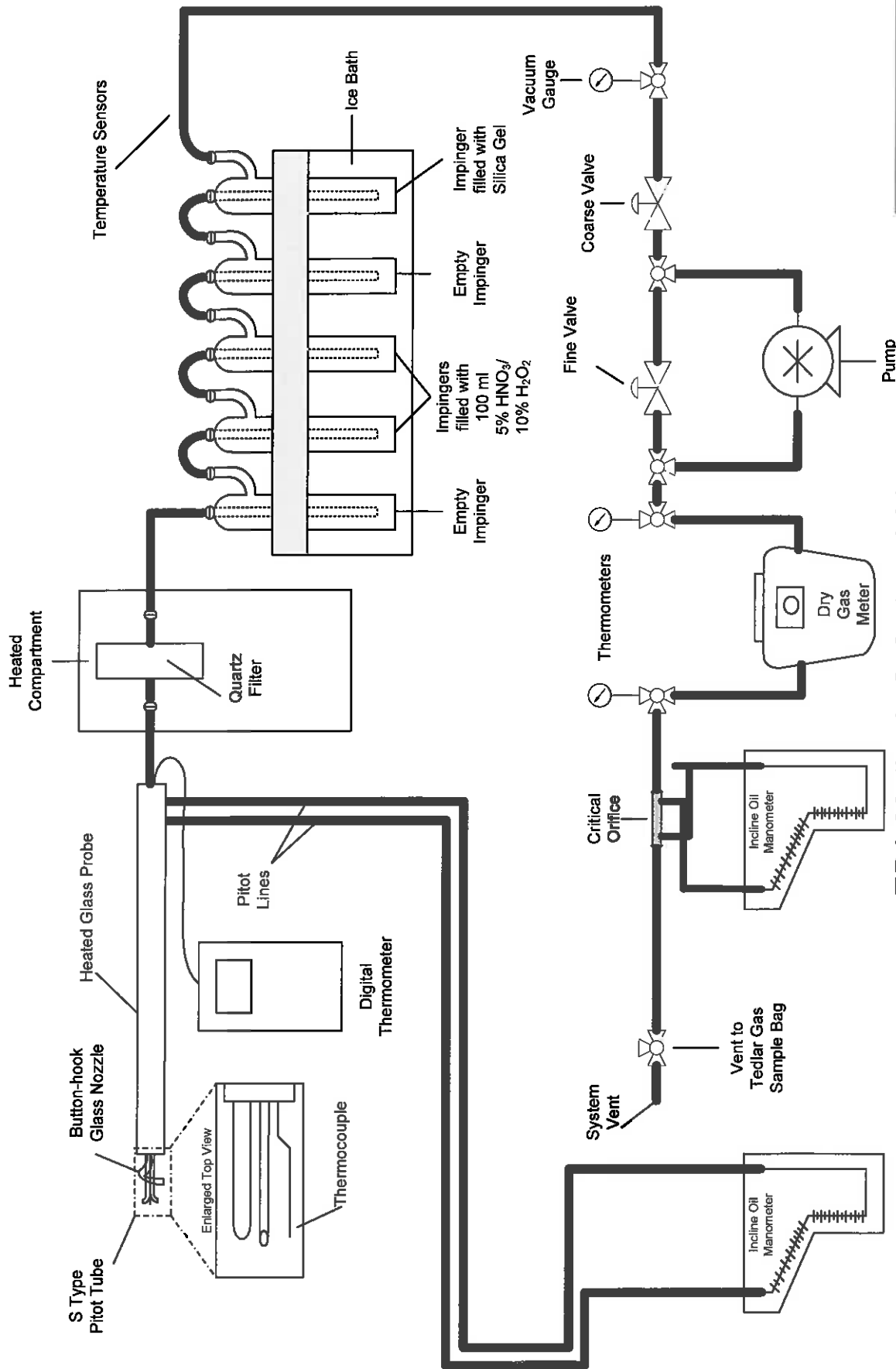
Figure 3





EPA Method 26/26A:
Hydrogen Chloride and Hydrogen Fluoride Sampling Train

Figure 4



EPA Methods 2, 3, 4 and 29:
Multi-Metals Sampling Train

Figure 5



Heated Probe

Mercury Trap

Gas Conditioner

Condensate Drain

Magnahelic

Thermometers

Exhaust

System Vent

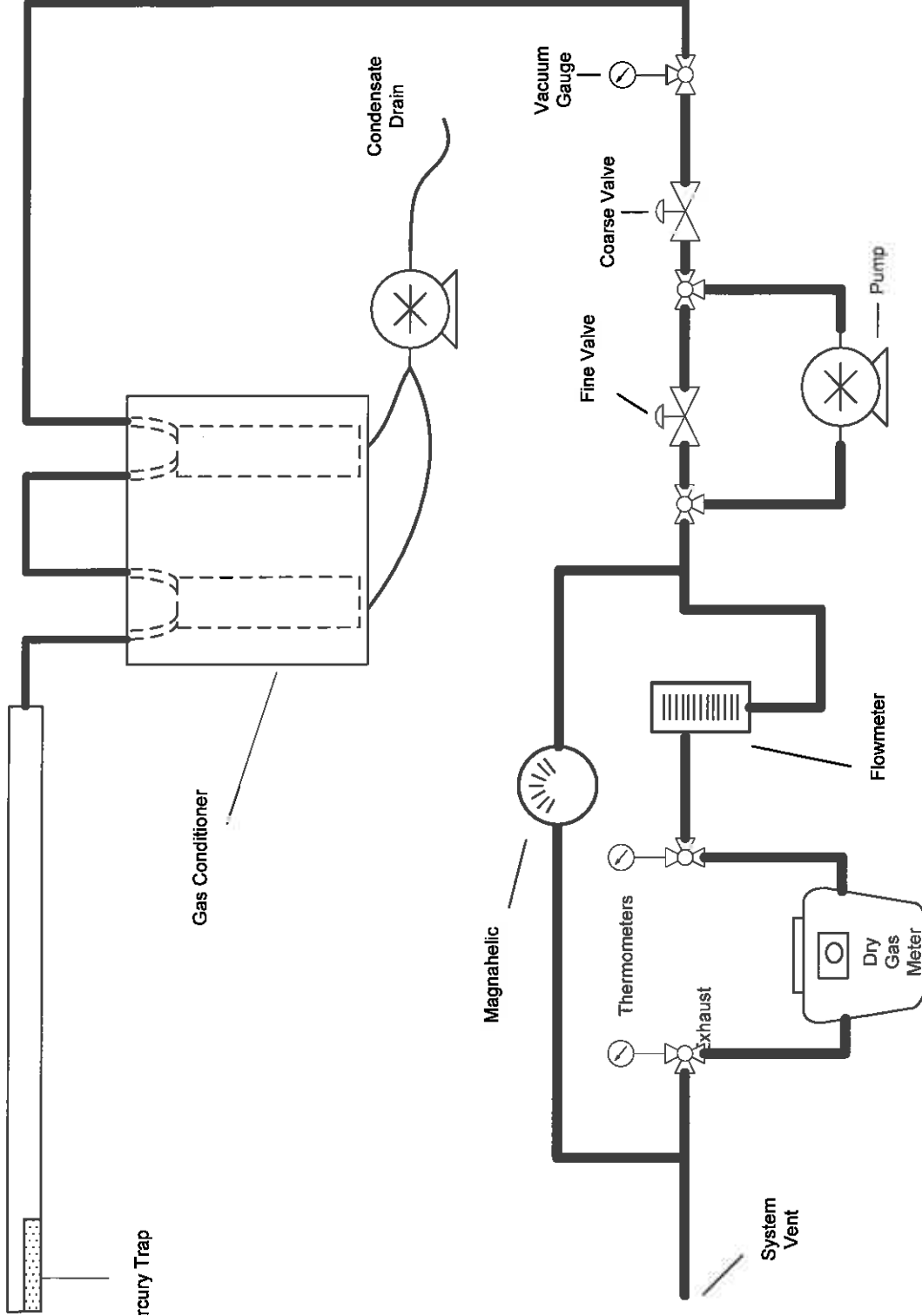
Flowmeter

Pump

Vacuum Gauge

Fine Valve

Coarse Valve



EPA Method 30B:
Total Vapor Phase Mercury Sampling Train

Figure 6