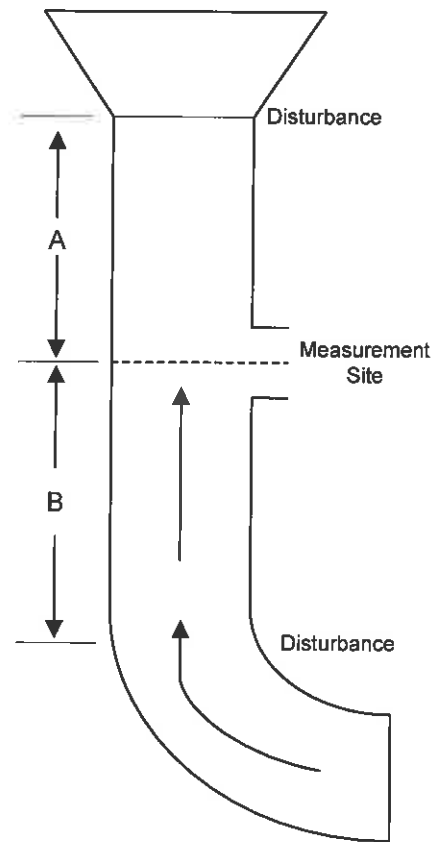
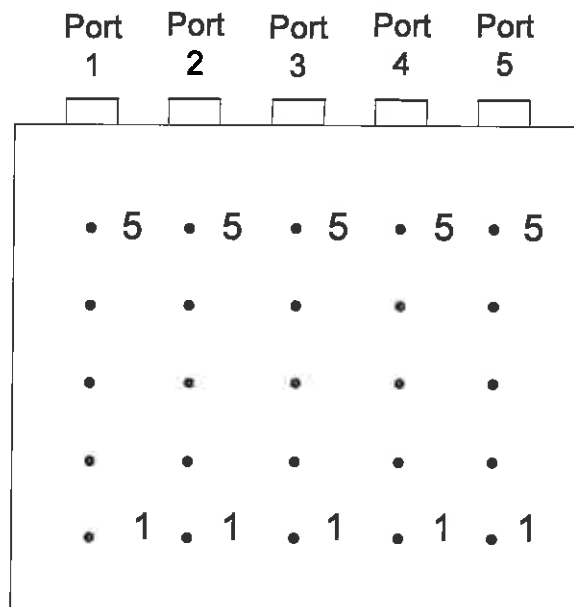


## Appendix

### *Figures*

Up



Dimensions (in.)                      186 X 139  
 Port Length (in.)                      30.0

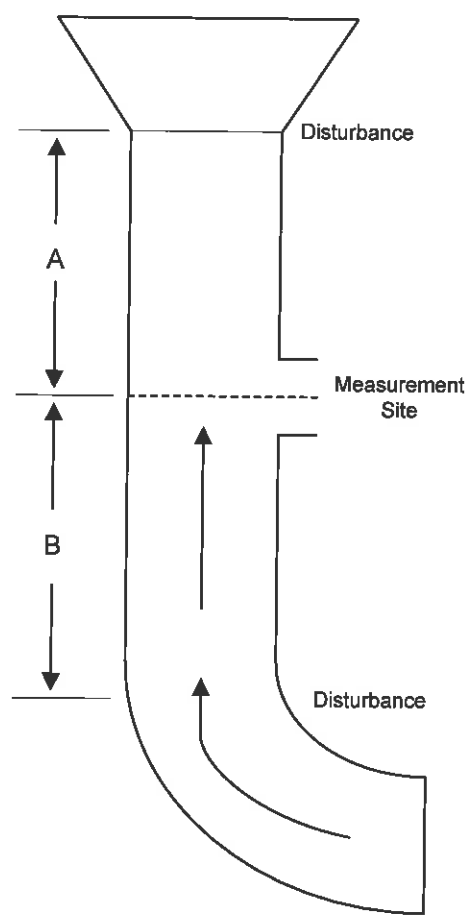
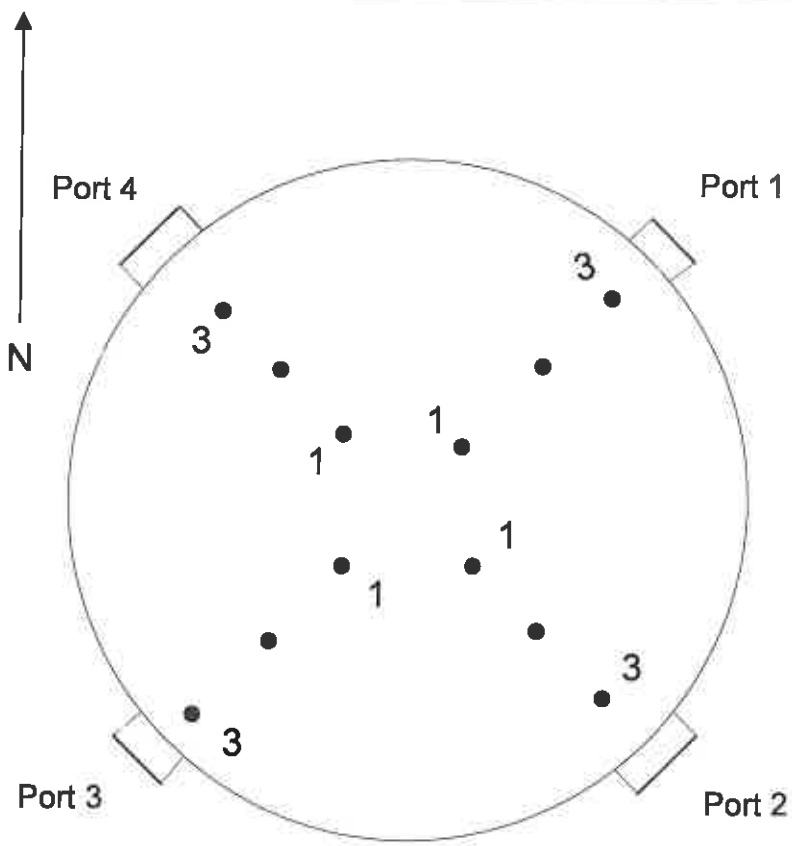
Point	Distance From Wall (in.)
1	13.9
2	41.7
3	69.5
4	97.3
5	125.1

Cross Section of the Henderson Unit 1 Inlet Test Location  
 Big Rivers Electric Corporation

Figure 1



**AIRTECH**  
 Environmental  
 Services Inc.



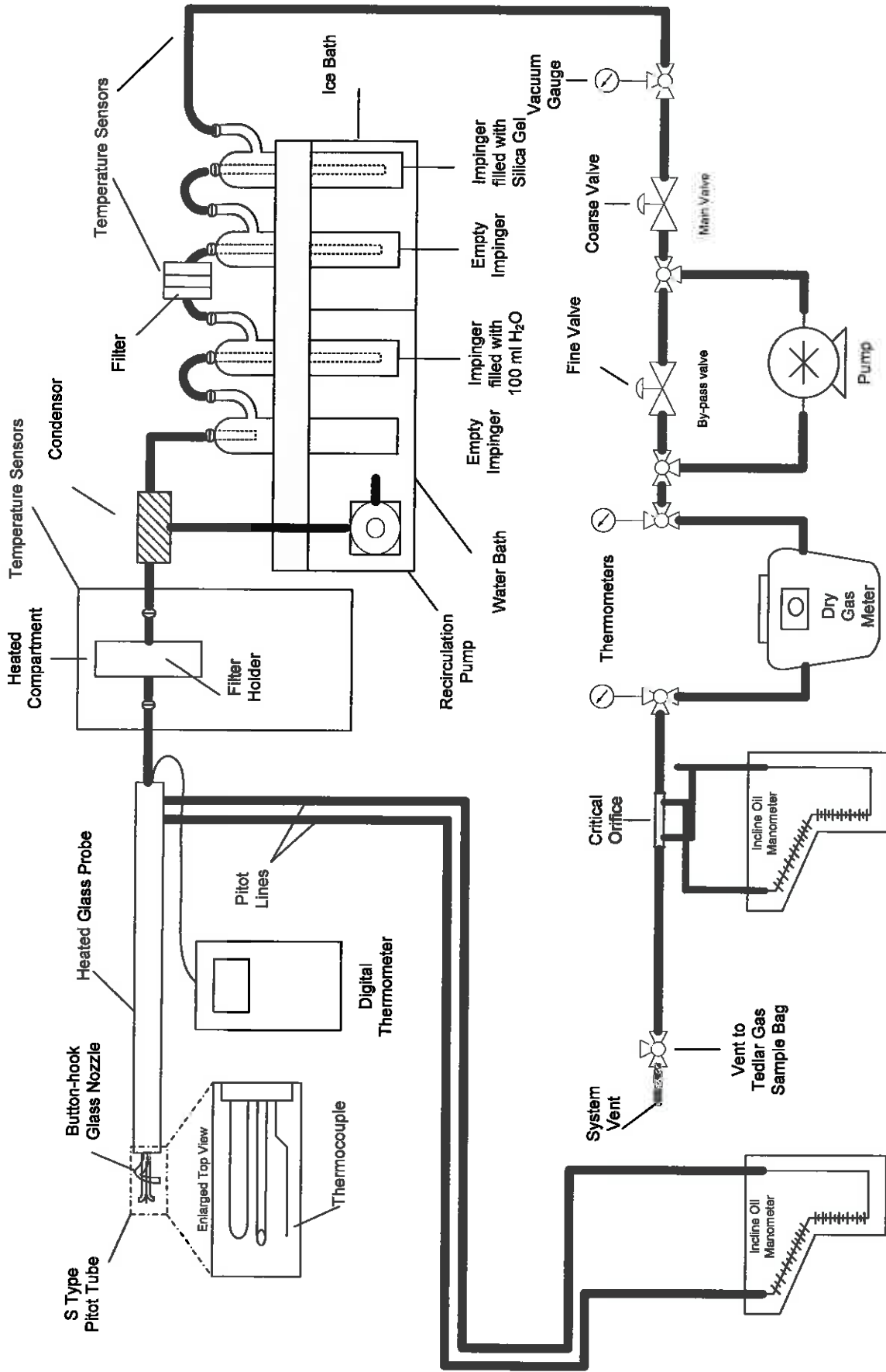
Diameter (in.)	192
Port Length (in.)	14.5
Distance A (Duct Diameters)	8.8
Distance B (Duct Diameters)	8.2

<u>Point</u>	<u>Distance From Wall (in.)</u>
1	56.8
2	28.0
3	8.4

**Cross Section of the Henderson Unit 1 Stack Test Location  
Big Rivers Electric Corporation**

Figure 2

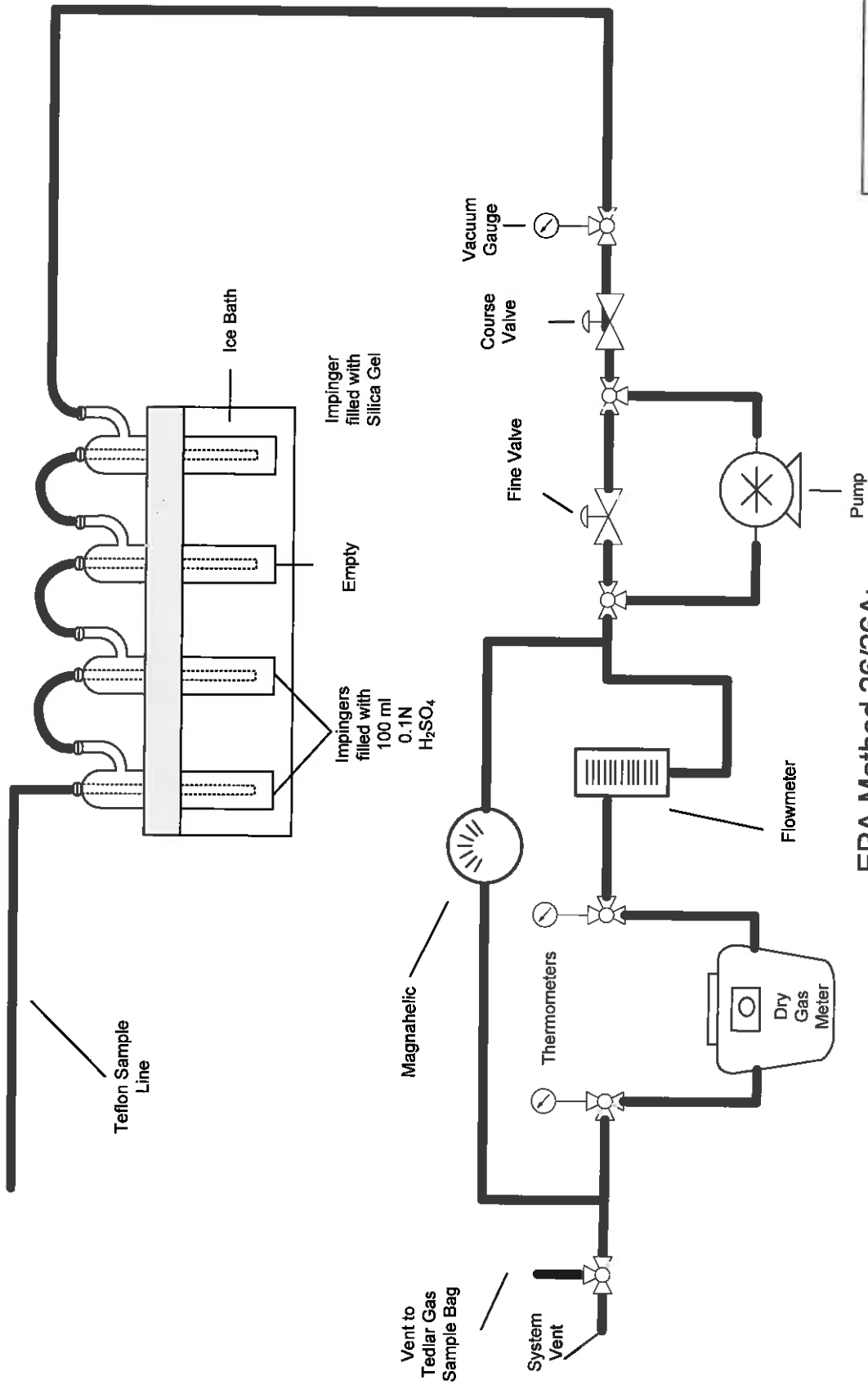




EPA Methods 2, 3, 4, 5B and 202:  
Total Particulate Sampling Train

Figure 3

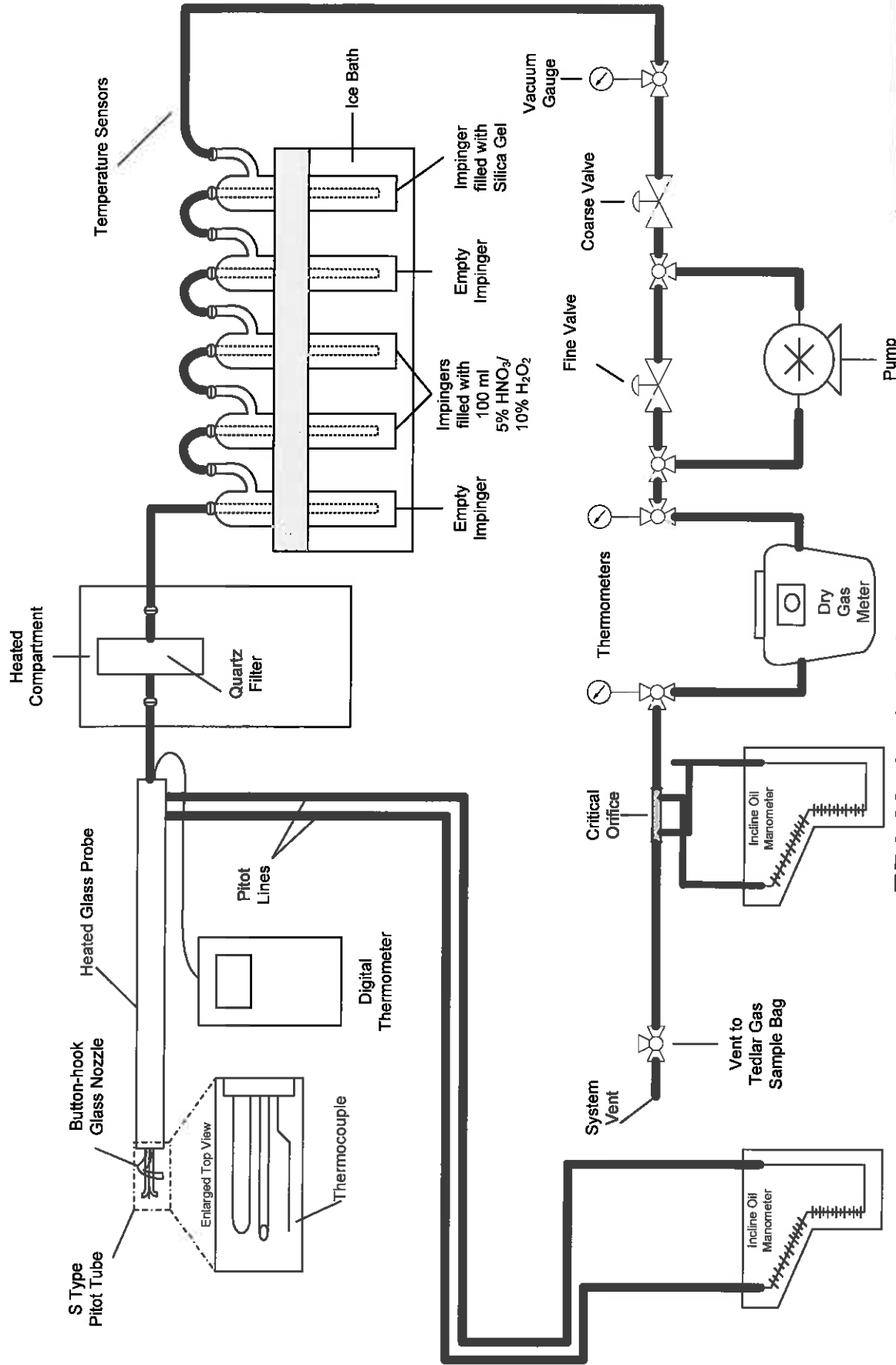




EPA Method 26/26A:  
Hydrogen Chloride and Hydrogen Fluoride Sampling Train

Figure 4





EPA Methods 2, 3, 4 and 29:  
Multi-Metals Sampling Train

Figure 5



**EPA Method 30B:  
Total Vapor Phase Mercury Sampling Train**

**Figure 6**

