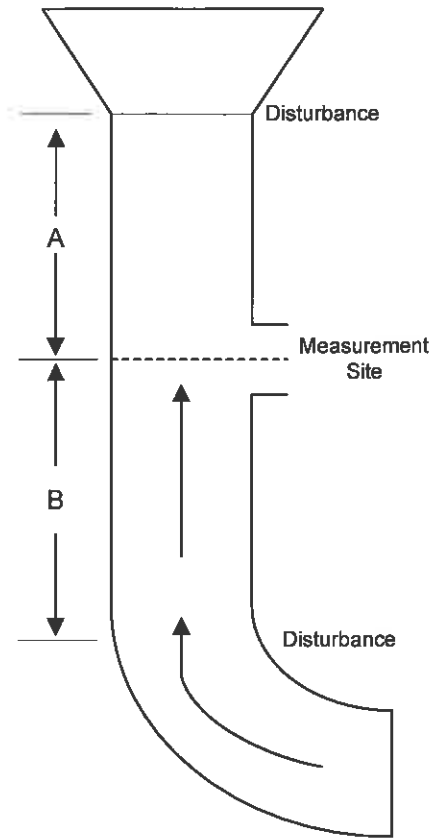
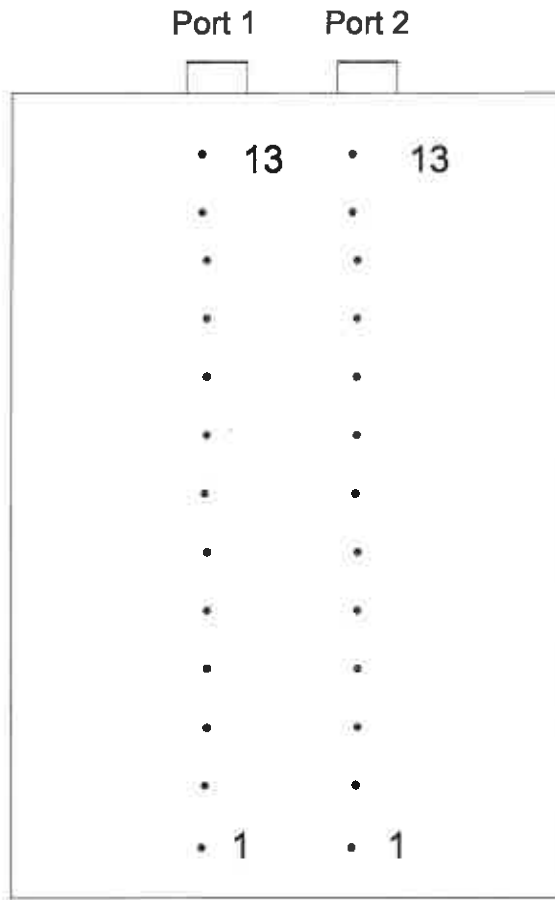


## **Appendix**

### ***Figures***

Up



Dimensions (in.)                      162.0 X 198.0  
 Port Length (in.)                      36.0

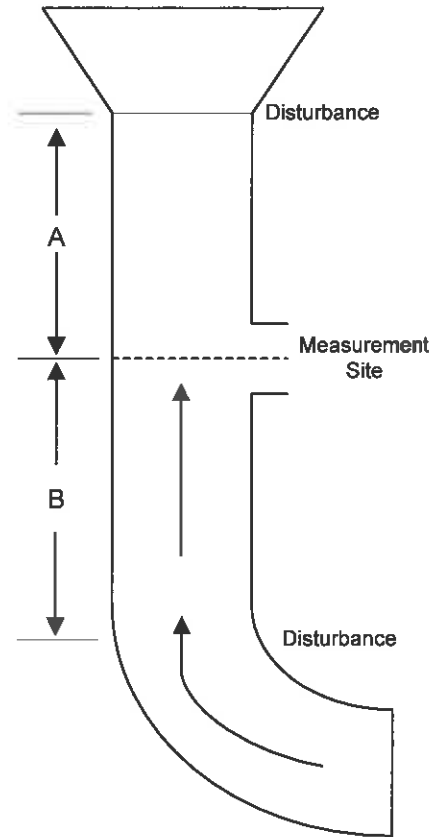
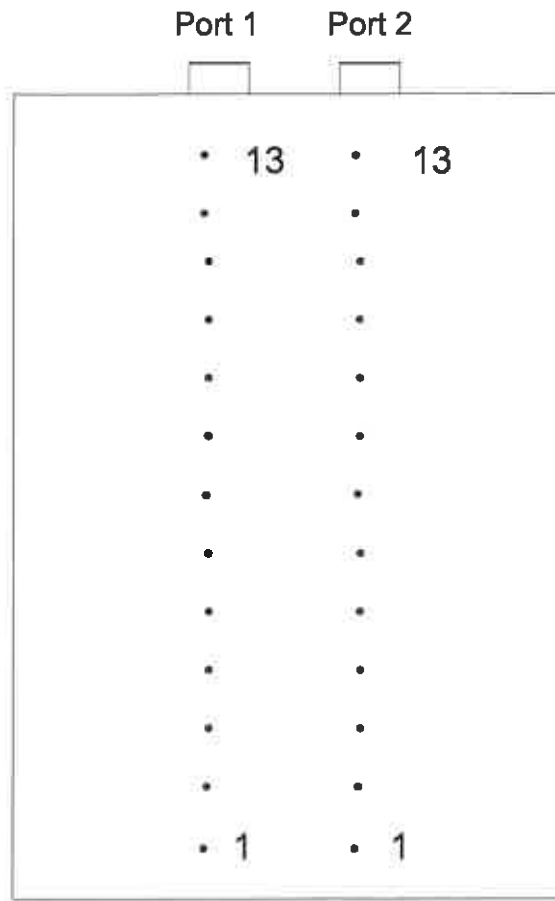
Point	Distance From Wall (in.)
1	6.2
2	18.7
3	31.2
4	43.6
5	56.1
6	68.5
7	81.0
8	93.5
9	105.9
10	118.4
11	130.9
12	143.3
13	155.8

Cross Section of the Green Inlet A Test Location  
 Big Rivers Electric Corporation

Figure 1



Up ↑



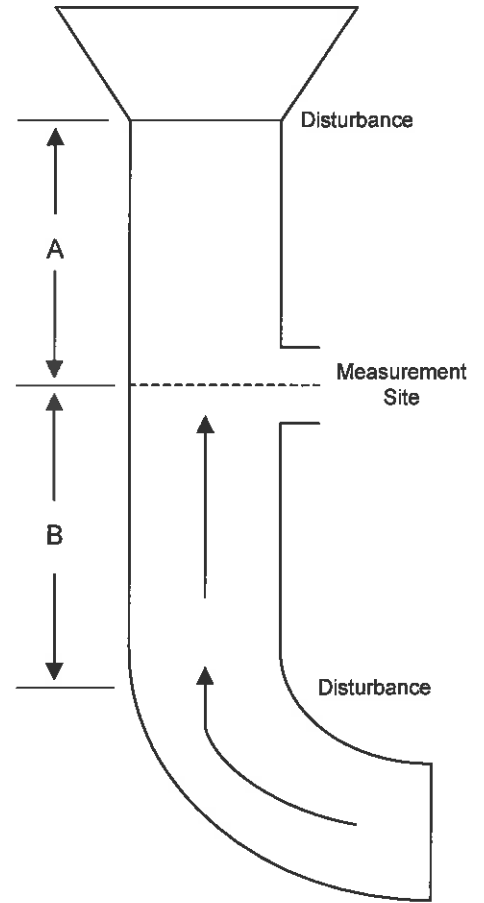
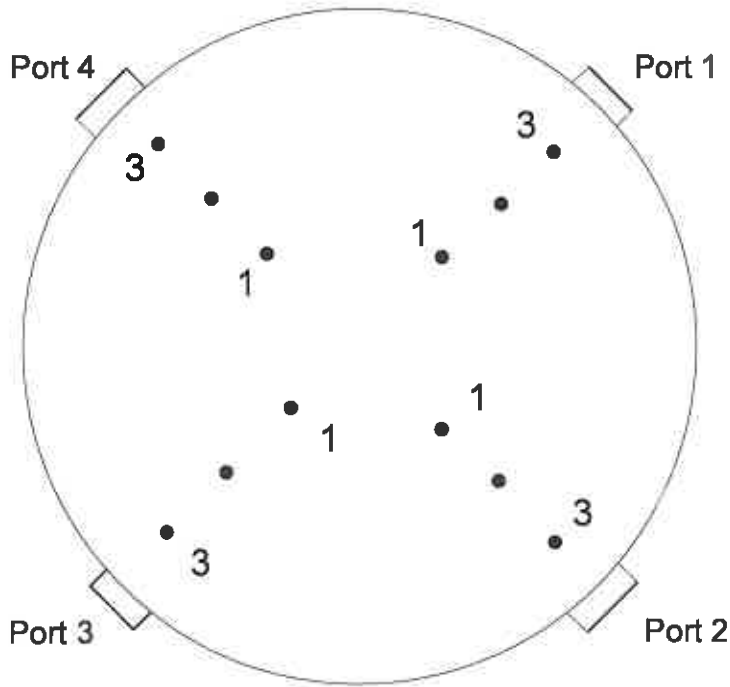
Dimensions (in.)                      162.0 X 198.0  
 Port Length (in.)                      36.0

Point	Distance From Wall (in.)
1	6.2
2	18.7
3	31.2
4	43.6
5	56.1
6	68.5
7	81.0
8	93.5
9	105.9
10	118.4
11	130.9
12	143.3
13	155.8

Cross Section of the Green Inlet B Test Location  
 Big Rivers Electric Corporation

Figure 2





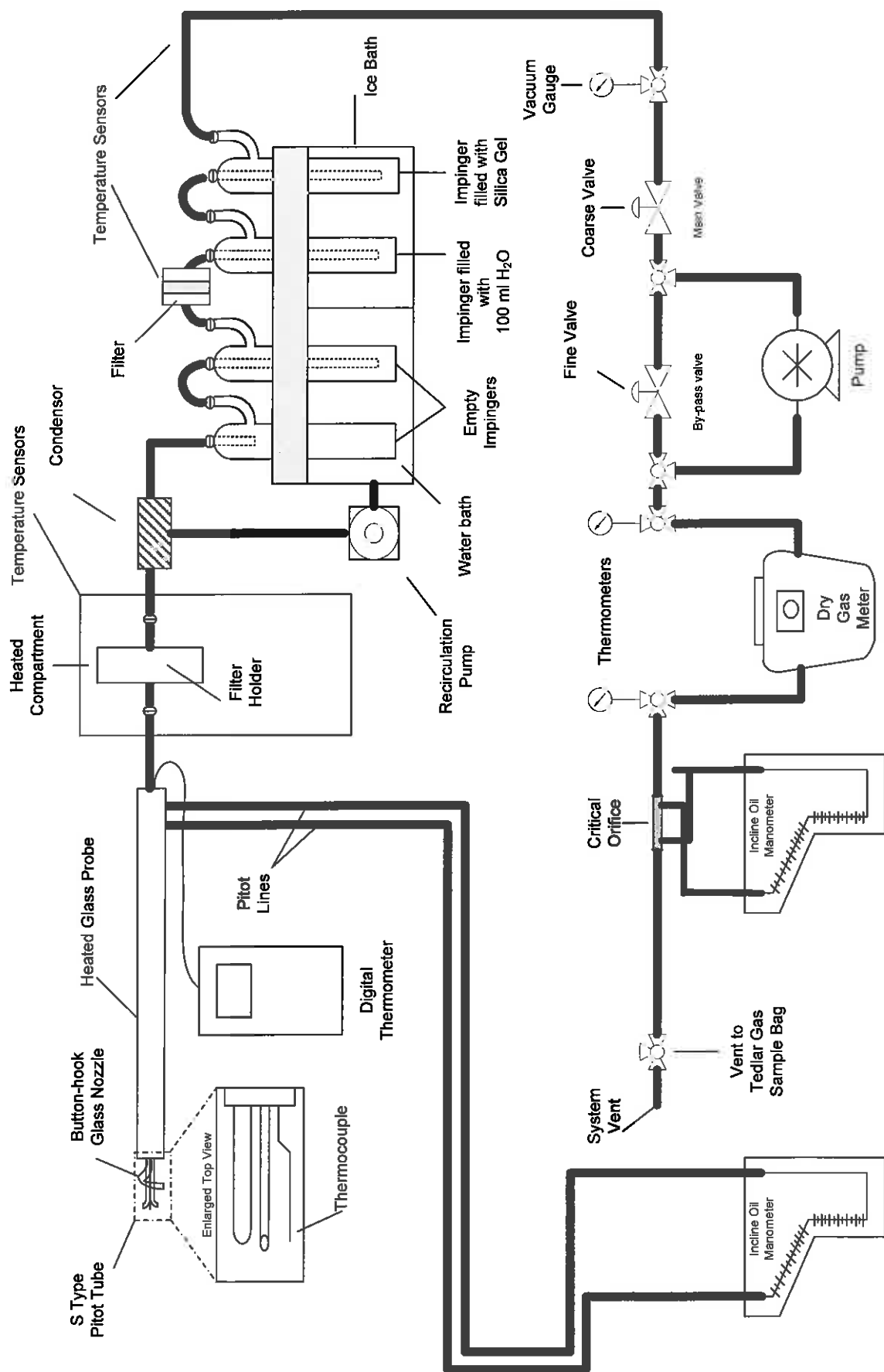
Diameter (in.)	180
Port Length (in.)	12.0
Distance A (Duct Diameters)	6.7
Distance B (Duct Diameters)	16.7

<u>Point</u>	<u>Distance From Wall (in.)</u>
1	53.3
2	26.4
3	7.8

Cross Section of the Green Station Unit 1 Test Location  
Big Rivers Electric Corporation

Figure 3

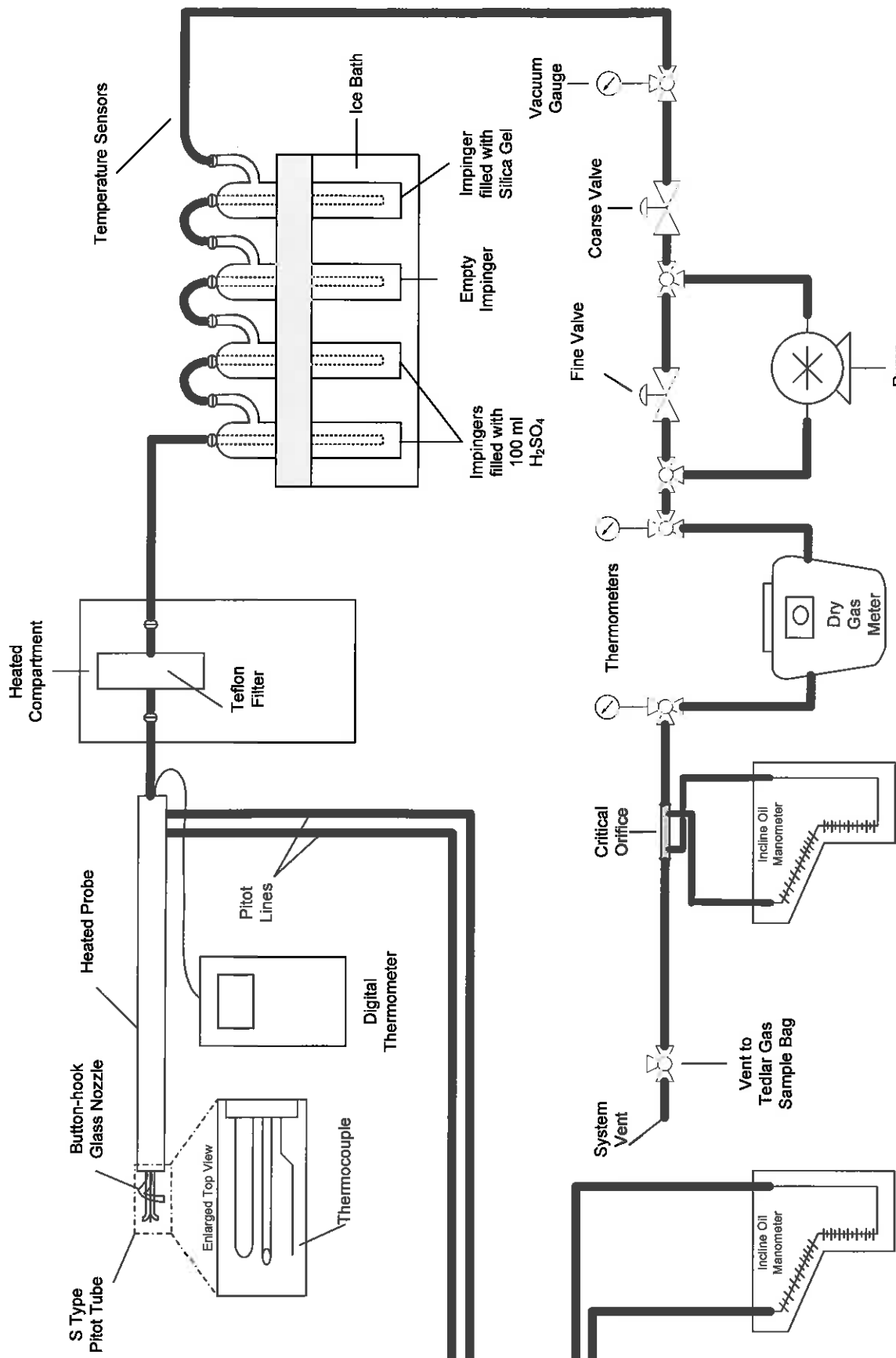




EPA Methods 2, 3, 4, 5 and 202:  
Total Particulate Sampling Train

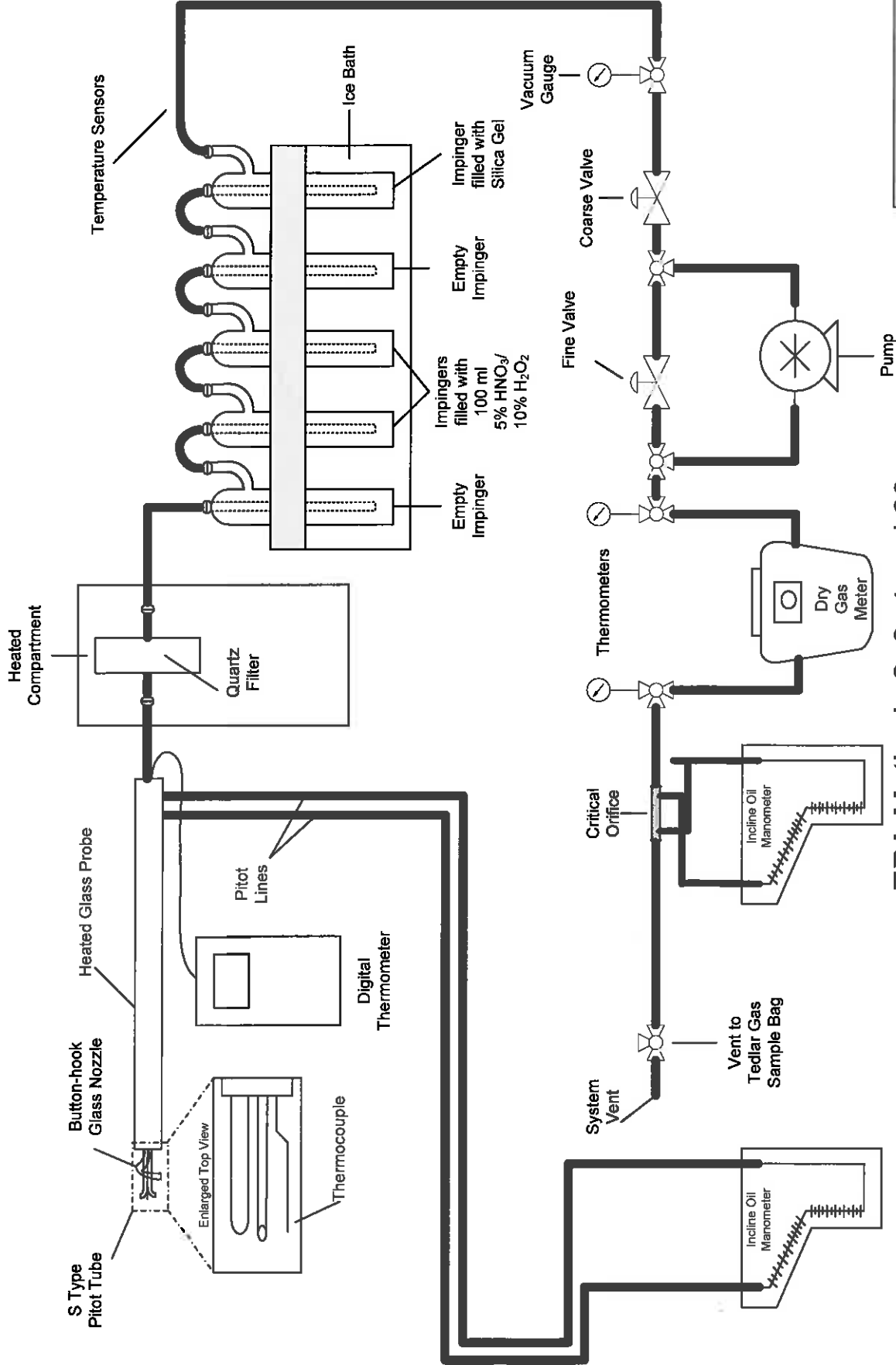
Figure 4





EPA Methods 2, 4 and 26A:  
 Hydrogen Chloride and Hydrogen Fluoride  
 Sampling Train  
 Figure 5

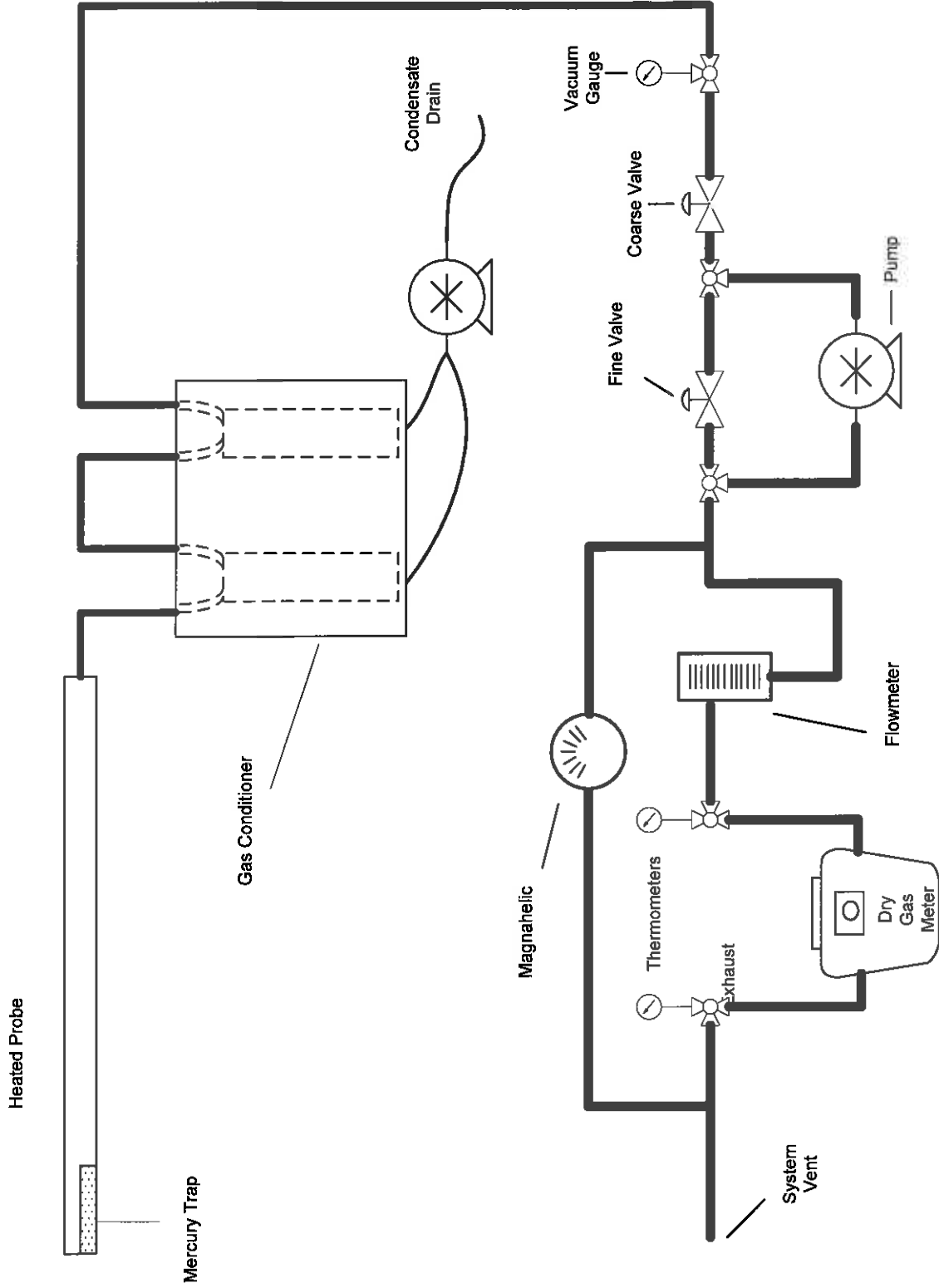




EPA Methods 2, 3, 4 and 29:  
Multi-Metals Sampling Train

Figure 6





**EPA Method 30B:  
Total Vapor Phase Mercury Sampling Train**

**Figure 7**