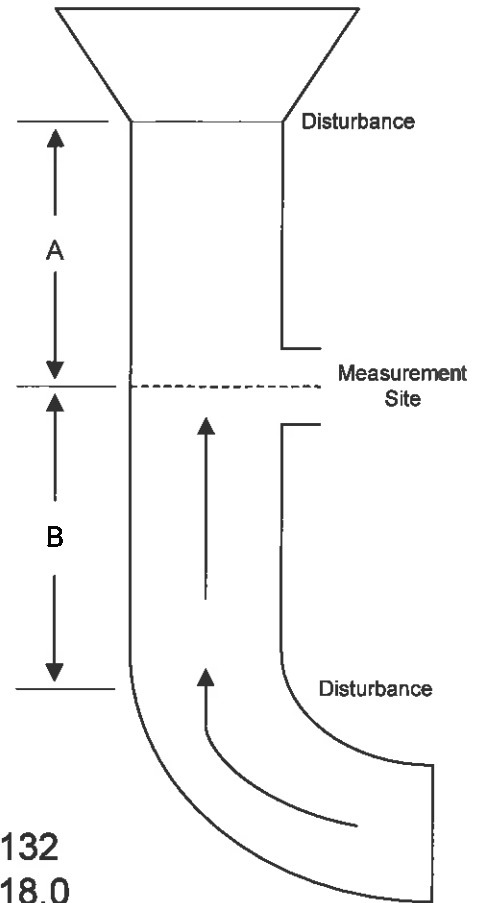
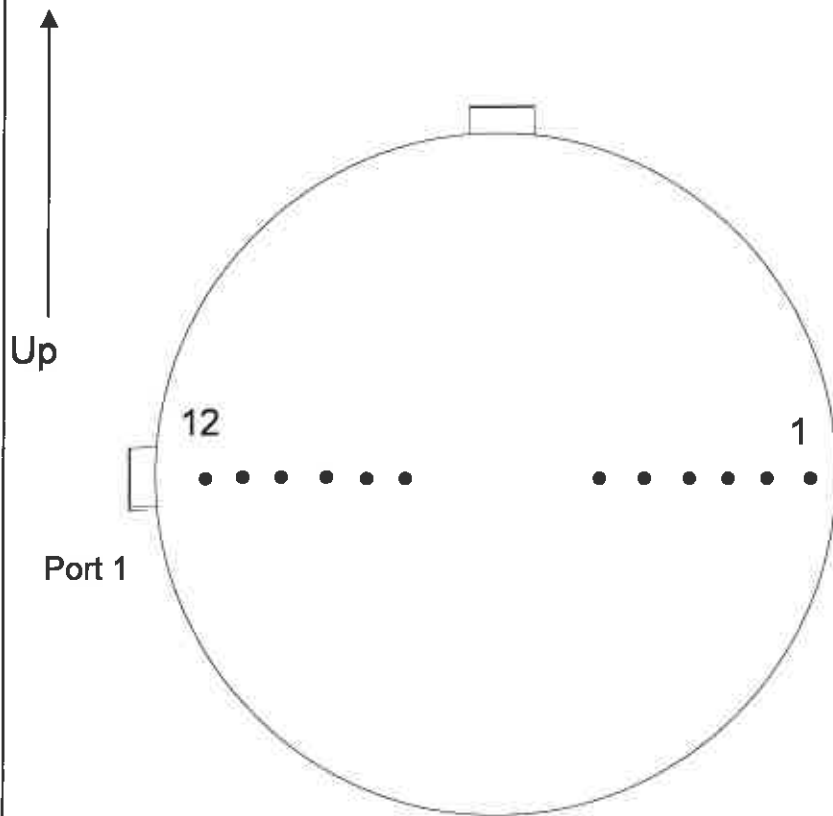


## **Appendix**

### ***Figures***



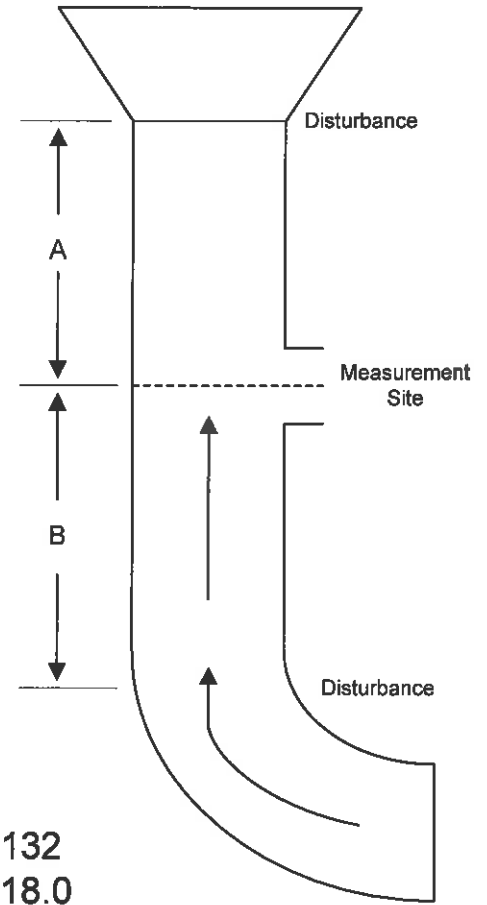
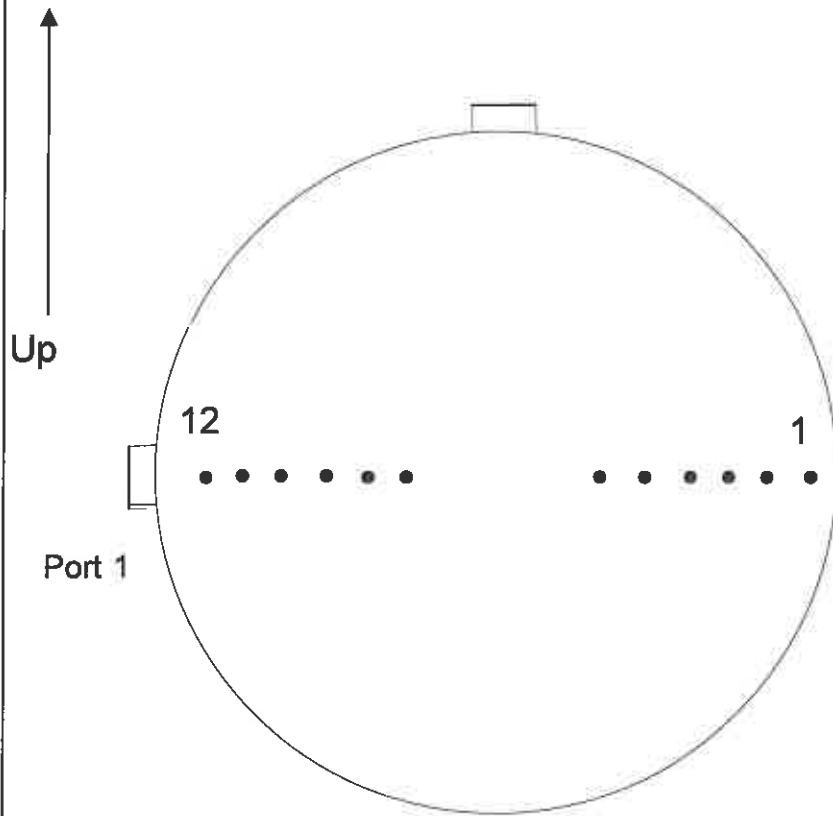
Diameter (in.) 132  
 Port Length (in.) 18.0

Point	Distance From Wall (in.)
1	2.8
2	8.8
3	15.6
4	23.4
5	33.0
6	47.0
7	85.0
8	99.0
9	108.6
10	116.4
11	123.2
12	129.2

Cross Section of the Coleman ESP 1 Test  
 Big Rivers Electric Corporation

Figure 1





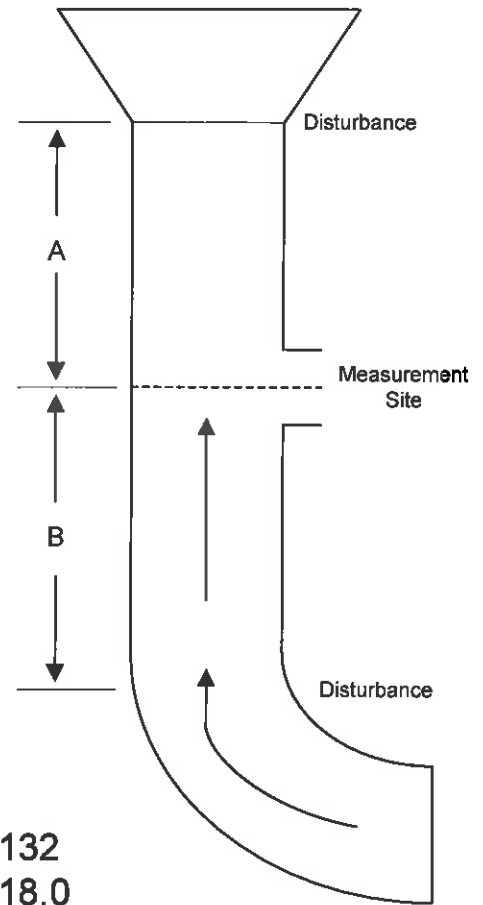
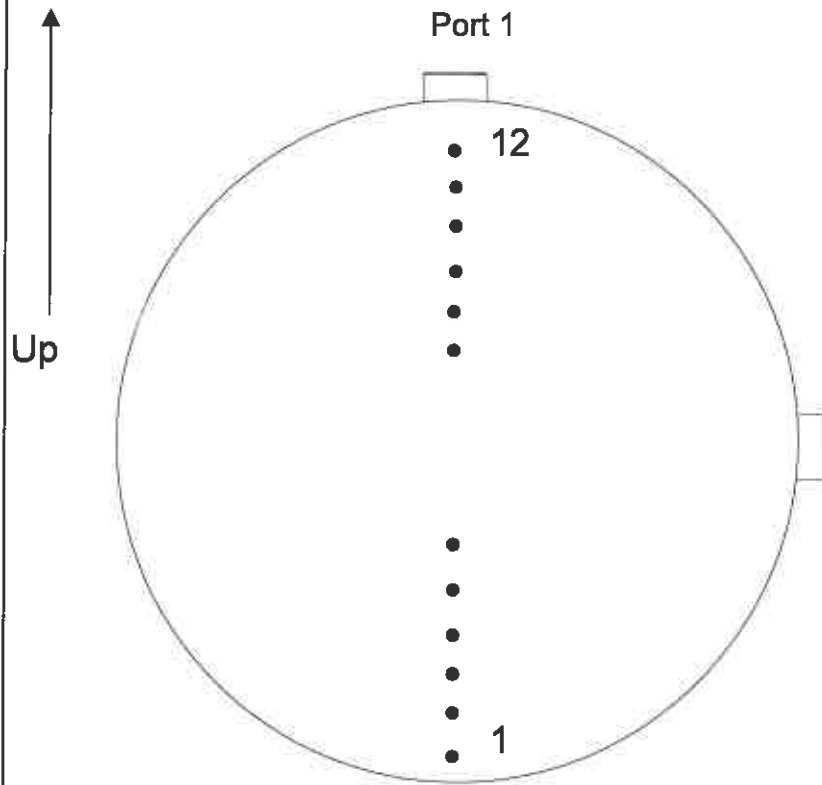
Diameter (in.) 132  
 Port Length (in.) 18.0

Point	Distance From Wall (in.)
1	2.8
2	8.8
3	15.6
4	23.4
5	33.0
6	47.0
7	85.0
8	99.0
9	108.6
10	116.4
11	123.2
12	129.2

Cross Section of the Coleman ESP 2 Test  
 Big Rivers Electric Corporation

Figure 2





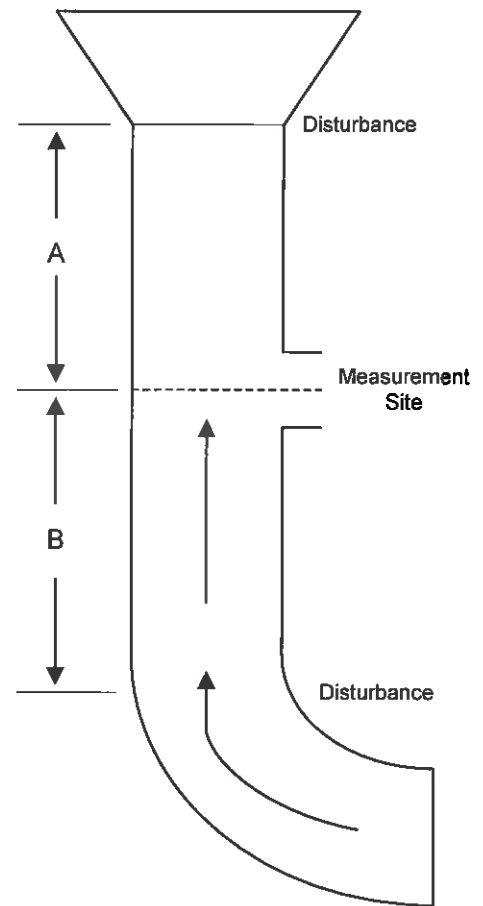
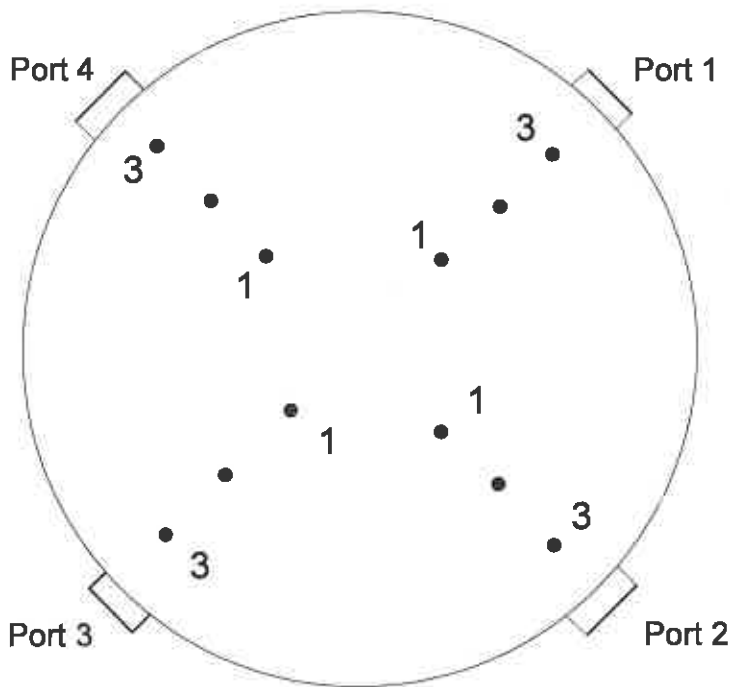
Diameter (in.) 132  
 Port Length (in.) 18.0

Point	Distance From Wall (in.)
1	2.8
2	8.8
3	15.6
4	23.4
5	33.0
6	47.0
7	85.0
8	99.0
9	108.6
10	116.4
11	123.2
12	129.2

Cross Section of the Coleman ESP 3 Test  
 Big Rivers Electric Corporation

Figure 3





Diameter (in.)	358
Port Length (in.)	14.0
Distance A (Duct Diameters)	2.1
Distance B (Duct Diameters)	8.4

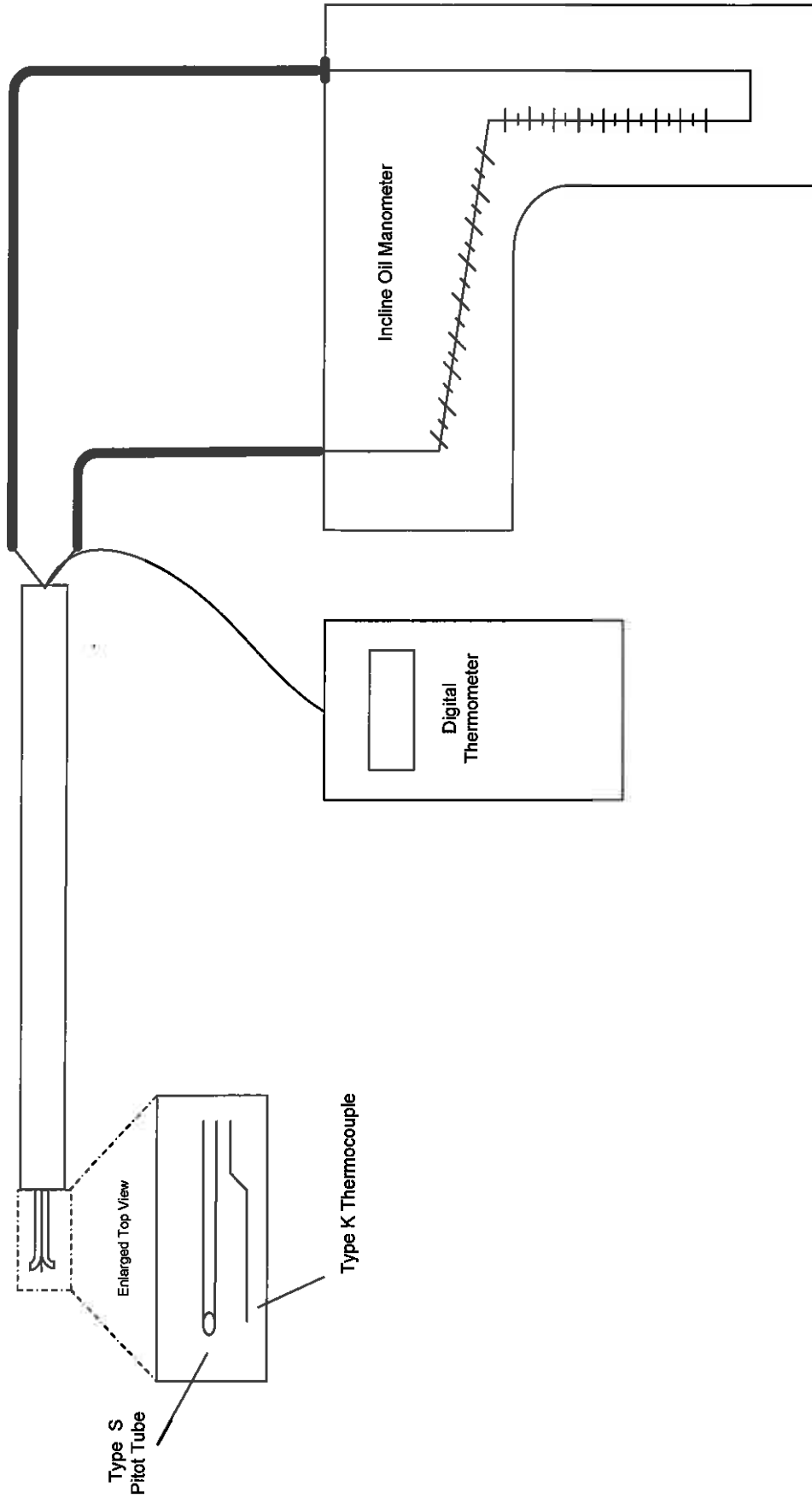
<u>Point</u>	<u>Distance From Wall (in.)</u>
1	105.9
2	52.4
3	15.6

Cross Section of the Coleman Station Stack Test Location  
Big Rivers Electric Corporation

Figure 4

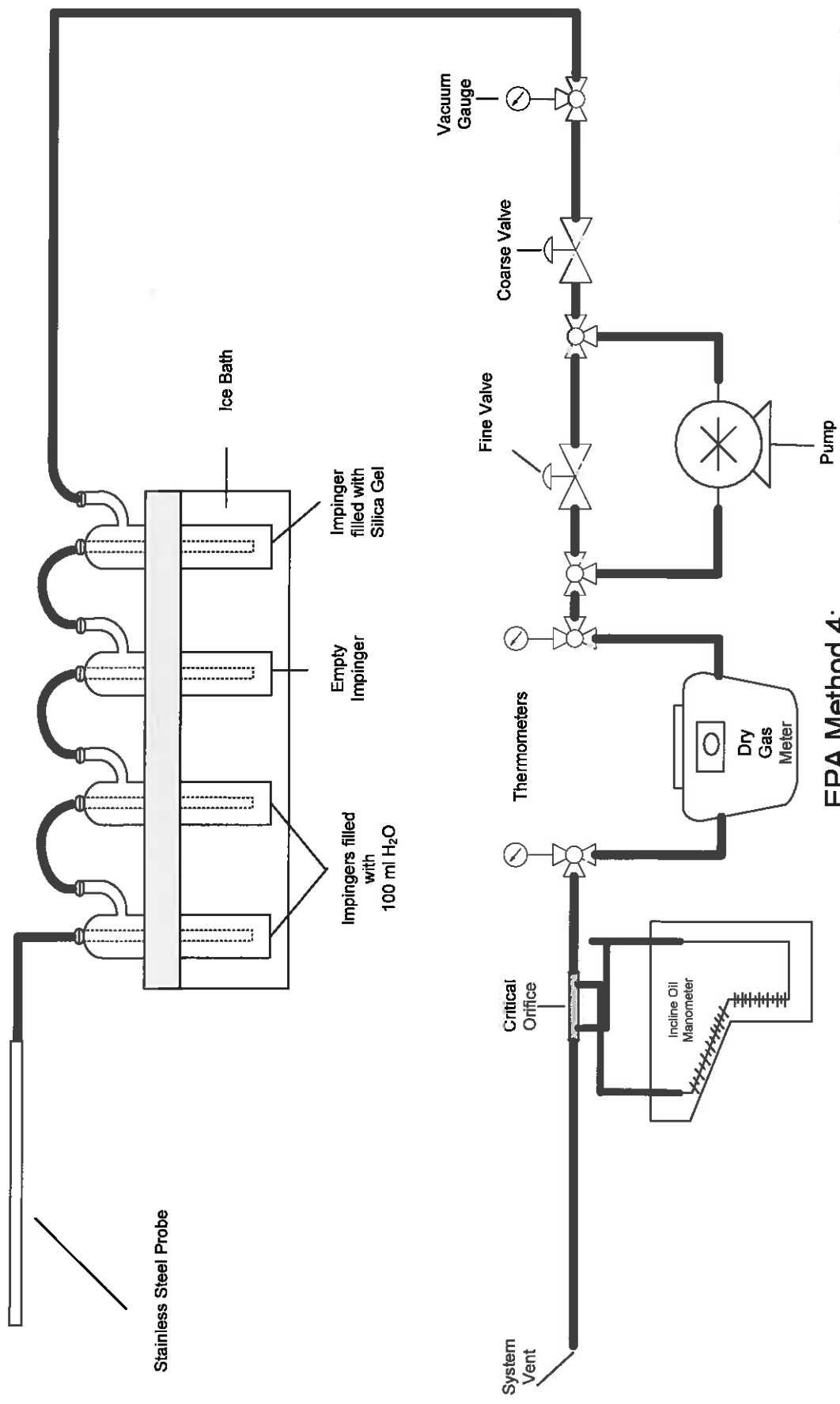


**AIRTECH**  
Environmental  
Services Inc.



EPA Method 2:  
Type S Pitot Tube Assembly with Manometer

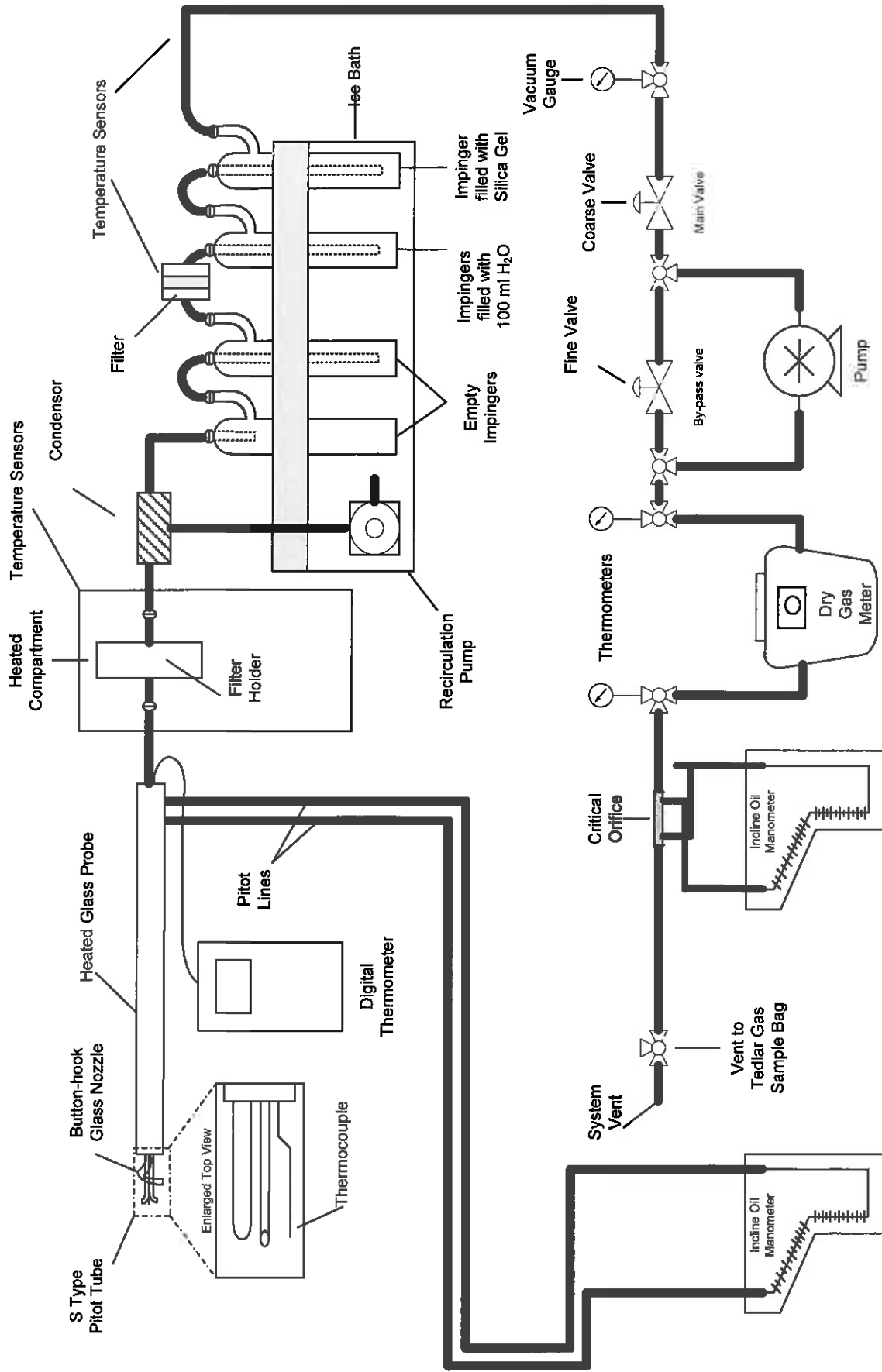
Figure 5



EPA Method 4:  
Moisture Sampling Train

Figure 6

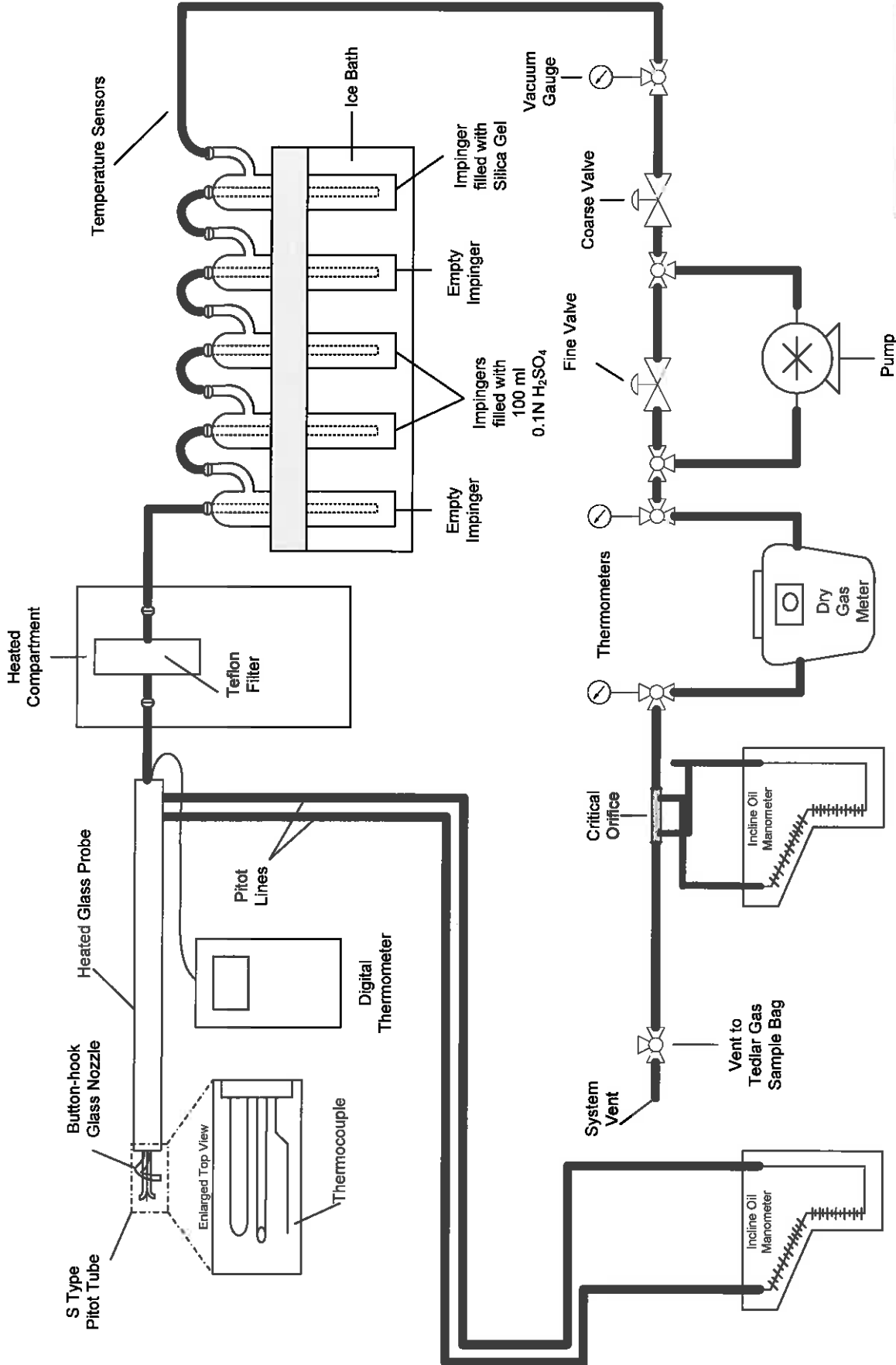




EPA Methods 2, 3, 4, 5B and 202:  
Total Particulate Sampling Train

Figure 7

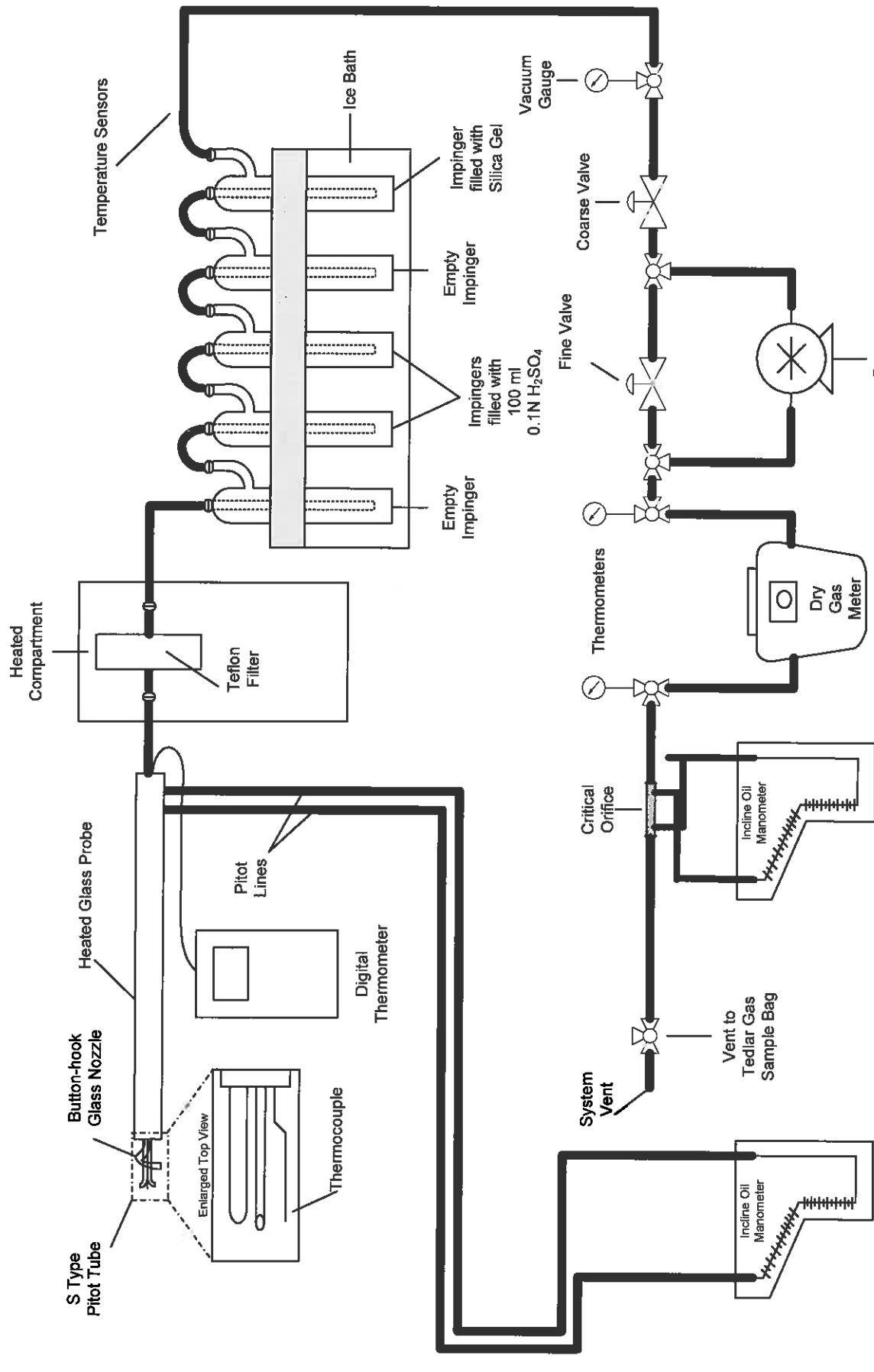




EPA Methods 2, 4 and 26:  
 Hydrogen Chloride and Hydrogen Fluoride Sampling Train

Figure 8

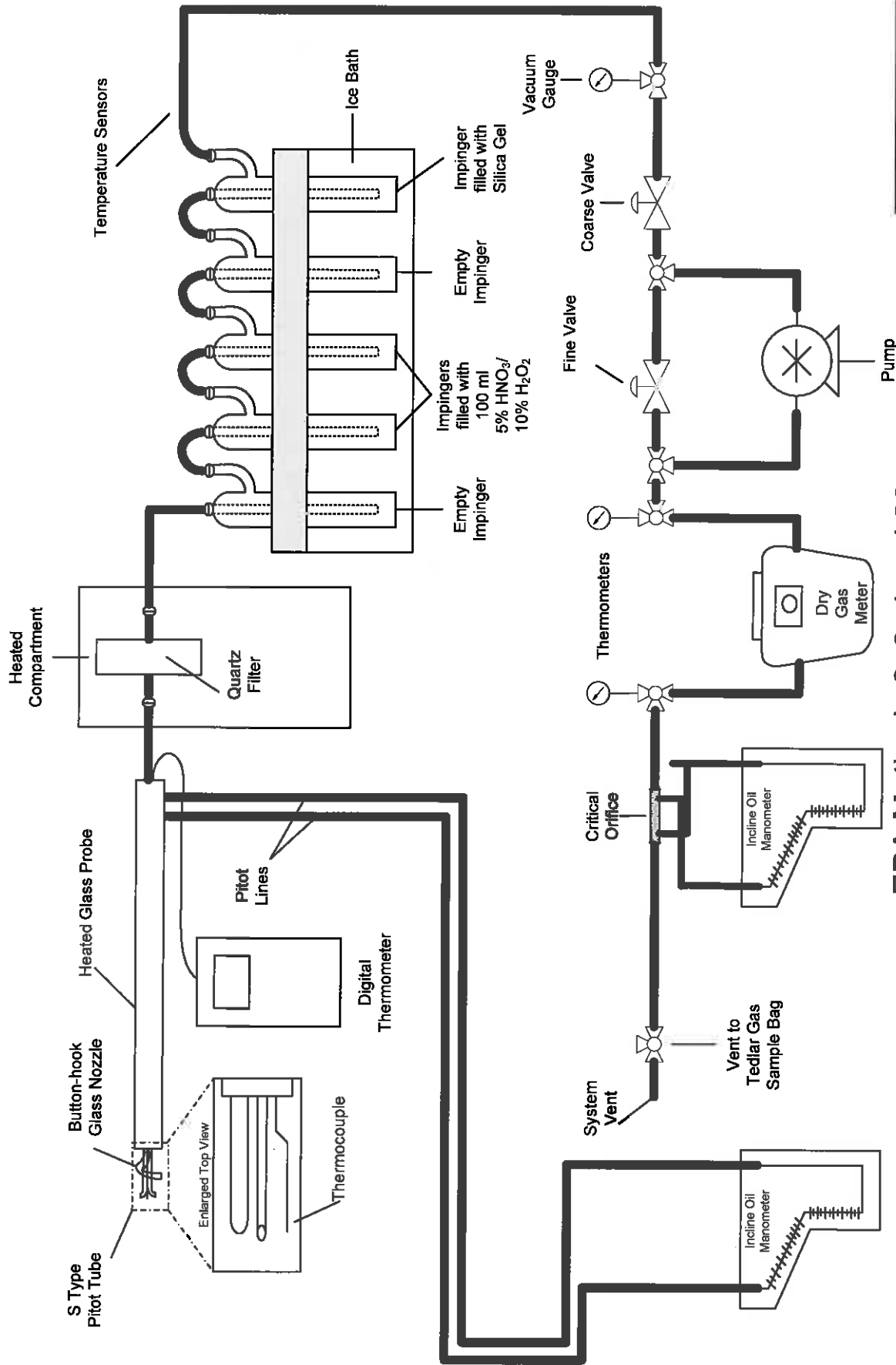




EPA Methods 2, 4 and 26A:  
Hydrogen Chloride and Hydrogen Fluoride Sampling Train

Figure 9





EPA Methods 2, 3, 4 and 29:  
Metallic HAPs Sampling Train

Figure 10



Heated Probe

Mercury Trap

Gas Conditioner

Condensate Drain

Magnahelic

Thermometers

Exhaust

System Vent

Flowmeter

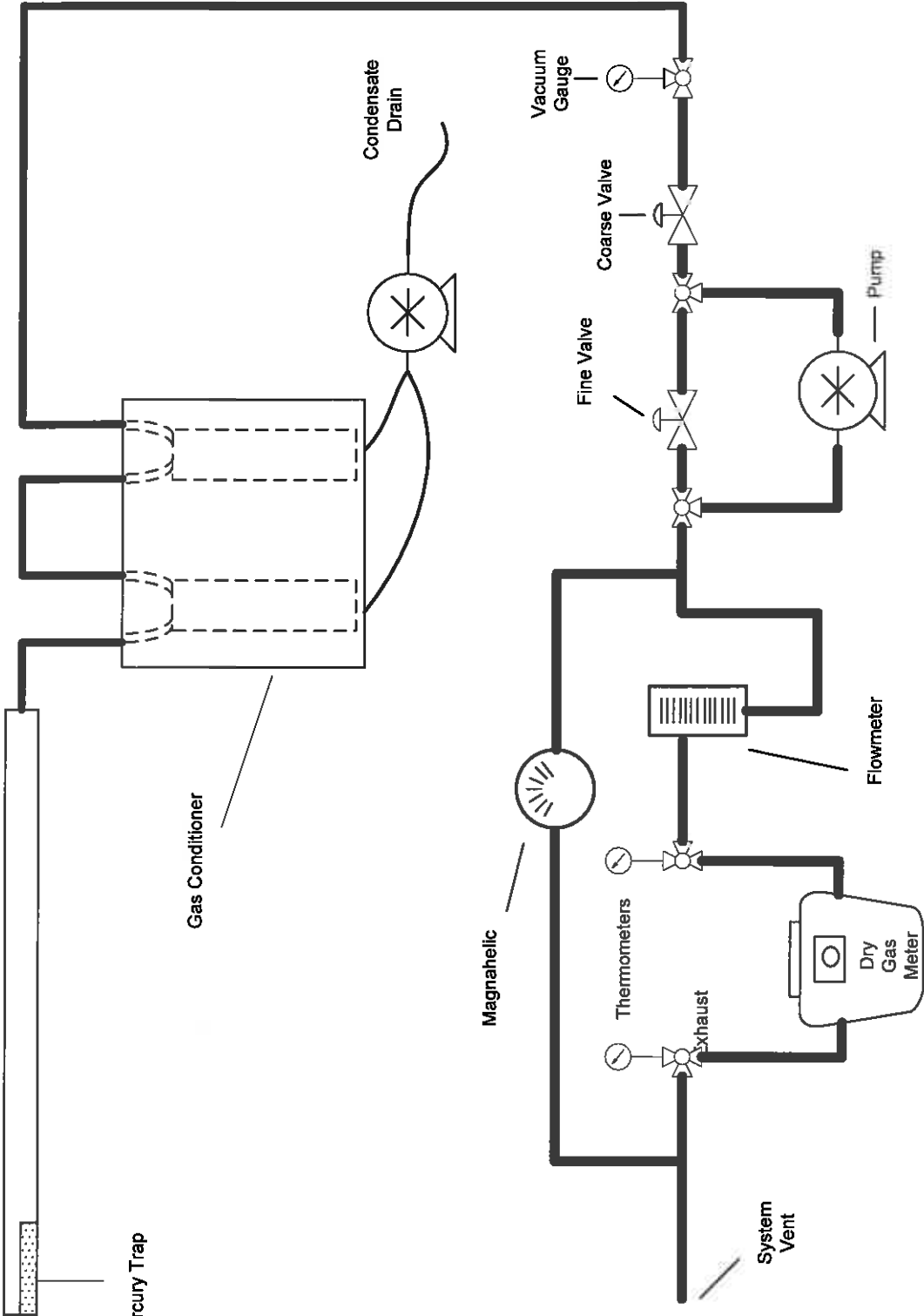
Dry Gas Meter

Vacuum Gauge

Fine Valve

Coarse Valve

Pump



EPA Method 30B:  
Total Vapor Phase Mercury Sampling Train

Figure 11

