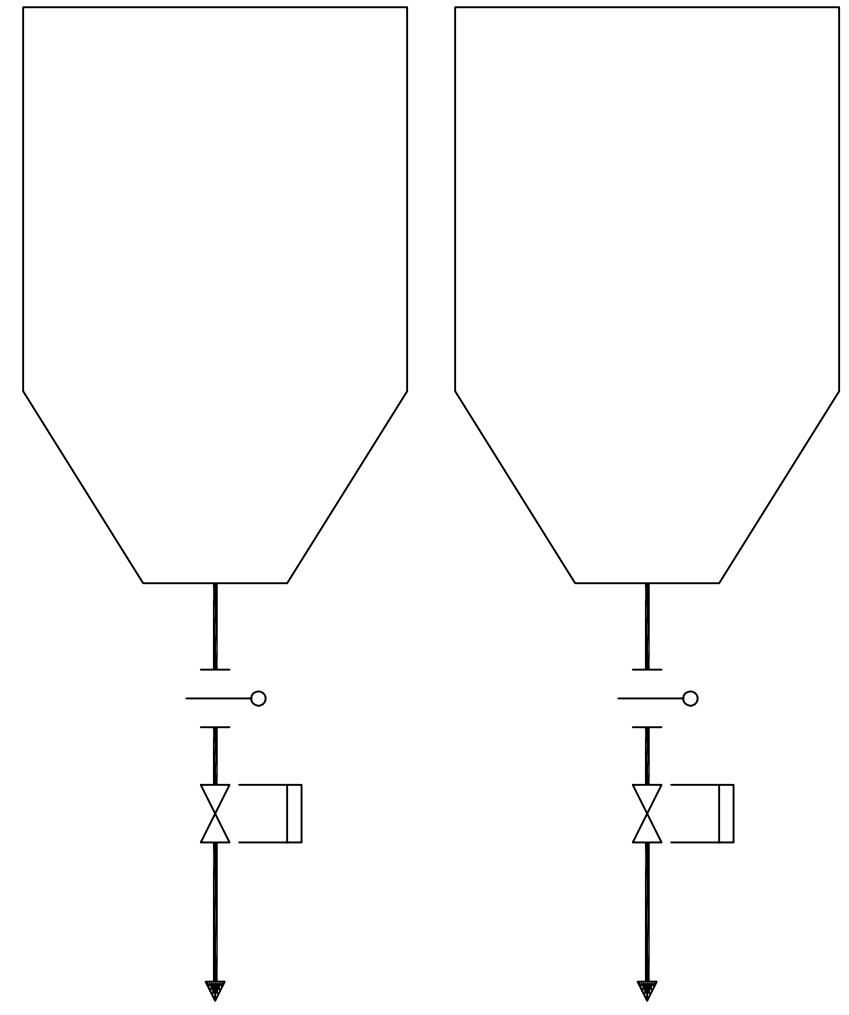


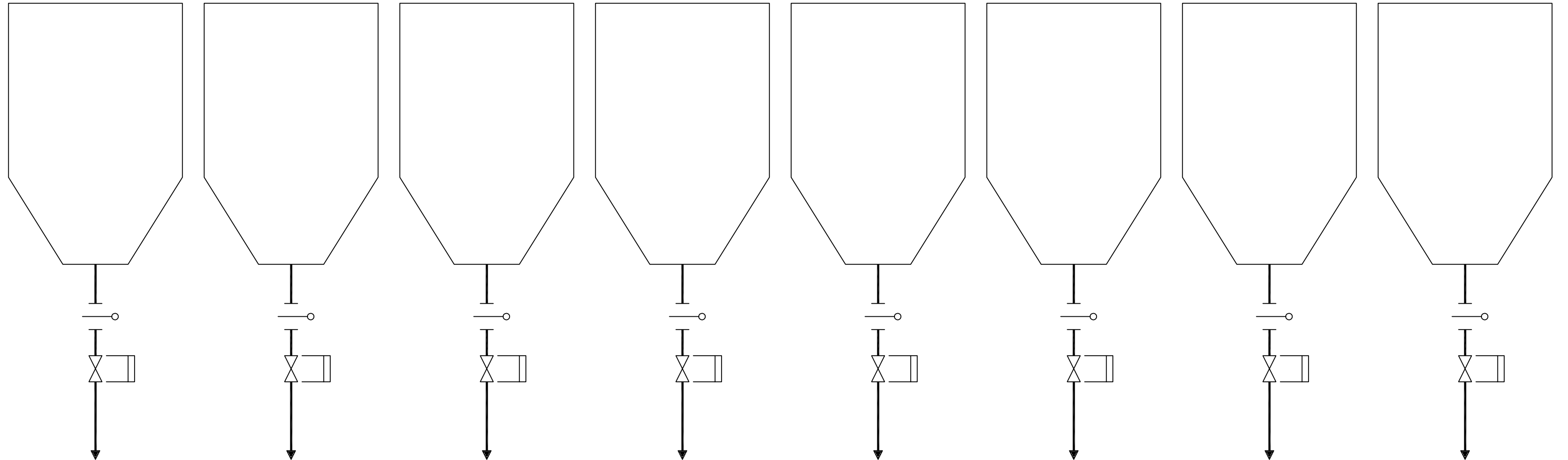
- NOTES:
1. NUMBER OF HOPPERS TO BE CONFIRMED DURING DETAILED DESIGN.
  2. SIZE AND QUANTITY OF ADDITIONAL EQUIPMENT REQUIRED TO BE DETERMINED DURING DETAILED DESIGN.

SCR DUCT  
ASH HOPPERS



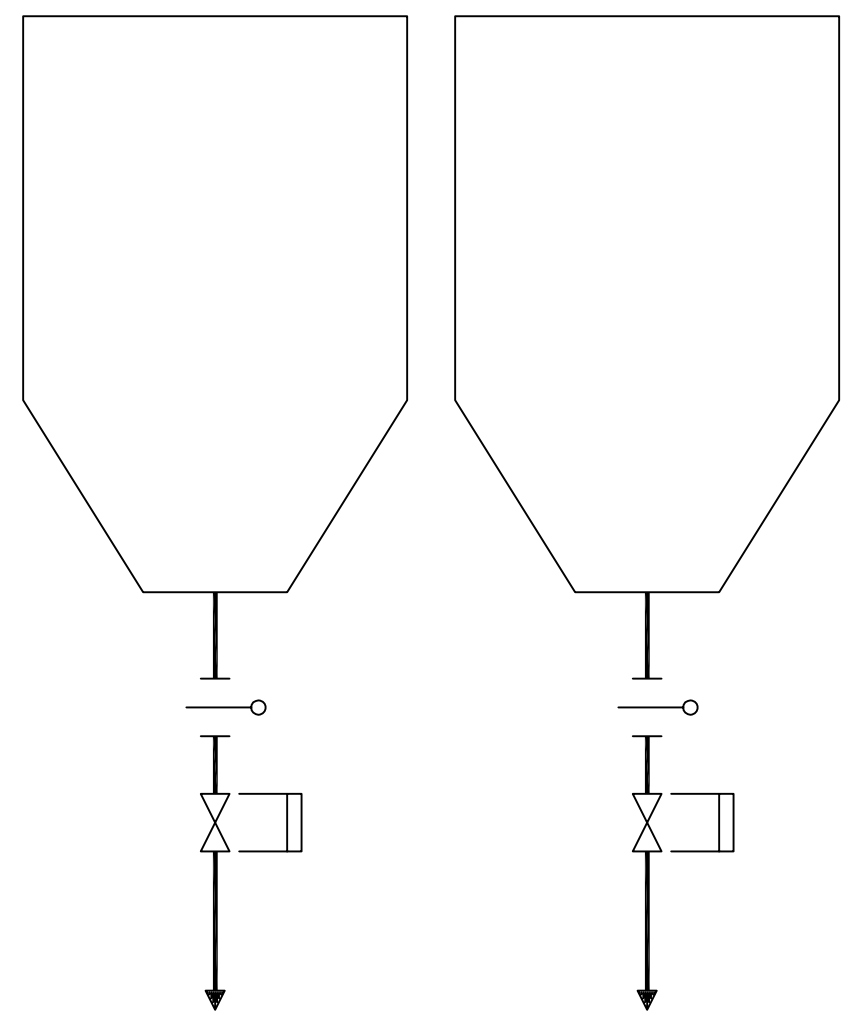
TO EXISTING  
ASH SYSTEM  
(NOTE 1)

PULSE JET  
FABRIC FILTER  
ASH HOPPERS



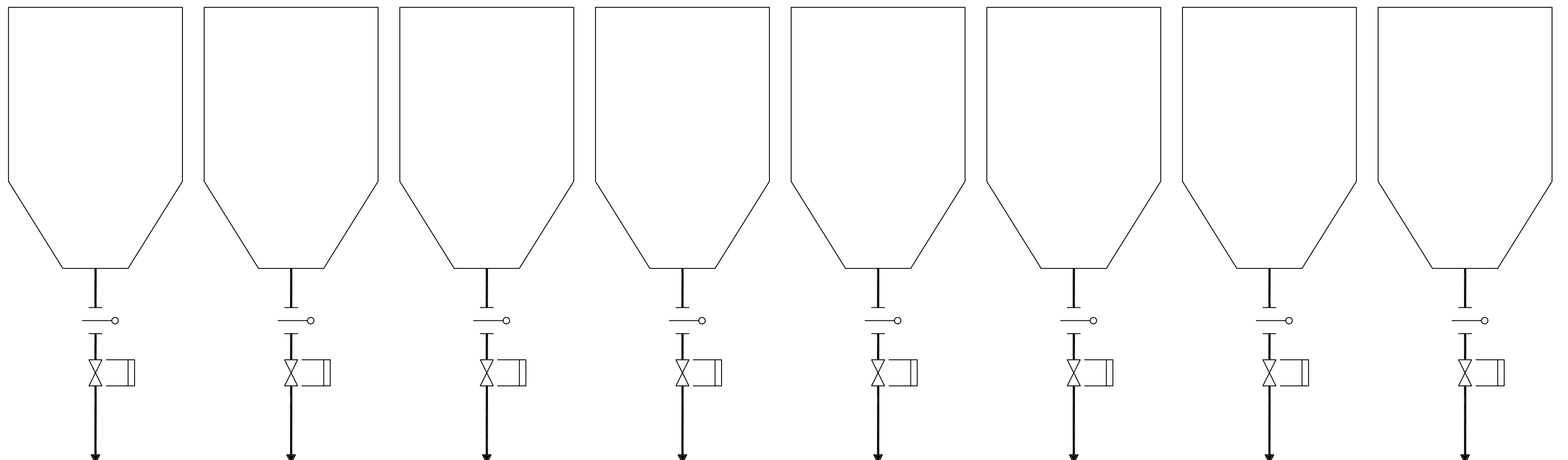
TO EXISTING  
ASH SYSTEM  
(NOTE 1)

SCR DUCT  
ASH HOPPERS



TO EXISTING  
ASH SYSTEM  
(NOTE 1)

PULSE JET  
FABRIC FILTER  
ASH HOPPERS



TO EXISTING  
ASH SYSTEM  
(NOTE 1)

**NOT TO BE USED  
FOR CONSTRUCTION**  
THE DISTRIBUTION AND USE OF THE NATIVE  
FORMAT CAD FILE OF THIS DRAWING IS  
UNCONTROLLED. THE USER SHALL VERIFY  
TRACEABILITY OF THIS DRAWING TO THE LATEST  
CONTROLLED VERSION.

PR03292 ACAD 16.1s (LWS Tech)  
 02/21/11 14:41:10  
 D1  
 I=1

NO	DATE	REVISIONS AND RECORD OF ISSUE	DRN	DES	CHK	PDE	APP
B	21/FEB/11	ISSUED FOR CLIENT REVIEW	PRP	SAT	MRW		
A	04/FEB/11	ISSUED FOR IN HOUSE REVIEW	HWB	NCM	MRW		

**BLACK & VEATCH**  
CORPORATION

CHECKED: \_\_\_\_\_ DATE: \_\_\_\_\_

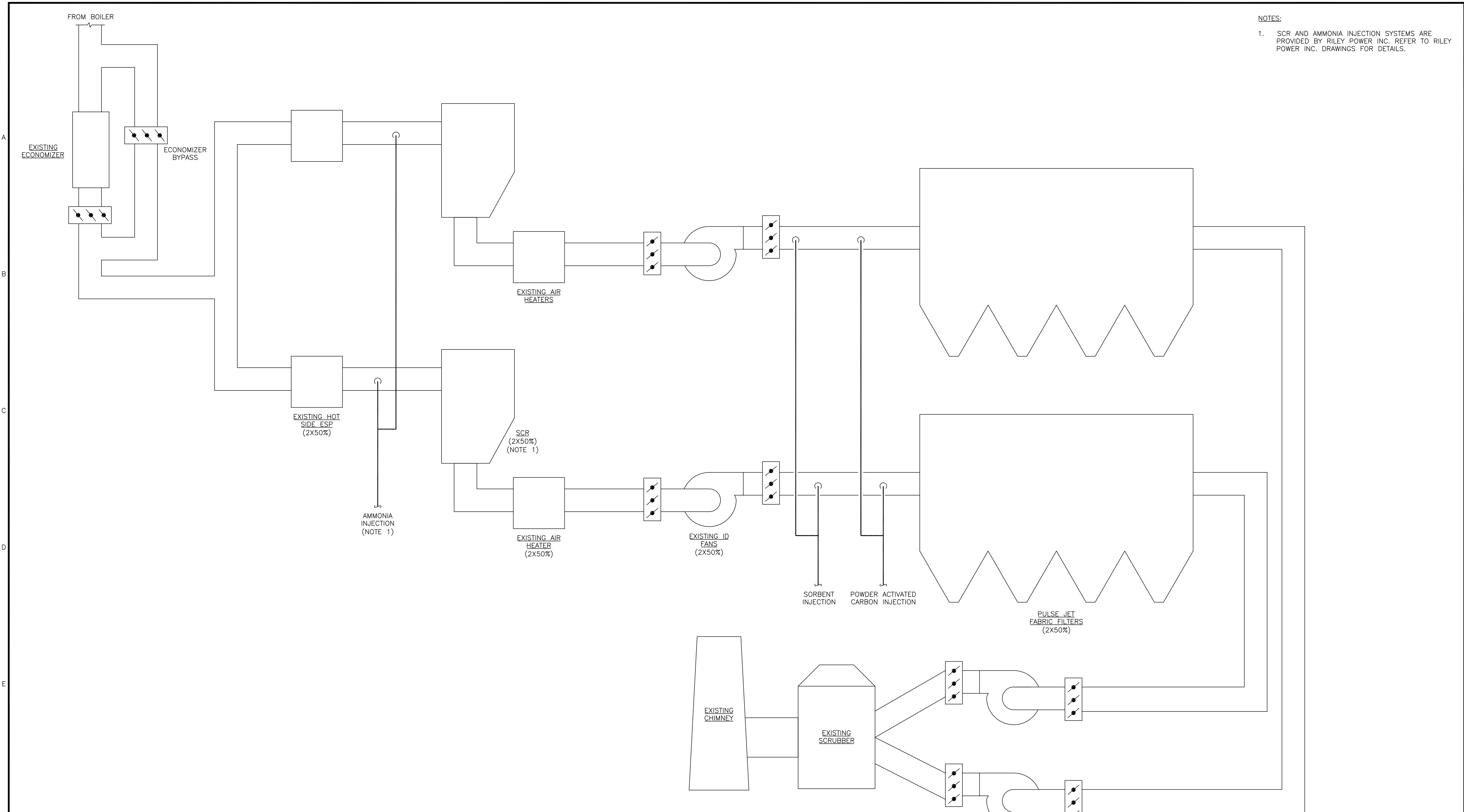
DRAWN: HWB

**LG&E/KU – GHENT STATION**  
**PHASE 1I: AIR QUALITY CONTROL STUDY**

UNIT 2 PROCESS FLOW DIAGRAM  
 FLY ASH HANDLING

PROJECT	DRAWING NUMBER	REV
168908-G2ASB-M2022		B
CODE		
AREA		

NOTES:  
 1. SCR AND AMMONIA INJECTION SYSTEMS ARE PROVIDED BY RILEY POWER INC. REFER TO RILEY POWER INC. DRAWINGS FOR DETAILS.



**NOT TO BE USED FOR CONSTRUCTION**  
 THE DISTRIBUTION AND USE OF THE NATIVE FORMAT CAD FILE OF THIS DRAWING IS UNCONTROLLED. THE USER SHALL VERIFY TRACEABILITY OF THIS DRAWING TO THE LATEST CONTROLLED VERSION.

PR03292  
 02/25/11 08:11:32  
 ACAD 16.1s (LWS Tech)  
 D1

NO	DATE	REVISIONS AND RECORD OF ISSUE	DRN	DES	CHK	PDE	APP
B	21/FEB/11	ISSUED FOR CLIENT REVIEW	PRP	SAT	MRW		
A	04/FEB/11	ISSUED FOR IN HOUSE REVIEW	HWB	NCM	MRW		

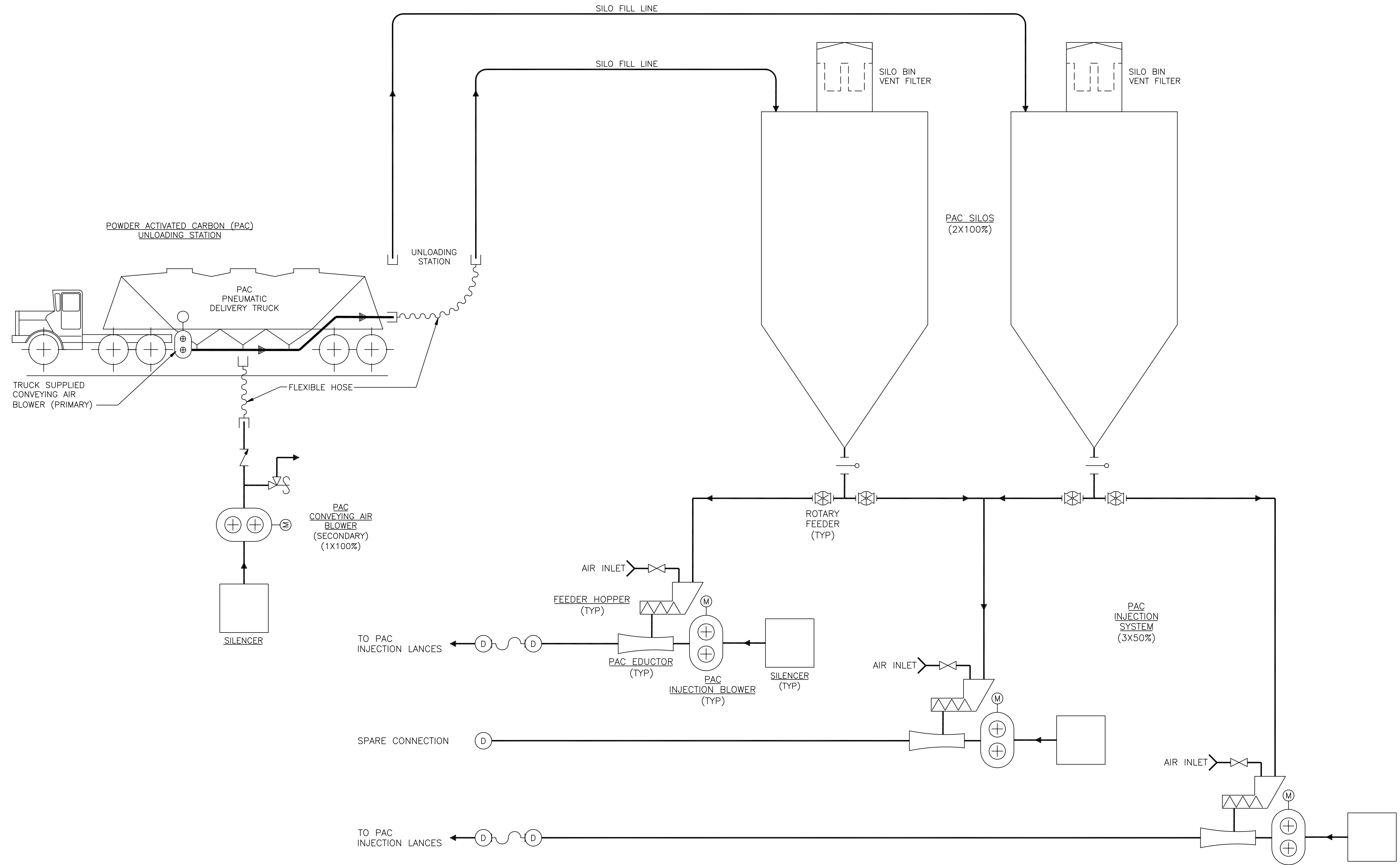
**BLACK & VEATCH CORPORATION**

CHECKED: \_\_\_\_\_ DATE: \_\_\_\_\_  
 DRAWN: HWB

**LG&E/KU - GHENT STATION**  
**PHASE 1I: AIR QUALITY CONTROL STUDY**

UNIT 2 PROCESS FLOW DIAGRAM  
 INDUCED DRAFT

PROJECT	DRAWING NUMBER	REV
	168908-G2CCE-M2145	B
CODE		
AREA		



**NOT TO BE USED FOR CONSTRUCTION**  
 THE DISTRIBUTION AND USE OF THE NATIVE FORMAT CAD FILE OF THIS DRAWING IS UNCONTROLLED. THE USER SHALL VERIFY TRACEABILITY OF THIS DRAWING TO THE LATEST CONTROLLED VERSION.

PR03292 ACAD 16.1s (LWS Tech)  
 02/21/11 14:42:02

NO	DATE	REVISIONS AND RECORD OF ISSUE	DRN	DES	CHK	PDE	APP
B	21/FEB/11	ISSUED FOR CLIENT REVIEW	PRP	SAT	MRW		
A	04/FEB/11	ISSUED FOR IN HOUSE REVIEW	HWB	NCM	MRW		

**BLACK & VEATCH CORPORATION**

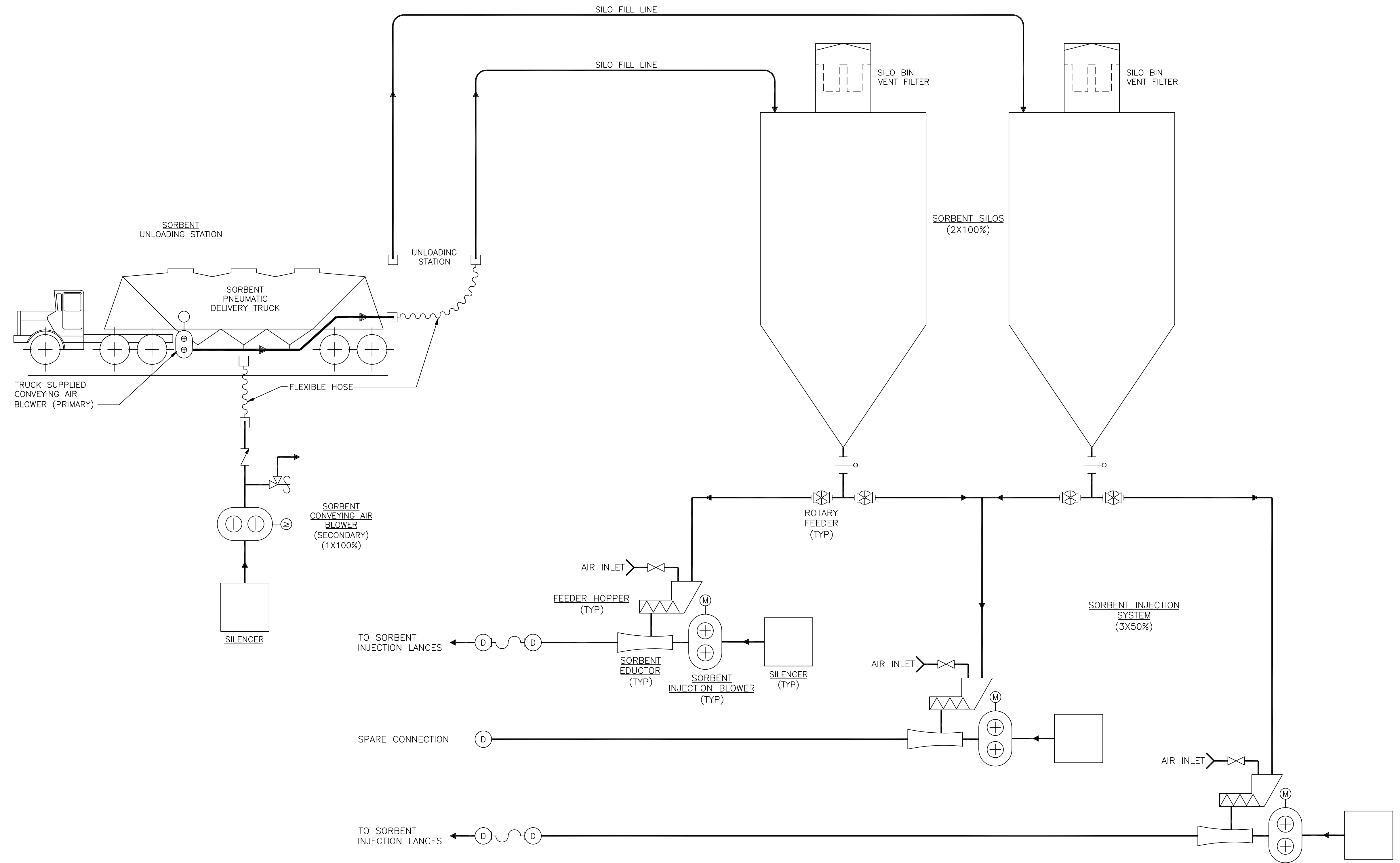
CHECKED	DATE	DRAWN	HWB
---------	------	-------	-----

**LG&E/KU - GHENT STATION**  
 PHASE 1I: AIR QUALITY CONTROL STUDY

UNIT 2 PROCESS FLOW DIAGRAM  
 POWDER ACTIVATED CARBON INJECTION

PROJECT	DRAWING NUMBER	REV
168908-G2CCH-M2148A		B
CODE	AREA	

A  
B  
C  
D  
E  
F



**NOT TO BE USED FOR CONSTRUCTION**  
 THE DISTRIBUTION AND USE OF THE NATIVE FORMAT CAD FILE OF THIS DRAWING IS UNCONTROLLED. THE USER SHALL VERIFY TRACEABILITY OF THIS DRAWING TO THE LATEST CONTROLLED VERSION.

PR03292  
 02/21/11 14:42:15  
 ACAD 16.1s (LWS Tech)  
 D1  
 1

NO	DATE	REVISIONS AND RECORD OF ISSUE	DRN	DES	CHK	PDE	APP
B	21/FEB/11	ISSUED FOR CLIENT REVIEW	PRP	SAT	MRW		
A	04/FEB/11	ISSUED FOR IN HOUSE REVIEW	HWB	NCM	MRW		

**BLACK & VEATCH CORPORATION**

CHECKED: \_\_\_\_\_ DATE: \_\_\_\_\_

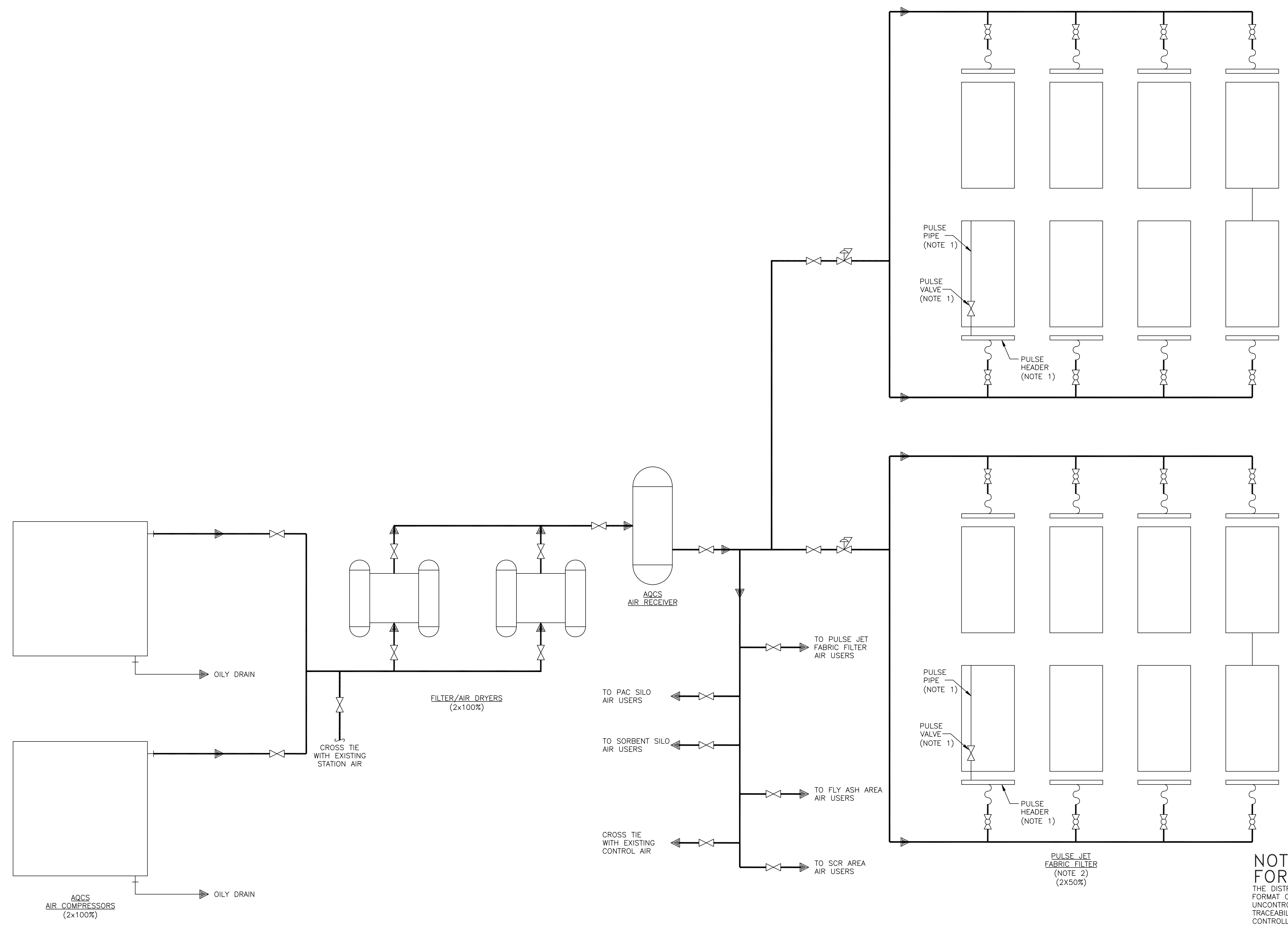
DRAWN: HWB

**LG&E/KU - GHENT STATION**  
 PHASE 1I: AIR QUALITY CONTROL STUDY

UNIT 2 PROCESS FLOW DIAGRAM  
 SORBENT INJECTION

PROJECT	DRAWING NUMBER	REV
168908-G2CCH-M2148B	B	
CODE	AREA	

- NOTES:**
1. EACH COMPARTMENT WILL HAVE MORE THAN ONE PULSE HEADER AND MULTIPLE PULSE VALVES AND PULSE PIPES. ONE SET IS SHOWN FOR CLARITY.
  2. NUMBER OF COMPARTMENTS TO BE CONFIRMED DURING DETAILED DESIGN.



**NOT TO BE USED FOR CONSTRUCTION**  
 THE DISTRIBUTION AND USE OF THE NATIVE FORMAT CAD FILE OF THIS DRAWING IS UNCONTROLLED. THE USER SHALL VERIFY TRACEABILITY OF THIS DRAWING TO THE LATEST CONTROLLED VERSION.

PR03292  
 A:\SLO\15  
 04/04/11 11:21:16  
 ACAD 16.1s (LWS Tech)  
 D1  
 1

NO	DATE	REVISIONS AND RECORD OF ISSUE	DRN	DES	CHK	PDE	APP
B	21/FEB/11	ISSUED FOR CLIENT REVIEW	PRP	SAT	MRW		
A	04/FEB/11	ISSUED FOR IN HOUSE REVIEW	HWB	NCM	MRW		

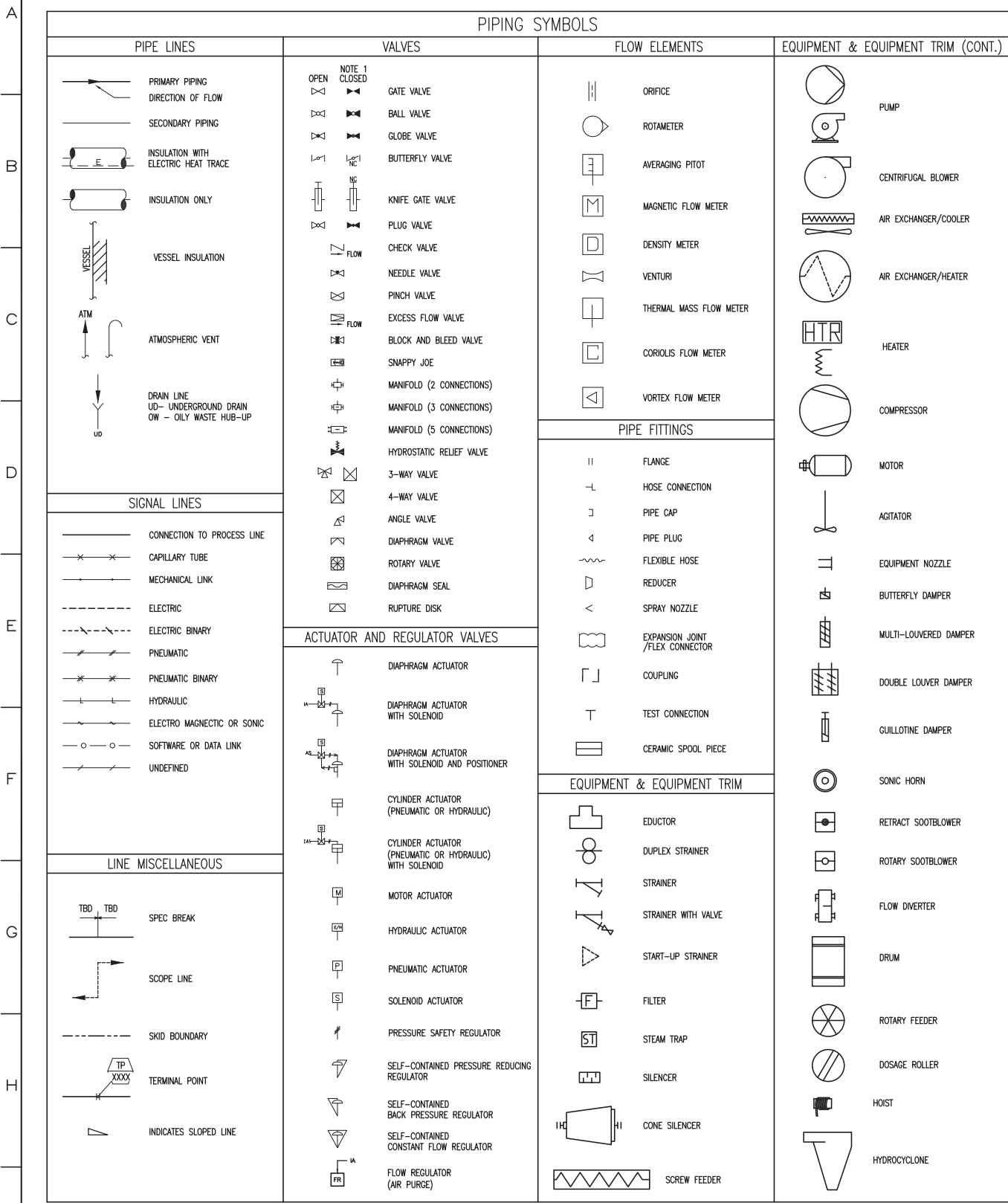
**BLACK & VEATCH CORPORATION**

DRAWN: HWB  
 CHECKED: \_\_\_\_\_  
 DATE: \_\_\_\_\_

**LG&E/KU - GHENT STATION**  
 PHASE 1I: AIR QUALITY CONTROL STUDY

**UNIT 2 PROCESS FLOW DIAGRAM**  
 AQCS COMPRESSED AIR

PROJECT	DRAWING NUMBER	REV
168908-G2CAB-M2182		B
CODE		
AREA		

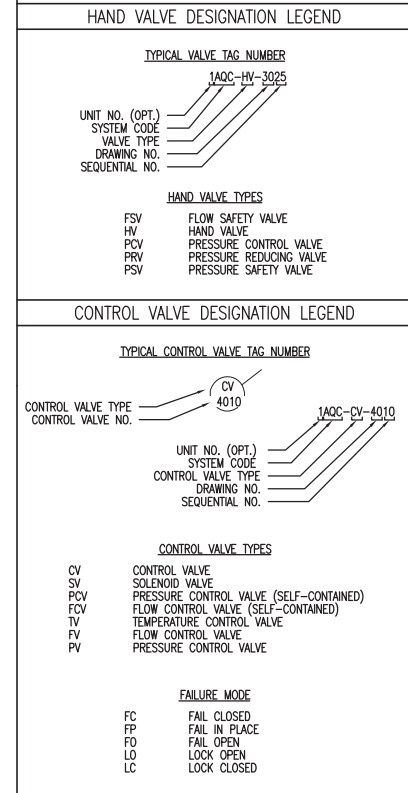
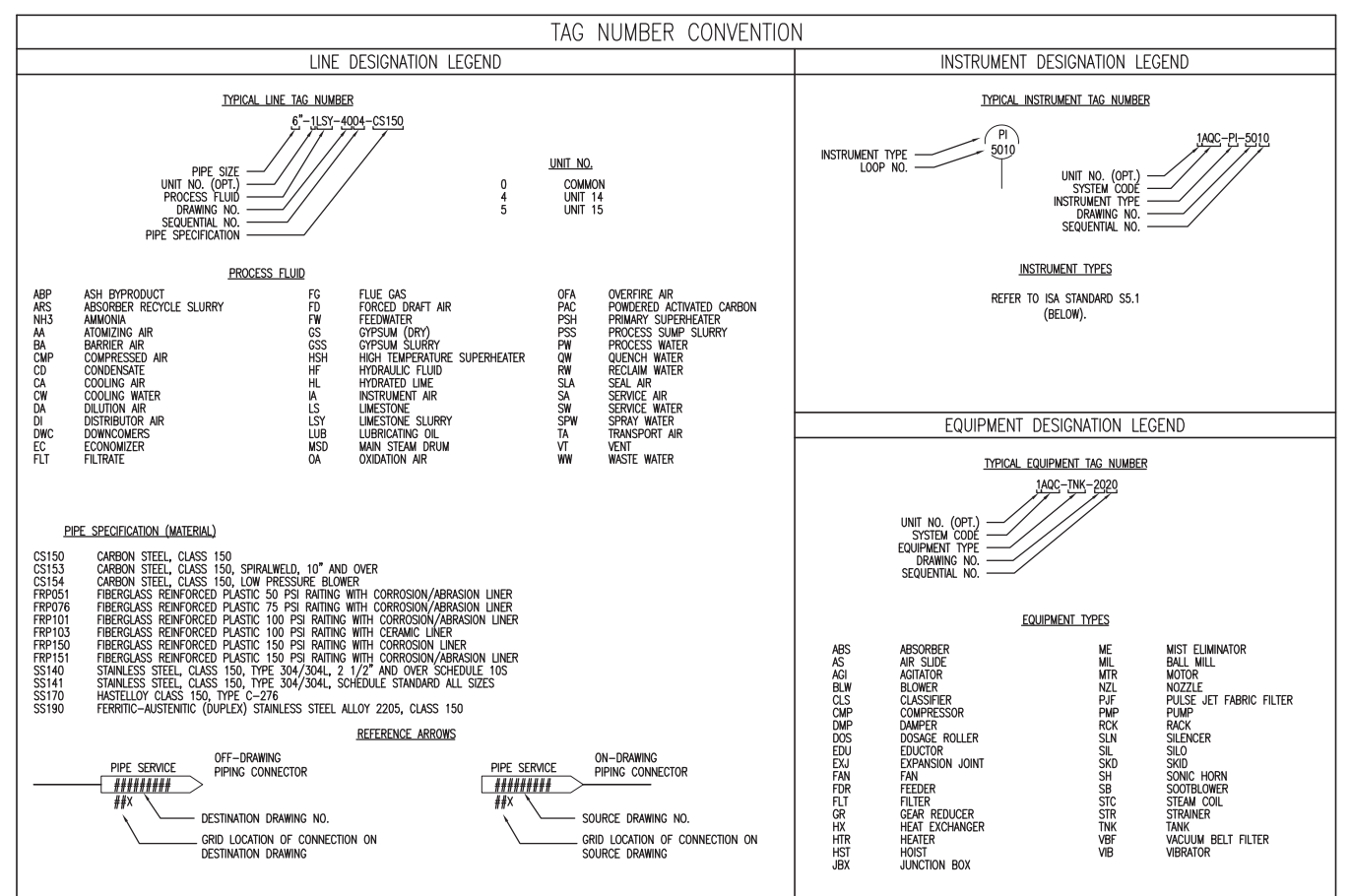


#### CONTROL FUNCTIONS

	FIELD MOUNT (NO PANEL)	MAIN PANEL OPERATOR ACCESSIBLE	INSIDE MAIN PANEL (NOT ACCESSIBLE)	SECONDARY PANEL OPERATOR ACCESSIBLE	INSIDE SECONDARY PANEL (NOT ACCESSIBLE)
PRIMARY CHOICE OR BASIC CONTROL SYSTEM					
ALTERNATIVE CHOICE OR SAFETY INSTRUMENTED SYS.					
COMPUTER SYSTEMS AND SOFTWARE					
DISCRETE					

\* NORMALLY INACCESSIBLE OR BEHIND THE PANEL DEVICES OR FUNCTIONS ARE DEPICTED BY USING THE SAME SYMBOLS BUT WITH DASHED HORIZONTAL BARS.

THIS DRAWING IS CONCEPTUAL IN NATURE AND IS NOT A COMPLETE OR FINAL WORK PRODUCT. THE ILLUSTRATED PROCESSES, SYSTEMS, DIMENSIONS, PARTS AND EQUIPMENT SET FORTH ON THIS DRAWING ARE PRELIMINARY AND SUBJECT TO REVISION. THIS DRAWING IS NOT SUITABLE FOR PROCUREMENT, MANUFACTURE OR INSTALLATION.



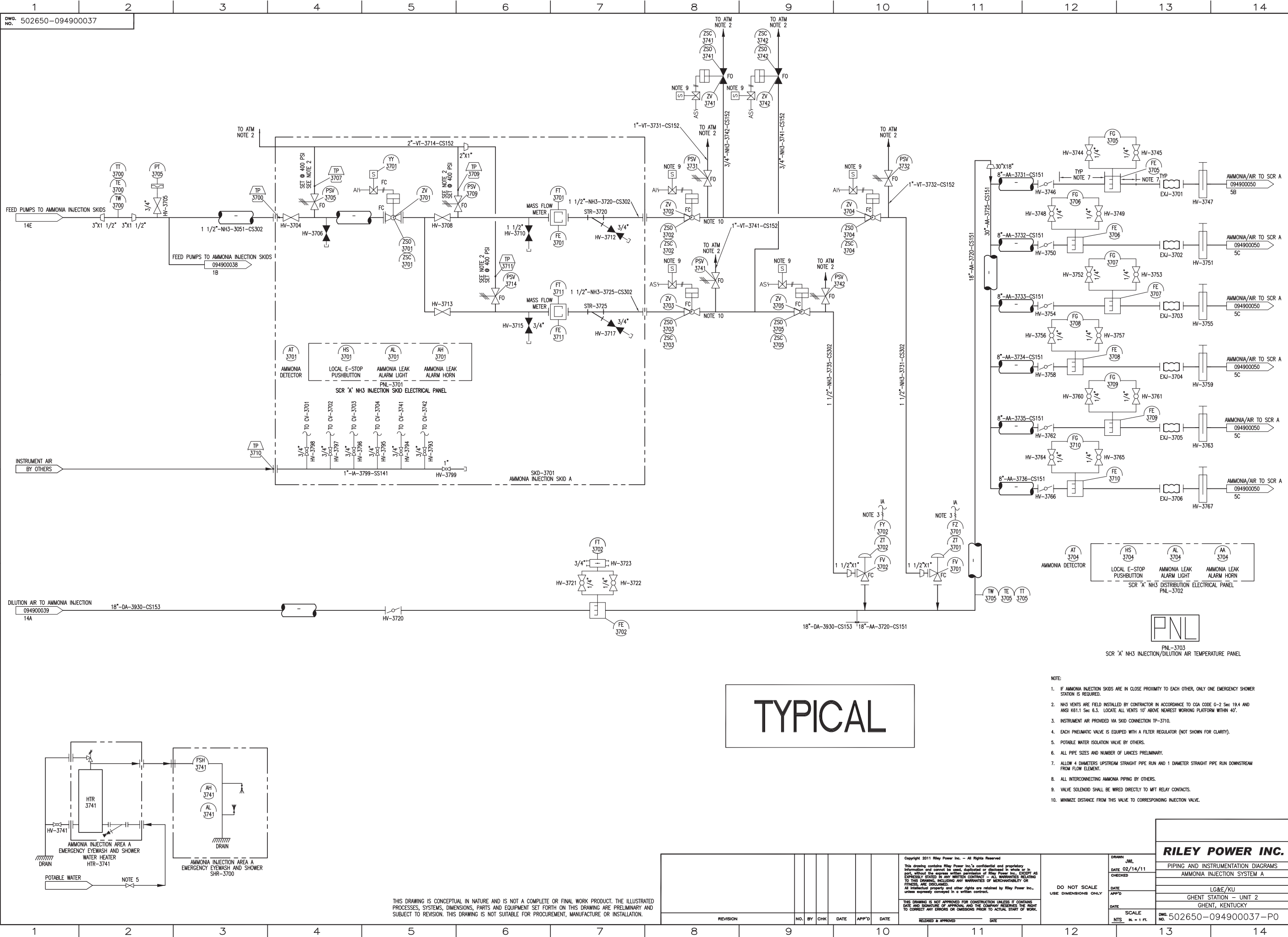
NOTES 2 & 3

#### INSTRUMENT IDENTIFICATION (ISA STANDARD S5.1)

	FIRST LETTER		SUCCEEDING LETTERS	
	MEASURED OR INITIATING VARIABLE	MODIFIER	READOUT OR PASSIVE FUNCTION	OUTPUT FUNCTION
A	ANALYSIS		ALARM	
B	BURNER, COMBUSTION		USER'S CHOICE	USER'S CHOICE
C	USER'S CHOICE		CONTROL	CLOSE
D	DENSITY	DIFFERENTIAL		
E	VOLTAGE		SENSOR (PRIMARY ELEMENT)	
F	FLOW RATE	RATIO (FRACTION)		
G	GROUND FAULT		GLASS VIEWING DEVICE	
H	HAND			HIGH
I	CURRENT		INDICATE	
J	POWER	SCAN		
K	TIME, TIME SCHEDULE	TIME RATE OF CHANGE		CONTROL STATION
L	LEVEL		LIGHT	LOW
M	USER'S CHOICE	MOMENTARY		MIDDLE, INTERMEDIATE
N	USER'S CHOICE		USER'S CHOICE	USER'S CHOICE
O	USER'S CHOICE		ORIFICE, RESTRICTION	OPEN
P	PRESSURE, VACUUM		POINT (TEST) CONNECTION	
Q	QUANTITY	INTEGRATE, TOTALIZE		
R	RADIATION		RECORD	
S	SPEED, FREQUENCY	SAFETY		SWITCH
T	TEMPERATURE			TRANSMIT
U	MULTIVARIABLE		MULTIFUNCTION	MULTIFUNCTION
V	VIBRATION, MECH. ANALYSIS			VALVE, DAMPER, LOUVER
W	WEIGHT, FORCE		WELL	
X	UNCLASSIFIED	X-AXIS	UNCLASSIFIED	UNCLASSIFIED
Y	EVENT, STATE OR PRESENCE	Y-AXIS		RELAY, COMPUTE, CONVERT
Z	POSITION, DIMENSION	Z-AXIS		DRIVER, ACTUATOR UNCLASSIFIED FINAL CONTROL ELEMENT

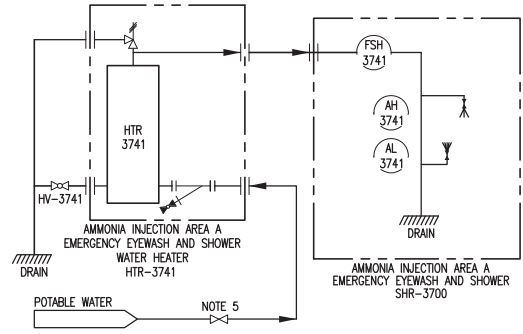
- NOTES:
- NORMALLY CLOSED VALVES ARE VALVES THAT REMAIN CLOSED DURING "NORMAL" DAY TO DAY OPERATION OF THE FACILITY. VALVES SHOWN OPEN WILL BE OPENED OR CLOSED DEPENDING ON THE OPERATING MODE DESIRED.
  - ITEMS MARKED USER'S CHOICE ARE LABELED ON THE DRAWING.
  - MAY BE SUPERSEDED BY PLANT CONVENTION.

<p>Copyright 2011 Riley Power Inc. - All Rights Reserved</p> <p>This drawing contains Riley Power Inc.'s confidential and proprietary information and cannot be used, duplicated or disclosed in whole or in part, without the express written permission of Riley Power Inc. EXCEPT AS EXPRESSLY STATED IN ANY WRITTEN CONTRACT. RILEY POWER INC. MAKES NO WARRANTIES, INCLUDING ANY WARRANTIES OF MERCHANTABILITY OR FITNESS FOR PARTICULAR PURPOSES, IN CONNECTION WITH THIS DRAWING. ALL INTELLECTUAL PROPERTY AND OTHER RIGHTS ARE RESERVED BY Riley Power Inc., unless expressly conveyed in a written contract.</p> <p>THIS DRAWING IS NOT APPROVED FOR CONSTRUCTION UNLESS IT CONTAINS DATE AND SIGNATURE OF APPROVAL, AND THE COMPANY RESERVES THE RIGHT TO CORRECT ANY ERRORS OR OMISSIONS PRIOR TO ACTUAL START OF WORK.</p>	<p><b>RILEY POWER INC.</b></p> <p>PIPING AND INSTRUMENTATION DIAGRAM</p> <p>LEGEND</p> <p>LG&amp;E/KU</p> <p>GHEAT STATION - UNIT 2</p> <p>GHEAT, KENTUCKY</p> <p>DWG. NO. 502650-094900002-PO</p>
<p>DO NOT SCALE USE DIMENSIONS ONLY</p>	<p>DATE: 02/14/11</p> <p>SCALE: NTS. 1/8" = 1 FT.</p>



TYPICAL

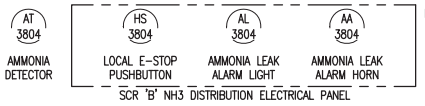
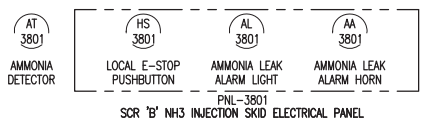
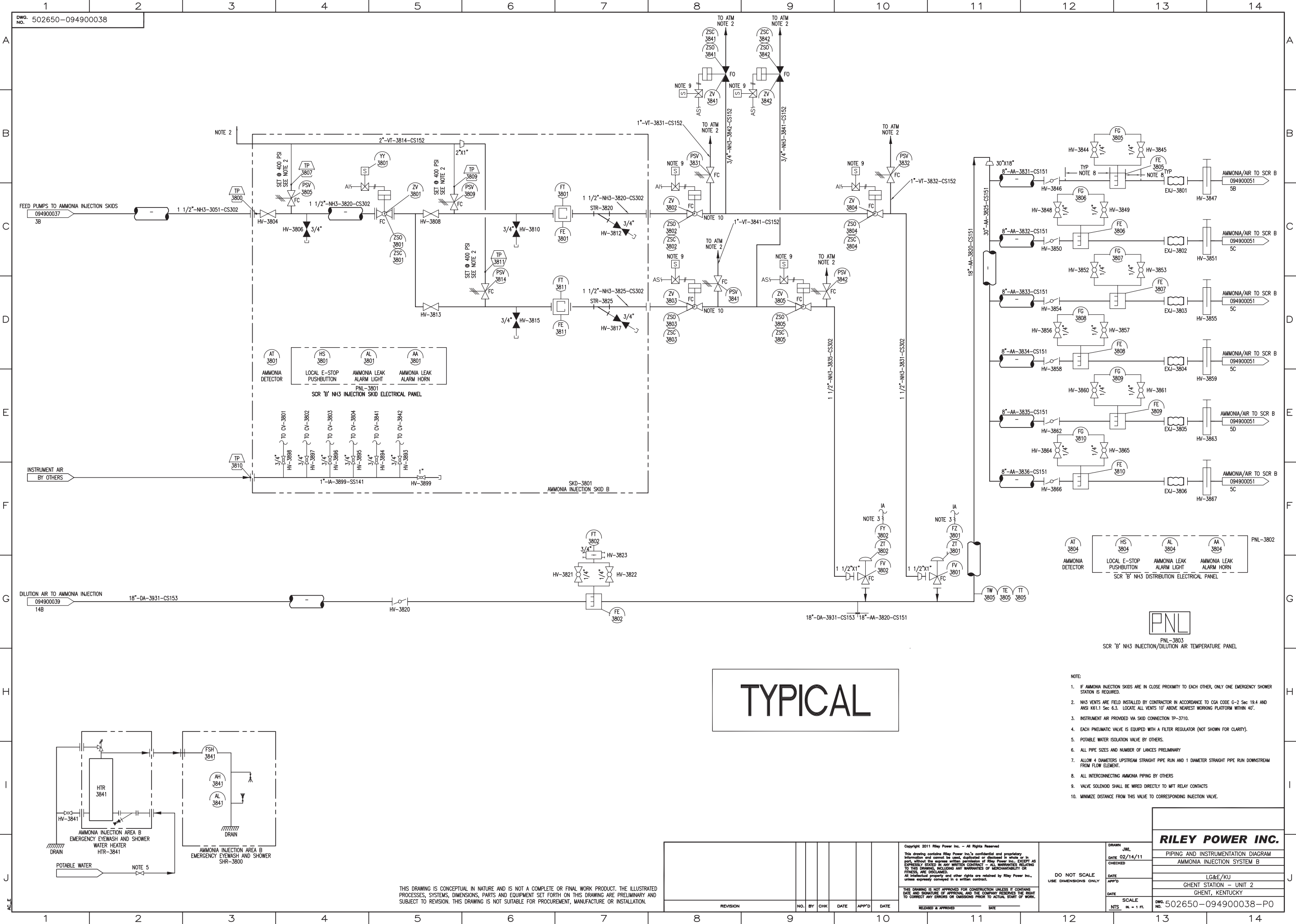
- NOTE:
- IF AMMONIA INJECTION SKIDS ARE IN CLOSE PROXIMITY TO EACH OTHER, ONLY ONE EMERGENCY SHOWER STATION IS REQUIRED.
  - NH3 VENTS ARE FIELD INSTALLED BY CONTRACTOR IN ACCORDANCE TO CGA CODE G-2 SEC 19.4 AND ANSI K61.1 SEC 6.3. LOCATE ALL VENTS 10' ABOVE NEAREST WORKING PLATFORM WITHIN 40'.
  - INSTRUMENT AIR PROVIDED VIA SKID CONNECTION TP-3710.
  - EACH PNEUMATIC VALVE IS EQUIPPED WITH A FILTER REGULATOR (NOT SHOWN FOR CLARITY).
  - POTABLE WATER ISOLATION VALVE BY OTHERS.
  - ALL PIPE SIZES AND NUMBER OF LANCES PRELIMINARY.
  - ALLOW 4 DIAMETERS UPSTREAM STRAIGHT PIPE RUN AND 1 DIAMETER STRAIGHT PIPE RUN DOWNSTREAM FROM FLOW ELEMENT.
  - ALL INTERCONNECTING AMMONIA PIPING BY OTHERS.
  - VALVE SOLENOID SHALL BE WIRED DIRECTLY TO MFT RELAY CONTACTS.
  - MINIMIZE DISTANCE FROM THIS VALVE TO CORRESPONDING INJECTION VALVE.



THIS DRAWING IS CONCEPTUAL IN NATURE AND IS NOT A COMPLETE OR FINAL WORK PRODUCT. THE ILLUSTRATED PROCESSES, SYSTEMS, DIMENSIONS, PARTS AND EQUIPMENT SET FORTH ON THIS DRAWING ARE PRELIMINARY AND SUBJECT TO REVISION. THIS DRAWING IS NOT SUITABLE FOR PROCUREMENT, MANUFACTURE OR INSTALLATION.

Copyright 2011 Riley Power Inc. - All Rights Reserved This drawing contains Riley Power Inc.'s confidential and proprietary information and cannot be used, duplicated or disclosed in whole or in part, without the express written permission of Riley Power Inc. EXCEPT AS EXPRESSLY STATED IN ANY WRITTEN CONTRACT. ALL WARRANTIES RELATING TO THIS DRAWING, INCLUDING ANY WARRANTIES OF MERCHANTABILITY OR FITNESS, ARE DISCLAIMED. All intellectual property and other rights are retained by Riley Power Inc., unless expressly conveyed in a written contract.						DRAWN: JWL DATE: 02/14/11 CHECKED: [ ] DATE: [ ] APP'D: [ ] DATE: [ ]		<b>RILEY POWER INC.</b> PIPING AND INSTRUMENTATION DIAGRAMS AMMONIA INJECTION SYSTEM A LG&E/KU GHENT STATION - UNIT 2 GHENT, KENTUCKY		DO NOT SCALE USE DIMENSIONS ONLY	
THIS DRAWING IS NOT APPROVED FOR CONSTRUCTION UNLESS IT CONTAINS DATE AND SIGNATURE OF APPROVAL AND THE COMPANY RESERVES THE RIGHT TO CORRECT ANY ERRORS OR OMISSIONS PRIOR TO ACTUAL START OF WORK.						SCALE: NTS, 1/4" = 1 FT. DWG. NO.: 502650-094900037-PO		REVISION: [ ] NO.: [ ] BY: [ ] CHK: [ ] DATE: [ ] APP'D: [ ] DATE: [ ]		RELEASED & APPROVED: [ ] DATE: [ ]	

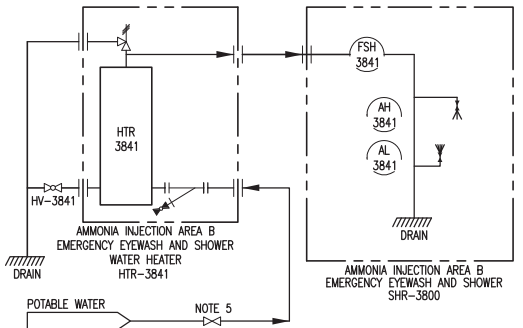




PNL-3803 SCR 'B' NH3 INJECTION/DILUTION AIR TEMPERATURE PANEL

TYPICAL

- NOTE:
1. IF AMMONIA INJECTION SKIDS ARE IN CLOSE PROXIMITY TO EACH OTHER, ONLY ONE EMERGENCY SHOWER STATION IS REQUIRED.
  2. NH3 VENTS ARE FIELD INSTALLED BY CONTRACTOR IN ACCORDANCE TO CGA CODE G-2 SEC 19.4 AND ANSI K61.1 SEC 6.3. LOCATE ALL VENTS 10' ABOVE NEAREST WORKING PLATFORM WITHIN 40'.
  3. INSTRUMENT AIR PROVIDED VIA SKID CONNECTION TP-3710.
  4. EACH PNEUMATIC VALVE IS EQUIPPED WITH A FILTER REGULATOR (NOT SHOWN FOR CLARITY).
  5. POTABLE WATER ISOLATION VALVE BY OTHERS.
  6. ALL PIPE SIZES AND NUMBER OF LANCES PRELIMINARY.
  7. ALLOW 4 DIAMETERS UPSTREAM STRAIGHT PIPE RUN AND 1 DIAMETER STRAIGHT PIPE RUN DOWNSTREAM FROM FLOW ELEMENT.
  8. ALL INTERCONNECTING AMMONIA PIPING BY OTHERS.
  9. VALVE SOLENOID SHALL BE WIRED DIRECTLY TO MFT RELAY CONTACTS.
  10. MINIMIZE DISTANCE FROM THIS VALVE TO CORRESPONDING INJECTION VALVE.



THIS DRAWING IS CONCEPTUAL IN NATURE AND IS NOT A COMPLETE OR FINAL WORK PRODUCT. THE ILLUSTRATED PROCESSES, SYSTEMS, DIMENSIONS, PARTS AND EQUIPMENT SET FORTH ON THIS DRAWING ARE PRELIMINARY AND SUBJECT TO REVISION. THIS DRAWING IS NOT SUITABLE FOR PROCUREMENT, MANUFACTURE OR INSTALLATION.

REVISION	NO.	BY	CHK	DATE	APP'D	DATE

Copyright 2011 Riley Power Inc. - All Rights Reserved  
 This drawing contains Riley Power Inc.'s confidential and proprietary information and cannot be used, duplicated or disclosed in whole or in part, without the express written permission of Riley Power Inc. EXCEPT AS EXPRESSLY STATED IN ANY WRITTEN CONTRACT. ALL WARRANTIES RELATING TO THIS DRAWING, INCLUDING ANY WARRANTIES OF MERCHANTABILITY OR FITNESS, ARE DISCLAIMED.  
 All intellectual property and other rights are retained by Riley Power Inc., unless expressly conveyed in a written contract.

THIS DRAWING IS NOT APPROVED FOR CONSTRUCTION UNLESS IT CONTAINS DATE AND SIGNATURE OF APPROVAL AND THE COMPANY RESERVES THE RIGHT TO CORRECT ANY ERRORS OR OMISSIONS PRIOR TO ACTUAL START OF WORK.

RELEASED & APPROVED \_\_\_\_\_ DATE \_\_\_\_\_

DO NOT SCALE  
 USE DIMENSIONS ONLY

DRAWN: JWL  
 DATE: 02/14/11  
 CHECKED: \_\_\_\_\_  
 DATE: \_\_\_\_\_  
 APP'D: \_\_\_\_\_  
 DATE: \_\_\_\_\_

SCALE: \_\_\_\_\_  
 NTS: IN. - 1 FT.

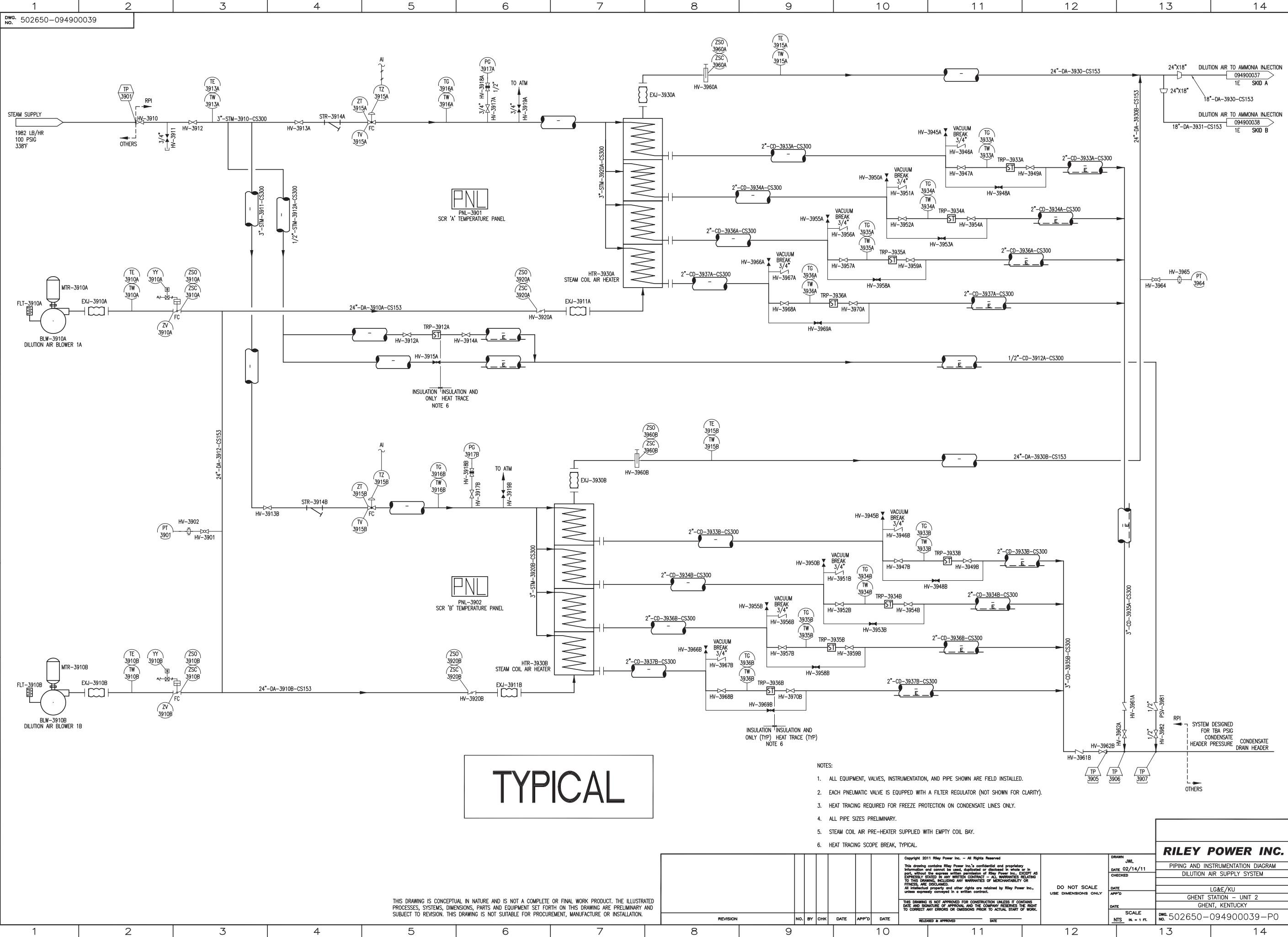
**RILEY POWER INC.**

PIPING AND INSTRUMENTATION DIAGRAM  
 AMMONIA INJECTION SYSTEM B

LC&E/KU  
 GHENT STATION - UNIT 2  
 GHENT, KENTUCKY

DWG. NO. 502650-094900038-PO



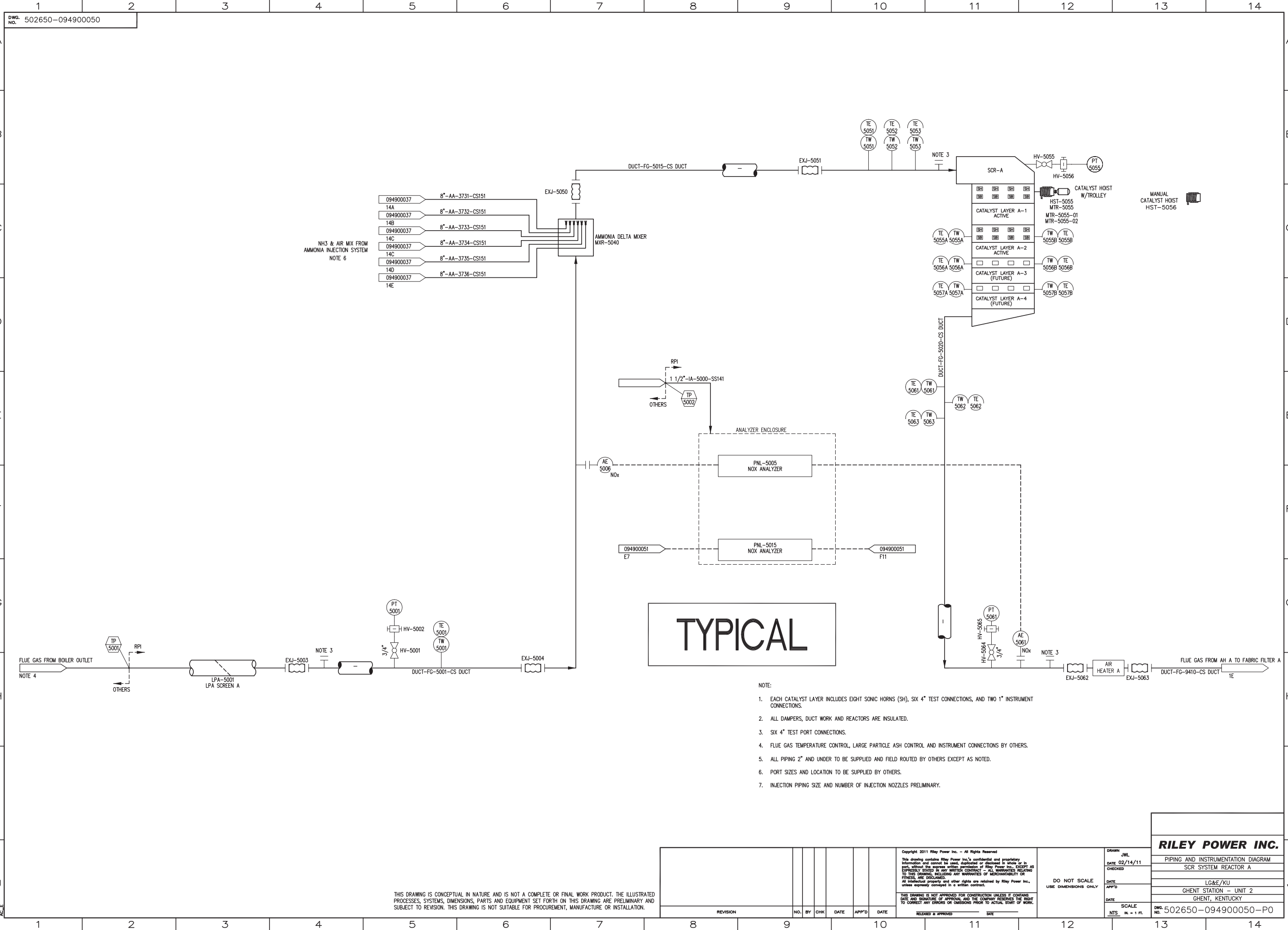


TYPICAL

- NOTES:
1. ALL EQUIPMENT, VALVES, INSTRUMENTATION, AND PIPE SHOWN ARE FIELD INSTALLED.
  2. EACH PNEUMATIC VALVE IS EQUIPPED WITH A FILTER REGULATOR (NOT SHOWN FOR CLARITY).
  3. HEAT TRACING REQUIRED FOR FREEZE PROTECTION ON CONDENSATE LINES ONLY.
  4. ALL PIPE SIZES PRELIMINARY.
  5. STEAM COIL AIR PRE-HEATER SUPPLIED WITH EMPTY COIL BAY.
  6. HEAT TRACING SCOPE BREAK, TYPICAL.

THIS DRAWING IS CONCEPTUAL IN NATURE AND IS NOT A COMPLETE OR FINAL WORK PRODUCT. THE ILLUSTRATED PROCESSES, SYSTEMS, DIMENSIONS, PARTS AND EQUIPMENT SET FORTH ON THIS DRAWING ARE PRELIMINARY AND SUBJECT TO REVISION. THIS DRAWING IS NOT SUITABLE FOR PROCUREMENT, MANUFACTURE OR INSTALLATION.

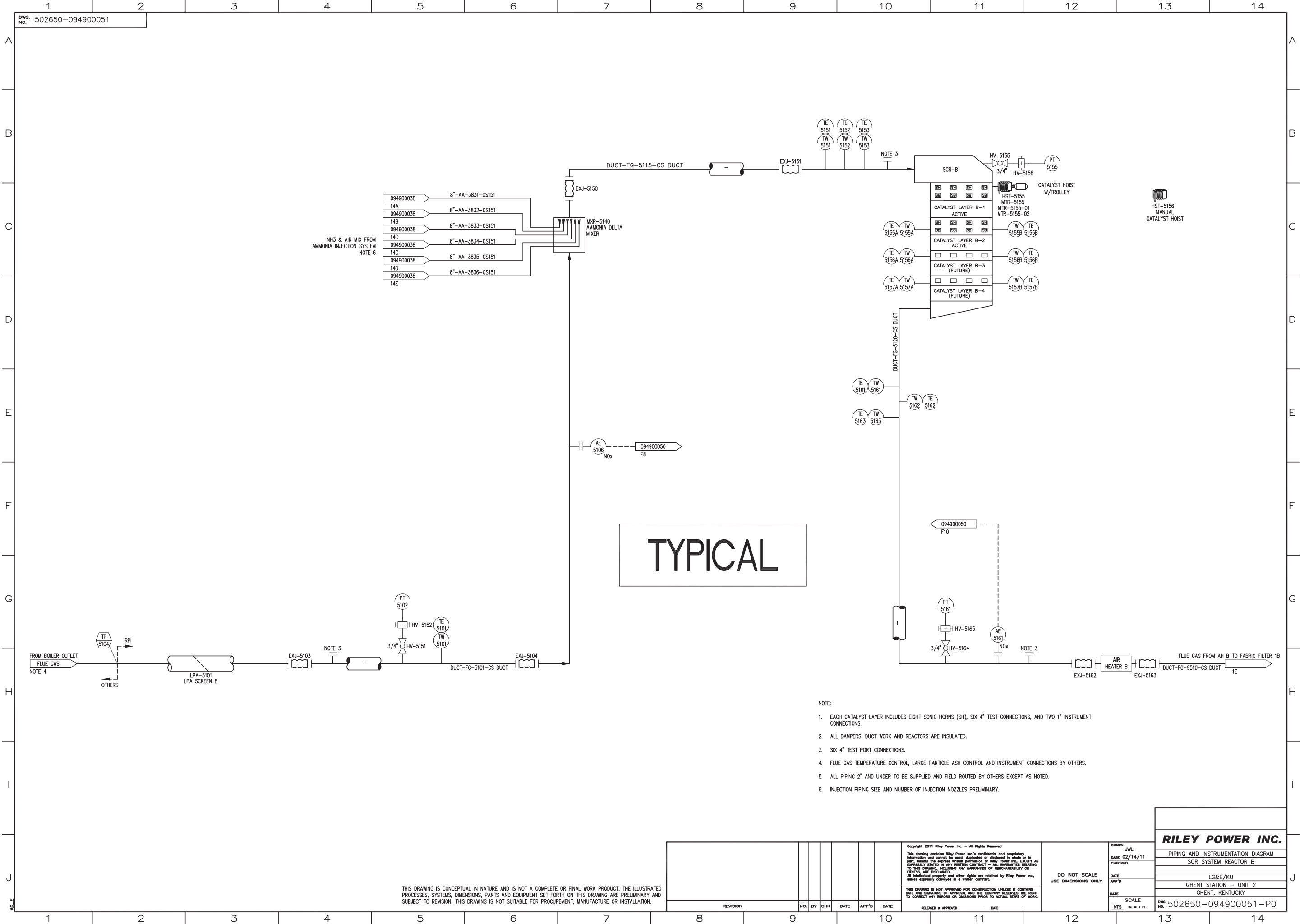
REVISION				NO.	BY	CHK	DATE	APP'D	DATE	RELEASED & APPROVED	DATE
<p>Copyright 2011 Riley Power Inc. - All Rights Reserved          This drawing contains Riley Power Inc.'s confidential and proprietary information and cannot be used, duplicated or disclosed in whole or in part, without the express written permission of Riley Power Inc. EXCEPT AS EXPRESSLY STATED IN ANY WRITTEN CONTRACT. ALL WARRANTIES RELATING TO THIS DRAWING, INCLUDING ANY WARRANTIES OF MERCHANTABILITY OR FITNESS, ARE DISCLAIMED.          All intellectual property and other rights are retained by Riley Power Inc., unless expressly conveyed in a written contract.</p> <p>THIS DRAWING IS NOT APPROVED FOR CONSTRUCTION UNLESS IT CONTAINS DATE AND SIGNATURE OF APPROVAL AND THE COMPANY RESERVES THE RIGHT TO CORRECT ANY ERRORS OR OMISSIONS PRIOR TO ACTUAL START OF WORK.</p>											
<p>DO NOT SCALE          USE DIMENSIONS ONLY</p>										<p>DRAWN: JWL          DATE: 02/14/11          CHECKED:          DATE:          APP'D:          DATE:</p>	<p><b>RILEY POWER INC.</b>          PIPING AND INSTRUMENTATION DIAGRAM          DILUTION AIR SUPPLY SYSTEM          LC&amp;E/KU          GHENT STATION - UNIT 2          GHENT, KENTUCKY</p>
<p>SCALE: NTS. 1/4" = 1 FT.          DWG. NO. 502650-094900039-PO</p>											



- NOTE:
1. EACH CATALYST LAYER INCLUDES EIGHT SONIC HORNS (SH), SIX 4" TEST CONNECTIONS, AND TWO 1" INSTRUMENT CONNECTIONS.
  2. ALL DAMPERS, DUCT WORK AND REACTORS ARE INSULATED.
  3. SIX 4" TEST PORT CONNECTIONS.
  4. FLUE GAS TEMPERATURE CONTROL, LARGE PARTICLE ASH CONTROL AND INSTRUMENT CONNECTIONS BY OTHERS.
  5. ALL PIPING 2" AND UNDER TO BE SUPPLIED AND FIELD ROUTED BY OTHERS EXCEPT AS NOTED.
  6. PORT SIZES AND LOCATION TO BE SUPPLIED BY OTHERS.
  7. INJECTION PIPING SIZE AND NUMBER OF INJECTION NOZZLES PRELIMINARY.

THIS DRAWING IS CONCEPTUAL IN NATURE AND IS NOT A COMPLETE OR FINAL WORK PRODUCT. THE ILLUSTRATED PROCESSES, SYSTEMS, DIMENSIONS, PARTS AND EQUIPMENT SET FORTH ON THIS DRAWING ARE PRELIMINARY AND SUBJECT TO REVISION. THIS DRAWING IS NOT SUITABLE FOR PROCUREMENT, MANUFACTURE OR INSTALLATION.

Copyright 2011 Riley Power Inc. - All Rights Reserved This drawing contains Riley Power Inc.'s confidential and proprietary information and cannot be used, duplicated or disclosed in whole or in part, without the express written permission of Riley Power Inc. EXCEPT AS EXPRESSLY STATED IN ANY WRITTEN CONTRACT. ALL WARRANTIES RELATING TO THIS DRAWING, INCLUDING ANY WARRANTIES OF MERCHANTABILITY OR FITNESS, ARE DISCLAIMED. All intellectual property and other rights are retained by Riley Power Inc., unless expressly conveyed in a written contract.						DRAWN: JWL DATE: 02/14/11 CHECKED: [ ] DATE: [ ] APP'D: [ ] DATE: [ ]		DO NOT SCALE USE DIMENSIONS ONLY		<b>RILEY POWER INC.</b> PIPING AND INSTRUMENTATION DIAGRAM SCR SYSTEM REACTOR A LG&E/KU GHENT STATION - UNIT 2 GHENT, KENTUCKY DWG. NO. 502650-094900050-PO	
REVISION	NO.	BY	CHK	DATE	APP'D	DATE	RELEASED & APPROVED	DATE	SCALE	NTS	IN. = 1 FT.



TYPICAL

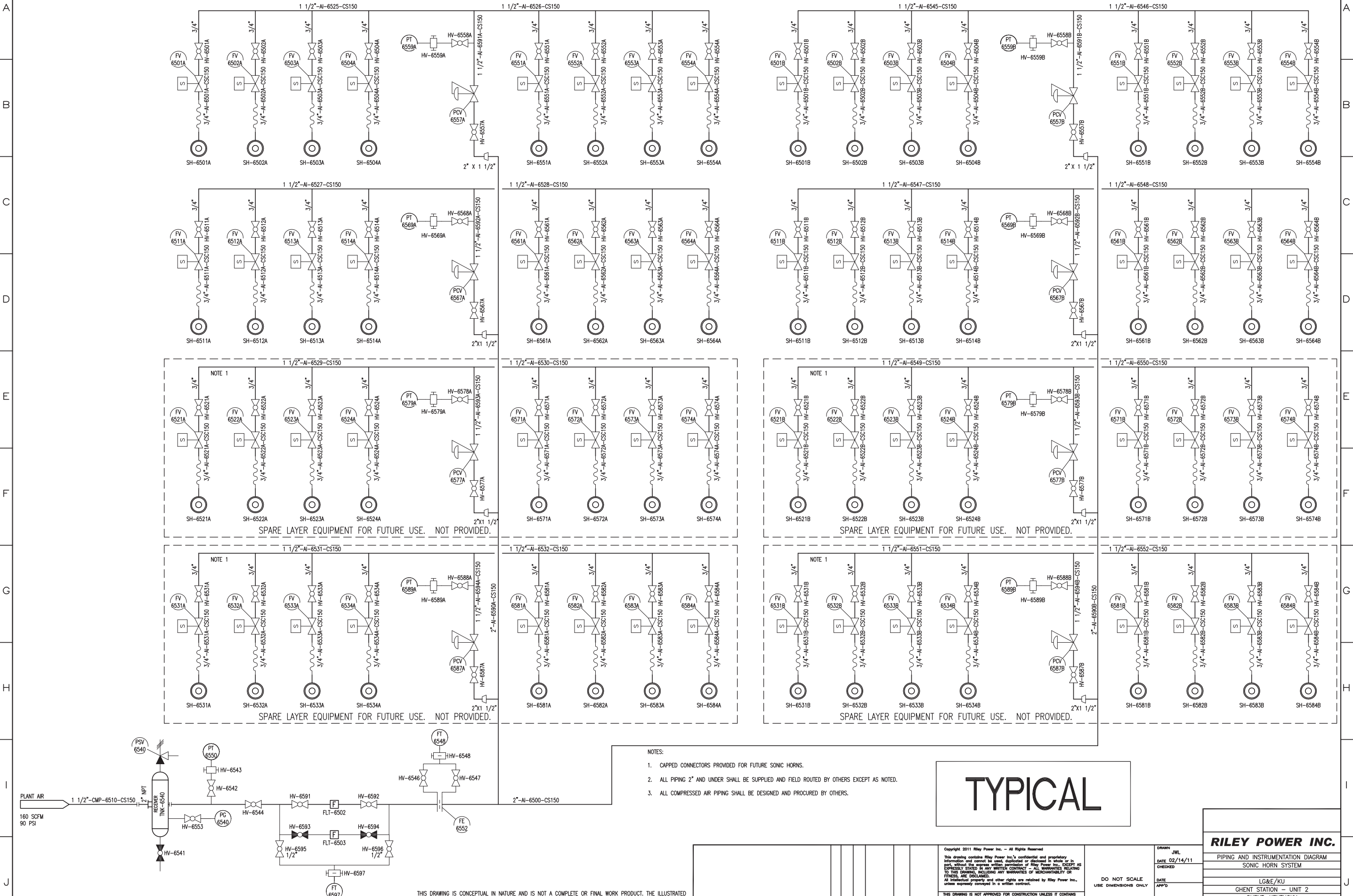
- NOTE:
1. EACH CATALYST LAYER INCLUDES EIGHT SONIC HORNS (SH), SIX 4" TEST CONNECTIONS, AND TWO 1" INSTRUMENT CONNECTIONS.
  2. ALL DAMPERS, DUCT WORK AND REACTORS ARE INSULATED.
  3. SIX 4" TEST PORT CONNECTIONS.
  4. FLUE GAS TEMPERATURE CONTROL, LARGE PARTICLE ASH CONTROL AND INSTRUMENT CONNECTIONS BY OTHERS.
  5. ALL PIPING 2" AND UNDER TO BE SUPPLIED AND FIELD ROUTED BY OTHERS EXCEPT AS NOTED.
  6. INJECTION PIPING SIZE AND NUMBER OF INJECTION NOZZLES PRELIMINARY.

THIS DRAWING IS CONCEPTUAL IN NATURE AND IS NOT A COMPLETE OR FINAL WORK PRODUCT. THE ILLUSTRATED PROCESSES, SYSTEMS, DIMENSIONS, PARTS AND EQUIPMENT SET FORTH ON THIS DRAWING ARE PRELIMINARY AND SUBJECT TO REVISION. THIS DRAWING IS NOT SUITABLE FOR PROCUREMENT, MANUFACTURE OR INSTALLATION.

<small>Copyright 2011 Riley Power Inc. - All Rights Reserved</small> <small>This drawing contains Riley Power Inc.'s confidential and proprietary information and cannot be used, duplicated or disclosed in whole or in part, without the express written permission of Riley Power Inc. EXCEPT AS EXPRESSLY STATED IN ANY WRITTEN CONTRACTS - ALL WARRANTIES RELATING TO THIS DRAWING, INCLUDING ANY WARRANTIES OF MERCHANTABILITY OR FITNESS, ARE DISCLAIMED. All intellectual property and other rights are retained by Riley Power Inc., unless expressly conveyed in a written contract.</small>						<small>DO NOT SCALE</small> <small>USE DIMENSIONS ONLY</small>	<small>THIS DRAWING IS NOT APPROVED FOR CONSTRUCTION UNLESS IT CONTAINS DATE AND SIGNATURE OF APPROVAL AND THE COMPANY RESERVES THE RIGHT TO CORRECT ANY ERRORS OR OMISSIONS PRIOR TO ACTUAL START OF WORK.</small>	<small>DATE</small> <small>SCALE</small> <small>N.T.S. IN - 1 FT.</small>	<small>DATE</small> <small>SCALE</small> <small>N.T.S. IN - 1 FT.</small>	<b>RILEY POWER INC.</b> PIPING AND INSTRUMENTATION DIAGRAM SCR SYSTEM REACTOR B LC&E/KU GHENT STATION - UNIT 2 GHENT, KENTUCKY DWG. NO. 502650-094900051-PO
REVISION	NO.	BY	CHK	DATE	APP'D	DATE				

SCR A

SCR B



NOTE 1  
SPARE LAYER EQUIPMENT FOR FUTURE USE. NOT PROVIDED.

NOTE 1  
SPARE LAYER EQUIPMENT FOR FUTURE USE. NOT PROVIDED.

NOTE 1  
SPARE LAYER EQUIPMENT FOR FUTURE USE. NOT PROVIDED.

NOTE 1  
SPARE LAYER EQUIPMENT FOR FUTURE USE. NOT PROVIDED.

- NOTES:
1. CAPPED CONNECTORS PROVIDED FOR FUTURE SONIC HORNS.
  2. ALL PIPING 2" AND UNDER SHALL BE SUPPLIED AND FIELD ROUTED BY OTHERS EXCEPT AS NOTED.
  3. ALL COMPRESSED AIR PIPING SHALL BE DESIGNED AND PROCURED BY OTHERS.

**TYPICAL**

REVISION		NO.	BY	CHK	DATE	APP'D	DATE

Copyright 2011 Riley Power Inc. - All Rights Reserved This drawing contains Riley Power Inc.'s confidential and proprietary information and cannot be used, duplicated or disclosed in whole or in part, without the express written permission of Riley Power Inc. EXCEPT AS EXPRESSLY STATED IN ANY WRITTEN CONTRACT. ALL WARRANTIES RELATING TO THIS DRAWING, INCLUDING ANY WARRANTIES OF MERCHANTABILITY OR FITNESS, ARE DISCLAIMED. All intellectual property and other rights are retained by Riley Power Inc., unless expressly conveyed in a written contract.		DO NOT SCALE USE DIMENSIONS ONLY
DATE	SCALE	DWG. NO.
02/14/11	1/4" = 1'-0"	502650-094900065-PO

**RILEY POWER INC.**  
 PIPING AND INSTRUMENTATION DIAGRAM  
 SONIC HORN SYSTEM  
 LC&E/KU  
 GHENT STATION - UNIT 2  
 GHENT, KENTUCKY

THIS DRAWING IS CONCEPTUAL IN NATURE AND IS NOT A COMPLETE OR FINAL WORK PRODUCT. THE ILLUSTRATED PROCESSES, SYSTEMS, DIMENSIONS, PARTS AND EQUIPMENT SET FORTH ON THIS DRAWING ARE PRELIMINARY AND SUBJECT TO REVISION. THIS DRAWING IS NOT SUITABLE FOR PROCUREMENT, MANUFACTURE OR INSTALLATION.