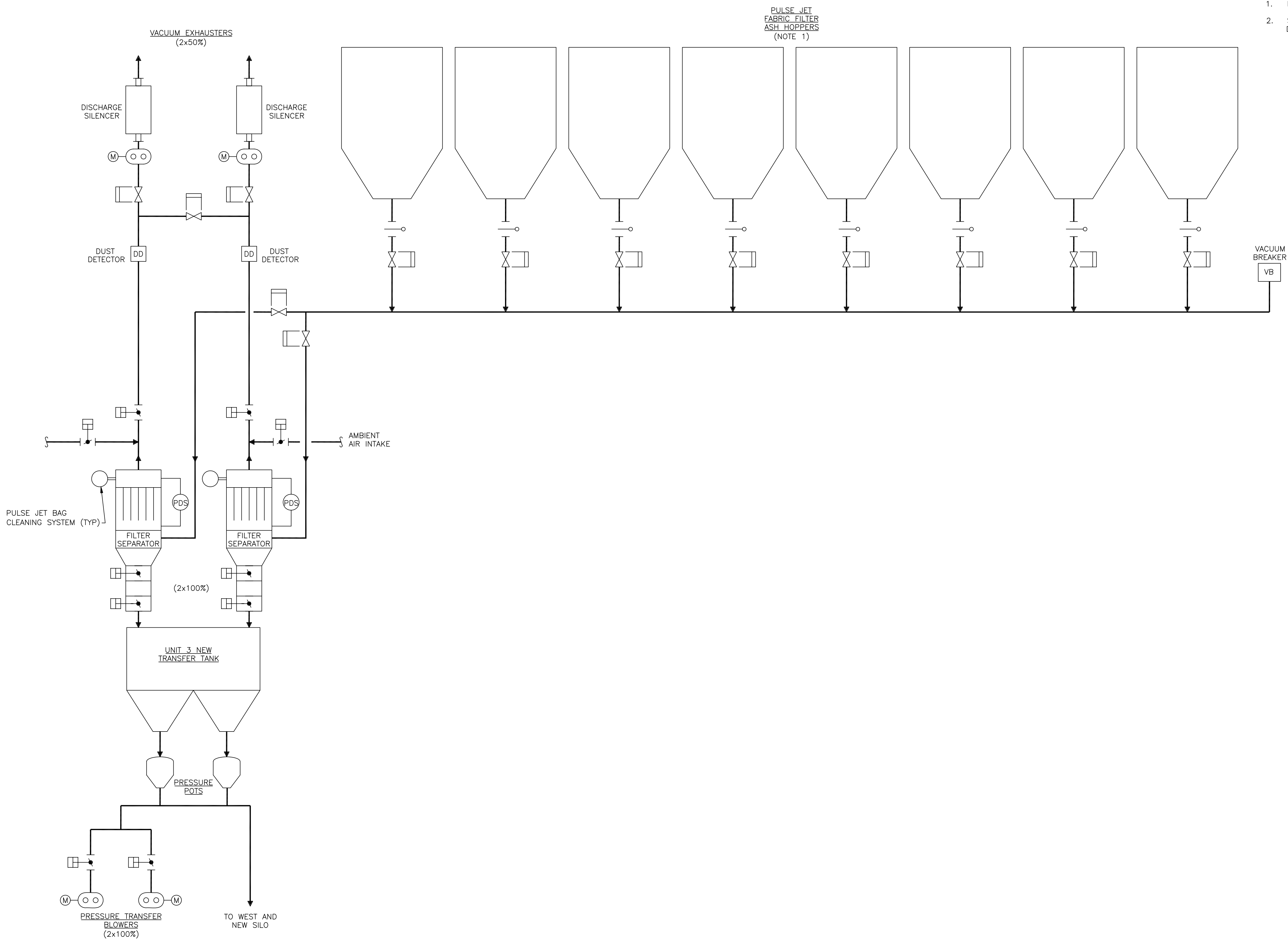


- NOTES:
1. NUMBER OF HOPPERS TO BE CONFIRMED DURING DETAILED DESIGN.
 2. SIZE AND QUANTITY OF ADDITIONAL EQUIPMENT REQUIRED TO BE DETERMINED DURING DETAILED DESIGN.



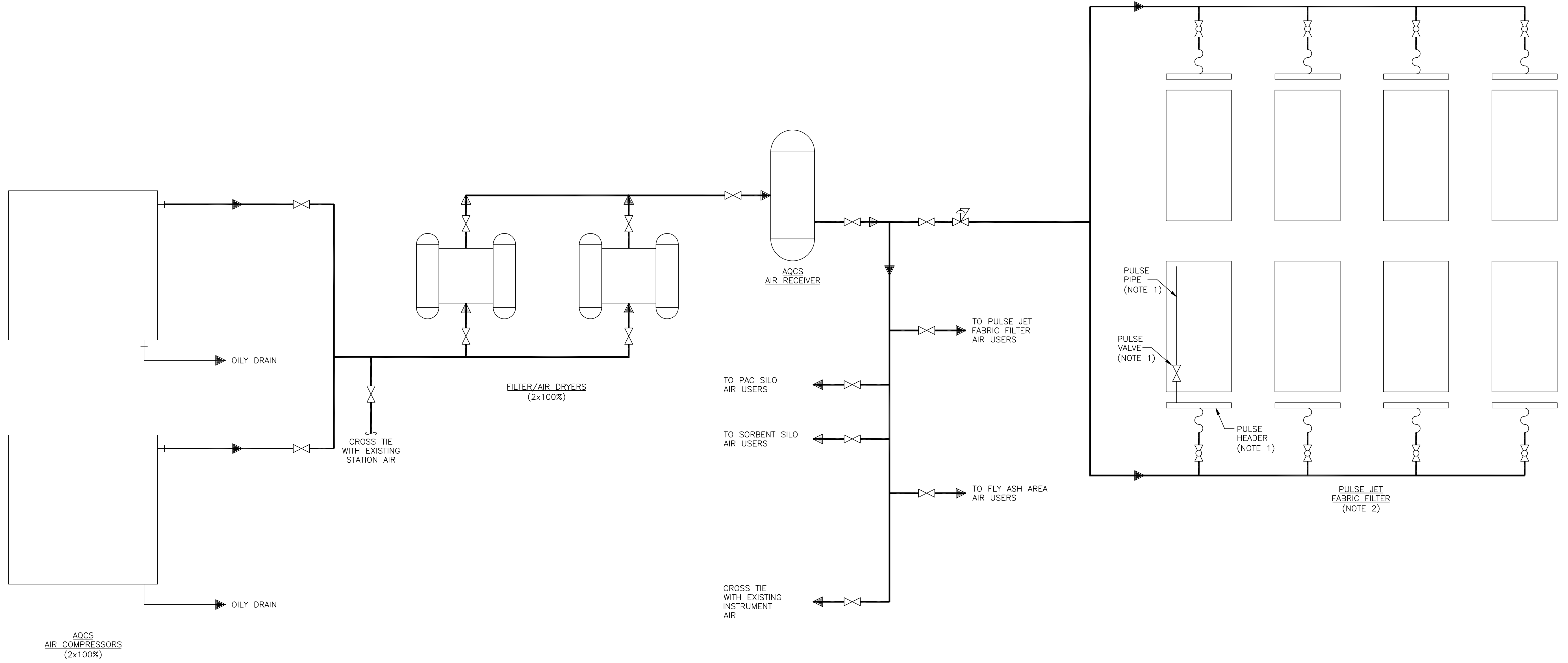
NOT TO BE USED FOR CONSTRUCTION
 THE DISTRIBUTION AND USE OF THE NATIVE FORMAT CAD FILE OF THIS DRAWING IS UNCONTROLLED. THE USER SHALL VERIFY TRACEABILITY OF THIS DRAWING TO THE LATEST CONTROLLED VERSION.

PR03292 D1 ACAD 16.1s (LWS Tech) 03/09/11 08:13:23

NO	DATE	REVISIONS AND RECORD OF ISSUE	DRN	DES	CHK	PDE	APP
B	27/JAN/11	ISSUED FOR CLIENT REVIEW	PRP	NCM	MRW		
A	14/JAN/11	ISSUED FOR IN HOUSE REVIEW	HWB	NCM	MRW		

	LG&E/KU – MILL CREEK STATION PHASE II: AIR QUALITY CONTROL STUDY	PROJECT 168908-M3ASB-M2022	DRAWING NUMBER 168908-M3ASB-M2022	REV B
	UNIT 3 PROCESS FLOW DIAGRAM FLY ASH HANDLING	CODE AREA		

- NOTES:**
1. EACH COMPARTMENT WILL HAVE MORE THAN ONE PULSE HEADER AND MULTIPLE PULSE VALVES AND PULSE PIPES. ONE SET IS SHOWN FOR CLARITY.
 2. NUMBER OF COMPARTMENTS TO BE CONFIRMED DURING DETAILED DESIGN.



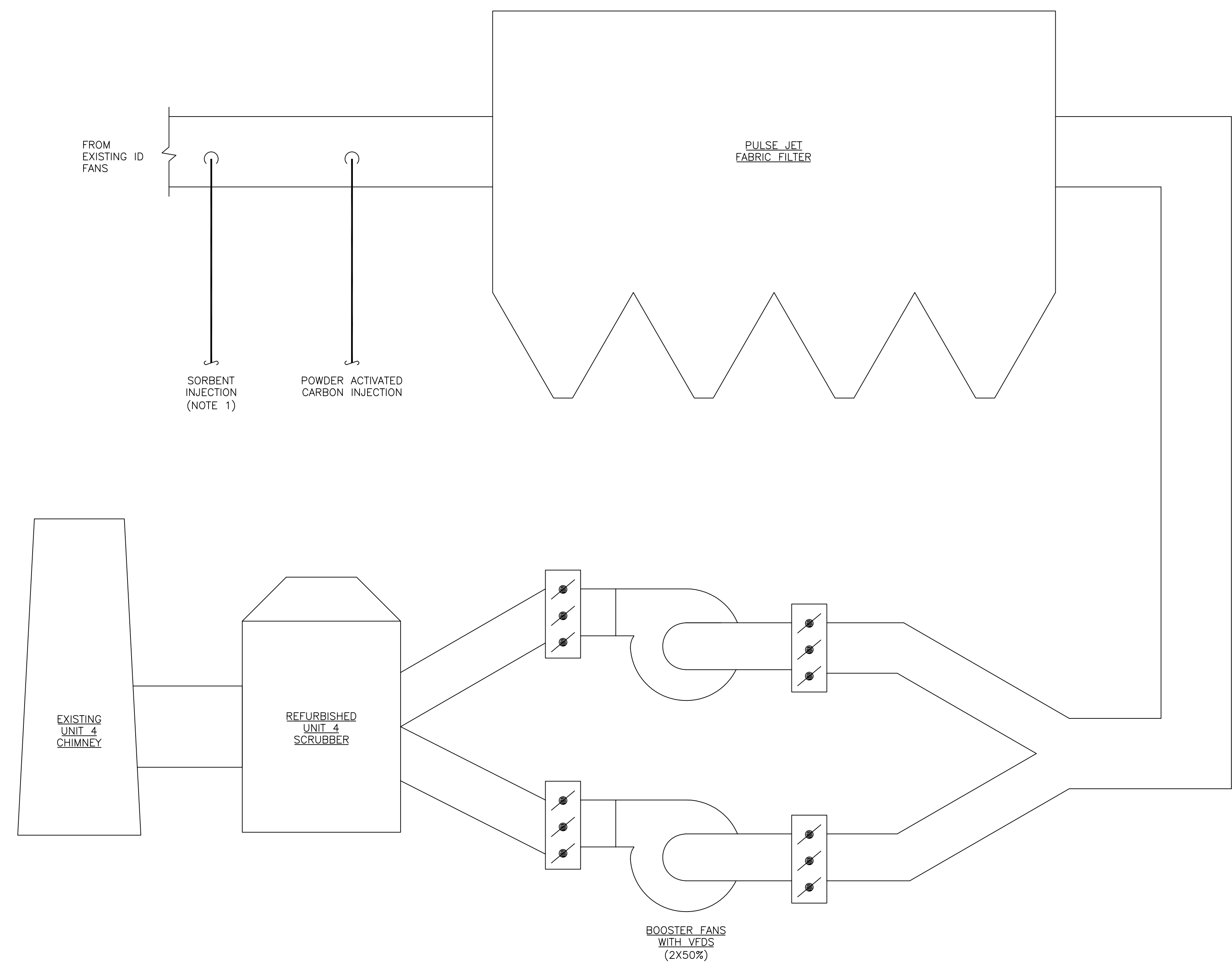
NOT TO BE USED FOR CONSTRUCTION
 THE DISTRIBUTION AND USE OF THE NATIVE FORMAT CAD FILE OF THIS DRAWING IS UNCONTROLLED. THE USER SHALL VERIFY TRACEABILITY OF THIS DRAWING TO THE LATEST CONTROLLED VERSION.

PR03292
 A17350/13
 01/25/11 08:28:21
 ACAD 16.1s (LWS Tech)

NO	DATE	REVISIONS AND RECORD OF ISSUE	DRN	DES	CHK	PDE	APP
B	27/JAN/11	ISSUED FOR CLIENT REVIEW	PRP	NCM	MRW		
A	14/JAN/11	ISSUED FOR IN HOUSE REVIEW	HWB	NCM	MRW		

	LG&E/KU - MILL CREEK STATION PHASE II: AIR QUALITY CONTROL STUDY	PROJECT 168908-M3CAB-M2182	DRAWING NUMBER B
	UNIT 3 PROCESS FLOW DIAGRAM AQCS COMPRESSED AIR	CODE AREA	

NOTES:
 1. SORBENT INJECTION POINT DEPENDENT ON SORBENT USED.



NOT TO BE USED FOR CONSTRUCTION
 THE DISTRIBUTION AND USE OF THE NATIVE FORMAT CAD FILE OF THIS DRAWING IS UNCONTROLLED. THE USER SHALL VERIFY TRACEABILITY OF THIS DRAWING TO THE LATEST CONTROLLED VERSION.

PR03292 ACAD 16.1s (LWS Tech) 01/26/11 07:21:24

NO	DATE	REVISIONS AND RECORD OF ISSUE	DRN	DES	CHK	PDE	APP
B	27/JAN/11	ISSUED FOR CLIENT REVIEW	PRP	NCM	MRW		
A	14/JAN/11	ISSUED FOR IN HOUSE REVIEW	HWB	NCM	MRW		

BLACK & VEATCH CORPORATION

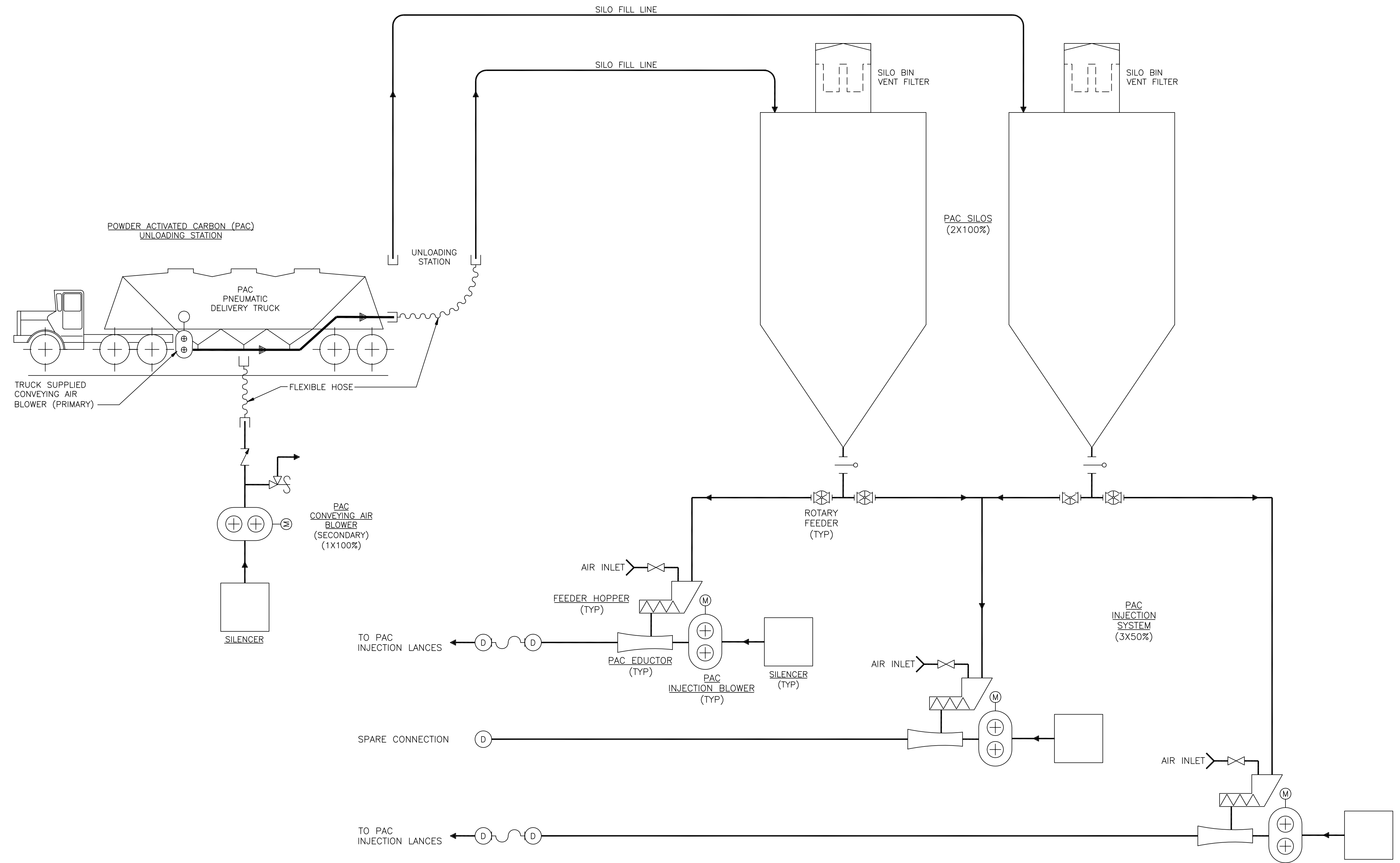
DRAWN: HWB
 DATE: _____

LG&E/KU - MILL CREEK STATION
 PHASE II: AIR QUALITY CONTROL STUDY

UNIT 3 PROCESS FLOW DIAGRAM INDUCED DRAFT

PROJECT	DRAWING NUMBER	REV
168908-M3CCE-M2145		B
CODE	AREA	

A
B
C
D
E
F



NOT TO BE USED FOR CONSTRUCTION
 THE DISTRIBUTION AND USE OF THE NATIVE FORMAT CAD FILE OF THIS DRAWING IS UNCONTROLLED. THE USER SHALL VERIFY TRACEABILITY OF THIS DRAWING TO THE LATEST CONTROLLED VERSION.

PR03292
 A17510/13
 01/25/11 08:28:35

NO	DATE	REVISIONS AND RECORD OF ISSUE	DRN	DES	CHK	PDE	APP
B	27/JAN/11	ISSUED FOR CLIENT REVIEW	PRP	NCM	MRW		
A	14/JAN/11	ISSUED FOR IN HOUSE REVIEW	HWB	NCM	MRW		

BLACK & VEATCH CORPORATION

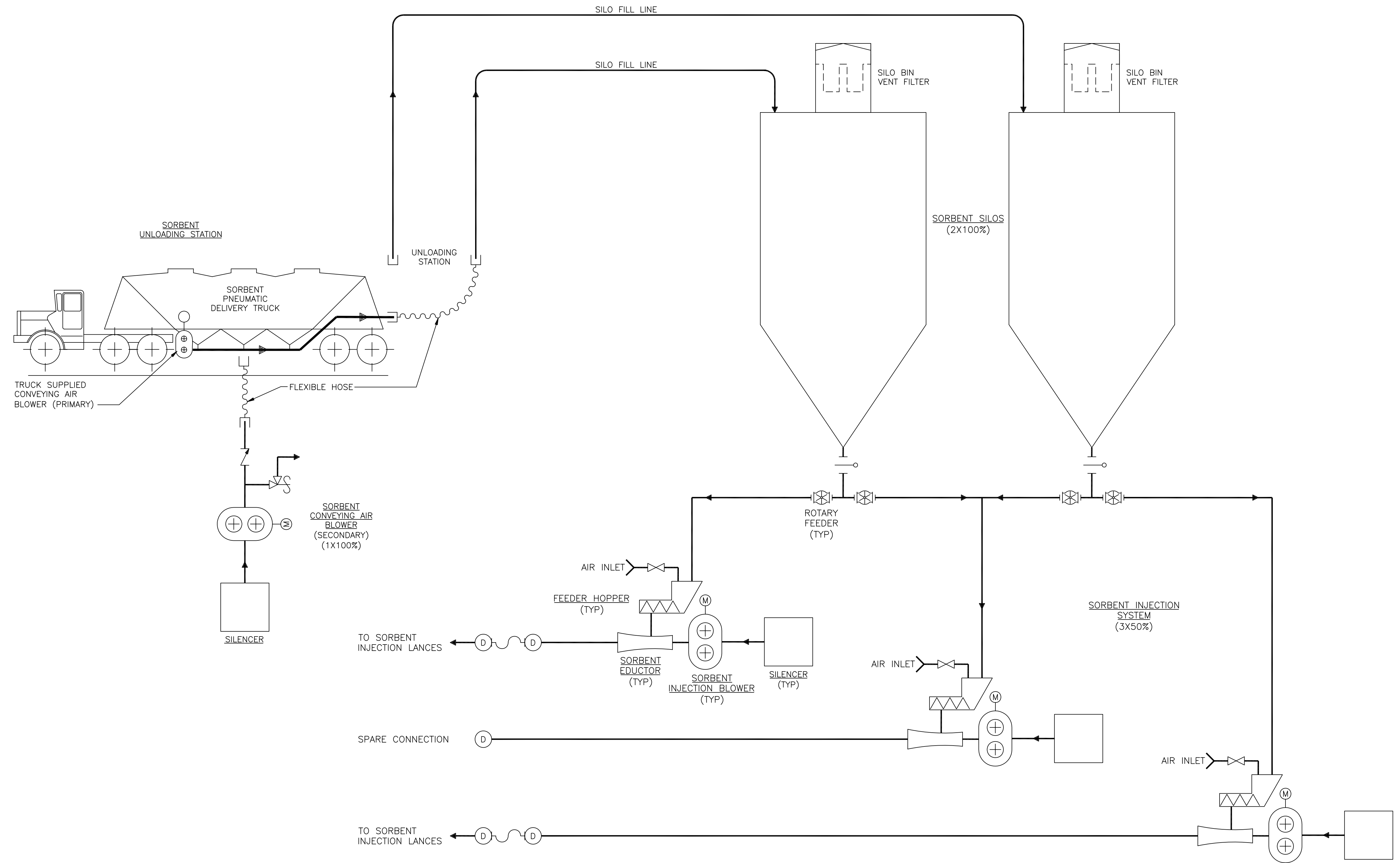
DRAWN: HWB
 DATE: _____

LG&E/KU – MILL CREEK STATION
PHASE II: AIR QUALITY CONTROL STUDY

UNIT 3 PROCESS FLOW DIAGRAM
 POWDER ACTIVATED CARBON INJECTION

PROJECT	DRAWING NUMBER	REV
168908-M3CCH-M2148A	B	
CODE	AREA	

A
B
C
D
E
F



NOT TO BE USED FOR CONSTRUCTION
 THE DISTRIBUTION AND USE OF THE NATIVE FORMAT CAD FILE OF THIS DRAWING IS UNCONTROLLED. THE USER SHALL VERIFY TRACEABILITY OF THIS DRAWING TO THE LATEST CONTROLLED VERSION.

PR03292
 21/12/10
 01/25/11 08:28:28
 ACAD 16.1s (LWS Tech)

NO	DATE	REVISIONS AND RECORD OF ISSUE	DRN	DES	CHK	PDE	APP
B	27/JAN/11	ISSUED FOR CLIENT REVIEW	PRP	NCM	MRW		
A	14/JAN/11	ISSUED FOR IN HOUSE REVIEW	HWB	NCM	MRW		

BLACK & VEATCH CORPORATION

DRAWN: HWB
 DATE: _____

LG&E/KU – MILL CREEK STATION
PHASE II: AIR QUALITY CONTROL STUDY

UNIT 3 PROCESS FLOW DIAGRAM
 SORBENT INJECTION

PROJECT	DRAWING NUMBER	REV
168908-M3CCH-M2148B	B	
CODE		
AREA		