

COMMONWEALTH OF KENTUCKY  
BEFORE THE PUBLIC SERVICE COMMISSION

In the Matter of:

WILMER AND PAULINE CONN	)	
	)	
COMPLAINANTS	)	
	)	CASE NO.
V.	)	2010-00049
	)	
FLEMING COUNTY WATER ASSOCIATION	)	
	)	
DEFENDANT	)	

COMMISSION STAFF'S NOTICE OF  
INFORMAL CONFERENCE

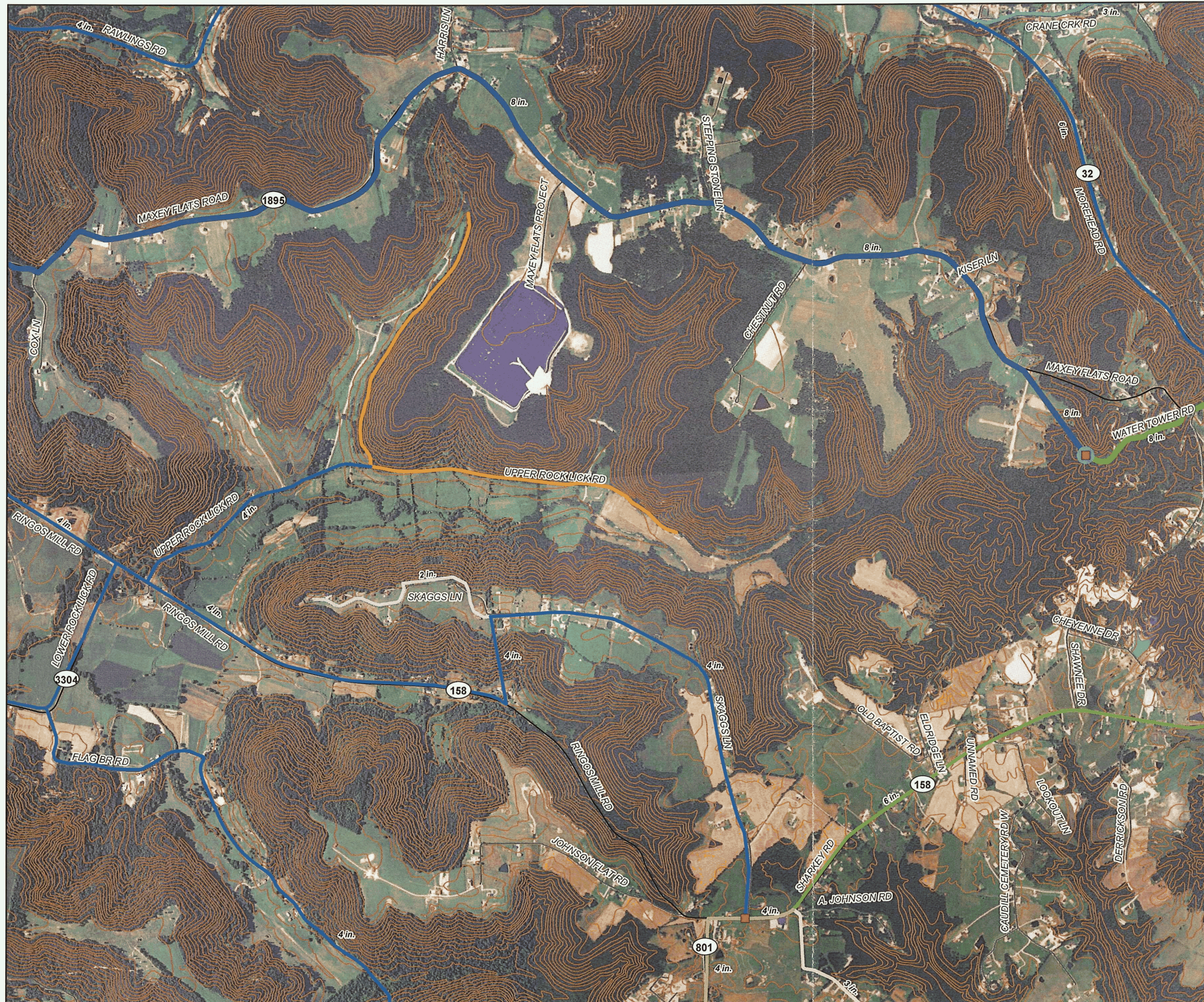
Commission Staff hereby gives notice that an informal teleconference will be held on July 21, 2010 at 2:00 p.m., Eastern Daylight Time. Parties shall access this conference by telephoning (502) 564-3940 and requesting bridge number 7098. Two maps that will be discussed during the conference are attached to this notice.

  
\_\_\_\_\_  
Jeff Derouen  
Executive Director  
Public Service Commission  
P.O. Box 615  
Frankfort, KY 40602

DATED: JUN 30 2010

cc: Parties of Record

**Case 2010-00049:  
Wilmer and Pauline Conn, Complainant,  
vs. Fleming County Water Assoc., Defendant**



**Water Meters**

■ Water Meters

**Water Tanks**

● Water Tanks

**Water Lines**

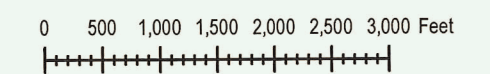
- FCWA, 2" Diameter
- FCWA, 3" Diameter
- FCWA, 4" Diameter
- FCWA, 6" Diameter
- FCWA, 8" Diameter
- FCWA, Retired, 4" Diameter
- ROWAN WATER, 3" Diameter
- ROWAN WATER, 4" Diameter
- ROWAN WATER, 6" Diameter
- ROWAN WATER, 8" Diameter

Water utility data is from the Water Resource Information System, maintained by the Kentucky Infrastructure Authority. Most of the water lines follow the centerlines of streets; the streets are named, but may not be visible.

- State Roads
- Local Roads

— Twenty Foot Contours

FSA Color Ortho Imagery 2008 - 1 Meter



June 24, 2010





McKee

Donnell  
Ferguson Ray  
McClure

1" = 660 ft.

Wilmer and Pauline Conn  
P.O. Box 218  
Clearfield, KY 40313

Eugene Jett  
Superintendent  
Fleming County Water Association, Inc.  
P. O. Box 327  
Flemingsburg, KY 41041

Honorable Marvin W Suit  
Attorney At Law  
Suit, McCartney & Price, PLLC  
207 Court Square  
Flemingsburg, KY 41041