



an e-on company

RECEIVED

FEB 17 2010

PUBLIC SERVICE
COMMISSION

Jeff DeRouen
Executive Director
Kentucky Public Service Commission
211 Sower Boulevard
Frankfort, Kentucky 40602-0615

**Louisville Gas and
Electric Company**
State Regulation and Rates
220 West Main Street
PO Box 32010
Louisville, Kentucky 40232
www.eon-us.com

Robert M. Conroy
Director - Rates
T 502-627-3324
F 502-627-3213
robert.conroy@eon-us.com

February 17, 2010

**RE: *AN EXAMINATION OF THE APPLICATION OF THE
FUEL ADJUSTMENT CLAUSE OF LOUISVILLE GAS
AND ELECTRIC COMPANY FROM MAY 1, 2009
THROUGH OCTOBER 31, 2009 - CASE NO. 2009-00508***

Dear Mr. DeRouen:

Enclosed please find an original and ten (10) copies of the Response of Louisville Gas and Electric Company to Information Requested in the Appendix of the Commission's Order dated January 27, 2010, in the above-referenced proceeding.

Also enclosed are an original and ten (10) copies of a Petition for Confidential Protection regarding certain information provided in response to Question No. 19.

Due to the unavailability of Frederick D. Jackson to sign his verification page, the Company will file his verification page separately.

Please contact me if you have any questions concerning this filing.

Sincerely,

A handwritten signature in black ink, appearing to read 'R. M. Conroy', with a long horizontal flourish extending to the right.

Robert M. Conroy

Enclosures

COMMONWEALTH OF KENTUCKY

RECEIVED

BEFORE THE PUBLIC SERVICE COMMISSION FEB 17 2010

PUBLIC SERVICE
COMMISSION

In the Matter of:

| | | |
|-----------------------------|---|------------|
| AN EXAMINATION OF THE |) | |
| APPLICATION OF THE FUEL |) | |
| ADJUSTMENT CLAUSE OF |) | CASE NO. |
| LOUISVILLE GAS AND ELECTRIC |) | 2009-00508 |
| COMPANY FROM MAY 1, 2009 |) | |
| THROUGH OCTOBER 31, 2009 |) | |

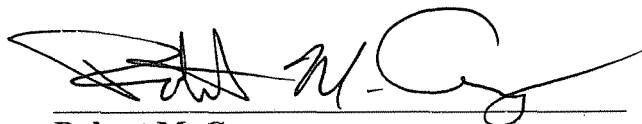
RESPONSE OF
LOUISVILLE GAS AND ELECTRIC COMPANY
TO
INFORMATION REQUESTED IN
APPENDIX OF COMMISSION'S ORDER
DATED JANUARY 27, 2010

FILED: February 17, 2010

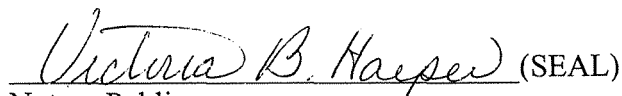
VERIFICATION

**COMMONWEALTH OF KENTUCKY)
) SS:
COUNTY OF JEFFERSON)**

The undersigned, **Robert M. Conroy**, being duly sworn, deposes and says that he is Director - Rates for E.ON U.S. Services, Inc., and that he has personal knowledge of the matters set forth in the responses for which he is identified as the witness, and the answers contained therein are true and correct to the best of his information, knowledge and belief.


Robert M. Conroy

Subscribed and sworn to before me, a Notary Public in and before said County and State, this 15th day of February 2010.


Notary Public (SEAL)

My Commission Expires:

Sept 20, 2010

VERIFICATION

COMMONWEALTH OF KENTUCKY)
) SS:
COUNTY OF JEFFERSON)

The undersigned, Charles R. Schram, being duly sworn, deposes and says that he is Director – Energy Planning, Analysis and Forecasting for E.ON U.S. Services, Inc., and that he has personal knowledge of the matters set forth in the responses for which he is identified as the witness, and the answers contained therein are true and correct to the best of his information, knowledge and belief.

Handwritten signature of Charles R. Schram
Charles R. Schram

Subscribed and sworn to before me, a Notary Public in and before said County and State, this 15th day of February 2010.

Handwritten signature of Victoria B. Harper (SEAL)
Notary Public

My Commission Expires:

Sept 20, 2010

VERIFICATION

COMMONWEALTH OF KENTUCKY)
) SS:
COUNTY OF JEFFERSON)

The undersigned, **Mike Dotson**, being duly sworn, deposes and says that he is Manager – LG&E and KU Fuels for E.ON U.S. Services, Inc., and that he has personal knowledge of the matters set forth in the responses for which he is identified as the witness, and the answers contained therein are true and correct to the best of his information, knowledge and belief.

Mike Dotson
Mike Dotson

Subscribed and sworn to before me, a Notary Public in and before said County and State, this 15th day of February 2010.

Victoria B. Harper (SEAL)
Notary Public

My Commission Expires:

Sept 20, 2010

LOUISVILLE GAS AND ELECTRIC COMPANY

**Response to Information Requested in Appendix of
Commission's Order Dated January 27, 2010**

Case No. 2009-00508

Question No. 1

Witness: Mike Dotson

Q-1. For the period from May 1, 2009 through October 31, 2009, list each vendor from whom coal was purchased and the quantities and the nature of each purchase (e.g., spot or contract).

| A-1. | <u>PURCHASE VENDOR</u> | <u>PURCHASE TONNAGE</u> | <u>TYPE</u> |
|------|-----------------------------------|------------------------------------|--------------------|
| | Alliance | 2,141,764 | Contract |
| | Armstrong Coal | 876,045 | Contract |
| | Charolais Coal | 85,432 | Contract |
| | Consol | 101,778 | Contract |
| | Knight Hawk | 9,565 | Spot |
| | Marietta Coal Company | 25,896 | Contract |
| | Marietta Coal Company | 39,299 | Spot |
| | Patriot Coal Company | 241,449 | Contract |
| | Patriot Coal Company | 26,400 | Spot |
| | Peabody Coal Sales | 506,738 | Contract |
| | Rhino Energy | 77,651 | Contract |
| | Western Kentucky Minerals | 24,954 | Spot |
| | Western Kentucky Minerals | <u>84,118</u> | Contract |
| | TOTAL | 4,241,089 | |

LOUISVILLE GAS AND ELECTRIC COMPANY

**Response to Information Requested in Appendix of
Commission's Order Dated January 27, 2010**

Case No. 2009-00508

Question No. 2

Witness: Robert M. Conroy

- Q-2. For the period from May 1, 2009 through October 31, 2009, list each vendor from whom natural gas was purchased for generation and the quantities and the nature of each purchase (e.g., spot or contract).
- A-2. Please see the attachment for the list of vendors, associated quantities, and nature of natural gas purchases.

Please note that purchases from Louisville Gas & Electric (IntraCo) are primarily for LG&E owned coal and gas fired generation served by the local distribution company; however, other natural gas purchases are made on an aggregate basis and not by utility ownership percentages of individual generating units. LG&E and KU have joint ownership in certain CT units. Trimble County Units 5 and 6 are owned 71% by KU and 29% by LG&E. Trimble County Units 7, 8, 9, and 10 are owned 63% by KU and 37% by LG&E. Brown Unit 5 and Paddy's Run Unit 13 are owned 47% by KU and 53% by LG&E. Brown Units 6 and 7 are owned 62% by KU and 38% by LG&E. Fuel expenses, not individual natural gas purchase transactions, are allocated to the Companies based on their respective ownership percentages.

Natural Gas Purchases 05/1/2009 - 10/31/2009

| <i>Purchase</i> | | |
|----------------------------|--------------|-------------|
| <i>Vendor</i> | <i>MMBTU</i> | <i>Type</i> |
| BG Energy Merchants | 32,000 | Spot |
| BP Energy | 36,120 | Spot |
| Chevron Natural Gas | 31,400 | Spot |
| CIMA Energy | 76,800 | Spot |
| Colonial Energy | 177,871 | Spot |
| Columbia Gas KY | 1,270 | Spot* |
| Conoco Phillips | 57,000 | Spot |
| Enbridge | 9,600 | Spot |
| Fortis Energy | 17,500 | Spot |
| Louisville Gas & Electric | 229,210 | Spot* |
| Louis Dreyfus | 10,800 | Spot |
| Macquarie Cook | 125,226 | Spot |
| Marathon | 3,100 | Spot |
| National Energy & Trade | 192,700 | Spot |
| NJR Energy Service | 308,235 | Spot |
| Oneok Energy | 111,688 | Spot |
| Petrocom Ventures | 12,000 | Spot |
| Proliance Energy | 32,800 | Spot |
| Sequent Energy | 135,381 | Spot |
| Shell Energy | 94,218 | Spot |
| Tenaska Mktg | 130,443 | Spot |
| Tennessee Gas Pipeline | 263 | Imbalance |
| Total Gas & Power | 48,592 | Spot |
| Tennessee Valley Authority | 20,000 | Spot |
| United Energy | 15,000 | Spot |
| <hr/> | | |
| Total | 1,909,217 | |

* - Local Distribution Company service, with no volume purchase commitments.

LOUISVILLE GAS AND ELECTRIC COMPANY

**Response to Information Requested in Appendix of
Commission's Order Dated January 27, 2010**

Case No. 2009-00508

Question No. 3

Witness: Robert M. Conroy

Q-3. State whether LG&E engages in hedging activities for its natural gas purchases used for generation. If yes, describe the hedging activities in detail.

A-3. No.

LOUISVILLE GAS AND ELECTRIC COMPANY

**Response to Information Requested in Appendix of
Commission's Order Dated January 27, 2010**

Case No. 2009-00508

Question No. 4

Witness: Mike Dotson / Charles R. Schram

Q-4. For each generating station or unit for which a separate coal pile is maintained, state, for the period from May 1, 2009 through October 31, 2009, the actual amount of coal burned in tons, the actual amount of coal deliveries in tons, the total kWh generated, and the actual capacity factor at which the plant operated.

A-4. For May 1, 2009 to October 31, 2009

The North American Electric Reliability Council Generation Availability Data System defines Capacity Factor as the value equal to the net MWh produced divided by the product of the hours in the period times the unit rating.

| Plant | Coal Burn (Tons) | Coal Receipts (Tons) | Net MWh | Capacity Factor (Net MWh)/(period hrs x MW rating) |
|------------------|---------------------|-------------------------|-----------|--|
| Cane Run 4-6 | 787,553 | 807,310 | 1,617,498 | 65.1% |
| Mill Creek 1-4 | 2,442,620 | 2,558,728 | 5,390,498 | 82.9% |
| Trimble County 1 | 722,549 | 848,651 | 1,592,294 | 70.6% |

Note: Trimble County 2 coal pile is being purchased for preliminary testing of the unit prior to its contracted in-service date of June 2010. 26,400 tons of coal were received.

LOUISVILLE GAS AND ELECTRIC COMPANY

**Response to Information Requested in Appendix of
Commission's Order Dated January 27, 2010**

Case No. 2009-00508

Question No. 5

Witness: Charles R. Schram

Q-5. List all firm power commitments for LG&E from May 1, 2009 through October 31, 2009 for (a) purchases and (b) sales. This list shall identify the electric utility, the amount of commitment in MW, and the purpose of the commitment (e.g., peaking, emergency).

A-5. a. Firm Purchases

The firm purchases from Ohio Valley Electric Corporation (OVEC) for the review period are shown in the table below. LG&E purchased its participation ratio (5.63%) of the OVEC released capacity for the months in question:

| <u>Utility</u> | <u>Companies' LG&E Portion</u> | | <u>Purpose</u> |
|-----------------|------------------------------------|-------------|----------------|
| | <u>Amt (MW)</u> | <u>(MW)</u> | |
| OVEC (May 2009) | ~ 131 | ~ 91 | Baseload |
| OVEC (Jun 2009) | ~ 150 | ~ 104 | Baseload |
| OVEC (Jul 2009) | ~ 156 | ~ 108 | Baseload |
| OVEC (Aug 2009) | ~ 157 | ~ 109 | Baseload |
| OVEC (Sep 2009) | ~ 136 | ~ 94 | Baseload |
| OVEC (Oct 2009) | ~ 143 | ~ 99 | Baseload |

b. Sales

None.

LOUISVILLE GAS AND ELECTRIC COMPANY

**Response to Information Requested in Appendix of
Commission's Order Dated January 27, 2010**

Case No. 2009-00508

Question No. 6

Witness: Robert M. Conroy

Q-6. Provide a monthly billing summary for sales to all electric utilities for the period May 1, 2009 through October 31, 2009.

A-6. Please see the attached sheets.

Louisville Gas and Electric Company

POWER TRANSACTION SCHEDULE

Month Ended: May 31, 2009

| Company | Type of Transaction | KWH | Billing Components | | | Total Charges(\$) |
|--|---------------------|---------|--------------------|--------------------|----------------------|----------------------|
| | | | Demand(\$) | Fuel Charges(\$) | Other Charges(\$) | |
| <u>Sales</u> | | | | | | |
| MIDWEST INDEPENDENT TRANSMISSION SYSTEM OPERATOR, INC. | MISO | Economy | | 290,468.64 | 87,177.70 | 377,646.34 |
| MIDWEST CONTINGENCY RESERVE SHARING GROUP | MCRS | Economy | | 133,289.73 | 40,003.94 | 173,293.67 |
| PJM INTERCONNECTION ASSOCIATION | PJM | Economy | | 2,101,653.65 | 630,764.52 | 2,732,418.17 |
| AMERICAN ELECTRIC POWER SERVICE CORP. | AEP | Economy | | 65,193.38 | 19,566.34 | 84,759.72 |
| CARGILL- ALLIANT, LLC | CARG | Economy | | 123,142.88 | 36,958.60 | 160,101.48 |
| COBB ELECTRIC MEMBERSHIP CORPORATION | COBB | Economy | | 4,562,000 | 9,988.40 | 43,268.90 |
| DUKE ENERGY CAROLINAS, LLC | DECA | Economy | | 1,232,000 | 48,681.31 | 63,291.92 |
| ENDURE ENERGY | ENDU | Economy | | 2,089,000 | 15,050.37 | 19,567.40 |
| FORTIS ENERGY MARKETING & TRADING GP | FORT | Economy | | 577,000 | 4,517.03 | 14,284.60 |
| ILLINOIS MUNICIPAL ELECTRIC AGENCY | IMEA | Economy | | 373,000 | 10,987.08 | 14,284.60 |
| INDIANA MUNICIPAL POWER AGENCY | IMPA | Economy | | 2,465,000 | 75,615.03 | 98,309.20 |
| PROGRESS ENERGIES CAROLINAS INC. | PROC | Economy | | 2,420,000 | 74,093.75 | 96,331.34 |
| THE ENERGY AUTHORITY | TEA | Economy | | 2,337,000 | 69,119.41 | 89,864.07 |
| TENNESSEE VALLEY AUTHORITY | TVA | Economy | | 6,766,000 | 186,067.56 | 241,911.59 |
| AMEREN ENERGY, INC. | AMRN | Economy | | 2,487,000 | 72,286.48 | 93,981.65 |
| WESTAR ENERGY, INC. | WSTR | Economy | | 99,000 | 2,890.97 | 3,758.62 |
| KENTUCKY UTILITIES COMPANY | KU | Economy | | 1,069,000 | 31,571.74 | 41,047.30 |
| SUBTOTAL | | | | <u>473,806,000</u> | <u>10,201,376.68</u> | <u>10,201,376.68</u> |
| TOTAL | | | | <u>595,041,000</u> | <u>13,534,769.16</u> | <u>14,535,212.65</u> |

Louisville Gas and Electric Company

POWER TRANSACTION SCHEDULE

Month Ended: June 30, 2009

| Company | Type of Transaction | KWH | Billing Components | | | Total Charges(\$) |
|--|---------------------|---------|--------------------|------------------|-------------------|-------------------|
| | | | Demand(\$) | Fuel Charges(\$) | Other Charges(\$) | |
| Sales | | | | | | |
| MIDWEST INDEPENDENT TRANSMISSION SYSTEM OPERATOR, INC. | MISO | Economy | 1,072,000 | 19,811.71 | 12,574.69 | 32,386.40 |
| MIDWEST CONTINGENCY RESERVE SHARING GROUP | MCRS | Economy | 5,299,000 | 332,879.54 | 211,281.90 | 544,161.44 |
| PJM INTERCONNECTION ASSOCIATION | PJM | Economy | 8,113,000 | 165,440.31 | 105,006.59 | 270,446.90 |
| AMERICAN ELECTRIC POWER SERVICE CORP. | AEP | Economy | 49,000 | 1,135.73 | 720.86 | 1,856.59 |
| AMEREN ENERGY MARKETING COMPANY | AMEM | Economy | 39,000 | 903.50 | 573.45 | 1,476.95 |
| CARGILL- ALLIANT, LLC | CARG | Economy | 343,000 | 7,597.77 | 4,822.37 | 12,420.14 |
| ENDURE ENERGY | ENDU | Economy | 49,000 | 925.04 | 587.13 | 1,512.17 |
| ILLINOIS MUNICIPAL ELECTRIC AGENCY | IMEA | Economy | 1,252,000 | 34,505.46 | 21,900.95 | 56,406.41 |
| INDIANA MUNICIPAL POWER AGENCY | IMPA | Economy | 1,231,000 | 33,987.65 | 21,572.30 | 55,559.95 |
| SEMPRA ENERGY TRADING CORP. | SEMP | Economy | 148,000 | 4,606.46 | 2,923.77 | 7,530.23 |
| THE ENERGY AUTHORITY | TEA | Economy | 2,224,000 | 48,159.48 | 30,567.29 | 78,726.77 |
| TENNESSEE VALLEY AUTHORITY | TVA | Economy | 1,889,000 | 56,896.01 | 36,112.44 | 93,008.45 |
| AMEREN ENERGY, INC. | AMRN | Economy | 98,000 | 2,271.46 | 1,441.71 | 3,713.17 |
| WESTAR ENERGY, INC. | WSTR | Economy | 98,000 | 2,331.64 | 1,479.94 | 3,811.58 |
| MISCELLANEOUS | | | - | 43.46 | (43.46) | - |
| KENTUCKY UTILITIES COMPANY | KU | Economy | 341,916,000 | 6,754,565.99 | - | 6,754,565.99 |
| SUBTOTAL | | | 363,820,000 | - | 7,466,061.21 | 7,917,583.14 |
| TOTAL | | | 363,820,000 | - | 7,466,061.21 | 7,917,583.14 |

Louisville Gas and Electric Company

POWER TRANSACTION SCHEDULE

Month Ended: July 31, 2009

| Company | Type of Transaction | KWH | Billing Components | | | Total Charges(\$) |
|--|---------------------|---------|--------------------|------------------|-------------------|-------------------|
| | | | Demand(\$) | Fuel Charges(\$) | Other Charges(\$) | |
| <u>Sales</u> | | | | | | |
| MIDWEST INDEPENDENT TRANSMISSION SYSTEM OPERATOR, INC. | MISO | Economy | | 1,103.24 | 651.26 | 1,754.50 |
| MIDWEST CONTINGENCY RESERVE SHARING GROUP | MCRS | Economy | | 62,180.72 | 36,706.44 | 98,887.16 |
| PJM INTERCONNECTION ASSOCIATION | PJM | Economy | | 15,238.78 | 8,995.73 | 24,234.51 |
| AMERICAN ELECTRIC POWER SERVICE CORP. | AEP | Economy | | 3,961.47 | 2,338.53 | 6,300.00 |
| CARGILL- ALLIANT, LLC | CARG | Economy | | 7,954.38 | 4,695.62 | 12,650.00 |
| FORTIS ENERGY MARKETING & TRADING GP | FORT | Economy | | 2,263.70 | 1,336.30 | 3,600.00 |
| ILLINOIS MUNICIPAL ELECTRIC AGENCY | IMEA | Economy | | 17,866.47 | 10,546.92 | 28,413.39 |
| INDIANA MUNICIPAL POWER AGENCY | IMPA | Economy | | 20,748.21 | 12,248.05 | 32,996.26 |
| PROGRESS ENERGIES CAROLINAS INC. | PROC | Economy | | 16,977.73 | 10,022.27 | 27,000.00 |
| THE ENERGY AUTHORITY | TEA | Economy | | 22,174.17 | 13,089.83 | 35,264.00 |
| TENASKA POWER SERVICES CO. | TPS | Economy | | 2,784.98 | 1,644.02 | 4,429.00 |
| TENNESSEE VALLEY AUTHORITY | TVA | Economy | | 8,708.93 | 5,141.07 | 13,850.00 |
| WESTAR ENERGY, INC. | WSTR | Economy | | 2,200.81 | 1,299.19 | 3,500.00 |
| KENTUCKY UTILITIES COMPANY | KU | Economy | | 399,897.00 | 7,405,321.63 | 7,405,729.73 |
| SUBTOTAL | | | | 405,675.00 | - | 7,589,485.22 |
| TOTAL | | | | 405,675.00 | - | 7,589,485.22 |
| | | | | | | 109,123.33 |
| | | | | | | 7,698,608.55 |

Louisville Gas and Electric Company

POWER TRANSACTION SCHEDULE

Month Ended: August 31, 2009

| Company | Type of Transaction | KWH | Billing Components | | | Total Charges(\$) |
|--|---------------------|---------|--------------------|------------------|-------------------|-------------------|
| | | | Demand(\$) | Fuel Charges(\$) | Other Charges(\$) | |
| <u>Sales</u> | | | | | | |
| MIDWEST INDEPENDENT TRANSMISSION SYSTEM OPERATOR, INC. | MISO | Economy | | \$ 2,170.19 | \$ 546.52 | \$ 2,716.71 |
| MIDWEST CONTINGENCY RESERVE SHARING GROUP | MCRS | Economy | | \$ 27,296.61 | \$ 6,874.18 | \$ 34,170.79 |
| PJM INTERCONNECTION ASSOCIATION | PJM | Economy | | \$ 8,482.76 | \$ 2,136.23 | \$ 10,618.99 |
| AMERICAN ELECTRIC POWER SERVICE CORP. | AEP | Economy | | \$ 2,216.56 | \$ 558.20 | \$ 2,774.76 |
| CARGILL- ALLIANT, LLC | CARG | Economy | | \$ 14,056.18 | \$ 3,539.80 | \$ 17,595.98 |
| COBB ELECTRIC MEMBERSHIP CORPORATION | COBB | Economy | | \$ 1,605.34 | \$ 404.28 | \$ 2,009.62 |
| ILLINOIS MUNICIPAL ELECTRIC AGENCY | IMEA | Economy | | \$ 156,843.48 | \$ 39,498.31 | \$ 196,341.79 |
| INDIANA MUNICIPAL POWER AGENCY | IMPA | Economy | | \$ 154,923.04 | \$ 39,014.68 | \$ 193,937.72 |
| THE ENERGY AUTHORITY | TEA | Economy | | \$ 16,709.87 | \$ 4,208.09 | \$ 20,917.96 |
| TENNESSEE VALLEY AUTHORITY | TVA | Economy | | \$ 9,709.81 | \$ 2,445.25 | \$ 12,155.06 |
| AMEREN ENERGY, INC. | AMRN | Economy | | \$ 3,849.62 | \$ 969.47 | \$ 4,819.09 |
| MISCELLANEOUS | | | | \$ (503.14) | \$ 503.14 | \$ - |
| KENTUCKY UTILITIES COMPANY | KU | Economy | | \$ 334,184.000 | \$ - | \$ 334,184.000 |
| SUBTOTAL | | | | \$ 344,964,000 | \$ - | \$ 344,964,000 |
| TOTAL | | | | \$ 344,964,000 | \$ - | \$ 344,964,000 |

Louisville Gas and Electric Company

POWER TRANSACTION SCHEDULE

Month Ended: September 30, 2009

| Company | Type of Transaction | KWH | Billing Components | | | Total Charges(\$) |
|--|---------------------|---------|--------------------|------------------|-------------------|-------------------|
| | | | Demand(\$) | Fuel Charges(\$) | Other Charges(\$) | |
| <u>Sales</u> | | | | | | |
| MIDWEST INDEPENDENT TRANSMISSION SYSTEM OPERATOR, INC. | MISO | Economy | | \$ 4,552.13 | \$ 2,009.08 | \$ 6,561.21 |
| MIDWEST CONTINGENCY RESERVE SHARING GROUP | MCRS | Economy | | \$ 89,971.26 | \$ 39,708.68 | \$ 129,679.94 |
| PJM INTERCONNECTION ASSOCIATION | PJM | Economy | | \$ 48,213.77 | \$ 21,279.07 | \$ 69,492.84 |
| AMERICAN ELECTRIC POWER SERVICE CORP. | AEP | Economy | | \$ 11,516.99 | \$ 5,083.01 | \$ 16,600.00 |
| CARGILL- ALLIANT, LLC | CARG | Economy | | \$ 7,614.40 | \$ 3,360.60 | \$ 10,975.00 |
| ENDURE ENERGY | ENDU | Economy | | \$ 14,535.00 | \$ 6,415.00 | \$ 20,950.00 |
| FORTIS ENERGY MARKETING & TRADING GP | FORT | Economy | | \$ 11,794.51 | \$ 5,205.49 | \$ 17,000.00 |
| ILLINOIS MUNICIPAL ELECTRIC AGENCY | IMEA | Economy | | \$ 27,366.78 | \$ 12,078.29 | \$ 39,445.07 |
| INDIANA MUNICIPAL POWER AGENCY | IMPA | Economy | | \$ 5,785.82 | \$ 2,553.56 | \$ 8,339.38 |
| PROGRESS ENERGIES CAROLINAS INC. | PROC | Economy | | \$ 37,222.08 | \$ 16,427.92 | \$ 53,650.00 |
| THE ENERGY AUTHORITY | TEA | Economy | | \$ 5,852.86 | \$ 2,583.14 | \$ 8,436.00 |
| TENNESSEE VALLEY AUTHORITY | TVA | Economy | | \$ 65,789.08 | \$ 29,035.92 | \$ 94,825.00 |
| KENTUCKY UTILITIES COMPANY | KU | Economy | | \$ 7,522,163.40 | \$ - | \$ 7,522,163.40 |
| SUBTOTAL | | | | \$ - | \$ 7,852,378.08 | \$ 7,998,117.84 |
| TOTAL | | | | \$ - | \$ 7,852,378.08 | \$ 7,998,117.84 |

Louisville Gas and Electric Company

POWER TRANSACTION SCHEDULE

Month Ended: October 31, 2009

| Company | Type of PO | KWH | Billing Components | | | |
|--|---------------|---------|--------------------|---------------------|----------------------|----------------------|
| | | | Demand(\$) | Fuel Charges(\$) | Other Charges(\$) | Total Charges(\$) |
| <u>Sales</u> | | | | | | |
| MIDWEST INDEPENDENT TRANSMISSION SYSTEM OPERATOR, INC. | MISO | Economy | | \$ 100,363.63 | \$ 31,343.04 | \$ 131,706.67 |
| MIDWEST CONTINGENCY RESERVE SHARING GROUP | MCRS | Economy | | \$ 17,373.30 | \$ 5,425.60 | \$ 22,798.90 |
| PJM INTERCONNECTION ASSOCIATION | PJM | Economy | | \$ 874,278.92 | \$ 273,032.74 | \$ 1,147,311.66 |
| ASSOCIATED ELECT COOPERATIVE | AECI | Economy | | \$ 31,115.47 | \$ 9,717.20 | \$ 40,832.67 |
| AMERICAN ELECTRIC POWER SERVICE CORP. | AEP | Economy | | \$ 73,727.44 | \$ 23,024.69 | \$ 96,752.13 |
| CARGILL- ALLIANT, LLC | CARG | Economy | | \$ 122,322.34 | \$ 38,200.62 | \$ 160,522.96 |
| ENDURE ENERGY | ENDU | Economy | | \$ 70,728.43 | \$ 22,088.12 | \$ 92,816.55 |
| FORTIS ENERGY MARKETING & TRADING GP | FORT | Economy | | \$ 32,442.19 | \$ 10,131.52 | \$ 42,573.71 |
| ENERGY IMBALANCE | IMBL | Economy | | \$ 28.56 | \$ 8.92 | \$ 37.48 |
| MERRILL LYNCH COMMODITIES INC. | MLCM | Economy | | \$ 51,652.14 | \$ 16,130.69 | \$ 67,782.83 |
| THE ENERGY AUTHORITY | TEA | Economy | | \$ 184,373.30 | \$ 57,578.82 | \$ 241,952.12 |
| TENASKA POWER SERVICES CO. | TPS | Economy | | \$ 2,820.28 | \$ 880.76 | \$ 3,701.04 |
| TENNESSEE VALLEY AUTHORITY | TVA | Economy | | \$ 474,231.30 | \$ 148,099.96 | \$ 622,331.26 |
| AMEREN ENERGY, INC. | AMRN | Economy | | \$ 3,165.43 | \$ 988.56 | \$ 4,153.99 |
| KENTUCKY UTILITIES COMPANY | KU | Economy | | \$ 6,607,715.29 | \$ - | \$ 6,607,715.29 |
| SUBTOTAL | | | | \$ 8,646,338.02 | \$ 636,651.24 | \$ 9,282,989.26 |
| TOTAL | | | | \$ - | \$ 636,651.24 | \$ 9,282,989.26 |

LOUISVILLE GAS AND ELECTRIC COMPANY

**Response to Information Requested in Appendix of
Commission's Order Dated January 27, 2010**

Case No. 2009-00508

Question No. 7

Witness: Frederick D. Jackson

Q-7. List LG&E's scheduled, actual, and forced outages from May 1, 2009 through October 31, 2009.

A-7. Please see the attached sheets.

Louisville Gas & Electric Company
 Cane Run Unit #4 - Coal - 155 MW
 May 2009 through October 2009

Schedule vs Actual

| MONTH | MAINTENANCE | | | | HOURS OF DURATION | | | REASON FOR DEVIATION FROM SCHEDULED MAINTENANCE OR REASON FOR FORCED OUTAGE AS APPROPRIATE |
|-----------|---------------------------|-----------------|-----------------|-----------------|-------------------|--------|--------|--|
| | Scheduled | | Actual | | Scheduled | Forced | Actual | |
| | FROM | TO | FROM | TO | | | | |
| May | S | 5/11/2009 21:24 | 5/4/2009 2:37 | 5/1/2009 21:24 | 5/4/2009 2:37 | 53:13 | 53:13 | FGD expansion joint replacement. |
| | F | | | 5/13/2009 3:51 | 5/14/2009 0:04 | 20:13 | | Induced draft fan speed changer. |
| | S | 5/17/2009 1:50 | 5/17/2009 11:40 | 5/17/2009 1:50 | 5/17/2009 11:40 | 9:50 | 9:50 | Induced draft fan speed changer. |
| June | No outages > or = 6 hours | | | | | | | |
| July | No outages > or = 6 hours | | | | | | | |
| August | F | | | 8/4/2009 8:46 | 8/5/2009 11:44 | 26:58 | | Storm - breakers flooded. |
| | F | | | 8/17/2009 2:46 | 8/18/2009 5:26 | 26:40 | | Forced draft fan drive. |
| September | S | 9/1/2009 21:37 | 9/4/2009 7:54 | 9/1/2009 21:37 | 9/4/2009 7:54 | 58:17 | 58:17 | Exciter commutator and brushes. |
| | S | 9/11/2009 7:03 | 9/12/2009 12:46 | 9/11/2009 7:03 | 9/12/2009 12:46 | 29:43 | 29:43 | Waterwall slagging/fouling. |
| | F | | | 9/12/2009 22:18 | 9/13/2009 16:42 | 18:24 | | Feedwater chemistry. |
| | F | | | 9/13/2009 16:42 | 9/15/2009 4:20 | 35:38 | | Insulation damage. |
| October | No outages > or = 6 hours | | | | | | | |

Report dates of forced outage in columns headed Actual

Louisville Gas & Electric Company
 Cane Run Unit #5 - Coal - 168 MW
 May 2009 through October 2009

Schedule vs Actual

| MONTH | MAINTENANCE | | | | HOURS OF DURATION | | | REASON FOR DEVIATION FROM SCHEDULED MAINTENANCE OR REASON FOR FORCED OUTAGE AS APPROPRIATE |
|-----------|---------------------------|-----------------|-----------------|-----------------|-------------------|--------|--------|--|
| | Scheduled | | Actual | | Scheduled | Forced | Actual | |
| | FROM | TO | FROM | TO | | | | |
| May | S | 5/17/2009 15:00 | 5/14/2009 18:11 | | 399:00 | | 330:11 | Annual boiler outage. |
| June | No outages > or = 6 hours | | | | | | | |
| July | No outages > or = 6 hours | | | | | | | |
| August | F | | 8/4/2009 8:43 | 8/6/2009 8:45 | | | 48:02 | Storm - breakers flooded. |
| | F | | 8/10/2009 18:08 | 8/11/2009 6:16 | | | 12:08 | Data Control System (DCS). |
| | F | | 8/12/2009 15:13 | 8/13/2009 7:04 | | | 15:51 | Data Control System (DCS). |
| | F | | 8/23/2009 18:42 | 8/24/2009 1:16 | | | 6:34 | Bunker flow. |
| September | S | 9/9/2009 8:15 | 9/11/2009 2:47 | 9/9/2009 8:15 | 9/11/2009 2:47 | 42:32 | 42:32 | Boiler tube waterwall leak. |
| | F | | | 9/13/2009 16:39 | 9/15/2009 6:34 | | 37:55 | Water pump motor. |
| October | F | | | 10/5/2009 23:46 | 10/6/2009 7:51 | | 8:05 | Induced draft fan motors. |
| | S | 10/20/2009 0:00 | 10:20/09 8:00 | 10/20/2009 0:00 | 10:20/09 8:00 | 8:00 | 8:00 | Generator stator inspection. |

Report dates of forced outage in columns headed Actual

Schedule vs Actual

| MONTH | MAINTENANCE | | | | HOURS OF DURATION | | | REASON FOR DEVIATION FROM SCHEDULED MAINTENANCE OR REASON FOR FORCED OUTAGE AS APPROPRIATE |
|-----------|-------------|------------------|------------------|------------------|-------------------|--------|--------|--|
| | Scheduled | | Actual | | Scheduled | Forced | Actual | |
| | FROM | TO | FROM | TO | | | | |
| May | S | → | 5/1/2009 13:43 | → | 5/1/2009 13:43 | 13:43 | 13:43 | Boiler tube waterwall leak. |
| | F | | | 5/20/2009 10:36 | 5/24/2009 3:15 | 88:39 | | Second reheater tube leak. |
| June | F | | | 6/25/2009 6:57 | 6/25/2009 17:49 | 10:52 | | Exciter cooler leak. |
| | F | | | 6/27/2009 2:16 | 6/27/2009 18:23 | 16:07 | | Feedwater controls. |
| July | F | | | 7/8/2009 7:40 | 7/9/2009 7:58 | 24:18 | | Condenser loss of vacuum. |
| | F | | | 7/9/2009 22:53 | 7/10/2009 22:18 | 23:25 | | Condenser tube leak. |
| August | F | | | 8/4/2009 8:45 | 8/7/2009 4:17 | 67:32 | | Storm - breakers flooded. |
| | S | 8/14/2009 21:02 | 8/17/2009 6:02 | 8/14/2009 21:02 | 8/17/2009 6:02 | 57:00 | 57:00 | Induced draft fan repair. |
| September | F | | | 9/13/2009 16:42 | 9/16/2009 6:13 | 61:31 | | Circulating water pumps. |
| October | S | 10/22/2009 11:35 | 10/29/2009 17:19 | 10/22/2009 11:35 | 10/29/2009 17:19 | 173:44 | 173:44 | Turbine bearing repairs. |

Report dates of forced outage in columns headed Actual

Louisville Gas & Electric Company
 Mill Creek Unit #1 - Coal - 303 MW
 May 2009 through October 2009

| MONTH | MAINTENANCE | | | | HOURS OF DURATION | | | REASON FOR DEVIATION FROM SCHEDULED MAINTENANCE OR REASON FOR FORCED OUTAGE AS APPROPRIATE |
|-----------|---------------------------|----------------|------------------|-----------------|-------------------|--------|--------|--|
| | Scheduled | | Actual | | Scheduled | Forced | Actual | |
| | FROM | TO | FROM | TO | | | | |
| May | S | 5/17/2009 7:58 | 5/19/2009 22:54 | 5/17/2009 7:58 | 5/19/2009 22:54 | 62:56 | 62:56 | First reheater leak. |
| | F | | | 5/19/2009 22:54 | 5/20/2009 8:10 | | 9:16 | Turbine trip devices. |
| | F | | | 5/22/2009 13:26 | 5/24/2009 2:27 | | 37:01 | First reheater leak. |
| June | No outages > or = 6 hours | | | | | | | |
| July | F | | | 7/10/2009 16:44 | 7/11/2009 21:19 | | 28:35 | Second superheater leak. |
| | F | | | 7/22/2009 18:26 | 7/24/2009 22:24 | | 51:58 | Economizer leak. |
| August | F | | | 8/11/2009 5:05 | 8/12/2009 17:54 | | 36:49 | Second superheater leak. |
| September | No outages > or = 6 hours | | | | | | | |
| October | S | 10/3/2009 0:00 | 10/11/2009 15:00 | 10/2/2009 21:45 | 10/11/2009 14:21 | 207:00 | 208:36 | Minor boiler overhaul. |

Report dates of forced outage in columns headed Actual

Louisville Gas & Electric Company
 Mill Creek Unit #2 - Coal - 301 MW
 May 2009 through October 2009

Schedule vs Actual

| MONTH | MAINTENANCE | | | | HOURS OF DURATION | | | REASON FOR DEVIATION FROM SCHEDULED MAINTENANCE OR REASON FOR FORCED OUTAGE AS APPROPRIATE |
|-----------|-------------|-----------------|-----------------|------------------|-------------------|--------|--------|--|
| | Scheduled | | Actual | | Scheduled | Forced | Actual | |
| | FROM | TO | FROM | TO | | | | |
| May | F | | | 5/24/2009 5:29 | 5/25/2009 14:10 | | 32:41 | Attemperator valves. |
| June | F | | | 6/12/2009 12:07 | 6/14/2009 11:26 | | 47:19 | Boiler tube waterwall leak. |
| | F | | | 6/20/2009 9:00 | 6/21/2009 22:09 | | 37:09 | Second superheater leak. |
| July | F | | | 7/17/2009 8:33 | 7/17/2009 21:30 | | 12:57 | Condenser tube leak. |
| | S | 7/17/2009 21:30 | 7/18/2009 21:45 | 7/17/2009 21:30 | 7/18/2009 21:45 | 24:15 | 24:15 | FGD module leak. |
| August | F | | | 8/17/2009 0:35 | 8/17/2009 8:55 | | 8:20 | Generator lockout. |
| | S | 8/28/2009 21:44 | 8/31/2009 8:03 | 8/28/2009 21:44 | 8/31/2009 8:03 | 58:19 | 58:19 | Air heater. |
| | F | | | 8/31/2009 13:12 | —————> | | 10:48 | Main steam piping leak. |
| September | F | | | —————> | 9/1/2009 3:02 | | 3:02 | " " " " |
| October | F | | | 10/17/2009 15:37 | 10/19/2009 0:47 | | 33:10 | Economizer leak. |

Report dates of forced outage in columns headed Actual

Louisville Gas & Electric Company
 Mill Creek Unit #3 - Coal - 391 MW
 May 2009 through October 2009

Schedule vs Actual

| MONTH | MAINTENANCE | | | | HOURS OF DURATION | | | REASON FOR DEVIATION FROM SCHEDULED MAINTENANCE OR REASON FOR FORCED OUTAGE AS APPROPRIATE |
|-----------|---------------------------|-----------------|-----------------|-----------------|-------------------|--------|--------|--|
| | Scheduled | | Actual | | Scheduled | Forced | Actual | |
| | FROM | TO | FROM | TO | | | | |
| May | No outages > or = 6 hours | | | | | | | |
| June | F | | 6/15/2009 9:09 | 6/17/2009 8:40 | 47:31 | | | First reheater leak. |
| | F | | 6/17/2009 8:40 | 6/18/2009 3:43 | 19:03 | | | Unit auxiliaries transformer. |
| | F | | 6/22/2009 22:51 | 6/24/2009 12:09 | 37:18 | | | First superheater leak. |
| July | F | | 7/7/2009 23:28 | 7/10/2009 6:03 | 54:35 | | | First reheater leak. |
| | S | 7/17/2009 22:45 | 7/20/2009 1:09 | 7/17/2009 22:45 | 7/20/2009 1:09 | 50:24 | 50:24 | Reheater and economizer repairs. |
| | F | | 7/25/2009 14:09 | 7/27/2009 8:00 | 41:51 | | | First reheater leak. |
| August | No outages > or = 6 hours | | | | | | | |
| September | No outages > or = 6 hours | | | | | | | |
| October | F | | 10/7/2009 8:49 | 10/9/2009 6:37 | 45:48 | | | First reheater leak. |

Report dates of forced outage in columns headed Actual

Louisville Gas & Electric Company
 Mill Creek Unit #4 - Coal - 477 MW
 May 2009 through October 2009

Schedule vs Actual

| MONTH | MAINTENANCE | | | | HOURS OF DURATION | | | REASON FOR DEVIATION FROM SCHEDULED MAINTENANCE OR REASON FOR FORCED OUTAGE AS APPROPRIATE |
|-----------|---------------------------|------------------|-----------------|------------------|-------------------|--------|--------|--|
| | Scheduled | | Actual | | Scheduled | Forced | Actual | |
| | FROM | TO | FROM | TO | | | | |
| May | S | 5/1/2009 23:31 | 5/4/2009 1:31 | 5/1/2009 23:31 | 5/4/2009 1:31 | 50:00 | 50:00 | Service water valve. |
| June | No outages > or = 6 hours | | | | | | | |
| July | F | | | 7/23/2009 0:52 | 7/25/2009 1:51 | | 48:59 | Condenser tube leak. |
| August | F | | | 8/21/2009 13:10 | 8/23/2009 1:21 | | 36:11 | Voltage insulator. |
| September | S | 9/25/2009 21:43 | 9/29/2009 7:12 | 9/25/2009 21:43 | 9/29/2009 7:12 | 81:29 | 81:29 | Air heater fouling. |
| October | S | 10/23/2009 22:37 | 10/25/2009 2:29 | 10/23/2009 22:37 | 10/25/2009 2:29 | 27:52 | 27:52 | FGD piping. |

Report dates of forced outage in columns headed Actual

Louisville Gas & Electric Company
 Trimble County Unit #1 - Coal - 383 MW (75% ownership share of 511 MW)
 May 2009 through October 2009

Schedule vs Actual

| MONTH | MAINTENANCE | | | | HOURS OF DURATION | | | REASON FOR DEVIATION FROM SCHEDULED MAINTENANCE OR REASON FOR FORCED OUTAGE AS APPROPRIATE |
|-----------|-------------|----------------|----------------|-----------------|-------------------|--------|--------|--|
| | Scheduled | | Actual | | Scheduled | Forced | Actual | |
| | FROM | TO | FROM | TO | | | | |
| May | S | → | 5/2/2009 22:09 | → | 5/2/2009 22:09 | 46:09 | 46:09 | First reheater leak. |
| | F | | | 5/29/2009 23:19 | 5/31/2009 9:31 | 34:12 | | Platen superheater leak. |
| June | F | | | 6/3/2009 1:03 | 6/3/2009 16:23 | 15:20 | | Induced draft fan controls. |
| July | S | 7/11/2009 0:42 | 7/13/2009 0:00 | 7/11/2009 0:42 | 7/13/2009 0:00 | 47:18 | 47:18 | Boiler tube leak. |
| | F | | | 7/13/2009 0:00 | 7/13/2009 9:23 | 9:23 | | Induced draft fan drives. |
| August | F | | | 8/11/2009 19:02 | 8/12/2009 20:47 | 25:45 | | Boiler tube slag fall damage. |
| | F | | | 8/12/2009 20:47 | 8/13/2009 3:22 | 6:35 | | Induced draft fan motors and drives. |
| | F | | | 8/13/2009 3:22 | 8/13/2009 20:34 | 17:12 | | Second superheater leak. |
| | F | | | 8/26/2009 12:36 | 8/28/2009 2:00 | 37:24 | | Boiler tube waterwall leak. |
| September | F | | | 9/8/2009 7:12 | 9/9/2009 6:54 | 23:42 | | Boiler tube waterwall leak. |
| | S | 9/26/2009 0:00 | → | 9/25/2009 22:25 | → | 120:00 | 121:35 | Major turbine overhaul. |
| October | S | → | → | → | → | 744:00 | 744:00 | " " " |

Report dates of forced outage in columns headed Actual

Louisville Gas & Electric Company
 Cane Run Unit #11 - Gas CT - 14 MW
 May 2009 through October 2009

Schedule vs Actual

| MONTH | MAINTENANCE | | | | HOURS OF DURATION | | | REASON FOR DEVIATION FROM SCHEDULED MAINTENANCE OR REASON FOR FORCED OUTAGE AS APPROPRIATE |
|-----------|------------------------------|----------------|-----------------|-----------------|-------------------|--------|---|--|
| | Scheduled | | Actual | | Scheduled | Forced | Actual | |
| | FROM | TO | FROM | TO | | | | |
| May | N: No outages > or = 6 hours | | | | | | | |
| June | F | | 6/20/2009 20:40 | 6/21/2009 8:30 | 11:50 | | Computer startup processor. | |
| | F | | 6/21/2009 16:30 | 6/22/2009 13:42 | 21:12 | | Computer startup processor. | |
| | F | | 6/22/2009 14:40 | 6/24/2009 11:25 | 44:45 | | Computer startup processor. | |
| July | S | 7/22/2009 6:00 | 7/23/2009 12:45 | 7/22/2009 6:00 | 7/23/2009 12:45 | 30:45 | 30:45 | Breaker maintenance. |
| August | F | | 8/5/2009 2:00 | 8/5/2009 8:13 | 6:13 | | Powerhouse heating and ventilating systems. | |
| September | No outages > or = 6 hours | | | | | | | |
| October | No outages > or = 6 hours | | | | | | | |

Report dates of forced outage in columns headed Actual

Louisville Gas & Electric Company
 Paddys Run Unit #11 - Gas CT - 12 MW
 May 2009 through October 2009

Schedule vs Actual

| MONTH | MAINTENANCE | | | | HOURS OF DURATION | | | REASON FOR DEVIATION FROM SCHEDULED MAINTENANCE OR REASON FOR FORCED OUTAGE AS APPROPRIATE |
|-----------|---------------------------|----|-----------------|-----------------|-------------------|--------|--------|--|
| | Scheduled | | Actual | | Scheduled | Forced | Actual | |
| | FROM | TO | FROM | TO | | | | |
| May | No outages > or = 6 hours | | | | | | | |
| June | F | | 6/1/2009 9:00 | 6/2/2009 10:00 | 25:00 | | | Battery and charger system. |
| July | No outages > or = 6 hours | | | | | | | |
| August | No outages > or = 6 hours | | | | | | | |
| September | F | | 9/14/2009 16:16 | 9/15/2009 10:00 | 17:44 | | | Reporting issue. |
| October | No outages > or = 6 hours | | | | | | | |

Report dates of forced outage in columns headed Actual

Louisville Gas & Electric Company
 Paddys Run Unit #12 - Gas CT - 23 MW
 May 2009 through October 2009

Schedule vs Actual

| MONTH | MAINTENANCE | | | | HOURS OF DURATION | | | REASON FOR DEVIATION FROM SCHEDULED MAINTENANCE OR REASON FOR FORCED OUTAGE AS APPROPRIATE | |
|-----------|---------------------------|----------------|-----------------|-----------------|-------------------|--------|--------|--|----------------------------|
| | Scheduled | | Actual | | Scheduled | Forced | Actual | | |
| | FROM | TO | FROM | TO | | | | | |
| May | S | 5/14/2009 7:36 | 5/14/2009 14:14 | 5/14/2009 7:36 | 5/14/2009 14:14 | 6:38 | | 6:38 | Replaced air dryer. |
| June | No outages > or = 6 hours | | | | | | | | |
| July | S | 7/27/2009 8:32 | 7/27/2009 18:10 | 7/27/2009 8:32 | 7/27/2009 18:10 | 9:38 | | 9:38 | Breaker maintenance. |
| August | No outages > or = 6 hours | | | | | | | | |
| September | F | | | 9/14/2009 16:16 | 9/15/2009 12:59 | | | 20:43 | Cooling water supply leak. |
| October | No outages > or = 6 hours | | | | | | | | |

Report dates of forced outage in columns headed Actual

Louisville Gas & Electric Company
 Paddys Run Unit # 13 - Gas CT - 158 MW
 May 2009 through October 2009

Schedule vs Actual

| MONTH | MAINTENANCE | | | | HOURS OF DURATION | | | REASON FOR DEVIATION FROM SCHEDULED MAINTENANCE OR REASON FOR FORCED OUTAGE AS APPROPRIATE |
|-----------|---------------------------|----------------|------------------|------------------|-------------------|--------|--------|--|
| | Scheduled | | Actual | | Scheduled | Forced | Actual | |
| | FROM | TO | FROM | TO | | | | |
| May | No outages > or = 6 hours | | | | | | | |
| June | F | | 6/24/2009 1:00 | 6/26/2009 19:30 | 66:30 | | | Fire protection system instrumentation and controls. |
| | S | 6/30/2009 6:21 | 6/30/2009 12:30 | 6/30/2009 6:21 | 6/30/2009 12:30 | 6:09 | 6:09 | Switchyard circuit breakers. |
| July | No outages > or = 6 hours | | | | | | | |
| August | F | | 8/4/2009 8:42 | 8/5/2009 12:30 | 27:48 | | | Cooling water system. |
| September | F | | 9/17/2009 7:16 | 9/17/2009 13:53 | 6:37 | | | Fuel piping and valves. |
| | F | | 9/21/2009 14:23 | 9/25/2009 9:54 | 91:31 | | | Voltage spike. |
| October | F | | 10/28/2009 14:30 | 10/29/2009 13:45 | 23:15 | | | Fire extinguishing system. |

Report dates of forced outage in columns headed Actual

Louisville Gas & Electric Company
 Trimble County Unit #5 - Gas CT - 160 MW
 May 2009 through October 2009

Schedule vs Actual

| MONTH | MAINTENANCE | | | | HOURS OF DURATION | | | REASON FOR DEVIATION FROM SCHEDULED MAINTENANCE OR REASON FOR FORCED OUTAGE AS APPROPRIATE |
|-----------|---------------------------|----------------|-----------------|----------------|-------------------|--------|--------|--|
| | Scheduled | | Actual | | Scheduled | Forced | Actual | |
| | FROM | TO | FROM | TO | | | | |
| May | S | 5/22/2009 3:15 | 5/22/2009 16:28 | 5/22/2009 3:15 | 5/22/2009 16:28 | 13:13 | 13:13 | Conductors and buses. |
| June | No outages > or = 6 hours | | | | | | | |
| July | No outages > or = 6 hours | | | | | | | |
| August | S | 8/5/2009 7:00 | 8/5/2009 14:00 | 8/5/2009 7:00 | 8/5/2009 14:00 | 7:00 | 7:00 | Fuel piping and valves. |
| | S | 8/22/2009 2:30 | 8/22/2009 16:52 | 8/22/2009 2:30 | 8/22/2009 16:52 | 14:22 | 14:22 | Conductors and buses. |
| September | No outages > or = 6 hours | | | | | | | |
| October | S | 10/6/2009 3:30 | 10/6/2009 15:00 | 10/6/2009 3:30 | 10/6/2009 15:00 | 11:30 | 11:30 | Switchyard protection relay. |

Report dates of forced outage in columns headed Actual

Louisville Gas & Electric Company
 Trimble County Unit #6 - Gas CT - 160 MW
 May 2009 through October 2009

Schedule vs Actual

| MONTH | MAINTENANCE | | | | HOURS OF DURATION | | | REASON FOR DEVIATION FROM SCHEDULED MAINTENANCE OR REASON FOR FORCED OUTAGE AS APPROPRIATE |
|-----------|---------------------------|----------------|-----------------|----------------|-------------------|--------|--------|--|
| | Scheduled | | Actual | | Scheduled | Forced | Actual | |
| | FROM | TO | FROM | TO | | | | |
| May | S | 5/22/2009 3:15 | 5/22/2009 16:28 | 5/22/2009 3:15 | 5/22/2009 16:28 | 13:13 | 13:13 | Conductors and buses. |
| | S | 5/28/2009 6:15 | 5/28/2009 15:11 | 5/28/2009 6:15 | 5/28/2009 15:11 | 8:56 | 8:56 | Gas turbine washing. |
| June | No outages > or = 6 hours | | | | | | | |
| July | No outages > or = 6 hours | | | | | | | |
| August | S | 8/5/2009 7:00 | 8/5/2009 14:00 | 8/5/2009 7:00 | 8/5/2009 14:00 | 7:00 | 7:00 | Fuel piping and valves. |
| | S | 8/22/2009 2:30 | 8/22/2009 16:52 | 8/22/2009 2:30 | 8/22/2009 16:52 | 14:22 | 14:22 | Conductors and buses. |
| September | No outages > or = 6 hours | | | | | | | |
| October | No outages > or = 6 hours | | | | | | | |

Report dates of forced outage in columns headed Actual

Louisville Gas & Electric Company
 Trimble County Unit #7 - Gas CT - 160 MW
 May 2009 through October 2009

Schedule vs Actual

| MONTH | MAINTENANCE | | | | HOURS OF DURATION | | | REASON FOR DEVIATION FROM SCHEDULED MAINTENANCE OR REASON FOR FORCED OUTAGE AS APPROPRIATE |
|-----------|---------------------------|----------------|-----------------|-----------------|-------------------|--------|--------|--|
| | Scheduled | | Actual | | Scheduled | Forced | Actual | |
| | FROM | TO | FROM | TO | | | | |
| May | S | 5/22/2009 3:15 | 5/22/2009 16:28 | 5/22/2009 3:15 | 5/22/2009 16:28 | 13:13 | 13:13 | Conductors and buses. |
| June | No outages > or = 6 hours | | | | | | | |
| July | S | 7/2/2009 6:20 | 7/2/2009 13:40 | 7/2/2009 6:20 | 7/2/2009 13:40 | 7:20 | 7:20 | Gas turbine washing. |
| August | S | 8/5/2009 7:00 | 8/5/2009 14:00 | 8/5/2009 7:00 | 8/5/2009 14:00 | 7:00 | 7:00 | Fuel piping and valves. |
| | F | | | 8/21/2009 10:30 | 8/22/2009 16:52 | | 30:22 | Conductors and buses. |
| September | No outages > or = 6 hours | | | | | | | |
| October | No outages > or = 6 hours | | | | | | | |

Report dates of forced outage in columns headed Actual

Louisville Gas & Electric Company
 Trimble County Unit #8 - Gas CT - 160 MW
 May 2009 through October 2009

Schedule vs Actual

| MONTH | MAINTENANCE | | | | HOURS OF DURATION | | | REASON FOR DEVIATION FROM SCHEDULED MAINTENANCE OR REASON FOR FORCED OUTAGE AS APPROPRIATE |
|-----------|---------------------------|----------------|-----------------|----------------|-------------------|--------|--------|--|
| | Scheduled | | Actual | | Scheduled | Forced | Actual | |
| | FROM | TO | FROM | TO | | | | |
| May | S | 5/29/2009 4:00 | 5/29/2009 19:50 | 5/29/2009 4:00 | 5/29/2009 19:50 | 15:50 | 15:50 | Boroscope inspection. |
| June | No outages > or = 6 hours | | | | | | | |
| July | S | 7/27/2009 6:30 | 7/27/2009 15:34 | 7/27/2009 6:30 | 7/27/2009 15:34 | 9:04 | 9:04 | Gas turbine washing. |
| August | S | 8/6/2009 7:00 | 8/6/2009 14:00 | 8/6/2009 7:00 | 8/6/2009 14:00 | 7:00 | 7:00 | Fuel piping and valves. |
| September | No outages > or = 6 hours | | | | | | | |
| October | No outages > or = 6 hours | | | | | | | |

Report dates of forced outage in columns headed Actual

Louisville Gas & Electric Company
 Trimble County Unit #9 - Gas CT - 160 MW
 May 2009 through October 2009

Schedule vs Actual

| MONTH | MAINTENANCE | | | | HOURS OF DURATION | | | REASON FOR DEVIATION FROM SCHEDULED MAINTENANCE OR REASON FOR FORCED OUTAGE AS APPROPRIATE |
|-----------|---------------------------|----------------|-----------------|----------------|-------------------|--------|--------|--|
| | Scheduled | | Actual | | Scheduled | Forced | Actual | |
| | FROM | TO | FROM | TO | | | | |
| May | S | 5/29/2009 4:00 | 5/29/2009 18:11 | 5/29/2009 4:00 | 5/29/2009 18:11 | 14:11 | 14:11 | Conductors and buses. |
| June | No outages > or = 6 hours | | | | | | | |
| July | No outages > or = 6 hours | | | | | | | |
| August | No outages > or = 6 hours | | | | | | | |
| September | No outages > or = 6 hours | | | | | | | |
| October | No outages > or = 6 hours | | | | | | | |

Report dates of forced outage in columns headed Actual

Louisville Gas & Electric Company
 Trimble County Unit #10 - Gas CT - 160 MW
 May 2009 through October 2009

Schedule vs Actual

| MONTH | MAINTENANCE | | | | HOURS OF DURATION | | | REASON FOR DEVIATION FROM SCHEDULED MAINTENANCE OR REASON FOR FORCED OUTAGE AS APPROPRIATE | |
|-----------|---------------------------|----------------|-----------------|------------------|-------------------|--------|--------|--|---------------------------------------|
| | Scheduled | | Actual | | Scheduled | Forced | Actual | | |
| | FROM | TO | FROM | TO | | | | | |
| May | S | 5/5/2009 1:30 | 5/5/2009 13:19 | 5/5/2009 1:30 | 5/5/2009 13:19 | 11:49 | | 11:49 | High pressure compressor bleed valve. |
| | F | | | 5/15/2009 13:04 | 5/18/2009 12:41 | | 71:37 | | Fuel system leak. |
| | S | 5/29/2009 4:00 | 5/29/2009 18:11 | 5/29/2009 4:00 | 5/29/2009 18:11 | 14:11 | | 14:11 | Conductors and buses. |
| June | No outages > or = 6 hours | | | | | | | | |
| July | S | 7/17/2009 6:15 | 7/17/2009 14:00 | 7/17/2009 6:15 | 7/17/2009 14:00 | 7:45 | | 7:45 | Gas turbine washing. |
| August | No outages > or = 6 hours | | | | | | | | |
| September | No outages > or = 6 hours | | | | | | | | |
| October | F | | | 10/28/2009 14:30 | 10/29/2009 13:45 | | 23:15 | | Fire extinguishing system. |

Report dates of forced outage in columns headed Actual

Schedule vs Actual

| MONTH | MAINTENANCE | | | | HOURS OF DURATION | | | REASON FOR DEVIATION FROM SCHEDULED MAINTENANCE OR REASON FOR FORCED OUTAGE AS APPROPRIATE |
|-----------|---------------------------|----|--------|---------------|-------------------|--------|--------|--|
| | Scheduled | | Actual | | Scheduled | Forced | Actual | |
| | FROM | TO | FROM | TO | | | | |
| May | F | | → | → | 744:00 | | | Excessive vibration. |
| June | F | | → | 6/1/2009 2:00 | | 2:00 | | " " |
| July | No outages > or = 6 hours | | | | | | | |
| August | No outages > or = 6 hours | | | | | | | |
| September | No outages > or = 6 hours | | | | | | | |
| October | No outages > or = 6 hours | | | | | | | |

Report dates of forced outage in columns headed Actual

LOUISVILLE GAS AND ELECTRIC COMPANY

**Response to Information Requested in Appendix of
Commission's Order Dated January 27, 2010**

Case No. 2009-00508

Question No. 8

Witness: Mike Dotson

- Q-8. List all existing fuel contracts categorized as long-term (i.e., more than one year in length). Provide the following information for each contract:
- a. Supplier's name and address.
 - b. Name and location of production facility.
 - c. Date contract was executed.
 - d. Duration of contract.
 - e. Date(s) of each contract revision, modification or amendment.
 - f. Annual tonnage requirements.
 - g. Actual annual tonnage received since the contract's inception.
 - h. Percentage of annual requirements received during the contract's term.
 - i. Base price in dollars per ton.
 - j. Total amount of price escalations to date in dollars per ton.
 - k. Current price paid for coal under the contract in dollars per ton (i + j).
- A-8. Please see attached sheets.

| | |
|---------------------------------------|---|
| A. NAME/ADDRESS: | Alliance Coal, LLC / LGE06010 1717 South Boulder Avenue Tulsa, Oklahoma 74119-4886 |
| B. PRODUCTION FACILITY: OPERATOR | Hopkins County Coal, Warrior Coal, LLC and Webster County Coal, LLC |
| MINE LOCATION | Seller's Mines Western Kentucky |
| C. CONTRACT EXECUTED DATE: | December 16, 2005 |
| D. CONTRACT DURATION: | January 1, 2006 - December 31, 2011 |
| E. CONTRACT AMENDMENTS: | Amendment No. 1 effective September 6, 2006, amending payment terms Amendment No. 2 effective January 1, 2007 detailing shipping method for tonnage Amendment No. 3 effective March 1, 2007 amending payment calculations Amendment No. 4 effective January 1, 2008 amending pricing Amendment No. 5 effective January 1, 2009 amending pricing and adding Delivery Option 4 |
| F. ANNUAL TONNAGE REQUIREMENTS: | 2006 Up to 3,500,000 tons (Total with Synfuel Solutions Operating Contract) 2007 Up to 4,000,000 tons (Total with Synfuel Solutions Operating Contract) 2008 through 2011 - 4,000,000 tons per year |
| G. ACTUAL TONNAGE RECEIVED: | 2006 3,472,671 tons 2007 4,021,560 tons 2008 3,930,230 tons 2009 3,456,921 tons (through 10/31/09) |
| H. PERCENT OF ANNUAL REQUIREMENTS: | 2006 99% 2007 100% 2008 98% Contract (Synfuel Solutions Operating, see page 3 of 22) 2009 86% (through 10/31/09) |
| I. BASE PRICE: | 2006 Delivery Option 1 - \$31.00 per ton Delivery Option 2 - \$31.75 per ton Delivery Option 3 - \$32.75 per ton |

- 2007 Delivery Option 1 - \$32.09 per ton
Delivery Option 2 - \$32.48 per ton
Delivery Option 3 - \$33.50 per ton

- 2008 Delivery Option 1 - \$32.24 per ton
Delivery Option 2 - \$32.51 per ton
Delivery Option 3 - \$33.33 per ton

- 2009 Delivery Option 1 - \$33.80 per ton
Delivery Option 2 - \$34.21 per ton
Delivery Option 3 - \$34.97 per ton
Delivery Option 4 - \$34.86 per ton

- 2010 Delivery Option 1 - \$36.32 per ton
Delivery Option 2 - \$36.70 per ton
Delivery Option 3 - \$37.56 per ton
Delivery Option 4 - \$37.45 per ton

- 2011 Pricing for 2.0 Million tons:
Delivery Option 1 - \$37.18 per ton
Delivery Option 2 - \$37.63 per ton
Delivery Option 3 - \$38.47 per ton
Delivery Option 4 - \$38.35 per ton

- 2011 Pricing for remaining 2.0 Million tons:
To Be Negotiated

J. ESCALATIONS TO DATE:

None

K. CURRENT CONTRACT PRICE:

Delivery Option 1 - \$36.32 per ton
Delivery Option 2 - \$36.70 per ton
Delivery Option 3 - \$37.56 per ton
Delivery Option 4 - \$37.45 per ton

| | | |
|---------------------------------------|--|-----------------------------|
| A. NAME/ADDRESS: | The American Coal Company / J08016 101 Prosperous Place, Suite 125 Lexington, Kentucky 40509 | |
| B. PRODUCTION FACILITY: | | |
| OPERATOR: | The American Coal Company | |
| MINES: | Galatia Mine | |
| LOCATION: | Saline County, Illinois | |
| C. CONTRACT EXECUTED DATE: | April 1, 2008 | |
| D. CONTRACT DURATION: | July 1, 2008 - December 31, 2010 | |
| E. CONTRACT AMENDMENTS: | None | |
| F. ANNUAL TONNAGE REQUIREMENTS: | 2008 | 280,000 tons |
| | 2009 | 600,000 tons |
| | 2010 | 600,000 tons |
| G. ACTUAL TONNAGE: RECEIVED: | | |
| | | <u>LG&E</u> <u>KU</u> |
| | 2008 | 35,918 tons 203,131 tons |
| | 2009 | 0 tons 462,471 tons |
| | | (through 10/31/09) |
| H. PERCENT OF ANNUAL REQUIREMENTS: | 2008 | 85% |
| | 2009 | 77% (through 10/31/09) |
| I. BASE PRICE: (FOB Plant) | <u>Green River</u> | |
| | 2008 | \$66.00 per ton |
| | 2009 | \$66.00 per ton |
| | 2010 | \$66.00 per ton |
| BASE PRICE: (FOB Barge) | 2008 | \$54.00 per ton |
| | 2009 | \$54.00 per ton |
| | 2010 | \$54.00 per ton |
| J. ESCALATIONS TO DATE: | <u>FOB Plant</u> | |
| | \$1.41 per ton | |
| | <u>FOB Barge</u> | |
| | \$1.25 per ton | |

| | | |
|---------------------------------------|---|--------------|
| A. NAME/ADDRESS: | Armstrong Coal Company, Inc / J07032 407 Brown Road Madisonville, Kentucky 42431 | |
| B. PRODUCTION FACILITY: | Armstrong Coal Company, Inc | |
| OPERATOR | Various | |
| MINES | Muhlenberg County and Ohio County, | |
| LOCATION | Kentucky | |
| C. CONTRACT EXECUTED DATE: | December 20, 2007 | |
| D. CONTRACT DURATION: | January 1, 2008 - December 31, 2015 | |
| E. CONTRACT AMENDMENTS: | Amendment No. 1, effective July 1, 2008 amending base quantity and modifying diesel fuel adjustment to include explosives | |
| F. ANNUAL TONNAGE REQUIREMENTS: | 2008 600,000 tons 2009 2,300,000 tons 2010 3,800,000 tons 2011 and 2012 4,200,000 tons per year 2013 through 2015 4,000,000 tons per year | |
| G. ACTUAL TONNAGE: RECEIVED: | <u>LG&E</u> | <u>KU</u> |
| | 2008 511,414 tons | 82,623 tons |
| | 2009 1,261,370 tons | 439,063 tons |
| | (through 10/31/09) | |
| H. PERCENT OF ANNUAL REQUIREMENTS: | 2008 99% 2009 77% (through 10/31/09) | |
| I. BASE PRICE (FOB Barge) | 2008 Quality 1 - \$27.31 per ton Quality 2 - \$28.30 per ton 2009 Quality 1 - \$27.60 per ton Quality 2 - \$28.76 per ton 2010 First 200,000 tons: Quality 1 - \$27.60 per ton Quality 2 - \$28.76 per ton Remaining 3,600,000 tons: Quality 1 - \$28.21 per ton Quality 2 - \$29.63 per ton | |

2011 First 400,000 tons
Quality 1 - \$28.21 per ton
Quality 2 - \$29.63 per ton

Remaining 3,800,000 tons:
Quality 1 - \$28.36 per ton
Quality 2 - \$29.78 per ton

2012 First 200,000 tons
Quality 1 - \$28.36 per ton
Quality 2 - \$29.78 per ton

Remaining 4,000,000 tons:
Quality 1 - \$28.51 per ton
Quality 2 - \$29.93 per ton

2013 Quality 1 - \$28.66 per ton
Quality 2 - \$30.08 per ton

2014 Quality 1 - \$28.81 per ton
Quality 2 - \$30.23 per ton

2015 Quality 1 - \$28.96 per ton
Quality 2 - \$30.38 per ton

J. ESCALATIONS TO DATE: None

K. CURRENT CONTRACT PRICE: Quality 1 - \$27.60 per ton
Quality 2 - \$28.76 per ton

A. NAME/ADDRESS: Oxford Mining Company – Kentucky, LLC
 (contract acquired on 9/30/09 from
 Charolais Coal Sales, LLC / J07003
 544 Chestnut Street
 Coshocton, Ohio 43812

B. PRODUCTION FACILITY:
 OPERATOR Charolais Coal, No. 1, LLC & Charolais
 Coal Resources, LLC
 MINES Vogue West and Rock Crusher Mines
 LOCATION Muhlenberg County, Kentucky

C. CONTRACT EXECUTED DATE: December 21, 2006

D. CONTRACT DURATION: January 1, 2007 - December 31, 2011

E. CONTRACT AMENDMENTS: Contract assigned from Phoenix Coal Corp.
 & Charolais Coal Sales, LLC effective
 October 1, 2009. Amendment No. 1 dated
 effective October 1, 2009; term extended to
 December 31, 2011, and yearly base
 quantity amended.

F. ANNUAL TONNAGE
 REQUIREMENTS:

| | |
|------|--------------|
| 2007 | 591,172 tons |
| 2008 | 464,372 tons |
| 2009 | 756,835 tons |
| 2010 | 882,748 tons |
| 2011 | 804,873 tons |

G. ACTUAL TONNAGE
 RECEIVED:

| | <u>LG&E</u> | <u>KU</u> |
|------|--------------------|--------------|
| 2007 | 229,223 tons | 361,950 tons |
| 2008 | 79,983 tons | 384,389 tons |
| 2009 | 142,876 tons | 455,590 tons |
| | (through 10/31/09) | |

H. PERCENT OF ANNUAL
 REQUIREMENTS:

| | |
|------|------------------------|
| 2007 | 100% |
| 2008 | 100% |
| 2009 | 79% (through 10/31/09) |

I. BASE PRICE (FOB Barge)

| | |
|------|-----------------|
| 2007 | \$32.20 per ton |
| 2008 | \$32.75 per ton |
| 2009 | \$34.10 per ton |
| 2010 | \$36.10 per ton |

J. ESCALATIONS TO DATE: None

K. CURRENT CONTRACT PRICE: \$34.10 per ton

| | | |
|--------------------------------------|--|----------------|
| A. NAME/ADDRESS: | Consol Energy / Contract No. LGE05012/KUF05039 1800 Washington Road Pittsburgh, Pennsylvania 15241 | |
| B. PRODUCTION FACILITY: | | |
| OPERATOR | Consolidated Coal Company | |
| MINE | Shoemaker | |
| LOCATION | Marshall County, West Virginia | |
| C. CONTRACT EXECUTED DATE: | December 21, 2004 | |
| D. CONTRACT DURATION: | January 1, 2005 – June 30, 2009 | |
| E. CONTRACT AMENDMENTS: | Amendment No. 1 effective September 1, 2006 amending payment procedures Amendment No. 2 effective March 1, 2007 amending payment calculations Amendment No. 3 effective January 1, 2009 extending term to 6/30/09 | |
| F. ANNUAL TONNAGE REQUIREMENTS: | 2005 1,683,000 tons (Reflects force majeure tonnage of 67,000 tons) 2006 1,750,000 tons 2007 2,000,000 tons 2008 1,511,747 tons 2009 488,253 tons | |
| G. ACTUAL TONNAGE RECEIVED: | <u>LG&E</u> | <u>KU</u> |
| | 2005 893,663 tons | 682,774 tons |
| | 2006 981,344 tons | 812,338 tons |
| | 2007 852,199 tons | 797,522 tons |
| | 2008 465,046 tons | 1,461,137 tons |
| | 2009 187,776 tons | 298,079 tons |
| | (through 10/31/09) | |
| H. PERCENT OF ANNUAL REQUIREMENTS | 2005 94% 2006 102% 2007 82% 2008 96% 2009 100% (through 10/31/09) | |

I. BASE PRICE (FOB Barge):

Quality A

| | |
|------|-----------------|
| 2005 | \$29.75 per ton |
| 2006 | \$30.35 per ton |
| 2007 | \$32.22 per ton |
| 2008 | \$32.47 per ton |
| 2009 | \$32.47 per ton |

Quality B

| | |
|------|-----------------|
| 2005 | \$29.25 per ton |
| 2006 | \$29.84 per ton |
| 2007 | \$31.70 per ton |
| 2008 | \$31.94 per ton |
| 2009 | \$31.94 per ton |

J. ESCALATIONS TO DATE:

None

K. CURRENT CONTRACT PRICE:

| | |
|-----------|-----------------|
| Quality A | \$32.47 per ton |
| Quality B | \$31.94 per ton |

| | | |
|---|--|-------------------------------------|
| A. NAME/ADDRESS: | Western Kentucky Minerals, Inc (contract assigned on November 12, 2008 from Emerald International) J07029 P.O. Box 155 Philpot, Kentucky 42366 | |
| B. PRODUCTION FACILITY: OPERATOR MINE LOCATION | Western Kentucky Minerals Joe's Run Mine Davies County, Kentucky | |
| C. CONTRACT EXECUTED DATE: | August 3, 2007 | |
| D. CONTRACT DURATION: | July 15, 2007 – December 31, 2009 | |
| E. CONTRACT AMENDMENTS: | Amendment No. 1 effective September 1, 2007 amending quantity Amendment No. 2 effective March 1, 2008 amending quantity, weights and sampling, term, and price. Amendment No. 3 effective May 1, 2008 amending quality and price | |
| F. ANNUAL TONNAGE REQUIREMENTS: | 2007 | 81,000 tons |
| | 2008 | 300,000 tons |
| | 2009 | 300,000 tons |
| G. ACTUAL TONNAGE RECEIVED: | | |
| | | <u>LG&E</u> |
| | 2007 | 66,330 tons |
| | 2008 | 41,498 tons |
| | 2009 | 119,274 tons |
| | | <u>KU</u> |
| | | 7,571 tons |
| | | 149,727 tons |
| | | 104,285 tons |
| | | (through 10/31/09) |
| H. PERCENT OF ANNUAL REQUIREMENTS: | 2007 | 91% |
| | 2008 | 64% |
| | 2009 | 75% (through 10/31/09) |
| I. BASE PRICE (FOB Barge): | 2007 | \$30.45 per ton (first 60,000 tons) |
| | 2007 | \$31.00 per ton (remaining tons) |
| | 2008 | \$31.00 per ton (first 20,000 tons) |
| | 2008 | \$37.25 per ton (remaining tons) |
| | 2009 | \$38.00 per ton |

J. ESCALATIONS TO DATE: None

K. CURRENT CONTRACT PRICE: \$37.25 per ton

A. NAME/ADDRESS: Marietta Coal Company / LGE05010 –
KUF05033
629220 Georgetown Road
Cambridge, Ohio 43725

B. PRODUCTION FACILITY:
OPERATOR Marietta Coal Company
MINE Belmont Mine
LOCATION Belmont and Jefferson Counties, Ohio

MINE West Virginia Strip Mine
LOCATION Ohio County, West Virginia

C. CONTRACT EXECUTED DATE: November 15, 2004

D. CONTRACT DURATION: October 1, 2004 – May 31, 2010

E. CONTRACT AMENDMENTS:
Amendment No. 1 effective June 15, 2005
amending quality and price for two months
Amendment No. 2 effective September 1,
2006 amending payment terms
Amendment No. 3 effective March 1, 2007
amending payment calculations
Amendment No. 4 effective January 1, 2009
amending term through May 31, 2010 to
allow for make-up deliveries

F. ANNUAL TONNAGE REQUIREMENTS:

| | |
|------|--------------|
| 2004 | 30,000 tons |
| 2005 | 200,000 tons |
| 2006 | 200,000 tons |
| 2007 | 300,000 tons |
| 2008 | 300,000 tons |

G. ACTUAL TONNAGE RECEIVED:

| | <u>LG&E</u> | <u>KU</u> |
|------|--------------------|-------------|
| 2004 | 13,235 tons | 0 tons |
| 2005 | 104,512 tons | 0 tons |
| 2006 | 198,757 tons | 4,977 tons |
| 2007 | 146,281 tons | 5,021 tons |
| 2008 | 21,436 tons | 0 tons |
| 2009 | 29,127 tons | 24,184 tons |
| | (through 10/31/09) | |

H. PERCENT OF ANNUAL
REQUIREMENTS:

| | |
|------|--------------------------------|
| 2004 | 44% |
| 2005 | 52% |
| 2006 | 102% (includes 2005 carryover) |
| 2007 | 50% (includes 2006 carryover) |
| 2008 | 7% |
| 2009 | Carryover |

I. BASE PRICE (FOB Barge):

| | |
|------|-----------------|
| 2004 | \$26.75 per ton |
| 2005 | \$26.75 per ton |
| 2006 | \$27.25 per ton |
| 2007 | \$27.75 per ton |
| 2008 | \$28.25 per ton |

J. ESCALATIONS TO DATE:

None

K. CURRENT CONTRACT PRICE:

\$27.75 per ton

| | | | |
|---|---|------------------------------------|--------------|
| A. NAME/ADDRESS: | Patriot Coal Sales, LLC / J07037 12312 Olive Boulevard, Suite 400 St. Louis, Missouri 63141 | | |
| B. PRODUCTION FACILITY: OPERATOR MINE LOCATION | Patriot Coal and Ohio County Coal Patriot and Freedom Mines Henderson County, Kentucky | | |
| C. CONTRACT EXECUTED DATE: | January 15, 2008 | | |
| D. CONTRACT DURATION: | January 1, 2008 - December 31, 2009 | | |
| E. CONTRACT AMENDMENTS: | None | | |
| F. ANNUAL TONNAGE REQUIREMENTS: | 2008 | 1,250,000 tons | |
| | 2009 | 1,250,000 tons | |
| G. ACTUAL TONNAGE RECEIVED: | | <u>LG&E</u> | <u>KU</u> |
| | 2008 | 699,815 tons | 470,649 tons |
| | 2009 | 406,588 tons (through 10/31/09) | 564,616 tons |
| H. PERCENT OF ANNUAL REQUIREMENTS: | 2008 | 94% | |
| | 2009 | 78% (through 10/31/09) | |
| I. BASE PRICE (FOB Barge): | 2008 | \$30.00 per ton | |
| | 2009 | \$31.00 per ton | |
| J. ESCALATIONS TO DATE: | None | | |
| K. CURRENT CONTRACT PRICE: | \$31.00 per ton | | |

| | | | |
|---|---|--|--------------|
| A. NAME/ADDRESS: | Patriot Coal Sales, LLC / J09001 12312 Olive Boulevard, Suite 400 St. Louis, Missouri 63141 | | |
| B. PRODUCTION FACILITY: OPERATOR MINE LOCATION | Patriot Coal and Ohio County Coal Patriot and Freedom Mines Henderson County, Kentucky | | |
| C. CONTRACT EXECUTED DATE: | February 24, 2009 | | |
| D. CONTRACT DURATION: | January 1, 2009 - December 31, 2010 | | |
| E. CONTRACT AMENDMENTS: | None | | |
| F. ANNUAL TONNAGE REQUIREMENTS: | 2009 | 200,000 tons | |
| | 2010 | 1,000,000 tons | |
| G. ACTUAL TONNAGE RECEIVED: | | <u>LG&E</u> | <u>KU</u> |
| | 2009 | 80,876 tons (through 10/31/09) | 119,694 tons |
| H. PERCENT OF ANNUAL REQUIREMENTS: | 2009 | 100% (through 10/31/09) | |
| I. BASE PRICE (FOB Barge): | 2009 | \$38.00 per ton Quality 1 \$49.00 per ton Quality 2 | |
| | 2010 | \$39.00 per ton Quality 1 \$51.00 per ton Quality 2 | |
| J. ESCALATIONS TO DATE: | | \$0.21 per ton Quality 1 \$0.28 per ton Quality 2 | |
| K. CURRENT CONTRACT PRICE: | | \$38.21 per ton Quality 1 \$49.28 per ton Quality 2 | |

| | | |
|------------------------------------|---|--------------|
| A. NAME/ADDRESS: | Peabody COALSALES / LGE06012- KUF06118 - J07005 - J07006 701 Market Street, Suite 830 St. Louis, Missouri 63101-1826 | |
| B. PRODUCTION FACILITY: | | |
| OPERATOR | Patriot Coal and Ohio County Coal | |
| MINE | Patriot and Freedom Mines | |
| LOCATION | Henderson County, Kentucky | |
| OPERATOR | Black Beauty Coal Company | |
| MINE | Somerville Mine | |
| LOCATION | Gibson County, Indiana | |
| C. CONTRACT EXECUTED DATE: | May 23, 2006 | |
| D. CONTRACT DURATION: | April 1, 2006 - December 31, 2011 | |
| E. CONTRACT AMENDMENTS: | Amendment No. 1 effective September 1, 2006 amending payment procedures Amendment No. 2 effective November 20, 2006 adding coal synfuel Amendment No. 3 effective March 1, 2007 amending payment calculations Amendment No. 4 effective July 1, 2007 amending tonnage to year 2007 Amendment No. 5 effective January 1, 2008 amending term, tonnage and price Amendment No. 6 effective January 1, 2009 amending term, tonnage and price | |
| F. ANNUAL TONNAGE REQUIREMENTS: | 2006 937,500 tons (Total with Synthetic Fuel Enterprises Contract) 2007 2,000,000 tons (Total with Synthetic Fuel Enterprises Contract) 2008 1,400,000 tons 2009 1,000,000 tons 2010 1,000,000 tons 2011 1,000,000 tons | |
| G. ACTUAL TONNAGE RECEIVED: | <u>LG&E</u> | <u>KU</u> |
| | 2006 957,654 tons | 0 tons |
| | 2007 1,770,880 tons | 225,229 tons |
| | 2008 1,142,551 tons | 181,615 tons |
| | 2009 829,204 tons | 3,106 tons |
| | (through 10/31/09) | |

| | | |
|------------------------------------|------|--|
| H. PERCENT OF ANNUAL REQUIREMENTS: | 2006 | 102% |
| | 2007 | 100% |
| | 2008 | 96% |
| | 2009 | 83% (through 10/31/09) |
| I. BASE PRICE (FOB Barge): | 2006 | \$29.95 per ton - Quality A Barge \$28.00 per ton - Quality B Rail \$30.36 per ton - Quality B Barge |
| | 2007 | \$30.60 per ton - Quality A Barge \$28.60 per ton - Quality B Rail \$31.02 per ton - Quality B Barge |
| | 2008 | \$29.26 per ton - Rail \$31.60 per ton - Barge |
| | 2009 | \$30.41 Rail (First 750,000 tons) \$36.25 Rail (Next 250,000 tons) |
| | 2010 | \$37.25 per ton – Rail |
| | 2011 | \$39.25 per ton – Rail |
| J. ESCALATIONS TO DATE: | | None |
| K. CURRENT CONTRACT PRICE: | | \$30.41 per ton – Rail |

| | | |
|---|--|--------------|
| A. NAME/ADDRESS: | Rhino Energy, LLC / J08028 3120 Wall Street, Suite 310 Lexington, Kentucky 40513 | |
| B. PRODUCTION FACILITY: OPERATOR MINE LOCATION | Sands Hill Coal Company Sands Hill Mine Jackson and Vinton Counties, Ohio | |
| C. CONTRACT EXECUTED DATE: | July 13, 2008 | |
| D. CONTRACT DURATION: | July 1, 2008 – December 31, 2012 | |
| E. CONTRACT AMENDMENTS: | None | |
| F. ANNUAL TONNAGE REQUIREMENTS: | 2008 90,000 tons 2009 360,000 tons 2010 360,000 tons 2011 360,000 tons 2012 360,000 tons | |
| G. ACTUAL TONNAGE RECEIVED: | <u>LG&E</u> | <u>KU</u> |
| | 2008 31,033 tons | 53,552 tons |
| | 2009 138,339 tons (through 10/31/09) | 165,039 tons |
| H. PERCENT OF ANNUAL REQUIREMENTS: | 2008 94% 2009 84% (through 10/31/09) | |
| I. BASE PRICE (FOB Barge): | 2008 \$49.25 per ton 2009 \$49.25 per ton 2010 \$50.25 per ton 2011 \$51.85 per ton 2012 \$53.40 per ton | |
| J. ESCALATIONS TO DATE: | -\$4.67 per ton | |
| K. CURRENT CONTRACT PRICE: | \$44.58 per ton | |

A. NAME/ADDRESS: Smoky Mountain Coal Corp. / LGE02013 –
KUF02860
9725 Cogdill Road, Suite 203
Knoxville, Tennessee 42413

B. PRODUCTION FACILITY:

| | |
|----------|--------------------------|
| OPERATOR | KMMC Mining |
| MINE | Vision #9 |
| LOCATION | Webster County, Kentucky |
| OPERATOR | Allied Reserves, Inc. |
| MINE | Onton Reserve |
| LOCATION | Webster County, Kentucky |

C. CONTRACT EXECUTED DATE: February 27, 2002

D. CONTRACT DURATION: January 1, 2002 - December 31, 2009

E. CONTRACT AMENDMENTS:

Amendment No. 1 effective January 1, 2004 amending term, quantity, quality, and price.
Amendment No. 2 effective January 1, 2006 amending term, quantity, quality and price.
Amendment No. 3 effective September 1, 2006 amending payment procedures.
Amendment No. 4 effective January 1, 2007 amending term, quantity and price.
Amendment No. 5 effective March 1, 2007 amending payment calculation.

F. ANNUAL TONNAGE REQUIREMENTS:

| | |
|------|----------------|
| 2002 | 400,000 tons |
| 2003 | 450,000 tons |
| 2004 | 600,000 tons |
| 2005 | 700,000 tons |
| 2006 | 1,200,000 tons |
| 2007 | 850,000 tons |
| 2008 | 950,000 tons |
| 2009 | 400,000 tons |

G. ACTUAL TONNAGE
RECEIVED:

| | <u>LG&E</u> | <u>KU</u> |
|--------------------|-----------------|--------------|
| 2002 | 332,114 tons | 52,826 tons |
| 2003 | 275,536 tons | 203,370 tons |
| 2004 | 314,929 tons | 279,667 tons |
| 2005 | 357,881 tons | 339,349 tons |
| 2006 | 600,627 tons | 552,154 tons |
| 2007 | 517,857 tons | 380,192 tons |
| 2008 | 167,819 tons | 182,352 tons |
| 2009 | 0 tons | 0 tons |
| (through 10/31/09) | | |

H. PERCENT OF ANNUAL
REQUIREMENTS:

| | |
|------|-----------------------|
| 2002 | 96% |
| 2003 | 106% |
| 2004 | 99% |
| 2005 | 100% |
| 2006 | 96% |
| 2007 | 106% |
| 2008 | 37% |
| 2009 | 0% (through 10/31/09) |

I. BASE PRICE (FOB Barge):

| | |
|------------------|-----------------|
| <u>Quality A</u> | |
| 2002 / 2003 | \$25.85 per ton |
| 2004 | \$26.75 per ton |
| <u>Quality B</u> | |
| 2002 / 2003 | \$23.82 per ton |
| 2004 | \$24.61 per ton |
| <u>Quality C</u> | |
| 2004 | \$22.85 per ton |
| 2005 | \$23.74 per ton |
| 2006 | \$28.25 per ton |
| 2007 | \$30.22 per ton |
| 2008 | \$31.00 per ton |
| 2009 | \$35.95 per ton |
| <u>Quality D</u> | |
| 2004 | \$21.89 per ton |
| 2005 | \$22.66 per ton |
| 2006 | \$27.30 per ton |
| 2007 | \$29.24 per ton |
| 2008 | \$30.01 per ton |
| 2009 | \$34.87 per ton |

J. ESCALATIONS TO DATE:

None

K. CURRENT CONTRACT PRICE:

Quality C
\$31.00 per ton

Quality D
\$30.01 per ton

LOUISVILLE GAS AND ELECTRIC COMPANY

**Response to Information Requested in Appendix of
Commission's Order Dated January 27, 2010**

Case No. 2009-00508

Question No. 9

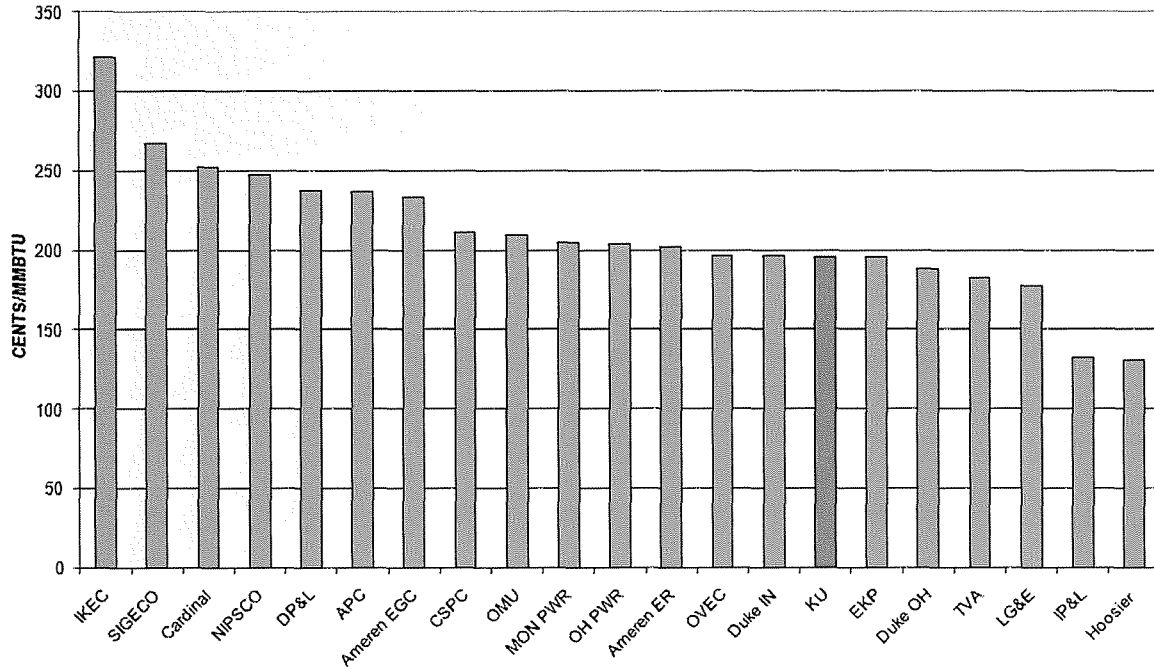
Witness: Mike Dotson

- Q-9. a. State whether LG&E regularly compares the price of its coal purchases with those paid by other electric utilities.
- b. If yes, state:
- (1) How LG&E's prices compare with those of other utilities for the review period; and
 - (2) The utilities that are included in this comparison and their locations.
- A-9. a. Yes.
- b. LG&E compares pricing of its coal purchases with neighboring utilities from FERC Form No. 423 data that is compiled by Energy Velocity database. The utilities included in the comparison are shown on the list found on page 1 of the Attachment to this response. The chart found on page 2 of the Attachment shows the comparison for coal greater than 5.0 lbs. SO₂ content, which is in line with LG&E's scrubbed units.

Attachment to Response to Question No. 9**Page 1 of 2****Dotson****Utilities in Comparison List**

| UTILITY | ABBREVIATED | PLANT LOCATIONS |
|--|--------------------|------------------------------|
| AmerenEnergy Generating Co | Ameren ER | Illinois |
| AmerenEnergy Resources Generating Co | Ameren EGC | Illinois |
| Appalachian Power Co | APC | Virginia, West Virginia |
| Cardinal Operating (AEP) | Cardinal | Ohio |
| Columbus Southern Power Co | CSPC | Kentucky, Ohio |
| Dayton Power & Light Co (The) | DP&L | Ohio |
| Duke Energy Indiana | Duke IN | Indiana |
| Duke Energy Ohio | Duke OH | Ohio |
| East Kentucky Power Coop | EKP | Kentucky |
| Electric Energy Inc | EEI | Illinois |
| Hoosier Energy Rural Electric Coop Inc | Hoosier | Indiana |
| Indiana Kentucky Electric Corp | IKEC | Indiana |
| Indiana Michigan Power Co | IMPC | Indiana |
| Indianapolis Power & Light | IP&L | Indiana |
| Kentucky Power Co | KPC | Kentucky |
| Kentucky Utilities Co | KU | Kentucky |
| Louisville Gas & Electric Co | LG&E | Kentucky |
| Monongahela Power Co | MON PWR | West Virginia |
| Northern Indiana Public Service Co | NIPSCO | Indiana |
| Ohio Power Co | OH PWR | Ohio, West Virginia |
| Ohio Valley Electric Corp | OVEC | Ohio |
| Owensboro Municipal Utilities | OMU | Kentucky |
| Southern Indiana Gas & Electric Co | SIGECO | Indiana |
| Tennessee Valley Authority | TVA | Alabama, Kentucky, Tennessee |

"SCRUBBED" PRICE COMPARISON
(Nov 08 - Oct 09)



LOUISVILLE GAS AND ELECTRIC COMPANY

**Response to Information Requested in Appendix of
Commission's Order Dated January 27, 2010**

Case No. 2009-00508

Question No. 10

Witness: Mike Dotson

Q-10. State the percentage of LG&E's coal, as of the date of this Order, that is delivered by:

- a. Rail;
- b. Truck; or
- c. Barge.

A-10. a. Rail - 61%

b. Truck - 0%

c. Barge - 39%

LOUISVILLE GAS AND ELECTRIC COMPANY

**Response to Information Requested in Appendix of
Commission's Order Dated January 27, 2010**

Case No. 2009-00508

Question No. 11

Witness: Mike Dotson

- Q-11. a. State LG&E's coal inventory level in tons and in number of days' supply as of October 31, 2009. Provide this information by generating station and in the aggregate.
- b. Describe the criteria used to determine number of days' supply.
- c. Compare LG&E's coal inventory as of October 31, 2009 to its inventory target for that date.
- d. If actual coal inventory exceeds inventory target by 10 days' supply, state the reasons for excessive inventory.
- e. (1) State whether LG&E expects any significant changes in its current coal inventory target within the next 12 months.
- (2) If yes, state the expected change and the reasons for this change.

- A-11. a. As of October 31, 2009;

For previous FAC proceedings, LG&E calculated the days in inventory using 12 months of historic burn data. Consistent with this method, the coal inventory and days' supply is as follows:

| | |
|---------------------|-------------------------|
| Cane Run Station | 269,520 Tons; 62 Days |
| Mill Creek Station | 764,904 Tons; 58 Days |
| Trimble Co. Station | 326,318 Tons; 74 Days |
| Total | 1,360,742 Tons; 62 Days |

However, as explained in the response to part (b) below, anomalies are often created by using historic or forward burn calculations. Therefore, LG&E developed an alternate method for calculating the days in inventory that is

more representative of the actual days of operation for each station that can be achieved with the inventory on site. The coal inventory on site and the day's supply using this methodology is as follows:

| | | |
|---------------------|-------------------------|---------------------|
| Cane Run Station | 269,520 Tons; 46 Days | Target 29 – 45 Days |
| Mill Creek Station | 764,904 Tons; 52 Days | Target 31 – 48 Days |
| Trimble Co. Station | 326,318 Tons; 64 Days | Target 35 – 54 Days |
| Total | 1,360,742 Tons; 53 Days | Target 31 – 49 Days |

- b. As noted above, in response to previous FAC proceedings LG&E calculated the days in inventory according to a look back (12 months of historic burn) as historically reported. For internal planning/budget/forecasting LG&E calculated day's inventory on a forward looking basis, using the 12 month forward burn (tons divided by budgeted burn). Anomalies are often created by the historical or forward burn calculation when plants have extensive shutdowns or other significant changes. For some inventory levels, historical or forward burn data may overstate inventory relative to max burn potential, increasing risk of low fuel inventory affecting plant operations. Therefore, an alternate method of presenting days of inventory was needed. During 2009, LG&E developed a revised method of calculating days in inventory based on each plant's coal burn capability (coal tons divided by 90% of each generating unit's heat input description from its air permit to operate). By utilizing this method a day of inventory at KU's Green River Station has the same meaning as a day of inventory at LG&E's Mill Creek Station or any other plant in our system. With one day of inventory, each plant has the capability to operate nearly at full load for a day. Under this methodology, the days in inventory calculation more accurately represents how long each facility could operate with the coal inventory on hand.

In conjunction with the change in methodology for calculating a "day of inventory", upper and lower tons/day targeted inventory days were established for each plant taking into consideration that plants operating parameters. Each plant's "least cost" inventory range is established annually during the planning process based on historical coal burn/receipt variances, procurement reaction time for long-term fuel supply agreements, current coal and electricity prices offset by carrying and outage costs.

- c. See (a) above.
- d. Under LG&E's revised days in inventory calculation the actual coal inventory does not exceed the inventory target by 10 days for either the total system or individual plant.

- e. (1) LG&E does not expect significant changes in its current inventory target levels; however, during the Companies' planning cycle minor adjustments may be made to the inventory targets if warranted.
- (2) Not Applicable.

LOUISVILLE GAS AND ELECTRIC COMPANY

**Response to Information Requested in Appendix of
Commission's Order Dated January 27, 2010**

Case No. 2009-00508

Question No. 12

Witness: Mike Dotson

Q-12. a. State whether LG&E has audited any of its coal contracts during the period from May 1, 2009 through October 31, 2009.

b. If yes, for each audited contract:

(1) Identify the contract;

(2) Identify the auditor;

(3) State the results of the audit; and

(4) Describe the actions that LG&E took as a result of the audit.

A-12. a. No. LG&E has not conducted any financial audits of coal companies. LG&E's current coal contracts are fixed price or a portion of the base contract price is adjusted using government published indices to reflect the changes in the cost. These agreements thus do not require audits. LG&E's Manager Fuels Technical Services or Mining Engineer does conduct scheduled on-site reviews and inspections of the mining operations and sampling systems of each vendor up to twice a year and may conduct unscheduled visits. Additionally, LG&E employees may visit a vendor as needed to address problems and issues at any time.

Coal mine safety regulations were imposed by the Federal Mine Safety and Health Administration. The U. S. Congress passed the Mine Improvement and New Emergency Response Act of 2006 (MINER Act), which became law on June 15, 2006. For claims received, LG&E has hired Weir International, Inc. (a consultant with experience in the mining industry) to review the requests.

Smoky Mountain Coal, in accordance with the provisions of Section 8.3 New Imposition of Agreement LG&E02013, requested a price increase of \$1.48 per ton for the period July 1, 2007 – May 31, 2008 and a price increase of \$0.88 per ton for the period of June 1, 2008 – September 30, 2008. Weir is reviewing the claims for this period. As indicated in the response to Question No. 14, LG&E is currently in litigation on this contract.

Alliance Coal, in accordance with the provisions of Section 8.3 Governmental Impositions of Agreement LG&E06010, has requested a price increase of \$0.48 per ton for new law changes occurring after March 1, 2007 and applies to 2.0 million tons shipped in 2008. Weir is reviewing the claim for this period.

Coalsales, LLC, in accordance with the provisions of Section of 8.4 New Imposition of Agreement LGE06012, requested a price increase of \$1.15 per ton for calendar year 2007. A draft Weir report has been forwarded to Coalsales for review.

Patriot Coal Sales LLC, in accordance with the provisions of Section 8.4 New Impositions of Agreement J07037, has requested a price increase for calendar years 2008 and 2009. A draft Weir report has been forwarded to Patriot for review.

Patriot Coal Sales LLC, in accordance with the provisions of Section 8.5 Price Adjustments for Changes in Governmental Impositions of Contract J09001, has requested price adjustments for calendar year 2009. A draft Weir report has been forwarded to Patriot for review.

Armstrong Coal Company, in accordance with the provisions of Section 8.5 New Impositions of Agreement J07032, has requested a price increase for the period of April – June 2009. A draft Weir report has been forwarded to Armstrong for review. Armstrong Coal Company has requested a price increase for the period of July – September 2009; the request is under review.

- b. Not applicable.

LOUISVILLE GAS AND ELECTRIC COMPANY

**Response to Information Requested in Appendix of
Commission's Order Dated January 27, 2010**

Case No. 2009-00508

Question No. 13

Witness: Robert M. Conroy

- Q-13. a. State whether LG&E received any customer complaints regarding its FAC during the period from May 1, 2009 through October 31, 2009.
- b. If yes, for each complaint, state:
- (1) The nature of the complaint; and
 - (2) LG&E's response.
- A-13. a. No.
- b. Not applicable.

LOUISVILLE GAS AND ELECTRIC COMPANY

**Response to Information Requested in Appendix of
Commission's Order Dated January 27, 2010**

Case No. 2009-00508

Question No. 14

Witness: Mike Dotson

- Q-14. a. State whether LG&E is currently involved in any litigation with its current or former coal suppliers.
- b. If yes, for each litigation:
- (1) Identify the coal supplier;
 - (2) Identify the coal contract involved;
 - (3) State the potential liability or recovery to LG&E;
 - (4) List the issues presented; and
 - (5) Provide a copy of the complaint or other legal pleading that initiated the litigation and any answers or counterclaims. If a copy has previously been filed with the Commission, provide the date on which it was filed and the case in which it was filed.
- c. State the current status of all litigation with coal suppliers.

A-14. a. Yes

b. **Coal Supply Agreement – Kindill Mining**

- (1) Kindill Mining: Kindill Mining (an affiliate of Horizon Natural Resources successor of AEI Coal Sales Company, Inc.) filed for Chapter 11 bankruptcy protection on August 25, 2003. LG&E filed a Proof of Claim on October 18, 2004.
- (2) Coal Supply Agreement LG&E 97-211-026 dated July 1, 1997.

- (3) LG&E seeks to recover damages sustained by LG&E arising from the rejection of the Contract, which supplied coal to LG&E's Cane Run Station.
 - (4) The Contract was rejected by the Debtor pursuant to an Order rejecting certain executory contracts entered on September 30, 2004.
 - (5) A copy of the Proof of Claim filed in the United States Bankruptcy Court in the Eastern District of Kentucky was filed with the Commission in Case No. 2004-00466.
- c. A liquidating plan was approved and the claims process is ongoing.

On February 6, 2008, LG&E received check no. 114983 in the amount of \$33,657.93 for the first distribution of the HNR liquidating trust. On July 9, 2009, LG&E received check no. 1157431 in the amount of \$8,799.20 for the second distribution of the HNR liquidating trust. On December 31, 2009, LG&E received check no. 1216603 in the amount of \$4,888.54 for the final distribution of the HNR liquidating trust. All distribution amounts were credited against coal purchase expense for Cane Run Station. LG&E's involvement in this case has concluded.

b. **Coal Supply Agreement KUF02860/LGE02013**

- (1) Resource Sales, Inc. ("Resource"), Allied Resources, Inc. ("Allied"), Cochise Coal Company, Inc. ("Cochise"), and Smoky Mountain Coal Corporation ("SMCC")
- (2) Coal Purchase Order LGE02013 dated as of January 1, 2002, as amended.
- (3) LG&E seeks to recover damages sustained by LG&E arising from the non-delivery of 1,019,829 tons of coal. Plaintiffs seek to have the court interpret the force majeure provision in the Agreement, and to recover the amount of payments withheld by LG&E to offset LG&E's claim for damages.
- (4) Plaintiffs claim the force majeure provision should be interpreted in such a way that LG&E is not entitled to any more deliveries of coal pursuant to the Agreement. LG&E disagrees and withheld certain payments, as permitted under the Agreement, and demands that Plaintiffs resume deliveries as required under the Agreement.
- (5) A copy of the Complaint filed by the Plaintiffs in the Circuit Court of Webster County, Kentucky, Civil Action No. 08-CI-00334, a copy of the First Amended Complaint filed by the Plaintiffs in the Circuit Court of Webster County, Kentucky, Civil Action No. 08-CI-00334, and a copy of the Answer

and Counterclaim filed by LG&E was filed with the Commission in Case No. 2008-00521.

- c. This case is in the discovery phase and is ongoing.

LOUISVILLE GAS AND ELECTRIC COMPANY

**Response to Information Requested in Appendix of
Commission's Order Dated January 27, 2010**

Case No. 2009-00508

Question No. 15

Witness: Mike Dotson

Q-15. a. During the period from May 1, 2009 through October 31, 2009, state whether there have been any changes to LG&E's written policies and procedures regarding its fuel procurement.

b. If yes:

(1) Describe the changes;

(2) Provide the written policies and procedures as changed;

(3) State the date(s) the changes were made; and

(4) Explain why the changes were made.

A-15. a. No.

b. Not applicable.

LOUISVILLE GAS AND ELECTRIC COMPANY

**Response to Information Requested in Appendix of
Commission's Order Dated January 27, 2010**

Case No. 2009-00508

Question No. 16

Witness: Mike Dotson

- Q-16. a. State whether LG&E is aware of any violations of its policies and procedures regarding fuel procurement that occurred prior to or during the period from May 1, 2009 through October 31, 2009.
- b. If yes, for each violation:
- (1) Describe the violation;
 - (2) Describe the action(s) that LG&E took upon discovering the violation; and
 - (3) Identify the person(s) who committed the violation.
- A-16. a. No.
- b. Not applicable.

LOUISVILLE GAS AND ELECTRIC COMPANY

**Response to Information Requested in Appendix of
Commission's Order Dated January 27, 2010**

Case No. 2009-00508

Question No. 17

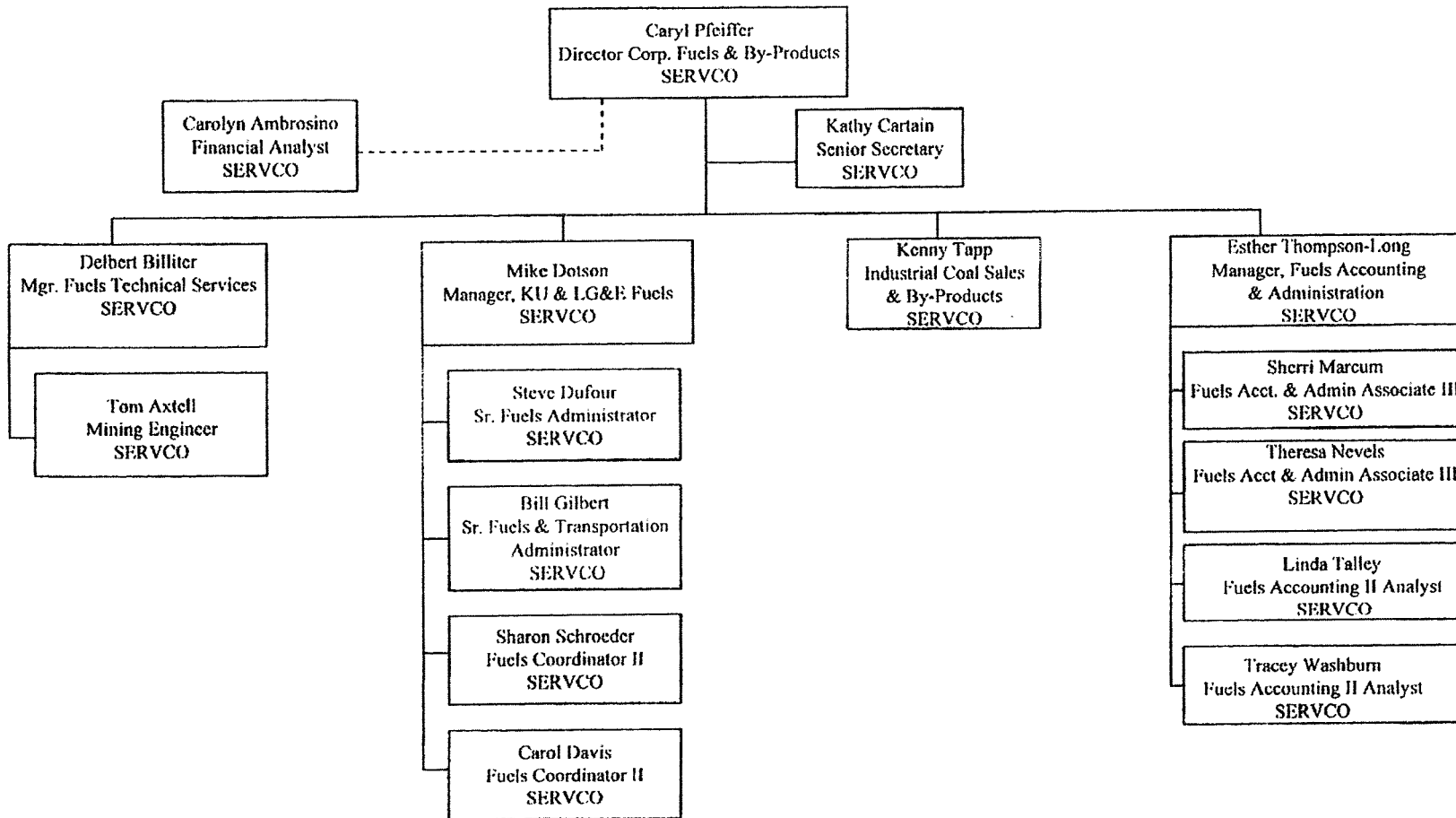
Witness: Mike Dotson

Q-17. Identify and explain the reasons for all changes that occurred during the period from May 1, 2009 through October 31, 2009 in the organizational structure and personnel of the departments or divisions that are responsible for LG&E's fuel procurement activities.

A-17. The following changes occurred in the Fuels Department during the period under review due to the WKE Unwind. See attached.

Delbert Billiter, returned to his position of Manager Fuels Technical Services.
Tracey Washburn returned to her position of Fuels Accounting II Analyst.
Contractor/Fuels Accounting Analysts Jerry Baker and Ron Arnold left.

Corporate Fuels and By-Products
July, 2009



LOUISVILLE GAS AND ELECTRIC COMPANY

**Response to Information Requested in Appendix of
Commission's Order Dated January 27, 2010**

Case No. 2009-00508

Question No. 18

Witness: Frederick D. Jackson

- Q-18. a. Identify all changes that LG&E has made during the period under review to its maintenance and operation practices that also affect fuel usage at LG&E's generation facilities.
- b. Describe the impact of these changes on LG&E's fuel usage.
- A-18. a. None.
- b. Not applicable.

LOUISVILLE GAS AND ELECTRIC COMPANY

**Response to Information Requested in Appendix of
Commission's Order Dated January 27, 2010**

Case No. 2009-00508

Question No. 19

Witness: Mike Dotson

Q-19. List each written coal supply solicitation issued during the period from May 1, 2009 through October 31, 2009.

- a. For each solicitation, provide the date of the solicitation, the type of solicitation (contract or spot), the quantities solicited, a general description of the quality of coal solicited, the time period over which deliveries were requested, and the generating unit(s) for which the coal was intended.
- b. For each solicitation, state the number of vendors to whom the solicitation was sent, the number of vendors who responded, and the selected vendor. Provide the bid tabulation sheet or corresponding document that ranked the proposals. (This document should identify all vendors who made offers.) State the reasons for each selection.

A-19. In Case No. 2009-00288, a review of LG&E's FAC for the period November 1, 2008 through April 30, 2009, the final selection of the vendors who responded to the solicitation dated March 2, 2009 was not complete at the time the data responses were filed. The requested information for selected vendors is provided below.

- a. Date: March 2, 2009
Contract/Spot: Contract and Spot
Quantities: No minimum or maximum specified
Quality: Suitable for LG&E power plants, KU's Ghent power plant and KU's Brown power plant (beginning mid-year 2009)
Period: Up to ten years
Generating Units: All LG&E coal fired units, KU's Ghent power plant and KU's Brown power plant
- b. Number of vendors receiving bids: 167
Number of vendor responses: 24

Selected vendors: The vendors selected were based upon the lowest evaluated delivered cost.

Patriot Coal Sales, J10002

Patriot Coal Sales, J10003

Consol Energy (Consolidation Coal Company) J10004

The bid analysis information is confidential and proprietary information and is being filed with the Commission under seal pursuant to a Petition for Confidential Protection.

- a. Date: September 7, 2009
Contract/Spot: Contract or Spot
Quantities: No minimum or maximum specified
Quality: Suitable for LG&E power plants and KU's Ghent power plant (beginning year 2010)
Period: Up to 10 years
Generating Units: All LG&E coal fired units and KU's Ghent power plant (beginning year 2010)

- b. Number of vendors receiving bids: 165
Number of vendors responded: 18
Selected vendor(s): The final selection of the vendors has not been made at this time. Negotiations are still in progress. The names of the selected vendors and the supporting bid tabulation sheet will be provided to the Commission after the negotiations are complete and the vendors are chosen.

LOUISVILLE GAS AND ELECTRIC COMPANY

**Response to Information Requested in Appendix of
Commission's Order Dated January 27, 2010**

Case No. 2009-00508

Question No. 20

Witness: Mike Dotson

Q-20. List each oral coal supply solicitation issued during the period from May 1, 2009 through October 31, 2009.

- a. For each solicitation, state why the solicitation was not written, the date(s) of the solicitation, the quantities solicited, a general description of the quality of coal solicited, the time period over which deliveries were requested, and the generating unit(s) for which the coal was intended.
- b. For each solicitation, identify all vendors solicited and the vendor selected. Provide the tabulation sheet or other document that ranks the proposals. (This document should identify all vendors who made offers.) State the reasons for each selection.

A-20. a. None.

- b. Not applicable.

LOUISVILLE GAS AND ELECTRIC COMPANY

**Response to Information Requested in Appendix of
Commission's Order Dated January 27, 2010**

Case No. 2009-00508

Question No. 21

Witness: Robert M. Conroy

- Q-21. a. List all inter-system sales during the period under review in which LG&E used a third party's transmission system.
- b. For each sale listed above:
- (1) Describe how LG&E addressed for FAC reporting purposes the cost of fuel expended to cover any line losses incurred to transmit its power across the third party's transmission system.
 - (2) State the line loss factor used for each transaction and describe how that line loss factor was determined.
- A-21. a. There were no inter-system sales during the review period which required a third party's transmission system.
- b. (1) Not applicable.
- (2) Not applicable.

LOUISVILLE GAS AND ELECTRIC COMPANY

**Response to Information Requested in Appendix of
Commission's Order Dated January 27, 2010**

Case No. 2009-00508

Question No. 22

Witness: Robert M. Conroy

Q-22. Describe each change that LG&E made during the period under review to its methodology for calculating inter-system sales line losses.

A-22. There have been no changes. LG&E continues to use a line loss factor of one percent to determine the cost of fuel associated with line losses incurred to make an intersystem sale and recovered from such sale consistent with the Commission's December 2, 1999 Order in Case Nos. 96-524-A, 96-524-B, 96-524-C, and the March 25, 2003 Order in Case No. 2002-00225.

LOUISVILLE GAS AND ELECTRIC COMPANY

**Response to Information Requested in Appendix of
Commission's Order Dated January 27, 2010**

Case No. 2009-00508

Question No. 23

Witness: Robert M. Conroy

- Q-23. LG&E offers renewable energy to its customers under tariffs SGE – Small Green Energy Rider and LGE - Large Green Energy Rider. State whether the renewable power purchased to provide service under these tariffs is recorded in the FAC. If so, state where in the FAC filing the power purchases are recorded.
- A-23. LG&E does not purchase renewable power under either tariff SGE or LGE. Under SGE and LGE, LG&E purchases Renewable Energy Credits based upon the participating customers voluntary contributions to the program. No expenses associated with this program are recorded in the FAC.