



No Life Insurance?

It Could Cost Your Family A Fortune!

10-Yr Level Term Life Insurance \$500,000 Policy (monthly premiums)	age	male
	35	\$16.97
	40	\$21.75
	45	\$34.80
	50	\$50.90

Get a FREE QUOTE
CLICK HERE



AccuQUOTE®
Saving You Money For Life

[HELP](#)

Earnings Center > Company Earnings

[Earnings Estimates](#) | [Broker Recommendation](#) | [Forecasts](#) | [Earnings Snapshots](#) | [Performance Following a Surprise](#) | [Peer and Industry Comparisons](#)

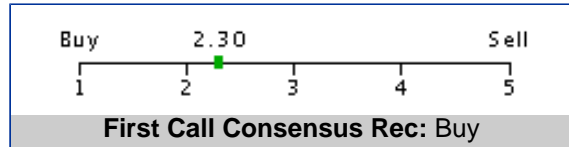
► **Earnings Estimates**

AGL RESOURCES INC (ATG)

Sector: Public Utilities

Industry: Gas Utilities

Last Updated: November 11, 2006



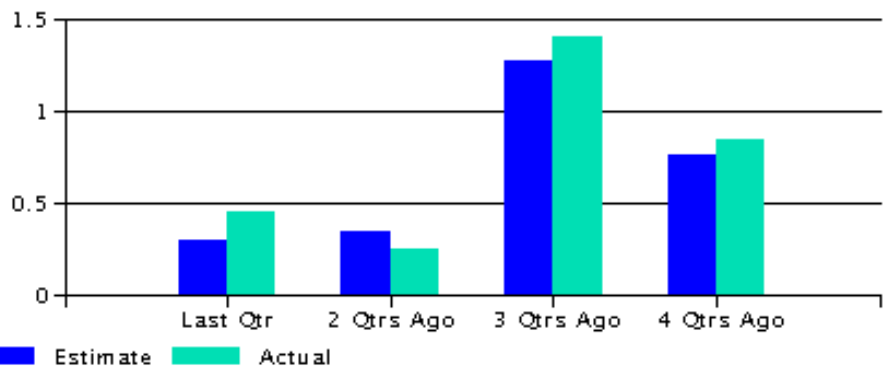
The Analyst Company Sentiment is NEUTRAL

Analyst Sentiment is determined by a quantitative company scoring model that scores company level sentiment based on analyst earnings revisions. The scoring model considers the following factors: analyst experience, magnitude of the revision, proximity of the revision to the actual earnings report date, range of estimates, historic stock performance following a given analyst's prior revisions, and market capitalization of the company.

Overview

Exchange	New York Stock Exchange	5 Year Growth	13.61
52 Week Range	33.74 - 40.00	5 Year Stability	67.49
Current PE	14.34	Annual Dividend	1.48
Beta	0.83	*All prices displayed in local currency	

Reported Quarters



	Current	Last Quarters	2 Quarters Ago	3 Quarters Ago	4 Quarters Ago
Estimate	0.56	0.30	0.35	1.28	0.77
Actual	-	0.46	0.25	1.41	0.85
Surprise%	-	53.33	-28.77	9.98	10.97
Surprise \$ Amt	-	0.16	-0.10	0.13	0.08

Consensus EPS Estimates						
Period	Report Date	# of Estimates	Mean	High	Low	Median
Q1	Dec 06	8	0.56	0.67	0.52	0.54
Q2	Mar 07	4	1.31	1.43	1.20	1.30
Q3	Jun 07	4	0.38	0.41	0.35	0.39
Q4	Sep 07	4	0.32	0.39	0.25	0.32
FY1	Dec 06	10	2.64	2.68	2.57	2.65
FY2	Dec 07	11	2.70	2.83	2.54	2.70
LTG	-	6	4.21	5.00	3.00	4.13

Earnings Momentum				
	12/2006	03/2007	06/2007	09/2007
# Estimates Up/Down - 1 Week	0/ 0	0/ 0	0/ 0	0/ 0
# Estimates Up/Down - 1 Month	2/ 5	2/ 1	2/ 0	2/ 1
Current Mean Estimate	0.56	1.31	0.38	0.32
Mean 1 Month Ago	0.66	1.31	0.35	0.31
Mean 3 Months Ago	0.70	1.31	0.37	0.31

Data Provided by First Call/Thomson Financial

[Top](#)

Data Provided by Thomson
© Copyright 2006 Thomson



No Life Insurance?
It Could Cost Your Family A Fortune!

10-Yr Level Term Life Insurance \$500,000 Policy (monthly premiums)	age	male
	35	\$16.97
	40	\$21.75
	45	\$34.80
	50	\$50.90

Get a **FREE QUOTE**
[CLICK HERE](#)

AccuQUOTE
Saving You Money For Life

[HELP](#)

Earnings Center > Company Earnings

[Earnings Estimates](#) | [Broker Recommendation](#) | [Forecasts](#) | [Earnings Snapshots](#) | [Performance Following a Surprise](#) | [Peer and Industry Comparisons](#)

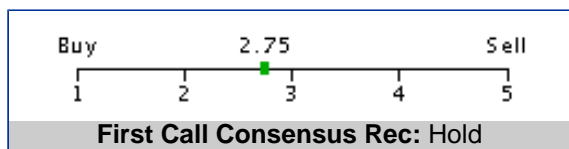
▶ Earnings Estimates

ATMOS ENERGY CORPORATION (ATO)

Sector: Public Utilities

Industry: Gas Utilities

Last Updated: November 11, 2006



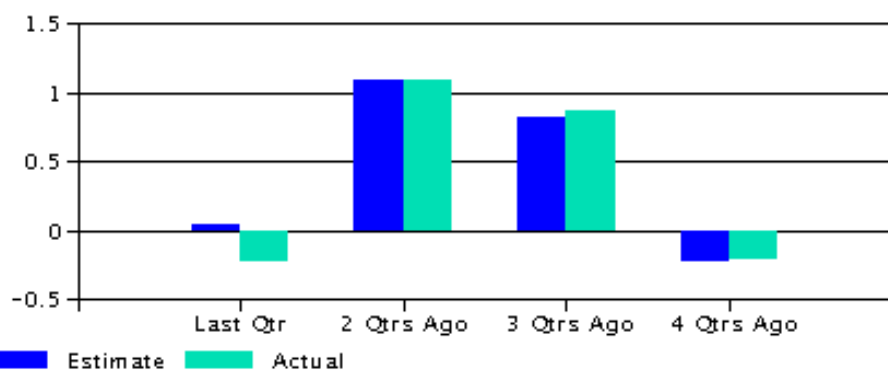
The Analyst Company Sentiment is NEUTRAL

Analyst Sentiment is determined by a quantitative company scoring model that scores company level sentiment based on analyst earnings revisions. The scoring model considers the following factors: analyst experience, magnitude of the revision, proximity of the revision to the actual earnings report date, range of estimates, historic stock performance following a given analyst's prior revisions, and market capitalization of the company.

Overview

Exchange	New York Stock Exchange	5 Year Growth	5.60
52 Week Range	25.55 - 31.79	5 Year Stability	159.12
Current PE	17.53	Annual Dividend	1.28
Beta	0.75	*All prices displayed in local currency	

Reported Quarters



	Last Current	Last Quarters	2 Quarters Ago	3 Quarters Ago	4 Quarters Ago
Estimate	0.06	0.04	1.09	0.82	-0.23
Actual	-	-0.22	1.10	0.88	-0.21
Surprise%	-	-711.11	0.55	7.58	-10.26
Surprise \$ Amt	-	-0.26	0.01	0.06	0.02

FXCM
Currency Trading

EXpo

Over **50 FREE**
Workshops on
Currency Trading



LAS VEGAS,
DEC. 9-10.2006

REGISTER NOW!

FXCM

WWW.FXCMEXPO.COM

Consensus EPS Estimates						
Period	Report Date	# of Estimates	Mean	High	Low	Median
Q1	Sep 06	4	0.06	0.07	0.04	0.06
Q2	Dec 06	5	0.92	0.99	0.88	0.92
Q3	Mar 07	5	1.13	1.25	1.03	1.13
Q4	Jun 07	5	0.01	0.08	-0.09	0.01
FY1	Sep 06	5	1.82	1.83	1.80	1.82
FY2	Sep 07	8	1.96	2.03	1.90	1.96
LTG	-	3	5.17	7.00	3.00	5.50

Earnings Momentum				
	09/2006	12/2006	03/2007	06/2007
# Estimates Up/Down - 1 Week	0/ 0	0/ 0	0/ 1	0/ 1
# Estimates Up/Down - 1 Month	0/ 0	0/ 0	0/ 1	0/ 1
Current Mean Estimate	0.06	0.92	1.13	0.01
Mean 1 Month Ago	0.00	0.92	1.14	0.06
Mean 3 Months Ago	-0.17	0.89	1.15	0.07

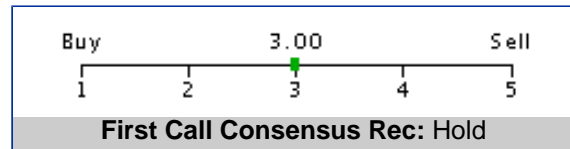
Data Provided by First Call/Thomson Financial

[Top](#)

Data Provided by Thomson
© Copyright 2006 Thomson

Earnings Center > Company Earnings

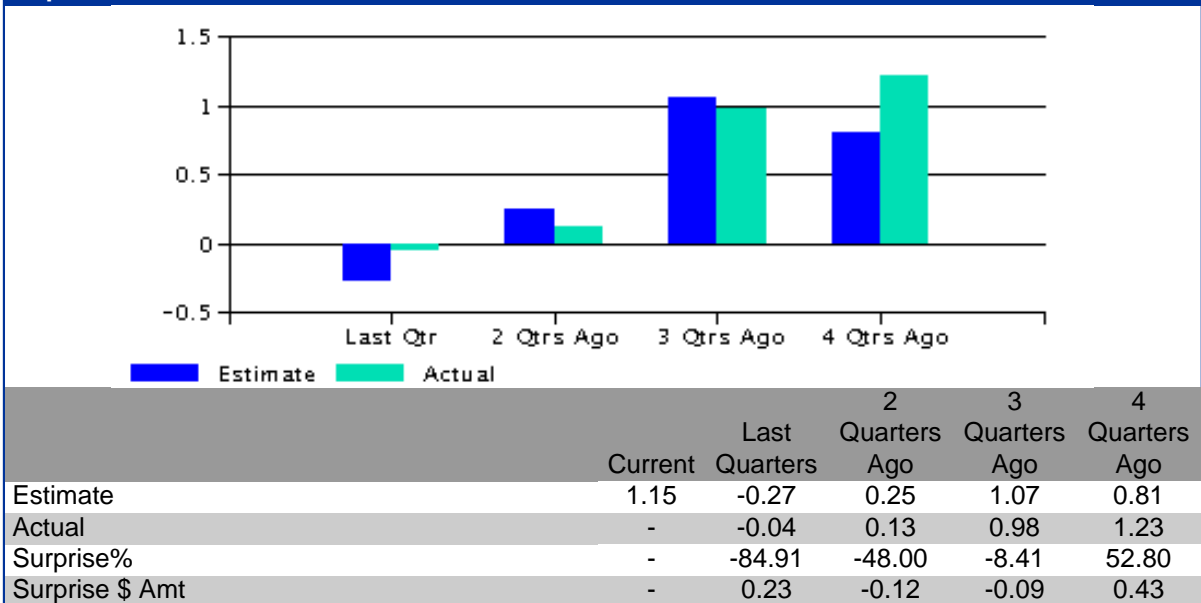
[Earnings Estimates](#) | [Broker Recommendation](#) | [Forecasts](#) | [Earnings Snapshots](#) | [Performance Following a Surprise](#) | [Peer and Industry Comparisons](#)

Earnings Estimates**LACLEDE GROUP INC (LG)****Sector:** Public Utilities**Industry:** Gas Utilities**Last Updated:** November 11, 2006**The Analyst Company Sentiment is NEUTRAL**

Analyst Sentiment is determined by a quantitative company scoring model that scores company level sentiment based on analyst earnings revisions. The scoring model considers the following factors: analyst experience, magnitude of the revision, proximity of the revision to the actual earnings report date, range of estimates, historic stock performance following a given analyst's prior revisions, and market capitalization of the company.

Overview

Exchange	New York Stock Exchange	5 Year Growth	-5.96
52 Week Range	28.84 - 36.74	5 Year Stability	102.76
Current PE	16.77	Annual Dividend	1.42
Beta	1.09	*All prices displayed in local currency	

Reported Quarters

Consensus EPS Estimates						
Period	Report Date	# of Estimates	Mean	High	Low	Median
Q1	Dec 06	1	1.15	1.15	1.15	1.15
Q2	Mar 07	1	1.00	1.00	1.00	1.00
Q3	Jun 07	1	0.15	0.15	0.15	0.15
Q4	Sep 07	1	-0.20	-0.20	-0.20	-0.20
FY1	Sep 07	2	2.13	2.15	2.10	2.13
-						

Earnings Momentum				
	12/2006	03/2007	06/2007	09/2007
# Estimates Up/Down - 1 Week	0/ 0	0/ 0	0/ 0	0/ 0
# Estimates Up/Down - 1 Month	0/ 0	0/ 0	0/ 0	0/ 0
Current Mean Estimate	1.15	1.00	0.15	-0.20
Mean 1 Month Ago	1.15	1.00	0.15	-0.20
Mean 3 Months Ago	1.00	1.10	0.27	-0.27

Data Provided by First Call/Thomson Financial

[Top](#)

Data Provided by Thomson
© Copyright 2006 Thomson

Earnings Center > Company Earnings

Earnings Estimates | [Broker Recommendation](#) | [Forecasts](#) | [Earnings Snapshots](#) | [Performance Following a Surprise](#) | [Peer and Industry Comparisons](#)

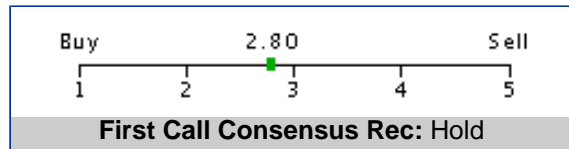
► **Earnings Estimates**

NEW JERSEY RESOURCES CORP (NJR)

Sector: Public Utilities

Industry: Gas Utilities

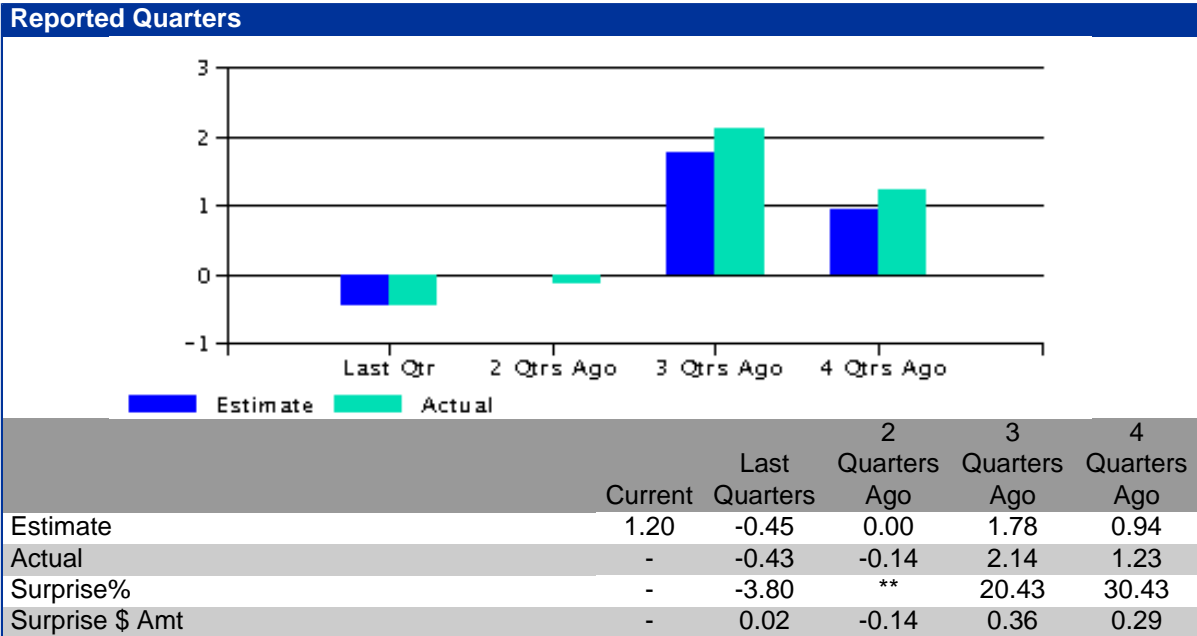
Last Updated: November 11, 2006



The Analyst Company Sentiment is NO RATING

Analyst Sentiment is determined by a quantitative company scoring model that scores company level sentiment based on analyst earnings revisions. The scoring model considers the following factors: analyst experience, magnitude of the revision, proximity of the revision to the actual earnings report date, range of estimates, historic stock performance following a given analyst's prior revisions, and market capitalization of the company.

Overview			
Exchange	New York Stock Exchange	5 Year Growth	16.45
52 Week Range	41.49 - 52.62	5 Year Stability	202.11
Current PE	17.68	Annual Dividend	1.52
Beta	0.81	*All prices displayed in local currency	



ADVERTISEMENT

A 21-Year-Old Cash Machine

Last year, one company teamed up with Microsoft, Apple, Hewlett-Packard, Sony, IBM, and Cisco and raked in nearly \$6 billion.

So why is this great business, with \$600 million cash, no debt, and stunning returns on equity, assets, and capital still off Wall Street's radar?

Find out in "The Motley Fool's 2 Top Picks – Plus, Wall Street's Dirtiest Secret."

[Click here to claim your report. It's FREE! ►](#)

A trusted service from **The Motley Fool.**

Consensus EPS Estimates						
Period	Report Date	# of Estimates	Mean	High	Low	Median
Q1	Dec 06	2	1.20	1.25	1.15	1.20
Q2	Mar 07	2	2.09	2.18	2.00	2.09
Q3	Jun 07	2	-0.06	0.00	-0.12	-0.06
Q4	Sep 07	2	-0.36	-0.30	-0.41	-0.36
FY1	Sep 07	5	2.89	2.91	2.85	2.90
FY2	Sep 08	3	2.97	2.99	2.95	2.97
LTG	-	4	5.25	7.00	4.00	5.00

Earnings Momentum				
	12/2006	03/2007	06/2007	09/2007
# Estimates Up/Down - 1 Week	0/ 0	0/ 0	0/ 0	0/ 0
# Estimates Up/Down - 1 Month	0/ 0	1/ 0	0/ 1	1/ 0
Current Mean Estimate	1.20	2.09	-0.06	-0.36
Mean 1 Month Ago	1.20	2.08	0.00	-0.40
Mean 3 Months Ago	1.20	2.08	0.00	-0.43

Data Provided by First Call/Thomson Financial

[Top](#)

Data Provided by Thomson
© Copyright 2006 Thomson

Earnings Center > Company Earnings

[Earnings Estimates](#) | [Broker Recommendation](#) | [Forecasts](#) | [Earnings Snapshots](#) | [Performance Following a Surprise](#) | [Peer and Industry Comparisons](#)

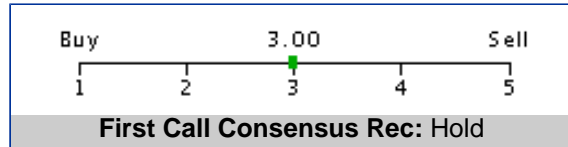
► Earnings Estimates

NICOR INC (GAS)

Sector: Public Utilities

Industry: Gas Utilities

Last Updated: November 11, 2006



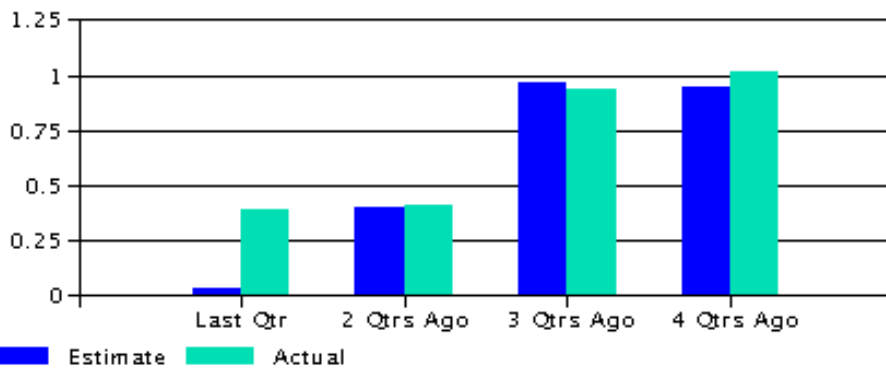
The Analyst Company Sentiment is **NEGATIVE**

Analyst Sentiment is determined by a quantitative company scoring model that scores company level sentiment based on analyst earnings revisions. The scoring model considers the following factors: analyst experience, magnitude of the revision, proximity of the revision to the actual earnings report date, range of estimates, historic stock performance following a given analyst's prior revisions, and market capitalization of the company.

Overview

Exchange	New York Stock Exchange	5 Year Growth	-3.44
52 Week Range	38.72 - 48.79	5 Year Stability	48.96
Current PE	18.43	Annual Dividend	1.86
Beta	0.75	*All prices displayed in local currency	

Reported Quarters



	Current	Last Quarters	2 Quarters Ago	3 Quarters Ago	4 Quarters Ago
Estimate	1.06	0.03	0.40	0.97	0.95
Actual	-	0.39	0.41	0.94	1.02
Surprise%	-	1460.00	3.02	-2.59	7.59
Surprise \$ Amt	-	0.37	0.01	-0.03	0.07

Consensus EPS Estimates						
Period	Report Date	# of Estimates	Mean	High	Low	Median
Q1	Dec 06	4	1.06	1.20	0.95	1.04
Q2	Mar 07	1	0.97	0.97	0.97	0.97
Q3	Jun 07	1	0.43	0.43	0.43	0.43
Q4	Sep 07	1	-0.05	-0.05	-0.05	-0.05
FY1	Dec 06	4	2.62	2.72	2.40	2.67
FY2	Dec 07	5	2.62	2.75	2.36	2.75
LTG	-	3	2.67	3.50	1.50	3.00

Earnings Momentum				
	12/2006	03/2007	06/2007	09/2007
# Estimates Up/Down - 1 Week	0/ 0	0/ 0	0/ 0	0/ 0
# Estimates Up/Down - 1 Month	1/ 1	0/ 0	0/ 0	0/ 0
Current Mean Estimate	1.06	0.97	0.43	-0.05
Mean 1 Month Ago	1.10	0.97	0.43	-0.05
Mean 3 Months Ago	1.11	0.99	0.40	-0.09

Data Provided by First Call/Thomson Financial

[Top](#)

Data Provided by Thomson
© Copyright 2006 Thomson



No Life Insurance?

It Could Cost Your Family A Fortune!

10-Yr Level Term Life Insurance	age	male
\$500,000 Policy	35	\$16.97
(monthly premiums)	40	\$21.75
	45	\$34.80
	50	\$50.90

Get a FREE QUOTE
CLICK HERE

AccuQUOTE
Saving You Money For Life

[HELP](#)

Earnings Center > Company Earnings

[Earnings Estimates](#) | [Broker Recommendation](#) | [Forecasts](#) | [Earnings Snapshots](#) | [Performance Following a Surprise](#) | [Peer and Industry Comparisons](#)

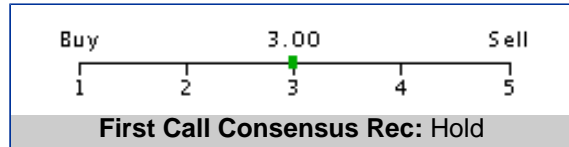
► **Earnings Estimates**

NORTHWEST NAT GAS CO (NWN)

Sector: Public Utilities

Industry: Gas Utilities

Last Updated: November 11, 2006

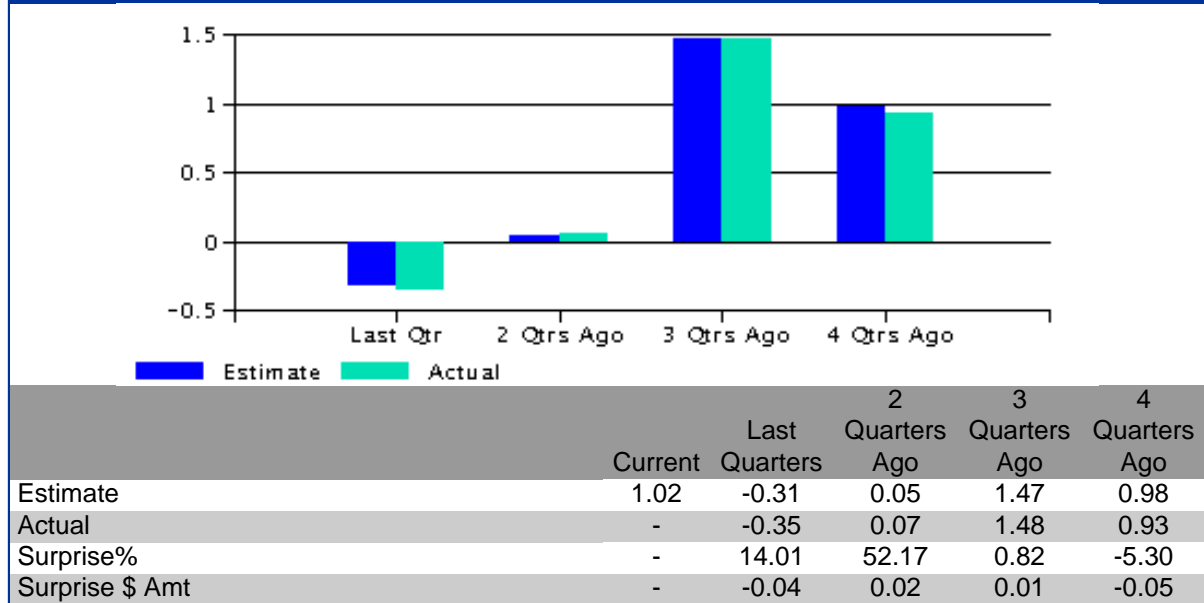


The Analyst Company Sentiment is POSITIVE

Analyst Sentiment is determined by a quantitative company scoring model that scores company level sentiment based on analyst earnings revisions. The scoring model considers the following factors: analyst experience, magnitude of the revision, proximity of the revision to the actual earnings report date, range of estimates, historic stock performance following a given analyst's prior revisions, and market capitalization of the company.

Overview			
Exchange	New York Stock Exchange	5 Year Growth	-14.74
52 Week Range	32.83 - 41.94	5 Year Stability	172.70
Current PE	18.03	Annual Dividend	1.42
Beta	0.92	*All prices displayed in local currency	

Reported Quarters




Scottrade
Member SIPC

\$7 Online Stock Trades and Fast Trade Executions

CLICK HERE

Scottrade #1

Consensus EPS Estimates						
Period	Report Date	# of Estimates	Mean	High	Low	Median
Q1	Dec 06	5	1.02	1.05	0.97	1.04
Q2	Mar 07	4	1.53	1.58	1.50	1.52
Q3	Jun 07	4	0.07	0.09	0.06	0.07
Q4	Sep 07	4	-0.30	-0.28	-0.30	-0.30
FY1	Dec 06	7	2.21	2.26	2.15	2.24
FY2	Dec 07	5	2.37	2.39	2.35	2.37
LTG	-	4	4.88	6.00	3.50	5.00

Earnings Momentum				
	12/2006	03/2007	06/2007	09/2007
# Estimates Up/Down - 1 Week	1/ 1	1/ 1	0/ 0	1/ 1
# Estimates Up/Down - 1 Month	1/ 1	1/ 1	0/ 0	1/ 1
Current Mean Estimate	1.02	1.53	0.07	-0.30
Mean 1 Month Ago	1.02	1.53	0.07	-0.30
Mean 3 Months Ago	1.03	1.53	0.07	-0.29

Data Provided by First Call/Thomson Financial

[Top](#)

Data Provided by Thomson
© Copyright 2006 Thomson

Earnings Center > Company Earnings

[Earnings Estimates](#) | [Broker Recommendation](#) | [Forecasts](#) | [Earnings Snapshots](#) | [Performance Following a Surprise](#) | [Peer and Industry Comparisons](#)

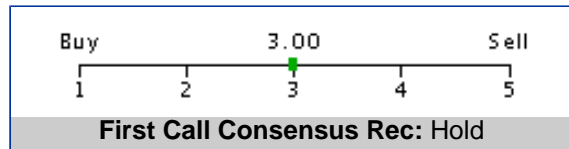
► **Earnings Estimates**

PIEDMONT NATURAL GAS CO (PNY)

Sector: Public Utilities

Industry: Gas Utilities

Last Updated: November 11, 2006



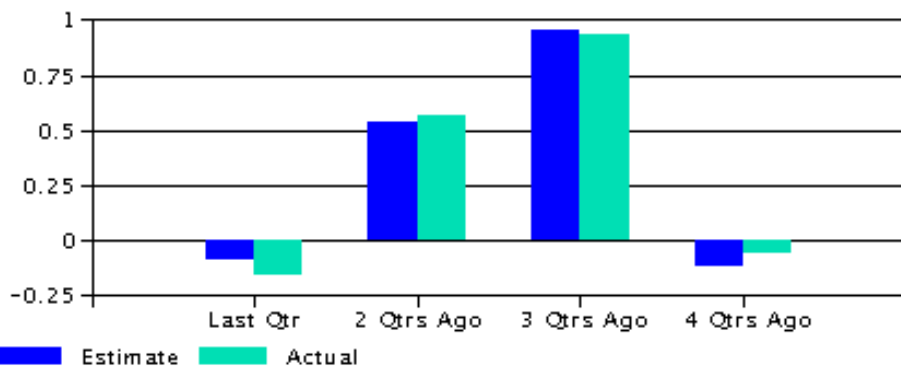
The Analyst Company Sentiment is NEUTRAL

Analyst Sentiment is determined by a quantitative company scoring model that scores company level sentiment based on analyst earnings revisions. The scoring model considers the following factors: analyst experience, magnitude of the revision, proximity of the revision to the actual earnings report date, range of estimates, historic stock performance following a given analyst's prior revisions, and market capitalization of the company.

Overview

Exchange	New York Stock Exchange	5 Year Growth	8.01
52 Week Range	22.01 - 27.27	5 Year Stability	4.29
Current PE	20.83	Annual Dividend	0.96
Beta	0.81	*All prices displayed in local currency	

Reported Quarters



	Current	Last Quarters	2 Quarters Ago	3 Quarters Ago	4 Quarters Ago
Estimate	-0.08	-0.09	0.54	0.96	-0.12
Actual	-	-0.16	0.57	0.94	-0.06
Surprise%	-	79.78	5.56	-2.39	-47.83
Surprise \$ Amt	-	-0.07	0.03	-0.02	0.06

Scottrade
Member SIPC

\$7 Online Stock Trades and Fast Trade Executions

[CLICK HERE](#)

Consensus EPS Estimates						
Period	Report Date	# of Estimates	Mean	High	Low	Median
Q1	Oct 06	7	-0.08	-0.05	-0.10	-0.10
Q2	Jan 07	3	0.97	0.98	0.97	0.97
Q3	Apr 07	3	0.59	0.61	0.58	0.59
Q4	Jul 07	3	-0.08	-0.07	-0.08	-0.08
FY1	Oct 06	5	1.29	1.30	1.25	1.30
FY2	Oct 07	8	1.42	1.45	1.38	1.42
LTG	-	2	4.00	4.00	4.00	4.00

Earnings Momentum				
	10/2006	01/2007	04/2007	07/2007
# Estimates Up/Down - 1 Week	0/ 0	0/ 0	0/ 0	0/ 0
# Estimates Up/Down - 1 Month	0/ 0	0/ 0	0/ 0	0/ 0
Current Mean Estimate	-0.08	0.97	0.59	-0.08
Mean 1 Month Ago	-0.08	0.97	0.59	-0.08
Mean 3 Months Ago	-0.11	0.98	0.59	-0.08

Data Provided by First Call/Thomson Financial

[Top](#)

Data Provided by Thomson
© Copyright 2006 Thomson

Earnings Center > Company Earnings

[Earnings Estimates](#) | [Broker Recommendation](#) | [Forecasts](#) | [Earnings Snapshots](#) | [Performance Following a Surprise](#) | [Peer and Industry Comparisons](#)

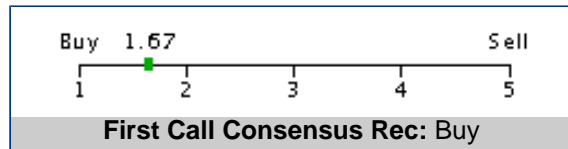
► Earnings Estimates

SOUTH JERSEY INDUSTRIES (SJI)

Sector: Public Utilities

Industry: Gas Utilities

Last Updated: November 11, 2006



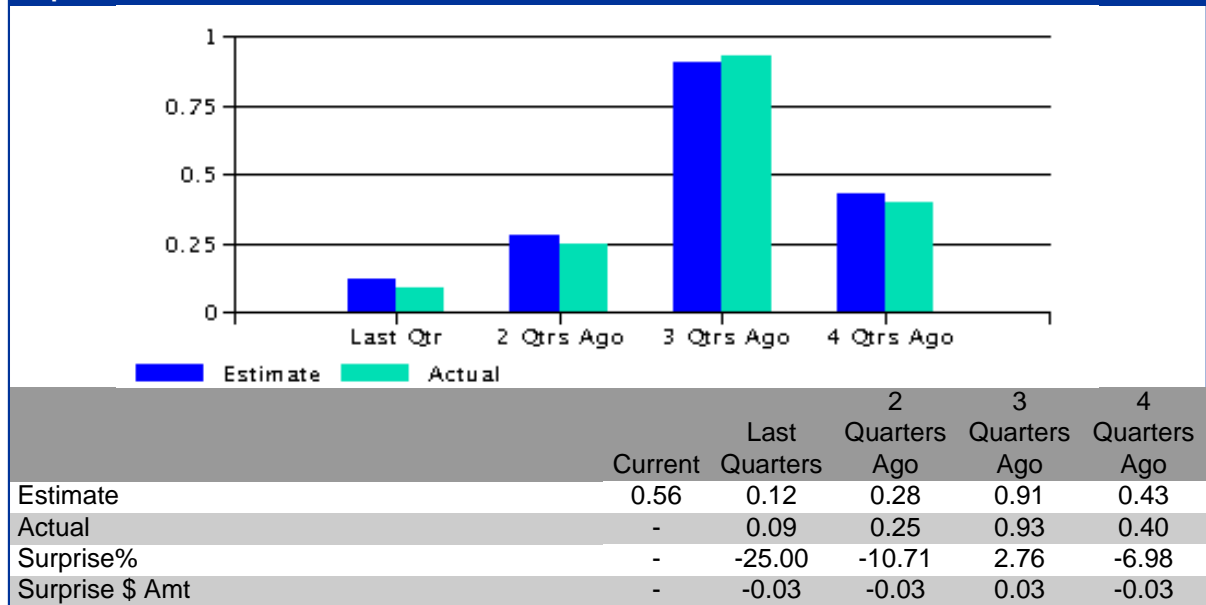
The Analyst Company Sentiment is **POSITIVE**

Analyst Sentiment is determined by a quantitative company scoring model that scores company level sentiment based on analyst earnings revisions. The scoring model considers the following factors: analyst experience, magnitude of the revision, proximity of the revision to the actual earnings report date, range of estimates, historic stock performance following a given analyst's prior revisions, and market capitalization of the company.

Overview

Exchange	New York Stock Exchange	5 Year Growth	3.03
52 Week Range	25.63 - 31.94	5 Year Stability	213.15
Current PE	17.29	Annual Dividend	0.90
Beta	1.25	*All prices displayed in local currency	

Reported Quarters



Consensus EPS Estimates						
Period	Report Date	# of Estimates	Mean	High	Low	Median
Q1	Dec 06	2	0.56	0.58	0.53	0.56
Q2	Mar 07	2	0.98	0.98	0.98	0.98
Q3	Jun 07	2	0.28	0.29	0.27	0.28
Q4	Sep 07	2	0.13	0.13	0.12	0.13
FY1	Dec 06	3	1.83	1.85	1.82	1.83
FY2	Dec 07	3	1.97	1.98	1.95	1.97
LTG	-	3	6.00	6.00	6.00	6.00

Earnings Momentum				
	12/2006	03/2007	06/2007	09/2007
# Estimates Up/Down - 1 Week	1/ 0	0/ 0	0/ 1	0/ 1
# Estimates Up/Down - 1 Month	1/ 0	0/ 0	0/ 1	0/ 1
Current Mean Estimate	0.56	0.98	0.28	0.13
Mean 1 Month Ago	0.54	0.98	0.29	0.13
Mean 3 Months Ago	0.54	0.98	0.29	0.13

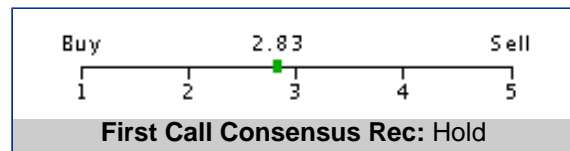
Data Provided by First Call/Thomson Financial

[Top](#)

Data Provided by Thomson
© Copyright 2006 Thomson

Earnings Center > Company Earnings

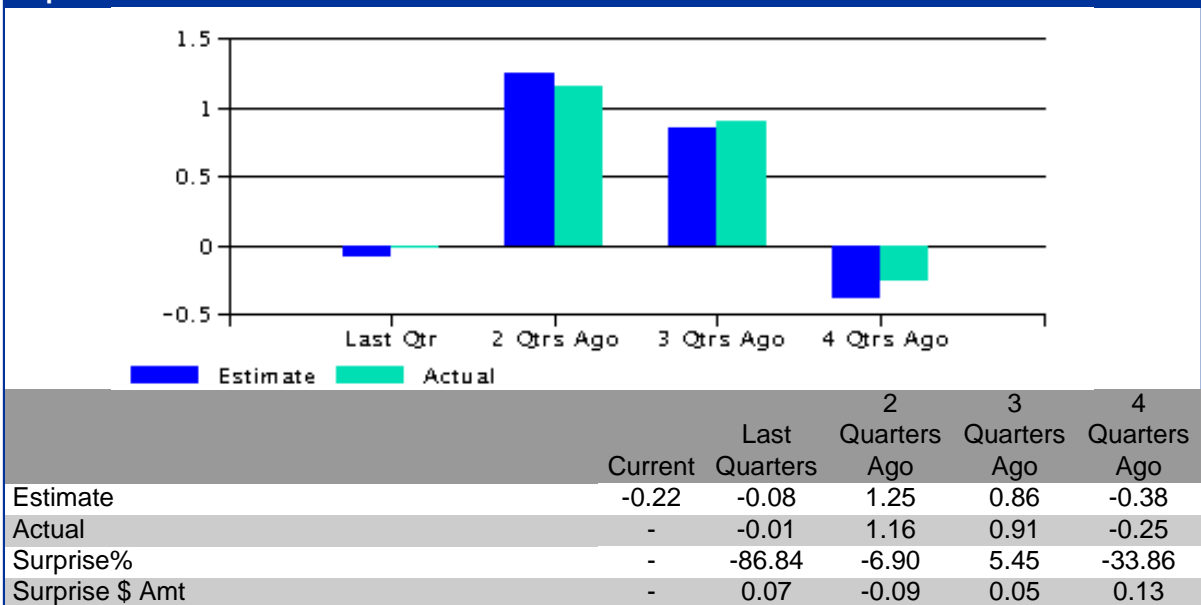
[Earnings Estimates](#) | [Broker Recommendation](#) | [Forecasts](#) | [Earnings Snapshots](#) | [Performance Following a Surprise](#) | [Peer and Industry Comparisons](#)

▶ Earnings Estimates**WGL HOLDING INC (WGL)****Sector:** Public Utilities**Industry:** Gas Utilities**Last Updated:** November 11, 2006**The Analyst Company Sentiment is POSITIVE**

Analyst Sentiment is determined by a quantitative company scoring model that scores company level sentiment based on analyst earnings revisions. The scoring model considers the following factors: analyst experience, magnitude of the revision, proximity of the revision to the actual earnings report date, range of estimates, historic stock performance following a given analyst's prior revisions, and market capitalization of the company.

Overview

Exchange	New York Stock Exchange	5 Year Growth	2.76
52 Week Range	27.04 - 33.02	5 Year Stability	16.95
Current PE	17.48	Annual Dividend	1.35
Beta	0.93	*All prices displayed in local currency	

Reported Quarters

Consensus EPS Estimates						
Period	Report Date	# of Estimates	Mean	High	Low	Median
Q1	Sep 06	6	-0.22	-0.19	-0.26	-0.22
Q2	Dec 06	2	0.94	0.95	0.93	0.94
Q3	Mar 07	2	1.21	1.21	1.20	1.21
Q4	Jun 07	2	-0.02	-0.02	-0.02	-0.02
FY1	Sep 06	5	1.84	1.88	1.80	1.85
FY2	Sep 07	5	1.94	1.98	1.90	1.93
LTG	-	4	3.50	4.00	3.00	3.50

Earnings Momentum				
	09/2006	12/2006	03/2007	06/2007
# Estimates Up/Down - 1 Week	0/ 0	0/ 0	0/ 0	0/ 0
# Estimates Up/Down - 1 Month	0/ 0	0/ 0	0/ 0	0/ 0
Current Mean Estimate	-0.22	0.94	1.21	-0.02
Mean 1 Month Ago	-0.22	0.94	1.21	-0.02
Mean 3 Months Ago	-0.22	0.93	1.22	-0.06

Data Provided by First Call/Thomson Financial

[Top](#)

Data Provided by Thomson
© Copyright 2006 Thomson



Zacks.com Quotes and Research

AGL RES INC (NYSE)

Scottrade S7 Online Stock Trades

ATG 37.93 ▲0.02 (0.05%) Vol. 107,900

10:53 CST

AGL Resources principal business is the distribution of natural gas to customers in central, northwest, northeast and southeast Georgia and the Chattanooga, Tennessee area through its natural gas distribution subsidiary. AGL's major service area is the ten county metropolitan Atlanta area.

General Information

AGL RESOURCES

Ten Peachtree Place NE

Atlanta, GA 30309

Phone: 404 584-4000

Fax: 404 584-3580

Web: www.aglresources.comEmail: scave@aglresources.com

Industry UTIL-GAS DISTR
Sector Utilities

Fiscal Year End December
Last Reported 09/30/06
Quarter
Next EPS Date 01/25/2007

Price and Volume Information

Zacks Rank **P**
Yesterday's Close 37.91
52 Week High 39.70
52 Week Low 33.75
Beta 0.38
20 Day Moving Average 427,270.00
Target Price 40.38
Consensus



% Price Change		% Price Change Relative to S&P 500	
4 Week	1.72	4 Week	0.59
12 Week	6.46	12 Week	-0.22
YTD	8.82	YTD	-1.97

Share Information

Shares Outstanding (millions) 77.88
Market Capitalization (millions) 2,950.06
Short Ratio 5.85
Last Split Date 12/04/1995

Dividend Information

Dividend Yield 3.91%
Annual Dividend \$1.48
Payout Ratio 0.50
Change in Payout Ratio 0.00
Last Dividend Payout / Amount 08/16/2006 / \$0.37

EPS Information

Current Quarter EPS Consensus Estimate 0.61
Current Year EPS Consensus Estimate 2.66
Estimated Long-Term EPS Growth Rate 4.50
Next EPS Report Date 01/25/2007

Consensus Recommendations

Current (1=Strong Buy, 5=Strong Sell) 2.38
30 Days Ago 2.38
60 Days Ago 2.38
90 Days Ago 2.38

Fundamental Ratios

P/E		EPS Growth		Sales Growth	
Current FY Estimate:	14.25	vs. Previous Year	142.11%	vs. Previous Year	10.43%
Trailing 12 Months:	12.75	vs. Previous Quarter	84.00%	vs. Previous Quarter:	-0.46%
PEG Ratio	3.17				
Price Ratios		ROE		ROA	
Price/Book	1.87	09/30/06	14.81	09/30/06	3.91
Price/Cash Flow	9.02	06/30/06	13.75	06/30/06	3.52
Price / Sales	1.01	03/31/06	14.35	03/31/06	3.66
Current Ratio		Quick Ratio		Operating Margin	
09/30/06	1.15	09/30/06	0.67	09/30/06	7.94
06/30/06	1.12	06/30/06	0.64	06/30/06	7.32
03/31/06	1.00	03/31/06	0.70	03/31/06	7.51
Net Margin		Pre-Tax Margin		Book Value	
09/30/06	12.72	09/30/06	12.72	09/30/06	20.30
06/30/06	11.75	06/30/06	11.75	06/30/06	20.18
03/31/06	12.01	03/31/06	12.01	03/31/06	20.33
Inventory Turnover		Debt-to-Equity		Debt to Capital	
09/30/06	3.07	09/30/06	1.03	09/30/06	51.38
06/30/06	3.23	06/30/06	1.04	06/30/06	51.44
03/31/06	3.65	03/31/06	0.92	03/31/06	48.47



Zacks.com Quotes and Research

ATMOS ENERGY CORP (NYSE)

Scottrade S7 Online Stock Trades

ATO 32.61 ▲0.03 (0.09%) Vol. 45,300

10:51 CST

Atmos Energy Corporation distributes and sells natural gas to residential, commercial, industrial, agricultural and other customers. Atmos operates through five divisions in cities, towns and communities in service areas located in Colorado, Georgia, Illinois, Iowa, Kansas, Kentucky, Louisiana, Missouri, South Carolina, Tennessee, Texas and Virginia. The Company has entered into an agreement to sell all of its natural gas utility operations in South Carolina. The Company also transports natural gas for others through its distribution system.

General Information

ATMOS ENERGY CP

Three Lincoln Centre, 5430 Lbj Freeway

Suite 1800

Dallas, TX 75240

Phone: 972 934-9227

Fax: -

Web: www.atmosenergy.comEmail: InvestorRelations@atmosenergy.com

Industry UTIL-GAS DISTR

Sector: Utilities

Fiscal Year End September

Last Reported 09/30/06

Quarter

Next EPS Date 02/06/2007

Price and Volume Information

Zacks Rank	P
Yesterday's Close	32.58
52 Week High	32.08
52 Week Low	25.92
Beta	0.33
20 Day Moving Average	220,000.00
Target Price	33.3
Consensus	



% Price Change		% Price Change Relative to S&P 500	
4 Week	7.94	4 Week	6.74
12 Week	11.39	12 Week	4.40
YTD	22.63	YTD	9.68

Share Information

Shares Outstanding (millions)	81.60
Market Capitalization (millions)	2,617.60
Short Ratio	6.75
Last Split Date	05/17/1994

Dividend Information

Dividend Yield	3.93%
Annual Dividend	\$1.26
Payout Ratio	0.56
Change in Payout Ratio	0.00
Last Dividend Payout / Amount	08/23/2006 / \$0.31

EPS Information

Current Quarter EPS Consensus Estimate	0.94
Current Year EPS Consensus Estimate	1.96
Estimated Long-Term EPS Growth Rate	5.50
Next EPS Report Date	02/06/2007

Consensus Recommendations

Current (1=Strong Buy, 5=Strong Sell)	2.57
30 Days Ago	2.57
60 Days Ago	2.50
90 Days Ago	2.50

Fundamental Ratios

P/E		EPS Growth		Sales Growth	
Current FY Estimate:	16.38	vs. Previous Year	219.05%	vs. Previous Year	-3.30%
Trailing 12 Months:	14.13	vs. Previous Quarter	525.00%	vs. Previous Quarter:	12.54%
PEG Ratio	2.98				
Price Ratios		ROE		ROA	
Price/Book	1.56	09/30/06	11.00	09/30/06	3.02
Price/Cash Flow	8.22	06/30/06	8.84	06/30/06	2.45
Price / Sales	0.43	03/31/06	8.99	03/31/06	2.53
Current Ratio		Quick Ratio		Operating Margin	
09/30/06	-	09/30/06	-	09/30/06	2.98
06/30/06	1.03	06/30/06	0.60	06/30/06	2.36
03/31/06	1.10	03/31/06	0.78	03/31/06	2.37
Net Margin		Pre-Tax Margin		Book Value	
09/30/06	-	09/30/06	-	09/30/06	-
06/30/06	3.25	06/30/06	3.25	06/30/06	20.51
03/31/06	3.82	03/31/06	3.82	03/31/06	21.08
Inventory Turnover		Debt-to-Equity		Debt to Capital	
09/30/06	-	09/30/06	-	09/30/06	-
06/30/06	10.53	06/30/06	1.31	06/30/06	56.71
03/31/06	11.18	03/31/06	1.28	03/31/06	56.11



Zacks.com Quotes and Research

LACLEDE GROUP INC (NYSE)

Scottrade S7 Online Stock Trades

LG 37.01 ▲ **0.06** (0.16%) Vol. 9,000

10:53 CST

The Laclede Group, Inc. is a public utility engaged in the retail distribution and transportation of natural gas. The Company, which is subject to the jurisdiction of the Missouri Public Service Commission, serves the City of St. Louis, St. Louis County, the City of St. Charles, St. Charles County, the town of Arnold, and parts of Franklin, Jefferson, St. Francois, Ste. Genevieve, Iron, Madison and Butler Counties, all in Missouri.

General Information

LACLEDE GRP INC

720 Olive Street

St. Louis, MO 63101

Phone: 314-342-0500

Fax: -

Web: www.thelacledgroup.comEmail: investorservices@lacledegas.com

Industry UTIL-GAS DISTR

Sector: Utilities

Fiscal Year End September

Last Reported 09/30/06

Quarter

Next EPS Date 01/25/2007

Price and Volume Information

Zacks Rank	P
Yesterday's Close	36.95
52 Week High	36.30
52 Week Low	29.02
Beta	0.48
20 Day Moving Average	79,160.00
Target Price	N/A
Consensus	



% Price Change		% Price Change Relative to S&P 500	
4 Week	7.61	4 Week	6.41
12 Week	12.90	12 Week	5.81
YTD	23.49	YTD	11.75

Share Information

Shares Outstanding (millions)	21.36
Market Capitalization (millions)	770.35
Short Ratio	17.04
Last Split Date	03/08/1994

Dividend Information

Dividend Yield	3.94%
Annual Dividend	\$1.42
Payout Ratio	0.60
Change in Payout Ratio	0.00
Last Dividend Payout / Amount	09/07/2006 / \$0.35

EPS Information

Current Quarter EPS Consensus Estimate	N/A
Current Year EPS Consensus Estimate	2.13
Estimated Long-Term EPS Growth Rate	-
Next EPS Report Date	01/25/2007

Consensus Recommendations

Current (1=Strong Buy, 5=Strong Sell)	3.00
30 Days Ago	3.00
60 Days Ago	3.00
90 Days Ago	3.00

Fundamental Ratios

P/E		EPS Growth		Sales Growth	
Current FY Estimate:	16.91	vs. Previous Year	83.33%	vs. Previous Year	0.87%
Trailing 12 Months:	15.22	vs. Previous Quarter	-130.77%	vs. Previous Quarter:	-18.62%
PEG Ratio	-				
Price Ratios		ROE		ROA	
Price/Book	1.89	09/30/06	12.53	09/30/06	3.29
Price/Cash Flow	11.42	06/30/06	11.74	06/30/06	3.09
Price / Sales	0.39	03/31/06	12.78	03/31/06	3.43
Current Ratio		Quick Ratio		Operating Margin	
09/30/06	-	09/30/06	-	09/30/06	2.53
06/30/06	1.15	06/30/06	0.88	06/30/06	2.32
03/31/06	1.01	03/31/06	0.88	03/31/06	2.51
Net Margin		Pre-Tax Margin		Book Value	
09/30/06	-	09/30/06	-	09/30/06	-
06/30/06	3.34	06/30/06	3.34	06/30/06	19.08
03/31/06	3.63	03/31/06	3.63	03/31/06	19.28
Inventory Turnover		Debt-to-Equity		Debt to Capital	
09/30/06	-	09/30/06	-	09/30/06	-
06/30/06	13.28	06/30/06	0.97	06/30/06	49.24
03/31/06	13.19	03/31/06	0.83	03/31/06	45.30



Zacks.com Quotes and Research

NEW JERSEY RES (NYSE)

NJR 52.55 N/A (N/A%)

Vol. 24,200

Scottrade 57 Online Stock Trades

10:55 CST

NJ RESOURCES is an exempt energy svcs holding company providing retail & wholesale natural gas & related energy services to customers from the Gulf Coast to New England. Subsidiaries include: (1) N J Natural Gas Co, a natural gas distribution company that provides regulated energy & appliance services to residential, commercial & industrial customers in central & northern N J. (2) NJR Energy Holdings Corp formerly NJR Energy Svcs Corp & (3) NJR Development Corp, a sub-holding company of NJR, which includes the Company's remaining unregulated operating subsidiaries.

General Information

NJ RESOURCES

1415 Wyckoff Road

Wall, NJ 07719

Phone: 732 938-1480

Fax: -

Web: www2.njresources.comEmail: investcont@njresources.com

Industry UTIL-GAS DISTR
Sector: Utilities

Fiscal Year End September

Last Reported 09/30/06

Quarter

Next EPS Date 02/05/2007

Price and Volume Information

Zacks Rank	P
Yesterday's Close	52.55
52 Week High	52.08
52 Week Low	41.77
Beta	0.06
20 Day Moving Average	121,415.00
Target Price Consensus	46.5



% Price Change		% Price Change Relative to S&P 500	
4 Week	1.70	4 Week	0.57
12 Week	5.57	12 Week	-1.05
YTD	22.53	YTD	11.50

Share Information

Shares Outstanding (millions)	28.08
Market Capitalization (millions)	1,441.35
Short Ratio	13.78
Last Split Date	03/04/2002

Dividend Information

Dividend Yield	2.81%
Annual Dividend	\$1.44
Payout Ratio	0.51
Change in Payout Ratio	0.00
Last Dividend Payout / Amount	09/13/2006 / \$0.36

EPS Information

Current Quarter EPS Consensus Estimate	1.20
Current Year EPS Consensus Estimate	2.89
Estimated Long-Term EPS Growth Rate	6.00
Next EPS Report Date	02/05/2007

Consensus Recommendations

Current (1=Strong Buy, 5=Strong Sell)	2.33
30 Days Ago	2.33
60 Days Ago	2.33
90 Days Ago	2.33

Fundamental Ratios

P/E		EPS Growth		Sales Growth	
Current FY Estimate:	17.78	vs. Previous Year	-152.94%	vs. Previous Year	-21.96%
Trailing 12 Months:	18.33	vs. Previous Quarter	-207.14%	vs. Previous Quarter:	-0.30%
PEG Ratio	2.96				
Price Ratios		ROE		ROA	
Price/Book	2.42	09/30/06	13.54	09/30/06	3.57
Price/Cash Flow	12.87	06/30/06	15.73	06/30/06	3.88
Price / Sales	0.44	03/31/06	17.41	03/31/06	4.28
Current Ratio		Quick Ratio		Operating Margin	
09/30/06	-	09/30/06	-	09/30/06	2.38
06/30/06	1.15	06/30/06	0.54	06/30/06	2.48
03/31/06	1.24	03/31/06	0.83	03/31/06	2.64
Net Margin		Pre-Tax Margin		Book Value	
09/30/06	-	09/30/06	-	09/30/06	-
06/30/06	3.97	06/30/06	3.97	06/30/06	21.25
03/31/06	4.23	03/31/06	4.23	03/31/06	22.36
Inventory Turnover		Debt-to-Equity		Debt to Captial	
09/30/06	-	09/30/06	-	09/30/06	-
06/30/06	12.61	06/30/06	0.56	06/30/06	35.92
03/31/06	16.01	03/31/06	0.54	03/31/06	35.13



Zacks.com Quotes and Research

NICOR INC (NYSE)

Scottrade S7 Online Stock Trades

GAS 49.36 ▲0.05 (0.10%) Vol. 51,200

10:57 CST

NICOR Inc. is a holding company. Its principal subsidiaries are Northern Illinois Gas Company, one of the nation's largest distributors of natural gas, and Tropical Shipping, one of the leading transporters of containerized freight in the Caribbean. Gas distribution is Nicor's primary business, representing the majority of consolidated operating income and assets. Nicor also owns several energy-related subsidiaries and is a partner in Nicor Energy, a provider of unregulated energy products and services.

General Information

NICOR INC

1844 Ferry Road
Naperville, IL 60563-9600
Phone: 630 305-9500
Fax: 630 983-9328
Web: www.nicor.com
Email: None

Industry UTIL-GAS DISTR
Sector Utilities

Fiscal Year End December
Last Reported 09/30/06
Quarter
Next EPS Date 02/23/2007

Price and Volume Information

Zacks Rank 
Yesterday's Close 49.31
52 Week High 48.68
52 Week Low 38.91
Beta 0.81
20 Day Moving Average 351,240.00
Target Price 44
Consensus

**% Price Change**

4 Week 9.37
12 Week 12.45
YTD 23.84

% Price Change Relative to S&P 500

4 Week 8.15
12 Week 5.39
YTD 11.41

Share Information

Shares Outstanding (millions) 44.54
Market Capitalization (millions) 2,168.06
Short Ratio 19.47
Last Split Date 04/27/1993

Dividend Information

Dividend Yield 3.82%
Annual Dividend \$1.86
Payout Ratio 0.70
Change in Payout Ratio 0.00
Last Dividend Payout / Amount 09/27/2006 / \$0.47

EPS Information

Current Quarter EPS Consensus Estimate 1.02
Current Year EPS Consensus Estimate 2.64
Estimated Long-Term EPS Growth Rate 2.50
Next EPS Report Date 02/23/2007

Consensus Recommendations

Current (1=Strong Buy, 5=Strong Sell) 3.00
30 Days Ago 3.00
60 Days Ago 3.00
90 Days Ago 3.00

Fundamental Ratios

P/E		EPS Growth		Sales Growth	
Current FY Estimate:	18.46	vs. Previous Year	566.67%	vs. Previous Year	4.49%
Trailing 12 Months:	18.37	vs. Previous Quarter	-31.71%	vs. Previous Quarter:	-22.20%
PEG Ratio	7.39				
Price Ratios		ROE		ROA	
Price/Book	2.62	09/30/06	14.21	09/30/06	2.95
Price/Cash Flow	7.86	06/30/06	12.56	06/30/06	2.55
Price / Sales	0.62	03/31/06	12.36	03/31/06	2.49
Current Ratio		Quick Ratio		Operating Margin	
09/30/06	0.69	09/30/06	0.49	09/30/06	3.38
06/30/06	0.71	06/30/06	0.67	06/30/06	2.95
03/31/06	0.77	03/31/06	0.75	03/31/06	2.84
Net Margin		Pre-Tax Margin		Book Value	
09/30/06	4.52	09/30/06	4.52	09/30/06	18.60
06/30/06	3.65	06/30/06	3.65	06/30/06	18.66
03/31/06	4.72	03/31/06	4.72	03/31/06	18.97
Inventory Turnover		Debt-to-Equity		Debt to Captial	
09/30/06	21.86	09/30/06	0.55	09/30/06	35.67
06/30/06	16.93	06/30/06	0.57	06/30/06	36.22
03/31/06	16.33	03/31/06	0.57	03/31/06	36.42



Zacks.com Quotes and Research

NORTHWEST NAT GAS CO (NYSE)

Scottrade 57 Online Stock Trades

NWN 41.07 ▲0.17 (0.42%) Vol. 27,100

10:57 CST

NW Natural is principally engaged in the distribution of natural gas. The Oregon Public Utility Commission (OPUC) has allocated to NW Natural as its exclusive service area a major portion of western Oregon, including the Portland metropolitan area, most of the fertile Willamette Valley and the coastal area from Astoria to Coos Bay. NW Natural also holds certificates from the Washington Utilities and Transportation Commission (WUTC) granting it exclusive rights to serve portions of three Washington counties bordering the Columbia River.

General Information

NORTHWEST NAT G

220 N.W. Second Avenue

Portland, OR 97209

Phone: 503 226-4211

Fax: 503 273-4824

Web: www.nwnatural.comEmail: investorinformation@nwnatural.com

Industry UTIL-GAS DISTR
Sector: Utilities

Fiscal Year End December

Last Reported 09/30/06

Quarter

Next EPS Date 02/15/2007

Price and Volume Information

Zacks Rank **P**
Yesterday's Close 40.90
52 Week High 41.93
52 Week Low 33.27
Beta 0.14
20 Day Moving Average 118,250.00
Target Price Consensus 41.33



% Price Change		% Price Change Relative to S&P 500	
4 Week	-1.00	4 Week	-2.10
12 Week	6.25	12 Week	-0.41
YTD	18.29	YTD	6.64

Share Information

Shares Outstanding (millions) 27.55
Market Capitalization (millions) 1,113.77
Short Ratio 13.54
Last Split Date 09/09/1996

Dividend Information

Dividend Yield 3.51%
Annual Dividend \$1.42
Payout Ratio 0.65
Change in Payout Ratio 0.00
Last Dividend Payout / Amount 10/27/2006 / \$0.35

EPS Information

Current Quarter EPS Consensus Estimate 1.02
Current Year EPS Consensus Estimate 2.22
Estimated Long-Term EPS Growth Rate 4.90
Next EPS Report Date 02/15/2007

Consensus Recommendations

Current (1=Strong Buy, 5=Strong Sell) 2.86
30 Days Ago 2.57
60 Days Ago 2.57
90 Days Ago 2.57

Fundamental Ratios

P/E		EPS Growth		Sales Growth	
Current FY Estimate:	18.22	vs. Previous Year	-12.90%	vs. Previous Year	158.61%
Trailing 12 Months:	18.98	vs. Previous Quarter	-600.00%	vs. Previous Quarter:	-32.79%
PEG Ratio	3.72				
Price Ratios		ROE		ROA	
Price/Book	1.88	09/30/06	9.81	09/30/06	3.15
Price/Cash Flow	9.30	06/30/06	10.06	06/30/06	3.10
Price / Sales	2.16	03/31/06	10.00	03/31/06	3.08
Current Ratio		Quick Ratio		Operating Margin	
09/30/06	0.84	09/30/06	0.43	09/30/06	11.46
06/30/06	0.92	06/30/06	0.52	06/30/06	13.49
03/31/06	1.02	03/31/06	0.84	03/31/06	13.83
Net Margin		Pre-Tax Margin		Book Value	
09/30/06	17.94	09/30/06	17.94	09/30/06	21.51
06/30/06	21.10	06/30/06	21.10	06/30/06	22.15
03/31/06	21.63	03/31/06	21.63	03/31/06	22.43
Inventory Turnover		Debt-to-Equity		Debt to Captial	
09/30/06	8.60	09/30/06	0.83	09/30/06	45.37
06/30/06	8.61	06/30/06	0.81	06/30/06	44.61
03/31/06	9.69	03/31/06	0.81	03/31/06	44.76



Zacks.com Quotes and Research

PIEDMONT NAT GAS INC (NYSE)

Scottrade 57 Online Stock Trades

PNY 28.10 ▲0.15 (0.54%) Vol. 37,900

10:57 CST

Piedmont Natural Gas Co, Inc., is an energy and services company engaged in the transportation and sale of natural gas and the sale of propane to residential, commercial and industrial customers in North Carolina, South Carolina and Tennessee. The Company is the second-largest natural gas utility in the southeast. The Company and its non-utility subsidiaries and divisions are also engaged in acquiring, marketing and arranging for the transportation and storage of natural gas for large-volume purchasers, and in the sale of propane to customers in the Company's three-state service area.

General Information

PIEDMONT NAT GA

4720 Piedmont Row Drive

Charlotte, NC 28210

Phone: 704 364-3120

Fax: 704 364-1395

Web: www.piedmontng.comEmail: headen.thomas@piedmontng.com

Industry UTIL-GAS DISTR

Sector: Utilities

Fiscal Year End October

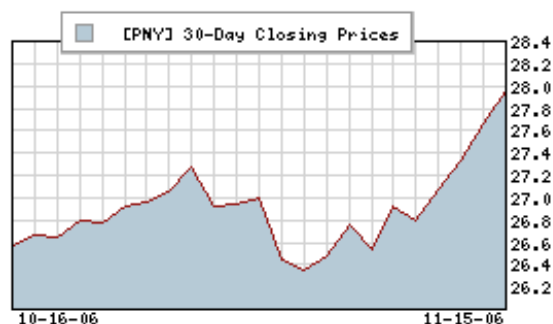
Last Reported 10/31/06

Quarter

Next EPS Date 12/08/2006

Price and Volume Information

Zacks Rank	P
Yesterday's Close	27.95
52 Week High	27.33
52 Week Low	22.53
Beta	0.35
20 Day Moving Average	171,175.00
Target Price Consensus	27



% Price Change		% Price Change Relative to S&P 500	
4 Week	2.86	4 Week	1.72
12 Week	5.93	12 Week	-0.72
YTD	13.12	YTD	1.28

Share Information

Shares Outstanding (millions)	75.33
Market Capitalization (millions)	2,058.69
Short Ratio	26.65
Last Split Date	04/01/1993

Dividend Information

Dividend Yield	3.51%
Annual Dividend	\$0.96
Payout Ratio	0.00
Change in Payout Ratio	0.00
Last Dividend Payout / Amount	09/20/2006 / \$0.24

EPS Information

Current Quarter EPS Consensus Estimate	-0.08
Current Year EPS Consensus Estimate	1.31
Estimated Long-Term EPS Growth Rate	5.60
Next EPS Report Date	12/08/2006

Consensus Recommendations

Current (1=Strong Buy, 5=Strong Sell)	2.89
30 Days Ago	2.89
60 Days Ago	2.89
90 Days Ago	2.63

Fundamental Ratios

P/E		EPS Growth		Sales Growth	
Current FY Estimate:	19.31	vs. Previous Year	-166.67%	vs. Previous Year	2.13%
Trailing 12 Months:	21.19	vs. Previous Quarter	-128.07%	vs. Previous Quarter:	-50.77%
PEG Ratio	3.45				
Price Ratios		ROE		ROA	
Price/Book	2.28	10/31/06	-	10/31/06	-
Price/Cash Flow	10.88	07/31/06	10.76	07/31/06	3.67
Price / Sales	-	04/30/06	11.60	04/30/06	4.04
Current Ratio		Quick Ratio		Operating Margin	
10/31/06	-	10/31/06	-	10/31/06	-
07/31/06	1.41	07/31/06	0.94	07/31/06	4.96
04/30/06	0.93	04/30/06	0.71	04/30/06	5.37
Net Margin		Pre-Tax Margin		Book Value	
10/31/06	-	10/31/06	-	10/31/06	-
07/31/06	8.12	07/31/06	8.12	07/31/06	11.98
04/30/06	8.80	04/30/06	8.80	04/30/06	12.19
Inventory Turnover		Debt-to-Equity		Debt to Capital	
10/31/06	-	10/31/06	-	10/31/06	-
07/31/06	9.96	07/31/06	0.91	07/31/06	47.77
04/30/06	10.45	04/30/06	0.67	04/30/06	40.18



Zacks.com Quotes and Research

SOUTH JERSEY INDS INC (NYSE)

Scottrade 57 Online Stock Trades

SJI 32.89 ▲0.05 (0.15%) Vol. 15,200

10:59 CST

South Jersey Inds Inc. is engaged in the business of operating, through subsidiaries, various business enterprises. The company's most significant subsidiary is South Jersey Gas Company (SJG). SJG is a public utility company engaged in the purchase, transmission and sale of natural gas for residential, commercial and industrial use. SJG also makes off-system sales of natural gas on a wholesale basis to various customers on the interstate pipeline system and transports natural gas.

General Information

SOUTH JERSEY IN

1 South Jersey Plaza

Folsom, NJ 08037

Phone: 609 561-9000

Fax: 609-704-1608

Web: www.sjindustries.comEmail: investorrelations@sjindustries.com

Industry UTIL-GAS DISTR

Sector: Utilities

Fiscal Year End December

Last Reported 09/30/06

Quarter

Next EPS Date 03/05/2007

Price and Volume Information

Zacks Rank	P
Yesterday's Close	32.84
52 Week High	32.29
52 Week Low	26.00
Beta	0.28
20 Day Moving Average	94,530.00
Target Price	34
Consensus	



% Price Change		% Price Change Relative to S&P 500	
4 Week	4.00	4 Week	2.85
12 Week	12.30	12 Week	5.25
YTD	10.64	YTD	0.17

Share Information

Shares Outstanding (millions)	29.23
Market Capitalization (millions)	942.47
Short Ratio	14.57
Last Split Date	03/04/1993

Dividend Information

Dividend Yield	2.79%
Annual Dividend	\$0.90
Payout Ratio	0.54
Change in Payout Ratio	0.00
Last Dividend Payout / Amount	09/07/2006 / \$0.22

EPS Information

Current Quarter EPS Consensus Estimate	0.56
Current Year EPS Consensus Estimate	1.83
Estimated Long-Term EPS Growth Rate	6.00
Next EPS Report Date	03/05/2007

Consensus Recommendations

Current (1=Strong Buy, 5=Strong Sell)	1.33
30 Days Ago	1.33
60 Days Ago	1.33
90 Days Ago	1.75

Fundamental Ratios

P/E		EPS Growth		Sales Growth	
Current FY Estimate:	17.58	vs. Previous Year	0.00%	vs. Previous Year	-15.23%
Trailing 12 Months:	19.31	vs. Previous Quarter	-64.00%	vs. Previous Quarter:	-14.45%
PEG Ratio	2.93				
Price Ratios		ROE		ROA	
Price/Book	2.22	09/30/06	11.73	09/30/06	3.39
Price/Cash Flow	12.27	06/30/06	12.09	06/30/06	3.47
Price / Sales	1.01	03/31/06	12.61	03/31/06	3.65
Current Ratio		Quick Ratio		Operating Margin	
09/30/06	-	09/30/06	-	09/30/06	5.16
06/30/06	0.90	06/30/06	0.50	06/30/06	5.05
03/31/06	0.94	03/31/06	0.73	03/31/06	5.09
Net Margin		Pre-Tax Margin		Book Value	
09/30/06	-	09/30/06	-	09/30/06	-
06/30/06	8.37	06/30/06	8.37	06/30/06	14.53
03/31/06	8.45	03/31/06	8.45	03/31/06	14.46
Inventory Turnover		Debt-to-Equity		Debt to Capital	
09/30/06	-	09/30/06	-	09/30/06	-
06/30/06	6.67	06/30/06	0.85	06/30/06	45.83
03/31/06	7.60	03/31/06	0.80	03/31/06	44.46



Zacks.com Quotes and Research

WGL HLDGS INC (NYSE)

Scottrade S7 Online Stock Trades

WGL 33.22 ▼-0.03 (-0.09%) Vol. 54,100

10:59 CST

WASHINGTON GAS LIGHT CO is a public utility that delivers and sells natural gas to metropolitan Washington, D.C. and adjoining areas in Maryland and Virginia. A distribution subsidiary serves portions of Virginia and West Virginia. The Company has four wholly-owned active subsidiaries that include: Shenandoah Gas Company (Shenandoah) is engaged in the delivery and sale of natural gas at retail in the Shenandoah Valley, including Winchester, Middletown, Strasburg, Stephens City and New Market, Virginia, and Martinsburg, West Virginia.

General Information

WGL HLDGS INC
101 Constitution Ave, N.W
Washington, DC 20080
Phone: 703 750-2000
Fax: -
Web: www.wglholdings.com
Email: apennix@washgas.com

Industry UTIL-GAS DISTR
Sector Utilities

Fiscal Year End September
Last Reported 09/30/06
Quarter
Next EPS Date 02/06/2007

Price and Volume Information

Zacks Rank **P**
Yesterday's Close 33.25
52 Week High 32.94
52 Week Low 27.38
Beta 0.27
20 Day Moving Average 169,810.00
Target Price Consensus 32

**% Price Change**

4 Week 2.09
12 Week 7.86
YTD 9.05

% Price Change Relative to S&P 500

4 Week 0.95
12 Week 1.09
YTD -2.27

Share Information

Shares Outstanding (millions) 48.77
Market Capitalization (millions) 1,598.81
Short Ratio 23.85
Last Split Date 05/02/1995

Dividend Information

Dividend Yield 4.12%
Annual Dividend \$1.35
Payout Ratio 0.72
Change in Payout Ratio 0.00
Last Dividend Payout / Amount 10/05/2006 / \$0.34

EPS Information

Current Quarter EPS Consensus Estimate 0.89
Current Year EPS Consensus Estimate 1.89
Estimated Long-Term EPS Growth Rate 3.30
Next EPS Report Date 02/06/2007

Consensus Recommendations

Current (1=Strong Buy, 5=Strong Sell) 2.67
30 Days Ago 2.33
60 Days Ago 2.20
90 Days Ago 2.60

Fundamental Ratios

P/E		EPS Growth		Sales Growth	
Current FY Estimate:	17.39	vs. Previous Year	28.00%	vs. Previous Year	48.87%
Trailing 12 Months:	17.44	vs. Previous Quarter	-1,700.00%	vs. Previous Quarter:	30.63%
PEG Ratio	5.22				
Price Ratios		ROE		ROA	
Price/Book	1.69	09/30/06	9.73	09/30/06	3.11
Price/Cash Flow	8.30	06/30/06	9.48	06/30/06	3.08
Price / Sales	1.27	03/31/06	8.72	03/31/06	2.87
Current Ratio		Quick Ratio		Operating Margin	
09/30/06	-	09/30/06	-	09/30/06	7.28
06/30/06	1.17	06/30/06	0.71	06/30/06	7.64
03/31/06	1.15	03/31/06	0.88	03/31/06	6.43
Net Margin		Pre-Tax Margin		Book Value	
09/30/06	-	09/30/06	-	09/30/06	-
06/30/06	9.88	06/30/06	9.88	06/30/06	19.41
03/31/06	8.19	03/31/06	8.19	03/31/06	19.76
Inventory Turnover		Debt-to-Equity		Debt to Captial	
09/30/06	-	09/30/06	-	09/30/06	-
06/30/06	3.29	06/30/06	0.61	06/30/06	37.38
03/31/06	3.63	03/31/06	0.60	03/31/06	36.96



Social responsibility:
Whose business is it?
A Reuters Newsmaker event

[Hear top executives debate this issue >](#)

Vonage

[US Edition \(change\)](#)

[Quote](#)

[GO](#) [Symbol Lookup](#)

[Search](#)

[News](#)

[GO](#)

Thu 16 Nov 2006 11:46am ET

[HOME](#)

[BUSINESS](#)

[INVESTING](#)

[News](#)

[Markets](#)

[Industries](#)

[Stocks](#)

[Overview](#)

[Option Quote](#)

[Charts](#)

[Officers & Directors](#)

[NEWS](#)

[Key Developments](#)

[Company News](#)

[Press Releases](#)

[FINANCES](#)

[Financial Highlights](#)

[Ratios](#)

[Financial Statements](#)

[SENTIMENT](#)

[Performance](#)

[Insider Trading](#)

[Institutional Holders](#)

[ANALYSIS](#)

[Risk Alerts](#)

[Estimates](#)

[Recommendations](#)

[Analyst Research](#)

[Funds](#)

[ETFs](#)

[Options](#)

[Commodities](#)

[Bonds](#)

[Currencies](#)

[Analyst Research](#)

[Ideas & Screening](#)

[Portfolio](#)

[NEWS](#)

Estimates

AGL Resources Inc ATG (NYSE)

Sector: [Utilities](#) Industry: [Natural Gas Utilities](#)

As of 11:25 AM EST
\$37.94 USD

Price Change
▲0.03

Percent Change
▲0.08%

[See Risk Alerts for ATG.](#)



[Independent Research](#) [Profile Report](#)

[Consensus Estimates Analysis](#) | [Historical Surprises](#) | [Consensus Estimates Trend](#) | [Estimates Revisions](#)

CONSENSUS ESTIMATES ANALYSIS

In U.S. Dollars	# of Ests.	Mean Est.	High Est.	Low Est.	Std.Dev.
Revenue (in Millions)					
Q4: 12/2006	--	--	--	--	--
Q1: 03/2007	--	--	--	--	--
FY: 2006	3	2,610.97	2,656.90	2,546.00	47.23
FY: 2007	3	2,606.30	2,645.90	2,563.00	33.94
EPS					
Q4: 12/2006	6	0.54	0.56	0.52	0.01
Q1: 03/2007	4	1.31	1.43	1.20	0.09
FY: 2006	10	2.62	2.68	2.42	0.07
FY: 2007	9	2.70	2.82	2.54	0.08
LT Growth Rate (%)	8	4.66	7.00	3.00	1.10

[Learn about EPS Estimates](#)

HISTORICAL SURPRISES

Estimates vs. Actual

In US Dollars	Estimates	Actual
Revenue (in Millions)		
Q3: 09/2006	373.83	434.00
Q1: 03/2006	935.22	1,047.00
Q4: 12/2005	569.80	993.00
Q3: 09/2005	270.22	393.00
Q2: 06/2005	341.00	431.00
EPS		
Q3: 09/2006	0.29	0.46
Q1: 03/2006	1.29	1.41
Q4: 12/2005	0.77	0.85



Free Annual Reports for thousands of companies-

[click here for yours](#)

Q3: 09/2005	0.26	0.19
Q2: 06/2005	0.32	0.30

[Learn about Historical Surprises](#)

CONSENSUS ESTIMATES TREND

In U.S. Dollars	Current	1 Week Ago	1 Month Ago	2 Months Ago
Revenue (in Millions)				
Q4: 12/2006	947.82	843.41	739.00	
Q1: 03/2007	950.00	950.00		
FY: 2006	2,610.97	2,610.97	2,664.58	2,664.58
FY: 2007	2,606.30	2,606.30	2,378.59	2,378.52
EPS				
Q4: 12/2006	0.54	0.54	0.66	0.69
Q1: 03/2007	1.31	1.31	1.31	1.31
FY: 2006	2.62	2.63	2.61	2.61
FY: 2007	2.70	2.69	2.68	2.68

[Learn about Estimates Trends](#)

ESTIMATES REVISIONS SUMMARY

Number of Estimate Revisions	Last Week		Last Month
	Up	Down	Up
Revenue (in Millions)			
Q4: 12/2006	0	0	0
Q1: 03/2007	0	0	0
FY: 2006	0	0	2
FY: 2007	0	0	1
Earnings			
Q4: 12/2006	0	0	0
Q1: 03/2007	0	0	2
FY: 2006	0	1	4
FY: 2007	1	1	2

[Learn about Estimates Revisions](#)

FIND OUT MORE ABOUT ATG

[Recommendations](#)

[Ratios](#)

[Financial Statements](#)

NYSE and AMEX quotes delayed by at least 20 minutes. Nasdaq and all other quotes delayed by at least 15 minutes. Reuters endorse the views or opinions given by any third party content provider.

[Reuters.com](#) [Help & Info](#) | [Contact Us](#) | [Sitemap](#) | [Advertise](#) | [Disclaimer](#) | [Copyright](#) | [Privacy](#) | [Corrections](#) | [Partner Newspapers](#) | [Interactive TV](#)





Before the Bell

Get a jump on the market with Reuters pre-open news in your inbox each day.

[SUBSCRIBE](#)

Seeking higher rates for your short-term cash?
Check out **Fidelity Money Market Funds**.

Before investing, consider the fund's investment objectives, risks, charges and expenses. Contact Fidelity for a prospectus containing this information. Read it carefully.



US Edition (change) Quote [GO](#) Symbol Lookup Search News [GO](#)

Thu 16 Nov 2006 11:37am ET

[HOME](#)

[BUSINESS](#)

[INVESTING](#)

[News](#)

[Markets](#)

[Industries](#)

[Stocks](#)

- [Overview](#)
- [Option Quote](#)
- [Charts](#)
- [Officers & Directors](#)

[NEWS](#)

- [Key Developments](#)
- [Company News](#)
- [Press Releases](#)

[FINANCES](#)

- [Financial Highlights](#)
- [Ratios](#)
- [Financial Statements](#)

[SENTIMENT](#)

- [Performance](#)
- [Insider Trading](#)
- [Institutional Holders](#)

[ANALYSIS](#)

[Risk Alerts](#)

[Estimates](#)

- [Recommendations](#)
- [Analyst Research](#)

[Funds](#)

[ETFs](#)

[Options](#)

[Commodities](#)

[Bonds](#)

[Currencies](#)

[Analyst Research](#)

[Ideas & Screening](#)

[Portfolio](#)

[NEWS](#)

Estimates

Atmos Energy Corp ATO (NYSE)

Sector: [Utilities](#) Industry: [Natural Gas Utilities](#)

As of 11:13 AM EST Price Change **▲0.02** Percent Change **▲0.06%** [See Risk Alerts for ATO.](#)

[Independent Research](#) [Profile Report](#)

[Consensus Estimates Analysis](#) | [Historical Surprises](#) | [Consensus Estimates Trend](#) | [Estimates Revisions](#)

CONSENSUS ESTIMATES ANALYSIS

In U.S. Dollars	# of Ests.	Mean Est.	High Est.	Low Est.	Std.Dev.
Revenue (in Millions)					
Q1: 12/2006	--	--	--	--	--
Q2: 03/2007	--	--	--	--	--
FY: 2007	1	10,753.00	10,753.00	10,753.00	--
FY: 2008	1	10,981.00	10,981.00	10,981.00	--
EPS					
Q1: 12/2006	6	0.95	1.06	0.88	0.07
Q2: 03/2007	6	1.15	1.25	1.03	0.07
FY: 2007	8	1.96	2.05	1.90	0.04
FY: 2008	5	2.09	2.22	2.02	0.07
LT Growth Rate (%)	7	4.96	7.00	3.00	1.43

[Learn about EPS Estimates](#)

HISTORICAL SURPRISES

Estimates vs. Actual		
In US Dollars	Estimates	Actual
Revenue (in Millions)		
Q3: 06/2006	1,085.84	863.24
Q1: 12/2005	1,912.26	2,283.82
Q4: 09/2005	659.40	1,004.63
Q3: 06/2005	683.40	909.95
Q2: 03/2005	1,607.68	1,685.09
EPS		
Q3: 06/2006	0.03	-0.07
Q1: 12/2005	0.82	0.88
Q4: 09/2005	-0.24	-0.21

**Banc of America
Investment
Services, Inc.***

Bank of America 

Fast \$7 Trades, No Limit

[Click Here](#)

Q3: 06/2005	-0.05	0.06
Q2: 03/2005	1.05	0.96

[Learn about Historical Surprises](#)

CONSENSUS ESTIMATES TREND

In U.S. Dollars	Current	1 Week Ago	1 Month Ago	2 Months Ago
Revenue (in Millions)				
Q1: 12/2006	1,708.00	2,141.00		
Q2: 03/2007	2,009.00	1,427.00		
FY: 2007	10,753.00	12,177.00	9,023.00	9,660.00
FY: 2008	10,981.00			
EPS				
Q1: 12/2006	0.95	0.90	0.89	0.89
Q2: 03/2007	1.15	1.14	1.15	1.15
FY: 2007	1.96	1.96	1.97	1.96
FY: 2008	2.09	2.05	2.06	2.05

[Learn about Estimates Trends](#)

ESTIMATES REVISIONS SUMMARY

Number of Estimate Revisions	Last Week		Last Month
	Up	Down	Up
Revenue (in Millions)			
Q1: 12/2006	0	0	0
Q2: 03/2007	0	0	0
FY: 2007	0	1	0
FY: 2008	0	0	0
Earnings			
Q1: 12/2006	0	0	0
Q2: 03/2007	0	0	1
FY: 2007	1	0	2
FY: 2008	1	1	2

[Learn about Estimates Revisions](#)

FIND OUT MORE ABOUT ATO

[Recommendations](#)

[Ratios](#)

[Financial Statements](#)

NYSE and AMEX quotes delayed by at least 20 minutes. Nasdaq and all other quotes delayed by at least 15 minutes. Reuters endorse the views or opinions given by any third party content provider.

[Reuters.com](#) [Help & Info](#) | [Contact Us](#) | [Sitemap](#) | [Advertise](#) | [Disclaimer](#) | [Copyright](#) | [Privacy](#) | [Corrections](#) | [Partner Newspapers](#) | [Interactive TV](#)

 XML



Social responsibility:
Whose business is it?
A Reuters Newsmaker event

[Hear top executives debate this issue >](#)

Vonage

[US Edition \(change\)](#)

[Quote](#)

[GO](#) [Symbol Lookup](#)

[Search](#)

[News](#)

[GO](#)

Thu 16 Nov 2006 11:48am ET

[HOME](#)

[BUSINESS](#)

[INVESTING](#)

[News](#)

[Markets](#)

[Industries](#)

[Stocks](#)

[Overview](#)

[Option Quote](#)

[Charts](#)

[Officers & Directors](#)

[NEWS](#)

[Key Developments](#)

[Company News](#)

[Press Releases](#)

[FINANCES](#)

[Financial Highlights](#)

[Ratios](#)

[Financial Statements](#)

[SENTIMENT](#)

[Performance](#)

[Insider Trading](#)

[Institutional Holders](#)

[ANALYSIS](#)

[Risk Alerts](#)

[Estimates](#)

[Recommendations](#)

[Analyst Research](#)

[Funds](#)

[ETFs](#)

[Options](#)

[Commodities](#)

[Bonds](#)

[Currencies](#)

[Analyst Research](#)

[Ideas & Screening](#)

[Portfolio](#)

[NEWS](#)

Estimates

New Jersey Resources Corp NJR (NYSE)

Sector: [Utilities](#) Industry: [Natural Gas Utilities](#)

As of 11:27 AM EST
\$52.62 USD

Price Change
▲0.07

Percent Change
▲0.13%

[See Risk Alerts for NJR.](#)



[Independent Research](#) [Broker Research](#)

[Consensus Estimates Analysis](#) | [Historical Surprises](#) | [Consensus Estimates Trend](#) | [Estimates Revisions](#)

CONSENSUS ESTIMATES ANALYSIS

In U.S. Dollars	# of Ests.	Mean Est.	High Est.	Low Est.	Std.Dev.
Revenue (in Millions)					
Q1: 12/2006	--	--	--	--	--
Q2: 03/2007	--	--	--	--	--
FY: 2007	--	--	--	--	--
FY: 2008	--	--	--	--	--
EPS					
Q1: 12/2006	2	1.20	1.25	1.15	0.05
Q2: 03/2007	2	2.09	2.18	2.00	0.09
FY: 2007	6	2.85	2.95	2.70	0.08
FY: 2008	4	2.93	2.99	2.89	0.04
LT Growth Rate (%)	6	5.72	8.30	4.00	1.46

[Learn about EPS Estimates](#)

HISTORICAL SURPRISES

Estimates vs. Actual

In US Dollars	Estimates	Actual
Revenue (in Millions)		
Q4: 09/2005	379.29	684.94
Q3: 06/2005	406.48	544.28
Q2: 03/2005	1,244.68	1,065.06
Q2: 03/2002	--	525.78
Q1: 12/2001	--	395.83
EPS		
Q4: 09/2005	-0.16	-0.18
Q3: 06/2005	0.11	0.07
Q2: 03/2005	1.79	1.84



Q2: 03/2002	--	1.29
Q1: 12/2001	--	0.73

[Learn about Historical Surprises](#)

CONSENSUS ESTIMATES TREND

We're sorry, Consensus Estimates Trend is not available for New Jersey Resources Corp (NJR). [Why?](#)

ESTIMATES REVISIONS SUMMARY

	Last Week		Last Month
	Up	Down	Up
Number of Estimate Revisions			
Revenue (in Millions)			
Q1: 12/2006	0	0	0
Q2: 03/2007	0	0	0
FY: 2007	0	0	0
FY: 2008	0	0	0
Earnings			
Q1: 12/2006	0	0	0
Q2: 03/2007	0	0	1
FY: 2007	0	1	0
FY: 2008	0	0	0

[Learn about Estimates Revisions](#)

FIND OUT MORE ABOUT NJR

[Recommendations](#)

[Ratios](#)

[Financial Statements](#)

NYSE and AMEX quotes delayed by at least 20 minutes. Nasdaq and all other quotes delayed by at least 15 minutes. Reuters endorse the views or opinions given by any third party content provider.

[Reuters.com](#) [Help & Info](#) | [Contact Us](#) | [Sitemap](#) | [Advertise](#) | [Disclaimer](#) | [Copyright](#) | [Privacy](#) | [Corrections](#) | [Partner Newspapers](#) | [Interactive T](#)

[XML](#)



Social responsibility: Whose business is it?
A Reuters Newsmaker event
[Hear top executives debate this issue >](#)

NOKIA Connecting People
Nokia E62. Email, attachment editing

US Edition (change) Quote Symbol Lookup Search News

Thu 16 Nov 2006 11:49am ET

[HOME](#)

[BUSINESS](#)

[INVESTING](#)

[News](#)

[Markets](#)

[Industries](#)

[Stocks](#)

- [Overview](#)
- [Option Quote](#)
- [Charts](#)
- [Officers & Directors](#)

[NEWS](#)

- [Key Developments](#)
- [Company News](#)
- [Press Releases](#)

[FINANCES](#)

- [Financial Highlights](#)
- [Ratios](#)
- [Financial Statements](#)

[SENTIMENT](#)

- [Performance](#)
- [Insider Trading](#)
- [Institutional Holders](#)

[ANALYSIS](#)

- [Risk Alerts](#)
- [Estimates](#)
- [Recommendations](#)
- [Analyst Research](#)

[Funds](#)

[ETFs](#)

[Options](#)

[Commodities](#)

[Bonds](#)

[Currencies](#)

[Analyst Research](#)

[Ideas & Screening](#)

[Portfolio](#)

[NEWS](#)

Estimates

Nicor Inc GAS (NYSE)

Sector: [Utilities](#) Industry: [Natural Gas Utilities](#)

As of 11:29 AM EST Price Change **▲0.10** Percent Change **▲0.20%** [See Risk Alerts for GAS.](#)

[Independent Research](#) [Profile Report](#)

[Consensus Estimates Analysis](#) | [Historical Surprises](#) | [Consensus Estimates Trend](#) | [Estimates Revisions](#)

CONSENSUS ESTIMATES ANALYSIS

In U.S. Dollars	# of Ests.	Mean Est.	High Est.	Low Est.	Std.Dev.
Revenue (in Millions)					
Q4: 12/2006	1	1,081.00	1,081.00	1,081.00	--
Q1: 03/2007	--	--	--	--	--
FY: 2006	1	3,202.30	3,202.30	3,202.30	--
FY: 2007	1	3,350.90	3,350.90	3,350.90	--
EPS					
Q4: 12/2006	3	0.96	0.98	0.95	0.01
Q1: 03/2007	1	0.97	0.97	0.97	--
FY: 2006	4	2.64	2.72	2.50	0.08
FY: 2007	4	2.71	2.75	2.60	0.07
LT Growth Rate (%)	6	3.25	6.00	1.50	1.46

[Learn about EPS Estimates](#)

HISTORICAL SURPRISES

Estimates vs. Actual		
In US Dollars	Estimates	Actual
Revenue (in Millions)		
Q3: 09/2006	321.00	351.10
Q2: 06/2006	539.00	451.30
Q1: 03/2006	1,746.00	1,319.40
Q4: 12/2005	986.00	1,357.50
Q3: 09/2005	300.00	336.00
EPS		
Q3: 09/2006	0.03	0.27
Q2: 06/2006	0.40	0.41
Q1: 03/2006	0.93	0.94



Free Annual Reports for thousands of companies-

[click here for yours](#)

Q4: 12/2005	0.97	1.02
Q3: 09/2005	-0.12	-0.09

[Learn about Historical Surprises](#)

CONSENSUS ESTIMATES TREND

In U.S. Dollars	Current	1 Week Ago	1 Month Ago	2 Months Ago
Revenue (in Millions)				
Q4: 12/2006	1,081.00	1,081.00	1,185.00	1,185.00
FY: 2006	3,202.30	3,202.30	3,276.00	3,276.00
FY: 2007	3,350.90	3,350.90	3,352.00	3,352.00
EPS				
Q4: 12/2006	0.96	0.96	1.10	1.10
Q1: 03/2007	0.97	0.97	0.97	0.97
FY: 2006	2.64	2.64	2.45	2.45
FY: 2007	2.71	2.71	2.52	2.52

[Learn about Estimates Trends](#)

ESTIMATES REVISIONS SUMMARY

Number of Estimate Revisions	Last Week		Last Month
	Up	Down	Up
Revenue (in Millions)			
Q4: 12/2006	0	0	0
Q1: 03/2007	0	0	0
FY: 2006	0	0	0
FY: 2007	0	0	0
Earnings			
Q4: 12/2006	0	0	1
Q1: 03/2007	0	0	0
FY: 2006	0	0	4
FY: 2007	0	0	4

[Learn about Estimates Revisions](#)

FIND OUT MORE ABOUT GAS

[Recommendations](#)

[Ratios](#)

[Financial Statements](#)

NYSE and AMEX quotes delayed by at least 20 minutes. Nasdaq and all other quotes delayed by at least 15 minutes. Reuters endorse the views or opinions given by any third party content provider.

[Reuters.com](#) [Help & Info](#) | [Contact Us](#) | [Sitemap](#) | [Advertise](#) | [Disclaimer](#) | [Copyright](#) | [Privacy](#) | [Corrections](#) | [Partner Newspapers](#) | [Interactive T](#)

[XML](#)



**Social responsibility:
Whose business is it?**
A Reuters Newsmaker event

[Hear top executives debate this issue](#)

Rate hikes you'll like.
Fidelity Money Market Funds

Before investing, consider the fund's investment objectives, risks, charges and expenses. Contact Fidelity for a prospectus containing this information. Read it carefully.



[US Edition \(change\)](#)

[Quote](#)

[GO](#) [Symbol Lookup](#)

[Search](#)

[News](#)

[GO](#)

Thu 16 Nov 2006 11:50am ET

[HOME](#)

[BUSINESS](#)

[INVESTING](#)

[News](#)

[Markets](#)

[Industries](#)

[Stocks](#)

[Overview](#)

[Option Quote](#)

[Charts](#)

[Officers & Directors](#)

[NEWS](#)

[Key Developments](#)

[Company News](#)

[Press Releases](#)

[FINANCES](#)

[Financial Highlights](#)

[Ratios](#)

[Financial Statements](#)

[SENTIMENT](#)

[Performance](#)

[Insider Trading](#)

[Institutional Holders](#)

[ANALYSIS](#)

[Risk Alerts](#)

[Estimates](#)

[Recommendations](#)

[Analyst Research](#)

[Funds](#)

[ETFs](#)

[Options](#)

[Commodities](#)

[Bonds](#)

[Currencies](#)

[Analyst Research](#)

[Ideas & Screening](#)

[Portfolio](#)

[NEWS](#)

Estimates

Northwest Natural Gas Co NWN (NYSE)

Sector: [Utilities](#) Industry: [Natural Gas Utilities](#)

As of 11:27 AM EST
\$41.09 USD

Price Change
▲0.19

Percent Change
▲0.46%

[See Risk Alerts for NWN.](#)



[Independent Research](#) [Broker Research](#)

[Consensus Estimates Analysis](#) | [Historical Surprises](#) | [Consensus Estimates Trend](#) | [Estimates Revisions](#)

CONSENSUS ESTIMATES ANALYSIS

In U.S. Dollars	# of Ests.	Mean Est.	High Est.	Low Est.	Std.Dev.
Revenue (in Millions)					
Q4: 12/2006	2	326.27	350.12	302.42	23.85
Q1: 03/2007	2	382.42	413.84	351.00	31.42
FY: 2006	4	987.03	1,026.41	969.00	22.99
FY: 2007	4	1,014.58	1,082.58	969.00	43.52
EPS					
Q4: 12/2006	5	1.02	1.05	0.97	0.03
Q1: 03/2007	4	1.53	1.58	1.50	0.03
FY: 2006	6	2.23	2.26	2.19	0.03
FY: 2007	6	2.36	2.39	2.30	0.03
LT Growth Rate (%)	3	5.33	6.00	5.00	0.47

[Learn about EPS Estimates](#)

HISTORICAL SURPRISES

Estimates vs. Actual

In US Dollars	Estimates	Actual
Revenue (in Millions)		
Q3: 09/2006	108.54	114.91
Q2: 06/2006	163.82	170.98
Q1: 03/2006	350.78	390.39
Q4: 12/2005	272.26	341.38
Q3: 09/2005	81.37	106.67
EPS		
Q3: 09/2006	-0.31	-0.35
Q2: 06/2006	0.05	0.07
Q1: 03/2006	1.47	1.48



Free Annual Reports for thousands of companies-

[click here for yours](#)

Q4: 12/2005	0.98	1.00
Q3: 09/2005	-0.33	-0.31

[Learn about Historical Surprises](#)

CONSENSUS ESTIMATES TREND

In U.S. Dollars	Current	1 Week Ago	1 Month Ago	2 Months Ago
Revenue (in Millions)				
Q4: 12/2006	326.27	326.27	326.27	326.27
Q1: 03/2007	382.42	382.42	382.42	382.42
FY: 2006	987.03	987.03	979.09	979.09
FY: 2007	1,014.58	1,014.58	999.91	999.91
EPS				
Q4: 12/2006	1.02	1.02	1.02	1.02
Q1: 03/2007	1.53	1.53	1.53	1.53
FY: 2006	2.23	2.23	2.25	2.25
FY: 2007	2.36	2.36	2.36	2.36

[Learn about Estimates Trends](#)

ESTIMATES REVISIONS SUMMARY

Number of Estimate Revisions	Last Week		Last Month
	Up	Down	Up
Revenue (in Millions)			
Q4: 12/2006	0	0	0
Q1: 03/2007	0	0	0
FY: 2006	0	0	3
FY: 2007	0	0	1
Earnings			
Q4: 12/2006	0	0	1
Q1: 03/2007	0	0	1
FY: 2006	0	0	0
FY: 2007	0	0	0

[Learn about Estimates Revisions](#)

FIND OUT MORE ABOUT NWN

[Recommendations](#)

[Ratios](#)

[Financial Statements](#)

NYSE and AMEX quotes delayed by at least 20 minutes. Nasdaq and all other quotes delayed by at least 15 minutes. Reuters endorse the views or opinions given by any third party content provider.

[Reuters.com](#) [Help & Info](#) | [Contact Us](#) | [Sitemap](#) | [Advertise](#) | [Disclaimer](#) | [Copyright](#) | [Privacy](#) | [Corrections](#) | [Partner Newspapers](#) | [Interactive TV](#)





Social responsibility: Whose business is it?
A Reuters Newsmaker event
[Hear top executives debate this issue >](#)

THIS GUY JUST MADE \$10,000!
Can you beat the market?

US Edition (change) Quote Symbol Lookup Search News

Thu 16 Nov 2006 11:50am ET

- [HOME](#)
- [BUSINESS](#)
- [INVESTING](#)
- [News](#)
- [Markets](#)
- [Industries](#)
- [Stocks](#)
 - [Overview](#)
 - [Option Quote](#)
 - [Charts](#)
 - [Officers & Directors](#)
- [NEWS](#)
 - [Key Developments](#)
 - [Company News](#)
 - [Press Releases](#)
- [FINANCES](#)
 - [Financial Highlights](#)
 - [Ratios](#)
 - [Financial Statements](#)
- [SENTIMENT](#)
 - [Performance](#)
 - [Insider Trading](#)
 - [Institutional Holders](#)
- [ANALYSIS](#)
 - [Risk Alerts](#)
 - [Estimates](#)
 - [Recommendations](#)
 - [Analyst Research](#)

Estimates

Piedmont Natural Gas Inc PNY (NYSE)

Sector: [Utilities](#) Industry: [Natural Gas Utilities](#)

As of 11:30 AM EST Price Change **▲0.20** Percent Change **▲0.72%** [See Risk Alerts for PNY.](#)

\$28.15 USD



[Independent Research](#) [TD AMERITRADE. Apply now.](#)

[Consensus Estimates Analysis](#) | [Historical Surprises](#) | [Consensus Estimates Trend](#) | [Estimates Revisions](#)

CONSENSUS ESTIMATES ANALYSIS

In U.S. Dollars	# of Ests.	Mean Est.	High Est.	Low Est.	Std.Dev.
Revenue (in Millions)					
Q4: 10/2006	2	153.00	239.00	67.00	86.00
Q1: 01/2007	--	--	--	--	--
FY: 2006	4	1,913.18	2,040.60	1,743.10	113.79
FY: 2007	4	1,873.93	2,062.70	1,690.40	138.39
EPS					
Q4: 10/2006	7	-0.08	-0.05	-0.10	0.02
Q1: 01/2007	3	0.97	0.98	0.97	0.00
FY: 2006	8	1.31	1.35	1.25	0.03
FY: 2007	8	1.42	1.45	1.38	0.02
LT Growth Rate (%)	7	4.86	6.00	3.00	1.12

[Learn about EPS Estimates](#)

HISTORICAL SURPRISES

Estimates vs. Actual		
In US Dollars	Estimates	Actual
Revenue (in Millions)		
Q3: 07/2006	239.50	237.87
Q2: 04/2006	559.90	483.20
Q4: 10/2005	219.20	339.59
Q3: 07/2005	231.05	232.91
Q2: 04/2005	544.10	508.04
EPS		
Q3: 07/2006	-0.09	-0.09
Q2: 04/2006	0.54	0.57
Q4: 10/2005	-0.11	-0.06

- [Funds](#)
- [ETFs](#)
- [Options](#)
- [Commodities](#)
- [Bonds](#)
- [Currencies](#)
- [Analyst Research](#)
- [Ideas & Screening](#)
- [Portfolio](#)
- [NEWS](#)



Get a jump on the day w/
an early morning summary
of news developments.

[Receive 'Before the Bell'](#)

Q3: 07/2005	-0.10	-0.06
Q2: 04/2005	0.57	0.52

[Learn about Historical Surprises](#)

CONSENSUS ESTIMATES TREND

In U.S. Dollars	Current	1 Week Ago	1 Month Ago	2 Months Ago
Revenue (in Millions)				
Q4: 10/2006	153.00	153.00	153.00	153.00
FY: 2006	1,913.18	1,913.18	1,913.18	1,913.18
FY: 2007	1,873.93	1,873.93	1,873.93	1,873.93
EPS				
Q4: 10/2006	-0.08	-0.08	-0.08	-0.08
Q1: 01/2007	0.97	0.97	0.97	0.97
FY: 2006	1.31	1.31	1.31	1.31
FY: 2007	1.42	1.42	1.42	1.42

[Learn about Estimates Trends](#)

ESTIMATES REVISIONS SUMMARY

Number of Estimate Revisions	Last Week		Last Month
	Up	Down	Up
Revenue (in Millions)			
Q4: 10/2006	0	0	0
Q1: 01/2007	0	0	0
FY: 2006	0	0	0
FY: 2007	0	0	0
Earnings			
Q4: 10/2006	0	0	0
Q1: 01/2007	0	0	0
FY: 2006	0	0	0
FY: 2007	0	0	0

[Learn about Estimates Revisions](#)

FIND OUT MORE ABOUT PNY

[Recommendations](#)

[Ratios](#)

[Financial Statements](#)

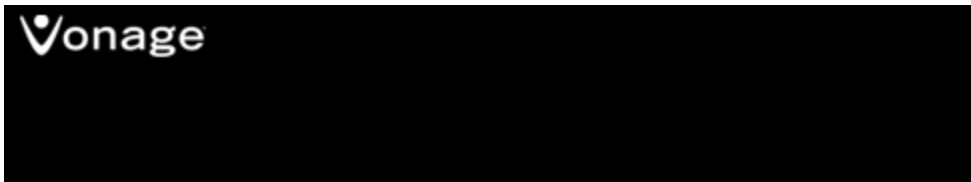
NYSE and AMEX quotes delayed by at least 20 minutes. Nasdaq and all other quotes delayed by at least 15 minutes. Reuters endorse the views or opinions given by any third party content provider.

[Reuters.com](#) [Help & Info](#) | [Contact Us](#) | [Sitemap](#) | [Advertise](#) | [Disclaimer](#) | [Copyright](#) | [Privacy](#) | [Corrections](#) | [Partner Newspapers](#) | [Interactive T](#)

[XML](#)



Social responsibility: Whose business is it?
A Reuters Newsmaker event
[Hear top executives debate this issue >](#)



US Edition (change) Quote GO Symbol Lookup Search News GO

Thu 16 Nov 2006 11:54am ET

[HOME](#)

[BUSINESS](#)

[INVESTING](#)

[News](#)

[Markets](#)

[Industries](#)

[Stocks](#)

- [Overview](#)
- [Option Quote](#)
- [Charts](#)
- [Officers & Directors](#)

[NEWS](#)

- [Key Developments](#)
- [Company News](#)
- [Press Releases](#)

[FINANCES](#)

- [Financial Highlights](#)
- [Ratios](#)
- [Financial Statements](#)

[SENTIMENT](#)

- [Performance](#)
- [Insider Trading](#)
- [Institutional Holders](#)

[ANALYSIS](#)

- [Risk Alerts](#)
- [Estimates](#)
- [Recommendations](#)
- [Analyst Research](#)

[Funds](#)

[ETFs](#)

[Options](#)

[Commodities](#)

[Bonds](#)

[Currencies](#)

[Analyst Research](#)

[Ideas & Screening](#)

[Portfolio](#)

[NEWS](#)

Estimates

South Jersey Industries Inc SJI (NYSE)

Sector: [Utilities](#) Industry: [Natural Gas Utilities](#)

As of 11:33 AM EST Price Change **▼0.01** Percent Change **▼0.03%** [See Risk Alerts for SJI.](#)

[Independent Research](#) [Broker Research](#)

[Consensus Estimates Analysis](#) | [Historical Surprises](#) | [Consensus Estimates Trend](#) | [Estimates Revisions](#)

CONSENSUS ESTIMATES ANALYSIS

In U.S. Dollars	# of Ests.	Mean Est.	High Est.	Low Est.	Std.Dev.
Revenue (in Millions)					
Q4: 12/2006	1	245.00	245.00	245.00	--
Q1: 03/2007	1	320.00	320.00	320.00	--
FY: 2006	1	815.50	815.50	815.50	--
FY: 2007	1	824.30	824.30	824.30	--
EPS					
Q4: 12/2006	2	0.56	0.58	0.53	0.03
Q1: 03/2007	2	0.98	0.98	0.98	0.00
FY: 2006	3	1.83	1.85	1.82	0.01
FY: 2007	3	1.97	1.98	1.95	0.01
LT Growth Rate (%)	3	6.33	7.00	6.00	0.47

[Learn about EPS Estimates](#)

HISTORICAL SURPRISES

Estimates vs. Actual		
In US Dollars	Estimates	Actual
Revenue (in Millions)		
Q3: 09/2006	136.00	133.06
Q2: 06/2006	123.90	155.53
Q1: 03/2006	307.90	364.98
Q2: 06/2005	142.20	154.04
Q1: 03/2005	327.58	328.57
EPS		
Q3: 09/2006	0.12	0.09
Q2: 06/2006	0.28	0.25
Q1: 03/2006	0.91	0.93



Free Annual Reports for thousands of companies-

[click here for yours](#)

Q2: 06/2005	0.16	0.27
Q1: 03/2005	0.94	0.96

[Learn about Historical Surprises](#)

CONSENSUS ESTIMATES TREND

In U.S. Dollars	Current	1 Week Ago	1 Month Ago	2 Months Ago
Revenue (in Millions)				
Q4: 12/2006	245.00	245.00	245.00	245.00
Q1: 03/2007	320.00	320.00	320.00	320.00
FY: 2006	815.50	815.50	815.50	815.50
FY: 2007	824.30	824.30	824.30	824.30
EPS				
Q4: 12/2006	0.56	0.56	0.54	0.54
Q1: 03/2007	0.98	0.98	0.98	0.98
FY: 2006	1.83	1.83	1.83	1.83
FY: 2007	1.97	1.95	1.95	1.95

[Learn about Estimates Trends](#)

ESTIMATES REVISIONS SUMMARY

Number of Estimate Revisions	Last Week		Last Month
	Up	Down	Up
Revenue (in Millions)			
Q4: 12/2006	0	0	0
Q1: 03/2007	0	0	0
FY: 2006	0	0	0
FY: 2007	0	0	0
Earnings			
Q4: 12/2006	0	0	1
Q1: 03/2007	0	0	0
FY: 2006	0	0	0
FY: 2007	1	0	1

[Learn about Estimates Revisions](#)

FIND OUT MORE ABOUT SJI

[Recommendations](#)

[Ratios](#)

[Financial Statements](#)

NYSE and AMEX quotes delayed by at least 20 minutes. Nasdaq and all other quotes delayed by at least 15 minutes. Reuters endorse the views or opinions given by any third party content provider.

[Reuters.com](#) [Help & Info](#) | [Contact Us](#) | [Sitemap](#) | [Advertise](#) | [Disclaimer](#) | [Copyright](#) | [Privacy](#) | [Corrections](#) | [Partner Newspapers](#) | [Interactive TV](#)





Social responsibility:
Whose business is it?
A Reuters Newsmaker event

[Hear top executives debate this issue >](#)

Vonage

[US Edition \(change\)](#)

[Quote](#)

[GO](#) [Symbol Lookup](#)

[Search](#)

[News](#)

[GO](#)

Thu 16 Nov 2006 11:53am ET

[HOME](#)

[BUSINESS](#)

[INVESTING](#)

[News](#)

[Markets](#)

[Industries](#)

[Stocks](#)

[Overview](#)

[Option Quote](#)

[Charts](#)

[Officers & Directors](#)

[NEWS](#)

[Key Developments](#)

[Company News](#)

[Press Releases](#)

[FINANCES](#)

[Financial Highlights](#)

[Ratios](#)

[Financial Statements](#)

[SENTIMENT](#)

[Performance](#)

[Insider Trading](#)

[Institutional Holders](#)

[ANALYSIS](#)

[Risk Alerts](#)

[Estimates](#)

[Recommendations](#)

[Analyst Research](#)

[Funds](#)

[ETFs](#)

[Options](#)

[Commodities](#)

[Bonds](#)

[Currencies](#)

[Analyst Research](#)

[Ideas & Screening](#)

[Portfolio](#)

[NEWS](#)

Estimates

WGL Holdings Inc WGL (NYSE)

Sector: [Utilities](#) Industry: [Natural Gas Utilities](#)

As of 11:32 AM EST
\$33.24 USD

Price Change
▼0.01

Percent Change
▼0.03%

[See Risk Alerts for WGL.](#)



[Independent Research](#) [Profile Report](#)

[Consensus Estimates Analysis](#) | [Historical Surprises](#) | [Consensus Estimates Trend](#) | [Estimates Revisions](#)

CONSENSUS ESTIMATES ANALYSIS

In U.S. Dollars	# of Ests.	Mean Est.	High Est.	Low Est.	Std.Dev.
Revenue (in Millions)					
Q1: 12/2006	1	177.10	177.10	177.10	--
Q2: 03/2007	1	218.55	218.55	218.55	--
FY: 2007	3	1,642.79	2,447.00	561.90	794.07
FY: 2008	1	2,546.00	2,546.00	2,546.00	--
EPS					
Q1: 12/2006	5	0.90	0.93	0.86	0.03
Q2: 03/2007	5	1.22	1.29	1.16	0.04
FY: 2007	7	1.91	1.98	1.85	0.04
FY: 2008	3	1.99	2.02	1.95	0.03
LT Growth Rate (%)	6	3.40	4.00	3.00	0.45

[Learn about EPS Estimates](#)

HISTORICAL SURPRISES

Estimates vs. Actual

In US Dollars	Estimates	Actual
Revenue (in Millions)		
Q4: 09/2006	109.82	131.92
Q3: 06/2006	200.27	183.60
Q2: 03/2006	586.04	705.66
Q1: 12/2005	410.98	601.34
Q4: 09/2005	139.06	137.58
EPS		
Q4: 09/2006	-0.22	-0.18
Q3: 06/2006	-0.08	-0.01
Q2: 03/2006	1.25	1.20



Free Annual Reports for thousands of companies-

[click here for yours](#)

Q1: 12/2005	0.86	0.91
Q4: 09/2005	-0.37	-0.25

[Learn about Historical Surprises](#)

CONSENSUS ESTIMATES TREND

In U.S. Dollars	Current	1 Week Ago	1 Month Ago	2 Months Ago
Revenue (in Millions)				
Q1: 12/2006	177.10	188.75	188.75	188.75
Q2: 03/2007	218.55	220.79	220.79	220.79
FY: 2007	1,642.79	1,147.38	1,147.38	1,147.38
FY: 2008	2,546.00			
EPS				
Q1: 12/2006	0.90	0.94	0.94	0.94
Q2: 03/2007	1.22	1.21	1.21	1.21
FY: 2007	1.91	1.93	1.93	1.93
FY: 2008	1.99	1.99	1.99	1.99

[Learn about Estimates Trends](#)

ESTIMATES REVISIONS SUMMARY

Number of Estimate Revisions	Last Week		Last Month
	Up	Down	
Revenue (in Millions)			
Q1: 12/2006	0	1	0
Q2: 03/2007	0	1	0
FY: 2007	2	1	2
FY: 2008	0	0	0
Earnings			
Q1: 12/2006	0	4	0
Q2: 03/2007	2	2	2
FY: 2007	0	4	0
FY: 2008	0	0	0

[Learn about Estimates Revisions](#)

FIND OUT MORE ABOUT WGL

[Recommendations](#)

[Ratios](#)

[Financial Statements](#)

NYSE and AMEX quotes delayed by at least 20 minutes. Nasdaq and all other quotes delayed by at least 15 minutes. Reuters endorse the views or opinions given by any third party content provider.

[Reuters.com](#) [Help & Info](#) | [Contact Us](#) | [Sitemap](#) | [Advertise](#) | [Disclaimer](#) | [Copyright](#) | [Privacy](#) | [Corrections](#) | [Partner Newspapers](#) | [Interactive TV](#)

