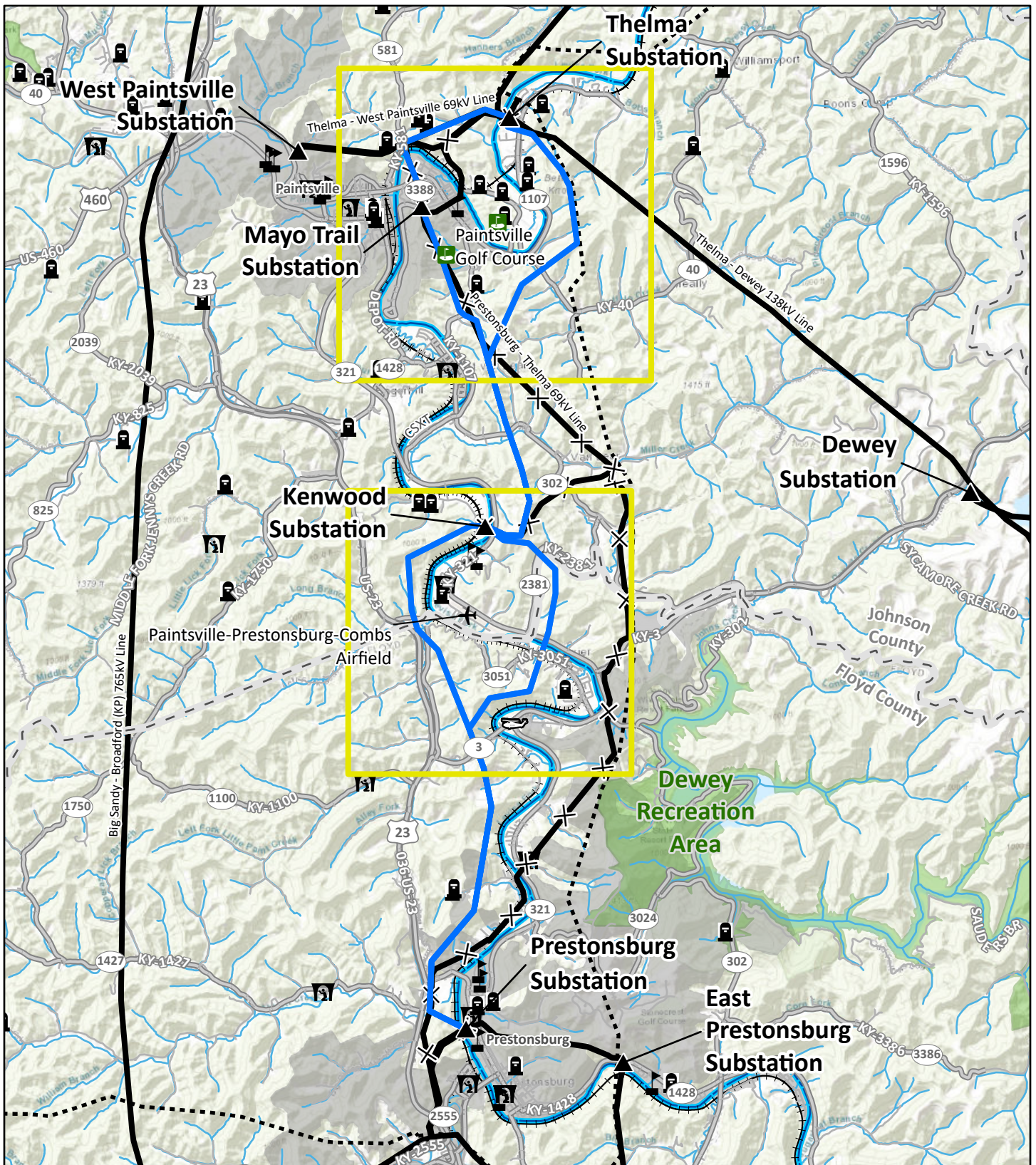


EXHIBIT 7

Part 2 of 3

Attachment E: Route Development Maps



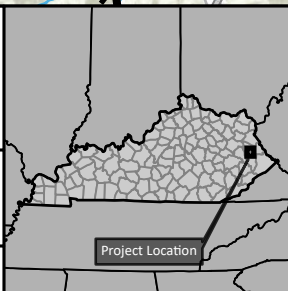
- | | |
|---|-------------------------------------|
| ▲ Existing AEP Substation | ☠ Cemetery |
| — Study Segment | — Highway |
| × × Existing Transmission Line to be Replaced | — Road |
| — Existing AEP Transmission Line | — Railroad |
| - - - Existing Non AEP Transmission Line | — Section 10 Waterway (Levisa Fork) |
| ✈ Airport | — Stream (NHD) |
| ✈ Helipad | ▭ Focus Areas |
| 🎓 School | ▭ Federal Conservation |
| 🏠 Place of Worship | ▭ Municipality |

Johnson and Floyd Counties, Kentucky

Author: JH
Project: 175940

NAD 1983 State Plane Kentucky South
FIPS 1602 Feet
Lambert Conformal Conic
North American 1983

July 03, 2023



Map 4:
Focus Areas

**Prestonsburg - Thelma
Transmission Line
Rebuild Project**

0 1 2
Miles

Attachment F: Environmental Justice Communities

Table 1. Environmental Justice Communities

CBG within one mile of centerline	Crossed by Centerline	Population	% people of color	% low income	% linguistic isolation	% less than high school	% under age 5	% over age 64
Kentucky¹		4,505,836	16%	36%	1%	13%	6%	16%
210719201001	Yes	689	2%	33%	0%	2%	14%	18%
210719201003	No	622	2%	52%	0%	48%	9%	33%
210719201004	Yes	962	6%	62%	0%	19%	4%	22%
210719202001	No	949	0%	45%	0%	21%	7%	22%
210719210013	Yes	1095	10%	38%	0%	13%	7%	14%
210719210021	Yes	1417	2%	39%	0%	23%	8%	8%
210719210022	No	646	0%	66%	0%	15%	7%	5%
210719210023	No	1683	4%	29%	0%	16%	7%	9%
211159603003	No	945	2%	62%	0%	19%	9%	11%
211159604011	No	652	14%	40%	0%	7%	8%	9%
211159604012	No	1915	4%	56%	0%	18%	8%	13%
211159604013	No	853	3%	67%	0%	24%	0%	37%
211159604022	No	1226	2%	15%	0%	5%	2%	24%
211159605002	Yes	899	15%	44%	0%	19%	2%	10%
211159605003	Yes	1082	0%	47%	0%	26%	6%	21%
211159606001	Yes	1133	0%	49%	0%	19%	1%	28%
211159606002	Yes	832	0%	42%	0%	12%	6%	9%
211159606003	No	1231	0%	27%	0%	9%	14%	10%
211159606004	Yes	1110	1%	14%	0%	6%	9%	35%

¹ Kentucky Population (U.S.Census Bureau April 1, 2020).

Note:

Bold text indicates populations which exceed the state average, and are crossed by the Proposed Route.

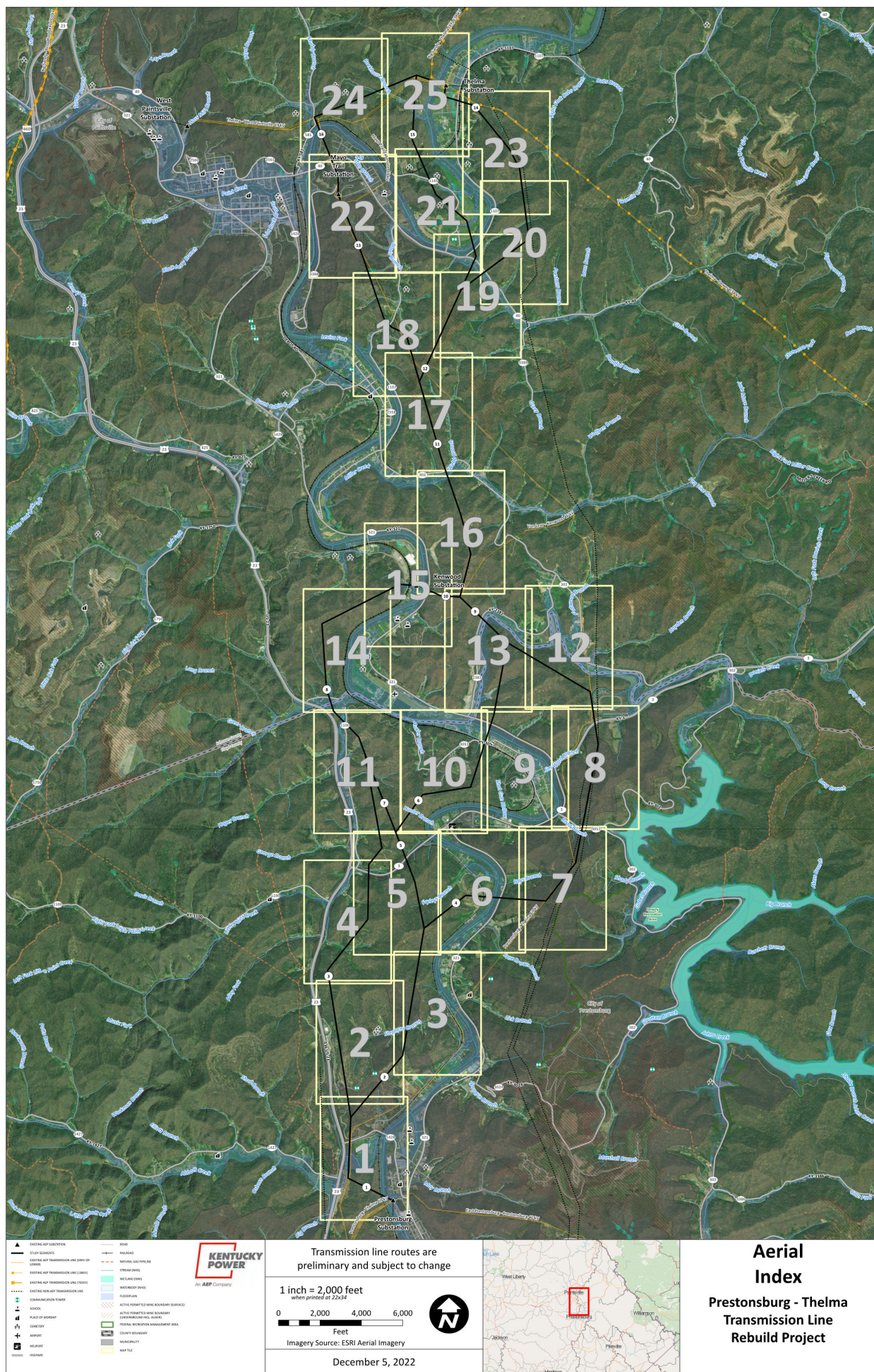
Gray shaded cells indicate reference populations.

Green shaded cells indicate identified minority populations which exceed the state average.

Yellow shaded cells indicate identified low-income populations which exceed the state average.

Orange shaded cells indicate identified other demographic populations as defined in EJSCREEN, which exceed the state average.

Attachment G: Aerial Mapbook





Aerial Map 2 of 25

**Prestonsburg - Thelma
Transmission Line
Rebuild Project**



KENTUCKY POWER
An AEP Company

PROPERTY BOUNDARY
 EXISTING 66KV TRANSMISSION LINE (66KV OR LOWER)
 PARCELS
 0.5 & 0.50 ACRES
 PLACES OF WORSHIP
 HIGHWAY
 ROAD
 MAINTAINED
 STREAM (DAVE)
 WETLAND (DAVE)
 FLOODPLAIN
 MINOR PLOT
 ACTIVE PERMITTED MAINT BOUNDARY (DAVE)
 MAP TIE

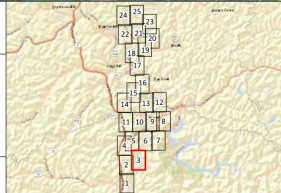
Transmission line routes are preliminary and subject to change

1 inch = 200 feet
when printed at 22x34

0 200 400 600
Feet

Imagery Source: ESRI Aerial Imagery

December 5, 2022



Aerial Map 3 of 25

Prestonsburg - Thelma
Transmission Line
Rebuild Project



MAP ELEMENTS

- PARCELS
- DEED & EASEMENTS
- ROADS
- UTILITY LINES
- WETLANDS
- WATERBODIES
- ROADWAY
- RAILROAD
- MAP TITLE

KENTUCKY POWER
An AEP Company

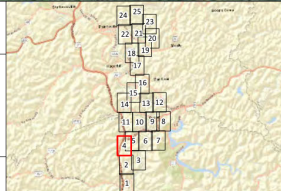
Transmission line routes are preliminary and subject to change

1 inch = 200 feet
when printed at 22x34

0 200 400 600
Feet

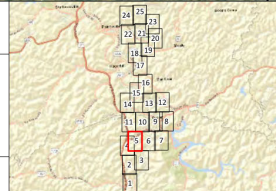
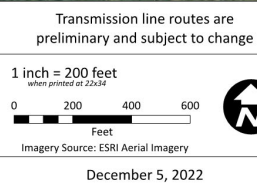
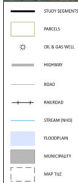
Imagery Source: ESRI Aerial Imagery

December 5, 2022



Aerial Map 4 of 25

Prestonsburg - Thelma
Transmission Line
Rebuild Project



**Prestonsburg - Thelma
Transmission Line
Rebuild Project**





KENTUCKY POWER
An AEP Company

STREET CENTERLINE
EXISTING HIGH VOLTAGE TRANSMISSION LINE (500V OR GREATER)
EXISTING MEDIUM VOLTAGE TRANSMISSION LINE (138KV)
EXISTING LOW VOLTAGE TRANSMISSION LINE (15KV)
PARCELS
OIL & GAS WELLS
HIGHWAY
RAILROAD
ROAD

STRAIGHT DITCH
WATERWAY DITCH
WETLAND DITCH
FLOODPLAIN
SEAWALL
FEDERAL RECREATION MANAGEMENT AREA
MAP TILE

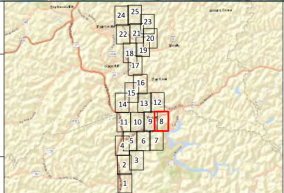
Transmission line routes are preliminary and subject to change

1 inch = 200 feet
when printed at 22x34

0 200 400 600
Feet

Imagery Source: ESRI Aerial Imagery

December 5, 2022



Aerial Map 8 of 25

**Prestonsburg - Thelma
Transmission Line
Rebuild Project**





STAFF ELEMENTS

- PARCELS
- ON & OFF RIGS
- ROADS
- RAILROADS

STANDARD ENDS

- WETLAND ENDS
- FLOODPLAIN
- STREAM BANK
- MAINTENANCE
- ACTUAL PERMITTED MAIN BOUNDARY (SURVEY)
- MAP TIE

KENTUCKY POWER
An AEP Company

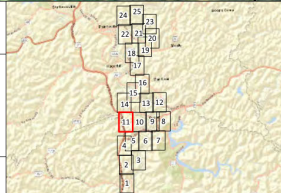
Transmission line routes are preliminary and subject to change

1 inch = 200 feet
when printed at 22x34

0 200 400 600
Feet

Imagery Source: ESRI Aerial Imagery

December 5, 2022



Aerial Map 11 of 25

**Prestonsburg - Thelma
Transmission Line
Rebuild Project**



KENTUCKY POWER
An AEP Company

Legend:
- PROPERTY BOUNDARIES
- EXISTING 66KV TRANSMISSION LINE (66KV LSE)
- PARCELS
- EASEMENTS
- ROADS
- DRAINAGE DITCHES
- FLOODPLAIN
- MAP TILE

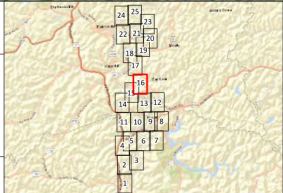
Transmission line routes are preliminary and subject to change

1 inch = 200 feet
when printed at 22x34

0 200 400 600
Feet

Imagery Source: ESRI Aerial Imagery

December 5, 2022



Aerial Map 16 of 25

**Prestonsburg - Thelma
Transmission Line
Rebuild Project**



- PROPOSED TRANSMISSION LINE ROUTES
- EXISTING HIGH VOLTAGE TRANSMISSION LINE ROUTES
- LANDS
- PARCELS
- DEVELOPMENT
- ROADS
- STREAMS (BANKS)
- WATERBODIES
- ACTUAL PROPERTY LINE BOUNDARIES (OWNERS)
- MAP TITLE



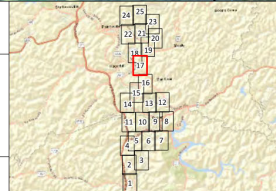
Transmission line routes are preliminary and subject to change

1 inch = 200 feet
when printed at 22x34

0 200 400 600
Feet

Imagery Source: ESRI Aerial Imagery

December 5, 2022



Aerial Map 17 of 25

Prestonsburg - Thelma
Transmission Line
Rebuild Project



KENTUCKY POWER
An AEP Company

STREET (CENTERLINE)
EXISTING HIGH TRANSMISSION LINE (SHOWING CORNER)
FENCE
OIL & GAS WELL
POPULATED PLACE
PLACE OF WORSHIP
Cemetery
ROADWAY

RAILROAD
STREAM (CENTERLINE)
WETLAND (DUNE)
FLOODPLAIN
MUNICIPALITY
ACTUAL PERMITTED WARE BOUNDARY (DOTTED)
MAP TITLE

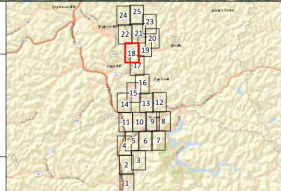
Transmission line routes are preliminary and subject to change

1 inch = 200 feet
when printed at 22x34

0 200 400 600
Feet

Imagery Source: ESRI Aerial Imagery

December 5, 2022



Aerial Map 18 of 25

**Prestonsburg - Thelma
Transmission Line
Rebuild Project**





STAFF COMMENTS

LEGEND

- EXISTING HIGH VOLT TRANSMISSION LINE
- PROPOSED TRANSMISSION LINE
- ROAD
- STREAM (DAVE)
- WETLAND (DAVE)
- FLOODPLAIN
- ACTUAL PERMITTED MAIN BOUNDARY (DAVE)
- MAP TIE

KENTUCKY POWER
An AEP Company

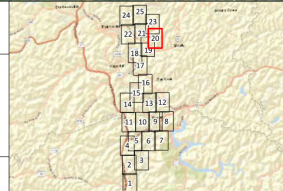
Transmission line routes are preliminary and subject to change

1 inch = 200 feet
when printed at 22x34

0 200 400 600
Feet

Imagery Source: ESRI Aerial Imagery

December 5, 2022



Aerial Map 20 of 25

**Prestonsburg - Thelma
Transmission Line
Rebuild Project**



STAFF ELEMENTS

- PARCELS
- ON & OFF RAILS
- GOLF COURSE
- COMMUNICATION TOWER
- CITY/STATE
- ROAD
- RAILROAD
- STREAM/DRAIN
- WETLAND/DUNE
- FLOODPLAIN
- MUNICIPALITY
- MAP TILE

KENTUCKY POWER
An AEP Company

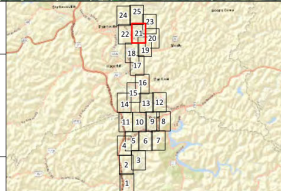
Transmission line routes are preliminary and subject to change

1 inch = 200 feet
when printed at 22x34

0 200 400 600
Feet

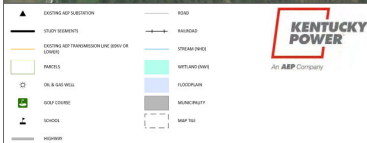
Imagery Source: ESRI Aerial Imagery

December 5, 2022



Aerial Map 21 of 25

**Prestonsburg - Thelma
Transmission Line
Rebuild Project**



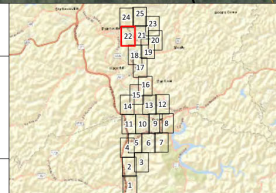
Transmission line routes are preliminary and subject to change

1 inch = 200 feet
when printed at 22x34



Imagery Source: ESRI Aerial Imagery

December 5, 2022



Aerial Map 22 of 25

Prestonsburg - Thelma
Transmission Line
Rebuild Project



STAY ELEMENTS

EXISTING KEY TRANSMISSION LINE (CORRE)

EXISTING NON-KEY TRANSMISSION LINE

PARCELS

OIL & GAS WELLS

CITY/STATE

ROADWAY

Road

Stream (DAVE)

Wetland (DAVE)

Floodplain

ACTUAL PERMITTED MAIN BOUNDARY (DAVE)

MAP TIE

KENTUCKY POWER

an AEP Company

Transmission line routes are preliminary and subject to change

1 inch = 200 feet

when printed at 22x34

0 200 400 600

Feet

Imagery Source: ESRI Aerial Imagery

December 5, 2022

N

Aerial Map 23 of 25

Prestonsburg - Thelma
Transmission Line
Rebuild Project



KENTUCKY POWER
An AEP Company

PROPOSED TRANSMISSION LINE ROUTE
EXISTING 115KV TRANSMISSION LINE ROUTE
COUNTY
PARCELS
OIL & GAS WELLS
POPULATED PLACE
CITY/TOWN
HIGHWAY
ROAD
RAILROAD
STREAM (DRAIN)
FLOODPLAIN
SEWAGE PLANT
ACTIVE PERMITTED WARE BOUNDARY (DRAINAGE)
MAP TITLE

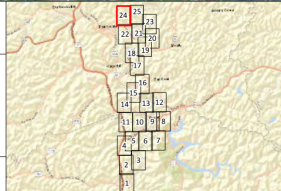
Transmission line routes are preliminary and subject to change

1 inch = 200 feet
when printed at 22x34

0 200 400 600
Feet

Imagery Source: ESRI Aerial Imagery

December 5, 2022



Aerial Map 24 of 25

**Prestonsburg - Thelma
Transmission Line
Rebuild Project**



KENTUCKY POWER
An AEP Company

▲ EXISTING MAP SUBSTATIONS
— STUDY SUBSTANCES
— EXISTING MAP TRANSMISSION LINE (SHOW OR LOWER)
— EXISTING MAP TRANSMISSION LINE (SHOW)
— EXISTING NON-MAP TRANSMISSION LINE
— PARCELS
— POL & C&G (S&C)
● POPULATED PLACE

— HIGHWAY
— ROAD
— RAILROAD
— STREAM (DAKE)
— WETLAND (DAKE)
— FLOODPLAIN
— ACTUAL PERMITTED WARE BOUNDARY (DAKE)

MAP TITLE

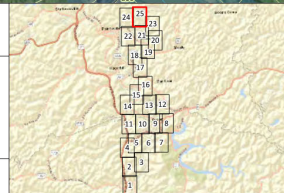
Transmission line routes are preliminary and subject to change

1 inch = 200 feet
when printed at 22x34

0 200 400 600
Feet

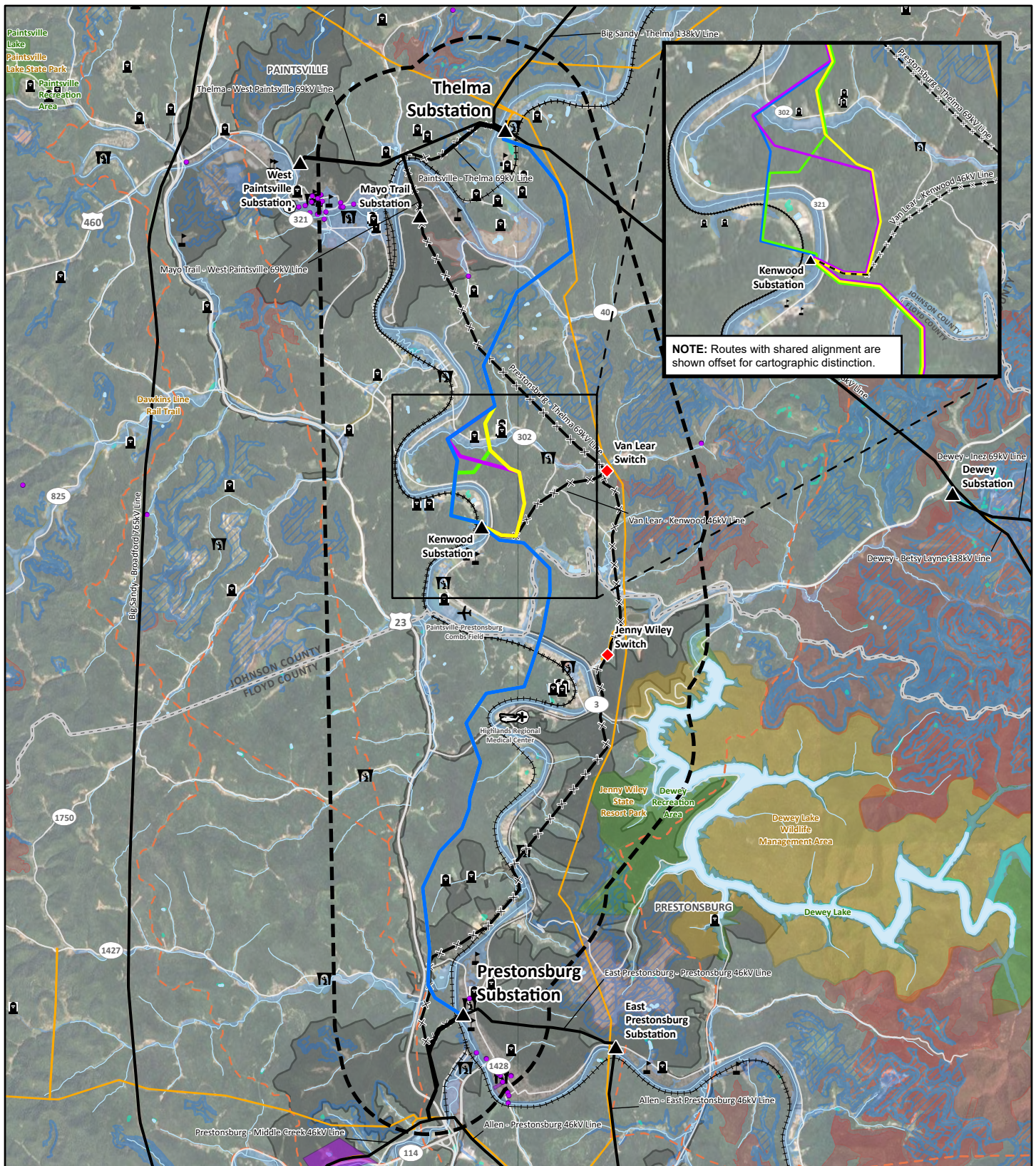
Imagery Source: ESRI Aerial Imagery

December 5, 2022



Aerial Map 25 of 25

**Prestonsburg - Thelma
Transmission Line
Rebuild Project**

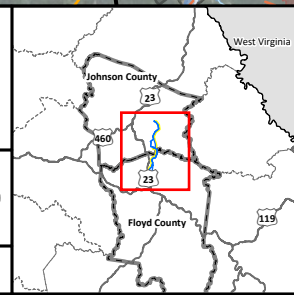


- | | |
|---|--|
| <ul style="list-style-type: none"> Option 4 Option 1 Option 2 Option 3 Study Area Existing Substation (AEP) Existing Switch Station (AEP) Existing Transmission Line To Be Removed (AEP) Existing Transmission Line (AEP) Existing Transmission Line To Be Rebuilt (AEP) Non-AEP Transmission Line Pipeline Railroad Airport Helipoint Historic Site (NRHP) | <ul style="list-style-type: none"> Historic District (NRHP) Hospital Place of Worship Cemetery/Burial Ground School Highway Stream (NHD) 100-year Floodplain (FEMA) Waterbody (NHD) Wetland (NWI) Permitted Surface Mine Boundary Permitted Underground Mine Boundary Federal Conservation Land (PAD-US) Local Conservation Land (PAD-US) State Conservation Land (PAD-US) City/Municipal Limit County Boundary |
|---|--|

City of Prestonsburg
Johnson and Floyd Counties, Kentucky

NAD 1983 2011 StatePlane Kentucky South FIPS 1602 FT US
Projection: Lambert Conformal Conic
Datum: NAD 1983 2011

November 18, 2025



**Map 1:
Alternative Routes**

**AMERICAN
ELECTRIC
POWER**

**Prestonsburg - Thelma
Transmission Line
Rebuild Project**

0 0.5 1 1.5 2
Miles