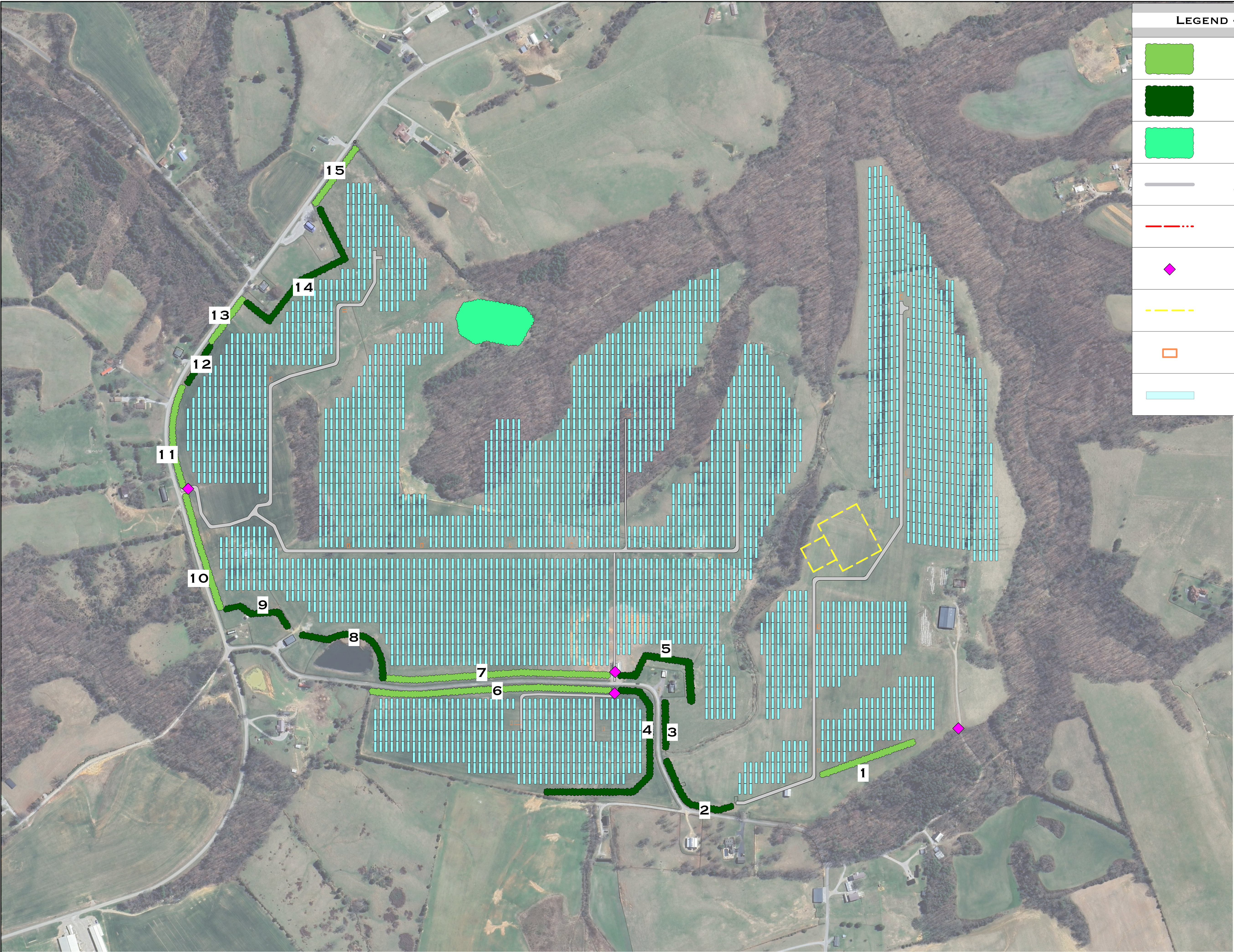


Appendix F

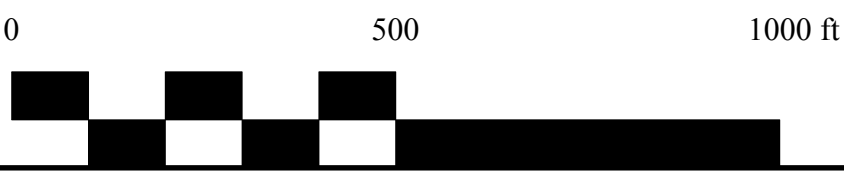
LANDSCAPE PLAN

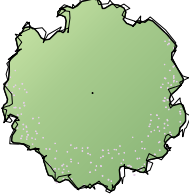
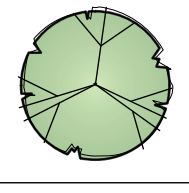
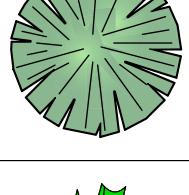
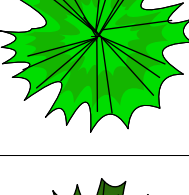
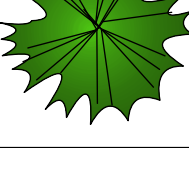
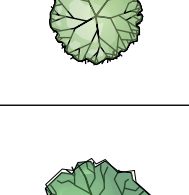

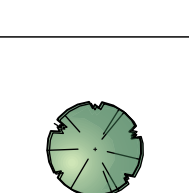

Barrelhead Solar, LLC

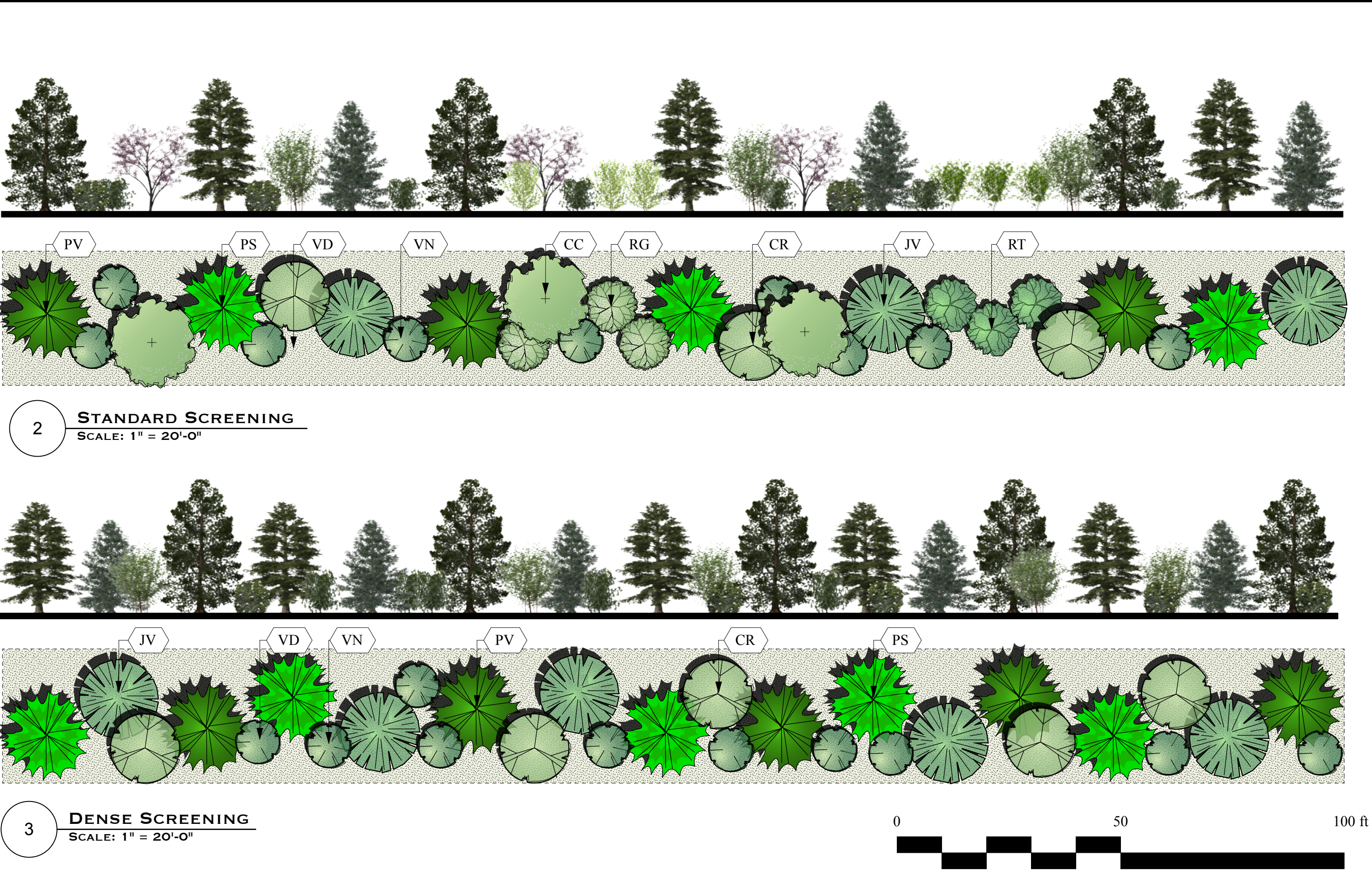
Wayne County, Kentucky



LEGEND - LANDSCAPE PLAN	
	STANDARD SCREENING
	HEAVY SCREENING
	POLLINATOR MEADOW
	ACCESS ROADS
	PROJECT BOUNDARY
	POINTS OF ACCESS
	SUBSTATION
	POWER INVERTERS
	SOLAR PANELS



PLANT LEGEND	
	CC <i>CERCIS CANADENSIS</i> EASTERN REDBUD
	CR <i>CORNUS RACEMOSA</i> GRAY DOGWOOD
	JV <i>JUNIPERUS VIRGINIANA</i> EASTERN RED CEDAR
	PS <i>PINUS STROBUS</i> EASTERN WHITE PINE
	PV <i>PINUS VIRGINIANA</i> VIRGINIA PINE
	RG <i>RHUS GLABRA</i> SMOOTH SUMAC
	RT <i>RHUS TYPHINA</i> STAGHORN SUMAC
	VD <i>VIBURNUM DENTATUM</i> ARROWWOOD VIBURNUM
	VN <i>VIBURNUM NUDUM</i> WITHEROD VIBURNUM



Quantities by Segment

Total Qty	Symbol	SEGMENT:														
		1	2	3	4	5	6	7	8	9	10	11	12	13	14	15
SF		17078	16458	8467	19081	23051	41337	38427	20085	12504	20668	17846	7947	9606	32319	12235
Acres		0.392	0.378	0.194	0.438	0.529	0.949	0.882	0.461	0.287	0.474	0.410	0.182	0.221	0.742	0.281
Linear Feet		569	549	282	636	768	1378	1281	670	417	689	595	265	320	1077	408

Conifers																
130	JV	5	8	4	20	12	13	12	10	6	6	6	4	3	17	4
130	PS	5	8	4	20	12	13	12	10	6	6	6	4	3	17	4
130	PV	5	8	4	20	12	13	12	10	6	6	6	4	3	17	4
390		15	24	12	60	36	39	36	30	18	18	18	12	9	51	12

Shrubs																
49	CC	5	0	0	0	0	13	12	0	0	6	6	0	3	0	4
130	CR	5	8	4	20	12	13	12	10	6	6	6	4	3	17	4
49	RG	5	0	0	0	0	13	12	0	0	6	6	0	3	0	4
49	RT	5	0	0	0	0	13	12	0	0	6	6	0	3	0	4
130	VD	5	8	4	20	12	13	12	10	6	6	6	4	3	17	4
180	VN	11	8	4	20	12	26	24	10	6	12	12	4	6	17	8
587		36	24	12	60	36	91	84	30	18	42	42	12	21	51	28
977	TTL	51	48	24	120	72	130	120	60	36	60	60	24	30	102	40

Plant Schedule

	ID	Qty	Common Name	Botanical Name	Plant Zones	Mature Height	Mature Width	Growth Habit	Scheduled Size
Conifers									
	JV	130	Eastern Red Cedar	<i>Juniperus virginiana</i>	3 4 5 6 7 8 9	35 - 50 ft.	12 - 20 ft.	Pyramidal	4-5' B&B / Container
	PS	130	Eastern White Pine	<i>Pinus strobus</i>	3 4 5 6 7 8 9	50 - 80 ft.	12 - 20 ft.	Pyramidal	5-6' B&B / Container
	PV	130	Virginia Pine	<i>Pinus virginiana</i>	4 5 6 7 8	15 - 35 ft.	12 - 20 ft.	Irregular	4-5' B&B / Container
Shrubs									
	CC	49	Eastern Redbud	<i>Cercis canadensis</i>	1 5 6 7 8 9	20 - 35 ft.	20 - 35 ft.	Round	4-5' B&B / Container
	CR	130	Gray Dogwood	<i>Cornus racemosa</i>	3 4 5 6 7 8	7 - 12 ft.	7 - 12 ft.	Rounded	3' B&B / Container
	RG	49	Smooth Sumac	<i>Rhus glabra</i>	2 3 4 5 6 7 8 9	7 - 12 ft.	7 - 12 ft.	Rounded	3' B&B / Container
	RT	49	Staghorn Sumac	<i>Rhus typhina</i>	4 5 6 7 8	12 - 20 ft.	12 - 20 ft.	Spreading	3' B&B / Container
	VD	130	Arrowwood Viburnum	<i>Viburnum dentatum</i>	2 3 4 5 6 7 8	4 - 7 ft.	4 - 7 ft.	Upright	3' B&B / Container
	VN	180	Witherod Viburnum	<i>Viburnum nudum</i>	5 6 7 8 9	7 - 12 ft.	7 - 12 ft.	Oval	3' B&B / Container

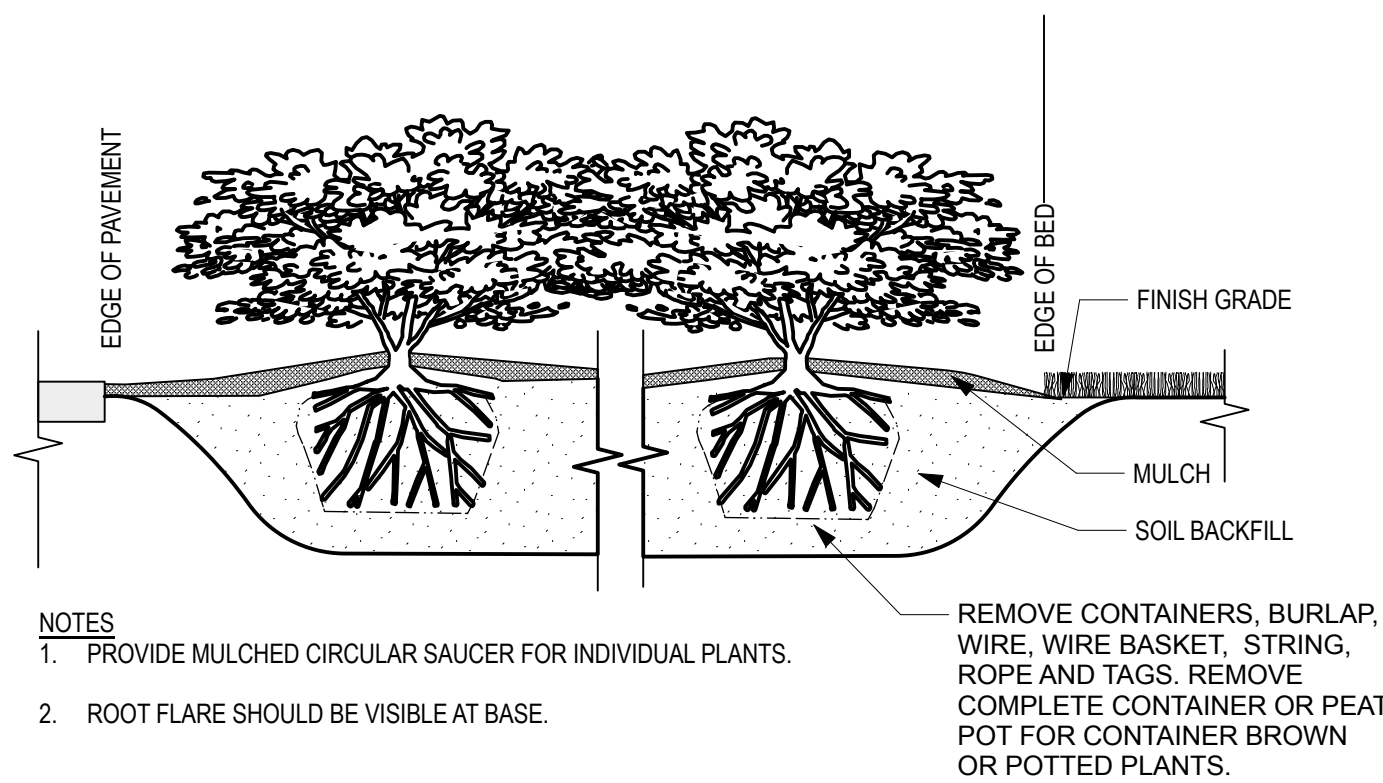
Vegetative Screening Notes:

Shrub and Tree Installation

- The contractor is responsible for the accurate layout of all work as outlined in these plans.
- All plant materials, unless specified otherwise, should have uniform branching and a strong, healthy root system. They must be free of defects, diseases, insect infestations, decay, pest eggs, or any signs of infestation. The plants should be in good health, show no transplant shock or visible wilting, and be fresh. Any plants that appear unhealthy will be rejected.
- All plant materials must meet the minimum requirements and standards outlined in the latest edition of "The American Standard for Nursery Stock" published by the American Association of Nurserymen, 1250 I Street, N.W., Suite 500, Washington, D.C. 20005.
- All container-grown stock must have been propagated in a container long enough for the root system to be sufficiently developed, allowing it to retain its soil. Any container stock with underdeveloped roots will be rejected.
- Plants must be prepared for shipment in a manner that ensures no damage to the bark, buds, branches, stems, or overall form of the stock. Container-grown plants should be transported in the containers they were grown in.
- If plants are not installed on the same day they arrive at the site, the contractor must store and protect them. Storage areas should be shaded and shielded from wind and sun. While on-site, plants should be kept moist by covering the balls or roots with wet burlap, moist sawdust, wood chips, shredded bark, peat moss, or other approved materials to prevent drying out.
- Plant substitutions may be made if necessary, based on availability, but must match the size and landscape (screening) value of the original plants. All substitutions must be approved by the owner or the owner's representative.
- The contractor is responsible for verifying all dimensions on-site.
- Planting shall not take place when the soil is frozen.

Planting Procedure:

- Dig the planting hole at least twice the width of the rootball for the first 12 inches of depth. Below 12 inches, widen the hole enough to allow for adjustment, but do not exceed the rootball's depth measured from base of root flare to bottom of ball.
- Holes for individual plantings should have vertical sides and a flat bottom. Ensure the sides and bottom of the planting hole are roughened or scarified.
- Lift and position the tree by the rootball only—do not lift by the trunk or use the trunk as leverage.
- Remove all foreign or non biodegradable material from root ball including top 1/3 of wire basket.
- Ensure burlap and twine is pulled away from trunk and any excess burlap removed.
- Backfill with soil that has been well-tilled or broken up to ensure proper settling.
- Pruning should be limited to the removal of dead, diseased, or broken limbs and must follow ANSI A300 specifications.
- Remove any remaining trunk wrap at planting and avoid placing any wraps around the trunk.
- The contractor is responsible for restoring areas disturbed during the installation of shrubs and trees.



Project Acceptance, Maintenance, and Warranty:

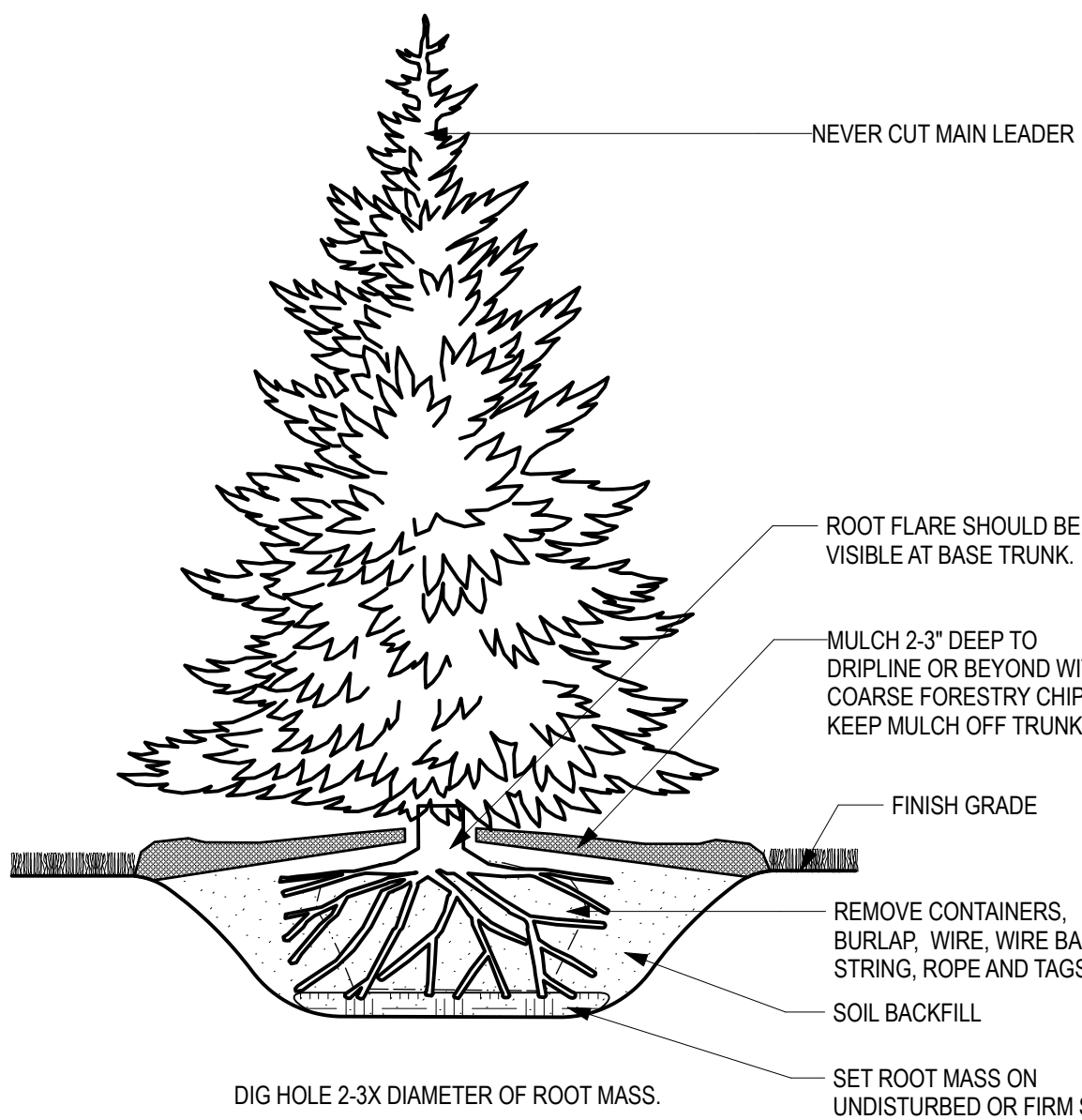
- Plant areas will be inspected upon completion of installation and will receive initial acceptance if they meet the specified materials and installation requirements. Once the complete installation of all plant material is initially accepted, the warranty period will commence.
- The contractor is responsible for maintaining the installed shrubs and trees within the project limits until final acceptance of the project by the engineer, which occurs at the end of the warranty period. Maintenance responsibilities include pruning, cultivating, weeding, watering, and ensuring plants remain free from insect infestations, diseases, and other damage from herbivores until final acceptance. The maintenance period will continue throughout the warranty period.
- The contractor warrants that plant material will remain alive and in healthy, vigorous condition for one (1) year following the initial acceptance. If planting occurs over multiple planting windows, the warranty will apply to all plant material based on the warranty period of the most recently installed plants.
- All plants deemed unsatisfactory by the owner's representative during the initial planting installation must be removed and immediately replaced.
- Any plants that are dead or severely unhealthy, as determined by the owner's representative, within the warranty period must be replaced immediately, following the drawings and specifications. These replacements are at the contractor's expense and should be installed during the next suitable planting season.
- Tree staking should be removed after one full growing season. If staking is necessary for replaced warranty plants, these stakes must be removed after one full growing season following their installation.
- The contractor is responsible for providing herbivory protection throughout the maintenance and warranty period. Any plants replaced due to herbivory damage will be at the contractor's expense.
- Upon final acceptance, plant maintenance responsibilities will be transferred to the owner.

PROJECT MEASUREMENT AND PAYMENT:

- Payment for planting will be based on the actual number of individual plants that are installed and maintained.
- All work under this item will be compensated at the contract unit price per plant. This price constitutes partial payment (90%) for all associated work, including materials, labor, warranty, and any other incidental items up to initial acceptance. The remaining 10% will be paid upon final acceptance, following the completion of the warranty period.

NOTES:

- Mature height, spread, and average annual growth are approximate. Actual size and growth rates may vary.
- Project is located in USDA planting zone 7a (Livingston County, Kentucky)
- Plant species shown reflect the design intent. Substitutions may be made based on the availability of local nursery stock. The contractor may propose alternative species, subject to approval by the landscape architect.



- NOTES
- PROVIDE MULCHED CIRCULAR SAUCER FOR INDIVIDUAL PLANTS.
 - GUYING AND STAKING TO BE DETERMINED IN THE FIELD BY THE LANDSCAPE ARCHITECT. LOCAL FIELD CONDITIONS AS WELL AS PLANT CHARACTERISTICS WILL DETERMINE THE NECESSITY OF GUYING AND STAKING.
 - TYPICALLY ONLY TREES WITH A 3" OR GREATER CALIPER NEED TO BE STAKED. TREES WITH LESS THAN A 3" CALIPER NEED TO BE STAKED ONLY AS A REQUIRED BY LANDSCAPE ARCHITECT.

DEARBORN & ASSOCIATES
LANDSCAPE ARCHITECTS & PLANNERS, INC.

PROJECT AREA:

PRELIMINARY LANDSCAPE

CLIENT NAME AND ADDRESS:

WAYNE COUNTY KENTUCKY

DATE:

8/13/25

SCALE:

AS NOTED

LS-2