

**Attachment A**

CONTEXT MAP

**Barrelhead Solar, LLC**

Wayne County, Kentucky



Coordinate System: NAD 1983 StatePlane Kentucky FIPS 1600 Feet  
 Projection: Lambert Conformal Conic  
 Datum: North American 1983  
 Sources: USDA, ESRI, USGS, CEC  
 8/11/2025



**COPPERHEAD**  
 ENVIRONMENTAL CONSULTING

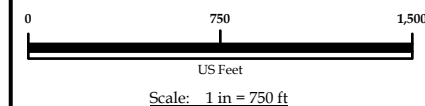
Prepared for:

## Barrelhead Solar, LLC

FIGURE 1:  
 Project Overview for the  
 Barrelhead Solar Project,  
 Wayne County, Kentucky.

### Legend

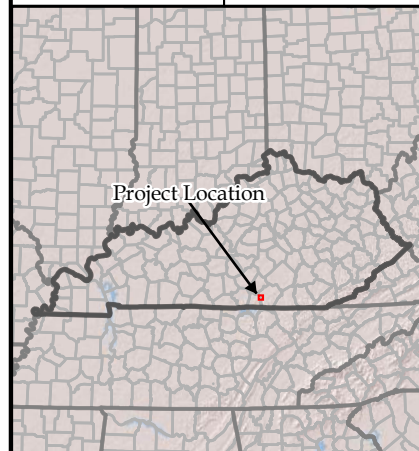
Project Boundary

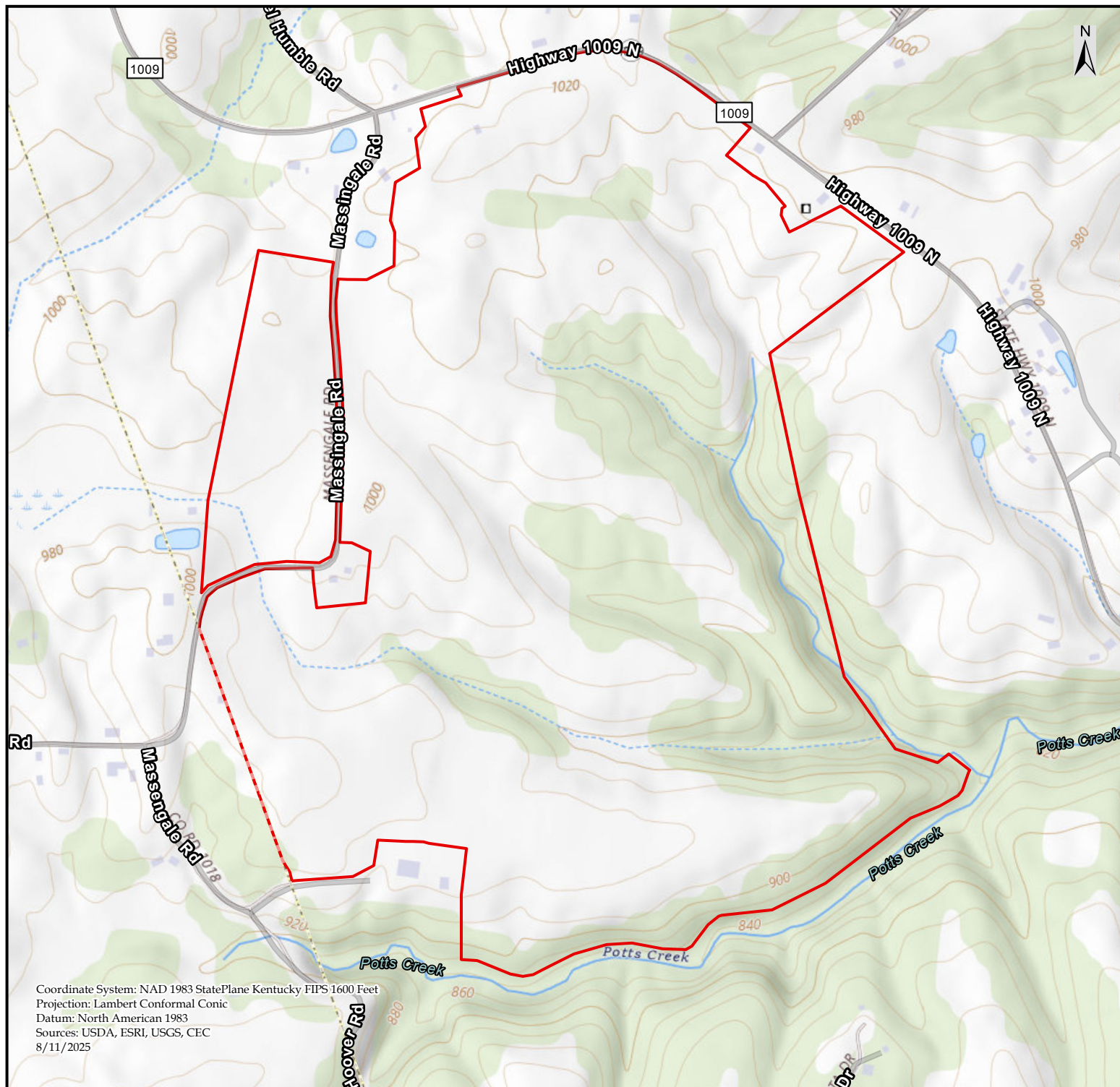


Prepared by :

Copperhead Environmental Consulting, Inc.  
 471 Main Street  
 P.O. Box 73  
 Paint Lick, Kentucky 40461

Drawn by:	CM	Date:	8/11/2025
Checked by:	KR	Revision:	03





Coordinate System: NAD 1983 StatePlane Kentucky FIPS 1600 Feet  
Projection: Lambert Conformal Conic  
Datum: North American 1983  
Sources: USDA, ESRI, USGS, CEC  
8/11/2025



**COPPERHEAD**  
ENVIRONMENTAL CONSULTING

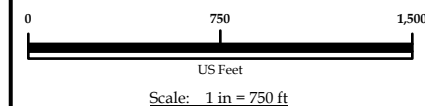
Prepared for:

## Barrelhead Solar, LLC

FIGURE 2:  
Project Overview for the  
Barrelhead Solar Project,  
Wayne County, Kentucky.

### Legend

 Project Boundary

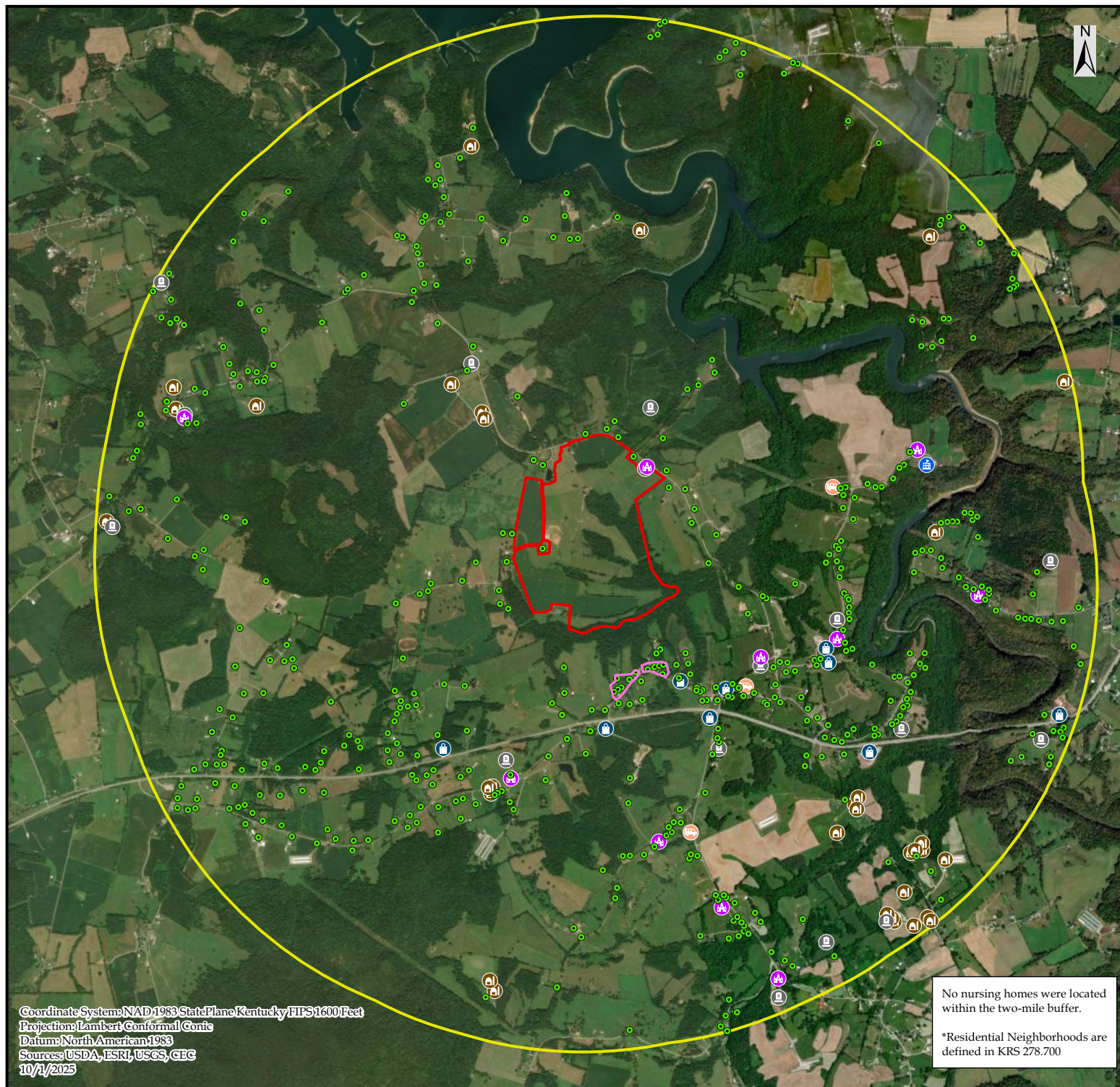


Prepared by :

Copperhead Environmental Consulting, Inc.  
471 Main Street  
P.O. Box 73  
Paint Lick, Kentucky 40461

Drawn by:	CM	Date:	8/11/2025
Checked by:	KR	Revision:	03





Coordinate System: NAD 1983 StatePlane Kentucky FIPS 1600 Feet  
 Projection: Lambert Conformal Conic  
 Datum: North American 1983  
 Sources: USDA, ESRI, USGS, CEC  
 10/1/2023

No nursing homes were located within the two-mile buffer.

\*Residential Neighborhoods are defined in KRS 278.700



**COPPERHEAD**  
 ENVIRONMENTAL CONSULTING

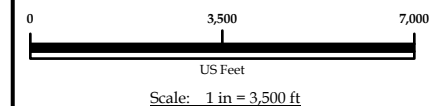
Prepared for:

## Barrelhead Solar, LLC

FIGURE 3:  
 Two-mile Vicinity Map for the  
 Barrelhead Solar Project,  
 Wayne County, Kentucky.

### Legend

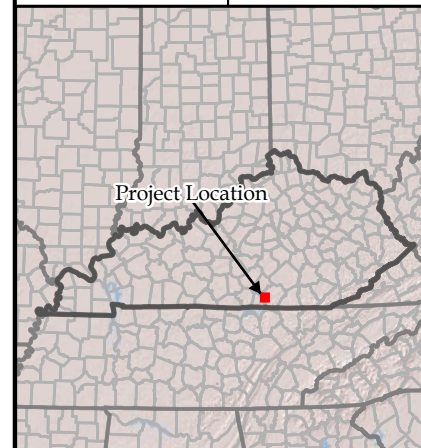
- Barn
- Cemetery
- Church
- Commercial
- School
- Utility
- Residential
- Residential Neighborhood
- Project Boundary
- 2 Mile Buffer

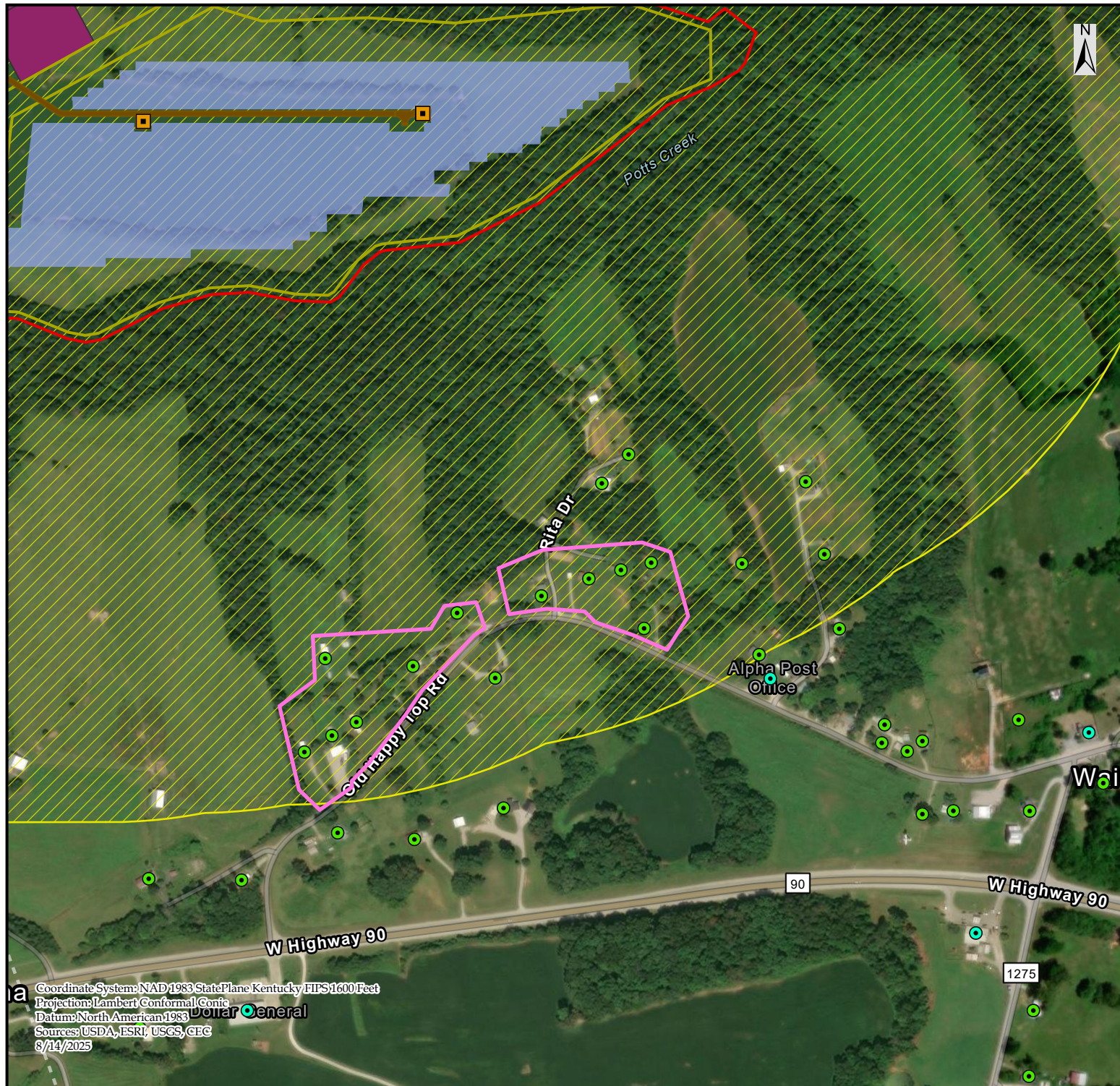


Prepared by :

Copperhead Environmental Consulting, Inc.  
 471 Main Street  
 P.O. Box 73  
 Paint Lick, Kentucky 40461

Drawn by:	CM	Date:	10/1/2025
Checked by:	KR	Revision:	01





**COPPERHEAD**  
 ENVIRONMENTAL CONSULTING

Prepared for:

## Barrelhead Solar, LLC

FIGURE 4:  
 Residential Neighborhoods  
 for the Barrelhead Solar Project,  
 Wayne County, Kentucky.

### Legend

- Commercial
  - Residence
  - Inverter
  - Residential Neighborhood
  - Fence
  - Project Road
  - Solar Array
  - Substation
  - 2000ft Buffer
  - Project Boundary
- 0 500 1,000  
 US Feet  
 Scale: 1 in = 500 ft

Prepared by :

Copperhead Environmental Consulting, Inc.  
 471 Main Street  
 P.O. Box 73  
 Paint Lick, Kentucky 40461

Drawn by: CM Date: 8/14/2025

Checked by: MM Revision: 05

