

Scale For Microfitting
Millimeters
Inches

ENERGY STORAGE SYSTEM DESCRIPTION	
NAMEPLATE	400 MW / 1600 MWh

MATERIAL LIST	
NUMBER OF TESLA MEGAPACK 2XL (BOL)	544
NUMBER OF TESLA MEGAPACK 2XL (EOL)	600
NUMBER OF MEDIUM VOLTAGE TRANSFORMERS (BOL)	136
NUMBER OF MEDIUM VOLTAGE TRANSFORMERS (EOL)	152

LEGEND:

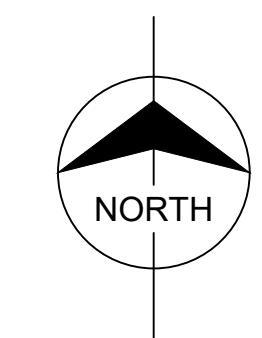
- PROPERTY LINE
- FENCE
- GATE

ABBREVIATION LIST:

- BESS - BATTERY ENERGY STORAGE SYSTEM
- BOL - BEGINNING OF LIFE
- EOL - END OF LIFE
- TYP - TYPICAL

NOTES:

1. FINAL LAYOUT SUBJECT TO CHANGE BASED ON FINAL ENVIRONMENTAL, CIVIL, GEOTECHNICAL, AND AUTHORITY HAVING JURISDICTION REQUIREMENTS.
2. EQUIPMENT QUANTITIES, CONFIGURATION, AND FOOTPRINT SUBJECT TO CHANGE BASED ON FINAL BESS TECHNOLOGY SELECTION AND ADDITIONAL PROJECT DUE DILIGENCE.
3. CIVIL GRADING AND STORMWATER NOT CONSIDERED IN LAYOUT DEVELOPMENT.
4. DESIGN MAINTAINS FACILITY NAMEPLATE RATING THROUGH YEAR 20. AUGMENTATION EVENTS OCCUR AT YEARS 12 AND 16.
5. WATER SUPPLY, SUCH AS TANKS, FIRE WATER LOOP, AND/OR HYDRANTS NOT INCLUDED OR CONSIDERED IN LAYOUT DEVELOPMENT.
6. WETLANDS, FLOODPLAINS, AND OTHER ENVIRONMENTAL CONSTRAINTS NOT CONSIDERED IN LAYOUT DEVELOPMENT.
7. LANDSCAPING NOT INCLUDED IN LAYOUT DEVELOPMENT.



KRISTIN L. GLIKBARG
 29371
 LICENSED PROFESSIONAL ENGINEER
 February 20, 2025

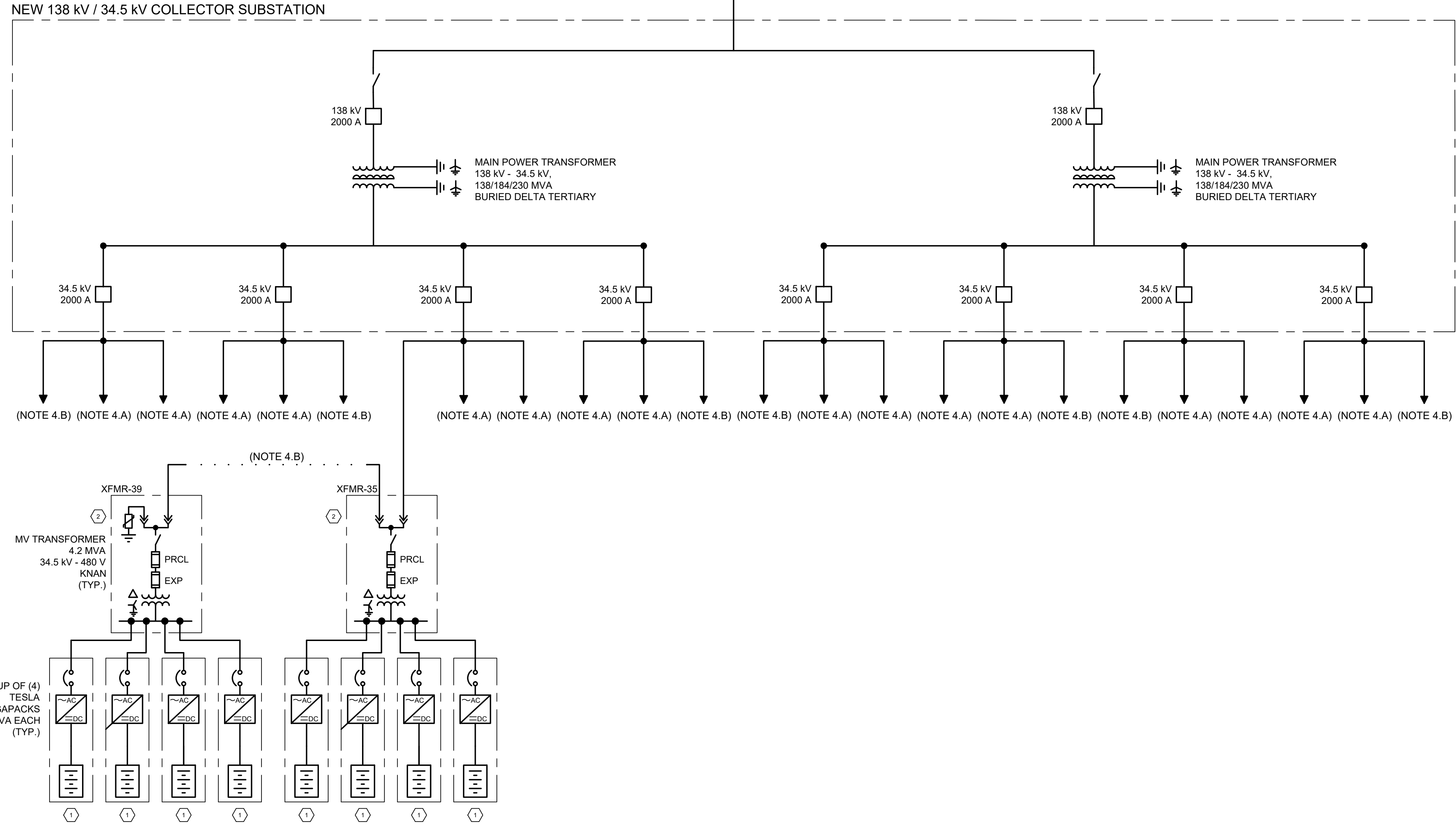
PRELIMINARY - NOT FOR CONSTRUCTION

no.	date	by	ckd	description
B	2/18/25	MDK	MJP	ISSUED FOR PSC FILING
A	12/05/24	MDK	RC	ISSUED FOR REVIEW

9400 WARD PARKWAY
 KANSAS CITY, MO 64114
 816-333-9400
 Burns & McDonnell Engineering Co., Inc.
 License No. 43
 designed: M. KELLEY
 detailed: M. KELLEY

LGE & KU
 PPL companies
 JEFFERSON COUNTY, KENTUCKY

LGE CANE RUN
 400 MW / 1600 MWH
 SITE LAYOUT
 project: _____ contract: _____
 drawing: _____ rev.: _____
LAYOUT - B
 sheet 1 of 1 sheets
 file LGEcaneRunLayout.dwg



Scale For Microfining
Millimeters
Inches

SYSTEM DESCRIPTION	
NAMEPLATE MW / MWH AT POI	400 MW / 1600 MWH

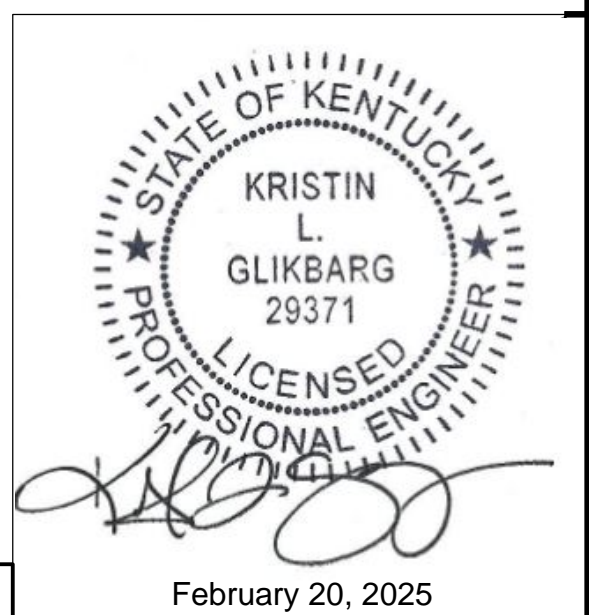
MATERIAL LIST		QTY.
1	TESLA MEGPACK 2XL P105 BESS ENCLOSURE. EACH ENCLOSURE CONTAINS 979 KW / 3916 KWH OF USABLE ENERGY. EACH ENCLOSURE IS RATED AT 1.05 MVA	544
2	MEDIUM VOLTAGE TRANSFORMER-4200 kVA, 34.5 kV(DELTA) - 480V(WYE GROUND)	136

- NOTES:**
- THIS DRAWING REPRESENTS ONE PROPOSED ARRANGEMENT AND IS SUBJECT TO CHANGE BASED ON DETAILED DESIGN.
 - THIS DRAWING IS CONCEPTUAL IN NATURE AND IS FOR PLANNING PURPOSES ONLY.
 - POWER EXPORT AT INVERTERS WILL BE CONTROLLED BY ENERGY MANAGEMENT SYSTEM TO MEET REAL AND REACTIVE POWER REQUIREMENTS AT POI.
 - A. STRING OF (6) MV TRANSFORMERS.
B. STRING OF (5) MV TRANSFORMERS.

- LEGEND:**
- SURGE ARRESTOR
 - FUSE
 - MV BREAKER
 - DISCONNECT SWITCH
 - POWER CABLE
 - CIRCUIT BREAKER
 - POWER TRANSFORMER
 - INVERTER
 - LI-ION BESS ENCLOSURE

- ABBREVIATIONS:**
- BESS - BATTERY ENERGY STORAGE SYSTEM
 - EXP - EXPULSION (FUSE)
 - PCS - POWER CONVERSION SYSTEM
 - POI - POINT OF INTERCONNECTION
 - PRCL - PARTIAL RANGE CURRENT-LIMITING (FUSE)
 - SWBD - SWITCHBOARD
 - XFMR - TRANSFORMER

PRELIMINARY - NOT FOR CONSTRUCTION



no.	date	by	ckd	description
A	01/31/25	MDK	MRA	ISSUED FOR PSC FILING

BURNS & MCDONNELL

9400 WARD PARKWAY
KANSAS CITY, MO 64114
816-333-9400
Burns & McDonnell Engineering Co., Inc.
License No. 43

designed: M. KELLEY
detailed: M. KELLEY

LGE & KU

PPL companies

JEFFERSON COUNTY, KENTUCKY

LGE CANE RUN 400 MW / 1600 MWH ONLINE DIAGRAM	
project	contract
drawing	rev.
ONLINE - A	
sheet 1 of 1	sheets
file LGECaneRunOnline.dwg	