

McKINNEY WATER DISTRICT

WATER MAIN CONNECTION

PHASE 1B -- HIGH PRESSURE MAIN

CONTRACT 2 -- KY HWY 1194 TO McKINNEY

SHEET LEGEND

COVER

8" MAIN TRUNK

6" WATER TOWER ROAD

4" MT. SALEM ROAD IMPROVEMENT

KY HWY 198 METER PRESSURE

GENEVA-MCKINNEY ROAD PRESSURE

ADD ALTERNATE 1-MCKINNEY RIDGE

4" MARTIN TRAIL INTER-CONNECT

ADD ALTERNATE 2-8" KY HWY 78

DETAILS SHEETS

DOT-GENERAL NOTES SHEETS

SHEETS 1-12

SHEET 13

SHEET 14

SHEET 15

SHEET 16

SHEETS 17-20

SHEET 21

SHEET 22-23

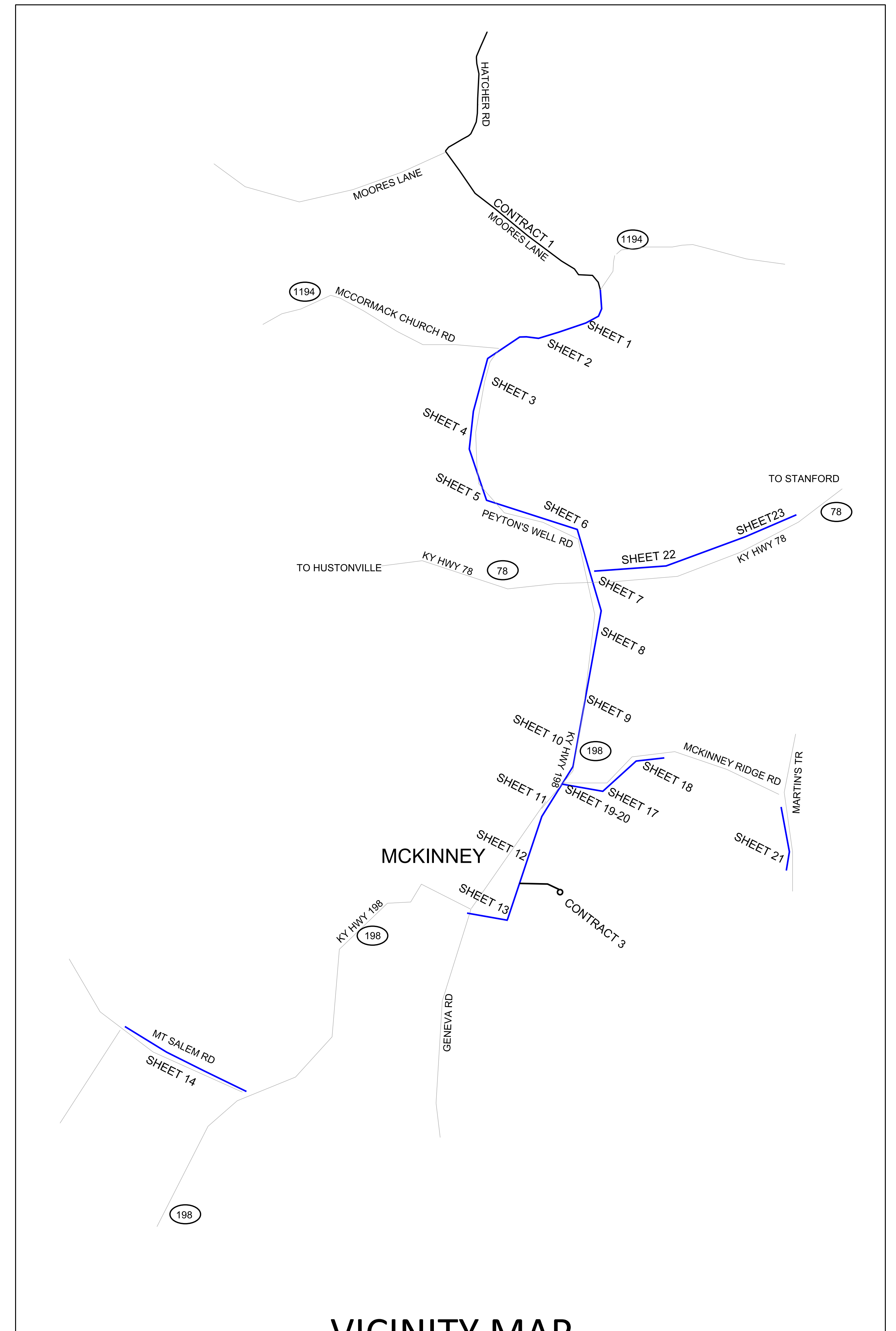
SHEETS 24-26

SHEETS 27

ENGINEER



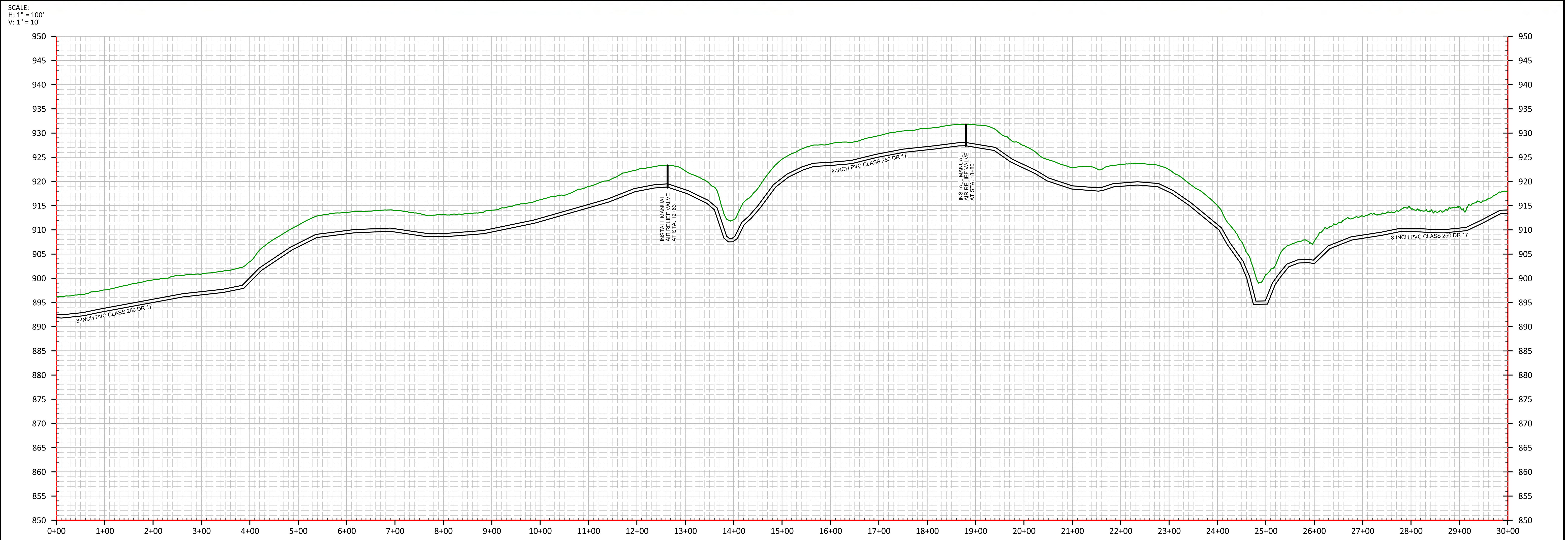
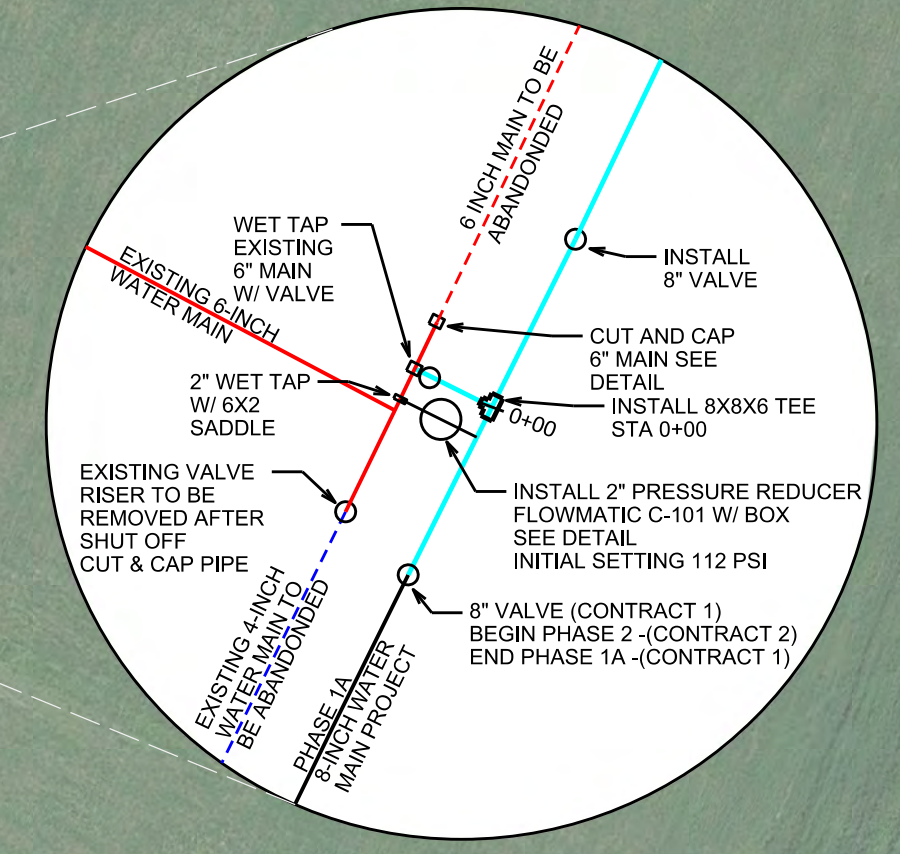
P.O. BOX 204
165 FOSTER LANE
STANFORD, KY 40484
PHONE (606) 365-8362
FAX (606) 365-1097



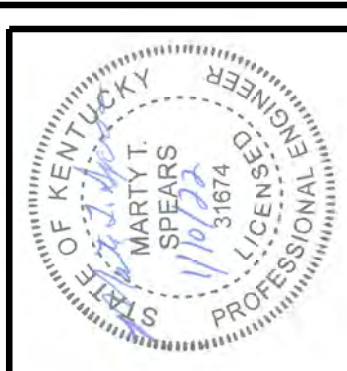
VICINITY MAP



- STA 0-10 - BEGIN CONSTRUCTION AT THE END OF CONTRACT 1 17,350 FEET OF 8-INCH DR 17 CLASS 250 PVC PIPE 17,837 FEET OF 8-INCH DR 21 CLASS 200 PVC PIPE 150 FT OF 10-INCH DR 9 HDPE PIPE
- STA 0-03 - INSTALL 2-INCH TAP AND SADDLE (SEE DETAIL) STA 0-03 - INSTALL 2-INCH PRESSURE REDUCER WITH BOX (SEE DETAIL) STA 0-03 LT - INSTALL 2-INCH WET TAP AND SADDLE (SEE DETAIL) STA 0+08 LT - TURN OFF VALVE REMOVE VALVE RISERS AFTER ABANDONEMENT
- STA 0+00 - INSTALL 8X8X6 TEE STA 0+00 LT - INSTALL 6-INCH WET TAP AND MJ SADDLE (SEE DETAIL) STA 0+04 LT - INSTALL 6-INCH CUT AND CAP (SEE DETAIL) STA 0+04 LT - INSTALL 6 FT OF 6-INCH SDR 17 PVC PIPE STA 0+10 LT - INSTALL 8-INCH GATE VALVE STA 11+25 - REPAIR EXISTING GRAVEL DRIVE (2T) STA 14+00 REPAIR 20 FT WOVEN WIRE FENCE STA 15+00 REPAIR 20 FT WOVEN WIRE FENCE
- STA 12+63 - INSTALL AIR RELEASE (SEE MANUAL DETAIL) STA 13+55 - RECONNECT METER PRESSURE REDUCER (SEE DETAIL) STA 18+80 - INSTALL AIR RELEASE (SEE MANUAL DETAIL) STA 18+68 - RECONNECT METER PRESSURE REDUCER (SEE DETAIL) STA 19+68 - RECONNECT METER PRESSURE REDUCER (SEE DETAIL)
- STA 21+40 - RECONNECT METER PRESSURE REDUCER (SEE DETAIL) STA 21+60 - REPAIR EXISTING GRAVEL DRIVE (2T) STA 26+25 - RECONNECT METER PRESSURE REDUCER (SEE DETAIL) STA 25+66 - REPAIR EXISTING ASPHALT DRIVE (90 SQ FT)



SCALE:
H: 1" = 100'
V: 1" = 10'



DATE: 10/04/19
SCALE: 1" = 100'
DRAWN BY: M.S.
APPROVED BY: GOOCH
FILENAME: 18298PH2

**CONTRACT 2 - PHASE 1B WATER PROJECT
DANVILLE TO MCKINNEY CONNECTION
8" WATER MAIN
STANFORD, LINCOLN COUNTY, KENTUCKY**

CLIENT:
MCKINNEY WATER DISTRICT
2900 MIDDLEBURG RD
MCKINNEY, KY 40448

P.O. BOX 204
165 FOSTER LANE
STANFORD, KY 40484
PHONE (606) 365-8362
FAX (606) 365-1097



REVISION(S)



DATE: 10/04/19
 SCALE: 1" = 100'
 DRAWN BY: M.S.
 APPROVED BY: GOOCH
 FILENAME: 18298PH2

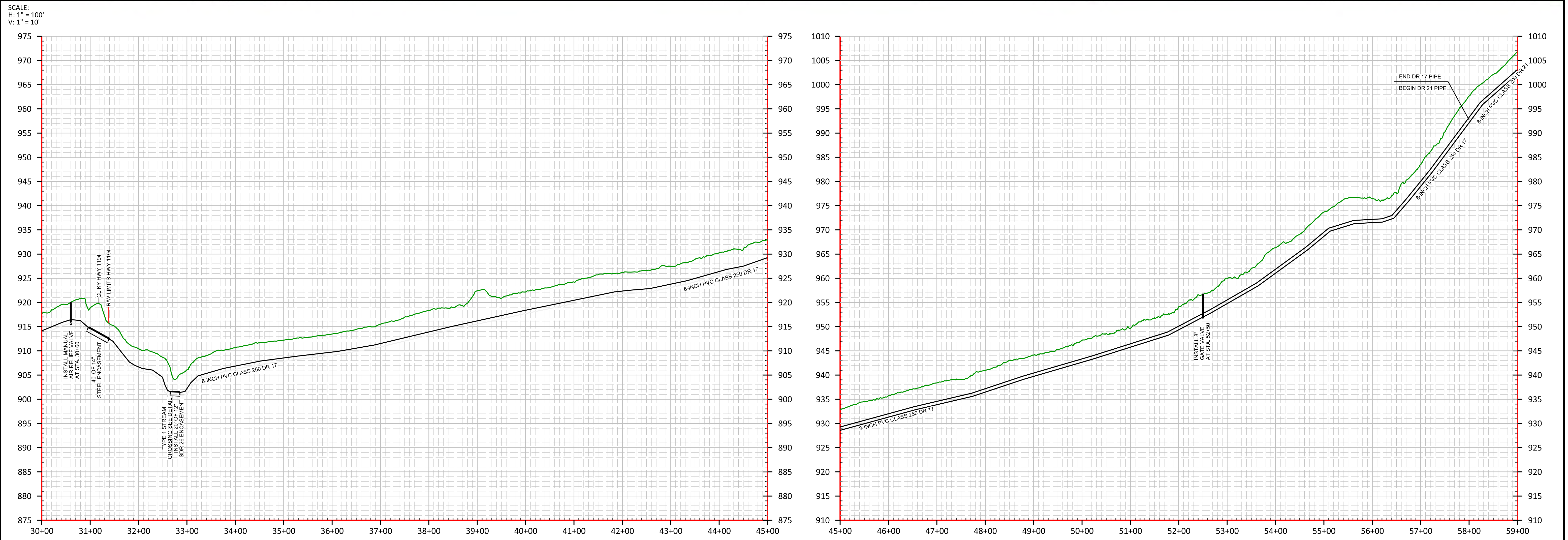
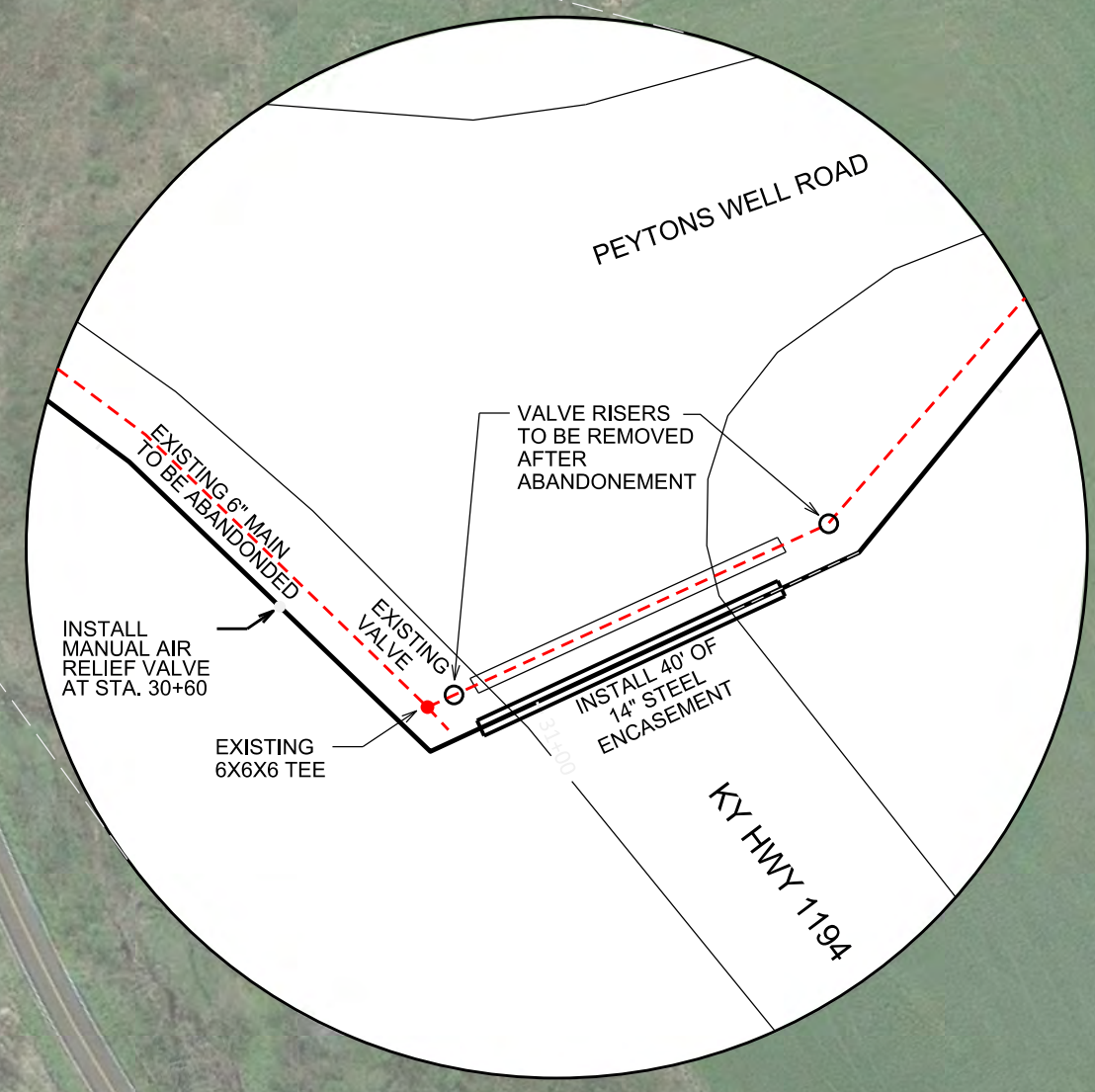
CONTRACT 2 - PHASE 2 WATER PROJECT
DANVILLE TO MCKINNEY CONNECTION
8" WATER MAIN
STANFORD, LINCOLN COUNTY, KENTUCKY

CLIENT:
 MCKINNEY WATER DISTRICT
 2900 MIDDLEBURG RD
 MCKINNEY, KY 40448

P.O. BOX 204
 165 FOSTER LANE
 STANFORD, KY 40464
 PHONE (606) 365-8362
 FAX (606) 365-1097



REVISION(S)





STA 64+10 - INSTALL AIR RELEASE
(SEE AUTOMATIC DETAIL)

STA 68+17 LT - REMOVE VALVE
RISERS AFTER ABANDONEMENT

STA 78+60 - RECONNECT METER
PRESSURE REDUCER (SEE DETAIL)

STA 84+05 - GAS MAIN CROSSING

STA 87+63 - INSTALL AIR RELEASE
(SEE AUTOMATIC DETAIL)

STA 64+26 - RECONNECT METER
PRESSURE REDUCER (SEE DETAIL)

STA 68+14 LT - REMOVE AIR
RELEASE AFTER ABANDONEMENT

STA 84+73 - GAS MAIN CROSSING

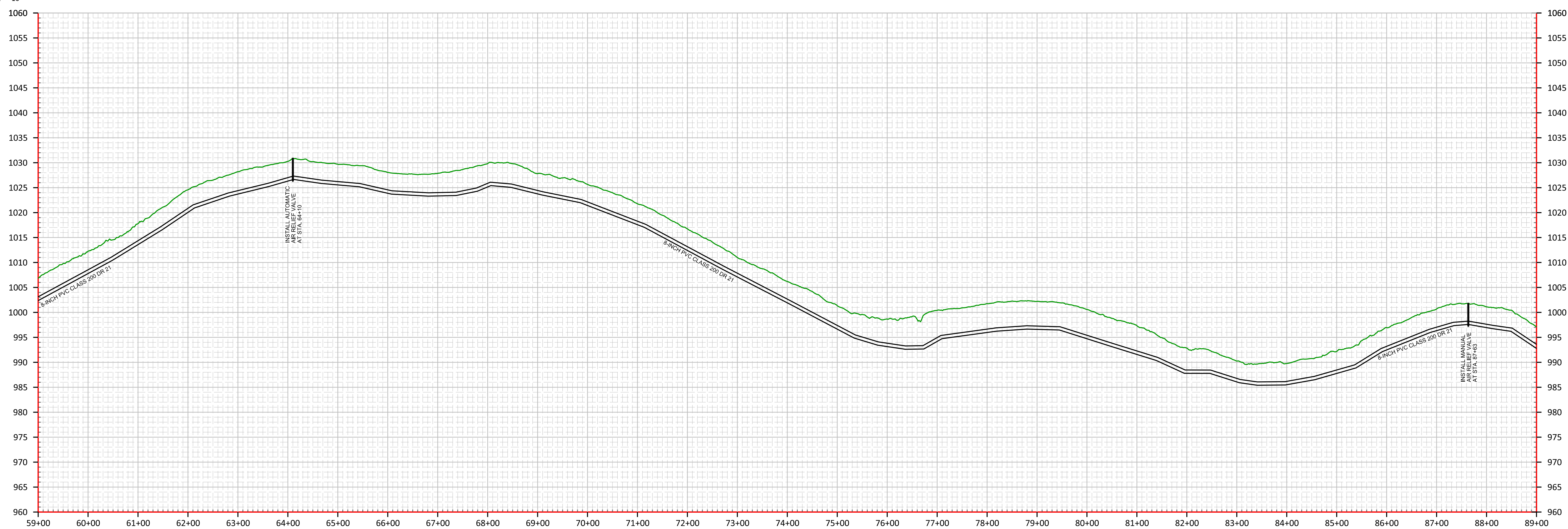
STA 65+10 - REPAIR EXISTING
GRAVEL DRIVE (2T)

STA 69+74 - RECONNECT METER
PRESSURE REDUCER (SEE DETAIL)

STA 62+50 - REPAIR EXISTING
GRAVEL DRIVE (4T)



SCALE:
H: 1" = 100'
V: 1" = 10'



DATE: 10/04/19
SCALE: 1" = 100'
DRAWN BY: M.S.
APPROVED BY: GOOCH
FILENAME: 18298PH2

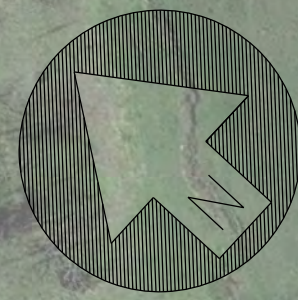
CONTRACT 2 - PHASE 1B WATER PROJECT
DANVILLE TO MCKINNEY CONNECTION
8" WATER MAIN
STANFORD, LINCOLN COUNTY, KENTUCKY

CLIENT:
MCKINNEY WATER DISTRICT
2900 MIDDLEBURG RD
MCKINNEY, KY 40448

P.O. BOX 204
165 FOSTER LANE
STANFORD, KY 40464
PHONE (606) 365-8362
FAX (606) 365-1097



REVISION(S)



STA 100+16 LT- INSTALL 8-INCH GATE VALVE

STA 100-20 RT- INSTALL 2-INCH PRESSURE REDUCER WITH BOX (SEE DETAIL)
STA 100-20 RT- INSTALL 2-INCH WET TAP AND SADDLE (SEE DETAIL)

STA 100+24 - INSTALL 8X4X8 TEE
STA 100+24 - INSTALL 8 FT OF 4" SDR 17 PVC PIPE

STA 100+24 RT - INSTALL 4-INCH WET TAP AND WJ SADDLE (SEE DETAIL)
STA 100+24 RT- INSTALL 4-INCH CUT AND CAP (SEE DETAIL)

STA 103+50 - REPAIR EXISTING GRAVEL DRIVE (20T)

STA 103+30 - RECONNECT METER PRESSURE REDUCER (SEE DETAIL)

STA 108+10 LT- INSTALL 8-INCH GATE VALVE
STA 107+90 RT - REMOVE VALVE RISERS AFTER ABANDONEMENT

STA 107+96 RT - REMOVE VALVE RISERS AFTER ABANDONEMENT

STA 107-80 - INSTALL 2-INCH TAP AND SADDLE (SEE DETAIL)

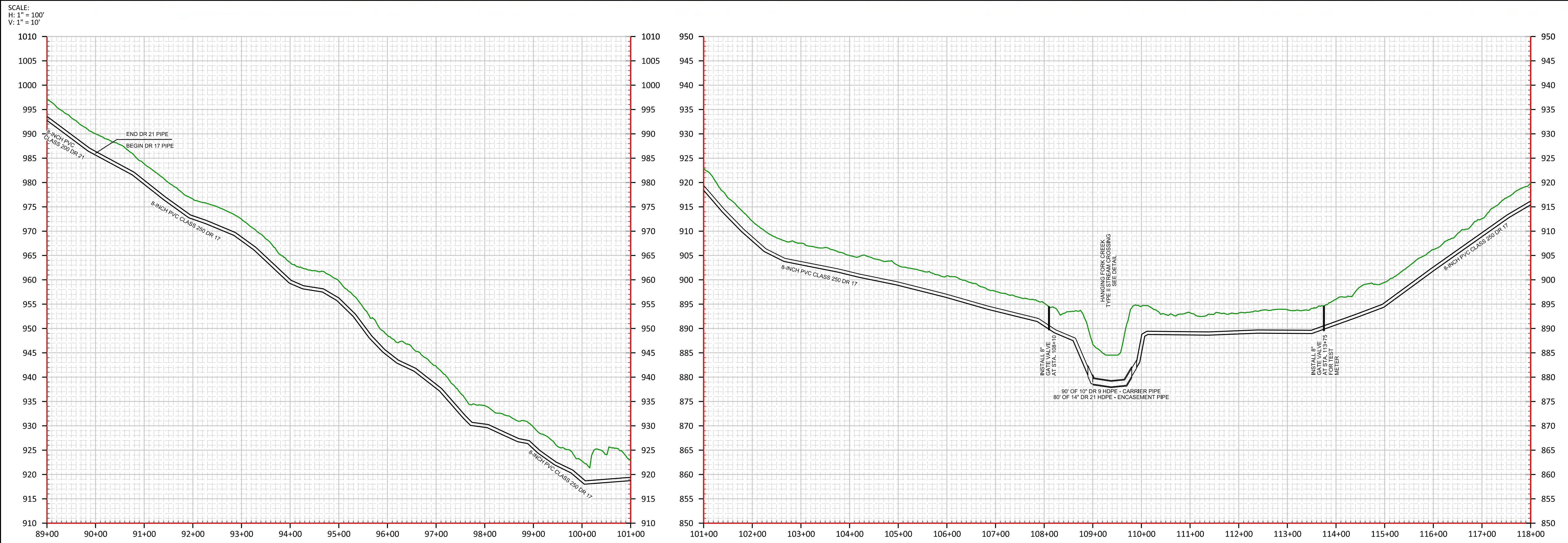
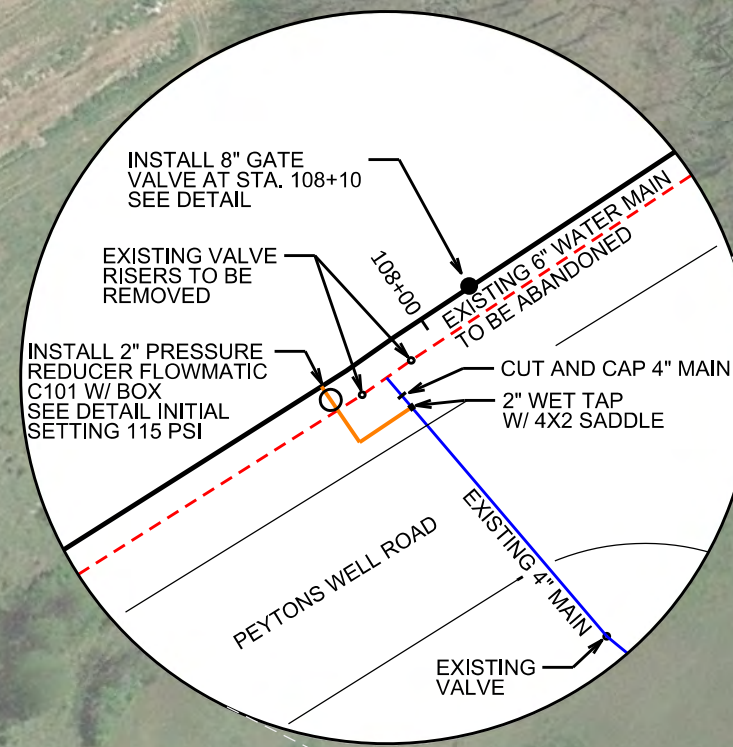
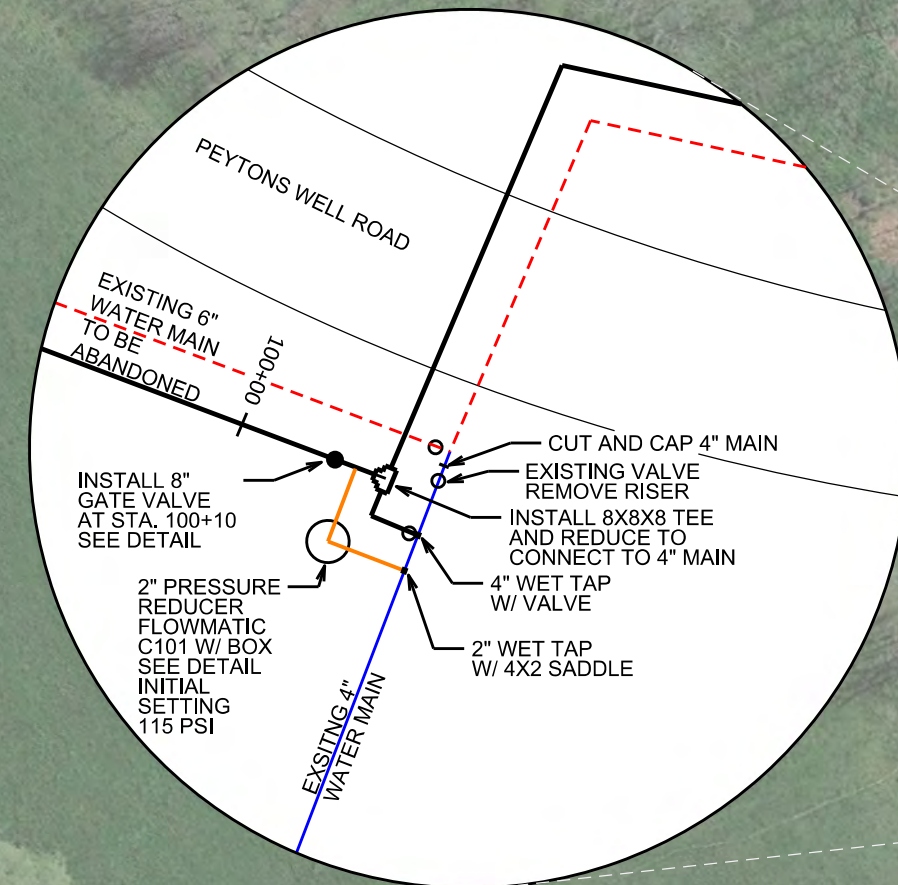
STA 107-80 RT - INSTALL 2-INCH PRESSURE REDUCER WITH BOX (SEE DETAIL)
STA 107-90 RT- INSTALL 2-INCH WET TAP AND SADDLE (SEE DETAIL)

STA 107+90 RT- INSTALL 4-INCH CUT AND CAP (SEE DETAIL)

STA 109+00 TO STA 109+90 - INSTALL TYPE II STREAM CROSSING 90 FT OF DR 9 HDPE PIPE (SEE DETAIL)
STA 113+75 - INSTALL 8-INCH GATE VALVE WITH TEST METER (SEE DETAIL)

STA 113+80 - RECONNECT METER PRESSURE REDUCER (SEE DETAIL)
STA 114+80 - RECONNECT METER PRESSURE REDUCER (SEE DETAIL)

STA 114+00 - REPAIR EXISTING GRAVEL DRIVE (5T)
STA 114+50 - REPAIR EXISTING GRAVEL DRIVE (5T)



DATE: 10/04/19
SCALE: 1" = 100'
DRAWN BY: M.S.
APPROVED BY: GOOCH
FILENAME: 18298PHZ

CONTRACT 2 - PHASE 1B WATER PROJECT
DANVILLE TO MCKINNEY CONNECTION
8" WATER MAIN
STANFORD, LINCOLN COUNTY, KENTUCKY

CLIENT: MCKINNEY WATER DISTRICT
2900 MIDDLEBURG RD
MCKINNEY, KY 40448

P.O. BOX 204
165 FOSTER LANE
STANFORD, KY 40484
PHONE (606) 365-8362
FAX (606) 365-1097



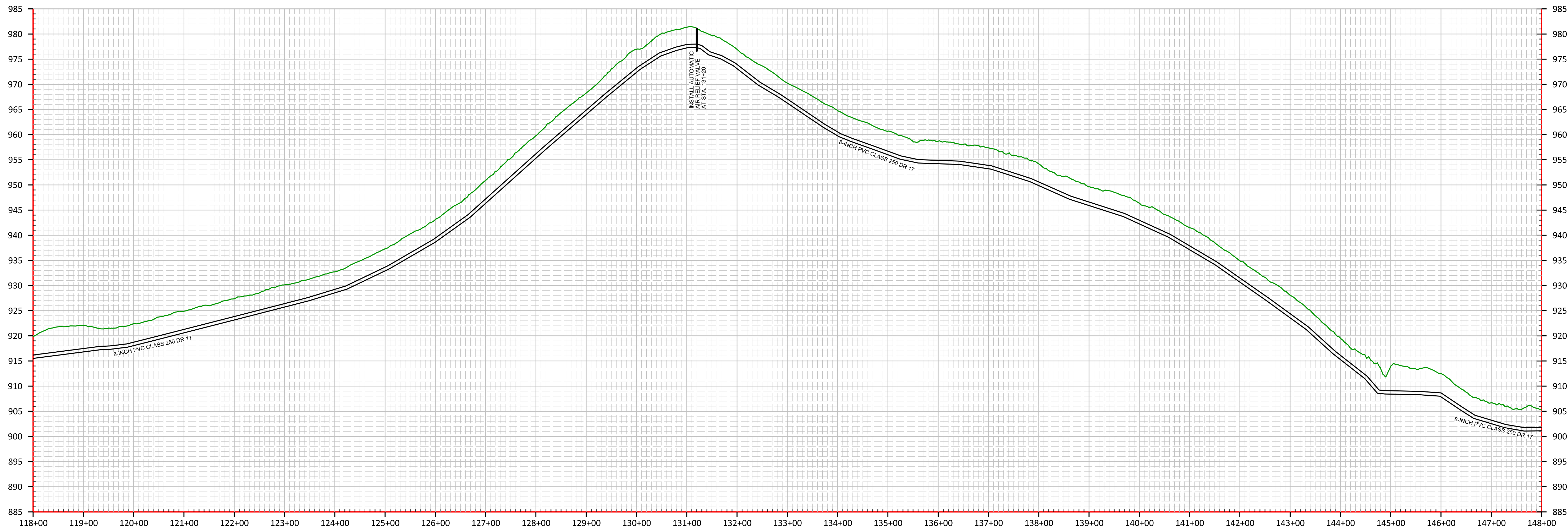
REVISION(S)



STA 130+42 - RECONNECT METER PRESSURE REDUCER (SEE DETAIL)
 STA 144+92 - RECONNECT METER PRESSURE REDUCER (SEE DETAIL)
 STA 131+20 - INSTALL AIR RELEASE (SEE AUTOMATIC DETAIL)
 STA 148+20 - RECONNECT METER PRESSURE REDUCER (SEE DETAIL)
 STA 133+44 RT - REMOVE VALVE RISERS AFTER ABANDONEMENT
 STA 131+00 - REPAIR EXISTING GRAVEL DRIVE (5T)
 STA 132+00 - REPAIR EXISTING GRAVEL DRIVE (3T)



SCALE:
 H: 1" = 100'
 V: 1" = 10'



DATE: 10/04/19
 SCALE: 1" = 100'
 DRAWN BY: M.S.
 APPROVED BY: GOOCH
 FILENAME: 18298PHZ

CONTRACT 2 - PHASE 1B WATER PROJECT
DANVILLE TO MCKINNEY CONNECTION
8" WATER MAIN
STANFORD, LINCOLN COUNTY, KENTUCKY

CLIENT:
 MCKINNEY WATER DISTRICT
 2900 MIDDLEBURG RD
 MCKINNEY, KY 40448

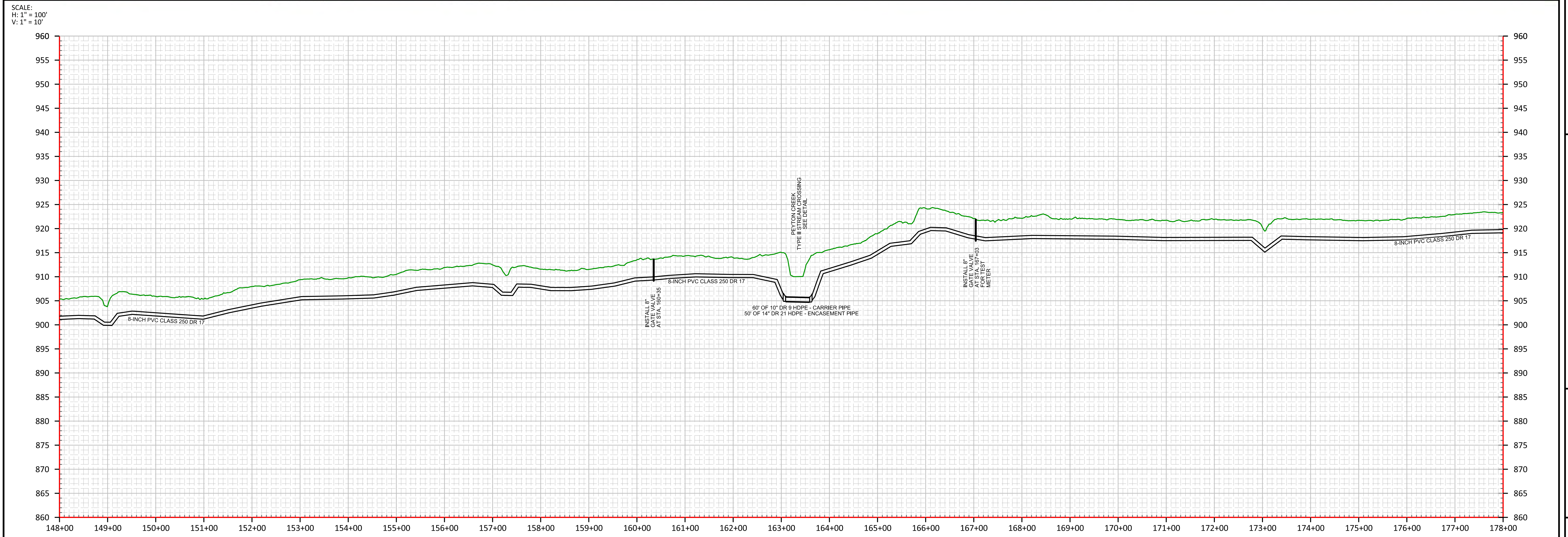
P.O. BOX 204
 165 FOSTER LANE
 STANFORD, KY 40464
 PHONE (606) 365-8362
 FAX (606) 365-1097



REVISION(S)



- STA 148+20 - RECONNECT METER PRESSURE REDUCER (SEE DETAIL)
- STA 153+09 - RECONNECT METER PRESSURE REDUCER (SEE DETAIL)
- STA 153+47 - RECONNECT METER PRESSURE REDUCER (SEE DETAIL)
- STA 149+25 - REPAIR EXISTING CONCRETE DRIVE (120 SQ FT)
- STA 160+35 - INSTALL 8-INCH GATE VALVE
- STA 163+08 TO STA 163+68 - INSTALL TYPE II STREAM CROSSING 60 FT OF DR 9 HDPE PIPE (SEE DETAIL)
- STA 167+03 - INSTALL 8-INCH GATE VALVE WITH TEST METER (SEE DETAIL)
- STA 151+00 - REPAIR EXISTING GRAVEL DRIVE (2T)
- STA 153+25 - REPAIR EXISTING GRAVEL DRIVE (3T)
- STA 167+08 - RECONNECT METER PRESSURE REDUCER (SEE DETAIL)
- STA 168+40 - REPAIR EXISTING GRAVEL DRIVE (4T)
- STA 172+00 - REPAIR EXISTING GRAVEL DRIVE (2T)



SCALE:
H: 1" = 100'
V: 1" = 10'



DATE: 10/04/19
SCALE: 1" = 100'
DRAWN BY: M.S.
APPROVED BY: GOOCH
FILENAME: 18258PH2

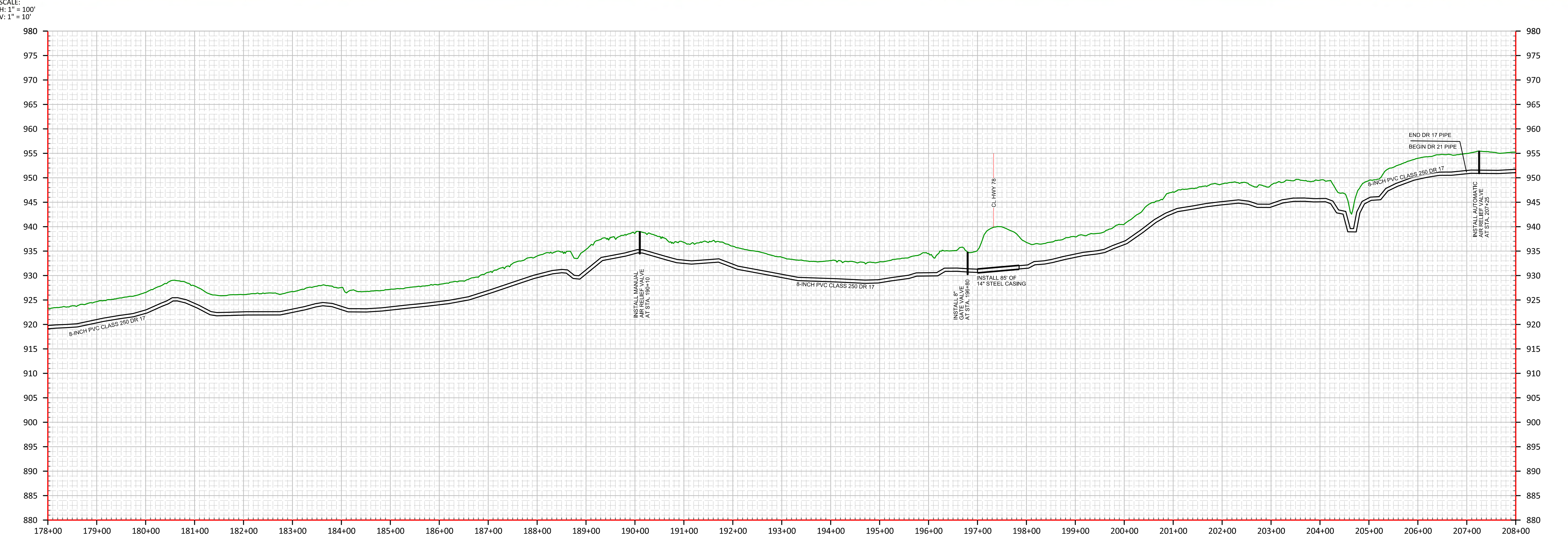
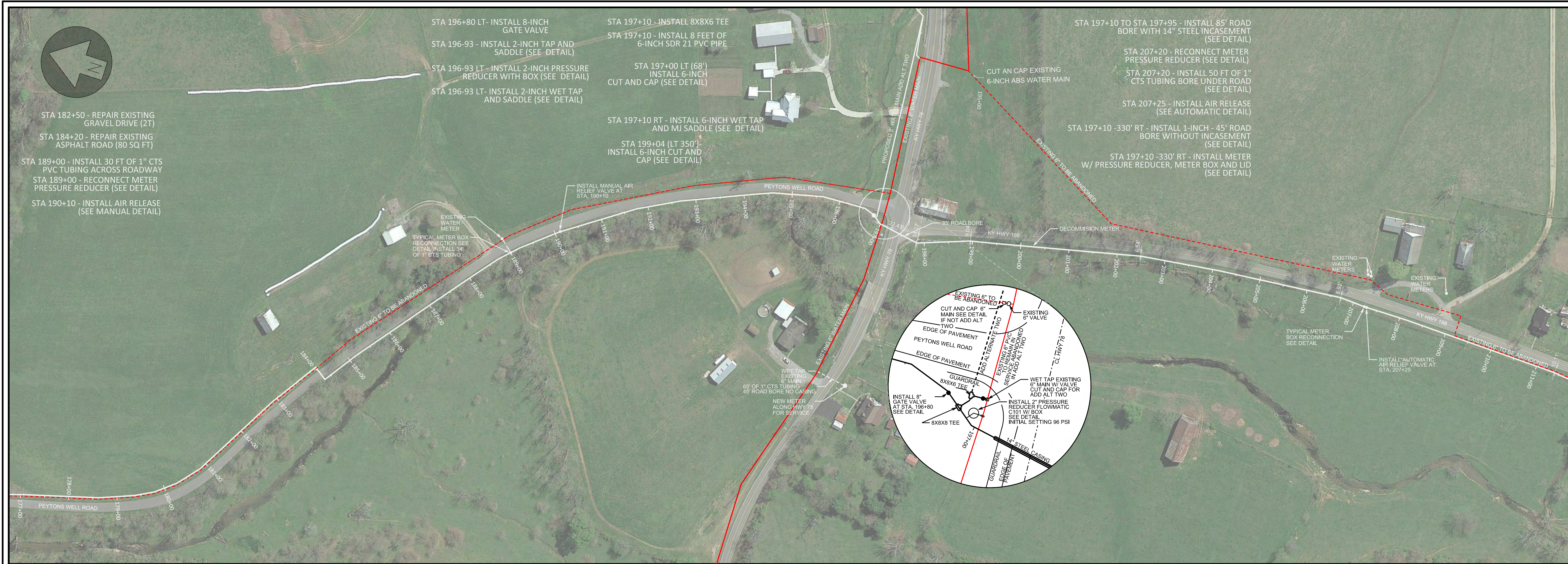
CONTRACT 2 - PHASE 1B WATER PROJECT
DANVILLE TO MCKINNEY CONNECTION
8" WATER MAIN
STANFORD, LINCOLN COUNTY, KENTUCKY

CLIENT:
MCKINNEY WATER DISTRICT
2900 MIDDLEBURG RD
MCKINNEY, KY 40448

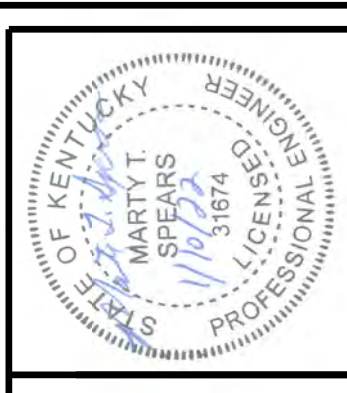
P.O. BOX 204
165 FOSTER LANE
STANFORD, KY 40464
PHONE (606) 365-8362
FAX (606) 365-1097



REVISION(S)



SCALE:
H: 1" = 100'
V: 1" = 10'



DATE: 04/24/20
SCALE: 1" = 100'
DRAWN BY: M.S.
APPROVED BY: GOOCH
FILENAME: 18298PH2

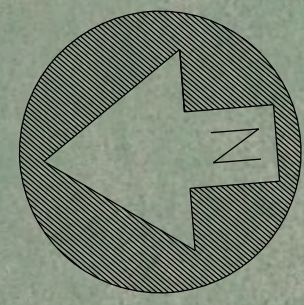
CONTRACT 2 - PHASE 1B WATER PROJECT
DANVILLE TO MCKINNEY CONNECTION
8" WATER MAIN
STANFORD, LINCOLN COUNTY, KENTUCKY

CLIENT:
MCKINNEY WATER DISTRICT
2900 MIDDLEBURG RD
MCKINNEY, KY 40448

P.O. BOX 204
165 FOSTER LANE
STANFORD, KY 40464
PHONE (606) 365-8362
FAX (606) 365-1097



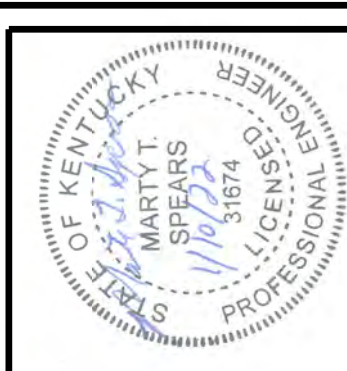
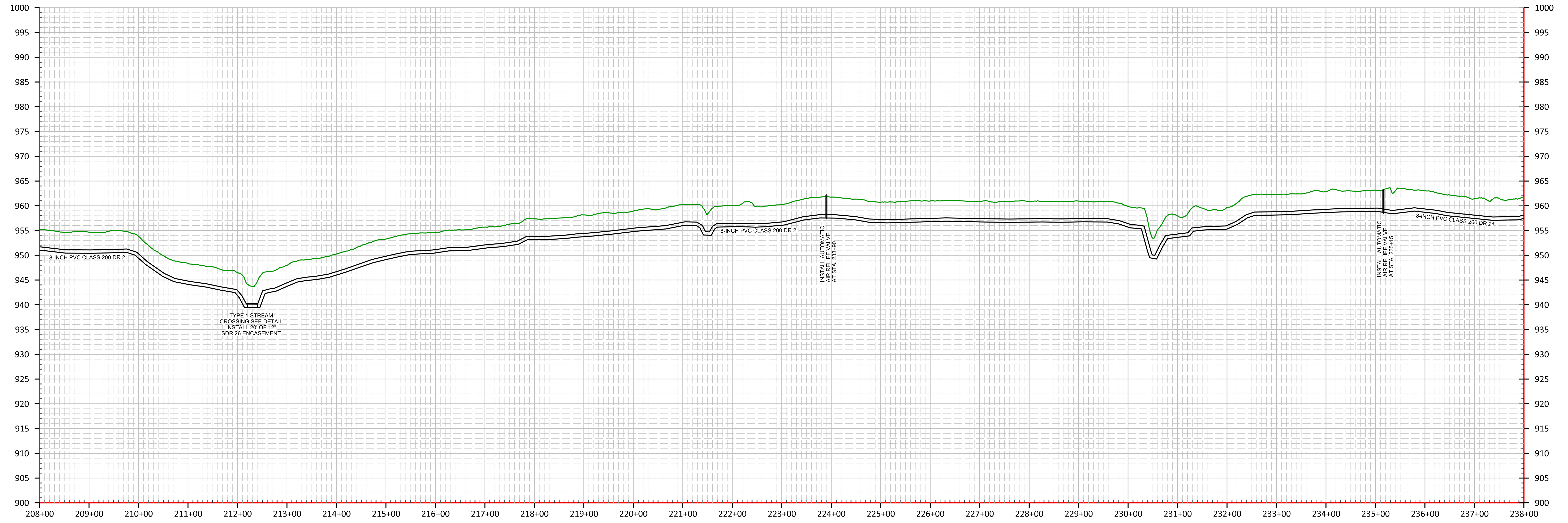
REVISION(S)



- STA 208+80 - RECONNECT METER PRESSURE REDUCER (SEE DETAIL)
- STA 208+80 - INSTALL 77 FT OF 1" CTS TUBING BORE UNDER ROAD (SEE DETAIL)
- STA 210+60 - RECONNECT METER PRESSURE REDUCER (SEE DETAIL)
- STA 210+60 - INSTALL 36 FT OF 1" CTS TUBING BORE UNDER ROAD (SEE DETAIL)
- STA 212+34 - INSTALL TYPE 1 STREAM CROSSING (SEE DETAIL)
- STA 217+95 - RECONNECT METER PRESSURE REDUCER (SEE DETAIL)
- STA 219+85 - RECONNECT METER PRESSURE REDUCER (SEE DETAIL)
- STA 221+45 - RECONNECT METER PRESSURE REDUCER (SEE DETAIL)
- STA 223+45 - RECONNECT METER PRESSURE REDUCER (SEE DETAIL)
- STA 217+95 TO STA 221+55 - REPAIR EXISTING GRAVEL DRIVE (65T)
- STA 222+20 TO STA 222+55 - REPAIR EXISTING GRAVEL DRIVE (10T)
- STA 233+90 - INSTALL AIR RELEASE (SEE AUTOMATIC DETAIL)
- STA 234+78 - RECONNECT METER PRESSURE REDUCER (SEE DETAIL)
- STA 237+50 - RECONNECT METER PRESSURE REDUCER (SEE DETAIL)
- STA 235+15 - INSTALL AIR RELEASE (SEE AUTOMATIC DETAIL)
- STA 233+78 - REPAIR EXISTING GRAVEL DRIVE (4T)



SCALE:
H: 1" = 100'
V: 1" = 10'



DATE: 04/24/20
SCALE: 1" = 100'
DRAWN BY: M.S.
APPROVED BY: GOOCH
FILENAME: 18298PH2

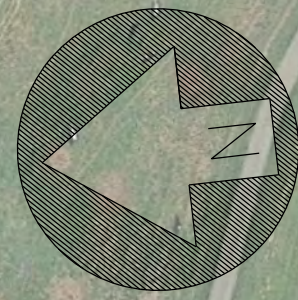
CONTRACT 2 - PHASE 1B WATER PROJECT
DANVILLE TO MCKINNEY CONNECTION
8" WATER MAIN
STANFORD, LINCOLN COUNTY, KENTUCKY

CLIENT:
MCKINNEY WATER DISTRICT
2900 MIDDLEBURG RD
MCKINNEY, KY 40448

P.O. BOX 204
165 FOSTER LANE
STANFORD, KY 40484
PHONE (606) 365-8362
FAX (606) 365-1097



REVISION(S)



STA 244+58 - RECONNECT METER PRESSURE REDUCER (SEE DETAIL)

STA 244+62 - RECONNECT METER PRESSURE REDUCER (SEE DETAIL)

STA 247+25 LT- INSTALL 8-INCH GATE VALVE

STA 254+97 - RECONNECT METER PRESSURE REDUCER (SEE DETAIL)

STA 256+40 - REPAIR EXISTING CONCRET DRIVE (120 SQ FT)

STA 257+50 - RECONNECT METER PRESSURE REDUCER (SEE DETAIL)

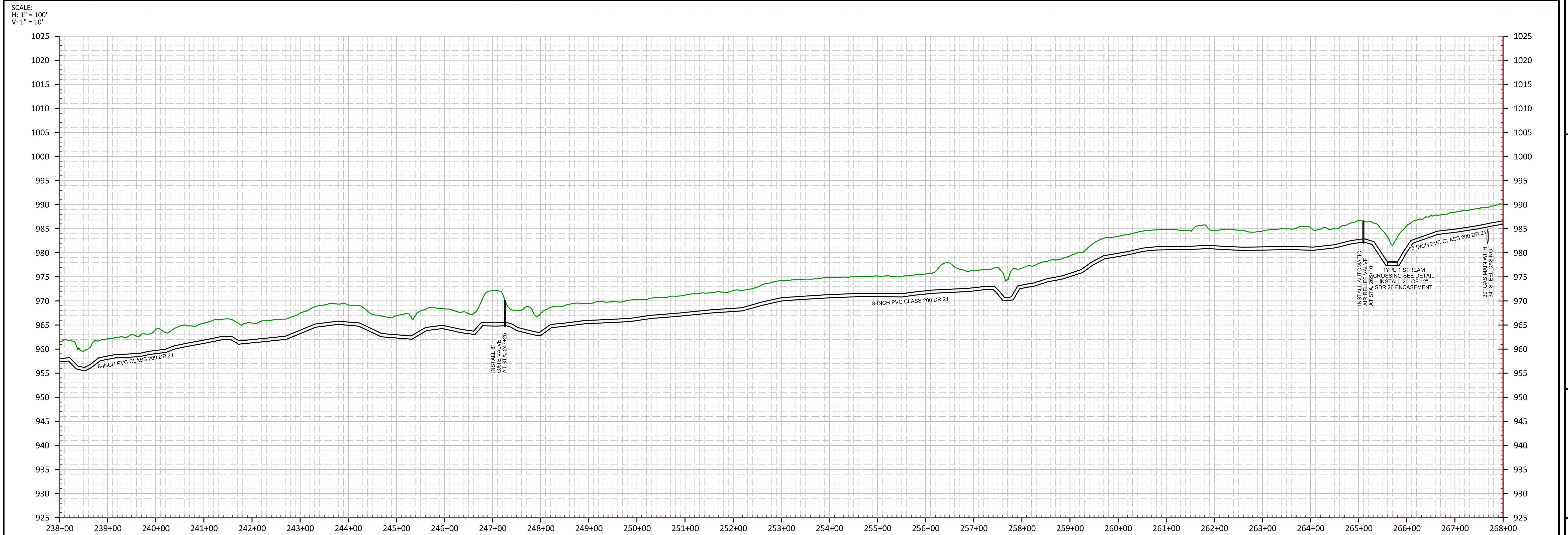
STA 257+50 - INSTALL 106 FT OF 1" CTS TUBING UNDER CREEK (SEE DETAIL)

STA 258+17 - RECONNECT METER PRESSURE REDUCER (SEE DETAIL)

STA 261+70 - REPAIR EXISTING GRAVEL DRIVE (4T)

STA 265+10 - INSTALL AIR RELEASE (SEE AUTOMATIC DETAIL)

STA 265+75 - INSTALL TYPE 1 STREAM CROSSING (SEE DETAIL)



DATE: 04/24/20
SCALE: 1" = 100'
DRAWN BY: M.S.
APPROVED BY: GOOCH
FILENAME: 18298PH2

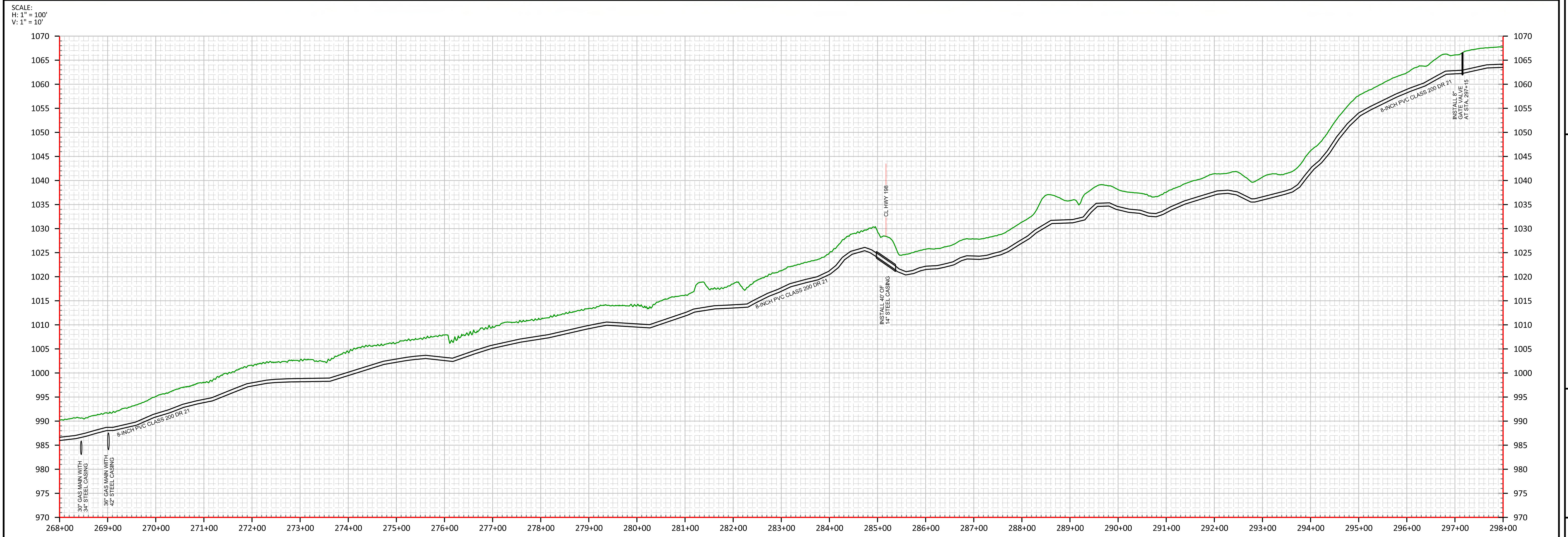
CONTRACT 2 - PHASE 1B WATER PROJECT
DANVILLE TO MCKINNEY CONNECTION
8" WATER MAIN
STANFORD, LINCOLN COUNTY, KENTUCKY

CLIENT:
MCKINNEY WATER DISTRICT
2900 MIDDLEBURG RD
MCKINNEY, KY 40448

P.O. BOX 204
165 FOSTER LANE
STANFORD, KY 40464
PHONE (606) 365-8362
FAX (606) 365-1097



REVISION(S)



DATE: 04/24/20
SCALE: 1" = 100'
DRAWN BY: M.S.
APPROVED BY: GOOCH
FILENAME: 18298PH2

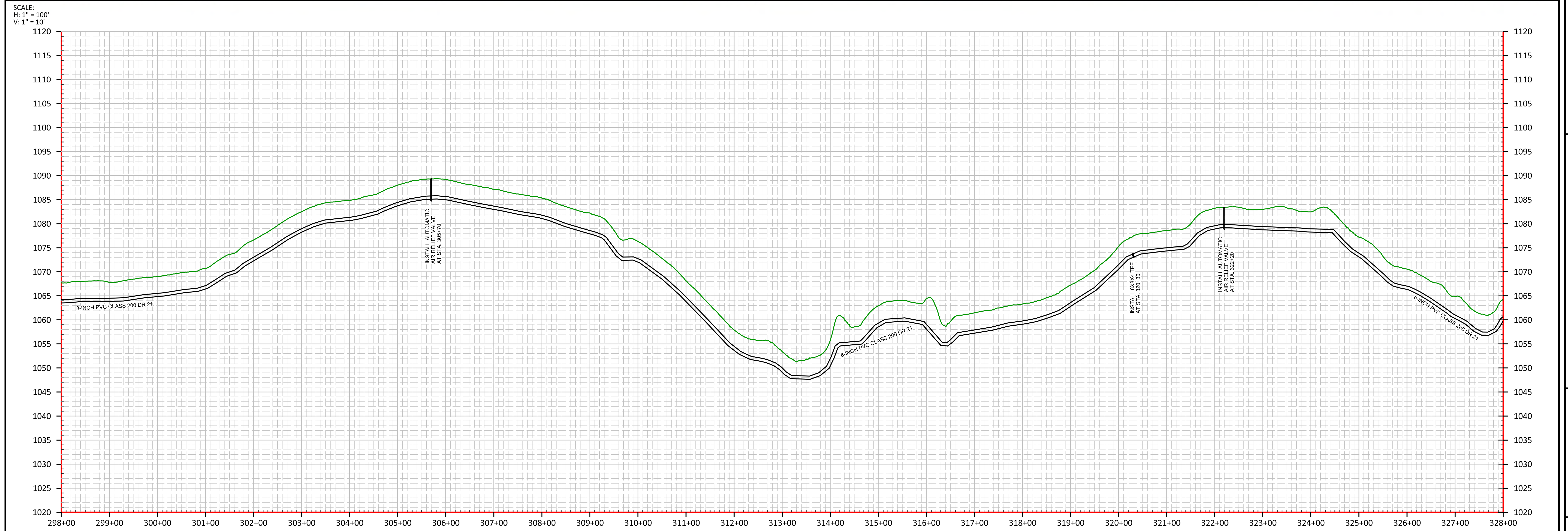
CONTRACT 2 - PHASE 1B WATER PROJECT
DANVILLE TO MCKINNEY CONNECTION
8" WATER MAIN
STANFORD, LINCOLN COUNTY, KENTUCKY

CLIENT:
MCKINNEY WATER DISTRICT
2900 MIDDLEBURG RD
MCKINNEY, KY 40448

P.O. BOX 204
165 FOSTER LANE
STANFORD, KY 40464
PHONE (606) 365-8362
FAX (606) 365-1097



REVISION(S)



DATE: 04/24/20
 SCALE: 1" = 100'
 DRAWN BY: M.S.
 APPROVED BY: GOOCH
 FILENAME: 18298PHZ

CONTRACT 2 - PHASE 1B WATER PROJECT
DANVILLE TO MCKINNEY CONNECTION
8" WATER MAIN
STANFORD, LINCOLN COUNTY, KENTUCKY

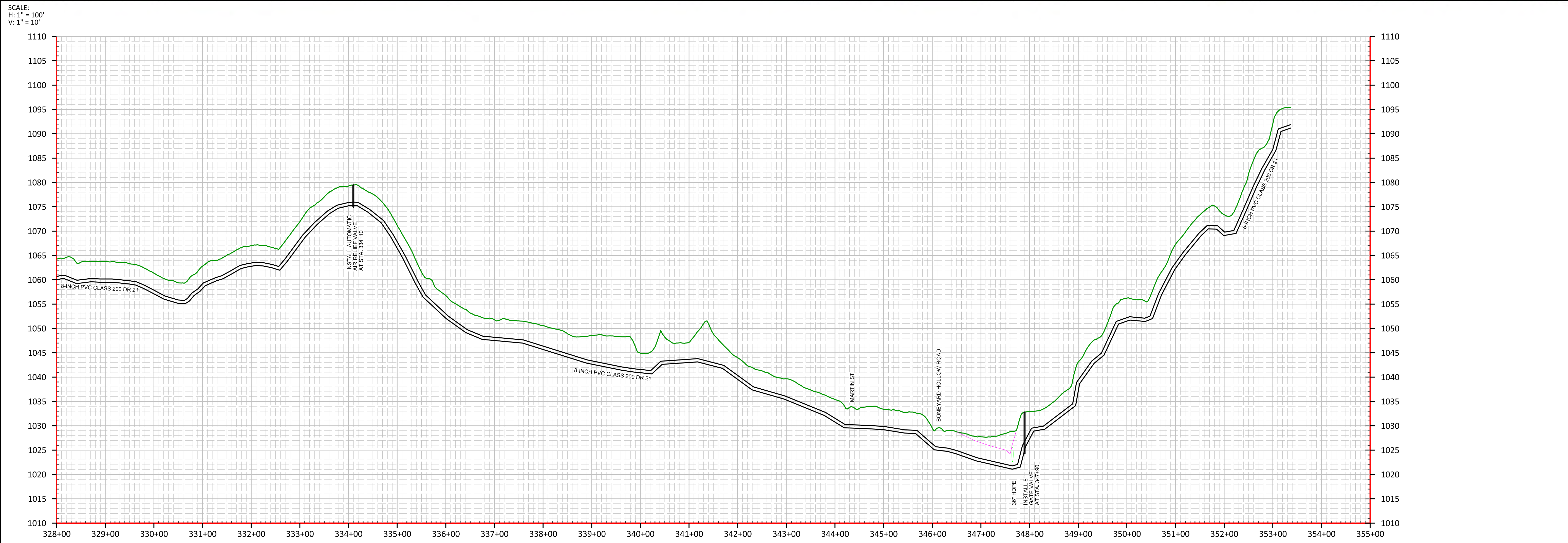
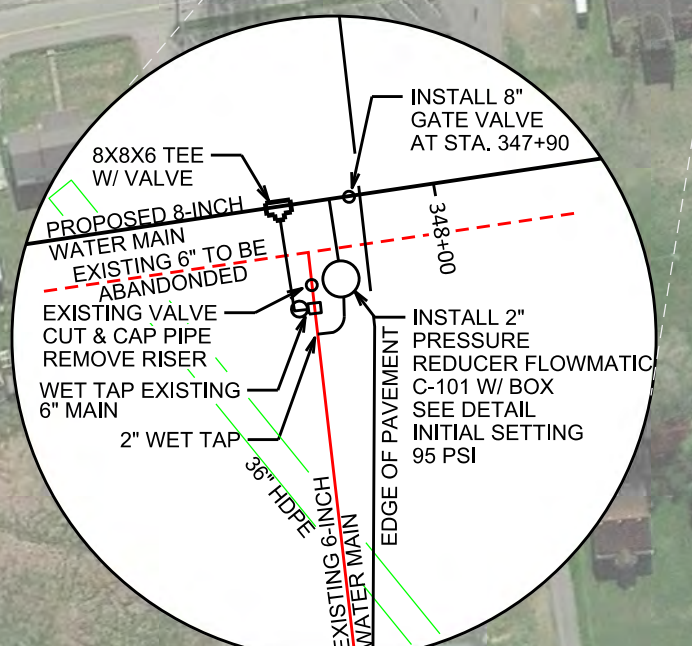
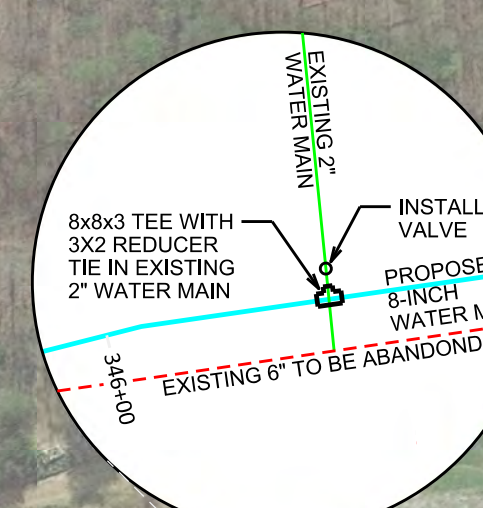
CLIENT:
 MCKINNEY WATER DISTRICT
 2900 MIDDLEBURG RD
 MCKINNEY, KY 40448

P.O. BOX 204
 165 FOSTER LANE
 STANFORD, KY 40484
 PHONE (606) 365-8362
 FAX (606) 365-1097



REVISION(S)

- STA 328+30 - REPAIR EXISTING GRAVEL DRIVE (3T)
- STA 328+40 - RECONNECT METER (SEE DETAIL)
- STA 331+00 - REPAIR EXISTING GRAVEL DRIVE (3T)
- STA 332+60 - RECONNECT METER (SEE DETAIL)
- STA 334+10 - INSTALL AIR RELEASE (SEE AUTOMATIC DETAIL)
- STA 335+80 - RECONNECT METER (SEE DETAIL)
- STA 335+60 - REPAIR EXISTING GRAVEL DRIVE (3T)
- STA 338+00 - RECONNECT METER (SEE DETAIL)
- STA 338+60 - RECONNECT METER (SEE DETAIL)
- STA 339+40 - RECONNECT METER (SEE DETAIL)
- STA 342+10 - RECONNECT METER (SEE DETAIL)
- STA 342+95 - RECONNECT METER (SEE DETAIL)
- STA 343+00 - RECONNECT METER (SEE DETAIL)
- STA 343+45 - RECONNECT METER (SEE DETAIL)
- STA 343+78 - RECONNECT METER (SEE DETAIL)
- STA 343+82 - RECONNECT METER (SEE DETAIL)
- STA 344+15 - RECONNECT METER (SEE DETAIL)
- STA 344+28 - REPAIR EXISTING ASPHALT DRIVE (55 SQ FT)
- STA 345+10 - RECONNECT METER (SEE DETAIL)
- STA 345+60 - RECONNECT METER (SEE DETAIL)
- STA 346+10 - REPAIR EXISTING ASPHALT DRIVE (60 SQ FT)
- STA 346+15 - RECONNECT 2-INCH 5 FT SDR 21 WATER MAIN (SEE DETAIL)
- STA 346+15 - RECONNECT 8X8X3 MJ TEE WITH 3X2 REDUCER
- STA 297+15 LT - INSTALL 2-INCH GATE VALVE
- STA 344+30 LT - INSTALL 8X8X4 MJ TEE
- STA 347+80 LT - INSTALL 8X8X6 MJ TEE
- STA 347+80 RT - INSTALL 6-INCH WET TAP AND MJ SADDLE (SEE DETAIL)
- STA 347+80 RT - INSTALL 6-INCH CUT AND CAP (SEE DETAIL)
- STA 347+80 RT - INSTALL 2-INCH PRESSURE REDUCER WITH BOX (SEE DETAIL)
- STA 347-80 LT - INSTALL 2-INCH WET TAP AND SADDLE (SEE DETAIL)
- STA 347-85 - INSTALL 2-INCH TAP AND SADDLE (SEE DETAIL)
- STA 347+90 - INSTALL 8-INCH GATE VALVE
- STA 347+80 TO STA 349+00 - REPAIR EXISTING ASPHALT DRIVE (590 SQ FT)
- STA 348+10 - RECONNECT METER (SEE DETAIL)
- STA 349+10 - RECONNECT METER (SEE DETAIL)
- STA 350+25 - RECONNECT METER (SEE DETAIL)
- STA 351+10 - RECONNECT METER (SEE DETAIL)
- STA 352+55 - RECONNECT METER (SEE DETAIL)
- STA 353+34 - INSTALL 8-INCH GATE VALVE
- STA 353+37 - INSTALL 8X8X6 MJ TEE



DATE: 04/24/20
 SCALE: 1" = 100'
 DRAWN BY: M.S.
 APPROVED BY: GOOCH
 FILENAME: 18298PH2

CONTRACT 2 - PHASE 1B WATER PROJECT
DANVILLE TO MCKINNEY CONNECTION
8" WATER MAIN
STANFORD, LINCOLN COUNTY, KENTUCKY

CLIENT:
 MCKINNEY WATER DISTRICT
 2900 MIDDLEBURG RD
 MCKINNEY, KY 40448

P.O. BOX 204
 165 FOSTER LANE
 STANFORD, KY 40464
 PHONE (606) 365-8362
 FAX (606) 365-1097



REVISION(S)