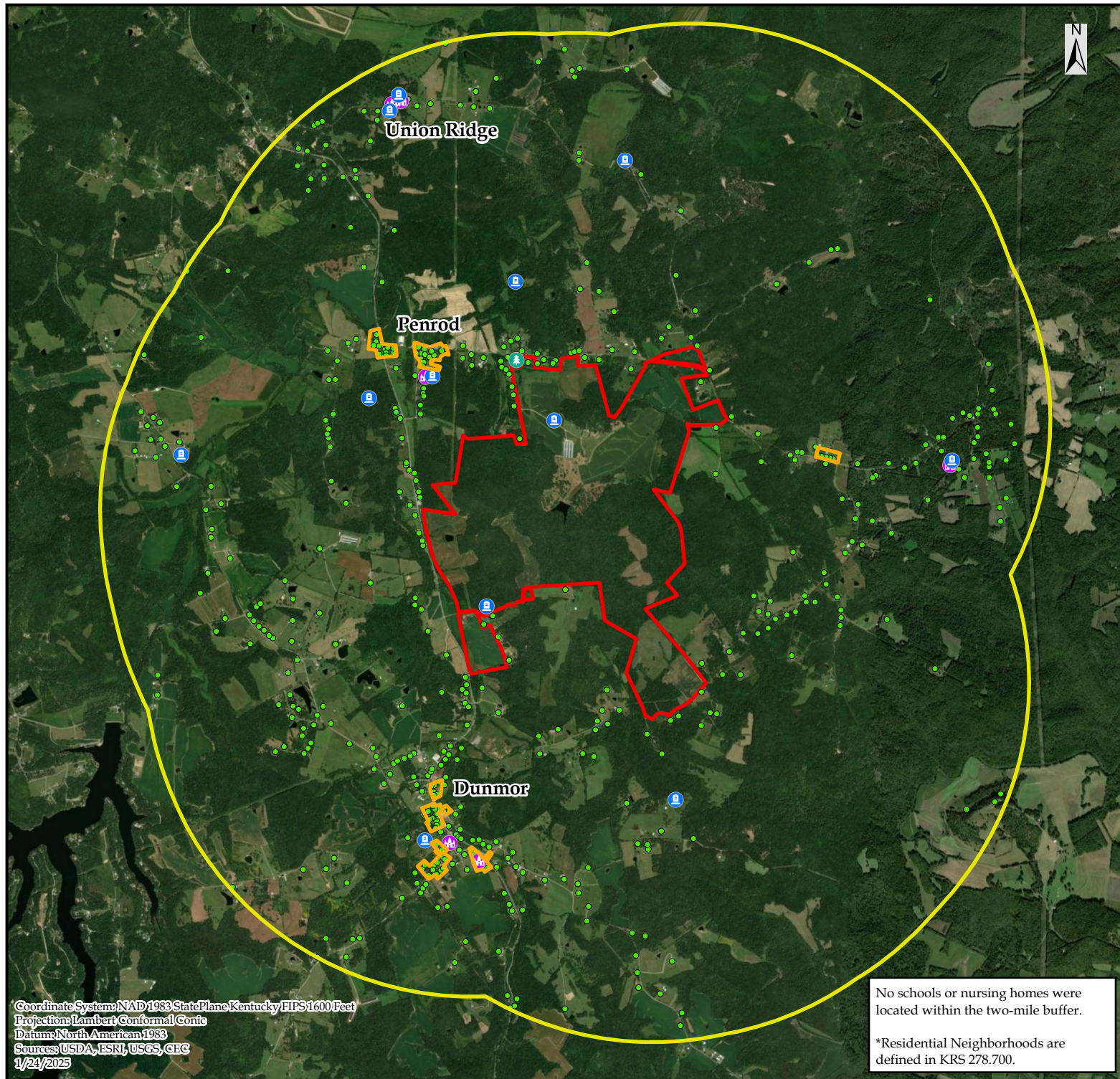


Attachment B
CONTEXT MAP

Lost City Renewables LLC
Muhlenberg County, Kentucky



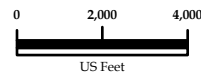
COPPERHEAD
ENVIRONMENTAL CONSULTING

Prepared for:
**Lost City
Renewables, LLC**

FIGURE 1:
Two-mile Vicinity Map
for the Lost City Solar Project,
Muhlenberg County, Kentucky.

Legend

- County Park
- Cemetery
- Church
- Residential
- Residential Neighborhood*
- Two-mile Buffer
- Project Area



Scale: 1 in = 4,500 ft

Prepared by :
Copperhead Environmental Consulting, Inc.
471 Main Street
P.O. Box 73
Paint Lick, Kentucky 40461

Drawn by:	TC	Date:	1/24/2025
Checked by:	MM	Revision:	03



Coordinate System: NAD 1983 StatePlane Kentucky FIPS 1600 Feet
Projection: Lambert Conformal Conic
Datum: North American 1983
Sources: USDA, ESRI, USGS, CEG
1/24/2025

No schools or nursing homes were located within the two-mile buffer.

*Residential Neighborhoods are defined in KRS 278.700.