

Points Along Proposed Boundary

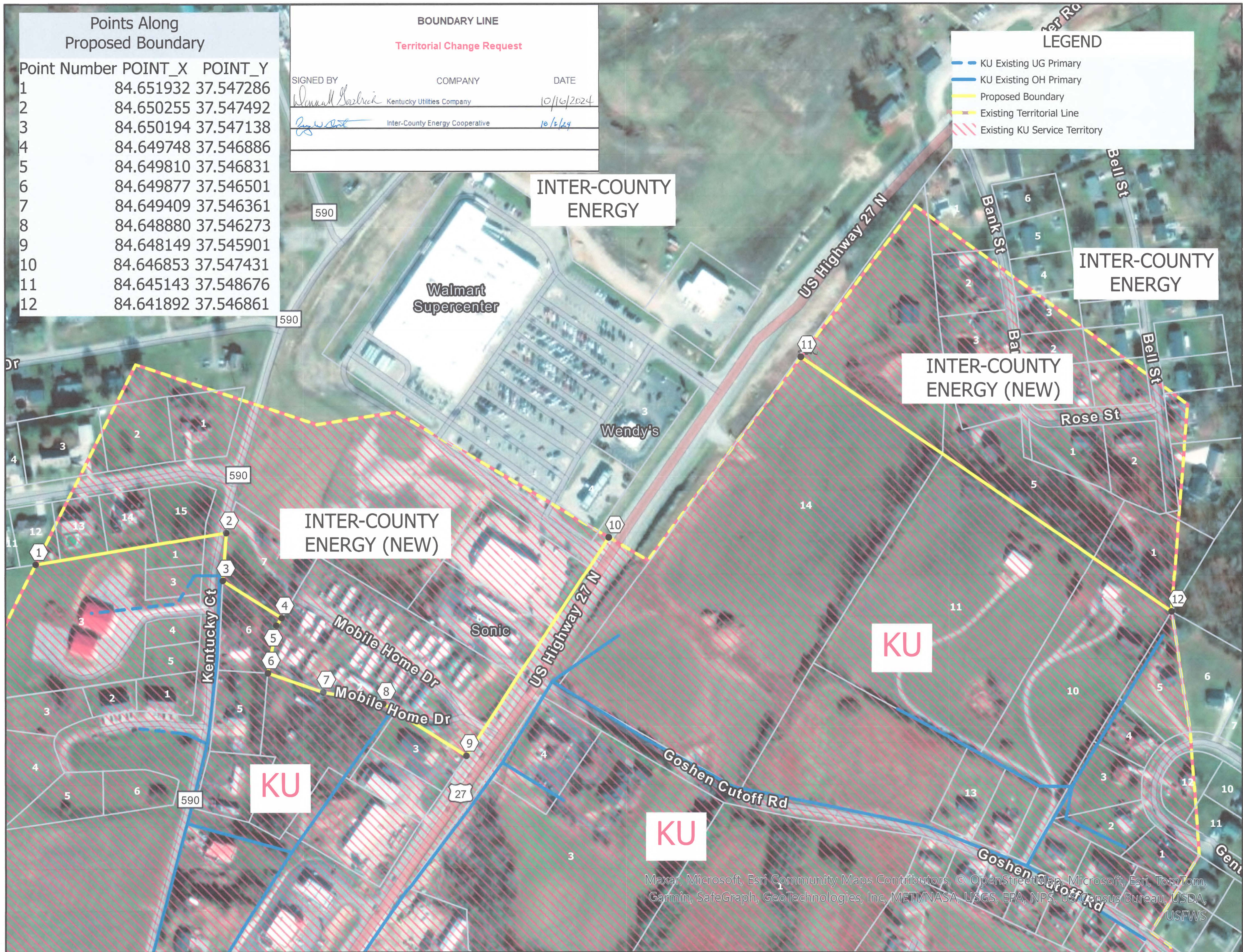
Point Number	POINT_X	POINT_Y
1	84.651932	37.547286
2	84.650255	37.547492
3	84.650194	37.547138
4	84.649748	37.546886
5	84.649810	37.546831
6	84.649877	37.546501
7	84.649409	37.546361
8	84.648880	37.546273
9	84.648149	37.545901
10	84.646853	37.547431
11	84.645143	37.548676
12	84.641892	37.546861

BOUNDARY LINE
Territorial Change Request

SIGNED BY	COMPANY	DATE
<i>Dannal Barbrick</i>	Kentucky Utilities Company	10/16/2024
<i>[Signature]</i>	Inter-County Energy Cooperative	10/16/24

LEGEND

- KU Existing UG Primary
- KU Existing OH Primary
- Proposed Boundary
- Existing Territorial Line
- Existing KU Service Territory



Maxar, Microsoft, Esri Community Maps Contributors, © OpenStreetMap, Microsoft, Esri, TomTom, Garmin, SafeGraph, GeoTechnologies, Inc, METI/NASA, USGS, EPA, NPS, US Census Bureau, USDA, USFWS