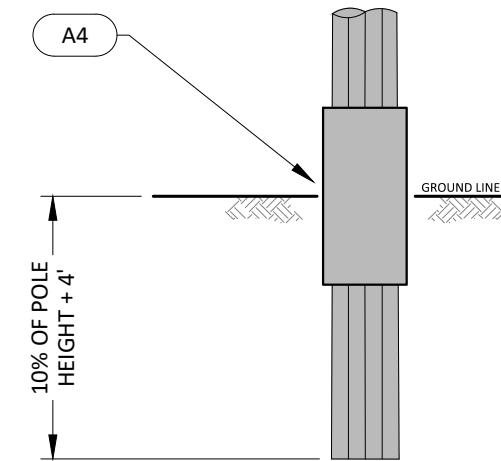


### LIST OF MATERIALS

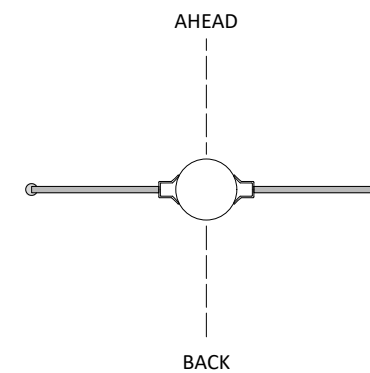
DWG. REF.	QTY	EKPC ITEM ID	MANUFACTURER	PART #	DESCRIPTION
M1	2			DA-6-SD	ARM, STEEL DAVIT ARM, 4' STANDARD DUTY
M2	4			DA-9-SD	ARM, STEEL DAVIT ARM, 9' STANDARD DUTY
M3	2			DA-10-SD	ARM, STEEL DAVIT ARM, 10' STANDARD DUTY

### LIST OF ASSEMBLIES

DWG. REF.	QTY	DESCRIPTION
A1	1	TM-4B (OHGW ASSY)
A2	1	TM-SB (OPGW ASSY)
A3	6	TM-1AG-161 (INSULATOR ASSY)
A4	1	TM-9-SP2 (GROUNDING ASSY)



PLAN VIEW



SETTING DEPTH

### APPROVALS

DRAWN R. TERRILL	DATE 10-17-2024
REVIEWED	DATE
APPROVED	DATE

### REVISIONS

NO.	DESCRIPTION	DATE
1	REDRAWN IN AUTOCAD	10-17-2024

### GENERAL NOTES

1. DAVIT ARMS AND CONNECTION HARDWARE TO BE SUPPLIED BY STEEL POLE MANUFACTURER.

**EAST KENTUCKY POWER COOPERATIVE**  
 4775 LEXINGTON ROAD, PO BOX 707  
 WINCHESTER, KENTUCKY 40392

**TRANSMISSION ENGINEERING  
 STANDARD FRAMING DRAWING**

FRAMING DESIGNATION  
**TUD-2S-161**

STRUCTURE GROUP  
**DOUBLE CIRCUIT TANGENT**

FRAMING MATERIAL	POLE MATERIAL	# POLES
STEEL	STEEL	1
DRAWING SCALE	VOLTAGE	REVISION
1" = 4'	161kV	5