

Clover Creek Solar Project LLC d/b/a New Frontiers Solar Park
Supplemental Response to Siting Board Staff's Second Request for Information
Case No. 2024-00253

Request No. 31:

Provide whether any part of the project boundary lies within Hardinsburg, Kentucky city limits. If so, provide a map identifying the specific portion of the project within the city limits.

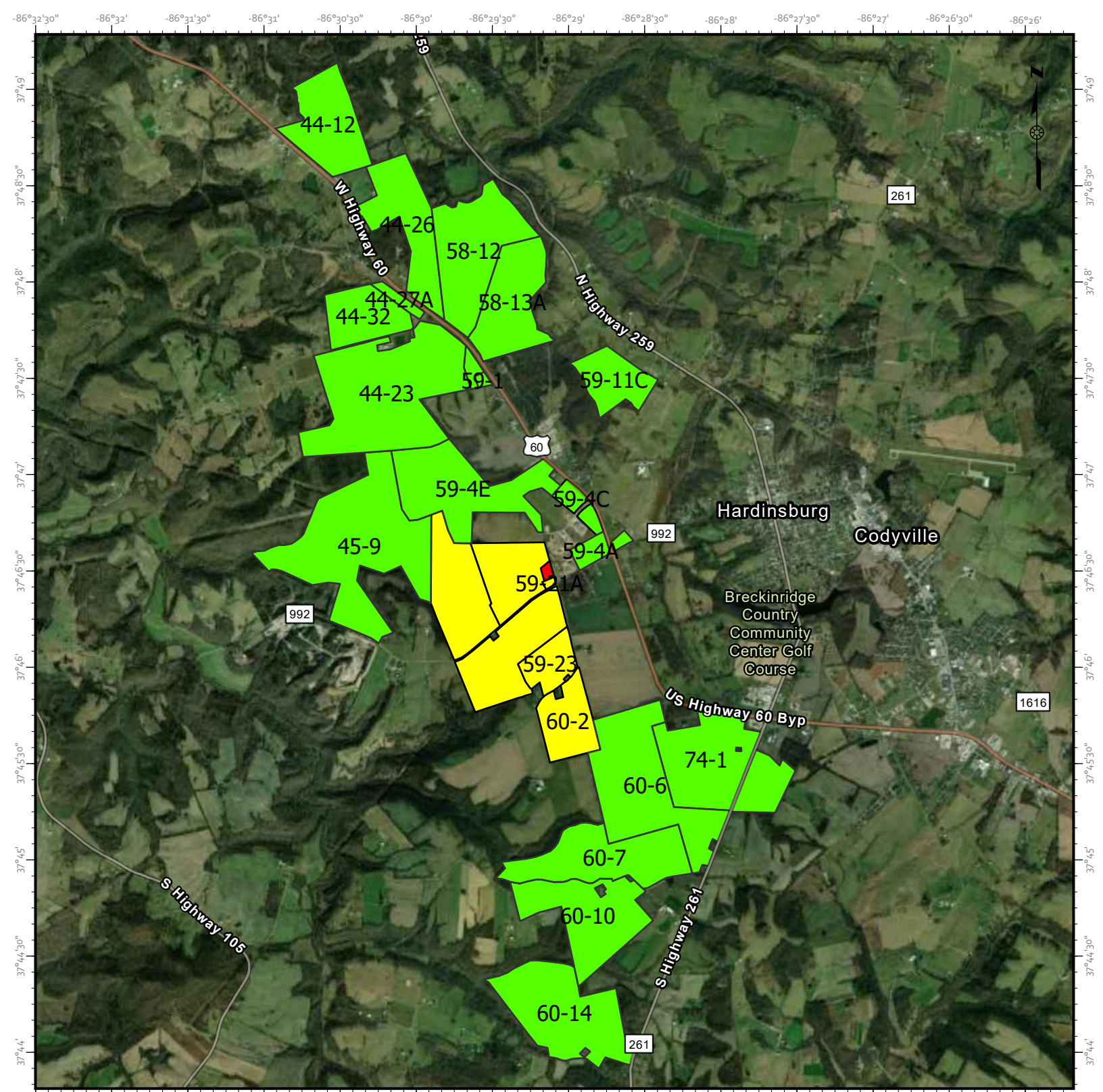

Original Response to Request No. 31:

No portion of the Project boundary lies within Hardinsburg, Kentucky city limits. Portions of parcels 59-4C, 59-4A, 59-8, and 59-15 were in the city limits. Since the original parcel map was filed into the record in this case, those parcels have been removed from the Project with the exception of parcel 59-4C. The lease for parcel 59-4C was amended to exclude the area covered by the city limits. An updated parcel map will be filed in a supplemental filing demonstrating the removal and excluded areas of those parcels.

Supplemental Response to Request No. 31:

Please see attached parcel maps for the overall Project site and parcels 59-4A and 59-4C.

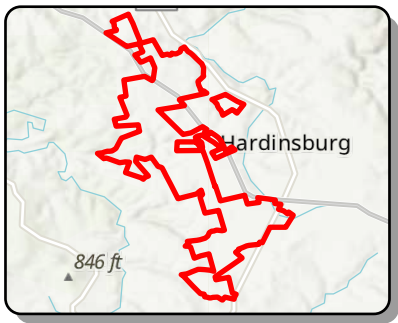
Responding Witness: Jesse Eick

edp
Renewables

**New Frontiers
Project Parcels**

Date: 2/13/2025



- New Frontiers Solar Park Infrastructure Parcels
- New Frontiers Solar Park Collection Parcels
- New Frontiers Solar Park Substation Purchase Option Area



EXHIBIT A-1

Depiction of the Property and Exclusion Area

