

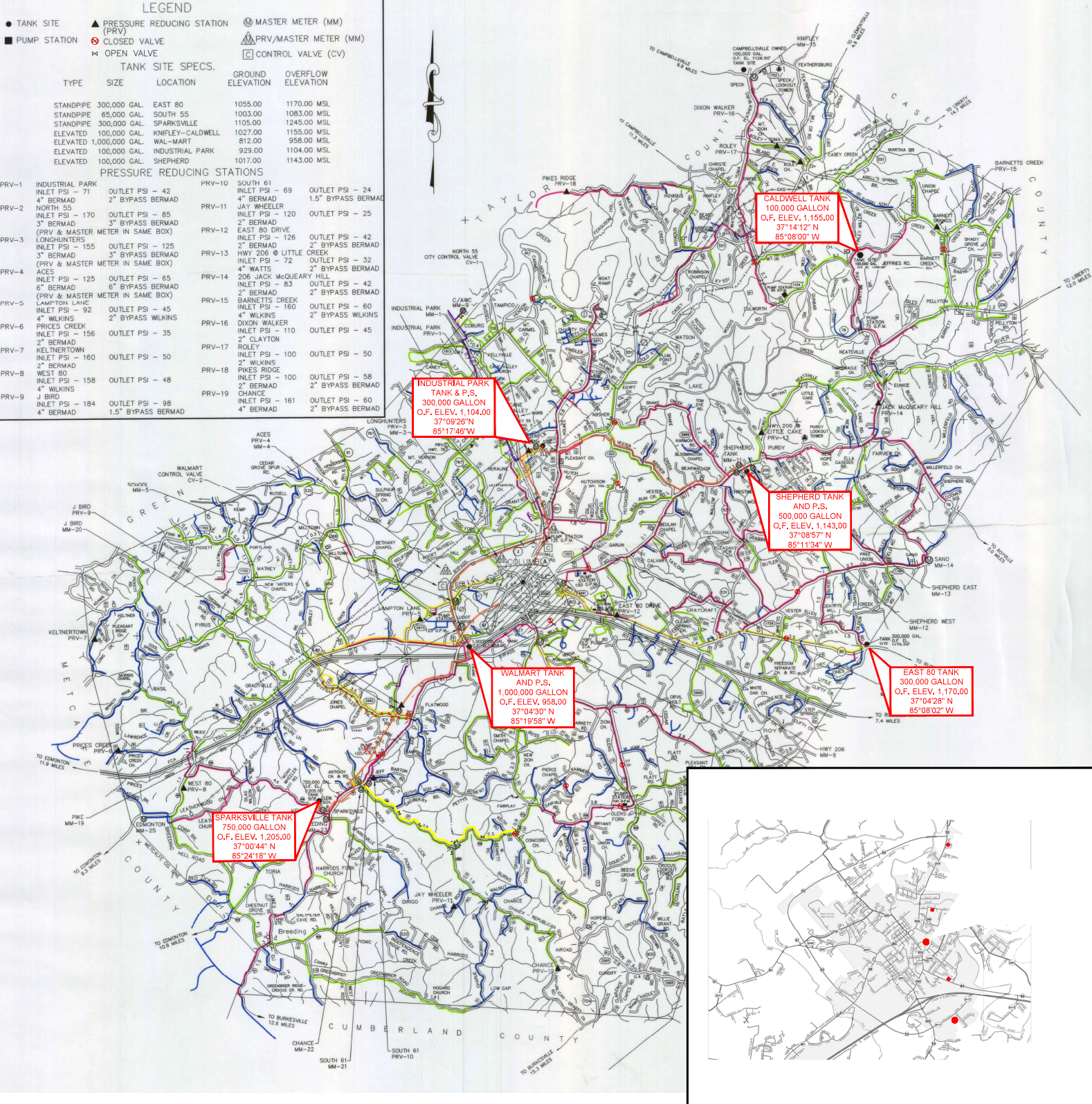
USGS The National Map: National Boundaries Dataset, 3DEP Elevation Program, Geographic Names Information System, National Hydrography Dataset, National Land Cover Database, National Structures Dataset, and National Transportation Dataset; USGS Global Ecosystems; U.S. Census Bureau TIGER/Line data; USFS Road Data; Natural Earth Data; U.S. Department of State Humanitarian Information Unit; and NOAA National Centers for Environmental Information, U.S. Coastal Relief Model. Data refreshed April, 2023.

**LEGEND**

- TANK SITE
- ▲ PRESSURE REDUCING STATION (PRV)
- ⊙ MASTER METER (MM)
- PUMP STATION
- ⊗ CLOSED VALVE
- ⊕ OPEN VALVE
- ⊙ PRV/MASTER METER (MM)
- ⊕ CONTROL VALVE (CV)

TANK SITE SPECS.			
TYPE	SIZE	LOCATION	GROUND ELEVATION
STANDPIPE	300,000 GAL.	EAST 80	1055.00
STANDPIPE	65,000 GAL.	SOUTH 55	1003.00
STANDPIPE	300,000 GAL.	SPARKSVILLE	1105.00
ELEVATED	100,000 GAL.	KNIFLEY-CALDWELL	1027.00
ELEVATED	1,000,000 GAL.	WAL-MART	812.00
ELEVATED	100,000 GAL.	INDUSTRIAL PARK	929.00
ELEVATED	100,000 GAL.	SHEPHERD	1017.00
			1143.00 MSL

PRESSURE REDUCING STATIONS			
PRV	LOCATION	INLET PSI	OUTLET PSI
PRV-1	INDUSTRIAL PARK	42	24
PRV-2	NORTH 55	85	25
PRV-3	LONGHUNTERS	125	42
PRV-4	ACES	65	42
PRV-5	LAMPTON LAKE	45	60
PRV-6	WILKINS	35	45
PRV-7	WEST 80	50	50
PRV-8	WILKINS	48	58
PRV-9	J BIRD	98	60
PRV-10	SOUTH 61	69	24
PRV-11	JAY WHEELER	120	25
PRV-12	EAST 80 DRIVE	126	42
PRV-13	HWY 206 @ LITTLE CREEK	72	32
PRV-14	206 JACK McQUEARY HILL	83	42
PRV-15	BARNETTS CREEK	160	60
PRV-16	DIXON WALKER	110	45
PRV-17	CLAYTON	100	50
PRV-18	PIKES RIDGE	100	58
PRV-19	CHANCE	161	60



**CALDWELL TANK**  
100,000 GALLON  
O.F. ELEV. 1,155.00  
37°14'12" N  
85°08'00" W

**INDUSTRIAL PARK TANK & P.S.**  
300,000 GALLON  
O.F. ELEV. 1,104.00  
37°09'26" N  
85°17'46" W

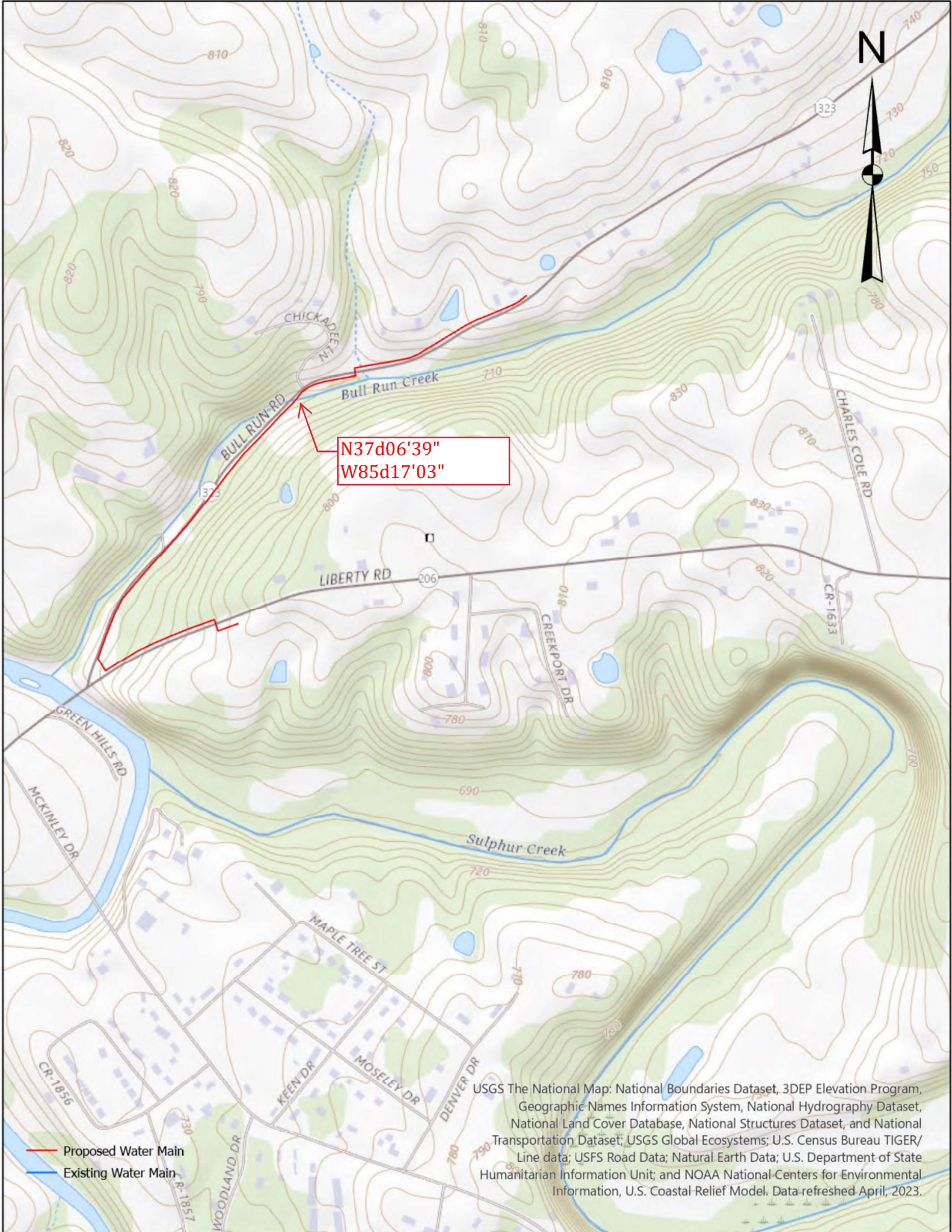
**SHEPHERD TANK AND P.S.**  
500,000 GALLON  
O.F. ELEV. 1,143.00  
37°08'57" N  
85°11'34" W

**WALMART TANK AND P.S.**  
1,000,000 GALLON  
O.F. ELEV. 958.00  
37°04'30" N  
85°19'58" W

**EAST 80 TANK**  
300,000 GALLON  
O.F. ELEV. 1,170.00  
37°04'28" N  
85°08'02" W

**SPARKSVILLE TANK**  
750,000 GALLON  
O.F. ELEV. 1,205.00  
37°00'44" N  
85°24'18" W

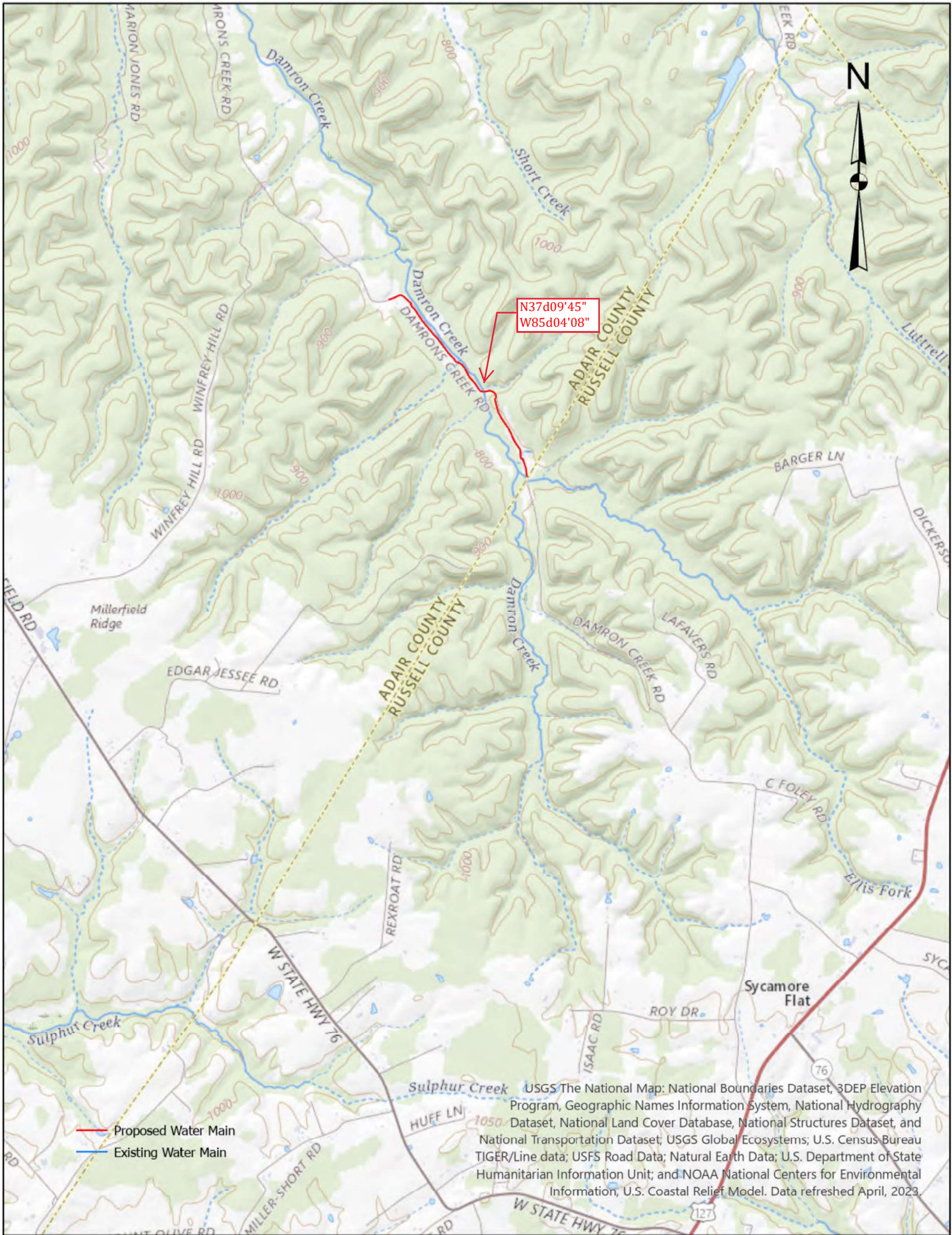




— Proposed Water Main  
— Existing Water Main

N37d06'39"  
W85d17'03"

USGS The National Map: National Boundaries Dataset, 3DEP Elevation Program, Geographic Names Information System, National Hydrography Dataset, National Land Cover Database, National Structures Dataset, and National Transportation Dataset; USGS Global Ecosystems; U.S. Census Bureau TIGER/Line data; USFS Road Data; Natural Earth Data; U.S. Department of State Humanitarian Information Unit; and NOAA National Centers for Environmental Information, U.S. Coastal Relief Model. Data refreshed April, 2023.



N37d09'45"  
W85d04'08"

— Proposed Water Main  
— Existing Water Main

USGS The National Map: National Boundaries Dataset, 3DEP Elevation Program, Geographic Names Information System, National Hydrography Dataset, National Land Cover Database, National Structures Dataset, and National Transportation Dataset; USGS Global Ecosystems; U.S. Census Bureau TIGER/Line data; USFS Road Data; Natural Earth Data; U.S. Department of State Humanitarian Information Unit; and NOAA National Centers for Environmental Information, U.S. Coastal Relief Model. Data refreshed April, 2023.