



MEMO

TO	Christina Martens, Director of Permitting & Environmental
FROM	Elizabeth Wilk, ERM
DATE	17 April 2024
REFERENCE	Pike County Solar Project, LLC
SUBJECT	Pike County Solar Project- Desktop Cultural Assessment

1. INTRODUCTION

Environmental Resources Management (ERM) has been retained by Pike County Solar Project, LLC to conduct a desktop review of cultural resources for the Pike County Solar Project (Project) in Pike County, Kentucky. The Project is anticipated to be developed as a photovoltaic solar facility on 1,543 acres, approximately 0.5 miles northeast of Meta, Kentucky (Project Site; USGS 1978).

The goal of the desktop review was to identify previously recorded archaeological sites and historic and architectural resources located within or near the Project area to aid Pike County Solar Project, LLC in planning for the proposed Project. A study area was established consisting of the proposed Project area and a one-mile buffer around the Project area to identify the number and types of previously recorded cultural resources in the vicinity that could be directly or indirectly affected by the Project (see Figures 1 and 2). The review was conducted in March 2024 by requesting archaeological data from the Kentucky Office of the State Archaeology (OSA) and reviewing architectural data from the Kentucky Historic Resources Survey. The National Park Service (NPS) National Register of Historic Places (NRHP) and National Historic Landmark (NHL), and the Find a Grave databases were also consulted.

Review of topographic maps and historic aerials indicates the Project Site has been developed and heavily disturbed through mining activities (USGS 1978, NETROnline 2024). Therefore, due to this previous disturbance, it is unlikely intact and significant precontact or historic resources are present within the Project Site.

2. ARCHAEOLOGY RESOURCES

Based on a review of data obtained from OSA, one previously recorded archaeological site, identified as record ID 15Pi164, has been identified within the Project Site, which

consists of a historic farm and residence (OSA 2024). This site is unevaluated for inclusion in the NRHP. An additional two sites are located within one-mile of the Project site (15Pi198 and 15Pi199). No information on these sites was available.

Four archaeological surveys have been historically conducted within the Project Site (581318, 580631, 583337, 583592) and ten within the one-mile buffer (Table 1; Figures 3-4). Together these surveys cover approximately 75% of the Project Site.

TABLE 1. PREVIOUSLY RECORDED ARCHAEOLOGICAL SURVEYS WITHIN A ONE-MILE BUFFER

Report Number	Report Title	Report Author	Year	Distance from Project Site
581318	An Archaeological Reconnaissance of a Proposed Coal Mine Operation Along Bent Mountain in Pike County, Kentucky	Hand, Robert	1999	Within Project Site
580631	A Coal Mine Survey Along Wolfpen Branch and Smith Fork in Pike County, Kentucky	Richmond, Michael	1997	Within Project Site
577832	A Cultural Reconnaissance of Six Proposed Water Tank Locations for the Big Creek AML Water Project, Mountain Water District in Pike County, Kentucky	Schock Jack	1988	Adjacent to Project Site
583337	An Archaeological Survey of a Proposed Coal Mine Operation Along Ford Mountain in Pike County, Kentucky	Hand, Robert	2004	Within Project Site
583592	An Archaeological Survey of a Proposed Coal Mining Operation along Cabin Knoll Branch in Pike County, Kentucky	D'Ambruoso, A.	2005	Within Project Site

Report Number	Report Title	Report Author	Year	Distance from Project Site
581989	No Recorded Information Available			Approximately 0.75 miles northwest
582703	No Recorded Information Available			Approximately 0.5 miles west
578273	No Recorded Information Available			Approximately 0.9 miles north
580060	No Recorded Information Available			Approximately 0.9 miles northeast
589084	No Recorded Information Available			Approximately 0.9 miles northeast
579484	No Recorded Information Available			Approximately 0.75 miles northeast
577832	No Recorded Information Available			Adjacent to Project Site
580435	No Recorded Information Available			Approximately 0.5 miles south
589017	No Recorded Information Available			Approximately 0.5 miles south
588431	No Recorded Information Available			Approximately 0.8 miles south

Source: OSA 2024

3. ARCHITECTURAL RESOURCES

A review of the Kentucky Historic Resources Survey, NRHP, and NHL databases indicates there are no previously recorded architectural resources within the Project and eleven previously recorded architectural resources within the one-mile buffer (Table 2; Kentucky Heritage Council 2024; NPS 2024; NPS 2018).

TABLE 2. PREVIOUSLY RECORDED ARCHITECTURAL RESOURCES WITHIN A ONE-MILE BUFFER

Resource Number	Resource Name	Date	Description	NRHP Eligibility	Distance from Project Site
PI 13	Sylvia Trent Auxier House	1925-1949	Single Dwelling	Not evaluated	Approximately 0.5 miles south
PI 428	House	1950-1974	Single Dwelling	Not evaluated	Approximately 0.5 miles south
PI 429	House	1950-1974	Single Dwelling	Not evaluated	Approximately 0.5 miles south
PI 430	House	1925-1949	Single Dwelling	Not evaluated	Approximately 0.5 miles south
PI 431	House	1925-1949	Single Dwelling	Not evaluated	Approximately 0.5 miles south
PI 432	House	1950-1974	Single Dwelling	Not evaluated	Approximately 0.5 miles south
PI 433	House	1925-1949	Single Dwelling	Not evaluated	Approximately 0.5 miles south
PI 434	Bridge	1900-1924	Bridge	Not evaluated	Approximately 0.5 miles south
PI 435	House	1925-1949	Single Dwelling	Not evaluated	Approximately 0.5 miles south
PI 436	House	1875-1899	Single Dwelling	Not evaluated	Approximately 0.5 miles south

Resource Number	Resource Name	Date	Description	NRHP Eligibility	Distance from Project Site
PI 437	House	1900-1924	Single Dwelling	Not evaluated	Approximately 0.5 miles south

Source: Kentucky Heritage Council 2024; NPS 2024; NPS 2018

4. HISTORICAL CEMETERIES

Based on a review of the Find a Grave database, one recorded cemetery is located within the Project Site and two cemeteries are located within the one-mile buffer. One additional cemetery is listed within Meta, Kentucky but no coordinates are available (Table 3; Find A Grave 2024).

TABLE 3. PREVIOUSLY RECORDED CEMETERIES RESOURCES WITHIN A ONE-MILE BUFFER

Cemetery Name	Active Dates	Distance from Project Site
Ray Cemetery	1880-present	Within northwestern portion of Project Site
Pinson Cemetery	1920-present	Approximately 0.5 miles south
Chestnut Point Cemetery	1870-present	Approximately 0.5 miles south
King Cemetery	1940-present	Unknown

Source: Find a Grave 2024

Unmarked cemeteries and graves are present in Kentucky. The disturbance of human burials is a felony or misdemeanor under various Kentucky statutes including KRS 525.110 and KRS 525.120. If human remains or unmarked graves are encountered, stop work immediately and contact law enforcement and the Kentucky OSA.

5. CONCLUSIONS AND RECOMMENDATIONS

According to the Kentucky OSA and the Kentucky Historic Resources Survey, one previously recorded archaeological site has been identified within the Project Site and

two within the one-mile buffer. Portions of the Project Site have been previously surveyed by four surveys. Eleven architectural resources are located within the one-mile buffer, but outside of the Project Site. One cemetery is located within the Project Site and three additional cemeteries are within the one-mile buffer. Additionally, due to the disturbance of mining activities the probability of significant precontact or historic resources within the Project Site is low.

This desktop review is for Project planning purposes, and no cultural resources field investigations have been conducted to date. However, if any county, state, and/or local permitting becomes necessary for the Project, it is possible that cultural resources investigations may be required. Such investigations could include archaeological investigations to identify NRHP-eligible archaeological sites that could be directly affected by the Project and/or an architectural survey to identify any NRHP eligible historic and architectural resources that could be directly or indirectly (visually) affected by the Project. Such cultural resources investigations would address previously recorded cultural resources as well as as-yet unrecorded resources.

6. REFERENCES

Find A Grave. 2024. Find A Grave. www.findagrave.com Accessed February 6, 2024.

Kentucky Heritage Council. 2024 Kentucky Historic Resources Survey.
<https://heritage.ky.gov/historic-places/resources-survey/Pages/overview.aspx>.
Accessed February 6, 2024.

Kentucky Office of State Archaeology. 2024. <https://anthropology.as.uky.edu/recorded-archaeological-sites>. Accessed February 6, 2024.

NPS. 2024. National Register Database and Research. U.S. Department of the Interior. Updated January 17, 2024. Available from:
<https://www.nps.gov/subjects/nationalregister/database-research.htm>.
Accessed February 6, 2024.

NPS. 2018. NHL Data. U.S. Department of the Interior. Updated August 13, 2018.
Available from:
<https://www.nps.gov/subjects/nationalhistoriclandmarks/nhlldata.htm>.
Accessed February 6, 2024.

NETROnline (Nationwide Environmental Title Research). 2024. Historic Aerials and Topographic Maps. <https://www.historicaerials.com/>. Accessed February 6, 2024.

U.S. Geological Survey (USGS). 1978. Meta, KY quadrangle, 24,000-min series. USGS, Washington, D.C.

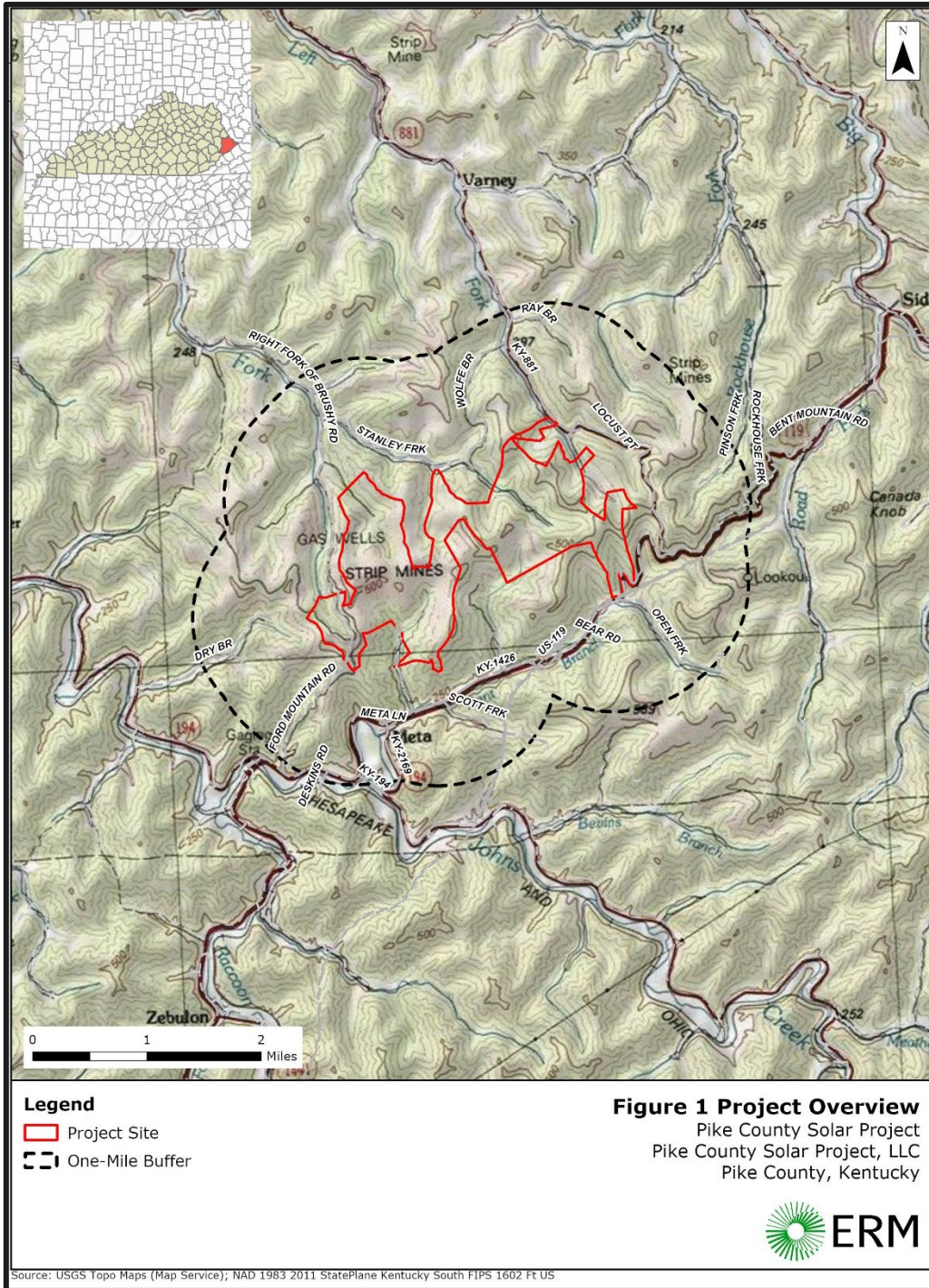


Figure 1. Project Location on Topographic map base.

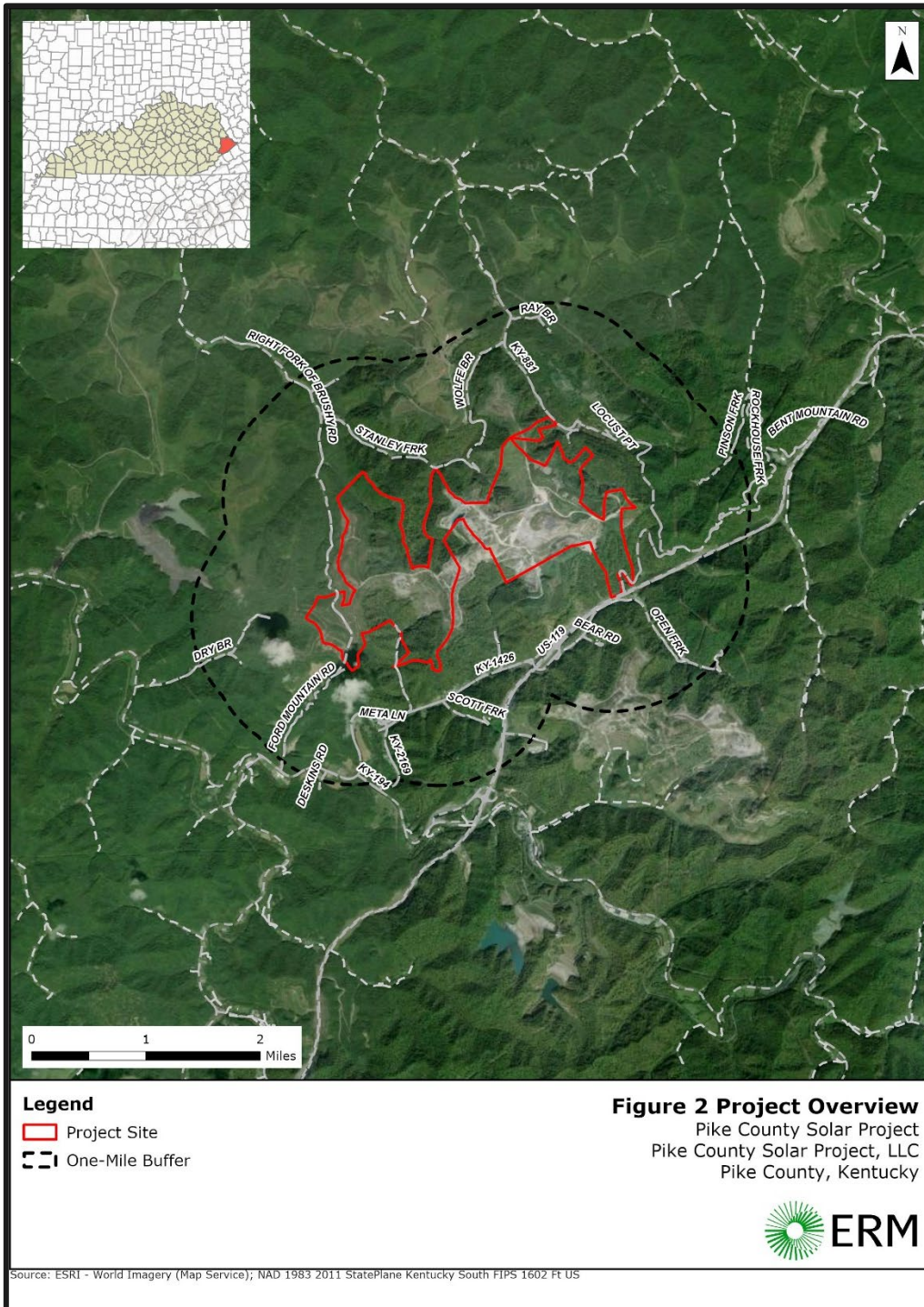


Figure 2. Project location on aerial map.

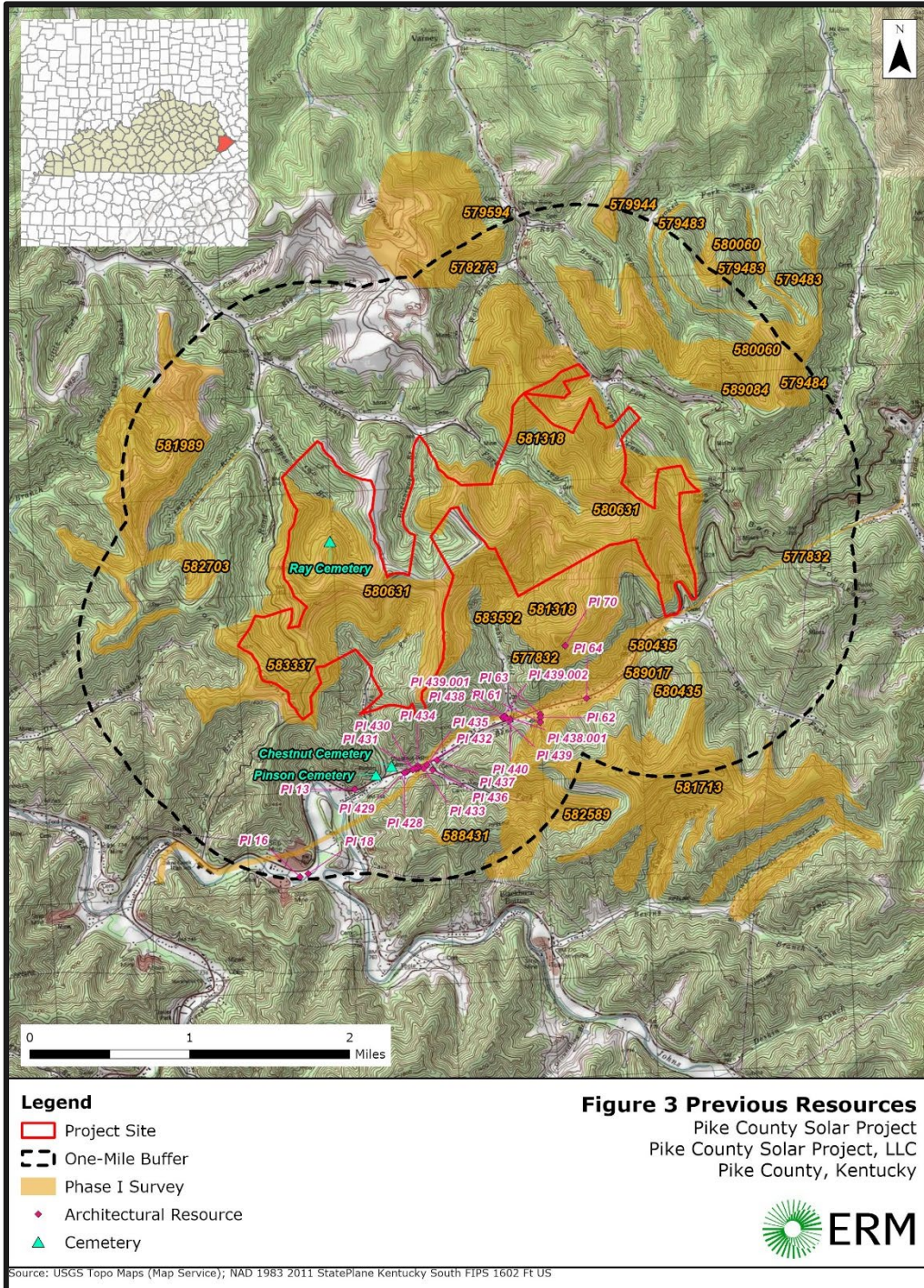


Figure 3. Previously Recorded Resources on topographic map

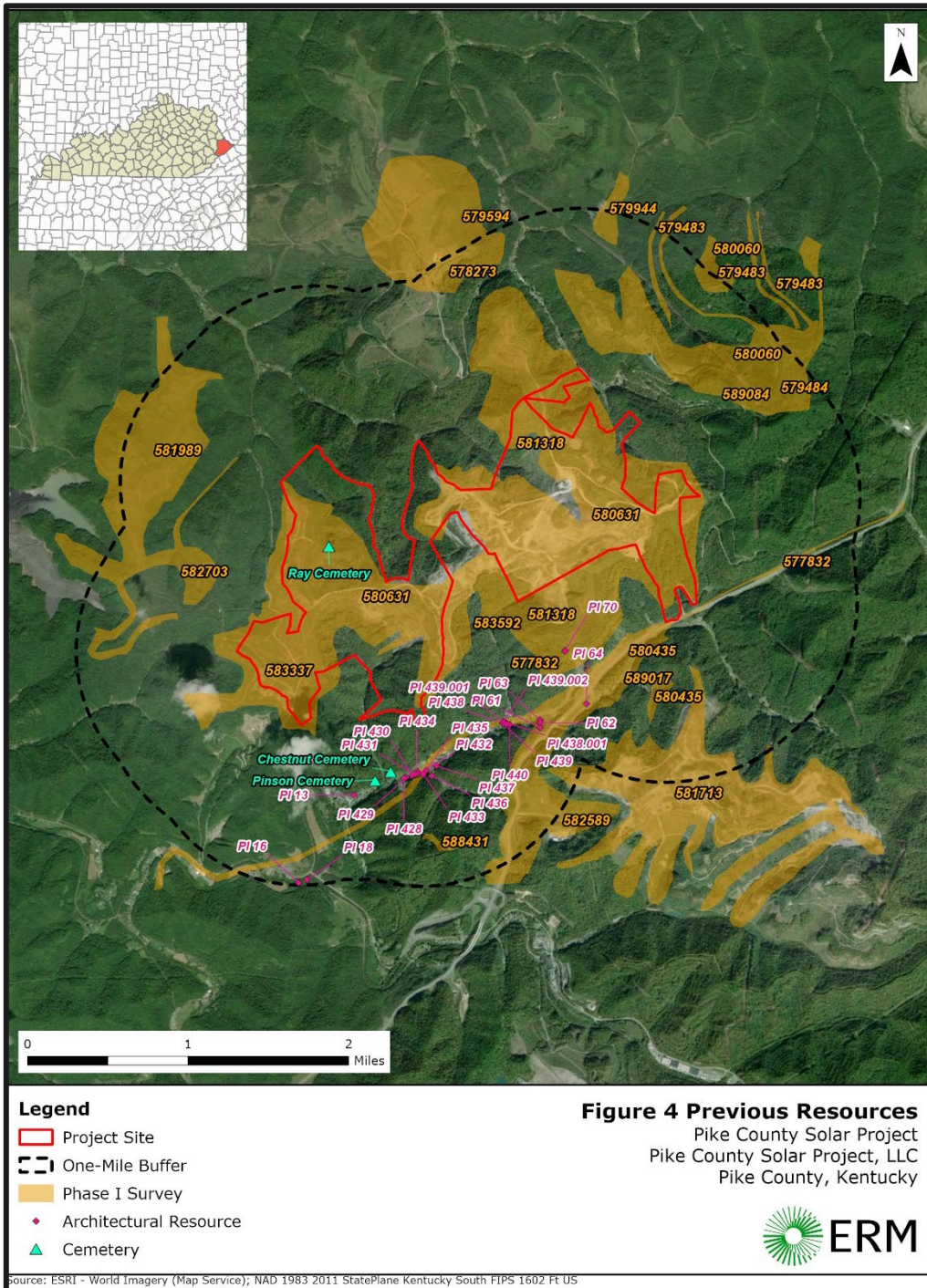


Figure 4. Previously Recorded Resources on aerial map.