



MEMO

TO	Christina Martens, Director of Permitting & Environmental
FROM	Elizabeth Wilk, ERM; Justin Ahn, ERM; Joshua Adams, ERM
DATE	24 May 2024
REFERENCE	Lynn Bark Energy Center, LLC
SUBJECT	Lynn Bark Energy Center- Desktop Cultural Assessment

1. INTRODUCTION

Environmental Resources Management (ERM) has been retained by Lynn Bark Energy Center, LLC to conduct a desktop review of cultural resources for the Lynn Bark Energy Center (Project) in Martin County, Kentucky. The Project is anticipated to be developed as a photovoltaic solar facility on 1,514 acres, within the Community of Davella, Kentucky and approximately 14 miles northeast of Prestonsburg, Kentucky (Project Site; USGS 1978).

The goal of the desktop review was to identify previously recorded archaeological sites and historic and architectural resources located within or near the Project Site to aid Lynn Bark Energy Center, LLC in planning for the proposed Project. A study area was established consisting of the proposed Project Site and a one-mile buffer around the Project Site to identify the number and types of previously recorded cultural resources in the vicinity that could be directly or indirectly affected by the Project (see Figures 1 and 2). The review was conducted in February 2024 by requesting archaeological data from the Kentucky Office of the State Archaeology (OSA) and reviewing architectural data from the Kentucky Historic Resources Survey. The National Park Service (NPS) National Register of Historic Places (NRHP) and National Historic Landmark (NHL) databases were also consulted.

Review of topographic maps and historic aerials indicates the Project site has been developed and heavily disturbed through surface coal mining activities (USGS 1978; NETROnline 2024). Therefore, due to this previous disturbance, it is unlikely intact and significant precontact or historic resources are present within the Project Site.

2. ARCHAEOLOGY RESOURCES

Based on a review of data obtained from OSA, no previously recorded archaeological sites have been identified within the Project Site or the one-mile buffer (OSA 2024; Figures 3-4).

Two archaeological surveys (578891 and 579231) cover portions of the Project Site (OSA 2024; Table 1; Figures 3-4). Together these surveys cover less than 5% of the Project Site. Additionally, eleven surveys have been conducted within the one-mile buffer.

TABLE 1. PREVIOUSLY RECORDED ARCHAEOLOGICAL SURVEYS WITHIN A ONE-MILE BUFFER

Report Number	Report Title	Distance from Project Site
578891	No Additional Information Available	Covers part of the Project Site
582961	No Additional Information Available	Approximately 0.6 miles west
577812	No Additional Information Available	Approximately 0.5 miles west
578161	No Additional Information Available	Approximately 0.9 miles west
579076	No Additional Information Available	Approximately 0.9 miles southwest
587721	No Additional Information Available	Approximately 0.35 miles northeast
579231	No Additional Information Available	Covers part of the Project Site
582093	No Additional Information Available	Approximately 0.5 miles southeast
581399	No Additional Information Available	Approximately 0.95 miles south and 0.5 miles east
579763	No Additional Information Available	Approximately 0.95 miles southeast
585736	No Additional Information Available	Approximately 0.95 miles southeast
584178	No Additional Information Available	Approximately 0.5 miles east

Report Number	Report Title	Distance from Project Site
580081	No Additional Information Available	Approximately 0.75 miles east

Source: Source: OSA 2024

3. ARCHITECTURAL RESOURCES

Based on a review of data obtained from the Kentucky Historic Resources Survey, there are no previously recorded architectural resources within the Project Site or within the one-mile buffer (Kentucky Heritage Council 2024; NPS 2024; NPS 2018; Figures 3 and 4).

4. HISTORICAL CEMETERIES

Based on a review of the Find a Grave database, no recorded cemeteries are located within the Project site and one cemetery is located within the one-mile buffer. Based on information provided by Lynn Bark Energy Center via public concern regarding the Project, a cemetery was noted at the intersection of Lynn Bark Fork Road and Meadow Branch, approximately 890 feet south of the Site, however, database analysis could not determine historical records of the noted cemetery. Additionally, three cemeteries are listed within Davella, Kentucky but no coordinates are available (Find A Grave 2024; Table 2). A map of the approximately location of the potential cemetery, as conveyed by Lynn Bark Energy Center, is included in Attachment A.

TABLE 2. PREVIOUSLY RECORDED CEMETERIES WITHIN A ONE-MILE BUFFER

Cemetery Name	Active Dates	Within Project Site?
Moore-Preece Cemetery	1980-present	Approximately 0.2 miles northeast
Crum Cemetery	1935-present	Unknown
Jackson Family Cemetery	2020-present	Unknown
Howard Cemetery	1925-present	Unknown

Source: Find a Grave 2024

Unmarked cemeteries and graves are present in Kentucky. The disturbance of human burials is a felony or misdemeanor under various Kentucky statutes including KRS 525.110 and KRS 525.120. If human remains or unmarked graves are encountered,

the Project will stop work immediately and contact law enforcement and the Kentucky OSA.

5. CONCLUSIONS AND RECOMMENDATIONS

According to the Kentucky OSA and the Kentucky Historic Resources Survey, no previously recorded archaeological sites or historic structures have been identified within the Project site or within the one-mile buffer. Two previous surveys cover less than 5% of the Project Site while an additional eleven surveys have been conducted within the one-mile buffer.

One cemetery is located within the one-mile buffer while another three are listed within the community of Davella, Kentucky, however no coordinates are available. Additionally, due to the disturbance of mining activities, the probability of significant precontact or historic resources within the Project is low.

This desktop review is for Project planning purposes, and no cultural resources field investigations have been conducted to date. However, if any county, state, and/or local permitting becomes necessary for the Project, it is possible that cultural resources investigations may be required. Such investigations could include archaeological investigations to identify NRHP-eligible archaeological sites that could be directly affected by the Project and/or an architectural survey to identify any NRHP eligible historic and architectural resources that could be directly or indirectly (visually) affected by the Project. Such cultural resources investigations would address previously recorded cultural resources as well as as-yet unrecorded resources.

6. REFERENCES

- Find A Grave. 2024. Find A Grave. www.findagrave.com Accessed February 6, 2024.
- Kentucky Heritage Council. 2024. Kentucky Historic Resources Survey. <https://heritage.ky.gov/historic-places/resources-survey/Pages/overview.aspx>. Accessed February 6, 2024.
- Kentucky Office of State Archaeology. 2024. <https://anthropology.as.uky.edu/recorded-archaeological-sites>. Accessed February 6, 2024.
- NPS. 2024. National Register Database and Research. U.S. Department of the Interior. Updated January 17, 2024. Available from: <https://www.nps.gov/subjects/nationalregister/database-research.htm>. Accessed February 6, 2024.
- NPS. 2018. NHL Data. U.S. Department of the Interior. Updated August 13, 2018. Available from: <https://www.nps.gov/subjects/nationalhistoriclandmarks/nhlldata.htm>. Accessed February 6, 2024.
- NETROnline (Nationwide Environmental Title Research). 2024. Historic Aerials and Topographic Maps. <https://www.historicaerials.com/>. Accessed February 6, 2024.
- U.S. Geological Survey (USGS). 1978. Inez, KY quadrangle, 24,000-min series. USGS, Washington, D.C.

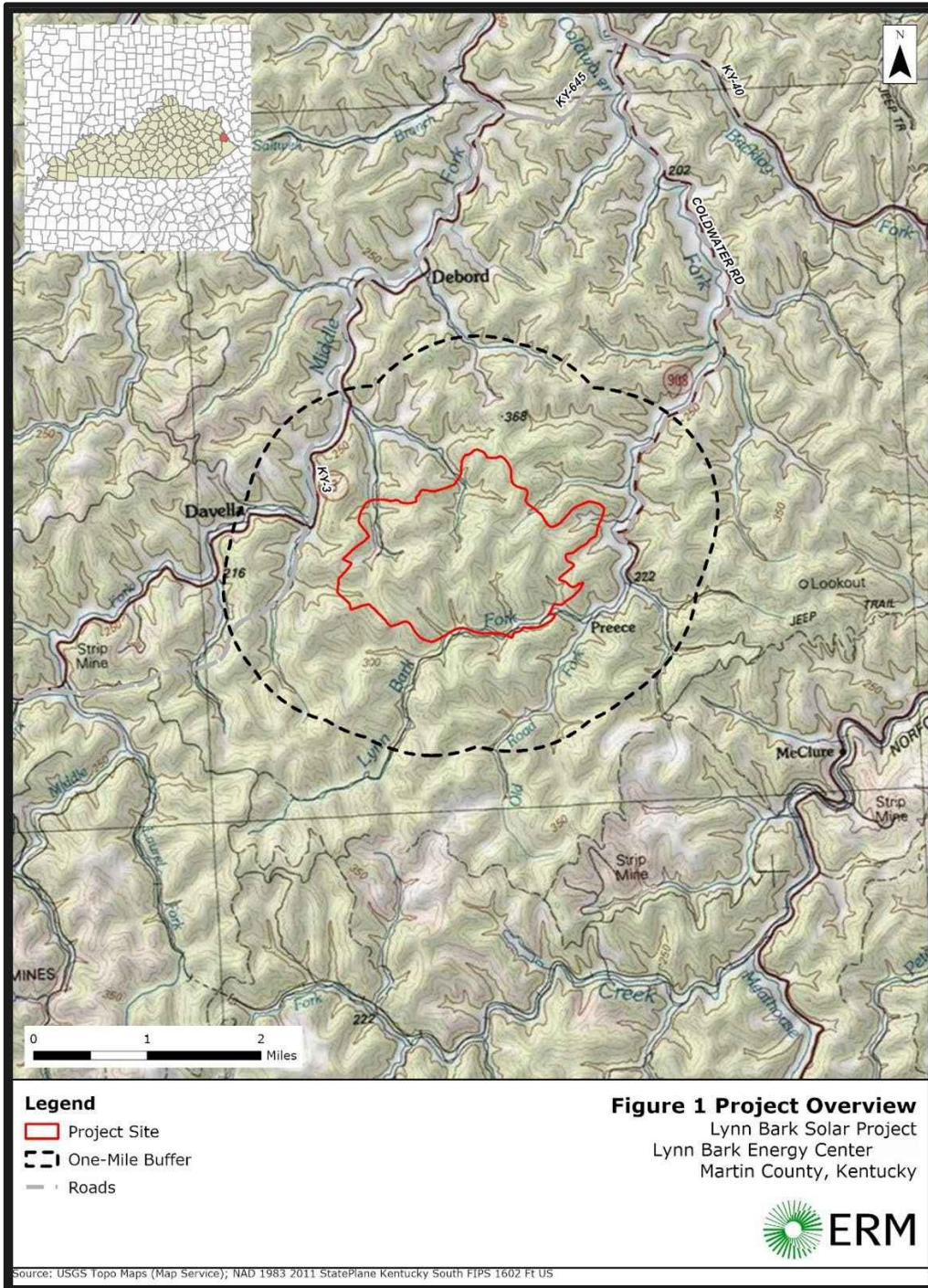


Figure 1. Project Location on a Topographic Map base.

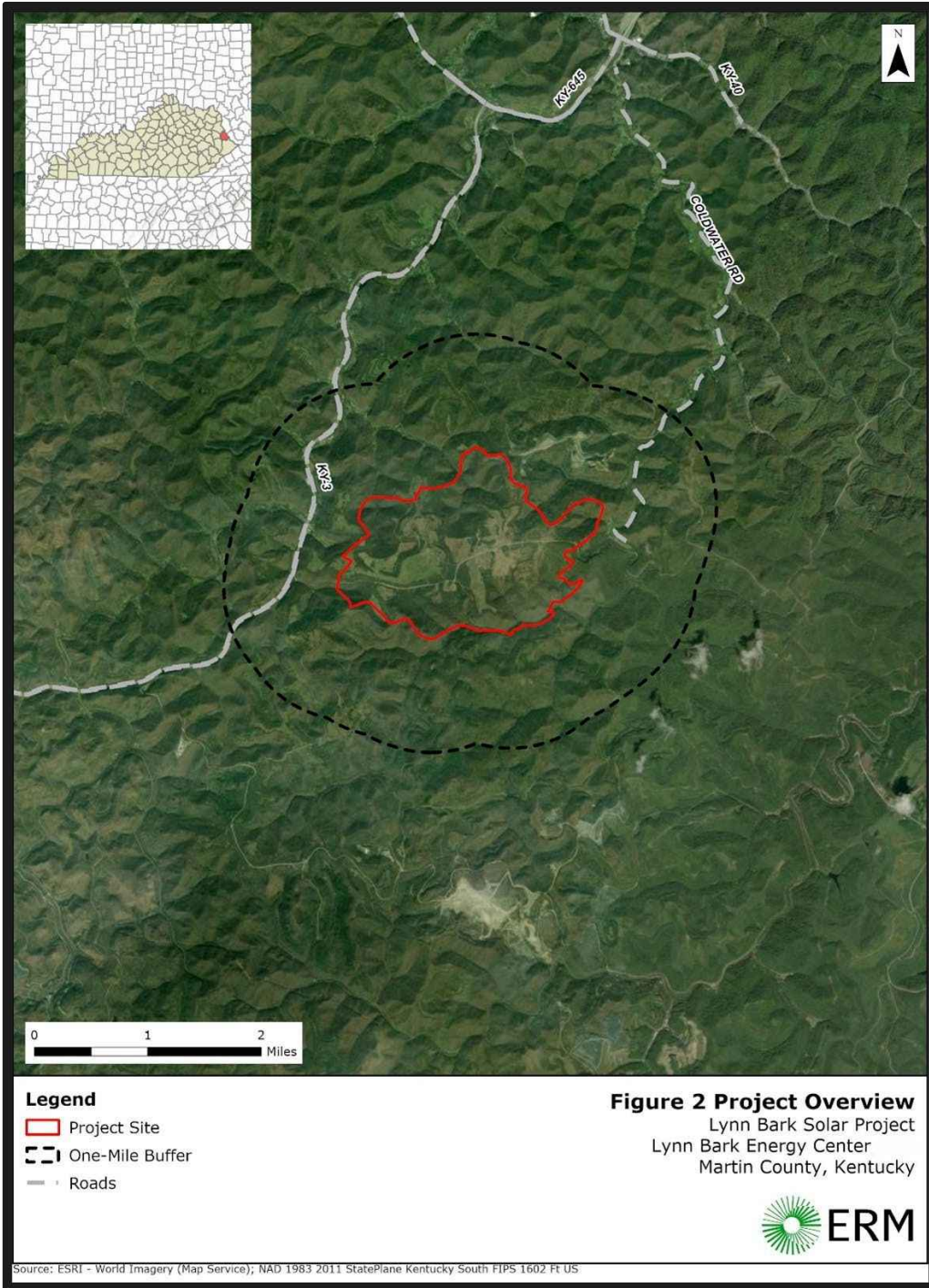


Figure 2. Project Location on an Aerial Map.

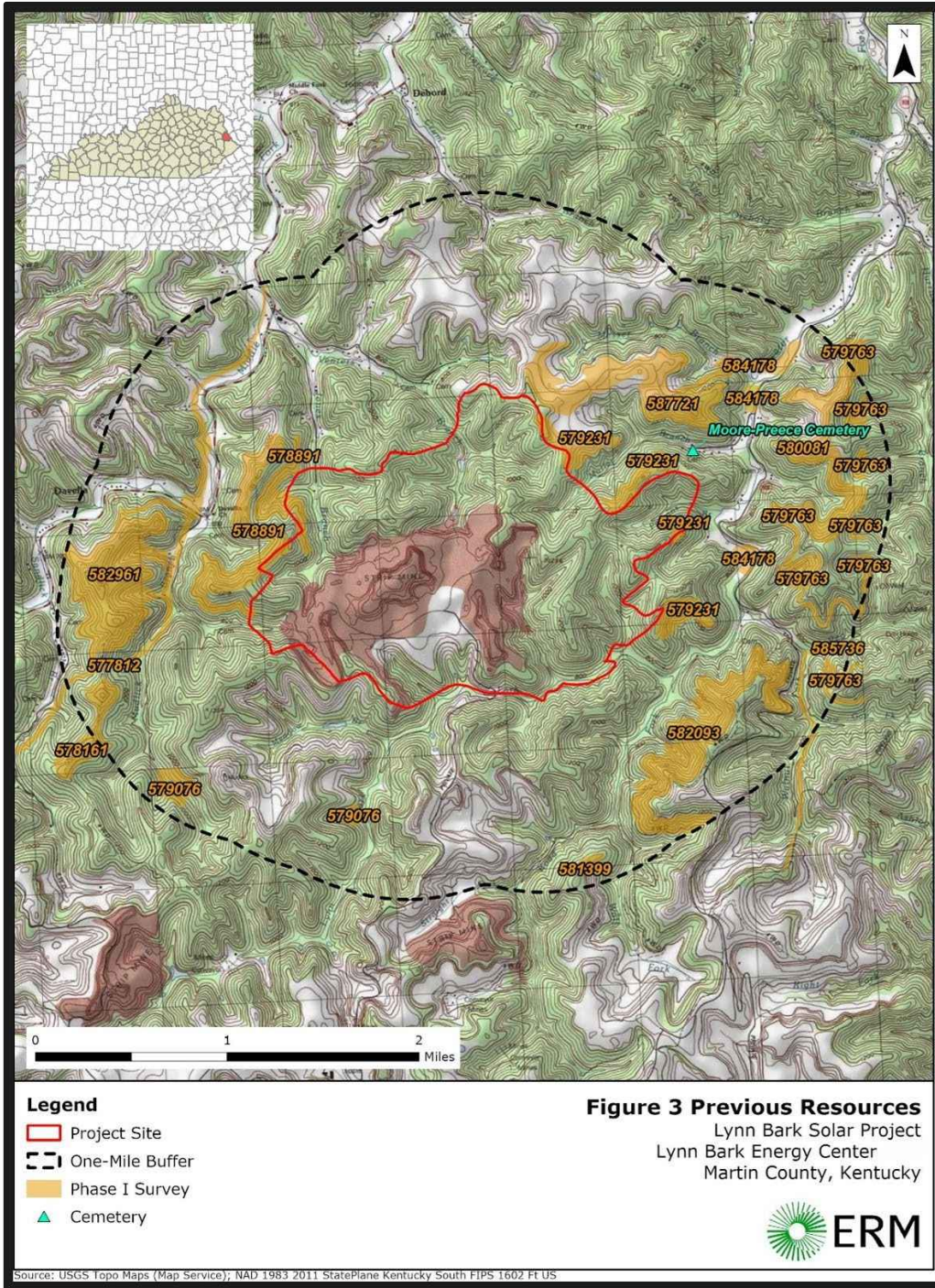


Figure 3. Previously Recorded Resources on a Topographic Map.

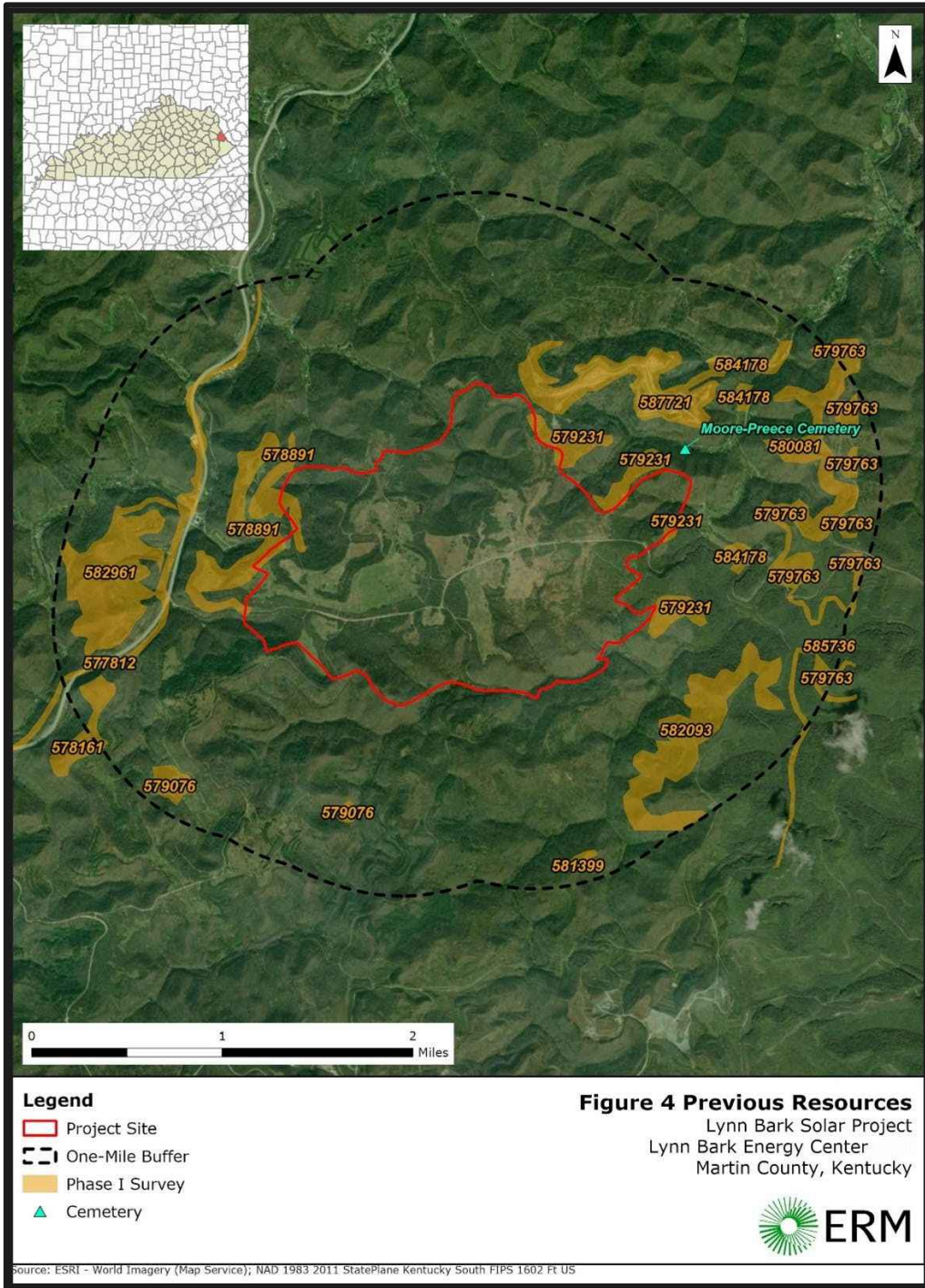

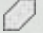


Figure 4. Previously Recorded Resources on an Aerial Map.

ATTACHMENT A CLIENT PROVIDED PROPOSED CEMETERY LOCATION

Legend

-  Intersection of Lynn Bark Fork and Meadow Branch
-  Lynn Bark


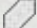


Google Earth



1 mi

Legend

-  Intersection of Lynn Bark Fork and Meadow Branch
-  Lynn Bark



Google Earth

1000 ft

