

Table 3-5. Construction Acoustic Assessment Summary Table

Locations	Predicted Levels (dBA)	
	Daytime (7:00 a.m. – 10:00 p.m.)	Nighttime (10:00 p.m. – 7:00 a.m.)
1	43.7	43.7
2	41.6	41.6
3	45.5	45.5
4	46.0	46.0
5	53.0	53.0
6*	62.1	62.1
POR01	58.6	58.6
POR02	55.4	55.4
POR03	55.8	55.8
POR04	60.2	60.2
POR05	61.5	61.5

Note: * Location 6 is a monitoring location which is also the closest Point of Reception (POR) to the Project

Table 3-7. BESS Facility Acoustic Assessment Summary Table

Locations	Predicted Levels (dBA)	
	Daytime (7:00 a.m. – 10:00 p.m.)	Nighttime (10:00 p.m. – 7:00 a.m.)
1	34.7	34.7
2	32.7	32.7
3	36.2	36.2
4	37.2	37.2
5	44.0	44.0
6*	53.2	53.2
POR01	49.8	49.8
POR02	46.5	46.5
POR03	46.8	46.8
POR04	51.5	51.5
POR05	52.9	52.9

Note: * Location 6 is a monitoring location which is also the closest Point of Reception (POR) to the Project

Figure 3-2. Maximum Construction Noise Impacts

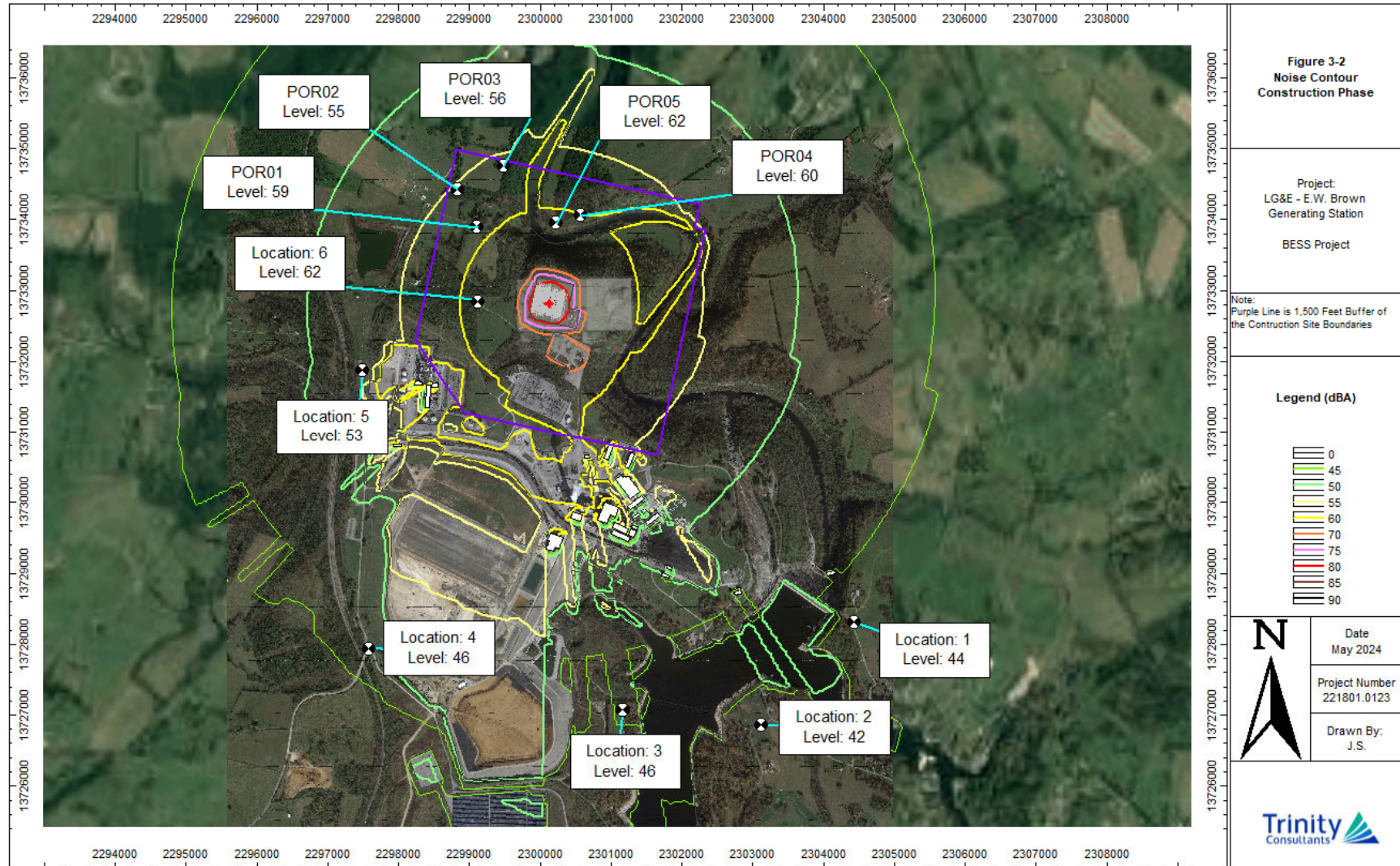


Figure 3-3. Maximum Operational Noise Impacts

