



**2022 WATER SYSTEM IMPROVEMENTS & REPLACEMENTS
BRONSTON WATER ASSOCIATION
PULASKI & WAYNE COUNTIES, KENTUCKY
ROCKY POINT SUBDIVISION WATER LINE REPLACEMENT**

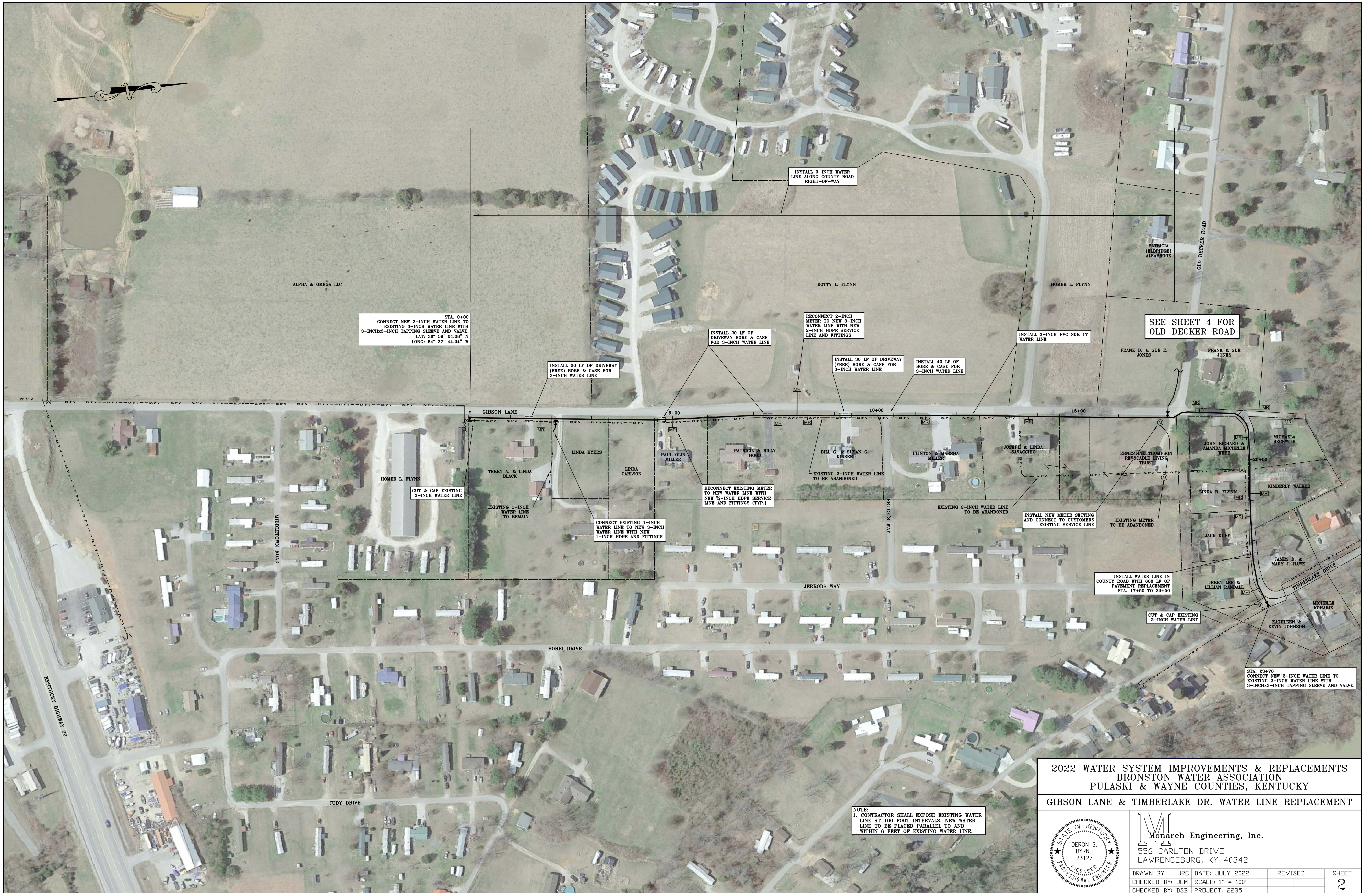


Monarch Engineering, Inc.
556 CARLTON DRIVE
LAWRENCEBURG, KY 40342

DRAWN BY: JRC	DATE: JULY 2022	REVISED	SHEET
CHECKED BY: JLM	SCALE: 1" = 100'		1
CHECKED BY: DSB	PROJECT: 2235		

NOTE:
1. CONTRACTOR SHALL EXPOSE EXISTING WATER LINE AT 100 FOOT INTERVALS. NEW WATER LINE TO BE PLACED PARALLEL TO AND WITHIN 6 FEET OF EXISTING WATER LINE.

NOTE:
ALL 3-INCH WATER LINES TO BE INSTALLED ALONG COUNTY ROAD RIGHT-OF-WAY UNLESS OTHERWISE NOTED.



STA. 0+00
 CONNECT NEW 3-INCH WATER LINE TO
 EXISTING 3-INCH WATER LINE WITH
 3-INCHx3-INCH TAPPING SLEEVE AND VALVE.
 LAT: 38° 50' 24.00" N
 LONG: 84° 37' 44.94" W

INSTALL 20 LF OF DRIVEWAY
 (FREE) BORE & CASE FOR
 3-INCH WATER LINE

INSTALL 20 LF OF DRIVEWAY BORE & CASE
 FOR 3-INCH WATER LINE

RECONNECT 2-INCH
 METER TO NEW 3-INCH
 WATER LINE WITH NEW
 2-INCH HDPE SERVICE
 LINE AND FITTINGS

INSTALL 30 LF OF DRIVEWAY
 (FREE) BORE & CASE FOR
 3-INCH WATER LINE

INSTALL 40 LF OF
 BORE & CASE FOR
 3-INCH WATER LINE

INSTALL 3-INCH PVC SDR 17
 WATER LINE

SEE SHEET 4 FOR
 OLD DECKER ROAD

CUT & CAP EXISTING
 3-INCH WATER LINE

EXISTING 1-INCH
 WATER LINE
 TO REMAIN

CONNECT EXISTING 1-INCH
 WATER LINE TO NEW 3-INCH
 WATER LINE WITH NEW
 1-INCH HDPE AND FITTINGS

RECONNECT EXISTING METER
 TO NEW WATER LINE WITH
 NEW 1/2-INCH HDPE SERVICE
 LINE AND FITTINGS (TYP.)

EXISTING 3-INCH WATER LINE
 TO BE ABANDONED

EXISTING 2-INCH WATER LINE
 TO BE ABANDONED

INSTALL NEW METER SETTING
 AND CONNECT TO CUSTOMERS'
 EXISTING SERVICE LINE

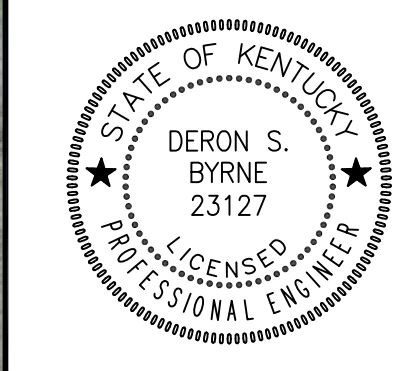
INSTALL WATER LINE IN
 COUNTY ROAD WITH 600 LF OF
 PAVEMENT REPLACEMENT
 STA. 17+50 TO 23+50

CUT & CAP EXISTING
 2-INCH WATER LINE

STA. 23+70
 CONNECT NEW 3-INCH WATER LINE TO
 EXISTING 3-INCH WATER LINE WITH
 3-INCHx3-INCH TAPPING SLEEVE AND VALVE.

NOTE:
 1. CONTRACTOR SHALL EXPOSE EXISTING WATER
 LINE AT 100 FOOT INTERVALS. NEW WATER
 LINE TO BE PLACED PARALLEL TO AND
 WITHIN 6 FEET OF EXISTING WATER LINE.

2022 WATER SYSTEM IMPROVEMENTS & REPLACEMENTS
 BRONSTON WATER ASSOCIATION
 PULASKI & WAYNE COUNTIES, KENTUCKY
 GIBSON LANE & TIMBERLAKE DR. WATER LINE REPLACEMENT



M Monarch Engineering, Inc.
 556 CARLTON DRIVE
 LAWRENCEBURG, KY 40342

DRAWN BY: JRC	DATE: JULY 2022	REVISED	SHEET
CHECKED BY: JLM	SCALE: 1" = 100'		2
CHECKED BY: DSB	PROJECT: 2235		



STA. 0+00
CONNECT NEW 3-INCH WATER LINE TO
EXISTING 6-INCH WATER LINE WITH
6-INCHx3-INCH TAPPING SLEEVE AND VALVE.
LAT: 38° 50' 47.69" N
LONG: 84° 37' 59.86" W

CUT & CAP EXISTING
2-INCH WATER LINE

INSTALL 130 LF OF
DIRECTIONAL BORE FOR
3-INCH HDPE DR9 WATER LINE

INSTALL 20 LF OF DRIVEWAY (TREE)
BORE & CASE FOR 3-INCH WATER LINE

INSTALL 3-INCH PVC SDR 17
WATER LINE

INSTALL 70 LF OF DIRECTIONAL BORE
FOR 3-INCH HDPE DR9 WATER LINE

RECONNECT EXISTING METER
TO NEW WATER LINE WITH
NEW 3/4-INCH HDPE SERVICE
LINE AND FITTINGS (TYP.)

RECONNECT 2-INCH
METER TO NEW 3-INCH
WATER LINE WITH NEW
2-INCH HDPE SERVICE
LINE AND FITTINGS

INSTALL 40 LF OF BORE & CASE
FOR 3-INCH WATER LINE

STA. 16+80
CONNECT NEW 3-INCH WATER LINE TO
EXISTING 3-INCH WATER LINE WITH
3-INCHx3-INCH TAPPING SLEEVE AND VALVE.

INSTALL 3-INCH WATER
LINE ALONG COUNTY ROAD
RIGHT-OF-WAY

INSTALL 3-INCH WATER LINE
ON PRIVATE EASEMENT AS
DIRECTED BY ENGINEER

SEE SHEET 3 FOR
GIBSON LANE &
TIMBERLAKE DRIVE

NOTES:
1. CONTRACTOR SHALL FURNISH AND INSTALL TEMPORARY CONSTRUCTION FENCING (SAFETY FENCE, ORANGE) AT EACH PRIVATE PROPERTY EASEMENT DURING CONSTRUCTION OF WATER LINE. FENCING SHALL BE INSTALLED ALONG THE ENTIRE LENGTH OF THE PROPERTY OWNER, OR AS DIRECTED BY THE ENGINEER. SEE PLAN SHEET TP-1 FOR DETAILS.
2. TEMPORARY CONSTRUCTION FENCING SHALL REMAIN IN PLACE DURING ALL EXCAVATION AND INSTALLATION OF WATER LINE ALONG EACH PRIVATE PROPERTY EASEMENT. TEMPORARY CONSTRUCTION FENCING SHALL REMAIN IN PLACE FOR THE ENTIRETY OF THE PROJECT OR AS DIRECTED BY THE ENGINEER.

NOTE:
1. CONTRACTOR SHALL EXPOSE EXISTING WATER LINE AT 100 FOOT INTERVALS. NEW WATER LINE TO BE PLACED PARALLEL TO AND WITHIN 6 FEET OF EXISTING WATER LINE.

2022 WATER SYSTEM IMPROVEMENTS & REPLACEMENTS
BRONSTON WATER ASSOCIATION
PULASKI & WAYNE COUNTIES, KENTUCKY
OLD DECKER ROAD WATER LINE REPLACEMENT



Monarch Engineering, Inc.
556 CARLTON DRIVE
LAWRENCEBURG, KY 40342

DRAWN BY: JRC	DATE: JULY 2022	REVISED	SHEET
CHECKED BY: JLM	SCALE: 1" = 100'		3
CHECKED BY: DSB	PROJECT: 2235		