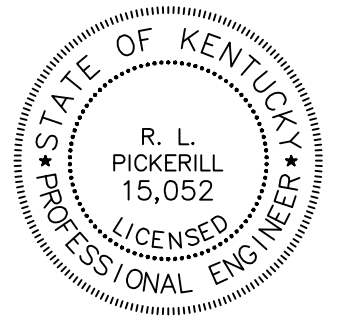


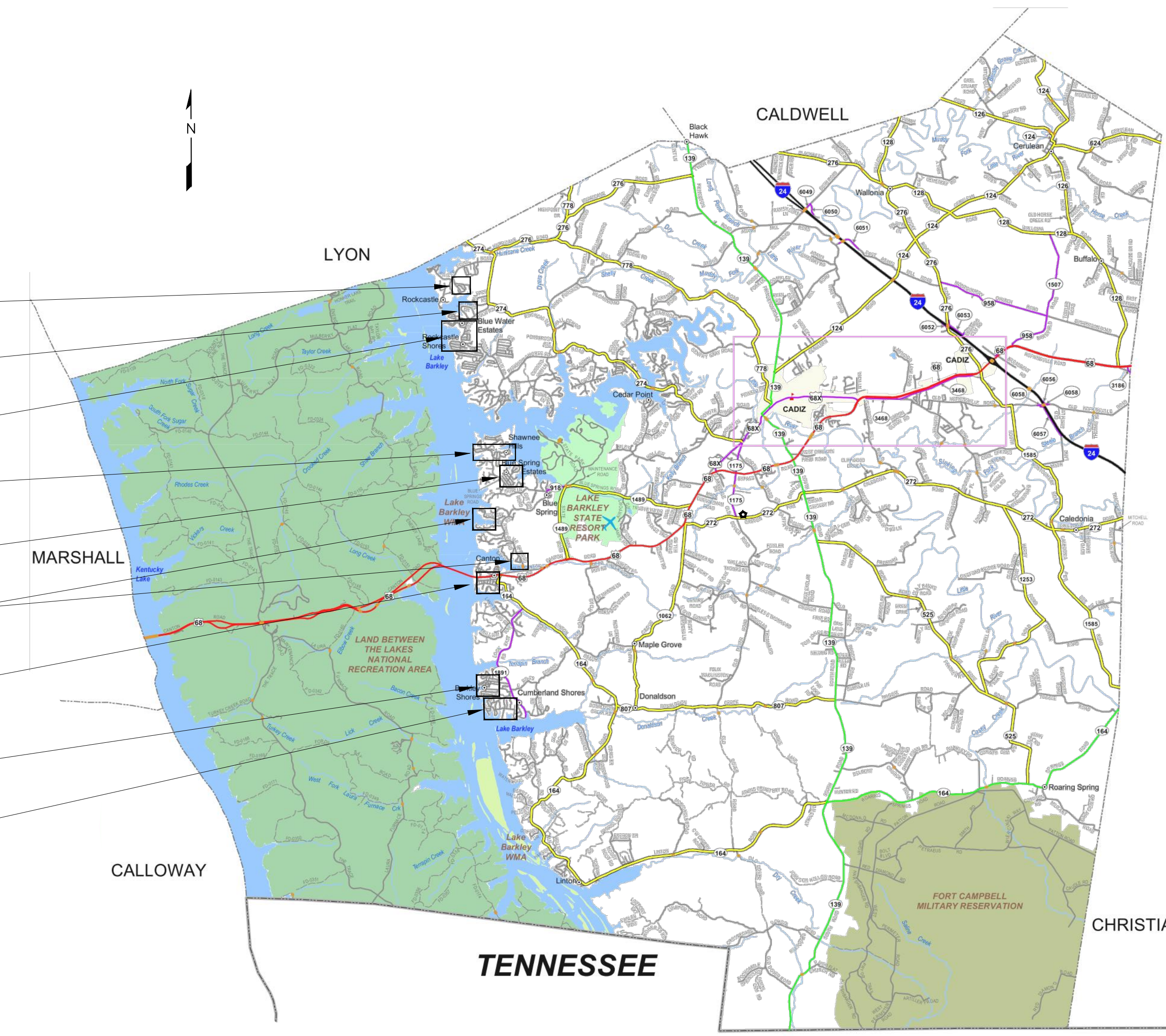
LAKESIDE AREA WATER LINE REPLACEMENT

BARKLEY LAKE WATER DISTRICT TRIGG COUNTY, KENTUCKY CONTRACT NO. 586-24-01 JANUARY, 2024

CONTRACT 586-24-01
JANUARY, 2024



LAKESIDE AREA WATERLINE REPLACEMENT
BARKLEY LAKE WATER DISTRICT
CONTRACT NO. 586-24-01



- DIV. A-GRAYS
- DIV. A-SOLOMAN CIRCLE
- DIV. D-ROCKCASTLE SHORES
- DIV. C-SHAWNEE HILLS
- DIV. B-BLUE SPRINGS BLVD.
- DIV. E-CANTON NORTH
- DIV. F-CANTON SOUTH
- DIV. G-CUMBERLAND SHORES NORTH
- DIV. H-CUMBERLAND SHORES SOUTH

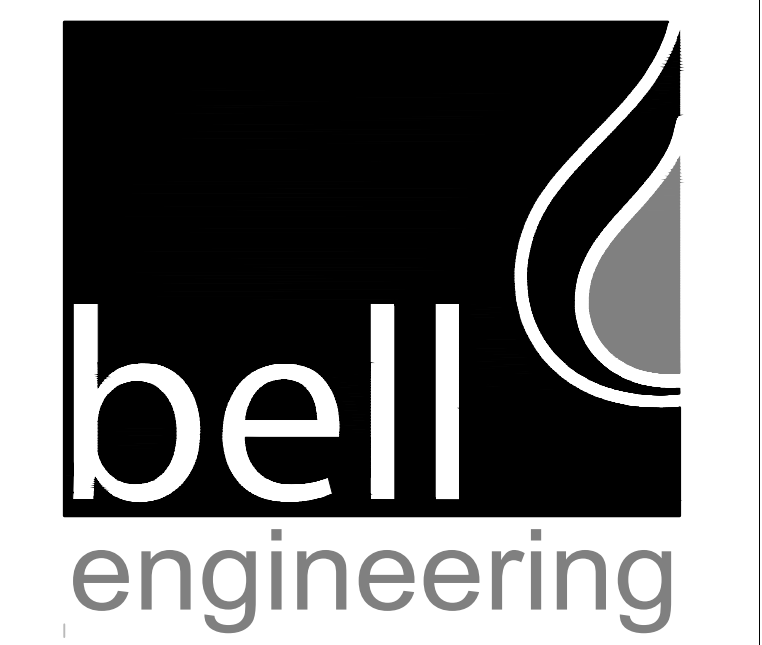
TRIGG COUNTY
VICINITY MAP
NOT TO SCALE

COMPLETE DRAWING SET INCLUDES:

GENERAL NOTES, VICINITY MAP, LEGEND	SHEET 01 OF 01
DIVISION A	
LINE A - SOLOMAN DR.	STA. 0+00 - STA. 27+21 SHEET 01 OF 05
LINE A - SOLOMAN DR.	STA. 27+16 - STA. 38+28 (END) SHEET 02 OF 05
LINE B - GOOSE HOLLOW RD	STA. 0+00 - STA. 16+70 (END) SHEET 03 OF 05
LINE C - GRAYS HILLVIEW DR.	STA. 0+00 - STA. 14+60 SHEET 04 OF 05
LINE D - GRAYS HILLVIEW DR.	STA. 0+00 - STA. 12+13 SHEET 04 OF 05
LINE E - GRAYS HILLTOP DR.	STA. 0+00 - STA. 6+00 (END) SHEET 04 OF 05
LINE C - HILLSIDE CIRCLE	STA. 14+60 - STA. 25+10 (END) SHEET 05 OF 05
LINE D - HILLSIDE CIRCLE	STA. 12+13 - STA. 17+25 (END) SHEET 05 OF 05
LINE F - GRAYS HILLVIEW DR.	STA. 0+00 - STA. 6+34 (END) SHEET 05 OF 05
DIVISION B	
LINE A - BLUESPRINGS BLVD.	STA. 0+00 - STA. 19+28 SHEET 01 OF 05
LINE B - BLUESPRINGS BLVD.	STA. 0+00 - STA. 16+70 SHEET 01 OF 05
LINE B - BLUESPRINGS BLVD.	STA. 16+70 - STA. 31+55 SHEET 02 OF 05
LINE C - VALLEY DRIVE	STA. 0+00 - STA. 10+30 SHEET 03 OF 05
LINE C1 - VALLEY DRIVE	STA. 0+00 - STA. 14+43 SHEET 03 OF 05
LINE E1 - SUNRISE DRIVE	STA. 0+00 - STA. 13+70 SHEET 03 OF 05
LINE D - SHADY LANE	STA. 0+00 - STA. 12+95 SHEET 04 OF 05
LINE D1 - EAST SHADY LN.	STA. 0+00 - STA. 6+70 SHEET 03 OF 05
LINE E - SUNRISE DRIVE	STA. 0+00 - STA. 13+70 SHEET 04 OF 05
LINE F - WEST PARK PLACE	STA. 0+00 - STA. 10+45 SHEET 05 OF 05
LINE G - EAST PARK PLACE	STA. 0+00 - STA. 9+15 SHEET 05 OF 05
DIVISION C	
LINE A - SHAWNEE TRAIL	STA. 0+00 - STA. 25+87 SHEET 01 OF 04
LINE B - CHEROKEE DRIVE	STA. 0+00 - STA. 3+65 SHEET 01 OF 04
LINE B - CHEROKEE DRIVE	STA. 3+65 - STA. 19+45 SHEET 02 OF 04
LINE C - SEMINOLE DRIVE	STA. 0+00 - STA. 13+43 SHEET 02 OF 04
LINE D - BAYSHORE DRIVE	STA. 0+00 - STA. 42+11 SHEET 03 OF 04
LINE D1 - BAYSHORE DRIVE	STA. 0+00 - STA. 4+44 SHEET 03 OF 04
LINE E - DAFFODIL DRIVE	STA. 0+00 - STA. 8+72 SHEET 04 OF 04
LINE F - HILL STREET	STA. 0+00 - STA. 3+05 SHEET 04 OF 04
DIVISION D	
LINE A - CAROL DRIVE	STA. 0+00 - STA. 14+10 SHEET 01 OF 05
LINE B - NANCY AVENUE	STA. 0+00 - STA. 12+80 SHEET 01 OF 05
LINE B1 - NANCY AVENUE	STA. 0+00 - STA. 8+30 SHEET 02 OF 05
LINE B2 - ZALETEL COURT	STA. 0+00 - STA. 2+62 SHEET 02 OF 05
LINE C - GOLDENROD DRIVE	STA. 0+00 - STA. 9+75 SHEET 02 OF 05
LINE D - OAK COURT	STA. 0+00 - STA. 5+15 SHEET 02 OF 05
LINE E - FERRILL CIRCLE	STA. 0+00 - STA. 28+85 SHEET 03 OF 05
LINE F - CAPPER LANE	STA. 0+00 - STA. 8+25 SHEET 03 OF 05
LINE G - KENTUCKY DRIVE	STA. 0+00 - STA. 8+10 SHEET 03 OF 05
LINE H - HAYDEN DRIVE	STA. 0+00 - STA. 8+85 SHEET 04 OF 05
LINE I - BLUE RIVER ROAD	STA. 0+00 - STA. 16+91 SHEET 04 OF 05
LINE I - BLUE RIVER ROAD	STA. 16+91 - STA. 33+61 SHEET 05 OF 05
LINE J - SOUTHVIEW DRIVE	STA. 0+00 - STA. 13+85 SHEET 05 OF 05
DIVISION E	
LINE A - HOLIDAY WAY	STA. 0+00 - STA. 35+95 SHEET 01 OF 03
LINE A - HOLIDAY WAY	STA. 0+00 - STA. 38+77 SHEET 02 OF 03
LINE B - CARDINAL CIRCLE	STA. 0+00 - STA. 21+87 SHEET 02 OF 03
LINE C - HERON POINT	STA. 0+00 - STA. 15+13 SHEET 02 OF 03
LINE D - CANTONLAKESHORE DRIVE	STA. 0+00 - STA. 23+66 SHEET 03 OF 03
LINE E - CENTERVIEW DRIVE	STA. 0+00 - STA. 9+50 SHEET 03 OF 03
LINE F - CROSS STREET	STA. 0+00 - STA. 6+00 SHEET 03 OF 03
DIVISION F	
LINE A - TERRACE LANE	STA. 0+00 - STA. 27+72 SHEET 01 OF 05
LINE B - ARROWHEAD TRAIL	STA. 0+00 - STA. 13+23 SHEET 02 OF 05
LINE C - FRONTIER AVENUE	STA. 0+00 - STA. 16+77 SHEET 02 OF 05
LINE C - FRONTIER AVENUE	STA. 16+77 - STA. 28+27 SHEET 03 OF 05
LINE D - BARKLEY TRAIL	STA. 0+00 - STA. 12+47 SHEET 03 OF 05
LINE E - PINE LANE	STA. 0+00 - STA. 4+90 SHEET 04 OF 05
LINE F - OAK LANE	STA. 0+00 - STA. 5+96 SHEET 04 OF 05
LINE G - CEDAR LANE	STA. 0+00 - STA. 7+14 SHEET 04 OF 05
LINE H - MAPLE LANE	STA. 0+00 - STA. 8+75 SHEET 05 OF 05
LINE I - LITTLEJOHN ROAD	STA. 0+00 - STA. 4+53 SHEET 05 OF 05
DIVISION G	
LINE A - RIDGE DRIVE	STA. 0+00 - STA. 28+07 SHEET 01 OF 04
LINE B - CUMBERLAND DRIVE	STA. 0+00 - STA. 18+80 SHEET 02 OF 04
LINE B - CUMBERLAND DRIVE	STA. 18+80 - STA. 53+84 SHEET 03 OF 04
LINE C - CHARLOTTE COVE	STA. 0+00 - STA. 18+26 SHEET 04 OF 04
DIVISION H	
LINE A - SCENIC DRIVE	STA. 0+00 - STA. 7+40 SHEET 01 OF 06
LINE B - HORSESHOE DRIVE	STA. 0+00 - STA. 30+05 SHEET 01 OF 06
LINE B - HORSESHOE DRIVE	STA. 30+05 - STA. 36+03 SHEET 02 OF 06
LINE C - HICKORY DRIVE	STA. 0+00 - STA. 12+30 SHEET 02 OF 06
LINE D - BEECHWOOD DRIVE	STA. 0+00 - STA. 14+26 SHEET 03 OF 06
LINE E - BLUEBIRD DRIVE	STA. 0+00 - STA. 13+15 SHEET 04 OF 06
LINE F - REDBIRD DRIVE	STA. 0+00 - STA. 17+53 SHEET 04 OF 06
LINE F - REDBIRD DRIVE	STA. 17+53 - STA. 21+10 SHEET 05 OF 06
LINE G - BEAR RUN ROAD	STA. 0+00 - STA. 21+10 SHEET 05 OF 06
LINE H - NORTH LAKESHORE DR.	STA. 0+00 - STA. 6+25 SHEET 06 OF 06
LINE H - SOUTH LAKESHORE DR.	STA. 0+00 - STA. 10+27 SHEET 06 OF 06
WATERLINE DETAILS	SHEET D1 OF 02
WATERLINE DETAILS	SHEET D2 OF 02

CONTACTS:

AMBULANCE / FIRE	TRIGG DISPATCH.....911
LAW ENFORCEMENT	TRIGG DISPATCH.....911
WATER UTILITY	BARKLEY LAKE WATER DISTRICT.....(270)522-8425
ELECTRIC	PENNYRILE RURAL ELECTRIC.....(270)522-6678
TELECOMMUNICATIONS	AT&T.....1-800-289-2020
	BELLSOUTH.....1-888-757-6500
CABLE TV	MEDIACOM.....1-800-874-2924



2480 fortune drive, suite 350
Lexington, Kentucky 40509
P: 859-278-5412 | F: 859-278-2911
www.hkbell.com

FACSIMILES OF LICENSED PROFESSIONAL ENGINEER AND/OR LAND SURVEYOR SEALS, IF AFFIXED TO THIS DOCUMENT, SHALL BE CONSIDERED LEGITIMATE ONLY IF SIGNED AND DATED BY THE REGISTRANT.

BID NOTE:
KENTUCKY STATUTES (KRS 367.4801 THROUGH 367.4917) REQUIRE THAT ALL EXCAVATORS PLANNING EXCAVATION OR DEMOLITION WORK SHALL NOTIFY ALL UTILITY COMPANIES IN THE AREA AND/OR AN UNDERGROUND PROTECTION SERVICE SUCH AS BUD (1-800-752-6007 OR 811) AT LEAST TWO (2) WORKING DAYS BEFORE COMMENCING WORK TO ALERT UTILITY COMPANIES IN THE AREA WITH UNDERGROUND FACILITIES OF THE PLANNED EXCAVATION OR DEMOLITION ACTIVITIES.

- CLIENT REVIEW
- BELL (QA) REVIEW
- DIVISION OF WATER REVIEW
- BID DOCUMENTS
- RECORD DRAWINGS
-

I:\PROJECTS\PROJECTS\USE Case Borley_M0102_Lakeside Area Waterline Replacement\Drawings\FINAL DRAWINGS\COVER & DETAILS\COVER & DETAILS.dwg - 0:30am by mmk
 Plot Style: 000-BELL-STD.ctb

GENERAL NOTES AND SPECIFICATIONS

MINIMUM COVER OVER WATER PIPE TO BE 36" UNLESS OTHERWISE NOTED.

MINIMUM COVER OVER VALVE NUT TO BE 12" (NO PAYMENT FOR EXTRA DEPTH TRENCH).

CONCRETE BLOCKING OF FITTINGS REQUIRED AT NO EXTRA COST.

THE CONTRACTOR SHALL HAVE THE OPTION OF USING FITTINGS OR EXTRA DEPTH TRENCHING AT ALL LOCATIONS WHERE VERTICAL BENDS ARE SHOWN. EITHER METHOD WILL BE AT NO EXTRA COST TO OWNER ABOVE THAT BID FOR TRENCHING, TRENCHING, LAYING AND BACKFILLING PIPE AND FITTINGS, AND SHALL BE APPROVED BY THE ENGINEER PRIOR TO INSTALLATION.

LAY NEW MAIN UNDER EXISTING WATER LINES AND GAS LINES, EXCEPT AS NOTED OTHERWISE OR DETERMINED IN THE FIELD. (NO PAYMENT FOR EXTRA DEPTH TRENCH).

DISTANCES SHOWN ALONG PIPELINE ARE HORIZONTAL DISTANCES BETWEEN HORIZONTAL ANGLES OF 90° AND/OR MATCH LINES.

LOCATIONS SHOWN FOR EXISTING UTILITIES ARE APPROXIMATE ONLY. EXACT LOCATIONS MUST BE DETERMINED BY CONTRACTOR BEFORE EXCAVATING FOR NEW FACILITIES.

THE OWNER SHALL PROCURE ALL EASEMENTS PRIOR TO CONSTRUCTION.

ON STREET, HIGHWAY, DRIVEWAY, OR SIDEWALK CROSSING, CONTRACTOR SHALL FILL TRENCH TO WITHIN 6 INCHES OF THE SURFACE WITH KENTUCKY DEPARTMENT OF HIGHWAYS NO. 57 CRUSHED STONE.

ANY SIDEWALKS DAMAGED MUST BE REPLACED AT NO ADDITIONAL COST TO THE OWNER.

BEDDING SHALL BE A MINIMUM OF 6 INCHES DEPTH AND MEET ASTM D2321-83A.

ALL LINE VALVES AND HYDRANT VALVES TO BE DUCTILE IRON, MECHANICAL JOINT, RESILIENT WEDGE GATE VALVES W/ NON-RISING STEM, AMERICAN SERIES 2500-1 OR EQUAL.

CORP STOPS, SADDLES, AND CONNECTION HARDWARE ARE TO BE MANUFACTURED BY THE FORD METER BOX CORPORATION. CONNECTOR NUTS ARE TO BE THE "PACK" TYPE WITH STIFFENERS.

FOR SERVICE RECONNECTIONS, CTS TUBING EQUAL IN SIZE TO THE EXISTING SERVICE SHALL BE USED. INSTALL INSERTS IN ALL CONNECTIONS

WHERE BRANCH LINES ARE TO BE CONNECTED TO THE NEW WATERLINE, THE CONTRACTOR SHALL PERFORM THE WORK IN SUCH A MANNER AS TO ALLOW THE VALVE ON THE EXISTING LINE TO REMAIN IN SERVICE.

EXCAVATED MATERIALS FROM TRENCHES AND TUNNELS, IN EXCESS OF QUANTITY REQUIRED FOR TRENCH BACKFILL, SHALL BE DISPOSED OF BY THE CONTRACTOR. IT SHALL BE THE RESPONSIBILITY OF THE CONTRACTOR TO OBTAIN LOCATION OR PERMITS FOR ITS DISPOSAL.

WHERE SOD IS DESTROYED IN AREAS MAINTAINED EQUIVALENT TO RESIDENCE YARDS, PASTURES, THIN GRASS OR COVER CROPS ARE DESTROYED BY TRENCHING, LAYING, BACKFILLING, OR TUNNELING OPERATIONS, SURFACE SHALL BE PREPARED BY DISKING, FERTILIZING, AND SEEDING, AS REQUIRED BY THE OWNER OR THE DEPARTMENT OF HIGHWAYS, WHICH SHALL TAKE PRECEDENCE.

IN OTHER AREAS, BACKFILL MATERIAL MUST BE UNIFORMLY RIDGED OVER TRENCH, AND EXCESS HAULED AWAY, WITH NO EXCAVATED ROCK OVER 1 1/2 INCHES DIAMETER OR POCKETS OF CRUSHED ROCK OR GRAVEL IN TOP 12 INCHES OF BACKFILL.

ALL ROCK, INCLUDING CRUSHED ROCK OR GRAVEL FROM CONSTRUCTION, MUST BE REMOVED FROM YARDS AND FIELDS. STREETS AND WALKS SHALL BE BROOMED TO REMOVE ALL EARTH AND LOOSE ROCK IMMEDIATELY FOLLOWING BACKFILLING.

WATER LINES MUST BE LOCATED AT A MINIMUM LATERAL DISTANCE OF 10 FEET FROM ANY EXISTING OR FUTURE SEWER LINES AND SANITARY SEWER MANHOLES MEASURED FROM OUTSIDE DIAMETERS. WHERE A WATER LINE MUST BE PLACED IN THE SAME TRENCH AS A GRAVITY SEWER LINE, THE WATER LINE MUST BE LOCATED ON A SHELVE 2 FEET ABOVE AND 2 FEET TO THE SIDE OF THE SEWER LINE.

CONTRACTOR TO FURNISH CONCRETE BLOCKING AT ALL BENDS, TEES, PLUGS, AND HYDRANTS, PER DETAILS.

PLACE ALL BLOCKING IN A MANNER WHICH WILL NOT ENCASE THE FITTING OR CONTACT THE JOINT/BOLTS IN ANY WAY. FITTINGS TO BE WRAPPED WITH 6 MIL PLASTIC MINIMUM.

CONTRACTOR TO PLATE ALL ROAD CROSSINGS DURING CONSTRUCTION.

REGRADE & RESEED ALL AREAS DISTURBED BY THE CONSTRUCTION ACTIVITIES.

THE CONTRACTOR IS TO PROVIDE TRAFFIC CONTROL DURING THE CONSTRUCTION ACTIVITIES.

THE CONTRACTOR IS RESPONSIBLE FOR THE LOCATION AND PROTECTION OF EXISTING UTILITIES.

EXISTING WATERLINES ARE TO REMAIN IN SERVICE UNTIL THE NEW LINES ARE TESTED, DISINFECTED, AND READY FOR USE.

ANY PLANNED INTERRUPTIONS OF SERVICE TO FACILITATE THE TIE-INS OR OTHER WORK IS TO BE COORDINATED WITH THE BARKLEY LAKE WATER DISTRICT.

EXISTING PIPELINES TO BE REPLACED ARE PRIMARILY ASBESTOS-CEMENT (AC) PIPE AND POSSIBLY SOME PVC. CONTRACTOR IS TO KEEP AN ADEQUATE STOCK OF REPAIR MATERIALS ON HAND TO REPAIR ANY EXISTING WATER MAINS OR SERVICES DAMAGED DURING THE INSTALLATION OF THE NEW MAINS/SERVICES.

ANY AC PIPE OR PIECES OF AC PIPE REMOVED FROM THE TRENCH ARE TO BE DOUBLE-BAGGED IMMEDIATELY UPON REMOVAL, AND DISPOSED OF IN A LEGAL MANNER. THE CONTRACTOR SHALL PROVIDE PROOF IN WRITING OF THE DISPOSAL FROM AN APPROVED DISPOSAL SITE.

THE LOCATION OF TELEPHONE UTILITIES SHOWN ON THE DRAWINGS ARE BASED ON INFORMATION DERIVED FROM TELEPHONE COMPANY DRAWINGS. THE ACTUAL LOCATION OF TELEPHONE UTILITIES SHALL BE DETERMINED IN THE FIELD BY THE CONTRACTOR PRIOR TO CONSTRUCTION. REALIGNMENT OF THE WATER MAIN MAY BE REQUIRED TO MAINTAIN A 5 FOOT MINIMUM SEPARATION BETWEEN THE EXISTING TELEPHONE UTILITIES AND THE PROPOSED WATER MAIN AT NO EXTRA COST TO THE OWNER.

DISINFECTION SPECIFICATION

DISINFECTION SHALL BE IN ACCORDANCE WITH 401 KAR 8:150, AS WELL AS THE FOLLOWING. PRIOR TO ACCEPTANCE THE CONTRACTOR SHALL DISINFECT ALL WATER LINES CONSTRUCTED.

PRIOR TO STARTING DISINFECTION, ALL WATER MAINS MUST BE THOROUGHLY FLUSHED TO REMOVE MUD, ROCKS, ETC. DISINFECTION WILL THEN BE ACCOMPLISHED BY THE ADDING OF CHLORINE SOLUTION WHILE FILLING THE MAIN TO OBTAIN THE INITIAL 50 PPM OF CHLORINE. THE CONTRACTOR SHALL SUPPLY ALL EQUIPMENT, LABOR, ETC., NECESSARY FOR FLUSHING AND DISINFECTING THE MAINS.

DISINFECTION SHALL BE ACCOMPLISHED BY FILLING THE NEW AND/OR REPAIRED PORTIONS OF THE SYSTEM WITH WATER HAVING A CHLORINE CONTENT OF AT LEAST 50 PPM AND AT THE END OF A 24 HOUR CONTACT TIME A RESIDUAL OF AT LEAST 25 PPM SHALL REMAIN. AT THE END OF THE 24 HOUR CONTACT PERIOD, ALL THE STERILIZED SURFACES AND AREAS SHALL BE THOROUGHLY FLUSHED FROM THE WATER SYSTEM.

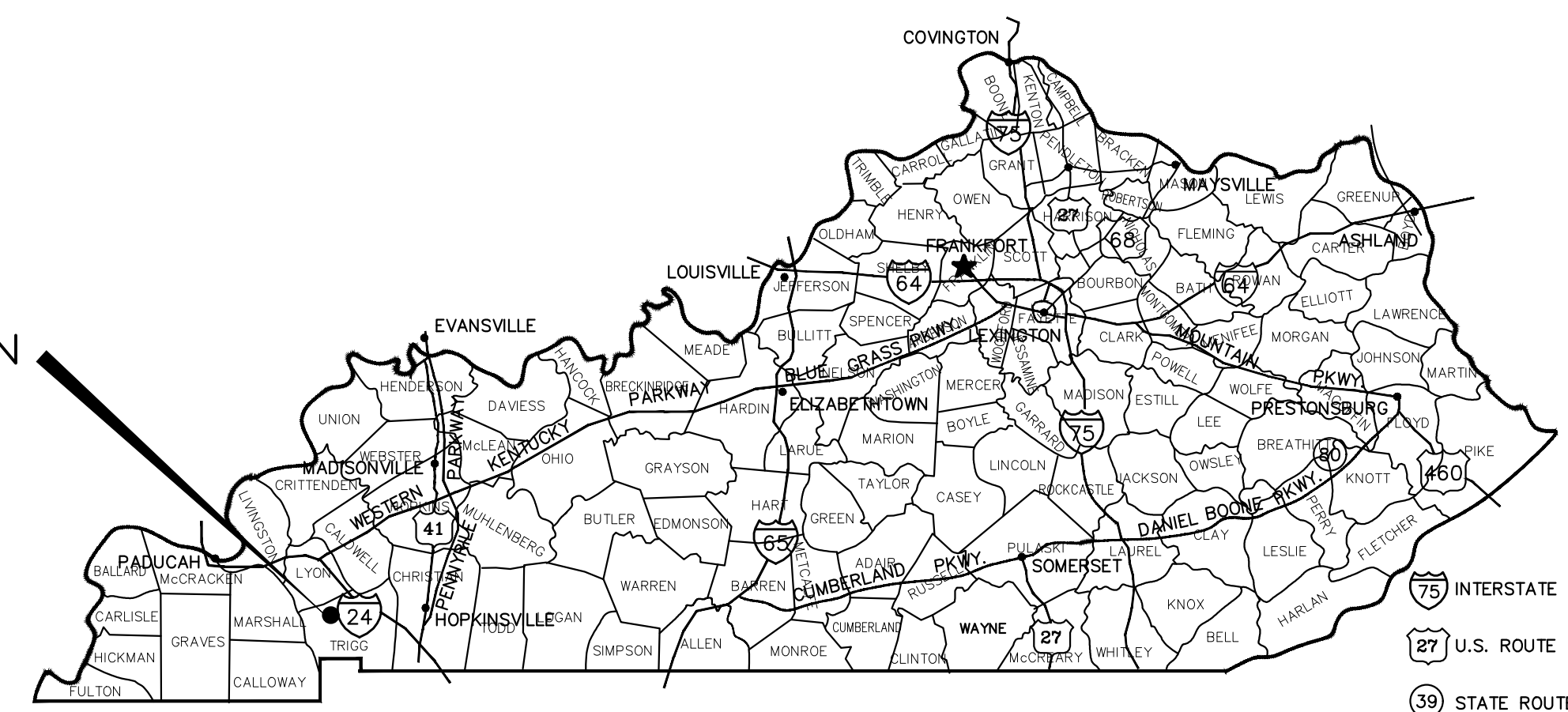
FOR TIE-INS TO AN EXISTING SYSTEM SUCH AS TAPPING VALVES WHERE KEEPING THE MAIN OUT OF SERVICE WOULD RESTRICT SERVICE TO EXISTING CUSTOMERS, DISINFECTION SHALL CONSIST OF THOROUGHLY CLEANING THE NEW PART WITH A SOLUTION CONTAINING NOT LESS THAN 200 MG/L (PPM) CHLORINE.

AFTER INITIAL DISINFECTION AND FLUSHING, THE CONTRACTOR WILL COLLECT WATER SAMPLES AND TRANSPORT THEM TO AN ACCREDITED LABORATORY FOR BACTERIOLOGICAL TESTING.

THE NUMBER OF WATER SAMPLES REQUIRED IS ONE PER MILE OF CONTINUOUS WATER MAIN WITH A MINIMUM OF 2 SAMPLES PER SECTION OF NEW MAIN. IF ANY OF THE SAMPLES ARE FOUND TO BE POSITIVE OR CONTAIN CONFLUENT GROWTH, THE CONTRACTOR SHALL REPEAT THE DISINFECTION PROCEDURE UNTIL THE REQUIRED NUMBERS OF NEGATIVE SAMPLES ARE OBTAINED.

CHLORINATED WATER SHALL BE DISPOSED OF IN ACCORDANCE WITH 401 KAR 8:031 AND 8:020, WHICH STATE THAT THE ALLOWABLE IN STREAM CONCENTRATION OF CHLORINE IS 10 UG/L. THE CONTRACTOR SHALL SUBMIT, IN WRITING TO THE ENGINEER, THE METHOD HE PROPOSES FOR DECHLORINATING. RECOMMENDED CHEMICALS ARE GIVEN IN AWWA C651-86.

PROJECT LOCATION



VICINITY MAP
NOT TO SCALE

LEGEND:

PROPOSED WATER LINE	
EXISTING WATER LINE	
NEW FLUSH HYDRANT ASSEMBLY	
NEW AUTOMATIC AIR-RELEASE VALVE	
EXISTING UTILITY EASEMENT	
EXISTING FENCE	
ROAD RIGHT-OF-WAY	
TELECOMMUNICATIONS LINES	
PROPERTY LINE	
NATURAL GAS LINE	
GATE VALVE ASSEMBLY	
TELECOMMUNICATIONS PEDESTAL	
EXISTING FIRE/FLUSH HYD.	
EXISTING WATER METER	
TEMPORARY BENCHMARK	
HOUSE NO.	

EROSION PREVENTION AND SEDIMENT CONTROL

THE CONTRACTOR SHALL SUBMIT A NOTICE OF INTENT (NOI) TO THE KENTUCKY DIVISION OF WATER AT LEAST 48 HOURS BEFORE ANY CONSTRUCTION ACTIVITY BEGINS.

THE CONTRACTOR SHALL SUBMIT A COPY OF THE NOTICE OF INTENT (NOI) TO THE LOCAL MUNICIPALITY.

THE CONTRACTOR SHALL PREPARE AND IMPLEMENT A "STORM WATER POLLUTION PREVENTION OR BEST MANAGEMENT PRACTICES (BMP) PLAN" AND KEEP A COPY OF THE PLAN ON SITE. THE PLAN SHALL BE PREPARED ACCORDING TO THE CURRENT EDITION OF THE KENTUCKY DIVISION OF WATER'S "EROSION PREVENTION AND SEDIMENT CONTROL PLAN FIELD GUIDE".

ALL STORM DRAINS THAT DISCHARGE INTO A DRAINAGE CHANNEL, STREAM, ETC., AND NOT ONTO AN OPEN FIELD SHALL HAVE AN INLET SEDIMENT CONTROL DEVICE SIMILAR TO THE SILTSACK AS MANUFACTURED BY ACF ENVIRONMENTAL, OR DANDY BAG II BY DANDY PRODUCTS, OR EQUAL.

ROCK CHECKS SHALL BE USED TO TRAP SEDIMENT TRAVELING ALONG DRAINAGE CHANNELS, ETC., STRAW BALES ARE NOT ACCEPTABLE.

ANY CONSTRUCTION ACCESS ROAD, ETC., THAT JOINS ANY PAVED DRIVEWAY OR ROAD SHALL HAVE A CRUSHED STONE ENTRANCE CREATED ACCORDING TO THE DRAWINGS AND THE KENTUCKY EROSION PREVENTION AND SEDIMENT CONTROL PLAN FIELD GUIDE.

STORM WATER RUNOFF FROM UNDISTURBED AREAS SHALL BE DIVERTED AROUND CONSTRUCTING SITES BY THE USE OF DIVERSION BERMS OR DIVERSION DITCHES.

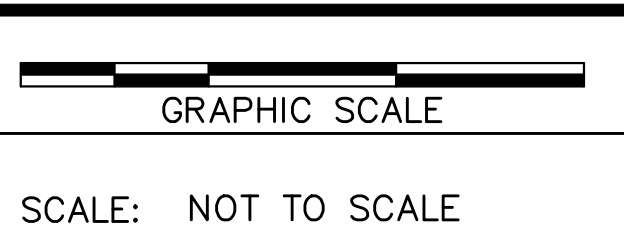
SILT FENCES SHALL BE USED TO TRAP SEDIMENT FROM SEDIMENT LADEN STORM WATER ROLLING DOWN HILLS, ETC., ACCORDING TO THE DRAWINGS AND THE KENTUCKY EROSION PREVENTION AND SEDIMENT CONTROL PLAN FIELD GUIDE.

A DETAILED EROSION CONTROL PLAN SHALL BE PREPARED BY THE CONTRACTOR AND SUBMITTED TO THE ENGINEER FOR REVIEW AND APPROVAL PRIOR TO STARTING ANY CONSTRUCTION ACTIVITIES.

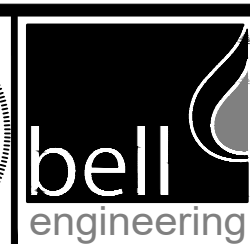
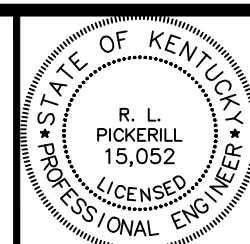
NOTE TO CONTRACTOR:

- CONTRACTOR TO MEET OR EXCEED THE NATIONWIDE PERMIT NO. 12 AS SHOWN IN DEC. 13, 1996 OR LATEST FEDERAL REGISTER, FINAL NOTICE OF ISSUANCE, REISSUANCE AND MODIFICATION OF NATIONWIDE PERMITS (61 FR 65874).
- CONTRACTOR TO MEET CURRENT REQUIREMENTS AS OUTLINED IN LATEST NOTICE OF INTENT (NOI) FOR STORM WATER DISCHARGE GENERAL REQUIREMENTS AS DESCRIBED BY: DEPARTMENT FOR ENVIRONMENTAL PROTECTION
14 RELLY ROAD
FRANKFORT, KENTUCKY
PH. (502)564-3410
- CONTRACTOR TO MEET/EXCEED 401 CLEAN WATER ACT GENERAL CERTIFICATION, NATIONWIDE PERMIT NO. 12, UTILITY LINE BACKFILL AND BEDDING AS OUTLINED BY THE KENTUCKY NATURAL RESOURCES AND ENVIRONMENTAL PROTECTION CABINET.
- CONTRACTOR TO MEET/EXCEED TEMPORARY SEEDING REQUIREMENTS OF DIVISION OF WATER WHICH REQUIRE ALL DISTURBED AREAS TO BE TEMPORARILY SEEDED WITHIN 14 DAYS AFTER CONSTRUCTION. FOR ADDITIONAL INFORMATION CONTACT:
DIVISION OF WATER
FRANKFORT, KENTUCKY

DESIGNER	MES	DATE	BY	REVISION
DRAWN	MES			
CHECKED	RLP			
APPROVED	RLP			



ALL RIGHTS RESERVED
THIS DOCUMENT IS THE PROPERTY OF BELL ENGINEERING AND SHALL NOT BE REPRODUCED IN WHOLE OR IN PART OR USED FOR CONSTRUCTION OF OTHER THAN THIS SPECIFIC PROJECT WITHOUT THE WRITTEN PERMISSION OF BELL ENGINEERING.



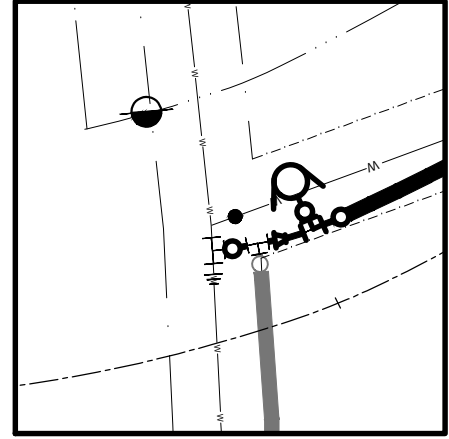
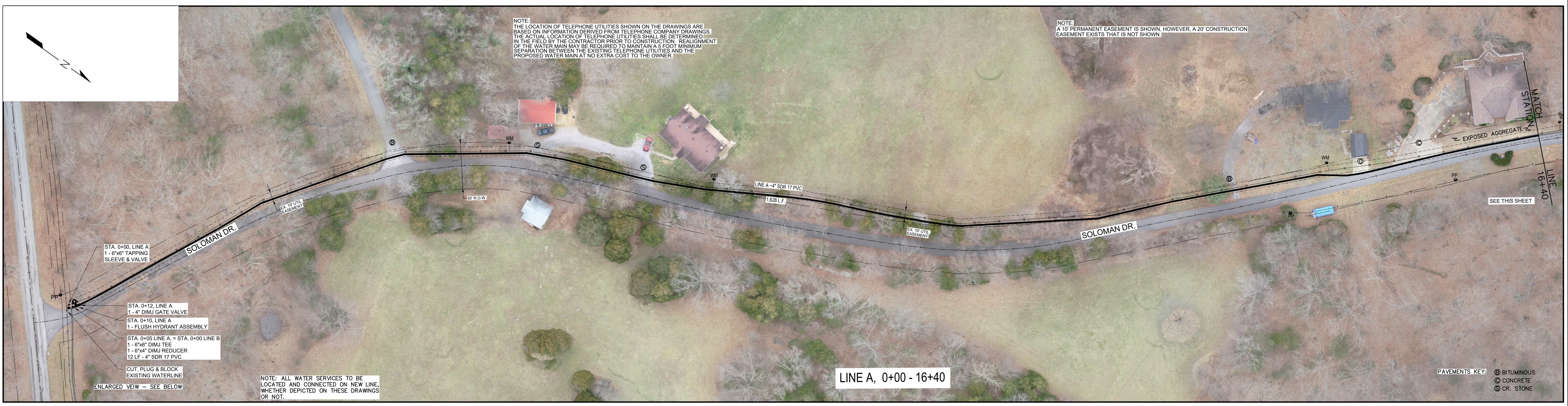
Lexington, KY (859) 278-5412
Hopkinsville, KY (270) 886-5466
Somerset, KY (606) 485-4011

LAKESIDE AREA WATERLINE REPLACEMENT
BARKLEY LAKE WATER DISTRICT
TRIGG COUNTY
KENTUCKY

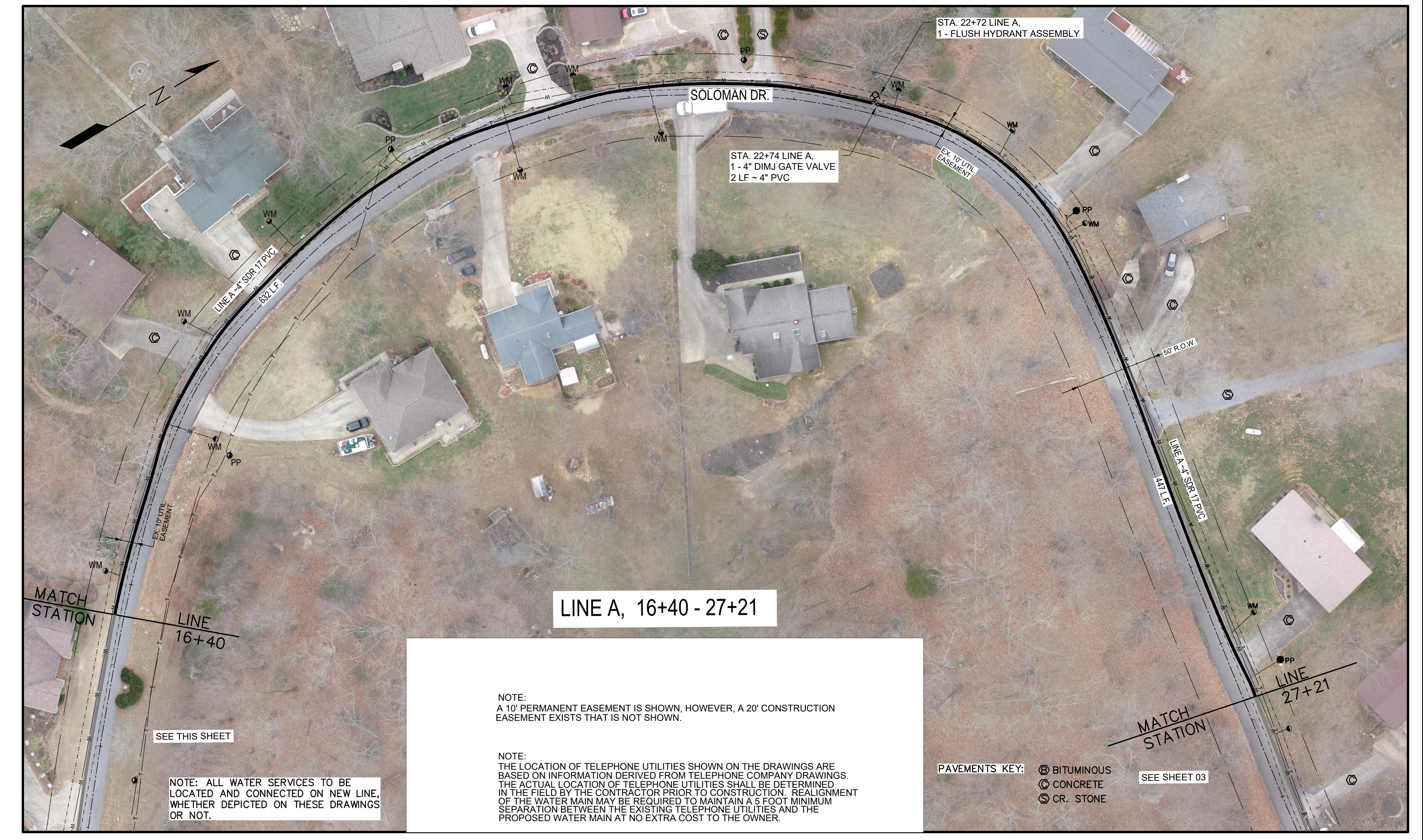
VICINITY MAP, LEGEND, GENERAL NOTES

DIVISION	ALL
CONTRACT NO.	586-24-01
DATE	JANUARY, 2024
SHEET NO.	01 OF 01

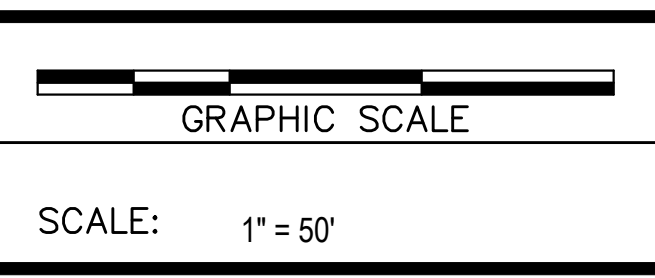
I:\PROJECTS\PROJECTS\586_Lakeside Area Waterline Replacement\Drawings\FINAL DRAWINGS\A-Draft\B-Soloman Dr\B-Soloman Dr.dwg - 23 Jan 2024 - 9:28am by mark
 PLOT: 5/16/24 000-BELL-STD.dwg



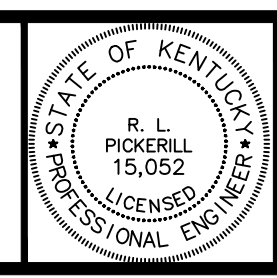
ENLARGED VIEW - STA. 0+00, LINE A



DESIGNER	MES	DATE	BY	REVISION
DRAWN	MES			
CHECKED	RLP			
APPROVED	RLP			



ALL RIGHTS RESERVED
 THIS DOCUMENT IS THE PROPERTY OF BELL ENGINEERING AND SHALL NOT BE REPRODUCED IN WHOLE OR IN PART OR USED FOR CONSTRUCTION OF OTHER THAN THIS SPECIFIC PROJECT WITHOUT THE WRITTEN PERMISSION OF BELL ENGINEERING.



bell
 engineering

Lexington, KY (859) 278-5412
 Hopkinsville, KY (270) 886-5466
 Somerset, KY (606) 485-4011

LAKESIDE AREA WATERLINE REPLACEMENT
 BARKLEY LAKE WATER DISTRICT
 TRIGG COUNTY, KENTUCKY

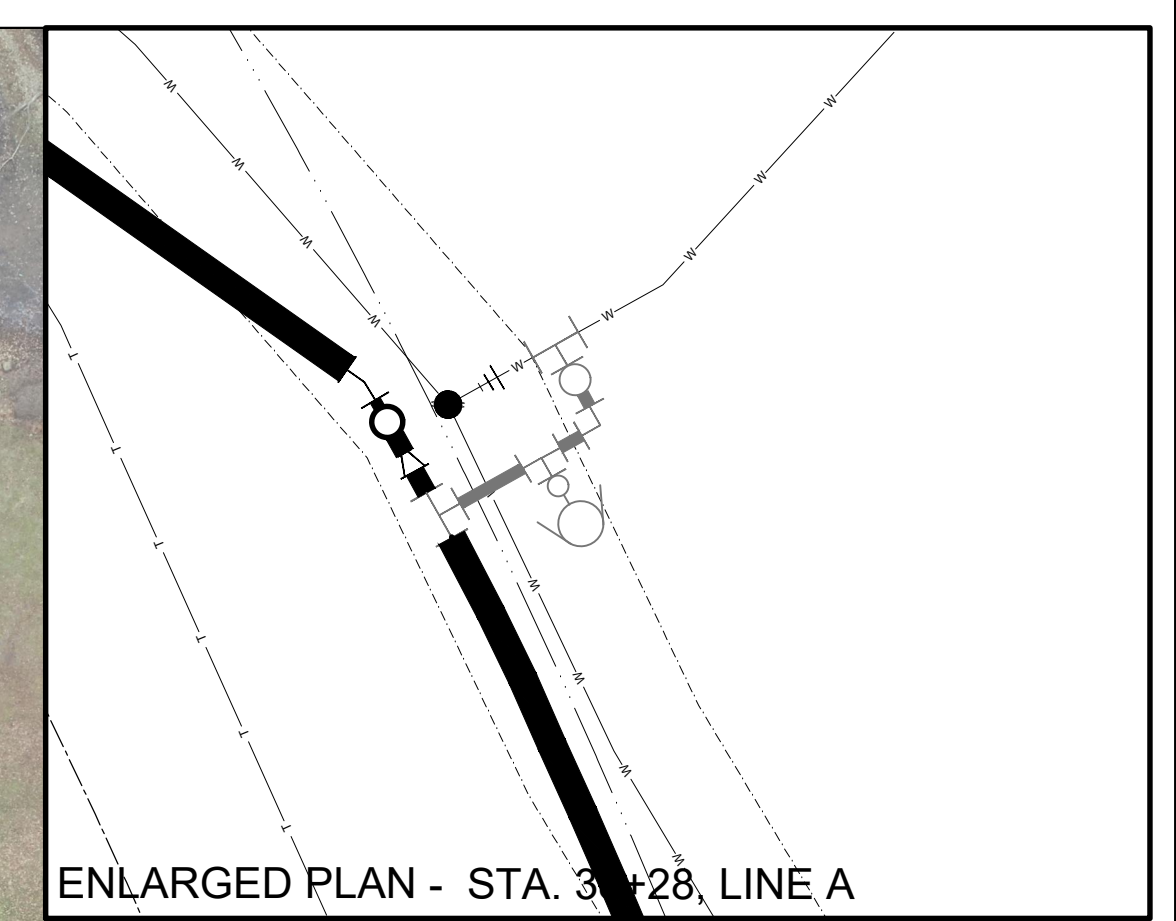
WATERLINE PLAN
 LINE A, 4" SDR 17 PVC -
 STA. 0+00 - STA. 27+21

DIVISION	A
CONTRACT NO.	586-24-01
DATE	JANUARY, 2024
SHEET NO.	01 OF 5



NOTE:
A 10' PERMANENT EASEMENT IS SHOWN, HOWEVER, A 20' CONSTRUCTION EASEMENT EXISTS THAT IS NOT SHOWN.

NOTE:
THE LOCATION OF TELEPHONE UTILITIES SHOWN ON THE DRAWINGS ARE BASED ON INFORMATION DERIVED FROM TELEPHONE COMPANY DRAWINGS. THE ACTUAL LOCATION OF TELEPHONE UTILITIES SHALL BE DETERMINED IN THE FIELD BY THE CONTRACTOR PRIOR TO CONSTRUCTION. REALIGNMENT OF THE WATER MAIN MAY BE REQUIRED TO MAINTAIN A 5 FOOT MINIMUM SEPARATION BETWEEN THE EXISTING TELEPHONE UTILITIES AND THE PROPOSED WATER MAIN AT NO EXTRA COST TO THE OWNER.



PAVEMENTS KEY:
 (B) BITUMINOUS
 (C) CONCRETE
 (S) CR. STONE

NOTE: ALL WATER SERVICES TO BE LOCATED AND CONNECTED ON NEW LINE, WHETHER DEPICTED ON THESE DRAWINGS OR NOT.

LINE A, 27+21 - 38+28 (END)

STA. 37+90, LINE A
1-4\"/>

32 LF - 4\"/>

STA. 38+22, LINE A
1-4\"/>

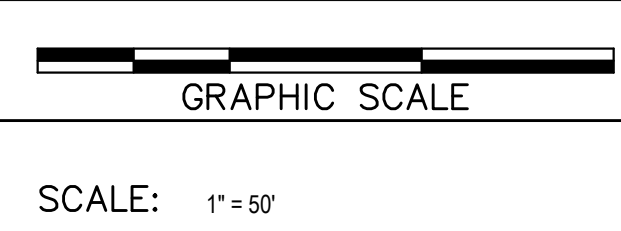
STA. 38+24, LINE A
1-4\"/>

STA. 38+28, LINE A= STA. 16+56 LINE B
1-6\"/>

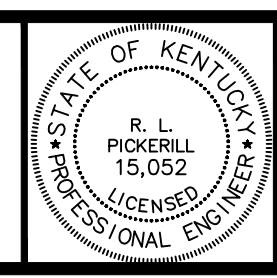
6 LF 4\"/>

SEE SHEET 03 FOR LINE B

DESIGNER	MES	DATE	BY	REVISION
DRAWN	MES			
CHECKED	RLP			
APPROVED	RLP			



ALL RIGHTS RESERVED
 THIS DOCUMENT IS THE PROPERTY OF BELL ENGINEERING AND SHALL NOT BE REPRODUCED IN WHOLE OR IN PART OR USED FOR CONSTRUCTION OF OTHER THAN THIS SPECIFIC PROJECT WITHOUT THE WRITTEN PERMISSION OF BELL ENGINEERING.



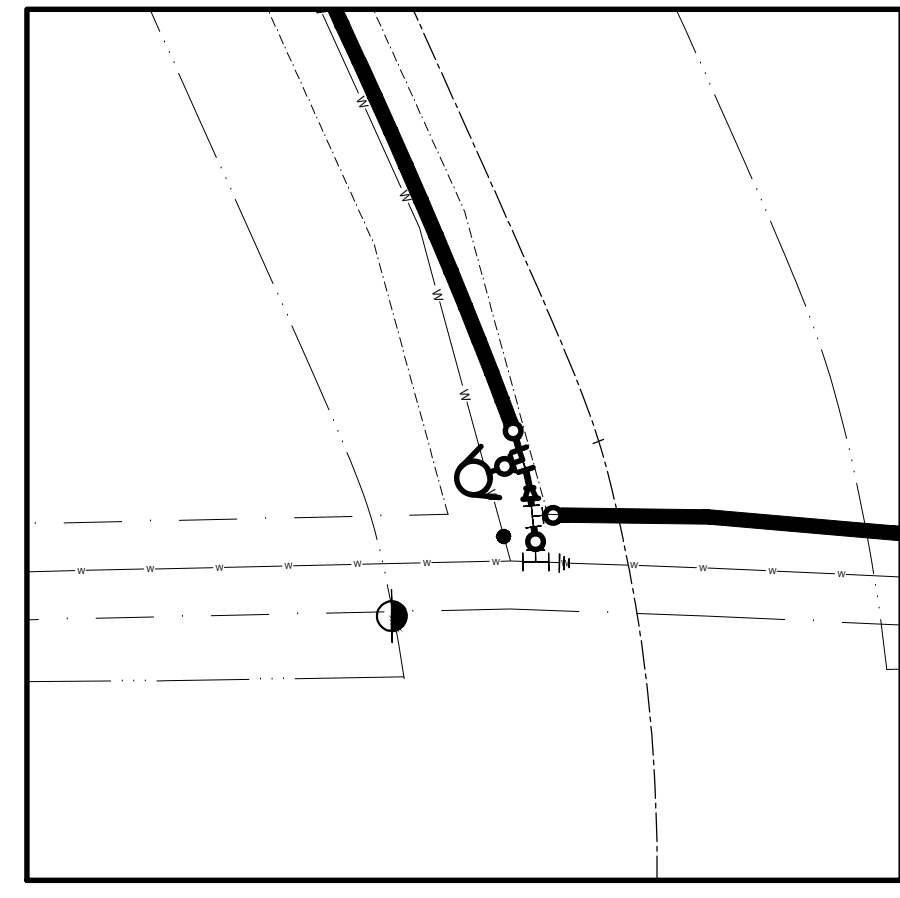
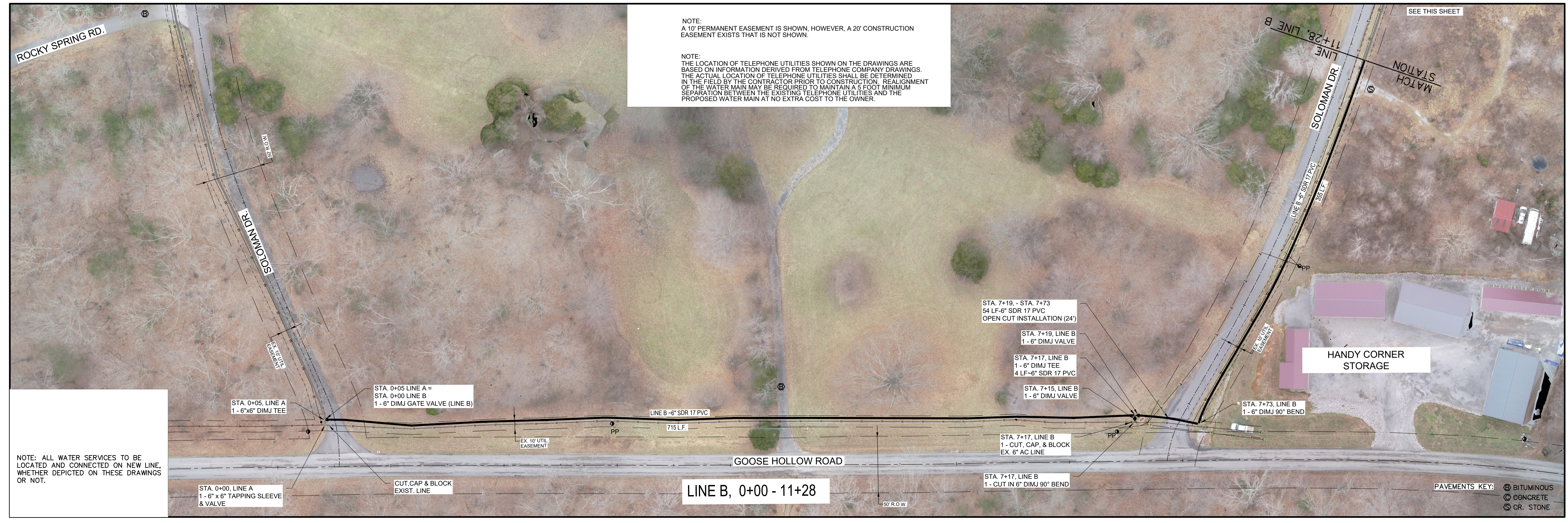
Lexington, KY (859) 278-5412
 Hopkinsville, KY (270) 886-5466
 Somerset, KY (606) 485-4011

LAKESIDE AREA WATERLINE REPLACEMENT
 BARKLEY LAKE WATER DISTRICT
 TRIGG COUNTY, KENTUCKY

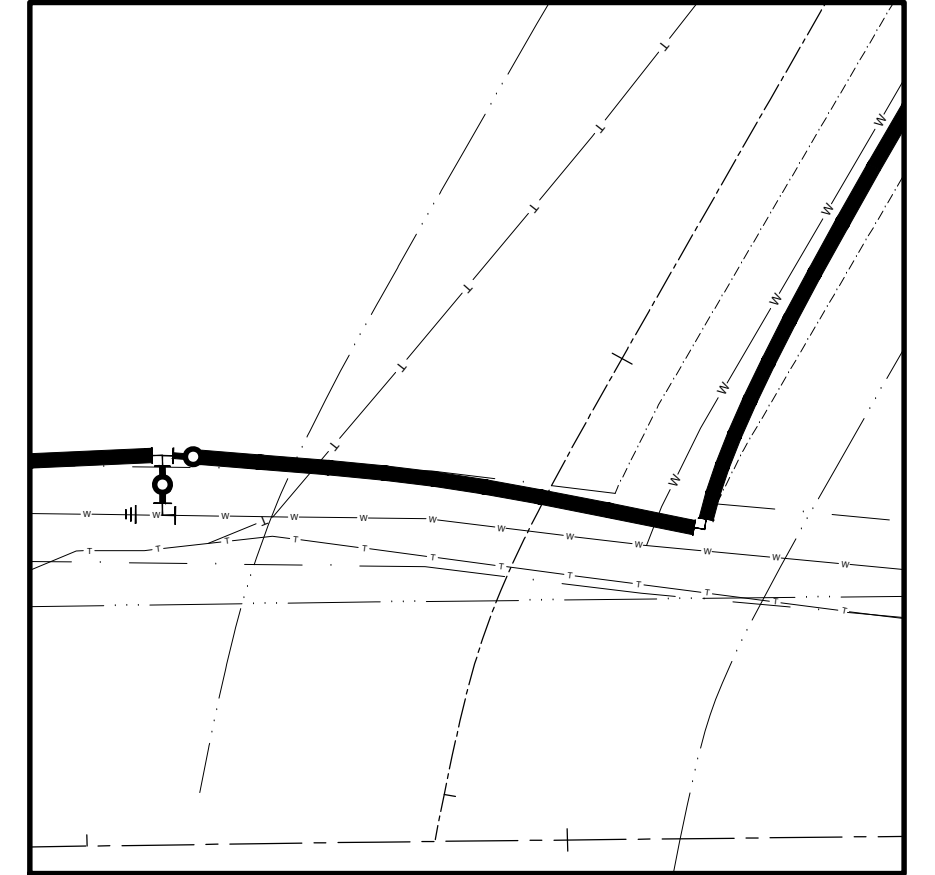
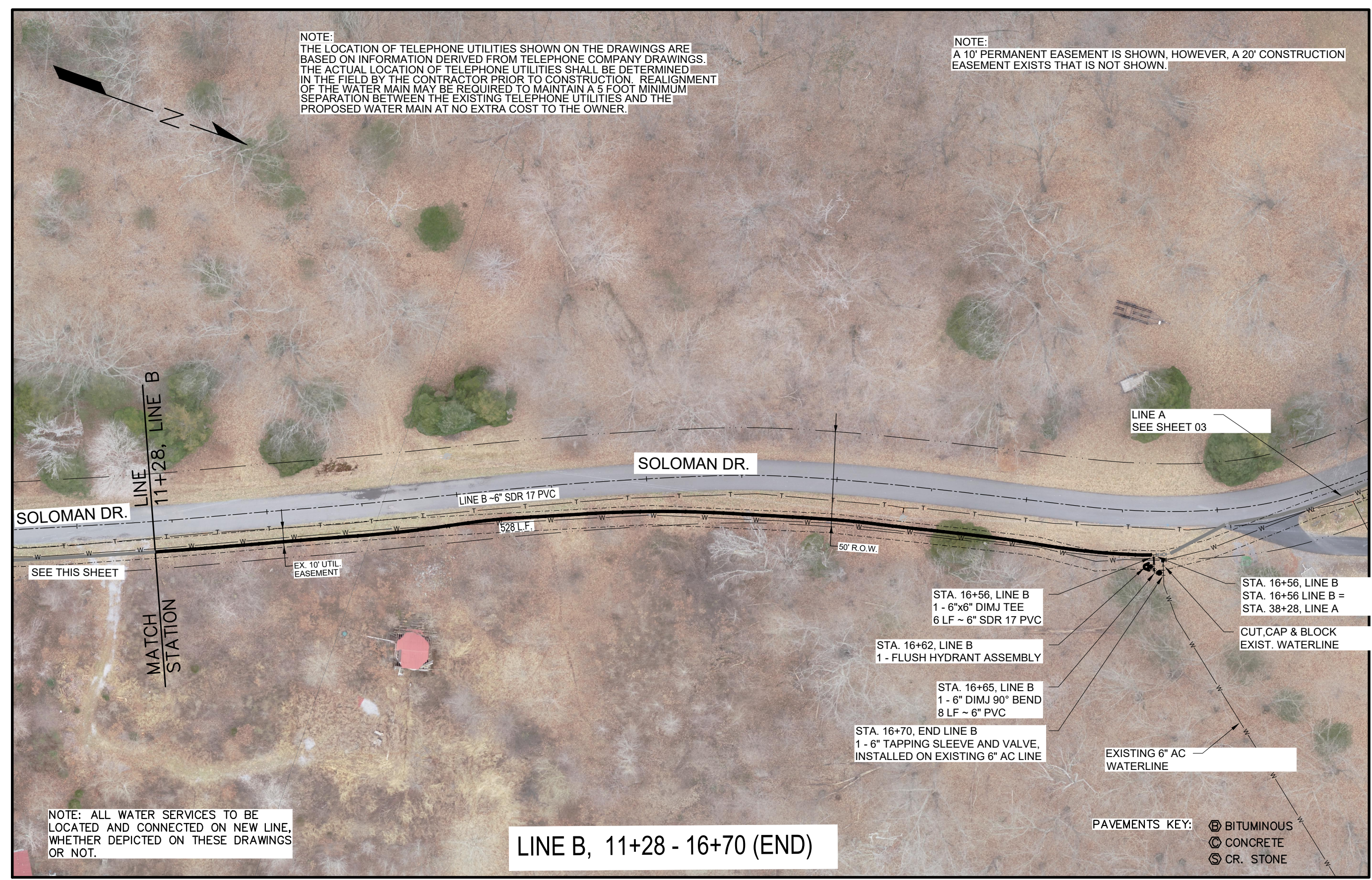
WATERLINE PLAN
 LINE A, 4\"/>

DIVISION	A
CONTRACT NO.	586-24-01
DATE	JANUARY, 2024
SHEET NO.	02 OF 5

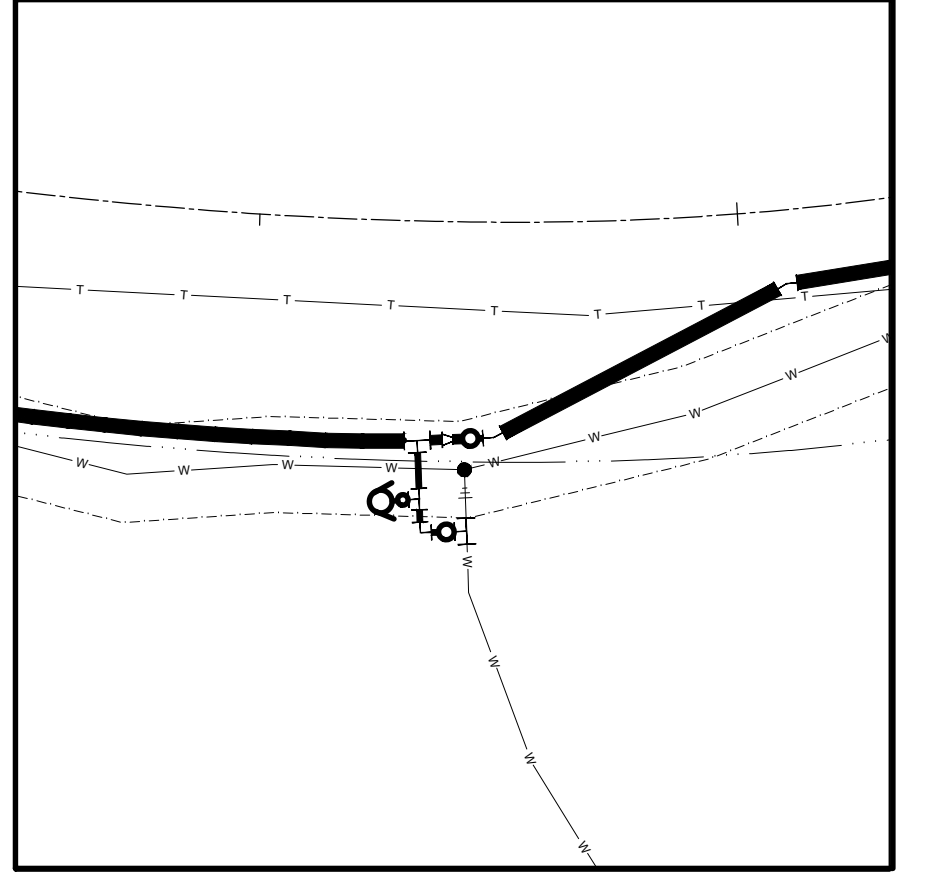
I:\PROJECTS\PROJECTS\586_Lake Area Waterline Replacement\Drawings\FINAL DRAWINGS\A-Draft\B-Soloman Dr. 03. W. Picked. 23. Jan. 2024 - 9. 30am. by mck
 File: 586_000-BELL-STD.dwg



ENLARGED VIEW STA. 0+00, LINE B

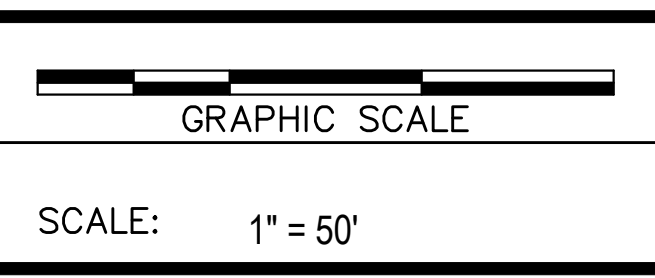


ENLARGED VIEW STA. 7+19, LINE B

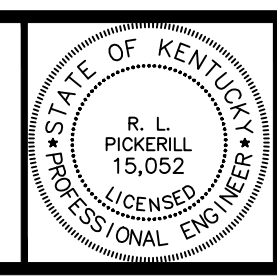


ENLARGED VIEW STA. 16+56, LINE B

DESIGNER	MES	DATE	BY	REVISION
DRAWN	MES			
CHECKED	RLP			
APPROVED	RLP			



ALL RIGHTS RESERVED
 THIS DOCUMENT IS THE PROPERTY OF BELL ENGINEERING AND SHALL NOT BE REPRODUCED IN WHOLE OR IN PART OR USED FOR CONSTRUCTION OF OTHER THAN THIS SPECIFIC PROJECT WITHOUT THE WRITTEN PERMISSION OF BELL ENGINEERING.



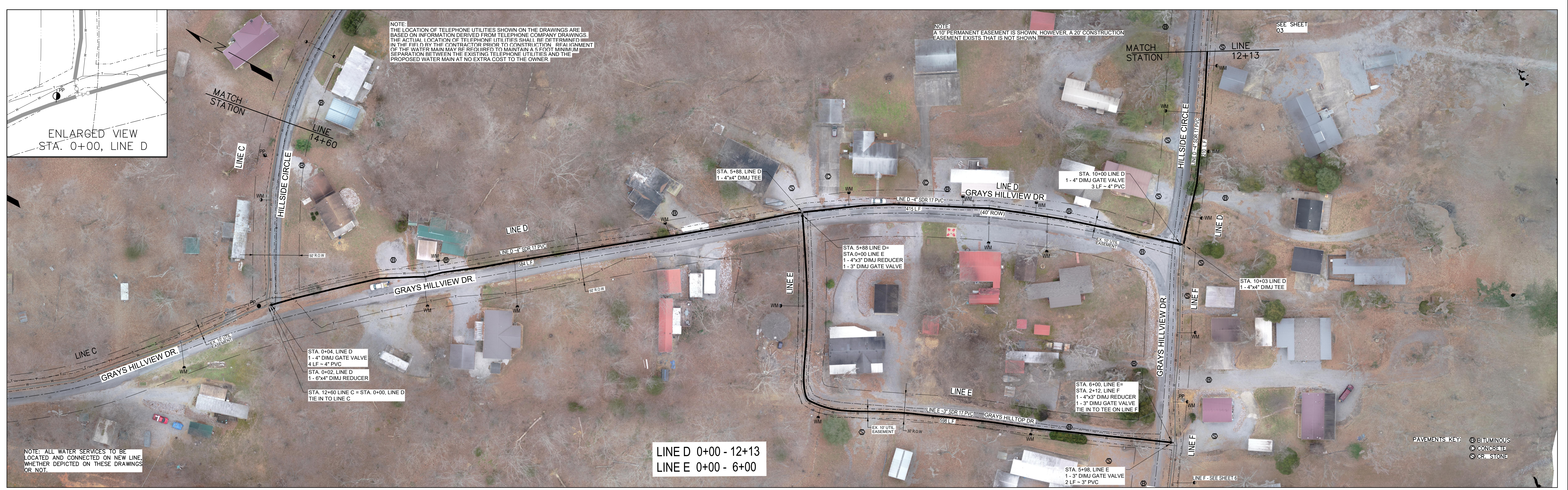
bell engineering
 Lexington, KY (859) 278-5412
 Hopkinsville, KY (270) 886-5466
 Somerset, KY (606) 485-4011

LAKESIDE AREA WATERLINE REPLACEMENT
 BARKLEY LAKE WATER DISTRICT
 TRIGG COUNTY, KENTUCKY

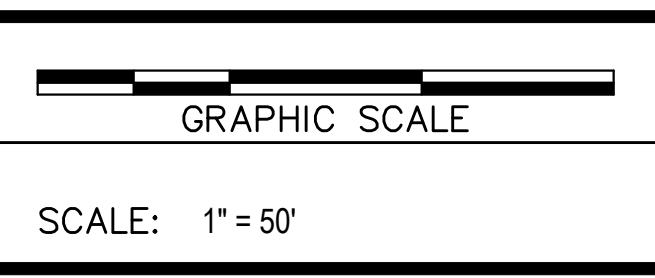
WATERLINE PLAN
 LINE B, 6" SDR 17 PVC
 STA. 0+00 - STA. 16+70

DIVISION	A
CONTRACT NO.	586-24-01
DATE	JANUARY, 2024
SHEET NO.	03 OF 5

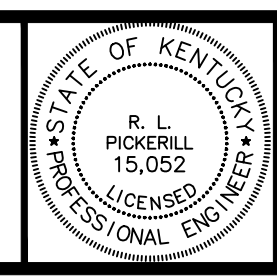
PROJECT: LAKESIDE AREA WATERLINE REPLACEMENT; DRAWING: WATERLINE PLAN; DATE: 23 JAN 2024; TIME: 09:33AM; BY: MES; PLOT: 04; SHEET: 04 OF 5



DESIGNER	MES	DATE	BY	REVISION
DRAWN	MES			
CHECKED	RLP			
APPROVED	RLP			



ALL RIGHTS RESERVED
 THIS DOCUMENT IS THE PROPERTY OF BELL ENGINEERING AND SHALL NOT BE REPRODUCED IN WHOLE OR IN PART OR USED FOR CONSTRUCTION OF OTHER THAN THIS SPECIFIC PROJECT WITHOUT THE WRITTEN PERMISSION OF BELL ENGINEERING.



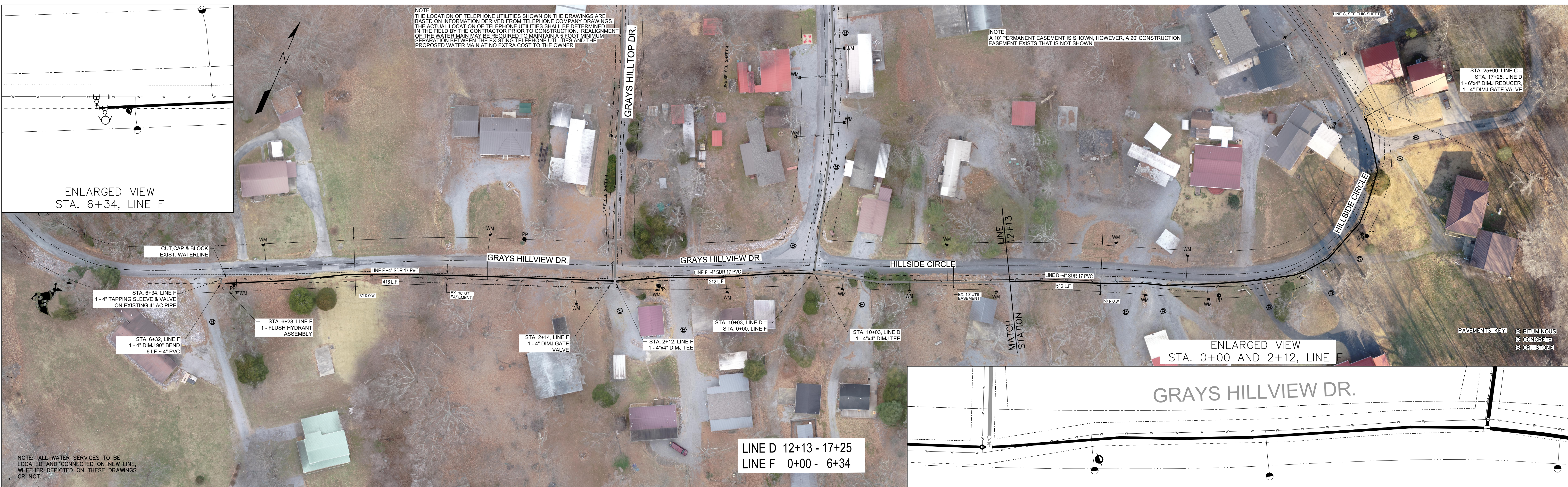
bell engineering
 Lexington, KY (859) 278-5412
 Hopkinsville, KY (270) 886-5466
 Somerset, KY (606) 485-4011

LAKESIDE AREA WATERLINE REPLACEMENT
 BARKLEY LAKE WATER DISTRICT
 TRIGG COUNTY, KENTUCKY

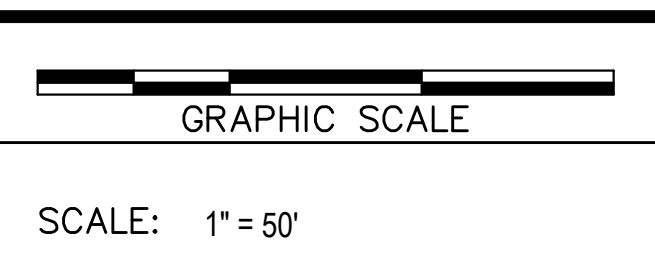
WATERLINE PLAN	
LINE C - 6" SDR 17 PVC, STA. 0+00 - 14+60	
LINE D - 4" SDR 17 PVC, STA. 0+00 - 12+13	
LINE E - 3" SDR 17 PVC, STA. 0+00 - 6+00	

DIVISION	A
CONTRACT NO.	586-24-01
DATE	JANUARY, 2024
SHEET NO.	04 OF 5

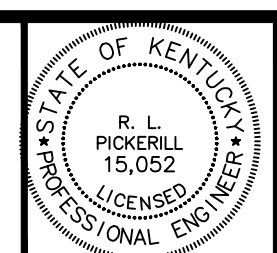
PROJECTS\PROJECTS\586 Lake Barkley, MO, DOT, Lakeside Area Waterline Replacement\Drawings\FINAL DRAWINGS\A-Draft\GraysShade.dwg - SHT 05 Printed: Tue, 23 Jan 2024 - 8:34am by mark



DESIGNER	MES	DATE	BY	REVISION
DRAWN	MES			
CHECKED	RLP			
APPROVED	RLP			



ALL RIGHTS RESERVED
 THIS DOCUMENT IS THE PROPERTY OF BELL ENGINEERING AND SHALL NOT BE REPRODUCED IN WHOLE OR IN PART OR USED FOR CONSTRUCTION OF OTHER THAN THIS SPECIFIC PROJECT WITHOUT THE WRITTEN PERMISSION OF BELL ENGINEERING.



bell engineering
 Lexington, KY (859) 278-5412
 Hopkinsville, KY (270) 886-5466
 Somerset, KY (606) 485-4011

LAKESIDE AREA WATERLINE REPLACEMENT
 BARKLEY LAKE WATER DISTRICT
 TRIGG COUNTY, KENTUCKY

WATERLINE PLAN
 LINE C-6" SDR 17 PVC, STA. 14+60-STA.25+10 (END)
 LINE D-4" SDR 17 PVC, STA. 12+13 - 17+25 (END)
 LINE F-4" SDR 17 PVC, STA. 0+00 - 6+34

DIVISION	A
CONTRACT NO.	586-24-01
DATE	JANUARY, 2024
SHEET NO.	05 OF 5