

SYSTEM DESCRIPTION	
TOTAL CAPACITY @ POI (AC)	120.00 MW
SOLAR NAMEPLATE CAPACITY (AC)	127.60 MVA
SOLAR CAPACITY (DC)	150.60 MW
DC:AC RATIO @ POI	1.25
AC COLLECTION SYSTEM VOLTAGE	34,500 kV
DC SYSTEM VOLTAGE	1,500 V
TOTAL MODULES	237,162
MODULES PER STRING	29
AVERAGE STRINGS PER INVERTER	282
TOTAL INVERTERS	29

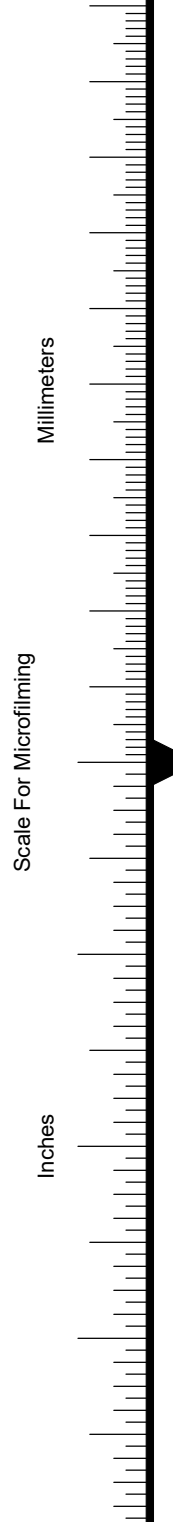
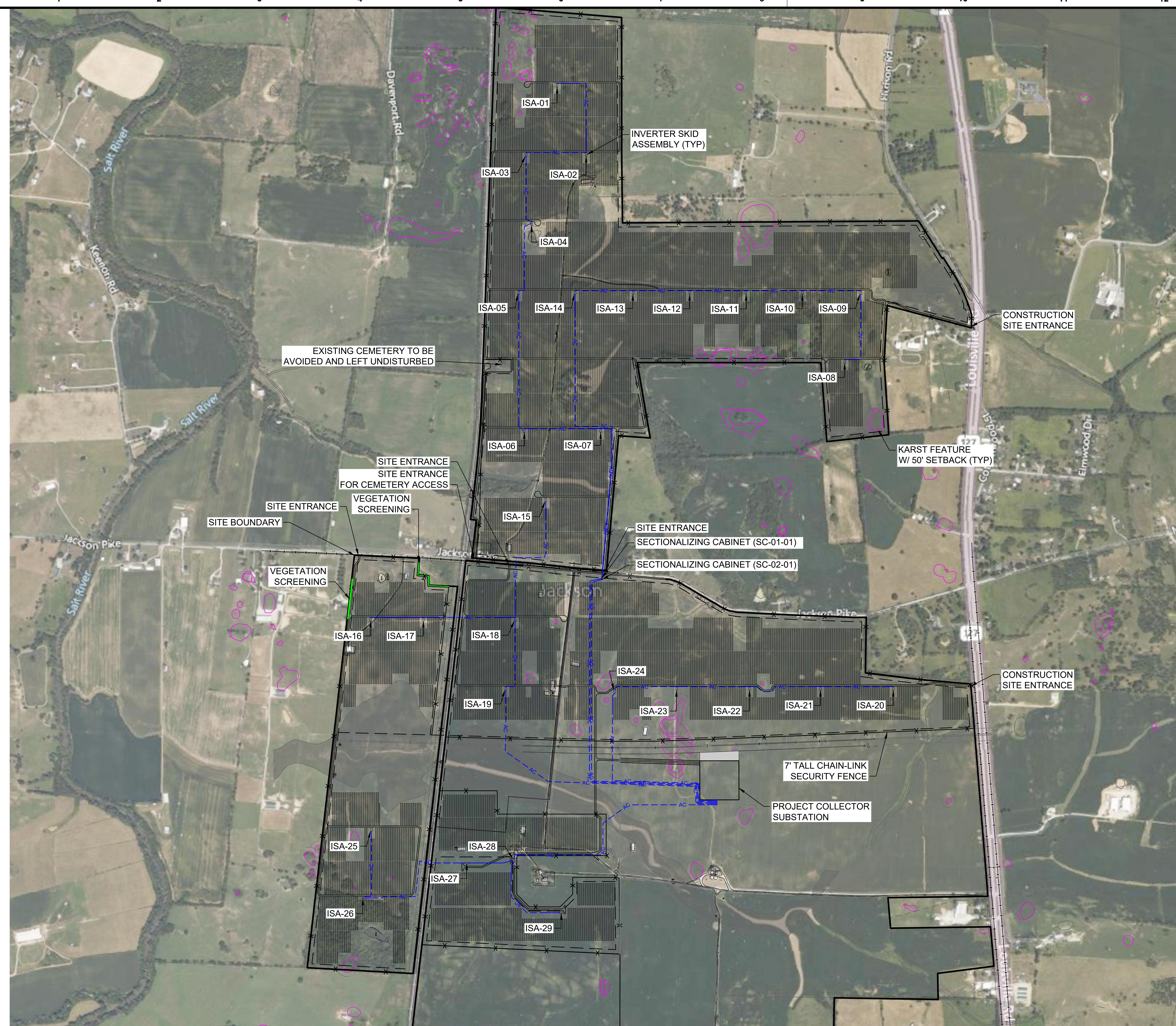
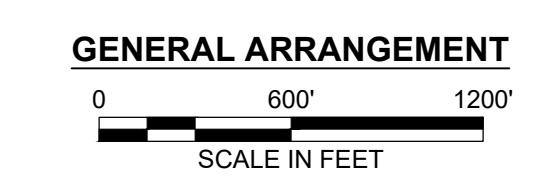
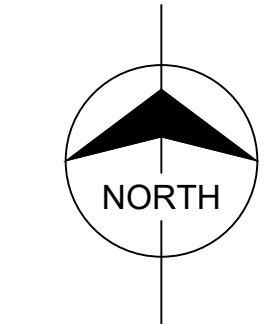
DESIGN PARAMETERS	
GROUND COVER RATIO	36%
RACKING	SINGLE AXIS TRACKER
ROW TO ROW SPACING	21.73'
PV AREA	834 ACRES
SETBACKS	50' MIN. FROM SITE BOUNDARY 50' MIN. FROM STREAMS/WETLANDS 50' MIN. FROM RIGHTS-OF-WAY 50' MIN. FROM KARST FEATURES 150' FROM RESIDENCES

MODULE PARAMETERS	
MANUFACTURER	CANADIAN SOLAR
MODEL	CSTN-635MB-AG
BIN CLASS	635 W

INVERTER PARAMETERS	
MANUFACTURER	SUNGROW
MODEL	SG4400UD-MV-20
RATING	4,400 kVA

- NOTE:**
- THIS DRAWING IS CONCEPTUAL IN NATURE AND FOR PLANNING PURPOSES ONLY.
 - THIS DRAWING REPRESENTS ONE PROPOSED LAYOUT AND IS SUBJECT TO CHANGE BASED ON DETAILED DESIGN, AS WELL AS ACTUAL SITE CONDITIONS.
 - THIS DRAWING DOES NOT CONSIDER FEDERAL, STATE, OR OTHER LOCAL DEVELOPMENT REGULATION, WHICH MAY IMPACT THE PROPOSED LAYOUT.
 - THE PROPOSED LAYOUT IS BASED ON AERIAL IMAGE AND IS SUBJECT TO CHANGE BASED ON BOUNDARY SURVEY (ALTA).
 - THE SITE LAYOUT DOES NOT TAKE INTO CONSIDERATION THE FLOOD ZONE, TRANSMISSION EASEMENTS OR OTHER EASEMENTS.
 - TREE CLEARING FOR BATS NEED PRIOR NOTIFICATION TO LKE/EA AND SHOULD BE AVOIDED DURING JUNE/JULY IF POSSIBLE.

PRELIMINARY - NOT FOR CONSTRUCTION



no.	date	by	ckd	description	no.	date	by	ckd	description
D	05/07/24	PSD	SH	ISSUED FOR REVIEW					
C	05/02/24	PSD	SH	ISSUED FOR REVIEW					
B	05/01/24	PSD	SH	ISSUED FOR REVIEW					
A	04/05/24	PSD	SH	ISSUED FOR REVIEW					

BURNS MCDONNELL
 9400 WARD PARKWAY
 KANSAS CITY, MO 64114
 816-333-9400
 Burns & McDonnell Engineering Co, Inc.
 Firm Reg. No. 43

designed: S. HIBBARD
 detailed: P. DURKEE

LGE KU

MERCER COUNTY, KY

MERCER COUNTY SOLAR FACILITY
 GENERAL ARRANGEMENT
 HIGHER GCR

project: 157644 contract: -
 drawing: EP100 - rev. D
 sheet: - of - sheets
 file: 157644EP100-HGCR.dwg