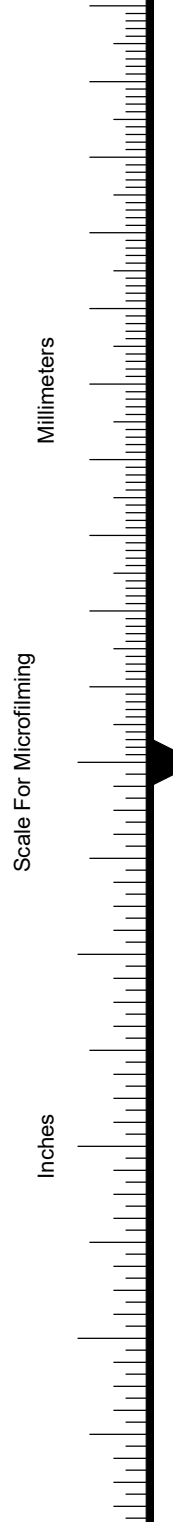
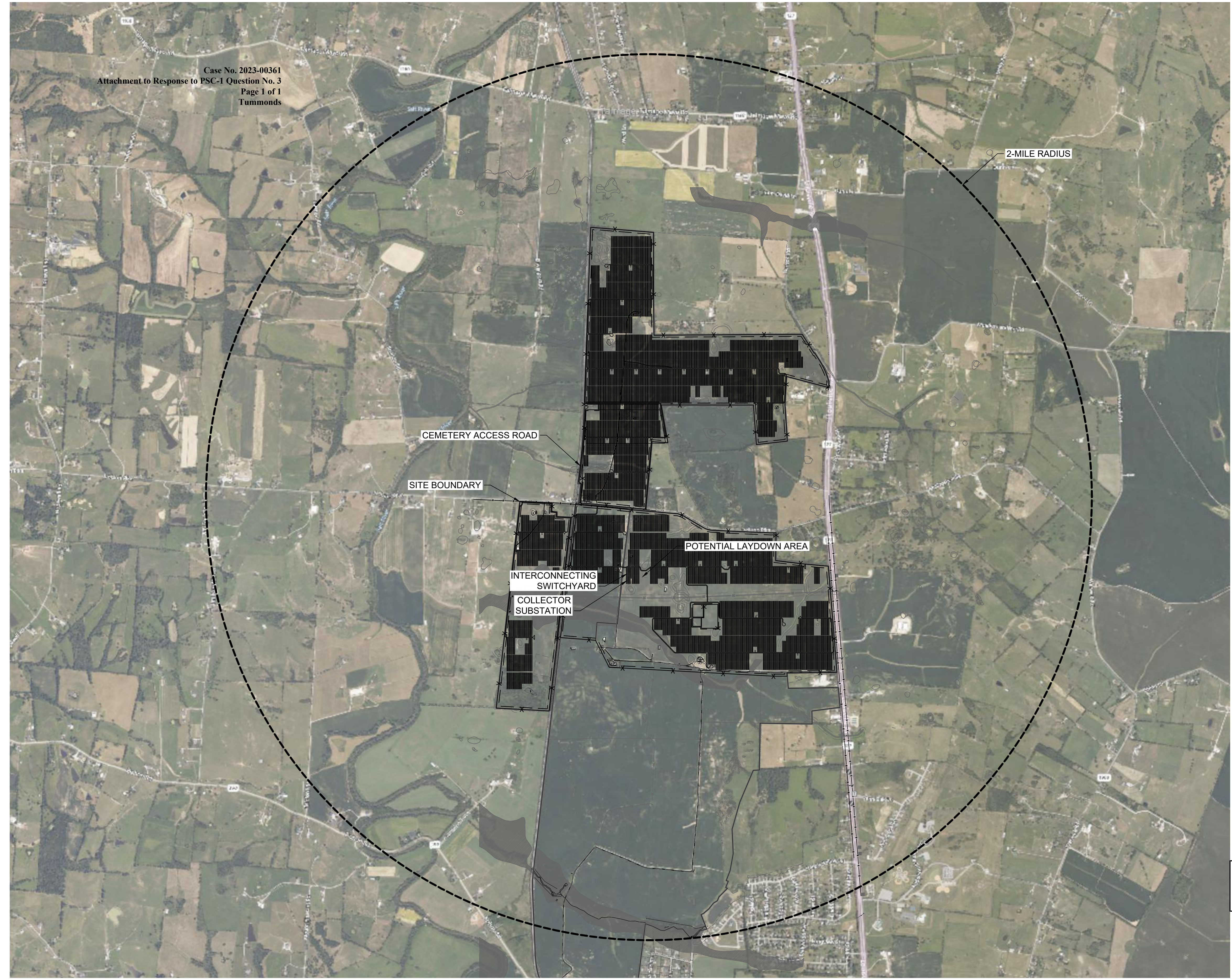


Case No. 2023-00361
 Attachment to Response to PSC-1 Question No. 3
 Page 1 of 1
 Tummonds



SYSTEM DESCRIPTION	
TOTAL CAPACITY @ POI (AC)	120.00 MW
SOLAR NAMEPLATE CAPACITY (AC)	132.00 MVA
SOLAR CAPACITY (DC)	153.91 MW
DC:AC RATIO @ POI	1.287
AC COLLECTION SYSTEM VOLTAGE	1.283
DC SYSTEM VOLTAGE	1,500 V
TOTAL MODULES	242,382
MODULES PER STRING	29
AVERAGE STRINGS PER INVERTER	278
TOTAL INVERTERS	30

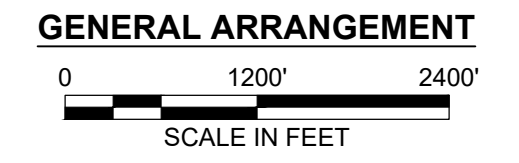
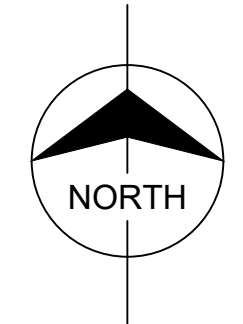
DESIGN PARAMETERS	
GROUND COVER RATIO	34% & 35%
RACKING	SINGLE AXIS TRACKER
ROW TO ROW SPACING	34% = 23.00'; 35% = 22.35'
PV AREA	595 ACRES
SETBACKS	50' MIN. FROM SITE BOUNDARY 50' MIN. FROM STREAMS/WETLANDS 20' MIN. FROM RIGHTS-OF-WAY 50' MIN. FROM SINK HOLES

MODULE PARAMETERS	
MANUFACTURER	CANADIAN SOLAR
MODEL	CS7N-635MB-AG
BIN CLASS	635 W

INVERTER PARAMETERS	
MANUFACTURER	SUNGROW
MODEL	SG4400UD-MV-20
RATING	4,400 KVA

- NOTE:**
- THIS DRAWING IS CONCEPTUAL IN NATURE AND FOR PLANNING PURPOSES ONLY.
 - THIS DRAWING REPRESENTS ONE PROPOSED LAYOUT AND IS SUBJECT TO CHANGE BASED ON DETAILED DESIGN, AS WELL AS ACTUAL SITE CONDITIONS.
 - THIS DRAWING DOES NOT CONSIDER FEDERAL, STATE, OR OTHER LOCAL DEVELOPMENT REGULATION, WHICH MAY IMPACT THE PROPOSED LAYOUT.
 - THE PROPOSED LAYOUT IS BASED ON AERIAL IMAGE AND IS SUBJECT TO CHANGE BASED ON BOUNDARY SURVEY (ALTA).
 - THE SITE LAYOUT DOES NOT TAKE INTO CONSIDERATION THE FLOOD ZONE, TRANSMISSION EASEMENTS OR OTHER EASEMENTS.
 - TREE CLEARING FOR BATS NEED PRIOR NOTIFICATION TO LKE/EA AND SHOULD BE AVOIDED DURING JUNE/JULY IF POSSIBLE.

PRELIMINARY - NOT FOR CONSTRUCTION



no.	date	by	ckd	description	no.	date	by	ckd	description
B	01/18/24	PSD	SH	ISSUED FOR REVIEW	H	12/01/23	PSD	SH	ISSUED FOR REVIEW
					G	10/27/23	VDT	PSD	ISSUED FOR REVIEW
A	01/15/24	PSD	SH	ISSUED FOR REVIEW	F	08/17/23	VDT	PSD	ISSUED FOR REVIEW

BURNS MCDONNELL
 9400 WARD PARKWAY
 KANSAS CITY, MO 64114
 816-333-9400
 Burns & McDonnell Engineering Co, Inc.
 Firm Reg. No. 43

designed: S. HIBBARD
 detailed: P. DURKEE



MERCER COUNTY, KY

MERCER COUNTY SOLAR FACILITY
 GENERAL ARRANGEMENT

project	contract
157644	-
drawing	rev.
EP101	- B
sheet -	of -
file 157644EP101-2Mile.dwg	sheets