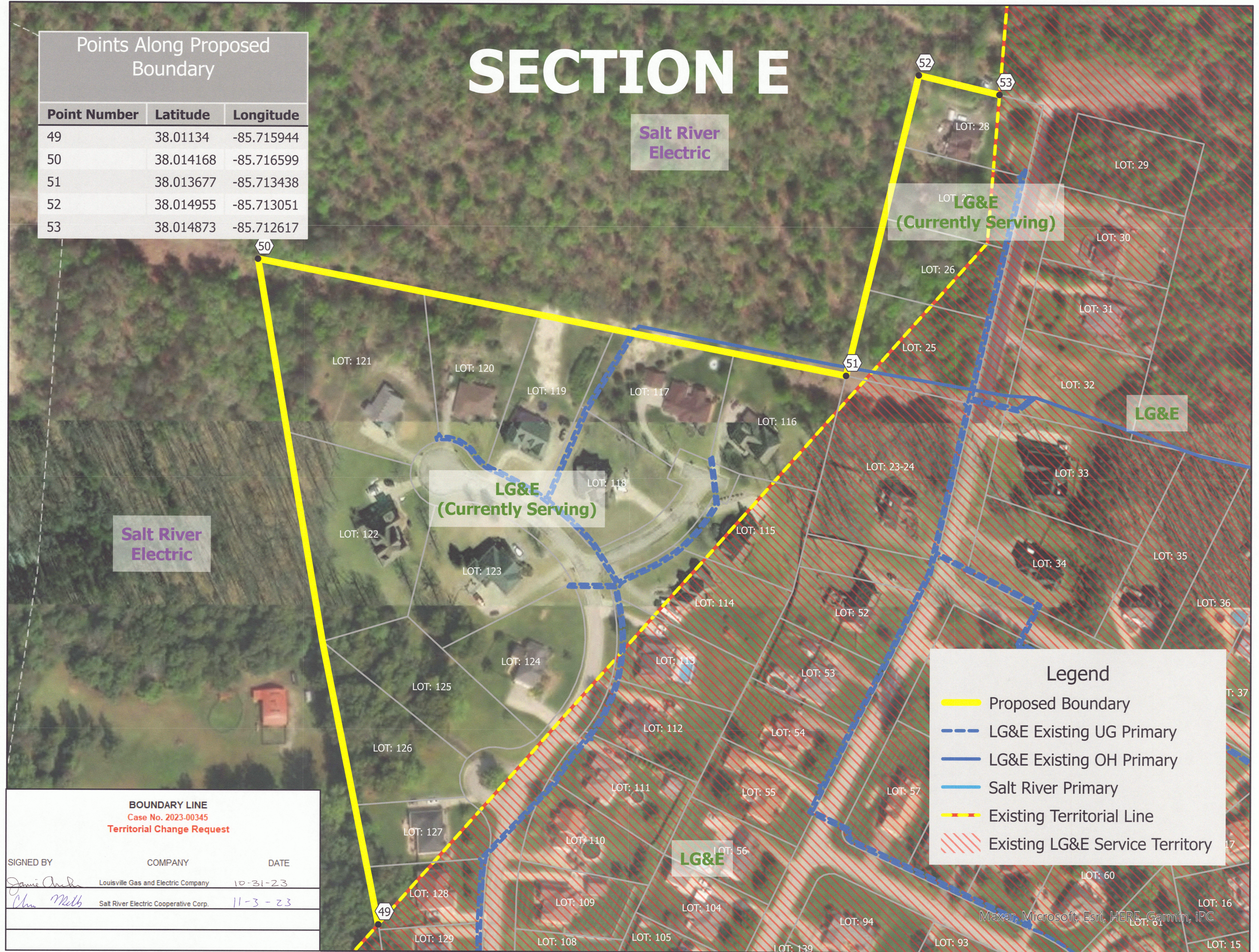


SECTION E

Points Along Proposed Boundary

Point Number	Latitude	Longitude
49	38.01134	-85.715944
50	38.014168	-85.716599
51	38.013677	-85.713438
52	38.014955	-85.713051
53	38.014873	-85.712617



Legend	
	Proposed Boundary
	LG&E Existing UG Primary
	LG&E Existing OH Primary
	Salt River Primary
	Existing Territorial Line
	Existing LG&E Service Territory

BOUNDARY LINE
Case No. 2023-00345
Territorial Change Request

SIGNED BY	COMPANY	DATE
<i>Jamie Anderson</i>	Louisville Gas and Electric Company	10-31-23
<i>Chris Melby</i>	Salt River Electric Cooperative Corp.	11-3-23