

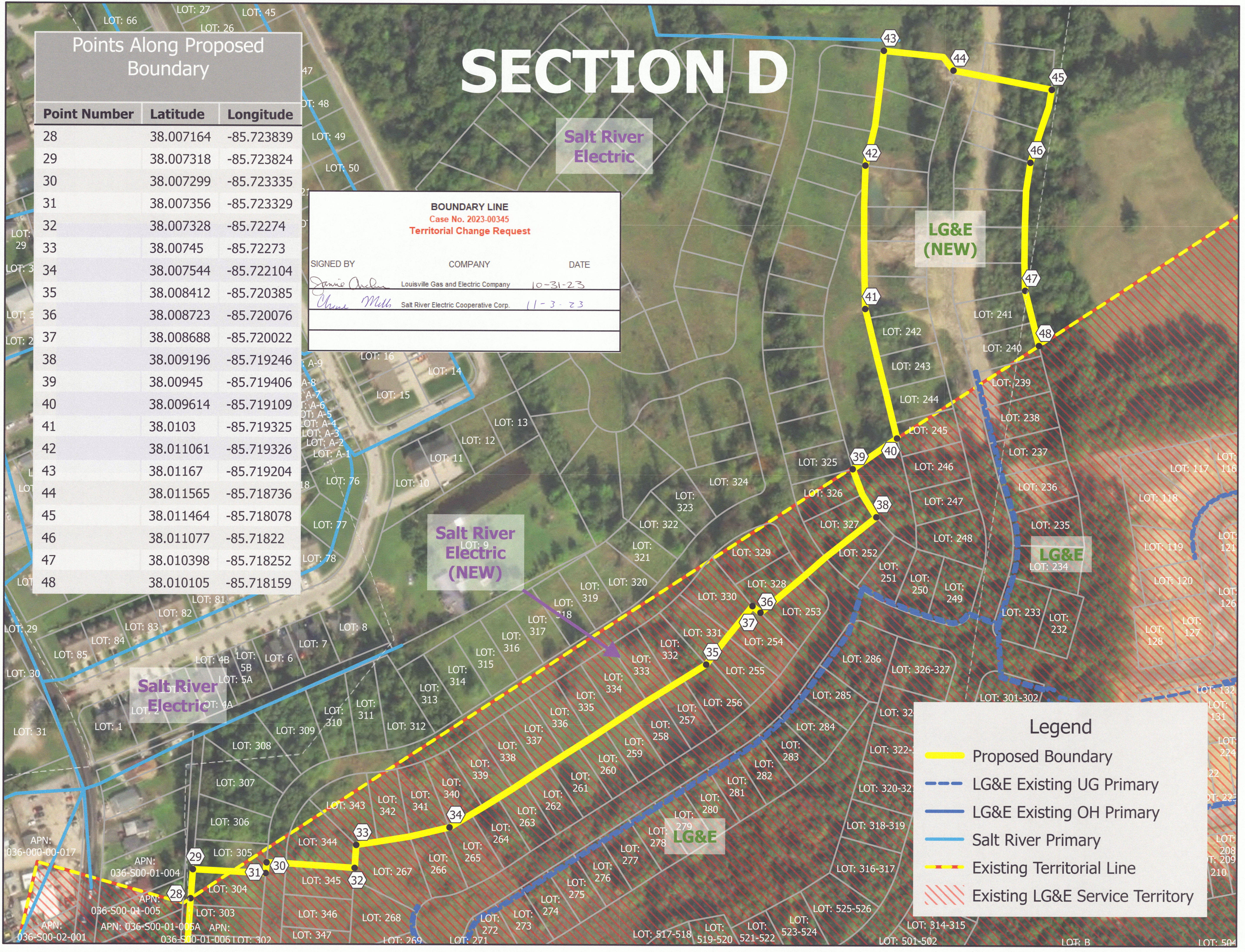
SECTION D

Points Along Proposed Boundary

Point Number	Latitude	Longitude
28	38.007164	-85.723839
29	38.007318	-85.723824
30	38.007299	-85.723335
31	38.007356	-85.723329
32	38.007328	-85.72274
33	38.00745	-85.72273
34	38.007544	-85.722104
35	38.008412	-85.720385
36	38.008723	-85.720076
37	38.008688	-85.720022
38	38.009196	-85.719246
39	38.00945	-85.719406
40	38.009614	-85.719109
41	38.0103	-85.719325
42	38.011061	-85.719326
43	38.01167	-85.719204
44	38.011565	-85.718736
45	38.011464	-85.718078
46	38.011077	-85.71822
47	38.010398	-85.718252
48	38.010105	-85.718159

BOUNDARY LINE
Case No. 2023-00345
Territorial Change Request

SIGNED BY	COMPANY	DATE
<i>Jennie Archer</i>	Louisville Gas and Electric Company	10-31-23
<i>Chase Mills</i>	Salt River Electric Cooperative Corp.	11-3-23



Salt River Electric

LG&E (NEW)

Salt River Electric (NEW)

LG&E

LG&E

Legend

- Proposed Boundary
- LG&E Existing UG Primary
- LG&E Existing OH Primary
- Salt River Primary
- Existing Territorial Line
- Existing LG&E Service Territory