

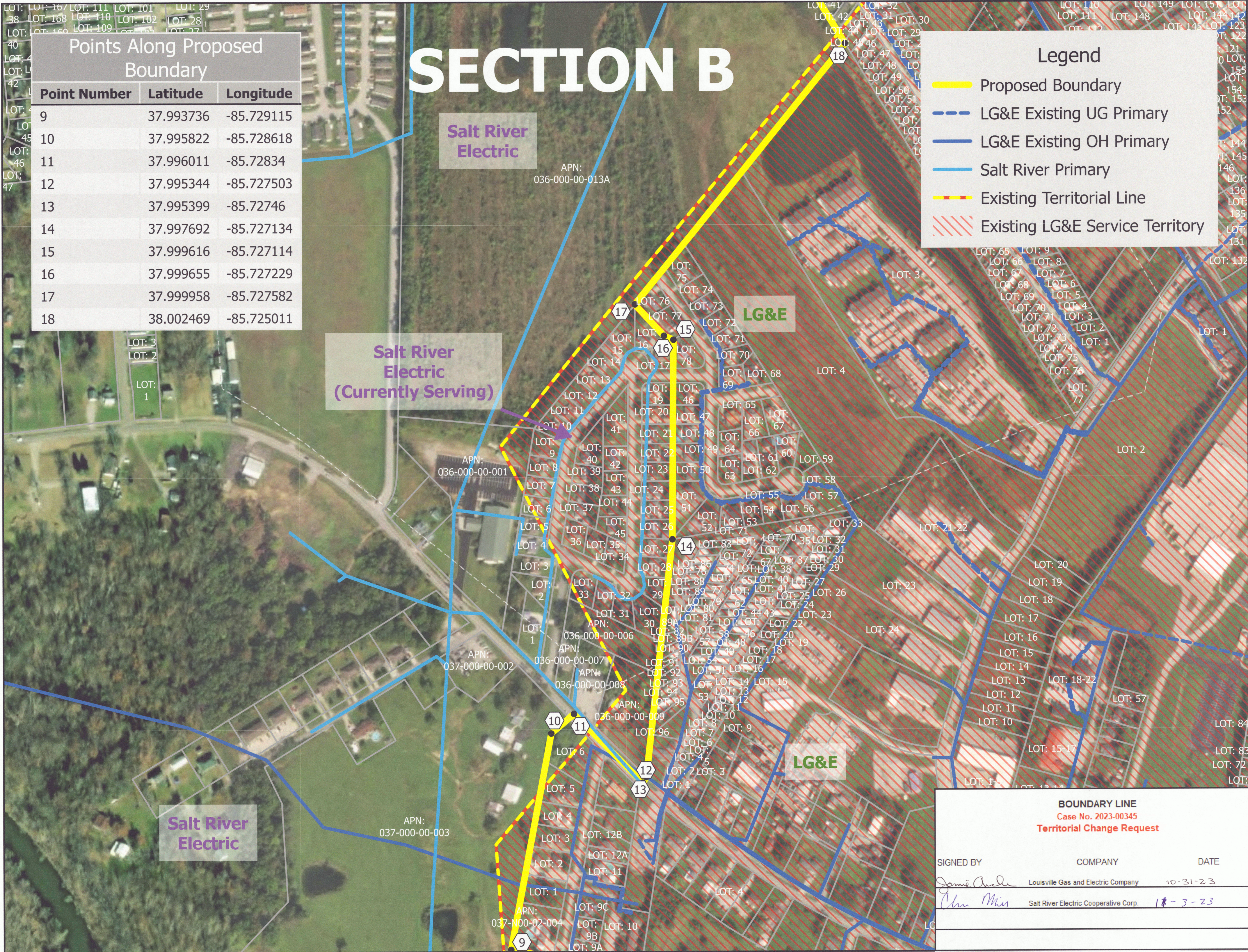
# SECTION B

Points Along Proposed Boundary

Point Number	Latitude	Longitude
9	37.993736	-85.729115
10	37.995822	-85.728618
11	37.996011	-85.72834
12	37.995344	-85.727503
13	37.995399	-85.72746
14	37.997692	-85.727134
15	37.999616	-85.727114
16	37.999655	-85.727229
17	37.999958	-85.727582
18	38.002469	-85.725011

**Legend**

- Proposed Boundary
- LG&E Existing UG Primary
- LG&E Existing OH Primary
- Salt River Primary
- Existing Territorial Line
- Existing LG&E Service Territory



**BOUNDARY LINE**  
Case No. 2023-00345  
**Territorial Change Request**

SIGNED BY	COMPANY	DATE
<i>Jamie Ansel</i>	Louisville Gas and Electric Company	10-31-23
<i>Cher Min</i>	Salt River Electric Cooperative Corp.	11-3-23