



MATCH LINE - SEE SHEET 1-P-23

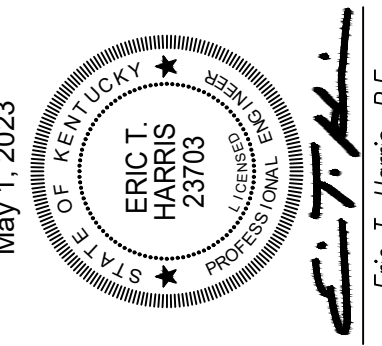
WATER LINE PLAN: STATION 54+00 TO 60+70

**ENVIRONMENTAL NOTE:**  
 THE CONTRACTOR SHALL BE RESPONSIBLE FOR CUTTING, REMOVING AND DISPOSING OF TREES, BRUSH, STUMPS, ROOTS, AND WEEDS WITHIN THE CONSTRUCTION AREA AS REQUIRED FOR CONSTRUCTION OF THE PIPELINE. AVOID CUTTING OF, OR DAMAGE TO MATURE TREES (DBH>5"), AND TREES NOT IN THE CONSTRUCTION AREA. MATURE TREES MAY ONLY BE REMOVED DURING THE PERIOD BETWEEN AUGUST 1ST TO MAY 31ST. THE CONTRACTOR WILL BE RESPONSIBLE FOR THE REPLACEMENT OF TREES, SHRUBS, ETC. UNNECESSARILY DAMAGED OR REMOVED. IF BAT OR OTHER ENDANGERED SPECIES ARE ENCOUNTERED, PROMPTLY CONTACT USF&W.

**BASEMAP & SCALE NOTE:**  
 THE LOCATIONS OF EXISTING TOPOGRAPHIC FEATURES AND UTILITIES ARE APPROXIMATE. THE CONTRACTOR SHALL FAMILIARIZE HIMSELF WITH THE PROJECT SITE PRIOR TO CONSTRUCTION. UNDER NO CIRCUMSTANCES SHALL THE CONTRACTOR ASSUME THAT ALL FEATURES ARE IDENTIFIED AND INDICATED IN THEIR EXACT LOCATION. THE CONTRACTOR SHALL CONTACT KENTUCKY 811 OR TENNESSEE 811, AS WELL AS OTHER UTILITIES, PIPELINE COMPANIES, ETC. POTENTIALLY HAVING UNDERGROUND LINES, UTILITIES, STRUCTURES, ETC., IN THE AREA FOR VERIFICATION AND LOCATION PRIOR TO EXCAVATION.

PROPOSED WATER LINE	—————	PROPERTY LINE	—————
EXISTING WATER LINE (OTHERS)	— — — — —	EXISTING MANHOLE	○ MH
BURIED ELECTRIC SERVICE	— E — E — E —	RESIDENTIAL WATER METER	⊞
EXISTING SEWER LINE	— S — S — S —	PHONE PEDESTAL	⊞
EXISTING GAS MAIN	— GAS — GAS —	POWER/TELEPHONE POLE	• P/T
		GUY WIRE	⊞
		VALVE	⊞
		FIRE HYDRANT	⊞ FH

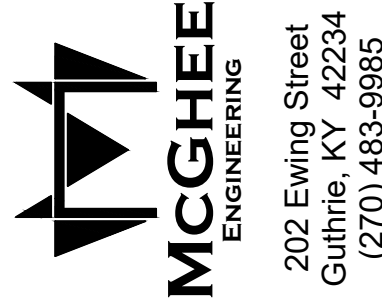
**LEGEND**



DRAWING NO.  
SHEET 1-P-24

Christian County Water District  
 Phase IX - Water System Upgrade  
 Pruitt Lane Waterline Plan

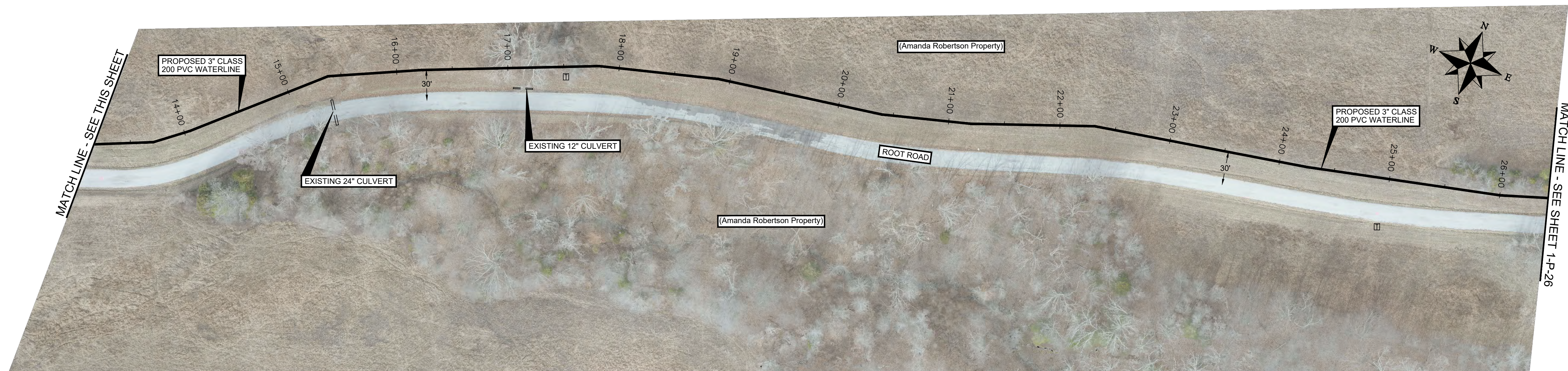
FIRM: McGhee Engineering  
 DES BY: ETH CHK BY: CWW  
 DWN BY: WAC APP BY:  
 SCALE: 1" = 50'  
 PROJECT DATE:  
 PRINTED:  
 LENGTH OF BAR IS 1"  
 ON ORIGINAL DRAWING



NO.	FOR	DATE	BY
1	FOR KCOV REVIEW	05-01-23	ETH
2	REVISION		BoP
REVISIONS			



WATER LINE PLAN: STATION 0+00 TO 13+20



WATER LINE PLAN: STATION 13+20 TO 26+43

**ENVIRONMENTAL NOTE:**  
 THE CONTRACTOR SHALL BE RESPONSIBLE FOR CUTTING, REMOVING AND DISPOSING OF TREES, BRUSH, STUMPS, ROOTS, AND WEEDS WITHIN THE CONSTRUCTION AREA AS REQUIRED FOR CONSTRUCTION OF THE PIPELINE. AVOID CUTTING OF, OR DAMAGE TO MATURE TREES (DBH>5"), AND TREES NOT IN THE CONSTRUCTION AREA. MATURE TREES MAY ONLY BE REMOVED DURING THE PERIOD BETWEEN AUGUST 1ST TO MAY 31ST. THE CONTRACTOR WILL BE RESPONSIBLE FOR THE REPLACEMENT OF TREES, SHRUBS, ETC. UNNECESSARILY DAMAGED OR REMOVED. IF BAT OR OTHER ENDANGERED SPECIES ARE ENCOUNTERED, PROMPTLY CONTACT USF&W.

**BASEMAP & SCALE NOTE:**  
 THE LOCATIONS OF EXISTING TOPOGRAPHIC FEATURES AND UTILITIES ARE APPROXIMATE. THE CONTRACTOR SHALL FAMILIARIZE HIMSELF WITH THE PROJECT SITE PRIOR TO CONSTRUCTION. UNDER NO CIRCUMSTANCES SHALL THE CONTRACTOR ASSUME THAT ALL FEATURES ARE IDENTIFIED AND INDICATED IN THEIR EXACT LOCATION. THE CONTRACTOR SHALL CONTACT 'KENTUCKY 811' OR 'TENNESSEE 811', AS WELL AS OTHER UTILITIES, PIPELINE COMPANIES, ETC. POTENTIALLY HAVING UNDERGROUND LINES, UTILITIES, STRUCTURES, ETC., IN THE AREA FOR VERIFICATION AND LOCATION PRIOR TO EXCAVATION.

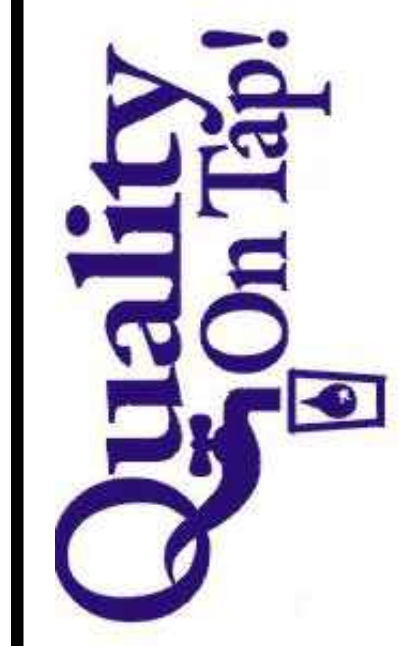
LEGEND			
PROPOSED WATER LINE	—————	PROPERTY LINE	-----
EXISTING WATER LINE (OTHERS)	— — — — —	EXISTING MANHOLE	○ MH
BURIED ELECTRIC SERVICE	— E — E — E —	RESIDENTIAL WATER METER	⊞
EXISTING SEWER LINE	— S — S — S —	PHONE PEDESTAL	⊞
EXISTING GAS MAIN	— GAS — GAS —	POWER/TELEPHONE POLE	• P/T
		GUY WIRE	⊞
		VALVE	⊞
		FIRE HYDRANT	⊞ FH

NO.	REVISION	DATE	BY
1	FOR KNOW REVIEW	05-01-23	ETH
2	REVISION	05-01-23	ETH

**MC GHEE**  
 ENGINEERING  
 202 Ewing Street  
 Guthrie, KY 42234  
 (270) 483-9985

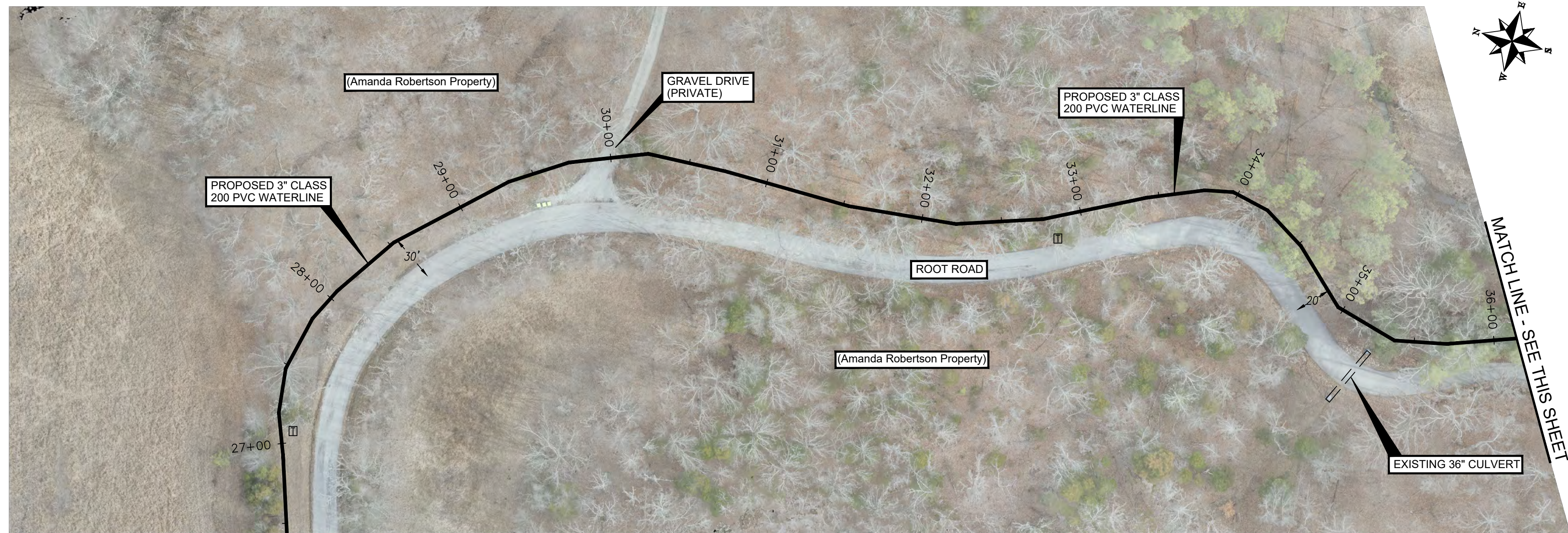
FIRM: Mcghee Engineering  
 DES BY: ETH    CHK BY: CWW  
 DWN BY: WAC    APP BY:  
 SCALE: 1" = 50'  
 PROJECT DATE:  
 PRINTED:  
 LENGTH OF BAR IS 1" ON ORIGINAL DRAWING

Christian County Water District  
 Phase IX - Water System Upgrade  
 Root Road Waterline Plan



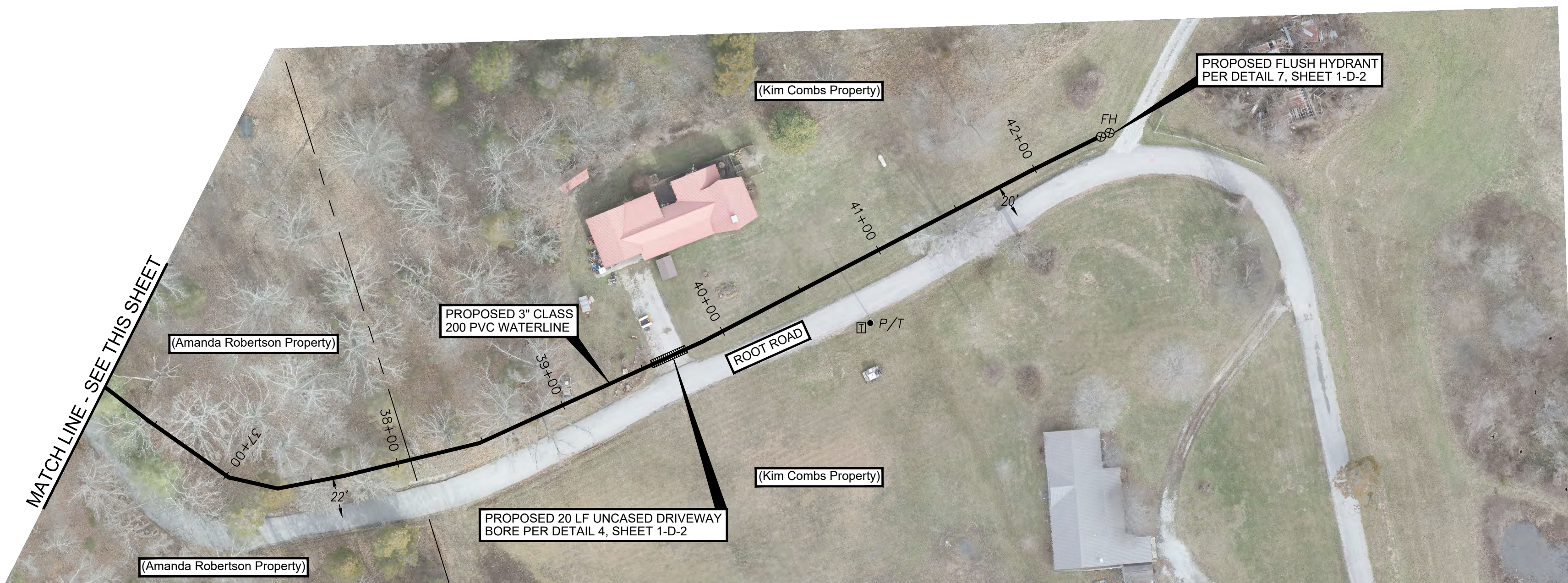
May 1, 2023  
 OF KENTUCKY  
 ERIC T. HARRIS  
 23703  
 PROFESSIONAL ENGINEER  
 Eric T. Harris, P.E.

DRAWING NO.  
 SHEET 1-P-25



MATCH LINE - SEE SHEET 1-P-25

WATER LINE PLAN: STATION 26+43 TO 36+15



MATCH LINE - SEE THIS SHEET

WATER LINE PLAN: STATION 36+15 TO 42+40

**ENVIRONMENTAL NOTE:**

THE CONTRACTOR SHALL BE RESPONSIBLE FOR CUTTING, REMOVING AND DISPOSING OF TREES, BRUSH, STUMPS, ROOTS, AND WEEDS WITHIN THE CONSTRUCTION AREA AS REQUIRED FOR CONSTRUCTION OF THE PIPELINE. AVOID CUTTING OF, OR DAMAGE TO MATURE TREES (DBH>5"), AND TREES NOT IN THE CONSTRUCTION AREA. MATURE TREES MAY ONLY BE REMOVED DURING THE PERIOD BETWEEN AUGUST 1ST TO MAY 31ST. THE CONTRACTOR WILL BE RESPONSIBLE FOR THE REPLACEMENT OF TREES, SHRUBS, ETC. UNNECESSARILY DAMAGED OR REMOVED. IF BAT OR OTHER ENDANGERED SPECIES ARE ENCOUNTERED, PROMPTLY CONTACT USF&W.

**BASEMAP & SCALE NOTE:**

THE LOCATIONS OF EXISTING TOPOGRAPHIC FEATURES AND UTILITIES ARE APPROXIMATE. THE CONTRACTOR SHALL FAMILIARIZE HIMSELF WITH THE PROJECT SITE PRIOR TO CONSTRUCTION. UNDER NO CIRCUMSTANCES SHALL THE CONTRACTOR ASSUME THAT ALL FEATURES ARE IDENTIFIED AND INDICATED IN THEIR EXACT LOCATION. THE CONTRACTOR SHALL CONTACT KENTUCKY 811 OR TENNESSEE 811, AS WELL AS OTHER UTILITIES, PIPELINE COMPANIES, ETC. POTENTIALLY HAVING UNDERGROUND LINES, UTILITIES, STRUCTURES, ETC., IN THE AREA FOR VERIFICATION AND LOCATION PRIOR TO EXCAVATION.

LEGEND			
PROPOSED WATER LINE	—————	PROPERTY LINE	-----
EXISTING WATER LINE (OTHERS)	— — — — —	EXISTING MANHOLE	○ MH
BURIED ELECTRIC SERVICE	— E — E — E —	RESIDENTIAL WATER METER	⊞
EXISTING SEWER LINE	— S — S — S —	PHONE PEDESTAL	⊞
EXISTING GAS MAIN	— GAS — GAS —	POWER/TELEPHONE POLE	• P/T
		GUY WIRE	⊞
		VALVE	⊞
		FIRE HYDRANT	⊞ FH

NO.	REVISIONS
1	FOR KCOV REVIEW
2	05-01-23 ETH
3	05/01/23
4	05/01/23

**McGHEE ENGINEERING**  
 202 Ewing Street  
 Guthrie, KY 42234  
 (270) 483-9985

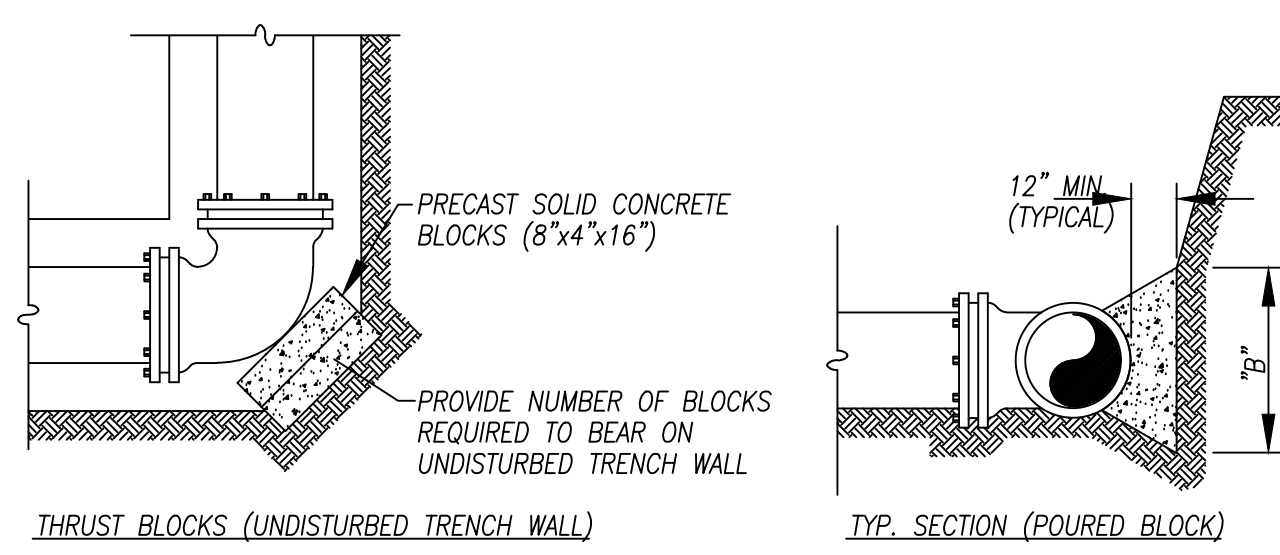
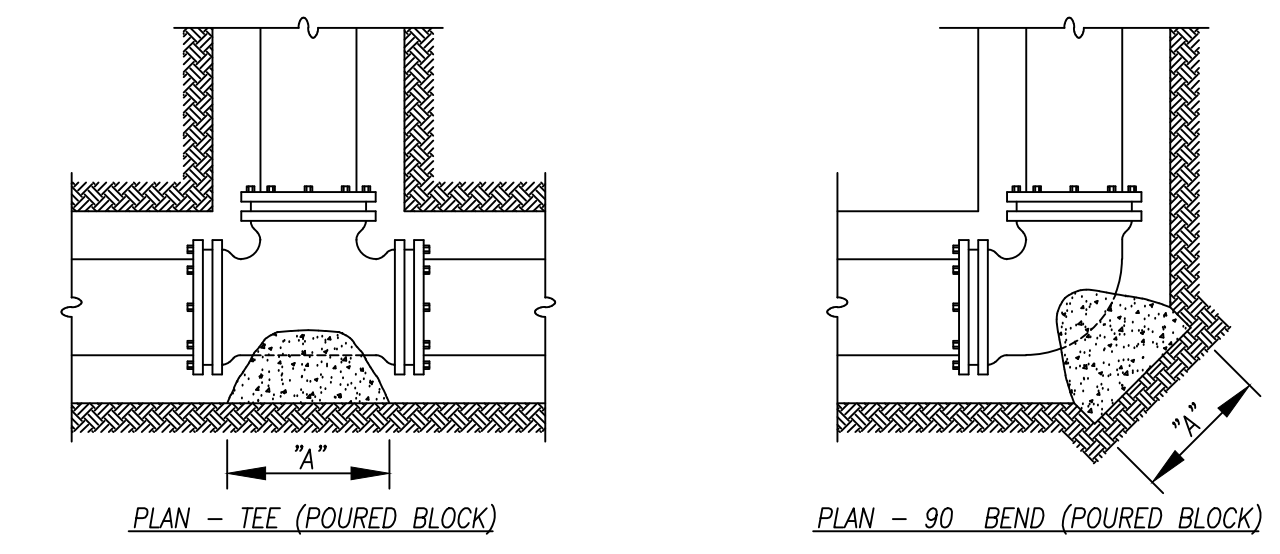
FIRM: McGhee Engineering  
 DES BY: ETH CHK BY: CWW  
 DWN BY: WAC APP BY:  
 SCALE: 1" = 50'  
 PROJECT DATE:  
 PRINTED:  
 LENGTH OF BAR IS 1" ON ORIGINAL DRAWING

Christian County Water District  
 Phase IX - Water System Upgrade  
 Root Road Waterline



May 1, 2023  
 ERIC T. HARRIS  
 23703  
 PROFESSIONAL ENGINEER  
 KY

DRAWING NO.  
 SHEET 1-P-26

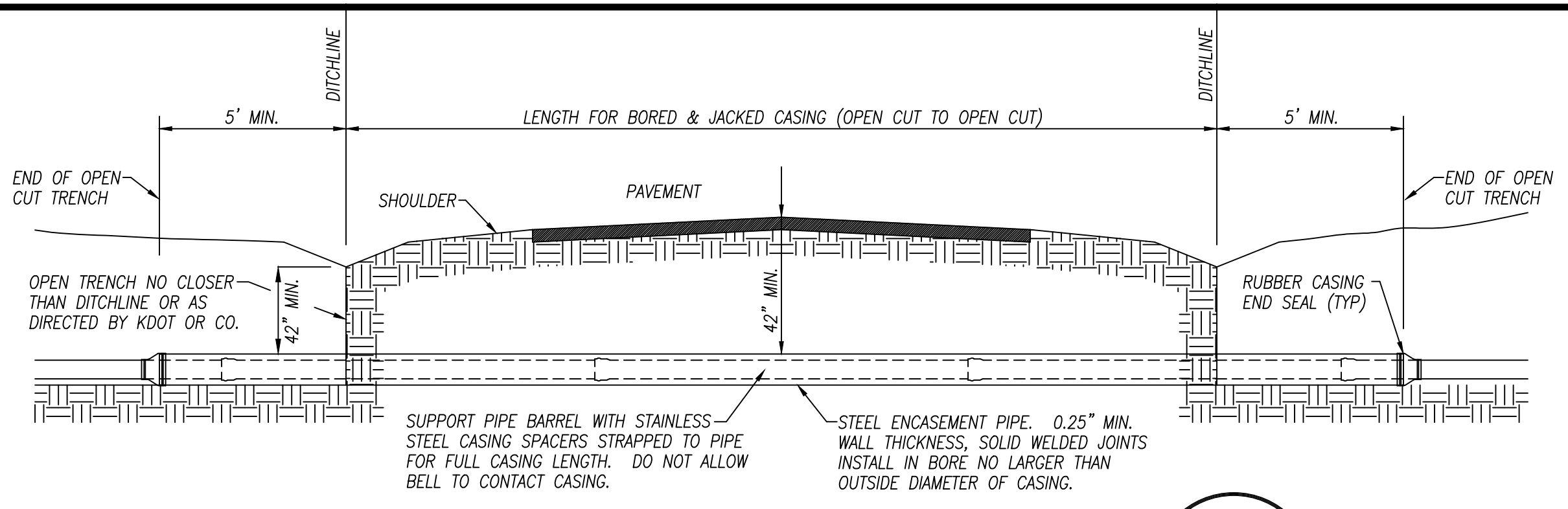


PIPE SIZE	MINIMUM BEARING AREA ("A"x"B") IN SQUARE FEET					MIN. CONC. VOLUME IN CUBIC FEET	REBAR SIZE
	TEE OR DEAD END	90° BEND	45° BEND	22 1/2° BEND	11 1/4° BEND		
2", 3" & 4"	1.0	1.5	1.0	1.0	1.0	2	1.5
6"	2.5	3.0	2.0	1.0	1.0	5	3
8"	4.0	5.5	3.0	1.5	1.0	8	5
10"	6.0	8.5	4.5	2.5	1.5	13	9
12"	8.5	12.0	6.5	3.0	2.0	18	12
16"	15.0	21.5	11.5	6.0	3.0	32	21

- NOTES**
- EVERY INSTALLED FITTINGS SHALL BE EQUIPPED WITH ROMAC GRIPPINGS (OR EQUAL) FOR RESTRAINT
  - IN UNDISTURBED EXCAVATIONS WITH SUITABLE BEARING CONDITIONS, THE CONTRACTOR SHALL UTILIZE SOLID 4-INCH THICK MASONRY BLOCKS. QUANTITY TO BE DETERMINED BY REQUIRED BEARING AREA & DISTANCE TO REACH & BEAR ON UNDISTURBED TRENCH WALL.
  - IN DISTURBED OR OVER EXCAVATIONS WITHOUT SUITABLE BEARING CONDITIONS, THE CONTRACTOR SHALL POUR & FORM CONCRETE THRUST BLOCKS PER THE ABOVE TABLE AND THE FOLLOWING:
    - CONCRETE FOR THRUST BLOCKS SHALL HAVE A MINIMUM 28-DAY COMPRESSIVE STRENGTH OF 2,500 PSI.
    - KEEP CONCRETE CLEAR OF JOINTS, GLAND BOLTS, ETC. \*ABSOLUTELY NO EXCEPTIONS!\*
    - CONCRETE THRUST BLOCKS SHALL BE CAST AGAINST SOUND, UNDISTURBED EARTH.
    - BEARING AREAS ARE BASED ON 4,000 PSF SOIL BEARING CAPACITY. WEAKER SOILS MAY REQUIRE LARGER THRUST BLOCKS.
    - THRUST BLOCK BEARING AREAS MAY BE REDUCED IN ROCK SUBJECT TO ENGINEER'S APPROVAL.
    - WHERE CONTRACTOR SUSPECTS THAT UNSUITABLE BEARING CONDITIONS EXIST, NOTIFY ENGINEER PRIOR TO CASTING THRUST BLOCK.

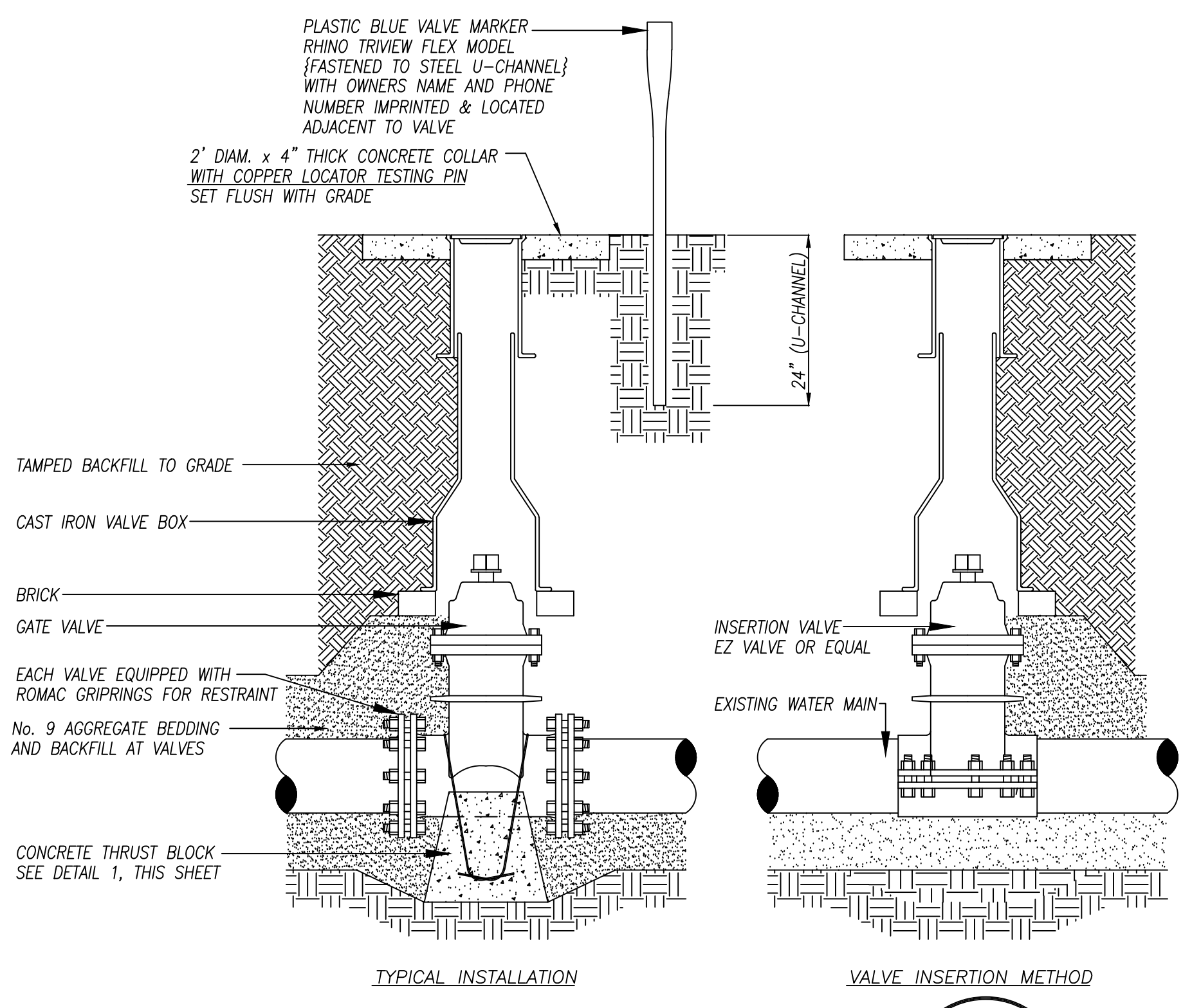
### CONCRETE THRUST BLOCKS

NOT TO SCALE



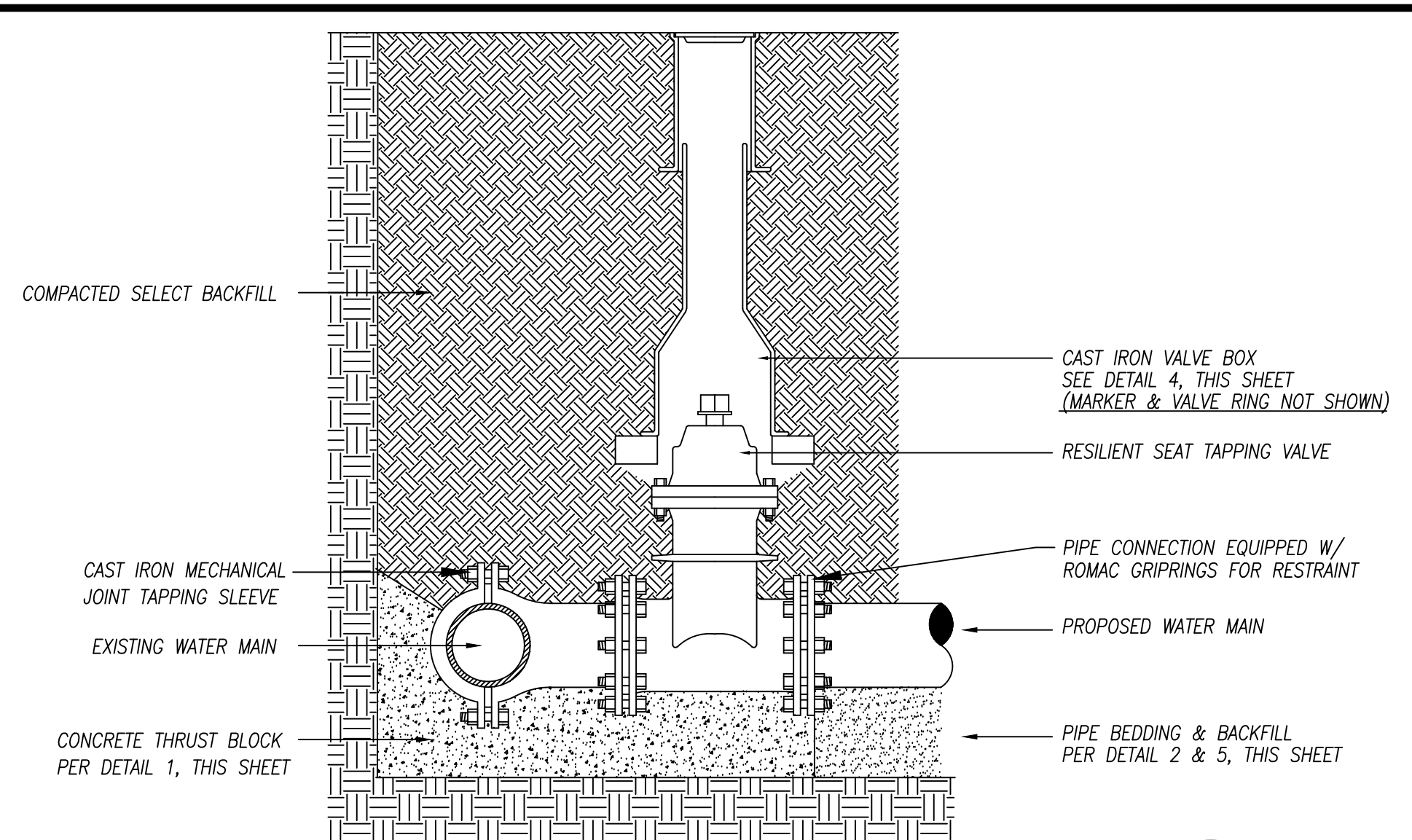
### STEEL CASED ROAD/RAILROAD BORE

NOT TO SCALE



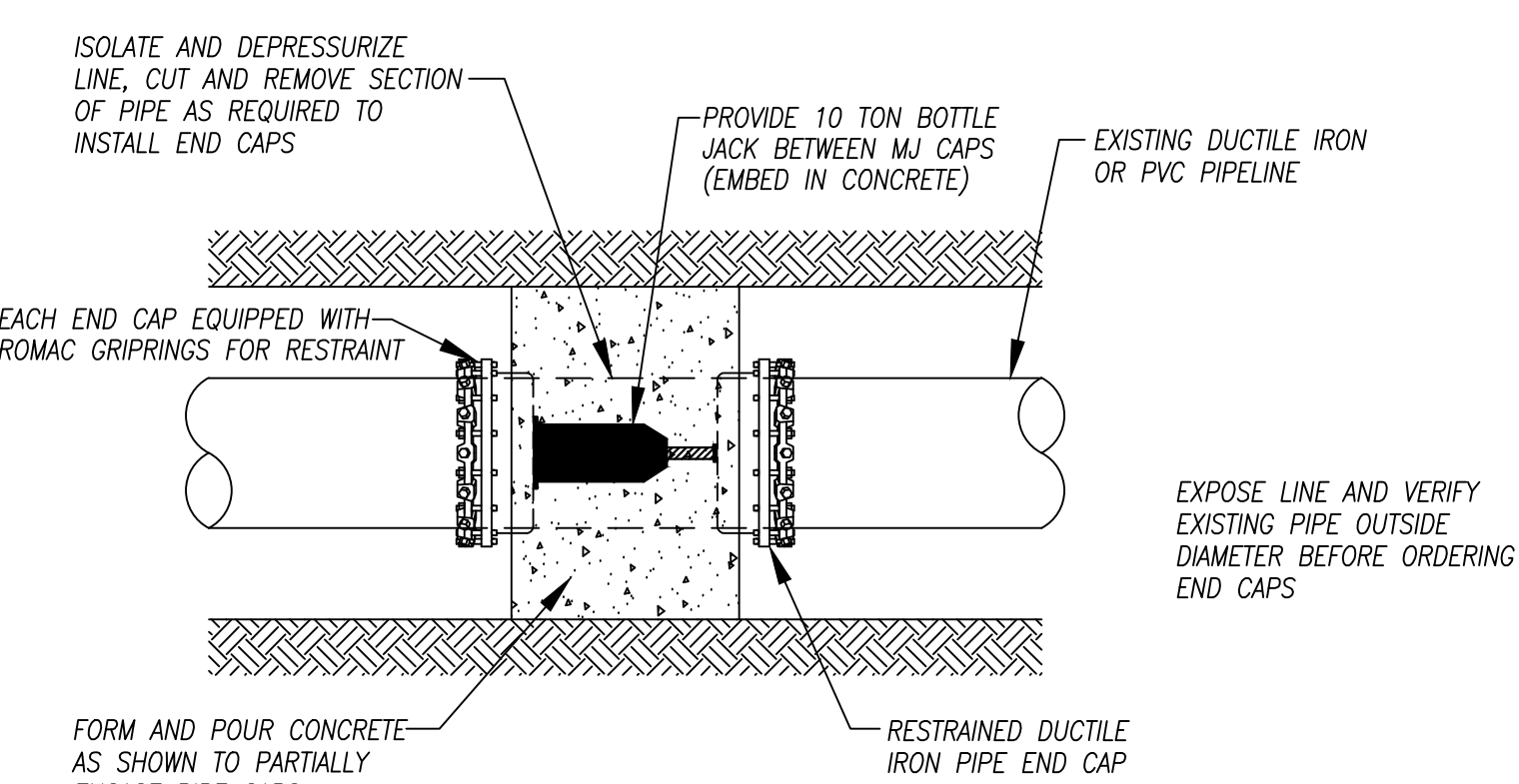
### VALVE SETTING DETAILS

NOT TO SCALE



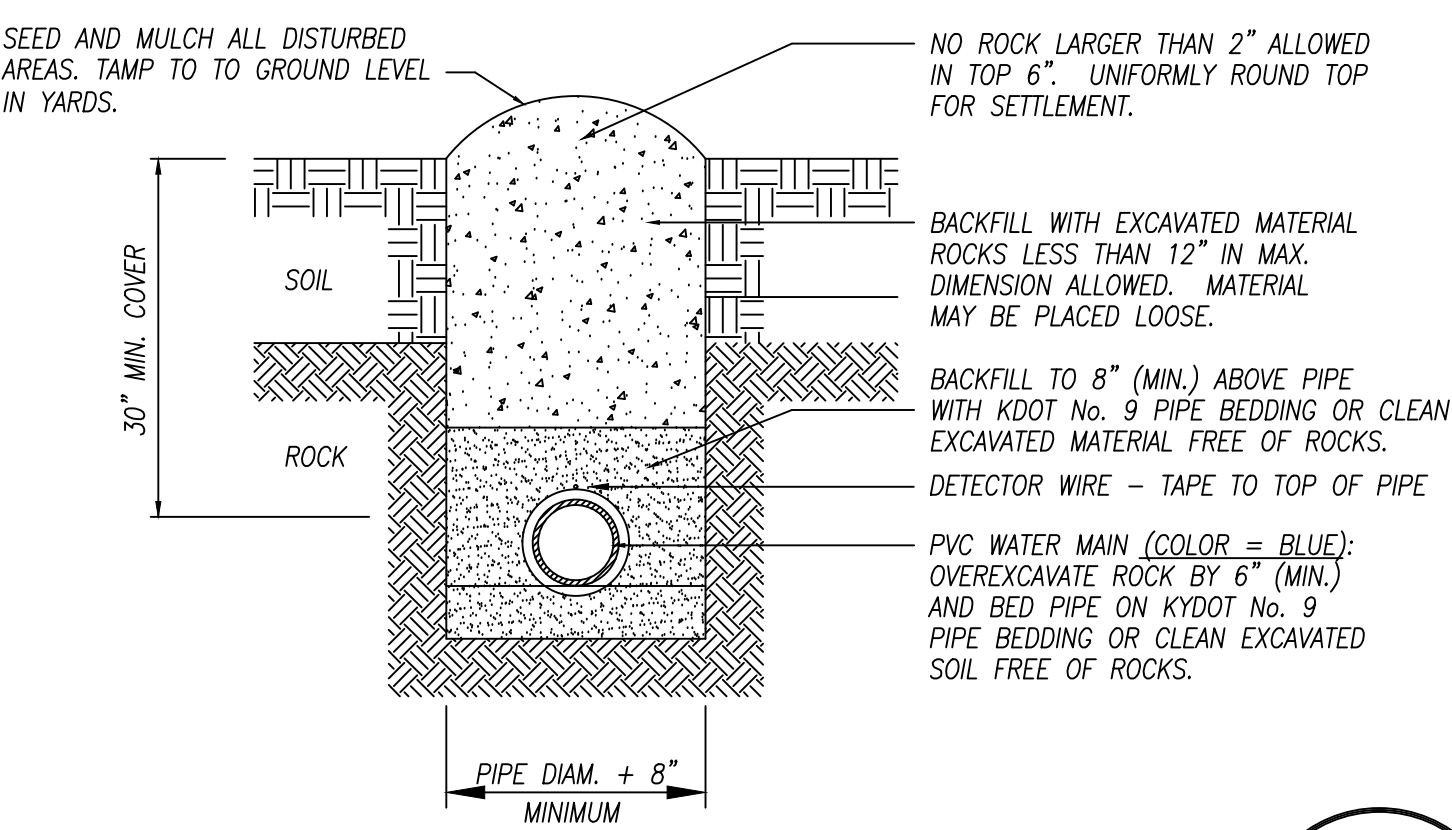
### TAPPING SLEEVE & VALVE

NOT TO SCALE



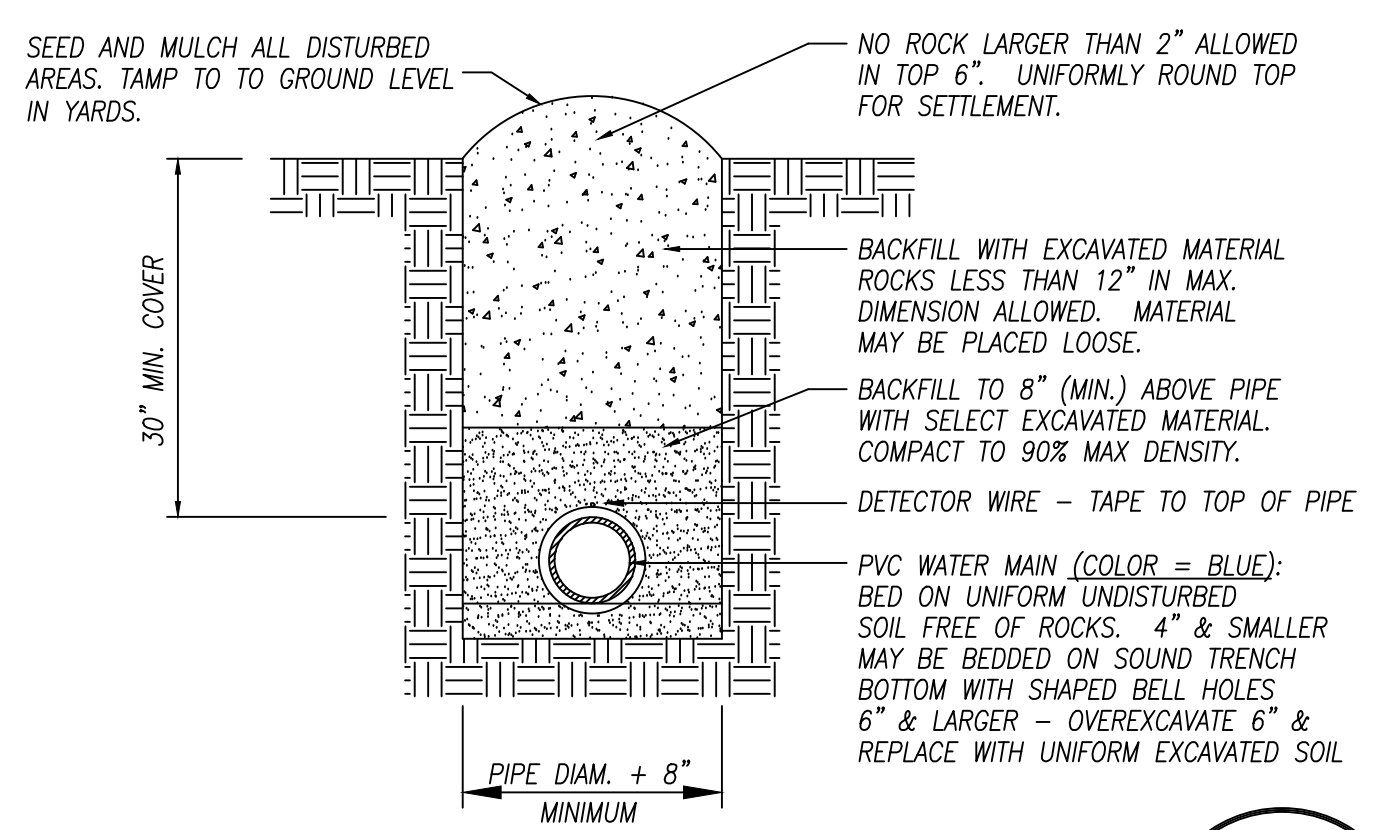
### CUT & PLUG DETAIL

NOT TO SCALE



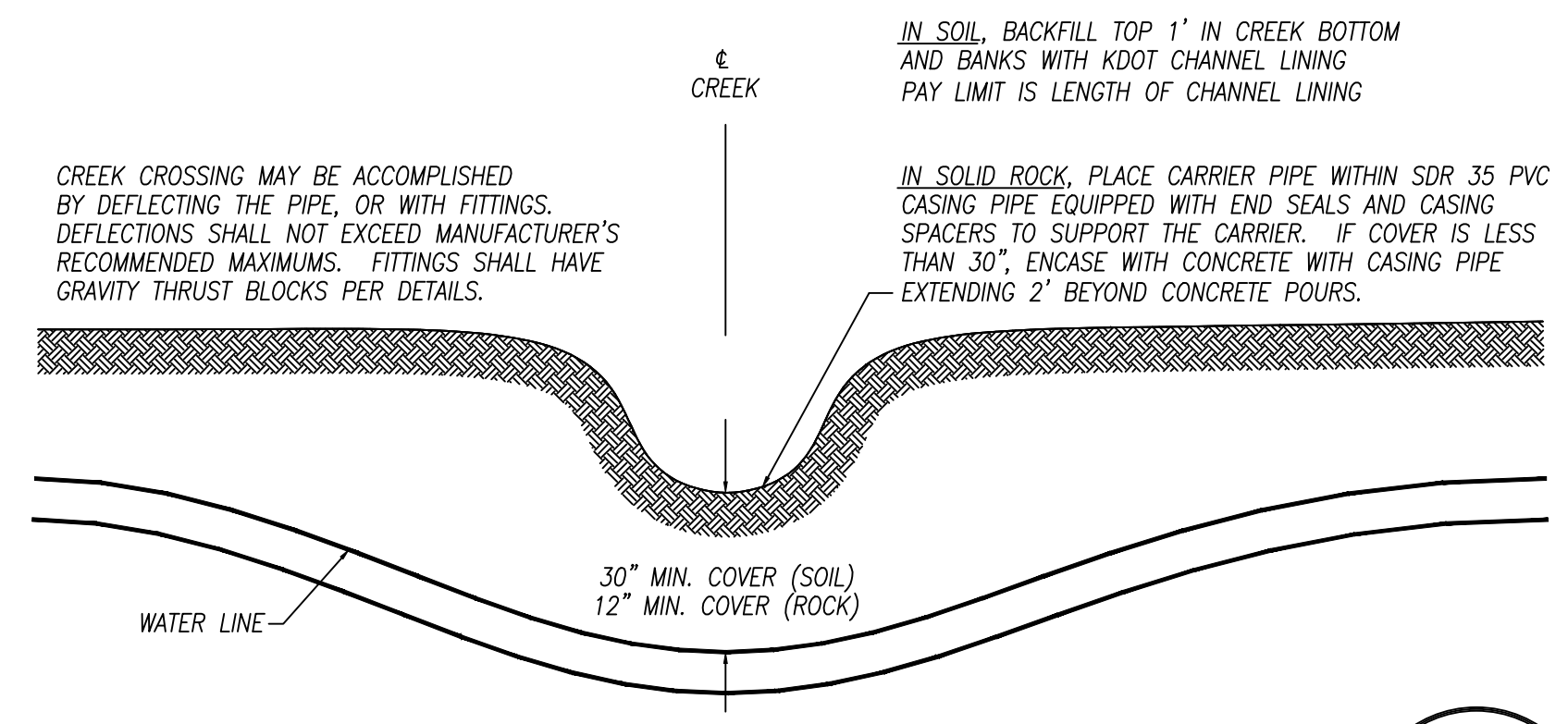
### BEDDING & BACKFILL - ROCK

NOT TO SCALE



### BEDDING & BACKFILL - SOIL

NOT TO SCALE



### SHALLOW CREEK/DITCH CROSSING

NOT TO SCALE

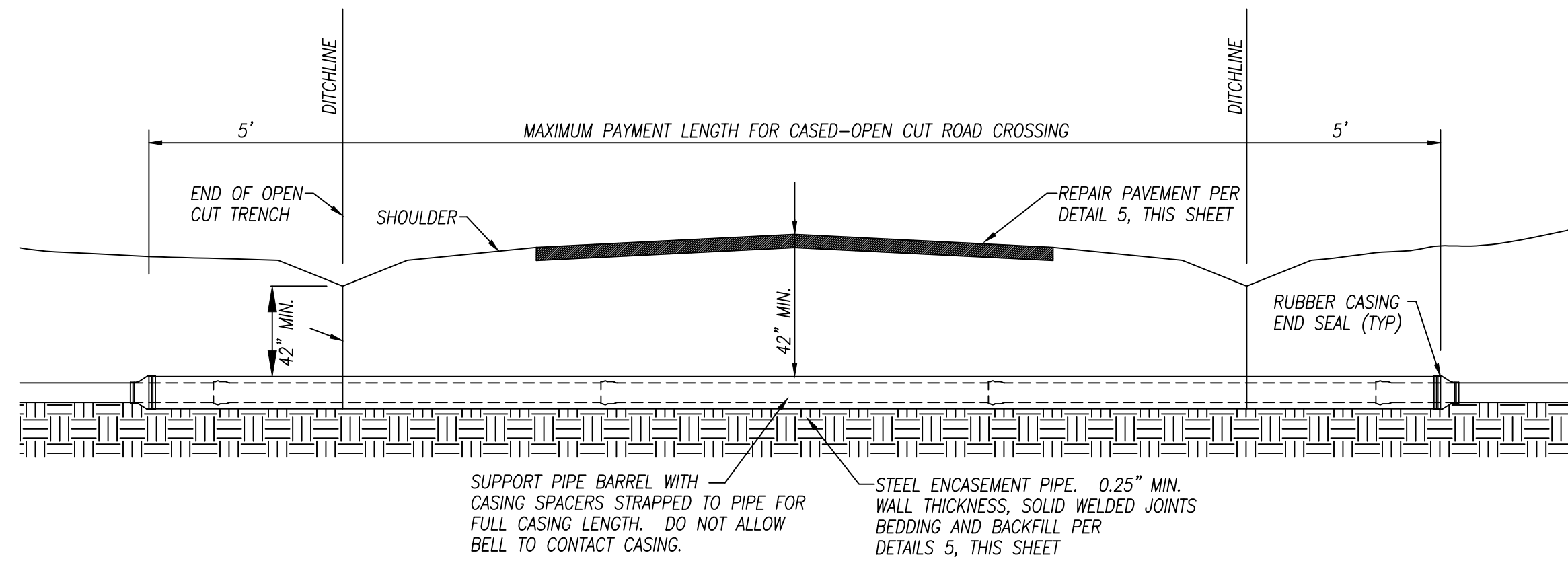
NO.	REVISION	DATE	BY
1	FOR KCOV REVIEW	05-01-23	ETH
2	REVISIONS		DB



FIRM: McGhee Engineering  
DES BY: ETH  
CHK BY: CWW  
DWN BY: WAC  
APP BY:  
SCALE: NOT TO SCALE  
PROJECT DATE:  
PRINTED:  
LENGTH OF BAR IS 1" ON ORIGINAL DRAWING

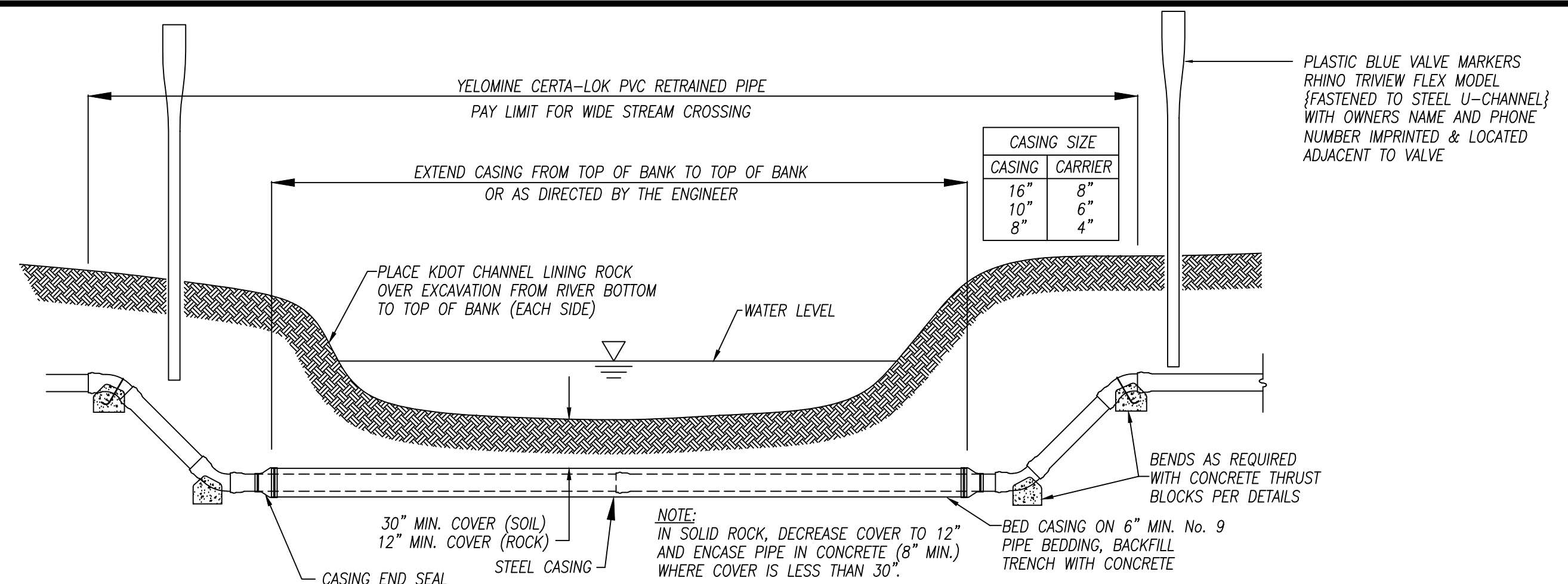
Christian County Water District  
Phase IX - Water System Upgrade  
Standard Details





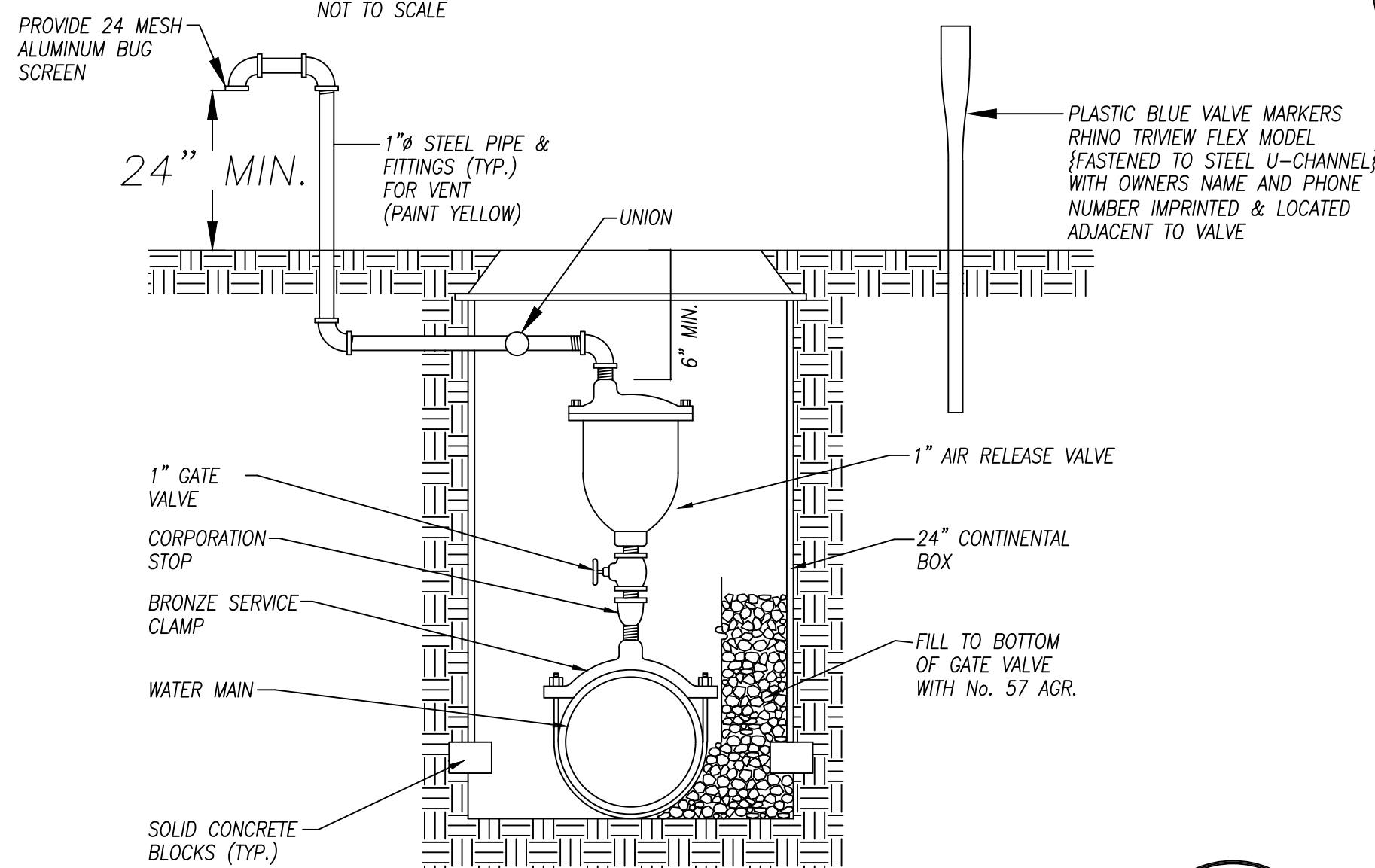
### CASED-OPEN CUT ROAD CROSSING

1  
D2



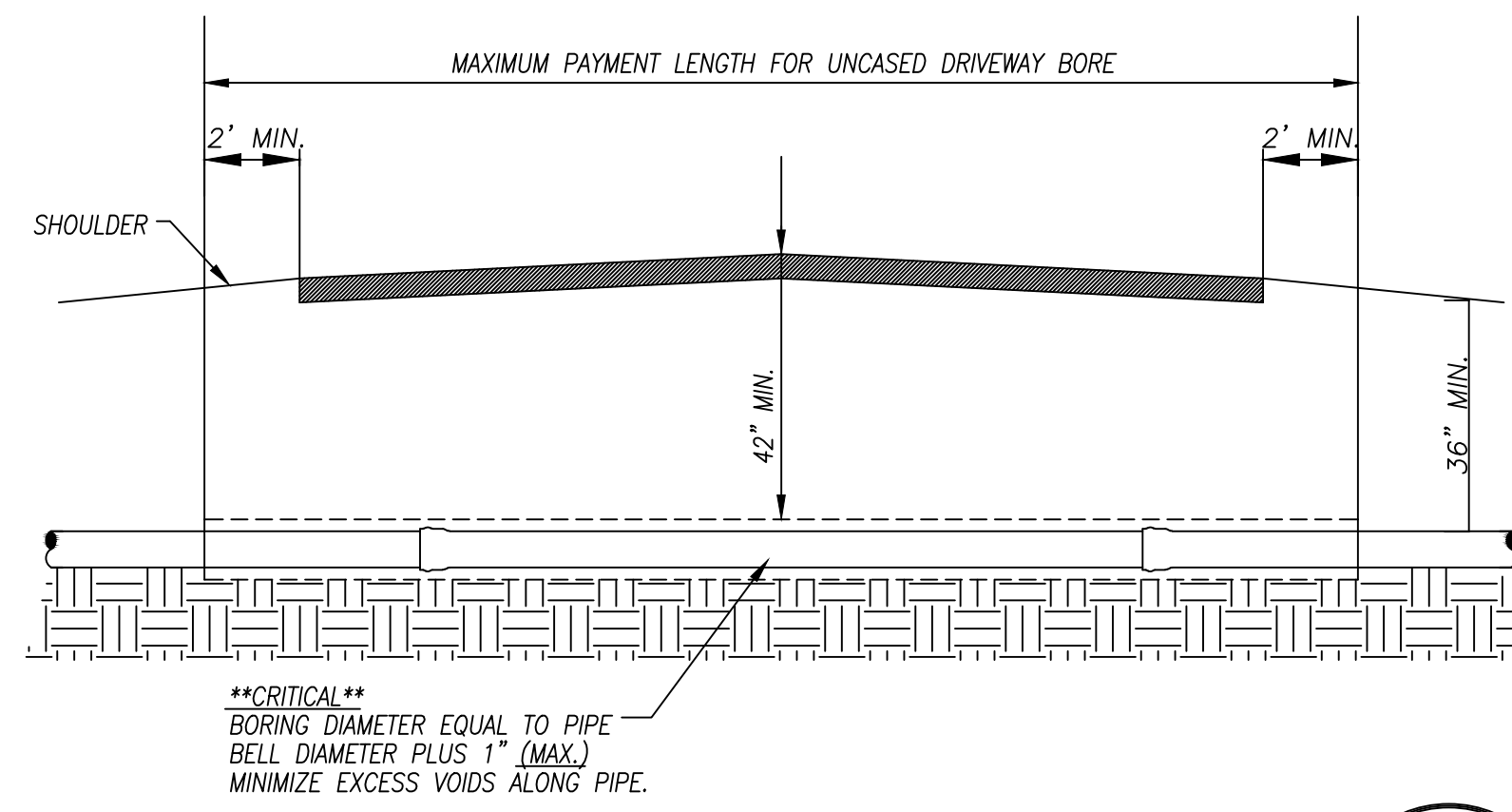
### WIDE STREAM CROSSING DETAIL

2  
D2



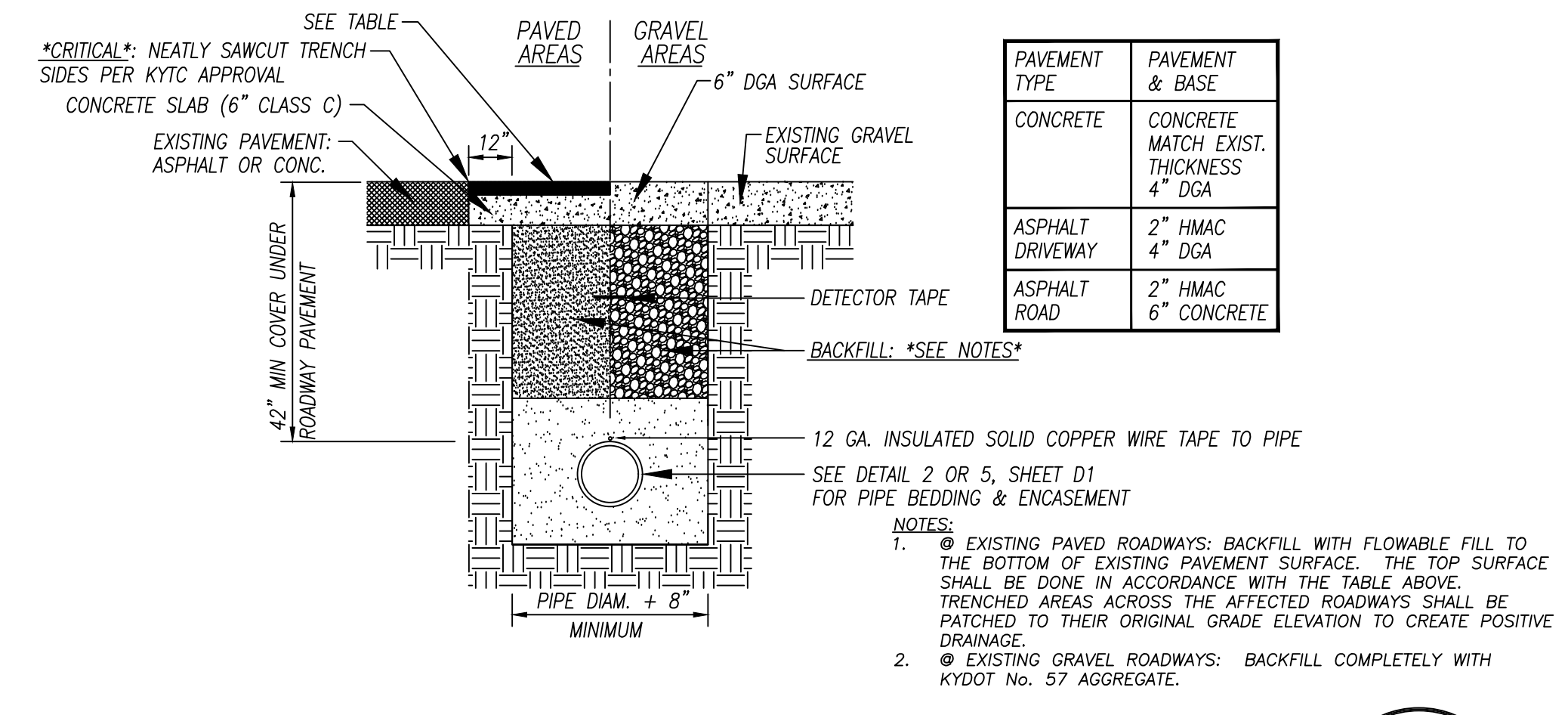
### AIR RELEASE VALVE DETAIL

3  
D2



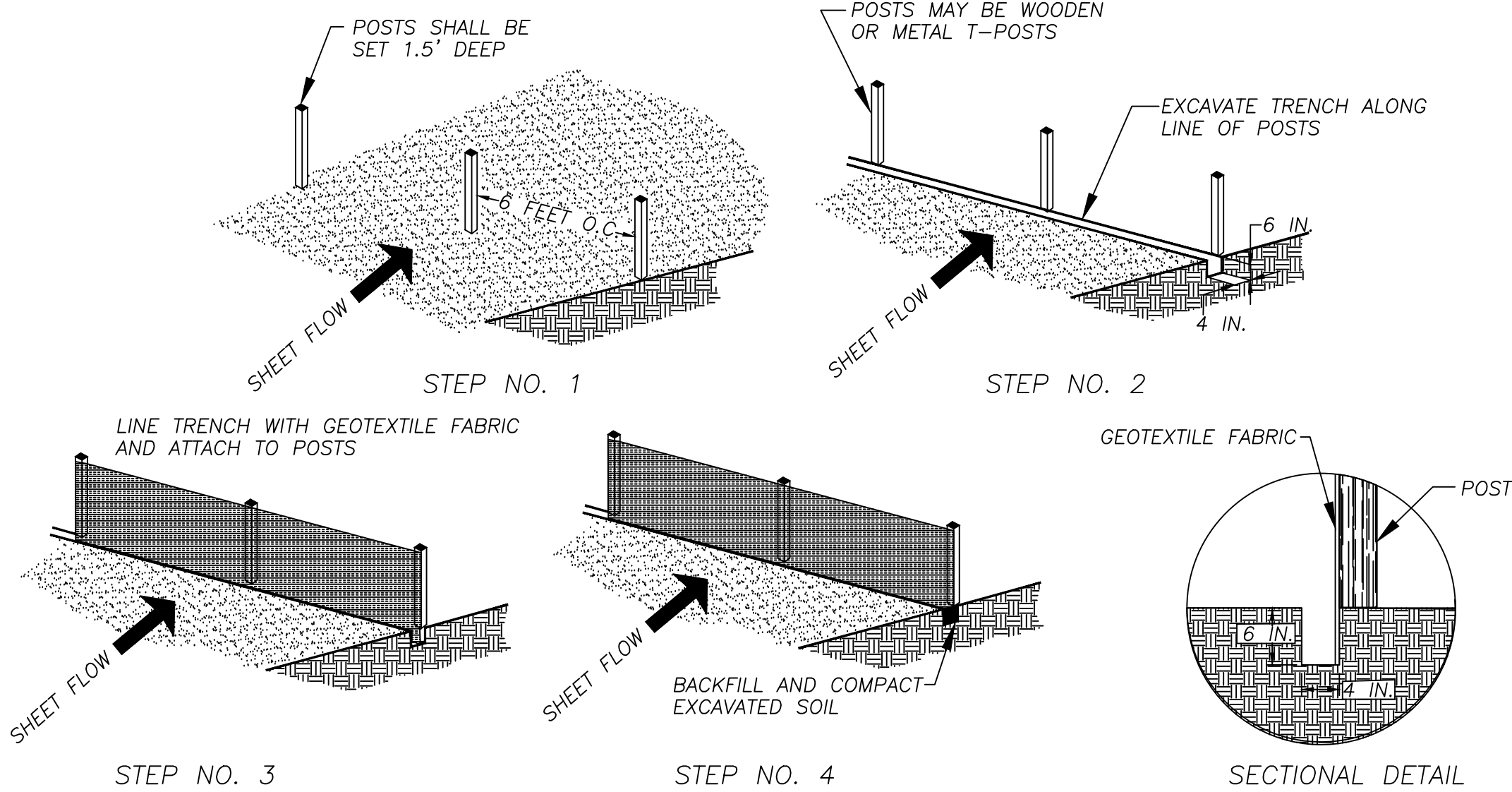
### UNCASSED DRIVEWAY BORE DETAIL

4  
D2



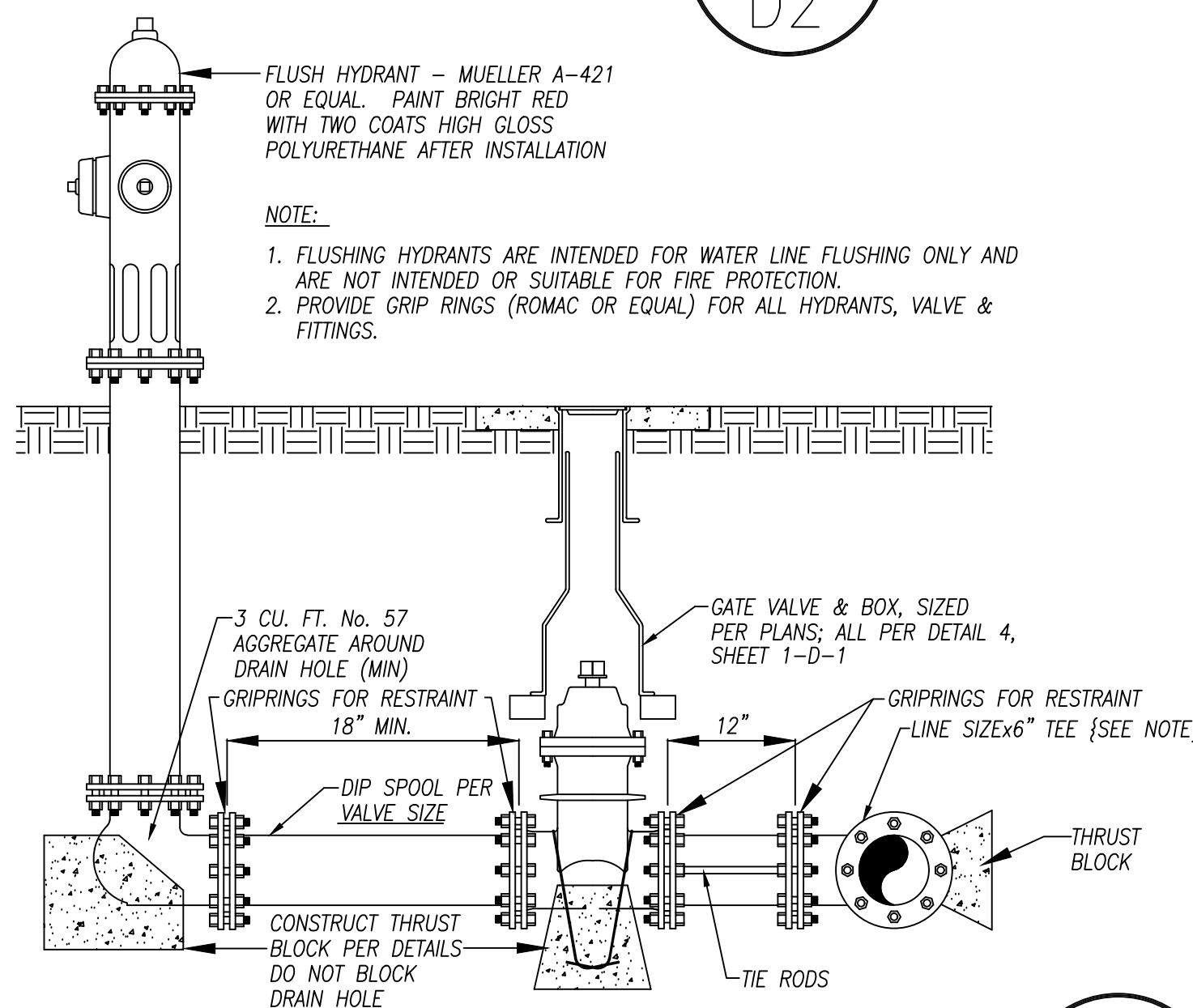
### PAVEMENT BACKFILL & REPAIR

5  
D2



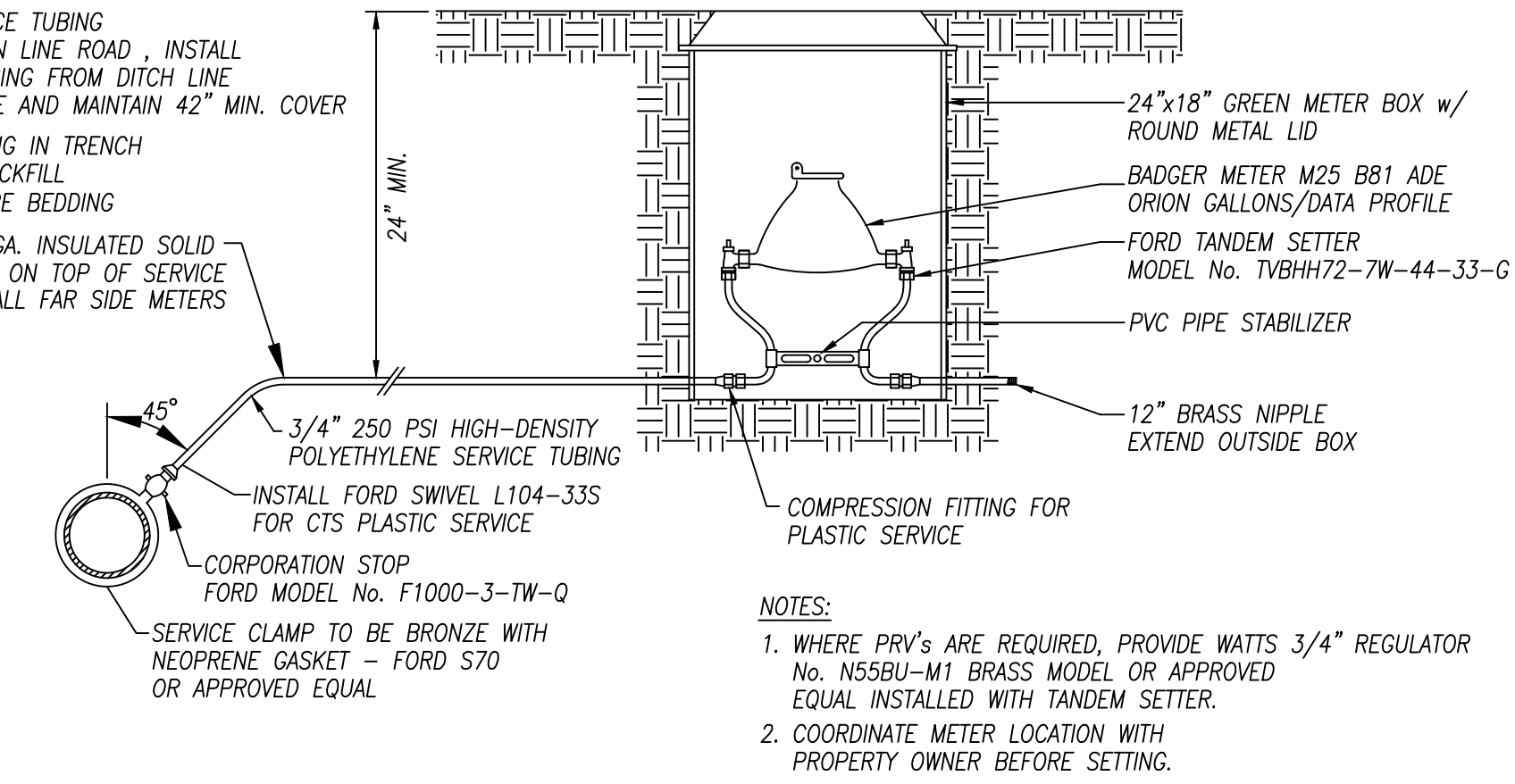
### SILT FENCE DETAIL

6  
D2



### FLUSHING HYDRANT DETAIL

7  
D2



### 3/4" METER SETTING

8  
D2

FOR NO. REVIEW	05-01-23	ETH	DR
No.	Revision	Date	By
REVISIONS			



FIRM: McGhee Engineering  
DES BY: ETH  
CHK BY: CWW  
DWN BY: WAC  
SCALE: NOT TO SCALE  
PROJECT DATE:  
PRINTED:  
LENGTH OF BAR IS 1" ON ORIGINAL DRAWING

Christian County Water District  
Phase IX - Water System Upgrade  
Standard Details

