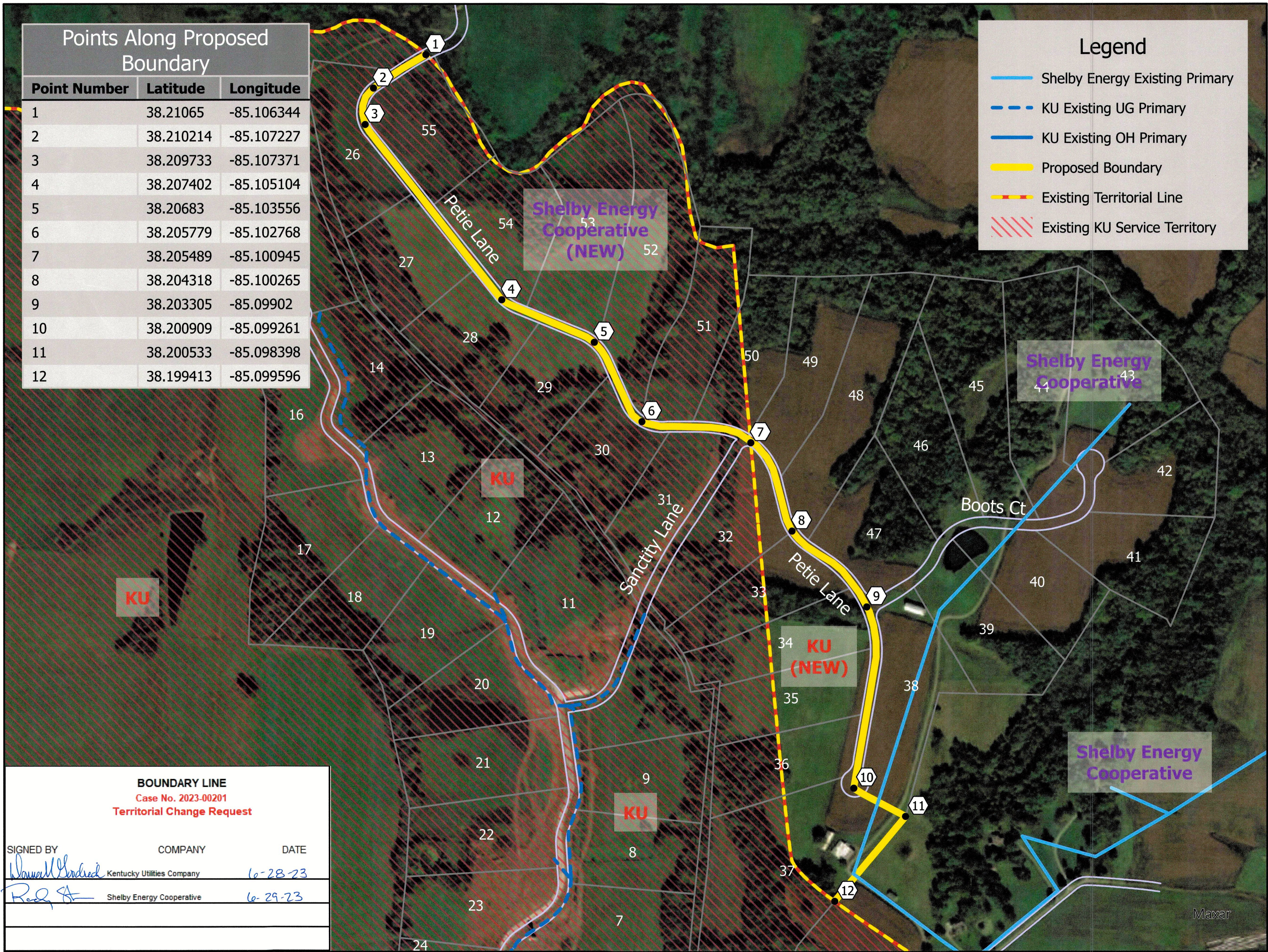


Points Along Proposed Boundary		
Point Number	Latitude	Longitude
1	38.21065	-85.106344
2	38.210214	-85.107227
3	38.209733	-85.107371
4	38.207402	-85.105104
5	38.20683	-85.103556
6	38.205779	-85.102768
7	38.205489	-85.100945
8	38.204318	-85.100265
9	38.203305	-85.09902
10	38.200909	-85.099261
11	38.200533	-85.098398
12	38.199413	-85.099596

Legend

- Shelby Energy Existing Primary
- KU Existing UG Primary
- KU Existing OH Primary
- Proposed Boundary
- Existing Territorial Line
- Existing KU Service Territory



BOUNDARY LINE		
Case No. 2023-00201		
Territorial Change Request		
SIGNED BY	COMPANY	DATE
<i>Samuel Hodrick</i>	Kentucky Utilities Company	6-28-23
<i>Reed</i>	Shelby Energy Cooperative	6-29-23