




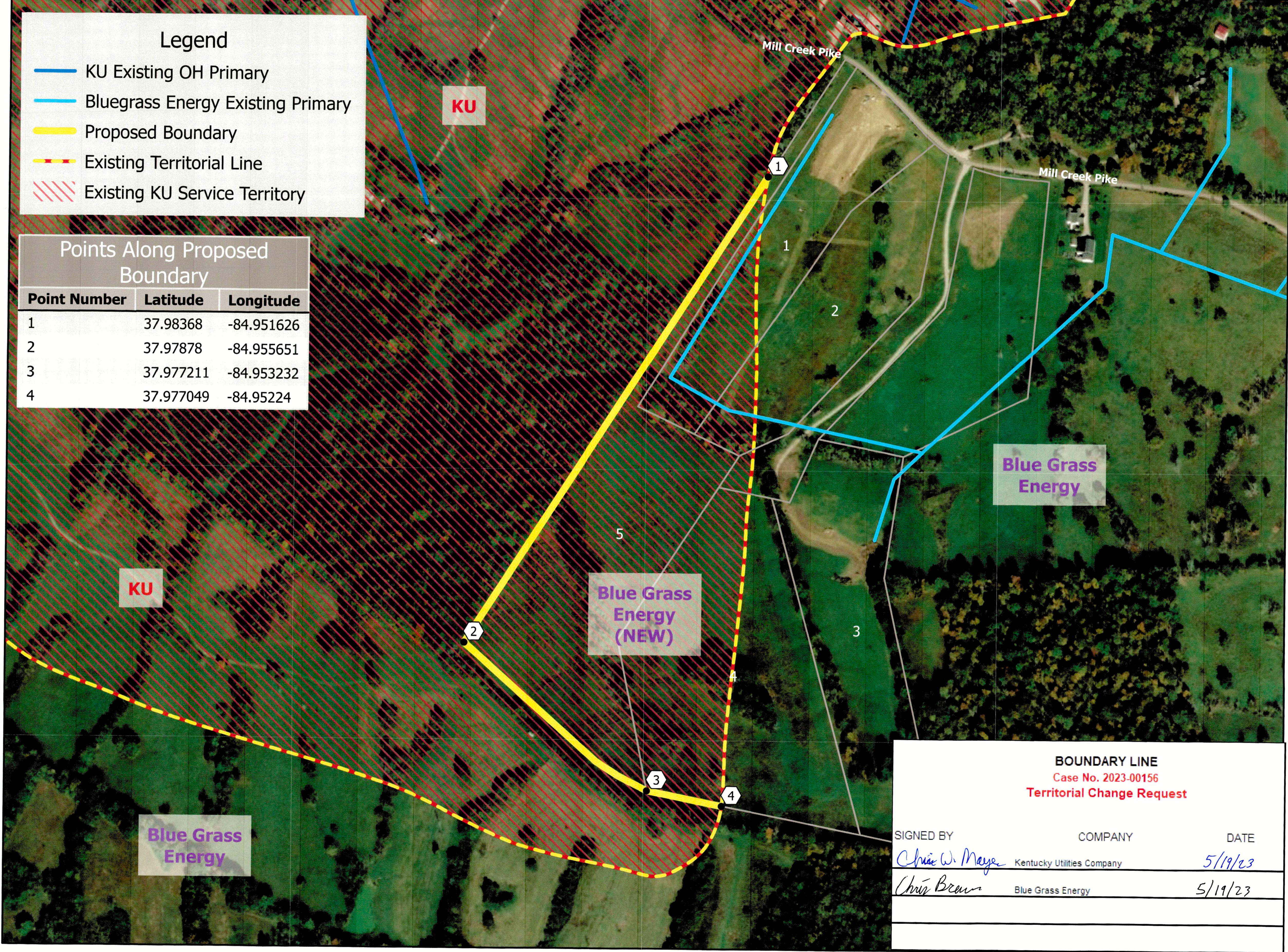


Legend

-  KU Existing OH Primary
-  Bluegrass Energy Existing Primary
-  Proposed Boundary
-  Existing Territorial Line
-  Existing KU Service Territory

Points Along Proposed Boundary

Point Number	Latitude	Longitude
1	37.98368	-84.951626
2	37.97878	-84.955651
3	37.977211	-84.953232
4	37.977049	-84.95224



BOUNDARY LINE
Case No. 2023-00156
Territorial Change Request

SIGNED BY	COMPANY	DATE
<i>Chris W. Meyer</i>	Kentucky Utilities Company	5/19/23
<i>Chris Brown</i>	Blue Grass Energy	5/19/23