

Contract No. 6
**EAST - WEST
INTERCONNECT PROJECT PHASE 2**

for the
GRAYSON COUNTY WATER DISTRICT
Leitchfield, Kentucky

DECEMBER, 2022

BOARD MEMBERS:

NANCY CAIN - CHAIRPERSON
KENNY SHARP - VICE-CHAIRMAN
MICHAEL KIPPER - SECRETARY
CRAIG CONSTANT - TREASURER
KEITH BROOKS - COMMISSIONER
JEREMY WOOSLEY - DISTRICT MANAGER



PROJECT NO. 20016-06

CONTRACT DOCUMENTS

PROJECT NO. 20016-06
SHEET NO. G-1



PROJECT LOCATION MAP, UTILITIES, LEGEND and INDEX OF DRAWINGS

CONTRACT No. 6 WATERMAIN EXTENSIONS EAST - WEST INTERCONNECT PROJECT - PHASE II GRAYSON COUNTY WATER DISTRICT



DATE	DESIGNED BY	DRAWN BY	CHECKED BY	SCALE
DECEMBER, 2022	NET	JAM	DET	AS NOTED

NO.	DATE	BY	REVISIONS
1	11/23/23	DET	ADDITIONAL No. 1

IT IS THE POLICY OF KENTUCKIANA GROUP, PLLC TO ISSUE THIS DRAWING WITHOUT WRITTEN PERMISSION FROM THE ENGINEER OF RECORD AND ANY CHANGES MADE TO THE DRAWING WILL BE SHOWN AS REVISIONS IN THIS DRAWING. THIS DRAWING WAS PREPARED AS THE SCALE INDICATED. ANY SCALE NOT INDICATED IN THE DRAWING WILL BE AT THE SCALE OF THE DRAWING. THIS DRAWING WAS PREPARED AND APPROVED BY THE ENGINEER OF RECORD AND ANY CHANGES MADE TO THIS DRAWING OR TITLE BLOCK TO DETERMINE THE ACTUAL SCALE.

LEGEND

SYMBOL	DESCRIPTION
—	PROPERTY CHANGES
—	WATER MAIN
—	WATER MAIN
—	HYDRANT ASSEMBLY
—	FLOORING/WATERWORK ASSEMBLY
—	AIR RELEASE VALVE (ARV)
—	GATE VALVE (GV)
—	SPECIAL CHECKVALVE CASING PIPE
—	WATER MAIN TO BE ABANDONED
—	RIGHT-OF-WAY LINE
—	PROPERTY LINE
—	EXISTING WATER MAIN
—	EDGE OF PAVEMENT (WHITE LINE)
—	K&OP

UTILITIES

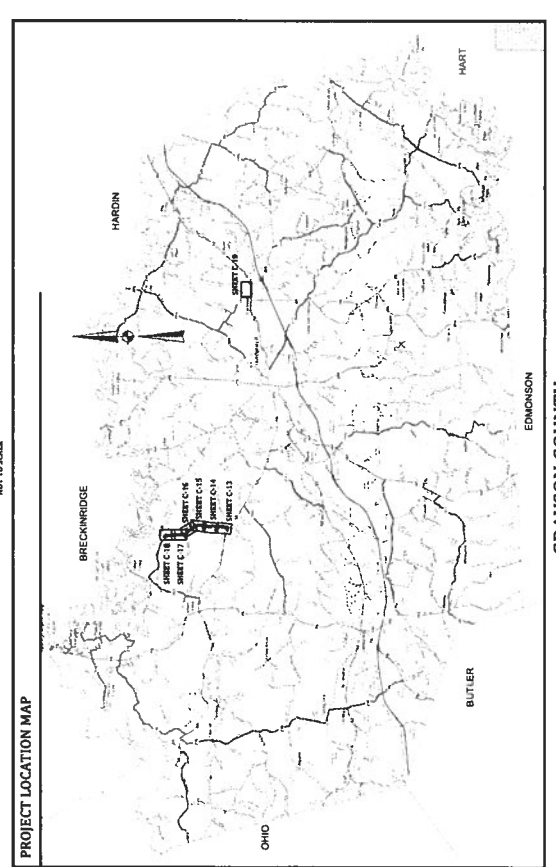
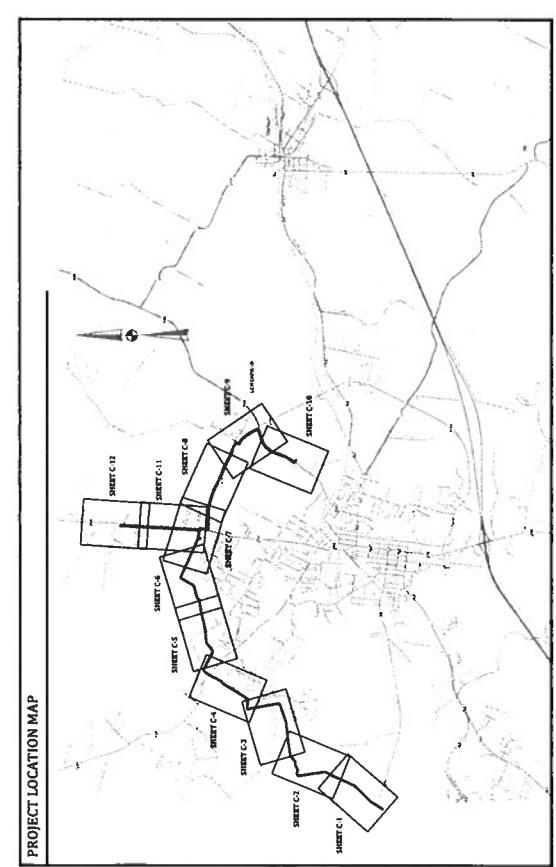
NOTE:
IN ACCORDANCE WITH KENTUCKY STATE LAW, ANY ACTIVITY THAT RESULTS IN THE REMOVAL OF UTILITIES OR THE DAMAGE OF UTILITIES SHALL BE AT THE RESPONSIBILITY OF THE CONTRACTOR. ALL UTILITIES SHALL BE LOCATED PRIOR TO CONSTRUCTION.

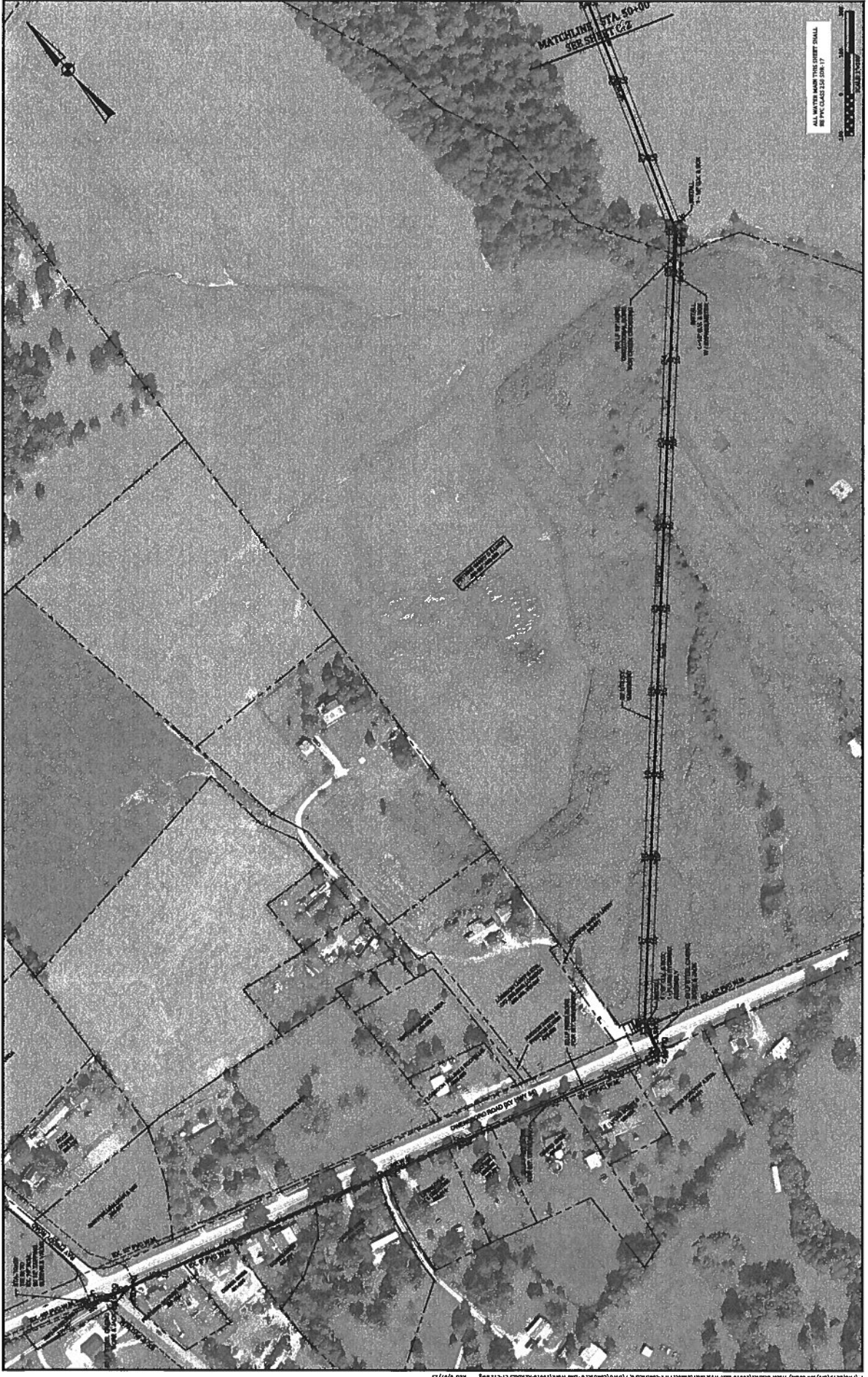
1-800-752-6007
or DIAL 811

CALL BEFORE YOU DIG
KENTUCKY WATER DISTRICT
800 WEST MAIN, MORGANTOWN, KY 40322
(703) 529-2917

INDEX OF DRAWINGS

SHEET NO.	DESCRIPTION
COVER	COVER
C-1	LOCATION MAP, LEGEND, UTILITY OWNERS and INDEX OF DRAWINGS
C-2	GENERAL NOTES
C-3	AERIAL PLAN - RT 54 TO SUNBELT RD
C-4	AERIAL PLAN - RT 54 TO SUNBELT RD
C-5	AERIAL PLAN - SUNBELT RD TO RT 727
C-6	AERIAL PLAN - RT 727 TO CAVE HILL RD
C-7	AERIAL PLAN - CAVE HILL RD TO RT 251
C-8	AERIAL PLAN - RT 251 TO RT 254
C-9	AERIAL PLAN - RT 255 - RT 628
C-10	AERIAL PLAN - RT 918
C-11	AERIAL PLAN - RT 239
C-12	AERIAL PLAN - RT 239
C-13	AERIAL PLAN - RT 239
C-14	AERIAL PLAN - DUFF RD
C-15	AERIAL PLAN - DUFF RD
C-16	AERIAL PLAN - DUFF RD
C-17	AERIAL PLAN - DUFF RD
C-18	AERIAL PLAN - DUFF RD
C-19	AERIAL PLAN - DUFF RD
C-20	SCHEMATIC WATERMAIN CONTROL BUILDING PLAN & DETAILS
C-21	RT 257 NORTH WATERS CENTER CONTROL BUILDING PLAN & DETAILS
C-22	STANDARD DETAILS





ALL WATER MAINS THIS SHEET SHALL BE PVC CLASS 250 (DN 17)

PROJECT NO. 20016-06
SHEET NO.



AERIAL PLAN

CONTRACT No. 6
WATERMAIN EXTENSIONS
EAST - WEST
INTERCONNECT PROJECT - PHASE II
GRAYSON COUNTY WATER DISTRICT



DATE	DECEMBER 2022
PROJECT MGR.	BEET
DRAWN BY	JAM
CHECKED BY	ICT
SCALE	AS NOTED

2022 © Kentucky Engineering Group, PLLC

NO.	DATE	REVISIONS	BY

IT IS A CONDITION OF ANY AND ALL PERMITS TO ENTER THE DRAWING WITHOUT WRITTEN PERMISSION FROM KENTUCKY ENGINEERING GROUP, PLLC AND ACTING ENGINEER, THAT ANY CHANGES TO THE DRAWING SHALL BE INDICATED IN THIS BLOCK. THE SCALES INDICATED IN THIS DRAWING ARE APPROXIMATE AND BEING INTRODUCED WITH THIS DRAWING ARE APPROXIMATE DRAWING OR TITLE BLOCK TO DETERMINE THE ACTUAL SCALE.



ALL WATER MAIN THIS SHEET SHALL BE PROPOSED UNLESS NOTED OTHERWISE

PROJECT NO. 20016-06
SHEET NO. C-2



AERIAL PLAN

**CONTRACT No. 6
WATERMAIN EXTENSIONS
EAST - WEST
INTERCONNECT PROJECT - PHASE II
GRAYSON COUNTY WATER DISTRICT**



DATE	DECEMBER, 2022
PROJECT NO.	20016-06
DRAWN BY	JAN
CHECKED BY	JET
SCALE	AS NOTED
2022 © Kentucky Engineering Group, PLLC	

NO.	DATE	REVISIONS	BY

IF THE LOCATION OF ANY BOX OR ANY PART THEREOF IS NOT SHOWN IN THIS DRAWING, THE LOCATION SHALL BE AS SHOWN IN THE ORIGINAL RECORD DRAWING UNDER THE DIRECTION OF A LICENSED ENGINEER.
THIS DRAWING WAS PREPARED AT THE SCALE INDICATED. DIMENSIONS IN THE STATED SCALE MAY VARY FROM THE ACTUAL DIMENSIONS. IF ANY DIMENSIONS ARE NOT SHOWN IN THIS DRAWING, USE THE GRAPHIC SCALE BAR IN THE DRAWING OR TITLE BLOCK TO DETERMINE THE ACTUAL SCALE.



PROJECT NO. 20016-06
SHEET NO. C-3



AERIAL PLAN

CONTRACT No. 6
WATERMAIN EXTENSIONS
EAST - WEST
INTERCONNECT PROJECT - PHASE II
GRAYSON COUNTY WATER DISTRICT

P.O. Box 1074
VERSAILLES, KENTUCKY 40383

KENTUCKY
ENGINEERING
GROUP, PLLC

DATE	DECEMBER, 2022
PROJECT NO.	20016-06
DRAWN BY	JAB
CHECKED BY	ICT
SCALE	AS SHOWN
© 2022 Kentucky Engineering Group, PLLC	

NO.	DATE	REVISIONS	BY

THIS IS A PRELIMINARY DRAWING FOR THE PROJECT. IT IS NOT TO BE USED FOR CONSTRUCTION WITHOUT THE WRITTEN PERMISSION FROM KENTUCKY ENGINEERING GROUP, PLLC AND ACTING PROJECT MANAGER. ANY CHANGES TO THIS DRAWING SHALL BE MADE BY THE ENGINEER. THIS DRAWING IS NOT TO BE USED FOR ANY OTHER PURPOSES. ANY REPRODUCTION OF THIS DRAWING SHALL BE AT THE USER'S RISK. THIS DRAWING IS NOT TO BE USED FOR ANY OTHER PURPOSES. ANY REPRODUCTION OF THIS DRAWING SHALL BE AT THE USER'S RISK. THIS DRAWING IS NOT TO BE USED FOR ANY OTHER PURPOSES. ANY REPRODUCTION OF THIS DRAWING SHALL BE AT THE USER'S RISK.



ALL WATER MAIN THIS SHEET SHALL BE PIP CLASS 200 SDR 17

PROJECT NO. 20016-06
SHEET NO. C-4



AERIAL PLAN

**CONTRACT No. 6
WATERMAIN EXTENSIONS
EAST - WEST
INTERCONNECT PROJECT - PHASE II
GRAYSON COUNTY WATER DISTRICT**



DATE	DECEMBER 10, 2022
PROJECT MGR	RET
DRAWN BY	JAR
CHECKED BY	JCT
SCALE	AS SHOWN
2022 © Kentuckiana Engineering Group, PLLC	

NO	DATE	REVISIONS	BY

THIS DRAWING IS THE PROPERTY OF KENTUCKIANA ENGINEERING GROUP, PLLC AND SHALL BE KEPT IN CONFIDENCE. IT IS TO BE USED ONLY FOR THE PROJECT AND SITE SPECIFICALLY IDENTIFIED HEREON. NO PART OF THIS DRAWING IS TO BE REPRODUCED OR TRANSMITTED IN ANY FORM OR BY ANY MEANS, ELECTRONIC OR MECHANICAL, INCLUDING PHOTOCOPYING, RECORDING, OR BY ANY INFORMATION STORAGE AND RETRIEVAL SYSTEM, WITHOUT THE WRITTEN PERMISSION OF KENTUCKIANA ENGINEERING GROUP, PLLC. ANY UNAUTHORIZED REPRODUCTION OR TRANSMISSION OF THIS DRAWING IS STRICTLY PROHIBITED AND WILL BE PROSECUTED TO THE FULL EXTENT OF THE LAW.



PROJECT NO. 2016-06
SHEET NO. C-5



AERIAL PLAN

**CONTRACT No. 6
WATERMAIN EXTENSIONS
EAST - WEST
INTERCONNECT PROJECT - PHASE II
GRAYSON COUNTY WATER DISTRICT**



DATE	DECEMBER, 2022
PROJECT MGR.	RET
DRAWN BY	JAB
CHECKED BY	KT
SCALE	AS NOTED
2022 © Kentuckiana Engineering Group, P.L.L.C.	

NO.	DATE	BY	REVISION

IT IS THE POLICY OF KENTUCKIANA ENGINEERING GROUP, P.L.L.C. TO PROVIDE THE LATEST INFORMATION AVAILABLE FOR ANY PROJECT TO THE CLIENT. THE DRAWING IS THE PROPERTY OF KENTUCKIANA ENGINEERING GROUP, P.L.L.C. AND SHALL BE RETURNED TO THE ENGINEER UPON COMPLETION OF THE PROJECT. ANY REVISIONS TO THE DRAWING SHALL BE INDICATED BY A CIRCLED NUMBER AND SHALL BE APPROVED BY THE ENGINEER. ANY CHANGES TO THE DRAWING SHALL BE APPROVED BY THE ENGINEER. ANY CHANGES TO THE DRAWING SHALL BE APPROVED BY THE ENGINEER. ANY CHANGES TO THE DRAWING SHALL BE APPROVED BY THE ENGINEER.



PROJECT NO. 20016-06
SHEET NO. C-6



AERIAL PLAN

**CONTRACT No. 6
WATER MAIN EXTENSIONS
EAST - WEST
INTERCONNECT PROJECT - PHASE II
GRAYSON COUNTY WATER DISTRICT**



DATE:	DECEMBER 8, 2022
PROJECT NO.:	20016-06
DRAWN BY:	JAR
CHECKED BY:	JET
SCALE:	AS NOTED
© 2022 Kentucky Engineering Group, PLLC	

NO.	DATE	REVISIONS

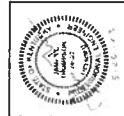
IT IS A VIOLATION OF LAW FOR ANY PERSON TO ALTER THIS DRAWING WITHOUT WRITTEN PERMISSION FROM THE ENGINEER OF RECORD. ANY CHANGES MADE MUST BE IN THE DIRECTION OF A LICENSED ENGINEER. THIS DRAWING WAS PREPARED AT THE SCALE INDICATED. INDICATORS IN THE STATED SCALE MAY BE USED TO DETERMINE THE ACTUAL SCALE. IF ANY MEASUREMENTS ARE TO BE MADE, THEY SHOULD BE MADE AT THE SCALE INDICATED IN THE DRAWING OR TITLE BLOCK TO DETERMINE THE ACTUAL SCALE.



ALL WATER MAIN THIS SHEET SHALL BE 15" DIA. 150' DIA. 15"

PROJECT NO. 20016-06

SHEET NO. C-8



AERIAL PLAN

**CONTRACT No. 6
WATERMAIN EXTENSIONS
EAST - WEST
INTERCONNECT PROJECT - PHASE II
GRAYSON COUNTY WATER DISTRICT**



DATE	DECEMBER 2, 2022
PROJECT NO.	RET
DRAWN BY	JAB
CHECKED BY	JT
SCALE	AS NOTED

NO.	DATE	REVISIONS	BY

IT IS A VIOLATION OF LAW FOR ANY PERSON TO ALTER THIS DRAWING WITHOUT WRITTEN PERMISSION FROM THE ENGINEER OF RECORD OR ANY PERSON ACTING UNDER THE DIRECTION OF A LICENSED ENGINEER.

THIS DRAWING WAS PREPARED AT THE SCALE INDICATED. DIMENSIONS ON THIS DRAWING MAY VARY FROM THE ACTUAL SCALE MAIN IN THE DRAWING OR TITLE BLOCK TO DETERMINE THE ACTUAL SCALE.



ALL WATER MAIN THIS SHEET SHALL BE PFC CLASS (SEE SHEET C-1)

PROJECT NO. 20016-06
SHEET NO. C-9



AERIAL PLAN

**CONTRACT No. 6
WATERMAIN EXTENSIONS
EAST - WEST
INTERCONNECT PROJECT - PHASE II
GRAYSON COUNTY WATER DISTRICT**



P.O. Box 1034
VERSAILLES, KENTUCKY 40383
**KENTUCKY
ENGINEERING
GROUP, PLLC**

DATE:	DECEMBER 8, 2022
PROJECT NO.:	20016-06
DRAWN BY:	JAR
CHECKED BY:	KET
SCALE:	AS SHOWN
©2022 Kentucky Engineering Group, PLLC	

IT IS A VIOLATION OF LAW FOR ANY PERSON TO ALTER THIS DRAWING WITHOUT WRITTEN PERMISSION FROM THE ENGINEER OF RECORD. ANY CHANGES MADE HEREON SHALL BE THE RESPONSIBILITY OF THE ENGINEER OF RECORD. THIS DRAWING WAS PREPARED AT THE SCALE INDICATED. MATCHLINES IN THE STATED SCALE MAY BE INDICATED BY DASHED LINES. MATCHLINES IN THIS DRAWING OR TITLE BLOCK TO DETERMINE THE ACTUAL SCALE.

PROJECT NO. 20016-06
SHEET NO. C-10



AERIAL PLAN

**CONTRACT No. 6
WATERMAIN EXTENSIONS
EAST - WEST
INTERCONNECT PROJECT - PHASE II
GRAYSON COUNTY WATER DISTRICT**



DATE		DECEMBER 2, 2022	
PROJECT MGR.	NET		
DRAWN BY:	JAN		
CHECKED BY:	KCT		
SCALE:	AS SHOWN		
2022 © Kentucky Engineering Group, PLLC			

NO.	DATE	REVISIONS	BY

THIS IS A PRELIMINARY DESIGN AND NOT MEANT TO BE A FINAL DESIGN. THE DRAWING IS THE PROPERTY OF KENTUCKY ENGINEERING GROUP, PLLC AND NOT BE REPRODUCED, COPIED, OR TRANSMITTED IN ANY FORM OR BY ANY MEANS, WITHOUT WRITTEN PERMISSION FROM KENTUCKY ENGINEERING GROUP, PLLC. ANY CHANGES TO THIS DRAWING MUST BE APPROVED BY THE ENGINEER OF RECORD. THIS DRAWING IS TO BE USED AS A REFERENCE ONLY. ANY CHANGES TO THIS DRAWING INDICATED IN THIS DRAWING SHALL BE INTENDED TO BE INTRODUCED INTO THE FINAL DESIGN. ANY CHANGES TO THIS DRAWING INDICATED IN THIS DRAWING SHALL BE INTENDED TO BE INTRODUCED INTO THE FINAL DESIGN. ANY CHANGES TO THIS DRAWING INDICATED IN THIS DRAWING SHALL BE INTENDED TO BE INTRODUCED INTO THE FINAL DESIGN. ANY CHANGES TO THIS DRAWING INDICATED IN THIS DRAWING SHALL BE INTENDED TO BE INTRODUCED INTO THE FINAL DESIGN.



PROJECT NO. 20016-06
SHEET NO. C-11



ABRIAL PLAN

CONTRACT No. 6
WATERMAIN EXTENSIONS
EAST - WEST
INTERCONNECT PROJECT - PHASE II
GRAYSON COUNTY WATER DISTRICT

P.O. Box 1076
VERSAILLES, KENTUCKY 40383

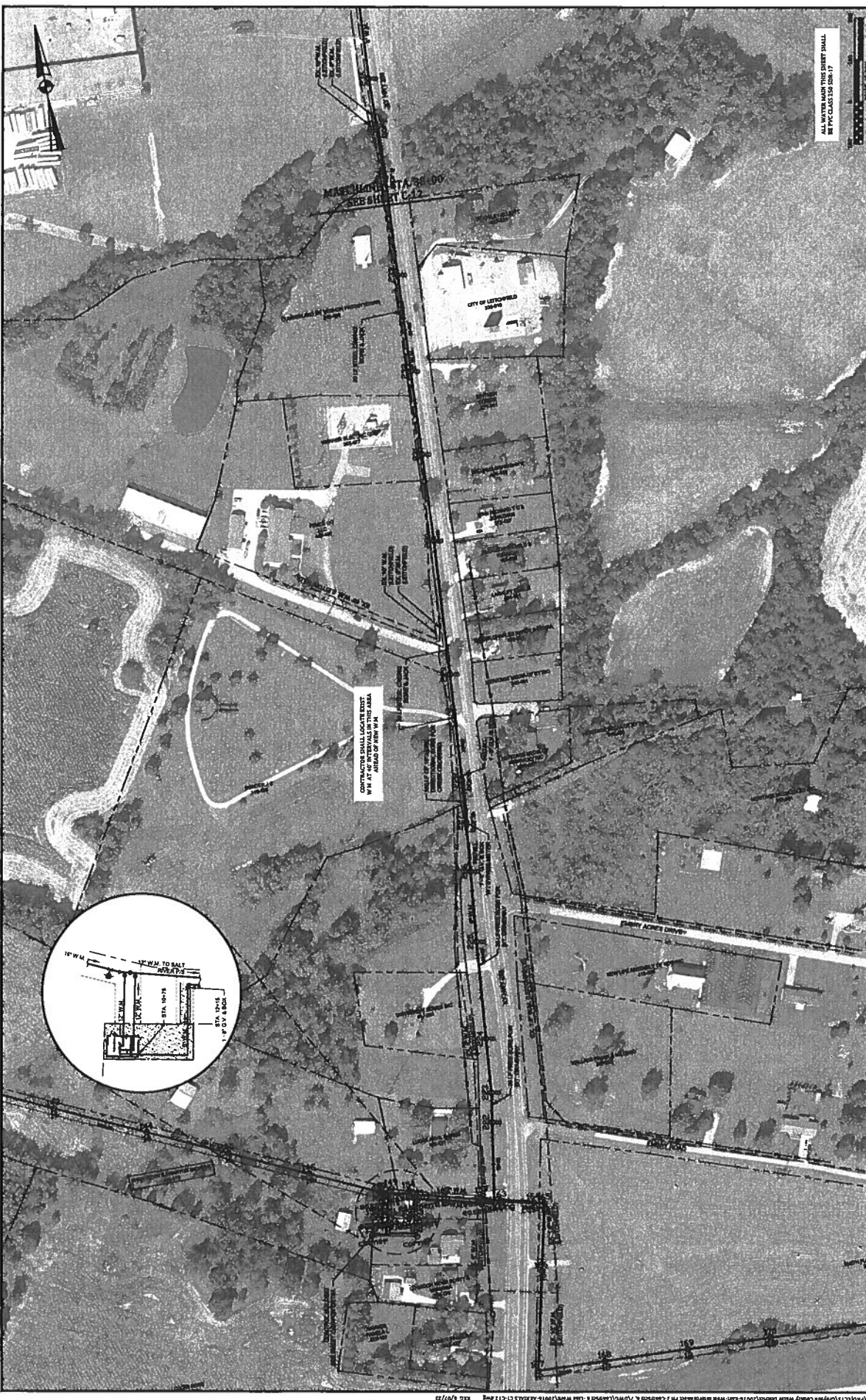
KENTUCKIANA
ENGINEERING
GROUP, LLC

DATE	DECEMBER 3, 2022
PROJECT FILE	NET
DRAWN BY	JAM
CHECKED BY	KCT
SCALE	AS SHOWN
3225 Old Kentucky Engineering Group, LLC	

NO.	DATE	REVISIONS

IT IS THE INDICATION OF LAW FOR ANY PERSON TO ALTER THIS DRAWING WITHOUT WRITTEN PERMISSION FROM THE ENGINEER OR ARCHITECT. ANY SUCH ALTERATION UNDER THE DIRECTION OF A LICENSED ENGINEER.

THIS DRAWING WAS PREPARED AT THE SCALE INDICATED. INACCURACIES IN THE STATED SCALE MAY BE THE RESULT OF ROUNDING OFF DIMENSIONS. ANY DIMENSIONS SHOWN ON THIS DRAWING SHALL BE USED TO DETERMINE THE ACTUAL SCALE.



PROJECT NO. 20016-06
SHEET NO. C-12



AERIAL PLAN

CONTRACT No. 6
WATERMAIN EXTENSIONS
EAST - WEST
INTERCONNECT PROJECT - PHASE II
GRAYSON COUNTY WATER DISTRICT

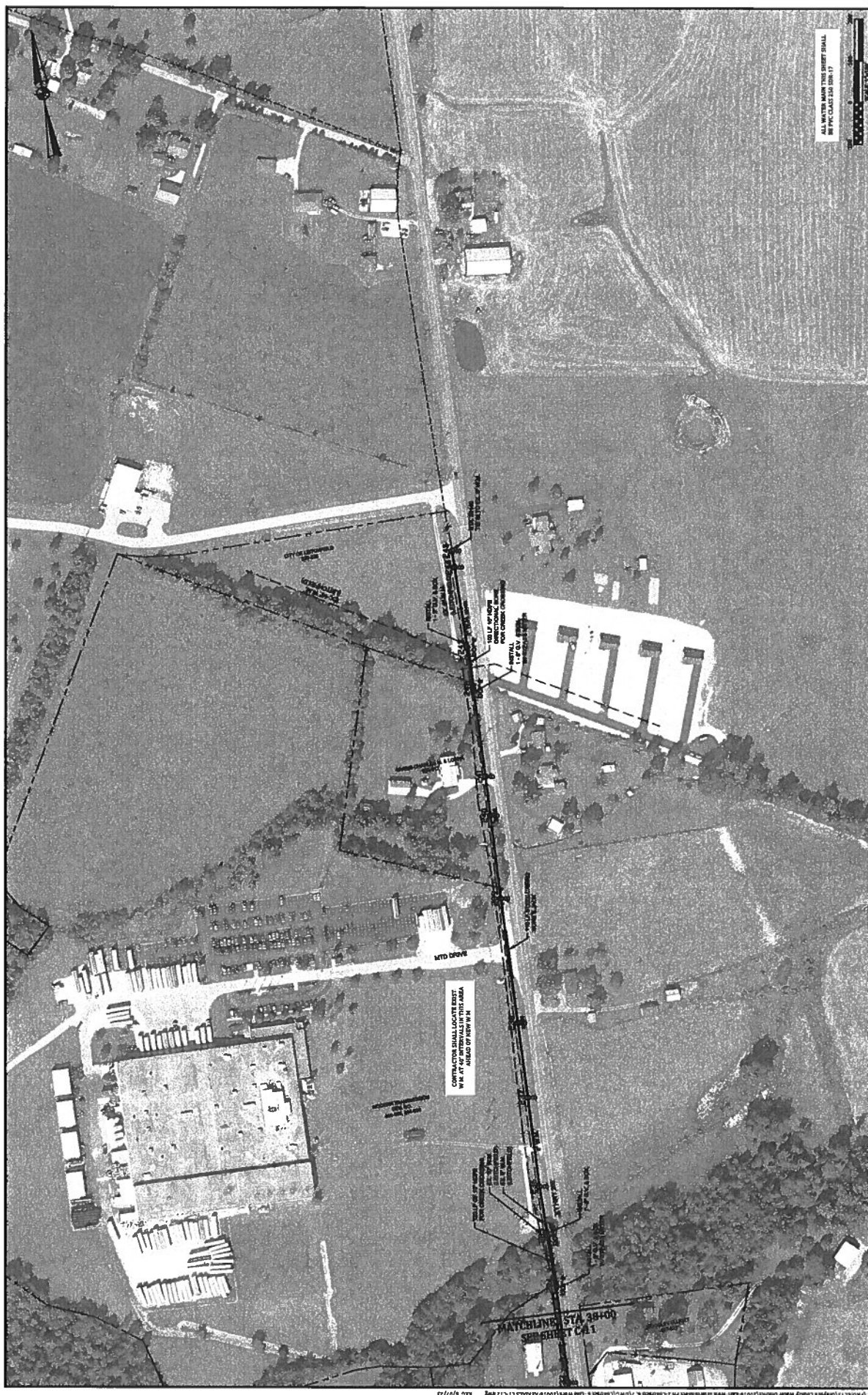


DATE	DICEMBER, 2022	BY	
PROJECT NO.		DATE	
DRAWN BY	JMB	DATE	
CHECKED BY	JCT	DATE	
SCALE	AS NOTED	DATE	

2022 © Kentucky Engineering Group, PLLC

NO.	DATE	REVISIONS	BY

IT IS A VIOLATION OF LAW FOR ANY PERSON TO ALTER THIS DRAWING WITHOUT WRITTEN PERMISSION FROM THE ENGINEER OR ARCHITECT. ANY CHANGES MADE UNDER THE SIGNATURE OF A LICENSED ENGINEER. THIS DRAWING WAS PREPARED AT THE SCALE INDICATED. UNLESS OTHERWISE NOTED, THE SCALE INDICATED IN THE TITLED SCALE BAR IN THE BOTTOM RIGHT CORNER OF THIS DRAWING IS TO BE USED TO DETERMINE THE DIMENSIONS.



PROJECT NO. 2016-06
 SHEET NO. C-13



AERIAL PLAN

CONTRACT No. 6
WATERMAIN EXTENSIONS
EAST - WEST
INTERCONNECT PROJECT - PHASE II
GRAYSON COUNTY WATER DISTRICT

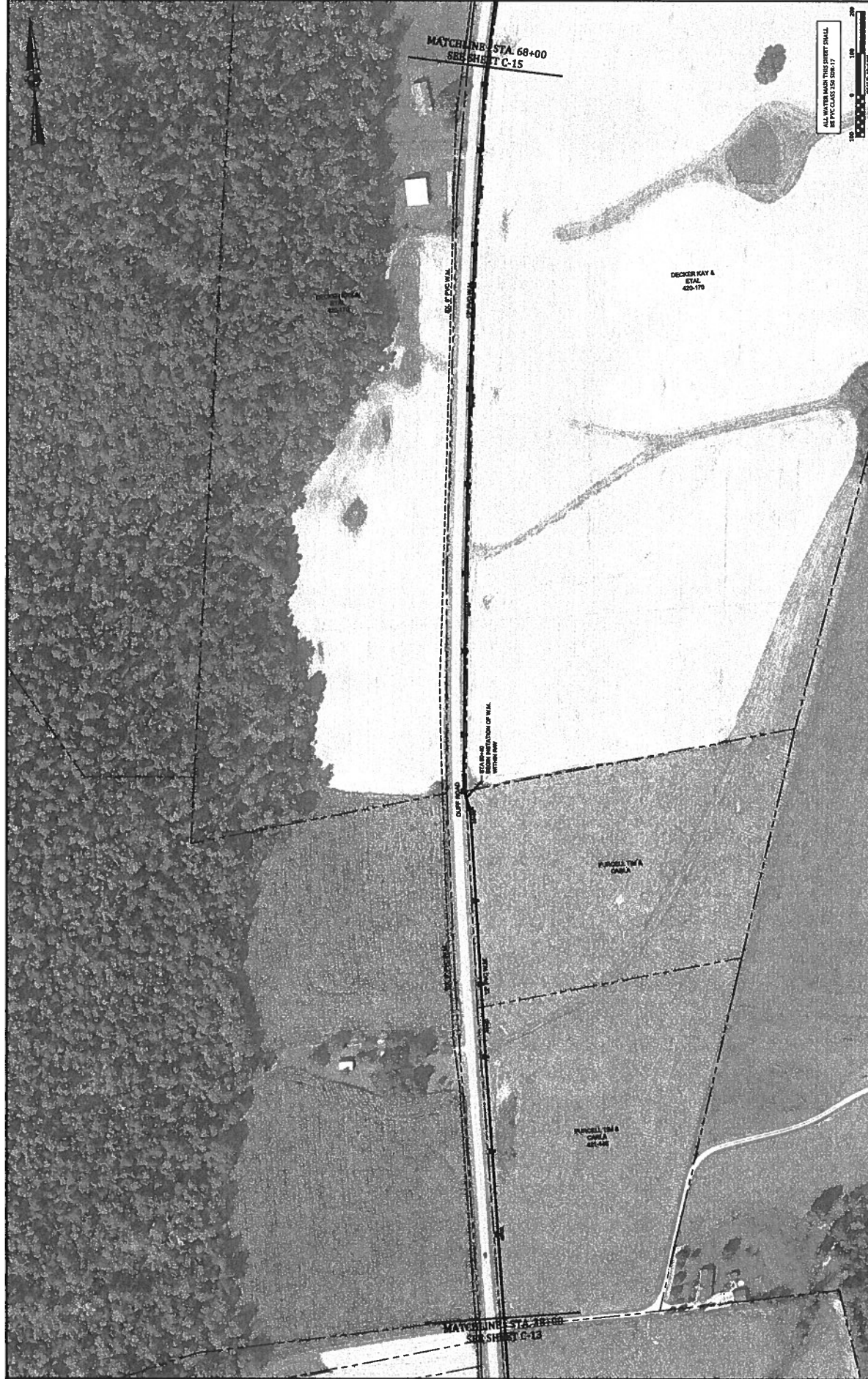


DATE: DECEMBER, 2022
 PROJECT NO.: 2016-06
 DRAWN BY: JAM
 CHECKED BY: JCT
 SCALE: AS SHOWN
 2022 © Kentucky Engineering Group, PLLC

NO.	DATE	REVISIONS	BY

IT IS A VIOLATION OF LAW FOR ANY PERSON TO ALTER THIS DRAWING WITHOUT WRITTEN PERMISSION FROM THE ENGINEER OF RECORD OR ANY OTHER PERSON ACTING UNDER THE DIRECTION OF A LICENSED ENGINEER. THIS DRAWING WAS PREPARED AS THE SCALE INDICATED. DIMENSIONS IN THE STATED SCALE MAY BE APPROXIMATE AND DIMENSIONS SHALL BE DETERMINED BY MEASUREMENT OF THE ORIGINAL DRAWING OR TITLE BLOCK TO DETERMINE THE ACTUAL SCALE.





PROJECT NO. 20016-06
SHEET NO. C-14

AERIAL PLAN

**CONTRACT No. 6
WATERMAIN EXTENSIONS
EAST - WEST
INTERCONNECT PROJECT - PHASE II
GRAYSON COUNTY WATER DISTRICT**

P.O. Box 1034
VERSAILLES, KENTUCKY 40383

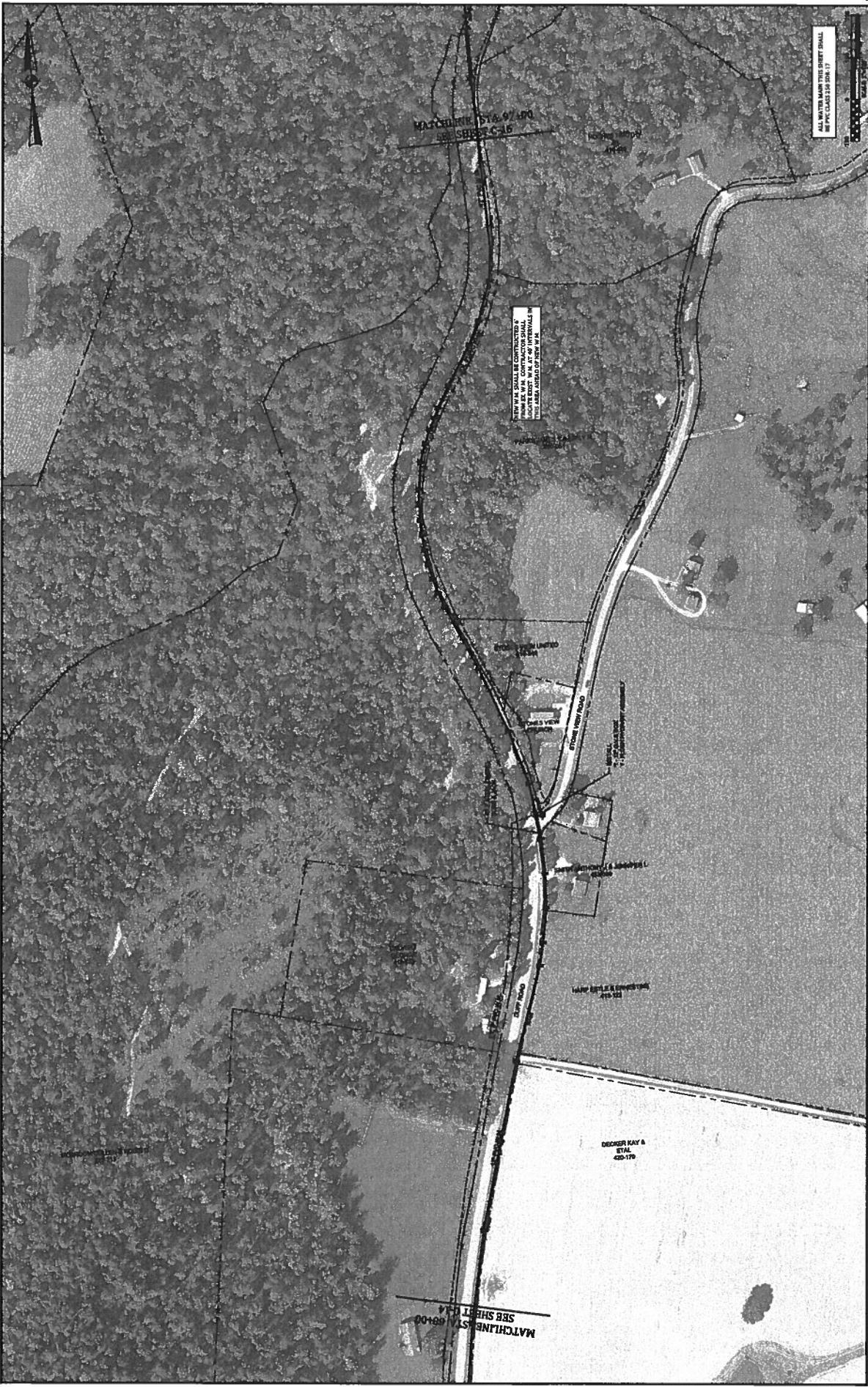
**KENTUCKY
ENGINEERING
GROUP, PLLC**

DATE	DECEMBER, 2021
PROJECT NO.	RET
DRAWN BY	JMP
CHECKED BY	ICT
SCALE	AS NOTED

2021 © Kentucky Engineering Group, PLLC

NO.	DATE	REVISIONS	BY

IT IS A VIOLATION OF LAW FOR ANY PERSON TO ALTER THIS DRAWING WITHOUT WRITTEN PERMISSION FROM THE ENGINEER OR ARCHITECT OR TO REPRODUCE OR TRANSMIT IN ANY FORM OR BY ANY MEANS, ELECTRONIC OR MECHANICAL, INCLUDING PHOTOCOPYING, RECORDING, OR BY ANY INFORMATION STORAGE AND RETRIEVAL SYSTEM, WITHOUT THE WRITTEN PERMISSION OF THE ENGINEER OR ARCHITECT. THIS DRAWING WAS PREPARED AT THE SCALE INDICATED. INACCURACIES IN THIS STATED SCALE MAY BE THE RESULT OF ROUNDING OFF OR OTHER MATH ERRORS. BY ANY MEANS, USE THE GRAPHIC SCALE SHOWN IN THIS DRAWING OR TITLE BLOCK TO DETERMINE THE ACTUAL SCALE.



PROJECT NO. 20016-06
SHEET NO. C-15



AERIAL PLAN

CONTRACT No. 6
WATERMAIN EXTENSIONS
EAST - WEST
INTERCONNECT PROJECT - PHASE II
GRAYSON COUNTY WATER DISTRICT



DATE	DECEMBER 8, 2022
PROJECT NO.	RET
DRAWN BY	JAM
CHECKED BY	ECT
SCALE	AS NOTED
12222 Kentucky Engineering Group, PLLC	

NO.	DATE	REVISIONS	BY

IT IS A VIOLATION OF LAW FOR ANY PERSON TO ALTER THIS DRAWING WITHOUT WRITTEN PERMISSION FROM THE ENGINEER OF RECORD. ANY CHANGES MADE TO THIS DRAWING MUST BE MADE AT THE SCALE INDICATED. REVISIONS IN THE STATED SCALE MAY BE MADE ONLY BY THE ENGINEER OF RECORD. ANY CHANGES TO THE DRAWING OR TITLE BLOCK TO DETERMINE THE ACTING SCALE.

MATCHLINE STA. 97+00
SEE SHEET C-15

NEW W.M. SHALL BE CONTRACTED & INSTALLED IN ACCORDANCE WITH THE STANDARD SPECIFICATIONS FOR WATER MAINS AND APPURTENANCES, LATEST EDITION, WITH 48" INTERVALS BY THE AREA IN CHARGE OF NEW W.M.

ALL WATER MAIN THIS SHEET SHALL BE 12" PVC CLASS 150 (EN 17)

MATCHLINE STA. 49+00
SEE SHEET C-14

PROJECT NO. 20016-06
SHEET NO. C-16



AERIAL PLAN

**CONTRACT No. 6
WATERMAIN EXTENSIONS
EAST - WEST
INTERCONNECT PROJECT - PHASE II
GRAYSON COUNTY WATER DISTRICT**



DATE:	DECEMBER, 2022
PROJECT NO.:	20016-06
DRAWN BY:	JAR
CHECKED BY:	JCT
SCALE:	AS SHOWN

NO.	DATE	REVISIONS	BY

IT IS THE USER'S RESPONSIBILITY TO VERIFY THE ACCURACY OF ALL DATA AND INFORMATION PROVIDED TO THE ENGINEER. THE ENGINEER SHALL NOT BE RESPONSIBLE FOR ANY ERRORS OR OMISSIONS IN THIS DRAWING. THE ENGINEER SHALL NOT BE RESPONSIBLE FOR ANY ERRORS OR OMISSIONS IN THIS DRAWING. THE ENGINEER SHALL NOT BE RESPONSIBLE FOR ANY ERRORS OR OMISSIONS IN THIS DRAWING.



ALL WATER MAIN THIS SHEET SHALL BE PVC CLASS 200 SDR 17

ALL WATER MAIN THIS SHEET SHALL BE PVC CLASS 200 SDR 17



NO. 100 SHALL BE CONTRACTED BY
 THE CONTRACTOR SHALL
 BE THE RESPONSIBILITY OF THE
 CONTRACTOR TO VERIFY THE
 LOCATION OF ALL UTILITIES
 PRIOR TO CONSTRUCTION.

ALL WATER MAIN THIS SHEET SHALL
 BE PPE CLASSIFIED PER 17

PROJECT NO. 20016-06
 SHEET NO. C-17



AERIAL PLAN

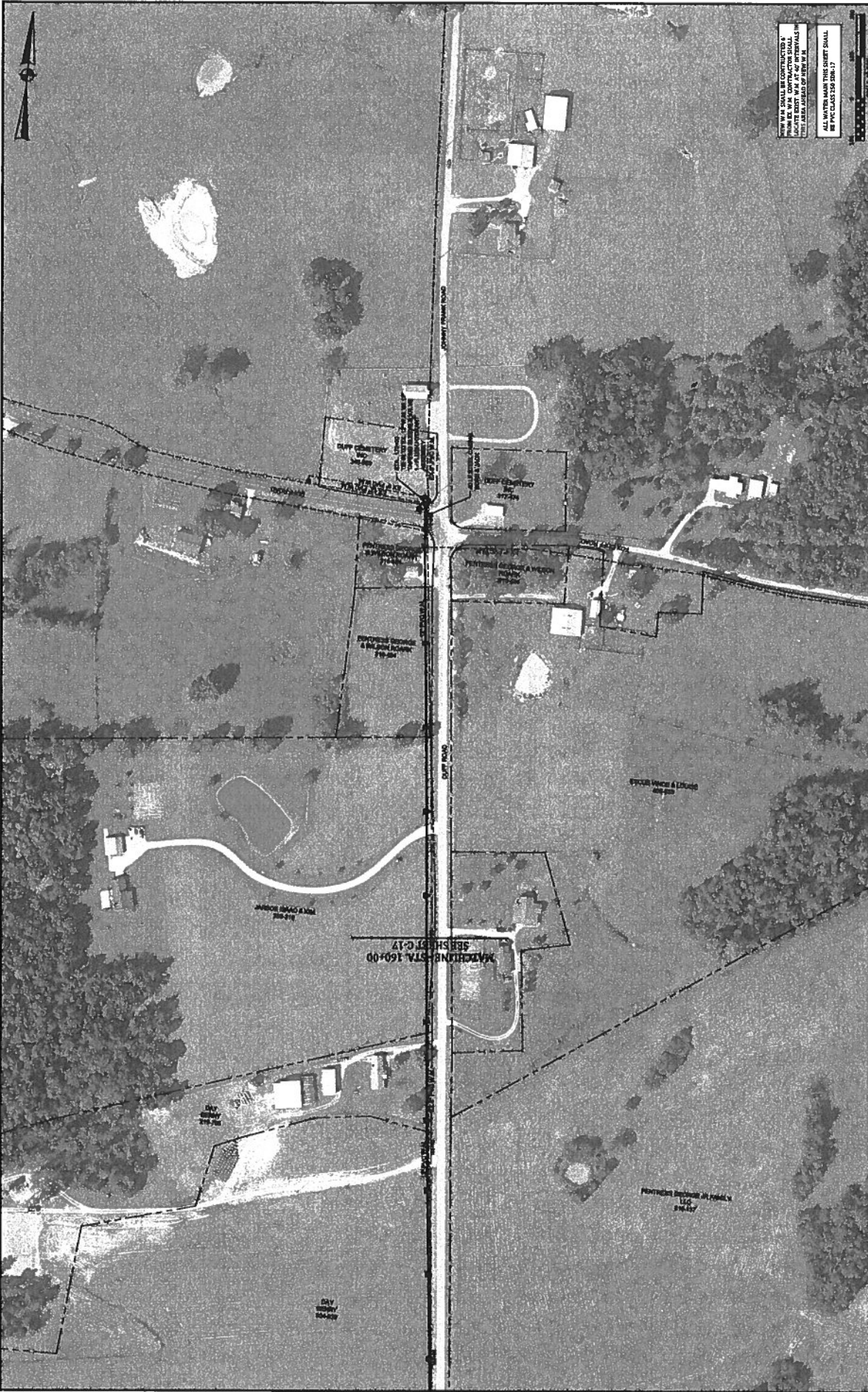
**CONTRACT No. 6
 WATERMAIN EXTENSIONS
 EAST - WEST
 INTERCONNECT PROJECT - PHASE II
 GRAYSON COUNTY WATER DISTRICT**



DATE:	DECEMBER 2022
PROJECT M.C.A.:	RET
DRAWN BY:	JAM
CHECKED BY:	JCT
SCALE:	AS SHOWN
2022 © Kentuckiana Engineering Group, PLLC	

NO.	DATE	REVISIONS	BY

IT IS THE RESPONSIBILITY OF THE USER OF THIS DRAWING TO OBTAIN THE NECESSARY PERMISSIONS FROM THE PROPERTY OWNERS AND ALL OTHER AFFECTED PARTIES PRIOR TO CONSTRUCTION. THE CONTRACTOR SHALL BE RESPONSIBLE FOR VERIFYING THE LOCATION OF ALL UTILITIES PRIOR TO CONSTRUCTION. THE CONTRACTOR SHALL BE RESPONSIBLE FOR OBTAINING ALL NECESSARY PERMITS AND APPROVALS PRIOR TO CONSTRUCTION. THE CONTRACTOR SHALL BE RESPONSIBLE FOR OBTAINING ALL NECESSARY INSURANCE COVERAGE PRIOR TO CONSTRUCTION. THE CONTRACTOR SHALL BE RESPONSIBLE FOR OBTAINING ALL NECESSARY ACCESS TO THE PROJECT SITE PRIOR TO CONSTRUCTION. THE CONTRACTOR SHALL BE RESPONSIBLE FOR OBTAINING ALL NECESSARY ACCESS TO THE PROJECT SITE PRIOR TO CONSTRUCTION. THE CONTRACTOR SHALL BE RESPONSIBLE FOR OBTAINING ALL NECESSARY ACCESS TO THE PROJECT SITE PRIOR TO CONSTRUCTION.



THIS DRAWING SHALL BE CONSIDERED A CONTRACT DOCUMENT ONLY. THE CONTRACTOR SHALL BE RESPONSIBLE FOR VERIFYING THE ACCURACY OF ALL INFORMATION SHOWN ON THIS DRAWING. ALL WATER MAIN THIS SHEET SHALL BE 150mm DIAMETER UNLESS OTHERWISE NOTED.

PROJECT NO. 20016-06
SHEET NO. C-18



AERIAL PLAN

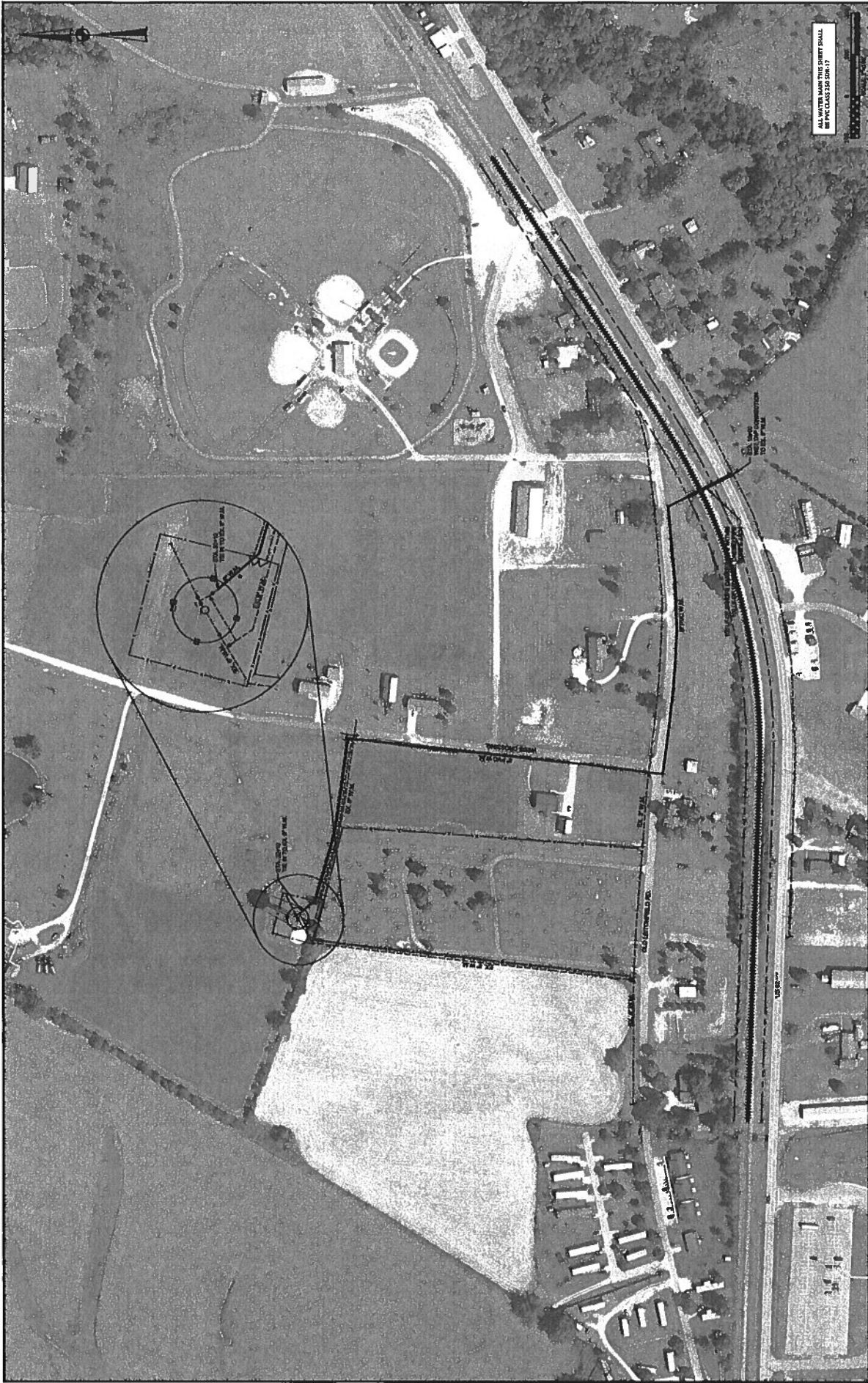
**CONTRACT No. 6
WATERMAIN EXTENSIONS
EAST - WEST
INTERCONNECT PROJECT - PHASE II
GRAYSON COUNTY WATER DISTRICT**



DATE: DECEMBER 1922
PROJECT NO.: 40883
DRAWN BY: JAM
CHECKED BY: JCT
SCALE: AS NOTED
2022 © Kentucky Engineering Group, Inc.

NO.	DATE	REVISIONS	BY

IT IS A VIOLATION OF LAW FOR ANY PERSON TO ALTER THIS DRAWING WITHOUT WRITTEN PERMISSION FROM THE ENGINEER OR ARCHITECT. ANY SUCH ALTERATIONS UNDER THE DIRECTION OF A LICENSED ENGINEER OR ARCHITECT SHALL BE AT THE RISK OF THE ALTERER. THIS DRAWING WAS PREPARED AT THE SCALE INDICATED. INCORPORATIONS IN THIS SCALE MAY BE MADE BY ANY MEANS. USE THE GRAPHIC SCALE BAR IN THE TITLE BLOCK TO DETERMINE THE ACTUAL SCALE.



ALL WATER MAIN THIS SHEET SHALL
BE PVC CLASS 35 SR-17

PROJECT NO. 20016-06
SHEET NO. C-19



AERIAL PLAN
CLARKSON TANK
CONNECTION

CONTRACT No. 6
WATERMAIN EXTENSIONS
EAST - WEST
INTERCONNECT PROJECT - PHASE II
GRAYSON COUNTY WATER DISTRICT

1000 S. BOWLING GREEN
FRENCHBURG, KY 40304
KENTUCKY ENGINEERING GROUP, PLLC

DATE	DECEMBER, 2022
PROJECT MGR	RET
DRAWN BY	JAR
CHECKED BY	KCT
SCALE	AS SHOWN
©2022 Kentucky Engineering Group, PLLC	

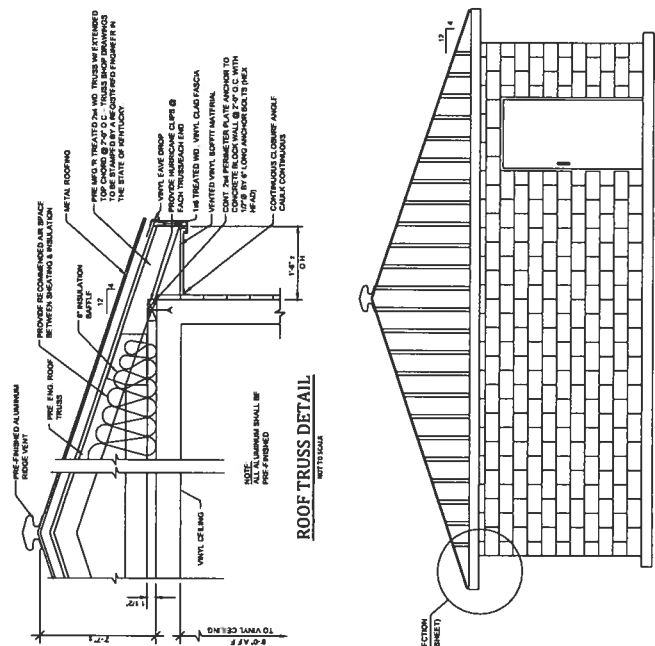
NO.	DATE	EXTENSIONS	BY

THIS DRAWING IS THE PROPERTY OF KENTUCKY ENGINEERING GROUP, PLLC. IT IS TO BE USED ONLY FOR THE PROJECT AND SITE SPECIFIC TO WHICH IT WAS PREPARED. ANY REPRODUCTION OR DISTRIBUTION OF THIS DRAWING WITHOUT WRITTEN PERMISSION FROM KENTUCKY ENGINEERING GROUP, PLLC, IS STRICTLY PROHIBITED. ANY REPRODUCTION OR DISTRIBUTION OF THIS DRAWING WITHOUT WRITTEN PERMISSION FROM KENTUCKY ENGINEERING GROUP, PLLC, IS STRICTLY PROHIBITED. ANY REPRODUCTION OF THIS DRAWING SHALL BE AT THE USER'S RISK. UNLESS INDICATED OTHERWISE, DIMENSIONS IN THIS DRAWING ARE IN FEET AND INCHES. UNLESS INDICATED OTHERWISE, DIMENSIONS IN THIS DRAWING ARE IN FEET AND INCHES. UNLESS INDICATED OTHERWISE, DIMENSIONS IN THIS DRAWING ARE IN FEET AND INCHES. UNLESS INDICATED OTHERWISE, DIMENSIONS IN THIS DRAWING ARE IN FEET AND INCHES.

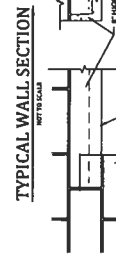
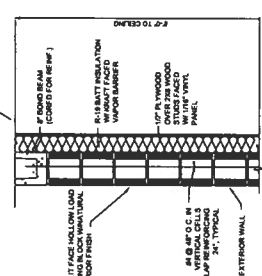
DATE	DECEMBER 2022
PROJECT FILE	
DRAWN BY	JAM
CHECKED BY	JCT
SCALE	AS NOTED

NO.	DATE	REVISIONS	BY
1	01/20/23	ADDRESSING NO. 1	JCT

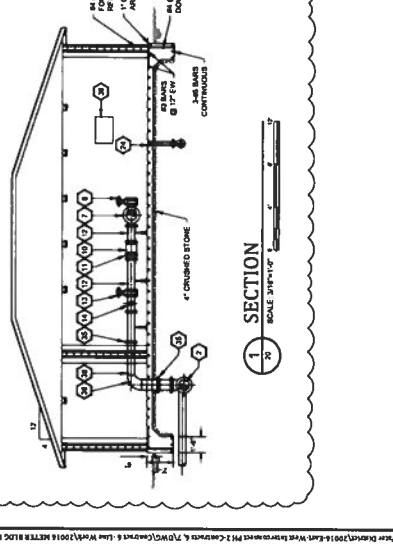
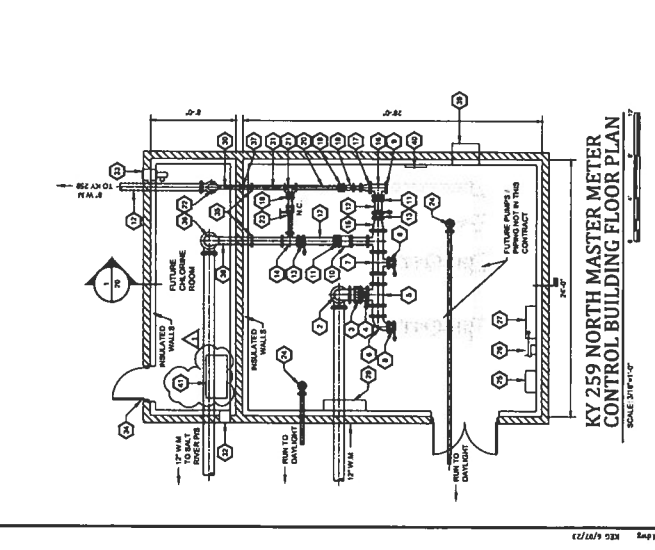
IT IS A VIOLATION OF LAW FOR ANY PERSON TO ALTER THIS DRAWING WITHOUT WRITTEN PERMISSION FROM THE ENGINEER. ANY CHANGES TO THIS DRAWING MUST BE MADE IN THE MARGIN OR BY ADDING A TITLE BLOCK TO DETERMINE THE ACTUAL SCALE.



- TRUSS NOTES:**
1. TRUSS SPACING 24" O.C. UNLESS NOTED OTHERWISE
 2. ROOF TRUSS LOADING 40 PSF
 3. MAXIMUM TOTAL DEFLECTION L/240
 4. IC D.L. 10 PSF
 5. IC S.L. 10 PSF
 6. IC S.L. 10 PSF
 7. ROOF TRUSS MATERIALS SHALL BE SOUTHERN PINE (MIN. GRADE 2)
 8. MAXIMUM TOTAL DEFLECTION L/240
 9. TRUSS MANUFACTURER SHALL BE SURE ALL TEMPORARY AND PERMANENT LATERAL BRACING AND BRACING
 10. STRUCTURAL CONNECTIONS SHALL BE MADE IN ACCORDANCE WITH THE SERVICES OF A REGISTERED PROFESSIONAL ENGINEER. THE ENGINEER SHALL BE RESPONSIBLE FOR THE CORRECT MANUFACTURING OF THE TRUSSES. THE TRUSSES SHALL BE MANUFACTURED TO THE DESIGNER'S SPECIFICATIONS TO THE COMPLETED PROJECT
 11. ALLOWABLE TRUSS SPANS BASED UPON METAL PLATE CONNECTED WOOD TRUSSES (TP-24)
 12. RECOMMENDED DESIGN PRACTICE BY THE TRUSS MANUFACTURER



- REFERENCE NOTES:**
1. 1/2" O.D. PIPE
 2. 1/2" O.D. ELBOW
 3. 1/2" O.D. FLANGE COUPLING ADAPTER
 4. 1/2" O.D. VALVE
 5. 1/2" O.D. TEE
 6. 1/2" O.D. REDUCING
 7. 1/2" O.D. TEE
 8. 1/2" O.D. TEE
 9. 1/2" O.D. TEE
 10. 1/2" O.D. TEE
 11. 1/2" O.D. TEE
 12. 1/2" O.D. TEE
 13. 1/2" O.D. TEE
 14. 1/2" O.D. TEE
 15. 1/2" O.D. TEE
 16. 1/2" O.D. TEE
 17. 1/2" O.D. TEE
 18. 1/2" O.D. TEE
 19. 1/2" O.D. TEE
 20. 1/2" O.D. TEE
 21. 1/2" O.D. TEE
 22. 1/2" O.D. TEE
 23. 1/2" O.D. TEE
 24. 1/2" O.D. TEE
 25. 1/2" O.D. TEE
 26. 1/2" O.D. TEE
 27. TELEMETRY PANEL TO BE INSTALLED, WIRED AND OPERATED BY A QUALIFIED ELECTRICIAN
 28. 1/2" O.D. TEE
 29. 1/2" O.D. TEE
 30. 1/2" O.D. TEE
 31. 1/2" O.D. TEE
 32. 1/2" O.D. TEE
 33. 1/2" O.D. TEE
 34. 1/2" O.D. TEE
 35. 1/2" O.D. TEE
 36. 1/2" O.D. TEE
 37. 1/2" O.D. TEE
 38. 1/2" O.D. TEE
 39. 1/2" O.D. TEE
 40. 1/2" O.D. TEE
 41. 1/2" O.D. TEE
 42. 1/2" O.D. TEE
 43. 1/2" O.D. TEE
 44. 1/2" O.D. TEE
 45. 1/2" O.D. TEE
 46. 1/2" O.D. TEE
 47. 1/2" O.D. TEE
 48. 1/2" O.D. TEE
 49. 1/2" O.D. TEE
 50. 1/2" O.D. TEE
 51. 1/2" O.D. TEE
 52. 1/2" O.D. TEE
 53. 1/2" O.D. TEE
 54. 1/2" O.D. TEE
 55. 1/2" O.D. TEE
 56. 1/2" O.D. TEE
 57. 1/2" O.D. TEE
 58. 1/2" O.D. TEE
 59. 1/2" O.D. TEE
 60. 1/2" O.D. TEE
 61. 1/2" O.D. TEE
 62. 1/2" O.D. TEE
 63. 1/2" O.D. TEE
 64. 1/2" O.D. TEE
 65. 1/2" O.D. TEE
 66. 1/2" O.D. TEE
 67. 1/2" O.D. TEE
 68. 1/2" O.D. TEE
 69. 1/2" O.D. TEE
 70. 1/2" O.D. TEE
 71. 1/2" O.D. TEE
 72. 1/2" O.D. TEE
 73. 1/2" O.D. TEE
 74. 1/2" O.D. TEE
 75. 1/2" O.D. TEE
 76. 1/2" O.D. TEE
 77. 1/2" O.D. TEE
 78. 1/2" O.D. TEE
 79. 1/2" O.D. TEE
 80. 1/2" O.D. TEE
 81. 1/2" O.D. TEE
 82. 1/2" O.D. TEE
 83. 1/2" O.D. TEE
 84. 1/2" O.D. TEE
 85. 1/2" O.D. TEE
 86. 1/2" O.D. TEE
 87. 1/2" O.D. TEE
 88. 1/2" O.D. TEE
 89. 1/2" O.D. TEE
 90. 1/2" O.D. TEE
 91. 1/2" O.D. TEE
 92. 1/2" O.D. TEE
 93. 1/2" O.D. TEE
 94. 1/2" O.D. TEE
 95. 1/2" O.D. TEE
 96. 1/2" O.D. TEE
 97. 1/2" O.D. TEE
 98. 1/2" O.D. TEE
 99. 1/2" O.D. TEE
 100. 1/2" O.D. TEE
 101. 1/2" O.D. TEE
 102. 1/2" O.D. TEE
 103. 1/2" O.D. TEE
 104. 1/2" O.D. TEE
 105. 1/2" O.D. TEE
 106. 1/2" O.D. TEE
 107. 1/2" O.D. TEE
 108. 1/2" O.D. TEE
 109. 1/2" O.D. TEE
 110. 1/2" O.D. TEE
 111. 1/2" O.D. TEE
 112. 1/2" O.D. TEE
 113. 1/2" O.D. TEE
 114. 1/2" O.D. TEE
 115. 1/2" O.D. TEE
 116. 1/2" O.D. TEE
 117. 1/2" O.D. TEE
 118. 1/2" O.D. TEE
 119. 1/2" O.D. TEE
 120. 1/2" O.D. TEE
 121. 1/2" O.D. TEE
 122. 1/2" O.D. TEE
 123. 1/2" O.D. TEE
 124. 1/2" O.D. TEE
 125. 1/2" O.D. TEE
 126. 1/2" O.D. TEE
 127. 1/2" O.D. TEE
 128. 1/2" O.D. TEE
 129. 1/2" O.D. TEE
 130. 1/2" O.D. TEE
 131. 1/2" O.D. TEE
 132. 1/2" O.D. TEE
 133. 1/2" O.D. TEE
 134. 1/2" O.D. TEE
 135. 1/2" O.D. TEE
 136. 1/2" O.D. TEE
 137. 1/2" O.D. TEE
 138. 1/2" O.D. TEE
 139. 1/2" O.D. TEE
 140. 1/2" O.D. TEE
 141. 1/2" O.D. TEE
 142. 1/2" O.D. TEE
 143. 1/2" O.D. TEE
 144. 1/2" O.D. TEE
 145. 1/2" O.D. TEE
 146. 1/2" O.D. TEE
 147. 1/2" O.D. TEE
 148. 1/2" O.D. TEE
 149. 1/2" O.D. TEE
 150. 1/2" O.D. TEE
 151. 1/2" O.D. TEE
 152. 1/2" O.D. TEE
 153. 1/2" O.D. TEE
 154. 1/2" O.D. TEE
 155. 1/2" O.D. TEE
 156. 1/2" O.D. TEE
 157. 1/2" O.D. TEE
 158. 1/2" O.D. TEE
 159. 1/2" O.D. TEE
 160. 1/2" O.D. TEE
 161. 1/2" O.D. TEE
 162. 1/2" O.D. TEE
 163. 1/2" O.D. TEE
 164. 1/2" O.D. TEE
 165. 1/2" O.D. TEE
 166. 1/2" O.D. TEE
 167. 1/2" O.D. TEE
 168. 1/2" O.D. TEE
 169. 1/2" O.D. TEE
 170. 1/2" O.D. TEE
 171. 1/2" O.D. TEE
 172. 1/2" O.D. TEE
 173. 1/2" O.D. TEE
 174. 1/2" O.D. TEE
 175. 1/2" O.D. TEE
 176. 1/2" O.D. TEE
 177. 1/2" O.D. TEE
 178. 1/2" O.D. TEE
 179. 1/2" O.D. TEE
 180. 1/2" O.D. TEE
 181. 1/2" O.D. TEE
 182. 1/2" O.D. TEE
 183. 1/2" O.D. TEE
 184. 1/2" O.D. TEE
 185. 1/2" O.D. TEE
 186. 1/2" O.D. TEE
 187. 1/2" O.D. TEE
 188. 1/2" O.D. TEE
 189. 1/2" O.D. TEE
 190. 1/2" O.D. TEE
 191. 1/2" O.D. TEE
 192. 1/2" O.D. TEE
 193. 1/2" O.D. TEE
 194. 1/2" O.D. TEE
 195. 1/2" O.D. TEE
 196. 1/2" O.D. TEE
 197. 1/2" O.D. TEE
 198. 1/2" O.D. TEE
 199. 1/2" O.D. TEE
 200. 1/2" O.D. TEE



PROJECT NO. 200116-06
SHEET NO. C-21



KY 259 NORTH MASTER METER / CONTROL BUILDING SITE PLAN & DETAILS

CONTRACT No. 6 WATERMAIN EXTENSIONS EAST - WEST INTERCONNECT PROJECT - PHASE II GRAYSON COUNTY WATER DISTRICT

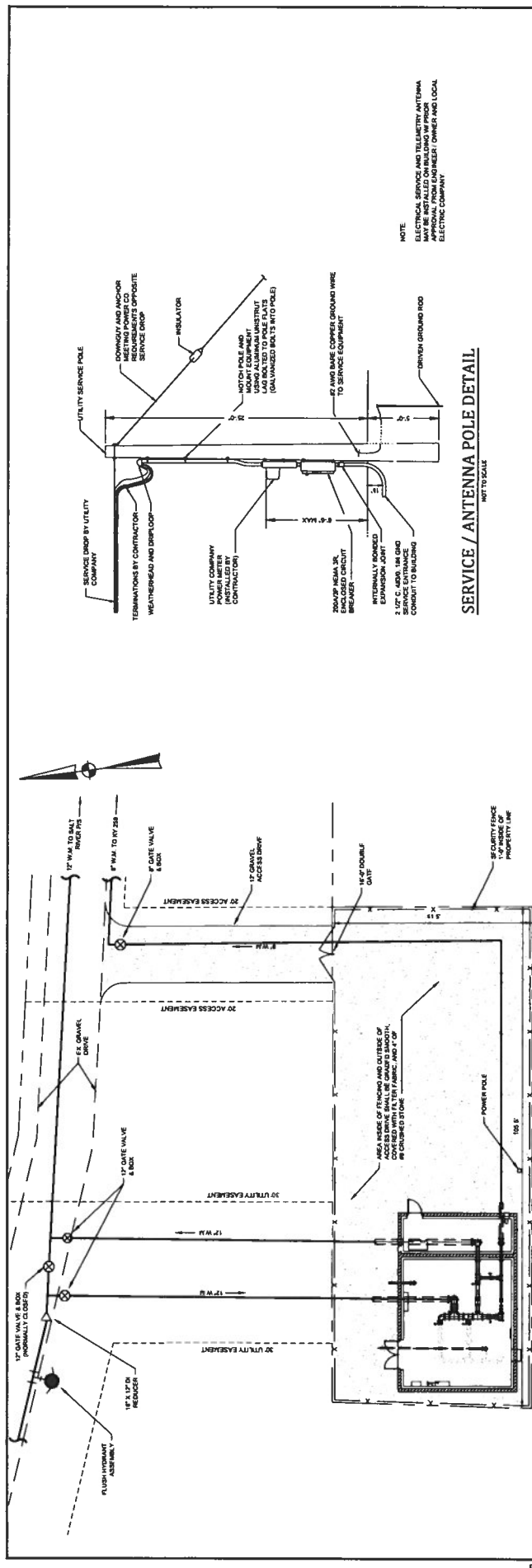


P.O. Box 1034
VERSAILLES, KENTUCKY 40383
KENTUCKIANA ENGINEERING GROUP, INC.

DATE	DECEMBER 11/22
PROJECT NAME	INTERCONNECT PROJECT - PHASE II
DRAWN BY	JAH
CHECKED BY	JCT
SCALE	AS NOTED
2022 Kentucky Engineering Group, Inc.	

NO.	DATE	REVISIONS
1	08/23/23	ADD ROOM NO. 1

IT IS A VIOLATION OF LAW FOR ANY PERSON TO ALTER THIS DRAWING WITHOUT WRITTEN PERMISSION FROM THE ENGINEER OR ARCHITECT. ANY CHANGES INDICATED IN THIS DRAWING SHALL BE MADE BY ANY MEANS USE THE GRAPHIC SCALE BAR IN THE DRAWING OR TITLE BLOCK TO DETERMINE THE ACTUAL SCALE.



SERVICE / ANTENNA POLE DETAIL
NOT TO SCALE

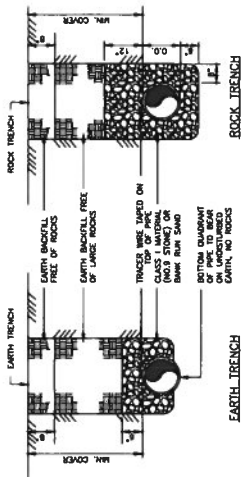
SECURITY FENCE DETAIL
NOT TO SCALE

DOUBLE SWING GATE FENCE DETAIL
NOT TO SCALE

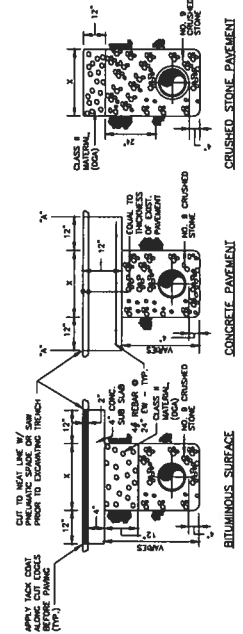
NOTE:
ELECTRICAL SERVICE AND TELEMETRY ANTENNA MAY BE INSTALLED ON BUILDING IF PRIOR APPROVAL IS OBTAINED FROM THE LOCAL ELECTRIC COMPANY.

KY 259 NORTH MASTER METER CONTROL BUILDING
SCALE: 1/4" = 1'-0"

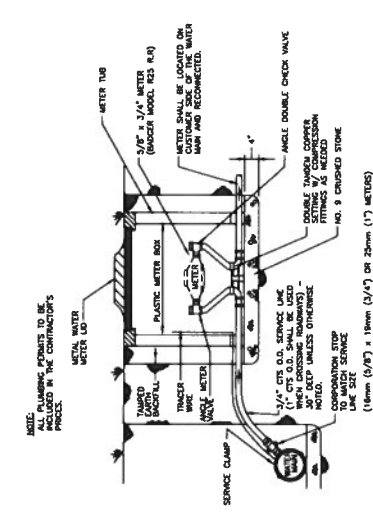
THIS DRAWING WAS PREPARED AT THE SCALE INDICATED. INACCURACIES IN THIS DRAWING MAY BE CAUSED BY ANY MEANS USE THE GRAPHIC SCALE BAR IN THE DRAWING OR TITLE BLOCK TO DETERMINE THE ACTUAL SCALE.



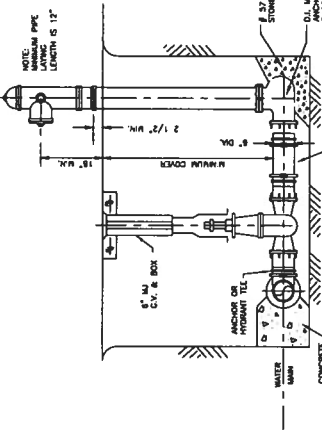
TYPICAL BEDDING and BACKFILL
NOT TO SCALE



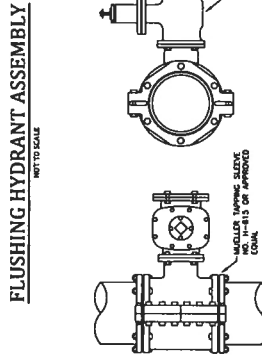
PAVEMENT REPLACEMENT
NOT TO SCALE



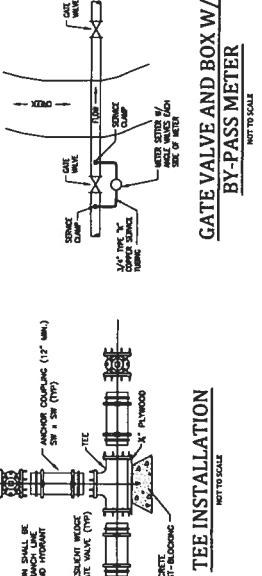
TYPICAL SERVICE CONNECTION
NOT TO SCALE



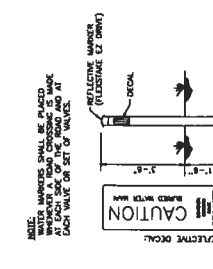
GATE VALVE INSTALLATION
NOT TO SCALE



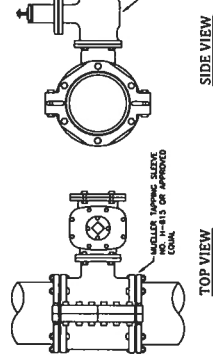
FLUSHING HYDRANT ASSEMBLY
NOT TO SCALE



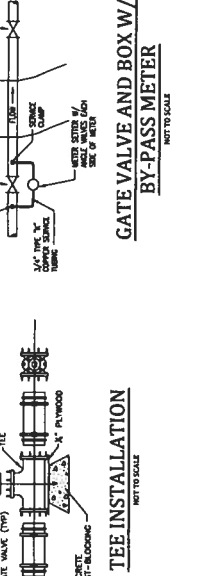
BLOWOFF HYDRANT ASSEMBLY
NOT TO SCALE



WATER MARKER DETAIL
NOT TO SCALE



TYPICAL - WET TAP
NOT TO SCALE



GATE VALVE AND BOX W/
BY-PASS METER
NOT TO SCALE

IF A MODIFICATION OR CHANGE IS REQUIRED TO THE DRAWING WITHOUT WRITTEN PERMISSION FROM THE ENGINEER, THE USER ASSUMES ALL LIABILITY. THE ENGINEER HAS PROVIDED THE SCALE INDICATED IN THIS DRAWING AND IS NOT RESPONSIBLE FOR ANY MODIFICATIONS OR CHANGES TO THE DRAWING. THE USER SHALL BE RESPONSIBLE FOR VERIFYING THE SCALE AND DIMENSIONS OF ALL MATERIALS AND EQUIPMENT TO BE USED IN THE PROJECT.

NO.	DATE	BY	REVISIONS

DATE	DESCRIPTION
DECEMBER 1992	

KENTUCKY ENGINEERING GROUP, PLLC

CONTRACT No. 6
 WATERMAIN EXTENSIONS
 EAST - WEST
 INTERCONNECT PROJECT - PHASE II
 GRAYSON COUNTY WATER DISTRICT

STANDARD DETAILS

PROJECT NO.	20016-06
SHEET NO.	SD-1

PROJECT NO.	20016-06
SHEET NO.	SD-2



STANDARD DETAILS

CONTRACT No. 6
WATERMAIN EXTENSIONS
 EAST - WEST
INTERCONNECT PROJECT - PHASE II
 GRAYSON COUNTY WATER DISTRICT

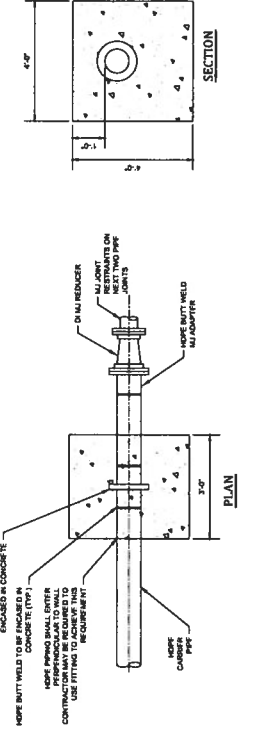


DATE	DECEMBER, 2022
PROJECT NO.	NST
DRAWN BY	JAM
CHECKED BY	RTT
SCALE	AS SHOWN
2022 © VersaLink Engineering Group, LLC	

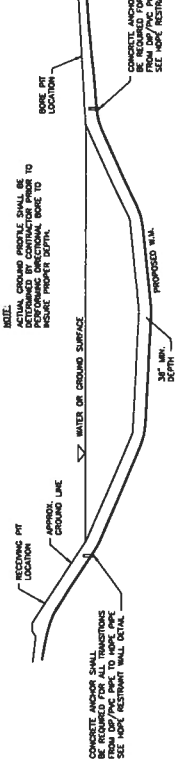
NO.		DATE		BY	
REVISIONS					

IT IS A NEW FORM OF LAW FOR ANY PERSON TO ALTER THIS DRAWING WITHOUT PERMISSION FROM VERSALINK ENGINEERING GROUP, PLLC, AND ACTING AS AGENT FOR VERSALINK ENGINEERING GROUP, PLLC. ANY SUCH ALTERATION SHALL BE AT THE ALTERER'S SOLE RISK AND RESPONSIBILITY. THIS DRAWING WAS PREPARED AT THE SCALE INDICATED. INCREASES IN THE STATED SCALE MAY BE INTRODUCED WITH DRAWINGS AS REPRESENTED HEREIN OR BY ANY OTHER MEANS, AND ANY SUCH ALTERATIONS SHALL BE THE RESPONSIBILITY OF THE DRAWING OR TITLE BLOCK TO DETERMINE THE ACTUAL SCALE.

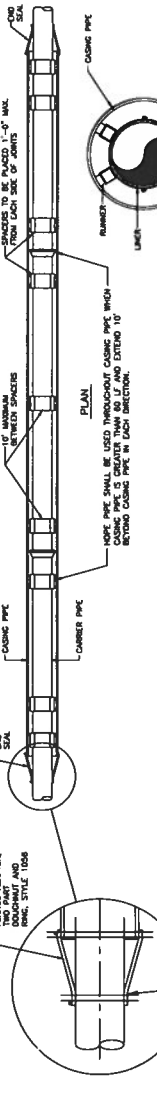
HDPPE RESTRAINT WALL
 NOT TO SCALE



TYPICAL CREEK/SURFACE DIRECTIONAL BORE DETAIL
 NOT TO SCALE



DETAIL 'A' - ENCASUREMENT PIPE SPACER
 NOT TO SCALE



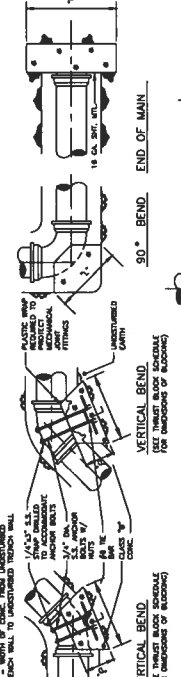
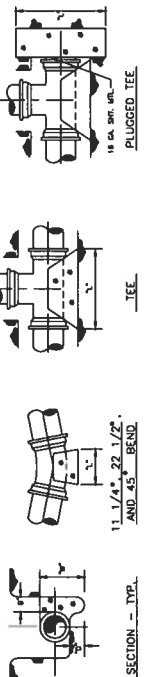
THRUST BLOCK SCHEDULE - CLASS 350 D.I.P.
 NOT TO SCALE

PIPE SIZE	30° BEND		45° BEND		60° BEND		75° BEND		90° BEND		11.1° BEND		11.4° BEND		22.5° BEND		TEE & DEAD ENDS			
	W	L	W	L	W	L	W	L	W	L	W	L	W	L	W	L	W	L		
4"	2.87	10.12	24.18	1.500	.08	12.12	.750	.03	12.12	6.500	.01	6.12	8.1487	.06	12.24	10	15	10.18		
6"	5.000	18.12	38.20	3.000	.11	12.24	1.500	.08	12.18	12.750	.01	8.12	8.4000	.15	12.24	24	24	24		
8"	8.000	50.18	38.20	5.000	.38	18.36	2.000	.17	18.24	18.100	.08	12.18	12.7000	.38	18.42	24	24	24		
10"	8.250	78.18	48.42	7.500	.42	18.36	3.000	.23	18.30	22.500	.08	12.18	10.5000	.58	18.42	36	18	42		
12"	12.372	111.18	80.48	12.000	.47	18.48	3.800	.33	18.36	24.300	.11	12.24	14.0000	.78	18.48	42	48	42		
14"	16.138	2.00	24.72	54.15	15.750	1.17	24.54	.54	42.750	.58	24.36	30.4000	.22	18.24	24	24	20.000	1.48	24.40	48
16"	23.862	2.65	24.78	88.20	20.000	1.48	24.60	.48	10.500	.78	24.42	36.5000	.28	18.30	24	27.000	2.00	24.72	24	

THRUST BLOCK SCHEDULE - CLASS 250 PVC
 SINK TYPE - SAND & GRAVEL
 BEARING STRENGTH = 3000 PSF

PIPE SIZE	30° BEND		45° BEND		60° BEND		75° BEND		90° BEND		11.1° BEND		11.4° BEND		22.5° BEND		TEE & DEAD ENDS			
	W	L	W	L	W	L	W	L	W	L	W	L	W	L	W	L	W	L		
4"	2.87	10.12	24.18	1.500	.08	12.12	.750	.03	12.12	6.500	.01	6.12	8.1487	.06	12.24	10	15	10.18		
6"	5.000	18.12	38.20	3.000	.11	12.24	1.500	.08	12.18	12.750	.01	8.12	8.4000	.15	12.24	24	24	24		
8"	8.000	50.18	38.20	5.000	.38	18.36	2.000	.17	18.24	18.100	.08	12.18	12.7000	.38	18.42	24	24	24		
10"	8.250	78.18	48.42	7.500	.42	18.36	3.000	.23	18.30	22.500	.08	12.18	10.5000	.58	18.42	36	18	42		
12"	12.372	111.18	80.48	12.000	.47	18.48	3.800	.33	18.36	24.300	.11	12.24	14.0000	.78	18.48	42	48	42		
14"	16.138	2.00	24.72	54.15	15.750	1.17	24.54	.54	42.750	.58	24.36	30.4000	.22	18.24	24	24	20.000	1.48	24.40	48
16"	23.862	2.65	24.78	88.20	20.000	1.48	24.60	.48	10.500	.78	24.42	36.5000	.28	18.30	24	27.000	2.00	24.72	24	

SECTION - TYP.
 11.1/4" x 22.1/2"
 AND 45° BEND.



NOTE: ALL FITTINGS AND WAIVES SHALL INCLUDE CAST IRON PIPE CLAMP

1/18/22 - REVISED TO SHOW UNFINISHED TRENCH WALL TO UNFINISHED TRENCH WALL.