

VICINITY MAP
1"=5000'

Contract Drawings For
**Lyon Co. Water District
 Water Quality and System
 Improvements**

**CONTRACT III
 WATER TANK
 IMPROVEMENTS**

Kuttawa, Kentucky

Civil

Project No.
 10205112

Lyon Co., Kentucky
 November 2022

INDEX OF DRAWINGS

GENERAL

00G-01 VICINITY MAP, INDEX, LEGEND AND UTILITY OWNERS

CIVIL

01C-01 LAMASCO TANK
 01C-02 LAMASCO TANK MIXING SYSTEM
 01C-03 LAMASCO TANK ANTI-CORROSION SYSTEM
 01C-04 LAMASCO TANK VALVE VAULT BYPASS IMPROVEMENTS
 01C-05 THOMPSON TANK

LEGEND

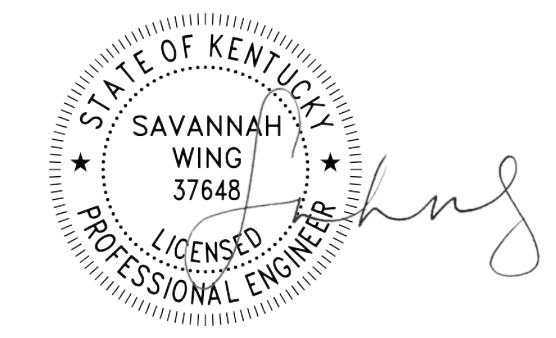
PROPERTY LINE	---	SIGN	⊠	WATER METER (unless otherwise noted)	⊙
RIGHT OF WAY	---	POWER POLE	⊠	HYDRANT	⊕
BENCH MARK	BM.4	TELEPHONE POLE	⊠	GATE VALVE	⊕
R/W MARKER	⊠	UTILITY POLE	⊠	TELEPHONE PEDESTAL	⊕
TREES	30' Oak, 15' Maples	GUY ANCHOR	⊠	TELEPHONE MANHOLE	⊕
STRUCTURES	1 Sty. Frame, Wood Shed	SANITARY MANHOLE	⊠	ELECTRIC MANHOLE	⊕
ROADWAY	Road Name	WATER MAIN	--- WM ---	GAS MAIN	--- CM ---
FENCE	---	TELEPHONE DUCT	---	ELECTRIC DUCT	---
		SANITARY SEWER	---	SAN	---
		STORM SEWER	---	STORM	---

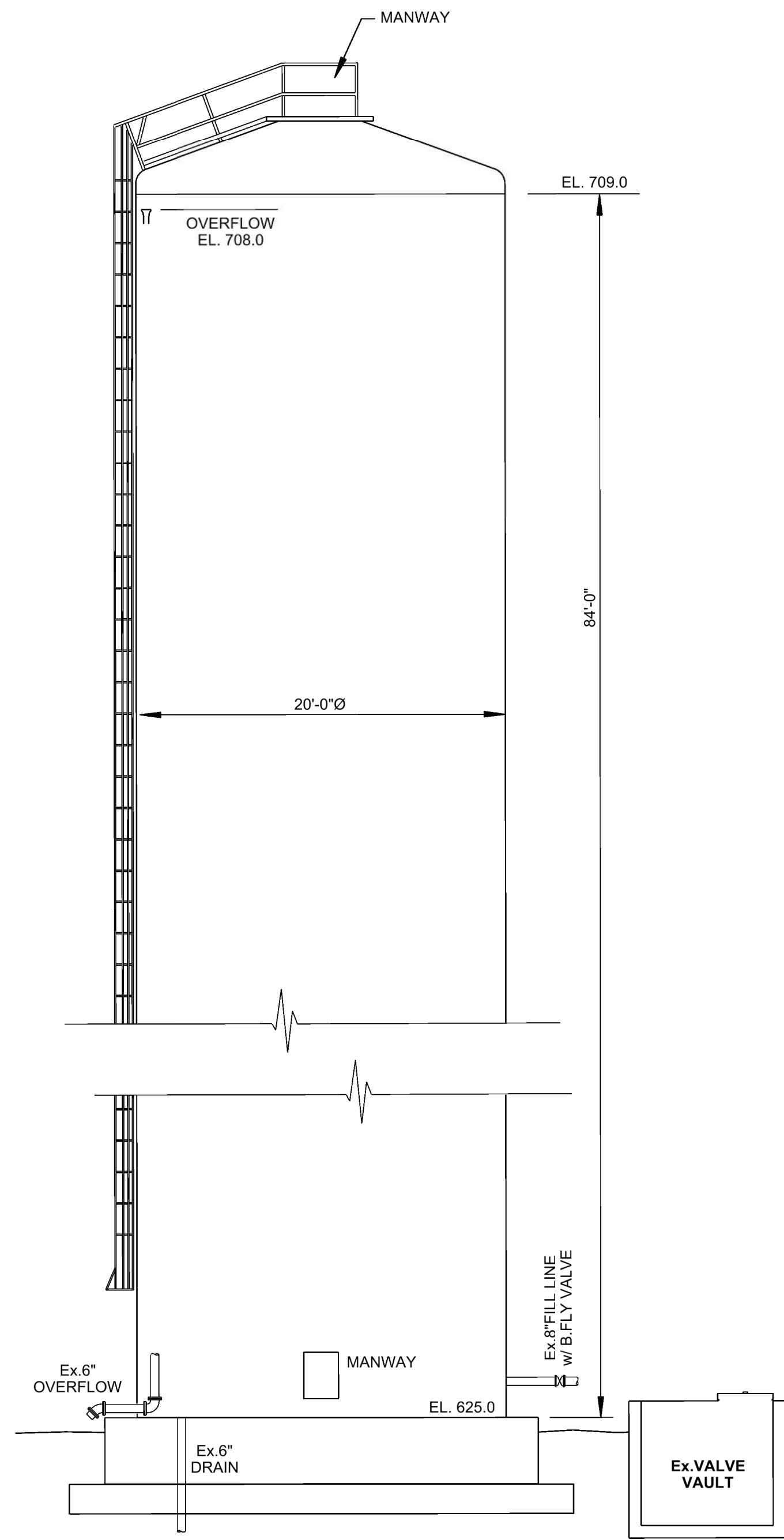
UTILITY OWNERS

A) LYON COUNTY WATER DISTRICT	270-388-0272
B) AT&T	270-210-3563
C) ANR PIPELINE CO.	800-447-8066
B.U.D.	800-752-6007

CALL BID TO HAVE UNDERGROUND UTILITIES LOCATED. PROPER NOTICE MUST BE GIVEN 48 HOURS IN ADVANCE OF INITIATING WORK.

RE-SUBMITTED FOR APPROVAL 11/22

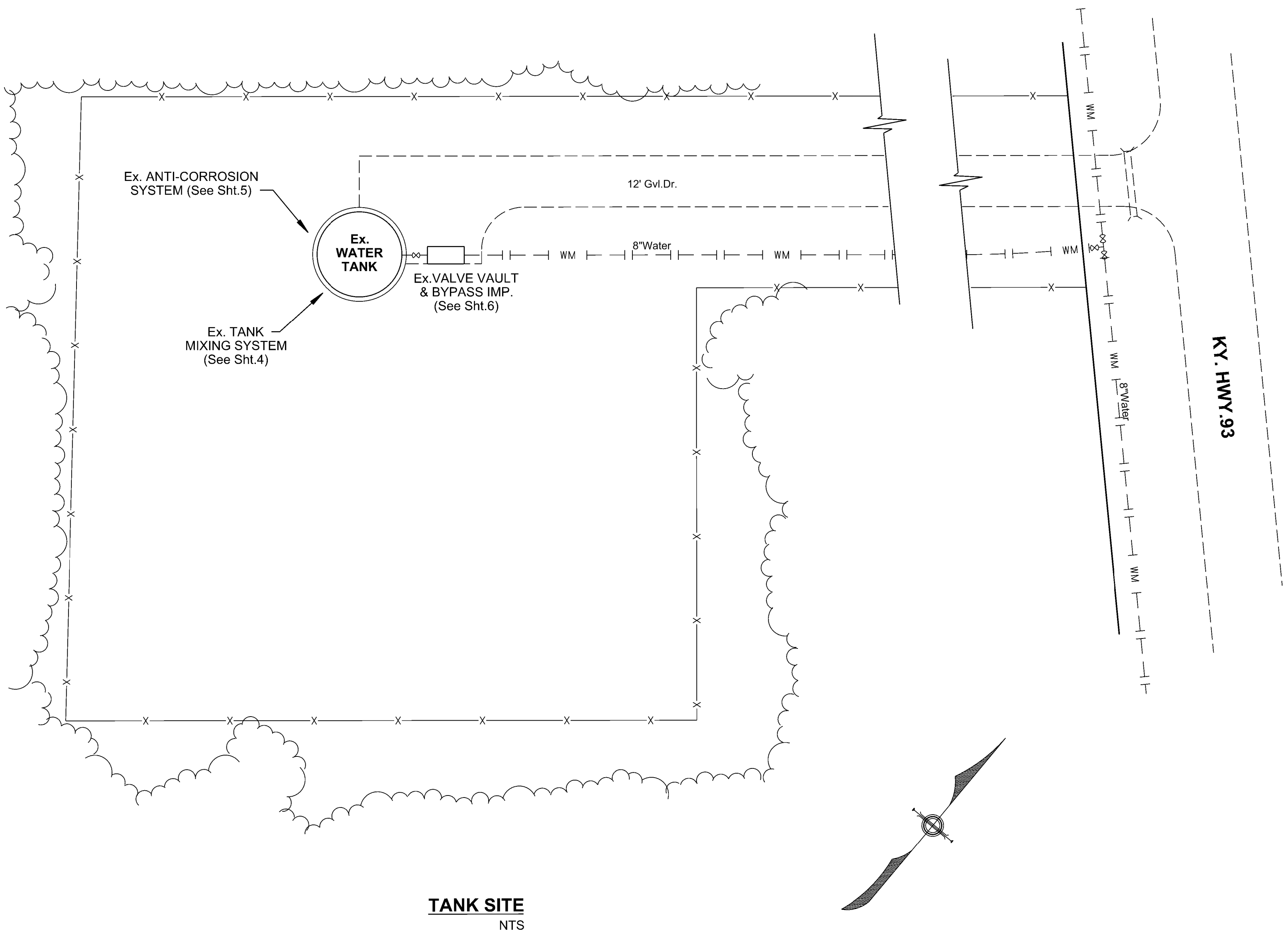




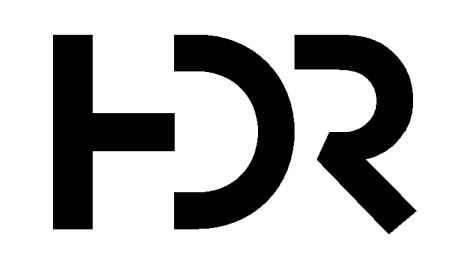
LAMASCO TANK ELEVATION

NOTES:
 CAPACITY = 189,000 GAL.
 MATERIAL = GLASS LINED STEEL
 TYPE = STAND PIPE

- NOTES:
1. GROUT AROUND BASE OF TANK.
 2. REPLACE GASKETS AND BOLTS ON MANWAY.
 3. REPLACE ROOF SCREENS WITH FROST FREE TYPE.
 4. REPLACE SAFETY CLIMBS WITH CABLE TYPE.



TANK SITE
NTS

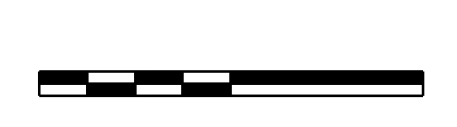


ISSUE	DATE	DESCRIPTION
4	11/22	RE-SUBMITTED FOR APPROVAL
3	5/22	RE-SUBMITTED FOR APPROVAL
2	3/15	RE-SUBMITTED FOR APPROVAL
1	12/12	SUBMITTED FOR APPROVAL

PROJECT MANAGER	M.HANSEN
DRAWN BY	L.LIGHTFOOT
CHECKED BY	B.TIPPEY
PROJECT NUMBER	10205112

**LYON COUNTY
 WATER DISTRICT**
 5464 US.62 W.
 KUTTAWA, KY. 42055

**LCWD WATER QUALITY &
 SYSTEM IMPROVEMENTS
 CONTRACT III - WATER TANK
 IMPROVEMENTS**

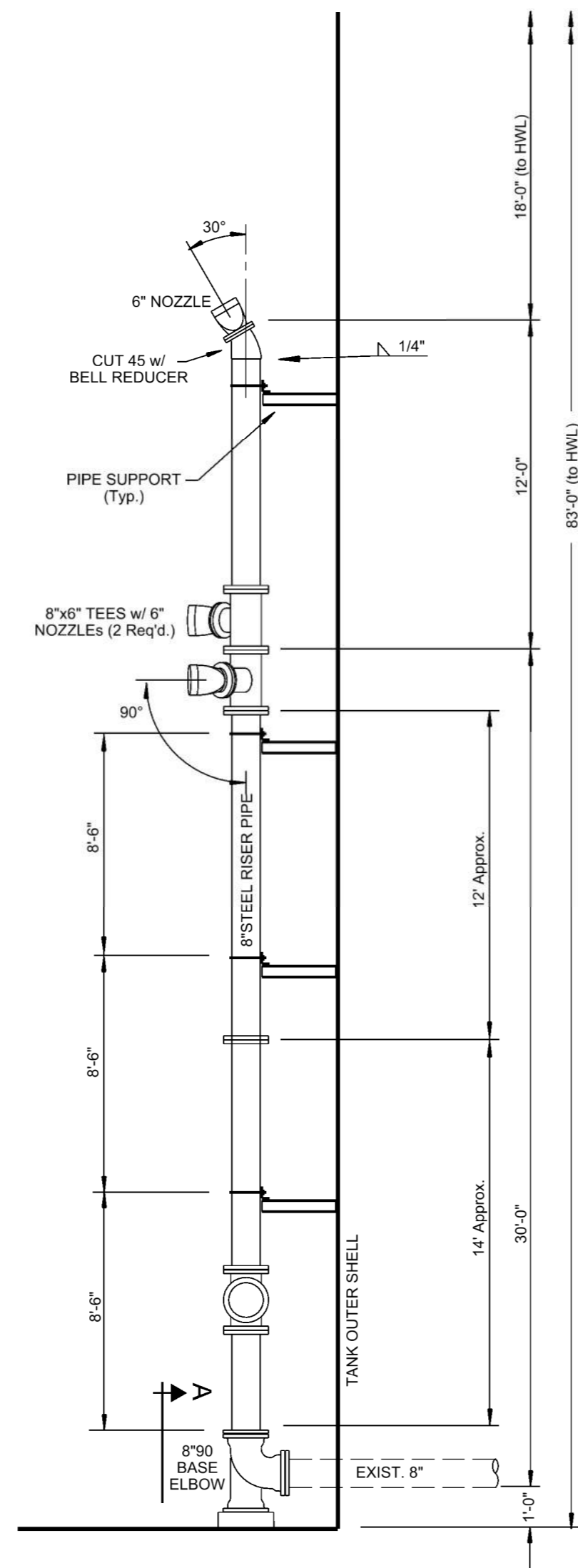


LAMASCO TANK

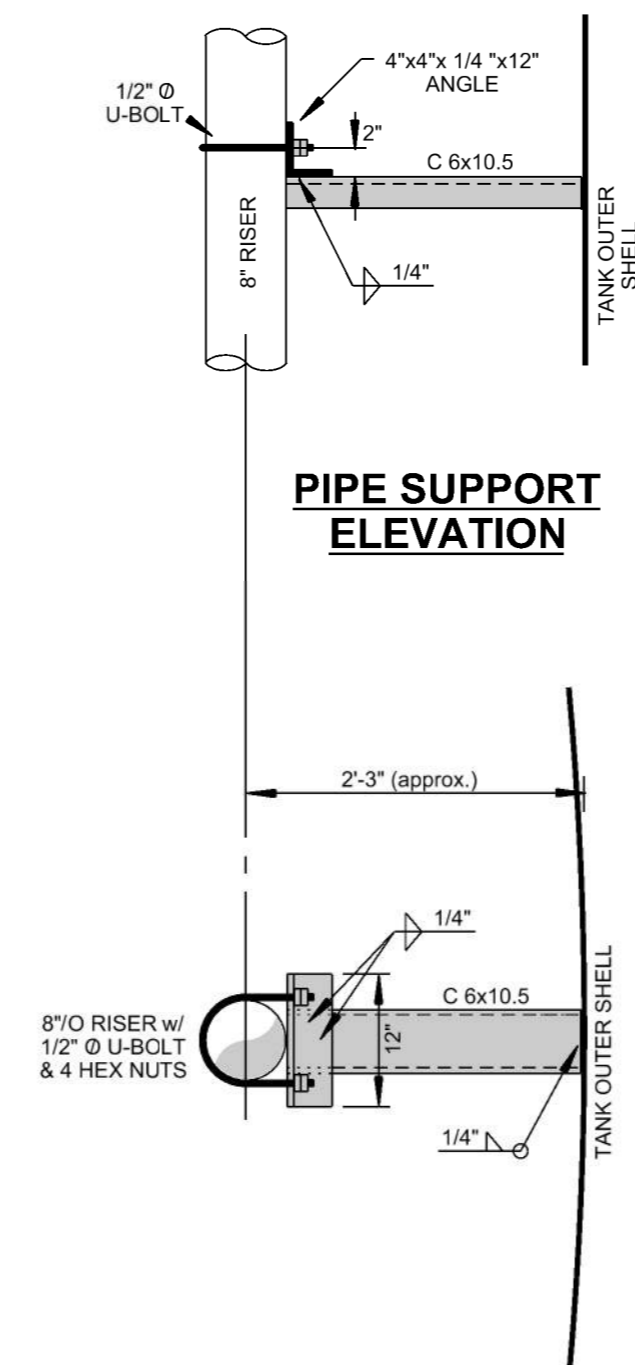
FILENAME | 00C-01 Lamasco
 SCALE | 1"= 6'-0"

SHEET
00C-01

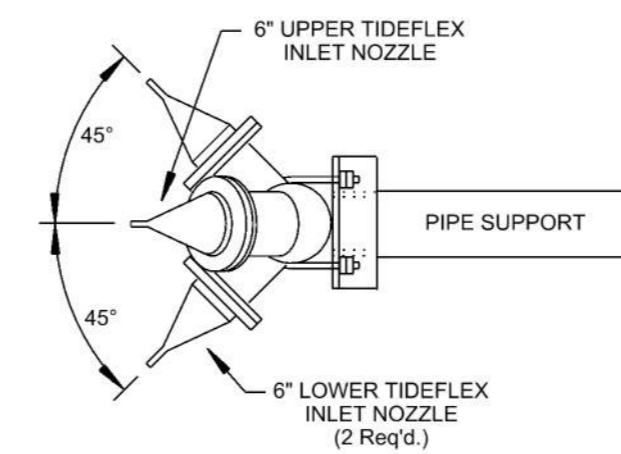
Note:
Tideflex Mixing System
design to be used for each
tank provided at Pre-Bid



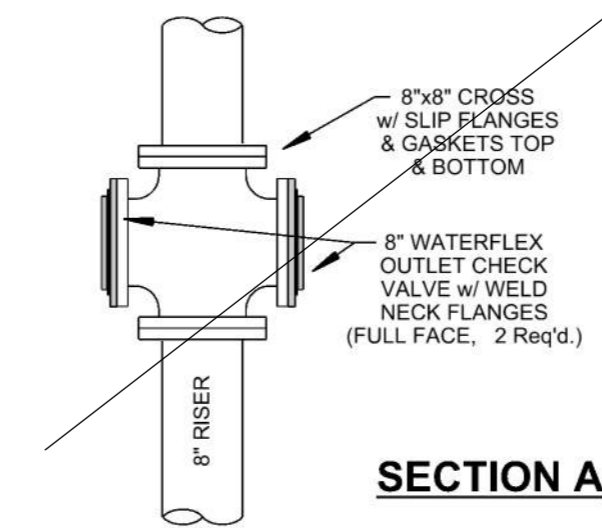
RISER ELEVATION



PIPE SUPPORT ELEVATION



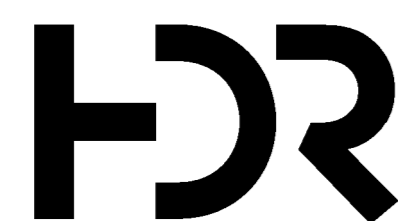
NOZZLE LAYOUT



SECTION A

One check valve at tee facing away from the wall

- NOTES:
- ALL PIPE AND FITTINGS SHALL BE SCH. 40 STEEL.
 - ALL FLANGES SHALL BE WELD NECK (FULL FACE) EXCEPT AT CHECK VALVES. (SEE SECTION A)
 - ALL FLANGES SHALL BE CLASS 150.
 - ALL FLANGE CONNECTIONS SHALL HAVE 1/8" THICK EPDM GASKETS.
 - CARBON STEEL OR STAINLESS STEEL 304 OR 316 HEX HEAD BOLTS AND NUTS SHALL CONFORM TO ANSI/ASME B 18. 2. 1 AND ANSI/ASME B 18. 2. 2.
 - RISER PIPE SHALL BE WRAPPED WITH 1/8" THICK EPDM UNDER U-BOLTS AND SUPPORT CHANNEL.
 - CONTRACTOR SHALL PROVIDE A TIDEFLEX MIXING SYSTEM WITH A MINIMUM OF 3- 6" INLET NOZZLES. THE PLANS REFLECT A TYPICAL LAYOUT. CONTRACTOR WILL WORK COOPERATIVELY WITH RED VALVE TO PRODUCE A CUSTOMIZED MIXING SYSTEM ARRANGEMENT FOR THE LAMASCO TANK THAT INCLUDES THE NOZZLE QUANTITIES IDENTIFIED ABOVE.
 - SUPPORT BRACKETS FOR PIPING WILL BE MOUNTED IN CONFORMANCE WITH STANDARD PRACTICES FOR CONNECTIONS TO GLASS-LINED TANKS. CONTACT AUTHORIZED SERVICE REPRESENTATIVE OF QUASTORE TO GET DETAILS.
 - CLEAN DEBRIS OUT OF EXISTING BOWL AND DISPOSE.
 - INSPECT TANK FOR ANY MAJOR DEFECTS OR EVIDENCE OF CORROSION.

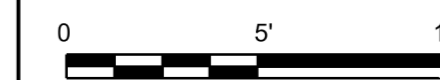


ISSUE	DATE	DESCRIPTION
3	5/22	RE-SUBMITTED FOR APPROVAL
2	3/15	RE-SUBMITTED FOR APPROVAL
1	12/12	SUBMITTED FOR APPROVAL

PROJECT MANAGER	M.HANSEN
DRAWN BY	L.LIGHTFOOT
CHECKED BY	B.TIPPEY
PROJECT NUMBER	10205112

**LYON COUNTY
WATER DISTRICT**
5464 US.62 W.
KUTTAWA, KY. 42055

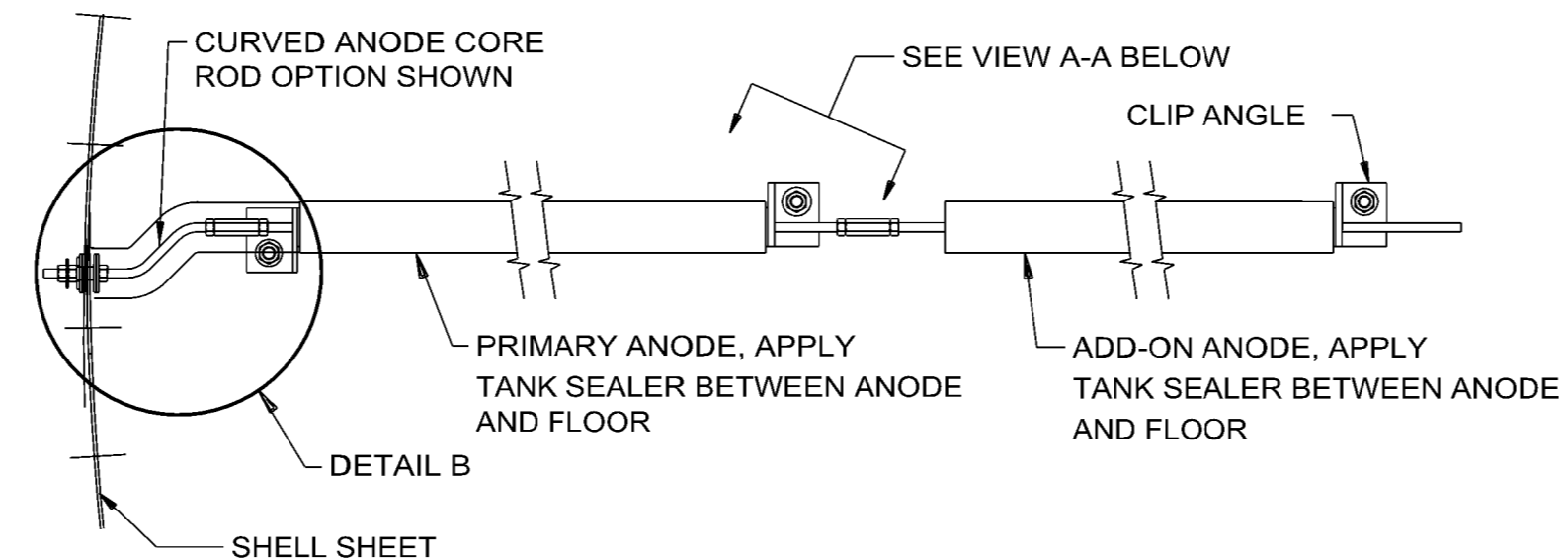
**LCWD WATER QUALITY &
SYSTEM IMPROVEMENTS
CONTRACT III - WATER TANK
IMPROVEMENTS**



**LAMASCO TANK
MIXING SYSTEM**

FILENAME | 00C-02 Mixing System
SCALE | 1"= 5'-0"

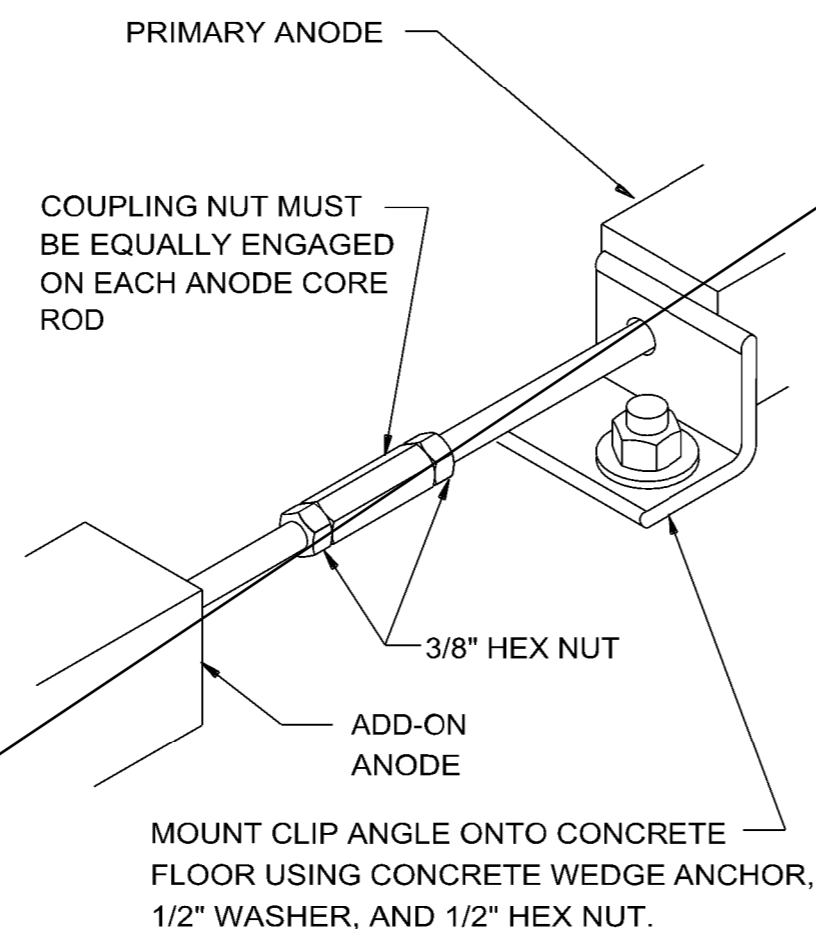
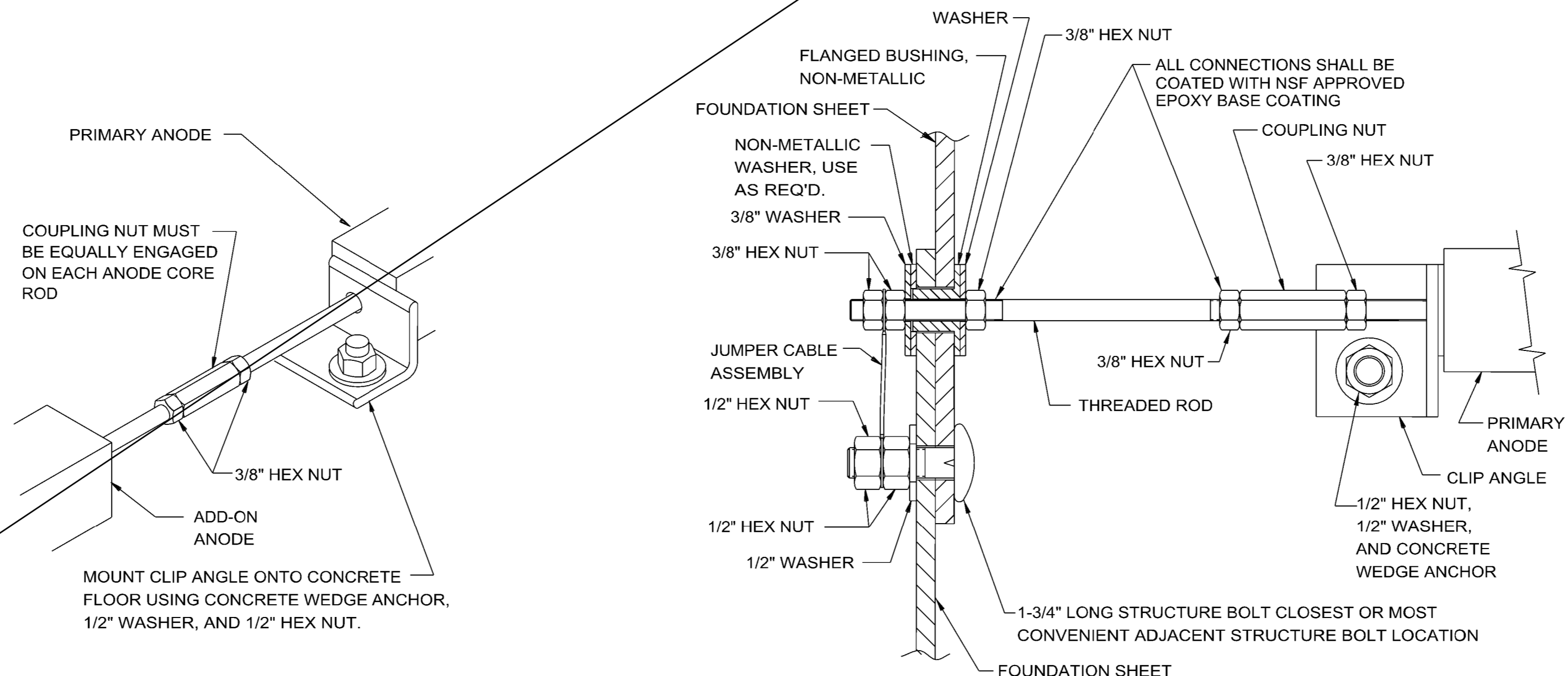
SHEET
00C-02



NOTES:
 1. THIS CONSTRUCTION DETAIL IS INTENDED TO SHOW THE CATHODIC PROTECTION SYSTEM AS INSTALLED. SEE P/N 266817 FOR DETAILED INSTALLATION INSTRUCTIONS.

Removed from Scope

**USAGE AQUASTORE CONCRETE FOUNDATION
 PLAN VIEW OF ANODE IN ASSEMBLED POSITION**



VIEW A-A

DETAIL B



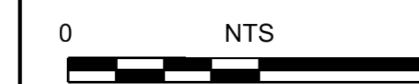
ISSUE	DATE	DESCRIPTION
3	5/22	RE-SUBMITTED FOR APPROVAL
2	3/15	RE-SUBMITTED FOR APPROVAL
1	12/12	SUBMITTED FOR APPROVAL

PROJECT MANAGER	M.HANSEN
DRAWN BY	L.LIGHTFOOT
CHECKED BY	B.TIPPEY
PROJECT NUMBER	10205112

**LYON COUNTY
 WATER DISTRICT**
 5464 US.62 W.
 KUTTAWA, KY. 42055

**LCWD WATER QUALITY &
 SYSTEM IMPROVEMENTS
 CONTRACT III - WATER TANK
 IMPROVEMENTS**

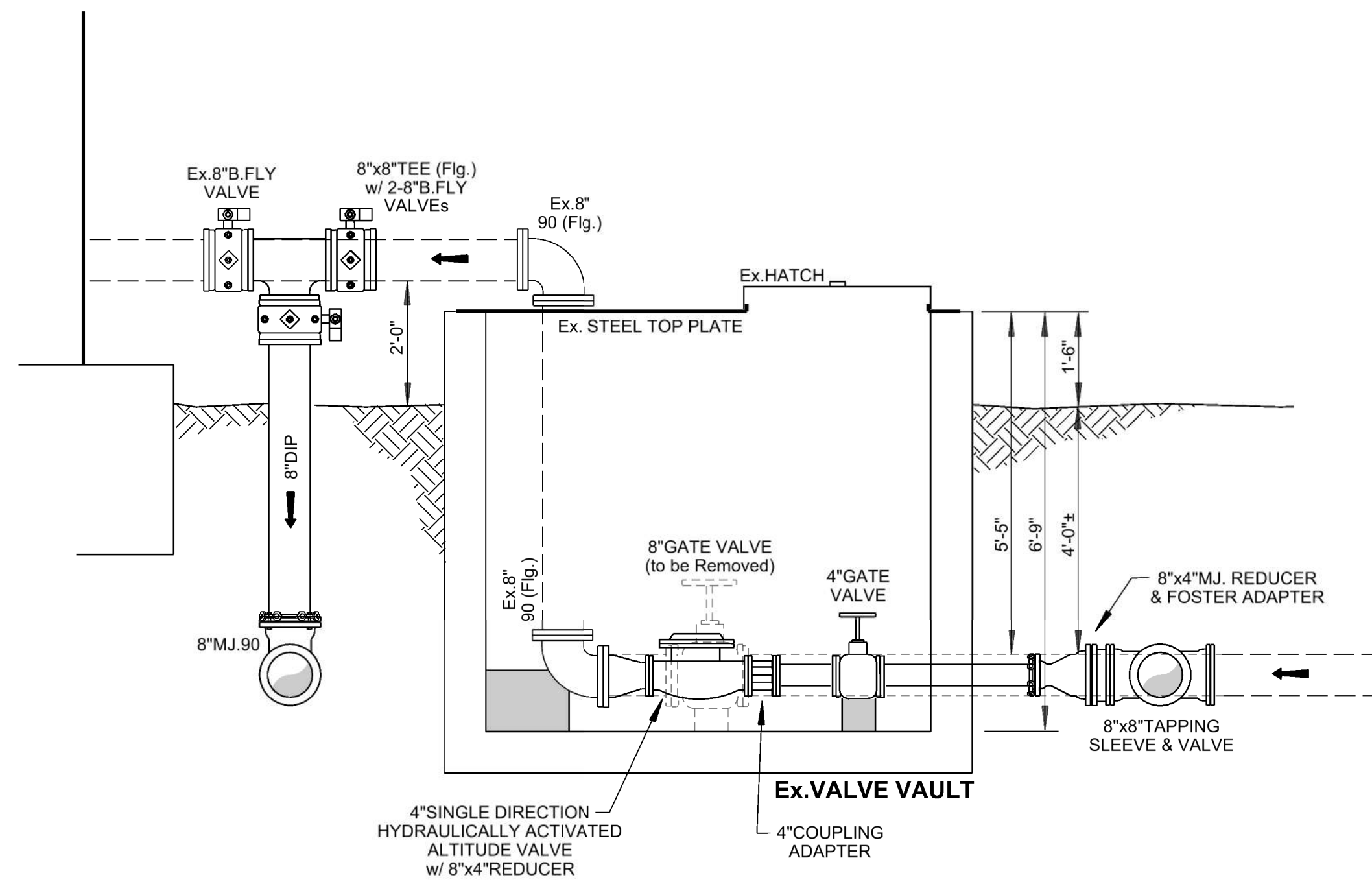
**LAMASCO TANK
 ANTI-CORROSION SYSTEM**



FILENAME | 00C-03 Anti Corrosion
 SCALE | NTS

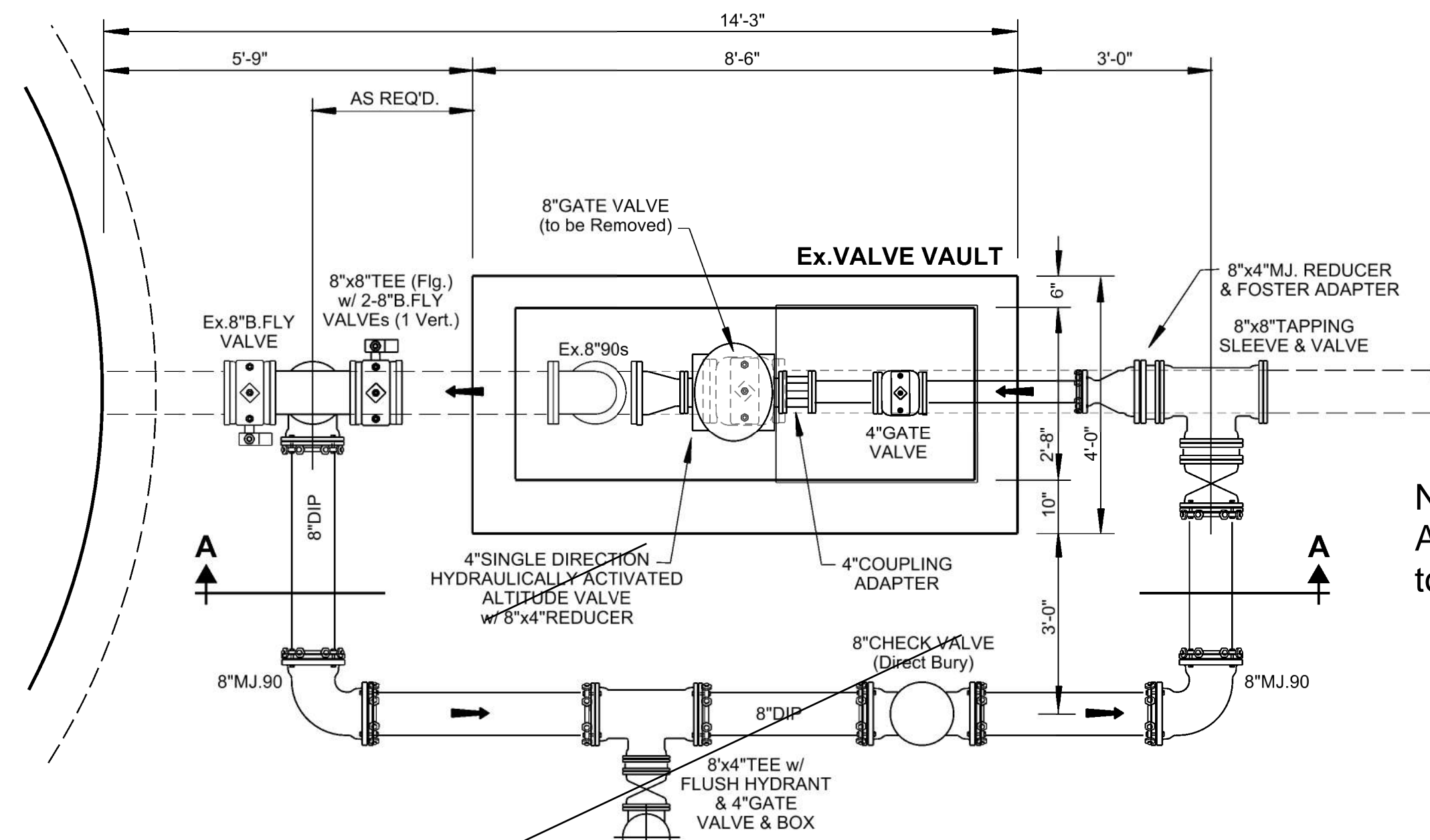
SHEET
00C-03

Ex. LAMASCO TANK



SECTION A-A

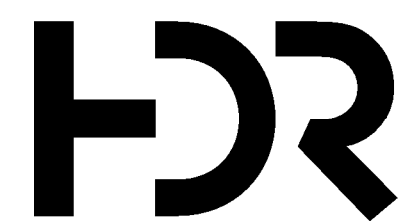
Ex. LAMASCO TANK



Note:
Altitude valve
to be 8"

Bypass Line
removed from Scope

PLAN VIEW



ISSUE	DATE	DESCRIPTION
3	5/22	RE-SUBMITTED FOR APPROVAL
2	3/15	RE-SUBMITTED FOR APPROVAL
1	12/12	SUBMITTED FOR APPROVAL

PROJECT MANAGER	M.HANSEN
DRAWN BY	L.LIGHTFOOT
CHECKED BY	B.TIPPEY
PROJECT NUMBER	10205112

**LYON COUNTY
WATER DISTRICT**
5464 US.62 W.
KUTTAWA, KY. 42055

**LCWD WATER QUALITY &
SYSTEM IMPROVEMENTS
CONTRACT III - WATER TANK
IMPROVEMENTS**

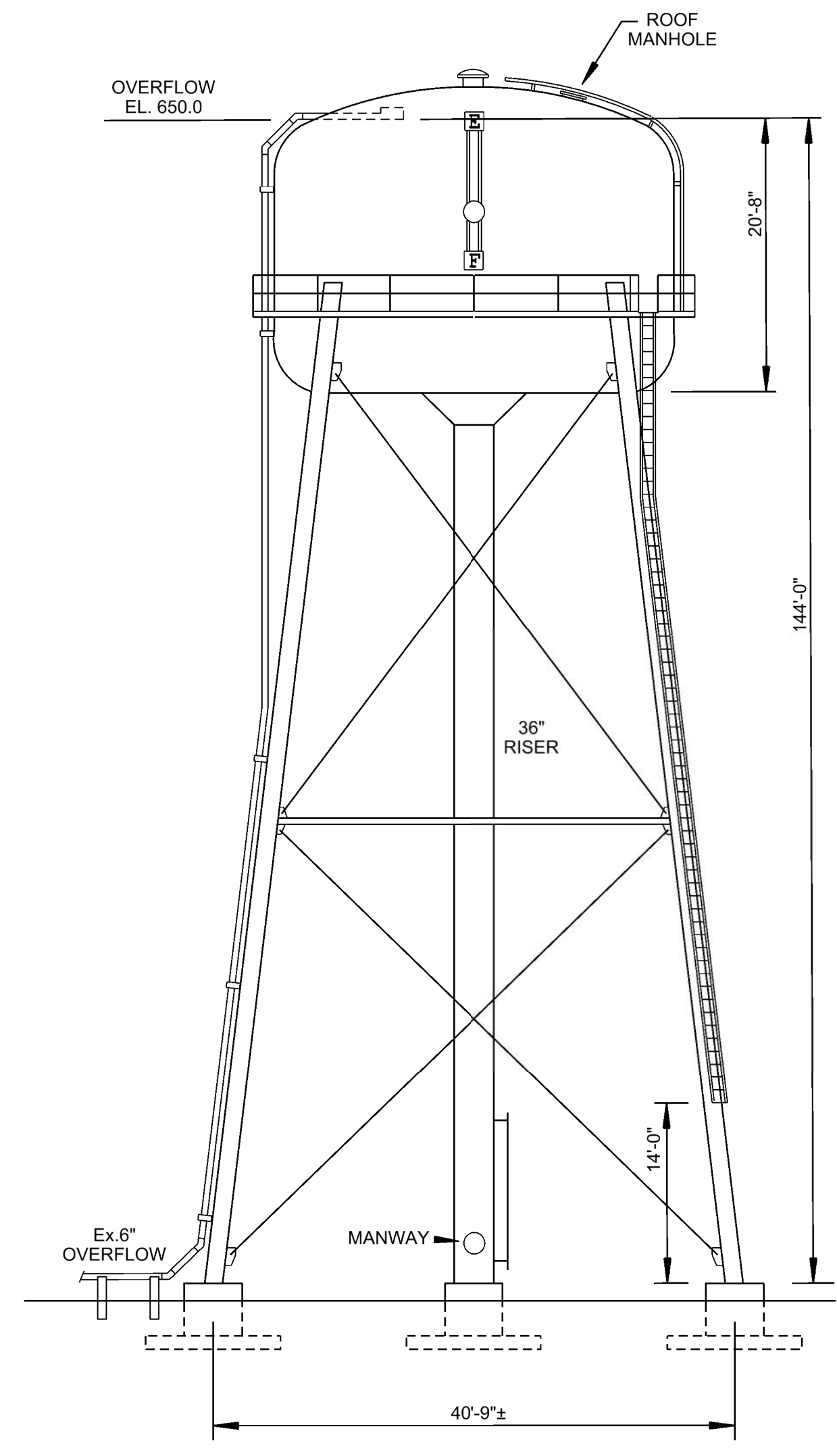
**LAMASCO TANK VALVE VAULT
BYPASS IMPROVEMENTS**



FILENAME | 00C-04 Valve Vault
SCALE | 1/2" = 1'-0"

SHEET
00C-04

Note:
New Signage for Jack
Thomason Tank added
to Scope

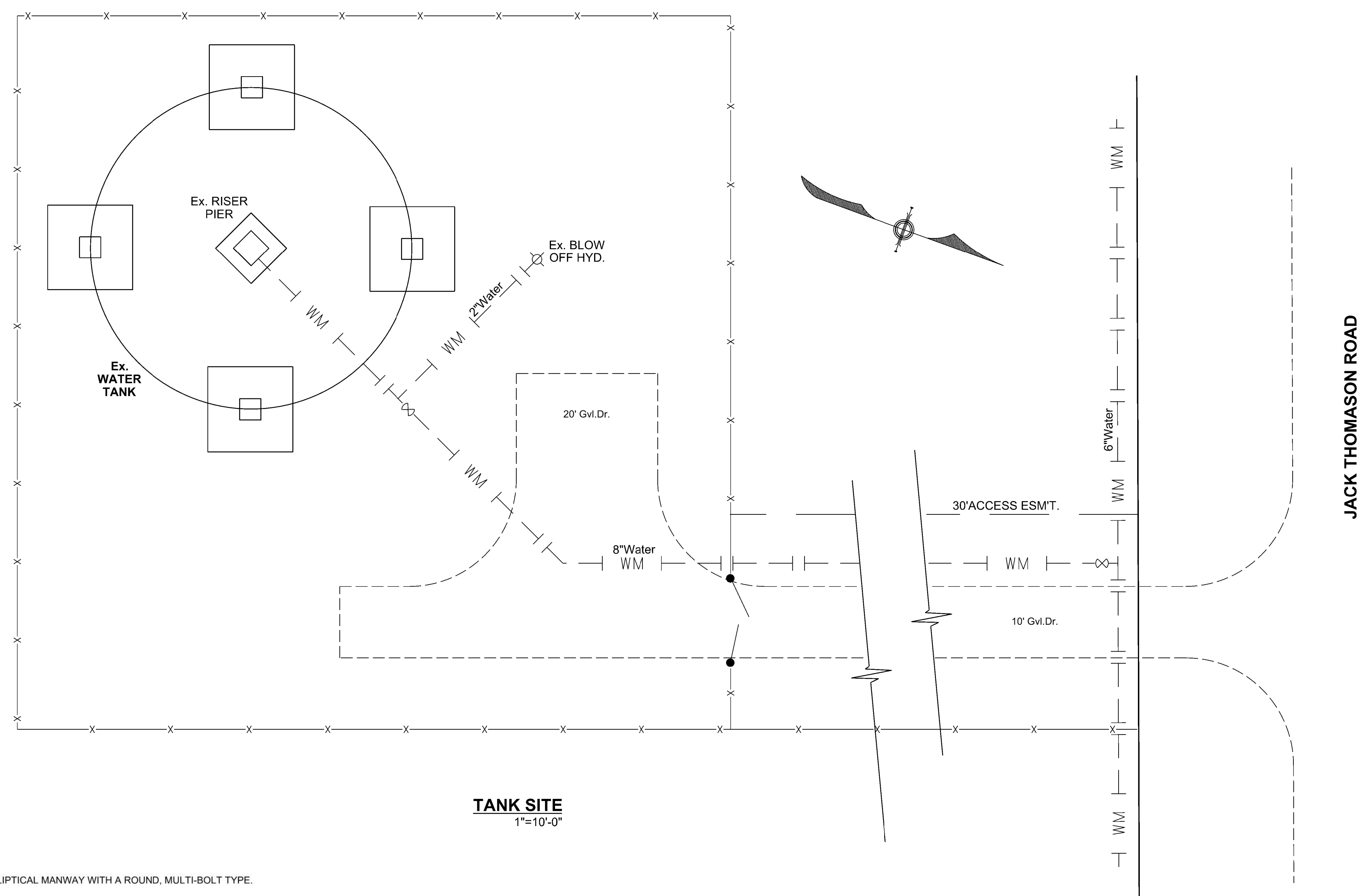


**JACK THOMASON
TANK ELEVATION**

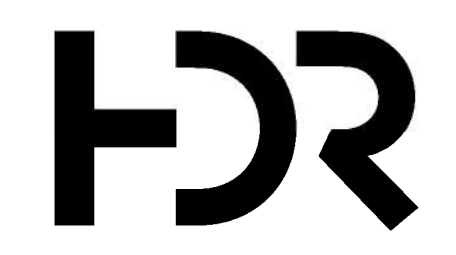
NOTE:
CAPACITY = 100,000 GAL.

NOTES:

1. CLEAN DEBRIS OUT OF EXISTING BOWL AND DISPOSE.
2. INSPECT TANK FOR ANY MAJOR DEFECTS OR EVIDENCE OF CORROSION BY UTILIZING AN INSPECTOR - SEE ALLOWANCE ITEM IN SECTION 09875 OF SPECIFICATIONS.
3. WATER JET ENTIRE EXTERIOR AND POWER TOOL AREAS OF HEAVY CORROSION - RECOAT AS DETAILED IN SECTION 09875.
4. COMMERCIAL BLAST CLEAN INTERIOR SURFACES AND RECOAT AS DETAILED IN SECTION 09875.
5. GROUT AROUND BASE OF TANK.
6. REPLACE ELLIPTICAL MANWAY WITH A ROUND, MULTI-BOLT TYPE.
7. REPAIR OR REPLACE THE LEVEL INDICATOR.
8. INCLUDE STIFFENER RING FOR THE JOINT BETWEEN THE RISER AND BOTTOM OF THE BOWL.
9. REPLACE ROOF SCREENS WITH FROST FREE TYPE.
10. REPLACE ALL SAFETY CLIMBS WITH CABLE TYPE.



TANK SITE
1"=10'-0"



ISSUE	DATE	DESCRIPTION
4	11/22	RE-SUBMITTED FOR APPROVAL
3	5/22	RE-SUBMITTED FOR APPROVAL
2	3/15	RE-SUBMITTED FOR APPROVAL
1	12/12	SUBMITTED FOR APPROVAL

PROJECT MANAGER	M.HANSEN
DRAWN BY	L.LIGHTFOOT
CHECKED BY	B.TIPPEY
PROJECT NUMBER	10205112

**LYON COUNTY
WATER DISTRICT**
5464 US.62 W.
KUTTAWA, KY. 42055

**LCWD WATER QUALITY &
SYSTEM IMPROVEMENTS
CONTRACT III - WATER TANK
IMPROVEMENTS**

Thomason
JACK THOMPSON TANK

0 10' 20' FILENAME 00C-05 Thompson SHEET
SCALE 1"= 10'-0" **00C-05**