

Water Valve Locations - Whitley County, KY - 2024

- Water Valves [838]
- exercised [548]
- not exercised [290]

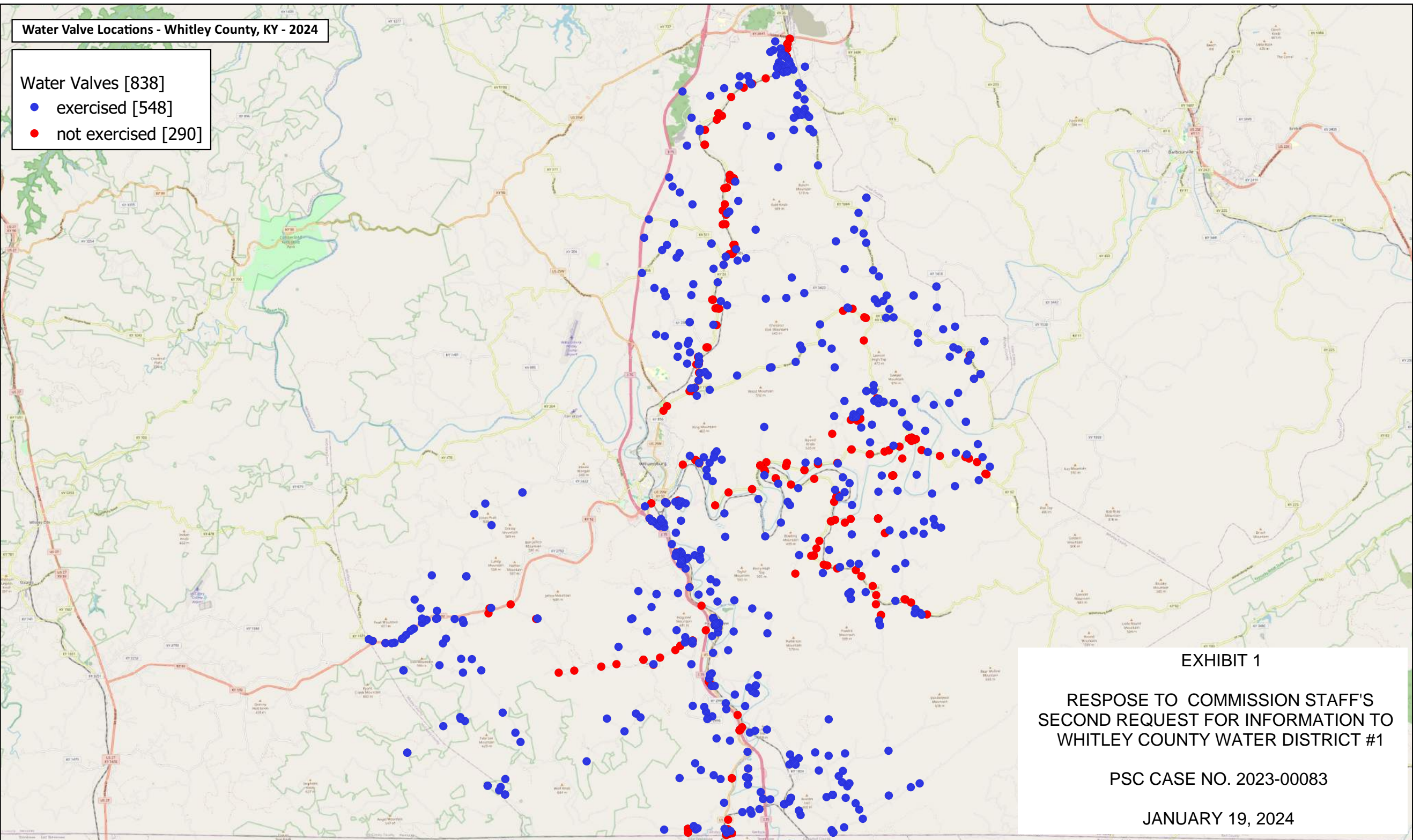


EXHIBIT 1
RESPONSE TO COMMISSION STAFF'S
SECOND REQUEST FOR INFORMATION TO
WHITLEY COUNTY WATER DISTRICT #1
PSC CASE NO. 2023-00083
JANUARY 19, 2024