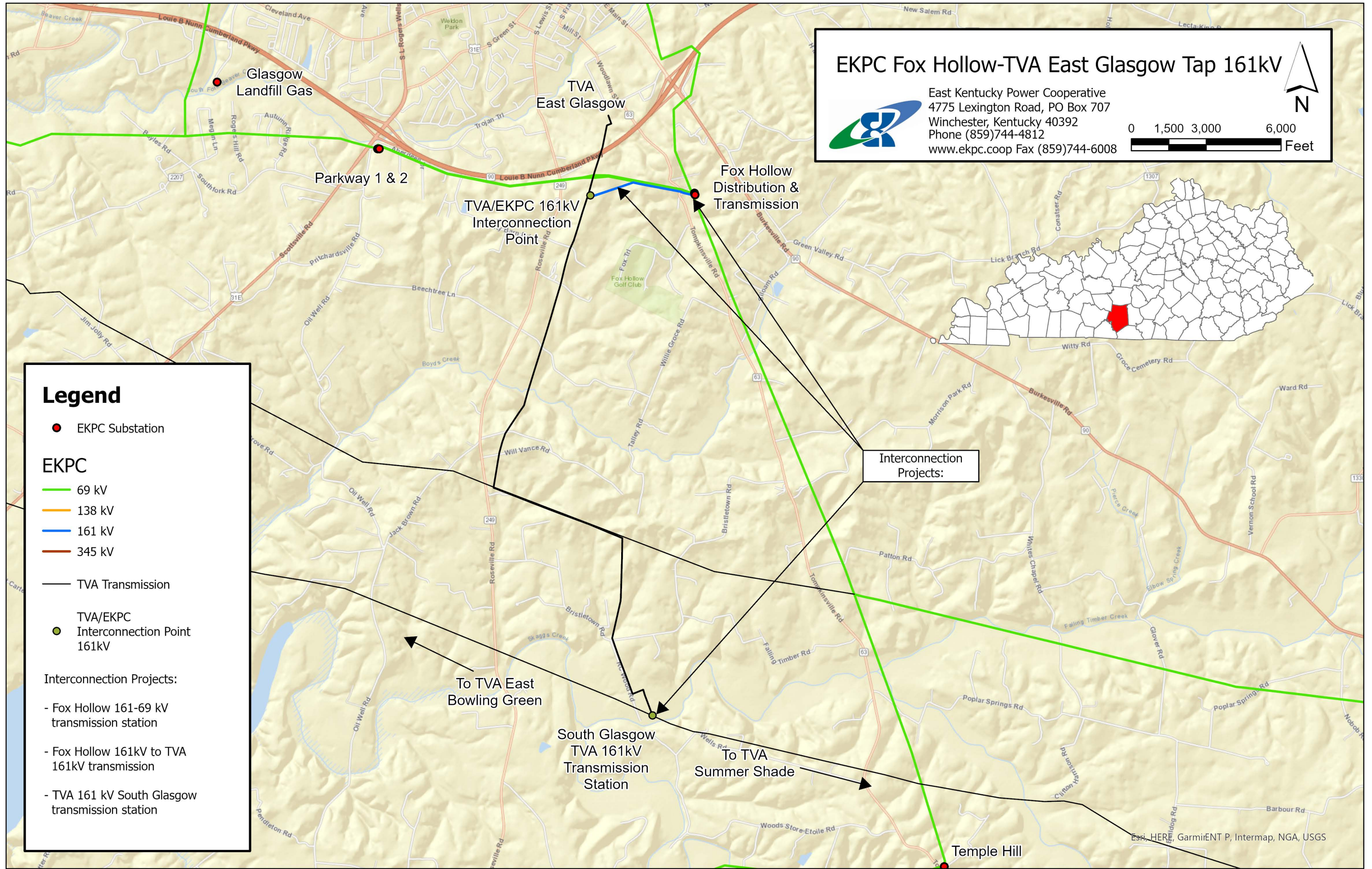
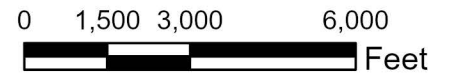


# EKPC Fox Hollow-TVA East Glasgow Tap 161kV



East Kentucky Power Cooperative  
 4775 Lexington Road, PO Box 707  
 Winchester, Kentucky 40392  
 Phone (859)744-4812  
 www.ekpc.coop Fax (859)744-6008



**Legend**

- EKPC Substation

**EKPC**

- 69 kV
- 138 kV
- 161 kV
- 345 kV

— TVA Transmission

TVA/EKPC

- Interconnection Point 161kV

**Interconnection Projects:**

- Fox Hollow 161-69 kV transmission station
- Fox Hollow 161kV to TVA 161kV transmission
- TVA 161 kV South Glasgow transmission station

Interconnection Projects:

To TVA East Bowling Green

South Glasgow TVA 161kV Transmission Station

To TVA Summer Shade

Temple Hill

Esri, HERE, Garmin, Intermap, NGA, USGS